

Volume 58

No. 8

April 2010

MISSISSIPPI GEOLOGICAL SOCIETY *eBulletin*



missgeo.com

MGS 2008-2009 BOARD OF DIRECTORS

Officers

President	Joe Johnson	Tellus Operating	(601) 898-7444
1st Vice President	Brian Sims	Tellus Operating	(601) 898-7444
2nd Vice President	Karl Kaufmann	Valioso	(601) 936-3601
Secretary	David Hancock	Roundtree & Assoc.	(601) 355-4530
Treasurer	Stanley King	Independent	(601) 842-3539
Webmaster	Steve Walkinshaw	Vision Exploration	(601) 607-3227
Advertising	John Cox	Independent	(601) 978-1763
Editor	Bob Schneeflock	Geodigital Consulting	(601) 853-0701

Boland Scholarship

President	Brian Sims	Tellus Operating	(601) 898-7444
Secretary	Dave Cate	Pruet Oil	(601) 948-5279
Members	Ray Lewand		
	Tony Stuart	Venture Oil & Gas	(601) 428-7725
	James Starnes	DEQ	
	Bob Schneeflock	Geodigital Consulting	(601) 853-0701

Honorary Membership

Chairman	Charles H. Williams, Jr.	Vaughey & Vaughey	(601) 982-1212
Members	Dudley J. Hughes	Hughes South Corp.	(601) 420-9892
	E. Ralph Hines	Moon-Hines	(601) 572-8300

MGS Representatives

AAPG	Rick L. Ericksen	Board of Reg. Prof. Geologists	(601) 354-6370
AAPG	Maurice Birdwell	Independent	(601) 936-6939
GCAGS	Danny Harrelson	U.S. Army Engineers R&D Center	(601) 634-2685

Other

Environmental Section	Ken Ruckstuhl	Environmental Mgt. Serv.	(601) 992-8233
Historian	Stanley King	Independent	(601) 842-3539

PRESIDENT'S LETTER

Joe Johnson

Fellow Members:

Earlier this month we gave 4 Mississippi students the Boland Scholarship at our luncheon. These students are the future of our industry, so as a society it is an accomplishment to be proud of.

Congratulations to Jim Furrh on his induction into Honorary membership status of the society.

This month Randy Bissell will be giving a presentation on accretionary wedge deposits preserved on a Caribbean island. My understanding is that the study area has been used by Exxon in the past for training offshore geologists.

Our annual Spring Fling at the Jackson Yacht club is just around the corner, so make preparations to attend. It will be a great gathering at the Reservoir as always.

AAPG will be this month in New Orleans. I hope to see some of you there. It should be a good convention, and it isn't too far from the house.

Hope to see you at the April luncheon.

Joe



In This Issue:

Meetings Schedule

**GeoTour Barbados:
Geologic Field Studies of
Deep-Water Reservoirs on a
Unique Caribbean Island**

**Honorary Membership
Presentation
of the Mississippi Geological
Society**

James B. Furrh, Jr.

**Dr. James B. Harris,
awarded the Carnegie
Foundation 2009 State
Professor of the Year.**

**2009 – 2010 BOLAND
SCHOLARSHIP
RECIPIENTS**

**MGS Membership
Application**

Members in good standing.

MGS Advertising Notice

**MGS Boland Scholarship
Fund**

MGS Honorary Members

MGS MEETING SCHEDULE

When	What/Who	Where
September 10, 2009	Fall BBQ	Jackson Yacht Club
October 8, 2009	Dan Buller—Petrophysical Evaluation of the Haynesville Shale in NE Texas and NW Louisiana	River Hills
November 12, 2009	Gregory J. Zerrahn —North Monroeville Field Monroe County, Alabama	River Hills
December 5, 2009	Christmas Party and Dance	Colonial Country Club
January 14, 2010	Rick Kear—Wireline Borehole Imaging & Interpretation Basics	River Hills
February, 2010	NO MEETING	
March 11, 2010	Jim Furrh Induction into MGS Honorary Membership and Boland Awards	River Hills
April 8, 2010	Randy Bissell -GeoTour Barbados: Geologic Field Studies of Deep-Water Reservoirs on a Unique Caribbean Island	River Hills
May 13, 2009	Spring Fling	Jackson Yacht Club

OFFICERS MEETINGS

August 11, 2009

September 1, 2009

October 6, 2009

November 3, 2009

December 1, 2009

January 5, 2010

February 2, 2010

March 2, 2010

April 6, 2010

May 4, 2010

"The budget should be balanced, the Treasury should be refilled, public debt should be reduced, the arrogance of officialdom should be tempered and controlled, and the assistance to foreign lands should be curtailed lest Rome become bankrupt. People must again learn to work, instead of living on public assistance."
 Cicero, 55 BC

GeoTour Barbados: Geologic Field Studies of Deep-Water Reservoirs on a Unique Caribbean Island

Randy Bissell, Geoscientist, Headington Oil Company LLC, Corpus Christi, Texas

SUMMARY

In 1994, a geologic field study of outcrops on the island of Barbados was conducted by an Exxon research team including this author. Deep-water sandstones were described to complement the company's worldwide exploration, production, and reservoir modeling portfolio. Easily accessible exposures of Eocene deep marine clastic sediments, oil production on the island, and the complex geologic origin of Barbados distinguish it from the nearby volcanic islands in the southern Caribbean Sea. This 166 sq. mi. island exists because of an emerging accretionary prism of flysch sediments, presumably shed from South America, now positioned in the Atlantic Ocean above the subduction zone of the convergent Atlantic and Caribbean oceanic plates. To the west, the Windward Islands of the eastern Caribbean Sea form an island arc corresponding to the trace of the subducted Atlantic plate. Within the Scotland District of Barbados, which is located along the central Atlantic coast, several spectacular turbidite outcrops provide windows into the reservoir-quality facies of submarine fans. Sandstone outcrops at Ragged Point, Chalky Mount, Windy Hill, and Green Hill represent contrasting transects through the submarine fan system. The ranges and juxtaposition of grain size, bedding thickness, and stacking pattern of Bouma-classified turbidites aid in assessing the relative position of each outcrop within a generalized fan model. Steeply dipping and overturned beds, thrust faulting, and shale diapirs confound the direct correlation of outcrops as a singular fan but attest to the composition and complexity of the accretionary prism. Pliocene and younger carbonate reef complexes have repeatedly and episodically formed atop the emerging Barbados prism creating broad limestone terraces and fresh-water aquifers vital to the island. Mud volcanoes and imbricated thrust nappes in the clastic prism support the oldest limestone terrace and form the highest (300+ m) elevations of the island. Extensive karst geomorphology, including networks of caves, sinkholes, and collapse gullies, are common to the uplifted limestone terrains. Oil exploration efforts in the waters around Barbados have brought the long-studied Scotland District turbidite outcrops more recent attention. A 2009 investigation was conducted by this author to the island in order to: revisit key Scotland District outcrops; reconsider earlier interpretations; assess the quality of the exposures for further study; and to photographically catalogue these outcrops and the other interesting geomorphologic features on the Island.

The author wishes to thank Dr. David K. Larue for guidance in the field in 1994 and his help pulling the published resources together for the 2009 trip. The author further wishes to acknowledge the life-long contributions of Dr. Robert C. Speed to the understanding of the history of the island through his research and publications.

Randy Bissell is a geoscientist with Headington Oil Company in Corpus Christi, Texas, assigned to explore and develop prospects within the Frio/Vicksburg Trend of South Texas since 1999. Previously, he was employed by Exxon in a 15-year career encompassing a variety of assignments including South Texas production, Gulf of Mexico deep-water research, and international exploration. His last assignment with Exxon was as the Lead-Professional Geoscientist for the Nigeria deep-water exploration team. While attending college, Randy worked as a field assistant for the U.S.G.S. and the Mississippi Geological Survey. He holds a B.S. from the University of Southern Mississippi (1982) and M.S. from Oklahoma State University (1984). Randy has authored and co-authored numerous publications, field studies, seminar lectures, and his master's thesis on topics related to the prediction of hydrocarbon reservoir distribution from the application of geologic models developed through the combined analysis of outcrop, cores, well logs, and seismic facies/attribute expressions.



Randy Bissell joyfully embraces the thick Ta portion of a well-exposed Bouma Ta, Tb, & Tc turbidite bed along the Atlantic coast of Barbados. The Eocene turbidites of the Scotland District were deposited in submarine fan systems. Deepwater sediments were subsequently uplifted within an accretionary prism that has breached the surface of the Atlantic Ocean and formed the geologic, geographic, and economic foundation of the unique island nation of Barbados.

**Honorary Membership Presentation
of the Mississippi Geological Society
James B. Furrh, Jr.
March 11, 2010**

Mister President, Members and Guests of the Mississippi Geological Society:

From time to time, the Honorary Membership Committee of the Mississippi Geological Society, comprised of Chairman Charles H. Williams, Jr. and Co-Committeemen Dudley J. Hughes and E. Ralph Hines, recommends that a member of the Society be named as an Honorary Member.

Requirements for this prestigious recognition are that the nominee throughout his/her term of membership in the MGS be a member-in-good-standing and further, that he/she through their scientific activity as a whole have brought favorable recognition to the Mississippi Geological Society.

It is hereby my distinct privilege as chairman of the MGS Honorary Membership Committee to present the credentials duly made and unanimously accepted by the Board of Directors that James B. Furrh, Jr. be named Honorary Member of the Mississippi Geological Society. The accompanying report includes pertinent information about Jim and provides the basis for his appointment.



Jim Furrh responding to being named Honorary Member of the MGS

James B. Furrh
Honorary Membership Presentation
of the Mississippi Geological Society
March 11, 2010

James Brooke Furrh, Jr., was born in Marshall, Texas, on April 13, 1926. He attended school in Elysian Fields, Texas, and graduated from Kemper Military School in Boonville, Missouri. Being born and bred in the middle of the great east Texas oil fields, he was naturally attracted to the science of geology. He attended The University of Texas where his goal was to obtain a degree in geology. He graduated in 1950 with a BA and a BS degree in geology.

Jim served as a 1st Lieutenant in the U.S. Air Force from 1951 to 1953 and was stationed first at Lackland Air Force Base in San Antonio, then was transferred to Warner Robbins Air Force Base in Georgia, then Kelly Air Force Base in San Antonio, then to Elmendorf Air Force Base in Anchorage, Alaska. (As an aside, Jim was sent to Alaska as punishment for not marrying the daughter of the Kelly Air Force Base commander – this is true.) In 1954, he joined Ohio Oil Company (now Marathon) as a petroleum geologist and was sent to Jackson, Mississippi, where he worked for six years. In 1960, Jim decided to look for oil and gas as an independent and has been highly successful prospecting and drilling wells in Mississippi, Louisiana, Texas, Alabama, Arkansas and Florida. Some of the fields he has discovered or played a key role in developing are: Dinan, Second Creek, Silver Creek, Apple Grove, Ellis Cliffs, Magnolia, Garden City, Graf-ton, Spokane, West Lincoln, Knoxo, Pool Creek, Diamond Field, Little Creek and State Line in Arkansas. Jim even managed to drill his way in the fabulous Jay Field in Florida. He is currently drilling wells in Carthage Field in east Texas and in the Haynesville trend. The barrel equivalent of oil and gas found and produced by these fields numbers in the many millions.

He is the co-owner of Energy Drilling Company in Natchez, Mississippi, and co-manager of the Furrh Family mineral interests in Texas.

Jim has been a member in good-standing of the Mississippi Geological Society for fifty-five years serving on various committees during this time. In addition to the Mississippi Geological Society, he is a long-standing member of the American Association of Petroleum Geologists, Society of Independent Professional Earth Scientists, Gulf Coast Association of Geological Societies and the Texas Land and Mineral Owners Association.

Jim has been a distinguished leader in political affairs of the oil and gas industry. On two occasions, he served as a very effective Chairman of the Mid Continent Oil and Gas Association, now the US Oil & Gas Association. He continues to serve as member of the Executive Committee and the Board of Directors of both the Mississippi/Alabama Division and the National Board in Washington, D.C. He is also a member of the Independent Petroleum Association of America and has served as Vice President and member of the Board of Directors.

In addition to his business and industry activities, Jim has made time to be active in building a two-party system in Mississippi. He has been one of the warriors for the Republican Party for 50 years. He served as the State Finance Chairman of the Mississippi Republican Party from 1985 to 1989. He served as a delegate to three Republican National Conventions and was a Mississippi presidential elector in 1980 and 1984. President George H. W. Bush appointed him Chairman of the Sabine River Compact Administration serving from 1989 – 1991 and Chairman of the Southern States Energy Board from 1991 – 1993.

Jim is a member of Covenant Presbyterian Church of Jackson where he has served as a deacon. He has served on the Board of Directors of the Capital City Petroleum Club, River Hills Club and the Jackson Chamber of Commerce. He is a member of the Country Club of Jackson.

Jim and his wife of 55 years, Mary Leigh, have three sons and seven grandchildren.

It is my district privilege to present James B. Furrh, Jr. as Honorary Member of the Mississippi Geological Society.

Charles H. Williams, Chairman, Honorary Membership

Our own Dr. James B. Harris, Professor of Geology, Millsaps College was awarded the Carnegie Foundation 2009 State Professor of the Year Award for Mississippi.

The U.S. Professors of the Year program salutes the most outstanding undergraduate instructors in the country—those who excel in teaching and positively influence the lives and careers of students. Sponsored by CASE and The Carnegie Foundation for the Advancement of Teaching, it is the only national program to recognize excellence in undergraduate teaching and mentoring.

The professors recognized were identified through a rigorous selection process that included three rounds of judging by CASE and the Carnegie Foundation.

Congratulations to Dr. Harris.



Dave Cate, Master of Ceremonies

2009 – 2010 BOLAND SCHOLARSHIP RECIPIENTS

The Mississippi Geological Society awarded its annual L. F. Boland Scholarship to four students at the March 11 meeting.

This foursome makes a total of 108 students to be honored by the Society for outstanding achievements in the geoscience field since the awards began in 1982-1983.

The students were each awarded \$1,000 and a framed certificate denoting their achievement.



Darrel Schmitz

Frank Heitmuller

Zach Musselman

Faith Amadi

↑
Maria Cade

↑
Jin Watkins

↑
Andrew Fleming

↑
Melanie Graupner

Andrew Fleming – Millsaps College. Andrew is from Oceans Springs, Mississippi and a Senior at Millsaps with a 3.84 GPA in his geology major. After graduation, he plans to pursue a M. S. degree in geology with an interest in studying sedimentary environments and coastal processes. His honors include Most Outstanding Student in Geology at Millsaps, the National Geologic Honor Society and the Millsaps College Honors Program. He is working on an honors project correlating the stratigraphy and geophysical techniques of an alluvial fan in Panola County, Mississippi. He currently interns at MDEQ, is a member of the Millsaps varsity baseball team, and is active in the Millsaps Geology Club and the Fellowship of Christian Athletes.



Andrew Fleming

Zach Musselman

Melanie Graupner – University of Mississippi. Melanie is from Waldkraiburg, Germany and is a Senior at the University of Mississippi with a 3.90 GPA in her geology major. Maria plans to pursue a M. S. degree with an interest in either energy or tectonics. Maria is married and her husband has accepted a position with a large accounting firm in Minnesota so her choice of graduate schools will be in that area. She has numerous awards and honors including the inaugural Bob Woolsey Memorial Scholarship, at Ole Miss, Chancellor's and Dean's List and Shreveport Geological Society Scholarship. She is a teaching assistant in the Geology Department and is the current President of the UM Geology Club. Previously, she had obtained a pharmacy degree in her home country.



Melanie Graupner

Faith Amadi

Maria Cade – Mississippi State University. Maria is from Columbus, Mississippi and is a Junior at Mississippi State University with a geology GPA of 3.70. She is a double major in Geology and Education with the ultimate career goal of becoming a teaching professor. She is a member of Gamma Beta Phi, Alpha Lambda Delta and the National Society of Collegiate Scholars. She currently works in the Dunn-Seiler Museum at Mississippi State and also assists as an assistant in geology lab work. She also participates in the Mississippi State Famous Maroon Band Colorguard.



Darrel Schmitz

Maria Cade

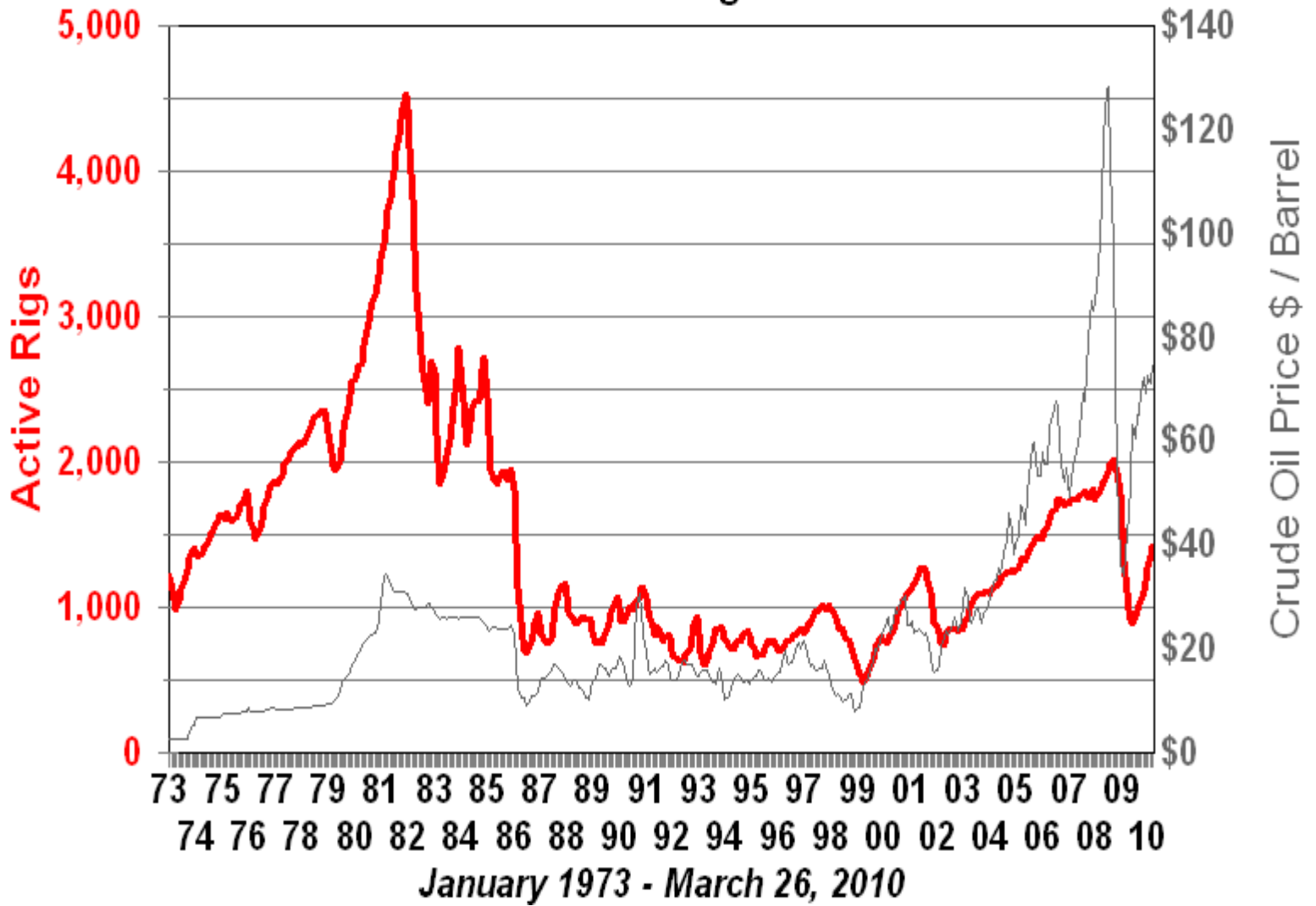
Jin Watkins – University of Southern Mississippi. Jin is from Philadelphia, Mississippi and grew up in the Hattiesburg area. She is a Senior with a 3.30 GPA in her geology major. She plans to pursue a M. S. degree with a career goal in either energy or the environmental field. Prior to USM, she attended Jones Co. Jr. College where she received the Academic Excellence award. She received the 2008 Tellus Endowment and the 2008 Mellan Scholarship at USM plus being on the Dean’s List. She has published a paper entitled “Geomorphic Assessment of Pearce Creek, Camp Shelby Training Site’ for the 2008 GSA Annual Meeting. She is a geology tutor for the athletic department and a Wetlands Field Asst. for the Camp Shelby Training Site. She is also the President of the Southern Geological Society and a student member of the GSA and AAPG.



Jin Watkins

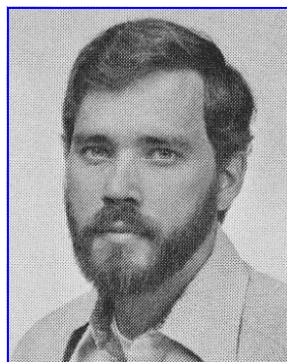
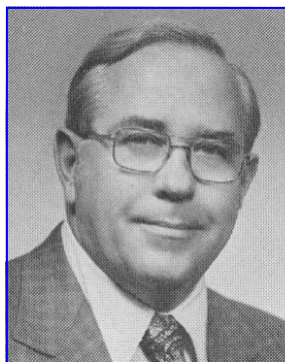
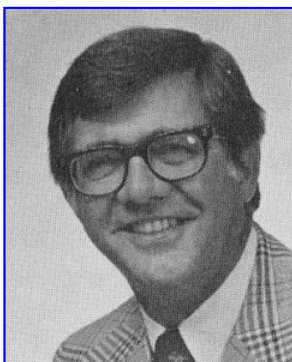
Frank Heitmuller

U. S. Rotary Rig Count Active Rigs



Who are these MGS members?

Hint: 1978



Answers on last page

MGS BOLAND SCHOLARSHIP FUND

The Society's L. F. Boland Scholarship Fund is open to donations (tax deductible) year round. Your contribution will help the Society recognize and reward outstanding earth science students at its annual Honors Day meeting on March 11, 2010.

Since inception in 1980, the Society has honored 104 students with the Boland Award. If you would like to contribute, please contact Dave Cate at 601-718-9397 or mail your check (L. F. Boland Scholarship Fund) to him at 217 W. Capitol St., Jackson, MS 39201.

The MGS gratefully acknowledges the following contributors to the L. F. Boland Scholarship Fund for the 2009-2010 year.

The Boland Family

Joe
Bill
Pat
Liz
Butch
Mike
Mary

Maurice Birdwell
Dave Cate
Chris Franks
Jim Furrh
Paul Gribas
Meade Hufford
James D Libiez

Maurice Meylan
George Puckett
Jim Michael
Julius Ridgway
Bob Schneeflock
Tony Stuart

Randy Bissell in Memory of William H. (Bill) Moore

MGS Honorary Members

Esther Applin*

Paul Applin*

Lawrence F. Boland*

Verne Culbertson

H. Leroy Francis*

Jim Furrh

David C. Harrell*

Oleta R. Harrell*

Ralph Hines

Dudley J. Hughes

Urban B. Hughes*

Wendell B. Johnson *

Walter P. Jones*

Harold Karges*

Wilbur H. Knight*

Winnie McGlammery*

Thomas McGlothin*

Frederic F. Mellen*

Maurice E. Miesse*

Emil Monsour*

William H. Moore*

Marvin E. Norman*

Marvin L. Oxley*

Richard R. Priddy*

Thurston Connell Rader*

Baxter Smith*

Harry V. Spooner

Henry Toler*

H. Vaughn Watkins

Stewart W. Welch

Charles H. Williams

Jerry Zoble

*** deceased**

MEMBERSHIP APPLICATION / RENEWAL FORM

MISSISSIPPI GEOLOGICAL SOCIETY

P.O. BOX 422, JACKSON, MISSISSIPPI 39205-0422

2009-2010

Membership year is June through May

New Membership (\$20/yr)_____ Renewal (\$20/yr)_____ Student (\$5/yr)_____ Associate (\$20/yr)_____

Boland Scholarship Fund Donation \$_____ Total Amount Enclosed \$_____

Last Name:_____ First:_____ MI:_____

Mailing Address:_____

Office Phone:_____ Home Phone:_____ FAX:_____

E-mail Address: _____

College/University Attended: _____

Degree(s) Obtained and Year(s) Awarded: _____

Professional Associations, Certifications, & Licenses: _____

The following are MGS members in good standing (page 1)

Ken Adams	Jim Furrh	Joe Johnson (O)
Ed Andress	Stan Galicki	Lars Johnson
Les Aultman	Robert Gaston	Karl Kaufmann (O)
Bill Bagnall	Donald Gifford	Stanley King (O)
Larry Baria	Thomas Giosa	Cragin Knox
Neil Barnes	Carl Gray	Jake Lacy
Michael Bilberry	Bobby Greenwood	James R. Landrem
Maurice Birdwell	Paul Gribas	Dee Layman
Randy Bissell	Phillip Gunter	Cody Lenert
Mike Blackwell	Wayne Haley	James D. Libiez
Michael Bograd	David Hancock (O)	Mike Liebert
Chris Bowen	George Haymans	Tim Lyons
Joe Bradley	Franklin Heitmuller	Ken Magee
Robert Branson	Dan Herlihy	John McCallum
Alvin W. Byrd	Bob Herr IV	Joe McDuff
Pittman Calhoun	Ezat Heydari	Thomas E. McMillan
Dave Cate	David Higginbotham	Jonathan McMillin
Matt Caton	David Hilton	Maurice A Meylan
Glen C. Clark	Ralph Hines (H)	Jim Michael
Reino Clark	Todd Hines	Bryant Miller
Graham Cook	Johnny Holifield	Dean Miller
Phil Cook	Bernard Holman	Jack Moody
John Cox (O)	Meade Hufford	Pat Moore
Verne Culbertson (H)	Dudley Hughes (H)	Charile Morrison
Jim Cummings	Timothy W. Hurst	James Mulligan III
David Dockery	Lisa Ivshin	Lew Murray
Charlie Doubek	E.G. Jeffreys	Jim Nix
Tommy Dunlap	W. Kevin Jeffreys	James Norris
Chris Fancher	Ron Jinkins	Conner Perkins
Jim Files	James C. Johnson	Frank Perkins

The following are MGS members in good standing (page 2)

Thang Pham	James Starnes	
Jeanne S.F. Phelps	Jim Stephens	
Shawn Stewart Pool	Lindsey Stewart	
William Potthoff	Edwin Sticker	
Billy Powell	Tony Stuart	
George Puckett	John Sullivan	
James H. Rawls	Andy Sylte	
Phillip Reeves	Mike Taylor	
Armando Ricci	Stan Thieling	
Bill Ridgway	Bob Thomas	
John G. Ridgway	David E. Thompson	
Julius Ridgway	Wayne Upchurch	(H) - Honorary
Ken Ruckstuhl	Janet Verret	(O) - officer
Howard Samsel	George Vockroth	
Darrel Schmitz	Steve Walker	
Robert Schneeflock (O)	Steve Walkinshaw (O)	
Wallace Scoggins	Eddie Waller	
Mark Scott	Fred Walsh	
Thomas B. Seitz	Johhnie Wanger	
George Self	Vaughn Waatkins, Jr. (H)	
Bren Sidereas	Stewart W. Welch (H)	
John Silvernail	Rob Weyman	
Brian Sims (O)	Joe R. White	
Shane Sklar	Charles Williams (H)	
Charlie Smith	Lance Wilson	
Don Smith	Bradley Winton	
George T. Smith	Bob Womack	
Jimmy Sparks	Mark Wyatt	
Harry Spooner (H)	Steven Richard Yancey	
Michal Spooner	Asim Yousafzai	
	Jerry Zoble (H)	

MGS ADVERTISING ORDER FORM

September 2009 – May 2010

I. Bulletin Advertisements:

<u>Size</u>	<u>Rate/Year</u>	<u>Amt. Remitted</u>
Full Page Ad (6" x 8")	\$500	\$ _____
1/2 Page Ad (6" x 4")	\$300	\$ _____
1/4 Page Ad (3" x 4")	\$200	\$ _____
Business Card Ad (1 1/2" x 3")	\$100	\$ _____
Professional Listing (1/2" x 3")	\$ 50	\$ _____

II. Web Page Advertisements (www.missgeo.com):

<u>Type of Web Page Ad</u>	<u>Rate/Year</u>	<u>Amt. Remitted</u>
Front Page Sponsor (Banner Ad – limit of 5)	\$500	\$ _____
Second Page Banner Ad	\$250	\$ _____
Professional Listing/Link	\$100	\$ _____

(Note: Please contact Steve Walkinshaw at (601) 607-3227 or mail@visionexploration.com for details concerning placing your ad on the MGS web site.)

Total Remitted \$ _____

Please make checks payable to the Mississippi Geological Society. If you have any questions, contact John Cox at (601) 978-1763 or john_cox@bellsouth.net

SEI®

SEISMIC EXCHANGE, INC.

201 St. Charles Ave., Suite 4300
New Orleans, LA 70170-4300
(504) 581-7153 • Fax (504) 581-9591

HOWARD PATTON

PRUET OIL COMPANY, LLC

OIL & GAS EXPLORATION

217 WEST CAPITOL STREET
JACKSON, MS 39201

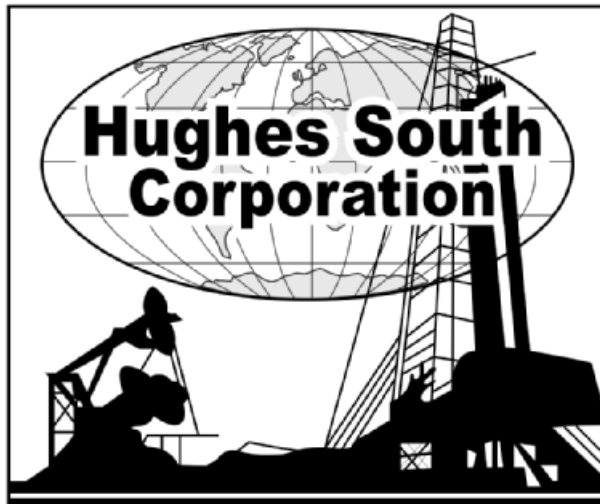
OFFICE: (601) 948-5279 FAX: (601) 944-1281

W. LESTER AULTMAN

125 South Congress St., Suite 1212, Jackson, MS 39201
Office (601) 353-2738 Res. (601) 924-4830

VANTAGE OIL COMPANY

7170 Tank Road (601) 878-0593
Terry, MS 39170



Mirror Lake Office Plaza
2829 Lakeland Drive, Suite 1670
Flowood, Mississippi 39232
Phone: (601) 420-9892
Fax: (601) 420-9893



OPERATING GROUP, LLC

602 Crescent Place, Suite 100
Ridgeland, MS 39157

601-898-7444 Voice

601-898-7446 Fax

BRIAN SIMS

EXPLOITATION GEOLOGIC MANAGER

Email: bsims@tellusoperating.com

OWLCO

Oil Well Logging Company

P. O. Box 1692
Madison, MS 39130

(601) 477-8315



MOCO INC.
The Mississippi Oil Company

MICHAEL L. BLACKWELL
H. DON NOBLITT

603 Northpark Drive • Ridgeland, MS 39157
(601) 957-3550



Karl J. Kaufmann
President

Suite B
546 Keyway Drive
Jackson, MS 39232

601-936-3601
Fax 601-936-3646
coukauf@aol.com

BLAIR & BONDURANT, P.A.
ATTORNEYS AT LAW

WILLIAM F. BLAIR

P.O. Box 321423 1368 Old Fannin Road
Jackson, MS 39232 Suite 300
Telephone: (601) 992-4477 Brandon, MS 39047
Telecopier: (601) 992-9189 Email:



**TROPHY
PETROLEUM
CORPORATION**

100 N. Van Buren Street
Post Office Box 415
Carthage, MS 39051
(601) 298-0200 (601) 298-0201 Fax

E. Wayne Upchurch
President

**ARK-LA-TEX
LOG LIBRARY, INC.**

400 TRAVIS - SUITE 500
SHREVEPORT, LOUISIANA 71101-3113

Marie Pace
MANAGER

PHONE (318) 227-1641
FAX (318) 227-1642

BRUXOIL, INC.

DAVID K. BROOKS - PRESIDENT
RAYMOND A. HELFRICH - VICE PRESIDENT
DOROTHY M. JAUBERT

P. O. Box 16929
Jackson, MS 39236
(601) 981-5722
FAX: (601) 366-9490



COX John G. Cox
Petroleum Geologist

John G. Cox
Geologist

603 Northpark Drive, Suite 300
Ridgeland, Mississippi 39157

601.978.1763
fax 601.952.0425
john_cox@bellsouth.net

MOON & HINES
OIL & GAS EXPLORATION

MOON-HINES-TIGRETT OPERATING CO., INC.
PROPERTY MANAGEMENT

P O BOX 3216
RIDGELAND, MS 39158

OFFICE (601) 572-8300 FAX (601) 572-8310



ROUNDTREE & ASSOCIATES, INC.
OIL AND GAS PRODUCTION
210 Trace Colony Park Drive,
Ridgeland, MS 39157
Phone (601) 355-4530

Boone  **Exploration, Inc.**

Lynn D. Boone
President

J.C. Carlisle
Vice President

21 Wire Road
P.O. Box 8660
Huntsville, TX 77340

Phone: 936-295-4066
Fax: 936-295-4042
Email: jcc9551@aol.com



KELTON OPERATING COMPANY, INC.
since 1953

605 SUN TRUST TOWER
220 W. GARDEN STREET
PENSACOLA, FL 32501
P.O. BOX 230
PENSACOLA, FL 32591

TELEPHONE
(850) 434-6830
FACSIMILE
(850) 434-6842

I. Meade Hufford, CPL
Owner-President

Energy Land Services

Oil & Gas Exploration

99 N. Post Oak Lane
Suite 6101
Houston, TX 77024
Phone: 713-888-0012
Cell: 713-705-7235
E-mail: hufford1913@aol.com
VA Phone: 804-438-5852

JULIUS M. RIDGWAY

COASTAL EXPLORATION, INC.

1437 OLD SQUARE ROAD, #104
JACKSON, MISSISSIPPI 39211

601-362-0502
FAX: 601-362-5397

SPOONER PETROLEUM COMPANY

210 East Capitol St., Suite 956
Jackson, Mississippi 39201

**Oil & Gas Production & Exploration
Contract Operations**

601-969-1831

JAMES B. FURRH, Jr., Inc.

Oil & Gas Exploration

4450 Old Canton Road, Suite 205,
Jackson, MS 39211
Phone (601) 982-9393 Fax (601) 982-9785

E. GEOFFREY JEFFREYS

Petroleum Consultant

OIL, GAS AND MINERAL APPRAISALS

115 Fairway Drive
Daphne, AL 36526
egjeffreys@aol.com

Off (251) 621-1850
Fx (251) 621-1630
Cell (251) 709-7919

Bryant Miller
1837 Peachtree Street
Jackson, MS 39202
bryantgmiller@bryantgmiller.com

ENERGEN
RESOURCES

President
James McManus

Executive Vice President & COO
John Richardson

Vice President
Operations
Paul Sparks

General Manager
Acquisitions & Engineering
Gene Cash

General Manager
Geology
Ron Tisdale

General Manager
Land
Paul Rote

(205) 326-8429

Joseph H. McDuff
Geologist

351 Chapel Loop
Mandeville, LA 70471
985.845.9430
jmcduff@bellsouth.net



**Diversified Land
Management, Inc.**

**PERMIT ACQUISITION
SPECIALISTS**

Jack Tate
President

P.O. Box 363
Ridgeland, MS 39158

505 Loire
Suite H
Lafayette, LA 70507

Office: 337.886.0060
Fax: 337.886.0064
Cell: 601.259.1366
email: geoagent46@aol.com
dmlnconline.com

"A company committed to excellence and achieving success while providing professional permitting acq. & project mngt. with the client's interests & concerns top priority"

SYNERGY ENERGY



Weatherford
LABORATORIES

At Weatherford Laboratories, we provide a single source for comprehensive laboratory analyses, creating a synergy previously unknown in laboratory services. This single source supplies the broadest portfolio of services for acquiring and interpreting data from physical samples worldwide. The end result is more precise development planning and reduced reservoir uncertainty.

Put our union of Synergy and Energy to work for you.

Weatherfordlabs.com

NORTH AMERICA

NAInquiries@weatherfordlabs.com

EUROPE

LATIN AMERICA

ASIA PACIFIC

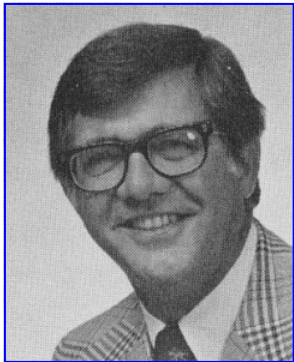
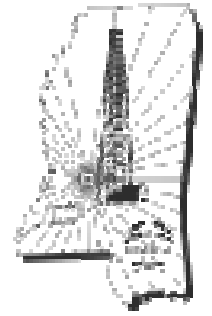
MIDDLE EAST/NORTH AFRICA

Denbury Resources, Inc

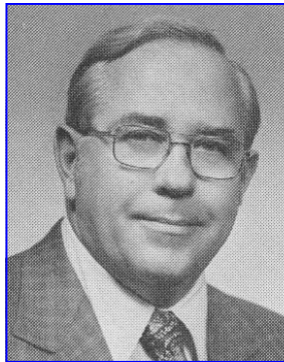
DRI

Denbury Resources Inc. is a growing independent oil and natural gas company. The Company is the largest oil and natural gas operator in Mississippi, owns the largest reserves of CO₂ used for tertiary oil recovery east of the Mississippi River, and holds significant operating acreage in Louisiana, Alabama, and Southeast Texas. The Company's goal is to increase the value of acquired properties through tertiary recovery operations, combined with a combination of exploitation, drilling and proven engineering extraction practices.

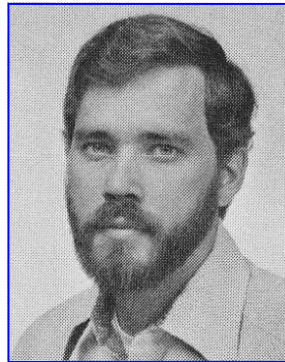
5100 Tennyson Parkway, Suite 1200
Plano, TX 75024



Ralph Hines



Dudley Hughes



Lars Johnson



Dee Layman

Quote From A Sailor*

“I take exception to everyone saying that Bernanke, Obama, and Pelosi are spending like drunken sailors.

“When I was a drunken sailor,
I quit spending when I ran out of money.”