

# NEWS

# BULLETIN

mississippi geological society



VOL. XXIV, No. 1, Sept., 1976

## MEXICAN DINNER INITIATES 38th M.G.S. YEAR

### M.G.S. DUFFER'S DELIGHT SEPT. 25

The Mississippi Geological Society will hold its annual golf tournament on Friday, September 24, 1976 at the Live Oaks Golf Club on Highway 49 North. The entrance fee is \$5.00 per person and tee off time is 9:00 a.m. to 1:00 p.m.

This tournament is expected to be another enjoyable event similar to those held in the past at Live Oaks. Refreshments and fellowship will be abundant and prizes will be awarded to high and low handicappers.

The golf pro requests that we try to tee off as early as possible to leave time for Live Oaks members to play that afternoon.

Any questions regarding the tournament should be directed to Buddy Twiner @ 969-9111 or Verne Culbertson @ 355-7831. If needed, they can help you in arranging a foursome.

### CALENDAR

- Sept. 14    PETROLEUM AUXILIARY  
2139 Sheffield Dr., 10:00 A.M. to 12:00
- Sept. 15    J.G.S. BARBEQUE  
Costas Lodge, 4:30 P.M.
- Sept. 21    M.G.S. FALL KICKOFF SUPPER  
Fowler Lodge, 4:30 P.M.
- Sept. 24    M.G.S. GOLF TOURNAMENT  
Live Oaks Golf Club, 9:00 A.M.
- Oct. 13 - 15 G.C.A.G.S. ANNUAL MEETING  
Shreveport, Louisiana

### FIRST DINNER AT FOWLER LODGE SEPTEMBER 21

The Mississippi Geological Society starts its 38th year on Tuesday, September 21, with a Mexican Dinner at Fowler Lodge. The lodge doors will open at 4:30 P.M., and beer will be available from then until closing. Dinner will be served at 6:30 P.M.

As usual, dues must be up to date, and for those who had not mailed in their dues, Treasurer Ray Lewand, will be available at the door.

Our chefs will be Doug Harper, T. C. Rader, and J. C. "Daddy-O" Phillips, so once again we are assured of a great meal. They advise the menu will be:

- Hors D'oeuvres — meat, bean, and cheese nachos served with Margaritas
- Main Course — cheese enchiladas, tacos, quacamole chalupas, and tamales
- Beverages — beer, coffee, tea

Reservations are a must, and everyone planning to attend should call T. C.'s office at 948-4128 no later than noon, Monday, September 20.

### AUXILIARY COFFEE SEPT. 14

The Petroleum Auxiliary's initial meeting of the new club year will be a coffee at the house of Mrs. Dick (Betty) Mason, 2139 Sheffield Drive, from 10:00 A.M. till 12:00, noon, September 14. Hostesses will be the new officers. As this meeting will be a "membership drive" affair, the Auxiliary is extending an informal invitations to all newcomers whose husbands are affiliated with the industry. Additional information can be obtained from Betty Mason, phone 982-2443.

## MISSISSIPPI GEOLOGICAL SOCIETY

### OFFICERS

David Cate	President	First Miss. Corp.
Sarah Childress	1st Vice Pres.	Miss. Geol. Survey
Lester Aultman	2nd Vice Pres.	Pruet & Hughes
Ed Luper	Secretary	Miss. Geol. Survey
Ray Lewand	Treasurer	Forest Oil
Jerry Zoble	Past President	Consultant

### DELEGATES

Phillip Reeves	A.A.P.G.	Cities Service Oil
Alan Jackson	A.A.P.G.	Consultant
Kevin Cahill	G.C.A.G.S.	First Miss. Corp.

### COMMITTEES AND CHAIRMEN

AAPG Membership	Phillip Reeves and Alan Jackson
Continuing Education	Don Turner
Entertainment	T. C. Rader and Doug Harper
Golf	Verne Culbertson and Buddy Twiner
Job Placement	Larry Bollman
Program	Joe Fritz
Projection	Ron Tisdale
Publicity	

### NEWS BULLETIN STAFF

Editor	Bill McGee
Advertising Mgr.	Paul Day
Petroleum Auxiliary	Annette Jeffreys
Geophysics	Ray Phillips
Photography	Dan Herlihy
Progress	Don Beal

## PRESIDENT'S NOTES

It is an honor and a pleasure to serve as the 38th President of the Mississippi Geological Society. With your support and cooperation, I will attempt to fulfill the duties of the office to the best of my abilities. I foresee a good year for the Society and any comments or criticisms you may have will be more than welcome.

Thanks to you, an excellent slate of supporting officers was selected in last May's election and they have already made my job easier. Two presidents were actually elected; myself and next year's president. This was the result of a bylaws amendment enacted last year which provides for a president-elect position to be held by the current First Vice President. This will allow better continuity of the Society's business from year to year and I can safely state the Society will have the prettiest president in its history when Sarah Childress takes office next year. Sarah is well qualified for the office by having already served as editor, secretary, and treasurer of the Society. Les Aultman is second vice president in charge of the Society's publications, Ray Lewand will operate the treasury, and Ed Luper will handle the myriad duties of the secretary's office. Last but not least, past-President Jerry Zoble will be on hand to offer advice and assistance. As your Board of Directors, we will operate the Society as best we can.

I want to briefly express my thanks to the various individuals who consented to work as committee chairmen. At the risk of offending some, I must mention two in particular. For the sixth consecutive year, T. C. Rader will be Entertainment Chairman, a job that involves a great deal of behind-the-scenes work. Bill McGee actually volunteered to edit the News Bulletin again, an undertaking that can't be fully appreciated unless you have done it yourself. The operational machinery of the Society is actually conducted by the committees and, if you are called upon to help, please do so if at all possible.

Under Jerry Zoble's leadership, the Society had a good year in 1975-76. Constructive changes were made in the bylaws, a varied program was presented, and finances were maintained in good order. The Society hosted the GCAGS Convention and numerous members contributed to make this event a resounding success. To all who worked last year to keep the Society functioning in solid fashion, I am most grateful.

Our Society year will follow the usual format but hopefully a few changes and expansions can be made along the way. A varied program for the monthly meetings is planned but with emphasis on Mississippi and southeastern geology. We will try to split the meetings between evening and noon programs in an



**M.G.S. OFFICERS FOR 1976-1977**

Pictured above are the officers for the Mississippi Geological Society, From left to right, they are: Ray Lewand, Treasurer; Ed Luper, Secretary; Les Aultman, Second Vice President; Sarah Childress, First Vice President; and Dave Cate, President.

effort to attract as many members as possible. We also plan to publish updated field supplements for the Redbooks which has not been done since 1972. If you are called upon to supply data, maps, and logs, please do so as completely as possible in order to make the finished product work publishing. One and possible two short seminars on a geological subject and/or related field subject will be held. A short field trip of some type will also be considered. In addition to the September golf tournament, the traditional fall and spring barbecues will be held but will be somewhat different this year. In addition to these events, another Ladies Night is planned this spring because of the big response it received last year. Other events may be scheduled as the year progresses and time and finances permit.

As others have done in the past, I want to encourage you to support the Society to the fullest. Let's put aside personal piques and prejudices and concentrate on making the Society a sound and forceful organization. There were 372 members in the Society at the end of 1975-76, 203 of which resided in Jackson. I don't think it is impossible to expect at least 100 members and guests at each function but we seldom get that many except at the barbecues and beer busts. We can do much better and if you have comments or suggestions concerning this, please let me know.

The Society is primarily a petroleum oriented society, both professionally and socially. As such, the problems facing the petroleum industry should be of utmost concern to all members. We all know these problems by now and there is no point expounding on them here. However, I urge each and every member to express his individual views at every opportunity, especially to those not related to the petroleum industry. I believe the Society as a group should take a stronger and louder stand on the issues of today and, as the situation arises, I and the Board of Directors will attempt to do so.

I hope the Society year will be worthwhile to you. Let's start the year off right by turning out in force for the September outing at Fowler's Lodge.

David Cate

#### FRIENDS OF THE SOCIETY

CORE LABORATORIES	JUSTISS-MEARS OIL CO.
WYATT CRAFT	HILTON LADNER
JACK DANIEL	LOCATION SPL. SERVICE
DRESSER-ATLAS	OIL WELL LOGGING
ENGINEERING SERVICE	PRUET & HUGHES CO.
XAVIER M. FRASCOGNA	RIDGWAYS
FLA. GAS EXPLN. CO.	CLAYTON W. WILLIAMS

#### BYLAW AMENDMENT PASSES

A proposal to amend Article IX - Dues and Assessments of the Mississippi Geological Society was approved last May by members voting by mailed ballot. Total vote was 46 for and 6 against. The part of Article IX that was amended formerly read as follows:

The annual dues of Active and Associate members shall be Five Dollars (\$5.00) payable at the beginning of each fiscal year. The fiscal year of the Society shall be June 1st through May 31st.

It now reads as follows:

The annual dues of Active and Associate members shall be determined by the Board of Directors at the end of each fiscal year. Any proposed increase in dues shall be presented for approval to the membership present at the last regular meeting of the fiscal year. Upon approval by a majority vote, the new dues shall become payable at the beginning of the following fiscal year which shall be from June 1st through May 31st.

#### PERSONAL NOTES

Congratulations to Jack Moody (Shenandoah) on his recent promotion to District Manager. He now is responsible for Shenandoah's exploration east of the Mississippi, plus North Louisiana and South Arkansas.

Returned to the fold is Jim White. Jim transferred to Houston with Marr Company, but hometies were too strong, and he is now back in Jackson with Freedom Oil.

Joe Fritz recently joined forces with Marion Corporation. And, Bob Womack is now representing Masonite Corporation.

World-travelers Emil Monsour and Bob Womack are planning a trip through New England this fall. Perhaps they later will tell us as to the truth to the claims that Vermont autumns are comparable to Mississippi autumns!

#### FRIENDS OF THE SOCIETY

Who are the "friends" of this society? Look to the left of this column. They are the individuals and/or companies to which you are indebted to for our "happy hours", sometime dinners, and golf awards (among other goodies). So - - - remember! (Ed.)

## JGS BARBECUE WEDNESDAY, SEPTEMBER 15

The Jackson Geophysical Society will hold its annual fall barbecue on Wednesday, September 15, at Costa's Lodge. JGS President Ray Phillips announced that this "whole Hog" barbecue will be held in conjunction with JGS's annual membership drive. Also according to Ray, plenty of hog and beer will be available, and the door will open at 4:30 P.M.

### '76 - '77 JGS OFFICERS

President Ray Phillips (Geophysical Field Surveys)  
Vice President Tom Wood (Forest Oil)  
Sec.-Treas. Frank Bell (Geophysical Field Surveys)

### 1976 - 1977 AUXILIARY OFFICERS

New officers of the Petroleum Auxiliary are:

President Mrs. Stewart (Jane) Webb  
1st Vice President Mrs. Don (Joanne) Champlin  
2nd Vice President Mrs. Roger (Janet) Dickerson  
Secretary Mrs. Homer (Mary Katherine) Linn  
Treasurer Mrs. Dan (Mary) Herlihy  
Reporter Mrs. Rodney (Annette) Jeffreys

### ARK-LA-TEX LOG LIBRARY TO OPEN

The Ark-La-Tex Log Library, Inc., announces that it is ready to accept 100 members. The library will be located at 108 Beck Building. The office space will be available upon completion of remodeling. This log library is incorporated as a non-profit corporation and may receive tax deductible contributions through Centenary College.

Purposes of the corporation is to obtain and acquire for the use of its members a collection and source of geological and production information relating primarily to the states of Texas, Louisiana, Mississippi, Arkansas, Alabama, Florida and Georgia. Data will consist of electrical well logs, scout cards, geological and technical reference books and publications, geological maps and any and all other materials and/or references which may be considered as a source of geological and production information.

Additional information is available from Bill McGee, phone 969-0100.

## AAPG OFFICERS FOR '76 - '77

In the last day of its 1976 national convention, President John E. Kilkenny of the American Association of Petroleum Geologists has announced that the following persons have been elected by membership ballot to serve on the 1976-77 executive committee which heads the 18,000 member organization.

Edd R. Turner, with Getty Oil in Houston, has been elected president for the 1977-78 term and will serve as president-elect during 1976-77.

Elected to the vice-presidency was Ralph L. Miller, senior geologist with the U.S. Geological Survey in Reston, Va.

Beginning a two-year term as the association's treasurer will be George S. Galbraith, independent geologist from Abilene, Tex.

Serving with the recently elected officers whose terms begin July 1 will be incumbent president-elect John D. Moody of New York City. Moody is a consultant, and will accede to the presidency. Robey H. Clark, vice president of Diamond Shamrock in Amarillo, will serve the second year of a two-year term as secretary. Also serving the remainder of his two-year term will be Editor John W. Shelton, geology professor at Oklahoma State University, Stillwater, Okla.

### AAPG '77 - '78 CANDIDATE SLATE:

#### ALL INDEPENDENTS

An extensive release, with biographical information on each candidate, will be forthcoming this fall. The slate of candidates is as follows:

#### President-Elect

Robert D. Gunn, Independent, Wichita Falls, Texas  
M. O. Turner, Independent, San Antonio, Texas

#### Vice-President

Edwin P. Kerr, Jr., Independent, Oklahoma City, Okla.  
Wilbur E. McMurtry, Independent, Oklahoma City, Okla.

#### Secretary

John J. Amoruso, Independent, Houston, Texas  
Clifton J. Nolte, Independent, Denver, Colorado

#### Editor

John W. Shelton, Professor of Geology, Oklahoma State University, Stillwater, Oklahoma.

PROGRESS – APRIL, MAY, JUNE, JULY, 1976

Mississippi Completions

Exploratory	Oil	Gas	Dry
Eocene	3	0	36
UK	0	0	5
LK	1	4	4
Jurassic	0	0	2
Paleozoic	0	0	3
Development	Oil	Gas	Dry
Eocene	17	0	26
UK	8	0	5
LK	1	2	6
Jurassic	2	1	3
Paleozoic	0	4	4

GETTING ON WITH IT

Based on P.I.'s data for the quarter ending July 31, 1976, there just might be room for optimism. The list below constitutes the "most ever" in our history. See for yourself. (Ed.)


New Field Discoveries

Bowie Creek	SLAPCO No. 1 Aultman Sec. 2-6-N-16W, Covington Co. Perfs. 15190' - 216' (Hosston) 1P 3,200MCFGPD, 48BCPD, 48BWPD 1/4" ch., T.P. 2040#	W. Butler Lake	El Toro & Secan No. 1 New Era Sec. Acc. -6N-3W Adams Co. Perfs. 6227' - 28' (Campbell) 1PF 151BOPD 8/64", T. P. 425#
McRaney	Union Oil Cal. No. 1 Dale Sec. 3-7N-17W, Covington Co. Perfs 15452' - 520' (Hosston) 1P 1,367MCF, 170 BC. 12/64", T.P. 3104#	Mystic Bayou	Fortenberry Drlg. No. 3 Hill Sec. 61-7N-1W, Adams Co. Perfs. 4614' - 17' (Stewart "B") 1PF 60 BOPD 11/64", T.P. 640#
Mt. Hope	Radzewicz & Assoc. - Radzewicz No. 1 Schurhardt - Brown Un. Sec. 30 - 6N - 3W, Adams Co. Perfs. 3416' - 18 1/2' (Sparta) 1PF100 BOPD 8/64", T.P. 230#	Crawford Creek	Damson No. 1 Patterson Sec. 28-7N-7W, Wayne Co. Perfs. 12144-170' (Hosston) 1PF 97BOPD 22/64", T. P. 20-55#
Monticello	Inexco Oil No. 2 George Sec. 14-7N-21W, Lawrence Co. Perfs. 15501' - 16417' (Hosston) 1PF2,100MCFGPD, 80BCPD 18/64", T.P. 1250#	Clear Run	Florida Gas No. 1 Unit 9-7 Sec. 9-6N-16W, Jefferson Davis Co. Perfs. 15464' - 500' O.A. (Hosston) 1PF 1,852MCFGPD, 45BCPD, 114BWPD 1/4", T.P. 1655#

<b>A &amp; N PRODUCING SERVICES, INC.</b>	
709 Standard Life Building	P. O. Box 1669
Jackson, Mississippi 39205	
<b>AMERICA SOUTHWEST CORP.</b>	
Box 936, Jackson, Miss.	354-2513
Jack Pryor, Jr., Exec. V.P.	Charlie Barton, Geol. - Land
<b>THE ANALYSTS</b>	
Core Analysis - Mud Logging Laurel - Ph. 649-3444	
Bunk Caldwell	Frank Howson
<b>ATWATER, CARTER, MILLER &amp; HEFFNER</b>	
Consulting Geologists and Engineers 424 Whitney Bank Building New Orleans, Louisiana 70130 (501) 581-6527	
<b>DAVID K. BROOKS</b>	
660 Milner Building Oil Exploration Jackson, Mississippi 948-5722	
<b>BROWNING &amp; WELCH GEOLOGISTS</b>	
Suite 1411, Standard Life Building Jackson, Mississippi 39201	
<b>C &amp; K PETROLEUM, INC.</b>	
1800 Capital Towers	601-948-1111
Jackson, Mississippi 39201	
<b>CALLON PETROLEUM CO.</b>	
P. O. Box 1287	Natchez, Mississippi 39120
<b>CAPITOL PRINTING &amp; BLUE PRINT COMPANY</b>	
330 East Rankin Street	353-2751
Jackson, Miss. 39202	
<b>L. WICK CARY</b>	
Room 932 Consulting Geophysicist	Box 50391
National Bank of Commerce Bldg.	New Orleans, La.
<b>THOMAS H. CLEMENTS</b>	
1738 Capital Towers Consulting Geophysicist	Phone 601-355-8724
Jackson, Mississippi 39201	
<b>CORE LABORATORIES, INC.</b>	
Core Analysis and Well Logging	
Laurel	New Orleans
601-425-3394	504-524-6256
Jackson	Mobile
601-932-1492	205-456-2271
<b>CRAFT PETROLEUM CO., INC.</b>	
Wyatt E. Craft	
Exploration	Operations

<b>CRUDE OIL PURCHASING, INC.</b>	
P. O. Box 22660	Phone 601-948-5853
Jackson, Mississippi 39205	
<b>DRESSER-ATLAS</b>	
Jackson, Mississippi	948-5591
<b>ENSERCH EXPLORATION, INC.</b>	
Maurice N. Birdwell District Manger	
1530 Capital Towers	P. O. Box 219
Jackson, Mississippi 39205	601-969-0100
<b>EXCHANGE OIL AND GAS CORPORATION</b>	
1010 Common Street, New Orleans 504-581-4111	
<b>HERBERT J. FERBER</b>	
Consulting Geophysicist	
5456 Hartsdale Drive	956-4666
Jackson, Mississippi	
<b>FLORIDA GAS EXPLORATION CO.</b>	
1444 Capital Towers Jackson, Mississippi 39201	
<b>WADE FORTENBERY</b>	
Geologist	
P. O. Box 1183 - Natchez, MS	Bus. 442-6011
Office Hwy. 61 South	Res. 442-3250
<b>JOSEPH F. FRITZ</b>	
Petroleum Geologist	
Jackson, Miss.	601-354-1134
<b>H. LEROY FULGHUM</b>	
Consulting Geologist	
257 Valley Vista Drive	601-956-6346
Jackson, Mississippi 39211	
<b>JAMES B. FURRH, JR.</b>	
Oil Producer	
1236 Capital Towers	Jackson, Mississippi
<b>GEOPHYSICAL DATABANKS, INC.</b>	
1234 Loyola Bldg.	Room 303
New Orleans, La. 70112	504-581-4724
Grady Loftin Jim Malone	
CDP data available in the following area:	
Gulf Coast Appalachians Rockies	
Agents for Petroconsultants, S.A.	
<b>GEOPHYSICAL FIELD SURVEYS, INC.</b>	
Seismic Exploration	
Room 201	Jackson, MS
975 North Street	
P. O. Box 12304, Colonial Station	601-948-1580
<b>GERMANY INVESTMENT CO.</b>	
Norman G. Germany	E. Wilson Germany
Dallas, Texas	Natchez, Mississippi
<b>GUARDIAN OIL COMPANY</b>	
L. Graham Hughes	Charles S. McClelland
1636 Capital Towers	Jackson, Mississippi

<b>G. W. GULMON &amp; ASSOCIATES</b> Petroleum Geologist Natchez, Mississippi H. E. Hansen, Dallas                      A. T. Ricci, Jr., Natchez	
<b>CLAUDE B. HAMMILL</b> Oil Operator 2306 First Nat'l Bank Bldg.                      Houston, TX 77002	
<b>W. L. HARPER</b> Geophysical Consultant 115 Sterling Towers                      Jackson, MS 39202 Phone 601-352-3339	
<b>GEORGE H. ISBELL, JR.</b> Geologist 1240 Capitol Towers                      Phone: (601) 948-4881	
<b>ALAN JACKSON</b> Consulting Geologist                      Telephone 601-582-1192 503 Mandalay Drive                      Hattiesburg, Mississippi 39401	
<b>ROBERT R. JACOBS</b> Petroleum Geologist P. O. Box 16263                      Jackson, MS 39206 363-4846	
<b>JUSTISS-MEARS OIL CO., INC.</b> P. O. Drawer "N"                      Lena, Louisiana 71342 318-992-4000	
<b>H. E. KARGES</b> Consulting Geologist 1812 Capital Towers                      P. O. Box 1635 Phone 352-0972                      Jackson, MS 39205	
<b>K. B. KEARY, JR.</b> Petroleum Geologist 439 W. Northside Dr.                      Jackson, MS 39206                      362-4895	
<b>WILBUR H. KNIGHT</b> Consulting Geologist 1017 First Nat'l Bank Bldg.                      Jackson, Miss. 355-1528	
<b>HILTON L. LADNER</b> Petroleum Geologist 903 FNB Building                      Jackson, Mississippi                      354-3616	
<b>LARCO DRILLING COMPANY, INC.</b> Suite 1700                      Jackson, Miss. 39201 Capital Towers                      Phone 355-1542	
<b>R. E. (Dick) LEE AND ASSOCIATES</b> The Redd Building                      4443 I-55 North P. O. Box 5168                      Jackson, MS 39216	
<b>LOCATION SAMPLE SERVICE, INC.</b> Well-logging Services                      Core Analysis  Bob Legate P. O. Box 9733, NSS                      Home Office: 601-932-1410 Jackson, MS 39206                      Home: 601-939-0390	
<b>MILLER OIL PURCHASING CO.</b> A Division of Ergon, Inc. P. O. Box 1308                      Jackson, Mississippi 39205	

<b>MOON-HINES</b> Robert M. Moon                      601-354-3753                      E. R. Hines, Jr. 1804 Capital Towers                      Jackson, Mississippi 39201	
<b>M. D. (DALE MYERS)</b> Certified Petroleum Geologist P. O. Box 10553                      601-355-3536                      Jackson, MS 39209	
<b>OIL WELL LOGGING, INC.</b> Glenn Clark                      Harvey Koehne P. O. Box 16039                      P. O. Box 318 Jackson, MS                      Ellisville, MS 354-3642                      477-8315	
<b>MARVIN L. OXLEY</b> 134 South Lamar St.                      601-969-4149 Jackson, MS 39201                      601-956-6446	
<b>MORTON M. PHILLIPS</b> Petroleum Geologist 902 Milner Bldg.                      Ph. 355-3364                      Jackson, MS 39201 Ph. 366-9665	
<b>WILLIAM H. PLAYER &amp; ASSOCIATES</b> P. O. Box 1383 108 Wall St.                      Natchez, MS	
<b>PRUET &amp; HUGHES COMPANY</b> 1111 Capital Towers Building Jackson, Mississippi 39201	
<b>PAUL ANTHONY RADZEWICZ</b> Oil Producer 1829 Deposit Gty. Bldg.                      Jackson, MS 39201 969-3950	
<b>RIDGWAYS</b> 103 E. Pearl Street                      355-4751 Jackson, Mississippi	
<b>SCHLUMBER WELL SERVICES</b> Jackson, Mississippi                      Phone 352-8589	
 <b>Seismograph Service Corporation</b> <small>A SUBSIDIARY OF BAYTECH COMPANY</small> P O Box 1590 • Tulsa, Okla 74102 • (918) 627-3330 <small>DISTRICT OFFICES AND DATA PROCESSING CENTERS</small> HOUSTON • MIDLAND • DENVER • ALMA, MI	
<b>SOUTHERN NATURAL GAS CO.</b> P. O. Box 1513                      Houston, Texas Donald R. Scherer, Dist. Geologist                      622-7270	
<b>ROBERT L. THOMSEN</b> 1818 Capital Towers                      P. O. Box 1847 Jackson, Mississippi	
<b>WOOLF &amp; MAGEE, INC.</b> P. O. Box 3566, Tyler, Texas 75701 J. W. Arnold, Pres.                      Allen W. Woolf, Vice Pres. W. D. Magee, Jr., Sec.-Treas.                      A. B. Irion, Drig. Supt. Tyler, TX AC214-562-4051-Natchez, MS AC601-445-4570 Rotary Rigs in Texas, Louisiana, Arkansas, Mississippi and Alabama	

**ROBERT WOMACK, JR.**  
 Consulting Geologist  
 1508 Standard Life Bldg.                      Jackson, MS 39201  
 Phone 353-4650

MISSISSIPPI GEOLOGICAL SOCIETY  
P. O. BOX 422  
JACKSON, MS 39205



# NEWS

# BULLETIN

mississippi geological society

VOL. XXIV, No. 2, Oct., 1976



## STATUS OF MISS. GEOLOGISTS - OCT. 19

### FRITZ TO DISCUSS MISS. GEOLOGISTS' OVERVIEW

On October 19, JOE FRITZ will address the noon meeting of M.G.S. at the Smackover Room of the Capitol City Petroleum Club. The title of Joe's talk is "What Mississippi Geologists Are Doing Today". The talk will include a general summary of the state of the profession in Mississippi, a discussion on professionalism, comments on our relatively low salary and fee rates, and other aspects of especial concern to the membership of our society. The talk will be of interest to all Mississippi geologists -- independents, consultants, major company employees, state survey employees -- in short, the gamut.

Joe, who is President of the Mississippi section of the A.P.G.S., is with the Marion Corporation. Before joining Marion in July, 1976, he had been an independent for 15 years, following a 7 year stint with Humble.

Call T.C. RADER, 948-4128, no later than noon, Monday, October 18 for reservations.

### CALENDAR

Oct. 13-15	G.C.A.G.S. ANNUAL MEETING Shreveport, Louisiana
Oct. 18	J.G.S. EVENING MEETING Primos Northgate
Oct. 19	M.G.S. NOON MEETING Capitol City Petroleum Club
Nov. 9	AUXILIARY COVERED DISH LUNCHEON Riverside Park

### OIL AND GAS BOARD LOGS- USE OR MISUSE?

(This article, submitted by the Past President of the Mississippi Section, A.P.G.S., may be the catalyst for a drive towards an equitable arrangement. Ed.)

Several years ago, through the efforts of the Mississippi Section of the A.I.P.G. (now the A.P.G.S.) a rule was established by the Oil and Gas Board which allowed logs to be removed for a maximum of 24 hours for blueprint reproduction. In practice, the staff of the Board went quite a bit further and generously allowed individuals to check out logs (supposedly for a day or two) for their use.

This was quite a bother for some of the staff, but I know it was greatly appreciated by most of us who use the logs regularly or occasionally. From the start, there have been a few people, mostly geologists, who abused the privilege of borrowing logs by keeping them much longer than they should. This not only made them unavailable at the Board for the public's use, but put additional burden on the staff in trying to get them back.

Shortly after the new Supervisor came to office, several different logs were sought by the staff in the office and all had been checked out for two or three weeks. The rule was immediately revoked; which privilege had been originally given the Supervisor if the system did not work. I have no quarrel with the Supervisor or staff in this matter. They have been most cooperative throughout the period in the face of considerable inconvenience. But I am very irritated at a few geologists whose actions have destroyed a very valuable working arrangement with the Board. Because of the inconsideration of a few, all of us again have a problem that had been resolved. These

**MISSISSIPPI GEOLOGICAL SOCIETY**

**OFFICERS**

David Cate	President	First Miss. Corp.
Sarah Childress	1st Vice Pres.	Miss. Geol. Survey
Lester Aultman	2nd Vice Pres.	Pruet & Hughes
Ed Luper	Secretary	Miss. Geol. Survey
Ray Lewand	Treasurer	Forest Oil
Jerry Zoble	Past President	Consultant

**DELEGATES**

Phillip Reeves	A.A.P.G.	Cities Service Oil
Alan Jackson	A.P.G.	Consultant
Kevin Cahill	G.C.A.G.S.	First Miss. Corp.

**COMMITTEES AND CHAIRMEN**

AAPG Membership	Phillip Reeves and Alan Jackson
Continuing Education	Don Turner
Entertainment	T. C. Rader and Doug Harper
Golf	Verne Culbertson and Buddy Twiner
Job Placement Program	Larry Bollman Joe Fritz
Projection Publicity	Bill Irwin

**NEWS BULLETIN STAFF**

Editor	Bill McGee
Advertising Mgr.	Paul Day
Petroleum Auxiliary	Annette Jeffreys
Geophysics	Ray Phillips
Photography	Dan Herlihy
Progress	Don Beal

Those of you who missed the Society's Mexican dinner on September 21 missed a memorable event. We broke with tradition and, instead of the usual barbecue to kick off the year, tried something new. **Doug Harper**, with the help of **T. C. Rader** and **Daddy-O Phillips** prepared a feast of Mexican food that was completely and enthusiastically consumed by the 130 members and guests present. Appreciation is also due to **Jerry Zoble**, **Doug Tupperwein**, **Bob Mansfield**, and **Claus Engelhardt** for helping in the kitchen. **Jack Pryor's** prowess at mixing a tasty and potent margarita cannot be questioned. Some of us remembered Jack's cactus juice well into the next day.

The dinner was followed on September 24 by the annual fall golf tournament at Live Oaks Golf Club. Despite a well managed event by **Verne Culbertson** and **Buddy Twiner**, beautiful golf weather, and a substantial sponsor list, the tourney was poorly attended. This has been the trend in recent years and this year's attendance was the lowest since the tourney's inception. Whether this is due to a lack of golfers, a lack of interest, or a combination of both is not clear. However, the time, money, and effort that goes into staging the tournament is more than can be justified by the meager turnouts. Unless the trend is reversed, it may be necessary to either cancel this enjoyable event or replace it with some other activity. Comments on this situation are requested.

Elsewhere in this Bulletin is an article by **Harold Karges** concerning the use (or misuse) of electrical logs from the Mississippi Oil and Gas Board. The article speaks for itself and should be seriously considered by all. Many of us used this service regularly and found it to be a most convenient way to obtain logs otherwise not released or generally available. Now that it is no longer available, we realize how valuable and useful the service was. Perhaps it is not too late to rectify the situation. If you are interested in doing so, please contact the Board and express your desire to see the ruling reinstated.

David Cate

**OIL & GAS BOARD LOGS  
(continued)**

few are all good people, but they have failed to give adequate consideration to their fellow geologists and other oil people, as well as the staff of the Board.

Now to a solution. I feel that we will be able to convince the Supervisor of the Oil and Gas Board that the rule as originally designed is workable. I personally chose not to rush at him with a request, because I felt we all needed to appreciate what a nice deal we had and how we messed it up. I, for one, do intend to talk to the Supervisor and maybe others would like to do likewise.

Harold E. Karges

**FRIENDS OF THE SOCIETY**

CORE LABORATORIES	HILTON LADNER
WYATT CRAFT	LARCO DRLG. CO.
JACK DANIEL	LOCATION SPL. SERVICE
DRESSER-ATLAS	OIL WELL LOGGING
ENGINEERING SERVICE	PEPPARD-SOUDERS AND
XAVIER M. FRASCOGNA	ASSOCIATES
FLA. GAS EXPLN. CO.	PRUET & HUGHES CO.
FORREST OIL CO.	RIDGWAYS
GEOL. CONSULTING SERV.	TOBIN MAP
HALLIBURTON	JAMES M. WHITE
JUSTISS-MEARS OIL CO.	CLAYTON W. WILLIAMS

**TEXANS HEAD '77-'78  
AAPG CANDIDATES' SLATE**

Independent petroleum geologists from Texas will head the slate of candidates for office in the American Association of Petroleum Geologists in an election to be held in the spring. Robert Gunn, Wichita Falls, will oppose M. O. Turner, San Antonio, for president-elect. The successful candidate will serve in that office for one year and assume the presidency of AAPG in July, 1978. These and other candidates were announced by John D. Moody, current president.

Gunn, a native of St. Paul, Minnesota, is a graduate of the University of Minnesota and studied petroleum engineering at Tulsa University. He served as an Air Force pilot during the second World War and began his career as a geologist with Texaco in Wichita Falls in 1949. In 1953, Gunn became a consulting geologist in Wichita Falls, and in 1958 established himself as an independent oil operator.

Turner was born in Magnolia, Texas and graduated from the University of Houston after serving in submarines during World War II. His first job in petroleum geology was with Stanolind (now AMOCO) in Corpus Christi and later with the same company in San Antonio and Houston. In 1954, Turner became a consulting geologist and independent oil operator in San Antonio.

Candidates for vice-president are Edwin P. Kerr and Wilbur E. McMurtry, both of Oklahoma City.

Kerr, a native of Marietta, Oklahoma and a graduate of the University of Oklahoma, began his career with Phillips in Bartlesville and subsequently worked for Bay Petroleum in New Mexico, for Northern Natural Gas in Midland and Omaha, and for Mobil in Oklahoma City. In 1973, he became an independent exploration geologist.

McMurtry was born in Drumright, Oklahoma and graduated from the University of Oklahoma. He has held geologic positions with Magnolia (now Mobil), Phillips, and Stanolind (now AMOCO). In 1954, he established his practice as a consulting geologist.

**PROGRESS - AUGUST, 1976**

**Mississippi Completions**

Exploratory	Oil	Gas	Dry
Eocene	1	0	13
UK	0	0	3
LK	0	0	0
Jurassic	0	1	2
Paleozoic	0	0	2

Development	Oil	Gas	Dry
Eocene	3	0	4
UK	8	0	3
LK	1	1	2
Jurassic	1	1	0
Paleozoic	0	0	0

**DUFFER'S DELIGHT REPORT**

**Verne Culbertson and Buddy Twiner** vow that the M.G.S. fall golf tournament was an unqualified success – TO THOSE FEW WHO WERE THERE! Verne reports that there were only 32 golfists, but they really enjoyed. The hangers-on did too, especially those absorbed in watching the antics of **Don Smith** admiring the live oaks, **Buddy** hawking his Lite beer, and **Marvin Oxley** gallumphing after a perfectly-driven, but unfortunately wind-caught, ball. (Wind velocity Sept. 24: 0.0 mph. Ed.)

Verne reports also that the 1976 tournament resulted in a \$96 deficit. Of that deficit, \$91 is attributable to Buddy, who bought all that Lite, Schiliz, Tea, Pepsi, etc. (To be serious, at last, the golf tournament is a break-even function wherein the magic number is 50 registrants.

Winners in the various categories were:


Low gross	Ken Pinkston	(73)
2nd low gross	Frank Bell	(76)
Low net	Charles Barton	(73)
2nd low net	Mike Pryor	(73)
Longest drive	Jack Pryor	(297 yds)
Closest to hole (*7)	Harold Karges	(36 ft)
Least putts	Verne Culbertson	(27)
Most birdies	Steve Dennis	(4)
Most pars	R.C. Howard	(10)
Most 3's	Bruce deBartolo	(3)
Most 4's	Fred Lewis	(7)
Most 5's	Alan Jackson	(11)
Most 6's	Tom Taylor	(9)
Low ball foursome:	(Ken Pinkston Steve Dennis Frank Bell)	(65)
Most improved	Charles McCelland	(12 strokes)
High gross	Jerry Kinsley	(112)

For hitting the green on No. 7 a Titleist golf ball was awarded to: Harold Karges, Ken Pinkston, Frank Bell, Verne Culbertson.



**New Field Discoveries**

Unnamed	Dorbandt et al No. 1 Armstrong-Longmire Sec. 2-5N-2W, Adams Co. Perfs. 6502½'-6530½' (Jenkins) 1PF 83BOPD 10/64", T.P. 140
Unnamed	Marion Corp. No. 1 Garner et 21 Sec. 23-6N-6E, Scott Co. Perfs. 14468'-14677' (O.A.) (Smk.) 1PF 5.374MCFGPD, 120BCPD 7/64", T.P. 2743

<p><b>G. W. GULMON &amp; ASSOCIATES</b> Petroleum Geologist Natchez, Mississippi H. E. Hansen, Dallas      A. T. Ricci, Jr., Natchez</p>	<p><b>MOON—HINES</b> Robert M. Moon      601-354-3753      E. R. Hines, Jr. 1804 Capital Towers      Jackson, Mississippi 39201</p>
<p><b>CLAUDE B. HAMMILL</b> Oil Operator 2306 First Nat'l Bank Bldg.      Houston, TX 77002</p>	<p><b>M. D. (DALE) MYERS</b> Certified Petroleum Geologist P. O. Box 10553      601-355-3536      Jackson, MS 39209</p>
<p><b>W. L. HARPER</b> Geophysical Consultant 115 Sterling Towers      Jackson, MS 39202 Phone 601-352-3339</p>	<p><b>OIL WELL LOGGING, INC.</b> Glenn Clark      Harvey Koehne P. O. Box 16039      P. O. Box 318 Jackson, MS      Ellisville, MS 354-3642      477-8315</p>
<p><b>GEORGE H. ISBELL, JR.</b> Geologist 1240 Capitol Towers      Phone: (601) 948-4881</p>	<p><b>MARVIN L. OXLEY</b> 134 South Lamar St.      601-969-4149 Jackson, MS 39201      601-956-6446</p>
<p><b>ALAN JACKSON</b> Consulting Geologist      Telephone 601-582-1192 503 Mandalay Drive      Hattiesburg, Mississippi 39401</p>	<p><b>MORTON M. PHILLIPS</b> Petroleum Geologist 902 Milner Bldg.      Ph. 355-3364      Jackson, MS 39201 Ph. 366-9665</p>
<p><b>ROBERT R. JACOBS</b> Petroleum Geologist P. O. Box 16263      Jackson, MS 39206 362-4846</p>	<p><b>WILLIAM H. PLAYER &amp; ASSOCIATES</b> P. O. Box 1383 108 Wall St.      Natchez, MS</p>
<p><b>JUSTISS—MEARS OIL CO., INC.</b> P. O. Drawer "N"      Lena, Louisiana 71342 318-992-4000</p>	<p><b>PRUET &amp; HUGHES COMPANY</b> 1111 Capital Towers Building Jackson, Mississippi 39201</p>
<p><b>H. E. KARGES</b> Consulting Geologist 1812 Capital Towers      P. O. Box 1635 Phone 352-0972      Jackson, MS 39205</p>	<p><b>PAUL ANTHONY RADZEWICZ</b> Oil Producer 1829 Deposit Gty. Bldg.      Jackson, MS 39201 969-3950</p>
<p><b>K. B. KEARY, JR.</b> Petroleum Geologist 439 W. Northside Dr.      Jackson, MS 39206      362-4895</p>	<p><b>RIDGWAYS</b> 103 E. Pearl Street      Jackson, Mississippi      355-4751</p>
<p><b>WILBUR H. KNIGHT</b> Consulting Geologist 1017 First Nat'l Bank Bldg.      Jackson, Miss. 355-1528</p>	<p><b>SCHLUMBER WELL SERVICES</b> Jackson, Mississippi      Phone 352-8589</p>
<p><b>HILTON L. LADNER</b> Petroleum Geologist 903 FNB Building      Jackson, Mississippi      354-3616</p>	<p><b>Seismograph Service Corporation</b>  A SUBSIDIARY OF RAYTHEON COMPANY P. O. Box 1590 • Tulsa, Okla. 74102 • (918) 627-3330 DISTRICT OFFICES AND DATA PROCESSING CENTERS HOUSTON • MIDLAND • DENVER • ALMA, MI</p>
<p><b>LARCO DRILLING COMPANY, INC.</b> Suite 1700      Jackson, Miss. 39201 Capital Towers      Phone 355-1542</p>	<p><b>SOUTHERN NATURAL GAS CO.</b> P. O. Box 1513      Houston, Texas Donald R. Scherer, Dist. Geologist      622-7270</p>
<p><b>R. E. (Dick) LEE AND ASSOCIATES</b> The Redd Building      4443 I-55 North P. O. Box 5168      Jackson, MS 39216</p>	<p><b>ROBERT L. THOMSEN</b> 1818 Capital Towers      Jackson, Mississippi      P. O. Box 1847</p>
<p><b>LOCATION SAMPLE SERVICE, INC.</b> Well-logging Services      Core Analysis Bob Legate P. O. Box 9733, NSS      Home Office: 601-932-1410 Jackson, MS 39206      Home: 601-939-0390</p>	<p><b>WOOLF &amp; MAGEE, INC.</b> P. O. Box 3566, Tyler, Texas 75701 J. W. Arnold, Pres.      Allen W. Woolf, Vice Pres. W. D. Magee, Jr., Sec.-Treas.      A. B. Irion, Drig. Supt. Tyler, TX AC214-562-4051—Natchez, MS AC601-445-4570 Rotary Rigs in Texas, Louisiana, Arkansas, Mississippi and Alabama</p>
<p><b>MILLER OIL PURCHASING CO.</b> A Division of Ergon, Inc. P. O. Box 1308      Jackson, Mississippi 39205</p>	<p><b>ROBERT WOMACK, JR.</b> Consulting Geologist 1508 Standard Life Bldg.      Jackson, MS 39201 Phone 353-4650</p>

**A & N PRODUCING SERVICES, INC.**

709 Standard Life Building P. O. Box 1669  
Jackson, Mississippi 39205

**AMERICA SOUTHWEST CORP.**

Box 936, Jackson, Miss. 354-2513  
Jack Pryor, Jr., Exec. V.P. Charlie Barton, Geol. - Land

**THE ANALYSTS**

Core Analysis - Mud Logging  
Laurel - Ph. 649-3444

Bunk Caldwell Frank Howson

**ATWATER, CARTER, MILLER & HEFFNER**

Consulting Geologists and Engineers  
424 Whitney Bank Building  
New Orleans, Louisiana 70130  
(501) 581-6527

**DAVID K. BROOKS**

660 Milner Building Oil Exploration Jackson, Mississippi  
948-5722

**BROWNING & WELCH  
GEOLOGISTS**

Suite 1411, Standard Life Building  
Jackson, Mississippi 39201

**C & K PETROLEUM, INC.**

1800 Capital Towers 601-948-1111  
Jackson, Mississippi 39201

**CALLON PETROLEUM CO.**

P. O. Box 1287 Natchez, Mississippi 39120

**CAPITOL PRINTING & BLUE PRINT COMPANY**

330 East Rankin Street 353-2751  
Jackson, Miss. 39202

**L. WICK CARY**

Room 932 Consulting Geophysicist Box 50391  
National Bank of Commerce Bldg. New Orleans, La.

**THOMAS H. CLEMENTS**

Consulting Geophysicist  
1738 Capital Towers Phone 601-355-8724  
Jackson, Mississippi 39201

**CORE LABORATORIES, INC.**

Core Analysis and Well Logging

Laurel New Orleans  
601-425-3394 504-524-6256  
Jackson Mobile  
601-932-1492 205-456-2271

**CRAFT PETROLEUM CO., INC.**

Wyatt E. Craft

Exploration Operations

**LARRY WALTER**

Consulting Geologist 601-969-1260  
1536 Deposit Guaranty Plaza Jackson, Miss. 39201

**CRUDE OIL PURCHASING, INC.**

P. O. Box 22660 Phone 601-948-5853  
Jackson, Mississippi 39205

**DRESSER-ATLAS**

Jackson, Mississippi 948-5591

**ENSERCH EXPLORATION, INC.**

Maurice N. Birdwell  
District Manger  
1530 Capital Towers P. O. Box 219  
Jackson, Mississippi 39205 601-969-0100

**EXCHANGE OIL AND GAS CORPORATION**

1010 Common Street, New Orleans  
504-581-4111

**HERBERT J. FERBER**

Consulting Geophysicist 956-4666  
5456 Hartsdale Drive  
Jackson, Mississippi

**FLORIDA GAS EXPLORATION CO.**

1444 Capital Towers  
Jackson, Mississippi 39201

**WADE FORTENBERY**

Geologist  
P. O. Box 1183 - Natchez, MS Bus. 442-6011  
Office Hwy. 61 South Res. 442-3250

**JOSEPH F. FRITZ**

Petroleum Geologist  
Jackson, Miss. 601-354-1134

**H. LEROY FULGHUM**

Consulting Geologist 601-956-6346  
257 Valley Vista Drive  
Jackson, Mississippi 39211

**JAMES B. FURRH, JR.**

Oil Producer  
1236 Capital Towers Jackson, Mississippi

**GEOPHYSICAL DATABANKS, INC.**

1234 Loyola Bldg. Room 303  
New Orleans, La. 70112 504-581-4724

Grady Loftin Jim Malone  
CDP data available in the following area:  
Gulf Coast Appalachians Rockies  
Agents for Petroconsultants, S.A.

**GEOPHYSICAL FIELD SURVEYS, INC.**

Seismic Exploration  
Room 201 Jackson, MS  
975 North Street  
P. O. Box 12304, Colonial Station 601-948-1580

**GERMANY INVESTMENT CO.**

Norman G. Germany E. Wilson Germany  
Dallas, Texas Natchez, Mississippi

**GUARDIAN OIL COMPANY**

L. Graham Hughes Charles S. McClelland  
1636 Capital Towers Jackson, Mississippi

**CLAYTON W. WILLIAMS, JR.**

1536 Capital Towers 601-353-1644  
Jackson, Miss. 39201

## JURASSIC CROSS SECTION PUBLISHED

The Mississippi Geological Survey announces the publication of a geological cross section entitled, "Southeast-Northwest Cross Section of the Jurassic Sediments, Clarke County to Scott County, Miss."

This cross section is printed in nine colors and is produced on a horizontal scale of one inch equal to one mile. Dimensions of the printed section are twenty-nine inches by fifty-six inches.

As a part of the program to relieve the energy shortage, the Mississippi Geological Survey is attempting to illustrate the potential for undiscovered oil and gas reserves believed to be present in stratigraphic traps and point out the importance of lithologic facies changes in this cross section.

The cross section sells for \$6.00, plus 75 cents postage and handling charges and can be ordered from the: Mississippi Geological Survey, P. O. Box 4915, Jackson, MS 39216.

### MISSISSIPPI GEOLOGICAL SURVEY PUBLISHES GEOLOGIC MAP OF MENDENHALL WEST QUADRANGLE

The Mississippi Geological Survey announces the publication of the first in a series of 7.5 minute geologic quadrangle maps. Map GQ 82-NW, entitled "Geologic Map of the Mendenhall West Quadrangle, Mississippi," by James H. May, concerns an area south and west of Mendenhall in Simpson County. An accompanying report contains 53 pages, 8 figures, and 5 tables.

Map GQ 82-NW details the geology of the quadrangle and data on elevations, location of streams, lakes, highways, railroads, and buildings. Additional information on the map includes three cross sections in color and a structural contour map using the top of the Glendon Limestone as datum. The scale of the map is 1:24,000.

The accompanying report summarizes the geology of the quadrangle, locates and evaluates known mineral resources, gives detailed bore hole descriptions, tabulates test results, and discusses the development of potentially valuable resources. Also in the report is a section on ground-water and surface-water resources by John C. Marble.

Map GQ 82-NW may be purchased from the Mississippi Geological Survey at 2525 North West Street for \$2.00 per copy. Mail orders will be accepted when accompanied by payment and mailing and handling charges (30 cents for the first copy, plus 10 cents for each additional copy). Address orders to: Mississippi Geological Survey, P. O. Box 4915, Jackson, MS 39216

### MISSISSIPPI GEOLOGICAL SURVEY PUBLISHES ENVIRONMENTAL GEOLOGY OF ADAMS COUNTY

The Mississippi Geological Survey announces the publication of "Geology and Man in Adams County, Mississippi," the fourth in a series of environmental geology studies. This publication, authored by Sarah C. Childress, Michael Bograd, and John C. Marble, is an atlas-type book designed to give the public information concerning the geological aspects of the area in which they live. Geography and Physiography, Geology, Geologic Hazards, Waste Disposal, Water Resources, Transportation and Recreation, Present Land Use, Historic and Aesthetic Factors are discussed. There are 188 pages, 11 maps in color, 11 charts and diagrams, 14 tables, 8 color plates, and 97 photographs in the book.

The purpose of this publication is to point out how geology relates to the needs of the people of a particular area, and how the science of geology can aid in planning and development. This book should prove useful to persons in engineering, in land-use planning, waste disposal construction, environmental protection, ground-water development, geology, and civil engineering. It should also be of significant interest to the general public.

Environmental Geology Series No. 4 may be purchased from the Mississippi Geological Survey at 2525 North West Street for \$5.00 per copy. Mail orders will be accepted when accompanied by payment (\$5.00 plus \$1.00 postage and handling each copy). Address orders to: Mississippi Geological Survey, P. O. Box 4915, Jackson, MS 39216.

NOTE: Environmental Series No. 3 has been postponed.

MISSISSIPPI GEOLOGICAL SOCIETY  
P. O. BOX 422  
JACKSON, MS 39205

# NEWS

## BULLETIN

mississippi geological society

VOL. XXIV, No. 3, Nov., 1976



### BLACK WARRIOR FIELDS: NOV. 16 TOPIC

#### SPOONER WILL DISCUSS FOURMILE AND SPLUNGE FIELDS

Harry Spooner, Jr., will be the speaker at the M. G. S. meeting on November 16, 1976, at Primos Northgate. The topic will be two Chester gas fields in North Mississippi, namely Fourmile Creek and Splunge, which contain reserves totaling about 52 billion cubic feet of dry gas.

Harry, a native of Stephens, Arkansas, received his B.S. and M.S. from Oklahoma University. Following stints with Chevron and Colorado Oil & Gas, he operated independently for eight years. Then, from 1971 to 1976, he was with Pruet & Hughes. Early this year he again went independent. Harry holds memberships in A.A.P.G. and the Shreveport and Jackson Geological Societies.

Be sure to call T.C. Rader, 948-4128, no later than noon, Monday, November 15, for reservations.

#### M. G. S. HOSTS CONTINUING EDUCATION PROGRAM

Clyde Moore, Jr., Associate Professor of Geology at L.S.U. will conduct a three hour lecture for the Mississippi Geological Society as part of the AAPG's continuing education series. Dr. Moore's lecture will be given from 6:30 to 10:00 P.M. on November 11, 1976, in the Smackover Room of the Jackson Petroleum Club. The title of Dr. Moore's lecture is "Constraints of the use of depositional models in the exploration of carbonate sequences". The fee for the course is \$5.00 (\$1.00 for students). NO dinner will be served prior to the lecture.

Dr. Moore is a native of Jacksonville, Florida. He received his B.S. degree in Geology, in 1955, from Louisiana State University. His graduate work was done at the University of Texas, Austin, receiving his Ph.D. degree in 1961.

Following graduation Mr. Moore's first professional employment was as a research geologist with Shell Development Company in Houston. For the next 4 1/2 years his work carried him to central and west Texas, up and down the Atlantic Coast, and to California.

In 1966, he became an Assistant Professor of Geology at L.S.U. in Baton Rouge, and was advanced to Associate Professor in 1968.

Dr. Moore has led a full academic life, being a graduate advisor, Director of the Graduate Summer Field Conference, and is a coordinator of field studies at Grand Cayman and Jamaica. He is also a recipient of several research grants in the last eight years. He is a member of A.A.P.G., S.E.P.M. and Sigma Xi and has given many papers at various universities and professional societies throughout the United States.

#### CALENDAR

Nov. 9	AUXILIARY COVERD DISH LUNCHEON - Riverside Park
Nov. 11	M.G.S. CONTINUING EDUCATION SEMINAR - 6:30 P.M., Petroleum Club
Nov. 15	J.G.S. EVENING MEETING Primos Northgate
Nov. 16	M.G.S. EVENING MEETING Primos Northgate

## MISSISSIPPI GEOLOGICAL SOCIETY

### OFFICERS

David Cate	President	First Miss. Corp.
Sarah Childress	1st Vice Pres.	Enserch
Lester Aultman	2nd Vice Pres.	Pruet & Hughes
Ed Luper	Secretary	Miss. Geol. Survey
Ray Lewand	Treasurer	Forest Oil
Jerry Zoble	Past President	Consultant

### DELEGATES

Phillip Reeves	A.A.P.G.	Pruet & Hughes
Alan Jackson	A.A.P.G.	Consultant
Kevin Cahill	G.C.A.G.S.	First Miss. Corp.

### COMMITTEES AND CHAIRMEN

AAPG Membership	Phillip Reeves and Alan Jackson
Continuing Education	Don Turner
Entertainment	T. C. Rader and Doug Harper
Golf	Verne Culbertson and Buddy Twiner
Job Placement	Larry Boland
Program	Joe Fritz
Projection	Bill Irwin
Publicity	

### NEWS BULLETIN STAFF

Editor	Bill McGee
Advertising Mgr.	Paul Day
Petroleum Auxiliary	Annette Jeffreys
Geophysics	Ray Phillips
Photography	Dan Herlihy
Progress	Don Beal

### G.C.A.G.S. BEST PAPER AWARDS

The Awards Committee has announced the following winners in the Best Paper Awards for the 1976 G.C.A.G.S. Convention in Shreveport.

**FIRST PLACE and A. T. LEVORSON MEMORIAL AWARD:** Arthur R. Troell and J.D. Robinson: "Combination Entrapment in the Smackover Formation at Chalybeat Springs Field Columbia County, Arkansas"

**SECOND PLACE AWARD:** Clyde H. Moore and Jack W. Becher: "The Walker Creek Field; A Smackover Diagenetic Trap"

**THIRD PLACE AWARD:** J. C. Neal: "South Jennings and Jennings Townsite Fields, Jefferson Parish, Louisiana"

## PRESIDENT'S NOTES

One of the objects of the Mississippi Geological Society as stated in the By-Laws is to stimulate interest in geology and related sciences among the membership. This was one of my goals as President for this year and, accordingly, we have scheduled two short seminars on subjects that should appeal to most members. Both are sponsored by the A.A.P.G. Continuing Education Program and each is only 3 hours long.

The first will be a lecture by Clyde H. Moore on November 11 concerning carbonate exploration. Dr. Moore is well known for his studies of carbonate rocks and will present his lecture in a practical manner which will be helpful to all engaged in petroleum exploration. Details of his paper are printed elsewhere in this Bulletin. The second seminar is scheduled for January and is entitled Land Techniques for Geologists by V. Ross Brown. Details of this lecture will be forthcoming.

These are two diverse subjects that should attract a large number of members. However, recent seminars have not drawn well and have, in fact, been failures from the attendance standpoint. We need 30 to 40 members for these seminars to be successful. The charge is nominal, the evening time convenient, the lectures are short, and the subjects are of value. What more can you ask for? I am asking each member to consider his priorities on the evenings of these lectures and to attend if at all possible.

Dave Cate

## NEW ORLEANS GEOLOGICAL SOCIETY ANNOUNCES '76-'77 OFFICERS

President	Shelby W. Smith
1st Vice President	Daniel E. Hudson
2nd Vice President	Willis W. Tyrrell, Jr.
Secretary	Calvin A. Parker
Treasurer	Joseph G. Meinert
Director	Robert G. Williamson

## FRIENDS OF THE SOCIETY

CORE LABORATORIES	LARCO DRUG. CO.
WYATT CRAFT	LOCATION SPL. SERVICE
JACK DANIEL	MAGCOBAR-DRESSER
DRESSER-ATLAS	OIL WELL LOGGING
ENGINEERING SERVICE	PEPPARD-SOUDERS AND
FLA. GAS EXPLN. CO.	ASSOCIATED
FORREST OIL CO.	PRUET & HUGHES CO.
XAVIER M. FRASCOGNA	RIDGWAYS
GEOL. CONSULTING SERV.	SCHLUMBERGER
HALLIBURTON	TOBIN MAP
JUSTISS-MEARS OIL CO.	JAMES M. WHITE
HILTON LADNER	CLAYTON W. WILLIAMS



**FOURMILE CREEK AND SPLUNGE FIELDS  
BLACK WARRIOR BASIN  
MONROE COUNTY, MISSISSIPPI**

PROGRESS-SEPTEMBER, 1976

Harry Spooner, Jr.

**Mississippi Completions**

	Oil	Gas	Dry
<b>Exploratory</b>			
Eocene	1	0	11
UK	0	0	2
LK	0	1	0
Jurassic	0	1	0
Paleozoic	0	1	1
<b>Development</b>			
Eocene	6	0	15
UK	2	0	2
LK	0	1	0
Jurassic	1	0	1
Paleozoics	0	2	0

**ABSTRACT**

Fourmile Creek and Splunge Fields contain dry gas reserves of about 17 billion cubic feet and 35 billion cubic feet, respectively, in Mississippian Chester Sands at depths above 1800 feet. Both are combination structural-stratigraphic traps. The trap at Fourmile Creek is formed by simple drape of an isolated sand body on a structural nose. Splunge is more complex, having at least four separate sand bodies, two faults and two hundred feet of vertical closure.

The fields lie in the north part of the Black Warrior Basin in an area of gentle south-southwest dip broken by a few, major, regional, down-to-the-basin normal faults. No evidence of Mississippian growth is found on these faults, and production is not related to them. Smaller, more local faults which are downthrown in the opposite direction do help form traps.

The producing sands appear to be marine and possibly fluvial, high energy deposits occurring in a southwestward-thickening wedge of sediments between the Millerella and Bangor limestones.

Discoveries at Splunge and Fourmile Creek Fields resulted from exploratory efforts based on very sketchy subsurface data. The primary target of the play was thick, Devonian, tripolitic chert porosity in a large, combination fault and pinchout trap. No hydrocarbons were found in the Devonian, probably because of late fault movement. Serendipity can not take full credit for the discoveries because the wells were drilled on prospective structural anomalies and the potential of the Mississippian sands was recognized prior to discovery.

**New Field Discoveries**

Unnamed	Inexco Oil Co. No. 1 Rogers Sec. 5-8N-16W Covington Co. Perfs. 14, 135'-147' (Sligo) 1PF 390 MCFG, 12BC, 8BWPD, 16;64", T.P. 500
Maple Branch	Pruet & Hughes Co.- Aquitaine Oil No. 1 Crump Un. 1-6 Sec. 1-6S-18W Monroe Co. Perfs. 4798'-4812' (Carter) 1PF 1350 MCFG, 1.8 BC, 52 BWPD 20/64", T.P. 870
Horseshoe Lake	Edwards & Jones Expln. Co. No. 1 Wingo et al Sec. 20-6N-1W Holmes Co. Perfs. 9278'-9298' (Smkr.) 1PF 1970 MCFG, 145 BOPP 13/64", T.P. 1801
Unnamed	Big Joe Oil Co. No. 1 Robinson-Barksdale Sec. 20-5N-3W Adams Co. Perfs. 6699'-6706' (Minter) 1 PF 105 BOPD 7.5/64", T.P. 350

**MEMORIAL**

**Frank Lee**, a long-time Mississippi geophysicist, died here Thursday, October 14, 1976. He was born in Magnolia, Mississippi. Following naval service in World War II, Frank started his 29-year career in geophysics. He received his B.S. from Millsaps. Frank held memberships in the Mississippi Geological Society, Society of Exploration Geophysicists and Jackson Geophysical Society (a Past President). He was the founder and President of Geophysical Field Surveys.

Bill McGee

**A & N PRODUCING SERVICES, INC.**

709 Standard Life Building P. O. Box 1669  
Jackson, Mississippi 39205

**AMERICA SOUTHWEST CORP.**

Box 936, Jackson, Miss. 354-2513  
Jack Pryor, Jr., Exec. V.P. Charlie Barton, Geol. - Land

**THE ANALYSTS**

Core Analysis - Mud Logging  
Laurel - Ph. 649-3444

Bunk Caldwell Frank Howson

**ATWATER, CARTER, MILLER & HEFFNER**

Consulting Geologists and Engineers  
424 Whitney Bank Building  
New Orleans, Louisiana 70130  
(501) 581-6527

**DAVID K. BROOKS**

660 Milner Building Oil Exploration Jackson, Mississippi  
948-5722

**BROWNING & WELCH  
GEOLOGISTS**

Suite 1411, Standard Life Building  
Jackson, Mississippi 39201

**C & K PETROLEUM, INC.**

1800 Capital Towers 601-948-1111  
Jackson, Mississippi 39201

**CALLON PETROLEUM CO.**

P. O. Box 1287 Natchez, Mississippi 39120

**CAPITOL PRINTING & BLUE PRINT COMPANY**

330 East Rankin Street 353-2751  
Jackson, Miss. 39202

**L. WICK CARY**

Room 932 Consulting Geophysicist Box 50391  
National Bank of Commerce Bldg. New Orleans, La.

**THOMAS H. CLEMENTS**

Consulting Geophysicist  
1738 Capital Towers Phone 601-355-8724  
Jackson, Mississippi 39201

**CORE LABORATORIES, INC.**

Core Analysis and Well Logging  
Laurel New Orleans  
601-425-3394 504-524-6256  
Jackson Mobile  
601-932-1492 205-456-2271

**CRAFT PETROLEUM CO., INC.**

Wyatt E. Craft

Exploration Operations

**LARRY WALTER**

Consulting Geologist 601-969-1260  
1536 Deposit Guaranty Plaza Jackson, Miss. 39201

**CRUDE OIL PURCHASING, INC.**

P. O. Box 22660 Phone 601-948-5853  
Jackson, Mississippi 39205

**DRESSER-ATLAS**

Jackson, Mississippi 948-5591

**ENSERCH EXPLORATION, INC.**

Maurice N. Birdwell  
District Manger  
1530 Capital Towers P. O. Box 219  
Jackson, Mississippi 39205 601-969-0100

**EXCHANGE OIL AND GAS CORPORATION**

1010 Common Street, New Orleans  
504-581-4111

**HERBERT J. FERBER**

Consulting Geophysicist 956-4666  
5456 Hartsdale Drive  
Jackson, Mississippi

**FLORIDA GAS EXPLORATION CO.**

1444 Capital Towers  
Jackson, Mississippi 39201

**WADE FORTENBERY**

Geologist  
P. O. Box 1183 - Natchez, MS Bus. 442-6011  
Office Hwy. 61 South Res. 442-3250

**JOSEPH F. FRITZ**

Petroleum Geologist  
Jackson, Miss. 601-354-1134

**H. LEROY FULGHUM**

Consulting Geologist 601-956-6346  
257 Valley Vista Drive  
Jackson, Mississippi 39211

**JAMES B. FURRH, JR.**

Oil Producer  
1236 Capital Towers Jackson, Mississippi

**GEOPHYSICAL DATABANKS, INC.**

1234 Loyola Bldg. Room 303  
New Orleans, La. 70112 504-581-4724

Grady Loftin Jim Malone  
CDP data available in the following area:  
Gulf Coast Appalachians Rockies  
Agents for Petroconsultants, S.A.

**GEOPHYSICAL FIELD SURVEYS, INC.**

Seismic Exploration  
Room 201 Jackson, MS  
975 North Street  
P. O. Box 12304, Colonial Station 601-948-1580

**GERMANY INVESTMENT CO.**

Norman G. Germany E. Wilson Germany  
Dallas, Texas Natchez, Mississippi



**GUARDIAN OIL COMPANY**

L. Graham Hughes Charles S. McClelland  
1636 Capital Towers Jackson, Mississippi

**CLAYTON W. WILLIAMS, JR.**

1536 Capital Towers 601-353-1644  
Jackson, Miss. 39201

<b>G. W. GULMON &amp; ASSOCIATES</b> Petroleum Geologist Natchez, Mississippi	
H. E. Hansen, Dallas	A. T. Ricci, Jr., Natchez
<b>CLAUDE B. HAMMILL</b> Oil Operator 2306 First Nat'l Bank Bldg. Houston, TX 77002	
<b>W. L. HARPER</b> Geophysical Consultant 115 Sterling Towers Jackson, MS 39202 Phone 601-352-3339	
<b>GEORGE H. ISBELL, JR.</b> Geologist 1240 Capitol Towers Phone: (601) 948-4881	
<b>ALAN JACKSON</b> Consulting Geologist Telephone 601-582-1192 503 Mandalay Drive Hattiesburg, Mississippi 39401	
<b>ROBERT R. JACOBS</b> Petroleum Geologist P. O. Box 16263 Jackson, MS 39206 362-4846	
<b>JUSTISS-MEARS OIL CO., INC.</b> P. O. Drawer "N" Lena, Louisiana 71342 318-992-4000	
<b>H. E. KARGES</b> Consulting Geologist P. O. Box 1635 1812 Capital Towers Jackson, MS 39205 Phone 352-0972	
<b>K. B. KEARY, JR.</b> Petroleum Geologist 362-4895 439 W. Northside Dr. Jackson, MS 39206	
<b>WILBUR H. KNIGHT</b> Consulting Geologist 1017 First Nat'l Bank Bldg. Jackson, Miss. 355-1528	
<b>HILTON L. LADNER</b> Petroleum Geologist 354-3616 903 FNB Building Jackson, Mississippi	
<b>LARCO DRILLING COMPANY, INC.</b> Suite 1700 Jackson, Miss. 39201 Capital Towers Phone 355-1542	
<b>R. E. (Dick) LEE AND ASSOCIATES</b> The Redd Building 4443 I-55 North P. O. Box 5168 Jackson, MS 39216	
<b>LOCATION SAMPLE SERVICE, INC.</b> Well-logging Services Core Analysis Bob Legate P. O. Box 9733, NSS Home Office: 601-932-1410 Jackson, MS 39206 Home: 601-939-0390	
<b>MILLER OIL PURCHASING CO.</b> A Division of Ergon, Inc. P. O. Box 1308 Jackson, Mississippi 39205	
<b>ROBERT WOMACK, JR.</b> Consulting Geologist 1508 Standard Life Bldg. Jackson, MS 39201 Phone 353-4650	

<b>MOON-HINES</b> Robert M. Moon 601-354-3753 E. R. Hines, Jr. 1804 Capital Towers Jackson, Mississippi 39201	
<b>M. D. (DALE) MYERS</b> Certified Petroleum Geologist P. O. Box 10553 601-355-3536 Jackson, MS 39209	
<b>OIL WELL LOGGING, INC.</b> Glenn Clark Harvey Koehne P. O. Box 16039 P. O. Box 318 Jackson, MS Ellisville, MS 354-3642 477-8315	
<b>MARVIN L. OXLEY</b> 134 South Lamar St. 601-969-4149 Jackson, MS 39201 601-956-6446	
<b>MORTON M. PHILLIPS</b> Petroleum Geologist 902 Milner Bldg. Ph. 355-3364 Jackson, MS 39201 Ph. 366-9665	
<b>WILLIAM H. PLAYER &amp; ASSOCIATES</b> P. O. Box 1383 108 Wall St. Natchez, MS	
<b>PRUET &amp; HUGHES COMPANY</b> 1111 Capital Towers Building Jackson, Mississippi 39201	
<b>PAUL ANTHONY RADZEWICZ</b> Oil Producer 1829 Deposit Gty. Bldg. Jackson, MS 39201 969-3950	
<b>RIDGWAYS</b> 103 E. Pearl Street 355-4751 Jackson, Mississippi	
<b>SCHLUMBER WELL SERVICES</b> Jackson, Mississippi Phone 352-8589	
 <b>Seismograph Service Corporation</b> <small>A SUBSIDIARY OF BAYNEON COMPANY</small> <small>P. O. Box 1590 • Tulsa, Okla. 74102 • (918) 627-3330</small> <small>DISTRICT OFFICES AND DATA PROCESSING CENTERS</small> <small>HOUSTON • MIDLAND • DENVER • ALMA, MI</small>	
<b>SOUTHERN NATURAL GAS CO.</b> P. O. Box 1513 Houston, Texas Donald R. Scherer, Dist. Geologist 622-7270	
<b>ROBERT L. THOMSEN</b> 1818 Capital Towers P. O. Box 1847 Jackson, Mississippi	
<b>WOOLF &amp; MAGEE, INC.</b> P. O. Box 3566, Tyler, Texas 75701 J. W. Arnold, Pres. Allen W. Woolf, Vice Pres. W. D. Magee, Jr., Sec.-Treas. A. B. Irion, Drig. Supt. Tyler, TX AC214-562-4051-Natchez, MS AC601-445-4570 Rotary Rigs in Texas, Louisiana, Arkansas, Mississippi and Alabama	
<b>Magcobar DATA Systems.</b> <b>Over 10 million feet</b> <b>of well analysis</b> <b>experience.</b>	
	
<small>Magcobar Division, Dresser Industries, Inc. P.O. Box 6504, Houston, Texas, 77005 713/784-6011</small>	

MISSISSIPPI GEOLOGICAL SOCIETY  
P. O. BOX 422  
JACKSON, MS 39205

# NEWS

## BULLETIN

mississippi geological society

VOL. XXIV, No. 4, Dec., 1976



### DEC. 14 TALK: S. W. ALABAMA FIELDS

#### MIHALSKY WILL DISCUSS CHUNCHULA AND HATTER'S POND

Robert B. Mihalsky will be the speaker at the M. G. S. noon meeting on December 14, 1976, in the Smackover Room of the Capital City Petroleum Club. His subject will be concerned primarily with the Jurassic Chunchula and Hatter's Pond fields, Mobile County, Alabama. Recoverable reserves of these two fields are estimated to be 755 BCFG and 330 MMBC.

A native of Ambridge, Pennsylvania, Bob is with Marion Corporation in Mobile, Alabama. Following graduation with a B. S. from Wichita State University, he was with Amerada for 14 years. His work with Amerada ranged from the Denver Basin through the Williston Basin. Then he worked in the Mafla area with Tenneco for 4 years. He is a member of M. G. S. and AAPG.

With attendances being so strong at this year's meetings, it will be even more worthwhile to call your reservations in to T. C. Rader at 948-4128. Please make them no later than noon, Monday, December 13.

#### JURASSIC FIELDS OF THE MOBILE AREA

Robert B. Mihalsky  
ABSTRACT

Chunchula and Hatter's Pond Fields, Mobile County, Alabama are two of the most significant Jurassic fields found since Jay Field. Hatter's Pond Field produces from both the Smackover formation and the Norphlet formation and the two formations are considered a single reservoir by the operators and Alabama Oil and Gas Board.

The field contains at least 5800 acres, average pay thickness is 136 feet and the field may produce as much as 515,000,000 MCF of gas plus 230,000,000 bbls condensate with pressure maintenance. The field trapping mechanism is 600 feet of structural closure against the downthrown side of a down to the east normal fault. Structural growth is due to Louann Salt movement.

Chunchula Field produces from the Smackover formation. The field contains at least 9600 productive acres, acreage pay thickness is 38 feet and may produce 240,000,000 MCF of gas plus 100,000,000 bbls condensate with pressure maintenance. The trap is a combination of structure and stratigraphy. The structure is a low relief feature with approximately 200 feet structural closure. The field is limited on the east by a loss of porosity due to a facies change in the Chunchula porosity zone from porous dolomite to tight limestone. The field is not defined on the north and west side.

The combination of structure and porosity development in the Smackover formation could hold additional Chunchula-Hatter's Pond fields in the Mobile, Washington and Baldwin Counties, Alabama and southeast Mississippi.

#### CALENDAR

DEC. 14	M.G.S. NOON MEETING 12 Noon Petroleum Club
---------	--

## MISSISSIPPI GEOLOGICAL SOCIETY

### OFFICERS

David Cate	President	First Miss. Corp.
Sarah Childress	1st Vice Pres.	Enserch
Lester Aultman	2nd Vice Pres.	Pruet & Hughes
Ed Luper	Secretary	Miss. Geol. Survey
Ray Lewand	Treasurer	Forest Oil
Jerry Zoble	Past President	Consultant

### DELEGATES

Phillip Reeves	A.A.P.G.	Pruet & Hughes
Alan Jackson	A.A.P.G.	Consultant
Kevin Cahill	G.C.A.G.S.	First Miss. Corp.

### COMMITTEES AND CHAIRMEN

AAPG Membership	Phillip Reeves and Alan Jackson
AAPG Public Information	Gene Taylor
Continuing Education	Don Turner
Entertainment	T. C. Rader and Doug Harper
Golf	Verne Culbertson and Buddy Twiner
Job Placement	Larry Boland
Program	Joe Fritz
Projection	Bill Irwin
Publicity	Sara Childress
Field Trip	Jim May
Nomenclature	Jim Bollman

### NEWS BULLETIN STAFF

Editor	Bill McGee
Advertising Mgr.	Paul Day
Petroleum Auxiliary	Annette Jeffreys
Geophysics	Ray Phillips
Photography	Dan Herlihy
Progress	Don Beal

### SCHEDULED FUTURE CONVENTIONS OF A.A.P.G. - S.E.P.M.

1977 - June 12-16	Washington, D.C. Sheraton-Park and Shoreham Americana Hotels- Co-Headquarters
1978 - April 9-12	Oklahoma City, Oklahoma. Myriad-Convention. Headquarters: Skirvin Plaza-Headquarters Hotel.
1979 - April 1-4	Houston, Texas. Albert Thomas Convention Center-Convention Headquarters; Hyatt Regency- Headquarters Hotel.
1980 - June 8-11	Denver, Colorado. Currigan Exhibition Hall Convention Headquarters; Denver Hilton- Headquarters Hotel.

## PRESIDENT'S NOTES

Attendance at Society meetings has been most encouraging so far this year. We were concerned about the possible lack of attendance at the carbonate seminar held November 11th, but our fears were groundless as 52 turned out to hear Clyde Moore present an excellent lecture. The quality of this talk was evidenced by the questions that followed the talk.

Both the October and November regular meetings had maximum attendance. We were particularly pleased with the turnout at the November evening meeting. Sixty-seven members and guests were present and this was the largest number for an evening gathering in the last five years. Part of this increased attendance is undoubtedly due to interesting and informative subject matter organized by the committee chairmen but we would like to think it is also due to increased interest in the Society and its well being. We hope this interest will continue throughout the year and it should because we have events scheduled that will appeal to all.

The privilege of using electrical logs on a take-out basis for reproduction and use has been reinstated by the Oil and Gas Board. This privilege had been revoked because it had been abused by some individuals who either didn't return logs or kept them an undue length of time. This is a valuable service for all working geologists and care should be taken for the good of all to see that it is not abused again.

This year has been a good one for petroleum exploration in Mississippi and the good times should continue through 1977. Both the profession of geology and the Mississippi Geological Society are strong in Mississippi and will continue to be so with your support and interest. On behalf of the Board of Directors, I wish you a most enjoyable and happy holiday season.

Dave Cate

### FRIENDS OF THE SOCIETY

CORE LABORATORIES	LARCO DRUG CO.
WYATT CRAFT	LOCATION SPL. SERVICE
JACK DANIEL	MAGCOBAR-DRESSER
DRESSER-ATLAS	OIL WELL LOGGING
ENGINEERING SERVICE	PEPPARD-SOUDERS AND ASSOCIATED
FLA. GAS EXPLN. CO.	PRUET & HUGHES CO.
FORREST OIL CO.	RIDGWAYS
XAVIER M. FRASCOGNA	SCHLUMBERGER
GEOL. CONSULTING SERV.	TOBIN MAP
HALLIBURTON	JAMES M. WHITE
JUSTISS-MEARS OIL CO.	CLAYTON W. WILLIAMS
HILTON LADNER	

## THE FPC'S NEW NATURAL GAS RATES: RIP—OFF OR REALISM?

With an intensity usually reserved for chastising private industry, the self-styled guardians of the consumer interest have attacked the Federal Power Commission with shrill cries of "rip-off!" How did the FPC earn these brickbats? By daring to raise the regulated wellhead price of natural gas. By daring to admit that it has been keeping the price of interstate natural gas too low—so low that producers have had no incentive to explore for and develop needed new supplies, and consumers have had no incentive to conserve this precious fuel. And by daring, finally, to stick to its guns.

Contrary to claims that the Federal Power Commission has "tripled the price of natural gas," the recent Commission Opinion No. 770 raising ceiling rates for new natural gas will have only a limited economic impact upon the consumer. In fact, the vast bulk of natural gas moving to the American consumer remains unaffected. As written, the rate order has no effect on natural gas dedicated to interstate commerce and produced from wells drilled prior to January 1, 1973. This gas, known as "old" gas or "flowing" gas, accounts for about 90 percent of the total gas moving in interstate commerce. It does not increase the rates at which natural gas is sold for consumption within the state of production. These intrastate sales, which account for roughly 40 percent of the gas consumed in the United States, are not subject to Opinion No. 770. Thus, the FPC rate order leaves untouched all of the intrastate gas sales and almost 90 percent of the interstate sales. It raises the rates applicable to only 6 to 7 percent of the natural gas presently being consumed in the United States.

According to the FPC and virtually all disinterested energy experts, the new rates are needed to make higher cost drilling possible at greater depths and in frontier areas, and to permit the exploration and development which must occur if new supplies of natural gas are to be brought to the American consumer. The higher rates permitted for a small fraction of the natural gas consumed in this country were set by the FPC on the basis of its estimates of the costs of exploration and production, not on OPEC oil prices.

On the basis of cost evidence and cost estimates, the FPC raised the ceiling rate for two categories of natural gas. One for gas first dedicated to interstate commerce between January 1, 1973 and December 31, 1974, and for gas produced from wells commenced during that two-year period, the Commission raised the rate from 52 cents per Mcf to \$1.01 per Mcf. The other, for gas first dedicated to interstate commerce after December 31, 1974, or produced from wells commenced after that date, the FPC authorized a ceiling price of \$1.42 per Mcf.

These increases, while substantial, may not be sufficient to cover the true costs of incremental supplies of new natural gas. Certainly the record before the FPC contained convincing evidence—some of it coming from the Commission's own staff—that the \$1.42 rate is inadequate. That is, of course, and issue which will be resolved before the Commission on rehearing, or in the courts on judicial review of Opinion No. 770.

If it is assumed that Opinion No. 770 will stand, what then will be the impact on the American consumer? The FPC has gone to great lengths to consider and quantify the cost impact of its rate order. The Commission has noted that the \$1.01 rate will apply to about 850 Bcf (Billion cubic feet) per year (on the basis of flows in the interstate market on April 1, 1976); that the \$1.42 rate will apply to about 750 Bcf per year of gas presently flowing and an estimated additional 600 Bcf by the end of 1977.

Result: The higher rates will add only \$1.30 per month to the average residential monthly gas bill.

In considering the impact of the limited rate increases, it is also important to realize that of the 49 cents per Mcf increase allowed for the 1973-1974 vintage of natural gas, 35 cents goes for the United States government in the form of direct taxes; of the 90 cent increase permitted for post-January 1, 1975 natural gas, 44 cents goes to the United States government in direct taxes, and an additional 17 cents goes to the royalty owner and not to the producer.

### PROGRESS-OCTOBER, 1976

#### Mississippi Completions

	Oil	Gas	Dry
<b>Exploratory</b>			
Eocene	0	0	14
UK	0	0	1
LK	0	0	0
Jurassic	1	0	2
Paleozoic	0	0	0
<b>Development</b>			
Eocene	5	0	7
UK	0	0	1
LK	1	0	1
Jurassic	0	0	0
Paleozoic	0	0	0

#### New Field Discoveries

Unnamed	Pruet and Hughes Co.- Aquitaine Oil Corp. No. 1 Jones Un. 32-2 Sec. 32-2N-15E, Jones Co. Perfs. 12979-986 (Smkr.) 1 PF 218 BOPD, 20/64", T.P. 140
---------	--

**A & N PRODUCING SERVICES, INC.**

709 Standard Life Building P. O. Box 1669  
 Jackson, Mississippi 39205

**AMERICA SOUTHWEST CORP.**

Box 936, Jackson, Miss. 354-2513  
 Jack Pryor, Jr., Exec. V.P. Charlie Barton, Geol. - Land

**THE ANALYSTS**

Core Analysis - Mud Logging  
 Laurel - Ph. 649-3444

Bunk Caldwell Frank Howson

**ATWATER, CARTER, MILLER & HEFFNER**

Consulting Geologists and Engineers  
 424 Whitney Bank Building  
 New Orleans, Louisiana 70130  
 (501) 581-6527

**DAVID K. BROOKS**

660 Milner Building Oil Exploration Jackson, Mississippi  
 948-5722

**BROWNING & WELCH  
GEOLOGISTS**

Suite 1411, Standard Life Building  
 Jackson, Mississippi 39201

**C & K PETROLEUM, INC.**

1800 Capital Towers 601-948-1111  
 Jackson, Mississippi 39201

**CALLON PETROLEUM CO.**

P. O. Box 1287 Natchez, Mississippi 39120

**CAPITOL PRINTING & BLUE PRINT COMPANY**

330 East Rankin Street 353-2751  
 Jackson, Miss. 39202

**L. WICK CARY**

Room 932 Consulting Geophysicist Box 50391  
 National Bank of Commerce Bldg. New Orleans, La.

**THOMAS H. CLEMENTS**

Consulting Geophysicist  
 1738 Capital Towers Phone 601-355-8724  
 Jackson, Mississippi 39201

**CORE LABORATORIES, INC.**

Core Analysis and Well Logging

Laurel New Orleans  
 601-425-3394 504-524-6256  
 Jackson Mobile  
 601-932-1492 205-456-2271

**CRAFT PETROLEUM CO., INC.**

Wyatt E. Craft

Exploration Operations

**LARRY WALTER**

Consulting Geologist 601-969-1260  
 1536 Deposit Guaranty Plaza Jackson, Miss. 39201

**CRUDE OIL PURCHASING, INC.**

P. O. Box 22660 Phone 601-948-5853  
 Jackson, Mississippi 39205

**DRESSER-ATLAS**

Jackson, Mississippi 948-5591

**ENSERCH EXPLORATION, INC.**

Maurice N. Birdwell  
 District Manger  
 1530 Capital Towers P. O. Box 219  
 Jackson, Mississippi 39205 601-969-0100

**EXCHANGE OIL AND GAS CORPORATION**

1010 Common Street, New Orleans  
 504-581-4111

**HERBERT J. FERBER**

Consulting Geophysicist  
 5456 Hartsdale Drive 956-4666  
 Jackson, Mississippi

**FLORIDA GAS EXPLORATION CO.**

1444 Capital Towers  
 Jackson, Mississippi 39201

**WADE FORTENBERY**

Geologist  
 P. O. Box 1183 - Natchez, MS Bus. 442-6011  
 Office Hwy. 61 South Res. 442-3250

**JOSEPH F. FRITZ**

Petroleum Geologist  
 Jackson, Miss. 601-354-1134

**H. LEROY FULGHUM**

Consulting Geologist  
 257 Valley Vista Drive 601-956-6346  
 Jackson, Mississippi 39211

**JAMES B. FURRH, JR.**

Oil Producer  
 1236 Capital Towers Jackson, Mississippi

**GEOPHYSICAL DATABANKS, INC.**

1234 Loyola Bldg. Room 303  
 New Orleans, La. 70112 504-581-4724  
 Grady Loftin Jim Malone  
 CDP data available in the following area:  
 Gulf Coast Appalachians Rockies  
 Agents for Petroconsultants, S.A.

**GEOPHYSICAL FIELD SURVEYS, INC.**

Seismic Exploration  
 Room 201 Jackson, MS  
 975 North Street  
 P. O. Box 12304, Colonial Station 601-948-1580

**GERMANY INVESTMENT CO.**

Norman G. Germany E. Wilson Germany  
 Dallas, Texas Natchez, Mississippi

**GUARDIAN OIL COMPANY**

L. Graham Hughes Charles S. McClelland  
 1636 Capital Towers Jackson, Mississippi

**CLAYTON W. WILLIAMS, JR.**

1536 Capital Towers 601-353-1644  
 Jackson, Miss. 39201



**G. W. GULMON & ASSOCIATES**  
 Petroleum Geologist  
 Natchez, Mississippi  
 H. E. Hansen, Dallas      A. T. Ricci, Jr., Natchez

**CLAUDE B. HAMMILL**  
 Oil Operator  
 2306 First Nat'l Bank Bldg.      Houston, TX 77002

**W. L. HARPER**  
 Geophysical Consultant  
 115 Sterling Towers      Jackson, MS 39202  
 Phone 601-352-3339

**GEORGE H. ISBELL, JR.**  
 Geologist  
 1240 Capitol Towers      Phone: (601) 948-4881

**ALAN JACKSON**  
 Consulting Geologist      Telephone 601-582-1192  
 503 Mandalay Drive      Hattiesburg, Mississippi 39401

**ROBERT R. JACOBS**  
 Petroleum Geologist  
 P. O. Box 16263      Jackson, MS 39206  
 362-4846

**JUSTISS-MEARS OIL CO., INC.**  
 P. O. Drawer "N"      Lena, Louisiana 71342  
 318-992-4000

**H. E. KARGES**  
 Consulting Geologist  
 1812 Capital Towers      P. O. Box 1635  
 Phone 352-0972      Jackson, MS 39205

**K. B. KEARY, JR.**  
 Petroleum Geologist  
 439 W. Northside Dr.      Jackson, MS 39206      362-4895

**WILBUR H. KNIGHT**  
 Consulting Geologist  
 1017 First Nat'l Bank Bldg.      Jackson, Miss. 355-1528

**HILTON L. LADNER**  
 Petroleum Geologist  
 903 FNB Building      Jackson, Mississippi      354-3616

**LARCO DRILLING COMPANY, INC.**  
 Suite 1700      Jackson, Miss. 39201  
 Capital Towers      Phone 355-1542

**R. E. (Dick) LEE AND ASSOCIATES**  
 The Redd Building      4443 I-55 North  
 P. O. Box 5168      Jackson, MS 39216

**LOCATION SAMPLE SERVICE, INC.**  
 Well-logging Services      Core Analysis  
 Bob Legate  
 P. O. Box 9733, NSS      Home Office: 601-932-1410  
 Jackson, MS 39206      Home: 601-939-0390

**MILLER OIL PURCHASING CO.**  
 A Division of Ergon, Inc.  
 P. O. Box 1308      Jackson, Mississippi 39205

**ROBERT WOMACK, JR.**  
 Consulting Geologist  
 1508 Standard Life Bldg.      Jackson, MS 39201  
 Phone 353-4650

**MOON-HINES**  
 Robert M. Moon      601-354-3753      E. R. Hines, Jr.  
 1804 Capital Towers      Jackson, Mississippi 39201

**M. D. (DALE) MYERS**  
 Certified Petroleum Geologist  
 P. O. Box 10553      601-355-3536      Jackson, MS 39209

**OIL WELL LOGGING, INC.**  
 Glenn Clark      Harvey Koehne  
 P. O. Box 16039      P. O. Box 318  
 Jackson, MS      Ellisville, MS  
 354-3642      477-8315

**MARVIN L. OXLEY**  
 134 South Lamar St.      601-969-4149  
 Jackson, MS 39201      601-956-6446

**MORTON M. PHILLIPS**  
 Petroleum Geologist  
 902 Milner Bldg.      Ph. 355-3364      Jackson, MS 39201  
 Ph. 366-9665


**WILLIAM H. PLAYER & ASSOCIATES**  
 P. O. Box 1383  
 108 Wall St.      Natchez, MS

**PRUET & HUGHES COMPANY**  
 1111 Capital Towers Building  
 Jackson, Mississippi 39201

**PAUL ANTHONY RADZEWICZ**  
 Oil Producer  
 1829 Deposit Gty. Bldg.      Jackson, MS 39201  
 969-3950

**RIDGWAYS**  
 103 E. Pearl Street      355-4751  
 Jackson, Mississippi

**SCHLUMBER WELL SERVICES**  
 Jackson, Mississippi      Phone 352-8589

 **Seismograph Service Corporation**  
 A SUBSIDIARY OF BAYNEON COMPANY  
 P. O. Box 1590 • Tulsa, Okla. 74102 • (918) 627-3330  
 DISTRICT OFFICES AND DATA PROCESSING CENTERS  
 HOUSTON • MIDLAND • DENVER • ALMA, MI

**SOUTHERN NATURAL GAS CO.**  
 P. O. Box 1513      Houston, Texas  
 Donald R. Scherer, Dist. Geologist      622-7270

**ROBERT L. THOMSEN**  
 1818 Capital Towers      P. O. Box 1847  
 Jackson, Mississippi

**WOOLF & MAGEE, INC.**  
 P. O. Box 3566, Tyler, Texas 75701  
 J. W. Arnold, Pres.      Allen W. Woolf, Vice Pres.  
 W. D. Magee, Jr., Sec.-Treas.      A. B. Irion, Drig. Supt.  
 Tyler, TX AC214-562-4051-Natchez, MS AC601-445-4570  
 Rotary Rigs in Texas, Louisiana, Arkansas,  
 Mississippi and Alabama

**Magcohar DATA Systems.**  
 Over 10 million feet  
 of well analysis  
 experience.



Magcohar Division, Dresser Industries, Inc.  
 P.O. Box 6504, Houston, Texas, 77005 713/784-6011

MISSISSIPPI GEOLOGICAL SOCIETY  
P. O. BOX 422  
JACKSON, MS 39205

# NEWS

## BULLETIN

mississippi geological society

VOL. XXIV, No. 6, Feb. 1977



### FEBRUARY 8 TOPIC: PETAL SALT DOME

#### URANIUM GEOLOGY AND EXPLORATION SHORT COURSE AT COLO. MINES

A three-day short course in uranium geology and exploration is to be offered March 30 - April 1, 1977, by Dr. Richard H. De Voto of the Colorado School of Mines. The course covers: a) The geochemistry and geology of uranium, b) The mechanisms important in the generation of anomolous uranium concentrations, c) The many geologic environments favorable for the formation of economic and subeconomic uranium deposits, and d) Exploration techniques and programs. Registration fee: \$300. For information regarding the course, contact the office of Continuing Education, Colorado School of Mines, Golden, Colorado 80401; Phone (303) 279-0300 extension 321. Brochures describing the course in more detail are available from Bill McGee.

#### JACKSON TO SPEAK ON LPG STORAGE IN PETAL SALT DOME

**Alan Jackson**, independent geologist in Hattiesburg, Mississippi, will talk to the Mississippi Geological Society at the noon meeting, February 8, 1977. His subject will be the geology of and utilization of the Petal Salt Dome. The dome is currently used for LPG storage. A synopsis of his talk will be found elsewhere in this issue.

Alan, consulting geologist from Hattiesburg, is a native of the Ozarks of North Arkansas, a graduate of Louisiana State University with B.S. and M.S. degrees in geology. He worked for Humble Oil Co. (now Exxon) in California and in South Louisiana prior to coming to Mississippi in 1958. He left Humble in 1969 to become an independent and has been doing consulting work in Mississippi and Alabama since then. He is a member of the A.A.P.G., A.P.G.S., and M.G.S. He was president of the M.G.S. in 1966-67, and presently is one of the two M.G.S. delegates to the A.A.P.G.

#### CALENDAR

- |         |  |
|---------|--|
| FEB. 8  | M.G.S. Noon Meeting C.C. Petroleum Club. |
| FEB. 21 | J.G.S. Evening Meeting Primos Northgate  |

#### T.C. NEEDS INFO!

Because of the excellent turnouts of recent months (both noon and evening), it is even more important than ever that you get your reservations in to T.C. ahead of time. Also, T.C. suggests that, as the Feb. meeting is a noon meeting, you start through the Pet. Club line at 11:45 A.M. PLEASE call T.C. Rader for reservations on or before Monday, February 7, phone 948-4128.

## MISSISSIPPI GEOLOGICAL SOCIETY

### OFFICERS

David Cate	President	First Miss. Corp.
Sarah Childress	1st Vice Pres.	Enserch
Lester Aultman	2nd Vice Pres.	Pruet & Hughes
Ed Luper	Secretary	Miss. Geol. Survey
Ray Lewand	Treasurer	Forest Oil
Jerry Zoble	Past President	Consultant

### DELEGATES

Phillip Reeves	A.A.P.G.	Pruet & Hughes
Alan Jackson	A.A.P.G.	Consultant
Kevin Cahill	G.C.A.G.S.	First Miss. Corp.

### COMMITTEES AND CHAIRMEN

AAPG Membership	Phillip Reeves and Alan Jackson
Continuing Education	Don Turner
Entertainment	T. C. Rader and Doug Harper
Golf	Verne Culbertson and Buddy Twiner
Job Placement Program	Larry Boland
Projection	Joe Fritz
Publicity	Bill Irwin
<b>NEWS BULLETIN STAFF</b>	
Editor	Bill McGee
Advertising Mgr.	Paul Day
Petroleum Auxiliary	Annette Jeffreys
Geophysics	Ray Phillips
Photography	Dan Herlihy
Progress	Don Beal

## FRIENDS OF THE SOCIETY

CORE LABORATORIES	LARCO DRILG. CO.
WYATT CRAFT	LOCATION SPL. SERVICE
JACK DANIEL	MAGCOBAR-DRESSER
DRESSER-ATLAS	OIL WELL LOGGING
ENGINEERING SERVICE	PEPPARD-SOUDERS AND
FLA. GAS EXPLN. CO.	ASSOCIATED
FORREST OIL CO.	PRUET & HUGHES CO.
XAVIER M. FRASCOGNA	RIDGWAYS
GEOL. CONSULTING SERV.	SCHLUMBERGER
HALLIBURTON	TOBIN MAP
JUSTISS-MEARS OIL CO.	JAMES M. WHITE
HILTON LADNER	CLAYTON W. WILLIAMS

## PRESIDENT'S NOTES

It is with considerable satisfaction that I note the current high demand for geologists by energy companies. This demand is primarily due to three factors: 1) the accelerated search for oil and gas reserves, 2) an influx of newer or expanding companies onto the exploration scene, and, 3) the realization that geologists are the keys in unlocking new exploratory plays.

Along with this high demand has been a dramatic increase in salaries and other benefits, both by the majors and smaller companies. If you doubt this, try hiring a good geologist with the qualifications you want. This is the way it should be. If energy shortages are to be battled successfully, the geologist must lead the way and he or she should be compensated to the fullest. In fact, more and more smaller companies are uttering the magic word "participation" to prospective employees. The four little letters "ORRI" and your name on a division order works wonders for incentive. However, it has always been my contention that a good petroleum geologist does not work for money alone. He also works for professional satisfaction and the desire to accomplish his ultimate goal, i.e., drill a well. The proper and appropriate blend obviously is to offer a geologist these opportunities along with full and adequate compensation. More and more, this is being done.

Yes, times are good and those of you who have suffered through the lean, dark years when geologists were being terminated in wholesale quantities must feel some degree of satisfaction, if not for yourself, then for your profession. No longer can the old and not-so-funny analogy of the mushroom and geologist be drawn, i.e., both are kept in the dark, fed a lot of bleep and then canned. Yes, times are good, and I believe they will continue out of absolute necessity.

—David Cate

## WORTH REPEATING

Shortly after the great expansion of FEA, an official of that worthy organization called Bill Johnson, then on Secretary Simon's staff, and said: "You know, we're working on a system of weights and measures over here and we'd like some help." "Sure," said Bill, "what can I do for you?" "Well," said the FEA official, "We've figured out what API gravity means, but what exactly is the weight of a plattsoilgram?" Bill told them what a Platts Oilgram was. But he missed his chance. He should have said, "Exactly .6273 ounces." Just think of the mess it could have caused if that number had been cranked into FEA's computers." —James Akins at IPAA Annual Meeting, Oct. 26, 1976.

**Mississippi Completions**

Exploratory	Oil	Gas	Dry
Eocene	0	0	8
UK	0	0	3
LK	0	1	3
Jurassic	0	0	3
Paleozoic	0	0	0

Development	Oil	Gas	Dry
Eocene	9	1	12
UK	1	1	4
LK	2	2	0
Jurassic	1	0	1
Paleozoic	0	2	0

**New Field Discoveries**

Unnamed

Greens Creek      Harkins, First Miss.,  
 Amerado Hess, and  
 St. Joe Pet.  
 No. 1 B.S. Unit 16-8  
 Section 16-5N-19W  
 Jeff. Davis Co.  
 Perfs. 16620'-656' (Hoss.)  
 IP 3750 MCFGPD, 24BCPD  
 16/64", TP 2650#  
 Perfs 15872'-894'  
 IP 5000 MCFGPD, 48BCPD  
 14/64", TP 4850#

Since 1969, the independent segment of the petroleum industry has drilled about nine out of every ten New Field Wildcat wells in the United States. Significant exploratory successes during this same period were about two percent, or about one out of every 50 wells drilled.

Independents made 75 percent of the New Field Wildcat discoveries; however, to obtain a complete picture of exploration during this time period, the results must be measured in the light of reserve additions. Their 75 percent discovery rate of New Field Wildcats yielded slightly more than one-half of the oil and gas reserves. This does not include all of the large reserves found by majors at Prudhoe Bay. Most of the majors' exploration occurred in the high-cost and high-risk environments of offshore Arctic and ultra-deep inland drilling where the average discovery size has been substantially larger.

It is clear that both independents' and majors' efforts are vital in oil and gas exploration. Each segment contributes approximately equal shares of reserves discovered while exploring in somewhat different environments of risk and costs. Thus, legislative discrimination against either segment will ultimately harm the entire industry and the consumer. To begin to meet national goals of greater self-sufficiency requires maximizing oil and gas exploration and discoveries. This can best be accomplished by the petroleum industry (which is both independents and majors) as a whole, and not by individual segments.

**PETAL SALT DOME**

by Alan Jackson

The Petal Salt Dome is located in Forrest County, Mississippi, just north of the town of Petal. It is a large, piercement-type, dome penetrating to within 1600 feet of the surface. All geologic formations below the Cockfield (Claiborne group - Upper Eocene) have been penetrated by the salt flow. In addition, an anhydrite caprock has formed on the top of the salt with a maximum thickness in excess of 400 feet. Additional anhydrite has been encountered on the side of the dome opposite the Upper Wilcox sands beneath the overhanging north edge.

There are at present 17 storage caverns in use on the Petal Dome, with one being leached and two more permitted for early drilling. The caverns vary in capacity from 250,000 barrels up to almost 2,000,000 (80 million gallons) and comprise the largest L.P.G. storage area in the state, serving Mississippi, Alabama, Florida, Georgia and other southeastern states as a distribution center. Also, the Petal Dome is under consideration for a portion of the Federal Energy Administration Strategic Petroleum Reserve plan for crude storage.

**A & N PRODUCING SERVICES, INC.**

709 Standard Life Building P. O. Box 1669

Jackson, Mississippi 39205

**AMERICA SOUTHWEST CORP.**

Box 936, Jackson, Miss. 354-2513

Jack Pryor, Jr., Exec. V.P. Charlie Barton, Geol. - Land

**THE ANALYSTS**Core Analysis - Mud Logging  
Laurel - Ph. 649-3444

Bunk Caldwell

Frank Howson

**ATWATER, CARTER, MILLER & HEFFNER**

Consulting Geologists and Engineers

424 Whitney Bank Building

New Orleans, Louisiana 70130

(501) 581-6527

**DAVID K. BROOKS**

660 Milner Building Oil Exploration Jackson, Mississippi

948-5722

**BROWNING & WELCH**

GEOLOGISTS

Suite 1411, Standard Life Building

Jackson, Mississippi 39201

**C & K PETROLEUM, INC.**

1800 Capital Towers 601-948-1111

Jackson, Mississippi 39201

**CALLON PETROLEUM CO.**

P. O. Box 1287 Natchez, Mississippi 39120

**CAPITOL PRINTING & BLUE PRINT COMPANY**

330 East Rankin Street 353-2751

Jackson, Miss. 39202

**L. WICK CARY**

Room 932 Consulting Geophysicist Box 50391

National Bank of Commerce Bldg. New Orleans, La.

**THOMAS H. CLEMENTS**

Consulting Geophysicist

1738 Capital Towers Phone 601-355-8724

Jackson, Mississippi 39201

**CORE LABORATORIES, INC.**

Core Analysis and Well Logging

Laurel New Orleans

601-425-3394 504-524-6256

Jackson Mobile

601-932-1492 205-456-2271

**CRAFT PETROLEUM CO., INC.**

Wyatt E. Craft

Exploration

Operations

**LARRY WALTER**

Consulting Geologist 601-969-1260

1536 Deposit Guaranty Plaza Jackson, Miss. 39201

**CRUDE OIL PURCHASING, INC.**

P. O. Box 22660 Phone 601-948-5853

Jackson, Mississippi 39205

**DRESSER-ATLAS**

Jackson, Mississippi 948-5591

**ENSERCH EXPLORATION, INC.**Maurice N. Birdwell  
District Manger1530 Capital Towers P. O. Box 219  
Jackson, Mississippi 39205 601-969-0100**EXCHANGE OIL AND GAS CORPORATION**

1010 Common Street, New Orleans

504-581-4111

**HERBERT J. FERBER**

Consulting Geophysicist

5456 Hartsdale Drive 956-4666

Jackson, Mississippi

**FLORIDA GAS EXPLORATION CO.**1444 Capital Towers  
Jackson, Mississippi 39201**WADE FORTENBERY**

Geologist

P. O. Box 1183 - Natchez, MS Bus. 442-6011  
Office Hwy. 61 South Res. 442-3250**JOSEPH F. FRITZ**

Petroleum Geologist

Jackson, Miss. 601-354-1134

**H. LEROY FULGHUM**

Consulting Geologist

257 Valley Vista Drive 601-956-6346

Jackson, Mississippi 39211

**JAMES B. FURRH, JR.**

Oil Producer

1236 Capital Towers Jackson, Mississippi

**GEOPHYSICAL DATABANKS, INC.**1234 Loyola Bldg. Room 303  
New Orleans, La. 70112 504-581-4724

Grady Loftin Jim Malone

CDP data available in the following area:

Gulf Coast Appalachians Rockies

Agents for Petroconsultants, S.A.

**GEOPHYSICAL FIELD SURVEYS, INC.**

Seismic Exploration

Room 201 Jackson, MS

975 North Street



P. O. Box 12304, Colonial Station 601-948-1580

**GERMANY INVESTMENT CO.**Norman G. Germany E. Wilson Germany  
Dallas, Texas Natchez, Mississippi**GUARDIAN OIL COMPANY**L. Graham Hughes Charles S. McClelland  
1636 Capital Towers Jackson, Mississippi**CLAYTON W. WILLIAMS, JR.**

1536 Capital Towers 601-353-1644

Jackson, Miss. 39201

<b>G. W. GULMON &amp; ASSOCIATES</b> Petroleum Geologist Natchez, Mississippi	
H. E. Hansen, Dallas	A. T. Ricci, Jr., Natchez
<b>CLAUDE B. HAMMILL</b> Oil Operator 2306 First Nat'l Bank Bldg. Houston, TX 77002	
<b>W. L. HARPER</b> Geophysical Consultant 115 Sterling Towers Jackson, MS 39202 Phone 601-352-3339	
<b>GEORGE H. ISBELL, JR.</b> Geologist 1240 Capitol Towers Phone: (601) 948-4881	
<b>ALAN JACKSON</b> Consulting Geologist Telephone 601-582-1192 503 Mandalay Drive Hattiesburg, Mississippi 39401	
<b>ROBERT R. JACOBS</b> Petroleum Geologist P. O. Box 16263 Jackson, MS 39206 362-4846	
<b>JUSTISS-MEARS OIL CO., INC.</b> P. O. Drawer "N" Lena, Louisiana 71342 318-992-4000	
<b>H. E. KARGES</b> Consulting Geologist P. O. Box 1635 1812 Capital Towers Jackson, MS 39205 Phone 352-0972	
<b>K. B. KEARY, JR.</b> Petroleum Geologist 362-4895 439 W. Northside Dr. Jackson, MS 39206	
<b>WILBUR H. KNIGHT</b> Consulting Geologist 1017 First Nat'l Bank Bldg. Jackson, Miss. 355-1528	
<b>HILTON L. LADNER</b> Petroleum Geologist 354-3616 903 FNB Building Jackson, Mississippi	
<b>LARCO DRILLING COMPANY, INC.</b> Suite 1700 Jackson, Miss. 39201 Capital Towers Phone 355-1542	
<b>R. E. (Dick) LEE AND ASSOCIATES</b> The Redd Building 4443 I-55 North P. O. Box 5168 Jackson, MS 39216	
<b>LOCATION SAMPLE SERVICE, INC.</b> Well-logging Services Core Analysis  Bob Legate P. O. Box 9733, NSS Home Office: 601-932-1410 Jackson, MS 39206 Home: 601-939-0390	
<b>MILLER OIL PURCHASING CO.</b> A Division of Ergon, Inc.  P. O. Box 1308 Jackson, Mississippi 39205	
<b>ROBERT WOMACK, JR.</b> Consulting Geologist 1508 Standard Life Bldg. Jackson, MS 39201 Phone 353-4650	

<b>MOON-HINES</b>	
Robert M. Moon 601-354-3753	E. R. Hines, Jr. Jackson, Mississippi 39201
<b>M. D. (DALE) MYERS</b> Certified Petroleum Geologist P. O. Box 10553 601-355-3536 Jackson, MS 39209	
<b>OIL WELL LOGGING, INC.</b>  Glenn Clark Harvey Koehne P. O. Box 16039 P. O. Box 318 Jackson, MS Ellisville, MS 354-3642 477-8315	
<b>MARVIN L. OXLEY</b>  134 South Lamar St. 601-969-4149 Jackson, MS 39201 601-956-6446	
<b>MORTON M. PHILLIPS</b> Petroleum Geologist 902 Milner Bldg. Ph. 355-3364 Jackson, MS 39201 Ph. 366-9665	
<b>WILLIAM H. PLAYER &amp; ASSOCIATES</b> P. O. Box 1383 108 Wall St. Natchez, MS	
<b>PRUET &amp; HUGHES COMPANY</b> 1111 Capital Towers Building Jackson, Mississippi 39201	
<b>PAUL ANTHONY RADZEWICZ</b> Oil Producer 1829 Deposit Gty. Bldg. Jackson, MS 39201 969-3950	
<b>RIDGWAYS</b>  103 E. Pearl Street 355-4751 Jackson, Mississippi	
<b>SCHLUMBER WELL SERVICES</b>  Jackson, Mississippi Phone 352-8589	
 <b>Seismograph Service Corporation</b> A SUBSIDIARY OF RAYTHEON COMPANY P. O. Box 1590 • Tulsa, Okla. 74102 • (918) 627-3330 DISTRICT OFFICES AND DATA PROCESSING CENTERS HOUSTON • MIDLAND • DENVER • ALMA, MI	
<b>SOUTHERN NATURAL GAS CO.</b> P. O. Box 1513 Houston, Texas Donald R. Scherer, Dist. Geologist 622-7270	
<b>ROBERT L. THOMSEN</b> 1818 Capital Towers P. O. Box 1847 Jackson, Mississippi	
<b>WOOLF &amp; MAGEE, INC.</b> P. O. Box 3566, Tyler, Texas 75701 J. W. Arnold, Pres. Allen W. Woolf, Vice Pres. W. D. Magee, Jr., Sec.-Treas. A. B. Irion, Drig. Supt. Tyler, TX AC214-562-4051-Natchez, MS AC601-445-4570 Rotary Rigs in Texas, Louisiana, Arkansas, Mississippi and Alabama	
<b>Magcobar DATA Systems.</b> Over 10 million feet of well analysis experience.	
 Magcobar Division, Dresser Industries, Inc. PO Box 6504, Houston, Texas, 77005 713/784-6011	

MISSISSIPPI GEOLOGICAL SOCIETY  
P. O. BOX 422  
JACKSON, MS 39205



William Gordon McGee  
Enserch, Inc.  
P. O. Box 219  
Jackson, Miss. 39205



# NEWS

## BULLETIN

mississippi geological society



VOL. XXIV, No. 7, Mar. 1977

### MARCH 8 TOPIC: N. LA. SMACKOVER GAS SAND STIMULATION TECHNIQUE

#### THE GEOLOGICAL INTERPRETATION OF THE COMPLEX SEISMIC TRACE

DR. R. E. SHERIFF

(The following is a short description of the subject of J.G.S.'s March speaker. The talk is very pertinent to both the geological and the geophysical disciplines.—Ed.)

Geological information in addition to that contained in reflection arrival times can be derived from seismic data. Stacking velocity and reflection amplitude are examples of such extra information. Geological significance has sometimes been derived from variations in frequency and reflection wavelet shape but these have not been applied extensively. The inability to see changes quantitatively and lack of relating changes to documented geology have been drawbacks to such application.

With well-processed data which are relatively free of recording variations and noise and where the data have been migrated without distortion, changes in reflectivity indicate changes in the geology. Examples will be shown on the characteristics of unconformities, seismic sequence boundaries, faults, turbidite deposits, lithologic variations, gas and condensate accumulations, and distinguishing between bright spots caused by gas accumulations and lithologic features. Close liaison with geologists familiar with an area and ties to well logs and other hard data increase greatly the amount of geological significance which can be obtained. Seismic attribute analysis is also useful in field development in helping extrapolate well control to the surrounding region and in helping define field limits for the planning of development wells.

(Dr. Sheriff currently serves as senior vice president and director of the corporate technical staff of Seiscom Delta Inc. and as a lecturer and adjunct professor of geophysics at the University of Houston. Prior to joining Seiscom Delta in 1975 he held various positions during his 25 years employed with Standard Oil Company of California. In 1949 he was named Atomic Energy Commission Fellow. Shortly after receiving his B.A. from Wittenberg University in 1943, he began work on his Masters of Science at Ohio State University and served as a graduate assistant and lecturer. He received his PhD in Physics at Ohio State in 1950.—Ed.)

#### ELLISON AND RUSSO TO DISCUSS SOUTH SAREPTA FIELD

The Sun Oil team of Luther Ellison and Martin Russo will talk to the M.G.S. on March 8, 1977. Their subject will be the South Sarepta Field, Bossier Parish, Louisiana. They will discuss the geology of that gas sand field as well as Sun's unusual stimulation technique for the pay sand.

Both Ellison and Russo are longtime Sun Oil people. Luther is a petroleum engineer who attended Texas A&M and he is a member of A.I.M.E. as well as other organizations. Martin is a petroleum geologist; he attended S.M.U. and L.S.U. His memberships include A.A.P.G., Dallas Geological Society, and Dallas Geophysical Society.

As this paper has a bearing on current Mississippi interests, attendance probably will be heavy. So, call your reservations in to: T. C. RADER, 948-4128 before noon March 7.

#### MISSISSIPPI LEGISLATURE NEWS

Because of the possibly vital nature of Mississippi state legislation that could affect your business, the Mid-Continent Oil and Gas Association publishes a weekly report entitled "Mississippi Legislative Bulletin". A few excerpts from that bulletin are carried elsewhere in this issue. If, after reading the excerpts, you might be interested in becoming a subscriber, phone BILL McGEE, 969-0100, or DAVE CATE, 948-7550.

#### CALENDAR

- MAR. 8 M.G.S. EVENING MEETING, 5:30 p.m., Primos Northgate
- MAR. 21 J.G.S. EVENING MEETING, 5:30 p.m., Primos Northgate
- MAR. 30 PETROLEUM AUXILIARY, Deep South Tour

## PRESIDENT'S NOTES

The policy of inviting geology students free of charge to Society meetings was adopted at the February meeting of the Board of Directors. To defray this expense, members have been asked to sponsor a student at the meetings by paying for his or her meal. Several members have already volunteered, but additional help may be needed. If you care to do so please inform Ray Lewand or Ed Luper at the time you register for the meeting. Mississippi has active Geology Departments in four universities and we often have students from one or more of these schools at our meetings. Geology students are the basic part of the science and profession of geology and any encouragement we can give them to participate in the functions of the Society should be taken.

By now, many of you have been contacted concerning the updating of the Society's Redbook series. If you have received a request for field maps and supporting data, please take time to supply Les Aultman with this information so we can complete the updating as soon as possible. We don't ask for confidential information but we would like to have data and maps as complete as you can make them. The Redbook has not been updated since 1972 and much has occurred in the petroleum industry in Mississippi and throughout the southeast since then. The Society has received numerous requests for information on recently discovered fields and a valuable source of income is being lost to the Society. Please take time to help by completing your maps and data forms now.

David Cate

## MISSISSIPPI GEOLOGICAL SOCIETY

### OFFICERS

David Cate	President	First Miss. Corp.
Sarah Childress	1st Vice Pres.	Enserch
Lester Aultman	2nd Vice Pres.	Pruet & Hughes
Ed Luper	Secretary	Miss. Geol. Survey
Ray Lewand	Treasurer	Forest Oil
Jerry Zoble	Past President	Consultant

### DELEGATES

Phillip Reeves	A.A.P.G.	Pruet & Hughes
Alan Jackson	A.A.P.G.	Consultant
Kevin Cahill	G.C.A.G.S.	First Miss. Corp.

### COMMITTEES AND CHAIRMEN

AAPG Membership	Phillip Reeves and Alan Jackson
Continuing Education	Don Turner
Entertainment	T. C. Rader and Doug Harper
Golf	Verne Culbertson and Buddy Twiner
Job Placement Program	Larry Boland
Projection	Joe Fritz
Publicity	Bill Irwin

### NEWS BULLETIN STAFF

Editor	Bill McGee
Advertising Mgr.	Paul Day
Petroleum Auxiliary	Annette Jeffreys
Geophysics	Ray Phillips
Photography	Dan Herlihy
Progress	Don Beal

## MISSISSIPPI LEGISLATURE NEWS

(The following excerpts are from the "Mississippi Legislative Bulletin".—Ed.)

**Severance Tax Increase**—two bills so far: HB104 and SB2110. HB104 increases the tax to 12% or 12¢ on oil while SB2110 doubles the present tax on both oil and gas.

**Drilling on Non Producing Lands**—SB2311 requires a provision in leases which include more than one tract of land... "production on any tract of land included in this lease shall not extend, nor shall it be construed to extend, this lease on any other tract of land included in this lease on which there has been no production by the expiration of the primary term of the lease."

**Surface Owner Damages**—two bills: SB2258 and SB2259. Both would require payment of damages to the soil owner for damages to the land resulting from development and production of gas, oil and/or other minerals. SB2258 give the surface owner a 1/64 value of production and 2259 gives a 1/16 of value of production.

**Severed Minerals**—HB640. This bill would revert interests to surface owner in absence of exploratory drilling or production after 36 months.

## PERSONALS

CHARLES WEHNES has joined First Mississippi Corp. as Chief Geophysicist. Charlie was formerly with Texas Pacific in Lafayette and with Cities Service in Tulsa and Oklahoma City before that.

TOM JONES has joined Amerada Hess as manager of their Jackson office. Tom was manager of Cleary Petroleum's operations in Jackson before joining Amerada.

JIM STRIPLING has opened an office for Coquina in Jackson. Jim was Geological Manager for Cities Service's Southeastern Region before his move to Coquina.

DEAN KEBERT has opened an office for Weaver Oil and Gas in Jackson. Dean was Manager of Amerada's Jackson office prior to joining Weaver.

CHARLES MORRISON has joined Clements & Associates as geophysicist in Jackson. Charlie was previously with Cities Service and First Mississippi Corp. in Jackson.

LARS JOHNSON has joined Cleary Petroleum in Jackson. Lars was previously with Cities Service here.

RICHARD COPELAND is being recognized by A.A.P.G. for his longtime membership in that association. He will be presented with a gold pin carrying the A.A.P.G. emblem on which the number 50 (for 50 years) is prominent.

## EXECUTIVE BOARD MEETING MINUTES February 7, 1977

Attending: David Cate, Sarah Childress, Les Aultman, Ray Leward, Ed Luper, Bill McGee, Jerry Zoble

Dave informed the board of acknowledgements from Wilbur Baughman for flowers for his daughter, Lisa, and of thanks from the American Cancer Society for the memorial donation for Frank Howson.

A discussion was led by Dave Cate of a future Continuing Education session being held with the idea of having the subject to be Reservoir Engineering for the geologist. A total of 35 attended the session held on Land Techniques for Geologists. Suggestions will be accepted from the membership as to the subject they would like for the next C. E. session.

It was decided that a Cross Section would be prepared by a commercial artist and be sent to the National A.A.P.G. convention in Washington, D.C., to be displayed in the Society's Booth.

Dave Cate read a letter from Wendell Johnson, head of the Geology Department, Millsaps College, and also one from Edward Collins, President of Millsaps College, expressing their appreciation for the donation of \$250.00 given to the Geology Department.

Les Aultman discussed the probable high cost that will be incurred in up-dating the Red-Book. It was decided to continue this project in spite of the expense.

A discussion was held regarding the support that should be given the Supervisor of the Oil and Gas Board.

A policy has been initiated whereby geology students will be able to attend free all meetings, provided they have a sponsor who will pay the cost of the meeting.

Edwin E. Luper  
Secretary, M.G.S.

### PROGRESS - JANUARY 1977

#### Mississippi Completions—

Exploratory	Oil	Gas	Dry
Eocene	1	0	11
UK	0	0	3
LK	0	0	0
Jurassic	0	0	2
Paleozoic	0	0	2
Development	Oil	Gas	Dry
Eocene	15	0	10
UK	2	0	0
LK	0	3	2
Jurassic	0	0	0
Paleozoic	1	0	0

#### New Field Discoveries

Unnamed

D. Brasswell & Assoc. .  
No. 1 Thompson  
Section 42-5N-1E  
Franklin Co.  
Pders. 6517½ - 6520½ (Wilcox)  
1PP 30BOPD

## PETROLEUM AUXILIARY MEMBERS ENJOY STYLE SHOW

The Petroleum Auxiliary Club met recently at the Colonial Country Club for a luncheon and style show presented by Bruneau's.

Hostesses were Mrs. Steve Dennis, Chairman; Mrs. Bill Mason; Mrs. Don. S. Williams; Mrs. Doug Harper; Mrs. Jack Gooden; Mrs. Benton R. Vernon, Jr.; and Mrs. Lloyd G. Tankersley. Mrs. Bill Mason gave the invocation.

Lovely baskets of yellow mums were centered around the stage to add to the beauty of the style show.

Modeling were: Mrs. Benton Vernon, Mrs. Dick B. Mason, III, Mrs. Sidney Montgomery, Mrs. Emil Monsour, Mrs. Toxey Puckett, Mrs. Michael S. Pryor, Mrs. Steve Dennis, and Miss Kem Coffman.

The Auxiliary's next meeting will be a Deep South Tour on March 30, 1977.

### SHORT COURSE ON PROBABILITY METHODS IN OIL EXPLORATION

Stanford, California, 10 January 1977—A short course, "Probability Methods in Oil Exploration," will be held at Snowmass, Colorado, 11-16 September, 1977. The short course will be taught by Professors John C. Davis and John H. Doveton of The University of Kansas, and Professor John W. Harbaugh of Stanford University.

The short course is an outgrowth and extension of the 1975 American Association of Petroleum Geologists Research Conference on Probability Methods in Oil Exploration, held at Stanford University. The course will deal with methods for estimating the probability of success in oil and gas exploration ventures, utilizing geological and geophysical information. Details and registration forms may be obtained by writing Probability Short Course, Stanford University, Post Office Box 8888, Stanford, California, 94305, U.S.A.

#### FRIENDS OF THE SOCIETY

CORE LABORATORIES	LARCO DRUG. CO.
WYATT CRAFT	LOCATION SPL. SERVICE
JACK DANIEL	MAGCOBAR-DRESSER
DRESSER-ATLAS	OIL WELL LOGGING
ENGINEERING SERVICE	PEPPARD-SOUDERS AND ASSOCIATED
FLA. GAS EXPLN. CO.	PRUET & HUGHES CO.
FORREST OIL CO.	RIDGWAYS
XAVIER M. FRASCOGNA	SCHLUMBERGER
GEOL. CONSULTING SERV.	TOBIN MAP
HALLIBURTON	JAMES M. WHITE
JUSTISS-MEARS OIL CO.	CLAYTON W. WILLIAMS
HILTON LADNER	

**A & N PRODUCING SERVICES, INC.**

709 Standard Life Building P. O. Box 1669  
Jackson, Mississippi 39205

**AMERICA SOUTHWEST CORP.**

Box 936, Jackson, Miss. 354-2513  
Jack Pryor, Jr., Exec. V.P. Charlie Barton, Geol. - Land

**THE ANALYSTS**

Core Analysis - Mud Logging  
Laurel - Ph. 649-3444

Bunk Caldwell Frank Howson

**ATWATER, CARTER, MILLER & HEFFNER**

Consulting Geologists and Engineers  
424 Whitney Bank Building  
New Orleans, Louisiana 70130  
(501) 581-6527

**DAVID K. BROOKS**

660 Milner Building Oil Exploration Jackson, Mississippi  
948-5722

**BROWNING & WELCH  
GEOLOGISTS**

Suite 1411, Standard Life Building  
Jackson, Mississippi 39201

**C & K PETROLEUM, INC.**

1800 Capital Towers 601-948-1111  
Jackson, Mississippi 39201

**CALLON PETROLEUM CO.**

P. O. Box 1287 Natchez, Mississippi 39120

**CAPITOL PRINTING & BLUE PRINT COMPANY**

330 East Rankin Street 353-2751  
Jackson, Miss. 39202

**L. WICK CARY**

Room 932 Consulting Geophysicist Box 50391  
National Bank of Commerce Bldg. New Orleans, La.

**THOMAS H. CLEMENTS**

Consulting Geophysicist  
1738 Capital Towers Phone 601-355-8724  
Jackson, Mississippi 39201

**CORE LABORATORIES, INC.**

Core Analysis and Well Logging

Laurel New Orleans  
601-425-3394 504-524-6256  
Jackson Mobile  
601-932-1492 205-456-2271

**CRAFT PETROLEUM CO., INC.**

Wyatt E. Craft

Exploration Operations

**LARRY WALTER**

Consulting Geologist 601-969-1260  
1536 Deposit Guaranty Plaza Jackson, Miss. 39201

**CRUDE OIL PURCHASING, INC.**

P. O. Box 22660 Phone 601-948-5853  
Jackson, Mississippi 39205

**DRESSER-ATLAS**

Jackson, Mississippi 948-5591

**ENSERCH EXPLORATION, INC.**

Maurice N. Birdwell  
District Manger  
1530 Capital Towers P. O. Box 219  
Jackson, Mississippi 39205 601-969-0100

**EXCHANGE OIL AND GAS CORPORATION**

1010 Common Street, New Orleans  
504-581-4111

**HERBERT J. FERBER**

Consulting Geophysicist  
5456 Hartsdale Drive 956-4666  
Jackson, Mississippi

**FLORIDA GAS EXPLORATION CO.**

1444 Capital Towers  
Jackson, Mississippi 39201

**WADE FORTENBERY**

Geologist  
P. O. Box 1183 - Natchez, MS Bus. 442-6011  
Office Hwy. 61 South Res. 442-3250

**JOSEPH F. FRITZ**

Petroleum Geologist  
Jackson, Miss. 601-354-1134

**H. LEROY FULGHUM**

Consulting Geologist  
257 Valley Vista Drive 601-956-6346  
Jackson, Mississippi 39211

**JAMES B. FURRH, JR.**

Oil Producer  
1236 Capital Towers Jackson, Mississippi

**GEOPHYSICAL DATABANKS, INC.**

1234 Loyola Bldg. Room 303  
New Orleans, La. 70112 504-581-4724  
Grady Loftin Jim Malone  
CDP data available in the following area:  
Gulf Coast Appalachians Rockies  
Agents for Petroconsultants, S.A.

**GEOPHYSICAL FIELD SURVEYS, INC.**

Seismic Exploration  
Room 201 Jackson, MS  
975 North Street  
P. O. Box 12304, Colonial Station 601-948-1580

**GERMANY INVESTMENT CO.**

Norman G. Germany E. Wilson Germany  
Dallas, Texas Natchez, Mississippi

**GUARDIAN OIL COMPANY**

L. Graham Hughes Charles S. McClelland  
1636 Capital Towers Jackson, Mississippi

**CLAYTON W. WILLIAMS, JR.**

1536 Capital Towers 601-353-1644  
Jackson, Miss. 39201

**G. W. GULMON & ASSOCIATES**Petroleum Geologist  
Natchez, Mississippi

H. E. Hansen, Dallas

A. T. Ricci, Jr., Natchez

**CLAUDE B. HAMMILL**

Oil Operator

2306 First Nat'l Bank Bldg.

Houston, TX 77002

**W. L. HARPER**

Geophysical Consultant

115 Sterling Towers

Phone 601-352-3339

Jackson, MS 39202

**GEORGE H. ISBELL, JR.**

Geologist

1240 Capitol Towers

Phone: (601) 948-4881

**ALAN JACKSON**

Consulting Geologist

503 Mandalay Drive

Telephone 601-582-1192

Hattiesburg, Mississippi 39401

**ROBERT R. JACOBS**

Petroleum Geologist

P. O. Box 16263

362-4846

Jackson, MS 39206

**JUSTISS-MEARS OIL CO., INC.**

P. O. Drawer "N"

Lena, Louisiana 71342

318-992-4000

**H. E. KARGES**

Consulting Geologist

1812 Capital Towers

Phone 352-0972

P. O. Box 1635

Jackson, MS 39205

**K. B. KEARY, JR.**

Petroleum Geologist

439 W. Northside Dr.

Jackson, MS 39206

362-4895

**WILBUR H. KNIGHT**

Consulting Geologist

1017 First Nat'l Bank Bldg.

Jackson, Miss. 355-1528

**HILTON L. LADNER**

Petroleum Geologist

903 FNB Building

Jackson, Mississippi

354-3616

**LARCO DRILLING COMPANY, INC.**

Suite 1700

Capital Towers

Jackson, Miss. 39201

Phone 355-1542

**R. E. (Dick) LEE AND ASSOCIATES**

The Redd Building

P. O. Box 5168

4443 I-55 North

Jackson, MS 39216

**LOCATION SAMPLE SERVICE, INC.**

Well-logging Services

Core Analysis

Bob Legate

P. O. Box 9733, NSS

Jackson, MS 39206

Home Office: 601-932-1410

Home: 601-939-0390

**MILLER OIL PURCHASING CO.**

A Division of Ergon, Inc.

P. O. Box 1308

Jackson, Mississippi 39205

**ROBERT WOMACK, JR.**

Consulting Geologist

1508 Standard Life Bldg.

Phone 353-4650

Jackson, MS 39201

**MOON-HINES**

Robert M. Moon

601-354-3753

E. R. Hines, Jr.

1804 Capital Towers

Jackson, Mississippi 39201

**M. D. (DALE) MYERS**

Certified Petroleum Geologist

P. O. Box 10553

601-355-3536

Jackson, MS 39209

**OIL WELL LOGGING, INC.**

Glenn Clark

P. O. Box 16039

Jackson, MS

354-3642

Harvey Koehne

P. O. Box 318

Ellisville, MS

477-8315

**MARVIN L. OXLEY**

134 South Lamar St.

Jackson, MS 39201

601-969-4149

601-956-6446

**MORTON M. PHILLIPS**

Petroleum Geologist

902 Milner Bldg.

Ph. 355-3364

Ph. 366-9665

Jackson, MS 39201

**WILLIAM H. PLAYER & ASSOCIATES**

P. O. Box 1383

108 Wall St.

Natchez, MS

**PRUET & HUGHES COMPANY**

1111 Capital Towers Building

Jackson, Mississippi 39201

**PAUL ANTHONY RADZEWICZ**

Oil Producer

1829 Deposit Gty. Bldg.

969-3950

Jackson, MS 39201

**RIDGWAYS**

103 E. Pearl Street

Jackson, Mississippi

355-4751

**SCHLUMBER WELL SERVICES**

Jackson, Mississippi

Phone 352-8589

*Swisomograph Service Corporation*

A SUBSIDIARY OF RAYTHEON COMPANY

P. O. Box 1590 • Tulsa, Okla. 74102 • (918) 627-3330

DISTRICT OFFICES AND DATA PROCESSING CENTERS

HOUSTON • MIDLAND • DENVER • ALMA, MI

**SOUTHERN NATURAL GAS CO.**

P. O. Box 1513

Donald R. Scherer, Dist. Geologist

Houston, Texas

622-7270

**ROBERT L. THOMSEN**

1818 Capital Towers

Jackson, Mississippi

P. O. Box 1847

**WOOLF & MAGEE, INC.**

P. O. Box 3566, Tyler, Texas 75701

J. W. Arnold, Pres.

Allen W. Woolf, Vice Pres.

W. D. Magee, Jr., Sec.-Treas.

A. B. Irion, Drig. Supt.

Tyler, TX AC214-562-4051—Natchez, MS AC601-445-4570

Rotary Rigs in Texas, Louisiana, Arkansas,  
Mississippi and Alabama**Magcobar DATA Systems.**  
**Over 10 million feet**  
**of well analysis**  
**experience.**Magcobar Division, Dresser Industries, Inc.  
PO Box 6504, Houston, Texas 77005 713/784-6011

MISSISSIPPI GEOLOGICAL SOCIETY  
P. O. BOX 422  
JACKSON, MS 39205

William Gordon McGee  
Enserch, Inc.  
P. O. Box 219  
Jackson, Miss. 39205



# ~~297~~ 300

# NEWS

## BULLETIN

### mississippi geological society

VOL. XXIV, NO. 8, APR. 1977

## TUESDAY, APRIL 12: ANNUAL LADIES NIGHT

### EMPLOYMENT INTERVIEWS AT WASHINGTON AAPG CONVENTION

A.A.P.G. plans to have an Employment Interviews Center at the upcoming AAPG-SEPM Annual Convention in Washington, D.C. June 12 - 16, 1977.

Several good positions need to be filled and a large turnout for this Convention is expected. If any firm is interested in participating, they should contact:

Robert E. Davis  
U.S. Geological Survey  
National Center, Stop 911  
Reston, Virginia 22092  
(703) 860-6532

Geologists possibly interested in changing jobs should register beginning at 8:00 a.m. on Monday morning, June 13, in the Employment Interview Center in the Forum Room of the Shoreham Americana Hotel.

### FRIENDS OF THE SOCIETY

### CALENDAR

- Apr. 12 M.G.S. evening meeting, 6:30 p.m., Capital City Petroleum Club.
- Apr. 18 J.G.S. evening meeting, 5:30 p.m., Primos Northgate.



### RADER AND FRASCOGNA PLAN UNUSUAL EVENING MEETING

Capital City Petroleum Club, Tuesday, the 12th—that's the where and when for M.G.S.' annual "Ladies Night" meeting organized by T. C. Rader and Frank Frascogna. Because this meeting will offer something for every one of us, start making your plans now!

Kickoff time is 6:30 P.M., with registration in the Atrium on the 19th floor. (Registration: \$20 per couple) The social hour will be from 6:30 to 7:30 in the Penthouse on the 20th floor, and the dinner will be from 7:30 to 8:45 in the Main Dining Room. T. C. has arranged the menu as: Tossed green salad with house dressing, roast round of beef au jus, shrimp creole with rice, green beans Caesar, squash souffle, potatoes au gratin, peas and carrots, rolls and butter, and Almaden rose, coffee, and tea. Bananas Foster will be the dessert.

A short business session will be conducted immediately after dinner.

From 9 til midnight, Frank has arranged for dancing to the Bourbon Street music of Howard Jones. He also has arranged for local entertainment. Since there will be door prizes for the ladies, be sure to keep your ticket stubs. T. C. advises that drinks will be available in the bar after 9:00 P.M., @ \$1.25 each.

Due to last year's success with "Ladies Night", and to the promise that this one holds, let's help make this meeting another success by calling in for reservations to T. C. as early as possible. And please, no later than noon, Monday, April 11th. Phone T. C.'s office, 948-4128.

**MISSISSIPPI GEOLOGICAL SOCIETY**

**OFFICERS**

David Cate	President	First Miss. Corp.
Sarah Childress	1st Vice Pres.	Enserch
Lester Aultman	2nd Vice Pres.	Pruet & Hughes
Ed Luper	Secretary	Miss. Geol. Survey
Ray Lewand	Treasurer	Forest Oil
Jerry Zoble	Past President	Consultant

**DELEGATES**

Phillip Reeves	A.A.P.G.	Pruet & Hughes
Alan Jackson	A.A.P.G.	Consultant
Kevin Cahill	G.C.A.G.S.	First Miss. Corp.

**COMMITTEES AND CHAIRMEN**

AAPG Membership	Phillip Reeves and Alan Jackson
AAPG Public Information	Gene Taylor
Continuing Education	Don Turner
Entertainment	T. C. Rader and Doug Harper
Golf	Verne Culbertson and Buddy Twiner
Job Placement	Larry Boland
Program	Joe Fritz
Projection	Bill Irwin
Publicity	Sarah Childress
Field Trip	Jim May
Nomenclature	Jim Bollman

**NEWS BULLETIN STAFF**

Editor	Bill McGee
Advertising Mgr.	Paul Day
Petroleum Auxiliary	Annette Jeffreys
Geophysics	Ray Phillips
Photography	Dan Herlihy
Progress	Don Beal

It has been aptly stated that oil is found in the minds of men, but after reviewing a mass of 1976 south-eastern drilling statistics, it is obvious that oil is also found by he who puts the bit to the ground. The more this is done in the right trend, the better the chances for success. Of course, there are numerous obstacles along the way from dream to reality; no acreage, computers, bad numbers, expensive drilling, unbelievers, red tape, etc., and etc. All very annoying but all part of the business. Somehow, there are those who overcome these difficulties to put a number of tests down in areas with reasonable potential. The odds are that by doing this, success will follow. Such was true in Mississippi when 28 new-field discoveries were completed in 1976, the highest total in several years. Currently, the Lower Cretaceous Hosston trend in the Salt basin is the hot new play. Prior to that the Smackover, first shallow then deep, was the big play. After the Hosston, another play will develop not only because of the minds of men, but also because of those willing and able to put the bit to the ground. The MGS year is rapidly drawing to a close and we only have three scheduled events remaining. I urge all of you to attend these functions and help end the year with the enthusiasm and interest shown to date.

David Cate

**PERSONALS**

JIM SMITH has joined R. L. Burns here in Jackson. Jim was formerly with Skelly in Lafayette and with Cities Service in Jackson prior to that.

**SCHEDULED FUTURE CONVENTIONS  
OF A.A.P.G. — S.E.P.M.**

1977 — June 12-16	Washington, D.C. Sheraton-Park and Shoreham Americana Hotels- Co-Headquarters
1978 — April 9-12	Oklahoma City, Oklahoma. Myriad-Convention Headquarters: Skirvin Plaza-Headquarters Hotel.
1979 — April 1-4	Houston, Texas. Albert Thomas Convention Center-Convention Headquarters; Hyatt Regency- Headquarters Hotel.
1980 — June 8-11	Denver, Colorado. Currigan Exhibition Hall Convention Headquarters; Denver Hilton- Headquarters Hotel.

**FRIENDS OF THE SOCIETY**

CORE LABORATORIES	LARCO DRUG CO.
WYATT CRAFT	LOCATION SPL. SERVICE
JACK DANIEL	MAGCOBAR-DRESSER
DRESSER-ATLAS	OIL WELL LOGGING
ENGINEERING SERVICE	PEPPARD-SOUDERS AND
FLA. GAS EXPLN. CO.	ASSOCIATED
FOREST OIL CO.	PRUET & HUGHES CO.
XAVIER M. FRASCOGNA	RIDGWAYS
GEOL. CONSULTING SERV.	SCHLUMBERGER
HALLIBURTON	TOBIN MAP
JUSTISS-MEARS OIL CO.	JAMES M. WHITE
HILTON LADNER	CLAYTON W. WILLIAMS



## M.G.S. EXPRESSES SUPPORT FOR NEW SURVEY BUILDING

The following is the text of the Society's resolution to support the proposal for a new building for the Mississippi Geological Survey.

WHEREAS, the Mississippi Geological Society is officially domesticated with the Secretary of State of the State of Mississippi, and its membership reaches the full spectrum of professional geological activity in the State,

WHEREAS, a monthly meeting of the Society was held March 8, 1977, in Jackson, Mississippi, there being a quorum present sufficient for the transaction of business, and

WHEREAS, after a full discussion of the housing needs and services required of the Mississippi Geological Survey was had, and after determination and recognition of the responsibilities of the Mississippi Geological Society in matters of fostering economic development of our State through Geology, of improving the profession, and of protecting the general welfare of the Public,

NOW, THEREFORE, WE DO HEREBY RESOLVE unanimsously that the geological needs of the State of Mississippi require the building of a structure suitable and safe for the protection and preservation of the valuable libraries and collections of the Mississippi Geological Survey, for the provision of laboratories and offices for the study of mineral natural resources of the State, and for the establishment of a better competitive position of Mississippi among its sister states for the proper and wise development of our known mineral resources, and for the discovery of other resources not yet known.

AND BE IT RESOLVED, that the President and the Secretary move without delay to execute this resolution and to deliver copies to the members of the Capital Improvements Committee of the Mississippi Legislature, to the Commission of Budget and Accounting, to the Mississippi State Building Commission and to Governor Cliff Finch.

This in Jackson, Mississippi on the Eighth day of March, Nineteen Hundred and Seventy-Seven.

David Cate  
President

## NEW GULF COAST BIBLIOGRAPHY VOLUME NOW AVAILABLE

VOLUME 3 (1969-1974)  
Bibliography of GULF COAST GEOLOGY  
EDITED by Jules Braunstein  
PRICE \$5.50

### SPECIAL SET PRICE

Volumes 1, 2, and 3  
Regularly \$15.00  
NOW \$12.50

Address Orders To:  
Cambe Geological Services, Inc.  
1809 Louisiana Street  
Houston, Texas 77002

## EXECUTIVE BOARD MEETING

March 7, 1977

### MINUTES

ATTENDING: David Cate, Sarah Childress, Ed Luper, and Bill McGee.

Meeting was called to order at 1:15 P.M. by President Dave Cate.

Dave informed the Board that the G.C.A.G.S. has solicited for an ad in the up-coming transactions for the Convention which is to be held in Austin, Texas. It was decided that the ad would not be submitted until after the election of new officers for the Society.

A discussion was led by Dave concerning the Cross-section that is to be on display at the Society's booth at the A.A.P.G. Convention in Washington, D.C.

The Board unanimously voted to present a resolution to the membership at the next meeting in support of a new building to house the Mississippi Geological Survey.

A discussion was held on the April meeting which will be Ladies' Night.

There being no further business, the meeting was adjourned.

Ed Luper,  
Secretary

## PROGRESS—FEBRUARY 1977

### Mississippi Completions—

Exploratory	Oil	Gas	Dry
Eocene	1	0	9
UK	0	0	5
LK	0	1	1
Jurassic	0	0	0
Paleozoic	0	0	0

Development	Oil	Gas	Dry
Eocene	2	0	4
UK	2	0	1
LK	0	0	1
Jurassic	0	0	0
Paleozoic	0	2	0

### New Field Discoveries

Palatine Hills

Ogden Oil Corp.  
No. 1 MacNeil Trust  
Sec. 46-6N-3W  
Adams Co.  
Perfs. 3385-89 (sp.)  
1PF 140130PD, 12/64".

Union Church

Enserch Expln - Highland Res.  
Inexco No. 1 M.P. Buie  
Sec. 12-8N-4E  
Jefferson Co.  
Perfs. 15206-32, O.A. (Rod)  
1PF 1.8 MMCFGPD,  
29 BCPD, 16/64".

**A & N PRODUCING SERVICES, INC.**

709 Standard Life Building P. O. Box 1669  
Jackson, Mississippi 39205

**AMERICA SOUTHWEST CORP.**

Box 936, Jackson, Miss. 354-2513  
Jack Pryor, Jr., Exec. V.P. Charlie Barton, Geol. - Land

**THE ANALYSTS**

Core Analysis - Mud Logging  
Laurel - Ph. 649-3444

Bunk Caldwell Frank Howson

**ATWATER, CARTER, MILLER & HEFFNER**

Consulting Geologists and Engineers  
424 Whitney Bank Building  
New Orleans, Louisiana 70130  
(501) 581-6527

**DAVID K. BROOKS**

660 Milner Building Oil Exploration Jackson, Mississippi  
948-5722

**BROWNING & WELCH  
GEOLOGISTS**

Suite 1411, Standard Life Building  
Jackson, Mississippi 39201

**C & K PETROLEUM, INC.**

1800 Capital Towers 601-948-1111  
Jackson, Mississippi 39201

**CALLON PETROLEUM CO.**

P. O. Box 1287 Natchez, Mississippi 39120

**CAPITOL PRINTING & BLUE PRINT COMPANY**

330 East Rankin Street 353-2751  
Jackson, Miss. 39202

**L. WICK CARY**

Room 932 Consulting Geophysicist Box 50391  
National Bank of Commerce Bldg. New Orleans, La.

**THOMAS H. CLEMENTS**

Consulting Geophysicist  
1738 Capital Towers Phone 601-355-8724  
Jackson, Mississippi 39201

**CORE LABORATORIES, INC.**

Core Analysis and Well Logging

Laurel New Orleans  
601-425-3394 504-524-6256  
Jackson Mobile  
601-932-1492 205-456-2271

**CRAFT PETROLEUM CO., INC.**

Wyatt E. Craft

Exploration Operations

**LARRY WALTER**

Consulting Geologist 601-969-1260  
1536 Deposit Guaranty Plaza Jackson, Miss. 39201

**CRUDE OIL PURCHASING, INC.**

P. O. Box 22660 Phone 601-948-5853  
Jackson, Mississippi 39205

**DRESSER-ATLAS**

Jackson, Mississippi 948-5591

**ENSERCH EXPLORATION, INC.**

Maurice N. Birdwell  
District Manger  
1530 Capital Towers P. O. Box 219  
Jackson, Mississippi 39205 601-969-0100

**EXCHANGE OIL AND GAS CORPORATION**

1010 Common Street, New Orleans  
504-581-4111

**HERBERT J. FERBER**

Consulting Geophysicist 956-4666  
5456 Hartsdale Drive  
Jackson, Mississippi

**FLORIDA GAS EXPLORATION CO.**

1444 Capital Towers  
Jackson, Mississippi 39201

**WADE FORTENBERY**

Geologist  
P. O. Box 1183 - Natchez, MS Bus. 442-6011  
Office Hwy. 61 South Res. 442-3250

**JOSEPH F. FRITZ**

Petroleum Geologist  
Jackson, Miss. 601-354-1134

**H. LEROY FULGHUM**

Consulting Geologist 601-956-6346  
257 Valley Vista Drive  
Jackson, Mississippi 39211

**JAMES B. FURRH, JR.**

Oil Producer  
1236 Capital Towers Jackson, Mississippi

**GEOPHYSICAL DATABANKS, INC.**

1234 Loyola Bldg. Room 303  
New Orleans, La. 70112 504-581-4724  
Grady Loftin Jim Malone  
CDP data available in the following area:  
Gulf Coast Appalachians Rockies  
Agents for Petroconsultants, S.A.

**GEOPHYSICAL FIELD SURVEYS, INC.**

Seismic Exploration  
Room 201 Jackson, MS  
975 North Street  
P. O. Box 12304, Colonial Station 601-948-1580

**GERMANY INVESTMENT CO.**

Norman G. Germany E. Wilson Germany  
Dallas, Texas Natchez, Mississippi



**GUARDIAN OIL COMPANY**

L. Graham Hughes Charles S. McClelland  
1636 Capital Towers Jackson, Mississippi

**CLAYTON W. WILLIAMS, JR.**

1536 Capital Towers 601-353-1644  
Jackson, Miss. 39201

<b>G. W. GULMON &amp; ASSOCIATES</b> Petroleum Geologist Natchez, Mississippi	
H. E. Hansen, Dallas	A. T. Ricci, Jr., Natchez
<b>CLAUDE B. HAMMILL</b> Oil Operator 2306 First Nat'l Bank Bldg. Houston, TX 77002	
<b>W. L. HARPER</b> Geophysical Consultant 115 Sterling Towers Jackson, MS 39202 Phone 601-352-3339	
<b>GEORGE H. ISBELL, JR.</b> Geologist 1240 Capitol Towers Phone: (601) 948-4881	
<b>ALAN JACKSON</b> Consulting Geologist Telephone 601-582-1192 503 Mandalay Drive Hattiesburg, Mississippi 39401	
<b>ROBERT R. JACOBS</b> Petroleum Geologist P. O. Box 16263 Jackson, MS 39206 362-4846	
<b>JUSTISS-MEARS OIL CO., INC.</b> P. O. Drawer "N" Lena, Louisiana 71342 318-992-4000	
<b>H. E. KARGES</b> Consulting Geologist P. O. Box 1635 1812 Capital Towers Jackson, MS 39205 Phone 352-0972	
<b>K. B. KEARY, JR.</b> Petroleum Geologist 362-4895 439 W. Northside Dr. Jackson, MS 39206	
<b>WILBUR H. KNIGHT</b> Consulting Geologist 1017 First Nat'l Bank Bldg. Jackson, Miss. 355-1528	
<b>HILTON L. LADNER</b> Petroleum Geologist 354-3616 903 FNB Building Jackson, Mississippi	
<b>LARCO DRILLING COMPANY, INC.</b> Suite 1700 Jackson, Miss. 39201 Capital Towers Phone 355-1542	
<b>R. E. (Dick) LEE AND ASSOCIATES</b> The Redd Building 4443 I-55 North P. O. Box 5168 Jackson, MS 39216	
<b>LOCATION SAMPLE SERVICE, INC.</b> Well-logging Services Core Analysis Bob Legate P. O. Box 9733, NSS Home Office: 601-932-1410 Jackson, MS 39206 Home: 601-939-0390	
<b>MILLER OIL PURCHASING CO.</b> A Division of Ergon, Inc. P. O. Box 1308 Jackson, Mississippi 39205	
<b>ROBERT WOMACK, JR.</b> Consulting Geologist 1508 Standard Life Bldg. Jackson, MS 39201 Phone 353-4650	

<b>MOON-HINES</b> Robert M. Moon 601-354-3753 E. R. Hines, Jr. 1804 Capital Towers Jackson, Mississippi 39201	
<b>M. D. (DALE) MYERS</b> Certified Petroleum Geologist P. O. Box 10553 601-355-3536 Jackson, MS 39209	
<b>OIL WELL LOGGING, INC.</b> Glenn Clark Harvey Koehne P. O. Box 16039 P. O. Box 318 Jackson, MS Ellisville, MS 354-3642 477-8315	
<b>MARVIN L. OXLEY</b> 134 South Lamar St. 601-969-4149 Jackson, MS 39201 601-956-6446	
<b>MORTON M. PHILLIPS</b> Petroleum Geologist 902 Milner Bldg. Ph. 355-3364 Jackson, MS 39201 Ph. 366-9665	
<b>WILLIAM H. PLAYER &amp; ASSOCIATES</b> P. O. Box 1383 108 Wall St. Natchez, MS	
<b>PRUET &amp; HUGHES COMPANY</b> 1111 Capital Towers Building Jackson, Mississippi 39201	
<b>PAUL ANTHONY RADZEWICZ</b> Oil Producer 1829 Deposit Gty. Bldg. Jackson, MS 39201 969-3950	
<b>RIDGWAYS</b> 103 E. Pearl Street 355-4751 Jackson, Mississippi	
<b>SCHLUMBER WELL SERVICES</b> Jackson, Mississippi Phone 352-8589	
 <b>Seismograph Service Corporation</b> <small>A SUBSIDIARY OF BAYTECH COMPANY</small> P. O. Box 1590 • Tulsa, Okla. 74102 • (918) 627-3330 DISTRICT OFFICES AND DATA PROCESSING CENTERS HOUSTON • MIDLAND • DENVER • ALMA, MI	
<b>SOUTHERN NATURAL GAS CO.</b> P. O. Box 1513 Houston, Texas Donald R. Scherer, Dist. Geologist 622-7270	
<b>ROBERT L. THOMSEN</b> 1818 Capital Towers P. O. Box 1847 Jackson, Mississippi	
<b>WOOLF &amp; MAGEE, INC.</b> P. O. Box 3566, Tyler, Texas 75701 J. W. Arnold, Pres. Allen W. Woolf, Vice Pres. W. D. Magee, Jr., Sec.-Treas. A. B. Irion, Drig. Supt. Tyler, TX AC214-562-4051-Natchez, MS AC601-445-4570 Rotary Rigs in Texas, Louisiana, Arkansas, Mississippi and Alabama	
<b>Magcohar DATA Systems.</b> <b>Over 10 million feet</b> <b>of well analysis</b> <b>experience.</b>	
	
<small>Magcohar Division, Dresser Industries, Inc.  P.O. Box 6504, Houston, Texas, 77005 713/784-6011</small>	

MISSISSIPPI GEOLOGICAL SOCIETY  
P. O. BOX 422  
JACKSON, MS 39205

**BULK  
RATE  
No. 300**

# NEWS

# BULLETIN

mississippi geological society



VOL. XXIV, No. 9, May, 1977

XXV, No. 1, SEPTEMBER, 1977

## MAY 31: SHRIMP BOIL - ELECTION

### M.G.S. ELECTION

Election of 1977-78 officers for the Mississippi Geological Society will be held in conjunction with the annual spring dinner meeting at Fowler Buick Lodge on Ross Barnett Reservoir, Tuesday, May 31. Those unable to attend the meeting can obtain absentee ballots in advance from Secretary Ed Luper.

The nominating committee, of Gene Taylor (chairman), Elwood Ruhl, and Jim Bollman, has selected the following candidates: Les Aultman and Norwood Varnado, First Vice President; Joe Fritz and Ray Lewand, Second Vice President; Win Howard and Lars Johnson, Secretary; and, Steve Oivanki and Don Turner, Treasurer. Brief biographies and pictures of the candidates are presented elsewhere in this issue of the Bulletin. Officers' duties and responsibilities are outlined in the By-Laws.

In accordance with the By-Laws, the First Vice President automatically is the President-Elect. So, you will be voting for Aultman or Varnado for 1978-79 President.

### CALENDAR

- |        |   |
|--------|---|
| May 31 | M.G.S. Election - Dinner Meeting<br>Fowler Lodge, 4:30 P.M.           |
| June 3 | J.G.S. Golf Tourney - Picnic<br>Brookwood C.C., 8:00 A.M. & 5:00 P.M. |

### RADER PLANS UNUSUAL MAY MEET

Entertainment chairman *T. C. Rader* is working all out on the M.G.S. May meeting to be held at Fowler Buick Lodge on the 31st. This time, T. C. (Toujour Cajun) is planning a Gulf Coast shrimp boil (complete with the corn and potatoes) to follow the happy beer hour. Side dishes will be tossed salad and potato salad. At present, T. C. reports shrimps are scarce as hen's teeth, and that if sufficient quantities are not available, we will be provided with that great standby, a typical Daddy-O barbecue. The effort to mount this sort of event is very demanding, and volunteers are hereby notified that any help will be greatly appreciated.

Remember, due to the amount of work to be done for YOU, reservations must be made. And, because some of us will observe all of the Memorial Day holiday, please call T. C.'s office (948-4128) no later than noon, Friday, May 27th.

### JACKSON GEOPHYSICAL SOCIETY 24TH ANNUAL "DOODLEBUGGER'S" OPEN AND PICNIC

To be held at the Brookwood Country Club on Friday, June 3, is J.G.S.'s annual "biggie." Ray Phillips, President, has extended an invitation to the M.G.S. membership, so let's go! This affair is similar to last year's, except that tee-off time is 8:00 A.M., and the bingo-dinner is at 5:30 P.M.

Officers for 1977-1978 will be Tom Wood, President; Frank Bell, Vice President; and Bryan Haoli or Klyne Headley, Secretary-Treasurer.

## MISSISSIPPI GEOLOGICAL SOCIETY

### OFFICERS

David Cate	President	First Miss. Corp.
Sarah Childress	1st Vice Pres.	Enserch
Lester Aultman	2nd Vice Pres.	Pruet & Hughes
Ed Luper	Secretary	Miss. Geol. Survey
Ray Lewand	Treasurer	Forest Oil
Jerry Zoble	Past President	Consultant

### DELEGATES

Phillip Reeves	A.A.P.G.	Pruet & Hughes
Alan Jackson	A.A.P.G.	Consultant
Kevin Cahill	G.C.A.G.S.	First Miss. Corp.

### COMMITTEES AND CHAIRMEN

AAPG Membership	Phillip Reeves and Alan Jackson
Continuing Education	Don Turner
Entertainment	T. C. Rader and Doug Harper
Golf	Verne Culbertson and Buddy Twiner
Job Placement Program	Larry Boland
Projection	Joe Fritz
Publicity	Bill Irwin

### NEWS BULLETIN STAFF

Editor	Bill McGee
Advertising Mgr.	Paul Day
Petroleum Auxiliary	Annette Jeffreys
Geophysics	Ray Phillips
Photography	Dan Herlihy
Progress	Don Beal

## FRIENDS OF THE SOCIETY

CORE LABORATORIES	LARCO DRUG CO.
WYATT CRAFT	LOCATION SPL. SERVICE
JACK DANIEL	MAGCOBAR-DRESSER
DRESSER-ATLAS	OIL WELL LOGGING
ENGINEERING SERVICE	PEPPARD-SOUDERS AND
FLA. GAS EXPLN. CO.	ASSOCIATED
FOREST OIL CO.	PRUET & HUGHES CO.
XAVIER M. FRASCOGNA	RIDGWAYS
GEOL. CONSULTING SERV.	SCHLUMBERGER
HALLIBURTON	TOBIN MAP
JUSTISS-MEARS OIL CO.	JAMES M. WHITE
HILTON LADNER	CLAYTON W. WILLIAMS

## PRESIDENT'S NOTES

I have thoroughly enjoyed serving as President of the Mississippi Geological Society during the past year. Overall, the Society has had a good year. The regular monthly meetings were particularly successful and attendance was the highest in several years. The noon-time meetings were very popular and more of these probably will be held in future years. We were able to offer three continuing education programs and these were successful although attendance could have been better. If you missed our Ladies Night, then you missed probably the most enjoyable and successful event of the year. Participation in the fall golf tournament was very disappointing and it may be necessary to cancel this event or at least combine it with another tournament. Some of this year's projects will carry over into next year. Most notable is the updating of the Redbook which has not been done in five years. This project is important to the Society and if you are one of those who has received a request for maps or other information, please respond as soon as possible.

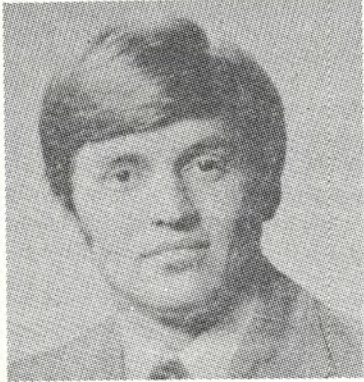
Financially, we were able to operate on income from the usual dues, contributions, advertising and publication sales. We were able to avoid asking for special contributions to operate on. We are especially thankful to our contributors who responded in fine fashion to our requests at the start of the year. Dues will not be increased next year but will remain at ten dollars, which is an exceptional bargain.

No organization functions properly without the help of a great many people and the Mississippi Geological Society is no exception. At the risk of slighting someone, I must mention several who worked to make this a successful year. Thanks to *T. C. Rader, Joe Fritz, Bill McGee, Don Turner, Frank Frascogna, Dan Herlihy, Paul Day, Doug Harper, Buddy Twiner, Verne Culbertson, Gene Taylor, Bill Irwin, Jerry Zoble*, and finally, the officers of the Society who upheld their offices and the attendant duties and responsibilities in a fine manner.

The 1977-1978 officer candidates are listed elsewhere in this bulletin and Gene Taylor and his committee have selected a well-qualified slate. I have found the operation of the Society to be serious business and I feel it is each member's duty to carefully consider the candidates and their qualifications before voting. Voting will be at the May 31 meeting but absentee ballots can be obtained for those who cannot attend. This year's President-Elect, **Sarah Childress**, will assume the President's office on June 1 and the business of the Society will continue smoothly during the transition.

We began the year with a very successful Mexican dinner and we close with a shrimp boil. Everyone is urged to attend the May 31 outing and help end the year on a high note.

# CANDIDATES FOR FIRST VICE PRESIDENT, PRESIDENT ELECT



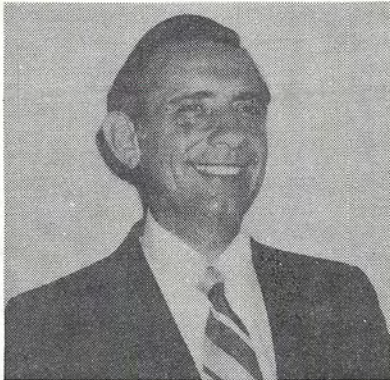
**LES AULTMAN**

Education: B.S. 1965 Millsaps College; B.S. 1971 University of Southern Mississippi, M.S. University of Southern Mississippi  
Employment: 1973-1974 Gulf, 1974 Pruett & Hughes  
Societies: A.A.P.G., M.G.S. - 1976-76 Asst. Editor, 1976-77 2nd Vice President

**NORWOOD VARNADO**

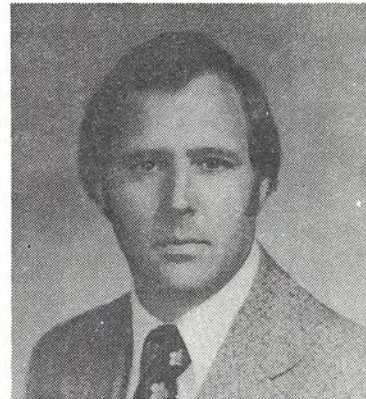
Education: B.S. 1951 Florida State, M.S. 1957 Louisiana State  
Employment: 1957-1968 Shell, 1968-1975 Independent, 1975- Hunt Energy  
Societies: A.A.P.G., M.P.L.A., M.G.S. - 1963 "Red Book"

# CANDIDATES FOR SECOND VICE PRESIDENT



**JOE FRITZ**

Education: B.S. 1953 Texas A & M, M.S. 1954 Texas A & M.  
Employment: 1954-1956 U.S. Army, 1956-1962 Humble, 1962-1976 Independent, 1976- Marion Corp.  
Societies: A.A.P.G., A.P.G.S. - 1976 President, M.G.S. - 1976-1977 Program Chairman



**RAY LEWAND**

Education: B.S. 1965 Millsaps, M.S. 1967 Baylor  
Employment: 1967-1968 Shell, 1968-1975 Cities Service, 1975- Forest Oil  
Societies: Baylor Geological Soc., M.G.S. - 1976-1977 Treasurer.

## CANDIDATES FOR SECRETARY



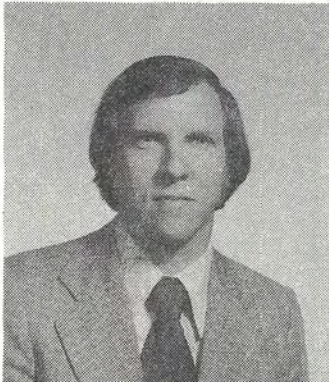
**WIN HOWARD**

Education: B.S. 1956 University Oklahoma  
Employment: 1956-1967 Humble, 1967-1972 Texas Pacific, 1972-1975 Anadarco, 1975- R. L. Burns Corp.  
Societies: A.A.P.G., M.G.S.

**LARS JOHNSON**

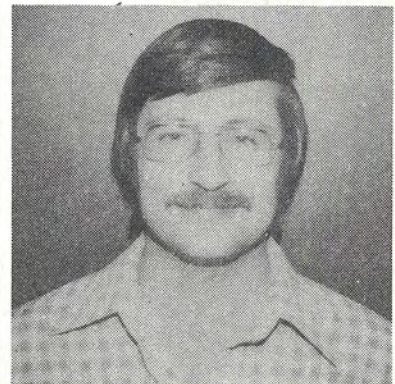
Education: B.S. 1970 Texas A & M, M.S. 1973 Texas A & M  
Employment: 1973-77 Cities Service, 1977- Cleary Petroleum  
Societies: A.A.P.G., S.E.P.M., M.G.S.

## CANDIDATES FOR TREASURER



**STEVE OIVANKI**

Education: B.S. 1971 Louisiana State  
M.S. 1973 Louisiana State  
Employment: 1973-76 Pennzoil, 1976- Shenandoah  
Societies: A.A.P.G., S.E.P.M., M.G.S.



**DON TURNER**

Education: B.S. 1970 University Wisconsin,  
M.S. 1972 University Wisconsin  
Employment: 1972- Union Oil Co.  
Societies: A.A.P.G., M.G.S. - 1976-1977 Continuing Education (Chair)



## EXECUTIVE BOARD MEETING

May 3, 1977  
MINUTES

Attending: **David Cate, Sarah Childress, Ray Lewand, Jerry Zoble, Bill McGee.**

A year's-end summary, by Cate, of various committees was follows:

Continuing Eductions (**Turner**) - apparent resurgence of interest, based on attendance at previous two talks. Sufficient notice of remains through postal cards, telephone canvasses, etc., recognized as helpful in bolstering attendance.

Entertainment (**Rader**) - "Ladies Night" successful for the second consecutive year, and should be continued. Menu variety for first (September) and last (May) meetings appreciated very much; desirable to be continued.

Golf (**Culbertson-Turner**) - last fall's tournament poorly attended, with only approximately 35 contestants. Downward trend evident, and efforts and costs may necessarily be directed elsewhere.

Nomenclature (**Bollman**) - no longer viable due to present Oil & Gas Board procedures.

Program (**Frity**) - topics well balanced. Noon meetings significantly better attended than evening meetings. Preference toward noon meetings might be given in the future.

Publications (**Aultman**) - Red Book supplement progressing slowly. Goal is approximately 50 fields, but have received data on only *w. one.*

Among other matters, Cate informed the board that M.G.S. judges for the June A.A.P.G. convention in Washington will be **Ed Luper** and **Emil Monsour**.

Following a general discussion of finances, it appeared that the Society's operating cash balance at year's end will be approximately the same as at the year's beginning.

## PETROLEUM AUXILIARY NEWS

The Petroleum Auxiliary Club recently enjoyed a Deep South Tour in St. Francisville, Louisiana. The plantations toured by the members consisted of Rosedown Plantation and Gardens, The Myrtles Plantation and Asphodel Plantation where they enjoyed lunch and shopping. The members enjoyed a cocktail party in Centreville, Mississippi in the home of Mrs. Venton McNabb to climax the tour.

Hostesses were Mrs. Verne L. Culbertson, Chairman; Mrs. Richard V. Bowman, Mrs. C. C. Murray, Mrs. Jerry Zoble, Mrs. R. C. Howard, and Mrs. Jack Daniel.

## HONORARY MEMBERSHIPS

Three people were awarded Honorary Memberships in the Mississippi Geological Society at the Annual Ladies Night festivities in April. Recipients of the awards were **Oleta Harrell, Fred Mellen, and Emil Monsour**. In connection with the awarding, each received a geode mounted on a plaque and a certificate of honorary membership.

These people have contributed greatly to the knowledge of the geology of the State of Mississippi and have also put in much time and effort in service to our Society. We were extremely proud to bestow these awards upon such capable, deserving, and qualified persons.

## PERSONALS

**Elwood Ruhl** and **Conner Smith** have resigned from Florida Gas Exploration Company to form Conwood Exploration Company with offices in the Capital Towers of Jackson. Elwood was Division Geologist and Conner was Division Land Manager in Florida Gas Exploration Company's Jackson Division office prior to their resignation.

**Ed Address** has been promoted to Division Geologist in Florida Gas Exploration Company's Jackson office. **Stan Thieling** has joined Florida Gas Exploration Company in Jackson as geologist. Stan was with Texaco in New Orleans. **Marlin Roberts** has been employed by Florida Gas Exploration Company as Division Land Manager in the Jackson office.

**Dale Reese**, former geologist with Bridger Petroleum Corporation in Dallas, Texas has joined Lear Petroleum in Dallas. Prior to moving to Dallas, Dale was with Florida Gas Exploration Company in Jackson.

**Phil Cook** has joined Forest Oil Company's geological staff in Jackson. Phil was with Amoco in New Orleans prior to his resignation.

**Maurice Birdwell** has been promoted in Enserch Exploration's recent reorganization to Exploration Director for their eastern region, which includes the U.S.A. east of a line from the Dakotas to San Angelo. In the eastern region, **Chuck Erwin** has been promoted to the position of Exploration Manager for the Arklatex area, while **Emil Monsour** is the new Exploration Manager for the area east of the Mississippi River.

**Claus Englehart** formerly with Union Oil, has joined the U.S.G.S. in Anchorage. **Al Escalanti** has transferred to Union's Jackson office from Los Angeles.

**MISSISSIPPI GEOLOGICAL SOCIETY  
1976-1977  
HONORARY MEMBERS**

**OLETA HARRELL**



**FRED MELLEN**

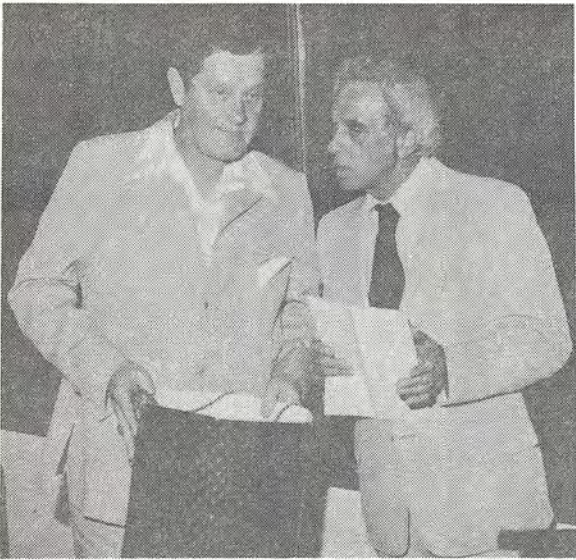
**EMIL MONSOUR**



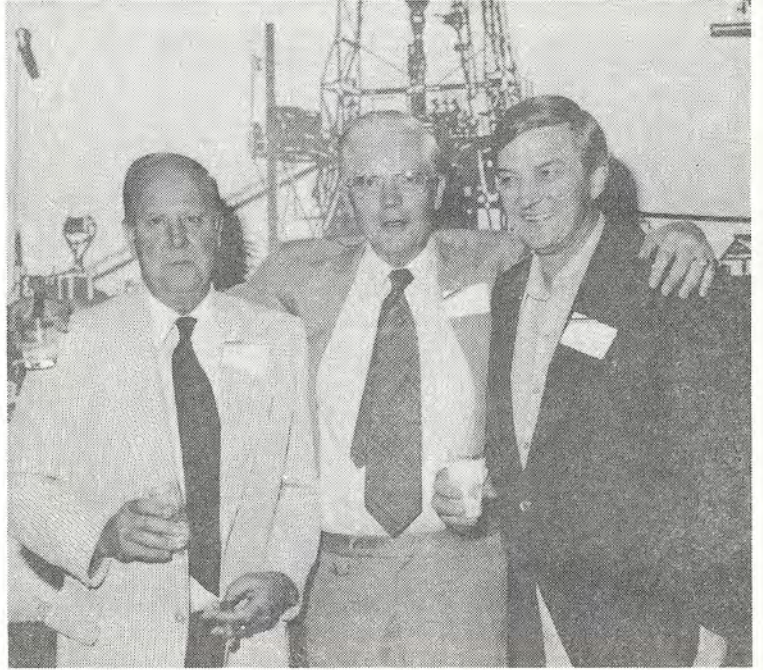
# 1976-1977 M.G.S. ROGUE GALLERY



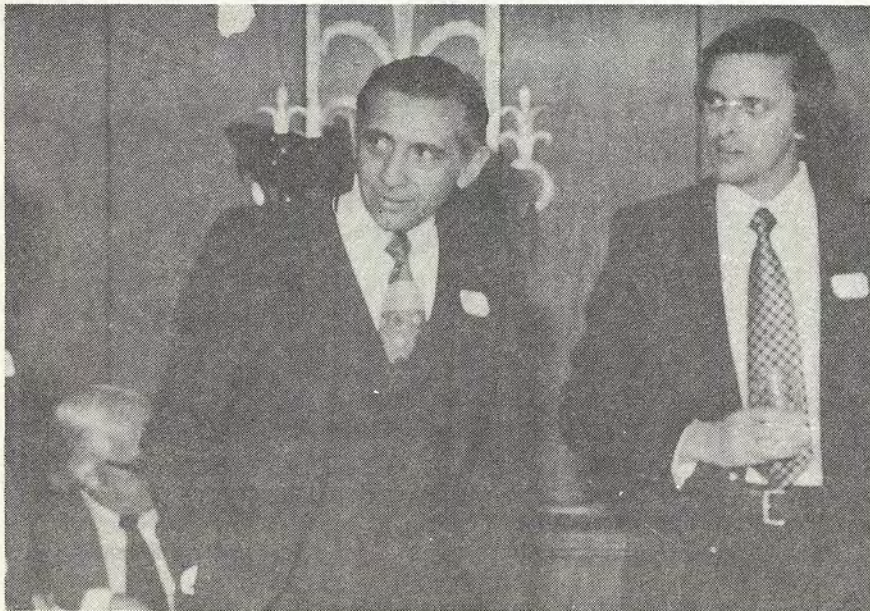
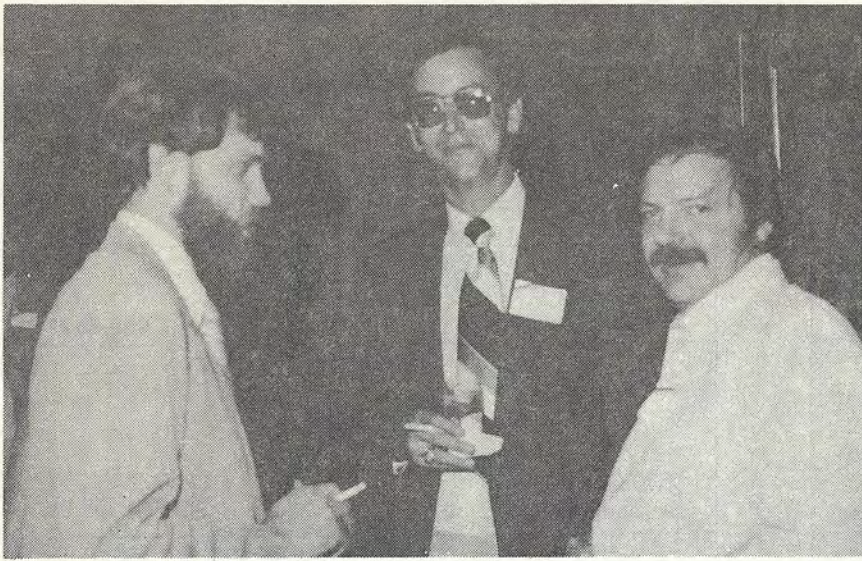
(Choose your own captions.  
They've got to be better than  
ours.—Ed.)



*"Wanna Rust A Union Block?"*








**PHOTOS**  
Courtesy of Dan Herlihy

<b>A &amp; N PRODUCING SERVICES, INC.</b>	
709 Standard Life Building	P. O. Box 1669
Jackson, Mississippi 39205	
<b>AMERICA SOUTHWEST CORP.</b>	
Box 936, Jackson, Miss.	354-2513
Jack Pryor, Jr., Exec. V.P.	Charlie Barton, Geol. - Land
<b>THE ANALYSTS</b>	
Core Analysis - Mud Logging Laurel - Ph. 649-3444	
Bunk Caldwell	Frank Howson
<b>ATWATER, CARTER, MILLER &amp; HEFFNER</b>	
Consulting Geologists and Engineers 424 Whitney Bank Building New Orleans, Louisiana 70130 (501) 581-6527	
<b>DAVID K. BROOKS</b>	
660 Milner Building Oil Exploration Jackson, Mississippi 948-5722	
<b>BROWNING &amp; WELCH GEOLOGISTS</b>	
Suite 1411, Standard Life Building Jackson, Mississippi 39201	
<b>C &amp; K PETROLEUM, INC.</b>	
1800 Capital Towers	601-948-1111
Jackson, Mississippi 39201	
<b>CALLON PETROLEUM CO.</b>	
P. O. Box 1287	Natchez, Mississippi 39120
<b>CAPITOL PRINTING &amp; BLUE PRINT COMPANY</b>	
330 East Rankin Street	353-2751
Jackson, Miss. 39202	
<b>L. WICK CARY</b>	
Room 932 Consulting Geophysicist	Box 50391
National Bank of Commerce Bldg.	New Orleans, La.
<b>THOMAS H. CLEMENTS</b>	
Consulting Geophysicist	
1738 Capital Towers	Phone 601-355-8724
Jackson, Mississippi 39201	
<b>CORE LABORATORIES, INC.</b>	
Core Analysis and Well Logging	
Laurel	New Orleans
601-425-3394	504-524-6256
Jackson	Mobile
601-932-1492	205-456-2271
<b>CRAFT PETROLEUM CO., INC.</b>	
Wyatt E. Craft	
Exploration	Operations
<b>LARRY WALTER</b>	
Consulting Geologist	601-969-1260
1536 Deposit Guaranty Plaza	Jackson, Miss. 39201

<b>CRUDE OIL PURCHASING, INC.</b>	
P. O. Box 22660	Phone 601-948-5853
Jackson, Mississippi 39205	
<b>DRESSER-ATLAS</b>	
Jackson, Mississippi	948-5591
<b>ENSERCH EXPLORATION, INC.</b>	
Maurice N. Birdwell District Manger	
1530 Capital Towers	P. O. Box 219
Jackson, Mississippi 39205	601-969-0100
<b>EXCHANGE OIL AND GAS CORPORATION</b>	
1010 Common Street, New Orleans 504-581-4111	
<b>HERBERT J. FERBER</b>	
Consulting Geophysicist	
5456 Hartsdale Drive	956-4666
Jackson, Mississippi	
<b>FLORIDA GAS EXPLORATION CO.</b>	
1444 Capital Towers Jackson, Mississippi 39201	
<b>WADE FORTENBERY</b>	
Geologist	
P. O. Box 1183 - Natchez, MS	Bus. 442-6011
Office Hwy. 61 South	Res. 442-3250
<b>JOSEPH F. FRITZ</b>	
Petroleum Geologist	
Jackson, Miss.	601-354-1134
<b>H. LEROY FULGHUM</b>	
Consulting Geologist	
257 Valley Vista Drive	601-956-6346
Jackson, Mississippi 39211	
<b>JAMES B. FURRH, JR.</b>	
Oil Producer	
1236 Capital Towers	Jackson, Mississippi
<b>GEOPHYSICAL DATABANKS, INC.</b>	
1234 Loyola Bldg.	Room 303
New Orleans, La. 70112	504-581-4724
Grady Loftin Jim Malone	
CDP data available in the following area:	
Gulf Coast Appalachians Rockies	
Agents for Petroconsultants, S.A.	
<b>GEOPHYSICAL FIELD SURVEYS, INC.</b>	
Seismic Exploration	
Room 201	Jackson, MS
975 North Street	
P. O. Box 12304, Colonial Station	601-948-1580
<b>GERMANY INVESTMENT CO.</b>	
Norman G. Germany	E. Wilson Germany
Dallas, Texas	Natchez, Mississippi
<b>GUARDIAN OIL COMPANY</b>	
L. Graham Hughes	Charles S. McClelland
1636 Capital Towers	Jackson, Mississippi
<b>CLAYTON W. WILLIAMS, JR.</b>	
1536 Capital Towers	601-353-1644
Jackson, Miss. 39201	

<b>G. W. GULMON &amp; ASSOCIATES</b> Petroleum Geologist - Natchez, Mississippi	
H. E. Hansen, Dallas	A. T. Ricci, Jr., Natchez
<b>CLAUDE B. HAMMILL</b> Oil Operator 2306 First Nat'l Bank Bldg. Houston, TX 77002	
<b>W. L. HARPER</b> Geophysical Consultant 115 Sterling Towers Jackson, MS 39202 Phone 601-352-3339	
<b>GEORGE H. ISBELL, JR.</b> Geologist 1240 Capitol Towers Phone: (601) 948-4881	
<b>ALAN JACKSON</b> Consulting Geologist Telephone 601-582-1192 503 Mandalay Drive Hattiesburg, Mississippi 39401	
<b>ROBERT R. JACOBS</b> Petroleum Geologist P. O. Box 16263 Jackson, MS 39206 362-4846	
<b>JUSTISS-MEARS OIL CO., INC.</b> P. O. Drawer "N" Lena, Louisiana 71342 318-992-4000	
<b>H. E. KARGES</b> Consulting Geologist P. O. Box 1635 1812 Capital Towers Jackson, MS 39205 Phone 352-0972	
<b>K. B. KEARY, JR.</b> Petroleum Geologist 362-4895 439 W. Northside Dr. Jackson, MS 39206	
<b>WILBUR H. KNIGHT</b> Consulting Geologist 1017 First Nat'l Bank Bldg. Jackson, Miss. 355-1528	
<b>HILTON L. LADNER</b> Petroleum Geologist 354-3616 903 FNB Building Jackson, Mississippi	
<b>LARCO DRILLING COMPANY, INC.</b> Suite 1700 Jackson, Miss. 39201 Capital Towers Phone 355-1542	
<b>R. E. (Dick) LEE AND ASSOCIATES</b> The Redd Building 4443 I-55 North P. O. Box 5168 Jackson, MS 39216	
<b>LOCATION SAMPLE SERVICE, INC.</b> Well-logging Services Core Analysis Bob Legate P. O. Box 9733, NSS Home Office: 601-932-1410 Jackson, MS 39206 Home: 601-939-0390	
<b>MILLER OIL PURCHASING CO.</b> A Division of Ergon, Inc. P. O. Box 1308 Jackson, Mississippi 39205	
<b>ROBERT WOMACK, JR.</b> Consulting Geologist 1508 Standard Life Bldg. Jackson, MS 39201 Phone 353-4650	

<b>MOON-HINES</b> Robert M. Moon 601-354-3753 E. R. Hines, Jr. 1804 Capital Towers Jackson, Mississippi 39201	
<b>M. D. (DALE) MYERS</b> Certified Petroleum Geologist P. O. Box 10553 601-355-3536 Jackson, MS 39209	
<b>OIL WELL LOGGING, INC.</b> Glenn Clark Harvey Koehne P. O. Box 16039 P. O. Box 318 Jackson, MS Ellisville, MS 354-3642 477-8315	
<b>MARVIN L. OXLEY</b> 134 South Lamar St. 601-969-4149 Jackson, MS 39201 601-956-6446	
<b>MORTON M. PHILLIPS</b> Petroleum Geologist 902 Milner Bldg. Ph. 355-3364 Jackson, MS 39201 Ph. 366-9665	
<b>WILLIAM H. PLAYER &amp; ASSOCIATES</b> P. O. Box 1383 108 Wall St. Natchez, MS	
<b>PRUET &amp; HUGHES COMPANY</b> 1111 Capital Towers Building Jackson, Mississippi 39201	
<b>PAUL ANTHONY RADZEWICZ</b> Oil Producer 1829 Deposit Gty. Bldg. Jackson, MS 39201 969-3950	
<b>RIDGWAYS</b> 103 E. Pearl Street 355-4751 Jackson, Mississippi	
<b>SCHLUMBER WELL SERVICES</b> Jackson, Mississippi Phone 352-8589	
 <b>Seismograph Service Corporation</b> A SUBSIDIARY OF HATHEGON COMPANY P. O. Box 1590 • Tulsa, Okla. 74102 • (918) 627-3330 DISTRICT OFFICES AND DATA PROCESSING CENTERS HOUSTON • MIDLAND • DENVER • ALMA, MI	
<b>SOUTHERN NATURAL GAS CO.</b> P. O. Box 1513 Houston, Texas Donald R. Scherer, Dist. Geologist 622-7270	
<b>ROBERT L. THOMSEN</b> 1818 Capital Towers P. O. Box 1847 Jackson, Mississippi	
<b>WOOLF &amp; MAGEE, INC.</b> P. O. Box 3566, Tyler, Texas 75701 J. W. Arnold, Pres. Allen W. Woolf, Vice Pres. W. D. Magee, Jr., Sec.-Treas. A. B. Irion, Dir. Supt. Tyler, TX AC214-562-4051-Natchez, MS AC601-445-4570 Rotary Rigs in Texas, Louisiana, Arkansas, Mississippi and Alabama	

**Magcozar DATA Systems.**  
Over 10 million feet  
of well analysis  
experience.



Magcozar Division, Dresser Industries, Inc.  
P.O. Box 6504, Houston, Texas 77005 713/784-6011

**PROGRESS  
MARCH & APRIL, 1977**

**Mississippi Completions—**

<b>E xploratory</b>	<b>Oil</b>	<b>Gas</b>	<b>Dry</b>
Eocene	1	0	19
UK	0	0	4
LK	0	4	2
Jurassic	2	0	7
Paleozoic	0	0	2
<b>Development</b>			
Eocene	8	0	17
UK	7	0	4
LK	2	3	5
Jurassic	0	1	2
Paleozoic	0	1	1

**MISSISSIPPI GEOLOGICAL SOCIETY  
TREASURER'S REPORT  
MAY 1, 1976 - APRIL 29, 1977**

---

<b>INCOME:</b>	
ADVERTISING	\$ 1,450.00
PUBLICATIONS	1,467.00
MEETINGS	2,204.00
CONTRIBUTIONS	1,784.00
DUES	3,720.00
<b>TOTAL</b>	<b>\$10,625.00</b>

---

<b>EXPENDITURES:</b>	
PUBLICATION COSTS	\$ 1,608.14
MEETINGS	4,795.27
SECRETARIAL SERVICES	431.40
CONTRIBUTIONS & SCHOLARSHIPS	352.50
POSTAGE	881.17
OFFICE SUPPLIES	60.00
STORAGE & INSURANCE	285.00
EQUIPMENT RENTAL	60.49
ACCOUNTING & AUDIT	100.00
G.C.A.G.S. & A.A.P.G.	1,185.25
MISCELLANEOUS	120.87
<b>TOTAL</b>	<b>\$ 9,880.09</b>

---

<b>BANK BALANCE - MAY 1, 1976</b>	\$ 1,015.16
<b>INCOME:</b>	\$10,625.00
	\$11,640.16
<b>EXPENSES:</b>	\$ 9,880.00
<b>BANK BALANCE - APRIL 29, 1977</b>	\$ 1,064.58
<b>SAVINGS ACCOUNT BALANCE</b>	\$ 3,566.99

MISSISSIPPI GEOLOGICAL SOCIETY  
P. O. BOX 422  
JACKSON, MS 39205

BULK RATE  
U.S. POSTAGE  
PAID  
JACKSON, MISS.  
PERMIT NO. 300