

NEWS BULLETIN

mississippi geological society



Vol. XXIII, No. 1, September, 1975

GOLF TOURNAMENT INITIATES 37TH M.G.S. YEAR

GOLF TOURNAMENT SEPT. 5

The Mississippi Geological Society will hold its annual fall golf tournament on Friday, September 5, at the Live Oaks Golf Club on Highway 49 North. Tee off time will be 9:00 A.M., to 12:00 Noon.

For those of you who are not familiar with this tournament, it is one of the more popular events sponsored by the Society and it has been especially enjoyable at Live Oaks. In addition to refreshments, good fellowship, etc., many nice prizes will be awarded to high and low handicappers alike.

It is becoming more difficult each year to find a place for this tournament due to complaints by members of the clubs in Jackson. Because of this, the golf pro has suggested that we make a sincere effort to tee off as early as possible in order that Live Oaks members will have a chance to play that afternoon.

Sponsors for this event will be announced in October.

For any questions concerning the tournament, please contact **Jim Cummings**, Phone No. 354-8755, or **Marshall Kern** at 353-3435.

BARBEQUE AT FOWLER LODGE SEPT. 30²⁷

The Mississippi Geological Society Annual Fall Barbeque will be held at Fowler Buick Lodge on Tuesday, September 30. The lodge doors will be opened at 4:30 P.M., and beer will be available from then until closing. The barbeque will be served at 6:30 P.M. Also, as usual, dues must be up to date. Dues may be paid to Secretary **Dave Cate** in advance, or at the door the evening of the barbeque. *WIN HOWARD*

We are again fortunate to have **T. C. Rader** and **J. C. (Daddy-O) Phillips** as our gourmet chefs this year. They have avered to outdo their last year's performance (which will take some fantastic effort!). This duo can prepare a mouth-watering feast without a doubt. They would like to have a few helpers, so if you are at all interested in helping, contact T.C.

The menu will be:

- Hors d'oeuvres - barbequed sausages
- Meats - barbequed beef, ribs, and ham steaks
- Vegetables - barbequed beans, potato salad
- Hot biscuits, olives, pickles, etc.
- Beer, coffee, tea

Reservations are a must, and everyone planning to attend should call T.C.'s office at 948-4128 no later than noon Monday, September 29. ²⁶

CALENDAR

Sept. 5	M.G.S. GOLF TOURNAMENT Live Oak Golf Club 9:00 A.M. to 12:00 Noon
Sept. 11	J.G.S. BARBEQUE Custiss Lodge, 4:30 P.M.
Sept. 16	PETROLEUM AUXILIARY TEA 1104 Hallmark Dr., 10:00 A.M.
Sept. -	GEOLOGICAL DISCUSSION GROUP Petroleum Club, 12:00 Noon
Sept. 30	M.G.S. FALL BARBEQUE Fowler Lodge, 4:30 P.M.
Oct. 22-24	G.C.A.G.S. ANNUAL MEETING Municipal City Auditorium

DINNER MEETINGS

As with some other societies, the Mississippi Geological Society has been faced with the problem of a suitable meeting place for its regular dinner meetings. Several places have been suggested, but no consensus has been reached. To help your officers in deciding on the most advantageous meeting place, ballots will be provided at the fall barbeque on September 30. This will be a good way to have a positive effect on the meetings; give a thought to it, and be prepared to express your opinion.

JGS BARBEQUE THURSDAY, SEPT. 11

The Jackson Geophysical Society will hold its annual fall barbeque on Thursday, Sept. 11, at Custiss Lodge. The door will be open at 4:30 P.M.

MISSISSIPPI GEOLOGICAL SOCIETY

OFFICERS

Jerry E. Zoble	President	Consultant
Elwood Ruhl	1st Vice Pres.	Florida Gas Exp.
Jim White	2nd Vice Pres.	Marr Co.
David Cate	Secretary	Florida Gas Exp.
Sarah Childress	Treasurer	Miss. Geo. Survey
W. E. Taylor	Past President	Consultant

DELEGATES

J. B. Goldman, Jr.	A.A.P.G.	Florida Gas Exp.
Philip R. Reeves	A.A.P.G.	Cities Service Oil
Kevin Cahill	G.C.A.G.S.	Shenandoah Oil

COMMITTEES AND CHAIRMEN

AAPG Membership	J. B. Goldman, Jr. & Philip R. Reeves
AAPG Public Information	Verne L. Culbertson
Entertainment	T. C. Rader
Golf	James L. Cummings
Nomenclature	James Bollman
Program	John D. Myers
Projection	Ronald Tisdale
Publicity	Verne L. Culbertson

NEWS BULLETIN STAFF

Editor	Bill McGee
Asst. Editor	Les Aultman
Advertising Mgr.	Paul Day
Petroleum Auxiliary	Virginia Force
Geophysics	Don Smith
Land	Rip Mason
Photographer	David Williamson
Progress	Don Biel

PRESIDENT'S NOTES

It's not often I get a forum like this to express my thoughts and gripes. First, let me say that it is a distinct pleasure to serve as your president during the coming year and I hope we can accomplish some things and schedule some events that will make this year truly memorable. I don't have any lofty goals or long-reaching objectives, but I do have two more moderate goals I would like to achieve.

First, I would like to see a more active participation in the work and programs of the society by our members of long standing. When I peruse our membership list, I find the names of members, many who have belonged for over a decade, that I rarely, if ever, see out our official society functions. If any of you feel the "shoe fits" while reading this commentary, please take a few minutes to drop me a line and make any suggestions you think will be helpful.

My second goal is to see a change in our constitution whereby we would eliminate the office of President from our annual ballot, but instead would provide that the First Vice President would automatically assume the presidency in the following year. Thus, a certain continuity to the business of our society would be realized. I would appreciate any comments, pro or con, in regard to this proposal.

Again, I am looking forward to an interesting and active year as president. I feel most fortunate in the caliber of officers elected to help me in administering the society's business and I am most thankful for the cooperation of the fine group of people who agreed to chair the various functional committees.

Of general interest, I would like to report that your executive committee at their July meeting decided the society should provide a job coordinating department. This department would provide companies looking for geologists to employ or retain information concerning people looking for a job or a change in their situation. I will report to you when this department becomes operative.

Let's have a super turnout for the upcoming fall barbecue. See you there!

Jerry Zoble

M.G.S. OFFICERS FOR 1975-1976



Jerry Zoble - President, Dave Cate - Secretary, Jim White - 1st Vice President, Sarah Childress - Treasurer, Elwood Ruhl - 2nd Vice President. Not pictured: Gene Taylor - Past President.

A & N PRODUCING SERVICES, INC.	
709 Standard Life Building Jackson, Mississippi 39205	P. O. Box 1669
AMERICA SOUTHWEST CORP.	
Box 936, Jackson, Miss.	354-2513
Gulf Coast Drilling & Exploration	
THE ANALYST	
Core Analysis - Mud Logging Laurel - Ph. 649-3444	
Bunk Caldwell	Frank Howson
ATWATER, CARTER, MILLER & HEFFNER	
Consulting Geologists and Engineers 424 Whitney Bank Building New Orleans, Louisiana 70130 (501) 581-6527	

PROGRESS

Mississippi Completions – April, May, June, July, 1975

Exploratory	Oil	Gas	Dry
Eocene	3	0	39
UK	0	0	4
LK	0	1	8
Jurassic	2	1	9
Paleozoic	0	0	6
Development			
Eocene	24	0	15
UK	0	0	0
LK	5	4	6
Jurassic	1	0	0
Paleozoic	0	4	1

39
12
6
2

New Field Discoveries

Calhoun	Florida Gas - Mosbacher et al, J. E. Hill Sec. 35-9N-13W Jones Co. 1 P/F (16495-512) Cotton Valley 247 BCPD + 928 MCFGPD 12/64" ch., TP 1715-1775, Gr. 48.2°.
No. Garden City	James B. Furrh, Jr. No. 1 Roland Sec. 41-5N-1E Franklin Co. 1 P/P (6526 1/2 - 528 1/2) Wilcox 72 BOPD, Gr. 37.7°.
Seminary	Florida Gas No. 1 R. Kelly Sec. 14-7N-15W Covington Co. 1 P/F (14462-480) Hosston 480 BCPD + 4,292 MCFGPD 18/64" ch., TP 2817, Gr. 52°.
So. Mills Branch	Hayes Pet., Inc. and J. L. Cummings, Jr. No. 1 U.S. A. 2-4 Sec. 2-5N-2E Franklin Co. 1 P/F (4412-413) Wilcox 72 BOPD, 7/64" ch, TP 770, Gr. -.
So. Paulding	Tesoro Pet. Corp. and Campbell and Assoc No. 1 Bergin Sec. 23-2N-12E Jasper Co. 1 P/F (14632-710) Smackover 684 BOPD, 20/64" ch., TP 300, Gr. 38°.
Washes	Callon Pet. Co. No. 1 Sessions Shields Sec. 56-8N-2W- Adams Co. 1 P/F (5734-735) Wilcox 78 BOPD, 8/64" ch., TP 250 lb., Gr. 43°.
W. Barnett	L. A. Grelling - C. J. Calhoun - Love Pet. Co. No. 1 Eddins Unit 13-15 Sec. 13-2N-13E Jasper Co. 1 P/F (13172-221 O.A.) Buckner 225 BOPD, 22/64" ch., TP 120, Gr. 36°.

G.C.A.G.S. SILVER ANNIVERSARY MEETING

On October 22-24 the Mississippi Geological Society will host the 25th meeting of the Gulf Coast Association of Geological Societies. The new Holiday Inn Downtown has been designated as Headquarters and technical sessions will be held in the Civic Auditorium.

Dr. Grover E. Murray, President of Texas Tech University at Lubbock, will be the keynote speaker and address an estimated 1200 geologists on the problems of achieving energy independence in the face of ever-increasing punitive Congressional legislation. Dr. Murray, professor of geology at L.S.U. until becoming Texas Tech president in 1966, has impressive credits. He is a member of the AGI and the National Science Board. He is a Fellow of the Geological Society of America and a former president of the AAPG.

Emil Monsour and Oscar Paulson have scheduled a broad scope of papers, with particular emphasis on Alabama-Florida Jurassic problems. Several of our local Society members are going to present papers. Charles Barton is going to speak on the unusual sealing mechanism at McNeal Field, Harold Karges will discuss the petroleum potential of shallow Mississippi salt domes, John Myers is covering the geology of Choctaw County, Alabama, and Lester Aultmen will talk about the Jurassic sand in Bay Springs Field. A former member, Dale Reese, is giving a paper on the post Ferry Lake South Mississippi clastics. There will also be a paper by Peter Boone on Chunchula Field that should be of interest to everyone at the conference.

A marvelous program of entertainment and recreation has been planned for all. Remember the dates, and don't fail to attend this "Silver Anniversary" meeting of the G.C.A.G.S.

DAVID K. BROOKS		
660 Milner Building	Oil Exploration	Jackson, Mississippi
948-5722		
BROWNING & WELCH		
GEOLOGISTS		
Suite 1411, Standard Life Building		
Jackson, Mississippi 39201		
C & K PETROLEUM, INC.		
1800 Capital Towers		601/948-1111
JACKSON, Mississippi 39201		
CALLON PETROLEUM CO.		
Box 1287		Natchez, Mississippi 39120
CAPITOL PRINTING & BLUE PRINT COMPANY		
330 East Rankin Street		353-2751
Jackson, Miss. 39202		
L. WICK CARY		
Room 932	Consulting Geophysicist	Box 50391
National Bank of Commerce Bldg.		New Orleans, La.
THOMAS H. CLEMENTS		
Consulting Geophysicist		
1378 Capital Towers		Phone 601/355-8724
Jackson, Mississippi 39201		

AUXILIARY OFFICERS HOST KICKOFF TEA

On Tuesday, September 16, 1975, the first meeting of the new club year for the Petroleum Auxiliary will be a Coffee at the home of Mrs. C. C. Murray, 1104 Hallmark Dr. Time will be 10:00 A.M. till 12:00 Noon. The new officers will be the hostesses. They are as follows:

Mrs. Marvin L. Oxley, President
Mrs. Stewart Welch, 1st Vice President
Mrs. Stephen C. Greer, 2nd Vice President
Mrs. Vann Michael, Secretary
Mrs. Toxey M. Puckett, Treasurer
Mrs. Chet Force, Reporter

JGS 1975-1976 OFFICERS

New officers for the Jackson Geophysical Society are as follows:

President	Don Smith , Union Oil
Vice President	C. Ray Phillips , Geophysical Field Survey
Secretary-Treasurer	Dick Schmitz , Dick Lee & Associates

CORE LABORATORIES, INC. Core Analysis and Well Logging		
Laurel 601/425-3394	New Orleans 504/524-6256	Brewton 205/867-7734
CRAFT PETROLEUM CO., INC. Wyatt E. Craft		
Exploration		Operations
DRESSER-ATLAS		
Jackson, Mississippi		948-5591
HERBER J. FERBER Consulting Geophysicist		
5456 Hartsdale Drive Jackson, Mississippi		956-4666

GEOLOGICAL DISCUSSION GROUP

The Geological Discussion Group will hold its regular monthly meeting in September 1975 in the Smackover Room of the Petroleum Club at the usual noon hour. Date of the meeting is not yet firm, because **Gene Taylor** and **Dan Herlihy** are making arrangements to have the Democratic Candidate for Governor of Mississippi as principal speaker.

AAPG EXPLORATION SCHOOL

The American Association of Petroleum Geologists and the Society of Exploration Geophysicists announce the first AAPG-SEG Petroleum Exploration School in Denver, November 3-14, 1975.

This new effort by two major petroleum exploration societies has been carefully designed to meet both the continuing education needs of seasoned explorationists as well as to acquaint less-experienced geologists and geophysicists with the most up-to-date and useful exploration techniques. Subject matter will benefit all geologists or geophysicists actively engaged in or concerned with petroleum exploration and energy resources, whether employed by industry, government, working as a consultant or as an independent operator. These courses will be presented by 18 distinguished lecturers, including industry explorationists, consultants and university professors, all active and highly qualified in their fields.

In this new AAPG-SEG Petroleum Exploration School, a comprehensive, current, concise view of the petroleum situation today, including actual skills which may be used immediately, can be obtained, in addition to valuable insights into the future of the industry and future needs of the explorationists. A manual which accompanies the course will be a valuable tool for future reference and review, and informal contacts with other participants and the speakers will have additional long-lasting benefits.

Early registration is strongly recommended as attendance will be strictly limited to 60, and indications are that this School will be heavily supported. The fee, exclusive of living costs, is \$525.00 to AAPG members and \$575.00 to non-members. For more information, contact **Jerry Zoble**.

FLORIDA GAS EXPLORATION CO. 1444 Capital Towers Jackson, Mississippi 39201

CONTINUING EDUCATION

Last year's continuing education efforts by the Society were met with what might be described as less-than-enthusiastic acceptance. The course offered was underwritten 100% by the Society, but attendance was in the neighborhood of 22. Was this because of the subject, the speakers, the time and/or meeting place - - or what? In order for the general membership to express an opinion on future continuing education matters, ballots will be issued at the barbeque on September 30.

CONTINENTAL DRIFT: USM COURSE

The University of Southern Mississippi would like to announce a graduate level class to be offered at the University Center Fall quarter. The class is: Hypothesis of Continental Drift - 602. The class will meet on Wednesday night and will be taught by Dr. R. L. Bowen.

WELCOME NEW MEMBERS

Fred Drovant - Welex
 Dorian Fleming - Systems Fuel
 Bill McGee - Lone Star

WADE FORTENBERY Geologist	
P. O. Box 1183 - Natchez, Miss. Office: Hwy. 61 South	Bus. 442-6011 Res. 442-3250
JOSEPH F. FRITZ Petroleum Geologist	
Jackson, Miss.	601/354-1134
H. LEROY FULGHUM Consulting Geologist	
257 Valley Vista Drive Jackson, Mississippi 39211	601/956-6346
JAMES B. FURRH, JR. Oil Producer	
1236 Capital Towers	Jackson, Mississippi
GEOPHYSICAL DATABANKS, INC.	
1234 Loyola Bldg. New Orleans, La. 70112	Room 303 504-581-4724
Grady Loftin Jim Malone CDP data available in the following area: Gulf Coast Appalachians Rockies Agents for Petroconsultants, S.A.	
GEOPHYSICAL FIELD SURVEYS, INC. Seismic Exploration	
Room 201 P. O. Box 12304, Colonial Station	Jackson, MS 601/948-1580
GERMANY INVESTMENT CO.	
Norman G. Germany Dallas, Texas	E. Wilson Germany Natchez, Mississippi

BULLETIN AND ADVERTISEMENTS TERMINATE WITH 74-75 DUES YEAR

The first issue of the Bulletin is being sent to all members of the Society who paid 1974-75 dues. If you have not paid the ten dollars for your 1975-76 dues by now - you are in arrears. September is the end of the grace period for receiving the Bulletin. Starting with the October issue the Bulletin will be mailed only to those listed on the 1975-76 membership roster.

The Society's advertisers are advised that last year's ads for the News Bulletin also expire with this edition. The next Bulletin will carry only those ads paid for by printing time in mid-September.

We wish to thank last year's sponsors of the News Bulletin. With out their help we would not be able to print it. In turn, let's show our thanks by calling a News Bulletin Sponsor when we have need of a service, and tell them where you read their ad, it helps.

We would like to invite other sponsors to place an ad in our bulletin.

The rates are as follows:

\$25.00 for 1/2" X 3 3/4"

\$50.00 for 1" X 3 3/4"

Contact **Paul Day**

Dean Kebert seems to be no worse for wear for his offshore Nigerian well-sitting stunt. He's back now, hitting the ground a'runnin'.

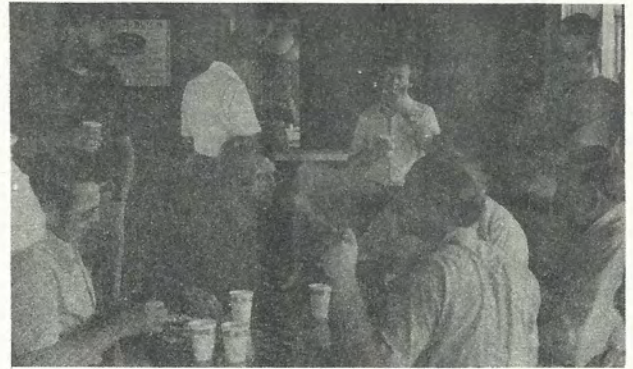
Anyone in need of prime office space in the Capital Towers? Jerry Zoble knows where there is such space available, and what the fringes are.

The Rocky Mountain Sections of A.A.P.G. are calling for papers for their March, 1976, convention. The theme is "New Concepts of Exploration in the Rockies", but don't be misled by that "in the Rockies". They need papers about new objectives and concepts caused by changes in economics.

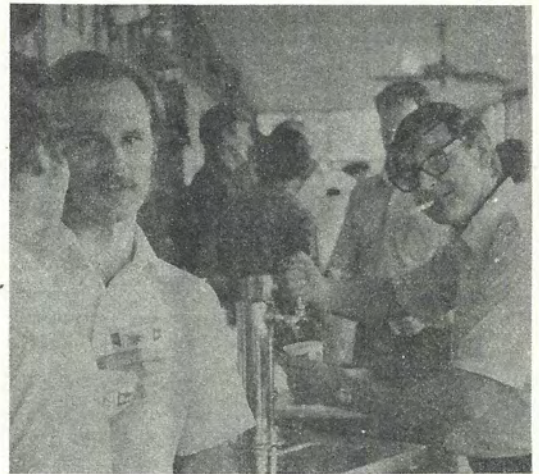
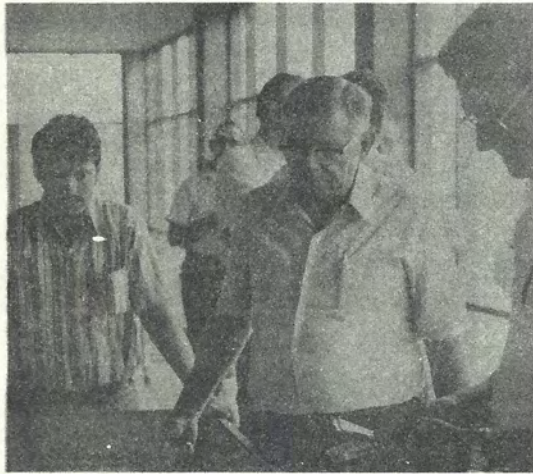
A.A.P.G.'s Public Information Committee has sent the third background paper to Congressional representatives. This one deals with exploration risks. For more information on this paper contact Verne Culbertson.

From time to time, and for one reason or another, some paid-up members have failed to receive the Bulletin. We try, you know, but who is infallible? If you know of anyone who is not getting his Bulletin, suggest he check with Dave Cate at Florida Gas.


GUARDIAN OIL COMPANY	
L. Graham Hughes 1636 Capital Towers	Charles S. McClelland Jackson, Mississippi
G. W. GULMON & ASSOCIATES Petroleum Geologist Natchez, Mississippi	
H. E. Hansen, Dallas	A. T. Ricci, Jr., Natchez
CLAUDE B. HAMMILL Oil Operator 2306 First Nat'l Bank Bldg. Houston, TX 77002	
W. L. HARPER Geophysical Consultant	
115 Sterling Towers	Jackson, Miss. 39202 Phone 601-352-3339
FRANK HOWSON ASSOCIATES	
5531 Dyer St., Suite 110	Dallas, Texas 75206 214/361-8467
ALAN JACKSON	
Consulting Geologist 503 Mandalay Drive	Telephone 601-582-1192 Hattiesburg, Mississippi 39401
ROBERT R. JACOBS Petroleum Geologist	
P. O. Box 16263	Jackson, Mississippi 39206 362-4846
JUSTISS-MEARS OIL CO. INC.	
P. O. Drawer "N"	Jena, Louisiana 71342 (318) 992-4000
H. E. KARGES Consulting Geologist	
1812 Capital Towers Phone 352-0972	P. O. Box 1635 Jackson, Miss. 39205
WILBUR H. KNIGHT Consulting Geologist	
1017 First Nat'l Bank Bldg.	Jackson, Miss. 355-1528



SPRING
BARBECUE
DOIN'S



MORTON M. PHILLIPS Petroleum Geologist 902 G Milner Bldg. Ph. 355-3364 Jackson, Miss. 39201 Ph. 366-9600	
LARCO DRILLING COMPANY, INC. Suite 1700 Capital Towers Jackson, Miss 39201 Phone 355-1542	
R. E. Dick LEE AND ASSOCIATES The Redd Building 4443 I-55 North P. O. Box 5168 Jackson, MS 39216	
LOCATION SAMPLE SERVICE, INC. Bob Legate Jackson, Mississippi 932-1410	
LONE STAR PRODUCING COMPANY Maurice N. Birdwell District Manager 1530 Capital Towers Jackson, Miss. 39205 P. O. Box 219 601/969-0100	
MILLER OIL PURCHASING CO. A Division of Ergon, Inc. P. O. Box 1308 Jackson, Mississippi 39205	
MOON-HINES Robert M. Moon 1804 Capital Towers E. R. Hines, Jr. Jackson, Mississippi 39201 601-354-3753	
M. D. (DALE) MYERS CONSULTANT GEOLOGIST Phone (601) 355-3536	
OIL WELL LOGGING, INC. P. O. Box 16039 - Jackson, Mississi vi 354-3642	
MARVIN L. OXLEY 134 South Lamar St. Jackson, Miss. 39201 601/969-4149 601/956-6446	
HILTON L. LADNER Petroleum Geologist 903 FNB Building Jackson, Mississippi 354-3616	
WILLIAM H. PLAYER & ASSOCIATES P. O. Box 1383 108 Wall St. Natchez, MS	
PRUET & HUGHES COMPANY 1111 Capital Towers Building Jackson, Mississippi 39201	
PAUL ANTHONY RADZEWICZ Oil Producer 1829 Deposit Gty. Bldg. 969-3950 Jackson, Miss. 39201	

RIDGWAYS 103 E. Pearl Street Jackson, Mississippi 355-4751	
SCHLUMBERGER WELL SERVICES Jackson, Mississippi Phone 352-8589	
 Seismograph Service Corporation A SUBSIDIARY OF RAYTHEON COMPANY P.O. Box 1590 • Tulsa, Okla. 74102 • (918) 627-3330 DISTRICT OFFICES AND DATA PROCESSING CENTERS HOUSTON • MIDLAND • DENVER • ALMA, MI. • ANCHORAGE	
SOUTHERN NATURAL GAS CO. P. O. Box 1513 Houston, Texas Donald R. Scherer, Dist. Geologist 622-7270	
ROBERT L. THOMSEN 1818 Capital Towers Jackson, Mississippi P. O. Box 1847	
WOOLF & MAGEE, INC. P. O. Box 3566 Tyler, Texas 75701 J. W. Arnold, Pres. Allen W. Woolf, Vice Pres. W. D. Magee, Jr., Sec.-Treas. A. B. Irion, Drig. Supt. Tyler, TX AC 214 562-4051 - Natchez, MS AC 601 445-4570 Rotary Rigs in Texas, Louisiana, Arkansas, Mississippi and Alabama	
ROBERT WOMACK, JR. Consulting Geologist 1509 Standard Life Bldg. Jackson, Miss. 39201 Phone 353-4650	

MISSISSIPPI GEOLOGICAL SOCIETY

P. O. Box 422

Jackson, Miss. 39205

NEWS

BULLETIN

mississippi geological society

VOL. XXIII, NO. 2 October, 1975



M.G.S. HOSTS '75 G.C.A.G.S. MEETING

AAPG ANNOUNCES 1976-77 NOMINEES FOR NATIONAL OFFICE

TULSA, Okla. - The slate of candidates for AAPG office for the 1976-77 year has been approved by the Executive Committee and released by President John Kilkenny. The Association's election will be held in the spring of 1976, and the candidates elected to office will begin to serve on July 1, 1976.

For President-Elect

Frank W. Harrison, Jr., Independent, Lafayette, La.
Edd R. Turner, Getty Oil, Houston, Texas

For Vice-President

Ralph L. Miller, USGS, Washington, D.C.
Gordon H. Wood, Jr., USGS, Washington, D.C.

For Treasurer

George S. Galbraith, Independent, Abilene, Texas
Theodore Off, Ojai Oil, Ventura, California

A more complete release, including biographical information on the candidates, will be printed in a later issue.

The Mississippi Geological Society will host the "Silver Anniversary" meeting of the G.C.A.G.S. on October 22-24. The G.C.A.G.S. is one of the strongest, if not the strongest, of geological societies' associations, and this meeting promises to be a typically well-attended one. Keynoter Dr. Grover Murray will address the problems of achieving energy independence while confronted with punitive Federal legislation. Emil Monsour's technical program is timely and focuses on the petroleum geology of Mississippi, Alabama, and Florida. Golf and tennis tournaments, a Natchez Pilgrimage tour for the ladies, and the Thomasville gas plant trip are but a few of the outstanding activities on top. Bill Moore and Charlie Williams have led a very able group in putting this meeting together; all are to be congratulated heartily.

SPONSORS FOR GOLF TOURNAMENT

The following companies, by their generous support, enabled Jim Cummings and his crew to put on a typically good tournament. They all deserve the thanks of the Society.

AMERICAN SOUTHWEST
THE ANALYSTS
BAROID
CRAFT PETROLEUM
CRUDE OIL PURCHASING
DRESSER ATLAS
ENGINEERING SERVICE
FORTENBERRY DRILLING
I M C
LARCO DRILLING
LOCATION SAMPLE

MAGCOBAR
MILCHEM
MISS. MUD
MISS. MUD LOGGING
NEELY BLUE PRINT
OIL WELL LOGGING
PETR. INFO.
L. L. RIDGEWAY
SCHLUMBERGER
WELEX

CALENDAR

Oct. 12-16	S.E.G. ANNUAL MEETING Denver, Colorado
Oct. 22-24	G.C.A.G.S. ANNUAL MEETING Municipal City Auditorium, Jackson
Oct. 27	J.G.S. MEETING Primos Northgates, 5:30 P.M.
Oct. 31-Nov. 1	A.I.P.G. ANNUAL MEETING Tucson, Arizona

I think our golf tournament was a great success in spite of the rain and got our new year started with a bang. A big "thanks" to Jim Cummings and Marshall Kern.

Most of you are aware of the G.C.A.G.S. Convention here October 22nd-24th. Bill Moore, Charlie Williams and all the various chairmen are doing a terrific job so far, but as the time approaches these people will need special help. Anyone who would like to get involved in putting on this convention, particularly during the convention, please contact Charlie Williams. I would like to add here that I was most gratified by the response of the membership to my special appeal for advertising support of the G.C.A.G.S. Transactions. We increased their advertising by 50%. Many thanks!

You may recall in the last bulletin, I discussed briefly the creation of a Job Placement Committee. Well, such a committee has been formed, and is currently functional. Larry Boland, Harkins & Company, has very graciously agreed to act as a committee of one, to handle this most important job. Any companies or individuals interested in hiring a geologist, please contact Larry so that he can obtain the specific details. Also, Those individuals interested in changing their situations should also contact Larry, so that he can get the various parties together. Everything will be treated confidentially, of course.

See you all at the Convention!

Jerry Zoble

MISSISSIPPI GEOLOGICAL SOCIETY

OFFICERS

Jerry E. Zoble	President	Consultant
Elwood Ruhl	1st Vice Pres.	Florida Gas Exp.
Jim White	2nd Vice Pres.	Marr Co.
David Cate	Secretary	Florida Gas Exp.
Sarah Childress	Treasurer	Miss. Geo. Survey
W. E. Taylor	Past President	Consultant

DELEGATES

J. B. Goldman, Jr.	A.A.P.G.	Florida Gas Exp.
Philip R. Reeves	A.A.P.G.	Cities Service Oil
Kevin Cahill	G.C.A.G.S.	Shenandoah Oil

COMMITTEES AND CHAIRMEN

AAPG Membership	J. B. Goldman, Jr. & Philip R. Reeves
AAPG Public Information	Verne L. Culbertson
Entertainment	T. C. Rader
Golf	James L. Cummings
Nomenclature	James Bollman
Program	John D. Myers
Projection	Ronald Tisdale
Publicity	Verne L. Culbertson

NEWS BULLETIN STAFF

Editor	Bill McGee
Asst. Editor	Les Aultman
Advertising Mgr.	Paul Day
Petroleum Auxiliary	Virginia Force
Geophysics	Don Smith
Land	Rip Mason
Photographer	David Williamson
Progress	Don Biel

PETROLEUM AUXILIARY

The home of Mrs. Bill Murray, Woodlea, was the setting for a Coffee that was the first meeting of the the club year of the Petroleum Auxiliary.

Lovely arrangements of flowers added to the warmth of the Murray home with Fall flowers of several varieties and roses from the Murray's own garden.

Hostesses were the officers for the club year 1975-76. They are - Mrs. Marvin Oxley, President, Mrs. Stewart Welch, First Vice President, Mrs. Stephen Greer, Second Vice President, Mrs. Vann Michael, Secretary, Mrs. Toxey Puckett, Treasurer and Mrs. Chet Force, Reporter.

Assisting the hostesses at the coffee table were Mrs. James H. Stewart, Jr., Mrs. Harold D. Baker and Mrs. Richard V. Bowman, all were former presidents of the club.

The next meeting will be a covered-dish luncheon at the Riverside Park Clubhouse in November.

Many members called through the morning and enjoyed renewing friendships or making new ones.

DAVID K. BROOKS		
660 Milner Building	Oil Exploration	Jackson, Mississippi
948-5722		
BROWNING & WELCH		
GEOLOGISTS		
Suite 1411, Standard Life Building		
Jackson, Mississippi 39201		
C & K PETROLEUM, INC.		
1800 Capital Towers		601/948-1111
Jackson, Mississippi 39201		
CALLON PETROLEUM CO.		
Box 1287		Natchez, Mississippi 39120
CAPITOL PRINTING & BLUE PRINT COMPANY		
330 East Rankin Street		353-2751
Jackson, Miss. 39202		
L. WICK CARY		
Room 932	Consulting Geophysicist	Box 50391
National Bank of Commerce Bldg.		New Orleans, La.
THOMAS H. CLEMENTS		
Consulting Geophysicist		
1378 Capital Towers		Phone 601/355-8724
Jackson, Mississippi 39201		
CORE LABORATORIES, INC.		
Core Analysis and Well Logging		
Laurel	New Orleans	Brewton
601/425-3394	504/524-6256	205/867-7734

GUARDIAN OIL COMPANY	
L. Graham Hughes 1636 Capital Towers	Charles S. McClelland Jackson, Mississippi
G. W. GULMON & ASSOCIATES Petroleum Geologist Natchez, Mississippi	
H. E. Hansen, Dallas	A. T. Ricci, Jr., Natchez
CLAUDE B. HAMMILL Oil Operator	
2306 First Nat'l Bank Bldg.	Houston, TX 77002
W. L. HARPER Geophysical Consultant	
115 Sterling Towers	Jackson, Miss. 39202
Phone 601-352-3339	
ALAN JACKSON	
Consulting Geologist 503 Mandalay Drive	Telephone 601-582-1192 Hattiesburg, Mississippi 39401
ROBERT R. JACOBS Petroleum Geologist	
P. O. Box 16263	Jackson, Mississippi 39206
362-4846	
JUSTISS-MEARS OIL CO., INC.	
P. O. Drawer "N"	Jena, Louisiana 71342
(318) 992-4000	
H. E. KARGES Consulting Geologist	
1812 Capital Towers Phone 352-0972	P. O. Box 1635 Jackson, Miss. 39205

GEOLOGICAL REGISTRATION NEWS

(The following is an excerpt from an article appearing in the New Orleans Geological Society bulletin. R. M. Jemison, Jr., the author, is the Past President of that Society. Ed.)

Geological Registration Bills continue to be passed by other states. The latest is Georgia which passed a bill modeled after the California and Idaho Acts and provides for certification in the specialties of engineering geology, mining geology, geohydrology and encompasses geologists in training provisions and a grandfather clause which expires July 1, 1976.

Tennessee, Ohio, Michigan, West Virginia and Pennsylvania are in various stages of proposed registration by State Legislature Acts. Maryland, Florida, North Carolina, Vermont and of course Louisiana are in the investigating or preliminary stages of presenting a registration bill. Colorado has tabled a bill, however efforts are being made to possibly revise an engineer's registration law which could affect geologists.

Most of these bills are being pushed by non-Petroleum Geologists and evidently many do not even consider Petroleum Geologists separately but would probably include them under a broad classification. It appears Engineering Geologists and Mining Geologists are more interested in registration than Petroleum Geologists. California is of course an exception.

Most states with predominantly Petroleum Geologists such as Oklahoma, Kansas, Texas and Louisiana have, to date, failed to pass or present Registration Bills due to the Opposition of the majority of geologists.

PROGRESS

Mississippi Completions - August, 1975

	Oil	Gas	Dry
Exploratory			
Eocene	1	0	12
UK	0	0	1
LK	0	0	0
Jurassic	0	0	11
Paleozoic	0	0	1
Development			
Eocene	3	0	7
UK	0	0	0
LK	0	1	0
Jurassic	0	0	1
Paleozoics	0	0	1

New Field Discoveries

Unnamed	Keary-Hurt-Harkins No. 1 Craig Sec. 79-7N-2W, Adams Co. IP/P (4624' - 4626') Wilcox 62BOPD, 144 BSWPD
---------	---

K. B. KEARY, JR. Petroleum Geologist		362-4895
439 W. Northside Dr.	Jackson, MS 39206	
WILBUR H. KNIGHT Consulting Geologist		355-1528
1017 First Nat'l Bank Bldg.	Jackson, Miss.	
HILTON L. LADNER Petroleum Geologist		354-3616
903 FNB Building	Jackson, Mississippi	
LARCO DRILLING COMPANY, INC.		
Suite 1700 Capital Towers	Jackson, Miss. 39201	Phone 355-1542
R. E. Dick LEE AND ASSOCIATES		
The Redd Building P. O. Box 5168	4443 I-55 North Jackson, MS 39216	
LOCATION SAMPLE SERVICE, INC. Bob Legate Jackson, Mississippi 932-1410		
MILLER OIL PURCHASING CO. A Division of Ergon, Inc.		
P. O. Box 1308	Jackson, Mississippi 39205	
MOON-HINES		
Robert M. Moon 1804 Capital Towers	601-354-3753 Jackson, Mississippi 39201	E. R. Hines, Jr.

WELCOME NEW MEMBERS

Bill C. Lucas – Miss. Marine Res. Council, Long Beach, Miss.
 Richard B. Meyer – Union Oil of Cal., Jackson
 Robert B. Milhalsky – Marion Corp., Mobile Ala.
 Donald B. Moore – Ala. L. & E., Mobile, Ala.
 Wm. T. Richardson – Geological Lab, Jackson
 T. J. Schwarzbach – Independent, Shreveport, La.
 Bren L. Siders – Sun Oil, Dallas, Texas
 Jack Slechto – Sun Oil, Dallas, Texas
 T. A. Tucker – Union Oil of Cal., Jackson

CRAFT PETROLEUM CO., INC.	
Wyatt E. Craft	
Exploration	Operations
CRUDE OIL PURCHASING, INC.	
P. O. Box 22660	Phone 601 – 948-5853
Jackson, Mississippi 39205	
DRESSER-ATLAS	
Jackson, Mississippi	948-5591
ENSERCH EXPLORATION COMPANY (Formerly Lone Star Producing Company) Maurice N. Birdwell District Manager	
1530 Capital Towers Jackson, Mississippi 39205	P. O. Box 219 601 969-0100
HERBER J. FERBER Consulting Geophysicist	
5456 Hartsdale Drive Jackson, Mississippi	956-4666
FLORIDA GAS EXPLORATION CO.	
1444 Capital Towers Jackson, Mississippi 39201	
WADE FORTENBERY Geologist	
P. O. Box 1183 - Natchez, Miss. Office: Hwy. 61 South	Bus. 442-6011 Res. 442-3250
JOSEPH F. FRITZ Petroleum Geologist	
Jackson, Miss.	601/354-1134
H. LEROY FULGHUM Consulting Geologist	
257 Valley Vista Drive Jackson, Mississippi 39211	601/956-6346
JAMES B. FURAH, JR. Oil Producer	
1236 Capital Towers	Jackson, Mississippi
GERMANY INVESTMENT CO.	
Norman G. Germany Dallas, Texas	E. Wilson Germany Natchez, Mississippi

FALL GOLF TOURNAMENT RESULTS

The Mississippi Geological Society golf tournament was held on Sept. 5 at Live Oaks Golf Club, with 41 members participating in golf, and approximately 10 additional members participating in fellowship only.

Results were as follows:

Low gross	Ken Pinkston (75)
2nd Low gross	Steve Dennis (76)
Low net	Mike Pryor (69)
2nd low net	R. C. Howard (70)
High gross	Jim May (145)
Least Putts	Jerry Zoble (27)
Most improved	Jerry Zoble (11)
Longest Drive	Billy Powell
Most birdies	Tom Taylor
Closest to pin	Chas. Barton
Most Pars	Jack Pryor
Most 3's	Emil Meyer
Most 4's	Dean Kebert
Most 5's	Vern Culbertson
Most 6's	Riley Hagen
Low ball foursome	Steve Dennis
	Dave Cate
	Doug Harper
	Jack Gooden

Those receiving a prize for tee shot on green No. 7 were Tom Taylor, Don Williams, Jerry Zoble, Steve Dennis, R. C. Howard, Mike Pryor, Chas. Barton, Geo. Isbell, Marvin Oxley, Bill McCullers.

GEOPHYSICAL DATABANKS, INC.		
1234 Loyola Bldg. New Orleans, La. 70112	Grady Loftin Jim Malone	Room 303 504-581-4724
CDP data available in the following area: Gulf Coast Appalachians Rockies Agents for Petroconsultants, S.A.		
GEOPHYSICAL FIELD SURVEYS, INC.		
Room 201 P. O. Box 12304, Colonial Station	Seismic Exploration 975 North Street	Jackson, MS 601/948-1580

ALABAMA MAP

The fast-moving Jurassic play in Alabama is the focal point of an updated map of the Southeast United States, showing the Jurassic trend in three states

E. C. Jacobson, 315 Mayo Bldg., Tulsa 74103, has updated his official nomenclature map of the Southeast U. S. The map shows Jurassic fields in orange, oil fields in green, gas fields in red with official names, cities townships, ranges, and counties.

Structure contours on top of Jurassic carbonate, Haynesville, or Smackover formations. Size is 42 by 48 in. with 1-in. = 8 miles. Prices: paper \$75, linen \$115. Prices fob, Tulsa. This map is a must for those watching the Southeast. Also included is an inset map of Florida downstate and the Black Warrior basin.

SCIENCE POLICY IN MISSISSIPPI GOVERNMENT

issues addressed by

GIL CARMICHAEL
Republican

CLIFF FINCH
Democrat

HENRY J. KIRKSEY
Independent

sponsored by

MISSISSIPPI ACADEMY OF SCIENCES, INC.

in cooperation with

American Chemical Society, Mississippi Section
American Institute of Professional Geologists,
Mississippi Section
Mississippi Association of Physicists
Mississippi Engineering Society
Mississippi Geological Society
Mississippi State Medical Association

Mississippi Teachers of College Mathematics
Sigma Xi Chapters at -
Mississippi State University
University of Mississippi
University of Mississippi Medical Center
University of Southern Mississippi

JACKSON HILTON HOTEL

Jackson, Mississippi

OCTOBER 24, 1975

Hospitality Hour (Cash Bar) 6:30 p.m.
Dinner and Program 7:30 p.m.

ADMISSION by advance ticket only - - - - - \$7.50 per person

The candidates for Governor of Mississippi will discuss questions of interest to the scientific community of the state. The Mississippi Academy of Sciences, as the most inclusive of Mississippi scientific societies has joined other organizations to plan this program so that we may hear discussions of interest to scientists of all disciplines.

Reservations must be received no later than October 20, 1975

Send to: Mississippi Engineering Society
555 Woodland Hills Building
3000 Old Canton Road
Jackson, MS 39216

I enclose \$ _____ for _____ ticket(s) to SCIENCE POLICY IN MISSISSIPPI GOVERNMENT (\$7.50 per person).

Make check payable to: Name _____
Mississippi Academy of Sciences, Inc. Address _____

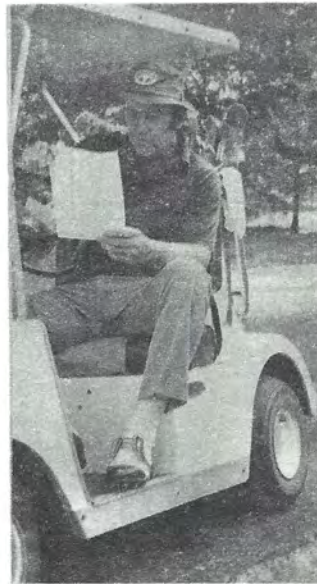
2



**STRAIGHT
SHOOTING
SOCIETY
SWATTERS**



**M.G.S.'s
'75 FALL
GOLF TOURNAMENT
PLAYERS**




M. D. (Dale) MYERS CONSULTANT GEOLOGIST Phone (601) 355-3536	
OIL WELL LOGGING, INC.	
P. O. Box 16039 - Jackson, Mississippi	354-3642
MARVIN L. OXLEY	
134 South Lamar St Jackson, Miss. 39201	601/969-4149 601/956-6446
MORTON M. PHILLIPS Petroleum Geologist	
902 Milner Bldg.	Ph. 355-3364 Jackson, Miss. 39201 Ph. 366-9665
WILLIAM H. PLAYER & ASSOCIATES P. O. Box 1383	
108 Wall St.	Natchez, MS
PRUET & HUGHES COMPANY 1111 Capital Towers Building Jackson, Mississippi 39201	
PAUL ANTHONY RADZEWICZ Oil Producer	
1829 Deposit Gty. Bldg	969-3950 Jackson, Miss. 39201
RIDGWAYS	
103 E. Pearl Street	355-4751
Jackson, Mississippi	

WOOLF & MAGEE, INC. P. O. Box 3566 Tyler, Texas 75701	
J. W. Arnold, Pres.	Allen W. Woolf, Vice Pres.
W. D. Magee, Jr., Sec.-Treas.	A. B. Irion, Drig. Supt.
Tyler, TX AC 214 562-4051 - Natchez, MS AC 601 445-4570 Rotary Rigs in Texas, Louisiana, Arkansas, Mississippi and Alabama	
ROBERT WOMACK, JR. Consulting Geologist	
1509 Standard Life Bldg.	Jackson, Miss. 39201
Phone 353-4650	
A & N PRODUCTING SERVICES, INC.	
709 Standard Life Building	P. O. Box 1669
Jackson, Mississippi 39205	
AMERICA SOUTHWEST CORP.	
Box 936, Jackson, Miss.	354-2513
Gulf Coast Drilling & Exploration	
THE ANALYSTS	
Core Analysis - Mud Logging Laurel - Ph. 649-3444	
Bunk Caldwell	Frank Howson
ATWATER, CARTER, MILLER & HEFFNER Consulting Geologists and Engineers 424 Whitney Bank Building New Orleans, Louisiana 70130 (501) 581-6527	

MISSISSIPPI GEOLOGICAL SOCIETY

P. O. Box 422
Jackson, Miss. 39205

SCHLUMBERGER WELL SERVICES	
Jackson, Mississippi	Phone 352-8589
 Seismograph Service Corporation <small>A SUBSIDIARY OF RAYTHEON COMPANY</small> P. O. Box 1590 • Tulsa, Okla. 74102 • (918) 627-3330 DISTRICT OFFICES AND DATA PROCESSING CENTERS HOUSTON • MIDLAND • DENVER • ALMA, MI.	
SOUTHERN NATURAL GAS CO.	
P. O. Box 1513	Houston, Texas
Donald R. Scherer, Dist. Geologist	622-7270
ROBERT L. THOMSEN	
1818 Capital Towers	P. O. Box 1847
Jackson, Mississippi	

NEWS

BULLETIN

mississippi geological society



VOL. XXIII, No. 3 November 1975

Core Analysis Data Used For New Log - Topic For Nov. 11 Meeting



R. J. "Granny" Granberry
M.G.S. Nov. 11 Speaker

CALENDAR

- | | |
|---------|--|
| Nov. 11 | M.G.S. Meeting
Petroleum Club, 11:30 a.m. |
| Nov. 12 | J.G.S. Meeting
Primos Northgate, 5:30 p.m. |
| Nov. 18 | Petroleum Auxiliary
Riverside Park Club, 11:30 a.m. |

CORE LAB MANAGER GRANBERRY TO DISCUSS USES OF NEW LOG IN FORMATION EVALUATION

The CoRes Log, a core analysis and resistivity evaluation, is the subject of a paper by R. J. Granberry and L. E. Tucker, managers for Core Laboratories in Louisiana. Granberry will give the paper at the Mississippi Geological Society's November 11 meeting, which will be held at 11:30 a.m. in the Jackson Petroleum Club.

Raymond J. Granberry graduated in 1940 from Louisiana State University with a B.S. degree in Geology, after which he did graduate work at the same institution for an additional year before joining Core Laboratories, Inc. in the fall of 1941. He became Manager of Core Lab's Corpus Christi District in 1947, transferred to a similar position in the Houston District in 1955, and moved to Louisiana as Lafayette District Manager in 1956. A long-time Vice President and Director of Core Lab, he has been Manager of the company's Gulf Coast Division, with headquarters in Lafayette, Louisiana, since 1969.

Larry E. Tucker graduated from Northeast Louisiana State University in 1955 with a B.S. degree in Geology. He joined Core Laboratories, Inc. in the summer of 1956 in the company's Lafayette District well logging operations. He was in charge of Core Lab's Houma, Louisiana, core analysis laboratory from 1962 until 1967, when he moved to the position of Sales Representative in New Orleans. He was promoted to Manager of Core Lab's Southeast District, with headquarters in New Orleans, on October 1, 1972.

MEETING RESERVATIONS REQUESTED

T. C. Rader is making a strong request for your reservations to the M.G.S. meeting November 11. This luncheon will be held at the Petroleum Club. *T.C.* has arranged for the lines to be opened at 11:30 a.m., so be sure to call his office 948-4128.

MISSISSIPPI GEOLOGICAL SOCIETY

OFFICERS

Jerry E. Zoble	President	Consultant
Elwood Ruhl	1st Vice Pres.	Florida Gas Exp.
Jim White	2nd Vice Pres.	Marr Co.
David Cate	Secretary	Florida Gas Exp.
Sarah Childress	Treasurer	Miss. Geo. Survey
W. E. Taylor	Past President	Consultant

DELEGATES

J. B. Goldman, Jr.	A.A.P.G.	Florida Gas Exp.
Philip R. Reeves	A.A.P.G.	Cities Service Oil
Kevin Cahill	G.C.A.G.S.	Shenandoah Oil

COMMITTEES AND CHAIRMEN

AAPG Membership	J. B. Goldman, Jr. & Philip R. Reeves
AAPG Public Information	Verne L. Culbertson
Continuing Education	Chuck Erwin
Entertainment	T. C. Rader
Golf	James L. Cummings
Job Placement	Larry Boland
Nomenclature	James Bollman
Program	John D. Myers
Projection	Ronald Tisdale
Publicity	Verne L. Culbertson

NEWS BULLETIN STAFF

Editor	Bill McGee
Asst. Editor	Les Aultman
Advertising Mgr.	Paul Day
Petroleum Auxiliary	Virginia Force
Geophysics	Don Smith
Land	Rip Mason
Photographer	David Williamson
Progress	Don Biel

CRUDE OIL PURCHASING, INC.

P. O. Box 22660 Phone 601 - 948-5853
Jackson, Mississippi 39205

DRESSER-ATLAS

Jackson, Mississippi 948-5591

JOB PLACEMENT COMMITTEE NOW ACTIVE

As noted earlier by *Jerry Zoble*, M.G.S. is providing a new service for its members through the Job Placement Committee. Chaired by *Larry Boland*, this committee can prove useful to prospective employers as well as to prospective employees. Liason is being sought with corresponding committees in other societies in order to provide widest coverage. Larry stresses that every situation, advertisement, or inquiry, will be handled with discretion and in strictest confidence. For further information, contact *Larry Boland*, 353-2705.

PRESIDENT'S NOTES:

Well, another convention has come and gone, and in my opinion the 25th Anniversary Celebration was the best one ever! My congratulations and thanks to all those people responsible for this successful endeavor.

You will recall that we voted at the barbecue on the meeting place and on the future of the Continuing Education Program. The majority of you indicated your desire to try the Continuing Education one more time and the Petroleum Club was the choice of most of you as a meeting place. Food prices have risen so drastically that we were concerned about what type of response we might have if the meals ran over \$5.00. The executive committee decided to schedule several luncheon meetings, therefore, thus keeping the cost at \$4.00 per man.

Chuck Erwin with *Enserch* (formerly *Lone Star*) has graciously agreed to chair the Continuing Education Committee and we should be hearing from him very soon.

Numerous members have approached me on the possibility of a photo-directory this year, hopefully, in conjunction with the other professional societies. *Marshall Kern*, *Marr Company*, has agreed to look into this matter and we should have something concrete in time for the next bulletin.

Jerry Zoble

OPINON POLL RESULTS

An opinion poll concerning the monthly meeting location and a continuing education program was taken by the Society's Board of Directors at the September barbecue. A total of 73 members expressed their opinion on these issues .

The first request was for members preference on a location for the monthly meetings. Results were:

Capital City Petroleum Club	37
Primos Northgate	27
Patio Club	4
Other Locations	5

The second request contained three parts. Members were asked whether or not they wanted a continuing education program this year. Results Were: Yes, 52; No, 5; No Opinion, 16. Those voting yes were then asked to indicate if they preferred a program devoted solely to geology or to one involving a related field in either Reservoir Engineering for Geologists, Land Techniques for Geologists, or Geophysics for Geologists. Results were (more than one vote allowed): Geology, 34; Related Fields, 38. Finally, those voting for the related fields were asked for their preference of subjects. Results were (multiple votes allowed): Geophysics, 24; Reservoir Engineering, 22; and Land, 19.

The Board is grateful for the response to the poll and the results have been carefully considered. Most monthly meetings will be at the Capital City Petroleum Club but all members are urged to make reservations for the meetings to avoid last minute confusion. There is a good possibility a continuing education program can be held later in the society year but further study is necessary before definite plans are announced. The membership will be informed in later bulletins.

PETROLEUM AUXILIARY NEWS

The second meeting of the club year of the Petroleum Auxiliary will be November 18, at 11:30 a.m. This will be a covered dish luncheon at the Riverside Park Club. Mrs. Larry Wood will chair this event.

ENSERCH EXPLORATION COMPANY (Formerly Lone Star Producing Company) Maurice N. Birdwell District Manager	
1530 Capital Towers Jackson, Mississippi 39205	P. O. Box 219 601 969-0100
HERBERT J. FERBER Consulting Geophysicist	
5456 Hartsdale Drive Jackson, Mississippi	956-4666

DISTINGUISHED LECTURER TO SPEAK TO J.G.S.

The Jackson Geophysical Society's guest speaker on November 12 will be Samuel J. Allen, President and Director of Geophysical Systems Corporation. Mr. Allen is a Distinguished Lecturer on S.E.G.'s 1975 Tour; his paper is titled "Improving Geophysical Visions". The meeting, to be at Primos Northgate, will start at 5:30 p.m. with a happy hour, followed by a 6:30 p.m. dinner.

FLORIDA GAS EXPLORATION CO.	
1444 Capital Towers Jackson, Mississippi 39201	
WADE FORTENBERY Geologist	
P. O. Box 1183 - Natchez, Miss. Office: Hwy. 61 South	Bus. 442-6011 Res. 442-3250
JOSEPH F. FRITZ Petroleum Geologist	
Jackson, Miss.	601/354-1134
H. LEROY FULGHUM Consulting Geologist	
257 Valley Vista Drive Jackson, Mississippi 39211	601/956-6346
JAMES B. FURRAH, JR. Oil Producer	
1236 Capital Towers	Jackson, Mississippi
GERMANY INVESTMENT CO.	
Norman G. Germany Dallas, Texas	E. Wilson Germany Natchez, Mississippi

CORES LOG - A CORE ANALYSIS AND RESISTIVITY EVALUATION LOG

by

R. J. Granberry and L. E. Tucker
Core Laboratories, Inc.

ABSTRACT

Many low to medium porosity reservoirs exhibit wide variations in true resistivity due to complex lithologies and high sensitivity to formation factor. These reservoirs are frequently cored conventionally in order to obtain more reliable reservoir information for proper completion, evaluation, and secondary recovery applications.

A method is presented for expressing measured core analysis porosity and other formation core properties in terms of resistivity to permit a direct comparison with the recorded log resistivity. A resistivity curve representing 100% formation water saturation (R_o) is calculated from core analysis porosity values, using appropriate formation factor data. This curve is plotted on a logarithmic resistivity scale for direct comparison with the deep induction log or deep lateral curve. The relative position of the two curves permits direct reading of the formation water saturation.

Minimum productive resistivity, R_{mp} , has been defined as the minimum true resistivity value a formation must have for hydrocarbon production with little or no water cut. An R_{mp} curve calculated from core data, when correlated with the log resistivity curves of the same interval, readily reveals the nature and extent of recorded log resistivity changes whether due to porosity, variation of nonproducable water, an increase in formation water saturation in a transition zone, or a water contact.

An improved means of depth correlation between conventional core and log depths is also provided by direct comparison of the calculated R_o curve and the shallow resistivity log curve with its greater vertical resolution and lithological detail.

Examples of CoRes Logs are cited for the Smackover formation in the Mississippi-Alabama-Florida trend, but the principle is applicable to any conventionally cored formation using a logarithmic scale for the resistivity log.

GEOPHYSICAL DATABANKS, INC.	
1234 Loyola Bldg. New Orleans, La. 70112	Room 303 504-581-4724
Grady Loftin Jim Malone	
CDP data available in the following area:	
Gulf Coast Appalachians Rockies	
Agents for Petroconsultants, S.A.	

POSER

Show how a random drilling "expert" can drill 38 wells in such a way that there are 12 rows of wells with 7 wells in each row.
(Answer in next publication.)

**CHASE MANHATTAN PREDICTS \$770,000,000,000
INVESTMENT REQUIREMENT FOR INDUSTRY**

(The following is a summary of A.A.P.G.'s Background Paper No. 4, "How Much Oil - How Much Investment." Contact Verne Culbertson for the text. Ed.)

Studies conducted by the Chase Manhattan Bank of New York City beginning as early as 1950 indicated clearly that an energy shortage in the United States was eventually in prospect if corrective forces were not brought into play. The future supply of energy cannot possibly be adequate unless a sufficient investment is made. The relationship between investment and the supply of energy is an elementary principle, but nevertheless, it is one that is misunderstood.

For several decades, Chase Manhattan has conducted continuing studies with the objective of measuring the capital and exploration costs of carrying on the search for petroleum. A consistent relationship has been demonstrated between the financial input and the amount of petroleum found and developed. These studies indicate the worldwide industry will need to invest at least \$400 billion for capital and exploratory purposes between 1970 and 1985 if it hopes to find 600 billion barrels of oil between 1970 and 1985. In addition, an investment of \$370 billion will be required for other essential purposes - refineries, tankers, pipelines, and costly equipment needed to maintain environmental standards. This \$770 billion (1970 dollars) of capital and exploratory investment required is nearly three times the actual investment in the preceding fifteen years before considering inflation.

The source of these funds in part will be from external sources such as the capital markets, and in part through governmental provisions providing for capital recovery (unless they are continued to be removed by governmental action). But approximately 40 percent, or \$460 billion of these financial needs must come from profits. It should be further noted that present rates of inflation would approximately double these investment requirements.

The petroleum industry will not be able to generate the money it will need in the years ahead if governments continue to ignore the financial realities involved and act in various ways to inhibit the process of capital formation. There are no financial short cuts - all costs associated with providing sufficient energy resources must be paid.

GEOPHYSICAL FIELD SURVEYS, INC.		
Seismic Exploration		
Room 201	975 North Street	Jackson, MS
P. O. Box 12304, Colonial Station		601/948-1580
GUARDIAN OIL COMPANY		
L. Graham Hughes	Charles S. McClelland	
1636 Capital Towers	Jackson, Mississippi	
G. W. GULMON & ASSOCIATES		
Petroleum Geologist		
Natchez, Mississippi		
H. E. Hansen, Dallas	A. T. Ricci, Jr., Natchez	
CLAUDE B. HAMMILL		
Oil Operator		
2306 First Nat'l Bank Bldg.	Houston, TX 77002	

W. L. HARPER		
Geophysical Consultant		
115 Sterling Towers	Jackson, Miss. 39202	
Phone 601-352-3339		
GEORGE H. ISBELL, JR.		
Geologist		
1240 Capital Towers	Ph: (601) 948-4881	
ALAN JACKSON		
Consulting Geologist		
503 Mandalay Drive	Telephone 601-582-1192	
Hattiesburg, Mississippi 39401		
ROBERT R. JACOBS		
Petroleum Geologist		
P. O. Box 16263	Jackson, Mississippi 39206	
362-4846		
JUSTISS-MEARS OIL CO., INC.		
P. O. Drawer "N" Jena, Louisiana 71342		
(318) 992-4000		
H. E. KARGES		
Consulting Geologist		
1812 Capital Towers	P. O. Box 1635	
Phone 352-0972	Jackson, Miss. 39205	
K. B. KEARY, JR.		
Petroleum Geologist		
439 W. Northside Dr.	362-4895	
Jackson, MS 39206		
WILBUR H. KNIGHT		
Consulting Geologist		
1017 First Nat'l Bank Bldg.	Jackson, Miss. 355-1528	
LARCO DRILLING COMPANY, INC.		
Suite 1700 Jackson, Miss. 39201		
Capital Towers	Phone 355-1542	
R. E. Dick LEE AND ASSOCIATES		
The Redd Building	4443 I-55 North	
P. O. Box 5168	Jackson, MS 39216	
LOCATION SAMPLE SERVICE, INC.		
Bob Legate		
Jackson, Mississippi		
932-1410		

PROGRESS

Mississippi Completions - September, 1975

Exploratory	Oil	Gas	Dry
Eocene	1	0	16
UK	0	0	3
LK	0	0	1
Jurassic	0	0	3
Paleozoic	0	0	3
Development	Oil	Gas	Dry
Eocene	1	0	2
UK	0	0	1
LK	0	1	0
Jurassic	0	0	0
Paleozoi	0	0	1

MILLER OIL PURCHASING CO. A Division of Ergon, Inc.	
P. O. Box 1308	Jackson, Mississippi 39205
MOON-HINES	
Robert M. Moon 1804 Capital Towers	E. R. Hines, Jr. 601-354-3753 Jackson, Mississippi 39201
M. D. (Dale) MYERS CONSULTANT GEOLOGIST Phone (601) 355-3536	
OIL WELL LOGGING, INC.	
P. O. Box 16039 - Jackson, Mississippi	354-3642
MARVIN L. OXLEY	
134 South Lamar St Jackson, Miss. 39201	601/969-4149 601/956-6446
MORTON M. PHILLIPS Petroleum Geologist	
902 Milner Bldg.	Ph. 355-3364 Jackson, Miss. 39201 Ph. 366-9665

EXPLORATION GEOLOGY FOR GEOPHYSICISTS


The fourth annual short course for geophysicists on exploration geology will be held in Houston from January 5 through January 16, 1976. This course is conducted by the University of Houston. Because of the excellent response to last year's course, arrangements have been made for two simultaneous sessions at the Sheraton Inn, northwest Houston.

The course is designed primarily to fulfill the needs of geophysicists whose professional training was not geological, but it is also appropriate as a refresher course for those trained as geologists but who have subsequently concentrated on geophysical methods of exploration. Its purpose is to help geophysicists develop a deeper understanding of the nature of geologists' work, as well as its usefulness and limitations, and to enable them to communicate more effectively with geologists. Emphasis will be placed on those aspects of geology that significantly affect the occurrence of oil and gas and the means by which geological data are used to explore for these resources. At least one session will be devoted to petroleum economics.

The lecturers for the course are recognized experts in their areas of specialization, and most have had extensive experience in the petroleum industry. They have been selected not only for their technical expertise, but also for their demonstrated effectiveness as lecturers and teachers.

Course brochures, application forms, and additional information may be obtained by contacting

Dr. Carl E. Norman
Department of Geology
University of Houston
Houston, Texas 77004
Telephone: (713) 749-3870

WILLIAM H. PLAYER & ASSOCIATES P. O. Box 1383 108 Wall St. Natchez, MS	
PRUET & HUGHES COMPANY 1111 Capital Towers Building Jackson, Mississippi 39201	
PAUL ANTHONY RADZEWICZ Oil Producer 1829 Deposit Gty. Bldg 969-3950 Jackson, Miss. 39201	
RIDGWAYS 103 E. Pearl Street Jackson, Mississippi 355-4751	
SCHLUMBERGER WELL SERVICES Jackson, Mississippi Phone 352-8589	
 Seismograph Service Corporation A SUBSIDIARY OF RAYTHEON COMPANY P. O. Box 1590 • Tulsa, Okla. 74102 • (918) 627-3330 DISTRICT OFFICES AND DATA PROCESSING CENTERS HOUSTON • MIDLAND • DENVER • ALMA, MI.	
SOUTHERN NATURAL GAS CO. P. O. Box 1513 Houston, Texas Donald R. Scherer, Dist. Geologist 622-7270	
ROBERT L. THOMSEN 1818 Capital Towers Jackson, Mississippi P. O. Box 1847	
WOOLF & MAGEE, INC. P. O. Box 3566 Tyler, Texas 75701 J. W. Arnold, Pres. Allen W. Woolf, Vice Pres. W. D. Magee, Jr., Sec.-Treas. A. B. Irion, Drig. Supt. Tyler, TX AC 214 562-4051 - Natchez, MS AC 601 445-4570 Rotary Rigs in Texas, Louisiana, Arkansas, Mississippi and Alabama	
ROBERT WOMACK, JR. Consulting Geologist 1509 Standard Life Bldg. Jackson, Miss. 39201 Phone 353-4650	
A & N PRODUCING SERVICES, INC. 709 Standard Life Building Jackson, Mississippi 39205 P. O. Box 1669	
AMERICA SOUTHWEST CORP. Box 936, Jackson, Miss. 354-2513 Gulf Coast Drilling & Exploration	
THE ANALYSTS Core Analysis - Mud Logging Laurel - Ph. 649-3444 Bunk Caldwell Frank Howson	
ATWATER, CARTER, MILLER & HEFFNER Consulting Geologists and Engineers 424 Whitney Bank Building New Orleans, Louisiana 70130 (501) 581-6527	

C & K PETROLEUM, INC.		
1800 Capital Towers	Jackson, Mississippi 39201	601/948-1111
CALLON PETROLEUM CO.		
Box 1287	Natchez, Mississippi	39120
CAPITOL PRINTING & BLUE PRINT COMPANY		
330 East Rankin Street	Jackson, Miss. 39202	353-2751
L. WICK CARY		
Room 932	Consulting Geophysicist	Box 50391
National Bank of Commerce Bldg.		New Orleans, La.
THOMAS H. CLEMENTS		
Consulting Geophysicist		
1378 Capital Towers	Jackson, Mississippi 39201	Phone 601/355-8724
CORE LABORATORIES, INC.		
Core Analysis and Well Logging		
Laurel		New Orleans
601/425-3394		504/524-6256
Jackson		Mobile
601/932-1492		205/456-2271
CRAFT PETROLEUM CO., INC.		
Wyatt E. Craft		
Exploration		Operations

MISSISSIPPI GEOLOGICAL SOCIETY
P. O. Box 422
Jackson, Miss. 39205

DAVID K. BROOKS		
660 Milner Building	Oil Exploration	Jackson, Mississippi
	948-5722	
BROWNING & WELCH		
GEOLOGISTS		
Suite 1411, Standard Life Building		
Jackson, Mississippi 39201		

NEWS

BULLETIN

mississippi geological society



VOL. XXIII, No. 4, December, 1975

DECEMBER 9 MEETING TOPIC: EXPLORATION FRONTIERS OF NORTH AMERICA

SUNOCO'S BLANTON TO ADDRESS EVENING MEETING

The Arctic is the last opportunity for the Continental United States to develop a modest degree of "energy self sufficiency", according to S. L. Blanton of Sunoco's North American Exploration and Production Group.

The total outlook of the offshore east coast is approximately five to seven billion barrels recoverable oil and gas (computed on a six to one ratio). This means that the entire east coast's offshore recoverable reserves will be approximately one-half Prudhoe Bay field (+ 12.5 billion barrels recoverable reserves).

Two areas offer the greatest potential: the Gulf of Alaska and the Bering Shelf. The geology of either is fantastic.

The geology of the Bering Shelf is perhaps the least known. Mr. Blanton will devote the major portion of his discussion to the geology of this frontier area.

PETROLEUM CLUB LOCATION FOR DEC. 9 MEETING

T. C. Rader has scheduled the next M.G.S. meeting for Dec. 9 at the Petroleum Club. An evening meeting, this one starts at 6 p.m. with a cocktail hour. Dinner at 7 p.m. will feature spaghetti and wine.

T. C. reports an attendance figure for the November meeting of 55. Considering the number of Jacksonians in this society, attendance was very high. The response for reservation requests could have been better; T. C. could guarantee reservations for only 50, which was the reason for the delay in seating arrangements.

Please make and keep reservations at these meetings. The guarantees the society has to make could result in money losses if reservations are not kept.

T. C.'s phone number is 948-4128. Call your reservations in no later than noon, Monday, December 8.

MISSISSIPPI GEOLOGICAL SOCIETY

OFFICERS

Jerry E. Zoble	President	Consultant
Elwood Ruhl	1st Vice Pres.	Florida Gas Exp.
Jim White	2nd Vice Pres.	Marr Co.
David Cate	Secretary	Florida Gas Exp.
Sarah Childress	Treasurer	Miss. Geo. Survey
W. E. Taylor	Past President	Consultant

DELEGATES

J. B. Goldman, Jr.	A.A.P.G.	Florida Gas Exp.
Philip R. Reeves	A.A.P.G.	Cities Service Oil
Kevin Cahill	G.C.A.G.S.	Shenandoah Oil

COMMITTEES AND CHAIRMEN

AAPG Membership	J. B. Goldman, Jr. & Philip R. Reeves Verne L. Culbertson
AAPG Public Information	Chuck Erwin
Continuing Education	T. C. Rader
Entertainment	James L. Cummings
Golf	Larry Boland
Job Placement	James Bollman
Nomenclature	John D. Myers
Program	Ronald Tisdale
Projection	Verne L. Culbertson
Publicity	
NEWS BULLETIN STAFF	

Editor	Bill McGee
Asst. Editor	Les Aultman
Advertising Mgr.	Paul Day
Petroleum Auxiliary	Virginia Force
Geophysics	Don Smith
Land	Rip Mason
Photographer	David Williamson
Progress	Don Biel

FLORIDA GAS EXPLORATION CO.

1444 Capital Towers
Jackson, Mississippi 39201

WADE FORTENBERY Geologist

P. O. Box 1183 - Natchez, Miss. Bus. 442-6011
Office: Hwy. 61 South Res. 442-3250

JOB PLACEMENT NEWS

Larry Boland reports a very quiet month for his Job Placement Committee. He has requested, however, that the following notice be put in this number of the Bulletin.

Experienced petroleum geologists with broad background in basin appraisal and resource evaluation, Gulf Coast experience desirable, Ph.D. not necessary, salary competitive, Denver location.

PRESIDENT'S NOTES

Our first noon meeting of the year was highly successful. We had 55 people attend and I saw some faces I haven't seen for some time at any of our regular evening meetings. I was very encouraged. For those of you who are a little upset about missing your "free-pass" out for an evening, I am happy to announce that our December meeting is a night meeting.

We were all saddened by the death of Ned Phillips, a long time member of the society and an old friend of many of us. Your Executive Committee took the liberty of sending flowers in the name of the society. Ned was a good friend and will be missed!

Happy holidays!

Jerry Zoble

JOSEPH F. FRITZ

Petroleum Geologist

Jackson, Miss.

601/354-1134

PETROLEUM AUXILIARY NEWS

There was little thought of diets at the Covered Dish Luncheon held at Riverside Park Clubhouse at the November meeting of Petroleum Auxiliary.

Each member brought one of her favorite dishes and prepared a recipe card that was on display beside each dish. The recipes will be compiled and made into a yearly cook book for each member.

Many guests and members shared good food and visiting.

A real treat was given to us by one of our own members, Mrs. Clifton (Helen) Bryant.

One of Helen's many talents and hobbies is preparing her own wool and dyeing it and weaving beautiful articles, such as spreads, shawls, etc.

She showed us the techniques of using a spindle in making her yarn and also, her spinning wheel.

She spoke of her many ways of dyeing the wool and says she uses a great many plants and leaves from the woods around Jackson.

Helen is well known in many creative areas and preforms and shows her talents in a great many festivals and gatherings.

Hostesses were Mrs. Larry Wood, Chairman, Mrs. Miley Craft, Mrs. Don Williams, Mrs. Claude Wansley, Mrs. Jim Stewart and Mrs. William L. Word.

Our next meeting will be held December 10th, from 3 p.m. to 6 p.m. at the condominium of Mrs. Charles Hayes. This will be a sherry party, with Mrs. Morton Phillips as chairwoman.

H. LEROY FULGHUM Consulting Geologist 257 Valley Vista Drive Jackson, Mississippi 39211 601/956-6346	
JAMES B. FURRH, JR. Oil Producer 1236 Capital Towers Jackson, Mississippi	
GERMANY INVESTMENT CO. Norman G. Germany Dallas, Texas E. Wilson Germany Natchez, Mississippi	
GEOPHYSICAL DATABANKS, INC. 1234 Loyola Bldg. New Orleans, La. 70112 Room 303 504-581-4724 Grady Loftin Jim Malone CDP data available in the following area: Gulf Coast Appalachians Rockies Agents for Petroconsultants, S.A.	
GUARDIAN OIL COMPANY L. Graham Hughes 1636 Capital Towers Charles S. McClelland Jackson, Mississippi	
G. W. GULMON & ASSOCIATES Petroleum Geologist Natchez, Mississippi H. E. Hansen, Dallas A. T. Ricci, Jr., Natchez	
CLAUDE B. HAMMILL Oil Operator 2306 First Nat'l Bank Bldg. Houston, TX 77002	
W. L. HARPER Geophysical Consultant 115 Sterling Towers Jackson, Miss. 39202 Phone 601-352-3339	
GEORGE H. ISBELL, JR. Geologist 1240 Capital Towers Ph: (601) 948-4881	
ALAN JACKSON Consulting Geologist 503 Mandalay Drive Telephone 601-582-1192 Hattiesburg, Mississippi 39401	
ROBERT R. JACOBS Petroleum Geologist P. O. Box 16263 Jackson, Mississippi 39206 362-4846	
JUSTISS-MEARS OIL CO., INC. P. O. Drawer "N" Jena, Louisiana 71342 (318) 992-4000	
H. E. KARGES Consulting Geologist 1812 Capital Towers Phone 352-0972 P. O. Box 1635 Jackson, Miss. 39205	
K. B. KEARY, JR. Petroleum Geologist 439 W. Northside Dr. Jackson, MS 39206 362-4895	
WILBUR H. KNIGHT Consulting Geologist 1017 First Nat'l Bank Bldg. Jackson, Miss. 355-1528	
LARCO DRILLING COMPANY, INC. Suite 1700 Capital Towers Jackson, Miss. 39201 Phone 355-1542	
R. E. Dick LEE AND ASSOCIATES The Redd Building P. O. Box 5168 4443 I-55 North Jackson, MS 39216	

SEISMIC INTERPRETATION SEMINAR TO BE HELD IN NEW ORLEANS

A couple of dates to remember are January 12th and 13th of 1976. These are the dates for the newest S.G.S. Continuing Education Seminar to be held at the Tulane Medical School Auditorium in New Orleans. Mr. Roy O. Lindseth from Calgary will conduct two 3-hour sessions on how to get the most out of seismic data and interpretations. He will show examples of how seismic, stratigraphic, and geologic data can be blended together. Roy is a well known geophysicist and speaker and should be well-remembered by those around a few years back for his course "Recent Advances in Digital Processing". His new course is a logical continuation devoted less to data processing and more to interpretation.

MILLER OIL PURCHASING CO. A Division of Ergon, Inc. P. O. Box 1308 Jackson, Mississippi 39205	
MOON-HINES Robert M. Moon 1804 Capital Towers 601-354-3753 E. R. Hines, Jr. Jackson, Mississippi 39201	
M. D. (Dale) MYERS CONSULTANT GEOLOGIST Phone (601) 355-3536	
OIL WELL LOGGING, INC. P. O. Box 16039 - Jackson, Mississippi 354-3642	
MARVIN L. OXLEY 134 South Lamar St Jackson, Miss. 39201 601/969-4149 601/956-6446	

PROGRESS

Mississippi Completions - October, 1975

EXPLORATORY	Oil	Gas	Dry
Eocene	0	0	14
UK	0	0	3
LK	0	0	0
Jurassic	0	0	5
Paleozoic	0	0	1
DEVELOPMENT	Oil	Gas	Dry
Eocene	2	0	3
UK	2	0	0
LK	1	1	1
Jurassic	0	0	0
Paleozoic	0	1	0

BACKGROUNDS OF AAPG CANDIDATES

TULSA, Okla., Nov. 6 -- Two Gulf Coast geologists will run for president-elect of the American Association of Petroleum Geologists in an election to be held in the spring. Frank W. Harrison, Jr., a consulting geologist and independent oil operator from Lafayette, La., will oppose Edd R. Turner, Getty Oil, Houston. The successful candidate will serve as president-elect for one year and assume the presidency in July, 1977. These and other candidates for AAPG offices were announced by John E. Kilkenny, current president.

Harrison is a native of Bastrop, La., and began his career in the oil industry with Union Producing Company in Jackson, Miss. and New Orleans after graduating from Louisiana State University in 1950. He served a tour in the U. S. Army while on leave from Union Producing and subsequently held geological and management positions with Seaboard Oil Co. in New Orleans and with Trans-Tex Drilling Co. and American Natural Gas Production Co. in Lafayette before entering private practice in 1959.

Turner is a Houston native and a 1943 graduate of the Univ. of Texas at Austin. He served in the U.S. Army Corps of Engineers until 1946, when he joined Union Producing Co. in Beeville, Texas. He went to work for Humble (now Exxon Co., USA) in Houston in 1947, transferring to New Orleans in 1948 where he worked until 1955 when he left Humble to join Getty Oil. Since then, he has held various geological and management positions with Getty in Houston, except for a two-year tour in the home office in Los Angeles.

Candidates for vice-president are Ralph L. Miller and Gordon H. Wood, Jr., both with the United States Geological Survey, Reston, Va.


Miller was born in Bethlehem, Pa. and graduated from Harverford College and Columbia Univ. He has had various assignments with the USGS both in this country and internationally, and is currently staff geologist, Office of International Geology. Wood, a native of Poteau, Okla., and a graduate of the Univ. of New Mexico, began his career with the U.S. Coast and Geodetic Survey in 1942, joining the U.S. Geological Survey in 1942, joining the U.S. Geological Survey in 1944. He is currently chief, Branch of Coal Resources.

George S. Galbraith, an independent geologist in Abilene, Tex., will oppose Theodore (Ted) Off, president of Ojai Oil Co. in Ventura, Calif., for the position of treasurer.

Galbraith, a native of Memphis, Tenn. and a graduate of Mississippi State Univ., began his career as a geologist for General Crude Oil Co. in Abilene, later serving as exploration manager for Lamar H. Moore Drilling Co. before entering business for himself in 1958. Off was born in Los Angeles and is a Stanford graduate. He served two years in the U.S. Navy and worked briefly for Shell Oil Co. prior to joining Ojai Oil Co. as a geologist in 1954, advancing to the presidency in 1968.

Successful candidates will assume their offices on July 1, 1976. The AAPG is the world's largest geological organization, with more than 17,000 members in all 50 states and 80 countries. It is headquartered in Tulsa, Okla.

MORTON M. PHILLIPS Petroleum Geologist		
902 Milner Bldg.	Ph. 355-3364	Jackson, Miss. 39201
WILLIAM H. PLAYER & ASSOCIATES P. O. Box 1383		
108 Wall St.		Natchez, MS
PRUET & HUGHES COMPANY 1111 Capital Towers Building Jackson, Mississippi 39201		
PAUL ANTHONY RADZEWICZ Oil Producer		
1829 Deposit Gty. Bldg	969-3950	Jackson, Miss. 39201
RIDGWAYS		
103 E. Pearl Street		355-4751
Jackson, Mississippi		
SCHLUMBERGER WELL SERVICES		
Jackson, Mississippi		Phone 352-8589

 Seismograph Service Corporation <small>A SUBSIDIARY OF RAYTHEON COMPANY</small>	
<small>P. O. Box 1590 • Tulsa, Okla. 74102 • (918) 627-3330 DISTRICT OFFICES AND DATA PROCESSING CENTERS HOUSTON • MIDLAND • DENVER • ALMA, MI.</small>	
SOUTHERN NATURAL GAS CO.	
P. O. Box 1513	Houston, Texas
Donald R. Scherer, Dist. Geologist	622-7270
ROBERT L. THOMSEN	
1818 Capital Towers	P. O. Box 1847
Jackson, Mississippi	
WOOLF & MAGEE, INC.	
P. O. Box 3566 Tyler, Texas 75701	
J. W. Arnold, Pres.	Allen W. Woolf, Vice Pres.
W. D. Magee, Jr., Sec.-Treas.	A. B. Irion, Drig. Supt.
Tyler, TX AC 214 562-4051 — Natchez, MS AC 601 445-4570	
Rotary Rigs in Texas, Louisiana, Arkansas, Mississippi and Alabama	
ROBERT WOMACK, JR.	
Consulting Geologist	
1509 Standard Life Bldg.	Jackson, Miss. 39201
Phone 353-4650	

WELCOME NEW MEMBERS

ANDERSON, EARL B.
Ward Exploration Co.
Jackson, MS 39204

BERRY, HOWARD E.
Howard Berry construction Co.
Jackson, MS 39206

BRITT, ROBERT E.
Florida Gas Expl. Co.
Jackson, MS

CLARK, DONALD L.
Midroc Oil Co.
Dallas, TX

COWAN, MARVIN F.
Cities Service Oil Co.
Jackson, MS 39211

FISKE, RONALD C.
Cities Service Oil Co.
Jackson, MS 39211

HARPER, DOUG
IMCO Services
Jackson, MS 39201

HAVARD, DEBORAH
Student - USM
Hattiesburg, MS

HOWARD, WIN S.
R. L. Burns Corp.
Jackson, MS 39201

JACKSON, JAMES B.
Student - USM
Hattiesburg, MS

JENSEN, ERIC B.
Cities Service Oil Co.
Jackson, MS 39206

KING, SIMEON ANN
Student - USM
Hattiesburg, MS

MORRIS, J. P. "LEFTY"
Vaughn Petroleum Co.
Dallas, TX

MORRISON, CHARLES A.
Cities Service Oil Co.
Jackson, MS 39206

PHILLIPS, RAY C.
Geophysical Field Surveys
Jackson, MS 39211

PINKSTON, KENNETH E.
Lohman Johnson Drlg. Co.
Brandon, MS 39042

SWOGETINSKY, M.B.
Dresser Magcobar
Jackson, MS 39201

WHETSTONE, ELLEN E.
Student - USM
Hattiesburg, MS

WOODS, HARRY K.
Waterways Experiment Station
Vicksburg, MS 39180

A & N PRODUCTING SERVICES, INC.	
709 Standard Life Building	P. O. Box 1669
Jackson, Mississippi 39205	
AMERICA SOUTHWEST CORP.	
Box 936, Jackson, Miss.	354-2513
Gulf Coast Drilling & Exploration	
THE ANALYSTS	
Core Analysis - Mud Logging Laurel - Ph. 649-3444	
Bunk Caldwell	Frank Howson

ATWATER, CARTER, MILLER & HEFFNER	
Consulting Geologists and Engineers 424 Whitney Bank Building New Orleans, Louisiana 70130 (501) 581-6527	
DAVID K. BROOKS	
660 Milner Building	Oil Exploration Jackson, Mississippi 948-5722
BROWNING & WELCH	
GEOLOGISTS Suite 1411, Standard Life Building Jackson, Mississippi 39201	

C & K PETROLEUM, INC.	
1800 Capital Towers Jackson, Mississippi 39201	601/948-1111
CALLON PETROLEUM CO.	
Box 1287	Natchez, Mississippi 39120
CAPITOL PRINTING & BLUE PRINT COMPANY	
330 East Rankin Street Jackson, Miss. 39202	353-2751
L. WICK CARY	
Room 932 National Bank of Commerce Bldg.	Consulting Geophysicist Box 50391 New Orleans, La.
THOMAS H. CLEMENTS	
1378 Capital Towers Jackson, Mississippi 39201	Consulting Geophysicist Phone 601/355-8724
CORE LABORATORIES, INC.	
Laurel 601/425-3394 Jackson 601/932-1492	Core Analysis and Well Logging New Orleans 504/524-6256 Mobile 205/456-2271
CRAFT PETROLEUM CO., INC.	
Wyatt E. Craft	
Exploration	Operations

CRUDE OIL PURCHASING, INC.	
P. O. Box 22660	Phone 601 - 948-5853
Jackson, Mississippi 39205	
DRESSER-ATLAS	
Jackson, Mississippi	948-5591
ENSERCH EXPLORATION COMPANY (Formerly Lone Star Producing Company)	
Maurice N. Birdwell District Manager	
1530 Capital Towers Jackson, Mississippi 39205	P. O. Box 219 601 969-0100
HERBERT J. FERBER	
5456 Hartsdale Drive	Consulting Geophysicist 956-4666
Jackson, Mississippi	

MISSISSIPPI GEOLOGICAL SOCIETY
P. O. Box 422
Jackson, Miss. 39205

NEWS

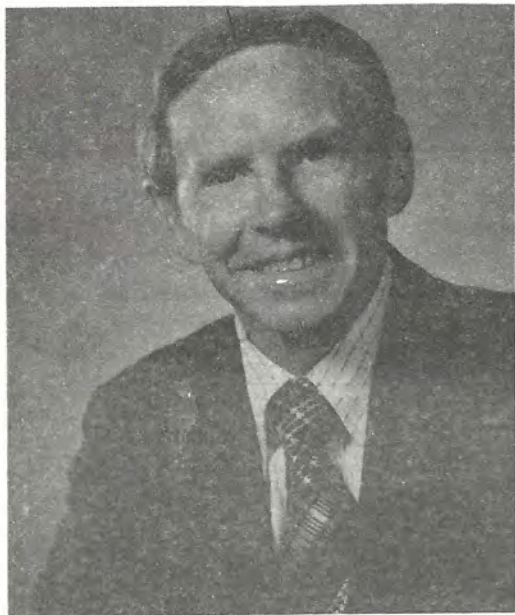
BULLETIN

mississippi geological society



Vol. XXIII, No. 5, January, 1976

THE GEOLOGIST AND FEDERAL LEGISLATION: TOPIC FOR JAN.. 21



Frank G. Harrison, Jr.
January MGS Speaker

AIPG, AAPG PRESIDENT ELECT CANDIDATE MGS JANUARY SPEAKER

Frank W. Harrison Jr., of Lafayette, Louisiana, will be the MGS speaker for the January 21 noon meeting. Mr. Harrison a native Louisiana, is a consulting geologist and independent in Lafayette. Following his graduation from L.S.U., he was employed successively by Union Producing Company, Seaboard Oil, Trans-Tex Drilling, and American Natural Gas Producing. In 1959, he became a consultant and independent.

Mr. Harrison's professional affiliations include AAPG, AIPG, GSA, SIPES, IPAA and the geological societies of Lafayette, Houston, and New Orleans. He has served all of them in various capacities, and is currently candidate for AAPG President Elect. His publications are on South Louisiana's stratigraphy, oil and gas fields, and forced unitization

His topic, "Washington, The Geologist, and the Energy Crisis", is timely, of course, and his talk is supported by his Washington conferences with Congressman and Senators. It behooves YOU to attend this meeting.

Remember that the November meeting attendance was so unexpectedly high that some seating arrangements were delayed? You can avoid the possibility that your seating will be delayed if you call T. C. Rader, 948 4128, for reservations no later than noon, January 20.

CALENDAR

- | | |
|---------|---|
| Jan. 20 | PETROLEUM AUXILIARY
Colonial Country Club
10:00 a.m. |
| Jan. 21 | MISS. GEOL. SOCIETY
Capitol City Petroleum Club
11:30 a.m. |
| Jan. 26 | JACKSON GEOPHYSICAL SOCIETY
Primos Northgate Restuarant
5:30 p.m. |

MISSISSIPPI GEOLOGICAL SOCIETY

OFFICERS

Jerry E. Zoble	President	Consultant
Elwood Ruhl	1st Vice Pres.	Florida Gas Exp.
Jim White	2nd Vice Pres.	Marr Co.
David Cate	Secretary	Florida Gas Exp.
Sarah Childress	Treasurer	Miss. Geo. Survey
W. E. Taylor	Past President	Consultant

DELEGATES

J. B. Goldman, Jr.	A.A.P.G.	Florida Gas Exp.
Philip R. Reeves	A.A.P.G.	Cities Service Oil
Kevin Cahill	G.C.A.G.S.	Shenandoah Oil

COMMITTEES AND CHAIRMEN

AAPG Membership	J. B. Goldman, Jr. & Philip R. Reeves
AAPG Public Information	Verne L. Culbertson
Continuing Education	Chuck Erwin
Entertainment	T. C. Rader
Golf	James L. Cummings
Job Placement	Larry Boland
Nomenclature	James Bollman
Program	John D. Myers
Projection	Ronald Tisdale
Publicity	Verne L. Culbertson

NEWS BULLETIN STAFF

Editor	Bill McGee
Asst. Editor	Les Aultman
Advertising Mgr.	Paul Day
Petroleum Auxiliary	Virginia Force
Geophysics	Don Smith
Land	Rip Mason
Photographer	David Williamson
Progress	Don Biel

WASHINGTON, THE GEOLOGIST, AND THE ENERGY CRISIS: ABSTRACT

Congress in one year, 1975, passed more legislation which adversely affects the oil and gas industry than in the previous history of the industry. Paradoxically, this punitive action came in the midst of our Nation's greatest energy crisis. If this debilitation legislative trend continues, domestic exploration will soon be eradicated, resulting in eventual total dependence upon foreign crude.

The paramount question is what can geologists do to help reverse the tide. After several trips to Washington in 1975 to confer with Congressmen and Senators about critical oil legislation, I am convinced that the geologist holds the political, as well as the professional key to solving our Nation's energy crisis. I have observed in Washington that geologists as professionals are highly respected and have excellent credibility with members of Congress. Out of concern for our Nation's future it is high time geologists take advantage of this relationship to educate and inform Congress about exploration. Hopefully, through our influence an auspicious economic and political climate can be once again established in which geologists can explore unencumbered to find the oil and gas necessary for domestic independence.

WINDFALL OIL PROFITS COMPANY IN THE NEWS AGAIN

(The following is a reprint of a column in the November 1975, issue of the South Texas Geological Society Bulletin. The author is E. M. Warren, editor of their bulletin. Ed.)

Windfall Oil Profits Company (WOP) again made the headlines last month when it announced that after five unsuccessful years exploring for oil, the company finally made a discovery. A press release stated that WOP punctured the balloon of defeat with the drilling of its 14,000 foot Cambrian well in LaSalle County, Texas when the well tested 10 feet of heavy oil cut mud plus 140 feet of oily muddy water from a slightly vugular dolomite having stain and poor cut at an interval of 13,131 - 13,138 feet.

Congratulations are still pouring in from their stockholders and WOP'S stock shot up 1/8 point on the New York Exchange in less than three weeks. The firm's president, Mr. P. R. Omoter, could scarcely contain his excitement when he was invited to give the graduation speech at the Federal Geological and Engineering Training College in Hemstead, Long Island.

"Students," he began, "you are being trained here to operate and run the newly formed and long awaited nationalized oil company called, and aptly so, Socialized Control for the Renewal and Withdrawal of Energy as Demanded, or SCREWED. I am indeed proud to be the speaker at the first graduation class of you esteemed gentlemen and am confident that each and every one will carry on the traditions of geology and engineering into the future exploration effort of the United States Government."

JOSEPH F. FRITZ		
Petroleum Geologist		
Jackson, Miss.		601/354-1134
H. LEROY FULGHUM		
Consulting Geologist		
257 Valley Vista Drive		601/956-6346
Jackson, Mississippi 39211		
JAMES B. FURRH, JR.		
Oil Producer		
1236 Capital Towers		Jackson, Mississippi
GEOPHYSICAL DATABANKS, INC.		
1234 Loyola Bldg.		Room 303
New Orleans, La. 70112		504-581-4724
Grady Loftin Jim Malone		
CDP data available in the following area:		
Gulf Coast Appalachians Rockies		
Agents for Petroconsultants, S.A.		
GEOPHYSICAL FIELD SURVEYS, INC.		
Seismic Exploration		
Room 201	975 North Street	Jackson, MS
P. O. Box 12304, Colonial Station		601/948-1580
GERMANY INVESTMENT CO.		
Norman G. Germany		E. Wilson Germany
Dallas, Texas		Natchez, Mississippi
GUARDIAN OIL COMPANY		
L. Graham Hughes		Charles S. McClelland
1636 Capital Towers		Jackson, Mississippi
G. W. GULMON & ASSOCIATES		
Petroleum Geologist		
Natchez, Mississippi		
H. E. Hansen, Dallas		A. T. Ricci, Jr., Natchez

Cheers rang out as Mr. Omoter continued, "All of you have studied long and hard in this crash program set up by Congress in order to get highly qualified trained men and women into SCREWED. You should be proud of your accomplishments and the fact that each and every one has attained the scholastic goal of graduating Cum Laude with a total of 63 hours and an out standing 12 hours in Geology or related fields. I feel sure that the future of SCREWED is in good hands in all states "

As we remember, Senator Stuart Ashford Pid had been appointed Exploration Manager of the new Federal Oil Company-United States Division-and he beamed with satisfaction as P. R. Omoter heaped words of praise his direction because of Senator Stu Pid's untiring efforts in getting this new branch of the Government into functional working order. Senator Pid's credentials for his new position were very imposing and according to the Washington Post he was certainly qualified to be appointed to this most important position. He had graduated from Long Island University with a BA in Basket Weaving and a minor in Geology, in fact, his Master's Thesis (which has since become a classic) was entitled, "How to Earn a Living Without Actually Working" and research on this particular project is what decided him on entering politics immediately after graduation. We most certainly agree that Senator Pid has the exact qualifications required and the intelligence necessary to run a Federal Oil Company if past performance of Federally operated enterprises is a criteria.

During a press conference afterwards, both Senator S. A. Pid and Mr. P. R. Omoter bubbled with enthusiasm about the future plans of SCREWED, Senator Pid was quoted as saying, "I plan to pattern this exploration effort of the U.S. Government after other highly successful efforts such as the Social Security Program, the Post Office Department and Amtrack "

A few bad-mouthers around the Capitol had constantly been running Senator Pid down as being in cahoots with Mr. Omoter, but with the help and assistance of the IRS, the Senator's critics were soon silenced. By way of explanation, Senator Pid is of Afghanastanian extraction and the IRS (Inter Racial Society) proved that the rumors being circulated concerning pay-offs, extra curricular activities, European "fact-finding" trips and the like constituted an attack on his heritage, and true or not, were irrelevant.

Eventually, the national oil company got kicked off on its exploration program and successfully completed the first one hundred wells as dry holes, shrugging off criticism from the underground newspaper published by the AAPG that recent volcanoes are not classified as anticlinal structures nor are rocks such as metamorphic gneiss a good place to look for oil because as Senator Pid put it "They have cute wavy lines." The good Senator reminded his detractors that good old Uncle Sam has plenty of money and finding "cheap energy" for the American consumer was their only goal.

Mr. Omoter researched many antiquated exploration programs from the now defunct private oil industry and proudly announced to Senator Pid and the world that "Oil is Where You Find It." Senator Stu was completely overwhelmed by the wisdom of this pronouncement and promptly obtained an AFE from the Treasury Department for a Pre-Cambrian test offsetting the atomic waste disposal well at the Government Arsenal just outside of Denver.

P. R. Omoter couldn't help taking a piece of the action and got Windfall Oil Profits in for a quarter of the working interest. Therefore, through the efforts of Senator Pid, WOP very thoroughly got SCREWED in a drilling deal.

W. L. HARPER	
Geophysical Consultant	
115 Sterling Towers	Jackson, Miss. 39202
Phone 601-352-3339	
ALAN JACKSON	
Consulting Geologist	Telephone 601-582-1192
503 Mandalay Drive	Hattiesburg, Mississippi 39401
ROBERT R. JACOBS	
Petroleum Geologist	
P. O. Box 16263	Jackson, Mississippi 39206
362-4846	
JUSTISS-MEARS OIL CO., INC.	
P. O. Drawer "N"	Jena, Louisiana 71342
(318) 992-4000	
H. E. KARGES	
Consulting Geologist	
1812 Capital Towers	P. O. Box 1635
Phone 352-0972	Jackson, Miss. 39205

GCAGS BEST PAPER AWARDS

The Awards Committee is pleased to announce the following recipients of the Best Paper Awards at the 1975 G.C.A.G.S. Convention in Jackson, Mississippi:

First Place Award: W. L. Seal and J. A. Gilreath: Vermilion Block 16 Field Irregular Reservoir Performance.

Second Place and A. I. Levenson Award: John Myers: Petroleum Geology of Choctaw County Alabama.

Third Place Award: Bruce Baganz, John Horne, and John Fern: Carboniferous and Recent Mississippi Lower Delta Plains.

Checks and plaques will be presented at the 1976 Convention in Shreveport.

F. Dean Kebert
Co-Chairman, Awards Committee

K. B. KEARY, JR.	
Petroleum Geologist	
439 W. Northside Dr.	362-4895
Jackson, MS 39206	
WILBUR H. KNIGHT	
Consulting Geologist	
1017 First Nat'l Bank Bldg.	Jackson, Miss. 355-1528
HILTON L. LADNER	
Petroleum Geologist	
903 FNB Building	354-3616
Jackson, Mississippi	
LARCO DRILLING COMPANY, INC.	
Suite 1700	Jackson, Miss. 39201
Capital Towers	Phone 355-1542

CLAUDE B. HAMMILL	
Oil Operator	
2306 First Nat'l Bank Bldg.	Houston, TX 77002

R. E. Dick LEE AND ASSOCIATES	
The Redd Building P. O. Box 5168	4443 I-55 North Jackson, MS 39216
LOCATION SAMPLE SERVICE, INC. Bob Legate Jackson, Mississippi 932-1410	
MILLER OIL PURCHASING CO. A Division of Ergon, Inc.	
P. O. Box 1308	Jackson, Mississippi 39205

MORTON M. PHILLIPS Petroleum Geologist	
902 Milner Bldg.	Ph. 355-3364 Jackson, Miss. 39201 Ph. 366-9665
WILLIAM H. PLAYER & ASSOCIATES P. O. Box 1383	
108 Wall St.	Natchez, MS
PRUET & HUGHES COMPANY 1111 Capital Towers Building Jackson, Mississippi 39201	
PAUL ANTHONY RADZEWICZ Oil Producer	
1829 Deposit Gty. Bldg	969-3950 Jackson, Miss. 39201
RIDGWAYS	
103 E. Pearl Street	355-4751 Jackson, Mississippi

AUXILIARY ACTIVITIES

The Annual Christmas Sherry Party of the Petroleum Auxiliary was held at the home of Mrs. Charles Hayes.

Greeting the guests and members were the hostesses Mrs. Mort Phillips, chairman, Mrs. Jimmie Walker, Mrs. Buddy Twiner, Mrs. Benton Vernon and Mrs. James Foster and Mrs. Charles Hayes.

There was a large group in attendance and with traditional Christmas decorations adding to the good spirits of guests and members.


The next meeting will be January 20, 1976, at 10 a.m.. This will be a Bridge Luncheon at Colonial Country Club with Mrs. Emil Monsour Chairman, Mrs. Earl Anderson, Mrs. Stewart Welch, Mrs. Jerry Watkins, Mrs. Fred Lewis and Mrs. Henry Toler.

POSER

Show how a random drilling "expert" can drill 38 wells in such a way that there are 12 rows of wells with 7 wells in each row. Answer was to be published last month, but was unavoidably delayed until this month.



MOON-HINES	
Robert M. Moon 1804 Capital Towers	E. R. Hines, Jr. 601-354-3753 Jackson, Mississippi 39201
M. D. (Dale) MYERS CONSULTANT GEOLOGIST Phone (601) 355-3536	
OIL WELL LOGGING, INC.	
P. O. Box 16039 - Jackson, Mississippi	354-3642
MARVIN L. OXLEY	
134 South Lamar St Jackson, Miss. 39201	601/969-4149 601/956-6446

SCHLUMBERGER WELL SERVICES	
Jackson, Mississippi	Phone 352-8589
 Seismograph Service Corporation <small>A SUBSIDIARY OF RAYTHEON COMPANY</small>	
<small>P. O. Box 1590 • Tulsa, Okla. 74102 • (918) 627-3330 DISTRICT OFFICES AND DATA PROCESSING CENTERS HOUSTON • MIDLAND • DENVER • ALMA, MI.</small>	
SOUTHERN NATURAL GAS CO.	
P. O. Box 1513 Donald R. Scherer, Dist. Geologist	Houston, Texas 622-7270

BYLAWS OF MGS

Most organizations periodically furnish their members with a copy of the organizational structure. As a service to the MGS membership, the society's current BYLAWS are included in this issue of the Bulletin.

THE MISSISSIPPI GEOLOGICAL SOCIETY, INC.

ARTICLE I - NAME AND AFFILIATION

The name of the Society shall be "The Mississippi Geological Society, Inc." It shall be affiliated with the American Association of Petroleum Geologists.

ARTICLE II - OBJECTS

The objects of this Society are: (1) the stimulation of interest in geology and related sciences; (2) the encouragement of scientific research among members; (3) the promotion of social and professional fellowship among members; (4) the dissemination and discussion of geological information; and (5) the Society shall not be operated for profit and no financial benefits of any nature shall ever accrue to the members thereof.

ARTICLE III - MEMBERSHIP

Section I: The membership of this organization shall be made up of active members, associate members, and honorary members.

Section II: In order to be eligible for active membership, an applicant shall: (1) have a degree in geology or an allied science from a recognized college or university and shall be directly engaged in the application of geology, or shall (2) have been primarily engaged in geological work during at least the preceding five years. These requirements shall not apply to any member if he were a charter member of the Society as reflected by the June 16 1940, membership list.

Section III: Any person shall be eligible to associate membership who is actively engaged in geological or related work or the study of geology. Associate Members shall not be eligible to hold elective office or to sponsor applicants for active or associate membership, but shall have all other rights and privileges enjoyed by active members. If an associate member attains eligibility for active membership, he may apply for a transfer to active membership.

Section IV: Honorary Members. The Board of Directors may from time to time elect by unanimous vote of the Board as honorary members of the Mississippi Geological Society Inc., persons who are present or past members that have contributed distinguished services to the Society. It is not intended nor desirable that there should be a large or promiscuous number of such members, but that is should be considered an honor to receive from the Society an honorary membership as a token award in appreciation and esteem for meritorious services. Honorary members shall not be required to pay dues and may enjoy all privileges of the Society.

Section V: Any member may be suspended or dropped from the membership of the Society for misconduct or actions harmful to the Society, action to be taken at the discretion of the Board of Directors by a majority vote of the Board. Such charges shall be made in writing to the member, who may protest such charges within 30 days from the date which they were mailed. After the 30 days have expired, the Board of Directors may expel such member by a majority vote of the Board. The member may resign before the end of the 30 days, at which time the foregoing proceedings shall automatically terminate.

ARTICLE IV - OFFICERS AND BOARD OF DIRECTORS

Section I: Officers shall be a President, a First Vice President, a Second Vice President, a Treasurer and a Secretary. These, together with the Past President shall constitute the Board of Directors. If the Past President for any reason shall be unable to serve as a member of the Board of Directors the President shall fill the vacancy by the appointment of the next available preceding Past President. No officer shall succeed himself in office, with the exception of the First Vice President who after having succeeded to the Presidency due to a vacancy in that office may upon election serve a full term as President.

Section II: The duties of the President shall be to preside at all meetings, maintain order, call special meetings subject to the approval of the Board of Directors, appoint all committees, and shall delegate members to represent the Society. He may at his option serve on any committee. He shall, together with the Treasurer, sign all checks, drafts, contracts, and all other obligations of the Society. In the temporary absence of any other officer of the Society, he shall have the power to appoint a member to assume duties pro tempore.

Section III (a): The First Vice President shall assume the office of the President in case of a vacancy from any cause in that office, and shall assume the duties of the President in case of the absence or disability of the latter. He shall be at the disposal of the President for any duty necessary to the proper functioning of the Society.

(b) The Second Vice President shall be responsible for the maintenance and supervision of the various publications of the Society, and he shall organize the necessary committees to properly administer the care, maintenance and revision of the publications necessary to providing current information on various subjects of geologic interest and the keeping of records.

Section IV: The Treasurer shall assume the duties of the President in case of the temporary absence of both the President and First Vice President. He, together with the President, shall have charge of the financial affairs of the Society. He shall submit an annual report and inventory at the last meeting before the summer recess, and any other special reports upon the request of the President. He shall receive and disburse all monies; however, expenditures in excess of one hundred dollars shall be made only with the approval of the Board of Directors. During the month of August, the Treasurer shall send statements or notices of dues to all members, except honorary members.

Section V: The Secretary shall assume the duties of the President in case of the temporary absence of all the other officers, except the Second Vice President. It shall be the duty of the Secretary to fully and permanently record the minutes of all the meetings of the Society and all meetings of the Board of Directors. He shall prepare and distribute by mail not later than October 15 a membership list and a list of committee assignments. It shall be his duty to prepare and keep in his possession at every meeting a copy of the Bylaws with all amendments thereto. He shall be responsible for all secretarial duties connected with affairs of the Society. He shall prepare all ballots and papers necessary to any Society election.

Section VI: In addition to their other duties, the Board of Directors shall make or cause to be made an annual check and review of the Society's records prior to the last meeting of the year.

ARTICLE V - ELECTIONS

Section I: General Elections

A. Nominating Committee. A Nominating Committee composed of five (5) members shall be appointed by the Board of Directors 30 days before the first regular meeting in April. No incumbent officer shall serve on this Committee. The Committee shall be discharged after presenting its slate of candidates to the Society.

B. Nominations: Nominations for officers of the Society shall be made by the Nominating Committee and a slate of candidates announced at the first regular meeting in April. Two or more candidates shall be nominated for each office by the Committee. Additional candidates for each office may be nominated from the floor at this meeting or at the last regular meeting in April. A biographical sketch of each candidate shall be published and mailed to each member of the Society at least two weeks prior to the election, or given verbally at the regular meeting just prior to the election.

SECTION II Special Elections

C. Voting: Election of officers shall be held each year at the last regular meeting of the Society before the summer recess. Voting shall be conducted by secret ballots prepared in advance by the Secretary. A majority vote of the members present and voting shall decide the election. In case no candidate receives a majority vote on the first ballot, the candidate with the least number of votes shall be stricken from the ballot and another poll taken. This procedure shall be continued until a candidate receives a majority vote. Any member who cannot be present at the election meeting may upon request obtain an absentee ballot from the Secretary of the Society. The Secretary shall deliver all sealed ballots to the Election Judges at the election meeting. Only paid-up members and Honorary Members shall be eligible to vote in any election.

Section III: Election Judges

Prior to the balloting at any election, the President shall appoint three Election Judges from the membership who are not incumbent officers or candidates for any office of the Society. These Judges are charged with the secret counting of the ballots and announcing the names of those elected. Election Judges will be appointed for each election.

ARTICLE VI – BOARD OF DIRECTORS

The Board of Directors, in addition to its duties specified in the Constitution, shall meet at least monthly throughout the entire calendar year and shall be the governing body of the Society. A quorum of this Board shall consist of a minimum of four members. To conduct business, a majority vote of those present is necessary.

ARTICLE VII – STANDING COMMITTEES

As soon as practicable taking office the President shall appoint the Chairman of seven standing committees and after consultation with these Chairmen shall appoint the Committee Membership. These committees shall be as follows:

- A. A.A.P.G. Committee
- B. Entertainment Committee
- C. Field Trip Committee
- D. Nomenclature Committee
- E. Program Committee
- F. Projection Committee
- G. Publicity Committee

A. The A.A.P.G. Committee shall coordinate the efforts and activities of the Mississippi Geological Society, Inc. with the American Association of Petroroleum Geologists. If any member or members of this Society is a District Representative or holds a National Office in the A.A.P.G., such members shall automatically serve on this committee.

B. The Entertainment Committee shall provide a suitable place for each meeting of the Society. If a luncheon or dinner is served in connection with the meeting, this Committee shall make all necessary arrangements including reservations. This Committee shall plan and coordinate any other social function of the Society.

C. The Field Trip Committee shall make and supervise the general plans of field trips which may be held from time to time at the discretion of the Society. This Committee shall avail themselves of the services of any other Committee of the Society whenever it is necessary.

D. The Nomenclature Committee shall consist of a minimum of five members. Its membership shall include the First Vice President of the Society and whenever possible, one member of the Mississippi Oil Scouts Association. This Committee shall promptly name any new oil and/or gas fields, reservoirs, salt domes and any other geologic feature they deem advisable in the State of Mississippi. The Vice President will be responsible in seeing that all interested operators are contacted prior to the naming of any new discovery. After naming any new discovery in the state, the Committee shall immediately notify the Secretary of the Society and such publications and regulatory bodies as they deem necessary. The Secretary of the Society will enter any new names in the minutes and announce them at the next meeting of the Society.

E. The Program Committee: The Program Committee shall secure speakers and lecturers to present topics of interest to the Society, shall make all necessary arrangements for presentation, and this Committee shall notify sufficiently in advance all other Committees whose services will be required to implement the meeting.

F. The Projection Committee shall provide and operate all projection and sound equipment necessary to any presentation before the Society.

G. The Publicity Committee, upon notification of the Chairman of the Program Committee, shall prepare and distribute to all members in advance notice of all meetings. This Committee shall as soon as practicable contact all new geologists in this area who are eligible for membership in the Society. This Committee shall secure as much favorable publicity as possible for the Society and the profession of geology.

ARTICLE VIII – SPECIAL COMMITTEES

The President shall appoint the Chairmen of special committees and, after consultation with these Chairmen, shall appoint the membership thereof. These special committees shall specifically include those with technical assignments designed to further the objectives of this Society as stated in Article II of the Constitution.

ARTICLE IX – DUES AND ASSESSMENTS

The annual dues of Active and Associate Members shall be Five Dollars (\$5.00) payable at the beginning of each fiscal year. The fiscal year of the Society shall be from June 1st through May 31st.

Special assessments may be levied at any meeting by a majority vote of the members present, provided advance notice of the proposed assessments has been made to all members of the Society by mail.

Members who are in arrears in dues and/or special assessments on October 1st shall be dropped from the list of members. Any former member may be reinstated by payment of any outstanding dues and obligations which were incurred prior to the date when he ceased to be a member of the Society, and by payments of dues for the fiscal year in which he requests reinstatement.

ARTICLE X – MEETING

A. Regular Meetings: Regular meetings shall be held each month from October to May, inclusive. Regular meeting dates may be changed or cancelled at the discretion of the Board of Directors.

B. Special Meetings: Special meetings may be called from time to time to conduct business or for any other purpose deemed advisable by the Board of Directors, due notice having been given in advance.

ARTICLE XI – AMENDMENTS

Amendments to the Bylaws may be made by a two-thirds majority of the membership voting by mailed ballots, to be supplied and mailed by the Society to the membership, provided a motion to amend said Bylaws has been passed at a regular business meeting by a majority of the members present at said meeting. Returned ballots must be post marked within 30 days of the mail out day in order to be counted.

ROBERT L. THOMSEN	
1818 Capital Towers Jackson, Mississippi	P. O. Box 1847
WOOLF & MAGEE, INC.	
P. O. Box 3566 Tyler, Texas 75701	
J. W. Arnold, Pres.	Allen W. Woolf, Vice Pres.
W. D. Magee, Jr., Sec.-Treas.	A. B. Irion, Drig. Supt.
Tyler, TX AC 214 562-4051 – Natchez, MS AC 601 445-4570	
Rotary Rigs in Texas, Louisiana, Arkansas, Mississippi and Alabama	
ROBERT WOMACK, JR.	
Consulting Geologist	
1509 Standard Life Bldg.	Jackson, Miss. 39201
Phone 353-4650	

C & K PETROLEUM, INC.	
1800 Capital Towers Jackson, Mississippi 39201	601/948-1111
CALLON PETROLEUM CO.	
Box 1287	Natchez, Mississippi 39120
CAPITOL PRINTING & BLUE PRINT COMPANY	
330 East Rankin Street Jackson, Miss. 39202	353-2751
L. WICK CARY	
Room 932 National Bank of Commerce Bldg.	Consulting Geophysicist New Orleans, La.
Box 50391	
THOMAS H. CLEMENTS	
Consulting Geophysicist	
1378 Capital Towers Jackson, Mississippi 39201	Phone 601/355-8724
CORE LABORATORIES, INC.	
Core Analysis and Well Logging	
Laurel 601/425-3394	New Orleans 504/524-6256
Jackson 601/932-1492	Mobile 205/456-2271

HOUSTON ANNOUNCES 1975-76 OFFICERS

The newly elected officers of the Houston Geological Society for the 1975-76 season are:

Anthony Reso, President
Stewart Chuber, 1st V.P.
Martha Lou Broussard 2nd V.P.
Cecil R. Rives, Sec.
Dean Grafton, Treas.

A & N PRODUCTING SERVICES, INC.	
709 Standard Life Building Jackson, Mississippi 39205	P. O. Box 1669
AMERICA SOUTHWEST CORP.	
Box 936, Jackson, Miss. Gulf Coast Drilling & Exploration	354-2513
THE ANALYSTS	
Core Analysis – Mud Logging Laurel – Ph. 649-3444	
Bunk Caldwell	Frank Howson
ATWATER, CARTER, MILLER & HEFFNER	
Consulting Geologists and Engineers 424 Whitney Bank Building New Orleans, Louisiana 70130 (501) 581-6527	
DAVID K. BROOKS	
660 Milner Building Oil Exploration 948-5722	Jackson, Mississippi
BROWNING & WELCH	
GEOLOGISTS Suite 1411, Standard Life Building Jackson, Mississippi 39201	

PROGRESS

Mississippi Completions – November, 1975

EXPLORATORY	Oil	Gas	Dry
Eocene	0	0	6
UK	0	0	1
LK	0	0	0
Jurassic	0	0	3
Paleozoic	0	0	1
DEVELOPMENT	Oil	Gas	Dry
Eocene	3	0	12
UK	1	0	2
LK	0	0	0
Jurassic	0	0	0
Paleozoic	2	0	0

CRAFT PETROLEUM CO., INC.	
Wyatt E. Craft	
Exploration	Operations
CRUDE OIL PURCHASING, INC.	
P. O. Box 22660 Jackson, Mississippi 39205	Phone 601 – 948-5853
DRESSER-ATLAS	
Jackson, Mississippi	948-5591

ENSERCH EXPLORATION COMPANY
(Formerly Lone Star Producing Company)
Maurice N. Birdwell
District Manager

1530 Capital Towers
Jackson, Mississippi 39205

P. O. Box 219
601 969-0100

HERBERT J. FERBER
Consulting Geophysicist

5456 Hartsdale Drive
Jackson, Mississippi

956-4666

FLORIDA GAS EXPLORATION CO.

1444 Capital Towers
Jackson, Mississippi 39201

WADE FORTENBERY
Geologist

P. O. Box 1183 - Natchez, Miss.
Office: Hwy. 61 South

Bus. 442-6011
Res. 442-3250

MISSISSIPPI GEOLOGICAL SOCIETY
P. O. BOX 422
JACKSON, MS 39205

NEWS

BULLETIN

mississippi geological society



Vol. XXIII, No. 6, February, 1976

EARTH RESOURCES SATELLITE DATA AND APPLICATIONS TO BE DISCUSSED AT FEBRUARY MEETING

M.G.S. — J.G.S. JOINT MEETING FEBRUARY 17

This year's joint meeting of the Mississippi Geological Society and the Jackson Geophysical Society will be held Tuesday, February 17, 1976, starting at 5:30 p.m. The meeting will be held at Primos Northgate Restuarant. Based on immediate past turnouts, this meeting will be well attended. Last month's combined attendance was 101, and a room accomadating 100 has been reserved for this one. Call your reservations into Dick Schmitz or Dick Lee, 956-4775, and T. C. Rader, 948-4128, on or before Monday, February 16.

FILLIPONE SPEAKER FOR FEBRUARY MEETING

Mr. Walter R. Fillipone will be the guest speaker at the joint meeting of the Jackson Geophysical Society and the Mississippi Geological Society on February 17. A former distinguished lecturer for the S.E.G., he will talk about satellite imagery and its application.

Walt received his B.S. in geology from Marietta College, and his M.S. in geophysics from California Institute of Technology. He was employed by United Geophysical Corporation for twelve years in various supervisory capacities, and by Union Oil Company of California since 1955. For the past eleven years, Walt has been Senior Research Associate in exploration at Union's Research Center.

FEBRUARY SPONSORS

WARD EXPLORATION COMPANY

HILTON L. LADNER

MOON & HINES

MISSISSIPPI GEOLOGICAL SOCIETY

OFFICERS

Jerry E. Zoble	President	Consultant
Elwood Ruhl	1st Vice Pres.	Florida Gas Exp.
Jim White	2nd Vice Pres.	Marr Co.
David Cate	Secretary	Florida Gas Exp.
Sarah Childress	Treasurer	Miss. Geo. Survey
W. E. Taylor	Past President	Consultant

DELEGATES

J. B. Goldman, Jr.	A.A.P.G.	Florida Gas Exp.
Philip R. Reeves	A.A.P.G.	Cities Service Oil
Kevin Cahill	G.C.A.G.S.	Shenandoah Oil

COMMITTEES AND CHAIRMEN

AAPG Membership	J. B. Goldman, Jr. & Philip R. Reeves
AAPG Public Information	Verne L. Culbertson
Entertainment	T. C. Rader
Golf	James L. Cummings
Nomenclature	James Bollman
Program	John D. Myers
Projection	Ronald Tisdale
Publicity	Verne L. Culbertson

NEWS BULLETIN STAFF

Editor	Bill McGee
Asst. Editor	Les Aultman
Advertising Mgr.	Paul Day
Petroleum Auxiliary	Virginia Force
Geophysics	Don Smith
Land	Rip Mason
Photographer	David Williamson
Progress	Don Biel

W. L. HARPER

Geophysical Consultant

115 Sterling Towers Jackson, Miss. 39202
Phone 601-352-3339

FEBRUARY SPEAKER'S ABSTRACT

LANDSAT IMAGERY AND TECTONIC FEATURES OF THE UNITED STATES

by
Walter R. Fillipone

A description of the acquisition of satellite imagery will be presented showing its spectral composition and resolution. Landsat imagery can be processed on a digital computer system utilizing software designed for seismic processing. Linear features perceptible on the imagery will be compared with tectonic elements, surface geology, and subsurface geology. The relationship of continental-scale fault and fracture systems in the United States and oceanic ridge and fracture systems will be illustrated. Suggestions for their cause, significance, and application will be offered.

PRESIDENT'S NOTES:

This past month has been a busy one for your society. In addition to our regular meeting, at which Frank Harrison most ably and interestingly spoke, we also sent the names of two candidates for A.A.P.G. Delegate to replace Brick Goldman whose term expires in June this year. The two candidates are Allen Jackson and Dean Kebert. The one polling the most votes will be our delegate and the other will be the alternate.

Included in this bulletin is a ballot to vote on an amendment to our constitution regarding the election of the First Vice President, who will then automatically be the President-Elect to serve the following year. Your executive committee heartily endorses this amendment as a good thing for the society, which should guarantee continuity in the administration of the society's business. We therefore request your support of this amendment!

The A.A.P.G. has often been the object of our criticism of their ineffectiveness in the political arena. As a result of this criticism, they have implemented several programs to make our opinions known and felt where it can do the most good. One of the best of these programs is the Energy Seminar for the Media. The intent of this program is to educate TV, press and radio reporters in strategic areas in the science, technology, and economics of our industry. The first of such seminars was held in Houston last April and the meeting was considered a complete success. Several such seminars are planned for this year in other major cities in the country. Since the A.A.P.G. cannot support this program financially, a special appeal is being made throughout the membership for contributions. Most of the major companies have pledged funds, but the A.A.P.G. would hope that this program would be one sponsored by a complete spectrum of our membership. Thus, they would like to solicit funds from small companies and individuals who would like to participate in an important program such as this. It has not yet been determined, but this contribution is probably not even tax deductible. If any of you would like more detailed information regarding this matter, I would gladly make available all the information I have in my possession. The next presentation is planned for Los Angeles as I understand it.

At the last regular meeting, the possibility of a late winter dance was discussed. It was decided that your president should look into the possibility and hopefully plan such a function for somewhere around the first week in March. We have high hopes of getting everything arranged by that time. We should know something definite by our next meeting.

Jerry Zoble

ALAN JACKSON Consulting Geologist 503 Mandalay Drive	Telephone 601-582-1192 Hattiesburg, Mississippi 39401
---	--

WILBUR H. KNIGHT Consulting Geologist 1017 First Nat'l Bank Bldg.	Jackson, Miss. 355-1528
--	-------------------------

**MISSISSIPPI GEOLOGICAL SOCIETY
TREASURER'S REPORT
June 30, 1975 - January 31, 1976**

SPECIAL NOTICE:

BAY ST. LOUIS NASA SEMINAR

The National Space Technology Laboratories and NASA in Bay St. Louis, Mississippi have extended an invitation to all members of the A.I.P.G. and Mississippi Geological Society for a "Geological Seminar", for lack of a better name, on Friday, February 27th at their facilities in Bay St. Louis. The various presentations will be slanted toward the petroleum industry with particular emphasis on how we in the business can use these facilities. Among the various topics to be discussed will be Geothermal Projects, EROS Application, etc. It is about a 3 hour drive from Jackson and it has been scheduled on Friday to accomodate anyone who would like to spend the weekend on the coast. You will have to arrange for your own transportation to Bay St. Louis, but transportation while at the facility will be provided. The day's activities are scheduled to begin promptly at 9:00 A.M. and you will be through by 4:00 P.M.

All those who are interested, please contact Jerry Zoble for additional details and if you plan to attend, please make reservations by Monday, February 23rd, so that we can give them a head count for use in their preparations. I've heard good things about the NASA/NSTL installation and strongly urge all of you to make this interesting and educational seminar.

Jerry Zoble

HILTON L. LADNER 903 FNB Building Petroleum Geologist Jackson, Mississippi	354-3616
LARCO DRILLING COMPANY, INC.	
Suite 1700 Capital Towers	Jackson, Miss. 39201 Phone 355-1542

AAPG DELEGATE ELECTION

It's that time of year again. Brick Goldman's term as AAPG delegate will expire soon, and the nominating committee has chosen as candidates for his replacement Dean Kebert and Alan Jackson. The term now is three years. AAPG members should have received their ballots by now. Be sure to vote and return your ballot by March 15 to insure that your vote will be counted.

Income:	
Advertising	\$1500.00 ✓
Publications	523.00
Meetings	1707.00
Contributions	690.00
Dues	<u>3320.00</u>
Total Income	\$7740.00
Expenditures	
Publication Costs	\$ 335.95 ✓
Meetings	2065.79
Secretarial Services	1320.56 ✓
Contributions & Scholarships	100.00
Postage	330.58 ✓
Office Supplies	20.00
Storage & Insurance	384.00
Equipment Rental	13.13
Accounting & Audit	70.00
G.C.A.G.S. & A.A.P.G.	320.00
Miscellaneous	<u>62.40</u>
Total Expenditures	\$5022.41
Bank Balance June 30, 1975	\$ 984.78
Income	7740.00
	<u> </u>
Total	\$8724.78
Expenses	5022.41
	<u> </u>
Bank Balance January 31, 1976	\$3702.37

ROBERT R. JACOBS Petroleum Geologist P. O. Box 16263 Jackson, Mississippi 39206 362-4846
JUSTISS-MEARS OIL CO., INC. P. O. Drawer "N" Jena, Louisiana 71342 (318) 992-4000
H. E. KARGES Consulting Geologist 1812 Capital Towers Phone 352-0972 P. O. Box 1635 Jackson, Miss. 39205
K. B. KEARY, JR. Petroleum Geologist 439 W. Northside Dr. Jackson, MS 39206 362-4895

PETROLEUM AUXILIARY

A Bridge Luncheon at the Colonial Country Club was the first meeting of 1976. This meeting was hosted by Mrs. Emil Monsour, Chairman, with Mrs. Earl Anderson, Mrs. Stewart Welch, Mrs. Jerry Watkins, Mrs. Fred Lewis and Mrs. Henry Toler assisting.

During a short business meeting, Mrs. Marvin Oxley, President, announced winners of Bridge scores. Mrs. W. Fleming Browning won High, Mrs. Sam Coggin was second High and Mrs. Steve Dennis was Low.

Door prizes were won by Mrs. Maurice Miesee, Mrs. Claude Wansley, Mrs. Alan Jackson and Mrs. Larry Walters.

Guests were Mrs. Rebecca Pfeaster, Mrs. Pern Williams and Mrs. Marie Currie.

There were fifty-four members present.

The next meeting will be a style show on March 25, 1976, at the Jackson Country Club, at 11:30 with Mrs. Roger Dickerson, chairman, Mrs. Marcial Forester, Mrs. R. R. Lembecke, Mrs. Steve Dennis, Mrs. Jerry Zoble and Mrs. Jeff Tucker. Styles shown will be from Owens.

R. E. Dick LEE AND ASSOCIATES	
The Redd Building P. O. Box 5168	4443 I-55 North Jackson, MS 39216
LOCATION SAMPLE SERVICE, INC. Bob Legate Jackson, Mississippi 932-1410	
MILLER OIL PURCHASING CO. A Division of Ergon, Inc.	
P. O. Box 1308	Jackson, Mississippi 39205
MOON-HINES	
Robert M. Moon 1804 Capital Towers	601-354-3753 E. R. Hines, Jr. Jackson, Mississippi 39201

WELCOME NEW MEMBERS

CHARLES COOK
Jones-O'Brien, Inc.
Shreveport, Louisiana

JOSEPH E. HAZEL
U.S.G.S.
Washington, D.C.

M. D. (Dale) MYERS CONSULTANT GEOLOGIST Phone (601) 355-3536	
OIL WELL LOGGING, INC.	
P. O. Box 16039 - Jackson, Mississippi	354-3642
MARVIN L. OXLEY	
134 South Lamar St Jackson, Miss. 39201	601/969-4149 601/956-6446

PROGRESS

Mississippi Completions - December, 1975

EXPLORATORY	Oil	Gas	Dry
Eocene	1	0	14
UK	0	0	1
LK	1	0	0
Jurassic	0	0	3
Paleozoic	0	0	5
DEVELOPMENT	Oil	Gas	Dry
Eocene	1	0	4
UK	2	0	1
LK	0	0	2
Jurassic	0	0	0
Paleozoic	0	0	0

NEW FIELD DISCOVERIES

Unnamed	Pex Pet Co. & R. E. Schweig No. 1 Morrison-McKittrick Unit Section 11-6N-3W, Adams County 1PF (2955'-2957') Sparta 35 BOPD, 8/64" ch., T. P. 520 Lb.
North Bolton	Rosson-Laymon & Hamilton Bros. No. 1 Gaddis Farms Section 14-6N-3W, Hinds County 1PP (11066' - 11084') Rodessa 288 BOPD, 46"

MORTON M. PHILLIPS Petroleum Geologist	
902 Milner Bldg.	Ph. 355-3364 Jackson, Miss. 39201 Ph. 366-9665
WILLIAM H. PLAYER & ASSOCIATES P. O. Box 1383	
108 Wall St.	Natchez, MS

MAY AAPG/SEPM CONVENTION FIELD TRIPS

The upcoming AAPG/SEPM convention in May, 1976, has six field trips planned that cover areas from the Black Warrior Basin to southern Guatemala. Because of the broad scope of these trips, one or more should be of interest to all geologists and their wives attending the convention. The trips have proven to be very popular, and attendance is expected to be full. Because of logistics, all have fairly small limit numbers — — — early reservations therefore are wise precautions. The following list is furnished for your information. For additional information, call Bill McGee (969-0100) or Jim Hartman (Shell, New Orleans, 504-588-4741).

Classic Tertiary and Quarternary localities and Historic Highlights of the Jackson—Natchez—Vicksburg Area.

Friday, May 21, 3:00 P.M. — Sunday, May 23.
C. R. Kolb, Consulting Geologist, Vicksburg
Fee: \$70 — includes guide book, transportation, lodging, lunches.
Limit: 75

Weeks Island Salt Dome

Saturday, May 22, 6:00 A.M. — late evening.
D. H. Kupfer, L.S.U. and J.P. Morgan, L.S.U.
Fed. regs. — safety glasses, hardhats, flashlights, hardtoed shoes. Each participant responsible for these, but the committee may be able to supply a few items.
Fee: \$35 — includes guide book, transportation, meals.
Limit: 60

Mississippi Delta Flights

Monday, May 24 — Wednesday, May 26
R. S. Saxena, Texaco
Seven flights, two hours each, pre-flight discussions.
Fee: \$52 — includes guide book and bus & air transportation.
Limit: 18 per flight

Geology of the Black Warrior Basin

Wednesday, May 26, 3:00 P.M. — Friday, May 28, late evening.
J. C. Ferm, U. So. Carolina and J. C. Horne, U. So. Carolina.
Fee: \$95 — includes guide book, transportation, lodging, lunches and a dinner.
Limit: 80

Carbonates of the Yucatan Peninsula

Wednesday, May 26, 1:00 p.M. — Sunday, May 30, 3:00 P.M.
Al Weidie, U.N.O. and Wm. C. Ward, U.N.O.
Isla Mujeres coral reef snorkeling, Quarternary diagensis, Chichen Itza and Tulum, Saturday night in Merida.
Planned with both you and your spouse in mind.
Fee: \$365 — includes guidebook, all transportation, lodging and tips, all meals for four days.
Limit: 74

Regional Geology and Mayon Ruins of Guatemala

Thursday, May 27, — Monday, May 31.
H. H. Wilson, L.L. & E. and W. P. Leutze, Arco
Fee: \$325 — includes guidebook, all transportation, lodging and meals outside of Guatemala City.
Limit: 32

PRUET & HUGHES COMPANY
1111 Capital Towers Building
Jackson, Mississippi 39201

PAUL ANTHONY RADZEWICZ
Oil Producer
1829 Deposit Gty. Bldg 969-3950 Jackson, Miss. 39201

RIDGWAYS

103 E. Pearl Street

Jackson, Mississippi

355-4751

RESPONSE TO PEER COMMITTEE CRITICISM

(The following is a letter responding to PEER Committee Criticism of the State Oil and Gas Board that was published late last month. Ed.)

January 29, 1976

Senator Con Maloney
Chairman, PEER Committee
Seante Chamber, State Capitol
Jackson, Mississippi

Dear Senator Maloney:

This letter is in response to the news item by AP reporter James Saggus on Wednesday, January 28th, regarding criticism of the State Oil and Gas Board by John Turcotte, coordinator of research for the PEER committee.

Quoting from the news item, Mr. Turcotte stated that the Board "had failed to effectively enforce the oil and gas laws and regulations."

I think this statement is patently untrue. I have been a professional petroleum geologist in Mississippi for 25 years, and have had continuous association with the staff as well as the Board members during the monthly hearings. Since I also operate oil wells in Louisiana, I have had numerous opportunities to compare the manner and efficiency with which the two oil commissions carry out their mandated functions.

With a fraction of the personnel that Louisiana has our Board has administered decisions with dispatch, intelligence and fairness, and the staff has very efficiently enforced the regulations covering the drilling and production operations of the oil industry.


This is not to say that there have not been failures in enforcing regulations. With 453 oil and gas fields, more than 3000 producing wells, and dozens of resident and non-resident oil field operators, one hundred percent enforcement would probably be impossible with a staff of ten times, or one hundred times, the present size.

I can assure you, however, that of all the oil field operations with which I have been involved in the past 25 years, none has escaped the examination or scrutiny of some member of the oil and gas board staff.

Criticism can be beneficial, but unfairly made it can also disrupt and even destroy a good organization. For this reason I want the PEER committee to know that many associates and colleagues of mine share my feelings that our Oil and Gas Board is a very effective and efficient state regulatory agency.

Very truly yours,

Verne Culbertson

SCHLUMBERGER WELL SERVICES	
Jackson, Mississippi	Phone 352-8589
 Seismograph Service Corporation A SUBSIDIARY OF RAYTHEON COMPANY P. O. Box 1590 • Tulsa, Okla. 74102 • (918) 627-3330 DISTRICT OFFICES AND DATA PROCESSING CENTERS HOUSTON • MIDLAND • DENVER • ALMA, MI.	
SOUTHERN NATURAL GAS CO.	
P. O. Box 1513 Donald R. Scherer, Dist. Geologist	Houston, Texas 622-7270
ROBERT L. THOMSEN	
1818 Capital Towers Jackson, Mississippi	P. O. Box 1847
WOOLF & MAGEE, INC.	
P. O. Box 3566 Tyler, Texas 75701	
J. W. Arnold, Pres.	Allen W. Woolf, Vice Pres.
W. D. Magee, Jr., Sec.-Treas.	A. B. Irion, Dir. Supt.
Tyler, TX AC 214 562-4051 — Natchez, MS AC 601 445-4570 Rotary Rigs in Texas, Louisiana, Arkansas, Mississippi and Alabama	
ROBERT WOMACK, JR.	
Consulting Geologist	
1509 Standard Life Bldg.	Jackson, Miss. 39201 Phone 353-4650
A & N PRODUCTING SERVICES, INC.	
709 Standard Life Building	P. O. Box 1669
Jackson, Mississippi 39205	
AMERICA SOUTHWEST CORP.	
Box 936, Jackson, Miss.	354-2513
Gulf Coast Drilling & Exploration	
THE ANALYSTS	
Core Analysis — Mud Logging Laurel — Ph. 649-3444	
Bunk Caldwell	Frank Howson
ATWATER, CARTER, MILLER & HEFFNER	
Consulting Geologists and Engineers 424 Whitney Bank Building New Orleans, Louisiana 70130 (501) 581-6527	
DAVID K. BROOKS	
660 Milner Building	Oil Exploration Jackson, Mississippi 948-5722
BROWNING & WELCH	
GEOLOGISTS Suite 1411, Standard Life Building Jackson, Mississippi 39201	

C & K PETROLEUM, INC.		
1800 Capital Towers Jackson, Mississippi 39201		601/948-1111
CALLON PETROLEUM CO.		
Box 1287		Natchez, Mississippi 39120
CAPITOL PRINTING & BLUE PRINT COMPANY		
330 East Rankin Street Jackson, Miss. 39202		353-2751
L. WICK CARY		
Room 932 National Bank of Commerce Bldg.	Consulting Geophysicist	Box 50391 New Orleans, La.
THOMAS H. CLEMENTS		
1378 Capital Towers Jackson, Mississippi 39201	Consulting Geophysicist	Phone 601/355-8724
CORE LABORATORIES, INC.		
Laurel 601/425-3394 Jackson 601/932-1492	Core Analysis and Well Logging	New Orleans 504/524-6256 Mobile 205/456-2271
CRAFT PETROLEUM CO., INC.		
Wyatt E. Craft		
Exploration		Operations
CRUDE OIL PURCHASING, INC.		
P. O. Box 22660 Jackson, Mississippi 39205		Phone 601 - 948-5853
DRESSER-ATLAS		
Jackson, Mississippi		948-5591
ENSERCH EXPLORATION COMPANY (Formerly Lone Star Producing Company)		
1530 Capital Towers Jackson, Mississippi 39205	Maurice N. Birdwell District Manager	P. O. Box 219 601 969-0100

HERBERT J. FERBER		
5456 Hartsdale Drive Jackson, Mississippi	Consulting Geophysicist	956-4666
FLORIDA GAS EXPLORATION CO.		
1444 Capital Towers Jackson, Mississippi 39201		
WADE FORTENBERY		
P. O. Box 1183 - Natchez, Miss. Office: Hwy. 61 South	Geologist	Bus. 442-6011 Res. 442-3250
JOSEPH F. FRITZ		
Jackson, Miss.	Petroleum Geologist	601/354-1134
H. LEROY FULGHUM		
257 Valley Vista Drive Jackson, Mississippi 39211	Consulting Geologist	601/956-6346
JAMES B. FURRH, JR.		
1236 Capital Towers Jackson, Mississippi	Oil Producer	
GEOPHYSICAL DATABANKS, INC.		
1234 Loyola Bldg. New Orleans, La. 70112		Room 303 504-581-4724
Grady Loftin Jim Malone CDP data available in the following area: Gulf Coast Appalachians Rockies Agents for Petroconsultants, S.A.		
GEOPHYSICAL FIELD SURVEYS, INC.		
Room 201 P. O. Box 12304, Colonial Station	Seismic Exploration 975 North Street	Jackson, MS 601/948-1580
GERMANY INVESTMENT CO.		
Norman G. Germany Dallas, Texas		E. Wilson Germany Natchez, Mississippi
GUARDIAN OIL COMPANY		
L. Graham Hughes 1636 Capital Towers		Charles S. McClelland Jackson, Mississippi
G. W. GULMON & ASSOCIATES		
H. E. Hansen, Dallas	Petroleum Geologist Natchez, Mississippi	A. T. Ricci, Jr., Natchez
CLAUDE B. HAMMILL		
2306 First Nat'l Bank Bldg.	Oil Operator	Houston, TX 77002

MISSISSIPPI GEOLOGICAL SOCIETY
P. O. BOX 422
JACKSON, MS 39205



William Gordon McGee
Lone Star Producing Co.
P. O. Box 219
Jackson, Miss. 39205

NEWS

BULLETIN

mississippi geological society



Vol. XXIII, No. 7, March, 1976

M.G.S. SPRING DANCE MARCH 20

The Mississippi Geological Society's Spring Dance will be held at the Colonial Country Club on Saturday, March 20. The dance, a semi-formal one, will feature Ed Butler's Band, doorprizes, hors d'oeuvres, and a free bar. The time is from 8:00 pm until — —.

Tickets are \$25.00 per couple and can be obtained from Dean Kebert in the First National Bank Building, Ronnie Tisdale in the Deposit Guaranty Building and Bill McGee in the Capital Towers Building.

CALENDAR

- | | |
|-------------|---|
| March 15 | J.G.S. Dinner Meeting
Primos Northgate, 5:30 P.M. |
| March 16 | M.G.S. Dinner Meeting
Primos Northgate, 6:00 P.M. |
| March 20 | M.G.S. Spring Dance
Colonial Country Club, 8:00 P.M. |
| March 25 | PETROLEUM AUXILIARY
Jackson Country Club, 11:30 P.M. |
| March 23—26 | AAPG—SEPM Annual Convention
New Orleans, La. |



DAVID RAY WILLIAMSON

LOCAL GEOLOGIST SPEAKER AT MARCH MEETING

David Ray Williamson, geologist with the Mississippi Geological Survey, will speak to the Mississippi Geological Society at Primos Northgate on March 16, 1975. His talk will be about the potential of lignite as a supplemental fuel source. David, a native of Jackson, has been with the Survey since 1972, when he received his B.S. in Geology from Millsaps. He is currently doing graduate work in geology at the University of Southern Mississippi. David's work with the Survey has been concerned primarily with the surface mapping of Clarke County and investigation of Tertiary lignites of Mississippi. He is a member of the Mississippi Academy of Science and the National Speleological Society.

MARCH SPONSORS

XAVIER M. FRASCOGNA
PEMA OIL COMPANY
PRUET AND HUGHES COMPANY
GEOMAP COMPANY

MISSISSIPPI GEOLOGICAL SOCIETY

OFFICERS

Jerry E. Zoble	President	Consultant
Elwood Ruhl	1st Vice Pres.	Florida Gas Exp.
Jim White	2nd Vice Pres.	Marr Co.
David Cate	Secretary	Florida Gas Exp.
Sarah Childress	Treasurer	Miss. Geo. Survey
W. E. Taylor	Past President	Consultant

DELEGATES

J. B. Goldman, Jr.	A.A.P.G.	Florida Gas Exp.
Philip R. Reeves	A.A.P.G.	Cities Service Oil
Kevin Cahill	G.C.A.G.S.	Shenandoah Oil

COMMITTEES AND CHAIRMEN

AAPG Membership	J. B. Goldman, Jr. & Philip R. Reeves
AAPG Public Information	Verne L. Culbertson
Entertainment	T. C. Rader
Golf	James L. Cummings
Nomenclature	James Bollman
Program	John D. Myers
Projection	Ronald Tisdale
Publicity	Verne L. Culbertson

NEWS BULLETIN STAFF

Editor	Bill McGee
Asst. Editor	Les Aultman
Advertising Mgr.	Paul Day
Petroleum Auxiliary	Virginia Force
Geophysics	Don Smith
Land	Rip Mason
Photographer	David Williamson
Progress	Don Beal

WELCOME NEW MEMBER

KIPP FERNS

CITIES SERVICE

LOCATION SAMPLE SERVICE, INC.
 Bob Legate
 Jackson, Mississippi
 932-1410

MILLER OIL PURCHASING CO.
 A Division of Ergon, Inc.

P. O. Box 1308 Jackson, Mississippi 39205

President's Notes —

For those of you who missed the NASA tour at Bay St. Louis on February 27th, you goofed! It was extremely interesting and educational. Your Society is sufficiently impressed by the facilities and data available in The National Space Technology Laboratories that Don Turner, our new Chairman of Continuing Education, has arranged for a working seminar sometime in September. If you are interested either contact Don or me as soon as possible, because the number of people they can handle in a session is limited.

You will note elsewhere in the bulletin that we have firmed our Spring Dance plans and I hope that you will attend this gala affair. We have obtained the services of the best band in Jackson, we have some fantastic hors d'oeuvres, and drinks free all evening. Tickets will be available from Dean Kebert, Ronnie Tisdale and Bill McGee.

The AAPG has requested of the Mississippi Geological Society 2 or 3 judges for the papers to be presented at the Convention in May. If you are going and would be willing to act as a judge for a one-half day session, please let me know immediately.

Jerry Zoble

<p>MOON-HINES Robert M. Moon 601-354-3753 E. R. Hines, Jr. 1804 Capital Towers Jackson, Mississippi 39201</p>
<p>M. D. (Dale) MYERS CONSULTANT GEOLOGIST Phone (601) 355-3536</p>
<p>OIL WELL LOGGING, INC. P. O. Box 16039 - Jackson, Mississippi 354-3642</p>
<p>MARVIN L. OXLEY 134 South Lamar St 601/969-4149 Jackson, Miss. 39201 601/956-6446</p>
<p>MORTON M. PHILLIPS Petroleum Geologist 902 Milner Bldg. Ph. 355-3364 Jackson, Miss. 39201 Ph. 366-9665</p>
<p>WILLIAM H. PLAYER & ASSOCIATES P. O. Box 1383 108 Wall St. Natchez, MS</p>
<p>PRUET & HUGHES COMPANY 1111 Capital Towers Building Jackson, Mississippi 39201</p>
<p>PAUL ANTHONY RADZEWICZ Oil Producer 1829 Deposit Gty. Bldg 969-3950 Jackson, Miss. 39201</p>

APOLOGY TO ISBELL

The advertisement of George Isbell was inexplicably omitted in the last couple of Bulletins. This is to apologize to George, and assure him that all ads will be checked more closely in succeeding Bulletins. (Editor)

RIDGWAYS	
103 E. Pearl Street	355-4751
Jackson, Mississippi	
SCHLUMBERGER WELL SERVICES	
Jackson, Mississippi	Phone 352-8589

GCAGS CALL FOR PAPERS

The next GCAGS convention will be held October 13-15, 1976, in Shreveport, Louisiana. The Program Committee is now considering papers for presentation at that convention. If you have a paper, or know of one, that you believe will be of interest and importance to geologists of the Gulf Coast area, contact:

Arthur H. Trowbridge
Program Chairman
P. O. Box 5424
Shreveport, La. 71105

SCHLUMBERGER WELL SERVICES	
Jackson, Mississippi	Phone 352-8589
 Seismograph Service Corporation <small>A SUBSIDIARY OF RAYTHEON COMPANY</small> <small>P. O. Box 1590 • Tulsa, Okla. 74102 • (918) 627-3330</small> <small>DISTRICT OFFICES AND DATA PROCESSING CENTERS</small> <small>HOUSTON • MIDLAND • DENVER • ALMA, MI</small>	
SOUTHERN NATURAL GAS CO.	
P. O. Box 1513	Houston, Texas
Donald R. Scherer, Dist. Geologist	622-7270
ROBERT L. THOMSEN	
1818 Capital Towers	P. O. Box 1847
Jackson, Mississippi	
WOOLF & MAGEE, INC.	
P. O. Box 3566 Tyler, Texas 75701	
J. W. Arnold, Pres.	Allen W. Woolf, Vice Pres.
W. D. Magee, Jr., Sec.-Treas.	A. B. Irion, Drig. Supt.
Tyler, TX AC 214 562-4051 - Natchez, MS AC 601 445-4570	
Rotary Rigs in Texas, Louisiana, Arkansas, Mississippi and Alabama	

AAPG CONVENTION NEWS

The New Orleans Geological Society will host the AAPG-SEPM Annual Convention May 23-26, 1976. The Meeting promises to be one of the best, and probably one of the biggest, sponsored by the societies in many years.

More than 250 technical papers will be presented in 34 sessions, in addition to the 50+ papers to be presented in the new Poster Sessions on Tuesday and Wednesday. Six exciting field trips have been planned, two of which will be conducted outside U. S. boundaries. There will be three short courses on Saturday and Sunday in addition to the usual SEPM Research Colloquia. And, for fun, there is a long list of entertainment activities; especially, note the Tuesday evening cruise down the mighty Mississippi on board the S. S. President and the Wednesday All-Convention Luncheon. To insure availability of tickets to these special events, be sure to sign up early.

A small supply of the Announcement booklets which include Hotel Reservation as well as the Advance Registration and Field Trips Reservation Forms will be sent to the society president within a few weeks for distribution at one of your upcoming meetings.

We plan to have an Employment Interviews Center at the Convention. Several good positions need to be filled and a large turnout for this Convention is expected. If any firm is interested in participating, they should contact:

James S. Classen
Southport Exploration, Inc.
1360 Saratoga Building
New Orleans, Louisiana 70112
(504) 586-9227

Geologists possibly interested in changing jobs should register beginning at 8:00 a.m. on Monday morning, May 24, on the second floor of the Headquarters Hotel, Braniff Place.

Times are good and opportunity abounds. We hope our fellow geologists can utilize these services to further their professional careers.

ROBERT WOMACK, JR.	
Consulting Geologist	
1509 Standard Life Bldg.	Jackson, Miss. 39201
Phone 353-4650	
A & N PRODUCING SERVICES, INC.	
709 Standard Life Building	P. O. Box 1669
Jackson, Mississippi 39205	
AMERICA SOUTHWEST CORP.	
Box 936, Jackson, Miss.	354-2513
Gulf Coast Drilling & Exploration	

**LIGNITE EXPLORATION
IN MISSISSIPPI**
By David Ray Williamson
Mississippi Geological Survey
Jackson, Mississippi

1976 ROCKY MOUNTAIN COAL SYMPOSIUM

APRIL 26 & 27

ABSTRACT

Lignite, a low-rank, brownish-black coal, intermediate in coalification between peat and subbituminous coal, is present in the Tertiary sediments of Mississippi in potential commercial quantity and quality.

Lignite, in Mississippi, is found principally in sediments of the Wilcox Group. Lignite also occurs to a lesser degree in other stratigraphic horizons in the State. Private industry has concentrated its lignite exploration efforts in Mississippi on the Wilcox trend.

To date at least six companies have conducted lignite exploration programs in the State. Many other companies have had representatives in the State putting together information on the lignite resources in anticipation of drilling programs. The Mississippi Geological Survey has processed approximately 300 requests for information concerning the State's lignite deposits since mid 1973.

It is estimated that about 400,000 acres have been leased for lignite exploration in Mississippi as of January, 1976. The leasing of acreage for lignite exploration and the conversion of contracts into coal leases has provided an economic boost to many Mississippians.

Lignite has a future in the economic growth of Mississippi as a potential supplementary fuel source. Lignite may be used as a feed stock for either gasification plants (SNG) or steam electric generating stations. Lignite also has limited use in the fertilizer and drilling mud industries.

The Colorado Geological Survey and the Colorado School of Mines are sponsoring the "1976 Symposium on the Geology of Rocky Mountain Coal," to be held at the Green Center, Colorado School of Mines, on April 26 and 27. This timely 2-day meeting, the first of its kind to be held in recent years, is designed primarily for the geologist exploring for and developing the vast coal resources of the Rocky Mountain West, from Montana to New Mexico.

Planned in-depth presentations will include basic coal geology and geochemistry (both general and topical), exploration methods and tools (including coal analysis, geophysical surveys, and well-log interpretation), and various aspects of coal mining and utilization (such as mined-land reclamation, mine design and engineering, and computer applications). Ample time for discussion of the papers presented will be scheduled for each day.

In addition, exhibits of coal information resources will be displayed by various agencies and organizations.

The Rocky Mountain Association of Geologists, Denver Coal Club, U. S. Geological Survey, and U. S. Bureau of Mines are lending their full support to this conference.

For further information, contact:

D. Keith Murray, Symposium Co-Chairman
Colorado Geological Survey
254, Columbine Building
1845 Sherman Street
Denver, Colorado 80203
Phone: (303) 892-2611

THE ANALYSTS

Core Analysis - Mud Logging
Laurel - Ph. 649-3444

Bunk Caldwell

Frank Howson

ATWATER, CARTER, MILLER & HEFFNER

Consulting Geologists and Engineers
424 Whitney Bank Building
New Orleans, Louisiana 70130
(501) 581-6527

DAVID K. BROOKS

660 Milner Building Oil Exploration Jackson, Mississippi
948-5722

**BROWNING & WELCH
GEOLOGISTS**

Suite 1411, Standard Life Building
Jackson, Mississippi 39201

C & K PETROLEUM, INC.

1800 Capital Towers 601/948-1111
Jackson, Mississippi 39201

CALLON PETROLEUM CO.

Box 1287 Natchez, Mississippi 39120

CAPITOL PRINTING & BLUE PRINT COMPANY

330 East Rankin Street 353-2751
Jackson, Miss. 39202

PROGRESS

Mississippi Completions —

Exploratory	Oil	Gas	Dry
Eocene	0	0	21
UK	1	0	2
LK	0	2	2
Jurassic	0	0	6
Paleozoic	0	0	0

Development	Oil	Gas	Dry
Eocene	4	0	7
UK	5	0	0
LK	1	3	1
Jurassic	0	0	1
Paleozoic	0	1	0

New Field Discoveries

- Kola** Pruet & Hughes and Aquitaine Oil Corp.
 No. 1 A. O. Myers
 Section 5-7N-15W, Covington County
 1PF13035-13049 (Rodessa)
 24BC & 1180 MCFGPD, 10/64", TP2420
 1P 14361 - 14494' O. A. (Sligo)
 16BC & 190 MCFGPD, 24/64", TP75 Lb
- Mt. Olive** Pruet & Hughes and Aquitaine Oil Corp.
 No. 1 Stroud Heirs 31 - 13, Smith Coun.
 1P13585-13660 O.A. (Sligo)
 56BC & 1420MCFGPD, 14/64", TP1910
- Quentin** Gemany - Gulmon
 No. 1 Brookhaven Bank & Trust
 1P 10658' - 10666' (low Tuscaloosa)
 158BOPD, 7/64", TP1355 Lb.

L. WICK CARY		
Room 932	Consulting Geophysicist	Box 50391
National Bank of Commerce Bldg.		New Orleans, La.
THOMAS H. CLEMENTS		
Consulting Geophysicist		
1378 Capital Towers	Phone 601/355-8724	
Jackson, Mississippi 39201		
CORE LABORATORIES, INC.		
Core Analysis and Well Logging		
Laurel		New Orleans
601/425-3394		504/524-6256
Jackson		Mobile
601/932-1492		205/456-2271
CRAFT PETROLEUM CO., INC.		
Wyatt E. Craft		
Exploration		Operations

CRUDE OIL PURCHASING, INC.		
P. O. Box 22660		Phone 601 - 948-5853
Jackson, Mississippi 39205		
DRESSER-ATLAS		
Jackson, Mississippi		948-5591
ENSERCH EXPLORATION COMPANY (Formerly Lone Star Producing Company)		
Maurice N. Birdwell District Manager		
1530 Capital Towers		P. O. Box 219
Jackson, Mississippi 39205		601 969-0100
HERBERT J. FERBER		
Consulting Geophysicist		
5456 Hartsdale Drive		956-4666
Jackson, Mississippi		
FLORIDA GAS EXPLORATION CO.		
1444 Capital Towers Jackson, Mississippi 39201		
WADE FORTENBERY		
Geologist		
P. O. Box 1183 - Natchez, Miss.		Bus. 442-6011
Office: Hwy. 61 South		Res. 442-3250
JOSEPH F. FRITZ		
Petroleum Geologist		
Jackson, Miss.		601/354-1134
H. LEROY FULGHUM		
Consulting Geologist		
257 Valley Vista Drive		601/956-6346
Jackson, Mississippi 39211		
JAMES B. FURRH, JR.		
Oil Producer		
1236 Capital Towers		Jackson, Mississippi
GEOPHYSICAL DATABANKS, INC.		
1234 Loyola Bldg.		Room 303
New Orleans, La. 70112		504-581-4724
Grady Loftin Jim Malone		
CDP data available in the following area:		
Gulf Coast Appalachians Rockies		
Agents for Petroconsultants, S.A.		
GEOPHYSICAL FIELD SURVEYS, INC.		
Seismic Exploration		
Room 201	975 North Street	Jackson, MS
P. O. Box 12304, Colonial Station		601/948-1580
GERMANY INVESTMENT CO.		
Norman G. Germany		E. Wilson Germany
Dallas, Texas		Natchez, Mississippi
GUARDIAN OIL COMPANY		
L. Graham Hughes		Charles S. McClelland
1636 Capital Towers		Jackson, Mississippi
G. W. GULMON & ASSOCIATES		
Petroleum Geologist		
Natchez, Mississippi		
H. E. Hansen, Dallas		A. T. Ricci, Jr., Natchez
CLAUDE B. HAMMILL		
Oil Operator		
2306 First Nat'l Bank Bldg.		Houston, TX 77002

W. L. HARPER Geophysical Consultant	
115 Sterling Towers	Jackson, Miss. 39202 Phone 601-352-3339
GEORGE H. ISBELL, JR. Geologist	
1240 Capitol Towers	Phone: (601) 948-4881
ALAN JACKSON	
Consulting Geologist 503 Mandalay Drive	Telephone 601-582-1192 Hattiesburg, Mississippi 39401
ROBERT R. JACOBS Petroleum Geologist	
P. O. Box 16263	Jackson, Mississippi 39206 362-4846
JUSTISS-MEARS OIL CO., INC.	
P. O. Drawer "N"	Jena, Louisiana 71342 (318) 992-4000
H. E. KARGES Consulting Geologist	
1812 Capital Towers Phone 352-0972	P. O. Box 1635 Jackson, Miss. 39205

K. B. KEARY, JR. Petroleum Geologist	
439 W. Northside Dr.	Jackson, MS 39206 362-4895
WILBUR H. KNIGHT Consulting Geologist	
1017 First Nat'l Bank Bldg.	Jackson, Miss. 355-1528
HILTON L. LADNER Petroleum Geologist	
903 FNB Building	Jackson, Mississippi 354-3616
LARCO DRILLING COMPANY, INC.	
Suite 1700 Capital Towers	Jackson, Miss. 39201 Phone 355-1542
R. E. Dick LEE AND ASSOCIATES	
The Redd Building P. O. Box 5168	4443 I-55 North Jackson, MS 39216

MISSISSIPPI GEOLOGICAL SOCIETY
P. O. BOX 422
JACKSON, MS 39205

NEWS

BULLETIN

mississippi geological society



Vol. XXIII, No. 8, April, 1976

M.G.S. "LADIES NIGHT" FEATURE: CAJUN HUMORIST



Bud Fletcher

BUD FLETCHER GUEST SPEAKER AT M.G.S.

Bud Fletcher, Louisiana's answer to Mississippi's Jerry Clower, will provide the subject matter for the April 27 meeting of the Mississippi Geological Society. Fletcher, a native of Lafayette, is well known for his droll Cajun humor, and he is expected to be a distinct change of pace from our usually more technically-oriented sessions.

The primary reason for Fletcher's appearance is that the April meeting has been designated "Ladies Night." For the most part, M.G.S. meetings have been stag affairs; this meeting will be primarily for our distaff side. In addition, there will be a door prize that will be a beautiful attraction in the winner's home.

Because of the nature of the meeting, the starting time also is unusual — 7:00 p.m. for the happy hour. Dinner will be served at 7:45 p.m. Obviously, reservations are doubly important for this meeting. Remember that you have a definite effect on Primos' service — if you and your lady arrive without reservations, there could be delays as well as less-than-optimum service.

CALL T.C. RADER, AT 948-4128, FOR YOUR RESERVATIONS BY FRIDAY, APRIL 23.

SPONSORS FOR APRIL MEETING

WYATT CRAFT
JACK DANIEL
FLORIDA GAS

HALLIBURTON
HUNT ENERGY
JUSTISS-MEARS

CALENDAR

APRIL 19	JACKSON GEOPHYSICAL SOCIETY Primos Northgate, 5:30 P.M.
APRIL 27	MISS. GEOLOGICAL SOCIETY Primos Northgate, 7:00 P.M.
APRIL 30	PETROLEUM AUXILIARY Northpoint Barn, 7:00 P.M.
MAY 23-26	AAPG ANNUAL CONVENTION New Orleans, Louisiana

MISSISSIPPI GEOLOGICAL SOCIETY

OFFICERS

Jerry E. Zoble	President	Consultant
Elwood Ruhl	1st Vice Pres.	Florida Gas Exp.
Jim White	2nd Vice Pres.	Marr Co.
David Cate	Secretary	First Miss.
Sarah Childress	Treasurer	Miss. Geo. Survey
W. E. Taylor	Past President	Consultant

DELEGATES

J. B. Goldman, Jr.	A.A.P.G.	Florida Gas Exp.
Philip R. Reeves	A.A.P.G.	Cities Service Oil
Kevin Cahill	G.C.A.G.S.	First Miss.

COMMITTEES AND CHAIRMEN

AAPG Membership	J. B. Goldman, Jr. & Philip R. Reeves
AAPG Public Information	Verne L. Culbertson
Continuing Education	Don Turner
Entertainment	T. C. Rader
Golf	James L. Cummings
Job Placement	Larry Boland
Nomenclature	James Bollman
Program	John D. Myers
Projection	Ronald Tisdale
Publicity	Verne L. Culbertson

NEWS BULLETIN STAFF

Editor	Bill McGee
Asst. Editor	Les Aultman
Advertising Mgr.	Paul Day
Petroleum Auxiliary	Virginia Force
Geophysics	Don Smith
Land	Rip Mason
Photographer	David Williamson
Progress	Don Beal

WILLIAM H. PLAYER & ASSOCIATES

P. O. Box 1383
108 Wall St. Natchez, MS

PRUET & HUGHES COMPANY

1111 Capital Towers Building
Jackson, Mississippi 39201

PAUL ANTHONY RADZEWICZ

Oil Producer
1829 Deposit Gty. Bldg 969-3950 Jackson, Miss. 39201

DISTINGUISHED LECTURER TO SPEAK TO JGS

The speaker at the Jackson Geophysical Society's April 19 meeting will be Dr. Franklin K. Levin, Geophysical Research Scientist with Exxon in Houston. The 1976 Distinguished Lecturer for SEG, Dr. Levin, will present an "Overview of Velocity Analysis". Be sure to call your reservations in to 982-0272.

PRESIDENT'S NOTES—

For the 15 couples that attended the M.G.S. Spring Dance, I would like to thank the membership for the great party they threw us. The food was excellent, the music great and the fellowship was superb. We predicated the price of tickets on the basis that if we had at least 30 couples we should break even. I think, even those of you who are not mathematicians will see that your society was stuck with a good deal of the cost.

Over the past few years, we often get a little static from the wives, because we have two barbeques annually, as well as, seven monthly meetings and yet we never include the wives in any of our programs. Your executive committee decided it was time to do something about that, so you will find elsewhere in this bulletin the announcement of the April meeting, which is "Ladies Night." Our guest speaker will be Bud Fletcher, a Cajun Jerry Clower, so that it ought to be a fun evening. If we have a good response to this program, it could become an annual event. Please call T. C. Rader 948-4128, right now and make your reservations so we can make a reasonable estimate as to how many we can plan on.

Jerry Zoble

RIDGWAYS

103 E. Pearl Street
Jackson, Mississippi

355-4751

SCHLUMBERGER WELL SERVICES

Jackson, Mississippi

Phone 352-8589

WELCOME NEW MEMBERS

JACK MOODY — Shenandoah Oil Corp.
ERNEST OTTO — Sun Oil Co.
FRANK BELL — Geophysical Field Surveys



Seismograph Service Corporation
A SUBSIDIARY OF RAYTHEON COMPANY

P O. Box 1590 • Tulsa, Okla. 74102 • (918) 627-3330
DISTRICT OFFICES AND DATA PROCESSING CENTERS
HOUSTON • MIDLAND • DENVER • ALMA, MI.

SHORT COURSES ANNOUNCED

Various organizations are now offering short courses that should be of interest to our membership. The courses are designed to help meet the continuing education needs of geoscientists, and one or more of them could benefit each of us. The following is a short description of some of the courses.

Petroleum Exploration. Sponsor: AAPG—SEG. Stresses detailed treatment of facies and structural geology as applied in petroleum exploration, after discussions of broader aspects of basin geology and stratigraphy. Also, stressed are the most current and useful geophysical, logging, and computer techniques and their applications. Economics and land acquisition, too, are treated. Length: two weeks. Locations and dates: Dallas, September 27—October 8, 1976; New Orleans, January 17—28, 1977; Houston, April 18—20, 1977. Cost: \$525.00 (AAPG &/or SEG members); does not include living costs.

Stratigraphic Interpretation of Seismic Data. Sponsor: AAPG—SEG. Stresses interpretation of depositional environments, identification of sandstone, shale, carbonate, and evaporite-prone areas, and prediction of lithology, hydrocarbons, and bed spacing. Seismic expressions of different types of stratigraphic traps and clues for their recognition also will be treated. Length: one week. Location and dates: Vail, Colorado, July 12—16, 1976. Cost: \$325.00 (AAPG &/or SEG members); does not include living costs.

Applied Geophysics for Geologists. Sponsor: University of Houston Geology Foundation. Stresses lectures and workshops dealing with structural, stratigraphic, depositional, and lithologic interpretations from reflection data, with reviews of "bright spot" techniques, filter selection, and lectures on gravity and magnetics. For lagniappe, there will be a one-day geological field trip through the lower Brazos Valley and along the coast to observe recent Gulf Coast sedimentation. Length: one and one half weeks. Location and dates: Houston, May 10—21, 1976. Cost: \$625.00, does not include living costs.

Geology of Marine Environments. Sponsor: Rosenstiel School, University of Miami. Primarily for students and teachers, stresses comprehensive introduction to the major shallow marine environments of southern Florida from coastal mangrove swamps to coral reefs, and the interrelationships of organisms and carbonate sediments. Includes lectures, workshops, and field trips. Length: four weeks. Location and dates: Miami, June 6—2, 1976. Cost: \$575, does not include optional \$10.00 per day room and board.



SOUTHERN NATURAL GAS CO.	
P. O. Box 1513 Donald R. Scherer, Dist. Geologist	Houston, Texas 622-7270
ROBERT L. THOMSEN	
1818 Capital Towers Jackson, Mississippi	P. O. Box 1847
WOOLF & MAGEE, INC.	
P. O. Box 3566 Tyler, Texas 75701	
J. W. Arnold, Pres. W. D. Magee, Jr., Sec.-Treas. Tyler, TX AC 214 562-4051	Allen W. Woolf, Vice Pres. A. B. Irion, Dir. Supt. MS AC 601 445-4576
Rotary Rigs in Texas, Louisiana, Arkansas, Mississippi and Alabama	
ROBERT WOMACK, JR.	
Consulting Geologist	
1509 Standard Life Bldg.	Jackson, Miss. 39201
Phone 353-4650	

STYLE SHOW FEATURED AT AUXILIARY MEETING

Lovely baskets of spring flowers were centered on each table with a huge arrangement at the head table to add to the beauty of the style show that was held at the Jackson Country Club.

The Petroleum Auxiliary presented a luncheon-style show and hostesses were Mrs. Roger Dickerson, Chairman, Mrs. Marcial Forester, Mrs. Steve Dennis, Mrs. Verne L. Culbertson, Mrs. Jerry Zoble and Mrs. Jeff Tucker.

Mrs. Steve Dennis gave the invocation.

Mrs. J. W. Twiner, Mrs. Norwood Varnado and Mrs. John Knoke received door prizes.

Clothing from Maison-Weiss was modeled by Mrs. Jeff Tucker, Mrs. Benton Vernon, Mrs. Marcial Forester, Mrs. Riley Hagan, Mrs. Mike Pryor, Mrs. Donald Smith, Mrs. Bill Mason, Mrs. Joe Hildebrand, Mrs. Rodney Jeffreys, Mrs. Dave Gammill, Mrs. S. Reagan Coleman and Mrs. Donald Fowler.

The Auxiliary's next meeting will be held at the Northpoint Barn on April 30. This will be the Couples Barbeque, and will start at 7:00 p.m.

A & N PRODUCING SERVICES, INC.	
709 Standard Life Building	P. O. Box 1669
Jackson, Mississippi 39205	
AMERICA SOUTHWEST CORP.	
Box 936, Jackson, Miss. Jack Pryor, Jr., Exec. V.P.	354-2513 Charlie Barton, Geol. - Land

BYLAW AMENDMENT PASSES

The Mississippi Geological Society Bylaws were amended recently to provide for a President-Elect position. Ballots were mailed to members and those who voted favored the amendment 53 to 3. Article IV, Section III (a) formerly read as follows:

The First Vice President shall assume the office of the President in case of a vacancy from any cause in that office, and shall assume the duties of the President in case of the absence or disability of the latter. He shall be at the disposal of the President for any duty necessary to the proper functioning of the Society.

It now reads as follows:

The First Vice President shall also be designated President-Elect and shall automatically, without election, assume the office of the President during the fiscal year following the year of his election as First Vice President. During his elected year as First Vice President, he shall assume the duties of the current President in case of a vacancy for any cause in that office and shall assume the duties of the current President in case of the absence or disability of the latter. He shall also be at the disposal of the current President for any duty necessary to the proper functioning of the Society.

At the spring barbeque in May, members will vote for both a President and First Vice President, President-Elect for the fiscal year June 1, 1976, to May 31, 1977. The President-Elect will then automatically assume the presidency for the fiscal year 1977-78.

THE ANALYSTS

Core Analysis - Mud Logging
Laurel - Ph. 649-3444

Bunk Caldwell

Frank Howson

ATWATER, CARTER, MILLER & HEFFNER
Consulting Geologists and Engineers
424 Whitney Bank Building
New Orleans, Louisiana 70130
(501) 581-6527

(501) 581-6527		
DAVID K. BROOKS		
660 Milner Building	Oil Exploration	Jackson, Mississippi
948-5722		
BROWNING & WELCH		
GEOLOGISTS		
Suite 1411, Standard Life Building		
Jackson, Mississippi 39201		

NEWS FROM MEMBERS

Several members of the society recently have announced changes of affiliation and or address. Kevin Cahill has made the switch from Shenandoah to First Mississippi Corporation. David Cate, too, has joined First Mississippi after leaving Florida Gas. Marshall Kern elected to go independent when Marr's office here closed. Also, joining the independent ranks is Harry Spooner, who previously was with Pruet and Hughes. Jim White accepted the transfer to Dallas with Marr Company. Phil Reeves has moved to Pruet and Hughes from Cities Service. Another transferee to Dallas is Chuck Erwin, with Enserch; Chuck has been promoted to District Geologist for the Dallas East exploration district.

With all this personnel activity, it seems business may be brisk for Larry Boland, the society's Job Placement Committee Chairman.

C & K PETROLEUM, INC.		
1800 Capital Towers		601/948-1111
Jackson, Mississippi 39201		
CALLON PETROLEUM CO.		
Box 1287		Natchez, Mississippi 39120
CAPITOL PRINTING & BLUE PRINT COMPANY		
330 East Rankin Street		353-2751
Jackson, Miss. 39202		
L. WICK CARY		
Room 932	Consulting Geophysicist	Box 50391
National Bank of Commerce Bldg.		New Orleans, La.
THOMAS H. CLEMENTS		
Consulting Geophysicist		
1738 Capital Towers		Phone 601/355-8724
Jackson, Mississippi 39201		
CORE LABORATORIES, INC.		
Core Analysis and Well Logging		
Laurel		New Orleans
601/425-3394		504/524-6256
Jackson		Mobile
601/932-1492		205/456-2271
CRAFT PETROLEUM CO., INC.		
Wyatt E. Craft		
Exploration		Operations

CRUDE OIL PURCHASING, INC.	
P. O. Box 22660	Phone 601 - 948-5853
Jackson, Mississippi 39205	
DRESSER-ATLAS	
Jackson, Mississippi	948-5591
ENSERCH EXPLORATION COMPANY	
Maurice N. Birdwell District Manager	
1530 Capital Towers Jackson, Mississippi 39205	P. O. Box 219 601 969-0100
HERBERT J. FERBER Consulting Geophysicist	
5456 Hartsdale Drive Jackson, Mississippi	956-4666
FLORIDA GAS EXPLORATION CO.	
1444 Capital Towers Jackson, Mississippi 39201	
WADE FORTENBERY Geologist	
P. O. Box 1183 - Natchez, Miss. Office: Hwy. 61 South	Bus. 442-6011 Res. 442-3250
JOSEPH F. FRITZ Petroleum Geologist	
Jackson, Miss.	601/354-1134
H. LEROY FULGHUM Consulting Geologist	
257 Valley Vista Drive Jackson, Mississippi 39211	601/956-6346
JAMES B. FURRH, JR. Oil Producer	
1236 Capital Towers	Jackson, Mississippi
GEOPHYSICAL DATABANKS, INC.	
1234 Loyola Bldg. New Orleans, La. 70112	Room 303 504-581-4724
Grady Loftin Jim Malone CDP data available in the following area: Gulf Coast Appalachians Rockies Agents for Petroconsultants, S.A.	
GEOPHYSICAL FIELD SURVEYS, INC. Seismic Exploration	
Room 201 P. O. Box 12304, Colonial Station	975 North Street Jackson, MS 601/948-1580
GERMANY INVESTMENT CO.	
Norman G. Germany Dallas, Texas	E. Wilson Germany Natchez, Mississippi
GUARDIAN OIL COMPANY	
L. Graham Hughes 1636 Capital Towers	Charles S. McClelland Jackson, Mississippi
G. W. GULMON & ASSOCIATES Petroleum Geologist	
H. E. Hansen, Dallas	Natchez, Mississippi A. T. Ricci, Jr., Natchez
CLAUDE B. HAMMILL Oil Operator	
2306 First Nat'l Bank Bldg.	Houston, TX 77002

W. L. HARPER Geophysical Consultant	
115 Sterling Towers	Jackson, Miss. 39202
Phone 601-352-3339	
GEORGE H. ISBELL, JR. Geologist	
1240 Capitol Towers	Phone: (601) 948-4881
ALAN JACKSON Consulting Geologist	
503 Mandalay Drive	Telephone 601-582-1192 Hattiesburg, Mississippi 39401
ROBERT R. JACOBS Petroleum Geologist	
P. O. Box 16263	Jackson, Mississippi 39206
362-4846	

PROGRESS

Mississippi Completions - February, 1976

Exploratory	Oil	Gas	Dry
Eocene	0	0	17
UK	2	0	1
LK	0	1	2
Jurassic	0	0	1
Paleozoic	0	0	0

Development	Oil	Gas	Dry
Eocene	0	0	4
UK	1	0	1
LK	0	1	0
Jurassic	2	0	0
Paleozoic	0	1	1

New Discoveries

Unnamed	Tesoro Pet. Corp, No. 1 Slayton-Travis Unit Section 4-1N-7E, Pike Co. 1PP 11,406' - 11,414' (Lwr. Tusc.) 130 BOPD, 35°
Unnamed	System Fuels, Inc., Harris - Bianchi Hewitt No. 1 Hall 7 - 10 Section 7-7N-19W, Jefferson Davis 1PF 15,550' - 15,560' (Hosston) 4129 MCFGPD, 33 BCPD, 18/64''
Ladds Branch	Wyatt E. Craft No. 1 Stokes Section 32-7N-4E, Franklin Co. 1PF 10,729' - 10,735' (Lwr. Tusc.) 218 BOPD, 7/64'', TP1500 lb.

JUSTISS-MEARS OIL CO., INC.	
P. O. Drawer "N"	Jena, Louisiana 71342
(318) 992-4000	

H. E. KARGES Consulting Geologist	
1812 Capital Towers Phone 352-0972	P. O. Box 1635 Jackson, Miss. 39205
K. B. KEARY, JR. Petroleum Geologist	
439 W. Northside Dr. Jackson, MS 39206	362-4895
WILBUR H. KNIGHT Consulting Geologist	
1017 First Nat'l Bank Bldg.	Jackson, Miss. 355-1528
HILTON L. LADNER Petroleum Geologist	
903 FNB Building Jackson, Mississippi	354-3616
LARCO DRILLING COMPANY, INC.	
Suite 1700 Capital Towers	Jackson, Miss. 39201 Phone 355-1542
R. E. Dick LEE AND ASSOCIATES	
The Redd Building P. O. Box 5168	4443 I-55 North Jackson, MS 39216
LOCATION SAMPLE SERVICE, INC. Bob Legate Jackson, Mississippi 932-1410	

MILLER OIL PURCHASING CO. A Division of Ergon, Inc.	
P. O. Box 1308	Jackson, Mississippi 39205
MOON-HINES	
Robert M. Moon 1804 Capital Towers	E. R. Hines, Jr. 601-354-3753 Jackson, Mississippi 39201
M. D. (Dale) MYERS CONSULTANT GEOLOGIST Phone (601) 355-3536	
OIL WELL LOGGING, INC.	
P. O. Box 16039 - Jackson, Mississippi	354-3642
MARVIN L. OXLEY	
134 South Lamar St Jackson, Miss. 39201	601/969-4149 601/956-6446
MORTON M. PHILLIPS Petroleum Geologist	
902 Milner Bldg.	Ph. 355-3364 Jackson, Miss. 39201 Ph. 366-9665

MISSISSIPPI GEOLOGICAL SOCIETY
P. O. BOX 422
JACKSON, MS 39205

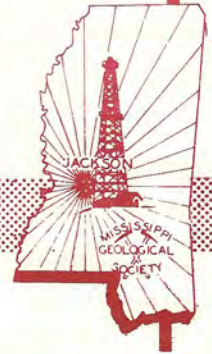
AAPG



NEWS

BULLETIN

mississippi geological society



VOL. XXIII, No. 9, May, 1976

ELECTION AND BARBECUE - JUNE 1

BARBECUE AT FOWLER LODGE

The annual spring barbecue for the M.G.S. will be held at Fowler Buick lodge on Tuesday, June 1. The lodge will open at 4:30 P.M.; beer and barbecued sausage hors d'oeuvres will be available then, and dinner will be served at 6:30 P.M. There is no charge, but reservations are a must, so call *T. C. Rader's* office at 948-4128, no later than noon, Monday, May 31.

Fortunately, *T. C. Rader* and *Daddy-O Phillips* are ramrodding the barbecue again. The menu includes barbecued beef, ribs, ham steaks, and beans, plus potato salad, olives, pickles, etc.; coffee and tea will also be available. As usual, *T. C.* could use some help on the day of the barbecue; if you can, give him a call.

Directions to the lodge are: take I-55 North out of Jackson to the Tougaloo exit; follow Frontage Road north to County Line Road; go east to intersection with Old Canton Road, then left on Old Canton Road for 1 1/2 miles to Ross Barnett Reservoir Crossroads. Turn right, go to the first intersection and turn left. Follow this road to the M.G.S. sign at the lodge entrance.

CALENDAR

May 21	J.G.S. DOODLEBUGGER'S OPEN Brookwood C.C., 8:30 A.M.
May 23	A.A.P.G. ANNUAL CONVENTION New Orleans
June 1	M.G.S. BARBECUE Fowler Lodge, 4:30 P.M.

ELECTION

Elections of 1976-1977 officers for the Mississippi Geological Society will be held in conjunction with the annual spring barbecue at Fowler Buick Lodge on Barnett Reservoir, Tuesday, June 1. This departure from the usual date in late May is due to the A.A.P.G. convention. Those unable to attend the barbecue can obtain absentee ballots from Secretary *Dave Cate*.

The nominating committee, chaired by *Larry Walter*, has selected the following candidates: President, *Dave Cate* and *Tom Jones*; First Vice President — President Elect, *Sarah Childress* and *Buddy Twiner*; Second Vice President, *Les Aultman* and *Oscar Paulson*; Secretary, *Ed Luper* and *Ron Tisdale*; Treasurer, *Ray Lewand* and *Win Howard*. Brief biographies and pictures are published elsewhere in this issue of the Bulletin. Officers' duties and responsibilities were outlined in the copy of the By-Laws included in your January, 1976 issue of the Bulletin, so they are not repeated in this issue.

This election will be different in that you will be voting not only for 1976-77 officers, but also for the 1977-78 President. You will remember that the By-Laws were amended this spring so that, starting in 1976-77, the First Vice President is the President Elect and automatically becomes President the following year.

SPONSORS FOR JUNE

JUSTISS—MEARS
PETRO—GRANDE

RIDGEWAYS
TRIAD O. & G.
CLAYTON WILLIAMS, JR.

MISSISSIPPI GEOLOGICAL SOCIETY

OFFICERS

Jerry E. Zoble	President	Consultant
Elwood Ruhl	1st Vice Pres.	Florida Gas Exp.
Jim White	2nd Vice Pres.	Marr Co.
David Cate	Secretary	First Miss.
Sarah Childress	Treasurer	Miss. Geo. Survey
W. E. Taylor	Past President	Consultant

DELEGATES

J. B. Goldman, Jr.	A.A.P.G.	Florida Gas Exp.
Philip R. Reeves	A.A.P.G.	Cities Service Oil
Kevin Cahill	G.C.A.G.S.	First Miss.

COMMITTEES AND CHAIRMEN

AAPG Membership	J. B. Goldman, Jr. & Philip R. Reeves
AAPG Public Information	Verne L. Culbertson
Continuing Education	Don Turner
Entertainment	T. C. Rader
Golf	James L. Cummings
Job Placement	Larry Boland
Nomenclature	James Bollman
Program	John D. Myers
Projection	Ronald Tisdale
Publicity	Verne L. Culbertson

NEWS BULLETIN STAFF

Editor	Bill McGee
Asst. Editor	Les Aultman
Advertising Mgr.	Paul Day
Petroleum Auxiliary	Virginia Force
Geophysics	Don Smith
Land	Rip Mason
Photographer	David Williamson
Progress	Don Beal

A.A.P.G. SOLICITING PAPERS FOR A TYPICAL FIELDS VOLUME

As noted in the February A.A.P.G. Bulletin, A.A.P.G. is searching for papers on unusual oil fields. Although the volume would include weirdos like Red Wing and Dineh bi Keyah, it would be oriented mainly toward those which, from all usual appearances, should not be productive. The idea behind the volume is to help equip geologists with additional knowledge in considering more different possibilities for hydrocarbon occurrences.

If you are interested, send a copy of your abstract to Gary Howell at the A.A.P.G. Tulsa headquarters.

A & N PRODUCING SERVICES, INC.

709 Standard Life Building P. O. Box 1669
Jackson, Mississippi 39205

PRESIDENT'S NOTES -

Well, it doesn't seem possible, but 12 months have almost elapsed, so I guess this will be my swan song. It has been a challenging year, and for the most part I have enjoyed it. I would like to take this opportunity to give a special thanks to my fellow officers and committee chairmen who made my burden considerably lighter. I would particularly like to thank our First Vice President, *Elwood Ruhl*, for stepping in and taking over the Publications job when *Jim White* was abruptly transferred to Dallas. We've had some successes and at least one failure. I think the G.C.A.G.S. Convention last fall was the best ever, and the reception our "Ladies Night" received suggests we ought to make it an annual event. The Spring Dance was disappointing to say the least, but we learned from our experience and can probably anticipate a successful event next year.

I would like to make one suggestion to my successor. Don't wait until next fall to find your committee chairmen! Recruit them immediately and that way you can hit the ground running when the regular society business begins again in September.

Again, thanks to the membership for a most rewarding year; it was an honor to serve as your president.

Jerry E. Zoble

FROM THE EDITOR . . .

Taking my cue from Jerry, I, too, would like to give special thanks: to the Bulletin advertisers of 1975-1976. Without them, we would have no Bulletin - - just check the treasurer's report on Page 5 and you'll see! With our advertisers' support, however, the Bulletin was almost a break-even proposition. *Paul Day* was instrumental in acquiring our many advertisers for 1975-1976; we owe him a big hand, also.

The ad rotation inside the Bulletin every month was for eye-catching purposes. It provided each advertiser with very unusual advertisement placement. Plans are to continue the rotation for 1976-1977, so consider the rotation-in-the-Bulletin aspect when you are contacted.

AMERICA SOUTHWEST CORP.

Box 936, Jackson, Miss.	354-2513
Jack Pryor, Jr., Exec. V.P.	Charlie Barton, Geol. - Land

NEWS OF MEMBERS

Jerry Zoble, at the April meeting, announced that our new A.A.P.G. delegate will be *Alan Jackson*, and *Dean Kebert* is the new alternate.

Pete Heinrich was promoted to District Geophysicist at Enserch effective May 1.

T. C. Rader provided some fine door prizes for the April "Ladies' Night" meeting. Those of you who couldn't make the meeting really missed something. Just ask *Bob Segar*, *Riley Hagan* or *Harold Baker*.

CANDIDATES FOR PRESIDENT



DAVID CATE

Education: B.S. 1960 University of Arkansas
M.S. 1962 University of Arkansas
Employment: 1961-1966 Texaco, Inc.
1966-1973 Skelly
1973-1976 Florida Gas
1976- First Mississippi Corp.
Societies: A.A.P.G.
M.G.S. - 1971-1972 Editor
1975-1976 Secretary



TOM JONES

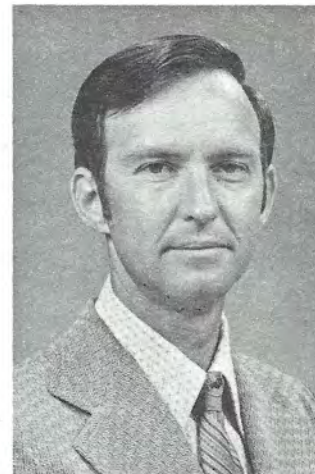
Education: B.S. 1959 Louisiana State
Employment: 1959-1966 Baroid
1966-1975 Cities Service
1975- Cleary Pet. Corp.
Societies: M.G.S.
J.G.S.

CANDIDATES FOR FIRST VICE PRESIDENT, PRESIDENT ELECT



SARAH CHILDRESS

Education: B.S. 1972 University of Southern Mississippi
Employment: Miss. Geological Society
Societies: Miss. Academy of Science
M.G.S. - 1973-1974 Editor
1974-1975 Secretary
1975-1976 Treasurer



BUDDY TWINER

Education: B.S. 1960 Mississippi State
Employment: 1963-1968 Chevron
1968-1972 Skelly
1972-1974 Union
Societies: J.G.S.
M.G.S. - 1969-1970 Projection
1970-1971 Treasurer
1971-1972 2nd Vice President
1973-1974 Jurassic Cross Sections

CANDIDATES FOR SECOND VICE PRESIDENT



LES AULTMAN

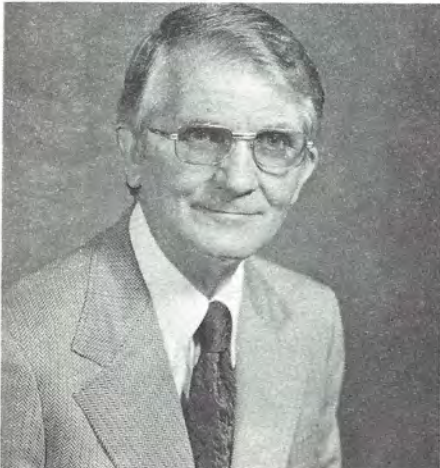
Education: B.S. 1971 University of Southern Mississippi
M.S. 1975 University of Southern Mississippi
Employment: 1973-1974 Gulf
1974- Pruett & Hughes
Societies: A.A.P.G.
M.G.S.



OSCAR PAULSON

Education: B.S. 1954 Mississippi State University
M.S. 1955 Louisiana State
Ph.D. 1960 Louisiana State
L.L.B. 1967 Blackstone School of Law
Employment: 1955-1956 Mississippi State
1956-1960 Louisiana State
1960-1961 La. Geological Survey
1961-1964 Gulf Coast Venture
1964-1966 Independent
1966- University of Southern Mississippi
Societies: A.A.P.G. - Editor, G.C.A.G.S., 1975
J.G.S.
Miss. Academy of Science
M.G.S.

CANDIDATES FOR SECRETARY



ED LUPER

Education: B.S. 1948 Louisiana State
Employment: 1948-1949 Kerr-McGee
1949-1954 Southern Prod.
1954-1959 Tenneco
1959-1970 Henry N. Toler
1970- Miss. Geological Survey
Societies: S.E.P.M.
Miss. Academy of Science
M.G.S. - 1974-1975 Editor



RON TISDALE

Education: B.S. 1972 University of Alabama
M.S. 1974 University of Tennessee
Employment: 1974- Union Oil
Societies: A.A.P.G.
M.G.S. 1975-1976 Projection
G.S.A.

CANDIDATES FOR TREASURER



WIN HOWARD

Education: B.S. 1956 University of Oklahoma
 Employment: 1956-1967 Humble
 1967-1972 Texas Pacific
 1972-1975 Anadarko
 1975- R. L. Burns Corp.
 Societies: A.A.P.G.
 M.G.S.



RAY LEWAND

Education: B.S. 1965 Millsaps
 M.S. 1967 Baylor
 Employment: 1967-1968 Shell
 1968-1975 Cities Service
 1975- Forest Oil
 Societies: Baylor Geological Society
 M.G.S.

**MISSISSIPPI GEOLOGICAL SOCIETY
 TREASURER'S REPORT**

June 30, 1975 – April 30, 1976

INCOME:

Advertising	\$ 1500.00
Publications	1080.00
Meetings	2738.50
Contributions	803.49
Dues	<u>3410.00</u>

Total Income \$10221.99

EXPENDITURES:

Publication Costs	\$ 435.80
Meetings	5204.42
Secretarial Services	2399.88
Contributions & Scholarships	312.00
Postage	521.76
Office Supplies	61.80
Storage & Insurance	459.00
Equipment Rental	13.13
Accounting & Audit	70.00
GCAGS & AAPG	533.10
Miscellaneous	<u>80.40</u>

Total Expenditures \$10191.61

Bank Balance – June 30, 1975	\$ 984.78
Income	<u>10221.99</u>

TOTAL \$11206.77

Expenses \$10191.61

Bank Balance April 30, 1976 \$ 1015.16

Savings Account Balance \$ 3369.04

PROGRESS

Mississippi Completions – March, 1976

Exploratory	Oil	Gas	Dry
Eocene	3	0	9
UK	1	0	2
LK	0	0	1
Jurassic	1	0	0
Paleozoic	0	0	4

Development	Oil	Gas	Dry
Eocene	3	0	7
UK	4	0	3
LK	1	1	1
Jurassic	0	0	0
Paleozoics	0	1	0

New Field Discoveries

- Unnamed** Radzewicz & Assoc. & C.A.
Cardneaux
No. 1 Baker "194"
Section 33-6N-2W, Adams Co.
Perfs. 3180 1/2' - 3182 (Sparta)
1PF 85 BOPD, 12/64", Gr. 24^o
- Unnamed** L.L. & E. & Inexco Oil Co.
No. 1 White etal
Section 22-6N-14W, Jones Co.
Perfs. 18,083' - 18,160' O.A.
(Cotton Valley)
IPF 440BOPD, 0.39 MMCFGPD,
12/64", Gr. 49.9^o
- York** El Toro Oil Co.
No. 2 York Plantation
Section 35-5N-3W, Adams Co.
Perfs. 6556-6569 1/2' (Wilcox)
1PF 81BOPD, 14/64", Gr. 380
- Unnamed** Belden & Blake & Co.,
LTD Partnership
No. 1-D Parker
Section 66-8N-2W, Adams Co.
Perfs. 10,091 - 10112' (Lwr. Tusc.)
1PF3BOPD, 0.24MMCFGPD, 14/64"
- Clermont** H & N Oper. Co.
No. 2 Giles
Section 3-7N-3W, Adams Co.
Perfs. 5902-5905 1/2' (Wilcox)
1PP61BOPD, Gr. 44.2^o

**JACKSON GEOPHYSICAL SOCIETY
23RD ANNUAL
"DOODLEBUGGER'S" OPEN AND PICNIC**



To be held at the Brookwood Country Club on Friday, May 21, is J.G.S.'s annual "biggie". Sponsors for the event are listed in the photo above. Don Smith President, has extended an invitation to the M.G.S. membership, so let's get with it! Registration is \$5.00, and tee off time is 8:30 to 12:00. Four man teams will be drawn while players are on the course. As usual, the beer is free. Volleyball, badminton and fishing are included in children's activities (bring your own equipment). Bingo Dinner at 6:30; adults \$4.00, kids free. Prizes awarded after dinner – you must be present to win. Music for dancing and/or listening by the "CHADWICKS".

MOON-HINES	
Robert M. Moon 1804 Capital Towers	E. R. Hines, Jr. Jackson, Mississippi 39201
M. D. (Dale) MYERS CONSULTANT GEOLOGIST Phone (601) 355-3536	

OIL WELL LOGGING, INC.	
P. O. Box 16039 - Jackson, Mississippi	354-3642
MARVIN L. OXLEY	
134 South Lamar St Jackson, Miss. 39201	601/969-4149 601/956-6446
MORTON M. PHILLIPS Petroleum Geologist	
902 Milner Bldg.	Ph. 355-3364 Jackson, Miss. 39201 Ph. 366-9665
WILLIAM H. PLAYER & ASSOCIATES	
108 Wall St.	Natchez, MS
PRUET & HUGHES COMPANY 1111 Capital Towers Building Jackson, Mississippi 39201	
PAUL ANTHONY RADZEWICZ Oil Producer	
1829 Deposit Gty. Bldg	969-3950 Jackson, Miss. 39201

THE ANALYSTS
Core Analysis - Mud Logging
Laurel - Ph. 649-3444

Bunk Caldwell Frank Howson

ATWATER, CARTER, MILLER & HEFFNER
Consulting Geologists and Engineers
424 Whitney Bank Building
New Orleans, Louisiana 70130
(501) 581-6527

DAVID K. BROOKS
660 Milner Building Oil Exploration Jackson, Mississippi
948-5722

BROWNING & WELCH
GEOLOGISTS
Suite 1411, Standard Life Building
Jackson, Mississippi 39201

C & K PETROLEUM, INC.
1800 Capital Towers Jackson, Mississippi 39201 601 948 1111

CALLON PETROLEUM CO.
Box 1287 Natchez, Mississippi 39120

CAPITOL PRINTING & BLUE PRINT COMPANY
330 East Rankin Street Jackson, Miss. 39202 353-2751

L. WICK CARY
Room 932 Consulting Geophysicist Box 50391
National Bank of Commerce Bldg. New Orleans, La.

THOMAS H. CLEMENTS
Consulting Geophysicist
1738 Capital Towers Phone 601/355-8724
Jackson, Mississippi 39201

CORE LABORATORIES, INC.
Core Analysis and Well Logging
Laurel New Orleans
601/425-3394 504/524-6256
Jackson Mobile
601/932-1492 205-456-2271

CRAFT PETROLEUM CO., INC.
Wyatt E. Craft
Exploration Operations

CRUDE OIL PURCHASING, INC.
P. O. Box 22660 Phone 601 - 948-5853
Jackson, Mississippi 39205

DRESSER-ATLAS
Jackson, Mississippi 948-5591

ENSERCH EXPLORATION, INC.
Maurice N. Birdwell
District Manager
1530 Capital Towers Jackson, Mississippi 39205 P. O. Box 219
601 969-0100

HERBERT J. FERBER
Consulting Geophysicist
5456 Hartsdale Drive Jackson Mississippi 956 4666

FLORIDA GAS EXPLORATION CO.
1444 Capital Towers
Jackson, Mississippi 39201

WADE FORTENBERY
Geologist
P. O. Box 1183 - Natchez, Miss. Bus. 442 6011
Office Hwy. 61 South Res. 442 3250

JOSEPH F. FRITZ
Petroleum Geologist
Jackson, Miss. 601/354-1134

H. LEROY FULGHUM
Consulting Geologist
257 Valley Vista Drive Jackson, Mississippi 39211 601/956-6346

JAMES B. FURRH, JR.
Oil Producer
1236 Capital Towers Jackson, Mississippi

GEOPHYSICAL DATABANKS, INC.
1234 Loyola Bldg. Room 303
New Orleans, La. 70112 504-581-4724
Grady Loftin Jim Malone
CDP data available in the following area:
Gulf Coast Appalachians Rockies
Agents for Petroconsultants, S.A.

GEOPHYSICAL FIELD SURVEYS, INC.
Seismic Exploration
Room 201 - 975 North Street Jackson, MS
P. O. Box 12304, Colonial Station 601/948-1580

GERMANY INVESTMENT CO.
Norman G. Germany E. Wilson Germany
Dallas, Texas Natchez, Mississippi

GUARDIAN OIL COMPANY
L. Graham Hughes Charles S. McClelland
1636 Capital Towers Jackson, Mississippi

G. W. GULMON & ASSOCIATES
Petroleum Geologist
Natchez, Mississippi
H. E. Hansen, Dallas A. T. Ricci, Jr., Natchez

CLAUDE B. HAMMILL
Oil Operator
2306 First Nat'l Bank Bldg. Houston, TX 77002

W. L. HARPER
Geophysical Consultant
115 Sterling Towers Jackson, Miss. 39202
Phone 601-352-3339


GEORGE H. ISBELL, JR.
Geologist
1240 Capitol Towers Phone: (601) 948-4881

ALAN JACKSON
Consulting Geologist Telephone 601-582-1192
503 Mandalay Drive Hattiesburg, Mississippi 39401

ROBERT R. JACOBS
Petroleum Geologist
P. O. Box 16263 Jackson, Mississippi 39206
362-4846

JUSTISS-MEARS OIL CO., INC.
P. O. Drawer "N" Jena, Louisiana 71342
(318) 992-4000

H. E. KARGES Consulting Geologist	
1812 Capital Towers Phone 352-0972	P. O. Box 1635 Jackson, Miss. 39205
K. B. KEARY, JR. Petroleum Geologist	
439 W. Northside Dr. Jackson, MS 39206	362-4895
WILBUR H. KNIGHT Consulting Geologist	
1017 First Nat'l Bank Bldg.	Jackson, Miss. 355-1528
HILTON L. LADNER Petroleum Geologist	
903 FNB Building Jackson, Mississippi	354-3616
LARCO DRILLING COMPANY, INC.	
Suite 1700 Capital Towers	Jackson, Miss. 39201 Phone 355-1542
R. E. (Dick) LEE AND ASSOCIATES	
The Redd Building P. O. Box 5168	4443 I-55 North Jackson, MS 39216
LOCATION SAMPLE SERVICE, INC. Bob Legate Jackson, Mississippi 932-1410	
MILLER OIL PURCHASING CO. A Division of Ergon, Inc.	
P. O. Box 1308	Jackson, Mississippi 39205

RIDGWAYS	
103 E. Pearl Street Jackson, Mississippi	355-4751
SCHLUMBERGER WELL SERVICES	
Jackson, Mississippi	Phone 352-8589
 Seismograph Service Corporation <small>A SUBSIDIARY OF BAYTECH COMPANY</small> P. O. Box 1590 • Tulsa, Okla. 74102 • (918) 627-3330 DISTRICT OFFICES AND DATA PROCESSING CENTERS HOUSTON • MIDLAND • DENVER • ALMA, MI	
SOUTHERN NATURAL GAS CO.	
P. O. Box 1513 Donald R. Scherer, Dist. Geologist	Houston, Texas 622-7270
ROBERT L. THOMSEN	
1818 Capital Towers Jackson, Mississippi	P. O. Box 1847
WOOLF & MAGEE, INC.	
P. O. Box 3566 Tyler, Texas 75701	
J. W. Arnold, Pres. W. D. Magee, Jr., Sec.-Treas.	Allen W. Woolf, Vice Pres. A. B. Irion, Drig. Supt
Tyler, TX AC 214 562-4051 — Natchez, MS AC 601 445-4570	
Rotary Rigs in Texas, Louisiana, Arkansas, Mississippi and Alabama	
ROBERT WOMACK, JR. Consulting Geologist	
1509 Standard Life Bldg.	Jackson, Miss. 39201 Phone 353-4650



MISSISSIPPI GEOLOGICAL SOCIETY
P. O. BOX 422
JACKSON, MS 39205

Monsour, Emil
Lone Star Prod. Co.
Box 219
Jackson, Miss. 39205