

# NEWS

# BULLETIN

mississippi geological society



VOL. XXI, NO. 1, SEPTEMBER 1973

## MGS SWINGS INTO 35TH YEAR FALL OUTING SET FOR SEPT. 21

### GOLF TOURNAMENT AT LIVE OAKS

The "Long Hot Summer" wanes and fall is heralded in by news of the Mississippi Geological Society's annual golf tournament. This year's event will be held at Live Oaks Country Club on Friday, September 21.

Dave Cate and Tom Clements are teamed to co-chairman this year's contest, and they suggest that everyone make up their own foursomes, then pre-register by calling Tom at 355-8724 or Dave at 969-9111. They will arrange foursomes on request; however, they suggest you apply as early as possible. Latecomers will, as before, be able to form foursomes at the registration desk. The green fee this year is \$3.50. All sod busters are encouraged to attend.

Defending champs are John Lacey and Steve Dennis. They paired for top honors last year and flipped a coin for the trophy - John won. Both men will probably be there to take on Live Oaks' challenging fairways a second time. It's rumored that Charlie Barton, who was hit on the head with a golf ball during the CGAGS Tournament in Corpus Christi last fall, will wear his hard hat. Verne Culbertson, the 1971 champ, will be in there swinging to regain the crown. Several large shade trees along the course provide excellent sites for short rest periods and chilled "beverages" will be "on tap" to aid those who are fatigued and dehydrated. Prizes and trophies will be awarded at the evening barbecue. Everyone - BE THERE!

### MISSISSIPPI GEOLOGICAL SOCIETY CALENDAR

- SEPT. 17 JGS - Dr. P. M. Shah Talk - King's Inn  
Social Hour 5:30 p.m. - Dinner 6:30 p.m.
- SEPT. 21 MGS Golf Tournament, Live Oaks Golf Club  
Tee Off Time 9:00 a.m.  
Beer and Barbecue  
Fowler Buick Lodge  
Beer at 4:30 p.m.; Barbecue at 6:30 p.m.
- OCT. 24 Gulf Coast Association of Geological Societies  
23rd Annual Meeting  
Shamrock Hilton Hotel  
Houston, Texas

FOR BARBECUE RESERVATIONS CALL T. C. RADER  
(948-4128) BY NOON, THURSDAY, SEPT. 20.

### BARBECUE AT FOWLER LODGE

Tired and disgruntled golfers may find comfortable rocking chairs for resting as well as advice, consolation and cold beer at the Fowler Lodge following the MGS Golf Tournament. Doors will open at 4:30 p.m. and dinner will be served at 6:30 p.m.

Newcomers to the Jackson area should follow I-55 North to the Northside Drive interchange, exit east on Northside Drive then turn left on Old Canton Road. Proceed northeast on Old Canton Road for approximately six miles to the Ross Barnett Reservoir crossroads; turn right, go to the first intersection and turn left to the west side of the reservoir. MGS signs will direct you northeast to the Fowler Buick Lodge.

Both the fall and spring barbecues have always been popular events with the membership and usually draw the largest crowds of the year. Consequently, the opportunity is ripe for all members to meet one another and make plans for the coming MGS year. This year's event is a "FREEBEE"; no charge is made but your 1973-74 dues must be paid. Dues may be paid to the secretary in advance or paid at the door the evening of the barbecue.

T. C. Rader has volunteered as entertainment chairman for MGS again this year. In years past the spring and fall barbecues were catered. Last year T. C. Rader and J. C. (Daddy-O) Phillips, both with Halliburton, fanned the coals and barbecued "on location". Never have so many eaten so well - or so much! Last May's event had approximately 110 members in the chow line. They have really added an extra to Halliburton's Services. They have nudged over the caterers and gained their own culinary fame.

Regulations require that a catering service be employed for all social functions serving food at the lodge. We will comply by hiring catering personnel as KP's and Pit Maintenance Engineers.

"WHAT'S FOR DINNER?"; Grandpa Rader of Hee-Haw TV fame answers from the dining room window:

"Barbecued Hors d'oeuvres, hot from the spit,  
Ribs and ham, chicken too  
Barbecued as only Rader can do,  
Home made biscuits and barbecued beans,  
So much to eat there's no room for the greens."

Considering the high price of pork, beef and chicken, and the scarcity of them on the grocer's shelves these days, it should take little prompting to get a big turnout of new and old members. Reservations are a MUST and everyone planning on going should call T. C. Rader's office at 948-4128 no later than Thursday, September 20. See you there!



## MISSISSIPPI GEOLOGICAL SOCIETY

### OFFICERS

Larry Walter	President	Consultant
W. C. (Gene) Taylor	1st Vice President	Consultant
Harry E. Fritz	2nd Vice President	Gulf Oil Co.
Elwood M. Ruhl	Secretary	Florida Gas Explor. Co.
John D. Myers	Treasurer	Placid Oil Co.

### REPRESENTATIVES

Stewart W. Welch	AAPG House of Delegates	Consultant
Howard Samsel	AAPG House of Delegates	Union Oil of Calif.
Frank Murrell	GCAGS	Ashland Oil Co.
Jerry Zoble	GCAGS	Consultant

### NEWS BULLETIN STAFF

Sarah Childress	Editor	Miss. Geological Survey
Paul Gribas	Advertising Mgr.	Shenandoah Oil Co.
John Richard	Personal News	Union Oil of Calif.
Jimmy Walker	Statistics	Amoco Production Co.

PRINTED IN JACKSON, MISSISSIPPI

## personal news-

Ed Minihan, formerly Division Geologist and Manager of Shenandoah Oil Company in Jackson, has been transferred to Fort Worth, Texas, as Exploration Geologist for Southeastern United States.

Kevin Cahill, geologist with Shenandoah Oil Company, has been promoted to Division Geologist and Manager of Shenandoah's Jackson Office, effective August 1st.

Richard Lewis, formerly geologist with Shenandoah Oil Company in Jackson, has accepted a position with the Mississippi Geological Survey.

John Luckert, formerly Regional Geologist with Cities Service in Jackson, has moved to Tulsa, Oklahoma, as a member of the Exploration Staff.

C. R. Garner has been appointed Exploration and Production Manager of the newly combined Exploration and Production Departments for Cities Service Oil Company in Jackson.

K. P. Ducote has transferred from Tulsa, Oklahoma to Jackson as Assistant Exploration Manager for Cities Service Oil Company.

J. R. Stripling, formerly Region Exploration Geologist with Cities Service, has been promoted to Region Geologist.

P. R. Reeves, Staff Geologist with Cities Service, has been promoted to Region Exploration Geologist.

Dr. Oscar Paulson has been named Chairman of the Department of Geology at the University of Southern Mississippi.

Beth Brown, a graduate from Nicholls State University, has recently joined the Geology Department of the Gulf Oil Company in Jackson.

Lester Aultman, a graduate student from University of Southern Mississippi, has accepted a position as geologist with the Gulf Oil Co., U.S. Lester and his wife Rosemary have moved from Seminary, Mississippi to Jackson. They have a daughter, Paige, five years old. The Aultmans will reside at the Hallmark Garden Apartments on Northside Drive.

Marvin Oxley has resigned from the Bison Oil Company, effective July 1, 1973. Marvin will open Consulting Services at his office at 213 South Lamar in Jackson.

Dean Kebert, formerly with Chevron, Southwest Gas and Center Oil Company, will open a Geological Consulting Office in his home at 1218 Springdale Drive, Jackson. Dean's telephone number is 982-4662.

Lester (Mickey) A. McGuire, Chevron Oil & Gas Scout, has been transferred from Shreveport, Louisiana (he had been there 22 years) to Jackson. Mickey, his wife Elizabeth and their four children, will live in Clinton, Mississippi.

## petroleum auxiliary-

Officers of the Petroleum Auxiliary for the 1973-74 term will be hostesses for a membership coffee on Tuesday, September 18, 1973, from 10 a.m. until 12 noon, in the home of Mrs. James L. Cummings, Jr., 4251 North Honeysuckle Lane.

Wives of members of the Mississippi Geological Society, Mississippi Geophysical Society, Mississippi Landmen's Association or A.I.M.E. are eligible for membership and invited to attend the coffee. An interesting program has been planned for the coming months including a Couples Barbecue and a trip to the Natchez Pilgrimage.

Further information may be had by contacting one of the following officers:

President - Mrs. Lincoln Warren	362-2060
1st Vice President - Mrs. Kerry Briggs	956-2235
2nd Vice President - Mrs. Marcial Forester	956-3102
Secretary - Mrs. Ron Halfacre	956-5520
Treasurer - Mrs. Edward S. Voisinet	825-6715
Reporter - Mrs. Richard V. Bowman	372-8493

## from the editor-

by Harry Fritz

The newly elected officers for the MGS are now assuming their respective responsibilities. The transition went smoothly because of the cooperative effort of the past President, Charlie Barton and other past officers of the Society. Our responsibilities were clear cut and we had the experience record of previous officers to lean on and we benefited greatly.

Perhaps, few realize how much time and effort each new MGS president must devote to his first few months in office. I have noted for the past few years the problems faced by Larry Boland, Charlie Barton, and now Larry Walter. Each, imminently qualified for the task, approached the year with an ambitious program designed to promote a growth in our membership, to provide technical services to the public by way of published professional papers, and to stimulate the members by programs featuring qualified speakers on currently popular exploration topics. Each should try to encourage members to be updated technically by proposing continual educational programs.

Each leader has presented an outstanding platform covering the above planks, and each should be congratulated on the achievements accomplished. This article only points out just how hard they had to work to get willing members to assume the tasks at hand. Key positions within the Society go unfilled for months before an assignment or a committee position is filled. We have a healthy membership totaling nearly 400. A great number of these members reside in or near Jackson. Surely, time can be allotted during lunch hours, evenings, or weekends to actively participate in the Society's functions. Larry Walter has so much planned that should be done. For example, the Volumes I & II of the Red Book should be updated and condensed into a single volume. The Wilcox Book now needs supplements; it was published in 1969. Then there are Society responsibilities related to the GCAGS Convention which our Society will host in 1975. All are familiar with the work load involved with this project - and it must be done THIS YEAR.

I solicit each member to sit down and evaluate the manner in which he can serve MGS, and then reverse the order - call Larry and volunteer for a task which you can and will do.

Daniel Busch, our new AAPG President, recently stated, "Committee involvement has been historically a means of maintaining a reservoir of potential officer candidates." Through committee work we in MGS will have an abundant reservoir of officer candidates for we are getting few qualified members who are willing to serve and each year - Kevin Cahill can attest to this - it gets more difficult to find receptive, qualified candidates.

Our MGS officers have carried the committee work load on their shoulders in years past - now, in order that they may execute an exciting program for the Society, they need YOU - Enlist now!



# president's notes-

by Larry Walter

It is difficult for a new president of any group or organization to say anything really original. Nevertheless, certain words need to be said even though they are repetitious.

It is an honor for me to be the President of the Mississippi Geological Society and with the help of Gene Taylor, Harry Fritz, John Myers and Elwood Ruhl, I'll do the best that I can.

Committee appointments have been filled as follows:

**A - Standing Committees**

- AAPG Membership ..... Stew Welch & Howard Samsel
- Entertainment ..... T. C. Rader
- Nomenclature ..... Jim Bollman
- Field Trib ..... Bill Moore
- Program ..... Larry Boland
- Projection ..... Jim White
- Bulletin Editor ..... Sarah Childress
- Advertising ..... Paul Gribas
- Statistics ..... Jimmy Walker
- Publicity ..... Marvin Oxley
- Golf ..... Tom Clements and Dave Cate



**LARRY WALTERS  
PRESIDENT**

Our biggest source of income is the sale of society-originated publications so we are greatly indebted to our Second Vice-President and the individuals who work on publication committees.

Another pressing obligation facing our Society is the preparation for the upcoming G.C.A.G.S. Convention to be held here in the fall of 1975. The successful culmination of that convention will require the time and work of all members of the M.G.S. in addition to help from other G.C.A.G.S. affiliated societies.



**John Myers  
Treasurer**

I particularly want to thank all people who are working on committees this year and hope we can generate more interest in our society with additional involvement from more of the members.

## JACKSON GEOPHYSICAL SOCIETY TALK SET FOR SEPT. 17

The Jackson Geophysical Society's new officers for the 1973-74 year are as follows:

President	Frank F. Everett	Cities Service Oil Co.
Vice President	E. C. Andress	Florida Gas Exploration Co.
Secretary-Treasurer	Eric B. Jensen	Cities Service Oil Co.

The society's first meeting of the year will be held September 17, 1973, at the King's Inn Restaurant. A social hour will begin at 5:30 p.m., and dinner will be served at 6:30 p.m. Dr. P. M. Shah, Esso Production Research Company, Houston, Texas, will speak on "CDP Processing of Steeply Dipping Reflection Data."

The CDP processing of seismic data has traditional ties with a plane parallel layered model of the earth. New understanding of the properties of the CDP reflections makes it a versatile procedure useful for the processing and geophysical interpretation of steeply dipping reflection data. The intimate relationship of Vnmo with the amplitudes of reflections, the computation of dip-compensated interval velocities from Vnmo, and the migration of dipping events will be the principal topics of discussion.

## BULLETIN AND ADS TERMINATE WITH 72-73 DUES YEAR

The first issue of the Bulletin is being sent to all members of the Society who paid 1972-73 dues. If you have not paid the ten dollars for your 1973-74 dues by now—you are in arrears, September is the end of the grace period for receiving the Bulletin. Starting with the October issue the Bulletin will be mailed only to those listed on the 1973-74 membership roster.

The Society's advertisers are alerted that last year's ads for the News Bulletin also expire with this edition. The October Bulletin will carry only those ads paid for by printing time in mid-September.

We wish to thank last year's sponsors of the News Bulletin. Without their help we would not be able to print it. In turn, let's show our thanks by calling a News Bulletin Sponsor when we have need of a service, and.....tell them where you read their ad, it helps.

## aapg news-

### OIL AND GAS FIELD DATA FILE

Joint AAPG - USGS project to develop a computer file of non-proprietary data on fields in North America has been approved. John Rouse will serve as the Chairman of the Project. The file will have mapping capabilities. The Survey will compile a wall map at a scale of 1:5,000,000.



**W. E. (Gene) Taylor  
1st Vice President**



**Harry E. Fritz  
2nd Vice President**

**B - Representatives**

- AAPG House of Delegates ..... Stew Welch & Howard Samsel
- AAPG Alternates ..... Alan Jackson & John Richard
- G.C.A.G.S. .... Frank Murrell & Jerry Zoble

**C - Special Committees**

- Jurassic Cross Section ..... Buddy Twiner
- Contributions ..... Prentiss Boatner

This will be a busy year for our Society. The Jurassic Cross Section Committee with Buddy Twiner as Chairman is winding up this work and the sections will be available in October.

The Society plans to add new field supplements to our "Red Books" and/or to revise and update the current "Red Books." This will require the cooperation and efforts of many of our society members.



**Elwood Ruhl  
Secretary**



aapg new (continued)

### 23rd ANNUAL MEETING OF GCAGS OCTOBER 24 - 27, 1973

"T-N-T - Today's New Technology," "T-N-T - Tomorrow's New Targets," will be the theme of this year's GCAGS Meeting in Houston. The Houston Geological Society hosts the GCAGS and GCS-SEPM this year and cordially welcomes all society members to the Space City Convention headquarters and meeting site will be the Shamrock Hilton Hotel.

Technical sessions this year will include symposia on "Deltas," "New Exploration Techniques," and "Tectonics," by the GCAGS. A feature of this year's program will be a number of papers on Nanno-fossils sponsored by the SEPM.

The SEPM will sponsor the only Pre-Convention Trip. This will be a three day trip to study trace fossils and their application in paleo-ecologic and stratigraphic studies. The cost will be about \$50.00 and will be limited to 40 participants. The trip will leave from Dallas, Monday, October 22nd and terminate on Wednesday, October 24th.

The GCAGS will sponsor three Post-Convention trips. A one day trip will be made to the Brazos River and Galveston Island areas to study recent coastal plain deposits. The trip will cost about \$15.00 and be limited to 45 participants. This classic trip will be on Saturday, October 27th.

A seven day trip to the coastal Quintana Roo area of Yucatan Peninsula, Mexico, is planned to study the carbonate-evaporite-reef facies. The cost will be about \$265 and be limited to 35 participants. The trip will be from October 26th through November 2nd.

On Friday, October 26th, through Saturday, October 27th, there will be a one and one-half day trip to the Moffat Mound area near Belton to study the carbonate-reef facies of the Edwards Trend in Central Texas. This trip will cost \$40.00 and be limited to 40 people.

Entertainment will feature an icebreaker cocktail party on Wednesday evening at the Grand Ballroom of the Shamrock Hilton Hotel. On Thursday night a Luau will be held at the new Hyatt Regency Hotel, where one may dine and be entertained by Hawaiian Dancers.

The Traditional golf tournament will be held Wednesday, October 24th at the challenging Tejas Country Club. The Golf Committee has some great prizes and entertainment planned. Entry fee will be \$10.00 and participation will be limited to 125 players. Transportation will be provided from the Shamrock Hilton Hotel. Those indicating a desire to play will be contacted by a personal letter.

#### AAPG ELECTION RESULTS

Merrill W. Haas, vice president of Exxon Co., U.S.A., Houston, has been chosen as president-elect of the American Association of Petroleum Geologists. He will automatically become president July 1, 1974, to serve one year.

The 1973-74 president, who took office July 1st, is Dr. Daniel A. Busch, consulting geologist of Tulsa.

The result of the election, which was conducted by mail ballot during April and May, was announced by outgoing president James E. Wilson, petroleum consultant of Denver and a retired vice president of Shell Oil Co.

Haas, 63, has been vice president of exploration for Exxon and its predecessor, Humble Oil & Refining Co., since 1960, following a long career as a geologist and executive with various subsidiaries of Standard Oil Co. (New Jersey), now Exxon Corp., in Venezuela, Tulsa, and Houston.

August Goldstein, Jr., general manager of Lubell Oil Co., Tulsa, was elected vice president to serve a one-year term with Busch.

Elected to a two-year term as a secretary was Bernold M. (Bruno) Hanson, president of Hanson Exploration Co., Inc., Midland, Texas.

Re-elected to a two-year term as editor was Frank E. Kottowski, assistant director of the New Mexico State Bureau of Mines, Socorro, New Mexico. Edd R. Turner, Jr., of Getty Oil Co., Houston, continues for another year as treasurer.

Robert J. Gutru, consultant of Wichita, Kansas, was elected chairman of the House of Delegates.

#### progress-

Mississippi Completions - April, May, June & July 1973

Exploratory	Oil	Gas	Dry
Eocene	1	0	16
UK	3	0	5
LK	1	2	9
Jurassic	2	0	13
Paleozoic	0	1	5

Development	Oil	Gas	Dry
Eocene	3	3	7
Uk	2	0	5
Lk	1	0	1
Jurassic	6	0	3
Paleozoic	1	1	2

#### New Field Discoveries

East McElveen Field 4/13/73	Hunt Industries, No. 1 Parker Angus Farms, Inc. Sec. 24-3N-6E, Amite Co. IPF (11,036-044) Tusc. 204 BOPD + 4 BWPD 12/64" CH; FTP 600; GOR 250/1 Grav. 36 <sup>o</sup>
Oak Grove Field 4/26/73	Cane Corp., No. 1 Board of Supervisors Sec. 16-10N-19W, Simpson Co. IPF (13,735-752) Hosston 1727 MCFGPD 16/64" CH; TP 1175 SI
McKinley's Creek Field 5/23/73	Ladner & Stewart & Gibraltar Oil No. 1 Nevins IPF (2616") Nevins Sd. 2200 MCFGPD 24/64" CH; TP 650 IPF (5004-10) Lewis Sd. 4675 MCFGPD 24/64" CH; FTP 1475
Splunge Field 7/11/73	Pruet & Hughes Dalrymple Unit 24-1 Sec. 24-12S-17W, Monroe Co. IPF (1792-1805) Carter Sd. 600 MCFGPD no sw. 1/4" CH; TP 460

<b>WILBUR H. KNIGHT</b> Consulting Geologist 1020 First Nat'l Bank Bldg. Jackson, Miss. - 355-1528
<b>R. E. DICK LEE AND ASSOCIATES</b> Geophysical Assistance P. O. Box 5165 F.S. Jackson, Miss. 39216 601 - 982-0272
<b>M. D. MYERS</b> Consulting Geologist P. O. Box 10553 Jackson, Mississippi 39209 Phone 355-3536

<b>CONSOLIDATED BUSINESS SERVICES</b> Lettershop Services - Printing - Typing - IBM Copier 101 Milner Bldg. Phone 355-3516 Jackson, Mississippi 39201
<b>SEISMOGRAPH SERVICE CORP.</b> A Subsidiary of Raytheon Corp. Don Underwood, Mgr. Gus Fiongos, Mgr. Data Proc. Jackson, Mississippi Phone 982-9120



**WOOLF & MAGEE, INC.**  
P. O. Box 635 Tyler, Texas  
P. O. Box 594 Natchez, Mississippi  
J. W. ARNOLD, President  
A. W. WOOLF, Vice President  
W. D. MAGEE, JR., Secretary-Treasurer

**KELLY GIRL SERVICE**  
*FOR THE BEST IN TEMPORARY HELP*  
101 Milner Building Jackson, Mississippi 39205  
(601) 352-8326

**H. E. KARGES**  
Consulting Geologist  
1812 Capital Towers 352-0972  
P. O. Box 1635 Jackson, Miss. 39205

**MORTON M. PHILLIPS**  
Petroleum Geologist  
902-G Milner Bldg. - Ph. 355-3364 Jackson, Miss. 39201

**CRAFT PETROLEUM CO., INC.**  
Wyatt E. Craft  
Exploration Operations

**W. L. HARPER**  
Geophysical Consultant  
115 Sterling Towers Jackson, Miss. 39202  
Phone 601 - 352-3339

**LOCATION SAMPLE SERVICE, INC.**  
Jackson, Mississippi 982-2766

**DRESSER OIL FIELD PRODUCTS**  
MAGCOBAR - SWACO  
SECURITY - GUIBERSON  
1287 Petroleum Building 948-5511

**BISON OIL COMPANY**  
Marvin L. Oxley 355-1841  
213 S. Lamar Jackson, Miss. 39201

**The Analysts**  
Lafayette, La. 318-233-1814  
New Orleans, La. 504-523-5591  
Laurel, Miss. 601-428 1466

**DANIEL E. HERLIHY**  
Consulting Geophysicist  
Suite 402 ESI Bldg. Jackson, Mississippi 39216  
(601) 982-5412

**ATWATER, COWAN, CARTER  
MILLER & HEFFNER**  
Geological and Petroleum Consultants  
424 Whitney Bank Bldg. New Orleans, La. 70130  
581-6527

**JUSTISS-MEARS OIL CO., INC.**  
P. O. Drawer "N" Jena, Louisiana 71342  
(318) 992-4000

**JAMES B. FURRH, JR.**  
Oil Producer  
1236 Capital Towers Jackson, Mississippi

**CLAUD B. HAMILL**  
Oil Operator  
2306 First Nat'l. Bank Bldg. Houston, Tex. 77002

**PRUET & HUGHES COMPANY**  
1111 Capital Towers Building - Jackson, Mississippi 39201

**MILCHEM, INC.**  
Drilling Fluids Division of Baker Oil Tools, Inc.  
1224 Capital Towers Bldg. Jackson, Miss. 948-3921

**HALLIBURTON SERVICES**  
1408 Capital Towers, Jackson, Miss. 948-4128  
R. W. (Bob) Graham T. C. Rader

**L. E. WALTER, JR.**  
Consulting Geologist  
708 Standard Life Building Jackson, Mississippi 39201  
Office 948-5169  
Residence 982-4293

**FLORIDA GAS EXPLORATION CO. INC.**  
1444 Capital Towers P. O. Box 2212  
969-9111 Jackson, Mississippi

**DELTA EXPLORATION CO., INC.**  
A Seismic Computing Corp. Subsidiary  
P. O. Box 2669 Jackson, Miss. 39207  
(601) 355-9636  
Cable: DELTEX

**DRESSER-ATLAS**  
Jackson, Mississippi Phone 948-5591

**LARCO DRILLING COMPANY, INC.**  
P. O. Box 3609 Jackson, Miss.  
355-1542

**AMERICA SOUTHWEST CORP.**  
Box 936, Jackson, Mississippi 354-2513  
Gulf Coast Drilling & Exploration

**CENTRAL OIL COMPANY**  
P. O. Box 2097 Laurel, Mississippi 39440

**SCHLUMBERGER WELL SERVICES**  
Jackson, Mississippi Phone 352-8589



<b>HILTON L. LADNER</b> Petroleum Geologist		354-3616
903 FNB Building	Jackson, Mississippi	
<b>G. W. GULMON &amp; ASSOCIATES</b> Petroleum Geologists Natchez, Mississippi		
H. E. Hansen, Dallas	A. T. Ricci, Jr., Natchez	
<b>TRIAD OIL &amp; GAS CO., INC.</b> Oil Property Management		355-9693
1290 Petroleum Bldg.	Jackson, Mississippi	
<b>MEYERS-LASHER, INC.</b> K. B. Keary, Jr. - SE States Representative		
439 W. Northside Dr.	Jackson, Miss. 39206	
	Phone 362-4895	
<b>MONCRIEF OIL INTERESTS</b>		
William E. Linn (601) 956-4418	5725 Ridgewood Road Jackson, Miss. 39211	
<b>SOUTHERN NATURAL GAS CO.</b>		
P. O. Box 1513 Donald R. Scherer, Dist. Geologist	Houston, Texas 622-7270	
<b>SECAN OIL COMPANY</b>		
Natchez, Miss. 445-5634	New Orleans, La. 529-1255	Vidalia, La. 366-5846
	P. O. Box 1246 - Natchez, Mississippi	
<b>PAUL ANTHONY RADZEWICZ</b> Oil Producer		
840 Deposit Guaranty Bldg.	355-4549	Jackson, Miss. 39201
<b>RIDGWAYS</b>		
103 E. Pearl Street		355-4751
Jackson, Mississippi		
<b>DAVID K. BROOKS</b>		
660 Milner Building		Jackson, Mississippi
<b>HERBERT J. FERBER</b> Consulting Geophysicist		
5456 Hartsdale Drive		Jackson, Mississippi 956-4666
<b>ROBERT WOMACK, JR.</b> Consulting Geologist		
1509 Standard Life Bldg.		Jackson, Miss. 39201
	Phone 353-4650	
<b>OIL WELL LOGGING, INC.</b>		
P. O. Box 16039 - Jackson, Miss.		354-3642
<b>JOHNSON-DANIEL DRILLING CO., INC.</b> 213 S. Lamar - Jackson, Mississippi		
P. O. Box 864		Brookhaven, Mississippi
<b>CORE LABORATORIES, INC.</b> Core Analysis and Well Logging		
Laurel		Brewton
New Orleans		
<b>L. WICK CARY</b> Consulting Geophysicist		
Room 932 National Bank of Commerce Bldg.		Box 50391 New Orleans, La.

<b>MILLER OIL PURCHASING CO.</b> A Division of Ergon, Inc.		Jackson, Mississippi 39205
P. O. Box 1308		
<b>TOBIN RESEARCH, INC.</b>		
Jack Coughran 1803 Bank of N. O. Bldg.		525-3679 New Orleans, La.
<b>WADE FORTENBERY</b> Geologist		
P. O. Box 1183 - Natchez, Miss.		Bus. 442-6011
Office: Hwy. 61 South		Res. 442-3250
<b>NEELY BLUEPRINT &amp; SUPPLY CO.</b>		
519 E. Pearl Street		Jackson, Mississippi 354-3523
<b>DON F. HUGUS, JR.</b>		
554 First National Bank Bldg.		Jackson, Miss. 39201
<b>GERMANY INVESTMENT CO.</b>		
Norman G. Germany Dallas, Texas		E. Wilson Germany Natchez, Mississippi
<b>ROBERT L. THOMSEN</b>		
Jackson, Mississippi		
<b>GUARDIAN OIL COMPANY</b>		
L. Graham Hughes 1610 Capital Towers		Charles S. McClelland Jackson, Mississippi
<b>A &amp; N PRODUCING SERVICES, INC.</b>		
709 Standard Life Building		Jackson, Mississippi 39205
		P. O. Box 1669
<b>ALAN JACKSON</b> Consulting Geologist		
503 Mandalay Drive		601-582-1192 Hattiesburg, Mississippi
<b>EXCHANGE OIL &amp; GAS CORPORATION</b>		
16th Floor 1010 Common Street		New Orleans, Louisiana 70112
<b>LADSHAW EXPLOSIVES, INC.</b> TROJAN-ATLAS-DUPONT-HERCULES PRODUCTS		
Bill Ladshaw		Hammond, Louisiana 504-345-2873

**MISSISSIPPI GEOLOGICAL SOCIETY**  
P. O. Box 422  
Jackson, Mississippi 39205

Mr. Fred F. Mellen  
1202 Standard Life Bldg.  
Jackson, Miss. 39201

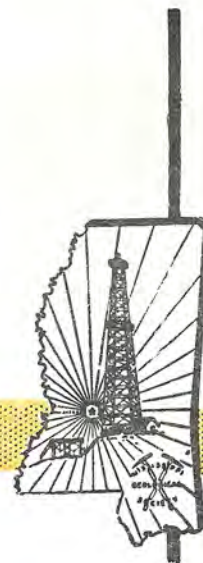




# NEWS

# BULLETIN

mississippi geological society



VOL. XXII, NO. 2, OCTOBER, 1973

## PLIO-PLEISTOCENE EXPLORATION IN THE GULF SUBJECT FOR OCT. 9

DAVID S. "SCOTTY" HOLLAND TO ADDRESS SOCIETY

Mr. David S. "Scotty" Holland, Marine Division Exploration Manager, Pennzoil Company, Houston, Texas, will be the speaker at the Society's October 9th meeting, which will be held at Primos Northgate Restaurant on North State Street. A social hour beginning at 5:30 p.m. will precede the dinner at 6:30 p.m.

The subject of Mr. Holland's talk will be "Exploration in the Plio-Pleistocene Trend Off-Shore Gulf of Mexico". Highlights of this talk will be:

Exploration and development activity during the past three years.

Techniques of employing geological and geophysical data in this type of trend.

Time aspects from lease sale to wildcat drilling to erection of a drilling platform.

Future sales and timing schedules of various off-shore areas, particularly off Mississippi-Alabama-Florida.

These and other interesting facts will be discussed by the speaker.

Mr. Holland is a native of Abilene, Texas. After 4 years in the U. S. Air Force, Scotty received his B. S. degree in geology from the Uni-

versity of Texas in 1957. He was employed by Marathon Oil Company from 1957 to 1966 when he joined Pennzoil Company as a senior exploration geologist concentrating his efforts in the Permian and Anadarko Basins and in the Rocky Mountain, West Coast and Alaska Areas. From 1968 to 1971 he was District Exploration Manager at Lafayette, La. In 1971, shortly after POGO (Pennzoil Offshore Gas Operations) was formed, Scotty became the Division Exploration Manager for this off-shore arm of Pennzoil Company. His vast experience in Marine exploration qualifies him as an authority in the area.

### CECIL CRAFT TO SPEAK TO JGS

The October Meeting of the Jackson Geophysical Society will be held the 15th of October at the Kings Inn in Maywood Mart, I-55 North. Mr. Cecil Craft will present a paper entitled "The Direct Detection of Hydrocarbons."

An invitation is extended to all interested MGS members. The social hour will begin at 5:30 P.M. and dinner will be served at 6:30 P.M.

SPONSERS FOR OCTOBER MEETING  
FLORIDA GAS EXPLORATION COMPANY  
WELLEX

### MISSISSIPPI GEOLOGICAL SOCIETY CALENDAR

- |             |  |
|-------------|--|
| Sept. 26-30 | AAPG International Conference<br>Roosevelt Hotel<br>New Orleans, Louisiana                                 |
| Oct. 3,4,5  | AAPG Mid-Continent Regional Meeting<br>Tulsa Assembly Center<br>Tulsa, Oklahoma                            |
| Oct. 9      | MGS Holland Talk - Primos Northgate<br>Social Hour 5:30 P.M. - Dinner 6:30 P.M.                            |
| Oct. 15     | JGS Craft Talk - Kings Inn<br>Social Hour 5:30 P.M. - Dinner 6:30 P.M.                                     |
| Oct. 16     | Petroleum Auxillary - Covered Dish Luncheon<br>Arts & Crafts Show<br>Riverside Park Clubhouse - 11:30 A.M. |

FOR RESERVATIONS TO THE OCT. 9 MEETING, CALL T. C. RADER'S OFFICE BY NOON MONDAY, OCT. 8. PHONE 948-4128.

### NEW MGS MEMBERS

Beth Brown  
Jackson, Mississippi

Fred L. Lewis  
5433 Hartsdale Drive  
Jackson, Mississippi

Lester Altman  
Hallmark Apartments  
Northside Drive  
Jackson, Mississippi

## MISSISSIPPI GEOLOGICAL SOCIETY

### OFFICERS

Larry Walter	President	Consultant
W. C. (Gene) Taylor	1st Vice President	Consultant
Harry E. Fritz	2nd Vice President	Gulf Oil Co.
Elwood M. Ruhl	Secretary	Florida Gas Explor. Co.
John D. Myers	Treasurer	Placid Oil Co.

### REPRESENTATIVES

Stewart W. Welch	AAPG House of Delegates	Consultant
Howard Samsel	AAPG House of Delegates	Union Oil of Calif.
Frank Murrell	GCAGS	Ashland Oil Co.
Jerry Zoble	GCAGS	Consultant

### NEWS BULLETIN STAFF

Sarah Childress	Editor	Miss. Geological Survey
John McCarty	Assistant Editor	Miss. Geological Survey
Paul Gribas	Advertising Mgr.	Shenandoah Oil Co.
John Richard	Personal News	Union Oil of Calif.
Jimmy Walker	Statistics	Amoco Production Co.

PRINTED IN JACKSON, MISSISSIPPI

## from the editor-

Following is a copy of a letter sent to Sen. Henry Jackson, Washington, D. C., reprinted with the permission of Mr. Woods:

My dear Senator Jackson:

I am a graduate petroleum engineer with a master's degree in geology, and I have been active in exploration and production for oil and gas for 27 years in Kansas, Arkansas, Louisiana, Texas, and Mississippi. At the present time, I operate wells with a production of approximately 2,000 barrels of oil per day. The issues which you have raised in recent days concerning lack of competition in the oil industry and concerning revisions in tax incentives are most vital to my continuing work.

I believe we all agree that domestic exploration for and the production of crude oil is the key to alleviating the present shortages which plague our nation. I am disturbed by your publicized remarks that major companies are using the shortage to alleviate competition and to increase their ding production. I assure you that there is no factual information to support this theory.

EXPLORATION IS A HIGHLY competitive venture and in the continental United States 70 to 75 per cent of the new oil and gas fields are discovered by independent producers. The major companies are primarily spending their exploration money in foreign areas and in the expensive offshore regions of the Gulf Coast, Alaska, etc. There is certainly no lack of competition in the many areas in which I have worked, and if it appears that the major companies dominate the offshore area, it is due to the governmental policies on leasing where the highest dollar bidder gets the leases. With the vast sums bid for these tracts, few independents can afford these stakes. If more competition here is desirable, offshore leases should be granted on the basis of retained interests, overrides, etc., rather than the highest dollar bidder.

As an independent, I have no great affection for any of the major companies which are presently under investigation. However, I respect them as an essential part of the oil and gas industry, vital to the survival of the independent producer. At times they appear to be hard traders and unconcerned about our welfare; however, there is an important interrelationship which you should understand. Ready markets for crude production are essential for the independent operator to survive. The major companies provide this ready market, in most cases, and further they provide through their common carrier pipelines a vital access to refineries in the producing areas.

IF YOU DISMEMBER these major companies by separating production, marketing, refining, and transportation, utter chaos will result in the field of oil and gas exploration. If an independent discovers a field and cannot then find a practical means to transport his production to the nearest refinery, he would be prohibited from building his own pipeline to transport this oil, and for that matter from building his own refinery to process the oil.

Under the present highly competitive situation prevailing among the major companies, an independent producer can reliably depend upon bids from several of the major companies for his production, and these bids will include, in most cases, free transportation of the crude oil from the well site to the major's refinery. After all, it is the crude oil which is the key to the negotiations.

CONSIDERING THE FACT that you were seriously considered in the South as a presidential candidate in the last election, I am certain that you have the interest of the nation's consumers at heart. The destruction of the domestic oil and gas industry, including the independent sector, would certainly not serve this purpose. I sincerely ask that you consider the plight of the independent producer who drills the vast majority of all the exploration wells in this country, and that you not recommend counter productive tax increases, cuts in the depletion allowances or tax preference chantes which would destroy the incentive and the ability of the independent to carry out his vital national roll.

If I can be of service to you or to your committee in the conducting of your investigation, please let me know.

DALTON J. WOODS,  
Suite 1412  
Mid South Towers,  
Shreveport.

## personal news-

**Bill Mueller**, Geophysicist with Union Oil Company of California in Jackson, has accepted a transfer to Union's New Orleans office. Bill will assume his new duties in New Orleans around October 1st.

**Clarence Johnson**, geologist with Gulf Oil in Midland, Texas, has been transferred to Gulf's Columbia, Miss., office as Production Geologist, effective 8/6/73.

**Frank Everett**, Geophysicist with Citgo in Jackson has resigned and accepted a position with Conoco in Ponca City, Oklahoma. Frank was President-Elect of the Jackson Geophysical Society for 1973-1974.

**Eugene "Jeep" Garrett**, Production Geologist with Gulf Oil in Columbia, Miss., has been transferred to Gulf's Lafayette, Louisiana office, effective 8/6/73.

**Victor "Vic" Fisher** has accepted a position with the Mississippi Geological Survey.

## aapg news-

International Symposium on Underground Waste Management and Artificial Recharge

Another crisis is looming on the horizon for our affluent society. Hard on the heels of the energy crunch, the meat shortage and high interest rates is the growing problem of waste disposal. The Environmental Protection Agency, in a report to Congress, warns that unless something is done to control the dumping each year of more than 10 million tons of dangerous waste materials, the country will be turned into "an ultimate sink." Disposal of fluid wastes deep below the earth's surface offers a partial solution to the problem.

The second International Symposium on Underground Waste Management and Artificial Recharge will be held September 26-29, 1973, at the Fairmont-Roosevelt Hotel, New Orleans, Louisiana. This 3-1/2 day meeting will offer the only opportunity over the next two years for interested individuals and organizations to become updated on the state of the arts of liquid waste disposal in deep wells, and of water storage by artificial means for industrial and public use.

Forty-six papers will cover current technical, political, legal, operational, and economic aspects, and will be available in two volumes of "Transactions" which are included in the registration fee. The two topics to be considered are critical facets of the total environmental problem. The proceedings will be of interest to a broad spectrum of persons in the industrial, governmental, legal and environmental fields.

The symposium is jointly sponsored by the American Association of Petroleum Geologists, the United States Geological Survey and the International Association of Hydrological Sciences. Information may be obtained by writing AAPG, P. O. Box 979, Tulsa, Oklahoma 74101.



## progress-

by Jimmy Walker

### Mississippi Completions - August 1973

Exploratory	Oil	Gas	Dry
Eocene	1	0	7
UK	0	0	2
LK	0	0	4
Jurassic	1	1*	3
Paleozoic	0	0	3

\* New Pay - Dexter Field Skelly No. 1 Pittman Sec. 1-1N- 12 E, Walthall Co. IP/F (Rod) (14,672 - 698') 1100 MCFGD + 3 BCPD + 75 BWPD 1/2 ch. FTP 1100 GOR 366,667-1, 9?

Development	Oil	Gas	Dry
Eocene	1	0	3
UK	0	0	1
LK	0	0	1
Jurassic	0	0	1
Paleozoic	0	0	1

### New Field Discoveries

Waldrup Field 4/5/73	Continental No. 1 Grief Bros. Sec. 12 -1N- 11 E, Jasper Co. IP/P 145 BOPD + 315 B5WPD Gravity 41 degrees (15162-72 CV)
Silver Creek Field 7/25/73	James B. Furrh No. 2 Crosby Sec. 5- 3N - 1W, Wilkinson Co. IP/F 120 BOPD + 2 BWPD 12/64 ch FTP 190, Grav. 35 degrees (Parker 7105½ - 07½)

## USM RECEIVES GRANTS

Dan Sundeen, of the University of Southern Mississippi, is the recipient of a Grant from the National Science Foundation entitled "Structure and Distribution of Volcanic Rocks Buried in Northwest Mississippi." Phillip Cook, graduate student at USM, will be awarded a stipend to participate in this study.

Also, the office of Water Resources has awarded a grant to Oscar Paulsen and George Pessoney. This study, a "Reconnaissance of the present state of knowledge of flushing characteristics and water quality in incoastal canals," is being conducted in conjunction with the USM Biology Department.

Paulsen and B.W. Brown are involved in a clay study of Forrest County which was made possible by another grant from NSF. This project is concerned primarily with mapping the Hattiesburg Formation and should prove invaluable to city planners, home builders, and anyone else involved in the construction business. The graduate assistant in this study is Robert Denehie.

## publications-

The Geological Society of America has a new bulletin out which consists of quick publications on current hot subjects, Vol. 1, No. 1, Sept, 1973.

The Mississippi Geological Survey is having a paper, "Acker Lake Landslide, Monroe County, Mississippi," printed. This article, written by Donald M. Keady, Ernest E. Russell, and Troy J. Laswell, will contain approximately 10 pages of illustrations and 25 pages of text.

## SURVEY LIBRARY

The library at the Mississippi Geological Survey is currently being reorganized and cataloged with the assistance of the Mississippi Library Commission.

The Survey Library consists of books and materials pertaining to geology, geophysics, and related sciences. When the Survey receives duplicates of its holdings it acts as a "clearing house" by distributing the duplicates to state supported colleges and universities for their libraries and/or geology departments. It is hoped that this policy will provide useful information for students currently enrolled in geology curriculums in Mississippi.

The Survey has numerous gaps in its holdings that you might be able to fill. If you have any material that you would like to donate please call or write the Survey. All donations are tax deductible.  
Cynthia Cate, Librarian  
Mississippi Geological Survey  
P. O. Box 4915, Jackson, Mississippi  
Phone 354-6228

## MID-CONTINENT REGIONAL MEETING

The Tulsa Geological Society will host the Mid-Continent Section of the AAPG, Oct. 3, 4, 5, 1973, in Tulsa, Oklahoma. The theme of the program is entitled "Petroleum Explorationists Challenge the Energy Crisis." Keynote speaker is Wilson Laird, Director, Committee on Exploration, American Petroleum Institute, and key speakers are W. R. Walton, Amoco Production Company, who will present a paper entitled "Significant Properties of Sandstones - Aids to Exploration and Exploitation" and K. W. Klement of the University of Texas at El Paso who will talk on "Comparative Lithostratigraphy of Major Carbonate Reservoirs in the World." In addition, twelve technical papers will be presented.

For information with regards to advertising, exhibitors, hotel accommodations, pre-registration, etc., contact Mr. Don Ott, Geodata Corporation, 1420 Thompson Building, Tulsa, Oklahoma 74103.

## OCEANS AS CO PRODUCER

As a result of recently published data by a team of scientists at the Naval Research Laboratory in Washington, D.C., it appears that the oceans might rival man as a source of carbon monoxide in the atmosphere.

Using measurements of seaborne CO collected from 14 locations in the Northern Hemisphere between 80° N and 78° N, the team calculated that the production of CO by the Northern Hemisphere's waters is approximately 34 percent of the 260 trillion grams of CO released annually by man. If the production of CO in the oceans in the Southern Hemisphere, which are larger, is at a similar rate, then the world's oceans are estimated to produce 220 trillion grams of CO per year, or 85 percent of man's portion.

## HOUSTON GEOLOGICAL SOCIETY 1973-1974

### OFFICERS

President	Ben-J. Sorrell
1st Vice President	Sabin W. Marshall
2nd Vice President	Anthony Reso
Secretary	Gay C. Helm
Treasurer	Clyde Beckwith

### EXECUTIVE COMMITTEEMEN

Rufus J. LeBlanc  
Edward G. Lipp  
Denny Bartell  
Martin M. Sheets  
John J. Amoroso



## NEW ORLEANS GEOLOGICAL SOCIETY

### OFFICERS

President .....	George D. Severson
1st Vice President .....	Marvin Dwight
2nd Vice President .....	Rudy Siegert
Secretary .....	Jack Reinhard
Treasurer .....	Robert F. Walker

### DIRECTORS

Frank C. Crawford  
J. A. Gilreath  
Robert Capps  
A H. Barton

### CONCERNING MATERIAL FOR AAPG BULLETIN

As reported in NOGS TOG, the president of the New Orleans Geological Society, George Severson, received a letter from Gary Howell, Managing Editor of the AAPG BULLETIN, in which Howell commented on the problem of receiving material too late for publication in the BULLETIN, and asked for feedback from members. Following are two paragraphs from Mr. Howell's letter:

"At present the lead time for publication of material is three and one-half months before the month in which you wish the material to appear. General announcements, Society field trips, and other information which you desire published in the BULLETIN should be sent to me as soon as possible for placement in the At Home and Abroad or Association Round Table. Through this effort I hope we can provide an improved publicity program for all of the Society meetings and functions.

"Finally, I wish to ask you to inform your Society membership that I encourage their suggestions, complaints, and comments regarding the BULLETIN. Input of ideas from the membership can only result in an improved BULLETIN and more important, a strengthened association. Please remember the BULLETIN belongs to the membership and is only as far removed as a letter or phone call. In essence I am asking you to please help us to help you."

Portion of Mr. Howell's letter reprinted from NOGS-TOG.

## HOUSTON GEOLOGICAL SOCIETY

### Publications List

The following publications of the Houston Geological Society are available through the HGS Business Office, 234 Esperson Building, Houston, Texas 77002, Attn: Publications Department.

1971 - ABNORMAL PRESSURE STUDY REPORT .....	\$5.00
1971 - H.G.S. - G.S.H. PHOTO DIRECTORY .....	\$7.50
1966 - DELTAS in Their Geologic Framework .....	\$9.00
1966 - DELTA SLIDES (24 slides-companion to above) .....	\$8.50
1968 - HOLOCENE Geology of the Galveston Bay Area - Compiled by Robert R. Lankford and John J. W. Rogers .....	\$5.00
1971 - DELTAS of the World, Modern and Ancient - a bibliography .....	\$1.50
1968 - WILCOX - Field Trip Guidebook - Environments of Deposition Wilcox Group - Texas Gulf Coast .....	\$5.00
1962 - TYPICAL OIL & GAS Fields of Southeast Texas .....	\$3.25
1962 - GEOLOGY OF THE GULF COAST and Central Texas ..	\$2.00
1959 - STUDY GROUP REPORT - Frio Formation of the Upper Coast of Texas .....	\$1.00
1959 - MAPS - Geological Strip Map - U.S. Highway 80 & 90 Louisiana State Line to New Mexico State Line .....	\$.50

## IN SUPPORT OF PROFESSIONAL CERTIFICATION

The following is an article written by B. W. Brown in support of professional certification of geologists. Any comments, pro or con, on this subject are encouraged and will be printed.

Editor

One of the goals which A.I.P.G. is working toward and which I think all geologists should support is professional certification of geological education in Mississippi. This could assure a permanent reservoir of properly trained professionals.

At this point in time it is questionable which schools in the state could measure up to the expectations of geology. But certainly the certification could well be the proper leverage with which to pry our "mission-oriented" college administrators.

Those who control our educational destinies seem to hold an attentive ear to the market place. However, the present Mississippi emphasis on "life sciences" education to the almost virtual exclusion of geological affairs seems to be counter to a national economic trend. Our college administrators would do well to read what Barron's financial weekly (Sept. 3, 1973, P. 12) has to say about the employment "futures" in the "life" and "environmental" support sciences. It is this conservative financial paper's view that "biologists are becoming to glut on the market" and majors in life sciences may be led into a "route which may well lead nowhere".

Perhaps it is time to return to teaching geology as a major aspect in the human environment. Certainly it is time to make certain that adequate geology training goes into environmental missions.

B. W. Brown  
Employment Opportunities Committee  
A.I.P.G.



### SURVEY DIRECTOR SPEAKS ON OFFSHORE LEASING

At the recent Department of Interior Hearings on proposed offshore leasing in the northeast gulf, held in Tallahassee, Florida, State Geologist, William H. Moore, called attention to two particular areas of interest concerning Mississippians.

Moore stated that there have been very few wells drilled in the coastal area of Mississippi in the offshore waters and that information in this area is meager. Any exploration in these waters, whether or not oil and gas is discovered, would add to the knowledge of the geology beneath Mississippi's waters and would enable officials of the State to make a better evaluation as to whether or not Mississippi's lands should be leased. This information would also enable companies interested in the Mississippi waters to make a more intelligent search for energy resources beneath these waters.

Moore pointed out that Mississippi was concerned not only with oil and gas but with other possible sources of energy and that the Mississippi Geological Survey is presently undertaking studies of two other possible energy sources. In cooperation with the Mississippi Research and Development Center and the Bureau of Mines, the Survey is investigating the lignite resources of the State with a systematic drilling and testing program.

Possible geothermal resources are being studied through an analysis of some 9,000 wells in the State. This project is in cooperation with the Mississippi Oil and Gas Board, Mississippi Research and Development Center and possibly the National Science Foundation.

-Reprinted from Clarion-Ledger



<b>LONE STAR PRODUCING COMPANY</b> Gerald W. Kinsley District Geologist & Office Manager 1530 Capital Towers Jackson, Miss. 39205		P. O. Box 219 601-969-0100
AMERICA SOUTHWEST CORP. Box 936, Jackson, Miss. Gulf Coast Drilling & Exploration		354-2513
<b>GUARDIAN OIL COMPANY</b>		
L. Graham Hughes 1636 Capital Towers	Charles S. McClelland Jackson, Mississippi	
<b>L. E. WALTER, JR.</b> Consulting Geologist		
1402 Standard Life Building Jackson, Mississippi 39201	Office 948-5169 Residence 982-4293	
<b>H. E. KARGES</b> Consulting Geologist		
1812 Capital Towers Phone 352-0972	P. O. Box 1635 Jackson, Miss. 39205	
<b>DELTA EXPLORATION CO., INC.</b> A Seismic Computing Corp. Subsidiary		
P. O. Box 2669 Jackson, Miss. 39207	(601) 355-9636 Cable: DELTEX	
<b>SECAN OIL COMPANY</b>		
Natchez, Miss. 445-5634	New Orleans, La. 529-1255	Vidalia, La. 366-5846
P. O. Box 1246 - Natchez, Miss.		
<b>FLORIDA GAS EXPLORATION CO.</b> 1444 Capital Towers Jackson, Mississippi 39201		
<b>DON F. HUGUS, JR.</b> 554 First National Bank Bldg. Jackson, Mississippi 39201		
<b>JOHNSON-DANIEL DRILLING CO., INC.</b> 213 S. Lamar - Jackson, Mississippi P. O. Box 864 Brookhaven, Mississippi		
<b>HILTON L. LADNER</b> Petroleum Geologist 903 FNB Building Jackson, Mississippi		
354-3616		
<b>ATWATER, COWAN, CARTER MILLER &amp; HEFFNER</b> Geological and Petroleum Consultants 424 Whitney Bank Bldg. New Orleans, La. 70130 581-6527		
<b>ROBERT R. JACOBS</b> Petroleum Geologist P. O. Box 16263 Jackson, Mississippi 39206 362-4846		
<b>R. E. DICK LEE AND ASSOCIATES</b> Geophysical Assistance P. O. Box 5165 F.S. Jackson, Miss. 39216 601-982-0272		
<b>JUSTISS-MEARS OIL CO., INC.</b> P. O. Drawer "N" Jena, Louisiana 71342 (318) 992-4000		

<b>G. W. GULMON &amp; ASSOCIATES</b> Petroleum Geologists Natchez, Mississippi		
H. E. Hansen, Dallas	A. T. Ricci, Jr., Natchez	
<b>LARCO DRILLING COMPANY, INC.</b>		
Suite 1700 Capital Towers	Jackson, Miss. 39201 Ph. 355-1542	
<b>DAVID K. BROOKS</b>		
660 Milner Building	Jackson, Mississippi	
<b>LOCATION SAMPLE SERVICE, INC.</b> Bob Legate		
Jackson, Mississippi 982-2766	Laurel, Mississippi 428-1507	
<b>W. L. HARPER</b> Geophysical Consultant		
115 Sterling Towers	Jackson, Miss. 39202 Phone 601 - 352-3339	
<b>EXCHANGE OIL &amp; GAS CORPORATION</b>		
16th Floor 1010 Common Street	(504) 581-4111 New Orleans, Louisiana 70112	
<b>PAUL ANTHONY RADZEWICZ</b> Oil Producer		
840 Deposit Guaranty Bldg.	355-4549	Jackson, Miss. 39201
<b>DANIEL E. HERLIHY</b> Consulting Geophysicist		
Suite 301 ESI Bldg. Jackson, Mississippi 39216	1755 Lelia Drive	(601) 982-5412
<b>HALLIBURTON SERVICES</b>		
1408 Capital Towers, Jackson, Miss. R. W. (Bob) Graham	948-4128 T. C. Rader	
<b>PRUET &amp; HUGHES COMPANY</b> 1111 Capital Towers Building Jackson, Mississippi 39201		
<b>CENTRAL OIL COMPANY</b>		
P. O. Box 2097	Laurel, Mississippi 39440	
<b>A &amp; N PRODUCING SERVICES, INC.</b>		
709 Standard Life Building Jackson, Mississippi 39205	P. O. Box 1669	
<b>CORE LABORATORIES, INC.</b> Core Analysis and Well Logging		
Laurel 601-425-3394	New Orleans 504-524-6256	Brewton 205-867-7734
<b>WADE FORTENBERY</b> Geologist		
P. O. Box 1183 - Natchez, Miss. Office: Hwy 61 South	Bus. 442-6011 Res. 442-3250	



**ESI** has the know-how.

**PRECISION GRAVITY & MAGNETIC**  
Data · Interpretations · Field crews

**EXPLORATION SURVEYS INC.** 6400 N. CENTRAL EXPRESSWAY DALLAS TEX. 75206 AC 214/361-6663  
**A U.S. INDUSTRIES COMPANY.** And that makes a world of difference.

**SHENANDOAH OIL CORPORATION**

507 Standard Life Building  
Jackson, Mississippi

**ALAN JACKSON**

Consulting Geologist Telephone 601-582-1192  
503 Mandalay Drive Hattiesburg, Mississippi 39401

**DEEJAY COMPANY**

**MOON - HINES**

Robert M. Moon E. R. Hines, Jr.  
1804 Capital Towers Jackson, Mississippi 39201  
601 - 354-3753

**WILBUR H. KNIGHT**

Consulting Geologist  
1020 First Nat'l. Bank Bldg. Jackson, Miss. - 355-1528

**CALLON PETROLEUM CO.**

Box 1287 Natchez, Mississippi 39120

**WOOLF & MAGEE, INC.**

P. O. Box 635 P. O. Box 594  
Tyler, Texas Natchez, Mississippi

J. W. ARNOLD, President  
A. W. WOOLF, Vice President  
W. D. MAGEE, JR., Secretary-Treasurer

**DRESSER-ATLAS**

Jackson, Mississippi Phone 948-5591

**THOMAS H. CLEMENTS**

Consulting Geophysicist  
903 Standard Life Bldg. Phone 601/355-8724  
Jackson, Mississippi 39201

**RIDGWAYS**

103 E. Pearl Street 355-4751  
Jackson, Mississippi

**JAMES W. HARRIS**

Oil Operations P. O. Box 1027  
1840-46 Capital Towers Jackson, Mississippi

**M. D. MYERS**

Consulting Geologist Phone 355-3536  
P. O. Box 10553 Jackson, Mississippi 39209

**SCHLUMBERGER WELL SERVICES**

Jackson, Mississippi Phone 352-8589

**SEISMOGRAPH SERVICE CORP.**

A Subsidiary of Raytheon Corp.

Don Underwood, Mgr. Gus Fiongos, Mgr. Data Proc.  
Jackson, Mississippi Phone 982-9120

**HERBERT J. FERBER**

Consulting Geophysicist 956-4666  
5456 Hartsdale Drive Jackson, Mississippi

**GEOMAP COMPANY**

MAPPING SERVICES  
BASE MAPS · REFERENCE MAPS

DALLAS HOUSTON MIDLAND DENVER

**MISSISSIPPI GEOLOGICAL SOCIETY**

P. O. Box 422  
Jackson, Mississippi 39205



# NEWS

# BULLETIN

## LIBRARY

MISSISSIPPI GEOLOGICAL ECONOMIC  
& TOPOGRAPHICAL SURVEY

mississippi geological society



XXI

VOL. ~~XXXI~~, NO. 3, NOVEMBER, 1973

## OIL INDUSTRY MYTH TOPIC NOV. 16

### JACKSON CONSULTANT TO SPEAK TO MGS

The November meeting of the Mississippi Geological Society will be held Tuesday, November 13, 1973, at Primos Northgate. Guest speaker for the evening will be Mr. Wyatt E. Craft, Petroleum Geologist, Jackson. Mr. Craft will present a paper entitled "Myths and Fallacies Currently Employed in The Oil Business." Social hour will be held at 5:30 p.m. and dinner will be served at 6:30 p.m.

Mr. Craft, originally from New Albany, Mississippi, received his Bachelor of Science in Petroleum Geology from Mississippi State University in 1953.

Upon graduation, he joined the United States Army as a Lieutenant and served until 1955. He is currently a Major in the United States Army Reserve.



WYATT E. CRAFT

After serving his active duty in the Army, Mr. Craft joined Pan American Petroleum Corporation. He has been self-employed since 1959.

All MGS members and guests are encouraged to attend to hear this talk.

\*\*\*\*\*

*A golfer lost several new balls by hitting them into a lake, onto the highway, and then into the woods. "Why don't you use an old ball?" asked the caddy. The Duffer lamented, "I've never had one."*

\*\*\*\*\*

### MATEKER TO SPEAK TO JGS

The November meeting of the Jackson Geophysical Society will be held the 19th of November at the King's Inn in Maywood Mart, I-55 North. Dr. Emil J. Mateker, with Western Geophysical Company, will present a paper entitled "Lithology From True Amplitude Recovery."

An invitation is extended to all interested MGS members. A social hour will be held at 5:30 p.m. and dinner will be served at 6:30 p.m.

### MYTHS AND FALLACIES CURRENTLY EMPLOYED IN THE OIL BUSINESS

#### ABSTRACT

**MYTH:** An imaginary of fictitious thing; A false opinion, belief or idea.

**FALLACY:** An erroneous or misleading notion; unsoundness or incorrectness in belief or judgement; reasoning contrary to the rules of logic.

This paper discusses myths and fallacies used in the operational area of today's oil exploration. These myths and fallacies have been isolated as the normal mode of operation in our profession in many cases. That such myths and fallacies do exist to the detriment of oil investment and exploration is not readily or admittedly apparent to most operators. The writer attempts to point out the various myths and fallacies and the predictable result of an operators activities based on these myths and fallacies. Remarks will be offered as a reminder as to what is "The Name of the Game".

#### MISSISSIPPI GEOLOGICAL SOCIETY CALENDAR

- |            |  |
|------------|--|
| OCT. 24    | Gulf Coast Association of Geological Societies<br>23rd Annual Meeting<br>Shamrock Hilton Hotel - Houston, Texas                |
| NOV. 7-9   | Gas Exploration Symposium<br>Sponsored by The West Texas Geological Society<br>Sheraton Motor Inn (Downtown)<br>Midland, Texas |
| NOV. 11    | Petroleum Auxiliary - Sherry Party<br>Kerry Briggs home<br>5452 River Thames - 3 - 6 P.M.                                      |
| NOV. 12-14 | Geological Society of America<br>86th Annual Meeting<br>Dallas Convention Center - Dallas, Texas                               |
| NOV. 13    | MGS Craft Talk - Primos Northgate<br>Social Hour 5:30 p.m. - Dinner 6:30 p.m.  |
| NOV. 19    | JGS Mateker Talk - Kings Inn<br>Social Hour 5:30 p.m. - Dinner 6:30 p.m.   |

FOR RESERVATIONS TO THE NOV. 13 MEETING, CALL T. C. RADER'S OFFICE BY NOON MONDAY, NOV. 12, PHONE 948-4128.



## MISSISSIPPI GEOLOGICAL SOCIETY

### OFFICERS

Larry Walter	President	Consultant
W. E. (Gene) Taylor	1st Vice President	Consultant
Harry E. Frltz	2nd Vice President	Gulf Oil Co.
Elwood M. Ruhl	Secretary	Florida Gas Explor. Co.
John D. Myers	Treasurer	Placid Oil Co.

### REPRESENTATIVES

Stewart W. Welch	AAPG House of Delegates	Consultant
Howard Samsel	AAPG House of Delegates	Union Oil of Calif.
Frank Murrell	GCAGS	Ashland Oil Co.
Jerry Zoble	GCAGS	Consultant

### NEWS BULLETIN STAFF

Sarah Childress	Editor	Miss. Geological Survey
John McCarty	Assistant Editor	Miss. Geological Survey
Paul Gribas	Advertising Mgr.	Shenandoah Oil Co.
John Rlchart	Personal News	Union Oil of Calif.
Jimmy Walker	Statistics	Amoco Production Co.

PRINTED IN JACKSON, MISSISSIPPI

## FALL BARBEQUE

The annual fall barbeque was held Friday evening September 26 following the "Duffer's Delight" Golf Tournament. A total of 125 members were in attendance. The affair was held at Fowler's Lodge on the Ross Barnett Reservoir. Parched peanuts, barbequed sausage, and kegs of ice cold beer prefaced one of the finest meals ever to be served. The barbeque was prepared by Halliburton personnel and they outdid themselves once again. The menu included barbequed ham steak, ribs, beef, chicken and sausage. Complementing this fine array of delicious meats were homemade biscuits, both plain and with cheese, beans, potato salad, olives, pickles and cheeses.

Thank you Halliburton men, and thank you members of committees who helped serve and do various other sundry chores. Once again we can say that this "Septemberfest" was the best ever.

## personal news-

**Eric Jensen**, Geophysicist with Cities Service Oil Company, has been promoted to Geophysicist 3.

**Billy Ishee**, formerly with Delta and John McComas, formerly with Murphy Oil are now Geophysicists with Cities Service in Jackson.

**Lars Johnson**, Texas A & M graduate, has been employed by Cities Service in Jackson.

**Charles Rhodes**, scout with Superior, is now located in Jackson. Charlie was formerly in Corpus Christi, Texas.

**Mickey McGuire**, Chevron scout, has moved to Jackson from Shreveport, Louisiana.

## TIDAL BULGE OF EARTH

According to information obtained from precise laser tracking of the Beacon Explorer C satellite, the bulging of the earth due to gravitational pull by the sun and the moon is apparently less than formerly believed.

Deflections of the satellite's orbit were calculated by reflecting laser beams from mirrors aboard the satellite. Geodesists subtracted the direct effects on the satellite from the gravity of the earth, sun and moon, and, also, the sun's radiation pressure and found that the remaining deflection, due to the effects of the earth's bulging from solar and lunar attraction, suggested a bulge of approximately .245 seconds of arc.

Prior to this, the bulge was thought to be about .3 seconds of arc as reported by David E. Smith of Goddard Space Flight Center in the August 24 NATURE.

## "DUFFER'S DELIGHT" HELD SEPT. 21 MIKE PRYOR WINNER

The annual Mississippi Geological Society Golf Tournament was held September 21 at the Live Oaks Golf Club. Mike Pryor dominated play by winning or tying six of the sixteen prize categories. Under the one individual prize per player rule, however, Mike was limited to the championship prize, including the Dresser Traveling Trophy, which he won with an excellent 75. Rip Mason captured second place with a fine 78. Low net honors went to David Brooks and Benton Vernon took second low net.

An exceptionally thirsty crowd of 52 turned out for the event which was played on an excellent course in beautiful weather. Golf Chairmen Tom Clements and Dave Cate extend their gratitude to Buddy Twiner and his aides Joe Bradley and Al Beasley for their invaluable service during the tournament. The tournament was supported by the following contributors who also deserve the support of the membership.

Oil Well Logging Co., Inc.  
Location Sample Service, Inc.  
L. L. Ridgway Enterprises, Inc.  
America Southwest Corp.  
Frank Howson Associates  
Engineering Service  
Delta Exploration Co., Inc.  
Neely Blue Print & Supply Co.  
Schlumberger Well Services  
Geomap Company  
Dresser Atlas  
Southland Royalty Co.

There were several ties in the various prize categories but these were settled by best scores on the low handicap hole or holes. Eventual winners were:

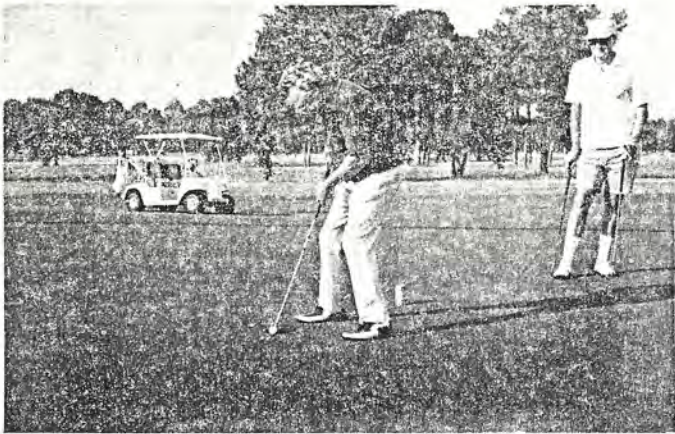
Low Gross - Mike Pryor (75)  
2nd Low Gross - Rip Mason (78)  
Low Net - David Brooks (72)  
2nd Low Net - Benton Vernon (72)  
Low Ball Foursome - Mike Pryor, Jack Pryor, Charles Barton, Verne Culbertson (69)  
Least Putts - Jerry Zoble (25)  
Longest Drive - Windle Wilhite (270)  
Closest to Hole - Harold White (5'5")  
Most Birdies - Prentiss Boatner (2)  
Most Pars - Verne Culbertson (12)  
Most 3's - Jack Pryor (4)  
Most 4's - Ed Luper (8)  
Most 5's - Dave Cate (9)  
Most 6's - Miller Goodger (8)  
Most Improved Score - Bob Neely (13 strokes)  
From 1972 Tourney  
High Gross - Bill Mueller (125)

Free golf balls were also awarded to Harold White, Tom Clements, Jeff Tucker, Ray Foil, Mike Pryor, Verne Culbertson, Prentiss Boatner, Vaughn Watkins, David Brooks, Bob Neely and Bill Moore holding the No. 7 green with their tee shots.

## SPONSORS FOR NOVEMBER MEETING

DRESSER - ATLAS  
HALLIBURTON





**ART HEISER AND GENE TAYLOR**



**DOUG HARPER**



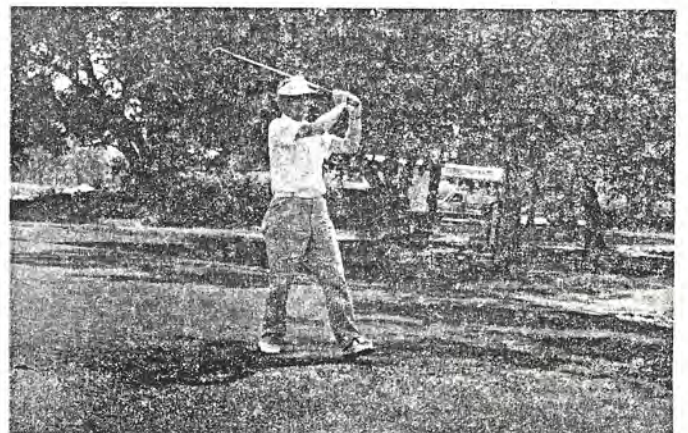
**WILBUR BAUGHMAN, BILL MOORE, ED LUPER**



**DEAN KEBERT**



**GENE TAYLOR**



**ED LUPER**

**WASTE PAPER TO CLEAN UP OIL SPILLS**

The fibers of waste paper have been used successfully to clean up oil spills, according to a report from the U.S. Army Natick Laboratories. The report indicates that the critical element is fiber size, which depends on the milling process used to pound the paper down to fiber. Maximum oil absorbency is attained when fibers are 0.01 to 0.1 millimeters in diameter and 0.75 to 10.0 millimeter in length. When spread over a floating oil slick, these fibers can absorb some 28 times their weight in oil and they absorb oil much more readily than water, which has not been the case with previous substances that have been used to clean up previous oil spills. This process has been successfully tested in a small lagoon with a man-made oil spill and the Army plans further large-scale tests.

*Sincere apologies to Germany Investment Company of Natchez, Mississippi and Dallas, Texas, for omitting their advertisement in the October Bulletin.*



## OFFICER CANDIDATES

Distinguished geologists from the east, southwest, and Pacific Coast comprise the American Association of Petroleum Geologists' slate of candidates for the 1974-75 year. The names of the candidates were made public by Dr. Daniel A. Busch of Tulsa, current AAPG president.

The slate is headed by two prominent Los Angeles geologists, John E. Kilkenny, a vice-president of Union Oil Co. of California, and Henry H. Neel, a partner in the consulting firm of Morgan, Neel and Associates. The successful candidate will serve as president-elect during the 1974-75 year and assume the presidency in July, 1975.

Merrill W. Hass, vice-president for exploration of Exxon Co., U.S.A., is the current president-elect and will become president next July. Others carrying over from the 1973-74 executive committee will be Bernold Hanson, secretary, Midland, Texas, and Frank Kottlowski, editor, Socorro, New Mexico.

Two prominent consulting geologists from Dallas, John C. Dunlap and Duncan A. McNaughton, are nominees for the office of vice-president, while two eastern geologists will run for a two-year term as treasurer - George C. Grow, Jr., Transcontinental Gas Pipe Line Corp., Newark, N. J., and James A. Noel, Wright State University.

Both president-elect candidates are natives of California. Kilkenny was born in Salinas and received his degree in geology from the University of California. He is current with Union Oil Company of California, serving as geological coordinator of their Geothermal Division and as vice president of Philippine Geothermal, Inc. Beginning his career as a seismic computer with the Texas Company, Kilkenny subsequently held positions with Superior Oil, Olson's Scouting Service, Pure Oil, and Chancellor-Canfield Midway Oil prior to joining Union in 1951. He served as AAPG vice-president in 1968-69 and was awarded honorary membership in 1972.

Neel was born in Los Angeles and graduated from Stanford University. He is currently a partner in the Los Angeles consulting firm of Morgan, Neel and Associates. Neel's career began in 1942 with Tidewater Oil (now Getty), where he rose through the ranks from sample washer to Division General Manager of the International Exploration and Production Division in Los Angeles. He left in 1962 to begin a career as a consulting geologist. Neel has served on several AAPG committees and was president of the American Institute of Professional Geologists in 1970.

Vice-presidential candidate John Dunlap was born in Dunlap, N. C., and attended North Carolina State and the University of North Carolina where he received his degree in geology. Since 1959 he has operated as a world-wide consultant with offices in Dallas. Dunlap began his career in the geologic division of the TVA and later worked as a geologist for Mene Grande Oil (Gulf) in Venezuela, Union Sulphur and Oil Corp., the United States Geological Survey, and the firm of DeGolyer and MacNaughton. He has served as president of both the Dallas Geological Society and the AAPG's Southwest Section.

Duncan McNaughton, also a candidate for the vice presidency, was born in Cornwall, Ontario, Canada, and has degrees in geology from the University of Southern California and California Institute of Technology. He is currently a consulting geologist with offices in Dallas, Texas. McNaughton has held positions with the Canadian Geological Survey, Texas Petroleum Company (Colombia), the University of Southern California, Gulf Oil, and two other consulting firms. He has served on several AAPG committees.

George Grow, candidate for treasurer, is a native of Stafford, N.Y., receiving his geology degree from Lehigh University. He is currently with Transcontinental Gas Pipe Line Corp., Newark, N. J., and has held positions with Standard Oil Co., Venezuela, and Peoples Natural Gas Co. of Pittsburgh. Grow has served as president of the Pittsburgh Geological Society and the AAPG's Eastern Section. He is currently vice president of the AAPG's professional division.

Treasurer candidate James Noel was born in Willaimstown, Pa., and received degrees in geology at Lehigh, Dartmouth, and Indiana University. He is now assistant dean at the western Ohio branch campus of Wright State University. Prior to joining the Wright State faculty, Noel held positions with Western Electric, the U.S. Geological Survey, Creole Petroleum (Venezuela), and Union Oil. He taught geology at Northeastern State College, Natchitoches, La., for four years. In 1971, Noel served as president of the Ohio Geological Society.

The American Association of Petroleum Geologists is the world's largest geological association with membership representation in more than 80 countries.

## GOVERNMENT AND OFFSHORE LEASES

Payment of huge bonuses to the Federal Government for offshore leases "is little more than a deadweight penalty imposed on industry," Dr. Daniel A. Busch of Tulsa, said in a talk to the Marine Technology Society, meeting in Washington.

Busch, who is president of the American Association of Petroleum Geologists, said he preferred that his remarks be construed in his private role as a consulting petroleum geologist, rather than his official AAPG capacity.

Using the December, 1972, Gulf of Mexico sale as an example, Busch pointed out that \$1.6 billion was paid in high bids for leases.

"This \$1.6 billion," he said, "if made available to the industry through a system of federal subsidy, would pay the entire cost of 1,600 wells having an average cost of \$1 million each.

"By using this money as a wildcat subsidy, a high percentage of all presently known anomalies could be drilled with an initial test. Discovery to dry-hole ratios offshore have been considerably higher than onshore. If, however, the ratio were as low as one success to nine dry holes, we could count on a rapid improvement in our reserve picture. . . .

"With increased discoveries and production, the Government would be likely to substantially increase its 'take' through increased royalties and income taxes. These should far exceed the amounts surrendered through subsidizing wildcat drilling."

Busch quoted Michel T. Halbouty of Houston, well-known geologist and independent oilman, as suggesting that the high, winning bids at offshore lease sales be accepted by the Federal Government as "commitments to spend those sums in exploration and development drilling on the awarded tracts."

Any portion of the bid money not so spent would be paid to the Federal Government.

"This recommendation," he said, "would certainly stimulate offshore drilling activity."

Busch described how Australia, starting 15 years ago, sought to correct its deficiency in petroleum by offering to subsidize up to 80 percent of wildcat dry hole costs.

"This subsidy was not automatic," he pointed out, "but contingent on review and approval by Government geologists and geophysicists. This program has been so successful that Australia soon will be self sufficient in hydrocarbons, and their subsidy program will be terminated July 1, 1974."

When successful bidders on offshore leases wind up paying far more than their nearest competitors - "leaving money on the table," as the expression goes - there is always the nagging question of whether they over-bid or the competitors under-bid. Bidding obviously is done on an individual company's appraisal of what a given tract is worth.

Busch pointed out that a wildcat support plan such as that proposed by Halbouty, or the Australian plan, could be supervised by the U.S. Geological Survey without either tax money or outside federal spending. "Industry's money would be recycled and spent to the best advantage of everyone."

Busch outlined many of the technical factors entering into a company's bonus bid, and pointed out that there is usually a wide range in the bids submitted by competing companies.

(continued on page 5)



# progress-

## Mississippi Completions - September 1973

	0.1	Gas	Dry
Exploratory	0.1	Gas	Dry
Eocene	1	0	6
UK	0	0	1
LK	0	0	2
Jurassic	0	0	2
Paleozoic	0	0	0
Development	0.1	Gas	Dry
Eocene	2	0	4
UK	1	1	2
LK	0	0	0
Jurassic	2	0	1
Paleozoic	0	2	1

### New Field Discoverv

Odgen Bayou Field  
9/11/73  
Radzewicz, et. al. No. 1 Goosset  
Sec. 25-6N-3W, Adams Co.  
IPP 75 BOPD + 2% BSW  
Gravity 27°  
(Wilcox perfs 3323½' - 26')


\*\*\*\*\*

*Golf is a lot like taxes. You drive hard to get to the green and then wind up in the hold.*

\*\*\*\*\*

*A caddy is a guy who stands behind a golfer and who didn't see where it went either.*

<b>TRIAD OIL &amp; GAS CO., INC.</b> Oil Property Management 1290 Petroleum Bldg. Jackson, Mississippi 355-9693	
<b>ROBERT L. THOMSEN</b> Jackson, Mississippi	
<b>JAMES B. FURRH, JR.</b> Oil Producer 1236 Capital Towers Jackson, Mississippi	
<b>L. WICK CARY</b> Consulting Geophysicist Room 932 National Bank of Commerce Bldg. Box 50391 New Orleans, La.	
<b>MARVIN L. OXLEY</b> Consulting Geologist 213 South Lamar Street Jackson, Miss. 39201 601-355-1841 601-956-6446	
<b>ROBERT WOMACK, JR.</b> Consulting Geologist 1509 Standard Life Bldg. Phone 353-4650 Jackson, Miss. 39201	
<b>SOUTHERN NATURAL GAS CO.</b> P. O. Box 1513 Donald R. Scherer, Dist. Geologist Houston, Texas 622-7270	

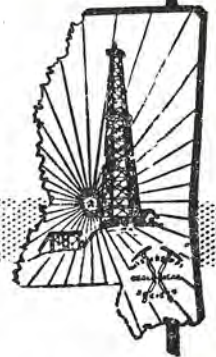
<b>FOREST OIL CORPORATION</b> 1535 One Shell Square New Orleans, La. 70139 504-524-5849	
<b>M. D. MYERS</b> Consulting Geologist P. O. Box 10553 Jackson, Mississippi 39209 Phone 355-3536	
<b>SCHLUMBERGER WELL SERVICES</b> Jackson, Mississippi Phone 352-8589	
<b>SEISMOGRAPH SERVICE CORP.</b> A Subsidiary of Raytheon Corp. Don Underwood, Mgr. Gus Fiongos, Mgr. Data Proc. Jackson, Mississippi Phone 982-9120	
<b>HERBERT J. FERBER</b> Consulting Geophysicist 5456 Hartsdale Drive Jackson, Mississippi 956-4666	
 <b>GEOMAP COMPANY</b> MAPPING SERVICES BASE MAPS • REFERENCE MAPS DALLAS HOUSTON MIDLAND DENVER	
<b>MORTON M. PHILLIPS</b> Petroleum Geologist 902-G Milner Bldg. - Ph. 355-3364 Jackson, Miss. 39201	
<b>FRANK HOWSON ASSOCIATES</b> 5531 Dyer St., Suite 110 Dallas, Texas 75206 214 - 361-8467	
<b>CLAUDE B. HAMMILL</b> Oil Operator 2306 First Nat'l. Bank Bldg. Houston, Tex. 77002	
<b>GERMANY INVESTMENT CO.</b> Norman G. Germany Dallas, Texas E. Wilson Germany Natchez, Mississippi	
<b>OIL WELL LOGGING, INC.</b> P. O. Box 16039 - Jackson, Miss. 354-3642	
<b>CRAFT PETROLEUM CO., INC.</b> Wyatt E. Craft Exploration Operations	



# NEWS

# BULLETIN

mississippi geological society



XXI no. 4  
VOL. ~~XVII~~, DECEMBER, 1973

## GULF PALEOZOIC FRONTIER TOPIC DEC. 11

### RETIRED EXXON GEOLOGIST TO SPEAK TO MGS

The December meeting of the Mississippi Geological Society will be held Tuesday, December 12, 1973, at Primos Northgate. Guest speaker for the evening will be Mr. Ray D. Woods of Houston, Texas. Mr. Woods is retired from Exxon, where he was Assistant Chief Geologist with the Professional title of Senior Petroleum Scientist.

The paper to be presented by Mr. Woods, entitled "The Northern Gulf Basin Paleozoic Frontier", was written jointly with Jim Addison, Division Geophysicist for the Gulf Coast Division of Exxon Company U.S.A.

All MGS members and guests are encouraged to hear this talk.

### BRASEL TO SPEAK TO JGS

The December meeting of the Jackson Geophysical Society will be held the 17th of December at the Kings Inn in Maywood Mart, I-55 North. Mr. S. D. Brasel, with Atlantic Richfield Research of Dallas, Texas, will present a paper entitled "Design of Seismic Techniques."

An invitation is extended to all interested MGS members. A social hour will be held at 5:30 P.M. and dinner will be served at 6:30 P.M.

### SEISMIC HYDROCARBON DETECTION SEMINAR

The Jackson Geophysical Society and Mississippi Geological Society are sponsoring a Seismic Hydrocarbon Detection Seminar (Bright Spot, Hot Spot, Dim Spot, etc). Tentative date is the afternoon and evening of January 23, 1974. A registration fee of \$7.50 will include the cocktail hour and evening meal.

Six speakers will present their versions of Hydrocarbon detection methods using seismic methods.

This seminar should be of interest to all explorationists and, also, to students. Donald L. Smith and Gene Taylor are Co-Chairmen of the Seminar.

\*\*\*\*\*

*One geologist asked another geologist, "How's your wife?" to which the other replied, "Compared to what?"*

### THE NORTHERN GULF BASIN PALEOZOIC FRONTIER

R. D. Woods and J. W. Addington  
Exxon Company, U. S. A.

Prior to drilling in 1940 of the Union-1A Tensas Delta, Morehouse Parish, Louisiana, it was widely believed that only complexly structured Paleozoic-Precambrian metasediments and metamorphics would be found below Mesozoic in the Gulf Basin. Subsequently, possibly 6000 feet of Middle to Lower Paleozoic sediments were encountered below Mesozoic in the southeastern states, principally in northern Florida. Possibly 10,000 feet of Mississippian to Permian sediments have been drilled in the central part of the northern Gulf Basin, in an area centering in North Louisiana - South Arkansas. Wells within the Gulf Basin in Central America and Mexico have also encountered Upper Paleozoic sediments. Although nothing of commercial significance has been found, potential sandstone and carbonate reservoirs have been seen, marine sections that could source hydrocarbons noted, and a variety of structures revealed by limited geophysical surveys. Potential Desmoinesian and Wolfcampian carbonate trends are suggested paralleling the buried Ouachita foldbelt which forms the structural rim of the northern Gulf Basin. Fracture porosity on old structural highs out in the basin may also offer potential for gas. In size the very sparsely drilled potential area approximates the area of Arkansas and Louisiana combined.

\*\*\*\*\*

### MISSISSIPPI GEOLOGICAL SOCIETY CALENDAR

- Nov. 30/Dec. 1 Alabama Geological Society, Field Trip: Talladega Metamorphic Front. (T. J. Carrington, Dept. of Geology, Auburn University, Auburn, Ala., 36830)
- Dec. 11 MGS Woods talk - Primose Northgate  
Social Hour 5:30 P.M. - Dinner 6:30 P.M.
- Dec. 11 Petroleum Auxillary - Sherry Party  
Kerry Briggs Home  
5452 River Thames  
3 - 6 P.M.
- Dec. 17 JGS Brasel talk - Kings Inn  
Social Hour 5:30 P.M. - Dinner 6:30 P.M.

FOR RESERVATIONS TO THE DEC. 11 MEETING, CALL T. C. RADER'S OFFICE BY NOON MONDAY, DEC. 10. PHONE 948-4128

\*\*\*\*\*

### SPONSORS FOR DECEMBER MEETING

FLORIDA GAS EXPLORATION  
LONE STAR PRODUCING CO.



## MISSISSIPPI GEOLOGICAL SOCIETY

### OFFICERS

Larry Walter	President	Consultant
W. E. (Gene) Taylor	1st Vice President	Consultant
Harry E. Fritz	2nd Vice President	Gulf Oil Co.
Elwood M. Ruhl	Secretary	Florida Gas Explor. Co.
John D. Myers	Treasurer	Placid Oil Co.

### REPRESENTATIVES

Stewart W. Welch	AAPG House of Delegates	Consultant
Howard Samsel	AAPG House of Delegates	Union Oil of Calif.
Frank Murrell	GCAGS	Ashland Oil Co.
Jerry Zoble	GCAGS	Consultant

### NEWS BULLETIN STAFF

Sarah Childress	Editor	Miss. Geological Survey
John McCarty	Assistant Editor	Miss. Geological Survey
Paul Gribas	Advertising Mgr.	Shenandoah Oil Co.
John Richart	Personal News	Union Oil of Calif.
Jimmy Walker	Statistics	Amoco Production Co.

PRINTED IN JACKSON, MISSISSIPPI

## GUEST EDITORIAL

### *LET THE BASTARDS FREEZE IN THE DARK*

A combination of environmental concerns and energy shortages is fostering widespread beggar-your-neighbor attitudes. Everyone wants cheap, unlimited energy, but all are prepared to fight tooth and nail to protect the environment and to prevent the location of energy facilities in their vicinity. It so happens that we are going to have neither cheap energy nor a perfect environment. Moreover, if we do not learn how to think nationally rather than parochially and to balance energy needs against environmental concerns, we are headed for trouble. Likely candidates for experiencing miseries are the people of the northern and eastern states. They have enjoyed cheap hydrocarbons from Texas, Louisiana, and Oklahoma. These supplies seemed to be guaranteed, but two developments have cast doubt on the security of supplies, particularly of natural gas. One is depletion of reserves. The other is a threat of indefinite dimensions. The southern states have awakened to the fact that they face future shortages and are looking for means of reserving their hydrocarbons for themselves. Bumper stickers can be seen in Texas, Louisiana, and Oklahoma with the motto, "Let the Bastards Freeze in the Dark."

Some Southerners were shocked recently by news from San Antonio. An electric power plant there will be fueled not by Texas oil or gas but by coal, probably from Colorado. Louisiana, the principal supplier of natural gas to the eastern states, cannot expand industry as it would like because its gas is already committed. Moreover, some of its citizens will lose their jobs this winter because interruptible supplies previously available to Louisiana industry will be going north. Of the large curtailments of natural gas this winter, nearly half will be in the Gulf Coast region. Small wonder that the Governors of Louisiana, Texas, Mississippi, and Oklahoma have joined in threatening to use police power if necessary to preserve their states' fuel supplies.

Governor Edwin Edwards of Louisiana recently pointed out that people in other states are content to have oil gas wells drilled off the Gulf Coast and to have refineries running in his state and pipelines criss-crossing its terrain. "But these states don't want any of that activity in their own backyards." The governor went on to say, "We're not going to be forced to continue operating our refineries and drilling new wells to deplete our resources in Louisiana to benefit the rest of the country."

The governor has a point. When Louisiana's resources are exhausted, who will furnish his people hydrocarbons, and at what cost? The governor was also on target in criticizing the attitude of the Atlantic Coast states toward exploration of their offshore resources. To the east on the continental shelf are thick sedimentary layers with substantial potential for oil and gas. Not a single exploratory hole has been drilled.

however, and when the possibility of such exploration was mentioned about a year ago, there was immediate, strong opposition. Even if exploratory wells could be drilled within the next year, it would be 1980 before natural gas would be flowing into homes. But events on the energy front have been moving with a time scale of weeks rather than years. It is not clear that the southern governors can curtail northern supplies of gas soon, but they will be under increasing pressure to do so.

Given resolute action and national cooperation, we can make it through the coming crisis without suffering. But a continuation of present energy consumption patterns, coupled with the trend toward parochial self-interest, can only lead to divisive tensions and some freezing in the dark. — Philip H. Abelson

Reprinted from Science, 16 November 1973, Vol. 182, No. 4113, by verbal permission of Ms. Grace Finger, AAAS.

## CLAY MINERALOGY TO BE TAUGHT AT USM

The Department of Geology at the University of Southern Mississippi will offer a graduate level course in Clay Mineralogy Spring Quarter (March - May 1974). Dr. David Patrick, a clay minerals specialist for the U. S. Army Corps of Engineers, Waterways Experiment Station, Vicksburg, will be the instructor.

The course will meet for one evening lecture per week (Friday) and one morning lab per week (Saturday). This schedule makes the course available to people from industry and related sciences. Arrangements can be made to spend the night in a dormitory for \$2 a night.

### Purpose

The intent of this course is to provide graduate engineers and scientists with a basic understanding of the nature and properties of argillaceous materials. Included would be clay minerals, "clays", and "clay" rocks. Pertinent laboratory techniques will be discussed and evaluated. Although certain aspects, such as structure and clay-water systems, will be treated in detail, other areas, such as soil formation, origin of clays, and clay "environments", will be more general in nature, thus permitting a broad overview of the subject. The properties of "clays" will be related to laboratory testing and to field performance.

- A. Introduction
  - 1. Concepts of Mineralogy
  - 2. Classification of Silicates
  - 3. Bonding and Crystal Chemistry
- B. Structure and Chemistry of Clay Minerals
  - 1. Components
  - 2. Arrangement and Bonding
  - 3. Ionic Substitution
  - 4. Classification
  - 5. Properties
- C. Identification Techniques
  - 1. Petrography
  - 2. X-Ray Diffraction
  - 3. DTA
  - 4. SEM
- D. Clay-Water Systems
  - 1. Clay Suspensions
  - 2. Stability Theory
  - 3. Fabrics
  - 4. Ion Exchange
- E. Origin of Clays and Soil Formation
  - 1. Soil Development and Weathering
  - 2. Soil Classifications and Geography
  - 3. "Clay" in the Profile
  - 4. Clay Environments

con't on page 3



**F. Clay Minerals and Engineering Applications**

1. "Bricks" and Ceramics
2. ~~Electricity and Mineralogy~~

Clay mineralogy, 1968, by R. E. Grim

If you would be interested in taking this course, or if you would like further information contact:

Dr. Dan A. Sundeen  
Box 196, Southern Station  
Hattiesburg, Mississippi 39401  
601-266-7196

**aapg news-**

**MISSISSIPPI GEOLOGISTS TO  
AAPG POSTS**

The American Association of Petroleum Geologists has named the following Mississippi area geologists to posts as committeemen for the 1973-74 fiscal year, President Daniel A. Busch of Tulsa announced.

Dr. Busch said that the following list consists of both elective and appointive offices. He emphasized that the volunteer services of members at the local level are essential to carry out the Association's many and varied programs.

The AAPG is a professional society with members in all 50 states and 80 foreign countries. It is the largest geological society in the world and is headquartered in Tulsa, Okla.

**MISSISSIPPI**

Jackson: Robert D. Menefee, Committee on Statistics of Drilling; Howard Samsel, House of Delegates; Stewart W. Welch, House of Delegates.

Natchez: Gordon W. Gulmon, Public Information Committee.

State College: Troy J. Laswell, Academic Advisory Committee.

**ARTIC PUBLICATION**

The Artic regions of the world must be producing 20 to 25 million barrels of oil per day by 1990 to meet world energy requirements, according to one of the authors of "Arctic Geology", recently published by The American Association of Petroleum Geologists. The book treats the scientific, economic, environmental, and political problems which must be solved to met this goal in a comprehensive suite of 70 papers, including 24 by Russian scientists covering Alaska, Canada, Siberia.

**SUPER SEARCH FOR ENERGY  
-- CONVENTION THEME**

John S. Runge, President of the Rocky Mountain Section of the AAPG, recently announced that Skip Curry, Casper Consultant, has accepted general chairmanship of the 1974 AAPG-SEPM Rocky Mountain Section Meeting.

The meeting will be held in Casper on June 9, 10, and 11, and will be hosted by the Wyoming Geological Association. Curry has subsequently appointed the following people as Chairmen of the listed committees:

Curry has subsequently appointed the following people as Chairmen of the listed committees:

Technical Program - AAPG Co-Chairmen	. . . . .	.235-2511
	. . . . .	.235-5783
Program-Chairman - SEPM	. . . . .	.892-0263
Technicak Services	. . . . .	.234-4401
Exhibits	. . . . .	.235-5783
Field Trips	. . . . .	.237-9339
Ladies Entertainment	. . . . .	.235-5408
Entertainment	. . . . .	.234-8341
Registration	. . . . .	.265-5550
Publicity	. . . . .	.234-5827

- Herbert D. Waterman (Marathon) Robert W. Ganser (Gulf)
- Thomas R. Fisher (Cities Service) Denver... (303)
- Jim W. Sojourner (Independent)
- James J. Jamieson (Gulf)
- John R. Kerns (Consultant)
- Edna Odell (Geo Wives)
- John J. Pendry (Consultant)
- Whitney A. Bradley (USGS)
- W. W. Stewart (Consultant)

For additional information, write or phone: W. H. "Skip" Curry III, General Chairman, P. O. Box 3001, Casper, Wyoming 82601, (307) 234-6205.

**MISSISSIPPI MUSEUM OF  
NATURAL SCIENCE**

Something every Mississippian should take an interest in and be proud of is the Mississippi Museum of Natural Science. Formerly known as The Mississippi Wildlife Museum, the agency has expanded to include all the natural sciences of the state. A new two story building has been erected to house the museum, with exhibits on the first floor and offices on the second floor. The new, modern building is three times larger than the old wooden building the museum formerly occupied, and is located on North Jefferson Street, directly behind the Old Capitol Building.

All the exhibits are of things which are native to Mississippi and include wildlife, which is shown in its natural habitat, plants, and, especially interesting to geologists, rocks and minerals of the state.

In addition to permanent displays, there are fifty-one changable exhibits which are kept on a rotating basis so as to keep continuing new displays for the public to see. One of these temporary exhibits was put in by the Mississippi Geological Survey and the Mississippi Gem and Mineral Society.

Museum hours are 8:00 A.M. to 4:30 P.M. six days a week, Monday through Saturday. Groups interested in a guided tour and a lecture should make an appointment by calling Mr. Shropshire, Assistant Director, at 354-7303.

**GCAGS DISPLAY**

Keith Patton, of Gulf Oil Company, was in charge of our display booth at the Gulf Coast Association of Geological Societies in Houston, Texas, October 24. All our publications were on display, including two of the nine Jurassic cross-sections which have been completed. By January all nine cross-sections should be complete, back from the printer, and ready for sale. The two which were shown in Houston will not be for sale until the entire set is completed.



# progress-

## Mississippi Completions - October 1973

Exploratory	OIL	GAS	DRY
Eocene	0	0	10
UK	0	1	0
LK	0	0	1
Jurassic	0	0	3
Paleozoic	0	0	2

Development	OIL	GAS	DRY
Eocene	7	0	1
UK	1	0	3
LK	1	0	1
Jurassic	1	0	1
Paleozoic	0	1	0

### New Field Discovery

Hurricane Creek Field  
10/15/73 Gas

Systems Fuels Harris Branch, Hewett & Wafer No. 1 McKinzie 34-4 Sec. 34-2N-13E, Marion Co. IP Flowed 1420 MCF gas/day + 24 barrels condensate/million 964 choke FTP 3200 GDR 59000-1  
Gravity 54o  
Perfs 9530-36  
From Lower Tuscaloosa - Good Friday

\*\*\*\*\*

*Will Rogers said that a scientist is a man who can find out anything, and nobody has any way of proving whether he found it out or not.*

\*\*\*\*\*

<b>TRIAD OIL &amp; GAS CO., INC.</b> Oil Property Management 1290 Petroleum Bldg. Jackson, Mississippi 355-9693	
<b>ROBERT L. THOMSEN</b> Jackson, Mississippi	
<b>JAMES B. FURRH, JR.</b> Oil Producer 1236 Capital Towers Jackson, Mississippi	
<b>L. WICK CARY</b> Consulting Geophysicist Room 932 National Bank of Commerce Bldg. Box 50391 New Orleans, La.	
<b>MARVIN L. OXLEY</b> Consulting Geologist 213 South Lamar Street Jackson, Miss. 39201 601-355-1841 601-956-6446	
<b>ROBERT WOMACK, JR.</b> Consulting Geologist 1509 Standard Life Bldg. Phone 353-4650 Jackson, Miss. 39201	
<b>SOUTHERN NATURAL GAS CO.</b> P. O. Box 1513 Donald R. Scherer, Dist. Geologist Houston, Texas 622-7270	

M. D. MYERS  
Consulting Geologist  
P. O. Box 10553 Jackson, Mississippi 39209 Phone 355-3536

### SCHLUMBERGER WELL SERVICES

Jackson, Mississippi Phone 352-8589

### SEISMOGRAPH SERVICE CORP.

A Subsidiary of Raytheon Corp.

Don Underwood, Mgr. Gus Fiongos, Mgr. Data Proc.  
Jackson, Mississippi Phone 982-9120

HERBERT J. FERBER  
Consulting Geophysicist

5456 Hartsdale Drive Jackson, Mississippi 956-4666

### GEOMAP COMPANY

MAPPING SERVICES  
BASE MAPS • REFERENCE MAPS

DALLAS HOUSTON MIDLAND DENVER

MORTON M. PHILLIPS

Petroleum Geologist  
902-G Milner Bldg. - Ph. 355-3364 Jackson, Miss. 39201

FRANK HOWSON ASSOCIATES

5531 Dyer St., Suite 110 Dallas, Texas 75206  
214 - 361-8467

CLAUDE B. HAMMILL

Oil Operator  
2306 First Nat'l. Bank Bldg. Houston, Tex. 77002

GERMANY INVESTMENT CO.

Norman G. Germany Dallas, Texas E. Wilson Germany Natchez, Mississippi



# NEWS

## BULLETIN

mississippi geological society

XXI  
VOL. ~~XXI~~, NO. 7, MARCH, 1974



### AAPG Distinguished Lecturer To Speak March 19

#### MARK E. HENNES TO SPEAK TO MGS

The March meeting of the Mississippi Geological Society will be held Tuesday, March 19 1974, at Primos Northgate, North State Street, Jackson. Guest speaker for the evening will be Mr. Mark E.

Hennes, who is on the Distinguished Lecture Tour sponsored by the American Association of Petroleum Geologists. Mr. Hennes will present a paper entitled "Depositional Anticlines of Deep Environments - Past Success and Future Exploration." Social hour will be held at 5:30 p.m., and dinner will be served at 6:30 p.m.

Mark E. Hennes was born in Los Angeles, California, on September 24, 1931. He was educated at the University of California at Los Angeles, where he received a B. A. degree in Geology in 1953.



His professional experience includes work on the surface of central California with Oceanic Oil Company in 1953 and 1954. He was in military service from 1954 to 1956.

Upon returning to civilian life, Mr. Hennes was employed by the British - American Oil Producing Company in exploration and development assignments on the Gulf Coast and in the Rocky Mountains. He was stationed in New Orleans, Casper, Billings and Denver during the period 1956 to 1966.

He joined Gulf Oil Corporation in New Orleans to work in Gulf Coast exploration from 1966 to 1970.

At present Mr. Hennes is a Supervising Geologist with Core Laboratories, Inc., Geosciences Section, Dallas, where he performs international geologic consulting services.

He is a member of AAPG, Society of Petroleum Engineers of AIME, and the Dallas Geological Society.

All MGS members and guests are encouraged to attend to hear this talk.

#### ON LITTER

The Gulf Coast Research Lab states that Researchers at Pennsylvania State University theorize that a tin can discarded today would be completely broken down by the year 2073. Aluminum cans would be degraded by 2113 and plastic wrappers by 2200. A glass bottle might last until the year 1,001,972.

#### DEPOSITIONAL ANTICLINES OF DEEP ENVIRONMENTS — PAST SUCCESS AND FUTURE EXPLORATION

MARK E. HENNES

#### ABSTRACT

As the energy quest probes deeper into the oceanic environment, enormous depositional anticlines formed by deep current action are being documented, and certain of these with favorable rock properties beckon to the explorationist.

Wind-driven surface currents, such as the Gulf Stream, can shape these anticlines at the outer edges of detrital sedimentation where such high-velocity currents sweep the bases of continental slopes. Similarly, the "bottom" currents which are moving at slower velocities deeper on the continental rises will form varied anticlinal profiles characteristic of particular bottom conditions. Redistributed terrigenous materials which in great part compose these anticlines are carried into both current systems by intermittent gravity sliding and turbidity currents.

A striking example of wind-driven current deposition occurs in the Florida Strait where calcareous sands from the Florida reef vicinity are swept along a trough by the Gulf Stream, then onto a broad anticlinal rise. Examples typifying "bottom" current anticlines are numerous in the North Atlantic, and deep-water coring programs have partly revealed their sedimentary sequences.

A wind-driven current origin can plausibly explain the Poza Rica trend in Mexico. As the Golden Lane Reef contributed its Tamabra talus downslope into swift currents of the Chicontepec foredeep, anticlines were shaped at the base of the slope. Similar origins are suggested for other examples in the geologic record.

Significant reserves in anticlines formed by current action will be found beyond the reefs and laterally away from the deltas in the deep environment where the subtle character of these features must come to be recognized. Reservoirs such as Poza Rica attest to the excellent rock properties and trap conditions which can be realized in an inspired search for such targets.

#### MISSISSIPPI GEOLOGICAL SOCIETY CALENDAR

- |             |  |
|-------------|--|
| March 19    | MGS Hennes Talk - Primos Northgate<br>Social Hour 5:30 p.m. - Dinner 6:30 p.m.             |
| March 21-22 | Mississippi Academy of Sciences Annual Meeting<br>Biloxi, Mississippi - Sheraton Motor Inn |
| April 1-3   | AAPG-SEPM Annual Convention<br>San Antonio, Texas  |
| April 2-6   | Southeastern Sections GSA Annual Meeting<br>Atlanta, Georgia                               |



## MISSISSIPPI GEOLOGICAL SOCIETY

### OFFICERS

Larry Walter	President	Consultant
W. E. (Gene) Taylor	1st Vice President	Consultant
Harry E. Frltz	2nd Vice President	Gulf Oil Co.
Elwood M. Ruhl	Secretary	Florida Gas Explor. Co.
John D. Myers	Treasurer	Placid Oil Co.

### REPRESENTATIVES

Stewart W. Welch	AAPG House of Delegates	Consultant
Howard Samsel	AAPG House of Delegates	Union Oil of Calif.
Frank Murrell	GCAGS	Ashland Oil Co.
Jerry Zoble	GCAGS	Consultant

### NEWS BULLETIN STAFF

Sarah Childress	Editor	Miss. Geological Survey
John McCarty	Assistant Editor	Miss. Geological Survey
Paul Gribas	Advertising Mgr.	Shenandoah Oil Co.
John Richart	Personal News	Union Oil of Calif.
Jimmy Walker	Statistics	Amoco Production Co.

PRINTED IN JACKSON, MISSISSIPPI

## GCAGS SILVER ANNIVERSARY CONVENTION TO BE HELD IN JACKSON

As most of you know, the GCAGS Annual Convention will be held in Jackson in October, 1975. We have over 300 members in MGS now, and it would certainly prove embarrassing if only a few of us submitted technical papers for this meeting.

We are a soundly managed, motivated, and thoroughly professional body. Our membership includes strong leaders and senior spokesmen in executive positions, highly trained college professors and their students, and work-a-day geologists who, though perhaps unsung now, are the continuum from our young geologists with little experience - but many fresh ideas and approaches - to tomorrow's leadership.

With such a wealth of talent to draw from, we therefore solicit your precisely pungent or relevant or strictly scientific, geologic papers.

Let's work together to make this convention the biggest and best ever.

Program Chairman for the convention is Emil Monsour with Lone Star, Jackson.

## MISSISSIPPI GEOLOGICAL SURVEY BULLETIN 117 TO BE RELEASED

The Mississippi Geological Survey announces the publication of Bulletin 117, Wayne County Geology and Mineral Resources, by James H. May. The report includes a water resources section by Wilbur T. Baughman and John E. McCarty and a clay section by William B. Hall and Rollin C. Glenn.

Bulletin 117 is concerned with the surface and near-surface geology of Wayne County, Mississippi. It is one of a series of county bulletins that deals with the counties that are located along the outcrop of the Oligocene age, Vicksburg Group. The stratigraphic units exposed in Wayne County are part of the Eocene, Oligocene and Miocene Series of the Tertiary; and the Pleistocene and Recent Series of the Quaternary System.

The oil and gas industry is the most important mineral industry in Wayne County and is discussed along with the structures from which the various fields produce. Developed and undeveloped mineral resources such as bentonite, limestone and marl, ceramic clay, lightweight aggregate clay, siderite, sand and gravel, drilling mud and

lignite are discussed and located. The possibility of geothermal energy sources in Wayne County is brought to the readers attention. Surface and sub-surface waters are described in detail.

This Bulletin also takes into consideration the academic aspect of geology in Wayne County. Cores and electrical logs taken near the type localities of various formations offer informative data. Many fossils are identified and the locations of fossil collecting areas are given. Descriptions of caves in Wayne County may be interesting to geologists and spelunkers.

Bulletin 117 should be helpful in the economic development of the available minerals in Wayne County. It should also add to the storehouse of accumulated geologic knowledge which influences everyone from the professional geologist to the local farmers.

## BUFFALO OIL?

Following is an article which was printed in the "Washington State Geologic Newsletter" which was thought to be very amusing and is passed on to you in its entirety.

"Occasionally, the division gets a letter that is especially enjoyed by us. Here is one from a geologist, whom we all know well, and who is now District Exploration Manager for a large oil Company. He attached the letter below that he had received from an individual interested in oil. The spelling remains the same, because it is part of its charm.

Dear Sir:

I am sending you a volcano blows top-are you going to let this oil go to wast? There is a mountain in Mexaco called Partuction. For 7 years it worked, until the oil was gone. They have drilled all over Pugit Sound in Wash. for oil. The brainless folls could see Mount Raineer, there could be no oil, I stoped in at Olympa and the geologist there said 3,000 bufflo fell over a cliff and that made the oil. I told him he was crazy. I went to the University. The teacher there said they just teach what they learned from books. So you have book learned. Geologist all he can do is guess. If you want to save this oil, I can tell you where to drill. The oil is going to wast every day.

Yours,

The geologist's response to us is as follows:

Dear Ted:

It is evident from the attached letter that your Department is responsible for putting out false and misleading information on the origin of hydrocarbons. As Oil and Gas Supervisor, it should be your responsibility to keep your people informed on the currently accepted theories in order not to confuse the public, which has a tough enough time understanding our business anyway.

The author of the letter states that he was told that 3,000 buffalo fell over a cliff and that was what made the oil. Anyone up on the literature knows it wasn't 3,000 buffalo but 3,500 dinosaurs - and, they didn't just fall, they were pushed. No wonder he thought you were crazy.

If he comes in again, you might try and find out where he thinks we ought to drill. With the energy crisis and all, we hate to see all that oil going to wast (sic).

Very truly yours,

We are unable to locate anyone on our staff who will admit to the 3,000 buffalo story. Our biostratigrapher says that buffalo microfossils are rare indeed; our geothermal expert is hastily looking around for the volcano that is blowing its top; our draftsman is trying to locate that high cliff on a map; the Humane Society is searching for the pusher of the dinosaurs, and the university will have to speak for itself on the book learning."

## Personal

Charles O'Melveny, graduate of New Mexico Technological University, has accepted a position with Gulf Oil in Jackson as a geophysicist.

Richard Lewis has accepted a job with Reading and Bates in Tulsa, Oklahoma, effective March 1.



**SEG Distinguished Lecturer  
To Speak To JGS**

**LETTER OF INTEREST**

November 30, 1973

Mr. A. E. Pallister, who is on the Distinguished Lecture Tour sponsored by SEG, is tentatively scheduled to speak to the JGS at the March meeting. Mr. Pallister is Vice-President and Director of Kenting Limited of Calgary, Canada. He is scheduled to present a paper entitled "The Canadian Arctic - A Sleeping Giant."

Further information about this meeting will be forthcoming.

The Honorable Richard Nixon,  
President of the United States,  
Washington, D. C.

Honorable Carl Albert,  
Speaker of the House, and  
U. S. Senate Pro-tem,  
Washington, D. C.

**Progress**

**by Jim McMullen - Petroleum Information  
Mississippi Completions - January 1974**

Re: Our Energy Crisis

Exploratory	Oil	Gas	Dry
Eocene	0	0	15
UK	0	0	2
LK	0	0	4
Jurassic	0	0	3
Paleozoic	0	0	3
Development	Oil	Gas	Dry
Eocene	0	0	3
UK	0	0	1
LK	0	0	0
Jurassic	1	0	0
Paleozoic	0	1	0

No New Field Discoveries

**OKLAHOMA GEOLOGICAL SURVEY**

Announcing a 1-day symposium on  
"STRATIFORM COPPER DEPOSITS OF THE  
MID-CONTINENT REGION"

Sponsored by  
South-Central Section of The Geological Society  
of America

at  
Oklahoma State University, Stillwater, Oklahoma  
Friday, March 8, 1974

A timely symposium is planned on copper occurrences in Permian and Triassic sedimentary rocks of Oklahoma, Texas, New Mexico, and Kansas. Mineralization consists mainly of chalcocite and malachite occurring in shales and sandstones that commonly are 6 to 30 inches thick; the grade of most deposits is typically 1 to 3 percent copper. Several of the deposits (in Oklahoma and New Mexico) are now being mined, and others are under development or being explored. Below is the program for the copper symposium.

The 1-day copper symposium will be part of a 2-day GSA program (March 7-8) that includes other sessions on Applied Geology in 1984, Geochemistry, Remote Sensing, Sedimentology, Sandstones and Limestones, and other topics. For information on registration and housing, contact: Alex R. Ross, Chairman of Local Arrangements Committee, Department of Geology, Oklahoma State University, Stillwater, Oklahoma 74074, or refer to the forthcoming GSA Program With Abstracts for South-Central Section meeting.

For additional information on the stratiform-copper symposium contact either of the co-chairmen:

Kenneth S. Johnson  
Oklahoma Geological Survey  
University of Oklahoma  
Norman, Oklahoma 73069  
(405/325-6541 or 325-3031)

Zuhair Al-Shaieb  
Department of Geology  
Oklahoma State University  
Stillwater, Oklahoma 74074  
(405/372-6211, ext. 597-

Gentlemen:

Please allow me this privilege as a medium to address you collectively and individually, wherein individuality applies. I will try to make my remarks brief and candid in order not to unnecessarily burden you with voluminous jargon, as I know most of you in Congress have been burdened down all this session with other weighty matters like Watergate, etc., so that you couldn't see the forest for the trees.

Now, the salient fact is that there exists an energy shortage of major proportions, such as oil and gas. Let me re-phrase that statement and put it in its proper perspective, "a shortage of oil and gas discovered and ready to go on stream." We oil and gas producers feel confident that ample oil and gas reserves await discovery and will be discovered if we are assured of ample compensation for our efforts.

We have produced and furnished a sea of oil in three major wars - WWI, WWII, then Korean, all at a price far below that which would take to replace same. Then the Southeast Asia, Viet Nam War, one of the longest and costliest ever in human lives, equipment and natural resources, and in the middle of that war, in 1968, 1970, 1971, 1972, the long drainage on our energy resources for four wars plus inflation of everything except oil and gas, began to hamper exploration, as no appreciable price increase was allowed or would be tolerated at that time.

We pleaded with Congress and the Ways and Means Committee, with testimony and documented facts, the plight of the domestic oil and gas industry and the inevitable energy shortage that would occur unless there was had a more favorable attitude by Congress to the oil and gas industry. In spite of all this, as late as 1970, enough of you gentlemen saw fit to vote for and did take away 5 per cent of our historic 27-1/2 per cent statutory depletion, with the warning that it would eventually be cut to 15-1/2 per cent, and that, gentlemen, accelerated the present energy crisis, because this action dried up the capital necessary for research and the enormous expenses of drilling deeper and more costlier wells.

You were furnished with information of this trend and evidence of the approaching shortage and ultimate crisis from 1952 to 1972, by such well know authorities as U. S. Bureau of Mines, American Petroleum Institute, American Gas Association, Independent Producers Association of America, World Oil and Petroleum Information. You were told in 1972 of the 28,755 wells drilled in 1972 which was just 5 per cent more than the 28-year low record in 1971, but 1/3 less than the prior 10 year average, and 1/2 as many as 15 years ago, and 50 per cent under the 15-year ago average, exclusive of the Alaskan Prud Ho Bay discovery which had just been made and was not available due to the lack of facilities.

Yes, the cause of the terrific reduction in U. S. Drilling and exploring for new reserves of oil and gas is brought about by the destruction of the incentive to invest in drilling operations due to the failure of the oil and gas price to keep pace with the tremendous increased costs. Facts were presented to Congress, Ways and Means Committee and F. P. C. and other Governmental Agencies that producers were receiving just a fraction over 8 cents per gallon for crude oil in both 1971 and 1972, and 17% more than prior 10-year average, and less than 10% over a 15-year ago average. Natural gas wellhead price in 1972 was just 26 per cent above the 10-year prior



period in contracts. The cost of drilling and equipping oil and gas wells rose 61 per cent during this same period.

Yes, in spite of all our pleas for a substantial higher price for our crude oil and natural gas, F.P.C. denied, and then Congress took away 5 per cent of our 27-1/2 per cent depletion that has been historically allowed since 1929, and has been the very backbone and super structure of a healthy oil and gas industry in America. Need I say more in defense of the oil and gas producers of America in order to keep the records clear?

Permit me to suggest to Congress, and particularly to those in Congress who voted to reduce or take away depletion cost from the Oil and Gas Industry, that it might be a good idea to use this on the Arabs at this time. Just appoint a Committee to go over there and meet the 16 heads of the Oil Embargo against the U. S. and others. Tell them that at the time you took away the 5 per cent of the depletion allowance and also denied and prevented any higher price to the domestic oil and gas in the U. S. by reason of your action.

Oh, yes, in closing my remarks, I drop a thought to the President also, and that is that in the matter of the Big Wheat deal he made with Russia for the U. S. wheat, that if he had used the same dexterity and adroitness that he used in the famous Kitchen debate with Khrushchev he might have traded this wheat for oil, which would have amounted to at least 150,000,000 bbls.

Gentlemen, we old time wildcatters stand ready for action and we assure you we shall overcome this crisis if you gentlemen will provide the incentive, so "let's head-em up and move-em out." We can deliver the goods if allowed to.

Yours very truly,

/s/ B. B. Orr

Producer and Wildcatter  
P. O. Box 1608  
Longview, Texas 75801

Reprint Shreveport Geological Society Newsletter

<b>ROBERT L. THOMSEN</b> Jackson, Mississippi	
1236 Capital Towers	Oil Producer Jackson, Mississippi
Room 932 National Bank of Commerce Bldg.	Consulting Geophysicist Box 50391 New Orleans, La.
<b>MARVIN L. OXLEY</b> Consulting Geologist	
213 South Lamar Street Jackson, Miss. 39201	601-355-1841 601-956-6446
<b>ROBERT WOMACK, JR.</b> Consulting Geologist	
1509 Standard Life Bldg.	Jackson, Miss. 39201 Phone 353-4650
<b>SOUTHERN NATURAL GAS CO.</b>	
P. O. Box 1513 Donald R. Scherer, Dist. Geologist	Houston, Texas 622-7270

<b>TRIAD OIL &amp; GAS CO., INC.</b> Oil Property Management 1290 Petroleum Bldg. Jackson, Mississippi		355-9693
<b>FOREST OIL CORPORATION</b> 1535 One Shell Square New Orleans, La. 70139		504-524-5849
<b>M. D. MYERS</b> Consulting Geologist P. O. Box 10553 Jackson, Mississippi 39209		Phone 355-3536
<b>SCHLUMBERGER WELL SERVICES</b>		
Jackson, Mississippi		Phone 352-8589
<b>SEISMOGRAPH SERVICE CORP.</b> A Subsidiary of Raytheon Corp.		
Don Underwood, Mgr. Gus Fiongos, Mgr. Data Proc. Jackson, Mississippi		Phone 982-9120
<b>HERBERT J. FERBER</b> Consulting Geophysicist 5456 Hartsdale Drive Jackson, Mississippi		956-4666
 <b>GEOMAP COMPANY</b> MAPPING SERVICES BASE MAPS • REFERENCE MAPS		
DALLAS	HOUSTON	MIDLAND DENVER
<b>MORTON M. PHILLIPS</b> Petroleum Geologist 902-G Milner Bldg. - Ph. 355-3364		Jackson, Miss. 39201
<b>FRANK HOWSON ASSOCIATES</b> 5531 Dyer St., Suite 110 214 - 361-8467		Dallas, Texas 75206
<b>CLAUDE B. HAMMILL</b> Oil Operator 2306 First Nat'l. Bank Bldg. Houston, Tex. 77002		
<b>GERMANY INVESTMENT CO.</b> Norman G. Germany Dallas, Texas		E. Wilson Germany Natchez, Mississippi
<b>OIL WELL LOGGING, INC.</b> P. O. Box 16039 - Jackson, Miss.		354-3642
<b>CRUDE OIL PURCHASING, INC.</b>  (New Miss. Crude Oil Buyers)		

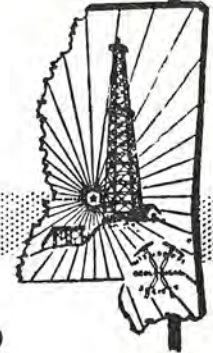


# NEWS

# BULLETIN

mississippi geological society

VOL. ~~XXXIII~~<sup>XXI</sup>, NO. 8, APRIL, 1974



## BLACK WARRIOR BASIN TOPIC APRIL 9

STEWART WELCH TO SPEAK TO MGS

DEPOSITION of the CARTER-SANDERS ZONE  
of the  
BLACK WARRIOR BASIN  
MISSISSIPPI and ALABAMA

The April meeting of the Mississippi Geological Society will be held Tuesday, April 9, 1974, at Primos Northgate, North State Street, Jackson. Guest speaker for the meeting will be Mr. Stewart Welch, consulting geologist, Jackson.

Stewart Welch

Mr. Welch will present a paper entitled, "Deposition of the Carter-Sanders Zone of the Black Warrior Basin, Mississippi and Alabama."



Stewart E. Welch

Mr. Welch has about 12 years of experience in the Black Warrior Basin, first with the United States Geological Survey, then with Shell Oil and now as a consultant. His career started with USGS in 1950 upon graduation from Oklahoma A & M. He stayed with USGS 8 years and then, in 1958, went to work for Shell. Since 1965, he has been associated with W. Fleming Brown as a consultant.

The meeting will begin at 5:30 p.m. with a cocktail hour and dinner will be served at 6:30 p.m.

All MGS members and guests are encouraged to come and hear Mr. Welch.

### MISSISSIPPI GEOLOGICAL SOCIETY CALENDAR

- |           |  |
|-----------|--|
| April 1-3 | AAPG-SEPM Annual Convention San Antonio, Texas                             |
| April 2-6 | Southeastern Sections GSA Annual Meeting Atlanta, Georgia                  |
| April 5   | Oil and Gas Law Seminar - Primos Northgate - 8:00 a.m.                     |
| April 9   | MGS Welch Talk - Primos Northgate Social Hour 5:30 p.m. - Dinner 6:30 p.m. |
| April 10  | JGS Pallister Talk - Kings Inn Social Hour 5:30 p.m. - Dinner 6:30 p.m.    |

For reservations to the April 9 meeting call T. C. Radar's office (948-4128) by noon Monday, April 8.

### ABSTRACT

This presentation is an attempt at providing a better understanding of the deposition of the sediments of the Carter-Sanders zone of Upper Mississippian Age in the Black Warrior Basin of northeastern Mississippi and northwestern Alabama. Sandstones of this zone provide most of the gas production of the Black Warrior Basin - 91% of the total production to January 1, 1974. Thus, in view of the increased interest and drilling activity in the Basin, a better understanding of the nature and pattern of these sand bodies should aid in the overall exploratory effort.

The sediments of the Carter-Sanders zone were of a clastic nature, consisting of carbonaceous muds, silts, and sands. They were transported to the Basin by a major stream from the north which built a series of complex deltas on the shallow north flank of the Basin. The sands were deposited in distributary channels, bar fingers, and delta fringe deposits; and in some cases were reworked into beaches and off-shore bars. The clays and silts were deposited in interdistributary areas and in deeper water off the fronts of the deltas.

This stream and delta system appears to be the same as that recognized by Swann in the Illinois Basin (AAPG Bulletin, 1964). He referred to it as the Michigan River and recognized it as a major stream with its headwaters in eastern Canada which flowed southwestward through the Michigan Basin and into the Illinois Basin. With the use of several thousand electric logs of wells drilled in the Illinois Basin, Swann determined a rhythmic sequence of deltaic and alluvial clastic sediments which alternate with marine shales and limestones. At times when the sea level was static or at a lowered level, deltas prograded across the shallow Illinois Basin and in a few cases across Tennessee and onto the north flank of the Black Warrior Basin. At times of higher or rising sea level, the deltas were transgressed by shallow seas and marine deposition resulted.

It was during a rather marked drop of sea level that the Carter-Sanders sequence was deposited. As the sands of the Carter-Sanders zone and oolitic limestones of the upper Bangor all appear to have been deposited near sea level, and that Carter-Sanders deposition occurred after Bangor deposition, there must have been a lowering of sea level approximately equal to the thickness of the Carter-Sanders zone, or about 400 feet. As sea level gradually rose during Carter-Sanders time, deposition kept pace with the rise and a series of deltas, each building on the preceding one, developed in the Black Warrior Basin. Finally, the delta was completely inundated by the sea and shallow marine conditions transgressed both the Carter-Sanders sediments and the Bangor Platform depositing limestones and shales of the Millerella Zone of the Pennington Formation.



## MISSISSIPPI GEOLOGICAL SOCIETY

### OFFICERS

Larry Walter	President	Consultant
W. E. (Gene) Taylor	1st Vice President	Consultant
Harry E. Fritz	2nd Vice President	Gulf Oil Co.
Elwood M. Ruhl	Secretary	Fla. Gas Explor. Co.
John D. Myers	Treasurer	Placid Oil Co.

### REPRESENTATIVES

Stewart W. Welch	AAPG House of Delegates	Consultant
Howard Samsel	AAPG House of Delegates	Union Oil of Calif.
Frank Murrell	GCAGS	Ashland Oil Co.
Jerry Zoble	GCAGS	Consultant

### NEWS BULLETIN STAFF

Sarah Childress	Editor	Miss. Geological Survey
John McCarty	Assistant Editor	Miss. Geological Survey
Paul Grijbes	Advertising Mgr.	Shenandoah Oil Co.
John Richart	Personal News	Union Oil of Calif.
Jim McMullen	Statistics	Petroleum Information

PRINTED IN JACKSON, MISSISSIPPI

to: Sarah Childress, Editor, Mississippi Geological Society Newsletter -  
3-14-74

Members of the Geological Society:

The Committee on Registration of the Mississippi Section of A.J.P.G., has conducted a survey among the geologists in Mississippi concerning their views on registration of geologists in the State. We received 78 returns from our questionnaire with a vote of 39 for registration and 35 against and 4 no opinion. The A.J.P.G. conducted this survey not because they were pushing registration, but to determine what the feeling was concerning registration. From the results of the questionnaire it seems evident that there are as many against as are for and at this time it would be futile to attempt legislation or to pursue this matter. The A.J.P.G. appreciates the efforts of those who answered the questionnaire and I am sure that this matter will come up again.

William H. Moore, President  
Mississippi Section, A.J.P.G.

### NOTICE:

The Mississippi Geological Survey has an opening on its staff for a Geologist I, starting salary for this position is \$722.00 per month. Inquiries should be made to: Mississippi Geological Survey, P.O. Box 4915, Jackson, Mississippi 39216.

## OIL, GAS SEMINAR SLATED

The Mississippi Association of Petroleum Landmen and the Mississippi Oil and Gas Lawyers Association have announced plans for a one-day Oil and Gas Law Seminar to be held at the Primos Northgate Convention Center on April 5. Registration will commence at 8 a.m.

Papers on various legal topics pertinent to the oil and gas industry will be presented by several prominent attorneys.

Miss Martha Gerald, partner with the firm of Wells, Gerald, Brand, Watters and Cox, of Jackson, will present a discussion on suggested title requirements and suggested procedures and information to satisfy title requirements. Miss Gerald is president-elect of the Hinds County Bar Association, 1973-74, and was chairman of the oil and gas committee of the Mississippi State Bar from 1966 to 1968.

Tom R. Mason, professor of oil and gas law at the University of Mississippi, will present a discussion of the generally recognized implied covenants in oil and gas leases and the recent developments in this area.

He is a graduate of the University of Oklahoma and was in the general practice of law in Oklahoma and Colorado before joining the faculty of the Law School at the University of Mississippi.

Other topics to be discussed at the seminar are: Pitfalls in Record Title Examination in Alabama, Mississippi and Florida; Recent Decisions in Oil and Gas Law; and Environmental Problems and Considerations.

## A. E. PALLISTER TO SPEAK TO JGS

The April meeting of the Jackson Geophysical Society will be held on Wednesday, the tenth of the month. Mr. A. E. Pallister, Distinguished Lecturer of the Society of Exploration Geophysicists, will present a paper entitled, "The Canadian Arctic—A Sleeping Giant."

A. E. (Ernie) Pallister entered the geophysical industry with United Geophysical Co. in 1948. Following a period in California and the Middle East, he returned to Canada and was employed by Century Geophysical Co., Sub-Surface Exploration, Canadian Seaboard Oil Co. and Accurate Exploration Ltd.

In 1962 he established A. E. Pallister Consultants Ltd. which became part of Kenting Ltd. in 1967. Since 1970 he has been Vice President and a Director of Kenting. In addition, he has recently re-established a consulting practice, Pallister Resource Management Ltd., in Calgary. He is a director of the Banff School of Advanced Management, a past President of the Canadian Society of Petroleum Geologists, a member of the Association of Professional Engineers, Geologists and Geophysicists of Alberta, from whom he received a Special Award in 1973 in recognition of an outstanding contribution made to society. He is a member of the Canadian Society of Exploration Geophysicists and was Chairman of the 1973 CSEG national convention in Calgary. He is a member of the SEG and EAEG.

During the past four years, he has served with the Science Council of Canada, Ottawa, to which he was appointed Vice Chairman in 1972.

He has authored numerous articles on reef traps in Alberta and on Arctic exploration.

The meeting will be held at the King's Inn, in Maywood Mart, 1-55 North, Jackson. A social hour will begin at 5:30 p.m., and dinner will be served at 6:30 p.m.

All interested MGS members are welcome to this meeting.

## THE CANADIAN ARCTIC — A SLEEPING GIANT

A. E. Pallister

### ABSTRACT

More than a decade ago projections were made of vast potential oil and gas reservoirs in the Canadian Arctic. Subsequently, geophysics and drilling have confirmed this vision. Today, at a time of international energy shortages and high market prices, it would seem natural that this frontier should arise as a dynamic new source of supply.

The Canadian Arctic is, however, unique in two respects — its physical environment and its socioeconomic environment. Its development is dependent upon crossing many technological and political bridges.

Future exploring, drilling and producing in this Arctic climate presents new opportunities and challenges for imaginative designs. Much new equipment and innovative techniques have been developed and applied — particularly in geophysics where surveys have been conducted on-ice, through-ice and over fragile terrain. New techniques such as submarine surveys and airborne gravimetrics are emerging to reach yet unexplored areas. Revolutionary and costly systems of drilling in deep and ice-infested waters are on the drawing board. Under-ice production systems are yet in the minds of men. Imaginative schemes of product delivery range from mammoth aircraft to nuclear submarines. (Many of the required breakthroughs in technology will be illustrated.)

An equally important challenge is the formation of the social structure and timeframe in which development might take place. I say "might" for in addition to being an emerging source of resources, the Canadian Arctic is seen as an emerging prototype of paced-growth in a conservator society. This is the real "sleeping giant," in a world abruptly recognizing the cost of exponential growth and unrestricted resource depletion.

To bring the publicly-owned treasures of Canada's north to consumers, in parallel with the gaining of an optimum "quality-of-life" for its citizens, is the object of many Canadians. Policies of resource management which will include these wide-ranging intangibles will likely not develop quickly.

Can a formula be developed that takes into account these social concerns, yet provide impetus for continual massive investments by industry in exploration and technological advancements?



SHREVEPORT GEOLOGICAL SOCIETY  
P. O. Box 750  
Shreveport, Louisiana 71162

OUR INVOICE & ORDER BLANK

Order/Invoice to

Your Purchase Order No. \_\_\_\_\_ (Bill \_\_\_\_\_ Check or Cash enclosed \_\_\_\_\_)

PUBLICATIONS

No. Ordered & Shipped	FIELD TRIP GUIDE BOOKS	Price	
		Ea.	Total
_____	Interior Salt Domes and Tertiary Stratigraphy of North Louisiana, 20th Trip, 147 pp. (1960) .....	\$5.50	_____
_____	Cretaceous of Southwest Arkansas and Southeast Oklahoma, 21st Trip, with Selected Field Papers in South Arkansas and North Louisiana, 89 pp. (1961) .....	\$4.00	_____
_____	Comanche Stratigraphy of Fort Worth-Waco-Belton Area, Texas, 23rd Trip, 137 pp. (1969) .....	\$5.50	_____
_____	Southeast Oklahoma-Northeast Texas (Upper & Lower Cretaceous), 24th Trip, 33 pp. (1970) .....	\$2.25	_____
_____	A study of Paleozoic Rocks in Arbuckle and Western Ouachita Mountains of Southern Oklahoma, 26th Trip, 84 pp. (1973) .....	\$7.50	_____
REFERENCE REPORTS ON OIL AND GAS FIELDS AND REGIONAL GEOLOGY OF NORTH LOUISIANA, SOUTH ARKANSAS, MISSISSIPPI AND ALABAMA			
_____	Volume IV, 204 pp. (1958) .....	\$5.50	_____
_____	Volume V, 202 pp. (1963) .....	\$7.50	_____
OTHER PUBLICATIONS			
_____	Geologic Map of Louisiana (blue line print), Scale 1" - 8 miles (1964) .....	\$5.00	_____
_____	Structural and Stratigraphic Cross Sections of North Louisiana and South Arkansas (set of 8) with index Map and Geologic Map of Pre-Upper Cretaceous Surface .....	\$5.50	_____
_____	Compilation of Producing Formations by Fields Covering NE Tex., N. La., S. Ark., Miss. and Ala. (1951) .....	\$2.50	_____
_____	Upper Gulf Coast Correlation Chart Penetration Charts and Reservoir Data Summary of Oil and Gas Fields in South Arkansas and North Louisiana, 11 sheets (1953) .....	\$4.50	_____
_____	Set of Nine (9) Maps and One Cross-Section Depicting the "Regional Stratigraphic Analysis of the Cotton Valley Group of the Upper Gulf Coastal Plain" (1954)s, .....	\$9.50	_____
_____	Oil and Gas Producing Zones in the Wilcox (Eocene) of Central Louisiana, 23 pp. (1961) .....	\$3.50	_____
_____	Photo Directory 1972 - 1973, SGS, ALTLA, ALTGS, SPE .....	\$5.00	_____

PERSONAL

Jerry Callison, Regional Sales Manager for Dresser Atlas in Jackson, has been promoted to Administrative Assistant to the Continental Area Manager in Houston. Jerry and his family moved to their new location on March 8.

AAPG - CCOP - PSA  
CIRCUM-PACIFIC ENERGY AND MINERAL RESOURCES CONFERENCE

HONOLULU, HAWAII 1974

MARK YOUR CALENDAR FOR SCIENCE - FUN - SUN

WHAT: Conference on Circum-Pacific Energy and Mineral Resources

WHERE: Hilton Hawaiian Village  
Honolulu, Hawaii

WHEN: August 26-30, 1974

SPONSORED BY: The American Association of Petroleum Geologists (AAPG), the Committee for Coordination of Joint Prospecting for Mineral Resources in Asian Offshore Areas (CCOP), and the Pacific Science Association (PSA)

PURPOSE: Exchange information to aid in search for energy and mineral resources of the Circum-Pacific Area

PROGRAM: Papers - Field Trips - Discussions - Maps

WHO TO CONTACT FOR INFORMATION: Michel T. Halbouty, General Chairman  
The Michel T. Halbouty Building  
5111 Westheimer Road  
Houston, Texas 77027

FOR PAPERS: Harold M. Lian, Chairman, Technical Program Committee  
Union Oil Company of California  
P. O. Box 7600  
Los Angeles, California 90054



SMACKOVER'S ORIGIN

What follows is a tidbit of etymology submitted by Jack Kern of Chevron. I wonder: are there many other well-known geological terms that have this kind of history?

"Few persons would recognize SMACKOVER, the name of a small town in Arkansas, as French, and yet in its original form it was CHEMIN COUVERT. Schele de Vere, in 1871, recorded the degeneration of the name to SMACK COVER; the Post Office, always eager to shorten and simplify names has since made one word of it and got rid of the redundant C."

French            chemin - road  
French            couvert - cover  
French            de - of

therefore: road of cover, or protected roadway

Reference: The American Language, p. 533, 4th Edition, 1936  
Reprinted from NOGSTDG, January, 1974.



## GEOLOGICAL DISCUSSION GROUP

The second meeting of the Geological Discussion Group will be held on April 15, 1974, at 12:00 noon in the Smackover Room of the Capital City Petroleum Club.

The purpose of this type of gathering, which will be held monthly, is to provide interested people in the oil industry an opportunity to discuss openly and informally various subjects that confront the industry today, whether it be geology and its related fields or various nontechnical topics. The subject matter for these discussions will be decided by the group.

Everyone is invited. No advance reservations are necessary. Those attending are asked to go through the buffet line and take their lunch to the Smackover Room. Nonmembers of the Club may have a member sign for their meal and then reimburse him.

At this April meeting, Hilton Ladner, Jackson, Mississippi, will kick off the discussion by commenting on exploration in the Black Warrior Basin of Northeast Mississippi and Northwest Alabama.

If anyone has any questions pertaining to arrangements, etc., please call either Dan Herlihy (982-5412) or Gene Taylor (969-2117).



# PROGRESS

By Jim McMullen — Petroleum Information

Mississippi Completions — February, 1974

Exploratory	Oil	Gas	Dry
Eocene	0	0	8
UK	0	0	0
LK	0	0	4
Jurassic	0	0	4
Paleozoic	0	1	2

Development	Oil	Gas	Dry
Eocene	4	0	0
UK	2	0	1
LK	0	0	1
Jurassic	0	0	0
Paleozoic	0	3	3

### New Field Discoveries

Marion Co., Cedar Grove Field, Moon-Hines Co. No. 1  
 Boyette-Smith, Sec. 17-15S-17W.  
 IP/F (3330-36')  
 2,420,000 CFGPD  
 Carter Sand-Mississippian

### SPONSORS FOR MGS MARCH MEETING

Gulf Coast Drilling Company  
 Freedom Oil Company

<b>TRIAD OIL &amp; GAS CO., INC.</b> Oil Property Management 1290 Petroleum Bldg. Jackson, Mississippi 355-9693
<b>ROBERT L. THOMSEN</b> Jackson, Mississippi
<b>JAMES B. FURRH, JR.</b> Oil Producer 1236 Capital Towers Jackson, Mississippi
<b>L. WICK CARY</b> Consulting Geophysicist Room 932 National Bank of Commerce Bldg. Box 50391 New Orleans, La.
<b>MARVIN L. OXLEY</b> Consulting Geologist 213 South Lamar Street Jackson, Miss. 39201 601-355-1841 601-956-6446
<b>ROBERT WOMACK, JR.</b> Consulting Geologist 1509 Standard Life Bldg. Phone 353-4650 Jackson, Miss. 39201
<b>SOUTHERN NATURAL GAS CO.</b> P. O. Box 1513 Donald R. Scherer, Dist. Geologist Houston, Texas 622-7270

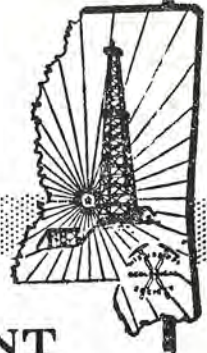
<b>TRIAD OIL &amp; GAS CO., INC.</b> Oil Property Management 1290 Petroleum Bldg. Jackson, Mississippi 355-9693
<b>FOREST OIL CORPORATION</b> 1535 One Shell Square New Orleans, La. 70139 504-524-5849
<b>M. D. MYERS</b> Consulting Geologist P. O. Box 10553 Jackson, Mississippi 39209 Phone 355-3536
<b>SCHLUMBERGER WELL SERVICES</b> Jackson, Mississippi Phone 352-8589
<b>SEISMOGRAPH SERVICE CORP.</b> A Subsidiary of Raytheon Corp. Don Underwood, Mgr. Gus Fiongos, Mgr. Data Proc. Jackson, Mississippi Phone 982-9120
<b>HERBERT J. FERBER</b> Consulting Geophysicist 5456 Hartsdale Drive Jackson, Mississippi 956-4666
<b>GEOMAP COMPANY</b> MAPPING SERVICES BASE MAPS • REFERENCE MAPS DALLAS HOUSTON MIDLAND DENVER
<b>MORTON M. PHILLIPS</b> Petroleum Geologist 902-G Milner Bldg. - Ph. 355-3364 Jackson, Miss. 39201
<b>FRANK HOWSON ASSOCIATES</b> 5531 Dyer St., Suite 110 Dallas, Texas 75206 214 - 361-8467
<b>CLAUDE B. HAMMILL</b> Oil Operator 2306 First Nat'l. Bank Bldg. Houston, Tex. 77002
<b>GERMANY INVESTMENT CO.</b> Norman G. Germany Dallas, Texas E. Wilson Germany Natchez, Mississippi
<b>OIL WELL LOGGING, INC.</b> P. O. Box 16039 - Jackson, Miss. 354-3642
<b>CRUDE OIL PURCHASING, INC.</b> (New Miss. Crude Oil Buyers)



# NEWS

# BULLETIN

LIBRARY  
MISSISSIPPI GEOLOGICAL ECONOMIC  
& TOPOGRAPHICAL SURVEY



mississippi geological society

VOL. <sup>21</sup> ~~XXIX~~, No. 9, May, 1974

## TAYLOR VS TWINER FOR PRESIDENT ELECTION AND BARBECUE END YEAR MAY 21

PRESIDENTIAL REVIEW

ELECTION-BARBECUE AT FOWLER LODGE

Another year has almost passed and in May our Society will elect another slate of officers for the 1974-75 term. It has been a pleasure for me to serve as president through this almost-expired "Society Year." This tenure has been enjoyable for several reasons but primarily because we have had no insurmountable problems through the year and because our other officers have done a marvelous job in performing their duties in keeping the Society operating on an even keel.

A great number of our members have contributed time and effort as committeemen and chairmen and I am deeply grateful for their assistance. These are the people who really keep a society operating and I wish to thank each one: Prentiss Boatner, Larry Boland, Jim Bollman, Kevin Cahill, Jerry Callison, Dave Cate, Sarah Childress, Tom Clements, Paul Day, Paul Gribas, Riley Hagan, David Harrell, Harold Karges, Marshall Kern, John McCarty, Jim McMullen, Bill Moore, Frank Murrell, Marvin Oxley, John Paxton, T. C. Rader, Dale Reese, John Richart, Howard Samsel, Don Smith, Buddy Twiner, Jimmie Walker, Stew Welch, Jim White, Tom William, Charlie Williams and Jerry Zoble.

The Society is indebted to companies and individuals who have contributed generously to the support of our barbecues, golf tournament, "bright spot" seminar and social hours. We would be in financial difficulty were it not for this support.

Buddy Twiner is putting the finishing touches on the Jurassic Cross Sections and they will be available in May. Needless to say, Buddy has endured several headaches in getting the sections completed.

At the present we have approximately 335 members and our finances are fair. We have had interesting speakers this year and our golf tournament, barbecues and social hours have been great. Overall, I think our society has had a successful year.

However, next year (1974 - 75) all of us will be put to the test. The Mississippi Geological Society will host the annual G.C.A.G.S. convention in Jackson during October, 1975. The M.G.S. officers, G.C.A.G.S. President Bill Moore, and General Chairman Charlie Williams will need and require a great deal of help. I call upon all of our membership to join freely in contributing papers, time, and energy in planning and hosting a successful convention.

Election of 1974-75 officers for the Mississippi Geological Society will be held in conjunction with the annual spring barbecue at the Fowler Buick Lodge on the Ross Barnett Reservoir, Tuesday, May 21, 1974. Members unable to attend the barbecue can obtain absentee ballots from Secretary Elwood Ruhl. The lodge will open at 4:30 p.m., and beer will be available from then until closing. The barbecue will be served at 6:30 p.m.

Both the fall and spring barbecues have always been popular events with the membership and usually draw the largest crowds of the year. Consequently, the opportunity is ripe for all members to meet one another and make plans for the coming MGS year. This year's event is a "freebee;" no charge is made but your dues must be paid. Dues may be paid to the secretary in advance or paid at the door the evening of the barbecue.

Newcomers to the Jackson area should follow I-55 North to the Northside Drive interchange, exit east on Northside Drive then turn left on Old Canton Road. Proceed northeast on Old Canton Road for approximately six miles to the Ross Barnett Reservoir Crossroads, turn right, go to the first intersection and turn left to the west side of the reservoir. Follow this road until you see an MGS sign at the entrance of the Fowler Buick Lodge.

Those MGS members who attended the barbecue last fall will be happy to know that the Halliburton crew will be on the job again preparing the feast. T. C. Rader will supervise the wedding of meat with sauce over glowing coals, and his side kick, J. C. (Daddy-O) Phillips, will be baking his famous "Oil Field Biscuits." The menu will be as follows:

- Hors d'oeuvres - barbecued sausages
- Meats - barbecued beef, chicken, ribs, and ham steaks
- Vegetables - barbecued beans, potato salad
- Hot biscuits - olives - pickles, etc.
- BEER - coffee - tea

Regulations require that a catering service be employed for all social functions serving food at the lodge. We will comply by hiring catering personnel as KP's and Pit Maintenance Engineers.

Reservations are a MUST and everyone planning on going should call T. C. Rader's office at 948-4128 no later than noon, Monday, May 20.

A Nominating Committee headed by Prentiss Boatner has selected the following list of candidates for office in the Mississippi Geological Society during 1974-75. Brief biographies and pictures of the candidates are shown on the following pages to help voters select the candidate of their choice. The nominees are: for President, W. E. (Gene) Taylor and Buddy Twiner; for First Vice-President, Harry Fritz versus Dick Doxey; for Second Vice-President, Elwood Ruhl and Gerald Kinsley; for Secretary, John Myers and Sarah Childress; and for Treasurer, Jerry Zoble versus Jim White.

### MISSISSIPPI GEOLOGICAL SOCIETY CALENDER

- May 21 Election and Barbecue Fowler Lodge  
Doors open 4:30 p.m. - Dinner 6:30 p.m.
- May 31 Doodlebugs Open - Family Picnic  
Tee Off 8:30 a.m. - 12:30 p.m.  
Picnic - 2:30 p.m.

For reservations to the May 21 Barbeque call T. C. Rader's office by noon Monday, May 20. Phone 948-4128.



## MISSISSIPPI GEOLOGICAL SOCIETY

### OFFICERS

Larry Walter	President	Consultant
W. E. (Gene) Taylor	1st Vice President	Consultant
Harry E. Frltz	2nd Vice President	Gulf Oil Co.
Elwood M. Ruhl	Secretary	Florida Gas Explor. Co.
John D. Myers	Treasurer	Placid Oil Co.

### REPRESENTATIVES

Stewart W. Welch	AAPG House of Delegates	Consultant
Howard Samsel	AAPG House of Delegates	Union Oil of Calif.
Frank Murrell	GCAGS	Ashland Oil Co.
Jerry Zoble	GCAGS	Consultant

### NEWS BULLETIN STAFF

Sarah Childress	Editor	Miss. Geological Survey
Paul Gribas	Advertising Mgr.	Shenandoah Oil Co.
John Rlchart	Personal News	Union Oil of Calif.
Jim McMullen	Statistics	Petroleum Information

PRINTED IN JACKSON, MISSISSIPPI

## THE ANSWER?? ENERGY CRISIS CRY: BACK TO BUNDLING!

Everyone is coming up with new methods of helping during the energy crisis.

Prof. Heinrich Applebaum has just written a paper titled "Bundling and the Energy Crisis" which he presented to the Society of Thermostat Inspectors.

Applebaum told me after giving his report, "The place where we waste the most heat in our homes is in bed. America can no longer afford the luxury of having one person sleep in bed all by himself. If we can persuade people to voluntarily share their beds, we could turn down the thermostats in our homes seven degrees."

"Would these people have to be married?" I asked.

"In normal times I would say yes. But this is the biggest emergency our country has ever faced and I think people should be given waivers if they aren't married, at least until the crisis is over."

"Then you consider bedpooling as a major solution to the heating shortage?"

"Absolutely. We must make Americans feel unpatriotic if they go to bed alone."

"It sounds great on paper," I said, "but suppose people refuse to share their beds with others?"

"Then the government will have to step in and take forceful measures. These could include putting a surtax on citizens who insist on sleeping alone. This tax would be so high that it would be unprofitable to refuse to bundle with somebody else. We could also give tax deductions to those who are willing to pool their beds. For example, if Bob and Carol and Ted and Alice were willing to bundle together, they would get 10 percent off on their income taxes."

"What about people who have to sleep alone, such as policemen, doctors and newspaper reporters?"

"They would have a special sticker put on their beds exempting them from the bundling laws. This sticker would be given only to people who could prove their work is so essential they cannot bundle up with anybody."

"How do you think the American people will take to forced bundling?"

"I think the American people will be willing. Body heat is still the greatest resource this country has, and we can get through the winter providing everyone cooperates with each other."

"Suppose you have a large empty bed and no one to bundle with?"

"We hope to set up bedpooling information centers. All you would have to do is call a number and we'd tell you who is looking for someone to share a bed."

"It sounds complicated," I said. "But I guess it's worth it."

Applebaum said, "It will work. To get the people to cooperate, we will have an advertising campaign on television."

"What will be your slogan?"

"Every time you share your bed this winter, something in an Arab sheik dies."

by Art Buchwald

## AAPG NEWS

G. Moses Knebel of Austin, Texas, retired senior exploration advisor of Standard Oil Company of New Jersey (now Exxon Corporation), has received the highest honor given by the American Association of Petroleum Geologists, the Sidney Powers Memorial Medal.

Announcement of plans for presentation of this and other awards was made March 18 by AAPG President Daniel A. Busch.

Knebel received the gold medal at an Awards Banquet held during the Annual Convention of the AAPG in San Antonio, Texas, April 1-3, in recognition of his outstanding accomplishments in the field of petroleum geology and his efforts in educating and inspiring younger geologists. He is a past-president of AAPG, and has been active in Association affairs for many years.

The Human Needs Medal, given in recognition of significant contributions to human needs through geology, went to Cecil H. Green, honorary chairman of the board of directors of Texas Instruments, Inc., Dallas, Texas. Green has been a leader in support of education in the earth sciences and the development of technology that has greatly increased the effectiveness of geophysics for discovering hydrocarbons.

AAPG bestowed three honorary memberships on veteran members who have made outstanding contributions to the Association and to the profession of petroleum geology. They are: Harold W. Hoots, Stanford University, Stanford, Calif.; M. King Hubbert, U.S. Geological Survey, Reston, Va.; and Leonard F. McCollum, retired chairman of the board of Continental Oil Co., Houston, Tex.

Dean A. McGee, chairman of the board and chief executive officer of Kerr-McGee Corporation received the Public Service Award. McGee has been an active supporter of a host of educational, scientific, medical and cultural institutions in the public interest. He is an Honorary Member of AAPG and serves as Chairman of the Trustees of the AAPG Foundation.

The Distinguished Service Award for 1974 was presented to John T. Galey, independent geologist, of Somerset, Pa. Galey was instrumental in organizing the present Eastern Section of AAPG and served as a chairman of the Section's first convention.

Max B. Skelton, Associated Press correspondent of Houston, Tex., received the Association's Journalism Award for his lucid reporting on the subject of petroleum geology.

A special award was presented at the 58th Annual Meeting of AAPG honoring Conrad and Marcel Schlumberger, developers of the electric log which has been a fundamental tool of the petroleum geologist since the 1930's. Pierre Schlumberger of Paris, France, will accept the award on behalf of the Schlumberger family.

Awards for outstanding scientific papers on petroleum geology were given as follows: George C. Matson Award to Leigh C. Price, U. S. Geological Survey, Denver, Colo., for the best paper presented at the preceding convention; President's Award to Rufus J. LeBlanc, Shell Oil Co., Houston, Tex., for the best paper published by AAPG during 1972; and J. C. Sproule Memorial Award to Ashton F. Embry, University of Calgary, Calgary Alta., Canada, for the best paper by an author under the age of 35.



## CANDIDATES FOR PRESIDENT

The duties of the President shall be to preside at all meetings, maintain order, call special meetings subject to the approval of the Board of Directors, appoint all committees, and shall delegate members to represent the Society. He may at his option serve on any committee. He shall, together with the Treasurer, sign all checks, drafts, contracts, and all other obligations of the Society. In the temporary absence of any other officer of the Society, he shall have the power to appoint a member to assume the duties pro tempore.



**W. E. (GENE) TAYLOR**

**Education:** B. S. 1950 Indiana University  
M. S. 1952 Indiana University

**Employment:** 1952-67 Union Producing Company  
1967-72 Pennzoil-United  
1972- Consulting Geologist

**Societies:** AAPG  
MGS - Past Editor of News Bulletin  
1973-74 1st Vice President



**JAMES W. TWINER**

**Education:** B. S. 1960 Mississippi State University  
1963-68 Chevron Oil Company

**Employment:** 1968-72 Skelly Oil Company  
1972- Union Oil of California

**Societies:** JGS -  
MGS - 1969-70 Projectionist  
1969-70 News Bulletin Staff  
1970-71 Treasurer  
1971-72 2nd Vice-President  
1973-74 Jurassic Cross-Section Committee

## CANDIDATES FOR FIRST VICE-PRESIDENT

Shall assume the office of the President in case of a vacancy from any cause in that office, and shall assume the duties of the President in case of the absence or disability of the latter. He shall be at the disposal of the President for any duty necessary to the proper functioning of the Society.



**HARRY E. FRITZ**

**Education:** B. S. 1950 Duquesne University

**Employment:** 1951-54 Gulf Research & Development  
1954- Gulf Oil Co., U.S.

**Societies:** AAPG  
SEG - National Committee - Continuing Education, 1971-72  
JGS - General Chairman - Annual Outing  
MGS - 1971-72 News Bulletin Staff  
1971 MGS Representative, Advertising GCAGS  
1972-73 Editor, News Bulletin  
1973-74 2nd Vice-President



**HINDMAN (DICK) DOXEY**

**Education:** B. A. 1951 Mississippi State University  
B. S. 1959 Louisiana State University  
M. S. 1962 Louisiana State University

**Employment:** 1954, 56-58 Delta Exploration  
1962 - 63 Atlantic Refining Co.  
1963 - 68 GSI  
1969 - Cities Service

**Societies:** AAPG  
JGS  
MGS



## CANDIDATES FOR SECOND VICE-PRESIDENT

Shall be responsible for the maintenance and supervision of the various publications of the Society and shall organize the necessary committees to properly administer the care, maintenance and revision of the publications necessary to providing current information on various subjects of geologic interest and the keeping of records.



ELWOOD M. RUHL

Education: B. A. 1954 Michigan State University  
M. S. 1961 Michigan State University  
Employment: 1961-71 Chevron Oil Co.  
1971- Southeastern Exploration / Florida  
Gas Exploration Company  
Societies: MGS - 1973-74 Secretary



GERALD W. KINSLEY

Education: B. A. 1958 University of Missouri  
M. A. 1960 University of Missouri  
Employment: 1960-70 Texaco  
1970 Independent  
1970- Lone Star Producing Co.  
Societies: Miss. Association Petroleum Landmen  
JGS  
AAPG  
SEPM  
MGS - 1968 Publications Committee  
GCAGS

## CANDIDATES FOR SECRETARY

Shall assume the duties of the President in case of the temporary absence of all the other offices, except the Second Vice President. It shall be the duty of the Secretary to fully and permanently record the minutes of all the meetings of the Society and all meetings of the Board of Directors. He shall prepare and distribute by mail not later than October 15 a membership list and a list of committee assignments. It shall be his duty to prepare and keep in his possession at every meeting a copy of the Bylaws with all amendments thereto. He shall be responsible for all secretarial duties connected with affairs of the Society. He shall prepare all ballots and papers necessary to any Society election.



JOHN D. MYERS

Education: B. S. 1951 Mississippi State University  
M. S. 1956 Mississippi State University  
Employment: 1956-68 Phillips Petroleum Co.  
1968-70 Consulting Geologist  
1970- Placid Oil Co.  
Societies: AAPG  
GCAGS - 1968 Best Paper Award  
MGS - 1973-74 Treasurer



SARAH C. CHIEDRESS

Education: B. S. 1972 University of Southern  
Mississippi  
Employment: 1972- Mississippi Geological Survey  
Societies: Mississippi Academy of Science  
MGS - 1973-74 Editor, News  
Bulletin  
1975 GCAGS Printing Committee



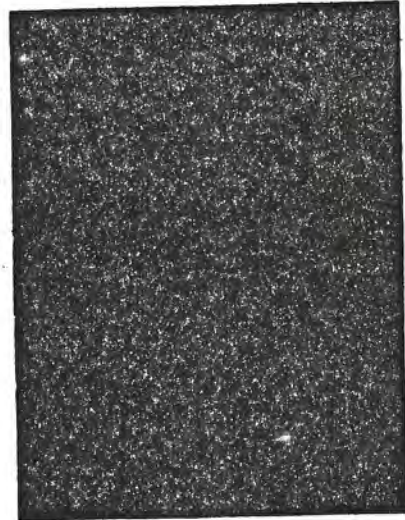
## CANDIDATES FOR THE TREASURER

Shall assume the duties of the President in case of the temporary absence of both the President and First Vice President. He, together with the President shall have charge of the financial affairs of the Society. He shall submit an annual report and inventory at the last meeting before the summer recess, and any other special reports upon the request of the President. He shall receive and disburse all monies; however, expenditures in excess of one hundred dollars shall be made only with the approval of the Board of Directors. During the month of August, the Treasurer shall send statements or notices of dues to all members, except honorary members.



JERRY E. ZOBLE

Education: B. S. 1953 University of Wyoming  
M. A. 1957 University of Wyoming  
Employment: 1955-67 Pan American Petroleum Corp.  
1967-71 Occidental Petroleum Corp.  
1971- Consulting Geologist  
Societies: MGS - 1972 Jurassic Cross-Section  
Committee  
1973-74 GCAGS Representative



JIM WHITE

Education: B. S. 1951 Mississippi State University  
Graduate work, University of Southern  
Mississippi  
Employment: 1951-52 Shell Oil Co.  
1952-54 Mud Logger  
1954-56 LARCO Drilling Co.  
1956-65 Sinclair Oil & Gas  
1965-72 Skelly Oil Co.  
1972- Marr Co.  
Societies: JGS  
MGS - Projectionist 1973-74

## ABSENTEE BALLOTS AVAILABLE

The bylaws of the Mississippi Geological Society dictate that the election of officers shall be held at the last regular meeting of the Society before summer recess. This meeting is always the Spring Barbecue held in May. The Bylaws further provide that if any member cannot be present at the election meeting, he may request and obtain an absentee ballot from the Secretary of the Society to be sealed and returned to the Secretary before the election meeting. The Secretary will in turn deliver the sealed ballots to the Election Judges at the meeting. Therefore, if you cannot be present at the May 21 meeting and desire to vote, please contact Secretary Elwood Ruhl, in care of the Society address or by phone at 601-969-9111 to obtain an absentee ballot.

LIBRARY  
MISSISSIPPI GEOLOGICAL ECONOMIC  
& TOPOGRAPHICAL SURVEY







**NOTICE**

The Department of Geology at the University of Southern Mississippi is interested in obtaining short sections of oil-saturated cores for experimental work with the Department of Polymer Science. These departments will experiment with polymers which they anticipate can be used in extracting the "non-recoverable" oil from various types of reservoir rocks. Contact the Geology Department, Box 44 Southern Station, Hattiesburg or call 601-266-7195.

**IS EVERYTHING RELATIVE?**

Terrell Benton of Jackson says everything is relative. Or is it? he asks. He invites you to look at the following list and decide which is really worth more to you individually. The prices per gallon, including tax, are:

Coke, \$1.89; ice cream, \$1.75; cane syrup, \$1.99; peanut butter, \$4.77; beer, \$4.00; bourbon, \$30.75; LP gas, 35 cents; regular gasoline, 50 cents.

What do you think?

**BEWARE OF STRANGERS BEARING POOR PROSPECTS**

From the February AAPG EXECUTIVE REPORT - A convicted swindler is back in operation in the midwest. Basically, he promises layman leaseowners an evaluation of their mineral rights for a fee which is non-refundable if the evaluation is negative. He then retains a geologist (almost invariably a member of AAPG) to make the appraisal and write a report. The report is, of course, always negative since the "prospect" was chosen for its lack of merit in the first place. The swindler favors older geologists (he's 81 himself) living in small towns out of the mainstream of industry activity. Both AAPG and AIPG are attempting to stifle this man.

<b>TRIAD OIL &amp; GAS CO., INC.</b> Oil Property Management 1290 Petroleum Bldg. Jackson, Mississippi 355-9693		
<b>FOREST OIL CORPORATION</b> 1535 One Shell Square New Orleans, La. 70139 504-524-5849		
M. D. MYERS Consulting Geologist P. O. Box 10553 Jackson, Mississippi 39209 Phone 355-3536		
<b>SCHLUMBERGER WELL SERVICES</b> Jackson, Mississippi Phone 352-8589		
<b>SEISMOGRAPH SERVICE CORP.</b> A Subsidiary of Raytheon Corp. Don Underwood, Mgr. Gus Fiongos, Mgr. Data Proc. Jackson, Mississippi Phone 982-9120		
HERBERT J. FERBER Consulting Geophysicist 5456 Hartsdale Drive Jackson, Mississippi 956-4666		
<b>GEOMAP COMPANY</b> MAPPING SERVICES BASE MAPS • REFERENCE MAPS DALLAS HOUSTON MIDLAND DENVER		
MORTON M. PHILLIPS Petroleum Geologist 902-G Milner Bldg. - Ph. 355-3364 Jackson, Miss. 39201		
FRANK HOWSON ASSOCIATES 5531 Dyer St., Suite 110 Dallas, Texas 75206 214 - 361-8467		
CLAUDE B. HAMMILL Oil Operator 2306 First Nat'l. Bank Bldg. Houston, Tex. 77002		
GERMANY INVESTMENT CO. Norman G. Germany Dallas, Texas E. Wilson Germany Natchez, Mississippi		
OIL WELL LOGGING, INC. P. O. Box 16039 - Jackson, Miss. 354-3642		
<b>CRUDE OIL PURCHASING, INC.</b> (New Miss. Crude Oil Buyers)		

<b>TRIAD OIL &amp; GAS CO., INC.</b> Oil Property Management 1290 Petroleum Bldg. Jackson, Mississippi 355-9693		
ROBERT L. THOMSEN Jackson, Mississippi		
JAMES B. FURRH, JR. Oil Producer 1236 Capital Towers Jackson, Mississippi		
L. WICK CARY Consulting Geophysicist Room 932 National Bank of Commerce Bldg. Box 50391 New Orleans, La.		
MARVIN L. OXLEY Consulting Geologist 213 South Lamar Street Jackson, Miss. 39201 601-355-1841 601-956-6446		
ROBERT WOMACK, JR. Consulting Geologist 1509 Standard Life Bldg. Phone 353-4650 Jackson, Miss. 39201		
SOUTHERN NATURAL GAS CO. P. O. Box 1513 Donald R. Scherer, Dist. Geologist Houston, Texas 622-7270		