

NEWS

BULLETIN

mississippi geological society



VOLUME XIV
Number 1

SEPTEMBER, 1966

M G S E X E C U T I V E C O M M I T T E E

President	Alan Jackson	Humble Oil & Ref. Co.
Vice-President	Julius M. Ridgway	First National Bank
Secretary	Joe B. Carl	Chevron Oil Co.
Treasurer	Ed D. Minihan	E. L. Erickson
Past President	Sankey L. Blanton	Sun Oil Co.

1 9 6 6 - 1 9 6 7 C O M M I T T E E C H A I R M E N

Entertainment	G. H. Isbell, Jr.	Isbell Oil Co.
Program	J. M. Pulliam	Sun Oil Co.
Nomenclature	V. L. Culbertson	Gammill-Stranahan
Publications	W. A. Rutherford	Sun Oil Co.
Projection	W. E. Moore	Chevron Oil Co.
Professional Registration	X. M. Frascogna	Independent
News Bulletin	S. C. Guy	Union Producing Co.
Boy Scout	D. W. Layman	Victor Smith
Red Book Supplement	J. F. Fritz	Independent
GCAGS	M. L. Oxley	Lone Star Producing Co.
GCAGS Advertising	S. B. Spradley	Deposit Guaranty Bank

A. A. P. G. D I S T R I C T R E P R E S E N T A T I V E S

Term Expires 1967	R. B. Ross	Murphy Corporation
Term Expires 1967	M. L. Oxley	Lone Star Prod. Co.
Term Expires 1968	D. W. Layman	Victor Smith

F R E E!

F R E E!

F R E E!

BEER * BAR-B-Q * FELLOWSHIP

NOW HEAR THIS!

NOW HEAR THIS!

THE FOOTBALL SEASON IS JUST AROUND THE CORNER. TO ALL MEMBERS - PAST, PRESENT AND PROSPECTIVE. YOU ARE INVITED TO ATTEND THE MISSISSIPPI GEOLOGICAL SOCIETY KICKOFF EVENT.

DATE: September 13, 1966
PLACE: Mississippi Power & Light Lodge
KICKOFF TIME: 4:30 P.M.

ADMISSION FEE: Your annual \$5.00 membership dues, payable at the door, or a current receipt for same.

You old members are welcomed back for another season, and we hope that you will urge any prospective member to join the Society and attend this event. We need your support in promoting the Society and the profession it represents.

Y'ALL COME!

George H. Isbell, Jr.
Entertainment Chairman

(2)

FOR RESERVATIONS CALL:

George Isbell 948-4881
or
Riley Hagan 354-1671
or
Dan Morgan 353-3533

On or before 12:00 noon, September 12, 1966

PROGRAM NOTES

* * SPECIAL PROGRAM * *

"CERTIFICATION AND THE PROFESSIONAL GEOLOGIST"

SPEAKER: Dr. Ben H. Parker - President of the American Institute of Professional Geologists, Past President and Honorary Member of the American Association of Petroleum Geologists, former President of the Colorado School of Mines, President of the Board of Trustees of the Colorado School of Mines, Senior Vice-President and Director of Frontier Refining Co., of Denver.

DATE: Monday, September 26, 1966
PLACE: Sun-N-Sand Motor Hotel
TIME: 7:00 P.M.

FOR RESERVATIONS CALL:

~~George Isbell~~ 948-4881
or
Riley Hagan 354-1671
or
Dan Morgan 353-3533

On or before 12:00 Noon, September 26, 1966

We have an excellent nucleus of speakers for our 1966-67 program. In addition to the above program on certification in late September, the following speakers are scheduled:

Robert L. Folk, University of Texas
Subject: "Carbonates"

Marvin L. Oxley, Lone Star Producing Co.
Subject: "Jurassic Trend of Mississippi and Alabama"

Maurice Ewing, Lamont Geological Observatory
Subject: "Geophysical and Geological Investigation
of the Gulf of Mexico"

E. H. Rainwater, Tenneco Oil Co.
Subject: "Delta Formation"

All of the above talks will be held in Jackson, Mississippi; however, our January meeting will be held in Natchez. A speaker for that time has not been chosen. We are also working on a Continuing Education Seminar, which is still tentative.

Jim M. Pulliam
Program Chairman

WHAT'S GOING ON.

Martin Van Couvering (CPG#1), the first president and immediate past president of the AIPG and prominent consulting geologist from Pasadena, California, will be a guest at the September 26th meeting of the Society.

Bob Vesper, district exploration geologist with Humble in Hattiesburg, has been transferred to New Orleans. He will be replaced by Harry Smith from the New Orleans office.

Prof. B. W. Brown of the University of Southern Mississippi has spent the past summer in Spitzbergen in studies for the Norwegian Polar Institute on metallic mineral prospects there.

Fred Smyth, district geologist for Sun, has been transferred to Roswell, N. M. Mr. Gilbert Boyd of Dallas will assume duties here.

Norwood Varnado, formerly with Shell, has opened offices as an independent geologist at 430 Petroleum Building. (353-4937)

Charlie Bush, formerly with Schlumberger, will open offices in Jackson in the near future.

Dr. Oscar Paulson (Ph.D. 1960 - LSU) has joined the Department of Geology at USM as a paleontologist.

FROM AAPG NEWS BULLETIN

TULSA, OKLA. -- Major oil companies and a supplier this year are recognizing the Semi-Centennial anniversary of the 15,000-member American Association of Petroleum Geologists through their advertising.

Michel T. Halbouty, AAPG president, said that "these companies recognize that mutual benefits accrue to both the petroleum industry and the Association by emphasizing the many contributions the geologist has made to the achievement of our present high standard of living."

Mr. Halbouty said that "salutes" to the Tulsa-based AAPG and the petroleum geologist are included in the radio and television advertising sponsored by Standard Oil Company of California, Shamrock, Cities Service, Atlantic Richfield, Phillips, American Oil, American Petrofina, Humble Oil, Continental Oil and Tenneco.

* * * * *

I hope that items of interest concerning Society members and the oil industry in Mississippi in general will continue to be submitted to the News Bulletin throughout the year. Let the rest of us get the word.

Sam C. Guy
News Bulletin Editor

ABSTRACTS OF INTEREST

Abstract of a paper presented at the Annual Meeting of the American Geophysical Union, Washington, D. C., April 20-23, 1966.

Tectogenetic Relations of Major Late Jurassic-Early Cretaceous Arching and Lava Extrusion in Southern Brazil

by

Richard L. Bowen (Univ. of Southern Mississippi)

The major structural interruption of the otherwise little disturbed Parana Basin, South America, in the Ponta Grossa Arch, southern Brazil, whose uplift is about six to eight kilometers. More than 500,000km³ rose over an area of radius 250 km. Maximum uplift occurs approximately where mapping and paleogeographic analysis indicate maximum subsidence of the Parana Basin took place in Late Paleozoic and Early Mesozoic times. Mapping also reveals abundant basic dikes cutting the basement interior and bordering sedimentary terranes of the arch. These terranes in turn are covered by Upper Jurassic to Early Cretaceous basic lavas. These are thickest (to 1500 + m) concentric to the Ponta Grossa Arch and thin gradually northward, westward and southward.

Distribution of basic dikes, subsidence of other areas, and mapped variations

of lava petrology all indicate that extrusion of the approximately one million cubic kilometers of basic lavas genetically and geographically relates to upwarping of the Ponta Grossa Arch. Its location in turn appears genetically related to Late Paleozoic subsidence.

Theories suggesting that extrusion of these lavas resulted from rifting associated with separation of South American from Africa appear contradicted by this analysis.

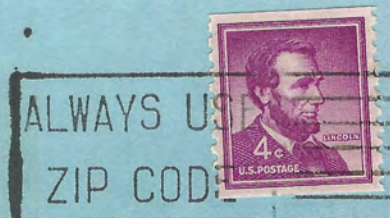
GEOMORPHIC COMPLEXITY IN SOUTHEASTERN MISSISSIPPI
by
Richard L. Bowen (Univ. of Southern Mississippi)

The surficial deposits of southeastern Mississippi are largely Neogene sands, gravels, and clays. Although this region was modified by Quarternary climatic changes and sea level fluctuations, many geomorphic features present seem to reflect the importance of structural control on their development. Major such features include linear drainage courses, some of which exceed 50 miles in length, and extensive gently cuesta-form interfluvies whose steeper slopes face easterly to northerly.

Second order features are more varied. They include linear north-south, northwest-southeast, and northeast-southwest drainage courses up to ten miles or more in length (sets of as many as five such parallel courses are mapped); rudimentary rectangular drainage localized in areas to greater than township sizes; and smooth arcs to as much as 120° change in flow direction of drainage over stream distances up to fifteen miles. Other complexities are shown by incised segments of stream courses which otherwise are at grade, strong development of fine-grained rectangular drainage in small areas, and areas up to ten square miles in size of flat upland residual in a region of 60" rainfall and dominantly fine textured drainage.

The above, abstract of paper presented at the Annual Meeting of the Southeastern Section, Geological Society of America, Athens, Georgia, April 13-15, 1966.

Mississippi Geological Society
P. O. Box 422
Jackson, Mississippi



Joseph B. Carl
Box 822
Jackson, Mississippi

NEWS

BULLETIN



mississippi geological society

VOLUME XIV
Number 2

OCTOBER, 1966

M G S E X E C U T I V E C O M M I T T E E

President	Alan Jackson	Humble Oil & Ref. Co.
Vice-President	Julius M. Ridgway	First National Bank
Secretary	Joe B. Carl	Chevron Oil Co.
Treasurer	Ed D. Minihan	E. L. Erickson
Past President	Sankey L. Blanton	Sun Oil Co.

1 9 6 6 - 1 9 6 7 C O M M I T T E E C H A I R M E N

Entertainment	G. H. Isbell, Jr.	Isbell Oil Co.
Program	J. M. Pulliam	Sun Oil Co.
Nomenclature	V. L. Culbertson	Gammill-Stranahan
Publications	W. A. Rutherford	Sun Oil Co.
Projection	W. E. Moore	Chevron Oil Co.
Professional Registration	X. M. Frascogna	Independent
News Bulletin	S. C. Guy	Union Producing Co.
Boy Scouts	D. W. Layman	Victor Smith
Red Book Supplement	J. F. Fritz	Independent
GCAGS	M. L. Oxley	Lone Star Producing Co.
GCAGS Advertising	S. B. Spradley	Deposit Guaranty Bank

A.A.P.G. DISTRICT REPRESENTATIVES

Term Expires 1967	R. B. Ross	Murphy Corporation
Term Expires 1967	M. L. Oxley	Lone Star Producing Co.
Term Expires 1968	D. W. Layman	Victor Smith

C O N T I N U I N G E D U C A T I O N S E M I N A R

In line with last year's general presentation on carbonates by Phillip Braithwaite of Sun Oil Company and the current talk on carbonate muds and associated sediments by Dr. R. L. Folk from the University of Texas, the Mississippi Geological Society is sponsoring the following seminar under the auspices of the AAPG Continuing Education Program:

Topic: "Carbonate Rocks"
 Speaker: Mr. John F. Harris, Consulting Geologist,
 Tulsa, Oklahoma
 Date: November 10-12, 1966
 Place: Sullivan-Harrell Hall, Millsaps College
 Time: 7:00 PM - Thursday and Friday
 TBA - Saturday Morning

This lecture series has been planned with the average petroleum geologist in mind, so that maximum benefit may be obtained by those attending. Further details will be sent out at a later date, but the following are a few of the topics that will be discussed:

- Facies recognition and porosity origin
- Structural alteration and porosity origin
- Origin and significance of dolomite
- Mechanical logs: their use and abuse

Depositional carbonate facies
 The dolomite problem
 Structural control of fracture development
 Tectonic dolomitization
 Application of carbonate concepts to exploration

The MGS needs a good turnout for this program; and, with the above subject matter, it should be worth a few hours time to get caught up with some of the newer trends in geological thinking. Improve yourself as you help your professional society.

* * * * *

A REMINDER

The regular monthly meeting of the MGS will be held on Friday, October 14, 1966, in the Crown Room of the King Edward Hotel. Speaker for the evening will be Dr. Robert L. Folk of the University of Texas, who will talk on "The Origin of Carbonate Muds, Turbidity Muds and Associated Sediments." Social hour begins at 6:00 P.M. and dinner is at 7:00 P.M.

Please call George Isbell (948-4881) or Riley Hagan (354-1671) for reservations before noon, October 14.

* * * * *

FOURTH ANNUAL FIELD TRIP

Alabama Geological Society

December 2 & 3, 1966

The facies changes occurring in the Paleocene, Eocene, and Oligocene sediments of the Alabama Coastal Plain will be examined in the south-central and south-western portions of the State. The stop discussions will reflect recently completed research projects in the Alabama Coastal Plain in the fields of stratigraphy, paleontology, biostratigraphy and clay mineralogy.

The two-day field trip will leave from the Ramada Inn in Mobile, Alabama at 7:00 a.m., Friday morning, December 2. Friday night will be spent at the Holiday Inn in Selma, Alabama. The trip will return to the Ramada Inn in Mobile, Alabama, Saturday night, December 3. Travel will be by Greyhound bus.

Guidebooks and registration materials will be available at the Ramada Inn after 5:00 p.m., December 1. Cost of the trip is \$20.00 per person. The registration fee includes the guidebook, bus transportation, banquet (Saturday night) and two box lunches. Motel reservations will be made for all those registering by November 10. Participants are individually responsible for the motel fees, breakfasts and Friday night supper.

Activities associated with the trip include an informal pre-trip assembly on Thursday, December 1, at 7:00 p.m. at the Ramada Inn. A banquet Saturday night, December 3 at Constantines Restaurant adjoining the Ramada Inn will end the festivities. The banquet will be preceded by a social hour.

For further pre-registration information, write to Charles W. Copeland, Geological Survey of Alabama, P. O. Drawer "O", University, Alabama. Registration is limited to the first 80 persons submitting pre-registration forms before November 10, 1966.

* * * * *

GCAGS NOTES

The A. I. Levorsen Memorial Award for the author of a paper judged to have "demonstrated the most creative thinking directed toward new ideas in petroleum exploration" will be presented at forthcoming AAPG regional meetings. The GCAGS annual convention is considered to be such a meeting and this year Marvin Oxley (Lone Star Producing Company) and Ed Minihan (E. L. Erickson) will present a paper entitled "Pre-Cretaceous Geology of Pool Creek Field, Jones County, Mississippi" at the Lafayette, La., meeting on October 26-28.

Marvin Horton (Chevron) has been nominated as a candidate for vice-president of the GCAGS.

Last, but not least, MGS members should be girding up their loins in preparation for hosting the 1968 GCAGS Convention. New hotel facilities, which should be adequate by that time, plus our recent deliverance from the adherents of Carrie Nation, have placed Jackson in the role of a convention city. This will involve plenty of hard work, so be thinking of good excuses!

* * * * *

The Jackson Geophysical Society will hold a meeting on Monday, October 17, 1966, at the King's Inn. Social hour starts at 5:30 p.m. and dinner, at 6:30 p.m. (price \$3.00). Miller Quarles from Petty Geophysical Company will discuss "A Universal Diffraction Chart for Practical Fault Interpretation." A special invitation is extended to MGS members to attend this and subsequent meetings of the Geophysical Society.

* * * * *

LOOKING AHEAD

The 1967 Convention of the GCAGS will be held October 25-27, 1967 in San Antonio, Texas, with the theme "Hidden Trends." The program committee (A. Wayne Wood, Chm.) is primarily interested in papers dealing with possible producing trends, the structure or trapping mechanism of which is not discernable at what may have been considered adequate drilling depths a few years ago (ex. unconformities, buried faults, or deep porosity traps). Papers of regional significance are being solicited.

Those wishing to contribute a paper to the program are asked to write to Mr. Wood or Dr. John Sandidge at 1100 Alamo National Building, San Antonio, Texas, 78205,

* * * * *

FROM AAPG NEWS BULLETIN

CALGARY -- Petroleum industry management was warned today that it should coordinate the efforts of geologists and geophysicists or suffer the consequences of finding less and less oil and gas.

Michel T. Halbouty of Houston, issued the warning in an address to the Calgary Joint Conference of the Alberta Society of Petroleum Geologists and the Canadian Society of Exploration Geophysicists.

"Management has pitted the geologist and the geophysicist against each other too long," he said. "Neither the geologist nor the geophysicist should permit this any more. They should try to persuade and convince management to either coordinate their efforts or suffer the consequence of finding less and less reserves. The geologist and the geophysicist can work together: management should not simply encourage but should force this alliance."

"Big reserves of the future lie in the less obvious traps-- such as stratigraphic," he said. "Finding these elusive traps will require creative, highly imaginative thinking combined with using tools of every applicable scientific discipline engaged in the search for new petroleum reserves."

Halbouty said the future for sound exploration is ingenuity and creativity tied to common sense and good reasoning.

While admitting that the most obvious surface and subsurface structures are known and have been tested, Halbouty told his audience that many sedimentary relationships favorable to the entrapment of petroleum in stratigraphic traps occur in practically all basins.

"We know some of these traps contain large amounts of petroleum because huge stratigraphic-type fields already have been found," he said.

"The explorationist will have to convince management that there are large fields to be found in the subtly hidden traps which lack any semblance of structure--the kind that will require 'the sticking out of neck' to find--the kind that's lying right under our noses," he said.

Jackson, Mississippi
Box 822
The California Company
Mr. Marvin Horton



Mississippi Geological Society
P. O. Box 422
Jackson, Mississippi



2

NEWS

BULLETIN



mississippi geological society

VOLUME XIV
Number 3

NOVEMBER, 1966

M G S EXECUTIVE COMMITTEE

President	Alan Jackson		Humble Oil & Ref. Co.
Vice-President	Julius M. Ridgway	354-3811	First National Bank
Secretary	Joe B. Carl		Chevron Oil Co.
Treasurer	Ed D. Minihan	354-4086	E. L. Erickson
Past President	Sankey L. Blanton	353-4727	Sun Oil Co.

1966 - 1967 COMMITTEE CHAIRMEN

Entertainment	G. H. Isbell, Jr.	366-7139	Isbell Oil Co.
Program	J. M. Pulliam		Sun Oil Co.
Nomenclature	V. L. Culbertson		Gammill-Stranahan
Publications	W. A. Rutherford		Sun Oil Co.
Projection	W. E. Moore		Chevron Oil Co.
Professional Registration	X. M. Frascogna		Independent
News Bulletin	S. C. Guy		Union Producing Co.
Boy Scouts	D. W. Layman		Victor Smith
Red Book Supplement	J. F. Fritz		Independent
GCAGS	M. L. Oxley		Lone Star Producing Co.
GCAGS Advertising	S. B. Spradley		Deposit Guaranty Bank

A.A.P.G. DISTRICT REPRESENTATIVES

Term Expires 1967	R. B. Ross	Murphy Corporation
Term Expires 1967	M. L. Oxley	Lone Star Producing Co.
Term Expires 1968	D. W. Layman	Victor Smith

NOVEMBER MEETING

Program: "Pre-Cretaceous Geology of Pool Creek Field, Jones County, Mississippi" *

Speaker: Edward D. Minihan (E. L. Erickson Co.)

Date: November 22, 1966

Place: Crown Room, King Edward Hotel

Time: 5:30 P.M. - Social Hour -- 6:30 P.M. Dinner

For Reservations: Call George Isbell (948-4881) or Riley Hagan (354-1671) before noon, November 22.

*The above paper was co-authored by M. L. Oxley (Lone Star Producing Co.) and presented at the 1966 meeting of the GCAGS at Lafayette, La.

CARBONATE SEMINAR: A REVIEW. . .

Oil exploration in carbonate reservoirs with emphasis on practical considerations was the theme. A very gratifying turnout occurred for this series of lectures by Mr. John F. Harris of Tulsa. Total attendance for the three-day meeting was sixty-one. The crash program on "reefs" (?) and dolomitization was not without its humorous moments as log-shufflers, geophysicists, majors, and management took it on the chin. It must have been pleasing to the older hands in the audience to see surface geology and well cuttings receive so much attention and importance. How this applies to Mississippi, Alabama, and Louisiana remains for you to decide.

Special thanks go to our service companies, Schlumberger and Lane-Wells, for the refreshments (which were sorely needed on Saturday morning...or was it late Friday night?) and to Dr. R. R. Priddy and the geology students at Millsaps, who donated something equally valuable - their time and labor. Thanks, too, to our Society recording engineer, lighting expert and maitre de, who kept things moving along at the breakneck pace necessary and to Dan Morgan for handling that bane of geologists - the paper work et al.

* * * * *

THE JACKSON GEOPHYSICAL SOCIETY will hold a meeting on November 21, 1966, at the King's Inn. Social hour starts at 5:30 p.m.; dinner at 6:30 p.m. Speaker will be M. D. Carter of Geophysical Services, Inc. who will talk on "New Geophysical Applications to Stratigraphic Traps." This should fit in with the current series of talks which have been given before the Geological Society.

* * * * *

FROM THE AAPG NEWS BULLETIN . . .

HOUSTON, Tex. -- Forty-two internationally prominent educators have accepted appointment to the Academic Advisory Committee of the American Association of Petroleum Geologists, according to Michel T. Halbouty, AAPG President.

The Academic Advisory Committee, under the leadership of Chairman Carey Croneis, Chancellor of Rice University, Houston, Texas, and Vice Chairman Grover E. Murray, President of Texas Technological College, Lubbock, Texas, will coordinate efforts to provide a continuing source of hi-caliber geology graduates to staff university faculties, governmental agencies, and provide competent geologists to search for the vast quantities of oil which are required for the future. Special attention will be given to coordination of secondary school activities in the geo-sciences so as to create early interest in this field with students before they enter college.

The Academic group will also assist AAPG in the further implementation of its Continuing Education Program, designed to help geologists guard against technical obsolescence in their field.

The members of the AAPG Academic Advisory Committee from this area are:

Louisiana - Clarence O. Durham, Jr., Chairman, Department of Geology, Louisiana State University, Baton Rouge; Henry V. Howe, Professor Emeritus, School of Geology, Louisiana State University, Baton Rouge.

HOUSTON, Tex. -- Thirty four prominent governmental officials have accepted appointment to the Federal, State and Local Agencies Advisory Committee of the American Association of Petroleum Geologists, according to Michel T. Halbouty, AAPG President.

The Federal, State and Local Agencies Advisory Committee is led by Chairman William T. Pecora, Director of the U. S. Geological Survey, Washington, D. C. and Vice Chairman Peter T. Flawn, Director of the Bureau of Economic Geology, Austin, Texas. This group will serve as liaison between the AAPG and the federal, state and local agencies which exert influence on the oil industry and, in particular, mineral resources and their disposition. Such liaison will include a flow of information between the agencies and the AAPG for the guidance of both. The Committee's members will also keep AAPG advised of current trends within the governmental agencies as they pertain to areas of Association interest.

The members of the Federal, State and Local Agencies Advisory Committee from this area are:

Alabama - Philip E. LaMoreaux, State Geologist, Geological Survey of Alabama, University.

Arkansas - Norman F. Williams, Geologist-Director, Arkansas Geological & Conservation Commission, Little Rock.

Florida - Robert O. Vernon, Director, Florida Geological Survey, Tallahassee.

Georgia - J. H. Auvil, Jr., Geologist, Department of Mines, Mining & Geology, Atlanta.

Louisiana - Leo W. Hough, State Geologist, Louisiana Geological Survey, Baton Rouge; James P. Spillers, Chief Geologist, Louisiana State Mineral Board, Baton Rouge.

* * * * *

Excerpts from - THE NEED FOR LOCAL GEOLOGICAL AND MINERAL RESOURCE SURVEYS - by the Mississippi Economic Council. . .

The latest figures published by the U. S. Bureau of Mines show Mississippi's mineral production for 1964 to be \$212.5 million. Preliminary figures for 1965 show the same amount. This was a decrease of 4 per cent from 1963. Mineral fuels (petroleum, natural gas and natural gas liquids) represented 87 per cent of the total value. A decrease in mineral fuels accounted for the drop in Mississippi's mineral production. The production of clays, sand and gravel, stone and other items actually increased several million dollars.

The figures on mineral production for 1964 emphasize areas in which the economy of our state can be benefited by the development of new mineral industries and the expansion of existing industries. Mississippi is ranked 21st among the states in mineral production. To maintain this good status much more research on the mineral resources along with the practical application of data obtained from this research is needed. The Mississippi Geological Survey has been instrumental in the establishment of several mineral industries. Through its investigations and publications the Mississippi Geological Survey continues to stimulate growth in the mineral industries.

Mineral resources of immediate importance to the economic development of Mississippi are those related to the local construction industry and national ceramic industry.

In all probability, the most important mineral deposits in the state, with the exception of petroleum and natural gas, are the many excellent clay deposits. Several of these deposits are presently being mined by ceramic raw material companies.

There is a continuing need for Mississippi counties to complete geological surveys. It is also necessary for the entire state to be mapped to further Mississippi's economic development.

Senate Bill 1512, passed by the 1966 Legislature, allows any Board of Supervisors, Board of Aldermen or governing authorities of any other governmental subdivision to expend from their general fund the estimated cost of geological and mineral resource surveys. Two or more governmental units may join in sponsoring such surveys.

These surveys are to be performed by the Mississippi Geological, Economic and Topographical Survey. Payments to the agency making the survey may be paid during the performance of the survey. The total of such payments shall not exceed 90% of the estimated total cost until after the survey is finally completed and formally accepted by the governing board or boards having the survey made.

Nearly two-thirds of the counties in Mississippi do not have a geological survey and over 2/3 do not have an up-to-date adequate survey.

The cost of these surveys has averaged \$25,000. This cost is relatively small investment in comparison to the results to be gained. Also, payments may be extended over the term of office of the governing board or boards having a survey made.

* * * * *

RATING OF COUNTY REPORTS . . .

An ideal county report, that is one most useful to present day needs, is an up-to-date report containing sections on (1) surface geology and materials of economic import, (2) testing of materials, (3) subsurface geology as related to oil and gas accumulations, and (4) groundwater geology. In relation to (1) and (2) above, materials are identified and measured as to quantity and quality and tested to determine uses. With

this in mind, each of the 30 county reports thus far published were graded on the basis of a point system as summarized below:

Surface geology	= 1 point)	5
Testing of materials	= 1 point)	points
Subsurface geology	= 1 point)	maximum
Groundwater geology	= 1 point)	value
Report less than 10 years old	= 1 point)	possible

Then each county report was rated A, B, or C on the following basis:

- A or A+ = 4 or 5 points
- B or B+ = 2 or 3 points
- C = 1 point

In general terms an "A" report is one that is adequate to present day needs, a "B" report is one that contains much useful information but is lacking in certain aspects, and a "C" report is inadequate to present day needs.

Results of county report ratings . . .

<u>A</u>	Attala Claiborne	Hinds Jasper
<u>B</u>	Adams Benton Calhoun Clay Forrest Ittawamba Kemper Lauderdale Madison Monroe Montgomery	Panola Pontotoc Prentiss Scott Tallahatchie Tippah Union Warren Winston Yazoo
<u>C</u>	Carroll Lafayette Lee	Marshall Webster Yalobusha

* * * * *

A resounding THANK YOU to George Isbell and committee for arranging the opening meeting of the 1966-67 year. Over 100 members enjoyed the evening of beer, bar-b-que and fellowship at the MP&L Lodge.

This first meeting was financed by generous contributions from the following individuals and companies:

Jack Daniel	Lyle Cashion Co.	Reading & Bates, Inc.
Bovaird Supply Co.	Larco Drlg. Co.	Seismograph Serv. Corp.
Gulf Coast Drlg. Co.	L. L. Ridgway	Teche Drlg. Co.
Engineering Service	Lane-Wells	E. L. Erickson
Neely Blue Print	Victor Smith	Schlumberger

Oursincere appreciation is given to these contributors for their interest and support.

By the close of the first meeting, the society had 195 members. At the present time membership stands at 254. At this time last year the society had 263 members. By the end of last year the membership had grown to 295 members. Equaling last year's membership should be our minumum goal. This, however, is going to require a united effort. Please encourage all qualified individuals to join the society and attend the interesting and worthwhile programs that are planned.

* * * * *

NEWS

BULLETIN

mississippi geological society



VOLUME XIV
Number 4

DECEMBER, 1966

M G S E X E C U T I V E C O M M I T T E E

President	Alan Jackson	Humble Oil & Ref. Co.
Vice-President	Julius M. Ridgway	First National Bank
Secretary	Joe B. Carl	Chevron Oil Co.
Treasurer	Ed D. Minihan	E. L. Erickson
Past President	Sankey L. Blanton	Sun Oil Co.

1 9 6 6 - 1 9 6 7 C O M M I T T E E C H A I R M E N

Entertainment	G. H. Isbell, Jr.	Isbell Oil Co.
Program	J. M. Pulliam	Sun Oil Co.
Nomenclature	V. L. Culbertson	Gammill-Stranahan
Publications	W. A. Rutherford	Sun Oil Co.
Projection	W. E. Moore	Chevron Oil Co.
Professional Registration	X. M. Frascogna	Independent
News Bulletin	S. C. Guy	Union Producing Co.
Boy Scouts	D. W. Layman	Victor Smith
Red Book Supplement	J. F. Fritz	Independent
GCAGS	M. L. Oxley	Lone Star Producing Co.
GCAGS Advertising	S. B. Spradley	Deposit Guaranty Bank

A.A.P.G. D I S T R I C T R E P R E S E N T A T I V E S

Term Expires 1967	R. B. Ross	Murphy Corporation
Term Expires 1967	M. L. Oxley	Lone Star Producing Co.
Term Expires 1968	D. W. Layman	Victor Smith

* * * * *

DECEMBER MEETING

Program: "A Study of the Jurassic Sediments in a Portion of Mississippi and Alabama"

Speaker: Marvin L. Oxley (Lone Star Producing Co.)*

Date & Place: December 12, 1966 - King Edward Hotel

Time: 5:30 PM Social Hour - 6:30 PM Dinner

For reservations: Call George Isbell (948-4881) or Riley Hagan (354-1671) before noon December 12

*Co-Authors: E. D. Minihan and J. M. Ridgway

PRESIDENTIAL MEMOS

by

Alan Jackson

The GCAGS convention in Lafayette, Louisiana, was great, and gave our group the impression that topping them will be tough. We got Marvin Horton elected Vice-President with the understanding that he will be advanced to the top job in 1967-68, and will start now working toward the 1968 convention to be in Jackson, Mississippi, for the first time. Marvin will need lots of help from all of us, so come forward bravely, men!!

I attended the Alabama Geological Society's Fourth Annual Field Trip December 2 and 3, and was most impressed. It was an excellent trip, well prepared, and with a good guidebook, but most important, was almost overwhelmed by the tremendous demand for reservations. It was supposed to be limited to 80 participants, but had to increase to over 100. This creates the suspicion that our society may be failing its members by neglecting those who have not been able to attend previous trips. We will discuss this further at one of our meetings soon.

The January meeting will be held in Natchez on the 11th, a Wednesday night. Howard Gould, AAPG distinguished lecturer, will speak on Sedimentary Facies and Their Importance in Oil Finding. The Natchez group promises a fine reception for us, with social hour preceding the dinner, compliments of the host group. Mark your calendar now, so it won't come as a surprise in next month's letter. Jack Henderson is handling arrangements, Armando Ricci, contacts, and "Buck" Gulmon, coordination with A.I.P.G.

The subject of incorporating our society is becoming one of deep concern, and a committee composed of Ed Minihan, Roy Worrell, Charley Barton and Gene Taylor, is investigating. They will report to the group at an early date, with their recommendations. If you have any ideas or experience in this field, they would appreciate your help.

The society has been asked to sponsor and support with time and men an Explorer Post for the local Boy Scout Council. Our Boy Scout Committee (Dee Layman, Harold Karges, and Jeff Jeffreys) is looking into this, and will report soon.

Merry Christmas, everyone.

The Jackson Geophysical Society will not meet during the month of December.

On January 16th, 1967, Dr. John D. Murr and Dr. R. R. Rosenkrans will present their paper "Modern Seismic Exploration of the Gulf Coast Smackover Trend." This is primarily a geologic dissertation backed up by some excellent seismic examples and should be of great interest to all geophysicists and geologists working in our area. This paper has received wide acclaim from those who have heard it in Shreveport in March and at the S.E.G. meeting in Houston this past November.

A number of pre-prints will be made available at the January meeting. If anyone is interested in obtaining a copy of this paper, please notify Jim Boydston (Union Producing Company) prior to January 16th so that enough copies will be on hand. Meeting place is the King's Inn - Time: 5:30 (social hour) - 6:30 (dinner).

The 1967 GCAGS Convention will be held in San Antonio October 25-26-27. We have chosen as our theme "Hidden Trends." To explain, we are primarily interested in papers dealing with possible producing trends, the structure or trapping mechanism of which are not discernible at what may have been considered adequate drilling depths a few years ago. Unconformities, buried faults, and deep porosity traps are a few examples we have in mind. We are soliciting papers of regional significance. It is to be hoped that should field papers be submitted, they should have regional significance.

We have a number of outstanding geological papers already confirmed and others are "working." At this time we have room for approximately 18 papers, depending on length. However, we would like to screen as many as possible. Two speakers with a very interesting non-geological subject are Mr. Dean McGehee, President of Kerr-McGee, who will speak on the subject of the changing energy picture and Mr. Lawrence O'Connor of the FPC will respond with the federal government's role in this changing picture. We feel that the speakers will be in good company.

Should members of the society wish to contribute a paper to the program, please write to me at the above address or our editor, Dr. John Sandidge, Alamo National Building, San Antonio, Texas 78205. Time is beginning to press us as we are anxious to have our program firmed by late January, 1967.

A. Wayne Wood
Program Chairman

* * * * *

Joseph B. Carl
Box 822
Jackson, Mississippi

Mississippi Geological Society
P.O. Box 422
Jackson, Mississippi



NEWS

BULLETIN

mississippi geological society



VOLUME XIV
Number 5

JANUARY, 1967

M G S E X E C U T I V E C O M M I T T E E

President	Alan Jackson	Humble Oil & Ref. Co.
Vice-President	Julius M. Ridgway	First National Bank
Secretary	Joe B. Carl	Chevron Oil Co.
Treasurer	Ed. D. Minihan	E. L. Erickson
Past President	Sankey L. Blanton	Sun Oil Co.

1 9 6 6 - 1 9 6 7 C O M M I T T E E C H A I R M E N

Entertainment	G. H. Isbell, Jr.	Isbell Oil Co.
Program	J. M. Pulliam	Sun Oil Co.
Nomenclature	V. L. Culbertson	Gammill-Stranahan
Publications	W. A. Rutherford	Sun Oil Co.
Projection	W. E. Moore	Chevron Oil Co.
Professional Registration	X. M. Frascogna	Independent
News Bulletin	S. C. Guy	Union Producing Co.
Boy Scouts	J. W. Layman	Victor Smith
Red Book Supplement	J. F. Fritz	Independent
GCAGS	M. L. Oxley	Lone Star Producing Co.
GCAGS Advertising	S. B. Spradley	Deposit Guaranty Bank
GCAGS Special Projects	L. H. Meltzer	Independent

JANUARY BUSINESS LUNCHEON

DATE: Tuesday, January 17, 1967

TIME: 12:00 Noon

PLACE: Coronet Room, King Edward Hotel

This meeting is necessary in order that members may discuss incorporation of the MGS as a non-profit-making organization and that report of committee chairmen may be heard. There are several matters that need the attention of the Society as soon as possible.

For Reservations: Call George Isbell (948-4881) or Riley Hagan (354-1671) before 5:00 PM, Monday, January 16.

*Mailed
Jan 14, 1967*

COMMITTEE FOR INCORPORATION
OF
MISSISSIPPI GEOLOGICAL SOCIETY

Ed Minihan
Charlie Barton
Roy Worrell
Gene Taylor

This committee met with the executive committee and Mr. Charles Bush (Attorney for the Mississippi Geological Society) and discussed the pros and cons of incorporation.

It is the recommendation of this committee that the society incorporate. The major reason for doing so is to absolve any single member or officer from any financial responsibility for the society actions.

There were no major reasons that the committee could find for not incorporating.

It will cost the society approximately \$150.00 to incorporate. Mr. Bush has agreed to this.

Ed Minihan

SMACKOVER TALK

The Jackson Geophysical Society will hold its January Meeting at the King's Inn on Monday, January 16th. Speakers will be Dr. John Marr and Dr. R. R. Rosenkrans, who will present a paper entitled "Modern Seismic Exploration of the Gulf Coast SMACKOVER TREND." Soc. 5:30 PM; dinner at 6:30 PM. Price is \$3.00.

For Reservations: Call Bill Albers (355-2390) or Jim Boydston (354-1671) before 5:00 PM on Friday, January 13th.

NATCHEZ MEETING

The regular January meeting of the Mississippi Geological Society was held in Natchez on Wednesday night, January 11. About 90 geologists and associate members from the Natchez area, Jackson, and Hattiesburg met at the Eola Hotel for social hour and dinner. Afterwards, Dr. Howard R. Gould, manager of the Stratigraphic and Structural Division of the Esso Production Research Company (Houston) spoke on "Sedimentary Facies and Their Importance in Oil Finding." This well-illustrated presentation brought home again the point stressed by speakers in the recent past - that examination of the rocks themselves and determination of depositional environments is the key to future oil finding.

We wish to express our appreciation to all the Natchez geologists for their hospitality, and especially to Jack Henderson, Armando Ricci and Don Devening for their hard work on this project. We hope that more Natchez area geologists will join the society, and that the Natchez meeting will become a regular feature on our yearly calendar.

Many thanks, too, go to Ned Phillips (Lane Wells) for sponsoring Mississippi's only mobile bar.

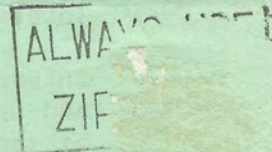
Jim Pulliam (Sun), our present program chairman, has been transferred to Amarillo, Texas. We wish him the best of luck in his new position and extend our thanks for the excellent programs we have had so far this year.

Where concealed by overlying sedimentary rocks, geologists may study the basement rocks by examining the cores and cuttings obtained from thousands of deep wells that reach or are drilled into the basement. The new map shows the location of these wells. Records of wells used in preparing the map are available from AAPG headquarters in Tulsa.

This map may be purchased by mail at \$1.00 per copy from AAPG headquarters, or from the U. S. G. S. distribution offices in Washington, D. C.; Denver, Colo.; and Fairbanks, Alaska.

AAPG members participating on the basement rock project committee were Peter T. Flawn, Chairman; Donald L. Blackstone, Jr., John F. Caley, Virgil B. Cole, Teodoro Diaz G.; Richard B. Dietrich, Roy W. Foster, Eduardo J. Guzman, Michel T. Halbouty, Jonathan H. Halsey, William C. Hayes, Paul L. Lyons, Edwin D. McKee, Peter H. Masson, Laurence L. Sloss, Merritt B. Smith, Alfred O. Woodford, George P. Woollard, Addison Young, and Douglas M. Kinney.

Mississippi Geological Society
P. O. Box 422
Jackson, Mississippi



Joseph B. Carl
Box 822
Jackson, Mississippi

FEBRUARY MEETING

DATE:: Monday, February 6, 1967

SPEAKERS: Mr. John Antoine
Dr. William Bryant
Department of Oceanography, Texas A & M

TOPIC: "Geology and Geophysics of the Gulf of Mexico"

The above gentlemen has been working with the Lamont Geological Observatory in connection with the Northwest Florida and Yucatan Peninsula portions of the Gulf. More information, regarding time and place of this meeting will be forthcoming.

GCAGS NOTES

Marvin Horton (Chevron), vice-president of the Gulf Coast Association of Geological Societies, has reported that Lincoln Warren of Gulf Oil Corporation has been appointed General Chairman of the annual convention to be held in the new Civic Auditorium in Jackson on October 23, 24 and 25, 1968.

Reservations for approximately 1200 hotel and motel rooms, as well as other facilities, either have been made or will be made very shortly. Since Lincoln will need assistance on about 20 different committees, virtually the entire membership of the Mississippi Geological Society will be required to work on some phase of the convention.

We believe that everyone will give 100% support to the effort and that we can have an excellent convention.

* * * * *

A "Basement Map of North America", published jointly by AAPG and the U. S. Geological Survey, went on the market January 3, it was announced nationally by the Department of the Interior.

In announcing the map, the Interior Dept. quoted AAPG President Michel T. Halbouty, of Houston, as follows:

"Contour lines on the map show the extent and depth of the sedimentary basins which provide the greatest opportunities for discovery of the 55 billion barrels of oil and 300 trillion cubic feet of gas required to maintain an adequate reserve position for the United States in the next 10 years."

U. S. G. S. scientists who contributed to the map said that the new map will also provide data for:

Calculating the volume of sedimentary deposits in basins from which estimates of the total amount of oil and natural gas that might have formed in these basins can be based.

Interpreting seismic records from nuclear explosions and earthquakes.

Interpreting geophysical measurements obtained in the study of the crust and upper mantle of the earth being conducted by Federal agencies, universities and international scientific committees.

The wall-size, 1:5,000,000 (1 inch = 80 miles) scale map provides information on basement rocks from northern Mexico (latitude 24 degrees north) to central Canada (latitude 60 degrees north). It was compiled over a period of 10 years.

The contoured surface of the basement is shown at 500-, 1000-, 2000-, and 4000-foot intervals; the deepest basins reach depths of more than 40,000 feet. The map also shows the nature of these rocks where exposed at the earth's surface in the Appalachian Mountains, over much of central and eastern Canada, in north central United States, in scattered mountain ranges of the Rocky Mountains, in the Sierra Nevada of California, and in the Coast Ranges of western United States and Canada.

NEWS

BULLETIN

mississippi geological society



VOLUME XIV
Number 6

MARCH, 1967

M G S E X E C U T I V E C O M M I T T E E

President	Alan Jackson	Humble Oil & Ref. Co.
Vice-President	Julius M. Ridgway	First National Bank
Secretary	Joe B. Carl	Chevron Oil Co.
Treasurer	Ed. D. Minihan	E. L. Erickson
Past President	Sankey L. Blanton	Sun Oil Co.

1 9 6 6 - 1 9 6 7 C O M M I T T E E C H A I R M E N

Entertainment	G. H. Isbell, Jr.	Isbell Oil Co.
Program	J. M. Pulliam	Sun Oil Co.
Nomenclature	V. L. Culbertson	Gammill-Stranahan
Publications	W. A. Rutherford	Sun Oil Co.
Projection	W. E. Moore	Chevron Oil Co.
Professional Registration	X. M. Frascogna	Independent
News Bulletin	S. C. Guy	Union Producing Co.
Boy Scouts	D. W. Layman	Victor Smith
Red Book Supplement	J. F. Fritz	Independent
GCAGS	M. L. Oxley	Lone Star Producing Co.
GCAGS Advertising	S. B. Spradley	Deposit Guaranty Bank
GCAGS Special Projects	W. W. Webber	Sun Oil Co.

MARCH MEETING

DATE: Monday, March 13, 1967

TIME: 5:30 PM Social Hour - 6:30 PM Dinner

PLACE: Kings Inn

SPEAKER: E. H. Rainwater, Consultant
Tenneco Oil Co., Houston, Texas

TOPIC: "Delta Formation"

For Reservations: Call George Isbell (948-4881)
or Riley Hagen (354-1671) before noon, March 13th

PRESIDENT'S PAGE

The following resolution must be voted on by more than half of our total membership, and accepted by more than two-thirds of those voting to be in compliance with the statutes of the State of Mississippi regarding incorporation as a non-profit organization. This is required by the Attorney General's office before we can have our charter accepted.

The post card ballot attached to this newsletter should be marked and returned before April 1, 1967. The ballot offers the choice of voting either "Yes" or "No" on the resolution below:

"WHEREAS, there exists a certain fraternal and charitable organization known as the Mississippi Geological Society, an unincorporated association, hereinafter referred to as the Association; and

WHEREAS, the membership of the Association has concluded that it is fitting, proper and in the best interest of the Association that it become incorporated as a non-profit and non-share corporation under the laws of the State of Mississippi; and

WHEREAS, the Association has met at a duly called special meeting on the third day of April, 1967, of which notice has been duly given, and has considered the matter of taking such action as may be appropriate and necessary for the incorporation of the Association; NOW, THEREFORE

BE IT HEREBY RESOLVED, that Julius M. Ridgway, Edward D. Minihan, and Sankey L. Blanton, each of whom is an adult member in good standing of the Association, be, and they are hereby authorized, directed and empowered to act as incorporators for the Association; to make application for a Charter of Incorporation as a non-profit, non-share corporation under the laws of the State of Mississippi applicable to non-profit corporations; to expend such funds of the Association as may be necessary in connection with the incorporation thereof; and to do and perform any and all other acts and things reasonable and necessary to accomplish the incorporation of the Association as a non-profit, non-share corporation having the name "Mississippi Geological Society, Inc."

As soon as we have complied with the statutes and get our Charter of Incorporation, we must then have a meeting and accept the Charter, adopt a set of By-Laws, elect new officers, then report to the State that we have met and organized as a corporation, with duly elected officers. We do not have to publish our Charter or By-Laws unless we wish to do so. All of these matters can be handled at the May election meeting and barbeque, and I hope to wrap the whole package up and deliver it to Charlie Bush at that time to complete the project. With your help and cooperation, it can be done.

NOTE: We are asking for your signature on the ballot solely to insure that no question arises as to the integrity of the vote, being handled by mail as it is.

ON THE BULLETIN:

If anyone is a member in good standing of the MGS and does not receive the News Bulletin regularly, please contact the Secretary and ascertain whether your name has been added to the mailing list. We don't mean to short-change anyone, and we certainly wish to keep the membership informed as to the meetings, projects, etc. Feel free also to contribute items to the Editor which you consider of interest to the MGS.

APRIL BUSINESS MEETING

DATE: Monday, April 3, 1967
TIME: 5:30 PM Social Hour - 6:30 PM Dinner
PLACE: King's Inn

This meeting is necessary in order that the following business be transacted:

1. Results of vote on incorporation of the Mississippi Geological Society to be announced and verified.
2. Report of Nominating Committee on candidates for office in 1967-68.
3. Nomination of officers from the floor.
4. Introduction to the membership of all candidates for office.
5. Honorary memberships will be conferred.

For reservations: Call George Isbell (948-4881) or Riley Hagen (354-1671) before noon, April 3rd.

ANNUAL SPRING DANCE AND GOLF TOURNAMENT

FRIDAY, APRIL 14

SPRING DANCE

Colonial Country Club
Ed Butler Band
Refreshments - 7:00 PM
Dinner - 8:30 PM
Door Prizes
\$6.00 per Person

GOLF TOURNAMENT

Colonial Country Club
18 Holes - Handicap Play
Prizes
MGS Members Only
Green Fee - \$4.40
Tee Off Time - 9:00 AM
No reservations on Golf Carts
First Come - First Served Basis

REPORT OF NOMINATING COMMITTEE

For President

Julius M. Ridgway

Manager, Petroleum Dept., First National Bank
B. S. (1956) Geological Engineering, University of Mississippi
MGS Activity:
Chairman, Photo Directory Committee, 1961-62
Chairman, Entertainment Committee, 1965-66
Vice President of MGS, 1966-67
Served on other committees

W. E. (Gene) Taylor

District Geologist, Union Producing Company
B. S. (1950) & M. S. (1951) Geology, Indiana University
MGS Activity:
Editor, News Bulletin, 1955-56
Chairman, Nomenclature Committee, 1963-64
Served on other committees

For Vice President

Tight Committee - To be released later

For Secretary

Kevin E. Cahill

Geologist, Placid Oil Company
B. A. (1955) & M. S. (1962) Geology, University of Iowa
MGS Activity:
Recently transferred to Jackson. Former member of
Shreveport Geological Society

Sam C. Guy

Geologist, Union Producing Company
B. S. (1959) & M. S. (1964) Geology, University of North Carolina
MGS Activity:
Editor, News Bulletin, 1966-67

For Treasurer

Walter T. Troegel, Jr.

Geologist, J. Willis Hughes
B. S. (1950), Geology, Louisiana State University
MGS Activity:
Chairman, Mississippi Advertising, GCAGS, Houston, 1965
Chairman, Program Committee, 1966-67
Served on other committees

W. Alan Rutherford

Geologist, Sun Oil Company
B. S. (1956), Geology, Southern Methodist University
MGS Activity:
Chairman, Publications Committee, 1966-67
Served on other committees

VISITING GEOLOGICAL LECTURERS AT THE UNIVERSITY OF SOUTHERN MISSISSIPPI

Through the assistance of the American Geophysical Union and the American Geological Institute, two visiting lecturers have been arranged for the Department of Geology at the University of Southern Mississippi in Hattiesburg during the Spring Quarter. The visitors will be on campus for classroom discussions, public lectures, informal conferences, for two days each.

March 22 - 23 (Wednesday - Thursday) - AGU Visiting Lecturer: Dr. Joseph D. Martinez, Director, Institute of Saline Studies, Louisiana State University.

Dr. Martinez will give a public lecture in the Science Building, University of Southern Mississippi, at 7:30 p.m. Wednesday, March 22, on the topic, "Geology and Technology of Salt," Dr. Martinez is the author of a number of publications on the studies of salt and mineral characteristics.

May 3 - 5 (Wednesday - Friday) - AGI Visiting Lecturer: Dr. Thomas G. Perry, Professor of Geology, Indiana University, the co-editor of Journal of Paleontology.

On Thursday evening, May 4, at 7:30 p.m., Dr. Perry will speak at the Science Building at the University of Southern Mississippi on the topic, "Paleontology: Its Growth, Needs, and Future." Dr. Perry is a world-known authority on Bryozoans and has authored some forty scientific papers, mostly on Paleontology.

The attendance of all members of the Mississippi Geological Society is most cordially invited. Details have not yet been arranged with regards to entertainment of these visitors, but further information will appear in next month's News Bulletin. For further details, write or call Professor Richard L. Bowen, Box 152 Southern Station, Hattiesburg, Mississippi 39401.

- - - - -

TECTONIC MAP OF THE GULF COAST

A map showing structure by contours, faults, salt domes, major structural axes, etc. for the area now coextensive with that of GCAGS member societies has been proposed by the Special Projects Committee of the GCAGS. Funds for the project would come from the GCAGS treasury. A maximum appropriation of \$6,000 would set a sale price of about \$4.00 per copy. Map scale would be 1:1,000,000.

Harold Hickey (New Orleans) has agreed to supervise the project, and Rex Hewitt (Merrill Harris) tentatively will serve as MGS representative. Approval is expected at the March business meeting in San Antonio.

- - - - -

SHOULD GCAGS BECOME A SECTION OF AAPG?

A recent legal opinion on the proposed affiliation of the GCAGS with AAPG as a separate section brought out the fact that, by such action, the GCAGS would surrender its autonomy regarding requirements for membership and holding of office and setting of geographical boundaries. One could only assume that the AAPG would not change the present status regarding boundaries.

If the affiliation was found to be unsatisfactory, the section could withdraw from the AAPG, but there would be no guarantee that a majority of the members of the section at that time would support re-establishment of an independent GCAGS.

AAPG CERTIFICATION PROCEDURES

- 1) Member requests application form from AAPG headquarters.
- 2) If fundamental qualifications are in order (Active member, four years since graduation, etc.), application form mailed.
- 3) Applicant completes form and requests letters from sponsors and from references.

- 4) Headquarters compiles application file, sending reminder letters regarding sponsors' and references' letters when necessary to applicant.
- 5) When complete, file is sent to District Representative for handling.
- 6) Following investigation, file forwarded with recommendation to Chairman of Board of Certification.
- 7) Application circulated by mail to five members of Board.
- 8) Board Chairman reviews application and transmits with recommendation to member of Executive Committee.
- 9) Executive Committee member approves application or circulates rejection recommendation to Executive Committee.
- 10) Approved application returned to Headquarters and name is published in next available Bulletin.
- 11) If no objection from membership after 60 days from publication date, applicant is informed and certificate is forwarded.

Sponsors testify to the accuracy of applicant's educational and experience record.

References testify to the character, integrity, and business responsibility of the applicant.

District Representatives report on applicant's professional reputation for technical aptitude and moral responsibility on the basis of inquiries to his professional colleagues - other than sponsors - who file formal statements and should not be asked to repeat opinions already on record.

The April 1965 Bulletin (p. 486) lists qualifications and procedures. The Executive Committee requires eight years of experience (or advanced academic equivalents) after receipt of a bachelor's degree in geology - one year more than the minimum of seven originally set. Above procedures may take up to six months for completion as principal handling is by volunteers who have their own daily professional routines to maintain.

- - - - -

NEWS RELEASE - American Association of Petroleum Geologists - February 2, 1967

HOBBS, N. M. -- Addressing the Southwestern Federation of Geological Societies and regional American Association of Petroleum Geologist meeting, AAPG president Michel T. Halbouty today (Thursday, Feb. 2) sought to bring oil company management and geologists closer together for an "exploration explosion."

To petroleum geologists, he urged: "Come out of hibernation and take a look at the industry as a whole."

To both major and independent oil company management, he recommended more attention to: "Proper selection, use and direction of geologists and supervisors."

To them both, he forecast: "The industry must find more petroleum in the next 20 years than it has produced in the last 105 years."

The address was in keeping with Mr. Halbouty's campaign as AAPG head to achieve more mutual understanding and respect between top management and professional geologists, and to awaken people in general to the fact that domestic oil reserves must be increased by renewed exploration efforts--"and more ingenuity and boldness in seeking new domestic reserves."

He chided geologists for allowing other industry disciplines to partly replace the geologist as an economist in recommending prospects for drilling.

"The geologist must begin thinking about oil exploration as a business for making money," said Mr. Halbouty. "He must realize that his main job is to contribute towards profits for his organization and that the sure methods of the past may bring sorry results today."

Management was also advised to be more selective in use of costly technical services ... "Data gluttony" (seismic, for example) is costly and often confuses a good geological picture."

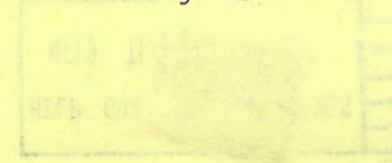
He urged management to demand "more thorough economic evaluation of all plays.... to upgrade the total exploration effort and keep the profit possibilities on everyone's mind.

"Decisions for or against prospect selection" he emphasized, "should be based on the amount of profit possible from a particular prospect or play relative to the risk and investments involved."

He asked management "to be certain that the policies and philosophies of exploration which it directs do not discourage creativity in ideas or dampen the willingness of a geologist to 'stick out his neck' in support of his ideas for fear of getting it cut off."

Predicting that oil and gas of the future will be found by well-rounded teams composed for geologists, geophysicists, paleontologists, petroleum engineers, chemists, scouts and landmen, Mr. Halbouty said he hoped the leaders of such teams will be geologists.

"My hope is based on the fact that the modern search is favorable to the geologist," he asserted. "But the geologist can't be the captain unless he can lead. And he can't lead unless he can think. And his thinking must be sound, but bold. He must be creative in the fullest meaning of the word. It is for the geologist to decide whether or not he will lead in this new conception of the exploration teamhe is best equipped.... his talents are the most needed....his challenge is the greatest, and so is his opportunity."



Department was also advised to be more selective in use of costly technical services
... (scientific, for example) in costly and often unproductive ways.

He urged management to demand more thorough economic evaluation of all plays...
to upgrade the total exploration effort and keep the profit possibilities on
everyone's mind.

"Decisions for or against prospect selection" be emphasized, should be based
on the amount of profit possible from a particular prospect or play relative to

Jackson, Mississippi
Box 822

Joseph B. Carl
The geologist is not discouraged creatively in these or deeper the willing
ness of a geologist to "stick out his neck" in support of his ideas for fear of
getting it cut off.

... that will lead to the future will be found by well-founded teams
comprising geologists, geophysicists, geologists, petroleum engineers,
chemists, accountants and lawyers. Mr. McKinley said he hoped the leaders of such teams
will be geologists.

... based on the fact that the modern search is favorable to the geologist.
... But the geologist can't be the captain unless he can lead. And he
can't lead unless he can think. And his thinking must be sound, but bold. He
must be creative in the fullest meaning of the word. It is for the geologist to
decide whether or not to go in and in this new conception of the exploration
... his talents are the key to the success of the operation.

Mississippi Geological Society
P. O. Box 422
Jackson, Mississippi



NEWS

BULLETIN

mississippi geological society



VOLUME XIV
Number 7

APRIL, 1967

MGS EXECUTIVE COMMITTEE

President	Alan Jackson	Humble Oil & Ref. Co.
Vice-President	Julius M. Ridgway	First National Bank
Secretary	Joe B. Carl	Chevron Oil Co.
Treasurer	Ed. D. Minihan	E. L. Erickson
Past President	Sankey L. Blanton	Sun Oil Co.

1966 - 1967 COMMITTEE CHAIRMEN

Entertainment	G. H. Isbell, Jr.	Isbell Oil Co.
Program	J. M. Pulliam	Sun Oil Co.
Nomenclature	V. L. Culbertson	Gammill-Stranahan
Publications	W. A. Rutherford	Sun Oil Co.
Projection	W. E. Moore	Chevron Oil Co.
Professional Registration	X. M. Frascogna	Independent
News Bulletin	S. C. Guy	Union Producing Co.
Boy Scouts	D. W. Layman	Victor Smith
Red Book Supplement	J. F. Fritz	Independent
GCAGS	M. L. Oxley	Lone Star Producing Co.
GCAGS Advertising	S. B. Spradley	Deposit Guaranty Bank
GCAGS Special Projects	W. W. Webber	Sun Oil Co.

ANNUAL SPRING DANCE AND GOLF TOURNAMENT

FRIDAY, APRIL 14

SPRING DANCE

Colonial Country Club
Ed Butler Band
Refreshments - 7:00 P.M.
Dinner - 8:30 P.M.
Door Prizes
\$6.00 per Person

GOLF TOURNAMENT

Colonial Country Club
18 Holes - Handicap Play
Prizes
MGS Members Only
Green Fee - \$4.40
Tee Off Time - 9:00 AM
No reservations on Golf Carts
First Come - First Served Basis

*Tickets may be purchased from:
Riley Hagan (Union Prod.)
Marvin Oxley (Lone Star)
Julius Ridgway (First National)
George Isbell (Independent)

*Players are requested to
tee off before 1:00 P.M.

REPORT OF NOMINATING COMMITTEE

FOR VICE PRESIDENT

Edward D. Minihan
Geologist, E. L. Erickson
B. S. (1955), Geology, Oklahoma State University
MGS Activity:
Treasurer, 1966-67
Served on other committees

Roy A. Worrell
Senior Geologist, Gulf Oil Corporation
B. S. (1951), Geology, University of Oklahoma
MGS Activity:
Program Chairman 1965-66
Served on other committees

* * * * *

The Louisiana State University School of Geology, in cooperation with other L.S.U. groups, is sponsoring separate conferences on abnormal subsurface pressures, geology and technology of Gulf Coast salt, and recent-ancient deltaic sediments.

1. CONFERENCE ON ABNORMAL SUBSURFACE PRESSURES, Friday, April 28, co-sponsored by L.S.U. Department of Petroleum Engineering; seven industrial, government and University speakers will discuss engineering and geological aspects of abnormal subsurface pressure zones, including their occurrence, characteristics, hydrodynamics, detection methods, and producing mechanisms; associated topics are osmotic properties, consolidation, early diagenesis and diapirism of clays; information is available from Professor William Hise, Department of Petroleum Engineering, Conference Coordinator, telephone 388-5215, Area Code 504.

2. SYMPOSIUM ON GEOLOGY AND TECHNOLOGY OF GULF COAST SALT, Monday - Wednesday, May 1-3, co-sponsored by L.S.U. Institute for Saline Studies, in honor of Dr. Richter-Bernberg, visitor from West Germany Geological Survey. Nine government, industry and university panelists will discuss tectonic setting, depositional history, mechanical properties, mode of intrusion, relationship to surrounding sediments, caprock, and technological utilization of salt diapirs, with emphasis on those of the Gulf basin on Monday. Tuesday will be devoted to an organized discussion and an optional salt mine trip is scheduled Wednesday. Information is available from Professor D. H. Kupfer, Department of Geology, Symposium Coordinator, telephone 388-3011. Area Code 504.

3. SEMINAR ON RECENT AND ANCIENT DELTAIC DEPOSITS, Saturday-Wednesday, May 20-24, co-sponsored by L.S.U. Coastal Studies Institute; comparison of Mississippi delta and ancient (Carboniferous) delta sediments will emphasize relationships between depositional environment and sedimentary structures revealed by radiography and other techniques; seminar begins on Saturday with flight over Mississippi delta and closes Wednesday with surface trip by bus; limited enrollment of college professors in the field of sedimentology; this conference will be repeated for industrial geologists on sufficient demand; information available from Dr. James M. Coleman, Coastal Studies Institute, Seminar Director, telephone 388-2327; other leaders are John C. Ferm, Sherwood M. Gagliano, William G. McIntire, James P. Morgan.

* * * * *

The Gulf Coast Association of Geological Societies Executive Committee met in San Antonio, Texas on March 3, 1967. Marvin Horton and Lincoln Warren represented the Mississippi Geological Society.

The Executive Committee approved without dissent the \$6,000 needed by the Tectonic Committee for publishing a Tectonic Map of the Gulf Coast under the chairmanship of Harold Hickey in New Orleans.

The Lafayette Society reported on the financial results of the meeting in October. The financial report indicates cash assets of about \$35,000, so the society remains very healthy from a financial aspect.

Affiliation with the AAPG as a section was then discussed in considerable detail. Mr. Leslie Bowling, one of the founding members of the GCAGS, gave a report on the

early years of the society. The GCAGS tried in 1952 to become a section of the AAPG and it was denied. Beginning in 1957, however, it was designated as the sectional meeting of the AAPG. Mr. Bowling felt that unless AAPG permitted the GCAGS full autonomy, we should not join.

Mr. Mike Halbouty, President of the AAPG then spoke and read the following resolution adopted unanimously by the AAPG Executive Committee:

"That the American Association of Petroleum Geologists formally invite the Gulf Coast Association of Geological Societies to become a section of the AAPG, and to state expressly that, as a section of AAPG, GCAGS may retain its present name and have exclusive authority to maintain its freedom and its autonomy related to scheduling of meetings, finances, publications, selection of speakers, and other pertinent matters; furthermore, the geological boundaries now established by GCAGS are recognized and accepted by AAPG, and any change in these boundaries must be initiated by GCAGS; and further, that GCAGS has the right to withdraw as a section at any time."

The President of the GCAGS then asked Mr. Bowling to frame a constitutional change to be submitted to the member societies as soon as possible to determine if they desired the GCAGS to become a section of the AAPG.

In addition the GCAGS Executive Committee voted to hold the 1969 meeting in Miami and the 1970 meeting in Shreveport.

QUOTE FROM AAPG ON 1966 EXPLORATORY DRILLING

"Since 1950, the number of new-field wildcats drilled for every discovery of a new field of sufficient size to return a profit on the operator's investment has ranged between 36 and 59 wildcats. Prior to 1950, the ratio was between 25 and 33 new-field wildcats drilled for each significant discovery."

The Committee on Statistics of Drilling estimates that only 171 (2.8%) of the 1966 discoveries may be of significant size. In 1965 a total of 397 oil fields and 234 gas or condensate fields were found in the 6,175 wildcat attempts, but only 134 (2.2%) were believed significant.

TULSA, OKLA.---The American Association of Petroleum Geologists today announced the formation of a task group to develop a Standard Stratigraphic Coding system for computer use by geologists.

The task group is to be known as the Committee on Standard Stratigraphic Coding, and will function under the chairmanship of Dr. George V. Cohee, Chairman, Geologic Names Committee, United States Geological Survey.

During the past several years an increasing number of organizations in the U. S. and Canada have begun using several forms of geologic terminology and coding systems. These organizations include the various well data systems, university and research groups, and the AAPG Committee on Statistics of Drilling.

The AAPG recognizes the need for some national standards to be established before the quantity of geologic data which has been placed in machineable form becomes too great to allow a standardization of coding procedures. It is hoped that the coding standards which are established can be followed by all the organizations encoding geologic data at the present time, and other organizations which enter the field in the future. Therefore, the formation of this AAPG committee is to recommend a Standard Stratigraphic Code for adoption by all entities. (Halbouty)

The AAPG Standard Stratigraphic Coding Committee is composed of:

- Dr. George V. Cohee (Chairman) United States Department of the Interior, Geological Survey, Washington, D. C.
- Mr. Richard E. Anderson Canadian Stratigraphic Service, Ltd., Calgary, Alberta, Canada
- Dr. L. I. Briggs, Jr. University of Michigan, Ann Arbor, Michigan
- Mr. J. B. Chase Sinclair Oil & Gas Co., Tulsa, Oklahoma
- Mr. Jack N. Decker Humble Oil & Refining Co., New Orleans, La.
- Mr. Henry W. DeJong Sinclair Oil & Gas Co., Houston, Texas
- Mr. Ed L. Dillon Shell Oil Co., Houston, Texas
- Mr. R. R. Knapp Standard Oil Co., of California, La Habra, Cal.

Dr. Frank E. Kottlowski	New Mexico School of Mines, Socorro, New Mexico
Mr. Bob Meader	Marathon Research, Littleton, Colorado
Dr. Daniel F. Merriam	Kansas Geological Survey, Lawrence, Kansas
Mr. R. F. Meyer	U. S. Department of the Interior, Washington, D. C.
Mr. Wayne E. Moore	Pan American Petroleum Corp., Calgary, Alberta, Can.
<u>Mr. Wayne Elden Moore</u>	<u>Chevron Oil Co., Jackson, Mississippi</u>
<u>Dr. W. S. Pike, Jr.</u>	<u>Shell Oil Co., New Orleans, La.</u>
Dr. Russell Smith	University of Nebraska, Lincoln, Nebraska

This committee will work in cooperation with the AAPG Committee on Stratigraphic Correlations, the American Commission on Stratigraphic Nomenclature, and various API committees to standardize the coding of stratigraphic data in connection with computer applications.

TULSA, OKLA. --- The American Association of Petroleum Geologists, world's largest geological society, has announced the establishment of an AAPG Foundation for the purpose of broadening and accelerating the advancement of its objectives.

The Foundation, created for the first time in the AAPG's half-century of history, will be administered by three trustees to be appointed by the Association's executive committee.

According to the articles of incorporation approved by the Association's current executive committee, AAPG Foundation funds will be used for:

1. The conduct of research, both directly and through the promotion, assistance, encouragement, support and furtherance of studies and research in the field of geology and in sciences related thereto;
2. The dissemination of information relating to geology and related fields, through lectures, seminars, publications, educational courses, teaching aids and by other means and materials;
3. To carry on programs of continuing education in geology and related studies;
4. To assist in career guidance to persons interested in geology or related fields;
5. To assist public and private schools (elementary and secondary) and colleges and universities and technical schools in teaching and education in the field of geology and related fields;
6. To provide scholarships, prizes, awards, gifts, educational loans and other kinds of support to assist or reward students engaged in the study of geology or related fields;
7. To establish fellowships or "chairs" in colleges and universities in order to further education and knowledge in the field of geology and related fields;
8. To work with and support (including contributions from the Foundation) other organizations with similar objectives which are in themselves tax-exempt educational or scientific organizations under the Internal Revenue Code.

Mississippi Geological Society
P. O. Box 422
Jackson, Mississippi



Joseph B. Carl
Box 822
Jackson, Mississippi

NEWS

BULLETIN



mississippi geological society

VOLUME XIV
Number 8

MAY, 1967

M G S E X E C U T I V E C O M M I T T E E

President	Alan Jackson	Humble Oil & Ref. Co.
Vice-President.	Julius M. Ridgway.	First National Bank
Secretary	Joe B. Carl.	Chevron Oil Co.
Treasurer	Ed. D. Minihan	E. L. Erickson
Past President.	Sankey L. Blanton.	Sun Oil Co.

1 9 6 6 - 1 9 6 7 C O M M I T T E E C H A I R M E N

Entertainment	G. H. Isbell, Jr.	Isbell Oil Co.
Program	J. M. Pulliam	Sun Oil Co.
Nomenclature.	V. L. Culbertson	Gammill-Stranahan
Publications.	W. A. Rutherford	Sun Oil Co.
Projection.	W. E. Moore	Chevron Oil Co.
Professional Registration	X. M. Frascogna.	Independent
News Bulletin	S. C. Guy.	Union Producing Co.
Boy Scouts	D. W. Layman	Victor Smith
Red Book Supplement	J. F. Fritz.	Independent
GCAGS	M. L. Oxley.	Lone Star Producing Co.
GCAGS Advertising	S. B. Spradley	Deposit Guaranty Bank
GCAGS Special Projects.	W. W. Webber	Sun Oil Co.

ANNUAL ELECTION MEETING

For Reservations:
Call -
George Isbell
948-4881
Before noon,
Monday, May 15th

* BEER *
* BARBEQUE *
* GOOD FELLOWSHIP *

For Reservations:
Call -
Riley Hagan
354-1671
Before noon,
Monday, May 15th

PLUS

ELECTION OF OFFICERS FOR 1967-68!!

DATE: Monday, May 15, 1967

PLACE: Mississippi Power & Light Lodge

TIME: 5:00 P.M. until --

Immediately following the meeting there will be a seminar on the rules of permutation, combination and probability. Capable instructors will be on hand for discussion and demonstration. Nominal fees may be required by individual instructors.

VISITING GEOLOGICAL LECTURER AT THE UNIVERSITY OF SOUTHERN MISSISSIPPI

May 3 - 5 (Wednesday - Friday) - AGI Visiting Lecturer: Dr. Thomas G. Perry, Professor of Geology, Indiana University, the co-editor of Journal of Paleontology.

On Thursday evening, May 4, at 7:30 p.m., Dr. Perry will speak at the Science Building of the University of Southern Mississippi on the topic, "Paleontology: Its Growth, Needs, and Future." Dr. Perry is a world-known authority on Bryozoans and has authored some forty scientific papers, mostly on Paleontology.

The attendance of all members of the Mississippi Geological Society is most cordially invited. For further information, write or call Professor Richard L. Bowen, Box 152 Southern Station, Hattiesburg, Mississippi.

The Executive Committee of the Mississippi Geological Society, meeting in Jackson on April 19, 1967, unanimously recommended that the Constitution and Bylaws of the Society be amended as shown in the following. The proposal to adopt these Bylaws will be included on the ballot presented to the membership at the May 15, 1967 election meeting.

Additions are indicated by underlining, and deletions are enclosed in parentheses.

(delete CONSTITUTION)

BYLAWS

OF

THE MISSISSIPPI GEOLOGICAL SOCIETY, INC.

(delete As Re-Written and
Adopted Feb. 22, 1960)

ARTICLE I - NAME AND AFFILIATION

The name of the Society shall be "The Mississippi Geological Society, Inc." It shall be affiliated with the American Association of Petroleum Geologists.

ARTICLE II - OBJECTS

The objects of this Society are: (1) the stimulation of interest in geology and related sciences; (2) the encouragement of scientific research among members; (3) the promotion of social and professional fellowship among members; and (4) the dissemination and discussion of geological information; (5) the Society shall not be operated for profit and no financial benefits of any nature shall ever accrue to the members thereof.

ARTICLE III - MEMBERSHIP

Section I: The membership of this organization shall be made up of active members, associate members, and honorary members.

Section II: In order to be eligible for active membership, an applicant shall: (1) Have a degree in geology or an allied science from a recognized college or university and shall be directly engaged in the application of geology, or shall (2) have been primarily engaged in geological work during at least the preceding five years. These requirements shall not apply to any member as of this date - if he were a charter member of the Society as reflected by June 16, 1940, membership list.

Section III: Any person shall be eligible to associate membership who is actively engaged in geological or related work or the study of geology. Associate Members shall not be eligible (delete to vote), to hold elective office, or to sponsor applicants for active or associate membership, but shall have all other rights and privileges enjoyed by active members. If an associate member attains eligibility for active membership, he may apply for transfer to active membership.

Section IV: Honorary Members. The (delete Executive Council) Board of Directors may from time to time elect, by unanimous vote of the (delete Council) Board, as honorary members of the Mississippi Geological Society, persons who are present or past members that have contributed distinguished services to the Society. It is not intended nor desirable that there should be a large or promiscuous number of such members, but that it should be considered an honor to receive from the Society an

honorary membership as a token award in appreciation and esteem for meritorious services. Honorary members shall not be required to pay dues and may enjoy all privileges of the Society.

Section V: Any member may be suspended or dropped from the membership of the Society for misconduct or actions harmful to the Society; action to be taken at the discretion of the (delete Executive Council) Board of Directors by a majority vote of the (delete Council) Board. Such charges shall be made in writing to the member, who may protest such charges within 30 days from the date which they were mailed. After the 30 days have expired, the (delete Executive Council) Board of Directors may expel such member by a majority vote of the (delete Council) Board. The member may resign before the end of the 30 days, at which time the foregoing proceedings shall automatically terminate.

ARTICLE IV - OFFICERS AND (delete EXECUTIVE COUNCIL) BOARD OF DIRECTORS

Section I: Officers shall be a President, a Vice President, a Treasurer, and a Secretary. These, together with the Past President (delete and the Chairman of the Program Committee), shall constitute the (delete Executive Council) Board of Directors. If the Past President for any reason shall be unable to serve as a member of the (delete Executive Council) Board of Directors, the President shall fill the vacancy by the appointment of the next available preceding Past President. No officer shall succeed himself in office, with the exception of the Vice President who after having succeeded to the Presidency due to a vacancy in that office, may upon election, serve a full term as President.

Section II: The duties of the President shall be to preside at all meetings, maintain order, call special meetings subject to the approval of the (delete Executive Council) Board of Directors, appoint all committees, and shall delegate members to represent the Society. He may at his option serve on any committee. He shall, together with the Treasurer, sign all checks, drafts, contracts, and all other obligations of the Society. In the temporary absence of any other officer of the Society, he shall have the power to appoint a member to assume duties pro tempore.

Section III: The Vice President shall assume the office of the President in case of a vacancy from any cause in that office, and shall assume the duties of President in case of the absence or disability of the latter.

Section IV: The Treasurer shall assume the duties of the President in case of the temporary absence of both the President and Vice President. He, together with the President, shall have charge of the financial affairs of the Society. He shall submit an annual report and inventory at the last meeting before the summer recess, and any other special reports upon the request of the President. He shall receive and disburse all monies; however, expenditures in excess of one hundred dollars shall be made only with the approval of the (delete Executive Council) Board of Directors. During the month of (delete June) August, the Treasurer shall send statements or notices of dues to all members, except honorary members.

Section V: The Secretary shall assume the duties of the President in case of the temporary absence of all the other officers. It shall be the duty of the Secretary to fully and permanently record the minutes of all the meetings of the Society and all meetings of the (delete Executive Council) Board of Directors. He shall prepare and distribute by mail not later than October 15 a membership list and a list of committee assignments. It shall be his duty to prepare and keep in his possession at every meeting a copy of the Constitution and Bylaws with all amendments thereto. He shall be responsible for all secretarial duties connected with the affairs of the Society. He shall prepare all ballots and papers necessary to any Society election.

Section VI: In addition to their other duties the (delete Executive Council) Board of Directors shall make or cause to be made an annual check and review of the Society's records prior to the last meeting of the year.

ARTICLE V - ELECTIONS

Section I: General Elections

A. Nominating Committee. A Nominating Committee composed of five (5) members shall be appointed by the (delete Executive Council) Board of Directors 30 days before the first regular meeting in April. No incumbent officer shall serve on this Committee. The Committee shall be discharged after presenting its slate of candidates to the Society.

B. Nominations. Nominations for officers of the Society shall be made by the Nominating Committee and a slate of candidates announced at the first regular meeting in April. Two or more candidates shall be nominated for each office by the Committee. Additional candidates for each office may be nominated from the floor at this meeting

or at the last regular meeting in April. A biographical sketch of each candidate shall be published and mailed to each member of the Society at least two weeks prior to the election, or given verbally at the regular meeting just prior to the election.

C. Voting. Election of officers shall be held each year at the last regular meeting of the Society before the summer recess. Voting shall be conducted by secret ballots prepared in advance by the Secretary. A majority vote of the members present and voting shall decide the election. In case no candidate receives a majority vote on the first ballot, the candidate with the least number of votes shall be stricken from the ballot and another poll taken. This procedure shall be continued until a candidate receives a majority vote. Any (delete active) member who cannot be present at the election meeting may upon request obtain an absentee ballot from the Secretary of the Society. The Secretary shall deliver all sealed ballots to the Election Judges at the election meeting. Only (delete active) paid-up members and Honorary Members shall be eligible to vote in any election.

Section II: Special Elections

A. A special election shall be held at the next meeting subsequent to the permanent vacancy of any office ~~excepting the President~~. The sole purpose of such special election shall be to fill the vacated office, or offices. Prior written notice to the membership will be given regarding the special election.

B. The (delete Executive Council) Board of Directors shall appoint a Nominating Committee composed of five (5) members who shall select two (2) or more candidates for the office to be filled. No incumbent officer shall serve on this committee. Nominations may also be made from the floor. The committee shall be discharged after presenting its slate of candidates to the Society.

C. Voting. Nomination and election of officers shall be held at the same meeting of the Society. Voting shall be conducted by secret ballots. A majority vote of the members present and voting shall decide the election. In case no candidate receives a majority vote on the first ballot, the candidate with the least number of votes shall be stricken from the ballot and another poll taken. This procedure shall be continued until a candidate receives a majority vote.

Section III: Election Judges

Prior to the balloting at any election, the President shall appoint three Election Judges from the membership who are not incumbent officers or candidates for any office of the Society. These Judges are charged with the secret counting of the ballots and announcing the names of those elected. Election Judges will be appointed for each election.

(delete ARTICLE VI - AMENDMENTS)

This Constitution may be amended by a three-fourths vote of the members present at any regular meeting, provided notice of the proposed amendment has been presented in writing at the last previous regular meeting, and inserted in the minutes, and provided notice is given all members by mail prior to the meeting at which the vote is taken.)

(delete BYLAWS)

(delete OF)

(delete MISSISSIPPI GEOLOGICAL SOCIETY)

(delete I. EXECUTIVE COUNCIL)

ARTICLE VI - BOARD OF DIRECTORS

The (delete Executive Council) Board of Directors, in addition to its duties specified in the Constitution, shall meet at least monthly throughout the entire calendar year and shall be the governing body of the Society. A quorum of this (delete Council) Board shall consist of a minimum of four members. To conduct business, a majority vote of those present is necessary.

(delete II) ARTICLE VII - STANDING COMMITTEES

As soon as practicable after taking office the President shall appoint the Chairmen of eight standing committees and after consultation with these Chairmen shall appoint the Committee Membership. These committees shall be as follows:

- A. A.A.P.G. Committee
- B. Entertainment Committee
- C. Field Trip Committee
- D. Nomenclature Committee
- E. Program Committee
- F. Projection Committee
- G. Publications Committee
- H. Publicity Committee

A. The A.A.P.G. Committee shall coordinate the efforts and activities of the Mississippi Geological Society with the American Association of Petroleum Geologists. If any member or members of this Society is a District Representative or holds a National Office in the A.A.P.G., such member or members shall automatically serve on this committee.

B. The Entertainment Committee shall provide a suitable place for each meeting of the Society. If a luncheon or dinner is served in connection with the meeting, this Committee shall make all necessary arrangements including reservations. This Committee shall plan and coordinate any other social function of the Society.

C. Field Trip Committee shall make and supervise the general plans for field trips which may be held from time to time at the discretion of the Society. This Committee shall avail themselves of the services of any other Committee of the Society whenever it is deemed necessary.

D. The Nomenclature Committee shall consist of a minimum of five members. Its membership shall include the Vice President of the Society and whenever possible, one member of the Mississippi Oil Scouts Association. This Committee shall promptly name any new oil and/or gas fields, reservoirs, salt domes, and any other geologic feature they deem advisable in the State of Mississippi. The Vice President will be responsible in seeing that all interested operators are contacted prior to the naming of any new discovery. After naming any new discovery in the state, the Committee shall immediately notify the Secretary of the Society and such publications and regulatory bodies as they deem necessary. The Secretary of the Society will enter any new names in the minutes and announce them at the next meeting of the Society.

E. The Program Committee. (delete The Chairman of this Committee shall serve as a member of Executive Council.) The Program Committee shall secure speakers and lecturers to present topics of interest to the Society, shall make all necessary arrangements for presentation, and this Committee shall notify sufficiently in advance all other Committees whose services will be required to implement the meeting.

F. The Projection Committee shall provide and operate all projection and sound equipment necessary to any presentation before the Society.

G. Publications Committee. The Publications Committee shall be responsible for the storage, sale and handling of all publications of the Society. The Publications Committee shall keep the necessary records and submit a written monthly report with all monies collected to the Treasurer.

H. The Publicity Committee, upon notification of the Chairman of the Program Committee, shall prepare and distribute to all members in advance notice of all meetings. This Committee shall as soon as practicable contact all new geologists in this area who are eligible for membership in the Society. This Committee shall secure as much favorable publicity as possible for the Society and the profession of geology.

(delete III.) ARTICLE VIII - SPECIAL COMMITTEES

The President shall appoint the Chairmen of special committees and, after consultation with these Chairmen, shall appoint the membership thereof. These special committees shall specifically include those with technical assignments designed to further the objectives of this Society as stated in Article II of the Constitution.

(delete IV.) ARTICLE IX - DUES AND ASSESSMENTS

The annual dues of Active and Associate Members shall be Five Dollars (5.00), payable at the beginning of each fiscal year. The fiscal year of the Society shall be from June 1st through May 31st.

Special assessments may be levied at any meeting by a majority vote of the members present, provided advance notice of the proposed assessments has been made to all members of the Society by mail.

Members who are in arrears in dues and/or special assessments on October 1st shall be dropped from the list of members. Any former member may be reinstated by payment of

any outstanding dues and obligations which were incurred prior to the date when he ceased to be a member of the Society, and by payment of dues for the fiscal year in which he requests reinstatement.

(delete V.) ARTICLE X - MEETINGS

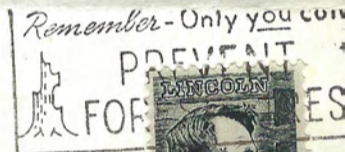
A. Regular Meetings. Regular meetings shall be held (delete on the first and third Thursdays of) each month from October to May, inclusive. Regular meeting dates may be changed or cancelled at the discretion of the (delete Executive Council) Board of Directors.

B. Special Meetings. Special meetings may be called from time to time to conduct business or for any other purpose deemed advisable by the (delete Executive Council) Board of Directors, due notice having been given in advance.

(delete VI.) ARTICLE XI - AMENDMENTS

Amendments to the Bylaws may be made by a two-thirds majority of the (delete active) membership voting by mailed ballots, to be supplied and mailed by the Society to the (delete active) membership, provided a motion to amend said Bylaws has been passed at a regular business meeting by a majority of the (delete active) members present at said meeting. Returned ballots must be post marked within 30 days of the mail out day in order to be counted.

Mississippi Geological Society
P. O. Box 422
Jackson, Mississippi



Joseph B. Carl
Box 822
Jackson, Mississippi

Motion to amend Section I of Article IV of the ByLaws of the Mississippi Geological Society, Inc. as adopted May 15, 1967 to change Section I which reads

"Officers shall be a President, a Vice President, a Treasurer, and a Secretary. These, together with the Past President shall constitute the Board of Directors. If the Past President for any reason shall be unable to serve as a member of the Board of Directors, the President shall fill the vacancy by the appointment of the next available preceding Past P^resident. No officer shall succeed himself in office, with the exception of the Vice President who after having succeeded to the Presidency due to a vacancy in that office, may upon election, serve a full term as President."

to read

"Officers shall be a President, a First Vice President, a Second Vice President, a Treasurer and a Secretary. These, together with the Past President shall constitute the Board of Directors. If the Past President for any reason shall be unable to serve as a member of the Board of Directors, the President shall fill the vacancy by the appointment of the next available preceding Past President. No officer shall succeed himself in office, with the exception of the First Vice President who after having succeeded to the Presidency due to a vacancy in that office, may upon election, serve a full term as President."

and to amend Section III of Article IV which reads

"The Vice President shall assume the office of the President in case of a vacancy from any cause in that office, and shall assume the duties of the President in case of the absence or disability of the latter."

to read

"Section III (a): The First Vice President shall assume the office of the President in case of a vacancy from any cause in that office, and shall assume the duties of the President in case of the absence or disability of the latter. He shall be at the disposal of the President for any duty necessary to the proper functioning of the Society.

(b): The Second Vice President shall be responsible for the maintenance and supervision of the various publications of the Society, and he shall organize the necessary committees to properly administer the care, maintenance and revision of the publications necessary to providing current information on various subjects of geologic interest and the keeping of records."

