

# News

# BULLETIN

MISSISSIPPI GEOLOGICAL SOCIETY

VOLUME VIII

AUGUST, 1961

NUMBER 6

## FIRST MEETING OF YEAR SEPTEMBER 11TH

### — Special Election —

A special election for the office of secretary will be held at the first meeting of the year, September 11th, to fill the vacancy left by Armond T. Ricci, transferred to Shreveport. The Nominating Committee as appointed by the Executive Committee submits to the Society its nominees for this office during the year 1961-1962:



#### FLEMING W. BROWNING

University of Virginia BA & MS, 1951  
1952-61: Shell Oil Company

Affiliations: MGS 8 years & AAPG

Past Service: Chairman Pub. Comm.  
1959-60, Mbr. Enter. Comm. 1960-61.



#### ROBERT O. VESPER

University of Nebraska, BS, 1949  
1949-61: Carter Oil Company

(presently Humble O&R)

Affiliations: MGS 4 years & AAPG

Events and programming of the coming year will also be discussed at this meeting. Our very able Entertainment Chairman, Marvin Oxley, has seen to the extracurricular activities and "Free Refreshments" for this meeting. Lets all turn out and get the Society off to a good start!

## PROGRESS REPORT ON AEC ACTIVITIES IN MISSISSIPPI

Ed. Blanton and Tom Tillman  
Sun Oil Company

The U. S. Atomic Energy Commission and Department of Defense are investigating use of two of Mississippi's many salt domes for scientific studies important to the Nation's seismic research program. This is only one phase of the overall program.

President Eisenhower's announcement of approval of an expansion in research and development related to the seismic research program said in part:

"Known as Project VELA, the program calls for increased basic research in seismology; procurement of instruments for a world-wide research program; development of improved seismic instruments; construction and operation of prototype seismic detection stations; and an experimental program of underground detonations encompassing both high explosive and where necessary nuclear explosions.

"Such nuclear explosions as are essential to a full understanding of both the capabilities of the presently proposed detection system and the potential for improvements in this system would be carried out under fully contained conditions and would produce no radioactive fallout. In order to develop sufficient reliable data from the program, it is anticipated that it will be necessary to conduct a series of explosions of various sizes, in differing types of geological formations.

"Government agencies, including the Department of Defense, the Atomic Energy Commission, the Department of Commerce and the Department of Interior, as well as universities and private organizations, will participate in carrying out the U. S. program of research and development."

To date, no nuclear detonation has been authorized in the program, but preparatory work is underway at a Nevada Test Site and exploratory work is underway on the Tatum Dome in Lamar County, Mississippi, and on the Bruinsburg Dome in Claiborne County, Mississippi.

On Tuesday, May 23, 1961, the writers along with Jim Watson of Humble, represented the Mississippi Geological and Jackson Geophysical Societies at a briefing con-

(Continued on Page 4)

### SPONSORS

For the past year this News Bulletin has been made possible by the cooperation of the companies that are listed on Page six. Take note and . . .

SUPPORT OUR SPONSORS

## MISSISSIPPI GEOLOGICAL SOCIETY

(Affiliated with the American Association of Petroleum Geologists  
& Gulf Coast Association of Geological Societies)

### Executive Committee

X. M. Frascogna, Consulting Geologist — President  
L. J. Ringenberg, Monsanto — Vice President  
A. T. Ricci, Mobil — Secretary  
L. B. Culligan, Calco — Treasurer  
R. B. Ross, Tenneco — Program Chairman  
R. V. Ewing, Dixie — Past President

### News Bulletin Staff

D. D. Brown, Continental — Editor  
F. D. Molsberry, Cities Service — Assistant Editor

### Correspondents

G. K. Anderson,	Ohio
J. D. Bryan,	Monterey
C. D. Champlin,	Pan American
J. R. McElroy,	California
W. E. Taylor,	Union Producing

## TREASURER'S REPORT

### MISSISSIPPI GEOLOGICAL SOCIETY

JUNE 1, 1961 — JULY 1, 1961

#### On Hand — June 1

Checking Account — Deposit Guaranty	\$ 1,506.47
Savings Account — First Federal	2,216.75

#### INCOME STATEMENT

Publications	Income	Expense
Receipts from Sales	\$ ---	\$ ---
Mailing Expense	\$ ---	\$ ---
<b>Entertainment Committee</b>		
Meeting Expense	---	60.00
Dance Expense	---	4.30
<b>Newsletter</b>		
Printing, Mailing, & Misc.	---	95.14
<b>Administrative</b>		
Dues	423.00*	
Misc. Admin. Exp.	---	291.68
	\$ 423.00	\$ 451.12

#### On Hand — July 1

Checking Account	\$1,478.35
Savings Account	2,216.75
Paid Members to Date 1961-1962	143

\* (2 members pre-paid)

## — PROGRAM COMMITTEE —

DATE: Monday, September 11, 1961  
PLACE: Sun 'n Sand  
TIME: Dinner Meeting — "Free Refreshments"  
SUBJECT: Special Election and Business Meeting

(Meetings in the coming year will be held the 1st Monday of each month. The above meeting will be an exception due to Labor Day falling on the 1st Monday of the month).

DATE: Monday, October 2, 1961  
PLACE: Sun 'n Sand  
TIME: Dinner Meeting  
SPEAKER: J. N. Howell, Shell Oil Company  
SUBJECT: "Warrior Basin Exploration"

DATE: Monday, November 6, 1961  
PLACE: Sun 'n Sand  
TIME: Dinner Meeting  
SPEAKER: Harold E. Karges, Consulting Geologist  
SUBJECT: "Lower Tuscaloosa Sand Patterns"

## — PUBLICATIONS COMMITTEE —

Anyone knowing the whereabouts of Society property such as: unsold "Red Books", Guide Books, etc. please contact any member of the Publications Committee without delay!

Members soon will receive a complete list of publications available through the Society. You are encouraged to use, and promote the sale of these publications by directing inquires to the Publication Committee, MGS, Box 422, Jackson or by telephone, Bob Violette FL 5-5703.

## — PUBLICITY COMMITTEE —

A one page advertisement entitled "Mesozoic - Paleozoic Producing Fields of Mississippi and Alabama" will be carried in three issues of the AAPG Bulletin commencing with the August issue. The society will be billed at the rate of 20% commission on all sales made through these Bulletin ads.

## STANDING COMMITTEES FOR 1961-62

### I A.A.P.G. COMMITTEE

This committee serves to coordinate the efforts and activities of the Mississippi Geological Society with the American Association of Petroleum Geologists. Based on number of membership, the M.G.S. is entitled to three (3) members.

1. L. B. Culligan (California Co.)
2. D. J. Hughes (Triad Drlg. Co.)
3. G. O. Davis (Sinclair O&G.)

### II ENTERTAINMENT COMMITTEE

This committee shall plan, coordinate and be responsible for all social functions of the Society. The committee has been heavily reinforced to provide an exceptionally spirited program of entertainment during the coming year.

1. M. L. Oxley, Chairman (Lone Star)
2. M. H. Dyott (Mobil)
3. J. R. McElroy (California)
4. D. M. Muir (P.G.A.C.)
5. M. M. Phillips (Gulf)
6. R. R. Jacobs (Union Prod.)

### III FIELD TRIP COMMITTEE

This committee is responsible for preparation and supervision of field trips as may be desired by the membership. Field trip to Arkansas Valley is tentatively set for Spring of 1962.

1. B. L. Smith, Chairman (Sun)
2. J. C. Perryman (Gulf)
3. E. B. Parmalee (Shell)
4. D. J. Munroe, Jr. (Sun)
5. R. R. Jacobs (Union Prod.)
6. C. C. Bush (Schlumberger)
7. W. E. Taylor (Union Prod.)

### IV NOMENCLATURE COMMITTEE

This committee shall promptly name any new oil and/or gas fields, reservoirs, salt domes, and any other geologic feature it deems advisable in the State of Mississippi.

1. Emil Monsour, Chairman (Sun)
2. L. J. Ringenberg (Monsanto)
3. R. R. Zachman (Pan American)
4. H. M. Morse (Oil & Gas Board)
5. Jim Proctor (Rinehart's)
6. Graham L. Hughes (Sinclair)
7. W. E. Sistrunk (HycO Oil Co.)
8. C. G. Bilberry (Gulf)
9. J. C. Sullivan (Union Prod.)

### V PROGRAM COMMITTEE

This committee shall secure speakers and lecturers on topics of interest to the Society. This year, emphasis on local problems handled by local talent.

1. R. B. Ross, Chairman (Tenneco)
2. M. F. Kirby (Consultant)
3. W. M. Frew (Continental)
4. J. F. Womack (Union Prod.)
5. M. H. Dyott (Mobil)

## VI PROJECTION COMMITTEE

This committee shall provide and operate all projection and sound equipment necessary to any presentation before the Society.

1. H. L. Magnuson, Chairman (California)
2. E. R. Swett (Skelly)

## VII PUBLICATIONS COMMITTEE

This committee is responsible for the storage, sale and handling of all Society publications. Thanks to all members of the committee and those who assisted in locating publications and providing new storage at the Geological Survey Sample Library. Our special thanks to Tracy Lusk, State Geologist, Ed Blanton, Sun Oil, and Baxter Smith, Sun Oil.

1. W. H. Moore, Chairman (Miss. Geol. Survey)
2. C. H. Bruce (Mobil)
3. R. R. Jacobs (Union Prod.)
4. R. N. Arrington (Continental)

## VIII PUBLICITY COMMITTEE

This committee is responsible for dissemination of information as to meetings, and public information. Particular emphasis is being given to publicizing sale of Society publications.

1. D. E. Herlihy, Chairman (Mobil)
2. Verne L. Culbertson, Public Info. (Consultant)
3. F. W. Browning, Meetings (Shell)
4. H. W. Webb, Meetings (Shell)
5. F. X. Bland, Publications (California)

## SPECIAL COMMITTEES FOR 1961-62

### I BOY SCOUT

This committee arranges for lectures, geological exhibits and field trips for local Boy Scout organizations. Primarily this instruction leads to Scout attainment of merit badge in geology.

1. H. E. Karges, Chairman (Consultant)
2. B. L. Smith (Sun)
3. E. R. Hines (Consultant)
4. Kingsland Arnold (Mobil)

### II NEWS BULLETIN

Provide the membership with all the news that's fit to print.

1. D. D. Brown, Editor (Continental)
2. F. D. Molsberry, Asst. Editor (Cities Service)

### III PHOTO DIRECTORY

Provide a photo directory within the shortest practicable time at minimum cost. Please cooperate when notified.

1. Julius M. Ridgway, Co-Chairman (Ridgway Mgt. Inc.)
2. Louis E. Ridgway, Jr., Co-Chairman (Ridgway Mgt. Inc.)
3. J. L. Terry (Argo)
4. D. M. Miller (Southern States)
5. W. M. Frew (Continental)

### IV JOINT COMMITTEE of "Operation Vela Uniform"

This committee is a joint undertaking of the Jackson Geophysical Society and the Mississippi Geological Society to provide the membership with current reports as to progress of Atomic Energy Commission's activities on Tatum and Bruinsburg Salt Domes, Mississippi. A very interesting field trip might be arranged.

1. A. E. Blanton, Co-Chairman, MGS (Sun)
2. M. D. Butler, Co-Chairman, JGS (Gulf)
3. C. D. Champlin, MGS (Pan-American)

### V GOLF TOURNAMENT

Arrange for annual tournament of members.

1. E. B. Launius, Chairman (Offshore Drlg. Co.)
2. V. L. Culbertson (Consultant)
3. D. W. Layman (Monsanto)
4. C. A. Barton (Gulf Coast Drlg. Co.)
5. R. R. Jacobs (Union Prod.)

## VI BOWLING

Furnish results of tournaments and league action.

1. R. C. Bertolet, Chairman (Pan American)
2. J. F. Bollman (Larco)
3. E. L. Horstman (California)

## VII INSURANCE

Provide liason between insurance company and Society.

1. E. G. Jeffreys (Consultant)
2. E. R. Hines (Consultant)

## VIII REFERENCE BOOK COMMITTEE

Initially, to provide estimate of cost and organizational requirements to prepare and publish supplement to Red Book. Objective date: Spring, 1962.

1. E. B. Launius, Chairman (Offshore Drlg. Co.)
2. D. J. Hughes, Editor (Triad Drilling Co.)

## IX PRESERVATION OF CORES & SAMPLES

Emphasize practices and techniques for better cores and samples.

1. W. H. Moore, Chairman (Miss. Geol. Survey)
2. E. R. Adams (Shell)
3. C. D. Smith (Union Prod.)
4. E. Monsour (Sun)
5. E. M. Rice (Trowbridge)

## X TYPE LOCALITY

Arrange for typing of surface and subsurface localities.

1. W. E. Taylor, Chairman (Surface) (Union Prod.)
2. W. E. Tillack (Skelly)
3. E. M. Rice, Chairman (Subsurface) (Trowbridge)
4. E. R. Adams (Shell)

## XI PERMANENT EXHIBITS

Design and construct permanent-type exhibits for use at Science Fairs, State Fair, Conventions and other uses. Project includes construction of plaque-type emblem of Society.

1. H. M. Cotten, Chairman (Pan American)
2. B. L. Smith (Sun)
3. W. B. Johnson (Millsaps)
4. C. H. Lautier (California)
5. K. Arnold (Mobil)

## XII GEOLOGICAL PROJECTS

Study groups to work and resolve problems of local interest. Projects will be under overall coordination of Vice-President, L. J. Ringenberg (Monsanto).

Group assignments as yet incomplete; however, will be announced during first meeting, September 11th.

## XIII ADVISORY BOARD

Experimental in nature, but designed to fill a major need. Under chairmanship of senior geologist, appointed by Executive Council. Twelve (12) senior members, selected by Council and Board Chairman. Purpose is to utilize talents of experienced members towards possible resolution of professional and Society problems, e.g. Ethics, Membership Qualifications, etc.

1. Henry N. Toler, Chmn. (Consulting Geologist)
2. D. C. Davis (Continental)
3. L. R. McFarland (Mobil)
4. A. E. Blanton (Sun)
5. C. H. Ramsden (Calco)
6. W. A. Skees (Pan-Am)
7. D. C. Harrell (Consulting Geologist)
8. R. C. Howard (Gulf)
9. F. F. Mellen (Consulting Geologist)
10. W. H. Knight (Consulting Geologist)
11. R. R. Priddy (Educator)\*
12. F. B. St. John (Humble)\*
13. Jack Phillips (Cities Service)\*

\* Confirmation Pending

## AEC ACTIVITIES

(Continued from Page 1)

ducted by members of the various participating agencies. This meeting was supervised by Dr. A. D. Suttle, Jr., director of the Mississippi Industrial and Technological Commission. Dr. Suttle is on leave of absence from Humble at the present time. Numerous state officials and representatives of industry also attended the briefing.

It is interesting to note that Project VELA is scheduled for three segments. VELA UNIFORM program applies to the underground phase. VELA SIERRA applies to detonations at high altitude, and VELA HOTEL is the name assigned to a long-range satellite project.

A worldwide network of seismic stations, including six behind the iron curtain, will participate in VELA UNIFORM. A total of 125 sets of instruments have already been procured for installation in this country. The first sets are scheduled to be ready by mid-1961. One seismological station will be located at the University of Mississippi at Oxford.

A permanent or Geneva-type station, the Wichita Mountains Seismological Observatory, is now in operation. This new observatory is located in the foothills of the Wichita Mountains, about 15 miles northwest of Lawton, Oklahoma. This station records an average of about 15 quakes per day.

One of the objectives of Project VELA UNIFORM is to solve the problem of whether the seismic energy recorded is being received from an underground nuclear explosion or an earthquake. Earthquake prediction research studies will be conducted. Data collected will consist of the nature, location and frequency of earthquakes. Stations participating will send data to the U. S. Coast and Geodetic Survey.

Technical requirements of the program could be met only by preparing a detonation site in a large body of salt with certain characteristics as to depth of the salt body under the earth's surface, purity of the salt, and location in an area that would permit placing seismic instruments at considerable distances from the site in several directions. The specifications could best be met in a salt dome. Geologists gathered all known data about domes in several states, including those in Mississippi, and a determination was reached that the Tatum and Bruinsburg Domes would meet the specifications best.

Present indications are that the Tatum Dome presents fewer problems for construction work and will be selected for use in the program if the exploratory work now underway proves the shape of the dome to be as expected. This dome, located about 30 miles southwest of Hattiesburg, has been explored by 16 fairly well distributed holes which indicate the salt core to be nearly round with a diameter of about 5,000 feet. The top of the salt is 1,520 feet below the surface. The area is used for timber and livestock production. Exploratory work, consisting of drilling of holes and taking core samples, is being conducted at Bruinsburg Dome, about 40 miles south of Vicksburg, to provide a second test site should the Tatum site fail to be satisfactory. Nine holes have previously been drilled on the Bruinsburg Dome, six of which encountered salt, and indicate the dimensions of the salt core to be about 4,800 by 5,400 feet with the top of the salt at a depth of about 2,000 feet.

After the exploratory drilling program has been completed and the results have been evaluated, major construction is planned for one of the sites preparatory to possible firing of nuclear devices. The shot at Tatum will be known as "DRIBBLE." Four 2800 foot exploratory holes in the salt core with one degree of deviation from vertical are planned for the Tatum Dome. At the time of the briefing one hole was completed at 3500 feet and the second was in cap rock above the salt. Six more holes are planned around the flanks of the salt.

In preparation for the actual shots the tentative plans call for the drilling of two 4 foot diameter shafts in the salt to 2,500 feet below the surface. Spherical cavities,

centering around the 2,500 foot level will be hollowed out at the bottom of each of these shafts. One cavity will have a diameter of 90 feet and the other 340 feet. The smaller cavity is to have a nuclear device suspended at its center and the cavity and shaft filled with concrete and aggregate. This will constitute the "tamped" shot of the program. The large cavity will have the same size nuclear device suspended at its center. A plug will be placed in the shaft at the top of the cavity and the shaft will be filled with concrete and aggregate. This will constitute the "decoupled" shot. Decoupling has been defined as the technique of reducing the volume of seismic, or earth vibration, signals from an underground explosion by detonating the explosive in a large underground hole. If an underground shot is to be "decoupled" the size and shape of the cavity must be such that the hydrodynamic pressures do not cause the surrounding medium to exceed its elastic limit. One purpose of the nuclear shots in Mississippi is to further evaluate "decoupling" techniques.

Preliminary experiments, using chemical high explosive detonations in smaller cavities in salt, were conducted by the AEC during late 1959 and early 1960 deep underground in a salt mine near Winnfield, Louisiana. The experiments verified the theory of decoupling, and showed that the seismic signal from a fully tampered explosion was about 120 times greater than the signal from a decoupled explosion of the same energy yield. Some experts estimate the signal to be some 300 times greater.

Firing nuclear devices in both tamped and decoupled placements in the same medium (salt) and in the same area (a Mississippi salt dome) would permit correlation and evaluation of seismic results which should produce a quite full knowledge of decoupling possibilities and the recording of such shots.

The plans for the instrumentation to accompany the nuclear shots are very elaborate. In addition to a large number of different kinds of seismographs and seismometer arrays to be used on the surface, there are to be four holes drilled near the shots for the placement of radio transmitting strain gauges, vibration meters, accelerometers, etc. The deepest gauge or instrument will be at 3000 feet.

All information pertaining to Project DRIBBLE is unclassified. Personnel associated with the project are hopeful that as much scientific knowledge as possible be derived from these operations. In this connection and barring unforeseen safety regulations, a field trip to the site of the Tatum Dome operation may be a possibility for the future.

In an effort to keep the membership of both the Geological and Geophysical Societies posted on developments in Mississippi, a joint committee has been formed. The committee will maintain liaison with the Mississippi Industrial and Technological Commission. Co-Chairmen of this special committee are Ed. Blanton (Sun Oil Company) and Mark Butler (Gulf Oil Corporation).

---

## BOWLING CHAMPIONSHIP

The Pan Am "Oilers" won the Petroleum Bowling League championship by defeating United Gas 2636 - 2564 in the championship playoff. The "Oilers" won possession of the traveling team trophy which was donated by the Mississippi Geological Society. Individual championship trophies were awarded to the members of the Pan Am team and individual 2nd place trophies were awarded to the members of the United Gas team. A larger name plate will have to be added to the traveling team trophy since there is no room left for engraving the name of this year's winner.

---

Do your part, encourage new memberships. Application cards are available from Treasurer, Leland Culligan, MGS, Box 422, Jackson or by telephone FL 4-4961.



**RICHARD WILSON FARLEE**  
(1913 - 1961)

Richard Wilson Farlee, Senior Geologist for Shell Oil Company in Jackson, Mississippi, passed away at his home in Jackson on July 3, 1961. His death has saddened all who were fortunate to have known him. Although he had suffered from a heart condition and was in failing health for the past several years he remained active in his profession up until the time of his death.

Dick, as he was known to all of his friends, was born July 26, 1913 in Princeton, New Jersey. He was the son of the late Richard Freeman Farlee and Mrs. Rose Cary Farlee. Dick spent his early years in Princeton where he attended grade school and high school. He was graduated from Hun Prep School and Princeton University with a Bachelor of Science degree in Geological Engineering in 1936. During these school years he suffered two attacks of rheumatic fever. This sickness left Dick with a heart condition which limited his physical activity.

Dick's entire working life was spent in the oil industry. In 1938 he started with Shell Oil Company as a Junior Geologist, in Centralia, Ill. It was here he met and married Dorothy I. Sissom in 1940. While in Centralia he suffered his third attack of rheumatic fever which resulted in his being bedridden for ten months and unable to work for thirteen months. In 1947 he was transferred to Tallahassee, Florida as a geologist and in 1948 he was made a District Geologist in Tallahassee. In 1949 he was transferred to Jackson, Mississippi and in 1951 was made acting Division Geologist. In 1952 he was made Geologist Special Problems in Jackson, Mississippi and in 1953 Senior Geologist. Dick Farlee was a tower of strength in the Jackson Division. He was always available and willing to give advice and counsel to the younger geologists and he was always busy working on geologic problems of the Jackson Division.

Dick Farlee was a member of the American Association of Petroleum Geologists, Geological Society of America, Gulf Coast Section of the Society of Economic Paleontologist and Mineralogists, Mississippi Academy of Science and Mississippi Geological Society. In 1959 he was program chairman for the Mississippi Academy of Science and in 1960 was program co-chairman for the Biloxi, Mississippi meeting of the Gulf Coast Association of Geological Societies. When called upon, Dick was always ready to contribute to or participate in any worthwhile project. In addition to professional affiliations, Dick was active in the Boy Scouts of America and was very active in church work. He was a member of the St. Luke's Methodist Church of Jackson where he served as a member of the Official Board.

He is survived by his wife, Dorothy, two sons, Richard and David, a daughter, Patricia, his mother, two sisters and a brother.

Dick will be greatly missed by his many friends. He will be remembered by all those who knew him for his devotion to his wife and family, for his loyalty to his friends and company, for his energetic devotion to his church, for his outstanding ability as a geologist, and for his counseling and attention to the problems of others.

**Gulf** — FRANK WILSON, geologist, transferred to Jackson from Tripoli, Libya

**Humble** — Humble's recent reorganization of its southeastern region has resulted in the relocation of the following:

Among the geologists and geophysicists transferring into Jackson are:

R. W. GEMMER from Billings, Montana  
F. D. RICHARDSON from Wichita Falls, Texas  
ROBERT BEALL from Shreveport, Louisiana  
C. C. KEATING from Hattiesburg, Mississippi  
W. H. WISE from Shreveport, Louisiana  
D. B. BRASFIELD from Shreveport, Louisiana  
C. M. FUNK from New Orleans, Louisiana  
G. O. WINSTON from Billings, Montana  
R. W. VERKINS from Shreveport, Louisiana  
L. A. MARKLEY from New Orleans, Louisiana  
S. R. MARSH from Shreveport, Louisiana  
Among the geologists and geophysicists transferring from Jackson are:

JAMES D. BRYAN to Morgan City, Louisiana  
MARION E. CHANDLER to Morgan City, Louisiana  
JAMES VAUSE to Grand Isle, Louisiana  
MARVIN E. DOSS to New Orleans, Louisiana  
FORREST W. PACE to Hattiesburg, Mississippi  
BILL PHILLIPS to Hattiesburg, Mississippi  
PAUL BOLLHEIMER to Shreveport, Louisiana

**Mobil** — MACK STEWART, recent graduate from T.C.U. has joined Mobil in Jackson.

ARMAND RICCI, transferred from Jackson Exploration District to Shreveport Producing District in Shreveport.

**Ohio** CLARENCE KALLSEN, geologist, transferred to Jackson from Sidney, Nebraska.

**Pan Am** PAT N. MASON, R. A. NORTHCUTT, & H. R. SHAEFFER, geologists, transferred to Jackson from Shreveport, Louisiana.

**Shell** — W. W. OGDEN, Division Exploration Manager in Jackson transferred to Midland, Texas as Assistant Area Geophysicist.

ROBERT MENEFEE, transferred from New Orleans Area Office to Jackson as Division Exploration Manager.

PHIL EISENSTATT, Division Geologist of Jackson, transferred to New Orleans Area Office.

**Sinclair** — DON L. FRAZEE, geologist, transferred to Jackson from Lafayette, Louisiana.

**Sun** — MAX E. JUDY, geophysicist, transferred to Jackson from Billings, Montana.

—o—  
Dues will be delinquent after October 1, 1961. Pay up now so that your name will appear on the 1961-62 membership list.

—o—  
Any member desiring to contribute an idea, news item or personal service don't hesitate to notify editor or correspondents of the News Bulletin.

NEWS BULLETIN SPONSORS

**NEELY BLUE PRINT & SUPPLY CO.**  
 FL 4-3523 JACKSON, MISS.

---

**BAROID WELL LOGGING SERVICE**  
 FL 2-6629 JACKSON, MISS.  
 DAN GOSSAGE

---

**SCHLUMBERGER WELL SURVEYING CORP.**  
 FL 2-8589 JACKSON, MISS.

---

**EDGAR TOBIN AERIAL SURVEYS**  
 CApitol 3-6203  SAN ANTONIO, TEXAS

**CORE LABORATORIES, INC.**  
 FL 3-0924 JACKSON, MISS.

---

**L. L. RIDGWAY CO., INC.**  
 FL 5-4751 JACKSON, MISS.

---

**P. G. A. C.**  
 FL 2-4337 JACKSON, MISS.

---

Insist on the bag with the Golden Tag  
**HUBCO SAND SAMPLE BAGS**  
 Write for free sample  
 HUTCHINSON BAG CORP., HUTCHINSON, KANSAS

*J. M. S.*

PROFESSIONAL CARDS

**XAVIER M. FRASCOGNA**  
 INDEPENDENT GEOLOGIST  
 P. O. Box 10653  
 Westland Station  
 Jackson 9, Mississippi  
 Phone FL 5-2956

Fleetwood 5-1528  
**WILBUR H. KNIGHT**  
 Consulting Geologist  
 901 FIRST NATIONAL BANK BUILDING  
 JACKSON 1, MISSISSIPPI

**H. MACK COX**  
 CONSULTANT  
 FL 2-7524 810 STANDARD LIFE BLDG.

**ROBERT R. PHILLIPS**  
 CONSULTING GEOLOGIST  
 FL 3-7964 DEPOSIT GUARANTY BANK BLDG.

NEWS BULLETIN  
 P. O. Box 2607  
 Jackson, Miss.



Mr. Donald D. Brown  
 Continental Oil Co.  
 Box 2607  
 W. Jackson 7, Miss.

**Mississippi Geological Society NEWS BULLETIN**



# News

# BULLETIN

MISSISSIPPI

GEOLOGICAL

SOCIETY

VOLUME VIII

JUNE, 1961

NUMBER 5

## ANNOUNCING THE NEW OFFICERS



At the well attended (approximately 200 members) last meeting of the year, May 17th, the above new officers were elected to guide the Society through the 1961-62 fiscal year. X.M. Frascogna, consulting geologist, front center, was elected president. Serving with him will be, top left to right, Armand T. Ricci, Mobil Oil Company, secretary; Lester J. Ringenberg, Lion Oil Division of Monsanto Chemical Company, vice president; and Leland B. Culligan, The California Company, treasurer. The new administration is already hard at work preparing a varied and interesting program which we believe will appeal to the majority of the membership.

## HIGHLIGHTS OF 1961 AAPG EXECUTIVE COMMITTEE MEETING

Leland B. Culligan, A.A.P.G. District Representative (Mississippi) has requested that certain matters discussed and acted upon at the 1961 Executive Committee meeting be brought to the attention of the M.G.S. membership.

### (1) Committee on Professional Standards

Past President Parker will be chairman of a new special Committee on Professional Standards. The Committee will investigate the various means of establishing high professional and ethical standards.

### (2) Association Membership

The Membership Qualification Committee was authorized to study the qualifications for Associate membership as a "follow-up" of recent changes in membership qualifications.

### (3) Carbonate Rocks Symposium

Publication as a special A.A.P.G. volume of the "Carbonate Rocks Symposium" was approved. William E. Ham was designated as Editor.

### (4) Distinguished Lecture Activities

D. D. Utterback (substituting for Chairman Philpott) reported that it would probably be necessary to institute shorter and fewer lecture tours in order to maintain the quality of Distinguished lectures of very high quality would be preferable to permitting any lowering of quality for the tours.

### (5) Code of Ethics and Membership Certificates

Copies of the new Membership Certificate and Code of Ethics will be sent to the affiliated societies for display and will be available for sale to members on good standing.

(Continued on next page)

## SPONSORS

For the past year this News Bulletin has been made possible by the cooperation of the companies that are listed on Page Four. Take note and . . .

**SUPPORT OUR SPONSORS**

## MISSISSIPPI GEOLOGICAL SOCIETY

(Affiliated with the American Association of Petroleum Geologists  
& Gulf Coast Association of Geological Societies)

### Executive Committee

R. V. Ewing, Dixie — President  
 E. R. Adams, Shell — Vice President  
 Alan Jackson, Humble — Secretary  
 D. E. Herlihy, Mobil — Treasurer  
 J. L. Ashman, Monsanto — Program Chairman  
 M. F. Kirby, Independent — Past President

### News Bulletin Staff

D. C. Davis, Continental — Editor  
 D. D. Brown, Continental — Assistant Editor

### Correspondents

G. K. Anderson,	Ohio
J. D. Bryan,	Monterey
C. D. Champlin,	Pan American
J. R. McElroy,	California
W. E. Taylor,	Union Producing

## COMMITTEE REPORTS

### Nomenclature

The Nomenclature Committee has recommended the following field names for new producing areas:

Field Name (Formation)	Discovery Well, Gauge, Date. E. L. Erickson No. 1 Weems, et al, Sec. 22, T9N-R10W, Jones County, Miss. IPF — Upper zone 528 BOPD, no water, 1/4" choke, TP 600#, Gr. 34.3° API, GOR 600/1. IPF — Lower zone 576 BOPD no water, 1/4" choke, TP 750#, Gr. 34.1° API, GOR 700/1, Completed 5/21/61.
Pool Creek (Rodessa & Sligo)	

## TREASURER'S REPORT

APRIL 17, 1961 — JUNE 1, 1961

### On Hand — April 17

Checking Account — Deposit Guaranty \$ 3,559.67  
 Savings Account — First Federal 2,216.75

### INCOME STATEMENT

Publications	Income	Expense
Receipts from Sales	\$ 390.22	
Mailing Expense		\$ 50.90
<b>Entertainment Committee</b>		
Meeting Expense		781.75
Dance Expense		2,581.00
Dance Ticket Sales	830.00	
Dance Contributions	301.00	
<b>Newsletter</b>		
Mailing		21.20
<b>Administrative</b>		
Miscellaneous Expense		175.57
Dues	36.00	
	\$1,557.22	\$3,610.42

### On Hand - June 1

Checking Account \$1,506.47  
 Savings Account 2,216.75  
 Paid Members to date 1960-1961 — 361

## Highlights of AAPG Executive Committee Meeting

(Continued from page 1)

### (6) A.G.I.

A lengthy discussion of the proposed revision of A.G.I. indicated three areas of controversy among the member societies, (a) apportionment of representation in the control of the new organization; (b) the manner of election of the A.G.I. Executive Committee; and (c) apportionment of financial support among the member societies. Past President Parker will develop a questionnaire to our members so that our Executive Committee may be better informed on the attitudes of the membership on these issues.

## COPIES OF THE PROGRAM OF THE ANNUAL AAPG — SEPM MEETING REQUESTED

The Executive Committee of the Mississippi Geological Society has requested 350 copies of the program of the 1961 Annual Meeting of the AAPG - SEPM in Denver. It is planned to distribute a copy to each member in order to stimulate interest, encourage scientific writing among members and aid the dissemination and discussion of geological information.

## ANNUAL TREASURER'S REPORT

JUNE 1, 1960 — JUNE 1, 1961

Checking Account — Deposit Guaranty \$1,090.39  
 Savings Account — First Federal 2,130.67

### INCOME STATEMENT

	Income	Expense	Net
<b>Publications</b>			
Receipts from Sales	\$1,236.13		
Miscellaneous Expense		\$ 188.20	\$1,047.93
<b>Entertainment Committee</b>			
Meeting Expense		1,695.58	
Dance Expense		2,796.33	
Dance Contributions	1,604.61		
Dance Ticket Sales	1,460.00		
Refund of Advance	10.00		
Meals	179.50		
Contribution	50.00		(1,187.80)
<b>Newsletter</b>			
Ads	225.00		
Printing & Mailing		319.00	(94.00)
<b>Field Trip</b>			
Miscellaneous Bills		6.50	
Ads	185.00		178.50
<b>Administrative</b>			
Miscellaneous Expense		560.45	
Dues	1,101.00		540.55
<b>GGACS</b>			
Miscellaneous Expense		69.10	(69.10)
	\$6,051.24	\$5,635.16	\$ 416.08

### On Hand — June 1, 1961

Checking Account \$1,506.47  
 Savings Account 2,216.75

Paid Members to Date — 361



## SUCCESSFUL BOWLING SEASON CLOSES

The Jackson Petroleum Bowling League ended a highly successful season on June 8th with the United Gas team winning the second half championship. United Gas will face the Pan Am "Oilers," winners of the first half championship, for the overall league title. Competition in the league was keen throughout the season and the winners were not decided until the final night of bowling in each half.

This year the league was comprised of 20 teams representing most of the major oil companies and a few service companies and drilling contractors. Next year the league will be split into two divisions. One division will bowl at the new Sugar Bowl to accommodate the south Jackson bowlers, the other division will continue to bowl at Bowl-O-Rama to accommodate the north Jackson bowlers. The winners of each division will bowl each other for the league championship. The league will be limited to 12 teams per division so any companies desiring to enter new teams should contact Jerry Anderson (Ohio Oil Company) or Don Hook (Conoco) as soon as possible so that their applications can be considered. It is necessary, however, that all bowlers be engaged in oil exploration or development, as interpreted by the league board of directors.

During the 1960-61 season Chevron Oil Company bowled a new league record of 3079 for a team handicap series and Larco bowled a new league high of 1097 for a team handicap game. Roger Wood bowled the season's high individual scratch series of 619 and the season's high individual handicap series of 703. Ben Troutman bowled the season's high individual scratch and handicap games of 265 and 284 respectively. Bob Knellinger, Casey Libbey and Paul Walker each received ABC Triplicate Club awards for bowling three consecutive identical games in a single 3 game series.

Final standings for the entire season are:

Team	Hi		Hi		Total
	Game	Series	Won	Lost	
UNITED GAS	1055	2887	191	113	88572
UNION	1023	2852	181	123	86804
FIRE CHIEFS	1033	2906	179	125	84202
PETS	1044	2897	175	129	84124
S.E. WELL LOGGING	1019	2928	171	133	86324
OILERS	1025	2925	168	136	85712
ROWLEY	1031	2941	168	136	85664
LARCO	1097	2922	163	141	80401
INDEPENDENTS	1015	2940	162	142	89689
CHEVRON	1039	3079	162	142	82329
PGAC	1016	2936	154	152	85170
CALCO	1071	2917	142	162	83551
TENNESSEE GAS	1014	2875	142	162	79185
SELECTS	1035	2860	141	163	82017
POPS	1029	2956	138	166	74137
PRIDES	1015	2896	135	169	81981
CONOCO	1000	2890	126	178	83987
SKY CHIEFS	1054	2873	123	181	77549
SUN	1025	2815	112	192	80666
HYCALOG	1047	2823	107	197	78274

## ANNUAL MGS GOLF TOURNAMENT RATED AMONG BEST

The 1961 MGS Annual Golf Tournament was held in conjunction with the Spring Dance on Friday, April 28, 1961, at the Colonial Country Club in Jackson.

Posting a very nice 76 to win low gross honors was David K. Brooks. Dan Herlihy had low net with a 58. Other events and winners were:

2nd Low Gross	—	Buddy Cleveland, winning a sudden death play-off with Bill Stinson.
2nd Low Net	—	Charlie Fry
Most 4's	—	Bill Stinson
Most 5's	—	Dee Layman
Most 6's	—	Tom Tillman
Low Ball Foursome	—	Vern Culbertson Gene Davis Rudy Ewing Ed Launius
Longest Drive	—	Armand Ricci
Hole-in-one	—	Bob Neely
High Gross	—	Don Gifford

Ninety six golfers participated in the tournament although due to the strenuous pace and intensity of competition considerably fewer finished.

Golf Committee:

Charlie Barton	—	Gulf Coast Drilling Co.
Don Franklin	—	Consultant

— 0 —

## PETROLEUM GOLF LEAGUE FORMED

A Petroleum Golf League has been formed in Jackson for the first time. There are eight participating teams and at the time of this writing play is going into the fourth match. There are to be thirteen matches. A two-week limit is allowed for each match. The league commenced play the week-end of May 6-7 and will be completed the week-end of November 25-26.

At the end of the schedule, trophies will be awarded the winner and runner-up teams determined by point standings. Nine other individual and team trophies will also be awarded.

Scoring is done by handicap with four players participating on a team per match, ranked 1 - 4. Players of like rank for a match play each other. There is a total of 26 points per match. The handicaps are determined by the 80% handicap method.

Officers of the new league were elected at a meeting by representatives from the respective teams and are:

Chairman	—	Tom Moore, The California Company
Secretary	—	Ellwood Harris, Shell Oil Company
Team captains and participating teams are as follows:		
Ron Ohnoutka,		Pan American Petroleum Corporation
Dwight Free,		Continental Oil Company
Marvin Oxley,		Lone Star Producing Company
Armand Ricci,		Mobil Oil Company
Ellwood Harris,		Shell Oil Company
Bruce Susong,		The California Company
Jim Bishop,		United Gas
Tom Tillman,		Sun Oil Company

NEWS BULLETIN SPONSORS

**NEELY BLUE PRINT & SUPPLY CO.**  
 FL 4-3523 JACKSON, MISS.

---

**BAROID WELL LOGGING SERVICE**  
 FL 2-6629 JACKSON, MISS.  
 DAN GOSSAGE

---

**SCHLUMBERGER WELL SURVEYING CORP.**  
 FL 2-8589 JACKSON, MISS.

---

**EDGAR TOBIN AERIAL SURVEYS**  
 Capitol 3-6203  SAN ANTONIO, TEXAS

**CORE LABORATORIES, INC.**  
 FL 3-0924 JACKSON, MISS.

---

**L. L. RIDGWAY CO., INC.**  
 FL 5-4751 JACKSON, MISS.

---

**P. G. A. C.**  
 FL 2-4337 JACKSON, MISS.

---

Insist on the bag with the Golden Tag  
**HUBCO SAND SAMPLE BAGS**  
 Write for free sample  
 HUTCHINSON BAG CORP., HUTCHINSON, KANSAS

PROFESSIONAL CARDS

**XAVIER M. FRASCOGNA**  
 INDEPENDENT GEOLOGIST  
 P. O. Box 10653  
 Westland Station  
 Jackson 9, Mississippi  
 Phone FL 5-2956

Fleetwood 5-1528  
**WILBUR H. KNIGHT**  
 Consulting Geologist  
 901 FIRST NATIONAL BANK BUILDING  
 JACKSON 1, MISSISSIPPI

**H. MACK COX**  
 CONSULTANT  
 FL 2-7524 810 STANDARD LIFE BLDG.

**ROBERT R. PHILLIPS**  
 CONSULTING GEOLOGIST  
 FL 3-7964 DEPOSIT GUARANTY BANK BLDG.

GUSHER

CALIFORNIA COMPANY — **BRUCE SUSONG** resigned from Calco and will enter business in Indianapolis.  
**STAN BJURSTROM**, geologist, has recently joined Calco.

HUMBLE — **JIM BRYAN** transferred from Jackson to Morgan City.

OHIO — **GEORGE THOMAS**, District Geologist, transferred from Jackson to Tulsa. In Tulsa George will be on the

staff of the Division Geologist. **JOE C. WILSON** will be the new District Geologist in Jackson.

SCHLUMBERGER — **GENE BOWERS** and **RICHARD CURRIE**, Schlumberger Engineers, went with the Army Rocket and Guided Missile Agency at Red Stone Arsenal in Huntsville, Alabama.

**FREDERIC F. MELLEN** has been appointed a member of the AAPG Committee on Publication.

NEWS BULLETIN  
 P. O. Box 2607  
 Jackson, Miss.



Mississippi Geological Society NEWS BULLETIN

Mr. Robert B. Ross  
 Tenn. Gas Transm. Co.  
 Box 884  
 Jackson, Miss.



# NEWS

# BULLETIN

MISSISSIPPI GEOLOGICAL SOCIETY

VOLUME IX

NOVEMBER, 1961

NUMBER 1

## GEOLOGICAL STUDY GROUPS UNDERWAY

This year a program of special geological study groups within the Society has been organized by L. J. Ringenberg. This program was organized in response to a number of Society members who expressed a willingness to study local geological problems that are deficient in literature without violating any company security rules or competing with other individuals. Separate study groups for each area or problem were proposed to avoid the inertia of large groups. The primary purpose of each study group would be the assembling and classification of data, interpretation of this data, and finally, the formulation of conclusions. The ultimate aim of each group would be the presentation of their work before a meeting of the members of the Society. Publication of the results of the work could follow if warranted. The original proposed projects were:

1. Regional Correlations — Mississippi and Alabama
2. The Jurassic System — Stratigraphy and Structure
3. Neshoba or Central Mississippi Ridge — Stratigraphy and Structure
4. Environment of the Lower Tuscaloosa
5. Gravity and Magnetics in the southern states
6. Black Warrior Basin — the shallow and deep portions
7. Salt Domes of Mississippi and Alabama
8. Jackson Dome and Sharkey Uplift Areas
9. Desha Basin — Stratigraphy and Structure.

Of the nine proposed study groups, member response was sufficient to organize six active special geological study groups. The six groups, their membership and their current work status is as follows:

### REGIONAL CORRELATIONS

This committee has begun initial regional correlation work. Each member is compiling a correlated composite electric log for a number of areas within the state. Correlations will then be made between the various local type logs and specific correlation problems will then be chosen for detailed study.

Members of the correlation study group are: Jim Womack (Chairman), J. R. Branch, J. S. Lancaster, Tracy Lusk, D. J. Munroe, L. D. Robbins, M. F. Shelton and Joe Wilson.

### DESHA BASIN

The organization meeting of this group was held last month during which the framework and areal extent of the study was discussed. At present the members are searching for an adequate base map of the basin and flank areas. Membership of the group is comprised of Graham Hughes (Chairman), W. M. Frew, Lee Kincade and J. L. McElroy.

### JURASSIC SYSTEM

This study is primarily involved in a sample study of the Smackover formation in Mississippi. The group is actively engaged in its preliminary work of assembling work materials and knowledge. All electric logs and many sample logs of Jurassic well penetrations have been obtained as have base maps with well locations. A Jurassic bibliography is being prepared by several members. Several north-south cross-sections have already been set up and the Jurassic samples of the wells on the sections will be examined by the members of the committee. These members are: E. H. Lambert (Chairman), W. H. Moore, C. R. Sommers, L. C. Ellis, and J. Mann.

Geologists who are interested in exposure to some detailed Smackover sample examination may contact E. H. Lambert.

### BLACK WARRIOR BASIN

This group has met for organization purposes. It is currently formulating its goals and mode of study. The chairman is M.D. Horton and members are H.D. Baker, P. H. Dunn, M. Gilpin, B. Edwards III, E. D. Minihan, W. E. Sistrunk, C. H. Fry, W. A. Skees, M. L. Oxley, R. M. Byrne, R. R. Phillips and D. E. Lott.

### NESHOBA RIDGE

Chairman of this group is C. A. Barton and the membership is comprised of D. W. Layman, C. C. Humphris and D. C. Gifford.

### GRAVITY AND MAGNETICS IN SOUTHEASTERN STATES

D. E. Herlihy is chairman of this study group which is currently being organized. Additional working volunteers are currently being solicited.

### MARINE BACTERIOLOGIST TO SPEAK

Dr. Carl H. Oppenheimer, Resident Associate Professor at the Marine Laboratory, Institute of Marine Science of the University of Miami (Florida) will address the Society on microbial activities in sediments at the Society's dinner meeting on December 4.

Professional card insertions in the NEWS BULLETIN are available to individual members of the Mississippi Geological Society. The cost is \$25 for 6 consecutive issues starting with the first insertion.

## COMMITTEE REPORTS (Continued)

### NOMENCLATURE

The Nomenclature Committee recommends that the name **SOUTHEAST MOSS HILL FIELD** be given to the new producing area recently discovered by the drilling of the Marlin Exploration, Inc. #1 Haynes et al Unit, located in Section 31-6N-2W, Adams County, Mississippi.

Official completion gauge information filed with the Mississippi State Oil and Gas Board is as follows:

Completed September 18, 1961, 6½ hour test, flowed at rate of 98 barrels of oil per day plus 164 barrels water, 1/8" x 14/64" choke, gravity 32 degrees, TP 225#, GOR 140/1 (estimated) from perforations 4433-35½ in the Wilcox formation.

The Nomenclature Committee recommends that the name **CANNONSBURG FIELD** be given to the new producing area recently discovered by the drilling of the Argo Oil Corporation #1 C. W. Armstrong located in Section 37-8N-1W, Jefferson County, Mississippi.

Official completion gauge information filed with the Mississippi State Oil and Gas Board is as follows:

Completed September 4, 1961, 4 hour test, flowed at rate of 280 barrels of oil per day, 1/4" choke, 1152 MCFGPD, TP 1935#, gravity 42.9 degrees, GOR 4116/1, from perforations 10,076-86' in the lower Tuscaloosa formation.

The Nomenclature Committee recommends that the name **COLLINS FIELD** be given to the new producing area recently discovered by the drilling of the Pan American Petroleum Corp. #1 R. W. Windham, located in Section 25, Township 8N, Range 15W, Covington County, Mississippi.

Official completion gauge information filed with the Mississippi State Oil and Gas Board for this dual completion is as follows:

October 15, 1961, 24 hours, 16/64" choke, flowed 488 barrels oil, 250 MCFG, no water, 41.3° gravity, GOR 513/1, TP 900#, perforations 13,725-731 feet opposite a Rodessa Sand.

October 22, 1961, 24 hours, pumping (6" st., 14½ SPM), 217 barrels oil, no water, no gas, 31.9° gravity, perforations 13,126-131 feet opposite a Mooringsport Sand.

The Nomenclature Committee recommends that the name **MORGANS FIELD** be given to the new producing area recently discovered by the drilling of the Olin Oil and Gas Corporation (Texas Pacific Coal and Oil Company) #1 Walter Wolfe, located in Section 26-3N-2W, Hinds County, Mississippi.

Completed November 3, 1961, 24 hour test, pumped 16/64" choke, 62 barrels oil, 12.4 MCFG (est.), 20 Barrels water, 47° gravity, TP 35#, from perforations 13,008-42 feet opposite a Rodessa Sand.

### FORMATION EVALUATION STUDY GROUP ORGANIZED

Realizing that oil and gas reserves are becoming more difficult and expensive to find in commercial quantities, the Formation Evaluation Study Group has been organized to promote the proper application and interpretation of well logging and testing techniques in oil and gas exploration. The study group currently plans monthly meetings to discuss and exchange ideas on local logging problems and to keep abreast of the development of new equipment and methods of electrical log interpretation.

The next formal meeting of the Formation Evaluation Study Group will be Wednesday, December 13, at the Sun-n-Sand. The speaker for this dinner meeting will be Mr. Robert P. Alger with Schlumberger Well Surveying Corporation, who will discuss "New Logging Programs and Interpretation Techniques."

Reservations for this dinner meeting and additional information on the activities of Formation Evaluation Study Group may be obtained by contacting Don Champlin, FL 4-5703 or R. M. Campbell, FL 4-4961.

### MISSISSIPPI GEOLOGICAL SOCIETY

(Affiliated with the American Association of Petroleum Geologists  
& Gulf Coast Association of Geological Societies)

#### Executive Committee

X. M. Frascogna, Consulting Geologist — President  
L. J. Ringenberg, Consultant — Vice President  
W. F. Browning, Shell — Secretary  
L. B. Culligan, Calco — Treasurer  
R. B. Ross, Independent — Program Chairman  
R. V. Ewing, Dixie — Past President

#### News Bulletin Staff

W. M. Frew, Continental — Editor  
F. D. Molsberry, Cities Service — Assistant Editor

#### Correspondents

G. K. Anderson,	Ohio
C. D. Champlin,	Pan Am.
E. E. Luper,	Independent
J. R. McElroy	Calco
W. E. Taylor,	Union Producing

### TREASURER'S REPORT

OCTOBER 1 THROUGH OCTOBER 31, 1961

#### On Hand October 1

Checking Account — Deposit Guaranty \$1,505.43  
Savings Account — First Federal 2,261.09

#### INCOME AND EXPENSE STATEMENT

	Income	Expenses
<b>Publications</b>		
Receipt from Sales	\$311.86	
Publication Price List		\$ 60.32
Mailing Supplies		11.44
Sales Tax		2.60
Commission to A.A.P.G.		31.35
Advertising Expense G.C.A.G.S.		29.30
<b>Newsletter</b>		
Printing (Aug. Issue)		109.20
Advertising	150.00	
<b>Photo-Directory</b>		
Mailing Notices		24.08
<b>Entertainment Committee</b>		
Meeting Expense		
Chits		1.00
Projection Equipment Rental		13.78
Refreshments (Sept. & Oct.)		230.00
Meeting Notices (Sept. & Oct.)		42.44
Sept. Meeting	8.35	
<b>Administrative</b>		
Misc. Adm. Expense		38.64
Dues	121.00	
<b>TOTALS</b>	\$591.21	\$594.15

#### On Hand — October 31

Checking Account \$1,502.49  
Savings Account 2,261.09  
Paid Membership 1961-62 as of October 31 -- 334.

### COMMITTEE REPORTS

#### PROGRAM COMMITTEE:

December 4	6:30 PM	Sun-n-Sand
Speaker:	Dr. Carl Oppenheimer Resident Assoc. Professor Institute of Marine Science University of Miami Miami, Florida	
Subject:	Microbial Activities in Sediments	
December 18	12:00 noon	Sun-n-Sand
Speaker:	George Winston Humble Oil & Regining Company Jackson, Mississippi	
Subject:	The Hebgen Lake Earthquake Hebgen Lake Area, Montana	

## PHOTO DEADLINE

Those who have not had their picture taken for the Photo Directory have procrastinated too long. November 18th was the deadline for pictures to be taken in Larry Robinson's Studio at the corner of Lamar and Pearl Streets in Jackson.

If you have had your picture taken be sure to pick up and RETURN your proofs.

Out-of-town members may send a 2 x 3 inch glossy print to Julius Ridgway, P. O. Box 187, Jackson, Mississippi. Prints from out-of-town members must be received by December 1st.

## MEMBERSHIP QUALIFICATIONS

The Advisory Board plans to review the subject of membership qualifications of the Mississippi Geological Society.

The points of specific interest include:

1. Review membership requirements under the present constitution.
2. Review the recent analysis of the subject by the A.A.P.G.
3. Possible establishment of new and more rigid requirements, the enactment of which will improve the quality and morale of our membership and generally enhance the standing of our Society and profession.
4. Review the role of the Associate Member within the Society, qualifications of such membership and related points.

## G.C.A.G.S. AWARDS

The winning authors at the Eleventh Annual G.C.A.G.S. meeting at San Antonio have been announced by the Judging Committee.

1. Rayburn D. Ocamb "Growth Faults of South Louisiana"
2. Donald I. Andrews "Indigenous Pleistocene Production in Offshore Louisiana"
3. R. P. Fietz, K. R. Scott, W. E. Hayes "Geology of the Eagle Mills Formation".

R. P. Fietz is a member of the Mississippi Geological Society and is associated with Humble in Hattiesburg, Mississippi.

## YUCATAN FIELD TRIP

The N. O. G. S. is planning a field trip to Yucatan, Mexico. The group will leave Moisant via Pan-Am jet on Thursday, January 25, 1962, at noon, and arrive in Merida approximately 1 hour and 20 minutes later. The return trip will depart Merida, Monday, January 29, 1962, at approximately 6 P. M.

Dr. Grover Murray, Professor of Geology at L.S.U., is preparing a guide book for the trip. Headquarters will be in Merida and trips will be taken to the north shore between Progreso and Campeche where various sedimentological environments and features, including beaches of calcareous sand, recent marine sedimentation, and well developed lagoons in which salt evaporation is being locally carried on, will be observed.

The trip will also include visits to the Mayan Ruins at Uxmal and Che-Chienitza where Karst topograph, cenotes and related features will be seen.

The cost will be approximately \$150.00 per person, which includes:

1. Round trip air fare via Pan-Am jet to Merida.
2. All hotel expense and some meals.
3. Ground transportation.
4. Guide book and registration.

In order to obtain a tourist card, it is necessary to have some proof of birth, such as passport, birth certificate, etc., and proof of a smallpox shot within the last three years.

If you are interested, please contact Al Gilreath, 524-8623, for further information and reservations. PLEASE DO SO IMMEDIATELY.

## FLEMING W. BROWNING ELECTED SECRETARY

Fleming W. Browning Shell Oil Company, was elected Secretary of the Mississippi Geological Society in a special election at the Society's first fall meeting. The special election filled the vacancy left by the transfer of Armond T. Ricci to Shreveport, Louisiana.

## PRESERVE THOSE CORES AND SAMPLES

STOP! Don't kick that core off the pipe rack and don't throw those sample sacks in the mud pit.

Telephone Bill Moore (EM 2-1056) and he will arrange to have the core and/or samples picked up and returned to Jackson for permanent storage by the Mississippi Geological Survey.

## GUSHER

### THE CALIFORNIA COMPANY —

Bill Thomas, geologist, transferred from Production, New Orleans, to Exploration, Jackson.

The following new employees have recently reported to work in the Jackson office:

Elwood Ruhl, geologist, Production  
Wayne Gunderson, geologist, Production  
Dick Byrne, geologist, Exploration  
Lyman Williams, geologist, Exploration  
Dave Fruhling, geophysicist, Exploration

### CONTINENTAL OIL COMPANY —

Don Brown, geologist, transferred from Jackson to El Campo, Texas

Bill S. McGowen, geologist, transferred from Lafayette to Jackson, Mississippi

Robert Arrington, geologist, transferred from Jackson to Buenos Aires, Argentina

Dwight A. Free, geologist, resigned to accept position with the TXL Oil Corp. in New Orleans.

### LION OIL COMPANY —

Lester Ringenberg, geologist, has left Lion to become an Independent.

Dee Layman, geologist, transferred from Jackson to Lafayette, Louisiana.

### MOBIL OIL COMPANY —

A. T. Ricci, geologist, transferred from Jackson to Shreveport, Louisiana.

B. B. Tettleton, geologist, transferred from Jackson Exploration District to Lafayette Producing District.

### P.G.A.C. —

D. M. Muir transferred from Jackson to Houston, Texas.

### SHELL OIL COMPANY —

Steward Welch, geologist, attended seminar in Houston for past three months.

### SINCLAIR —

Paul Laird, geologist, transferred to Jackson from Houston.

### TEXACO —

Bert Scales, geologist, reported to work in Jackson from the University of Nevada.

E. S. Gelson, geologist, transferred to Jackson from Dallas.

H. W. Davis, geologist, transferred from Jackson to Dallas.

### UNION PRODUCING —

E. R. Osburn — promoted to Assistant District Manager for Union Producing Company and United Gas Pipeline Company in Houston District.

Claude Smith has taken over District Geologist duties for Union Producing in Jackson District.


**NEWS BULLETIN SPONSORS**

**BAROID WELL LOGGING SERVICE**  
 FL 2-6629 JACKSON, MISS.

---

**SCHLUMBERGER WELL SURVEYING CORP.**  
 FL 2-8589 JACKSON, MISS.

---

**EDGAR TOBIN AERIAL SURVEYS**  
 Capitol 3-6203  SAN ANTONIO, TEXAS

**SUN-n-SAND MOTOR HOTEL**  
 401 N. LAMAR FL 4-2501

---

**WELLCORE CO.**  
 428-1466 LAUREL, MISS.  
 TOMMY TOMLINSON

---

**P. G. A. C.**  
 FL 2-4337 JACKSON, MISS.

**PROFESSIONAL CARDS**

**XAVIER M. FRASCOGNA**  
 INDEPENDENT GEOLOGIST  
 P. O. Box 10653  
 Westland Station  
 Jackson 9, Mississippi  
 Phone FL 5-2956

**ROBERT R. PHILLIPS**  
 CONSULTING GEOLOGIST  
 FL 3-7964 DEPOSIT GUARANTY BANK BLDG.

**H. MACK COX**  
 CONSULTANT  
 FL 2-7524 810 STANDARD LIFE BLDG.

**THIS COULD BE YOUR PROFESSIONAL CARD!**

**NEW ACTIVE MEMBERS**

- R. D. Alexander, California Co.
- Robert Beall, Humble
- S. T. Bjurstrom, California Co.
- J. R. Branch, Shell
- D. B. Brasfield, Humble
- J. D. Broughton, U.S.A.E.W.E.S.
- R. M. Byrne, California Co.
- C. F. Dougherty, Pan Am
- Bob S. DuBose, Humble
- R. P. Fietz, Humble
- C. M. Funk, Humble
- W. C. Hooper, Co-op. Ref. Ass.
- Max E. Judy, Sun
- C. E. Kallsen, Ohio Oil
- C. C. Keating, Humble
- P. E. LaMoreaux, Ala. Geol. Sur.
- L. R. Laughbaum, Texaco
- D. E. Lott, California Co.
- P. N. Mason, Pan Am.
- W. E. Moore, California Co.
- A. G. Murphy, Humble
- L. A. Register, Humble

- D. O. Reese, Pan Am.
- P. P. Reeves, Loc. Spl. Ser.
- F. D. Richardson, Humble
- D. O. Rimsnider, California Co.
- K. A. Ring, Shell
- Vincent Scoper, Humble
- Kemper Scott, Humble
- R. E. Schmiege, California Co.
- H. R. Shaffer, Pan Am.
- J. D. Sistrunk, Marr Co.
- K. T. Smith, Pure Oil
- Earl R. Swett, Skelly
- W. E. Taylor, Union Prod. (Assoc. Member)
- N. L. Varnado, Shell
- J. W. West, Humble
- J. R. Willis, Pan Am.
- W. H. Wise, Humble

**NEW ASSOCIATE MEMBERS**

- H. L. Arnauld, Pan Am
- J. S. Demint, Pan Am
- J. C. Griffith, California Co.
- D. W. King, Rig Time
- M. L. Roberts, Marr Co.

**NEWS BULLETIN**

P. O. Box 2607  
 Jackson, Miss.



**Mississippi Geological Society NEWS BULLETIN**

# NEWS

# BULLETIN

MISSISSIPPI GEOLOGICAL SOCIETY

VOLUME IX

JANUARY, 1962

NUMBER 2

## A.A.P.G. DISTINGUISHED LECTURER TO SPEAK



JOHN C. LUDLUM

Dr. John C. Ludlum, Professor of Structural and Economic Geology, University of West Virginia, and Distinguished Lecturer, will address a meeting of the Mississippi Geological Society on Wednesday, January 24, 1962. The meeting will be held at 12:00 noon in the Robert E. Lee Hotel.

Dr. Ludlum will lecture on "Prospects and Structural Problems of Exploration for Natural Gas in the Appalachian Area." This talk discusses information found in the second phase of exploration and production in the Appalachian Basin which must be considered in the third phase of deep exploration which has recently begun.

Dr. Ludlum received his PhD degree in 1942 from Cornell University. He has done a considerable amount of consulting work with major oil companies as well as the State of West Virginia.

Dr. Ludlum has 28 articles, abstracts, survey publications and manuals in print. He is a member of several honorary societies, as well as active in the American Institute of Mining, Metallurgical and Petroleum Engineers, A. A. P. G., A. P. I., Association of Geology Teachers, G. S. A., Society of Economic Geologists and West Virginia Academy of Science.

### Abstract of Talk

Drilling during the current second phase of exploration and production in the Appalachian Basin has provided structural information which must be considered in the third phase of deep exploration which has recently been initiated. Classical textbook descriptions and generalizations are misleading unless qualified and modified in light of existing but poorly publicized and relatively new information.

There is a Siluro-Devonian mobile zone beneath the Appalachian Plateaus which approaches the structural pattern and complexity of the surface structures of the Valley and Ridge province to the southeast. The less-complex post-Devonian surface anticlines of the Plateaus therefore may not be reliable guides to the position of the disharmonic Siluro-Devonian structures. There is even the possibility that productive sub-surface highs will be found beneath surface lows to mark the terminal discovery period of second phase production.

Ramp-type grabens are along the axes of the Siluro-Devonian anticlines in some areas, whereas southeast-dipping thrust faults are characteristic of others. Experimental analogies exist for explaining the origin of these patterns from either lateral or vertical stresses.

There appears to be no sudden termination of "southern type" thrust faulting northeastward along the trend of the Appalachians in southeastern West Virginia or neighboring Virginia.

Conformity of Siluro-Devonian structures to the Cambro-Ordovician structures which are the main targets of the third phase exploration has not been established. With known vertical and lateral disharmonies, it appears that intelligent completion of prospecting of the Siluro-Devonian structures, and location of third phase prospects in the Cambro-Ordovician must depend on successful adaptation of geophysical prospecting to Appalachian conditions.

### RECENT PUBLICATION

**Development and Future Possibilities on the Jurassic in Northeast Texas**, by R. W. Eaton, a 15 page paper-booklet complete with structure, isopach, facies maps and cross sections. This paper was originally published in February, 1961. In less than 8 months it was out of print. It has been brought up-to-date as of October 1, 1961, and reprinted. Several significant Jurassic discoveries have developed since the first publication and have been included in the second. Copies may be ordered from Alex Harvey, Box 2025, Tyler, Texas. Price: \$1.50 plus 10 cents per copy for postage. (Make checks payable to East Texas Geological Society.)

**NOMENCLATURE**

Shell #1 Board of Supervisors, SE NW Section 16-4N-8E, Pike County, Mississippi, was completed on December 22, 1961, from perforations opposite the Little Creek Sand of the Lower Tuscaloosa formation. Official completion gauge information filed with the Mississippi Oil and Gas Board is as follows:

12/64" choke, FARO 428 BOPD, 265 MCFGPD, no water, gravity 40 degrees, GOR 619/1, TP 1030#, perforations 10,706-24.

It is the consensus of opinion of the members of the Nomenclature Committee that due to the proximity of this well to Little Creek production and the lenticularity of Lower Tuscaloosa sands that additional drilling and production history should be considered prior to recognizing this area as anything other than an extension to the Little Creek Field. If there may be shown at a later date a definite separation indicated by additional drilling in this general vicinity, the Committee will be glad to re-examine the area with the thought in mind of giving it a new field designation. (December 28, 1961)

**MISSISSIPPI GEOLOGICAL SOCIETY**

(Affiliated with the American Association of Petroleum Geologists & Gulf Coast Association of Geological Societies)

**Executive Committee**

- X. M. Frascogna, Consulting Geologist — President
- L. J. Ringenberg, Consultant — Vice President
- W. F. Browning, Shell — Secretary
- L. B. Culligan, Calco — Treasurer
- R. B. Ross, Independent — Program Chairman
- R. V. Ewinø, Dixie — Past President

**News Bulletin Staff**

- W. M. Frew, Continental — Editor
- F. D. Molsberry, Cities Service — Assistant Editor

**Correspondents**

- G. K. Anderson, Ohio
- C. D. Champlin, Pan Am.
- E. E. Luper, Independent
- D. O. Rimsnider, Calco
- W. E. Taylor, Union Producing

**TREASURER'S REPORT**

**MISSISSIPPI GEOLOGICAL SOCIETY  
DECEMBER 1 — DECEMBER 31, 1961**

**On Hand December 1**

- Checking Account — Deposit Guaranty \$1,684.31
- Savings Account — First Federal 2,261.09

**INCOME AND EXPENSE STATEMENT**

**Publications**

- Receipts from Sales \$254.68
- Shipping Supplies \$ 13.35
- Handling Expense 45.37
- Advertising Postage 8.00
- Advertising Commission AAPG 23.70
- Postage Refund 2.76

**Newsletter**

- Mailing (Nov. Vol. IX No. 1) 20.00

**Meetings**

- Refreshments 22.20
- Speaker expense (publicity 12-4-61) 1.76
- Projector Rental 12-4-61 9.36
- Mailing Notices 12-4-61 20.86
- Mailing Notices 12-18-61 21.25

**Administrative**

- Dues 18.00
- Secretarial Services 9.37
- Postage 4.00

**TOTALS** \$294.88 \$179.78

Excess Income over Expenses — \$115.10

**On Hand — December 31 —**

- Checking Account \$1,799.41
- Savings Account 2,261.09

Paid Membership 1961-62 as of December 31 — 374

L. B. CULLIGAN  
TREASURER

**COMMITTEE REPORTS**

**PROGRAM COMMITTEE**

- January 24** 12:00 noon Robert E. Lee Hotel
- Speaker Dr. John C. Ludlum
- Prof. of Structural and Economic Geology
- University of West Virginia
- Subject "Prospects and Structural Problems of
- Exploration for Natural Gas in the
- Appalachian Area."
- February 5** 6:30 PM Sun-N-Sand
- Speaker "Under Negotiation"
- Subject " " "
- March 5** 6:30 PM Sun-N-Sand
- Speaker F. F. Mellen,
- Consultant, Jackson, Miss.
- Subject "Coffee Sand"
- April 2** 6:30 PM Sun-N-Sand
- Speaker E. H. Rainwater
- Shell Oil Co.
- Houston, Texas
- Subject "Structure and Stratigraphy of Mississippi"

**MISSISSIPPI GEM AND MINERAL SOCIETY  
3RD ANNUAL SHOW**

By Baxter L. Smith

On the 17th and 18th of February, 1962, the Mississippi Gem and Mineral Society will sponsor its Third Annual Gem and Rock Show. This exhibition will be held in the Agricultural Building at the Mississippi State Fair Grounds. At the show there will be competitive exhibits of mineral specimens, rocks, fossils, and gemstones. For those who might be interested in "how-to-do-it," some of the dealers and local collectors will demonstrate such operations as: slabbing, cutting and polishing of cabachons. For the more advanced and ambitious collectors there will be demonstrations of faceting. This is the operation of cutting the facets on such stones as garnet, ruby, aquamarine, etc., which many of you are familiar with as they are probably your birthstones.

The feature attraction at this year's show will be a gold replica of Aaron's Breastplate. One does not have to be a Bible scholar to realize and appreciate the significance and interest this display will create. Mr. A. Paul Davis of St. Louis did all the gold smithing and lapidary work on the breastplate and will be in attendance to describe it and tell its story. The Mississippi Gem and Mineral Society has gone to considerable trouble and expense to bring this worthwhile and significant exhibit to Jackson. Examples of the original gem stones, twelve in all, representing the twelve tribes of Israel, are mounted in the breastplate.

The Mississippi Geological Society will also have a display at the Rock Show, and will have someone in attendance throughout the show to explain the many interesting exhibits.

The Mississippi Gem and Mineral Society is a non-profit organization, incorporated under the laws of the State of Mississippi and dedicated to the dissemination of knowledge of, and aid to schools and individuals, concerning rocks, minerals, and fossils as a part of our cultural heritage. The members of the Mississippi Gem and Mineral Society cordially invite every member of the Mississippi Geological Society to come to the show and bring their children. Those who are interested in collecting specimens will have an opportunity to find many worthwhile additions to their collections. Don't forget the dates:

February 17th: 10:00 AM to 10:00 PM

and

February 18th: 12:00 PM to 6:00 PM

Admission: Adults 50c, Children 25c



## LIBRARY AID SOUGHT

The following letter should be of interest to all Society members who have been unable to locate an old geological publication for reference.

Dear Mr. Frascogna:

The limited geological literature available in Jackson is an unnecessary handicap to the petroleum industry in Mississippi. I suggest that the Mississippi Geological Society study this undesirable condition of local libraries and take whatever remedial action deemed necessary.

The municipal library receives current bulletins of the Geological Society of America, American Association of Petroleum Geologists, and Journal of Geology. Only the past few years' issues are available for reference, however. State survey publications from adjacent states are limited and United States Geological Survey publications are non-existent.

The Geological Society has been instrumental in establishment of the municipal library's present petroleum section. Most of the geological and petroleum volumes, as well as professional bulletins, were donated to the library in 1955 by the Society. These were originally the Society's library (200-300 volumes). The Society has taken little interest in further improvement since this initial commendable contribution.

I recommend that the missing back issues of the A.A.P.G. and G.S.A. bulletins be secured for at least the past 25 years. Exchange agreements should be made through the Mississippi Survey and nearby State surveys to obtain their publications at no cost to the City. U.S.G.S. publications may be secured through a local congressman at no cost to the depository system.

Several methods exist in which the Society may improve local municipal or Millsaps College facilities:

1. The library staff may be unaware of the need for improvement and eager to improve them from library funds.
2. Purchases may be made directly from the Society's treasury either in a single grand purchase or small annual additions.
3. Private libraries may be donated by interested individuals.
4. Individuals may contribute funds to the library or Society for additions.
5. Mississippi Geological Survey may have duplicates which they would eagerly contribute for establishment of a second major geological depository in the State.
6. A small, special assessment to Society membership may be possible to build up a library fund.
7. Contribution of back issues may be possible from the respective national organizations.
8. Petroleum companies may contribute duplicates in their local office libraries.

This is worthy project and an excellent opportunity for the Society to further geological work and the petroleum industry in Mississippi. Having 373 Society members and approximately 70 geophysicists in and around Jackson, the demand for occasional reference to geological literature must be great. It should be readily available.

If the Society will consider this recommendation only upon presentation of a formal motion, I shall be happy to do so.

Respectfully,  
JOHN MANN

The Society is indebted to Mr. Mann for bringing the library to its attention. Effective January 9, 1962 a Special Committee (Geological Library) under the volunteer chairmanship of Mr. Mann, will investigate the various courses of action noted in the above letter. One man can not do it alone.

Members interested in giving assistance please contact John Mann, The California Co., FL 4-4961.

—o—  
**SUPPORT OUR SPONSORS**

## TOP TOURNAMENT BOWLERS

The Jackson Petroleum Bowling League sponsored a very successful Individual Holiday Tournament on December 28th. Credit for organizing the Tournament goes to League Secretaries Ed Trapp and C. J. Osborne. Cash prizes were awarded the top six bowlers and additional prizes were contributed by Bowl-O-Rama and Sugar Bowl Lanes. Bowl-O-Rama gave a bowling ball and the Sugar Bowl Lanes contributed a bowling ball bag. The ball and bag were used as door prizes.

Total entries: 66

1st. place	G. Isbell
2nd. place	R. Jones
3rd. place	B. Troutman
4th. place	E. Robertson
5th. place	A. Blanton
6th. place	J. Williams

Bowl-O-Rama Bowling Ball — E. M. Pincomb  
Sugar Bowl Lanes Bag — D. Williams

## GOLF LEAGUE FINALS

The Jackson Petroleum Golf League finished its initial season under the guidance of Chairman Tom Moore and Secretary Ellwood Harris. Eight companies entered teams: Calco, Conoco, Lone Star, Mobil, Pan American, Shell, Sun and Unitd Gas. Trophies were awarded the winner and runner-up teams plus nine other various individual and team trophies. Final standings and prizes awarded are as follows:

1st. place	Sun Oil Company
2nd. place	Continental Oil

### Team Trophies

1st. Low Gross	—	Shell
1st. Low Net	—	Calco
2nd. Low Net	—	Conoco
3rd. Low Net	—	Lone Star

### Individual Trophies

1st. Low Gross	—	Andy Schurtz
1st. Low Net	—	Marvin Oxley
2nd. Low Net	—	Dwight Free
3rd. Low Net	—	J. A. Ramsdell

Most Improved Golfer — Jerry Anderson

## NEW G.C.S.G.S. OFFICERS

The Gulf Coast Association of Geological Societies has elected officers for the year 1962:

T. H. Philpott	Olin Oil & Gas Corporation	President
J. C. Byrd	Jones & O'Brien	Vice President
Ken D. Soule	Pan American Petroleum	Treasurer
H. O. Woodbury	California Oil Company	Secretary

Duward W. Dassow of San Antonio, Texas is the Past president.

The Gulf Coast Association of Geological Societies will hold their Twelfth Annual Meeting in New Orleans Oct. 31 - Nov. 3, 1962.

Professional card insertions in the NEWS BULLETIN are available to individual members of the Mississippi Geological Society. The cost is \$25 for 6 consecutive issues starting with the first insertion.


**NEWS BULLETIN SPONSORS**

**BAROID WELL LOGGING SERVICE**  
 FL 2-6629 JACKSON, MISS.

---

**SCHLUMBERGER WELL SURVEYING CORP.**  
 FL 2-8589 JACKSON, MISS.

---

**EDGAR TOBIN AERIAL SURVEYS**  
 CApitol 3-6203  SAN ANTONIO, TEXAS

**SUN-n-SAND MOTOR HOTEL**  
 401 N. LAMAR FL 4-2501

---

**WELLCORE CO.**  
 428-1466 LAUREL, MISS.  
 TOMMY TOMLINSON

---

**P. G. A. C.**  
 FL 2-4337 JACKSON, MISS.

**PROFESSIONAL CARDS**

**XAVIER M. FRASCOGNA**  
 INDEPENDENT GEOLOGIST  
 P. O. Box 10653  
 Westland Station  
 Jackson 9, Mississippi  
 Phone FL 5-2956

**ROBERT R. PHILLIPS**  
 CONSULTING GEOLOGIST  
 FL 3-7964 DEPOSIT GUARANTY BANK BLDG.

**THIS COULD BE YOUR PROFESSIONAL CARD!**

**GUSHER**

- Argo Oil Company  
 J. TERRY, geologist, resigned to become an Independent Geologist.
- The California Company  
 A. J. Hrby, geologist, transferred from Billings, Montana to Exploration, Jackson.
- D. K. CAMERON, geologist, transferred from New Orleans to Exploration, Jackson.
- H. C. POTTER, geologist, transferred from Trinidad to Geophysical, Jackson.
- D. H. FRUHLING, geophysicist, has entered the Armed Forces.
- Continental Oil Company  
 WILLIAM HARE, geologist, transferred from Durango, Colorado to Jackson.
- Gulf Oil Company  
 J. C. PERRYMAN, geologist, resigned to accept employment in Naples, Florida.

- Mobil Oil Company  
 TIM BULLARD, geologist, transferred from Republic National Gas, Hugoton, Kansas to Jackson.
- Pan American Petroleum Corp.  
 PAT N. MASON, geologist, resigned to become an Independent Geologist.
- Union Producing Company  
 RILEY HAGAN, geological scout, transferred from Monroe, Louisiana, to Jackson.

**NEW ACTIVE MEMBERS**

- Thomas C. Buchanan, Kinsey Interests
- Robert H. DeKay, Consultant
- W. R. Hadaway, Pepway Barge Corporation
- Samuel R. Marsh, Humble
- Bill S. McGowen, Continental Oil Co.
- Hal M. Townsend, Ancore Corporation
- George O. Winston, Humble

**NEW ASSOCIATE MEMBER**

- Marlin L. Roberts, Marr Company

**NEWS BULLETIN**

P. O. Box 2607  
 Jackson, Miss.



**Mississippi Geological Society NEWS BULLETIN**

# NEWS

# BULLETIN

MISSISSIPPI GEOLOGICAL SOCIETY

VOLUME IX

MARCH, 1962

NUMBER 3

## Society Member Earns Ph.D.



Charles R. Kolb, Chief of the Geology Branch, U. S. Army Engineer Waterways Experiment Station, was awarded his Doctorate in Geology at Spring Commencement on January 30 at Louisiana State University.

Kolb is known throughout the state for his talks on geology to various civic and professional groups in Vicksburg, Clinton, and Jackson during the past five years, often on the loess soil and on the mastodons found within the loess of the Vicksburg area. He is also known for his participation in the activities of the Little Theatre and Showboat.

For many years the Geology Branch of the Waterways Experiment Station, sponsored by the various districts of the Lower Mississippi Valley Division of the Corps of Engineers, has been in the forefront developing the geologic history of the Alluvial Valley of the Mississippi River from Cairo, Illinois to the Gulf of Mexico and in applying this knowledge to engineering problems along the river.

Kolb's dissertation, one of the requirements for a Doctor of Philosophy degree, concerns the lower 200 miles of the river and is entitled "**Distribution and Engineering Significance of Sediments Bordering the Mississippi from Donaldsonville to the Gulf.**"

The ever-increasing rate of industrial and cultural development along the banks of the river during the past two decades and the very rapid development along this lower portion of the river in particular have focused attention on the economic potential of this region of the United States. Industrial site construction, the design of

navigation and flood control structures, and bank stabilization programs require an adequate knowledge of the soils which compose the bed, banks and near-bank areas of the river plus a knowledge of the engineering significance of these soils. Soils bordering the river between Donaldsonville (just south of Baton Rouge) and the Gulf consist principally of deltaic plain deposits left behind by the growth and abandonment of several of the past deltas of the Mississippi.

Among the interesting features of the area which have been carefully contoured on the maps and figures accompanying Kolb's dissertation is the Pleistocene surface, an ancient Ice-age floodplain of the Mississippi which now lies at a depth of from 10 to 100 feet below the present surface and forms one of the principal horizons to which piles supporting larger buildings extend.

Another feature of interest is a sandy beach ridge about 20 miles long which lies principally beneath the city of New Orleans and roughly parallels the present shore line of Lake Pontchartrain. This sandy beach is as much as 40 feet thick in places and reaches to within a foot or so of the surface in City Park. Signs of habitation left behind by ancient (2000-2500 years old) Indian cultures have been found on this buried sand beach which once paralleled the shore line of a much larger Gulf of Mexico.

Kolb worked on a part-time basis with the Geology Branch of the Waterways Experiment Station while attending Louisiana State University and began full-time employment with the branch upon graduation. Except for a one-year stay in Chile in 1950, he has worked continually with the Geology Branch and was made Chief in 1956.

### RECENT PUBLICATIONS

Two recent publications of the Louisiana Geological Survey which have information useful to geologists working in Mississippi are:

1. Geological Bulletin No. 35 — "Genesis and Palentology of the Mississippi River Mudlumps" -----\$1.00
2. Geological Bulletin No. 38 — "The Paly-nologic Age of Diapiric and Bedded Salt in the Gulf Coastal Province -----\$1.00

Copies may be obtained from the Louisiana Geological Survey, Box 8847, University Station, Baton Rouge.

## MISSISSIPPI GEOLOGICAL SOCIETY

(Affiliated with the American Association of Petroleum Geologists  
& Gulf Coast Association of Geological Societies)

### Executive Committee

X. M. Frascogna, Consulting Geologist — President  
L. J. Ringenberg, Consultant — Vice President  
W. F. Browning, Shell — Secretary  
L. B. Culligan, Calco — Treasurer  
R. B. Ross, Independent — Program Chairman  
R. V. Ewing, Dixie — Past President

### News Bulletin Staff

W. M. Frew, Continental — Editor  
F. D. Molsberry, Cities Service — Assistant Editor

### Correspondents

G. K. Anderson,	Ohio
C. D. Champlin,	Pan Am.
E. E. Luper,	Independent
D. O. Rimsnider,	Calco
W. E. Taylor,	Union Producing

## TREASURER'S REPORT

**On Hand February 1**  
Checking Account — Deposit Guaranty \$1,650.13  
Savings Account — First Federal 2,306.61

### INCOME AND EXPENSE STATEMENT

Publications	Income	Expense
Receipts from sales	\$166.00	
Adv. Gem & Mineral Show		\$ 25.00
Handling & Service		13.29
<b>Newsletter</b>		
Mailing (Jan. Vol. IX No. 2)		20.15
<b>Meetings</b>		
Refreshments (2-5-62)	17.80	
Mailing Notices (2-5-62)		21.49
Projector Rental		9.36
Meeting 2-19-62 Bal. due		7.74
Speaker (Local expense — Ludlow 1-24-62)		28.27
<b>Field Trip (1962 — North Arkansas)</b>		
Advertising	200.00	
Stationary Supplies		62.41
<b>Administrative</b>		
Dues	12.00	
Exhibit Sign		20.00
Secretarial Service		14.79
Miscellaneous		10.71
<b>TOTALS</b>	\$395.90	\$233.21
Income over expenses this month	\$1 62.69	
Income over expenses this month	\$162.69	

### On Hand — February 28, 1962

Checking Account \$1,812.82  
Savings Account 2,306.31  
Paid Membership 1961-62 as of Feb. 28 385

## COMMITTEE REPORTS

### PROGRAM COMMITTEE:

April 2, 1962 6:30 PM King Edward Hotel  
Speaker: "Film"  
Subject: Operation Abolition  
Land and Geophysical Societies and all wives invited  
April 19, 1962 12:00  
Subject: Business Meeting and Nominations  
May 8, 1962 6:30 PM Sun-N-Sand  
Subject: Presentations of awards and reports  
May 31, 1962 5:30 PM Milner's Lodge  
Subject: Election and Beer Bust

### LIBRARY COMMITTEE:

The Society at the request of the Executive Committee, has sent copies of the Red Books to high school libraries in Jackson, Laurel, Meridian, Hattiesburg, Gulfport, Biloxi, Vicksburg and Natchez.

These contributions are designed to further goodwill toward the industry and create interest in the Sciences. It is planned to augment this program in the future by including other schools.

## NOMENCLATURE

The Nomenclature Committee recommends that the name NORTH PELLUCID BAYOU FIELD be given to the new producing area recently discovered by the drilling of the Griffin and Keary #B-1 U. S. A., located in Section 52-5N-1W, Adams County, Mississippi.

Official completion gauge information filed with the Mississippi State Oil and Gas Board is as follows:

Completed December 21, 1961, 24 hour test, 20/64" choke, flowed 72 barrels oil, 31 barrels water, gravity 27.5°, TP 100#, from perforations 3990-91½' in the Sparta formation.

The Nomenclature Committee recommends that the name EAST GLADING FIELD be given to the new producing area recently discovered by the drilling of the Larco Drilling Company #1 E. F. Chapman, located in Section 14-2N-6E, Amite County, Mississippi.

Official completion gauge information field with the Mississippi State Oil and Gas Board is as follows:

Completed January 15, 1962, flowing 8/64" choke, at rate of 181 barrels oil, 335 MCFG, no water, GOR 1850/#1, gravity 42.3°, TP 2350#, from perforations 11,387-90' in the Lower Tuscaloosa formation.

The Nomenclature Committee recommends that the name CADILLAC FIELD be given to the new producing area recently discovered by the drilling of the Albert M. Stall #1 Krauss, located in Section 52-8N-1E, Jefferson County, Mississippi.

Official completion gauge information filed with the Mississippi State Oil and Gas Board is as follows:

Completed December 28, 1961, 10/64" choke, FARO 300 BOPD, 496.5 MCFGPD, GOR 1655/1, 43° gravity, no water, TP 2450#, from perforations 10,445-48' in the Lower Tuscaloosa formation.

## ELECTION TIME NEARS

The 1962 Nominating Committee has been appointed to select a slate of candidates for each elective office of the Society. This slate of candidates will be presented to the Society membership at the second and last regular meeting in April at which time additional candidates for each office may be nominated from the floor. The members of the Nominating Committee are W. A. Skees, Chairman; D. C. Davis, M. R. Harris, H. E. Karges, E. D. Minihan, and W. D. Lynch.

## REMINDER TO ALL COMMITTEES

All committees are reminded that final reports will be required before the close of the Society year. Chairmen are strongly urged to finalize or prepare progress reports and recommendations NO later than May 1, 1962.

## NEW DIST. REP.

Rudy Ewing was elected to serve as District A.A.P.G. Representative, Mississippi District. His term will begin after the adjournment of the 1962 annual convention and will end with the adjournment of the 1964 convention. The duties of District Representative includes service on the Association's Business Committee and determining the eligibility of candidates for membership.

## FIELD TRIP

DON'T forget the M.G.S. field trip to the Paleozoic area of western and northwestern Arkansas May 3 - 6, 1962. The participants will be able to collect mineral and rock specimens in the famous Magnet Cove area and observe several nearby mining operations; study and collect from the outcrop of the Ouachita Mountains; have a joint evening meeting with the Fort Smith Geological Society; and traverse the Arkansas Valley (Arkoma Basin) and the southern flank of the Ozark Highlands (Boston Mountains).

Transportation will be by chartered buses equipped with loudspeakers so the bus guides can maintain a running commentary of the roadside geology. Total costs for the trip, including registration, transportation, two box lunches, two dinners and guidebook, will be approximately \$34.00. Hotels and 3 meals will be handled individually. Contact B. L. Smith, Sun Oil Company, P. O. Box 850, Jackson, Mississippi for additional information.

## A.A.P.G. ANNOUNCES 1962 OFFICERS

Robert E. Rittger, division chief geologist, Sun Oil Co., Dallas, Texas, will become the 46th president of The American Association of Petroleum Geologists on March 29, as announced today by Mason L. Hill, president of the Association. Serving with him on the 1962-63 Executive Committee of the world's largest geological organization will be Orlo E. Childs, director, exploration projects group, Phillips Petroleum Co., Denver, as vice-president; Mason L. Hill, manager of exploration, Richfield Oil Corp., Los Angeles, as past-president; Robert E. King, chief exploration geologist, American Overseas Petroleum Limited, New York, New York, as secretary-treasurer; and Grover E. Murray, Boyd professor of Geology, Louisiana State University, Baton Rouge, in a re-elected term as editor.

The new slate of officers will assume the responsibility of directing the 15,900 member organization at the close of the 47th annual meeting of the Association, to be held at the fairmont Hotel, San Francisco, Calif., March 26-29.

Retiring members of the present A.A.P.G. Executive Committee are past-president Ben H. Parker, Frontier Refining Co., Denver; vice-president J. Ben Carsey, consultant, Houston; and secretary-treasurer George V. Cohee, U. S. Geological Survey, Washington, D.C.

John L. Ferguson, consultant, served as chairman of the ballot committee. Other Tulsa members of the committee were Bill O. Andress, consultant; Robert Arndt, T.U. geology department; Edmund T. Benson, Service Pipe Line Co.; Garth Gaylor, Oil Capitol Corp.; L. W. Clark, Amerada Petroleum Corp.; Noel Evans, consultant; and Andrew Gilmour, consultant.

## A.A.P.G. BUSINESS AGENDA

The A.A.P.G. Business Committee is scheduled to meet in Room 401, Civic Auditorium, Monday March 26, 1962 at 8:30 AM in San Francisco. A tentative agenda has been announced which includes the following subjects:

1. American Geological Institute Report by President Hill on reorganization program and A.A.P.G. and A.G.I. relationship.
2. Dues Increase — Recommendation of Executive Committee for increase of \$1.00 in annual dues.
3. Associate Membership — Possible recommendation from Executive Committee for a Constitutional Amendment to change the Associate Membership requirements.
4. Group Insurance — Possible recommendation by Executive Committee for action on a group Insurance plan.
5. "Mohole" — Progress report by L. L. Sloss on the study requested by the 1961 Business Committee of the aims and feasibility of the "Mohole" project.

A number of lesser routine matters and reports are also scheduled to be considered by the committee membership. If any members of the M.G.S. have any comments or suggestions concerning matters within the province of the Association's Business Committee may notify either L. B. Culligan, Dudley Hughes or Rudy Ewing.

## QUICK RESPONSE!

John Mann's letter in the January News Bulletin resulted in a very generous offer of Louisiana publications from Leo W. Hough, State Geologist, Louisiana Geological Survey. An extract from his letter states:

"The idea about securing publications from geological surveys of neighboring states is excellent. We will be happy to send you a set of our publications gratis for this project. If you already have some of them in the Municipal Library please send me a list of them and I will send you copies of the missing ones to fill out the set."

## COMING EVENTS

THE Jackson Geophysical Society has extended an invitation to the M.G.S. to hear Mark D. Butler, Gulf Oil Corporation, give a paper on "Geophysical Influence of a Mississippi Meteor Crater." The paper will be given at a J.G.S. dinner meeting on Monday evening, April 16, at the Robert E. Lee Hotel. Social hour at 5:30 and dinner at 6:30 PM.

THE Mississippi Academy of Sciences is scheduled to meet on the Millsaps College Campus, Thursday and Friday, April 26 and 27, 1962. Four diversified major invited papers will be presented Thursday afternoon in the Christian Hall. The Earth Science section will meet in the Science Hall at 8:30 AM Friday morning and a number of papers on various aspects of geology will be presented. Members of the M.G.S. are invited to attend.

## A.A.P.G. NOTES

The following summary of a recent A.A.P.G. Executive Committee Meeting is being published for the benefit of the rank and file membership who may sometimes wonder if the national Society does anything except collect dues, publish a monthly bulletin and select professional works. Of special interest is section #3 about a proposed slight increase in annual dues.

The National Executive Committee, composed of Mason Hill, President; Ben Parker, Past President; Ben Carsey, Vice President; George Cohee, Secretary-Treasurer; and Grover Murray, Editor, met in Cincinnati, November 5, 1961. Robert H. Dott, Executive Director, attended the meetings. Leo R. Newfarmer and Robert E. Rittger (Presidential Candidates for 1962) and T. A. Baldwin, Business Committee Chairman, were invited participants. Much of the meeting dealt with "housekeeping" matters. The following items are called to the attention of the District Representatives:

- (1) Some of our members in Libya have expressed interest in forming a Libyan District of A.A.P.G. Action was taken to create such a district as soon as a formal petition is received.
- (2) The Committee approved publication of a Special Volume correcting and amalgamating more complete data tabulated by the Committee on Statistics of Exploration Drilling for the years 1944-1960.
- (3) **A.G.I.**  
The President reported on meetings of members of our Executive Committee with representatives of G.S.A. and A.G.I., resulting in agreement for the reorganization of A.G.I. (with a new constitution, clarified purposes, etc., including five A.A.P.G. representatives on the governing board of A.G.I.). The decision to join in this agreement was based on the recent poll of our membership which indicated widespread approval for support of A.G.I. Specifically, more than 75% of over 4,300 answers favored the services and potential services of A.G.I.; 63% favored financial support of A.G.I.; and 61% favored raising dues \$2.00 per head, if necessary, for this purpose. The member societies have contributed approximately \$22,000 annually (A.A.P.G. \$10,000; G.S.A. \$10,000; other societies \$2,000) for A.G.I. Headquarters' operation, thus making it possible for A.G.I. to obtain national Science Foundation grants of approximately \$750,000 annually, to be used for various services to Earth Scientists. In the future G.S.A. will contribute at the rate of \$2.00 per member annually, for A.G.I. The A.A.P.G. Executive Committee will ask the Business Committee (March 26, 1962 — San Francisco) to approve an increase in A.A.P.G. dues of \$1.00 per member to offset our annual A.G.I. contribution.

## THANKS

A note of thanks and appreciation to the 5 members of the Mississippi Landmen's Association who presented a panel discussion on responsibilities and problems of oil landmen. Leroy Gibson, Mobil Oil, presented a talk and moderated a panel discussion by Lamar Farrington, Ohio, H. B. Lilley, Mobil, Marlin Roberts, Marr Company, and Virgil Michael, Independent Lease Broker.


**NEWS BULLETIN SPONSORS**

**BAROID WELL LOGGING SERVICE**  
 FL 2-6629 JACKSON, MISS.

---

**SCHLUMBERGER WELL SURVEYING CORP.**  
 FL 2-8589 JACKSON, MISS.

---

**EDGAR TOBIN AERIAL SURVEYS**  
 Capitol 3-6203  SAN ANTONIO, TEXAS

**SUN-n-SAND MOTOR HOTEL**  
 401 N. LAMAR FL 4-2501

---

**WELLCORE CO.**  
 428-1466 LAUREL, MISS.  
 TOMMY TOMLINSON

---

**P. G. A. C.**  
 FL 2-4337 JACKSON, MISS.

**PROFESSIONAL CARDS**

**XAVIER M. FRASCOGNA**  
 INDEPENDENT GEOLOGIST  
 P. O. Box 10653  
 Westland Station  
 Jackson 9, Mississippi  
 Phone FL 5-2956

**ROBERT R. PHILLIPS**  
 CONSULTING GEOLOGIST  
 FL 3-7964 DEPOSIT GUARANTY BANK BLDG.

**THIS COULD BE YOUR PROFESSIONAL CARD!**

**GUSHER**

**CALIFORNIA COMPANY**  
 J. B. CARNEY, geologist, transferred from Boliva to Exploration, Jackson.  
 J. W. TLÁPEK, reported for employment from the University of Missouri.

**CONTINENTAL OIL COMPANY**  
 J. H. LIDDELL, geologist, transferred to Jackson from Harvey, Louisiana.

**GULF OIL CORPORATION**  
 H. E. HOHMANN, geologist, transferred to Jackson from New York City.

**PAN AM**  
 RICHARD R. ZACHMAN, geologist, transferred to New Orleans.  
 HOWARD M. COTTON, geologist, transferred to Oklahoma City as District Geologist.  
 H. R. SHAFFER, geologist has resigned to become an independent geologist.  
 CHUCK NOLL, geologist, transferred from Oklahoma City to Jackson.

LARRY WALTERS, geologist, transferred from New Orleans to Jackson.  
 JERRY E. ZOBEL, geologist, transferred Rocky Mountain Division to Jackson.  
 JOHN DROBNYK AND MURRAY T. DOUGHERTY, recently joined the Pan Am organization in Jackson.  
 JOE TERRY — has been retained to represent APACH OIL COMPANY in Mississippi.

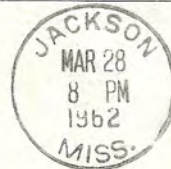
**NEW MEMBERS**

David A. DeVries, Gulf Coast Research Lab.  
 Riley Hagan, Union Producing  
 Harry E. Hohmann, Gulf Oil  
 Edward S. Gilson, Texaco  
 Barry Goldman, Hess Production Company  
 Bill S. McGowen, Continental Oil  
 James F. McMullin, California Company  
 Wm. C. Milner, California Company  
 Henry C. Potter, California Company

**NEWS BULLETIN**  
 P. O. Box 2607  
 Jackson, Miss.



**Mississippi Geological Society NEWS BULLETIN**



Mr. Frederic F. Mellen  
 Consulting Geologist  
 Box 2584  
 Jackson, Miss.

# NEWS

# BULLETIN

MISSISSIPPI GEOLOGICAL SOCIETY

VOLUME IX

MAY, 1962

NUMBER 4

## ELECTION TIME - - - MAY 31

### NOMINATIONS FOR OFFICE 1962 - 1963

The Nominating Committee as appointed by the Executive Committee has submitted to the Society its nominees for office during the year 1962-63. Additional nominations were made from the floor at the April 19th business meeting and nominations were officially closed. The election will take place at the last meeting of the year on Thursday, May 31.

#### G. K. ANDERSON



University of Illinois, BS, 1949  
Texas Tech., MS, 1950  
1950-52 Inst. Miami Univ., Ohio  
1952- Ohio Oil Company

Affiliations: Miss. Geol. Soc., A.A.P.G.  
Past Service: Entertainment Committee,  
Past-Ch. Nomenclature  
Comm., G.C.A.G.S.  
Comm., News Bull.  
Corr., Secretary 55-56,  
Vice-President 57-58.

#### R. B. ROSS



University of Texas, BS, 1950  
1951-54 Geologist with W. J. Mechura  
1954-60 Tennessee Gas, District Geologist  
1960- Consultant

Affiliations: Miss. Geol. Soc., A.A.P.G.  
Past Service: Chairman, Entertainment  
Committee, 1959-60  
Chairman, Program  
Committee, 1961-62  
Frio Sand Study Group  
(H.G.S.)

#### BAXTER L. SMITH



Southern Methodist University, BS, 1932  
University of California — post-grad.  
33-35  
1936- Sun Oil Company

Affiliations: Miss. Geol. Soc., A.A.P.G.,  
SEPM, Mississippi Gem  
& Mineral Society

Past Service: Past Chairman, Boy Scout  
Committee, Merit  
Badge Examiner; Past  
Co-leader on Field Trip  
& current Chairman,  
Field Trip Committee;  
Chairman, Senior Oil  
Scientist School Visitation  
Group, Past President,  
Mississippi Gem  
and Mineral Society.

#### VICE PRESIDENT

##### W. F. BROWNING



University of Virginia, BA/MS, 1951  
1952- Shell Oil Company

Affiliations: Miss. Geol. Soc., A.A.P.G.  
Past Service: Chairman, Publicity  
Committee, 1959-60  
Entertainment  
Committee, 1960-61  
Secretary 1961-62

##### J. F. BOLLMAN



Southern Methodist University, BS, 1947  
Oklahoma University, MS, 1950  
1950-59 Texas Company, District Geologist  
in Tyler, Texas  
1959- Larco Drilling Company

Affiliations: Miss. Geol. Soc., A.A.P.G.  
Past Service: Bowling Committee  
Tyler Geological Society,  
Vice-President

##### E. H. LAMBERT



Louisiana State University, BS/MS,  
52/56  
1952-56 Gulf Oil Corporation  
1956- Ohio Oil Company

Affiliations: Miss. Geol. Soc., A.A.P.G.  
S.E.P.M.

Past Service: Chairman, Jurassic Study  
Group  
Editor, Field Trip Guide  
Book (S.G.S.)

#### EDITORS NOTE

This edition was going to press when W. N. Hollingsworth, candidate for President, learned of his transfer to Lafayette, Louisiana. G. K. Anderson originally declined nomination, but under the circumstances has reconsidered and will replace Hollingsworth on the slate.

## MISSISSIPPI GEOLOGICAL SOCIETY

(Affiliated with the American Association of Petroleum Geologists & Gulf Coast Association of Geological Societies)

### Executive Committee

X. M. Frascogna, Consulting Geologist — President  
 L. J. Ringenberg, Consultant — Vice President  
 W. F. Browning, Shell — Secretary  
 L. B. Culligan, Calco — Treasurer  
 R. B. Ross, Independent — Program Chairman  
 R. V. Ewinr, Dixie — Past President

### News Bulletin Staff

W. M. Frew, Continental — Editor  
 F. D. Molsberry, Cities Service — Assistant Editor

### Correspondents

G. K. Anderson,	Ohio
C. D. Champlin,	Pan Am.
E. E. Luper,	Independent
D. O. Rimsnider,	Calco
W. E. Taylor,	Union Producing

## TREASURER



### L. G. FRANZ

Texas University, BS, 1940  
 1940- Gulf Oil Corporation

Affiliations: Mississippi Geological Society and A.A.P.G.



### E. R. HINES

Texas Tech., BS, 1949  
 1950-54 Gulf Oil Corporation  
 1954-55 Texas Eastern Transmission Corporation  
 1955-58 Seaboard Oil Company  
 1958- Consultant

Affiliations: Mississippi Geological Society, A.A.P.G.

Past Service: Insurance Committee

## TREASURER'S REPORT

MARCH 31, 1962

### On Hand February 28, 1962

Checking Account	\$1,812.82
Savings Account	2,306.31

### Income and Expense Statement

Publications	Income	Expense
Receipts from sales	\$ 240.90	
Advertising by mail		\$ 20.00
3000 Pub. list reply cards		85.07
Postage		25.00
Material for Publication Display		21.59
Express Charges Exhibit to A.A.P.G. Conv.		43.29
Handling and Service		9.60
<b>Meeting</b>		
Refreshments	71.85	
Notices Meeting 2-15-62		21.49
Notices Meeting 2-28-62		21.58
Notices Meeting 3-26-62		21.70
<b>Field Trip</b>		
Guide Book Advertising	130.00	
Field Trip Announcements		29.72
<b>Newsbulletin</b>		
Printing (Vol. IX #2 Jan.)		70.20
<b>Photo Directory</b>		
Final payment photos		17.42
Data reply cards		38.40
<b>Administrative</b>		
Dues	21.00	
Membership List		23.50
Executive Committee Meetings		32.14
Geological Course Questionnaire		21.70
Miscellaneous		11.78
<b>TOTALS</b>	<b>\$ 463.75</b>	<b>\$ 514.18</b>
Expense over income this month		\$ 50.43
Income over expenses fiscal year		256.02

### On Hand — March 31, 1962

Checking Account	1,762.39
Savings Account	2,306.31
Paid Membership 1961-62 as of March —	391

## COMMITTEE REPORTS

### PROGRAM COMMITTEE:

Subject:	Presentations of awards and reports
May 8, 1962	6:30 PM Sun-N-Sand
Subject:	Election and Beer Bust
May 31, 1962	5:30 PM Milner's Lodge



### D. E. PAULL

University Wisconsin, BS, 1957  
 1957- Pan American Oil Corp.

Affiliations: Mississippi Geological Society & A.A.P.G.

## SECRETARY

### W. M. FREW

University of Michigan, BS/MS,  
 1954/55  
 1955- Continental Oil Company  
 Affiliations: Mississippi Geological Society & A.A.P.G.  
 Past Service: Program Committee, 1961-62  
 News Bulletin Editor, 1961-62  
 Desha Basin Study Group  
 Field Trip Committee, 1957-59 (C.C.G.S.)



### M. L. OXLEY

Phillips University, BA, 1955  
 University of Oklahoma, MS, 1958  
 1957- Lone Star Producing Co.  
 Affiliations: Mississippi Geological Society & A.A.P.G.  
 Past Service: Chairman, Publications Committee, 1959-60  
 Chairman, Entertainment Committee, 1961-62  
 Black Warrior Basin Study Group 1961-62

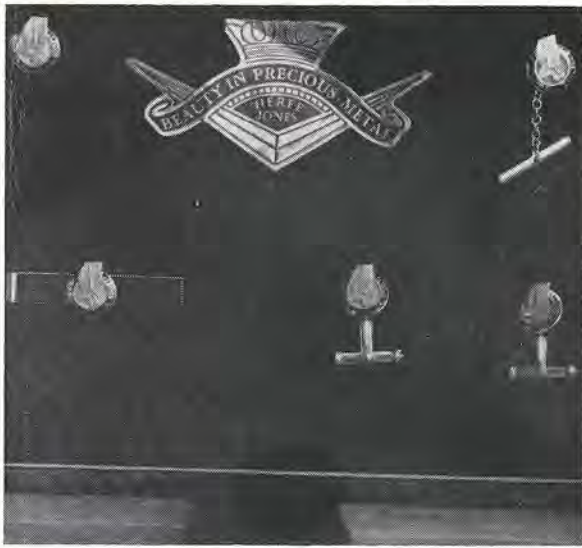


### E. W. TAYLOR

Indiana University, BS, 1950; MA, 1952  
 1952- Union Producing Company  
 Affiliations: Mississippi Geological Society, A.A.P.G., SEPM  
 Past Service: Past-Editor, News Bulletin  
 Type Locality Committee, 1961-62  
 Field Trip Committee, 1961-62







### SOCIETY JEWELRY

Men's jewelry with the Society emblem is now available at modest cost to members of the Mississippi Geological Society. Pre-paid orders with checks made payable to the Herff Jones Company, may be sent to A. J. Lopez, P. O. Box 1817, Jackson, Mississippi. Each order is to include the members name (and initials), address, and company affiliation.

Jewelry in white gold is available only for past and present officers.

	10 K	Gold Filled
Button-Lapel	\$ 8.56	\$4.75
Tie Tack	\$ 9.80	\$5.98
Tie Bar	\$ 9.80	\$5.98
Cuff Links	\$16.24	\$9.80

### MARINE GEOLOGY

The Gulf Coast Research Laboratory in Ocean Springs, Mississippi, has announced the 1962 Summer Session curriculum of interest to geologists.

#### PHYSICAL MARINE GEOLOGY — Geology 361 July 16 — August 4

A general introduction to the physical processes at work on the shores of Mississippi Sound with emphasis on the erosional and depositional effects of waves and currents. Beaches and spits will be periodically surveyed to measure changes in shape, height, cross-section, lateral shift, and particle distribution and to observe growth and destruction of bars, cusps, spits and tidepools. Prerequisites: Physical Geology, Historical Geology, and Mineralogy, or permission of Instructor. — 3 semester hours, graduate or undergraduate credit.

#### CHEMICAL MARINE GEOLOGY — Geology 362 August 6 — August 25

Supervised research in the chemistry of the waters of Mississippi Sound and geochemistry of the bottoms. Studies will be made of lateral, vertical and tidal changes in water composition. Analysis will be made of core samples taken from different environments: bayous, mudflats, bars, oyster reefs, bays, tidal channels and sandy shelves. Prerequisites: Physical Geology, Historical Geology, Mineralogy, Qualitative and Quantitative Analysis, or permission of Instructor. — 3 semester hours, graduate or undergraduate credit.

### REGISTRATION

There are no pre-registration forms. Mississippi students register at the Laboratory the day their courses begin. The fee is \$6.00 per semester hour. Students with affiliated Louisiana institutions register at their home institutions before coming to Ocean Springs. Other out-of-state students may register at the Laboratory, and the fee is \$12.00 per semester hour. Students who wish to have their credits transferred to institutions not specifically affiliated with the Laboratory should make arrangements beforehand.

### LIVING EXPENSES

The Laboratory operates a dining hall and offers room and board for \$16.00 a week, payable one week in advance.

(Continued on Page 4)

### CONSTITUTIONAL ADMENDMENT

The Society Advisory Board during this past year, has reviewed the subject of membership qualifications of the Mississippi Geological Society. The points of specific interest were: 1) Review of membership requirements under the present constitution; 2) Review the recent analyses of the subject by the A.A.P.G.; 3) Possible establishment of new and more rigid society requirements; and 4) Review the role of the Associate Member within the Society, qualifications of such membership; and related points.

The Board has recommended that requirements for Active Membership should be tightened and that this could be done simply by eliminating requirement (2) Section II, Article III of the Constitution. Requirements for Associate Membership are considered sufficient as written in Section III. In regards to Honorary Membership it is the consensus of the Board that the Society is now mature enough to have some members who have made sufficient contributions to the Society and profession to have earned this honor.

At the last meeting of the Mississippi Geological Society it was moved, seconded and affirmed by members in attendance to vote on the constitutional amendment eliminating requirement (2) Section II, Article III from the Constitution.

A vote on this amendment was approved at the May 7, 1962, Society meeting. The section to be amended is as follows:

### ARTICLE III — MEMBERSHIP

Section II: In order to be eligible for active membership, an applicant shall: (1) Have a degree in geology or an allied science from a recognized college or university and shall be directly engaged in the application of geology, or shall (2) Have been primarily engaged in geological work during at least the preceding five years. These requirements shall not apply to any member as of this date or if he were a charter member of the Society as reflected by June 16, 1940, membership list.

**THE PROPOSED AMENDED SECTION SHOULD READ:**  
Section II: In order to be eligible for active membership, an applicant shall have a degree in geology or an allied science from a recognized college or university and shall be directly engaged in the application of geology. This requirement shall not apply to any member as of this date or if he were a charter member of the Society as reflected by June 16, 1940, membership list.

The amended Section II will not contain requirement (2).

### S.P.W.L.A.

The Society of Professional Well Log Analysts will hold its Third Annual Convention at the Rice Hotel in Houston, Texas, on May 16, 17, and 18. It is a new society made up of geologists, geophysicists, and engineers interested in the use of electric logs in evaluating oil formations. S.P.W.L.A. invites a representative of the Mississippi Geological Society to attend the convention with the courtesy of free registration.

### RECENT PUBLICATIONS

These bulletins have recently been published by the Mississippi Geological Survey. Their cost is one dollar each and may be ordered from the Survey in University, Mississippi, or purchased over the counter at the Miss. Geol. Sur. Sample Lab. in Jackson, Mississippi.

Bulletin 92 is **Calhoun County Geology and Ground Water Resources** by William Scott Parks. This bulletin includes not only the surface geology but also a very good investigation of the ground water resources of the county. The geologic investigation covers both economic geology and stratigraphic discussions of the surface formations. To insure uniformity and stratigraphic terminology, the new Code of Stratigraphic Nomenclature, adopted by the American Association of Petroleum Geologists is followed when possible in this bulletin.

Bulletin 93 is **Heavy Minerals of Sand from Recent Beaches of the Gulf Coast of Mississippi and Associated Islands** by Richard D. Foxworth, Richard R. Priddy, Wendell B. Johnson, and Willard S. Moore. This bulletin presents a review of studies of heavy mineral grains, often termed "heavies," in beaches and dunes of quartz sand along the

(Continued on Page 4)


**NEWS BULLETIN SPONSORS**

**BAROID WELL LOGGING SERVICE**  
 FL 2-6629 JACKSON, MISS.

---

**SCHLUMBERGER WELL SURVEYING CORP.**  
 FL 2-8589 JACKSON, MISS.

---

**EDGAR TOBIN AERIAL SURVEYS**  
 CApitol 3-6203  SAN ANTONIO, TEXAS

**SUN-n-SAND MOTOR HOTEL**  
 401 N. LAMAR FL 4-2501

---

**WELLCORE CO.**  
 428-1466 LAUREL, MISS.  
 TOMMY TOMLINSON

---

**P. G. A. C.**  
 FL 2-4337 JACKSON, MISS.

**PROFESSIONAL CARDS**

**XAVIER M. FRASCOGNA**  
 INDEPENDENT GEOLOGIST  
 P. O. Box 10653  
 Westland Station  
 Jackson 9, Mississippi  
 Phone FL 5-2956

**ROBERT R. PHILLIPS**  
 CONSULTING GEOLOGIST  
 FL 3-7964 DEPOSIT GUARANTY BANK BLDG.



**IN MEMORIAM**

**Dr. William Clifford Morse**

October 28, 1874 — March 2, 1962

The Mississippi Geological Survey regretfully announces the death of Dr. Morse, Director of the Survey from 1934 until 1958 and Director Emeritus since 1958. Dr. Morse had worked in his profession for many years, in many states, but especially in the State of Mississippi where he has been a leader. His life has left a decided influence on all that have known him. His leadership, his integrity, and his technical precision were an inspiration to his colleagues throughout the years.

**ABSENTEE BALLOTS**

Mississippi Geological Society members who live outside of the Jackson area may vote in the forthcoming officer election by absentee ballots. The ballots may now be obtained by written request to the Secretary, Mississippi Geological Society, P. O. Box 422, Jackson 5, Mississippi. Absentee ballots must be returned by mail and in possession of the Election Committee by Thursday, May 31, 1962.

**NEW MEMBERS**

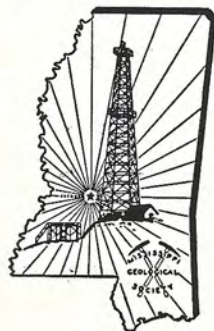
- Charles G. Byrd, Sun Oil Co.
- James B. Carney, California Co.
- John W. McGowan
- Charles R. Noll, Jr., Pan Am. Corp.

**RECENT PUBLICATIONS . . .** (Continued from Page 3)  
 mainland of the Mississippi Coast and the associated islands. The investigation was designed to determine the mineral species, their sources, and their concentrations, with a view toward exploitation of the richer deposits.

**MARINE GEOLOGY . . .** (Continued from Page 3)  
 Meals are furnished to visitors at nominal cost. Reservations in the dormitories are made only when telephoned or written requests are received. Incoming students may telephone for transportation from bus and train stations in Ocean Springs and Biloxi. The telephone number is TR 5-4233.

**NEWS BULLETIN**

P. O. Box 2607  
 Jackson, Miss.



**Mississippi Geological Society NEWS BULLETIN**