

# News

# BULLETIN

MISSISSIPPI GEOLOGICAL SOCIETY

VOLUME VIII

DECEMBER, 1960

NUMBER 1

## MISS. GEOLOGICAL SOCIETY HOSTS 10TH ANNUAL GCAGS MEETING

The Mississippi Geological Society served as the host society for the 10th Annual Meeting of the Gulf Coast Association of Geological Societies, held jointly with the Gulf Coast Section of the Society of Economic Paleontologists and Mineralogists in Biloxi, Mississippi, October 19-21, 1960. This meeting was also designated as a joint regional meeting of the American Association of Petroleum Geologists.

The total of 1,119 registrants attending the meeting consisted of 803 men and 316 ladies.

At this meeting five geologists were honored for their outstanding contributions to Gulf Coast geology. Honorees included Esther R. and Paul L. Applin, U. S. Geological Survey; B. W. Blanpied, retired, Gulf Oil Corporation, Herman Gunter, retired, Florida Geological Survey, and William Clifford Morse, retired, Mississippi Geological Survey.

Several outstanding addresses were highlights of the opening session of the technical program and served to augment the Convention theme, "The Future of Gulf Coast Oil." The keynote address, "Unfinished Business in Gulf Coast Exploration," was delivered by Frank J. Gardner, Exploration Editor for Oil and Gas Journal. Another important address, "The Petroleum Outlook for the 1960's," was presented by John G. Winger, Vice President, The Chase Manhattan Bank, New York. Governor Ross Barnett presented the welcome address and M. F. Kirby, President of the G. C. A. G. S. presided over the opening session.

In addition to the opening addresses, a total of 25 varied and interesting papers were presented during the technical program.

A "Best Paper Award" proved to be an interesting and successful part of the program. A cash prize and a plaque were awarded to the authors who presented the three best papers during the meeting. Papers were judged on content and on written and oral presentation. A team of three judges selected the papers making the most important contribution to the knowledge of petroleum geology in the Gulf Coast region. Winners of these awards were the following:

**First Place** — Dudley Hughes, Triad Oil and Gas Company, Jackson, Mississippi.

"Faulting Associated with Deep Seated Salt Domes in Northeast Portion of Mississippi Salt Basin"

**Second Place** — E. H. Rainwater, Shell Oil Company, Houston, Texas.

"The Role of Stratigraphy in the Future Exploration for Oil and Gas in the Gulf Coast"

**Third Place** — D. I. Andrews, Rodgers, Seglund and Shaw Associates, New Orleans, Louisiana.

"The Louann Salt and its Relation to Gulf Coast Domes"

Several field trips were held in conjunction with the meeting. A pre-meeting offshore trip to Horn Island to observe present day sedimentary and erosional processes in Mississippi Sound was conducted on Wednesday, October 19, 1960. This excursion proved to be so popular that it was repeated for a larger delegation on Saturday, October 22.

A post-meeting on-shore trip was also conducted. This trip covered the Miocene to recent deposits exposed in Southeastern Mississippi with special emphasis placed on the terrace deposits which are developed in the area.

An interesting entertainment and social program was provided for the delegates and ladies attending the meeting.

The Mississippi Geological Society is fortunate in having in its membership a great number of experienced, willing and dedicated geologists. The members serving on the various Convention committees were responsible for the success of the Biloxi meeting.

(Continued on next page)

### SPONSORS

For the past year this News Bulletin has been made possible by the cooperation of the companies that are listed on Page Four. Take note and . . .

**SUPPORT OUR SPONSORS**



## MISSISSIPPI GEOLOGICAL SOCIETY

(Affiliated with the American Association of Petroleum Geologists  
& Gulf Coast Association of Geological Societies)

### Executive Committee

R. V. Ewing, Dixie — President  
 E. R. Adams, Shell — Vice President  
 Allan Jackson, Humble — Secretary  
 D. E. Herlihy, Mobil — Treasurer  
 D. T. Franklin, Ashmun & Hilliard — Program Chairman  
 M. F. Kirby, Independent — Past President

### News Bulletin Staff

D. C. Davis, Continental — Editor  
 D. D. Brown, Continental — Assistant Editor

### Correspondents

G. K. Anderson,	Ohio
J. D. Bryan,	Monterey
C. D. Champlin,	Pan American
J. R. McElroy,	California
W. E. Taylor,	Union Producing

## Mississippi Geological Society . . . .

(Continued from page 1)

The following organization was responsible for the planning, preparation and conduct of the meeting:

### GENERAL COMMITTEE

A. E. Blanton	Chairman
Frank X. Bland	Don T. Franklin
Mrs. A. E. Blanton (Women's Auxiliary)	Charles G. Giffin
Glenn E. Clark	E. G. Jeffreys
David C. Davis	Wendell B. Johnson
Gene O. Davis	M. F. Kirby
R. V. Ewing	Lester J. Ringenberg
Richard W. Farlee	L. D. Robbins
	Robert T. Violette

### CONVENTION COMMITTEES

#### STANDING COMMITTEES

	<b>AAPG</b>	
Gene O. Davis		L. B. Culligan
	<b>ENTERTAINMENT</b>	
Armando Ricci Marvin Oxley		Dave Muir Dee Layman
	<b>NOMENCLATURE</b>	
Charles Bilberry Emmett Adams H. M. Morse		Armando Ricci Richard Zachman Miley Craft
	<b>PROGRAM</b>	
Don Franklin		John Ashman
	<b>PROJECTION</b>	
Ted Russell		
	<b>PUBLICATIONS</b>	
Dave Robbins		Reece Booker
	<b>PUBLICITY</b>	
R. C. Howard		
	<b>NEWS BULLETIN</b>	
D. C. Davis		D. D. Brown
	<b>BLOOD BANK FIELD TRIP</b>	

#### SPECIAL COMMITTEES

	<b>PHOTO DIRECTORY</b>	
Charlie Bush		Joe Terry
	<b>BOWLING</b>	
Don Hook		
	<b>G.C.A.G.S.</b>	
M. F. Kirby, Pres. E. G. Jeffreys, Treas.		R. V. Ewing Emmett Adams
	<b>PRESERVATIONS OF CORES &amp; SAMPLES</b>	
Claude Smith		
	<b>INSURANCE</b>	
E. G. Jeffreys Ralph Hines		R. Merrill Harris Mort Phillips
	<b>TYPE LOCALITY</b>	
Emmett Adams		
	<b>GOLF TOURNAMENT</b>	
	<b>BOY SCOUTS</b>	
	<b>AAPG SALT DOME VOLUME</b>	

As you can see the committees are far from complete. If anyone would care to participate in any of the above committee work, please get in touch with Rudy Ewing.

	<b>PROGRAM</b>	<b>HOUSING</b>
	Gene O. Davis) Richard Farlee) Co-Chm. Leland Culligan R. V. Ewing Dudley Hughes Graham Hughes	Don Franklin, Chm. Louis Ridgway
	<b>EDITOR</b>	<b>PUBLICITY</b>
	Wendell B. Johnson	Robert T. Violette, Chm. Joseph Lindsey
	<b>ENTERTAINMENT</b>	<b>REGISTRATION</b>
	Glenn Clark, Chm. Harold Baker Walter Trogel Sam Ray	Charles G. Giffin, Chm. Donald C. Gifford
	<b>SOUND AND PROJECTION</b>	<b>EXHIBITS</b>
	Dave Robbins, Chm. Gerald K. Anderson	David C. Davis, Chm. Ed Russell
		<b>ADVERTISING</b>
		Lester J. Ringenberg, Chm. Marvin Oxley
		<b>SEPM PROGRAM</b>
		W. E. Taylor, Chm.
		<b>FIELD TRIP</b>
		Frank X. Bland, Chairman
	E. J. Harvey Robert R. Jacobs J. L. Nichols	R. R. Priddy Andy Sestak Baxter L. Smith

#### AAPG DISTRICT REPRESENTATIVE

In the near future ballots will be mailed to A.A.P.G. members from headquarters in Tulsa to vote for a new District Representative to replace Luther Powell, The California Company, transferred to New Orleans. A check of the number of A.A.P.G. members in Mississippi last August showed a total of 173. If a later count shows as many as 175 we shall be entitled to select 2 representatives at this election. The candidates are Leland Culligan, The California Company; Dudley Hughes, Triad Drilling Company; and Robert Womack, Independent. If we are entitled to 2 representatives the top 2 men will be elected, otherwise the one receiving the most votes will be Mississippi's new A.A.P.G. District Representative.



# COMMITTEE REPORTS

# THE GUSHER

## Nomenclature

The Nomenclature Committee has recommended the following field names for new producing areas:

Field Name (Formation)	Discovery Well, Gauge, Date
Reid (Mississippian)	Gulf Oil Corp. No. 1 Reid 26-15, Sec. 26, T12S-R1E, Calhoun Co., Miss. IPF 1,084 MCFGPD + 20.12 BSWPD, open choke, TP 109#. Comp. 10-4-60 Shut In.
Gilliard Lake (Wilcox)	R. N. Griffin & K. B. Keary, Jr. No. 1 McGehee-Ford, Sec. 30, T5N-R3W, Adams Co., Miss. IPF 172 BOPD (Gr. 40.3° API), 7/64" chk., TP 575#. Comp. 10-11-60. Geo. M. Harrison & Larco Drlg. Co. No. 1-26 USA, Sec. 26, T7N-R9W, Wayne Co., Miss. IPF 108 BOPD (Gr. 42.4° API) + 64.8 MCFGPD + 1 BSWPD, open choke. Comp. 10-12-60.
So. Thompson's Creek (Rodessa)	Barnwell Drlg. Co. Inc. No. 1 Barnwell-Fernwood, Sec. 30, T3N-R8E, Pike Co., Miss. IPP 130 BOPD (Gr. 40.6° API) + 39 MCFGPD + 42 BSWPD. Comp. 10-21-60.
Southeast McComb (Lwr. Tuscaloosa)	

## TREASURER'S REPORT

JUNE 1, 1960 — DECEMBER 15, 1960

On Hand June 1st

Checking Account — Deposit Guaranty \$ 1,090.39  
Savings Account — First Federal 2,130.67

### Income Statement

	Income	Expense
<b>Publications</b>		
Receipts from Sales	\$199.88	
Refund		\$ 3.00
Debugging books		5.00
<b>Dinner Meetings</b>		
Name Tags		17.37
Mailing notice — SEG (Oct. 11)		36.14
Refreshments — SEG (Oct. 11)		77.81
Speaker Expense (Nov. 22)		68.80
Projector (Nov. 22)		5.20
Meal Cost (Nov. 22)		170.88
Meals paid (Nov. 22)	177.00	
Mailing notice (Nov. 22)		18.67
Contribution	50.00	
<b>GCAGS</b>		
Mailing Brochures		26.95
Golf Cup		42.15
<b>Field Trip</b>		
Printing Errata		6.50
Advertisement	60.00	
<b>Administrative</b>		
Printing & Mailing dues		68.16
Dues Received	927.00	
Preparing & Mailing Membership List		72.17
Box rent, stamps, supplies, etc.		31.02
Dues refund		3.00
	1,413.88	652.82
<b>Excess of Income over Expense</b>	\$761.06	
<b>On Hand December 15</b>		
Checking Account	\$ 1,851.45	
Savings Account	2,130.67	

## DUES DELINQUENT ?

Future distribution of the News Bulletin will be according to the paid up membership list. — So if you are delinquent in your dues pay up now.

Arkansas Fuel Oil Corp: GEORGE ISBELL left Arkansas Fuel Oil in September and went to work with Larco Drilling Co. FRANK KEITH, JR. was transferred to New York in October and is now working for Cities Service of New York, the Parent Company of Arkansas Fuel. WILEY HILL, Division Manager of Exploration for AFO in Jackson, is being transferred to Bartlesville, Okla. as head of Contracts Department for Cities Service of Delaware. WELDON HENKHAUS, Division Geologist for AFO in Jackson is being transferred to Cities Service Oil Company's new Southern Division office to be located in Bartlesville, Okla. where he will be a staff geologist. JACK OYLER and FORREST MOLSBERRY will remain in Jackson but will now be associated with the Cities Service Oil Company.

Atlantic Refining Company: C. M. McDANIEL, formerly District Geologist in this district, has been transferred to the Corpus Christi office. WM. E. MORROW has recently been transferred to the Oklahoma City office.

California Company: MAX GILPIN, geologist, resigned from Calco in November to go with Texas Eastern Transmission in Shreveport. JACK LANE transferred from Exploration, New Orleans, to Area Development Geologist, Jackson. JIM WRAY transferred from Exploration, Jackson to Production, Harvey, Louisiana. DICK SNYDER, geophysicist, resigned in December to go with Convair Astronautics Division of General Dynamics.

Cities Service: DON BOVILLAIN is being transferred to Cities Service Southern Region Exploration office in Bartlesville, Okla. where he will be Regional Electric Log Analysis. DON BOUDREAUX will go to the Bartlesville General Office to train in Electric Log Analysis. JIM STRIPLING will also go to the Bartlesville General Office where he will assume an area geological assignment.

Gulf: LEE KINCAID, geologist, to Jackson from Shreveport. GEO. BURCHFIELD, geologist, to Jackson from Shreveport, HALL TRICHEL, geologist, to Jackson from Shreveport. ROY WORRELL, geologist to Jackson from Miami. H. E. HARRIS, geophysicist, to Jackson from Shreveport. WENDELL WILHITE, geophysicist, to Jackson from Shreveport.

Humble: JACK JORDAN transferred to Hattiesburg from Columbia, Miss. ROY WALTHER transferred from Hattiesburg to Grand Isle, La. KEN HARLAN and WALTER STRONG transferred from Laurel to New Orleans. JAMES E. VAUSE, Humble (Carter Division) has been transferred to the Jackson Office from Shreveport.

BOB HORTON, Kern County Land Company, transfers from Jackson to New Orleans effective the 1st.

Lion: BILL STINSON resigned from Lion to go independent, November, 1960.

Mobil: CHAS. BROWN resigned to go with Bayou Oil Company, Shreveport, July 1, 1960.

Ohio: JIM FURRH has resigned his position to go into the consulting field. RAY FRISBY left for Tripoli, Libya, and a position with the Oasis Oil Company in June. ERNIE LAMBERT was transferred to Jackson from Shreveport in July. JOE WILSON returned to the U. S. from Tripoli, Libya, in August, after 4 years there with Oasis Oil Company.

Schlumberger: CHUCK GIFFIN was promoted to Location Manager and transferred from Jackson to Columbia, Mississippi. AL GILREATH was transferred from Jackson to New Orleans as Senior Sales Engineer. CHARLIE BUSH transferred from Oklahoma City to Jackson as Senior Sales

(Continued on page 4)



NEWS BULLETIN SPONSORS

NEELY BLUE PRINT & SUPPLY CO.

FL 4-3523

JACKSON, MISS.

BAROID WELL LOGGING SERVICE

FL 2-6629

JACKSON, MISS.

DAN GOSSAGE

SCHLUMBERGER WELL SURVEYING CORP.

FL 2-8589

JACKSON, MISS.

EDGAR TOBIN AERIAL SURVEYS

CApitol 3-6203

SAN ANTONIO, TEXAS

CORE LABORATORIES, INC.

FL 3-0924

JACKSON, MISS.

L. L. RIDGWAY CO., INC.

FL 5-4751

JACKSON, MISS.

P. G. A. C.

FL 2-4337

JACKSON, MISS.

Insist on the bag with the Golden Tag

HUBCO SAND SAMPLE BAGS

Write for free sample  
HUTCHINSON BAG CORP., HUTCHINSON, KANSAS

PROFESSIONAL CARDS

XAVIER M. FRASCOGNA  
INDEPENDENT GEOLOGIST

Phone FL 5-2956

P. O. Box 10653  
Westland Station  
Jackson 9, Mississippi

Fleetwood 5-1528

WILBUR H. KNIGHT

Consulting Geologist  
901 FIRST NATIONAL BANK BUILDING

JACKSON 1, MISSISSIPPI

The Gusher

(Continued from page 3)

Engineer. ED KENDRICK transferred from Laurel to Jackson as Sales Engineer

Shell Oil Company: BRUCE PARMALLEE, District Geologist, transferred from Shreveport to Jackson. JOHN BRANCH, geologist, from Shreveport to Jackson. NORWOOD VARNADO, geologist, from Shreveport to Jackson. BILL MOORE, stratigrapher, resigned to go with the Mississippi State Geological Survey Sample Library.

Skelly: BEN PLOCH has been transferred to Tulsa

where he is now Division Geologist. BILL MOUNGER moved from Houston to Jackson to assume the duties of District Geologist here.

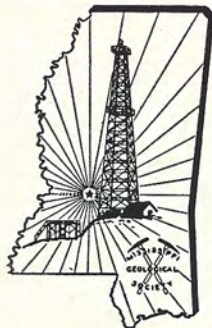
Sun: RIP BAKER to associate with the Chartor Oil Company. SANKEY BLANTON transferred to Jackson from Shreveport.

Tennessee Gas: DICK BURNETTE was transferred to Corpus Christi in October.

Texaco: GERALD W. KINSLEY joined Texaco in May in the Jackson office. HOWARD W. DAVIS was transferred to Jackson from the Wichita Falls, Texas office in June.

NEWS BULLETIN

P. O. Box 2607  
Jackson, Miss.



Mississippi  
Geological Society NEWS BULLETIN



# News

# BULLETIN

MISSISSIPPI GEOLOGICAL SOCIETY

VOLUME VIII

JANUARY, 1961

NUMBER 2

## WHO ARE THE SENIOR OIL SCIENTISTS?

Explaining the Senior Oil Scientists lecture-demonstration program without exhibiting charts and experiment paraphernalia is about as difficult as a man without arms attempting to describe the characteristics of a spiral staircase. With this thought in mind, may it be said that the Senior Oil Scientists are a group of oil company personnel who have volunteered their services, with the blessings of their respective companies, in the endeavor to present to junior and senior high school science students some **Applications of Basic Science to Industry**. The title of our group was not manufactured — the members earned it by having professional degrees (some having as much as 220 hours, including graduate work), and by extensive practical experience. This is, therefore, a professional contribution of working scientists to the youth of the state of Mississippi, and to the various communities where their programs are presented.

This project is sponsored by the Mississippi Academy of Sciences, under the direction of Dr. Clyde Q. Sheely, financed by the National Science Foundation, and locally coordinated by Curtis Flowers, of the Mississippi Petroleum Committee. The outstanding success with which this program has been carried out is borne out by its increasing popularity. The group is divided into teams of two men each, with a few "floaters" in the event that company business keeps a man from a scheduled date. Visits to the various schools throughout the state are by invitation. Those schools wishing to have this series of demonstrations apply for a date, and the visits are scheduled so that only about three appearances per team are made during the school year. This two man arrangement allows the team members to alternate between speaking and presenting the demonstrations. The average number of lectures per school is six, so that all science classes may be addressed.

This group, now known as the Senior Oil Scientists, had its beginning in the fall of 1959, when a few preliminary meetings were held, at which several geologists, geophysicists, engineers, etc. from several of the local oil company offices were present. The idea behind these meetings was to set up a semi-technical program, suitable for presentation to junior and senior high school science students. It is not the intent of the group to teach, but merely to inspire, or to so interests these students that they will graduate from college with science degrees and possibly go into some branch of scientific endeavor as a career. It is also hoped that as a result of these programs students will become more interested in Science Fair projects. Many of the Science Fair exhibits have shown considerable thought and ability of the exhibitor to do original research.



Left to Right, Standing: Joe Wilson, Rex Hewitt, George White.

Left to Right, Seated: Baxter Smith, Bob Arrington.

The original group of volunteers was composed of the following: Herbert Ferber and Frank Eckert, of Gulf Oil Corp., Dave Folger, of the California Co., Bill Mounger, of the Deposit Guaranty Bank, John McLain and J. H. Williams of Shell Oil Co., Baxter L. Smith, of Sun Oil Co., and T. Deane Rodgers, of Pan American Petroleum Co.

During the early meetings there was much discussion as to what type of experiments and demonstration material would be suitable for presentation to the age group to be dealt with. Early in the course of preparation for the forthcoming series of lectures, the author was elected chairman of the group. Under his direction, with many suggestions from the several members, a series of demonstrations was

(Continued on Page 2)

### SPONSORS

For the past year this News Bulletin has been made possible by the cooperation of the companies that are listed on Page Four. Take note and . . .

**SUPPORT OUR SPONSORS**



## MISSISSIPPI GEOLOGICAL SOCIETY

(Affiliated with the American Association of Petroleum Geologists  
& Gulf Coast Association of Geological Societies)

### Executive Committee

R. V. Ewing, Dixie — President  
 E. R. Adams, Shell — Vice President  
 Alan Jackson, Humble — Secretary  
 D. E. Herlihy, Mobil — Treasurer  
 D. T. Franklin, Ashmun & Hilliard — Program Chairman  
 M. F. Kirby, Independent — Past President

### News Bulletin Staff

D. C. Davis, Continental — Editor  
 D. D. Brown, Continental — Assistant Editor

### Correspondents

G. K. Anderson, Ohio  
 J. D. Bryan, Monterey  
 C. D. Champlin, Pan American  
 J. R. McElroy, California  
 W. E. Taylor, Union Producing

## TREASURER'S REPORT

DECEMBER 15, 1960 — JANUARY 15, 1961

### On Hand December 1st

Checking Account — Deposit Guaranty \$ 1,851.45  
 Savings Account — First Federal 2,130.67

### Publications

Mailing bags 13.35

### Dinner Meetings

Speaker Expense (Nov. 22) 9.82  
 Mailing Notices (Dec. 12) 18.94

### Administrative

Bank Charges 3.35  
 Mailing dues notices 10.30  
 Mailing Constitution 62.70  
 Membership Dues 18.00

### Newsletter

Mailing Advertising Notices 3.00  
 Mailing December Issue 24.00  
 Advertising Revenue 150.00

### Savings Account — First Federal

June, 1960 — Interest 42.61  
 December, 1960 — Interest 43.47

\$254.08      \$145.46

Excess of Income over Expense — \$108.62

### On Hand January 15

Checking Account \$1,873.99  
 Savings Account 2,216.75

Paid members to date — 324

## SECOND ANNUAL GEM AND ROCK SHOW

On February 18 and 19, the Mississippi Gem and Mineral Society will present its second annual gem and mineral exhibition. The show will be held in the Agricultural Building, at the State Fair Grounds. There will be feature and competitive exhibits of minerals, rocks, fossils, gems, and lapidary work. Dealers in specimen and lapidary materials will have unusual displays.

One of the features this year will be "The Singing Rocks." This unique attraction will feature Mrs. Ward (Mary) Aspaas, from Arizona, who will present a considerable repertoire of music played on slabs of phonolite. The amazing tonal quality of this music will be a delight to all.

Demonstrations of the techniques of cutting, grinding, polishing, and mounting of semi-precious and precious gemstones will be given throughout the show.

All persons, young and old alike, are cordially invited—if you are a "rock-hound," so much the better.

Baxter L. Smith

## Who Are The Senior Oil Scientists?

(Continued from Page 1)

decided upon and constructed. Perhaps our best model, and surely the most complicated, is a model oil field complete with simulated wells, built by Dave Folger. Other members devised demonstrations and wrote the accompanying script. When all this material was assembled, the group chairman edited this material. Inasmuch as all of the group members were from the petroleum industry, the applications had distinctly "oily flavor."

The program started out to cover two 50 minute class periods but that schedule lasted only through the dry-run stages. On the first assignment, the team was to meet a first period chemistry class and a specially arranged physics class for the second period. The inevitable happened — like the man who came to dinner — they stayed for all class periods that day and lectured and demonstrated before as many students as the "lab" would hold. The die was cast, and the performance was repeated at 21 other high schools.

Under the continuing sponsorship of the Mississippi Academy of Sciences jointly with the National Science Foundation, and coordinated by the Mississippi Petroleum Committee, the Senior Oil Scientists began the second year of their lecture program in November of 1960.

Due to the success and welcome acceptance of a program of this nature the Senior Oil Scientists now have 21 men on their roster of visiting scientists. Those participating at present are: Elwood L. Horstman and Bruce I. Susong from the California Co., Lysle A. Gust and M. E. Chandler from the Carter Div. of Humble Oil and Refining Co., R. N. Arrington from Continental Oil Co., J. F. Eiserloh and Lonnie A. Wells from Gulf Oil Corp., Wilbur R. Lilly and Harold R. Mayer from the consulting firm of Lilly & Mayer, J. C. Wilson from Ohio Oil Co., T. Deane Rodgers from Pan American Petroleum Corp., John M. McLain, K. A. Ring, E. G. Warren, and Clinton P. Crocker from Shell Oil Co., George R. White from Sinclair Oil and Gas Co., Baxter L. Smith from Sun Oil Co., Robert B. Ross, Jack D. Wallner, and C. R. Hewitt from Tennessee Gas and Oil Co., and Ted R. Russell from Atlantic Refining Co.

Other than the fact that most of the participants in this year's program are members of the Mississippi Geological Society, the society has no direct connection with this group. The Mississippi Geological Society gives the Senior Oil Scientists its wholehearted endorsement.

Under the continued chairmanship of the author, a Sun Oil Company paleontologist, the group has undertaken the visitation of 20 more of Mississippi's high schools. Last year 22 schools were visited, and no doubt there will be a few extra ones worked into the schedule this year.

This group of men, and their respective companies are to be highly commended for the valuable service they are rendering to their state and its several communities. No doubt, many people may wonder just what the inducement is that would prevail upon so many men to give of their time and energies to a program of this nature. All of those participating fully realize that they are not the "dedicated teacher" type. It seems that the key to the entire program is the personal satisfaction derived by each individual from the belief that by his efforts some student, or students, may have gained an idea which in the future may develop into some method, some device, or some service for the benefit of mankind. This is the remuneration of the group known as the Senior Oil Scientists.

Baxter L. Smith



## February Meeting Announcement

Date: Tuesday, February 7, 1961  
Place: Sun 'n Sand  
Time: Luncheon Meeting  
Speaker: Tracy Lusk, Director Mississippi State Geological Survey  
Subject: "Mississippi Geological Society Sample and Core Repository" — With comments by Claude Smith. Union Producing Company, A.A.P.G. Committee for Preservation of Cores sand Samples on "Geologists Responsibility for Quality Control of Samples and Cores."

### Entertainment Committee

Armand Ricci, Chairman, reports that arrangements are being made for a Golf Tournament and Spring-Dance, April 28th at the Colonial Country Club. Details will be announced in future News Bulletins.

## MISSISSIPPI GEOLOGICAL SURVEY SAMPLE LIBRARY

As a result of action taken at the September 1958 meeting of the Mississippi Geological Survey Board, the State Geologist began planning a program to secure funds necessary to construct and equip a Sample Library. In December of that year the Survey Board presented the proposal to the Mississippi State Building Commission, and requested a site and the funds needed to complete the project. The request was not without favor. The Building Commission, headed by the Governor, agreed to furnish the land and approximately half of the estimated cost with the provision that the remaining funds were to be obtained from the petroleum industry. At this stage the estimated cost was \$35,000.

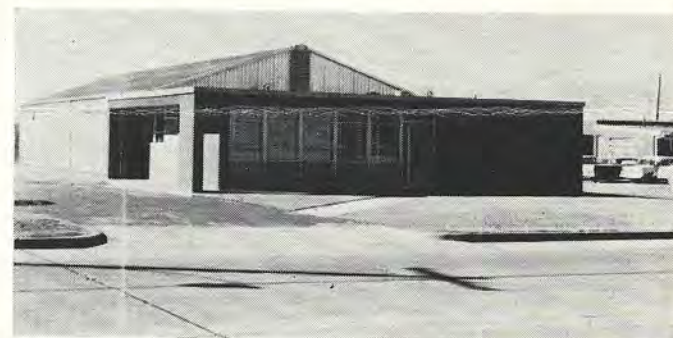
Despite the fact that such a method of financing had not been contemplated, it nevertheless became essential to contact the companies operating in Mississippi for contributions if the project was to succeed. For the most part company response was good. By late 1959, the amount of the contributions was virtually known. The total contributions amount to \$21,950. The Building Commission, in addition to the lot, made a cash outlay of \$20,000. The sum total of these two figures represents nearly all of the cost of the building and the furnishings and equipment therein.

The purposes of the Sample Library are to serve as a permanent repository for the preservation of samples (cuttings and cores) from wells drilled in Mississippi, and to make them readily available for study to any interested party. Actually, for some companies that have maintained private collections, the Sample Library will save them considerable expense by eliminating storage costs.

Through the years, the Mississippi Geological Survey has maintained a fairly good set of samples in its building at University, Mississippi, and the collection has been steadily growing. However, shelving space was filled to capacity several years ago. In addition to this set, the Survey has been the recipient of two complete company sets as well as major parts of several others. All total the Survey collection consists of approximately 1800 wells covering 74 counties in the State.

Although the main office of the Survey is located at University, it was decided that for the best interest of the State, the Sample Library should be located in Jackson, the focal point of the Mississippi petroleum industry. The building is located at 2525 North West Street.

The Mississippi Geological Survey Sample Library, has been in operating order since October 1960. That is to say,



it is staffed and has its complete set of samples catalogued. This is an especially fine record when the fact is considered that the building was not ready for occupation until June of 1960. The staff consists of a stratigrapher as manager and a secretary-receptionist.

The library has an overall floor space of 4,400 square feet. The front 1,200 square feet is an air conditioned brick office space divided into a manager's office, a reception room, a laboratory for processing samples, and an examination room. The processing room is adequately equipped for washing, drying, and packaging the samples. The examination room has built-in tables partly enclosed by partitions to provide semi-privacy for geologists working samples.

The rear 3,200 Square feet is a pre-fabricated steel and aluminum warehouse-type structure where the samples are shelved. The existing collection occupies only about one-third of the total storage capacity and it has been estimated that this collection represents at least 75 percent of a complete obtainable set. Therefore, the facility has considerable space for future samples. It should also be noted that the building was constructed so that it could easily be enlarged by adding on to the rear.

Inasmuch as several companies desired to continue to receive a cut of the samples, the Survey worked out an arrangement whereby the Jackson Sample Cut would continue its service and also process the samples for the Library and perform these duties at the Sample Library. The Jackson Sample Cut began operations at the Library in November 1960.

All of the in-print publications of the Mississippi Geological Survey are available for over-the-counter distribution at the Library. It is hoped that full use will be made of this facility, which is conveniently located away from the downtown congestion. Adequate parking is another pleasant convenience.

Tracy Lusk



NEWS BULLETIN SPONSORS

**NEELY BLUE PRINT & SUPPLY CO.**  
 FL 4-3523 JACKSON, MISS.

---

**BAROID WELL LOGGING SERVICE**  
 FL 2-6629 JACKSON, MISS.  
 DAN GOSSAGE

---

**SCHLUMBERGER WELL SURVEYING CORP.**  
 FL 2-8589 JACKSON, MISS.

---

**EDGAR TOBIN AERIAL SURVEYS**  
 Capitol 3-6203 SAN ANTONIO, TEXAS

**CORE LABORATORIES, INC.**  
 FL 3-0924 JACKSON, MISS.

---

**L. L. RIDGWAY CO., INC.**  
 FL 5-4751 JACKSON, MISS.

---

**P. G. A. C.**  
 FL 2-4337 JACKSON, MISS.

---

Insist on the bag with the Golden Tag  
**HUBCO SAND SAMPLE BAGS**  
 Write for free sample  
 HUTCHINSON BAG CORP., HUTCHINSON, KANSAS

PROFESSIONAL CARDS

**XAVIER M. FRASCOGNA**  
 INDEPENDENT GEOLOGIST  
 P. O. Box 10653  
 Westland Station  
 Jackson 9, Mississippi  
 Phone FL 5-2956

FLetwood 5-1528  
**WILBUR H. KNIGHT**  
 Consulting Geologist  
 901 FIRST NATIONAL BANK BUILDING  
 JACKSON 1, MISSISSIPPI

**H. MACK COX**  
 CONSULTANT  
 FL 2-7524 810 STANDARD LIFE BLDG.

**ROBERT R. PHILLIPS**  
 CONSULTING GEOLOGIST  
 FL 3-7964 DEPOSIT GUARANTY BANK BLDG.

THE GUSHER

**CALCO:** WELDON SAYLOR has resigned his position with The California Company to accept a position as geologist with Nadel and Gussman in Tulsa Oklahoma. JOE SIEGMUND has been transferred from Jackson to Harvey, Louisiana where he will be an Area Production Geologist. MARVIN HORTON has been transferred from Geophysics to the Exploration Department, Jackson, where he will be an Area Geologist.

**HUMBLE:** Effective January 7th the Monterey Oil Company began operating as the Monterey Division of the Humble Oil & Refining Company. JIM BRYAN continues as the local geological representative.

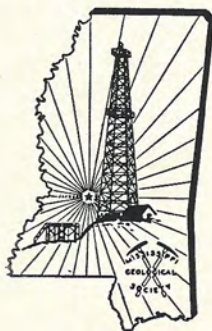
**MOBIL:** JIM PERKINS, geologist, transferred to Houston.

**PAN AM:** JOHN C. WEAVER has resigned to become an Independent Geologist in Jackson.

**RIG TIME:** C. D. MILLER has been promoted from Operations Manager to General Manager and transferred from Jackson to the home office at Shreveport.

NEWS BULLETIN

P. O. Box 2607  
 Jackson, Miss.



**Mississippi Geological Society NEWS BULLETIN**



# News

# BULLETIN

MISSISSIPPI GEOLOGICAL SOCIETY

VOLUME VIII

MARCH, 1961

NUMBER 3

## "GULF COAST TYPE LOCALITY DESCRIPTION"

At the August 8, 1960 meeting of the Executive Committee of the Gulf Coast Association of Geological Societies a resolution was adopted to encourage the cooperation of the local geological societies with the Gulf Coast Section of SEPM in planning field trips so that Gulf Coast type localities will be visited in a systematic manner.

This resolution was designed to assist in a major project that the Gulf Coast Section of SEPM now has in progress. Several years ago, E. H. Rainwater, Shell Development Co., Houston, Texas, suggested that we undertake the task of redescribing the Gulf Coast type localities and/or the designation and description of reference (alternate) localities. The need for this arises from a variety of causes: outcrop type localities being damaged, destroyed or covered with water or construction; inadequate or erroneous original description; subsequent discovery of localities better than the one originally described; in addition, stratigraphic names have been used in areas far removed from the type localities, for sections which may be entirely dissimilar to the units to which the names were originally applied. This project is to cover all Mesozoic and Cenozoic stratigraphic units of the Gulf Coast, both surface and subsurface. It is recognized that many of the larger units, as Wilcox Trinity, etc., cannot be treated in the same manner as the units which have a definite type locality or type section; therefore, a supplement is planned to discuss the original and present usage of all such terms, together with a description of type areas and typical sections.

H. V. Andersen, of the LSU Geology Department, is serving as editor of this project. He has proposed that all descriptions of type or reference localities be sent to him to be redrafted for uniformity before being published. Publication will be in loose-leaf form so that additions can be inserted later. The initial set of "Gulf Coast Type Locality Descriptions," consisting of approximately 25 localities, went on sale at the recent G.G.A.G.S. convention in Biloxi.

With an excess of 500 type localities in the Gulf Coast, this assignment is too large for any one group to adequately handle, but it can be accomplished with the help of the local geological societies and surveys, and the college and university geology departments of the area. It has been asked that in future field trips, our society visit the type localities or desirable reference localities of our area. It has further been requested that some designated individual (s) be assigned to describe each such locality.

A list of the localities which are now assigned to indi-

viduals may be obtained from Charles W. Stuckey, Union Oil Company of California, Houston, Texas.

The value of this complete project is surely evident. It will be useful as reference material to all geologists who work in the Gulf Coast and to many geologists in other parts of the world; and, it certainly will be convenient to find all of the type localities of the Gulf Coast in one publication.

—o—

### MISSISSIPPI ACADEMY OF SCIENCES TO HOLD MEETING AT MISSISSIPPI SOUTHERN COLLEGE

The 25th meeting of the Mississippi Academy of Sciences will be held April 28-29 at Mississippi Southern College, Hattiesburg. The purpose of the Academy is to encourage scientific research and to promote the development of interest in scientific matters in the State. The Academy is affiliated with the American Association for the Advancement of Science (AAAS).

Tentative programming for the coming meeting assures a full schedule. Some of the highlights of the meeting include the business meeting, general session and the Junior Academy and Science Fair events.

Sectional meetings will include technical papers on Physical Sciences, Biological Sciences, Psychology, and the Earth Sciences. Anyone who might desire to give a paper at this meeting should immediately contact Dr. Bahngrell W. Brown, Mississippi Southern College, Station A, Hattiesburg, Mississippi.

The Academy needs your support — it can help you! Annual dues are \$2.00. Anyone desiring to become a member and support the Academy's program should make check payable to Mississippi Academy of Sciences and mail to Dr. Clyde Q. Sheely, Secretary-Treasurer, Mississippi State University, State College, Mississippi.

### SPONSORS

For the past year this News Bulletin has been made possible by the cooperation of the companies that are listed on Page Four. Take note and . . .

SUPPORT OUR SPONSORS



## MISSISSIPPI GEOLOGICAL SOCIETY

(Affiliated with the American Association of Petroleum Geologists  
& Gulf Coast Association of Geological Societies)

### Executive Committee

R. V. Ewing, Dixie — President  
 E. R. Adams, Shell — Vice President  
 Alan Jackson, Humble — Secretary  
 D. E. Herlihy, Mobil — Treasurer  
 J. L. Ashman, Monsanto — Program Chairman  
 M. F. Kirby, Independent — Past President

### News Bulletin Staff

D. C. Davis, Continental — Editor  
 D. D. Brown, Continental — Assistant Editor

### Correspondents

G. K. Anderson,	Ohio
J. D. Bryan,	Monterey
C. D. Champlin,	Pan American
J. R. McElroy,	California
W. E. Taylor,	Union Producing

## TREASURER'S REPORT

JANUARY 15, 1961 — FEBRUARY 15, 1961

### On Hand — January 15th

Checking Account — Deposit Guaranty \$ 1,873.99  
 Savings Account — First Federal 2,216.75

### INCOME STATEMENT

	Income	Expense
<b>Publications</b>		
Sales Tax		9.74
Receipts from sales	323.48	
<b>1960 Field Trip</b>		
Guide book ad	125.00	
<b>Entertainment Committee</b>		
Meeting expenses		90.68
Spring Dance — Contributions	445.00	
<b>Newsletter</b>		
Ads	60.00	
Printing & Mailing		100.45
<b>Administrative</b>		
Membership dues	63.00	
Ad — Gem Society		25.00
Stamps — bank charges		4.20
Society Card — AAPG		32.50
	\$1,016.48	\$262.57
<b>On Hand — February 15th</b>		
Checking Account		\$2,627.90
Savings Account		2,216.75
Paid members to date — 331		

## COMMITTEE REPORTS

### Program Committee

John Ashman, Monsanto, has replaced Don Franklin as chairman of this committee.

Scheduled future meetings are as follows:

March 30            6:00 P.M.            Rotisserie

Speaker: Dr. L. L. Nettleton, Geophysical Associates International

Subject: Gravity and Magnetism for Seismologists

April 11            12:00 Noon            Sun-n-Sand

Speaker: Dudley J. Hughes, Triad Drilling Company

Subject: Faulting Associated with Deep Seated Salt Domes in the Northeast Portion of the Mississippi Salt Basin

This is a revised version of the prize winning paper of the same title presented at the G.C.A.G.S. convention in

## Committee Reports (Continued)

Biloxi last year. It will be given in April at the A.A.P.G. convention in Denver.

May 17            Time to be announced            Milner's Lodge  
 Annual meeting for election of officers

Several additional meetings are planned but as yet unscheduled.

### Field Trip Committee:

Tentative plans made by your Executive Committee call for a trip to the Paleozoics of Arkansas this Fall, held with the cooperation of the Arkansas Geological Survey. Volunteers for any and all phases of the trip activities are requested to call Rudy Ewing, Dixie Geological Service, at FL 3-6323.

### Boy Scout Committee

Harold Karges, consulting geologist, has been appointed Chairman of this committee.

## SECOND ANNUAL MISSISSIPPI GEM AND ROCK SHOW

On February 18 and 19, 1961, the Mississippi Gem and Mineral Society held its second statewide gem, mineral, rock, and fossil show at the State Fair Grounds. The show this year was a greater success than last year and had an attendance of over 3000 persons. Many striking and spectacular exhibits were on display.

The feature of the show this year was the presentation, by Mrs. Ward (Mary) Aspaas, of Arizona, of a considerable repertoire of music played upon a xylophone-like, homemade instrument whose keys were natural slabs of phonolite (a type of intrusive rock). Mrs. Aspaas has been billed in similar shows across the country as the lady with "The Singing Rocks." The most popular piece was "Dixie," often accompanied by "rebel" yells.

The Mississippi Geological Society had an exhibit of electric logs mounted on a backboard from which ribbons led to bottled samples of crude oil and core specimens of the formations which produced the oil. This was a very informative and interesting exhibit which elicited much favorable comment. At the Society exhibit some member of the society was always on hand to answer questions and explain the significance of the exhibit. Those members who took part were: Don Champlin, Bob Vesper, Armando Ricci, Mark Dyott, A. J. Lopez, Elwood Harris, Jack Lane, Rudy Ewing, Dave Robbins, Fleming Browning, Frank Ward, Harold Karges, Bill Lynch, Leland Culligan, Dave Folger, and Curtis Humphris.

One of our local geologists who collects, swaps, trades, and is generally interested in rocks and minerals as a hobby is Hall Trichel. Hall is a shy, unassuming person, who had to be persuaded to enter some of his specimens. When the competitive judging was over, Hall Trichel had won several blue ribbons and "best of shows" in the adult division.

The Judging Committee was a splendid cross-section of the teaching and working geologists of the State. This committee included: Doctors R. R. Priddy, B. W. Brown, Olin T. Brown, David DeVries, Ernest E. Russell, and Paul H. Dunn, and in addition local society members: Ed Blanton, Emmett Adams, and Bill Moore.

Those of you who failed to attend this exhibition missed a treat which cannot be experienced again until next year.

Baxter L. Smith



**SHREVEPORT GEOLOGICAL SOCIETY  
1961 FIELD TRIP TO CRETACEOUS OF SW  
ARKANSAS AND SOUTH OKLAHOMA**

The trip, entitled, Cretaceous of SW Arkansas and SE Oklahoma, will be made in chartered buses from Shreveport with busses leaving from the Captain Shreve Hotel at 7:30 A.M., Friday, March 24.

The Grim Hotel in Texarkana will house the group with first day ending around 6:00 P.M. Departure Saturday morning, March 25, will be at 7:30 A.M. from the Grim Hotel. After completing the tour of outcrops, the busses should return to Shreveport by 7:45 P.M. Saturday.

The trip which covers 566 miles will be led by Kemper R. Scott and William E. Hayes, both of Humble Oil & Refining Company at Shreveport. The party will visit most of the classic localities in the Cretaceous previously visited by Shreveport Geologists. This will probably be the last organized trip to see the complete exposure at White Cliffs on the Little River, due to the fact that the proposed Millwood Dam will inundate the lower part of the section.

Of new interest will be the inspection of one of the asphalt seepages in the Trinity, examination of contacts of the Pike gravels on the Atoka and Jackfork formations, a brief visit to the Washita — Fredericksburg in the Idabel area of Southeast Oklahoma, and also some new and deeper road cuts along the route.

The Guide Book includes a road log with descriptions of outcrops and is accompanied by a map of the route showing stops. Also planned for the book, are brief papers covering the following fields of North Louisiana and South Arkansas: Tew Lake, Sugar Creek, Calhoun, Harrisonburg, Cottage Grove, Winchester, and Sandy Bend. The book will be offered for sale at time of the trip. The price has not yet been determined.

Pre-registration for the trip costs \$18.00. This covers bus transportation, two box lunches, and a copy of the Guide Book. Contact Jack M. Johnston, Petersen Drilling Company, Inc. no later than March 17, 1961.

Participants will be required to make their own hotel reservations for the night of March 24 at the Grim Hotel in Texarkana. Rates are: Single \$4.50 - \$5.00; Twin Beds \$7.00.

**DINNER MEETING:** The Society has scheduled a pre-trip dinner meeting on Thursday, March 23, 1961 at the Petroleum Club in the Petroleum Tower in downtown Shreveport. A social hour from 5:30 to 6:30 P.M. will be followed by dinner (2.75 per person). After dinner, a paper on the Eagle Mills formation will be given by Mr. K. R. Scott of Humble Oil and Refining Company.

**CULLIGAN AND HUGHES ELECTED A.A.P.G.  
DISTRICT REPRESENTATIVES**

A count of the number of active members of the A.A.P.G. in the Mississippi District has made us eligible for a total of three District Representatives. At the recent election Leland B. Culligan and Dudley J. Hughes were chosen to serve from 1961 — 63 with holdover Gene O. Davis whose term expires in 1962.

Among the duties of the District Representatives is service on the A.A.P.G. Business Committee. They also assist in determining the eligibility of applicants for membership.

Professional cards (see page 4) are available to resident (Mississippi-based) members of the Mississippi Geological Society as individuals. The cost is \$15 for 6 consecutive issues starting with the first insertion.

**COMPREHENSIVE MAJOR MEDICAL AND  
DISABILITY INCOME PLAN TO BE  
AVAILABLE TO MISSISSIPPI GEOLOGICAL  
SOCIETY MEMBERS**

Your Executive Committee, through a special Insurance Committee, has for some time been investigating various plans of Health Insurance. Recently the result of the work of the Insurance Committee was announced at the February 7 meeting of the Society.

A low cost Comprehensive Major Medical and Disability Income Plan is to be offered to the individual members of the Society on an optional basis. You will be contacted by mail and receive explanatory material. Those of you not desiring to receive the mailings will have the opportunity to have your name removed from this special mailing list by returning a card enclosed in the first mailing.

Please understand that your Society is not selling this Plan. We are not and do not wish to become Insurance Agents. For the benefit of those of you who have a need for this type of Insurance, we are making available a Plan which is low in cost and extensive in coverage. This Plan is presently in effect through the New Orleans Geological Society and is also being offered to Lafayette, Shreveport, San Antonio and others. The big advantage is that all of the plans will be pooled together to further guarantee the rates and add stability.

The Major Medical Plan will pay up to \$10,000 per illness with a choice of \$100 or \$500 deductible. All medical expenses are covered. Many of you may have a basic hospitalization plan now, either individually or through your Company. A man after age forty (40), for example, may supplement his plan with a \$500 deductible plan for less than \$4.00 per month. This will not only cover him but also his wife and all of his children.

Very few of us have a formal plan of Disability Income. Most plans pay only for short periods of time. The Disability Income Plan which will be made available to you through your Society will pay benefits for life if your disability is caused by an accident and five (5) years if resulting from sickness. Here again you will have your choice both as to amounts (maximum \$500 per month) and also waiting period (30 or 90 days).

Jack J. Kingston and Associates is the Broker of Record and is representing us to the Underwriting Company, American Casualty Company of Reading, Pennsylvania. The Plan is being administered through Gilsbar, Inc. of New Orleans. Both groups mentioned are professionals in their field and we are certain will do a good job for us.

**PAN-AM OILERS FIRST HALF CHAMPS  
IN PETROLEUM BOWLING LEAGUE**

Two Pan-Am teams, the Oilers and Pets, tied for first place at the end of the first half of the Jackson Petroleum League 1960-61 season with 94-58 records. The Pets were defeated 2804 to 2647 in a total pin play-off.

Through the first half the following marks are high:

High team series	Pan-Am Pops	2956
High team game	Larco	1097
Indiv. scratch game	Troutman, Conoco	265
Indiv. handicap game	Troutman, Conoco	284
Indiv. scratch series	Ohnoutka, Pan-Am Oilers	598
Indiv. handicap series	Bertolet, Pan-Am Pops	676
Indiv. high average	Myers, Independents	172

The second half winners will meet the Pan-Am Oilers in a play-off for the league championship.



NEWS BULLETIN SPONSORS

**NEELY BLUE PRINT & SUPPLY CO.**  
 FL 4-3523 JACKSON, MISS.


---

**BAROID WELL LOGGING SERVICE**  
 FL 2-6629 JACKSON, MISS.  
 DAN GOSSAGE

---

**SCHLUMBERGER WELL SURVEYING CORP.**  
 FL 2-8589 JACKSON, MISS.

---

**EDGAR TOBIN AERIAL SURVEYS**  
 CApitol 3-6203  SAN ANTONIO, TEXAS

**CORE LABORATORIES, INC.**  
 FL 3-0924 JACKSON, MISS.

---

**L. L. RIDGWAY CO., INC.**  
 FL 5-4751 JACKSON, MISS.

---

**P. G. A. C.**  
 FL 2-4337 JACKSON, MISS.

---

Insist on the bag with the Golden Tag  
**HUBCO SAND SAMPLE BAGS**  
 Write for free sample  
 HUTCHINSON BAG CORP., HUTCHINSON, KANSAS

PROFESSIONAL CARDS

**XAVIER M. FRASCOGNA**  
 INDEPENDENT GEOLOGIST  
 P. O. Box 10653  
 Westland Station  
 Jackson 9, Mississippi  
 Phone FL 5-2956

Fleetwood 5-1528  
**WILBUR H. KNIGHT**  
 Consulting Geologist  
 901 FIRST NATIONAL BANK BUILDING  
 JACKSON 1, MISSISSIPPI

**H. MACK COX**  
 CONSULTANT  
 FL 2-7524 810 STANDARD LIFE BLDG.

**ROBERT R. PHILLIPS**  
 CONSULTING GEOLOGIST  
 FL 3-7964 DEPOSIT GUARANTY BANK BLDG.

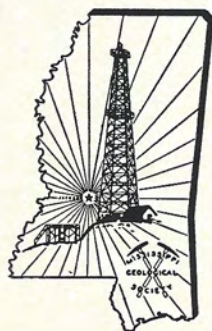
— GUSHER —

**Gulf Oil Corporation** — JAKE PERRYMAN, geologist, transferred from Fort Smith, Arkansas to Jackson. DICK PRESCOTT, geologist, transferred from Jackson to Oklahoma City, Oklahoma.

**Mobil Oil Company** — HAROLD HOLMQUEST, geologist, transferred from Houston, Texas to Jackson.

**Shell Oil Company** — KARL MALLOY, Stratigrapher, transferred from New Orleans Marine Division to Jackson.

**NEWS BULLETIN**  
 P. O. Box 2607  
 Jackson, Miss.



**Mississippi Geological Society NEWS BULLETIN**



# News

# BULLETIN

MISSISSIPPI GEOLOGICAL SOCIETY

VOLUME VIII

MAY, 1961

NUMBER 4

## ELECTION TIME . . . MAY 17TH

### REPORT OF NOMINATING COMMITTEE

The Nominating Committee as appointed by the Executive Committee, and composed of Donald C. Gifford, W. D. Lynch, Emil Monsour, Henry N. Toler, and Felix Webster, submits to the Society its nominees for office during the year 1961 - 1962:

**For President:** Emmett R. Adams, Edward B. Lanuius and Xavier M. Frascogna.

Adams is currently Vice President, having served as Treasurer 1957 - 58, member of the Cenozoic Committee—3 years, GCAGS Committee—3 years, including the position of Associate Editor for 3 years. Type Locality Committee—1 year, Field Trip Committee—2 years (Co-chairman—1 year), Publications Committee Chairman—1 year. In addition he has served as local representative of the SEPM for 6 years and was editor of the SEPM portion of the GCAGS 1 year. He has been a member of our Society 10 years.



Emmett R. Adams

Lanuius has been a member of our society for 7 years, having served as Chairman of the Golf Tournament Committee in 1960. In addition to his affiliation with our society he is an active member of the Independent Petroleum Association of America, and the Mid-Continent Oil & Gas Association and an Associate member of the Mississippi Landmen's Association.



Edward B. Lanuius

Frascogna has been a member of the society for 9 years, has served on the Boy Scouts and Entertainment Committees, was Associate Editor for the GSAGS Transactions in 1955 and editor of the "Red Book," Vol. I of "Mesozoic and Paleozoic Producing Areas of Mississippi and Alabama," published by our society in 1957. In addition he served on the GCAGS convention committee 1 year and was state school chairman of the Oil Industry Information Committee of the API in 1956-57 for which he was presented the API Silver Award.



Xavier M. Frascogna

**For Vice President:** Lester J. Ringenberg and Robert T. Violette.

Ringenberg has been a member of the Society 4 years, was Entertainment Committee Co-chairman 1 year, chairman of the Nominating Committee 1 year and served as Advertising Committee chairman for the GCAGS.



Lester J. Ringenberg

Violette has been a member of the Society 10 years, was on the Projection committee 3 years (chairman 2 years), served on the Wilcox Guidebook, Program, Nomenclature, and Publication Committees. In addition he was Editor for the Newsbulletin 1 year.



Robert T. Violette

### SPONSORS

For the past year this News Bulletin has been made possible by the cooperation of the companies that are listed on Page Four. Take note and . . .

**SUPPORT OUR SPONSORS**



**MISSISSIPPI GEOLOGICAL SOCIETY**

(Affiliated with the American Association of Petroleum Geologists & Gulf Coast Association of Geological Societies)

**Executive Committee**

- R. V. Ewing, Dixie — President
- E. R. Adams, Shell — Vice President
- Alan Jackson, Humble — Secretary
- D. E. Herlihy, Mobil — Treasurer
- J. L. Ashman, Monsanto — Program Chairman
- M. F. Kirby, Independent — Past President

**News Bulletin Staff**

- D. C. Davis, Continental — Editor
- D. D. Brown, Continental — Assistant Editor

**Correspondents**

- G. K. Anderson, Ohio
- J. D. Bryan, Monterey
- C. D. Champlin, Pan American
- J. R. McElroy, California
- W. E. Taylor, Union Producing

**TREASURER'S REPORT**

MARCH 15, 1961 — APRIL 17, 1961

**On Hand — March 15th**

Checking Account — Deposit Guaranty \$ 2,296.45  
Savings Account — First Federal 2,216.75

**INCOME STATEMENT**

**Publications**

Sales Tax — 1st Quarter 3.21  
Receipts from Sales 79.81

**Entertainment Committee**

Meeting Expenses 92.04  
Dance Expenses 97.57  
Dance Contributions 823.61  
Dance Ticket Sales 630.00  
Meeting 630.00  
Refund of Advance 10.00

**Newsletter**

Printing and Mailing 87.05

**Administrative**

Miscellaneous Expense 47.83  
Dues 45.00

\$1,590.92      \$327.70

**On Hand — April 17th**

Checking Account \$3,559.67  
Savings Account 2,216.75

Paid Members to date — 350

**LAST MEETING OF THE YEAR**

**Election of Officers**

- Date: Wednesday, May 17th
- Place: Dumas Milner Lodge
- Time: 5:00 - 6:00 PM Voting
- 6:00 - 7:00 PM Beer
- 7:00 - ? PM Buffet (German Smorgasbord)

Reservations for this meeting are a Must!!

FREE FREE FREE

FREE FREE FREE

**Report of Nominating Committee (Continued)**

**For Secretary:** David C. Davis and Armand T. Ricci.



David C. Davis

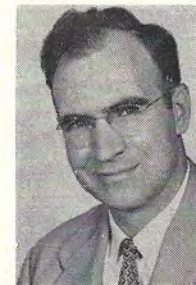
Davis has been a member of the Society for 4 years and has served on the GCAGS Committee and is currently Editor of the Newsbulletin.



Armand T. Ricci

Ricci has been a member of the Society 6 years, was chairman of the Projection Committee 2 years, member of the Nomenclature Committee 4 years and is currently the Entertainment Committee Chairman.

**For Treasurer:** Leland B. Culligan and Baxter L. Smith



Leland B. Culligan

Culligan has been a member of the Society 8 years, was chairman of the Blood Bank Committee 2 years, and a member of the GCAGS Program Committee last year. He has served 1½ years as AAPG regional representative and was elected for an additional 3 year term.



Baxter L. Smith

Smith has been a member of the Society 8 years, was chairman of the Boy Scout Committee 1 year and is a Merit Badge Examiner. He was co-leader of the Offshore Field Trip last year and in addition has been very active in the Mississippi Gem and Mineral Society during its 3 year existence (immediate past president). Also Smith is chairman of the Senior Oil Scientist School visitation group

The Nominating Committee is appreciative of the cooperation of all members contacted in this effort, and is of the opinion that this group of candidates displays an unusual concentration of dedicated individuals, any combination of which should serve the Society well.

Respectively submitted,  
W. D. Lynch, Chairman



## EAST TEXAS GEOLOGICAL SOCIETY ANNOUNCES PUBLICATION OF NEW PAPER

The East Texas Geological Society, Tyler, Texas, wishes to announce that a paper entitled "Development and Future Possibilities of the Jurassic in Northeast Texas," has been published and is now available through the Society on an individual order basis. Mr. R. W. Eaton, author of this paper, is Exploration Manager with P. G. Lake, Inc. of Tyler, Texas, and has presented his paper to geological society groups on several occasions, including the 1960 G.C.A.G.S. convention at Biloxi, Mississippi. A resume of this work will be forthcoming probably in the May, 1961, issue of WORLD OIL.

"Development and Future Possibilities of the Jurassic in Northeast Texas," has been published in the form of a 14 page paperback booklet complete with structure, isopach, facies maps and cross sections. Particular emphasis is given to the Smackover limestone in this paper.

The price of Mr. Eaton's paper is \$1.50 plus \$ .10 per copy postage, and can be obtained by writing or sending one of the enclosed order blanks to:

Mr. R. G. McKellar  
British American Prod. Co.  
904 Bryant Pet. Bldg.  
Tyler, Texas

## GEOLOGISTS ISSUE SLIDE MANUAL

"Better slides for better meetings" is the objective of the new **Slide Manual** published by the American Association of Petroleum Geologists, Tulsa, Oklahoma, according to William R. Moran, Union Oil Company of California, Los Angeles, Chairman of the A.A.P.G. Projection Slide Committee which prepared the Manual.

The 28-page, 3 color "Guide to the Preparation and Use of Projection Slides" features 8 charts and tables as the key to legible and attractive slides for visual projection at large or small meetings. Illustrations of good and poor slides and slide copy offer authors of technical papers practical tips on how to make effective slides in color or black and white.

Published December 13, the Manual has already won praise from leading authorities in the audio-visual field. Don White, Executive Vice-President of National Audio-Visual Association, Fairfax, Virginia, writes: "It is a beautiful job; I've been in the audio-visual field for 23 years and I have never seen a similar publication which approaches the quality or completeness of yours."

Issued as an A.A.P.G. contribution to the improvement of technical and scientific meetings, the new Manual is offered for general distribution. Priced at \$1.25, post-paid, with discount on orders for 26 or more copies, the Manual is available from the American Association of Petroleum Geologists, Box 979, Tulsa 1, Oklahoma.

In the 2-1/2 year preparation of the A.A.P.G. Slide Manual, Committee Chairman W. R. Moran was aided by Carl A. Moore, School of Geology, University of Oklahoma, Laurence L. Sloss, Department of Geology, Northwestern University, and Elmer W. Ellsworth, Business manager of A.A.P.G. John E. Asher, Mobil Oil Company, Los Angeles, was in charge of design, layout, and production.

## COMMITTEE REPORTS

### Nomenclature

The Nomenclature Committee has recommended the following field names for new producing areas:

Field Name (Formation)	Discovery Well, Gauge, Date
JOHNSTON STATION (Lwr. Tuscaloosa)	Humble Oil & Refining Company No. 1 May-Love Unit, Sec. 1, T4N-R7E, Pike Co., Miss. IPF 185 BOPD + 68.4 MCFGPD, 1/8" chocke, TP 1200#, Gr. 39° API GOR 368/1. Completed 12-12-60.

BENTONIA (Hosston)	Humble Oil & Refining Company No. 1 Eloise Hicks Thompson Sec. 3, T9N-R1W, Yazoo County, Miss. IPF 305 BOPD + 115.29 MCFGPD, 16/64" choke, TP 420#, Gr. 40.4° API, GOR 378/1, Com- pleted 12-28-60.
-----------------------	---

TRAXLER (Rodessa)	Triad Oil & Gas Company, Jett Drlg. Co., Inc. No. 1 Dukes - Central Unit, Sec. 36, T3N-R6E, Smith Co., Miss. IPF 130 BOPD + 61 MCFGPD, 10/64" choke, TP 600#, Gr. 36.8° API, GOR 469/1, Completed 1-13-61.
----------------------	--

GILLIAM CHUTE (Lwr. Tuscaloosa)	Argo Oil Corp. & Chartor Oil Co. No. 1 Burkley-Phillips Unit, Sec. 14, T10N-R2W, Jefferson Co., Miss. IPF 182.5 BOPD + 392 MCFGPD, 1/8" choke, TP 2275#, Gr. 42.3° API, GOR 2150/1, Com- pleted 3-25-61.
------------------------------------	--

### — GUSHER —

GULF — BOB MARTIN, geologist, transferred from Laurel to Jackson.

HUMBLE — Humble Oil announced plans for reorganization of their Southeastern Region. Regional Office will be located in New Orleans and will handle all operations in Louisiana, S. Arkansas, Mississippi, Alabama, Tennessee, Florida, Georgia, and Eastern Seaboard. There will be two area officers, one in New Orleans and the other in Jackson. Under the Jackson office there will be two district offices — Shreveport and Hattiesburg. Personnel in the Jackson office will include:

Area Manager — R. W. Gemmer  
Area Expl. Manager — F. D. Richardson  
Area Prod. Manager — J. D. Exner  
Area Geologist — R. Beall  
Area Expl. Geologist — F. B. St. John  
Area Prod. Geologist — to be named later.



NEWS BULLETIN SPONSORS

**NEELY BLUE PRINT & SUPPLY CO.**  
 FL 4-3523 JACKSON, MISS.


---

**BAROID WELL LOGGING SERVICE**  
 FL 2-6629 JACKSON, MISS.  
 DAN GOSSAGE

---

**SCHLUMBERGER WELL SURVEYING CORP.**  
 FL 2-8589 JACKSON, MISS.

---

**EDGAR TOBIN AERIAL SURVEYS**  
 Capitol 3-6203  SAN ANTONIO, TEXAS

**CORE LABORATORIES, INC.**  
 FL 3-0924 JACKSON, MISS.

---

**L. L. RIDGWAY CO., INC.**  
 FL 5-4751 JACKSON, MISS.

---

**P. G. A. C.**  
 FL 2-4337 JACKSON, MISS.

---

Insist on the bag with the Golden Tag  
**HUBCO SAND SAMPLE BAGS**  
 Write for free sample  
 HUTCHINSON BAG CORP., HUTCHINSON, KANSAS

PROFESSIONAL CARDS

**XAVIER M. FRASCOGNA**  
 INDEPENDENT GEOLOGIST  
 P. O. Box 10653  
 Westland Station  
 Jackson 9, Mississippi  
 Phone FL 5-2956

FLetwood 5-1528  
**WILBUR H. KNIGHT**  
 Consulting Geologist  
 901 FIRST NATIONAL BANK BUILDING  
 JACKSON 1, MISSISSIPPI

**H. MACK COX**  
 CONSULTANT  
 FL 2-7524 810 STANDARD LIFE BLDG.

**ROBERT R. PHILLIPS**  
 CONSULTING GEOLOGIST  
 FL 3-7964 DEPOSIT GUARANTY BANK BLDG.

GUSHER

PAN-AM — JOHN R. WILLIS transferred from Shreveport to Jackson.

SINCLAIR — JOE B. BROWN has resigned to go to Shreveport consulting. CARL PILATTE transferred from New Orleans District offshore to Jackson.

TENNESSEE GAS — REESE BOOKER, LEROY FULGHUM, AND N. B. "LEFTY" VENUS have all resigned and entered the consulting field here in Jackson.

TEXACO — RONALD LAUGHBAUM has recently joined the Texaco here in their Jackson office. Ronald was previously employed by the Robert H. Ray Company, Midland, Texas.

NEWS BULLETIN

P. O. Box 2607  
 Jackson, Miss.



**Mississippi Geological Society NEWS BULLETIN**

Mr. Donald D. Brown  
 Continental Oil Co.  
 Box 2607  
 W. Jackson 7, Miss.

