

# News

# BULLETIN

MISSISSIPPI GEOLOGICAL SOCIETY

VOLUME VII

SEPTEMBER, 1959

NUMBER 1

## MEET THE NEW OFFICERS



M. F. Kirby, Gulf  
President



R. V. Ewing, Dixie  
Vice President



W. H. Hollingsworth, Sinclair  
Secretary



W. D. Lynch, California  
Treasurer

## REPORT FROM THE PRESIDENT

Members of the Mississippi Geological Society:

First, I would like to take this opportunity of thanking you for the splendid response which I have received since becoming your President. It has made the task a most enjoyable experience to date.

I would like to introduce the Executive Committee for the coming year:

Ruby V. Ewing, Dixie Geological Service—Vice President

William H. Hollingsworth,  
Sinclair Oil and Gas Company—Secretary

William D. Lynch, The California Company—Treasurer

Don T. Franklin, Ashmun and Hilliard — Program Chairman

Charles E. Brown—Magnolia Petroleum Company—Past President

A very ambitious program is being prepared this fall and the following spring with an emphasis being placed on as much local talent as is possible to schedule. Each of the following co-program chairmen have agreed to prepare or have prepared a scientific geological paper of approximately thirty minutes duration and of general local interest to the Society.

The Society will have its first meeting on Monday evening, September 21, 1959. At that time, Mr. Al Gilreath of Schlumberger Well Surveying Corporation will be program

chairman. A business meeting will follow. Then, on or about the following dates, the following co-program chairmen will preside:

- |             |  |
|-------------|--|
| October 8—  | Thomas C. Hiestand, Consulting Geologist, Denver, Colo.                |
| October 19— | W. H. Knight—Independent<br>Dr. R. R. Priddy—Colleges and Universities |
| November 2— | Lewis Weeks, President, AAPG   |

- |              |   |
|--------------|---|
| November 23— | F. B. St. John—Carter<br>W. D. Lynch—California |
|--------------|---|

- |             |  |
|-------------|--|
| December 7— | Bryant Mather—Waterways Experiment Station<br>James Blair—PGAC |
|-------------|--|

- |            |   |
|------------|---|
| January 7— | D. C. Davis—Continental<br>J. F. McWilliams—Union |
|------------|---|

- |             |   |
|-------------|---|
| February 4— | B. B. Spaulding—Texaco<br>R. C. Howard—Gulf |
|-------------|---|

March 3—

- |   |
|---|
| T. A. Fitzgerald—Humble<br>Emil Monsour—Sun |
|---|

April 7—

- |  |
|--|
| L. R. McFarland—Magnolia<br>G. R. White—Sinclair |
|--|

May 5—

- |  |
|--|
| W. A. Skees—Pan American<br>Phillip Eisenstatt—Shell |
|--|

## SPONSORS

For the coming year this revised News Bulletin is being made possible by the cooperation of the companies that are listed on Page Four. Take note and . . .

## SUPPORT YOUR SPONSORS

See Page 3 For Announcement of First Meeting

## MISSISSIPPI GEOLOGICAL SOCIETY

(Affiliated with the American Association of Petroleum Geologists  
& Gulf Coast Association of Geological Societies)

### Executive Committee

M. F. Kirby, Gulf—President  
R. V. Ewing, Dixie—Vice President  
W. H. Hollingsworth, Sinclair—Secretary  
W. D. Lynch, California—Treasurer  
D. T. Franklin, Ashmun & Hilliard—Program Chairman  
C. E. Brown, Magnolia—Past President

### News Bulletin Staff

R. T. Violette, Pan American—Editor  
C. D. Champlin, Pan American—Assistant Editor

### Correspondents

X. M. Frascogna, Independent  
Ray Frisby, Ohio  
M. K. Kern, Independent  
Dean Miller, Southern States  
J. J. Offenheiser, Shell  
W. E. Taylor, Union  
W. J. Thornton, Texas

### G.C.A.G.S.

C. E. Brown, Chairman  
M. F. Kirby, Alternate  
R. V. Ewing

### Preservation of Cores and Samples

C. D. Smith, Chairman

The following is a list of the standing committees with their chairmen. The committeemen are listed when known.

### A.A.P.G.

A. E. Blanton, Chairman  
Luther Powell

### Entertainment

Bob Ross, Chairman  
Al Gilreath  
Lester Ringenberg  
Ed Russell

### Field Trip

F. X. Bland, Chairman

### Nomenclature

C. G. Bilberry, Chairman

### Program

Don Franklin, Chairman  
Charles Bilberry  
John Lukert  
Don Hook  
Don Mahaffey  
Ray Frisby

### Projection

Jim Furrh, Chairman  
Charles Burnette  
Robert Johnson

### Publications

Felix Webster, Chairman

### Publicity

W. F. Browning, Chairman

### Blood Bank

Leland Culligan, Chairman  
Verne Culbertson  
Bill Hollingsworth  
Bill Lynch

### News Bulletin

Bob Violette, Editor  
Don Champlin, Assistant Editor  
Bill Thornton  
Jim Offenheiser  
Ray Frisby  
Dean Miller  
Gene Taylor  
Frank Frascogna  
Marshall Kern

The following special committee has been called upon to suggest titles and/or topics to aid the above co-program chairmen in the preparation of their programs. These titles will be forwarded to each co-program chairman upon receipt.

Clyde Alexander  
B. W. Allen  
Esther Applin  
Paul Applin  
F. F. Mellen  
W. J. Nugent  
E. M. Rice  
H. N. Toler

Each of the following have agreed to prepare a review of the Society's publication, **Mesozoic-Paleozoic Producing Areas of Mississippi and Alabama**, to be forwarded to the numerous trade journals which carry book reviews:

McIver Ross  
C. M. McDaniel  
Sam Ray  
Lester Ringenberg  
George Thomas  
Ben Ploch  
Dean Miller  
Hilton Ladner  
Emil Monsour

Another special committee has been established, the Highway Geological Marker Committee. It was felt that with the large highway building program in progress, now would be an excellent time for making a preliminary study regarding the feasibility of erecting geological markers along these new roadways. Mr. Wendell B. Johnson, Millsaps College, is the committee chairman.

Other special committees and their chairmen are as follows:

### Directory

M. M. Phillips, Chairman

### Bowling

A. E. Blanton, Chairman

### Golf Tournament

E. B. Launius, Chairman

### Boy Scout

A. F. Whatley, Chairman

Again, I wish to thank each of you for your most refreshing interest, and excellent cooperation in organizing the events of the coming year. If this enthusiasm can be maintained throughout the year, I have no doubt that this will be a year in which we will all be proud that we have belonged to the Mississippi Geological Society.

Appreciatively yours,  
M. F. Kirby, President

## GEOLOGICAL AUXILIARY ELECTS

The Geological Auxiliary announces its new officers for the year 1959-60:

President—Mrs. Dudley Hughes  
 Vice President—Mrs. Jack Oyler  
 Secretary—Mrs. Charles D. Champlin  
 Treasurer—Mrs. John Ashman  
 Reporter—Mrs. H. J. Kingry  
 Corresponding Secretary—Mrs. Charles E. Brown

From the President:

"I would like to pledge our continuing support of the Mississippi Geological Society. Mrs. A. E. Blanton is working with her husband on the convention to be held next year, and all the ladies of the Auxiliary are anxious to do their part to make the Mississippi Convention one of the best!"

Very sincerely,  
 Mrs. Dudley J. Hughes

### FIRST MEETING

Announcement of the first Society meeting of the current year is made as follows:

Date: Monday, September 21      Place: Crown Room,  
 King Edward Hotel

Time: 5:15 p.m. Cocktail Hour  
 6:00 p.m. Dinner

Technical Paper: Al Gilreath, Schlumberger Well Surveying Corporation

Business Meeting to Follow

Price: \$2.50 per person

For reservations call Bob Ross at FLeetwood 2-5054 by 4:30 p.m., Friday, September 18, 1959.

LET US ALL PLAN TO ATTEND



AL GILREATH

With an emphasis on local talent this current year, Al Gilbreath, Schlumberger Well Surveying Corporation, has the distinct honor of presenting the first technical paper of this new series before the Society. His paper is entitled, Interpretation of Dip Meter Results in Mississippi.

Al is originally from Cartersville, Georgia, and attended Georgia Tech where he received his Bachelor of Electrical Engineering Degree in 1948. He has been with Schlumberger for ten years, serving various locations in South Louisiana and Mississippi. Presently, he is with the Jackson Sales Office as Senior Sales Engineer.

To date, other regular evening meetings have been scheduled through 1959 on Monday nights as listed below:

October 19  
 November 2  
 November 23  
 December 7

All meetings will be held in the Crown Room of the King Edward Hotel, beginning at 5:15 p.m. with a Cocktail

Hour and followed by Dinner at 6:00 p.m. Interesting programs have been set up for your benefit and enjoyment.

Thus far, one NOON MEETING has been scheduled for Thursday October 8, 1959, at the King Edward Hotel, featuring a distinguished lecturer, Thomas C. Hiestand, a consulting geologist from Denver, Colorado. His paper is entitled, A Geologist Discusses Depletion.

### M G S GET-ACQUAINTED DANCE

Saturday, September 19, 1959  
 Victory Room, Heidelberg Hotel  
 8:30 p.m. till . . . B Y O L

Two free tickets will be sent to each member and prospective member.

### DUES ARE DUE

The Treasurer announces that dues for the fiscal year beginning June 1, 1959, are now payable. To renew your membership, either pay \$3.00 to a Society representative who will canvass your building or mail a check to the Mississippi Geological Society, P. O. Box 422, Jackson, Mississippi. For new membership applications, please see Secretary Bill Hollingsworth with Sinclair or any officer of the Society.

### TREASURER'S REPORT

#### Income Statement June, 1959

	Income	Expense
Publications		
Receipts from Sales	\$ 956.86	
Mississippi Sales Tax 1st Quarter, 1959		\$ 15.64
Repayment portion of loan (Principal and Interest)		514.58
Dinner Meeting, April 27, 1959		
Meal Cost (230) plates		688.95
Dinner Dance, May 16, 1959		
Meal		994.55
Decorations and Tickets		7.31
Field Trip, May 7-9, 1959		
Guidebook Printing		750.01
Transportation (Continental Trailways)		478.50
Refreshments		110.44
Contributions & Ticket Sales	351.00	
Miscellaneous (office supplies, etc.)		37.97
	\$1,307.86	\$3,597.95
		\$1,307.86
Excess of Expenditures over Income:		\$2,290.09

#### Income Statement July, 1959

	Income	Expense
Publications		
Receipts from Sales	\$490.91	
Mississippi State Sales Tax 2nd Quarter		\$ 12.78
Repayment of portion of loan		1,005.83
Postage		31.49
Meetings — Winter '58 - '59		
Expenses for Dallmus, Westby, Counselman, MMoffatt and Bornhauser		246.75
Miscellaneous (office, bank charges, etc.)		28.35
Dues — Year 1959-60	24.00	
	\$ 514.91	\$1,325.20
		514.91
Excess of Expenditures over Income:		\$ 810.39

NOTE: Although these statements reflect an excess of current expense over current income, it may be noted that \$1500.00 of principal has been repaid to the Houston Geological Society, there being a current \$1,000.00 balance due on this loan. Our Society has approximately \$800.00 in its commercial account and about \$2,000 deposited with First Federal Savings and Loan Association.

W. D. Lynch  
 Treasurer

### DURING THE SUMMER . . .

THE CALIFORNIA COMPANY moved into new quarters on the Fifth and Sixth Floors of the Petroleum Building. Their Division Production Office at Natchez was transferred to Jackson and is now operating from this new office space. LION also moved "up-town" to the Petroleum Building. John Ashman and company are located on the Fourth Floor.

## NEWS BULLETIN SPONSORS

<b>NEELY BLUE PRINT &amp; SUPPLY CO.</b>	
FL 4-3523	JACKSON, MISS.
<hr/>	
<b>KING EDWARD HOTEL</b>	
FL 2-7741	JACKSON, MISS.
<hr/>	
<b>A. W. WILLIAMS DRILLING CO.</b>	
HEnlock 8-5603 MOBILE, ALA.	FL 3-0541 JACKSON, MISS.
<hr/>	
<b>BAROID WELL LOGGING SERVICE</b>	
EM 6-9470	DAN GOSSAGE JACKSON, MISS.

<b>SCHLUMBERGER WELL SURVEYING CORP.</b>	
FL 2-8589	JACKSON, MISS.
<hr/>	
<b>EDGAR TOBIN AERIAL SURVEYS</b>	
CApitol 3-6203	SAN ANTONIO, TEXAS
<hr/>	
<b>CORE LABORATORIES, INC.</b>	
FL 3-0924	JACKSON, MISS.
<hr/>	
<b>L. L. RIDGWAY CO., INC.</b>	
FL 5-4751	JACKSON, MISS.
<hr/>	
<b>P.G.A.C.</b>	
(PAN GEO ATLAS CORP.)	
FL 2-4337	JACKSON, MISS.

DON FRANKLIN resigned from Continental to take a position with Ashmun and Hilliard. New offices are at 980 Milner Building.

DICK SIMS swelled the ranks of consultants by leaving Texaco. He is working out of his home at 2018 Meadowbrook Road.

There was quite a turnover and increase of personnel affiliated with the oil industry in Jackson. To single out each transfer to and from the capitol city would be a difficult task. Therefore, you are invited to the first meeting and subsequent meetings to renew old acquaintances, as well as to make new ones, and get the transfer news first hand.

### NEW MEMBERS

At a recent Executive Committee meeting, the following men were approved for Active Membership:

James C. Ard, Mobile Oil  
 Donald G. Campbell, Lone Star  
 Howard M. Cotten, Pan American  
 H. Mack Cox, Independent  
 Mark H. Doyte, Mobile Oil  
 Leslie J. Franz, Gulf  
 Dwight A. Free, Jr., Continental  
 William M. Frew, Continental  
 Paul M. Geissler, Pan American  
 Don P. Gipson, Rig Time  
 Daniel E. Herlihy, Mobile Oil  
 Hugh Horn, Independent

Joe R. Langston, Texaco  
 Dee W. Layman, Lion  
 Walter W. McMahan, Jr., Mobile Oil  
 A. L. Morgan, Callery  
 Marvin L. Oxley, Lone Star  
 T. Deane Rodgers, Pan American  
 Warren A. Russell, Pan American  
 William T. Tonkin, Sinclair  
 Robert W. Tyson, Independent  
 William C. Wagner, Pan American

For Associate Membership, the following were approved:  
 Jack A. Brooks, Baroid  
 Jack Daniels, Williams Drilling Co.  
 James G. Vaughan, Gholson

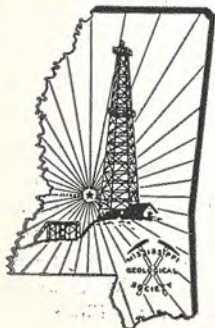
On behalf of the Society, we welcome you into our organization and cordially invite you to attend our various functions. You are urged to assume an active role in the total program of the Society. Make plans now to attend the first meeting!

### SOCIETY PUBLICATIONS

A new official publication and price list of the various Society publications is now available upon request by writing to the:

Publications Chairman  
 Mississippi Geological Society  
 P. O. Box 422  
 Jackson, Mississippi

**NEWS BULLETIN**  
 P. O. Box 422  
 Jackson, Miss.



**Mississippi  
 Geological Society**      NEWS BULLETIN

# NEWS

# BULLETIN

MISSISSIPPI GEOLOGICAL SOCIETY

VOLUME VII

OCTOBER, 1959

NUMBER 2



Standing (l-r): Murray, McGarry, Phillips, Clements — Pan American "Pets"; Ohnutka, Neil, Smith — Pan American "Oilers". Seated (l-r): Visitor scorekeeper, Arnaud — PAO. Kneeling (l-r): Captains Broyles (PAP) and Paul (PAO).

## BOWLING SEASON OFF TO FAST START

Pictured above are the defending 1958-59 Petroleum League Bowling Champions, the Pan American "Pets", who are opening the season against their arch rivals, the Pan American "Oilers". All teams are loaded with newly transferred talent and four new teams have been added as contenders for the 1959-60 Championship.

This year, the MGS sponsored Petroleum League is directed by: Baxter Smith, Sun, President; Ben Watrus, Sinclair, Vice-President; Jerry Anderson, Ohio, Secretary; and Ed Blanton, Sun, Chairman of the Society Bowling Committee. Sixteen teams representing California (2), Cities Service, Continental, Gulf (2) and the Independents meet in competition each Thursday night at the Southern Bowl on Ran-

kin Sreet. The fun is divided into shifts starting at 5:30 and 8:00 p.m. All members and friends are invited to come out and support your favorite team and needle the opposition. P. S. The champs lost their opener.

### SPONSORS

For the coming year this revised News Bulletin is being made possible by the cooperation of the companies that are listed on Page Four. Take note and . . .

SUPPORT OUR SPONSORS

## MISSISSIPPI GEOLOGICAL SOCIETY

(Affiliated with the American Association of Petroleum Geologists  
& Gulf Coast Association of Geological Societies)

### Executive Committee

M. F. Kirby, Gulf—President  
R. V. Ewing, Dixie—Vice President  
W. H. Hollingsworth, Sinclair—Secretary  
W. D. Lynch, California—Treasurer  
D. T. Franklin, Asmun & Hilliard—Program Chairman  
C. E. Brown, Magnolia—Past President

### News Bulletin Staff

R. T. Violette, Pan American—Editor  
C. D. Champlin, Pan American—Assistant Editor

### Correspondents

X. M. Frascogna, Independent  
Ray Frisby, Ohio  
M. K. Kern, Independent  
Dean Miller, Southern States  
J. J. Offenheiser, Shell  
W. E. Taylor, Union  
W. J. Thornton, Texas



## PREPARATIONS FOR G.C.A.G.S. CONVENTION UNDERWAY

The Mississippi Chapter of the Gulf Coast Geological Society will be host to the 10th annual meeting of the Gulf Coast Association of Geological Societies, October 19 through 21, 1960. Ed Blanton, the General Chairman, stated in a recent interview that plans are well under way for the convention, which is to be held in Biloxi. According to Blanton, he expects an even larger attendance than the last time the Society hosted a convention, in 1955, with over 1300 members attending.

Several important committees are already hard at work. Some of their chairmen are:

Gene Davis, Sinclair, Program  
Bob Ross, Tennessee Gas, Editor  
Glenn Clarke, Rig-Time, Recreation  
Charles G. Giffin, Schlumberger, Registration  
Don Franklin, Housing Ashmon and Hilliard

The theme selected for the convention this time, "The Future of Gulf Coast Oil" is a most timely subject and of vital importance.



Pictured above are M. F. Kirby, MGS President, and Al Gilreath, Schlumberger, who presented a very interesting paper entitled *Interpretation of Dip Meter Results in Mississippi*. Over 150 members and guests attended the September 18 meeting.

A great time was had by all who attended the MGS Get Acquainted Dance, September 19, 1959. The dance provided an excellent opportunity to meet new friends and renew old acquaintances.

## AUXILIARY PLANS HARVEST DANCE

The Women's Geological Auxiliary will have a HARVEST DANCE, on November 14, 1959, at 8 p.m. at the Knights of Columbus Lodge. The admission price is \$4.50 per couple, to be paid at the door, but all reservations **MUST** be made by November 12, noon. Dress informally — "shirt sleeves and calico". A lovely buffet will be available (not dinner) and set-ups will be served, but **BYOL!!**

We have tried to contact all the wives of new Geological Society Members, but if your wife has **NOT** been contacted, please have her get in touch with Mrs. Jack Oyler, WGA's Vice-President, and she will see that she is invited to the next meeting. Her address is 5542 Queen Elizabeth Lane, and her phone number is FL 4-2869. We are very anxious to meet all the new ladies who are eligible to be members of the Auxiliary and that they take advantage of the splendid activities we have planned for them this year.

Very Sincerely,  
Mrs. Dudley J. Hughes, President  
Women's Geological Auxiliary

## ANNOUNCEMENT

Mississippi Geological Society Meeting

Date: Monday, October 19, 1959      Place Crown Room  
King Edward Hotel

Time: 5:15 p.m. Cocktail Hour  
6:00 p. m. Dinner

Speakers: Doctor Richard R. Priddy Chairman, Department  
of Geology, Millsaps College  
Wilbur H. Knight, Independent Consulting Geol-  
ogist

Business Meeting to Follow  
Price: \$3.00 per person

For reservations call Bob Ross at FL 2-5054 by 4:30 p.m.,  
Friday, October 16, 1959.

Support the Society — Plan Now to Attend

In the event the presses fail to roll again before that time, there will be a meeting November 2, 1959. At present all MGS meetings will be held in the Crown Room of the King Edward Hotel, beginning at 5:15 p.m. with a Cocktail Hour and followed by the dinner and entertainment.



Doctor Priddy received his B.S. degree from Ohio Northern, his M.S. and Ph.D. from Ohio State University. He has been associated with the Millsaps College for the past thirteen years, and is the Chairman of the Department of Geology there. The following is a brief extract of the paper to be given by Dr. Priddy:

### RECENT STUDENT GEOLOGICAL INVESTIGATIONS IN MISSISSIPPI

Several diversified geological problems have been reported by graduate students and undergraduates in Mississippi Schools. Foxworth (Millsaps-Missouri) identified several heavy mineral suites along Mississippi's coasts and described their movements. Several Ole Miss students devised a simple means of measuring the oxidation and reducing potentials of Gulf Coast sediments by the oxide or sulphide coatings on iron rods thrust into the muds. Mitchell (Southern) and Brooks (S.M.U.) described a Pleistocene ash-cemented sandstone near Pascagoula. Keady (M.S.U.) studied the subsurface Cockfield in water wells of west central Mississippi. Dukes (Mississippi College) thin sectioned petrified woods of Madison, Smith, and Rankin Counties and discovered a wide range in species reflecting Oligocene to Recent climatic changes. Clark (Millsaps-Miss. Highway Dept.) correlated rusting of metal culverts with geological units. Cannon (L.S.U.) and Moore (Millsaps) found that the west tip of Ship Island migrated 3800 feet west and 1100 feet south since 1854. Holladay (Miami of Ohio) and Smith (Sun Oil Co.) studied changes in a sandpit and discovered that the sand moved bodily over a soupy mud bottom, which may explain some massive sand lenses within massive shales.



W. A. Knight received his B.A. and M.A. degree in Geology at the University of Wyoming. He has had diverse experience in all phases of geological exploration, while associated with Union Producing Company, Larco Drilling Company, and as an Independent Consulting Geologist. The following is a brief extract of the paper to be given by Mr. Knight:

### SUGGESTIONS TO THE EXPERT WITNESS

The good expert witness must know as much as, if not more, than anyone else about the subject matter. An even temper, pleasant manner, and loud and clear delivery are basic attributes of a good expert witness. Many helpful suggestions regarding direct testimony and cross-examination are offered. The procedure of the Mississippi Oil and Gas Board is discussed with special reference toward giving technical geological evidence in a manner which can be clearly understood by the non-technical members of the Board.

## MISSISSIPPI GEOLOGICAL SOCIETY PUBLICATIONS

A price list of MGS Publications is presented for those who wish to know what publications are available.

**Subsurface Sections of Central Mississippi, Chiefly Cretaceous.** March, 1941, 66 pp. 1 index map, 10 cross sections, 8½" x 14". Out of Print.

**Second Field Trip Guidebook**

**Jackson to Recent of Central Mississippi.** February, 1940, 9 pp. 3 illustrations, 9" x 11½". Out of Print.

**Third Field Trip Guidebook**

**Cretaceous of West-Central Alabama and Northeastern Mississippi.** May, 1940, 30 pp. 4 illustrations, 9" x 11½". Out of Print.

**Fourth Field Trip Guidebook**

**Northwest Alabama Paleozoics.** December, 1940, 26 pp. 4 illustrations, 9" x 11½". Out of Print.

**Fifth Field Trip Guidebook**

**Eutaw-Tuscaloosa of Western Alabama.** December, 1945, 31 pp. illustrations, 9" x 11". Out of Print.

**Sixth Field Trip Guidebook**

**Upper Eocene, Oligocene, and Lower Miocene of Central Mississippi.** June, 1948, 74 pp. 27 illustrations, 8½" x 11". Price: \$5.00 plus postage; To students: \$2.00 plus postage.

**Seventh Field Trip Guidebook**

**Pre-Cambrian and Paleozoic Rocks of Northern Alabama and South-Central Tennessee.** August, 1949, 89 pp. 30 illustrations, 8½" x 11". Price: \$4.00 plus postage; To students \$2.00 plus postage.

**Eighth Field Trip Guidebook**

**Cretaceous of Mississippi and South Tennessee.** October, 1950, 55 pp. 6 illustrations, 8½" x 11". Out of Print.

**Ninth Field Trip Guidebook**

**Claiborne of Western Alabama and Eastern Mississippi.** September, 1952, 94 pp. 14 illustrations, 8½" x 11". Price: \$4.50 plus postage; To students: \$2.00 plus postage.

**Tenth Field Trip Guidebook**

**Wilcox and Midway Groups, West-Central Alabama.** September, 1953, 60 pp. 22 illustrations, 8½" x 11". Price \$4.00 plus postage. To students: \$2.00 plus postage. Out of Print.

**Supplementary Road Log to 10th Field Trip Guidebook - Price \$5.00.**

**Eleventh Field Trip Guidebook**

**Paleozoic Rocks, Central Tennessee and Northwest Alabama.** May, 1954, 67 pp. 28 illustrations, 8½" x 11". Price: \$4.00 plus postage; To students: \$2.00 plus postage.

**Road Log Covering Outcrops of Vicksburg, Jackson, Claiborne, and Wilcox Groups of Central Mississippi.** Field Trip April 6-7, 1956. Price \$1.00.

**Wilcox Oil Fields, Southern Mississippi and Adjacent Areas.** July, 1952, 164 pp. 61 illustrations, composite electric log (Scale 1" - 100'), showing Wilcox section presently productive, 9" x 11". Price \$5.00 plus postage. To students: \$2.00 plus postage.

**Mesozoic-Paleozoic Areas of Mississippi and Alabama.** 154 pp. 57 maps of the individual oil and gas fields, 2 composite, columnar sections showing something of the stratigraphy and lithology, 1' x 11 1-4" x 8 3-4", hard covers. Price: \$12.50 plus 16c postage. Published October, 1957.

**General Geology of Mississippi** by Tom McGlothlin, May, 1943, reprinted in March, 1955, 62 pp. 16 illustrations, 7" x 9½". Price \$5.00 postpaid.

**Wilcox Composite Electric Log, July, 1952, Scale 2" - 100'.** Price \$5.00 pp. **Mesozoic Composite Log of South Mississippi and South Alabama,** October, 1957. Price: \$1.00 postpaid.

**Paleozoic Composite Log of Black Warrior Basin, Mississippi and Alabama.** Price: \$1.00 postpaid.

**Geological Map of Mississippi, 1945, Scale: 1 - 500,000 - 36" x 47".** Price \$3.25 postpaid.

**Cretaceous Correlation Chart of Mississippi,** February, 1946, 26" x 18". Price: \$9.00 postpaid.

**Tertiary Correlation Chart of Mississippi,** March 1945, 23" x 21½". Price: \$9.00 postpaid.

**Paleozoic Cross Section from South-Central Tennessee to Central Mississippi,** March, 1949, Scale: 1" - 300' (vertical), 60½" x 42". Price: \$3.00 postage paid.

**Mesozoic Cross section from Concordia Parish, Louisiana, to Walton County, Florida,** October, 1949, Scale 1" - 200' (vertical) 83½" x 42". Price: \$2.25 postpaid.

**Black Warrior Basin Pre-Chester Correlation Sections, 1954, (1) West-east section from Independence County, Arkansas, to Walker County, Alabama; (2) North-south section from Giles County, Tennessee, to Monroe County, Mississippi. Scale: 1" - 400' (vertical), 32" x 20". Price: \$4.25 per set, postpaid. No broken sets sold.**

**Black Warrior Basin Chester Correlation Sections, April, 1953 (1) Strike section - Lafayette County, Mississippi, to Lauderdale County, Alabama; (2) Dip section - Clay County, Mississippi, to Lauderdale County, Alabama; (3) Muldon Field and vicinity. Scale 1" - 400' (vertical), 31" x 20". Price: \$3.00 per set, postpaid. No broken sets sold.**

If you desire to purchase publication, you may do so from:

Publications Chairman  
Mississippi Geological Society  
P. O. Box 422  
Jackson, Mississippi

### NEW FIELD DISCOVERIES

Discoveries as announced by the Nomenclature Committee are as follows:

Field Name (Formation)	Discovery Date	Discovery Well
Grange (Mooringsport)	May 17, 1959	Pan American Petroleum Corp. No. 1 Holloway, Sec. 24-T8N-R2W, Jeff Davis County, Miss.
McComb (Lower Tuscaloosa)	August 10, 1959	J. Willis Hughes & Sun Oil Co. No. 1 Pope Sec. 10-T3N-R7E, Pike County, Miss.
Southeast Fairview (Wilcox)	August 17, 1959	D. A. Biglane, S. B. Laub, and Eagle Drig. & Development Co. No. 1 Nor- man-Breaux Sec. 12-T4N-R4W, Adams County, Miss.

NEWS BULLETIN SPONSORS

**NEELY BLUE PRINT & SUPPLY CO.**  
 FL 4-3523 JACKSON, MISS.

---

**KING EDWARD HOTEL**  
 FL 2-7741 JACKSON, MISS.

---

**A. W. WILLIAMS DRILLING CO.**  
 HEmlock 8-5603 FL 3-0541  
 MOBILE, ALA. JACKSON, MISS.

---

**BAROID WELL LOGGING SERVICE**  
 EM 6-9470 DAN GOSSAGE JACKSON, MISS.

---

**HOTEL HEIDELBERG**  
 FL 2-6571 JACKSON, MISS.

**SCHLUMBERGER WELL SURVEYING CORP.**  
 FL 2-8589 JACKSON, MISS.

---

**EDGAR TOBIN AERIAL SURVEYS**  
 CApitol 3-6203 SAN ANTONIO, TEXAS

---

**CORE LABORATORIES, INC.**  
 FL 3-0924 JACKSON, MISS.

---

**L. L. RIDGWAY CO., INC.**  
 FL 5-4751 JACKSON, MISS.

---

**P. G. A. C.**  
 (PAN GEO ATLAS CORP.) JACKSON, MISS.

**The "GUSHER"**

Recent transfers by the California Co. are Emmett Herbst and Dick Snyder from New Orleans to Jackson, and Russ Alexander of Jackson to the far north country, Bismark, N. Dakota . . . W. J. Thorton of the Texas Co. leaves soon for New Orleans . . . Magnolia announces the transfer of John Marshall to the Oklahoma City office, and welcomes Walter McMahon of Houston to Jackson . . . Over at Shell, new arrivals are Ellwood Harris and Harvey Webb from Shreveport, Stewart Welch from Houston, and Dick Graff from Baton Rouge; and temporarily transferred to Miami is Robert Middendorf . . . From Corpus Christi, the Lion Oil Co. welcomes Dee Witt Layman . . . C. R. Scurlock, of Gulf, has been transferred to Evansville, Ind., as Exploration manager. . . Marvin Oxley and Gene Campbell, both with Lone Star, have been transferred from Shreveport to the Jackson office . . . Among the several new tenants in the Petroleum Building are Consolidated American Petroleum Corp., Halliburton Oil Well Cementing Co., Lane Wells Co., and the exploration department of Shell Oil Co. R. T. Violette, Pan American, will be in Tulsa the next few weeks . . . while the News Bulletin Editor is away . . . the copy boys will play . . . We are all interested in new arrivals, transfers, and promotions . . . If you know of news items, send a smoke signal to one of the staff or call Don Champ- lin at FL 4-5703.

**NEW MEMBERS MISSISSIPPI GEOLOGICAL SOCIETY**

At a recent Executive Committee meeting, the following men were approved for Active and Associate membership:

**NEWS BULLETIN**  
 P. O. Box 422  
 Jackson, Miss.



**Mississippi  
 Geological Society NEWS BULLETIN**

**ACTIVE MEMBERS**

- W. A. Albright, The California Co.
- Thomas S. Blackwell, Gulf Oil Corp.
- Charles R. Brammell, Sinclair Oil & Gas Co.
- Bahngrell W. Brown, Mississippi Southern College
- Robert M. Campbell, The California Co.
- William A. Chandler, The California Co.
- Thomas H. Clements, Jr., Pan American Petroleum Corp.
- James I. Dodson, Gulf Oil Corp.
- D. W. Folger, The California Co.
- William E. Gardner, The California Co.
- R. C. Howard, Gulf Oil Corp.
- R. L. Jackson, The California Co.
- John S. Lancaster, The California Co.
- C. H. Lautier, The California Co.
- Thomas V. McEvelly, The California Co.
- Jack E. Oslin Texaco Inc.
- C. H. Ramsden, The California Co.
- Carl C. Reker, The California Co.
- Eric W. Talmage, Sinclair Oil & Gas Co.
- George B. Vockroth, The California Co.
- James Edwin Wray, The California Co.
- Robert S. Zirkle, The California Co.

**ASSOCIATE MEMBERS**

- James F. Blair, Pan Geo Atlas Corp.
- Edwin F. Fari, Jr., Pan American Petroleum Corp.
- R. H. Tullos, Jr., The California Co.
- Lon B. Turk, Independent Petr. Geologist & Engineer



Mr. R. T. Violette  
 Pan American Petr. Corp.  
 Box 689  
 Jackson, Miss.



*Prose Putts*

# NEWS

# BULLETIN

MISSISSIPPI GEOLOGICAL SOCIETY

VOLUME VII

NOVEMBER, 1959

NUMBER 2

## REPORT FROM THE PRESIDENT

## 3RD ANNUAL MGS GOLF TOURNAMENT

I would like to take this opportunity to congratulate the numerous members of the Society connected with the publishing of "Mesozoic-Paleozoic Producing Areas of Mississippi and Alabama." They did an excellent job. I would also like to thank the large number of members who have aided in the sales of the Volume. It has been through the concerted efforts of these groups that this publication has been a success and we were able to write the following letter:

The Third Annual Mississippi Geological Society Golf Tournament will get under way at the Jackson Country Club on Friday, October 30, 1959. A recent interview with Ed Launius, the Chairman of the Tourney, indicated that plans are well under way for a first class affair. Preliminary plans and the time for some of these events are as follows:

Mr. Edd R. Turner, President  
Houston Geological Society  
234 Esperson Building  
Houston, Texas

Golf Tournament to begin at ----12:30 p.m.  
Social Hour ----- 6:30 p.m.  
Presentation of Awards ----- 7:30 p.m.  
Dancing ----- 8:30 p.m. - 'til

Dear Mr. Turner:

Some of the awards to be presented include the beautiful R. L. Ridgeway trophy, the awards for low net score and low gross score, prizes for a hole-in-one, longest drive, least number of putts, and low foursome score. The winner of the traveling Ridgeway Trophy last year was Jerry Anderson, Ohio, with a low net score of 66. Winner of the low gross score was Henry McLurg, Independent, with a score of 74. Some of the other winners were as follows:

Enclosed herewith is a check in the amount of \$1,008.75, covering the balance of the principal amount of our promissory note held by your Society, and interest at 3½ per cent for the three months period since our last payment.

Hole-in-one ----- Cotton Gilbert  
Least Putts ----- Bill Durr  
Longest Drive ----- Ed Launius

It is requested that the Houston Geological Society return the promissory note and inform the First Federal Savings and Loan Association of Jackson that the note has been paid and that it will be satisfactory to release the Mississippi Geological Society's escrowed deposit.

After speaking with a few of the old Pros, we were told that some outstanding contenders this year would be Henry McLurg, Independent; Wesley Odgen, Shell; Charlie Barton, Gulf Coast; Gene Davis, Sinclair; Rip Baker, Sun.

On behalf of the members of the Mississippi Geological Society, I wish to convey to you our sincere thanks for aiding us in publishing our volume "Mesozoic-Paleozoic Producing Areas of Mississippi and Alabama." Through your aid, we were able to maintain the book quality and format which we felt were desirable for permanency and usefulness. Our ability to repay this note four months before the final due date is evidence of the unanticipated excellent reception received by this reference volume.

At the time the Bulletin went to press, final plans were not flanged up, so some changes may be made. Entry blanks and full information will be mailed to all members. If you have not done so, plan to enter the Tourney now.

We hope that this Society may have the opportunity to extend similar courtesy and assistance to Houston some day.

**SPONSORS** *Large Type*  
For the coming year this News Bulletin is being made possible by the cooperation of the companies that are listed on Page Four. Take note and . . .  
**SUPPORT OUR SPONSORS**

Sincerely,  
M. F. Kirby

SEE PAGE 3 FOR NOVEMBER ANNOUNCEMENTS

*February*

*Large Type*

*cont. Page 2*

## MISSISSIPPI GEOLOGICAL SOCIETY

(Affiliated with the American Association of Petroleum Geologists  
& Gulf Coast Association of Geological Societies)

### EXECUTIVE COMMITTEE

M. F. Kirby, Gulf—President  
R. V. Ewing, Dixie—Vice President  
W. H. Hollingsworth, Sinclair—Secretary  
W. D. Lynch, California—Treasurer  
D. T. Franklin, Ashmun & Hilliard—Program Chairman  
C. E. Brown, Magnolia—Past President

### News Bulletin Staff

R. T. Violette, Pan American—Editor  
C. D. Champlin, Pan American—Assistant Editor

### Correspondents

X. M. Frascogna, Independent  
Ray Frisby, Ohio  
M. K. Kern, Independent  
Dean Miller, Southern States  
J. J. Offenheiser, Shell  
W. E. Taylor, Union

## JACKSON GEOPHYSICAL SOCIETY

The Jackson Geophysical Society is a relatively young organization. It was chartered in 1955 as the Jackson Section of the Society of Exploration Geophysicists with the object of advancing the science of geophysics and promoting fellowship and co-operation among those persons interested in geophysical and geological problems. Its membership is open to any person interested in geophysics.

Since its modest beginning four years ago, the JGS has enjoyed a very rewarding demonstration of interest and participation by exploration people in the Jackson area. There are currently some 97 paid members listed in the JGS. Nearly half of these are also members of the Mississippi Geological Society.

The Executive Committee of the JGS for the 1959-60 season consists of:

Joel E. MacGregor	President The California Company
John J. Babb	Vice President Delta-Western Exploration Company
Tom H. T	Secretary-Treasurer Sun Oil Company
District Representative to the SEG	Phil P. Gaby Consultant
Past President	Ralph C. Cole Shell Oil Company

The Jackson Geophysical Society recently acquired increased national stature when one of its past presidents, Phil Gaby, was elected Secretary-Treasurer of the SEG.

The JGS normally meets on the third or fourth Monday of each month from September through April, but excluding the month of December. These monthly sessions are all dinner meetings preceded by a fellowship hour at which refreshments are served. Outstanding geophysicists and experts in related fields have spoken at these meetings on a variety of subjects.

The next meeting of the JGS will be on the evening of October 26, and will be addressed by Mr. Robert R. Miller of DuPont. Mr. Miller will discuss the use of column charges and delay units to improve the results of seismic surveys in difficult shooting areas such as typified by much of South Mississippi. Members of the Mississippi Geological Society are cordially invited to attend this meeting. Those on the JGS mailing list will receive written notice of the meeting about a week beforehand. Those who would like to attend but are not on the mailing list can get the details and make reservations by calling Tom Tillman at FL 3-4727.

J. E. MacGregor

## COMMITTEE REPORTS

### PRESERVATION OF CORES AND SAMPLES

C. D. Smith, Chairman

Sample storage and examination facilities are to be built in Jackson by the Mississippi Geological Survey.

The State Building Commission has designated a tract of land located immediately north of the Blind Industries Building on the west side of North West Street for the construction of a Sample Storage Building. The building will be 100' by 40' and will consist of an office, sample processing room and sample examination room, in addition to sample storage facilities.

The State has appropriated \$20,000 in addition to the land for this project. The estimated cost of the initial building is \$40,000. Contributions amounting to \$17,000 have been made by the following companies:

Atlantic Refining Co.  
Carter Oil Co.  
Gulf Oil Corp.  
Humble Oil & Refining Co.  
Jett Drilling Co.  
Larco Drilling Co.  
Lion Oil Co.  
Magnolia Petroleum Co.  
Ohio Oil Co.  
Olin Oil & Gas Co.  
Pan American Petroleum Co.  
Shell Oil Co.  
Southern Natural Gas Co.  
Union Producing Co.

Additional funds are needed and as can be seen by the above list of contributors, the participation by companies in this worthwhile endeavor is not 100 per cent.

### BOY SCOUT COMMITTEE

A. F. Whatley, Chairman

The purpose of the Boy Scout Committee is to provide a program to help local scouts meet the requirements for the Geology Merit Badge. These requirements call for a field trip to collect rocks and fossils, and four or five lecture sessions on basic geology and mapping.

From all indications there are quite a few scouts interested in taking advantage of this program and if we are to provide adequate leadership, five or six members are needed for this committee. Anyone who is able to work on the committee should call Arthur Whatley with Gulf at FL 4-5221.

This is a worthwhile project and since the Society will also benefit from it, we should do our best to make it a good one.

## ANNOUNCEMENTS

November Meetings of the Mississippi Geological Society

Date: **Monday, November 2** Place: Crown Room  
King Edward Hotel

Time: 5:15 p.m. Cocktail Hour

6:00 p.m. Dinner

Speakers: Lewis G. Weeks, President, American Association of Petroleum Geologists  
Joe W. Lang, District Geologist, U.S.G. Ground Water Division

### BUSINESS MEETING TO FOLLOW

Price \$3.00 per person

For reservations, call Bob Ross at Fleetwood 2-5054 by 4:30 p.m., Friday, September 29, 1959.

Meeting: **Monday, November 23** Place: Crown Room  
King Edward Hotel

Time: 5:15 p.m. Cocktail Hour

6:00 p.m. Dinner

Speakers: F. B. St. John, Carter  
W. D. Lynch, California

These gentlemen are the Program Co-Chairmen for this meeting, the Topics they are to speak on will be announced later.

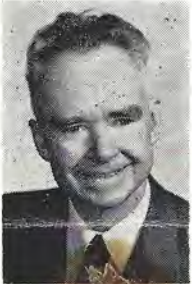
### BUSINESS MEETING TO FOLLOW

Price \$3.00 per person.

For reservations, call Bob Ross at Fleetwood 2-5054 by 4:30 p.m., Friday, November 20, 1959.

SUPPORT THE SOCIETY — PLAN NOW TO ATTEND.

Mr. J. W. Lang, District Geologist, with the U.S.G.S. Ground Water Division, will present his paper "Influence of the Jackson Dome on Sedimentary Facies and the Effect on Water-Bearing Properties of the Claiborne Group" to the Mississippi Geological Society November 2, and G.C.A.G.S. Convention later that month. Mr. Lang has been associated with U.S.G.S. for the past 19 years. He has worked on the evaluation of the ground water resources in the Gulf Coast States, West Texas, and New Mexico, and he has also spent one year in Iran as a Technical Advisor.



Mr. Lewis G. Weeks, who will make an official visit to the Mississippi Geological Society on November 2, will also present his paper entitled "The Habitat of Oil." Until his retirement in 1958 from Standard Oil Company of New Jersey, Mr. Weeks was serving as Chief Geologist in this capacity, his work and responsibility covered the petroleum provinces of the entire world.

Unfortunately, there was no picture available of Mr. Weeks at this time.

### HARVEST DANCE DATE CHANGED

Due to the Geological Convention in Houston, the AUXILIARY'S HARVEST DANCE has been changed to NOVEMBER 21st, at 8 p.m. Remember men, it's to be very informal. NO TIES — Come in comfort & BYOL!

THE WOMEN'S GEOLOGICAL AUXILIARY wishes to extend a very warm welcome to all the Geologists who have recently moved to Jackson. We know that your liking Jackson will depend, to a large extent, on the happiness and contentment of your wives, so we urge you to encourage them to become members of the AUXILIARY. We have a splendid program planned for each month of the year to supply entertainment for them as well as an excellent opportunity for them to meet new friends and develop new interests in their new home town. WE like it here! We hope YOU will too!!

The WOMEN'S GEOLOGICAL AUXILIARY invites the wives of all Associate Members of the GEOLOGICAL SOCIETY to become members of the WGA. If you are interested in the AUXILIARY, contact our Treasurer, Jane Ashman, EM 6-9550.

Mrs. Dudley J. Hughes,  
Pres. WGA

### TREASURER'S REPORT — SEPTEMBER, 1959

#### Income Statement

	Income	Expense
Publications		
Receipts from Sales	\$ 401.14	
Cost of Sales		\$ 27.43
Dinner Meeting (September 21)		
Meals Paid by Members	364.00	
Cost of Refreshments		122.25
(Cost of Meal in Accts. Payable — \$429.46)		
(Refreshment Contribution in Accts. Rec. — \$148.85)		
Newsletter		
Advertising Receipts	90.00	
Mailing & Printing Expense (cost \$30 for permanent addressograph plates)		100.86
Administration		
Dues Received	406.00	
Stationery		55.27
Total Cost of Dance (September 19)		174.24
Miscellaneous		31.83
	\$1261.14	\$511.88
Excess of Income over Expenditures		\$749.26
	W. D. LYNCH 10-12-59	

### NEW MEMBERS

At a recent Executive Committee meeting, the following men were approved for active membership:

James L. Cummings, Jr., Kinsey & Kinsey  
Harry O. Snouffer, Jr., Skelly Oil Company  
Arthur H. Trowbridge, Olin Oil & Gas Corporation  
James R. Stripling, Cities Service Oil Company  
Marvin C. Rushing, Humble Oil & Refining Company  
N. B. Venus, Tennessee Gas and Oil Company  
B. B. Burroughs, Sunray Mid-Continent Oil Company  
Harry C. Victory, Tennessee Gas and Oil Company  
Marvin E. Doss, The Carter Oil Company  
Charles F. Piles, The Carter Oil Company  
Paul A. Bollheimer, The Carter Oil Company  
James M. Watson, The Carter Oil Company  
Billy G. Phillips, The Carter Oil Company  
Edwin E. Luper, Henry N. Toler  
Julius M. Ridgway, Ridgway Management, Inc.  
Richard E. Snyder, The California Company  
Max Levin, Ashmun & Hilliard  
William W. Kerr, The California Company  
Emmett Z. Herbst, The California Company  
Weldon W. Saylor, The California Company  
D. E. Bowers, Schlumberger Well Surveying Corp.  
H. H. Ham, Schlumberger Well Surveying Corp.  
Stratton H. Bull, Murphy Corporation  
George W. Keys, Shell Oil Company  
John M. McLain, Shell Oil Company  
Forrest W. Pace, The Carter Oil Company  
R. L. Walz, Shell Oil Company  
J. H. Williams, Shell Oil Company  
John W. Williams, Jr., Arkansas Fuel Oil Corporation  
W. Williams, Jr., Shell Oil Company

NEWS BULLETIN SPONSORS

**NEELY BLUE PRINT & SUPPLY CO.**  
 FL 4-3523 JACKSON, MISS.

---

**KING EDWARD HOTEL**  
 FL 2-7741 JACKSON, MISS.

---

**A. W. WILLIAMS DRILLING CO.**  
 HEmlock 8-5603 MOBILE, ALA. FL 3-0541 JACKSON, MISS.

---

**BARDOID WELL LOGGING SERVICE**  
 EM 6-9470 DAN GOSSAGE JACKSON, MISS.

---

**HOTEL HEIDELBERG**  
 FL 2-6571 JACKSON, MISS.

---

**SUPPORT THE SOCIETY**  
 ATTEND THE MEETINGS

**SCHLUMBERGER WELL SURVEYING CORP.**  
 L 2-8589 JACKSON, MISS.

---

**EDGAR TOBIN AERIAL SURVEYS**  
 CApitol 3-6203 SAN ANTONIO, TEXAS

---

**CORE LABORATORIES, INC.**  
 FL 3-0924 JACKSON, MISS.

---

**L. L. RIDGWAY CO., INC.**  
 L 5-4751 JACKSON, MISS.

---

**P. G. A. C.**  
 FL 2-4337 JACKSON, MISS.

---

Insist on the bag with the Golden Tag  
**HUBCO SAND SAMPLE BAGS**  
 Write for free sample  
 HUTCHINSON BAG CORP., HUTCHINSON, KANSAS

*Thoscher-*

**THE "GUSHER"**

Pardon our slip, due to errors beyond our control we omitted several teams in the Petroleum Bowling League article of last issue. In addition to those teams previously listed, teams representing Sun, United Gas, Ohio, Texaco, Tennessee Gas, Sinclair, and Pan American (2) are contenders for the League Championship . . . along that same line as of October 15, the Gulf Prides were leading, followed in a close second by Sun . . . **Charles A. Barton** formerly with Skelly has moved to Gulf Coast Drilling Company as its Geologist . . . Tennessee Gas is moving up — from the 7th to the 9th floor in the Milner Building. A new face at Carter is **Marvin E. Doss**, a recent transfer from Durango. Also at Carter, **Mr. and Mrs. Mark Chandler** have a new daughter, **Jann. Brenda** is a new arrival at the **Howard Cotton** household — Pan America . . . The **Rex Hewitts** welcomed a fourth son to their family. **Ed Launius**, Independent, has moved into a new office in the Deposit Guaranty Bank Building. If you have news for the Bulletin, call Don Champlin, FL 4-5703.

**FUTURE MEETINGS OF SPECIAL INTEREST**

Notice of Future Conventions of the G.C.A.G.S and other Societies.

	1959	1960	1961
S. E. G. (Annual)	Nov. 9-12 Los Angeles	Nov. 7-10 Galveston	Nov. 5-9 Denver
	Nov. 2-4 Pittsburgh	Nov. 10-12 Denver	Nov. 2-4 Cincinnati
G. C. A. G. S. (Annual)	Nov. 11-13 Houston	Oct. 19-21 Biloxi	Oct. 25-27 San Antonio
Pacific Section, A. A. P. G. (Annual)	Nov. 12-13 Los Angeles		
Mid-Continent Regional Meeting, A. A. P. G. (By-Annual)	Oct. 28-30		
Southwestern Federation of Geological Societies (Annual ?)			
Petrol. Engr., A. I. M. E. (Annual)		Oct. 2-5 Denver	Oct. 8-11 Dallas
Rocky Mt. Section A. A. P. G. (Annual)		Feb. 8-10 Billings	Apr. 24-27 Denver
A. A. P. G. - S. E. P. M. (Annual)		Apr. 25-28 Atlantic City	Apr. 24-27 Denver
A. P. I. (Annual)	Nov. 9-11 Chicago	Nov. 14-16 Chicago	

**NEWS BULLETIN**

P. O. Box 422  
 Jackson, Miss.



Mr. R. T. Violette  
 Pan American Petr. Corp.  
 Box 689  
 Jackson, Miss.

**Mississippi Geological Society NEWS BULLETIN**



# News

# BULLETIN

MISSISSIPPI GEOLOGICAL SOCIETY

VOLUME VII

JANUARY, 1960

NUMBER 4

## GOLF TOURNAMENT — THE BEST YET?

The third Annual Mississippi Geological Society Golf Tournament was held Friday, October 30, 1959, at the Jackson Country Club. It is believed that the well attended affair, consisting of an afternoon of golf and a gala evening social hour, buffet dinner, and dancing, was one of the better Society social events in recent years . . . if not the best yet! Ed Launius, General Chairman of the Tourney, is to be commended for his efforts in planning and staging this first class function.



Pictured above is Ed Launius (right) presenting one of the trophies to Charles Barton (left), the winner of the first low net score. The other trophy for the first low gross score was won by Buddy Cleveland. Other winners included:

- 2nd Low Gross ----- George Young
- 2nd Low Net ----- Gene Ruffin
- Longest Drive ----- H. C. Victory
- Hole-In-One ----- Leroy Gordon
- Low Putts ----- Gene Davis
- Low Ball Foursome ----- Stubby Allen, Rip Baker, Bill Mounger, Rod Jeffreys
- Most 4's ----- Ron Ohnoutka, Rodney Jefferys
- Most 5's ----- Verne Culbertson
- Most 6's ----- L. J. Franz
- High Gross ----- Russ Meyer

(Continued on Page 2)

## REPORT FROM THE PRESIDENT

TO THE MEMBERS OF THE MISSISSIPPI GEOLOGICAL SOCIETY:

The Program Committee has completed the program for the rest of the year. These are the dates that have been reserved. There will probably be a slight amount of adjusting in the program chairmen and speakers:

- January 20:
  - Roger M. Matson, "How to Organize a Stratigraphic Trap Search Program"
  - Gene Taylor, Union Producing Co., "Sunnyside Field"
- February 8:
  - Fordyce St. John; Jack DeMaret, "Field Wide Unitization"
  - B. B. Spaulding; Warren E. Grabau — Subject not available.
- February 22:
  - J. F. Borthwick, Jr., "Function of the Mississippi State Oil and Gas Board"
- March 2:
  - Thomas H. Philpott, Vice President, Exploration, Olin Oil & Gas Corp., New Orleans, La., "Recent Developments in the Lower Cretaceous Trend of Mississippi."
- March 21:
  - Tom Fitzgerald; Speaker and subject are awaiting company clearance.
  - Emil Monsour; Dudley Hughes, "Characteristics of Deep-Seated Salt Dome Faulting" (Tentative title).
- April 5:
  - Robert M. Hearin, President, First National Bank, "Financing in the Oil Industry."
- April 19:
  - George White; Tracy Lusk, State Geologist, "Mineral Deposits for State of Mississippi Other Than Oil and Gas" (Tentative title).
  - L. R. McFarland, Speaker and subject not definitely committed at present.
- May 2:
  - Bill Skees; John Grower, "Legal Aspects of the Oil Business."
  - Phil Eisenstatt; E. G. Werren; "Little Creek Field."

A second meeting for May will be scheduled at a later date for the election of officers for the coming year.

(Continued on Page 2)

## SPONSORS

For the coming year this News Bulletin is being made possible by the cooperation of the companies that are listed on Page Four. Take note and . . .

SUPPORT OUR SPONSORS

SEE PAGE 3 FOR FEBRUARY ANNOUNCEMENTS

## MISSISSIPPI GEOLOGICAL SOCIETY

(Affiliated with the American Association of Petroleum Geologists  
& Gulf Coast Association of Geological Societies)

### EXECUTIVE COMMITTEE

M. F. Kirby, Gulf—President  
R. V. Ewing, Dixie—Vice President  
W. H. Hollingsworth, Sinclair—Secretary  
W. D. Lynch, California—Treasurer  
D. T. Franklin, Ashmun & Hilliard—Program Chairman  
C. E. Brown, Magnolia—Past President

### News Bulletin Staff

R. T. Violette, Pan American—Editor  
C. D. Champlin, Pan American—Assistant Editor

### Correspondents

X. M. Frascogna, Independent  
Ray Frisby, Ohio  
M. K. Kern, Independent  
Dean Miller, Southern States  
J. J. Offenheiser, Shell  
W. E. Taylor, Union

## Tournament —

(Continued from Page 1)

### THE CANDID CAMERA —



### A GOOD TIME WAS HAD BY ALL!

Last, but by far being least, is the recognition of our co-sponsoring firms whose assistance made the Tournament a reality. Much appreciation goes to BARIOD, ENGINEERING SERVICE, HYCALOG, HYCATECTOR, JETT DRILLING CO., LAMPTON OIL CO., LYLE CASHION CO., MARSHALL R. YOUNG DRILLING CO., NEELY'S, PGAC, PETERSON DRILLING CO., RIDGWAY'S, SCHLUMBERGER, EXPLORATION SURVEYS, ZACK BROOKS DRILLING CO., AND LARCO DRILLING CO.

### THANKS... D. C.

The Editor wishes to use this space to single out and thank Don Champlin, Pan American, for the excellent job he did in taking over and publishing the **News Bulletin**, on such short notice, while your editor was away from Jackson this past fall. Several problems arose, but D. C. managed to get the bulletin out on time.

Bob Violette  
Editor

## Report . . .

(Continued from Page 1)

The Executive Committee for the G.C.A.G.S. met in Houston on December 11th and the following business transpired:

Future convention dates were established as follows:

Biloxi, Mississippi	Oct. 19-21, 1960
San Antonio, Texas	Oct. 25-27, 1961
New Orleans, Louisiana	Oct. 31-Nov. 3, 1962
Hot Springs, Arkansas	Nov. 6-9, 1963 (Tentative)
(Shreveport & Tyler acting as co-hosts)	
Corpus Christi, Texas	1964
Houston, Texas	1965
Jackson, Mississippi	1966

The Treasurer's Report stated that the 1959 Convention in Houston received in cash \$30,978.60 and encountered \$34,347.83 expenses, resulting in a deficit of \$3,369.23. Houston is confident the post-convention sales of publications (Transactions and Field Trip Guide Books) will enable them to eventually show a profit. G.C.A.G.S. presently has \$5,670.74 cash on hand plus approximately \$7,000.00 in bonds.

S.E.P.M. has made a request for a grant to underwrite the expense of cataloguing the original type localities and describing new "Types" where the need be. It was stated that many of the type localities have been obliterated. The need is for re-description of original "Types" and designation of alternate type localities. This is to be discussed further at the next executive session.

The following officers were elected for the coming year:

Vice President — Dodd N. Osburn, New Orleans, La.  
Secretary — W. W. Woolfolk, San Antonio, Texas  
Treasurer — E. G. Jeffreys, Jackson, Mississippi

and I was elected to the Presidency, an honor which I hold in great esteem. I hope that I am worthy of the honor.

I asked for and was granted full authority of the Mississippi Geological Society to plan and stage the 1960 Convention in Biloxi, Mississippi.

Sincerely,  
M. F. Kirby

## 1959 G.C.A.G.S. CONVENTION



Back Row: (left to right) Ken Harlan, Jan Kaker, Ed Blanton; Middle Row: (left to right) Norma Harlan, Chuck Giffin, Rip Baker; Front Row: (left to right) Mary Guy Blanton, Jody Giffin, June Ringenberg, Les Ringenberg.

Pictured above is a portion of the Jackson delegation attending and enjoying the 1959 edition of the annual Gulf Coast Association of Geological Societies Convention in Houston, Texas. The highly successful Convention was held November 11-13, 1959, at the Shamrock Hotel with approximately fourteen hundred in total attendance.

Under the guidance of this year's theme, "Structure and Its Relation to Sedimentation," a number of interesting papers were presented at the various technical sessions. MGS's contribution was through Mr. J. W. Lang, District Geologist, USGS Ground Water Division, who presented his paper, "Influence of the Jackson Dome on Sedimentary Facies and the Effect on Water-Bearing Properties of the Claiborne Group."

## ANNOUNCEMENTS

February Meetings of the Mississippi Geological Society

Date: Monday, February 8 Place: Crown Room  
King Edward Hotel

Time: 5:15 pm Cocktail Hour  
6:00 pm Dinner

Technical Paper: "Field of Wide Unitization"  
Jack DeMaret

Warren E. Grabau  
(Subject not available)

Price: \$3.00 per person

For reservations, call Bob Ross at FLeetwood 2-5054 by  
4:30 pm, Friday, February 5, 1960.

—o—

Date: Monday, February 22 Place: Crown Room  
King Edward Hotel

Time: 5:15 pm Cocktail Hour  
6:00 pm Dinner

Technical Papers: "Function of the Mississippi State Oil  
and Gas Board"

J. F. Borthwick, Jr.

Price: \$3.00 per person

For reservations, call Bob Ross at FLeetwood 2-5054 by  
4:30 pm, Friday, February 19, 1960.

SUPPORT THE SOCIETY — PLAN NOW TO ATTEND

—o—

## MISSISSIPPI GEM AND MINERAL SOCIETY

A little over two years ago, Prof. Wendell B. Johnson, Department of Geology, Millsaps College, organized a group of 14 people interested in geology, gems, fossils, cutting and polishing (lapidary work), etc. The group began to meet each month with an organized program and after two years the group numbers nearly 100 persons. This includes a number of young people who could very well be the geologists of tomorrow. The organization has been incorporated as a non-profit organization and is called the MISSISSIPPI GEM AND MINERAL SOCIETY. Its general purpose is to stimulate interest in rocks and minerals; to disseminate knowledge, methods and procedures for collection, identification, classification, cutting and polishing, setting and mounting of stones, and to promote good fellowship with each other and with other earth science personnel.

The group meets the fourth Friday of each month in the basement of Sullivan-Harrell Science Hall at 7:30 p.m. Elected officers for the 1960 year are as follows: President, Baxter Smith, Sun Oil Company; Vice-President, O. G. Maganes, Maxwell, Maganes, Spencer, Engineers; Recording Secretary, Mrs. Frances Heredeem, Teacher, Davis Elementary School; Corresponding Secretary, Mrs. R. H. Naylor, Housewife.

The Club has already sponsored several projects. One project was a 10-lecture series in Mineralogy designed for the amateur. These lectures were conducted during the months of February and March of 1959 by Prof. Wendell B. Johnson. Average attendance per session was 35 persons. During the summer of 1959 a series of lectures, demonstrations, field trips, etc., were given to the youngsters. Mr. Baxter Smith and Mr. Robert Paxton, Sun Oil Company, were largely responsible for the handling of this project. Instruction of the geology series was handled by Mr. Jesse Snowden, graduate of Millsaps College Geology Department and now doing graduate work at the University of Missouri.

On February 20 and 21, 1960, The Mississippi Gem and Mineral Society is sponsoring a rock, gem, fossil and mineral show which is the first of its kind in Mississippi and probably the first in this section of the country. This event is to be held at the Mississippi State Fairgrounds where a building has been rented to house the exhibits. Individual displays for competitive judging, dealer exhibits, individual collections and other spectacular displays should make this a worthwhile event for the public to see. It is sincerely hoped that everyone will help make this a big success and let the people know something about the materials that come from the crust of the earth.

### Editors Note:

An interesting side light to the above is the hobby of mounting semi-precious stones into various types of jewelry by Mrs. Wendell B. Johnson, wife of Prof. Wendell B. Johnson, Department of Geology, Millsaps College. Various slabs of colorful cutting materials are sent to the master craftsmen of Western Germany with instructions as to size of cut and type of cut and in several weeks the stones are sent back as some real stones of beauty. The various colors of Tiger-eye, Jade, Rose Quartz, Obsidian, Rhodonite, Howlite, Jasper, Rutiled Quartz, etc., are made up into unusual pieces of jewelry such as necklaces, ear-screws, pendants, bracelets, rings, etc. Even some of the Mississippi agates, turn into some unusually beautiful cabochons. Mrs. Johnson is very much interested in jewelry making and takes pride in showing her creative work to others at 165 Canton Club Circle.

## COMMITTEE REPORTS

### NOMENCLATURE

The Nomenclature Committee has recommended the following field names for new producing areas:

Field Name (Formation)	Discovery Well, Gauge, Date
South Stewart (Lower Tuscaloosa)	Discovery Oil and Gas Co. No. 1 Crosby, Sec. 27-T 2S — R 17W, Pearl River Co., Miss. IPF: 2,191, 800 CFGPD plus 26 BCPD, (Gr. 50° Est.), 16/64" chk., FTP 2200#, SITP 3100#. Comp. 9-7-59.
West Dexter (Lower Tuscaloosa)	Gulf Coast Drilling and Exploration Co. No. 1 Magee, Sec. 34-T 2N- R 12E, Walthall Co., Miss. IPP: 160 BOPD (16% BS & W) against 15/-64" chk., Gr. 36.6° API. Comp. 10-29-59.
Kiln (LK—Wash.-Fred.)	Marshall R. Young Drilling Co. No. 1 Jordanacres, Sec. 35 -T 7S - R 15W, Hancock Co., Miss. IPF: 105 BOPD, 75 MCF, plus 14.5 BW, 6/64" chk, TP 600#, Gr. 36.2°, API. Comp. 11-21-59.

### FIELD TRIP

The Field Committee held its first organizational meeting Wednesday, November 18th. Topics discussed were preliminary ideas for the Society field trip which is scheduled this spring, probably early May, and the field trip for the G.C.A.G.S. Convention at Biloxi (October, 1960) when the MGS is the host society. Committee members include: Chairman, F. X. Bland, A. L. Gilreath, Baxter Smith, J. L. Nichols, Alan Jackson, Larry Gordon, Jack Oyler, A. A. Sestak, W. E. Gardner, R. O. Taylor, and E. L. Horstman.

### BLOODBANK

The Bloodbank Committee of the Mississippi Geological Society is in its second year of operation. We are pleased to announce that there has not been a call for its services. The Secretary of the Society is maintaining a record of the membership will ing to serve as blood donors for other members of the M.G.S. and their families in the event of an emergency where other donors are unavailable.

During the 1958-1959 year, the Committee received answers from 178 members (approximately 58%).. There were 85 who expressed a willingness to cooperate if called upon. Only 16 reported a definite "No" and there are 77 ineligible members.

The Committee requests that any member who has not previously reported please complete the information requested below and return to L. B. Culligan, Chairman of the Blood Bank Committee, C/o The California Company, P. O. Box 822, Jackson 5, Mississippi.

Name  
Company Affiliation  
Availability as Donor: Yes, No, Ineligible  
Blood Type (If known)

### TREASURER'S REPORT

November, 1959

#### Income Statement

	Income \$	Expense \$
Publications		
Receipts from Sales	585.09	
Display Cabinet Cost		44.61
Refund		10.00
Dinner Meetings		
Reimbursement for Refreshments	79.42	
Meal Cost October 8 and 19th		435.52
Meals Paid November 2	342.00	
Meals Paid November 23	444.00	
Refreshment Expense, November		271.35
Newsletter		
Photos		16.00
Printing and Mailing		79.53
Administration		
Dues received	141.00	
Advertising, Stationery, Bank, etc.		24.94
Golf Tournament		
Announcements & Trophy Repair		28.66
Field Trip (July, 1959)		
Advertising Income	100.00	
	\$1,691.51	\$910.61
October Statement Errors		
Publ. Sales Tax		4.82
Dues Received (Additional)	20.00	
	\$1711.51	\$915.43
Excess of Income over Expense:		\$796.08

(Continued on Page 4)

**NEWS BULLETIN SPONSORS**

**NEELY BLUE PRINT & SUPPLY CO.**  
 FL 4-3523 JACKSON, MISS.

---

**KING EDWARD HOTEL**  
 FL 2-7741 JACKSON, MISS.

---

**A. W. WILLIAMS DRILLING CO.**  
 HEmlock 8-5603 MOBILE, ALA. FL 3-0541 JACKSON, MISS.

---

**BARDOID WELL LOGGING SERVICE**  
 EM 6-9470 DAN GOSSAGE JACKSON, MISS.

---

**HOTEL HEIDELBERG**  
 FL 2-6571 JACKSON, MISS.

---

**SUPPORT THE SOCIETY**  
 ATTEND THE MEETINGS

**SCHLUMBERGER WELL SURVEYING CORP.**  
 FL 2-8589 JACKSON, MISS.

---

**EDGAR TOBIN AERIAL SURVEYS**  
 CApitol 3-6203 SAN ANTONIO, TEXAS

---

**CORE LABORATORIES, INC.**  
 FL 3-0924 JACKSON, MISS.

---

**L. L. RIDGWAY CO., INC.**  
 FL 5-4751 JACKSON, MISS.

---

**P. G. A. C.**  
 FL 2-4337 JACKSON, MISS.

---

Insist on the bag with the Golden Tag  
**HUBCO SAND SAMPLE BAGS**  
 Write for free sample  
 HUTCHINSON BAG CORP., HUTCHINSON, KANSAS

**Treasurer's Report**

(Continued from Page 3)  
**December, 1959**  
**Income Statement**

	Income	Expense
Publications		
Receipts from Sales	\$ 98.99	
Cost of Stationery Supplies		\$ 9.57
Dinner Meetings		
Refreshment Cost (Dec. 7)		251.26
Meal Cost (Nov. 2 & 23)		874.17
Speaker Expense		44.07
Refreshment Contributions	405.72	
Meal Cost (Dec. 7)		280.82
Meals Paid (Dec. 7)	275.00	
Rental of Projector (Dec. 7)		5.18
Newsletter		
Mailing		23.28
Golf Tournament		
Engraving Trophy		15.74
Administration		
Dues received	57.00	
Advertising Booth CGAGS		9.00
Mailing Plates		10.02
Interest — First Federal (1959)	71.24	
Banking Charges		1.25
Excess of Expenditures over Income	\$896.95	\$1524.36 \$627.41

W. D. LYNCH, Treasurer

**THE GUSHER**

Deals anyone? Our distinguished President, M. F. (Daddy Warbucks) KIRBY, has found a "home" in Jackson, leaving his native company Gulf to colonize the field of consulting. His retreat may be found at 755 Milner Building. Phone FLeetwood 2-2853.

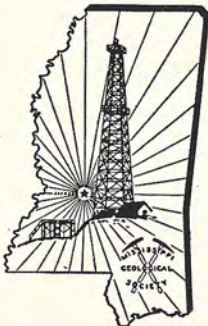
Tennessee Gas: DON MAHAFFEY has been transferred to Durango, Colorado, while REECE BOOKER arrives in town from Wichita Falls, Texas.

HAROLD R. WHITE, formerly associated with the Milner-White Oil Company, announces the opening of an office as independent petroleum geologist and consultant at 1050 Milner Building, Phone FLeetwood 2-1621.

If you have any news for this column or any other news items for the **Bulletin**, please contact Don Champlin or Bob Violette at FLeetwood 4-5703.

**NEWS BULLETIN**

P. O. Box 422  
 Jackson, Miss.



**Mississippi Geological Society NEWS BULLETIN**



Mr. Frederic F. Mellen  
 Consulting Geologist  
 Box 2584  
 Jackson, Miss.



# News

# BULLETIN

MISSISSIPPI GEOLOGICAL SOCIETY

VOLUME VII

FEBRUARY, 1960

NUMBER 5

## "THE FUTURE OF GULF COAST OIL"

The headline quotation is the theme adopted for the 1960 edition of the annual Gulf Association of Geological Societies Convention for which our own Society will be the host organization at convention time next fall. Ed Blanton, Sun Oil Company, has accepted the tremendous task of General Chairman of the convention, and needless to say, under his guidance we can anticipate a highly successful con-fab.



Ed Blanton

To promote such a large convention, Ed and his staff have been very active for a number of months now in making preparations for the autumn meet-

ing. In order to keep our membership informed regarding the Convention, the General Chairman has provided the following report:

The election of M. F. Kirby as the 1960 President of the Gulf Coast Association of Geological Societies was the signal for definite plans to begin for the next convention. The Mississippi Geological Society will be the host for the 10th Annual Meeting of the GCAGS. This meeting will be held at the Buena Vista Hotel at Biloxi, Mississippi during the period October 19-21, 1960.

Registration will be on Wednesday, October 19th, with all-day technical sessions on Thursday and Friday, the 20th and 21st. The Program Committee has been active for several months, and an interesting program is anticipated. The theme for the 1960 meeting will be "The Future of Gulf Coast Oil." A number of papers of general interest by well known authorities are being solicited. A field trip is also being planned.

Tentative plans for entertainment include a cocktail party, dance, and the Buena Vista's famous "seafood jamboree." Depending upon the interest shown, a golf tournament may be held on the Saturday following the convention. Entertainment for the ladies will be arranged by the Women's Geological Auxiliary.

A General Committee, which includes the chairman of

each of the convention committees, will function as the central planning body for the meeting. This committee is composed of the following members of the Mississippi Geological Society:

Ed Blanton	Sun	General Chairman
M. F. Kirby	Consultant	President, GCAGS
E. G. Jeffreys	Consultant	Treasurer, GCAGS
Gene Davis	Sinclair	Program Co-Chairman
Dick Farlee	Shell	Program Co-Chairman
Wendell B. Johnson	Millsaps College	Editor
Jim Furrh	Ohio	Sound and Projection
Les Bingenberg	Lion	Advertising
Bob Violette	Pan American	Publicity
Chuck Giffin	Schlumberger	Registration
Don Franklin	Ashmun and Hilliard	Housing
Dave Davis	Continental	Exhibits
Frank Bland	California	Field Trip
Glenn Clark	Rig-Time	Entertainment
Mary G. Blanton		Women's Activities

The very important and active Program Committee consists of the following:

Gene Davis, Co-Chairman  
Dick Farlee, Co-Chairman  
Leland Culligan  
Rudy Ewing  
Dudley Hughes  
Graham Hughes

Y'ALL COME . . . . . TO BILOXI

### SPONSORS

For the coming year this News Bulletin is being made possible by the cooperation of the companies that are listed on Page Four. Take note and . . .

SUPPORT OUR SPONSORS

SEE PAGE 3 FOR MARCH MEETING ANNOUNCEMENTS

## MISSISSIPPI GEOLOGICAL SOCIETY

(Affiliated with the American Association of Petroleum Geologists  
& Gulf Coast Association of Geological Societies)

### EXECUTIVE COMMITTEE

M. F. Kirby, Independent—President  
R. V. Ewing, Dixie—Vice President  
W. H. Hollingsworth, Sinclair—Secretary  
W. D. Lynch, California—Treasurer  
D. T. Franklin, Ashmun & Hilliard—Program Chairman  
C. E. Brown, Mobil—Past President

### News Bulletin Staff

R. T. Violette, Pan American—Editor  
C. D. Champlin, Pan American—Assistant Editor

### Correspondents

X. M. Frascogna, Independent  
Ray Frisby, Ohio  
M. K. Kern, Independent  
Dean Miller, Southern States  
J. J. Offenheiser, Shell  
W. E. Taylor, Union

## GCAGS ELECTS

At a recent meeting of the Gulf Coast Association of Geological Societies Executive Committee, two of our members were elected officers for the coming year. Most of



M. F. Kirby, Pres.



E. G. Jeffreys, Treas.

us in the Society are aware of this honor; however, it is felt that sufficient recognition has not been given the recipients. We, therefore, congratulate both M. F. Kirby and E. G. Jeffreys for their election as President and Treasurer, respectively, of the GCAGS. This is an individual honor, as well as one for the Society, and it carries considerable responsibility, inasmuch as the GCAGS is composed of 11 geological societies, representing a combined membership in excess of 5,000.

## NEW MEMBERS

At a recent Executive Committee meeting the following new members were approved for active membership:

Leonard J. Austin, Consultant  
Clarence A. Gilbert, Sinclair  
Robert P. Grigg, Jr., Tidewater  
Robert E. Lowry, Humble  
Bernard D. McGrath, Texaco  
D. J. Monroe, Jr., Sun  
John M. Perrigo, Sun  
Harry W. Webb, Jr., Shell

For associate membership the following men were approved:  
Leroy Hudson, Hycatector  
Clifton L. Phillips, Hycatector  
Richard E. Roach, Rig Time

We welcome you into the Society, and invite you to attend our meetings and solicited your support of our program.

## STATE SAMPLE LIBRARY



Construction of the proposed State Sample Library began early last month, and the above photo indicates recent progress. The building site is located on State of Mississippi land near the National Guard Armory on Northwest Street in north Jackson.

According to Tracy Lusk, State Geologist, no completion date has been estimated as yet. However, when completed the building will provide space for storage of samples as well as a laboratory room for processing (washing and drying) samples, an examination room for the use of visiting geologists, a reception room, and a private office for a manager. Present plans provide for the manager to be a stratigrapher which will enable the Survey to begin a program of subsurface studies.

Additional funds are still needed to properly equip the building when it is completed. Besides certain funds and land furnished by the State of Mississippi, the following is a list of the companies in the oil industry that have already contributed or made a commitment in order to make this project a reality:

The Atlantic Oil Company  
Carter Oil Company  
Continental Oil Company  
Gulf Oil Corporation  
Humble Oil and Refining Company  
Jett Drilling Company  
Larco Drilling Company  
Lion Oil Company  
Magnolia Petroleum Company  
The Ohio Oil Company  
Olin Oil and Gas Corporation  
Pan American Petroleum Corporation  
Skelly Oil Company  
Shell Oil Company  
Southern Natural Gas Company  
Tennessee Gas and Oil Company  
Texaco, Inc.  
Union Producing Company

For further information contact Tracy Lusk, State Geologist, at the Mississippi Geological Survey, University, Mississippi.

## MEETING ANNOUNCEMENTS

March Meetings of the Mississippi Geological Society  
 Date: Wednesday, March 2 Place: Crown Room  
 King Edward Hotel  
 Time: 5:15 p.m. Cocktail Hour  
 6:00 p.m. Dinner  
 Technical Paper: "Recent Developments in the Lower  
 Cretaceous Trend of Mississippi"  
 Thomas H. Philpott, Vice President,  
 Exploration, Olin Oil and Gas Corp.,  
 New Orleans, La.  
 Price: \$3.00 per person

FOR RESERVATIONS, Call Bob Ross at FLeetwood 2-5054  
 by 4:30 p.m., Tuesday, March 1,  
 1960.

Date: Monday, March 21 Place: Crown Room  
 King Edward Hotel  
 Time: 5:15 p.m. Cocktail Hour  
 6:00 p.m. Dinner  
 Technical Papers: "Characteristics of Deep-Seated Salt  
 Dome Faulting"  
 Dudley Hughes, American Petrofina  
 Tom Fitzgerald  
 (Speaker and Subject are awaiting  
 company clearance)  
 Price: \$3.00 per person

FOR RESERVATIONS, Call Bob Ross at FLeetwood 2-5054,  
 by 4:30 p.m., Friday, March 18,  
 1960.

SUPPORT THE SOCIETY — PLAN NOW TO ATTEND

## TREASURER'S REPORT

### JANUARY, 1960

#### Income Statement

	Income	Expense
<b>Publications</b>		
Receipts from Sales	\$227.50	\$
Bad debt		12.50
<b>Dinner Meetings</b>		
Meals Paid Jan. 7 (164)	485.00	
Meals Paid January 20 (92)	276.00	
Contr. for Refr. Jan 7 (Hycatector)	73.61	
Paid for Refr.		264.00
<b>Newsletter</b>		
Engraving		7.36
<b>Golf Tournament</b>		
Contributions	710.00	
Door Receipts	264.00	
Meals		777.15
Fellowship		345.33
Orchestra		165.00
Prizes & Misc.		145.36
<b>Administration</b>		
Meeting Notices		47.90
Dues Received	27.00	
Sale of Projector	60.00	
Misc. (Bank charges, AAPE card)		31.55
	\$2,123.11	\$1,796.15
Excess of Income over Expense:	\$326.96	

Believing that the Executive Committee, the Society's Committee Chairmen, and the membership at large might be interested in and should be cognizant of certain phases of the Society's financial transactions and status, the treasurer submits the following fiscal data concerning the last seven months of 1959:

#### Balance Sheet

##### Assets

	June 1, 1959	Jan. 1, 1960
Bank Balance	\$3,848.60	\$1,417.70
Deposit First Federal	2,017.65	2,088.89
Petty Cash	40.00	
*Publication Inventory	20,000.00	16,879.47
Accounts Receivable	516.00	**
Totals	\$26,422.25	\$20,386.06

(Continued on Page 4)

## COMMITTEE REPORTS

### NOMENCLATURE

The Nomenclature Committee has recommended that West Langsdale Field be used to designate the new producing area recently discovered by the Kennington — Thurber — Miller No. 1 Brewer et al, Section 28-T 1N- R 17E, Clarke County, Mississippi. Official completion gauge was: IPP: 97.5 BOPD (Gr. 19") plus 10 MCF & BW, GOR 100:1, from perforations in the Selma Chalk.

### ENTERTAINMENT

The Mississippi Geological Society will hold its annual **SPRING DANCE**, a semi-formal affair, on April 16th from 8:00 p.m. till 1:00 a.m. in the Crown and Coronet Rooms of the King Edward Hotel. Jules Barlows' orchestra will provide the music, and breakfast will be served at midnight. Ladies of the Geological Auxiliary will furnish the decorations.

Admission will be \$5.00 per person with all refreshments included in the tab.

### BOWLING



First Half Winners — Union Producing

Upon completion of the first half of the 1959-60 season the Jackson Petroleum Bowling League completed the tightest race in the 8 year history of the league. On the final night only 6 points separated the top 9 teams. Union Producing Company surged from 5th place to win the first-half championship. Final standings for the first half:

	Won	Lost	Pct.
1. Union	70	50	.583
2. Sun	69	51	.575
3. Calco Dusters	66	54	.550
4. United Gas	66	54	.550
5. Independents	66	54	.550
6. Cities Service	65	55	.542
7. Pan Am Oilers	64	56	.533
8. Gulf Prides	64	56	.533
9. Continental	62	58	.517
10. Tennessee Gas	62	58	.517
11. Pan Am Pets	60	60	.500
12. Ohio	60	60	.500
13. Texaco	57	63	.475
14. Sinclair	49	71	.408
15. PGAC Jets	46	74	.383
16. Calco Pros	34	86	.283

The Petroleum Bowling League is sponsored by the Mississippi Geological Society. Participation is restricted to personnel who are engaged in the exploration phase of the oil industry. It affords an opportunity for geologists, geophysicists, landmen, scouts and other oil men to combine good fellowship with friendly competition.

## NEWS BULLETIN SPONSORS

<b>NEELY BLUE PRINT &amp; SUPPLY CO.</b>	
FL 4-3523	JACKSON, MISS.
<b>KING EDWARD HOTEL</b>	
FL 2-7741	JACKSON, MISS.
<b>A. W. WILLIAMS DRILLING CO.</b>	
HEmlock 8-5603 MOBILE, ALA.	FL 3-0541 JACKSON, MISS.
<b>BAROID WELL LOGGING SERVICE</b>	
EM 6-9470	DAN GOSSAGE JACKSON, MISS.
<b>HOTEL HEIDELBERG</b>	
FL 2-6571	JACKSON, MISS.
<b>SUPPORT THE SOCIETY</b>	
ATTEND THE MEETINGS	

<b>SCHLUMBERGER WELL SURVEYING CORP.</b>	
FL 2-8589	JACKSON, MISS.
<b>EDGAR TOBIN AERIAL SURVEYS</b>	
CApitol 3-6203	SAN ANTONIO, TEXAS
<b>CORE LABORATORIES, INC.</b>	
FL 3-0924	JACKSON, MISS.
<b>L. L. RIDGWAY CO., INC.</b>	
FL 5-4751	JACKSON, MISS.
<b>P. G. A. C.</b>	
FL 2-4337	JACKSON, MISS.
Insist on the bag with the Golden Tag <b>HUBCO SAND SAMPLE BAGS</b> Write for free sample HUTCHINSON BAG CORP., HUTCHINSON, KANSAS	

### Treasurer's Report

(Continued from Page 3)

#### Liabilities

Loan from Houston	\$2,500.00	---
Accounts Payable	3,304.12	---
Society Net Worth	\$20,618.13	\$20,886.06
<b>Totals</b>	<b>\$26,422.25</b>	<b>\$20,886.06</b>

\*August 18, 1959 Inventory @ Sales Price (\$30,757.50) plus June and July, 1959, sales (\$1447.77) = \$32,205.27, less reserves for deterioration, obsolescence, bad debts, expense of sales. Above sales include tax.

Other minor assets (e.g. P.A. System, Stationery, etc. not included).

\*\*Anticipated contributions for refreshments, Newsletter Advertising, Publication Invoices, etc., normally attributable to Accounts Receivable and aggregating less than \$300 not included above.

\*\*Golf Tournament expenses less receipts and speakers' expenses attributable to Accounts Payable totalling about \$600 not included in above.

#### Income Statement (Seven Months)

Publications	Income	Expense
Meetings	\$3220.53	\$2733.97**
Newsletter	2481.48	3818.11
	240.00	329.88

Administration	1083.24*	495.94
Golf Tournament, Oct., '59		32.30
Dance—May, '59		1001.86
Field Trip — May, '59	576.00	1338.95
	\$7801.25	\$9751.01

Excess of Expense over Income: \$1949.76

\*Mainly Dues

\*\*Includes \$2500.00 repayment of loan.

It can be concluded from the above that we are living off the "fat" of our Publication Inventory; that income from dues will meet operating expenses including paying for a little over half the total cost of the Newsletter (the other portion being paid for by advertising); that meeting expenses are running a deficit of about \$60.00 each (though this last is diminishing through recent improved planning).

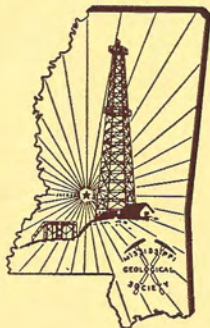
It is recommended that these facts be brought to the attention of the membership in order that they may be more mindful of the need to promote revenue through their help in publication sales and to curtail unnecessary costs by making meeting reservations, etc. It is further suggested that all committee chairmen and members be budgeted more closely concerning proposed deficit or income-producing programs.

W. D. LYNCH

Treasurer — 1-15-60

### NEWS BULLETIN

P. O. Box 422  
Jackson, Miss.



**Mississippi  
Geological Society NEWS BULLETIN**

# News

# BULLETIN

MISSISSIPPI GEOLOGICAL SOCIETY

VOLUME VII

MARCH, 1960

NUMBER 6

## MGS ANNUAL SPRING DANCE -- APRIL 16

Although at press time the weather is in somewhat disagreement, it is time for one of the featured entertainment events of the year — the Annual Spring Dance. The Entertainment Committee, headed by socializing Bob Ross, has planned a gala **semi-formal** affair between the hours of **8:00 p.m. to 1:00 a.m.**, Friday April 16, 1960, in the **Crown and Cornet Rooms** of the **King Edward Hotel**. Jules

Barlow's orchestra will provide the music for dancing, and climaxing the evening at midnight there will be a **breakfast a la King Edward**. All refreshments will be furnished for the occasion, making the total bill of fare for the evening \$5.00 per person. For tickets, contact Bob Ross at FLeetwood 2-5054 or other ticket representatives as soon as possible. Tickets are limited and are going fast!

## APRIL MEETING ANNOUNCEMENTS

Date: Tuesday, April 5      Place: Crown Room  
King Edward Hotel

Time: 5:30 p.m. Dinner  
6:30 p.m. Technical Session

Technical Paper: "Subsurface Study of Fault Characteristics Associated with Deep-Seated Salt Domes in Northeast Portion of the Mississippi Salt Basin"  
Dudley Hughes, District Geologist,  
American Petrofina

Price: \$3.00 per person

FOR RESERVATIONS, call Bob Ross at FLeetwood 2-5054 by 4:30 p.m., Monday, April 4, 1960.

Date: Tuesday, April 19      Place: Crown Room  
King Edward Hotel

Time: 5:30 p.m. Dinner  
6:30 p.m. Technical Session

Technical Papers: "Mineral Deposits for State of Mississippi Other Than Oil and Gas"  
Tracy Luck, State Geologist  
"Legal Aspects of the Oil Business,"  
John Grower, Attorney, Brunini-  
Everett-Grantham & Quin

Price: \$3.00 per person

FOR RESERVATIONS, call Bob Ross at FLeetwood 2-5054 by 4:30 p.m., Monday, April 18, 1960.

SUPPORT THE SOCIETY — PLAN NOW TO ATTEND

### SPONSORS

For the coming year this News Bulletin is being made possible by the cooperation of the companies that are listed on Page Four. Take note and . . .

SUPPORT OUR SPONSORS

## MISSISSIPPI GEOLOGICAL SOCIETY

(Affiliated with the American Association of Petroleum Geologists  
& Gulf Coast Association of Geological Societies)

### EXECUTIVE COMMITTEE

M. F. Kirby, Independent—President  
R. V. Ewing, Dixie—Vice President  
W. H. Hollingsworth, Sinclair—Secretary  
W. D. Lynch, California—Treasurer  
D. T. Franklin, Ashmun & Hilliard—Program Chairman  
C. E. Brown, Mobil—Past President

### News Bulletin Staff

R. T. Violette, Pan American—Editor  
C. D. Champlin, Pan American—Assistant Editor

### Correspondents

X. M. Frascogna, Independent  
Ray Frisby, Ohio  
M. K. Kern, Independent  
Dean Miller, Southern States  
J. J. Offenheiser, Shell  
W. E. Taylor, Union

## COMMITTEE REPORTS

### Nomenclature

The Nomenclature Committee has recommended the following field names for new producing areas:

Field Name (Formation) South Amory (Mississippian)	Discovery Well, Gauge, Date
Northeast Freewoods (Wilcox)	McLean — Hill No. 1 Brasfield — Boyd Unit, Sec. 31-T13S-R17W, Monroe Co., Miss. IPP: 27.3 BOPD (Gr. 20.5°API) plus 3 BW & 26.4 MCFG. Comp. 1-25-60.
	Miss. - La. - Tex. et al No. 1 USA, Sec. 36-T5N-R1E, Franklin Co., Miss. IPF: 128 BOPD (Gr. 31°API) plus 1.25 BW & 25.6 MCFG, TP 400#. Comp. 2-3-60.

### Blood Bank

During the month the Blood Bank Committee was called upon to help replace sixteen pints of blood for W. E. Craft, Independent, who was accidentally burned several months ago. Requirements for this worth project were met. Both Craft and the Committee appreciate the response from the Society members.

## TREASURER'S REPORT

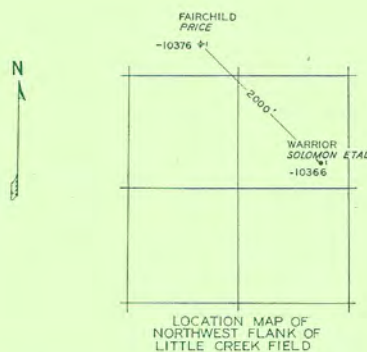
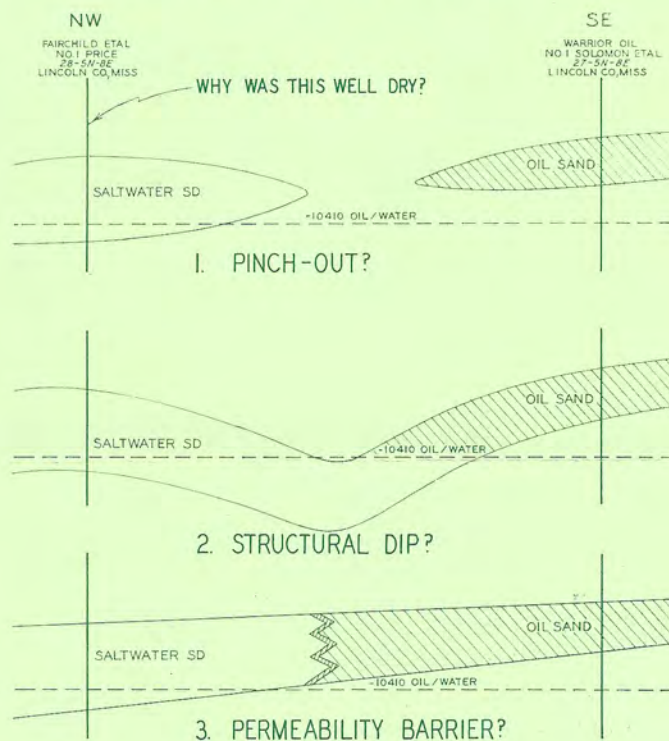
### FEBRUARY, 1960

	Income	Expense
<b>Publications</b>		
Receipts from Sales	\$196.89	
Reproduction, mailing and refunds		\$ 69.89
<b>Dinner Meetings</b>		
Meals Paid (February)	340.00	
Meal Costs (January)		837.90
Refreshment Expense (1 meeting)		150.00
Refreshment Contributions (5 meetings)	687.32	
Speaker Expense and Projection Rental		54.99
Notices		24.10
<b>Newsletter</b>		
Advertising Income	60.00	
Mailing, Photos and Engraving		38.32
<b>Dance</b>		
Ticket Printing and Decorations		82.76
<b>Field Trip</b>		
Advertising Income	340.00	
<b>Administration</b>		
Dues Received	27.00	
Advertising, Pointer Purchase and Miscellaneous		50.33
Printing Constitution and Member List		81.17
<b>Totals:</b>	<b>\$1,651.21</b>	<b>\$1,389.46</b>
Excess of Income over Expense:		\$ 261.75

W. D. LYNCH

## GEOLOGICAL PUZZLER

### WHY WAS THIS WELL DRY?



In August 1959, the Fairchild et al-Price No. 1 on the north flank of the Little Creek Field was completed as a dry hole. This well encountered the top of the field pay (Denkman Sand) at -10,376 feet, or 34 feet above the average oil/water contact of this portion of the field (-10,410 feet). The Price No. 1 is located 2,000 feet northwest of the Warrior-Solomon-Williams-Price No. 1 which encountered 22 feet of net Denkman oil sand at -10,366 feet.

Sidewall cores at two foot intervals from top to bottom failed to reveal the existence of any shows whatsoever in the No. 1 Price well. The Schlumberger indication curve reads -.5 ohms m<sup>2</sup>/m resistivity, which value also indicates 100% saltwater saturation in the sand.

Why was the No. 1 Price a dry hole? The accompanying sketch proposes three of the possible explanations. Perhaps there are other possible answers to this rather unusual situation (tilted water-level?) and, if so, I would appreciate hearing from any interested reader.

(Continued on Page 3)

## Geological Puzzler

(Continued from Page 2)

If this situation is depositional, why is it so unusual? Perhaps there exists similar situations in the Lower Tuscaloosa of South Mississippi, but I know not where.

Wilbur H. Knight

## -MISSISSIPPI GEM AND MINERAL SOCIETY EXHIBITION

There was some doubt at one time early in February, as to whether everything concerning the first state wide gem, mineral, rock and fossil show to be put on in the State of Mississippi would be completed on time. The week preceding Feb. 20, was one of feverish activity by many of the Mississippi Gem and Mineral Society's Members.

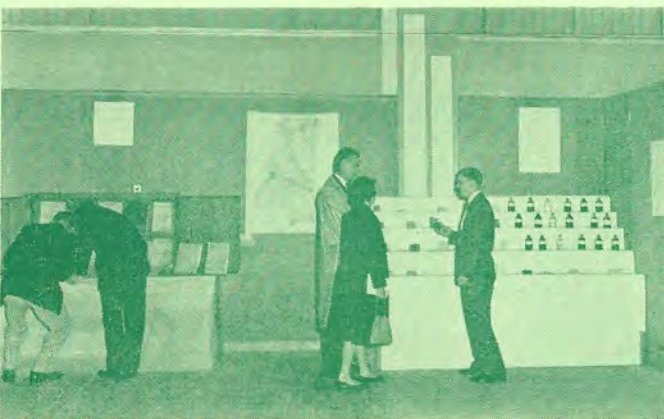
In retrospect, our fears were groundless. This Society has very successfully held an exhibition comparable in every way with similar exhibitions put on by older and more experienced societies. The local club was chartered in Mississippi in March 1958 as a non-profit organization.

Our recent show at the Mississippi State Fair Grounds, February 20 & 21, was attended by over 2000 persons. Ten dealers representing gem and rock shops from Kansas, Arkansas, Alabama, Louisiana, Texas and Mississippi set up booths at the exhibition and contributed greatly to its overall success.

Included in the exhibits were mineral specimens worthy of a large museum, polished semi-precious stones, replicas of all the major cuts of diamonds, faceted semi-precious and precious gems, rocks of all three major types, and displays of fossils ranging in size from microscopic to parts of fossil whales and mastodons. All of the exhibits were housed in glass cases of both wall and counter types.

The feature displays ranged from Indian artifacts from mounds in Mississippi to examples of priceless Oriental jade. The competitive entries by individuals ranged from dull, but different rocks, to beautiful crystals of many kinds of minerals to faceted gem stones and cabochons. Also featured was a field trip to fossil localities within about an hours drive of Jackson led by Clyde V. Clark, of the Mississippi Highway Department Lab. About 40 persons made the field trip.

The Mississippi Geological Society had a display with electric logs as a background from which streamers led to actual cores of the respective formations represented on the electric logs. Various Society members were present at the booth to explain the exhibit and to answer the many questions.



Pictured above is Ron Ohnoutka, Pan American (extreme right) on duty at the Geological Society's display.

For those who wanted to buy specimens, costume jewelry, or new equipment the dealers present had a wide variety to choose from. From time to time during the exhibition demonstrations of many operations such as

slabbing, trimming, cutting cabochons, chopping, faceting and mounting were put on by many of the dealers.

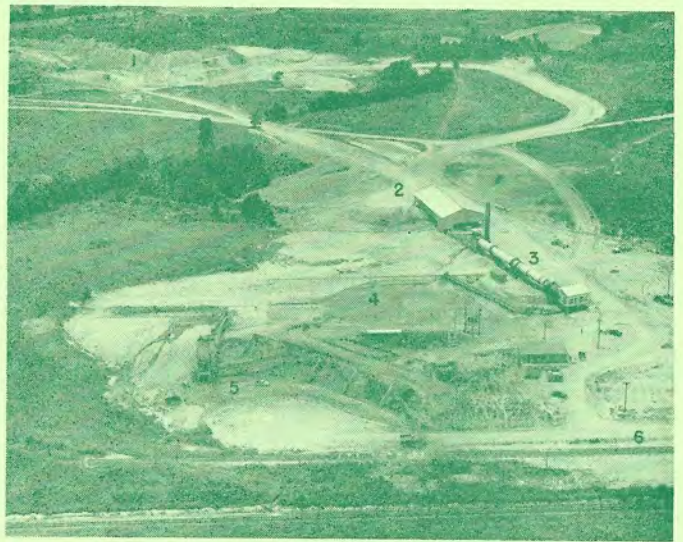
The recent exhibition put on by the Mississippi Gem And Mineral Society can be called a success. Plans are already underway to make the show next year bigger and better.

Baxter L. Smith  
President

## LIGHT-WEIGHT CONCRETE AGGREGATE MADE FROM YAZOO CLAY

Early in 1956 Jackson Ready Mix Concrete, a local producer of quality concrete and concrete products, began a search for suitable raw materials for light-weight concrete aggregate.

Reports of the Mississippi Geological Survey on Yazoo County and Scott County had indicated the probable suitability of Yazoo clay for a light aggregate. W. H. Day, President of Jackson Ready Mix, employed Fred Mellen and Tom McCutcheon to search for suitable materials and make preliminary tests. As a result of their investigations, a 670-acre tract of land was selected for quarry and plant site at Cynthia, 10 miles northwest of downtown Jackson on the Y&MV Railroad. (Photo below). Here the Yazoo clay is nearly 400 feet thick.



Miss-Lite aggregate plant of Jackson Ready-Mix Concrete at Cynthia, Hinds County, Mississippi:

(1) Yazoo clay pits; (2) Clay dry shed; (3) Rotary Kiln; (4) Clinker storage area; (5) Grinding, screening, and storage of graded aggregates, and rail or truck shipping facilities.

Miss-Lite Aggregate is a clay cinder produced by firing raw clay in a 200-foot gas-fired rotary kiln to a temperature above 2000°F. In the firing process the clay is dehydrated, loses its plasticity, and develops a scoria-like cellular texture. When ground and screened to size, it now completely replaces sand and gravel in the masonry products manufactured here by Jackson Ready Mix Concrete and some other masonry producers. The weight of the ordinary 8x8x16-inch block using sand and chert gravel is 40 pounds, but the Miss-Lite block weighs only 25 pounds and has excellent structural qualities. The aggregate has been used extensively in some of the new buildings in Jackson to reduce weight. It has been approved by the Louisiana and Mississippi Highway Departments as a seal coat aggregate in double bituminous surfacing.

It is interesting that this new structural material is made from the same clay that is the terror of contractors and home owners in the Jackson area.

(Continued on Page 4)

## NEWS BULLETIN SPONSORS

<b>NEELY BLUE PRINT &amp; SUPPLY CO.</b>	
FL 4-3523	JACKSON, MISS.
<b>KING EDWARD HOTEL</b>	
FL 2-7741	JACKSON, MISS.
<b>A. W. WILLIAMS DRILLING CO.</b>	
HEmlock 8-5603 MOBILE, ALA.	FL 3-0541 JACKSON, MISS.
<b>BAROID WELL LOGGING SERVICE</b>	
EM 6-9470	DAN GOSSAGE JACKSON, MISS.
<b>HOTEL HEIDELBERG</b>	
FL 2-6571	JACKSON, MISS.
<b>SUPPORT THE SOCIETY ATTEND THE MEETINGS</b>	

<b>SCHLUMBERGER WELL SURVEYING CORP.</b>	
FL 2-8589	JACKSON, MISS.
<b>EDGAR TOBIN AERIAL SURVEYS</b>	
CApitol 3-6203	SAN ANTONIO, TEXAS
<b>CORE LABORATORIES, INC.</b>	
FL 3-0924	JACKSON, MISS.
<b>L. L. RIDGWAY CO., INC.</b>	
FL 5-4751	JACKSON, MISS.
<b>P. G. A. C.</b>	
FL 2-4337	JACKSON, MISS.
Insist on the bag with the Golden Tag <b>HUBCO SAND SAMPLE BAGS</b> Write for free sample HUTCHINSON BAG CORP., HUTCHINSON, KANSAS	

### Light-Weight Aggregate

(Continued from Page 3)

Jackson Ready Mix is currently producing nearly 200 cars of Miss-Lite Aggregate monthly, much of which is used by the Company. The Company, organized in 1946, is locally financed. Furthermore, it takes pride that all of its raw materials come from within a few miles of Jackson. The cement used by the Company is purchased from cement companies located in Mississippi.

Of special interest to the geologist is the large clay pit from which the raw clay for Miss-Lite Aggregate is dug. The pit is currently about 60 feet deep and its walls reveal deep-seated slumping as well as oxidization of the Yazoo clay to the average depth of 30 feet. The underlying blue-gray clay is rich in marine fossils. The most notable weathering products are the abundant selenite crystals and associated patches of hydrated iron oxide. Up to now, only one Zeuglodon has been uncovered, and its enormous broken remains can be seen in the yard of the field office at Cynthia.

F. M.

### MISSISSIPPI ACADEMY OF SCIENCE

The Mississippi Academy of Science, Inc., will hold its annual meeting at Millsaps College on April 29 & 30. In conjunction with the meeting there will be a Science Fair on a State level. Individuals desiring to present a paper before the meeting should contact R. J. Hughes, Chairman of the Earth Science Section, in care of the Department of Geology, University of Mississippi, or R. W. Farlee, Vice Chairman, Jackson.

### THE GUSHER

Latest addition to the oil company family . . . SOUTHERN NATURAL GAS CO., offices at 708 Vincent Building, Phone FLeetwood 2-5578. Staff includes Don Scherer, District Geologist and Dick Pfister, Geologist; Harry Edgeworth, District Landman, and a geological draftsman and secretary.

### NEWS BULLETIN

P. O. Box 422  
Jackson, Miss.



## Mississippi Geological Society NEWS BULLETIN



Mr. Frederic F. Mellen  
Consulting Geologist  
Box 2584  
Jackson, Miss.



# News

# BULLETIN

MISSISSIPPI GEOLOGICAL SOCIETY

VOLUME VII

APRIL, 1960

NUMBER 7

## ELECTION TIME -- MAY 18

It is that time of year again to consider candidates and their qualifications for the various Society elective offices for the new fiscal year beginning June 1, 1960. The elections are to take place at the last meeting of the year on Wednesday, May 18. A distinguished nominating committee, headed by Luther Powell, (now transferred to New Orleans), and consisting of Charles Brown, Phil Einsenstatt, Ed Blanton, and Les Ringenberg, have submitted the following slate of candidates for your consideration. For those that are interested, our constitution provides an opportunity for additional nominations for the offices to be made from the floor prior to election time.

### FOR PRESIDENT



**Rudy V. Ewing**

University of Oklahoma, BS, 1939  
1939-48: Continental Oil Company  
1948-60: Dixie Geological Service  
Affiliations: Miss. Geol. Soc. & AAPG

Past Service: Program Chairman (MGS), 1958-59; Vice President (MGS), 1959-60.



**Robert B. Ross**

University of Texas, BS, 1950  
1951-54: Geologist with W. J. Mechura  
1954-60: Tennessee Gas: District Geologist  
Affiliations: Miss. Geol. Soc. & AAPG

Past Service: Chairman of Entertainment Committee (MGS), 1959-60; Frio Sand Study Group (HGS)

### SPONSORS

For the coming year this News Bulletin is being made possible by the cooperation of the companies that are listed on Page Four. Take note and . . .

SUPPORT OUR SPONSORS

### FOR VICE PRESIDENT



**Emmett R. Adams**

Louisiana State University, BS, 1950  
1951-60: Shell Oil Company; Division Stratigrapher  
Affiliations: Miss. Geol. Soc. & SEPM

Past Service: Treasurer (MGS), 1958-59; Associate Editor, GCAGS; Editor, SEPM; Representative, SEPM.



**Don T. Franklin**

University of Nebraska, BS, 1950  
1952-59: Continental Oil Co.  
1959-60: Ashmun & Hilliard  
Affiliations: Miss. Geol. Soc. & AAPG

Past Service: Program Chairman (MGS), 1959-60; Field Trip Committee; Executive Committee.



**Robert Womack**

University of Oklahoma, BS, 1941  
1940-41: Phillips Petroleum Co.  
1941: Kerlyn Oil Co.  
1941-45: U. S. Navy  
1945-47: Gulf Oil Corp.  
1947-51: The California Company  
1951-60 Geological Consultant  
Affiliations: Miss. Geol. Soc. & AAPG

Past Service: Nomenclature Committee; Brookhaven Field Paper, Regional Meeting, 1949.

(Continued on Page 2)

## SEE PAGE 2 FOR LAST MEETING OF THE YEAR

## MISSISSIPPI GEOLOGICAL SOCIETY

(Affiliated with the American Association of Petroleum Geologists & Gulf Coast Association of Geological Societies)

### EXECUTIVE COMMITTEE

M. F. Kirby, Independent—President  
 R. V. Ewing, Dixie—Vice President  
 W. H. Hollingsworth, Sinclair—Secretary  
 W. D. Lynch, California—Treasurer  
 D. T. Franklin, Ashmun & Hilliard—Program Chairman  
 C. E. Brown, Mobil—Past President

### News Bulletin Staff

R. T. Violette, Pan American—Editor  
 C. D. Champlin, Pan American—Assistant Editor

### Correspondents

X. M. Frascogna, Independent  
 Ray Frisby, Ohio  
 M. K. Kern, Independent  
 Dean Miller, Southern States  
 J. J. Offenheiser, Shell  
 W. E. Taylor, Union



**Daniel E. Herlihy**

Georgia Institute of Technology, B.C.E., 1946

1947-60: Mobile Oil Company; Senior Geophysicist

Affiliations: Miss. Geol. Soc. & Soc. of Expl. Geophysicists

Past Service: Entertainment Committee (MGS), 1959-60

## Election Time . . . .

(Continued from Page 1)

### FOR SECRETARY



**Weldon C. Henkhaus**

Texas A & M, BS, 1954

1954-60: Arkansas Fuel; Division Geologist

Affiliations: Miss. Geol. Soc.; AAPG; SEG.

Past Service: Secretary, GCAGS; GCAGS Representative, South Texas Geol. Soc.



**Allen Jackson**

Louisiana State University, BS, 1947 (MS, 1951)

1951-60: Humble

Affiliations: Miss. Geol. Soc. & AAPG

Past Service: Field Trip Committee (MGS), 1959-60; Field Trip Committee (Northern California Geol. Soc.)

### FOR TREASURER



**Charles D. Champlin**

Oklahoma A & M, BS (Business & Accounting) 1951

Oklahoma A & M, BS (Geology) 1956

1956-60: Pan American Petroleum Corporation

Affiliations: Miss. Geol. Soc.

Past Service: Assist. Editor, MGS NEWS Bulletin (1959-60)

## LAST MEETING OF THE YEAR

### ELECTION OF OFFICERS

FREE

Date: Wednesday, May 18th

Place: Dumas Milner Lodge

Time: 6:00 p.m.

FREE Barbecue Dinner

FREE Keg Beer

Technical Paper:

"Kirby's Swan Song"

M. F. Kirby, Geological Consultant & President, MGS

Price: **NO CHARGE**

FREE

**RESERVATIONS FOR THIS MEETING IS A MUST!**

Please call Bob Ross at FLeewood 2-5054 by 10:00 a.m., Tuesday, May 17, 1960.

FREE

FREE

FREE

### MISSISSIPPI SOUND FIELD TRIP

The Society's Field Trip Committee, responsible for the field trip at the annual GCAGS Convention next fall in Biloxi, held a trial run of the offshore portion, Friday, April 22, 1960. Eleven geologists and chemists, representing California, Ethyl Corp., Pan American and Shell, made the interesting trip, which was led by Dr. R. R. Priddy who is presently on sabbatical leave from Millsaps College at the Gulf Coast Research Laboratory, Ocean Springs, Mississippi. J. Y. Christmas, a marine biologist, currently located at the Research Lab, was also present on the trip and provided interesting commentary regarding the marine life encountered through-out the days venture.

Transportation was furnished by the Gulf Coast Research Lab's boat, the "Hermes," and included in the trip were recent sedimentation observations in the Mississippi Sound as well as on Horn Island, with particular emphasis on rapid secondary sedimentation changes due to wind, current, and tides. Several cores were taken from the Sound bottom, and a trawl was made for marine life. At noon a shrimp boil was enjoyed aboard the Hermes, following a two mile "stroll" down the Horn Island beaches. Climaxing the day, Dr. Priddy conducted a tour of the Gulf Coast Research Lab's facilities.

We wish to extend our appreciation to the committee, Dr. Priddy, and other staff members of the Gulf Coast Research Laboratory (including for the use of the "Hermes") for an interesting day in the field.

## FIFTEENTH ANNUAL FIELD TRIP MISSISSIPPI GEOLOGICAL SOCIETY

"The Cenozoic of Southeastern Mississippi  
and Southwestern Alabama"

May 12, 13 and 14, 1960

You are cordially invited to unlimber your rock-picks, boots and hand lenses and join us in what promises to be an interesting and informative field trip.

The participants are to assemble May 12, 1960 at the Continental Trail-ways Bus Station, 201 E. Pascagoula St., Jackson, Mississippi, and are to board the buses at 8:00 A. M. The first day will be devoted to the inspection of sediments of the Vicksburg, Jackson and Claiborne Groups cropping out between Jackson and Meridian, Mississippi. A highlight of this day will be a stop at the Marquette Cement Company Quarry, Brandon, Mississippi, where excellent exposures of the Vicksburg limestone will be viewed (good fossil collecting). Lodging for the night will be at the **Lamar Hotel, Meridian, Mississippi.**

The second day's investigations will cover the structural and stratigraphic aspects of Paleocene to Miocene Formations and members exposed between Meridian, Mississippi and Mobile, Alabama. Several type sections or type localities will be viewed on this segment of the trip. Field trip personnel will stay at the **Holiday Inn, Dauphin Island, Alabama.** Examples of recent sedimentation will be noted at Dauphin Island on the morning of the third day.

On the final day, the trip to Jackson, exposures of Miocene through recent units will be examined. Special emphasis is to be placed on the Citronelle Formation and the Plio-Pleistocene terraces which are well developed and exposed in southern Mississippi.

The registration fee is \$25.00 (\$12.50 for students). Of this sum \$7.50 is non-refundable in case of cancellation, as certain expenses will be pre-committed upon receipt of your application; however, a copy of the guide book will be sent to you postpaid.

W. E. Gardner

To:

Mr. W. E. Gardner

The California Company

P. O. Box 822

Jackson, Mississippi

Enclosed is my check, payable to the Mississippi Geological Society in the amount of \$25.00 (\$12.50 for students) to cover bus transportation, two box lunches, a shrimp boil and one copy of the Guide Book of the Fifteenth Annual Field Trip, May 12, 13 and 14, 1960.

I realize that **I am to make reservations** by card or letter at the Lamar Hotel, Meridian, Mississippi, (\$5.50 single; \$8.00 twin), for the night of May 12th and at the Holiday Inn Motel, Dauphin Island, Alabama, (\$8.00 single; \$10.00 twin), for the night of May 13th. Reservations are to be confirmed by the respective hostelrys. In addition, I will note on my reservation requests that I am a participant in the M.G.S. Field Trip.

Address:

Signed

Company or School:

## GEOLOGISTS AT THE U. S. ARMY ENGINEER WATERWAYS EXPERIMENT STATION<sup>1</sup>

or

**They Said It Couldn't Be Done**

Jack R. Van Lopik<sup>2</sup>

The U. S. Army Engineer Waterways Experiment Station, a principal research and testing facility of the Army's Corps of Engineers, covers 1,220 acres — and the fields of hydraulics, soil mechanics, flexible (asphalt) airfield pavement, and concrete research. Some 700 civilians, 3 Army officers, and 11 enlisted men work at the original 400-acre reservation and headquarters at Vicksburg, and the 820-acre Jackson Installation. The professional staff totals 147 — 119 engineers, 11 geologists, and 17 other scientists. Geologists have been known to get "lost" in organizations where they are outnumbered more than 10 to 1 by engineers — some geologists get lost in 1,220 acres. Fortunately no WES geologist has been lost on station grounds and their contributions to station projects have been substantial.



WES, Vicksburg, Mississippi

The mission of the Waterways Experiment Station is to conduct investigations in cases where model studies, laboratory experiments, field tests, and detailed analyses will assist engineers in designing and building dams, levees, locks, airfields, vehicles, etc., involved in the vast world-wide program of the Corps of Engineers. It also provides a research service to assemble, analyze, and disseminate experimental data. Why geologists? W—h—y not?

It all started back in 1929 with the establishment of the Experiment Station, which has since grown into the largest hydraulic laboratory in the world. Responsibilities in soils and concrete also increased and by the middle 1940's there was a general consensus that the organization was firmly established and would prevail — even with geologists as employees. Initial contacts with geologists were cautiously made and it was decided that these people should not have offices at Vicksburg. At this point it should be mentioned that in 1941 another governmental agency with headquarters in Vicksburg, the Mississippi River Commission, had employed H. N. Fisk to conduct a geological study of the Lower Mississippi Alluvial Valley. The study culminated in the 1944 publication of a monumental work, oddly enough entitled "Geological Investi-

1/ Publication has not been authorized by anyone even remotely connected with the U. S. Army Corps of Engineers.

2/ Geology Branch, Soils Division, U. S. Army Engineer Waterways Experiment Station, Vicksburg, Mississippi.

(Continued on Page 4)

(Continued from Page 3)

gation of the Alluvial Valley of the Lower Mississippi River." Dr. Fisk maintained and supervised a technical staff in Baton Rouge during the conduct of this and subsequent investigations — and also taught at Louisiana State University. As Baton Rouge was, and still is, a considerable distance from Vicksburg this arrangement seemed most desirable and in 1946 Fisk's group became the WES Geology Branch. Dr. Fisk served as branch chief until 1948. It is rumored that he is presently head of geological research for a small Houston Independent — Humble Oil and Refining Company.

In 1948 R. J. LeBlanc, a Dutchman from LSU, took over as chief of the branch and the officers were moved to the WES Vicksburg reservation — indicating good behavior on the part of the geologists! The offices are still in Vicksburg, but LeBlanc left after a few months to accept a position with Shell Development Company — all good Dutchmen end up there. LeBlanc can be seen every morning entering an office labeled something like Director of Geologic Liaison, however, he also frequents other establishments in Houston so this fact may be irrelevant. A. N. Osanik, another Dutchman from LSU, served as chief for a short time and also migrated to Houston. No, not Shell — Humble!

About this time the WES personnel people concluded that geologists from LSU have a definite affinity for Houston — a malady contracted when, upon transfer from Baton Rouge, the rarified atmosphere of the Vicksburg hills is encountered. At any rate, J. R. Schultz was appointed branch chief late in 1948. Dr. Schultz had taught at Brown University and it was hoped that he would be immune to **Houstonitis**. This proved to be the case, however, the lack of rock in this part of the country dismayed him so much that he resigned in 1955 — 7 years of nothing but overburden! During this period Dr. Schultz co-authored, with Dr. Cleaves, the widely-used textbook on engineering geology cryptically entitled "Geology in Engineering." He is presently associated with Harza Engineering Company in Chicago.

Charlie Kolb, who has been associated with the branch off and on almost since its inception, became branch chief in 1955. He is presently on leave of absence working on his Ph.D., and ogling coeds, at LSU. Jack Van Lopik, who surprised a good many people by getting his Ph.D. from (guess where) LSU in 1955, is functioning as acting chief during Charlie's absence. Warren Grabau, Bill Steinriede, John Shamburger, Ron Mabrey, Will Dornbusch, Harry Woods, Jerry Broughton, and Stan Norcom, complete the technical staff of the branch. These men have collected various degrees from such unlikely places as Michigan State, Mississippi State, Ole Miss, Missouri School of Mines, Millsaps, Louisiana Polytech and Oklahoma State—surprise, no LSU. In spite of the fact that graduates of Ole Miss and Mississippi State are in the same office, things run fairly smoothly and the refereeing services of Mrs. J.J. McLesky, long-suffering branch secretary, are seldom utilized.

The activities of these geologists can possibly best be examined in the light of the over-all organization of the Waterways Experiment Station. The station has three ma-

for technical divisions—Hydraulics, Soils, and Concrete. The Hydraulics Division is active in all phases of hydraulic engineering. This includes the establishment of design criteria, field testing of structures, flume and water-tunnel investigations of hydraulic fundamentals, and model studies of proposed works. Small-scale working models of rivers, dams, locks, harbors, and tidal waterways are used to improve methods of flood control; develop better and safer harbors and waterways; design hydraulic structures; protect coastal areas from hurricane waves; and determine the effects of military explosions on shore installations and structures. The Hydraulics Division has done much to improve the following quotation, taken from an (anonymous) non-WES, harbor design manual:

"In early history, men without machines built crude structures easily damaged by the forces of the sea. Today, through the use of steel, concrete, and cranes that can handle forty-ton stones, the structures destroyed by the sea are well built. Modern design has also improved harbors; the efficiency at which they trap sand has been increased manyfold."

The Concrete Division, located at the Jackson Installation, develops information to insure that the concrete made and placed by the Corps of Engineers is of adequate quality to give the service intended and that it is obtained at the lowest cost consistent with the required quality. As the Corps of Engineers is one of the largest users of concrete in the world, interest in the stuff is quite natural. It should also be mentioned that petrographer-type geologists are employed in the Petrography Section of the Special Investigations Branch. Geologists Bryant and Katherine Mather head the branch and section, respectively. The trials, tribulations, and projects of this group should provide ample material for a separate article.

The activities of the Soils Division are quite diverse. Soils are tested for suitability of use as construction materials and as foundations for massive engineering works. Design criteria and construction methods are developed for flexible (bituminous or black-top) airfield pavements. Research in the field of mobility is aimed toward moving military vehicles in all types of terrain without the use of roads. Allied programs of military research and development work include design of prefabricated pavements, foundation conditions as related to prefabricated piers and missile launching sites, evaluation of the effects of environmental factors on military operations, stabilization of soils for military purposes, and classification of terrain and vehicles with respect to trafficability. The primary function of the Soils Division's Geology Branch is to aid engineers through the application of geologic knowledge to their many projects. This is a very noble attitude on the part of the geologists—possibly influenced by the fact that they are paid for work of this type.

Aiding engineers is not as simple as it may sound—for geologists and engineers are different breeds. (This fact has been discussed in an Iowa State University engineering publication and some of the points are recalled from memory.) It has been said that geologists and other scientists want to learn things, whereas the engineer wants to do things. This is not being fair to the engineer — for he is very eager to learn things that have a practical or definite

(Continued on Page 5)

(Continued from Page 4)

application in his work. However, he doesn't think much of geologists that go around talking about Pre-Cambrian porphoritic anticlines or some other such nonsense — and would at least prefer that they speak English. (Engineers often discuss the geologist's shortcomings in a highly technical jargon of their own — called swearing.) Another thing that bothers the precise, quantitative, and mathematical mind of the engineer is the fact that all geology is not quite as well organized as engineering. In other words, he is upset when he asks two geologists the same question and gets two different interpretations. Nevertheless, geologists have been right enough times to demonstrate their utility — usually at the expense of their popularity. On the other hand, geologists being human — or almost so — like to have their advice taken and find it hard to believe that there are numerous other factors that must be considered in most engineering problems. For example, geologists tend to pout when geologically unsuited sites are selected after all economic, engineering, and other factors have been considered. This all boils down to the fact that an engineer must know when, and what, to call a geologist. Colonel E. H. Lang, the present Director of the Waterways Experiment Station, is exceptionally qualified on both counts.

To date, most Geology Branch effort has been expended in investigations related to the foundation, construction, mobility, and trafficability programs of the Soils Division. As previously mentioned, in its formative years the branch was engaged chiefly in a comprehensive study of the Lower Mississippi Alluvial Valley. The ultimate goal was to outline the various geological factors influencing the types of sediments deposited in the valley. From an engineering viewpoint the most important result of this work was the demonstration that the alluvial deposits fall into natural groups each of which possesses distinctive lithology, areal distribution, and physical properties. It was also found that the physiographic expressions of the various types of deposits are often so distinctive that the type material underlying an area can often be predicted from a study of aerial photographs. This investigation was not only an early effort to identify soils from aerial photographs, but has furnished a secure foundation for similar comprehensive studies of the Red River Valley and Yazoo Basin areas. Subsequent work has extended the general principles derived from such studies to specific problems encountered in the construction of levees, lock sites, control structures, canals, and other flood control and navigation works in the valleys of the Lower Mississippi River and tributaries.

Research projects have included studies of sediment transport by the Mississippi and the utilization of geologic information and principles in the prediction of river behavior. A study has also been made of the fault pattern of the Gulf Coast region and its possible influence on courses of the Mississippi River and tributaries. Surveys are almost continuously being made of locations, quantities, and origin of gravel deposits and riprap materials in or near the valley. Sources of concrete aggregate and filter gravels are investigated. Detailed studies of various dam sites, on the Mississippi River tributaries, are also conducted. A special study of the Mississippi River deltaic plain in Southeastern Louisiana was recently completed.

Of great importance in the operation of the branch is the steady accumulation of boring data (i.e., data concerning borings), especially of those of a fairly shallow variety, in the Recent alluvium of the Mississippi River floodplain, delta and tributary valleys. Over the years, approximately 400,000 logs of varying quality have been collected and filed. This file also provides a tremendous "club" in academic discussions of alluvial valley genesis — even the most hardened opponents are visibly shaken when someone nonchalantly mentions that, ". . . although we cannot state positively, these conclusions are suggested by the logs of 400,000 borings." This is Gamesmanship — the art of winning games without actually cheating — at its finest.

The above-mentioned studies constitute civil works investigations. Geology Branch military projects have been primarily concerned with the evaluation of overseas airfields and the military evaluation of geographic areas. The former project required localized geologic studies of individual overseas airfields; a survey of the land-forms, soil types, drainage features-characteristics, and aggregate sources within a short distance of each airfield. Unfortunately this project has not been operative since missiles started replacing airplanes and WES geologists have been fairly well confined to the United States. The State Department allegedly heralded the project demise with wild rejoicing. The second study, the military evaluation of geographic areas, includes the development of quantitative techniques for describing, classifying, mapping, and comparing desert terrain. Desert terrain? Well, can you think of a more logical organization to conduct desert research than the Waterways Experiment Station? We have some pretty good salesmen at the station too! The techniques developed in this study are being utilized to compare terrain at the Army's R & D Test Station at Yuma, Arizona, with that of world deserts. By this method we hope to ascertain the suitability of the Yuma site for desert terrain testing programs — aimed at determining the impact or effect of terrain on various military activities and material.

The results of these civil and military investigations are recorded in numerous published and unpublished reports. A list of all WES publications, or those of a geological nature, is available on request. Geological reports include such best sellers as "Louisiana's Historic Shoreline or Fiction and Fact from Leander's Almanac," "Velly Curious — The Story of Japanese Oil Exploration in the Middle East," "The Oil Glut or Let It Burn, Myron McKinley," and "Ostracoda — Their Sex Life and Mores," (with an introduction by Drs. H. V. Howe and Margaret Mead).

At present, Geology Branch personnel are engaged in (1) a dam site investigation on the Caddo River near DeGray, Arkansas, (locating near-by (ha!) sources of rock suitable for utilization in the closure of Old River, Louisiana, (2) a feasibility study for predicting natural soil moisture distribution patterns in areas of seasonal frost, (3) exploring the possibilities of establishing a boring file utilizing automatic card sorters, computers, and/or plotters, (4) a preliminary study concerning the development of an airborne, electromagnetic sensing device capable of perceiving and recording pertinent ranges of those factors of terrain which affect trafficability, (5) a detailed study of soil conditions in an area roughly two miles on either side of the Mississippi River from Donaldsonville to the Gulf, (6) mapping ground-water conditions in the Lower Mississippi Alluvial Valley, and (7) a continuation of the desert terrain studies. If you meet a calm, unhurried geologist in the midst of this feverish activity, he is either a visitor or just doesn't understand the situation. Tours are conducted at the Vicksburg Installation twice daily and are open to the general public. Y'all come.

**NEWS BULLETIN SPONSORS**

**NEELY BLUE PRINT & SUPPLY CO.**  
 FL 4-3523 JACKSON, MISS.

---

**KING EDWARD HOTEL**  
 FL 2-7741 JACKSON, MISS.

---

**A. W. WILLIAMS DRILLING CO.**  
 HEmlock 8-5603 MOBILE, ALA. FL 3-0541 JACKSON, MISS.

---

**BAROID WELL LOGGING SERVICE**  
 EM 6-9470 DAN GOSSAGE JACKSON, MISS.

---

**HOTEL HEIDELBERG**  
 FL 2-6571 JACKSON, MISS.

---

**SUPPORT THE SOCIETY**  
 ATTEND THE MEETINGS

**SCHLUMBERGER WELL SURVEYING CORP.**  
 FL 2-8589 JACKSON, MISS.

---

**EDGAR TOBIN AERIAL SURVEYS**  
 CApitol 3-6203 SAN ANTONIO, TEXAS

---

**CORE LABORATORIES, INC.**  
 FL 3-0924 JACKSON, MISS.

---

**L. L. RIDGWAY CO., INC.**  
 FL 5-4751 JACKSON, MISS.

---

**P. G. A. C.**  
 FL 2-4337 JACKSON, MISS.

---

Insist on the bag with the Golden Tag  
**HUBCO SAND SAMPLE BAGS**  
 Write for free sample  
 HUTCHINSON BAG CORP., HUTCHINSON, KANSAS

**TREASURER'S REPORT — MARCH, 1960**

**Income Statement**

	Income	Expense
Publications		
Receipts from Sales	\$ 93.61	
Reproduction, mailing, sales tax and refund		\$ 88.24
Dinner Meetings		
Meals Paid — March	702.00	
Meal Costs — Feb. & March		1,157.80
Refreshment Contributions	455.41	
Speaker Expense, Notices and Proj. Rental		97.38
Newsletter		
Advertising Income	60.00	
Photos, Printing and Mailing		168.12
Dance		
Contribution	25.00	
Field Trip		
Advertising Receipts	480.00	
Administration		
Dues Received	24.00	
Bowling Trophy and Misc.		32.92
	<u>\$1,840.02</u>	<u>\$1,544.46</u>
Excess of Income over Expense		\$ 295.56
February Balance Carried Fwd:		<u>3,814.48</u>
March balance		<u>\$4,110.04</u>

W. D. LYNCH  
4/11/60

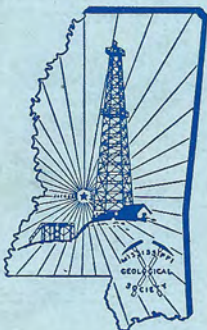
**NEW MEMBERS**

We would like to welcome the following new members that were approved for membership at a recent Executive Committee meeting:

Reece Booker,	Tennessee Gas
Donald L. Broudreaux,	Cities Service
Robert M. Brown, Jr.	British American
David T. Ewing,	Texaco
Joseph F. Fritz,	Humble
Robert J. Jones	Texaco
Jack Jordan,	Humble
L. W. Riley,	Trowbridge
Jack D. Waller,	Tennessee Gas
Robert J. Westover,	Humble
Roger L. Wood,	California

**NEWS BULLETIN**

P. O. Box 422  
 Jackson, Miss.



**Mississippi Geological Society** NEWS BULLETIN



Mr. Frederic F. Mellen  
 Consulting Geologist  
 Box 2584  
 Jackson, Miss.

# News

# BULLETIN

MISSISSIPPI GEOLOGICAL SOCIETY

VOLUME VII

MAY, 1960

NUMBER 8

## ANNOUNCING THE NEW OFFICERS



Rudy V. Ewing  
President



Emmett R. Adams  
Vice President



Allen Jackson  
Secretary



Daniel E. Herlihy  
Treasurer



L. B. Culligan

At the well attended (approx. 200 members) last meeting of the year, May 18th, the above new officers were elected to guide the Society through the 1960-61 fiscal year. Also, elected to the post of AAPG Representative was L. B. Culligan.

As a finale to this years administration the following space is devoted to a message from our President, M. F. Kirby, entitled . . . .

### KIRBY'S SWAN SONG

Editors Note: For those that were not present at the last meeting of the year or for those that were present and for one reason or another missed *Kirby's Swan Song*, we hereby present a re-run, not in glorious living color, but in static free FM type.

#### TO THE MEMBERS OF THE MISSISSIPPI GEOLOGICAL SOCIETY:

First, I would like to take this opportunity of thanking you for having given me this chance to serve as your President these past twelve months. It has been as great an honor as I have ever received and probably ever will. I am grateful to you for having given me the opportunity.

I would also like to thank you for the strong and efficient officers you elected to help with the Society's affairs. To each of them I am and will ever be grateful for the splendid cooperation and untiring efforts they have each contributed to our program for the year. Each has given of his talents and his time in generous proportions, oft times unrecognized by the Society, and never fully appreciated. Rudy and the two Bills, to each of you a tip of my hat.

Next, I would like to thank each of Committee Chairmen and each of their committeemen. Most all have done good jobs this year and some have made outstanding contributions to the Society's activities.

The Program Committee, Don Franklin, Chairman, Charles Bilberry, John Lukert, Don Hook, Don Mahaffey and Ray Frisby did an outstanding job in arranging for a total of fifteen programs, which presented twenty-five papers, and for the first time to my knowledge papers were turned away due to the fact they could not be worked into the schedule.

The Committee, which is probably most responsible for the increase in enthusiasm in the Society this year, is the Entertainment Committee. This committee deserves to be decorated for service way above and beyond the call to duty. The energies spent while they set about their duties seemed to ignite each individual that they came in contact with. Bob Ross, Chairman, Les Ringenberg, Al Gilreath, Dan Herlihy, Ed Russell, and Walter McMahan, to each of you our thanks for a truly outstanding job.

The committee, which is probably the most unappreciated and most time consuming, yet is one of the most important, is the Publications Committee, this year handled so adeptly by Felix Webster and Marvin Oxley — one begins to realize the amount of work these men have contributed when you are aware of the amount of money the Society realizes from the sale of its publication, this year approximately \$4,000.

The Field Trip Committee, Frank Bland, Chairman, Baxter Smith, Al Gilreath, John Newton, Alan Jackson, Larry Gordon, Ned Harvey, J. L. Nichols, Andy Sestak, Jack Oyler, and Emmett Adams, deserves a large round of applause. They have planned not only the regular annual field trip, but one additional trip, another example

(Continued on Page 2)

### SPONSORS

For the past year this News Bulletin has been made possible by the cooperation of the companies that are listed on Page Four. Take note and . . .

SUPPORT OUR SPONSORS

## MISSISSIPPI GEOLOGICAL SOCIETY

(Affiliated with the American Association of Petroleum Geologists  
& Gulf Coast Association of Geological Societies)

### EXECUTIVE COMMITTEE

M. F. Kirby, Independent—President  
R. V. Ewing, Dixie—Vice President  
W. H. Hollingsworth, Sinclair—Secretary  
W. D. Lynch, California—Treasurer  
D. T. Franklin, Ashmun & Hilliard—Program Chairman  
C. E. Brown, Mobil—Past President

### News Bulletin Staff

R. T. Violette, Pan American—Editor  
C. D. Champlin, Pan American—Assistant Editor

### Correspondents

X. M. Frascogna, Independent  
• Ray Frisby, Ohio  
M. K. Kern, Independent  
• Dean Miller, Southern States  
• J. J. Offenheiser, Shell  
• W. E. Taylor, Union

## Swan Song

(Continued from Page 1)

of the enthusiasm this year. They also have the trip so organized that with little or no modification they can conduct the field trip for the G.C.A.G.S. Convention this fall.

The Projection Committee, Jim Furrh, Chairman, Dave Robbins, Dick Burnette, and Bob Johnson, have done an excellent job this year. The large number of varied speakers and papers have increased their problems many fold, but as each of you will notice, we have had the proper equipment to satisfy the needs of each individual speaker. Thinking back over the year, I can think of five different types of projects they have arranged for, often with little prior notice and also difficult to find equipment.

The Nomenclature Committee, Charles Bilberry, Chairman, Rudy Ewing, H. M. Morse, Armando Ricci, Fred Geisendorff, and Dave Brassfield, have done a most commendable job in their selection of names for the fifteen discoveries in the state within the past year. They set a record of sorts in not being overridden by the President of a single Lions Club within the state.

The Society is very indebted to the Publicity Committee, Fleming Browning. It was his innovation, the mailing service, that has made the task much less difficult, not only for his duties, but those of the News Bulletin staff, the Field Trip Committee, the Secretary in compiling his annual membership list, but now the Treasurers in mailing the annual dues notices. Also much time was spent in preparing the press releases for many of our out of town speakers.

The efficiency with which the Blood Bank Committee operated this year made us aware of the amount of work that had been done prior to our first need for blood donors. The response received to their appeal was most gratifying. This committee was composed of Leland Culligan, Chairman, Verne Culbertson, Bill Lynch, and Bill Hollingsworth.

The News Bulletin staff, Bob Violette, Editor, Don Champlin, Ass't. Editor, Bill Thornton, Jim Offenheiser, Ray Frisby, Dean Miller, Gene Taylor, Frank Frascogna, and Marshall Kern, have done a job for which they should be very proud. They have kept us informed and even tried to educate us with the introduction of short geological articles of interest.

Knowing that such a paper was disseminating Society publicity to our many out of town recipients, such as trade journals, A.A.P.G. and the numerous other geological societies within the Gulf Coast area, gave many of us additional pride in this Society.

The Golf Tournament Committee, Ed Lanuius, Chairman, and Verne Culbertson, functioned in such a fashion that their efforts will not be surpassed for some time to come. I could say much more in regard to the tournament they conducted, but I have expressed my opinion regarding the affair on many previous occasions, most of you know how I feel.

My thanks also to the Preservation of Cores and Samples Committee, Claude Smith, Chairman, for the continued conscientious work they have done. A building is being presently erected to aid with the Committee's future functions. This committee has exerted abundant energies which are now being rewarded by this building. Claude, this is quite a tribute to your efforts.

I would also like to express my gratitude to those on the Suggested Title Committee, those that wrote the abstracts for the Red Book, and to Wendell Johnson for the information he collected regarding the Highway Geological Marker signs, something that I feel some future administration will find most useful. There are numerous other individuals that have contributed much to the activities such as the Co-Program Chairman, the speakers, the Dues-Study Committee, and many others, to each of you my thanks.

In closing, I would like to repeat the closing paragraph of my first letter to you as your President, I quote: "Again, I wish to thank each of you for your most refreshing interest and excellent cooperation in organizing the events of the coming year. If this enthusiasm can be maintained throughout the year, I have no doubt that this will be a year in which we will all be proud that we have belonged to the Mississippi Geological Society."

Gentlemen, I am proud.

## AS THE EDITOR SEES-SAW IT

The curtain is slowly closing on one of the most successful years in the history of the Mississippi Geological Society. Much has been said and noted regarding the outstanding overall program, record membership, high quality and regularity of the meetings, fine entertainment, and the general enthusiasm within the ranks of the Society. As one may surmise, this banner year did not just happen. It was the culmination of a tremendous planning job plus the hard work and long hours in getting the plan into workable order. True enough, much of the success can be attributed to the various committees and their chairmen; however, the basic planning, organization and "push" was accomplished by one of our better administrations, headed by the old mastermind himself, energetic M. F. Kirby, President. Necessary check and balance was handled expertly by Rudy Ewing, Vice President, and genial Bill Hollingsworth, Secretary, did an excellent job in the paper-administration department. Soft-spoken and bathing suit clad Bill Lynch, Treasurer, accomplished a momentous task in revising the bookkeeping system and providing the Society with a sound financial foundation as well as keeping the membership at large informed as to its financial status. These gentlemen, therefore, should be commended both individually and collectively for their fine leadership this past year.

To wind up the year it has been a genuine pleasure—extremely hectic at times I assure you — but a pleasure to serve as the News Bulletin Editor. I wish to thank our sponsors and the many news article contributors that made the monthly publication of the News Bulletin possible. However, like many others right now, your Editor is ready for a long, long rest . . . THIRTY!!

R. T. Violette, Editor

## COMMITTEE REPORTS

### ENTERTAINMENT

During this past year the refreshments for all the cocktail parties, dance, and barbecue were made possible by the following companies and individuals. The Mississippi Geological Society is most grateful to these contributors.

A. W. Williams Drlg. Co., Baroid Mud Logging Service, Christensen Diamond Products Co., Continental Laboratories, Core Laboratories, Inc., D. A. Biglane, Delta-Western Exploration Co., Deposit Guaranty Bank & Trust Co., E. B. Lanuius, Edgar Tobin Aerial Surveys, Inc., Exploration Techniques, Inc., George D. Hunt, George M. Harrison, Gulf Coast Drilling & Exploration Co., Hart & Kelly Laboratories, Hycalog, Inc., Hycatector Well Logging Service, Jett Drilling Company, Inc., Lane-Wells Co., Larco Drilling Co., L. A. Wyatt, L. L. Ridgway Co., Inc., Lyle Cashion Co., Marshall R. Young Drilling Co., Neely Blueprint & Supply Co., Pan Geo Atlas Corp., Rig Time, Inc., Schlumberger Well Logging Corp., Shelby Pitts, Southern Mud Logging, Inc., Wellcore.

(Continued on Page 4)



## GULF COAST RESEARCH LABORATORY

Richard R. Priddy

(On Sabbatical Leave to the Laboratory)

Gulf Coast Research Laboratory is situated on the Mississippi mainland two miles east of Ocean Springs and 4 miles east of Biloxi. It consists of 40 acres partly of hilly, dissected, well forested beach ridges and partly of bayous winding through grassy, tidal flats.

The buildings consist of a huge two-story frame home to house visitors and summer faculty, a large brick research headquarters, a larger brick teaching laboratory, a frame museum, a frame mess hall, and two 2-story dormitories to accommodate 55 students. The large house and the laboratories overlook Davis Bay, the east arm of Biloxi Bay. Mississippi Sound is visible, often as far as the barrier islands, Ship and Horn.

In 1946 the Mississippi Academy of Science conceived the idea of a research laboratory on Mississippi's coast. For the first few summers it was located in the nearby woods of Magnolia State Park, using the buildings of an old CCC camp. Then through the continuous efforts of the late Dr. R. L. Caylor, biology professor at Delta State College, state moneys were obtained and the present beach property purchased. Fortunately the Mississippi Board of Institutions of Higher Learning took over the management and most of the financing in 1950. A board of the Academy continues to act in an advisory capacity.

The laboratory has a year-round staff of four. Three are marine biologists working on various problems — oysters, oyster enemies, shrimp, menhaden, and other fishes. One member is a physical oceanographer. Most every semester a college teacher on sabbatical leave comes to pursue his own investigations. Other scientists drop in for vacations or even week end research. Currently, geologists with a major oil company are collecting one bottom sample per square mile from the Sound and from the shallower part of the Gulf.

In the summer months the Laboratory bustles. Four or five visiting professors handle up to 50 college or graduate students who are taking marine courses in botany, invertebrate zoology, vertebrate zoology, ichthyology, geology and problems in marine sedimentation. Another course is specifically for teaching high school science. Yet another is an off-campus L. S. U. research effort. Usually there are 3 or 4 thesis problems underway. Lectures are held in the buildings but most laboratory work is on the beaches, up the bayous, on the barrier islands, or on the Laboratory's work boat, the Hermes.

Geological courses have been held each summer since 1948. At first all work dealt with sandy beaches but later methods were devised for coring the sea bottom and schemes were perfected for studying the muddy cores. Three geological theses have been written, one on sand size distribution of the beaches and shoals, a second on muddy bottoms, and a third on heavy mineral concentrations on the coast and barrier islands. Mississippi Geological Survey Bulletin 82 dealt with the investigation through 1955. Pictured below are some of the activities at the Laboratory.



Coring in the Gulf of Mexico at the eastern end of Horn Island.



Examining current marks superimposed on wave marks at low tide on Marsh Point sandspit, one mile west of Laboratory.



Observing laminae of dark heavy, minerals exposed by trenching of Bellefontaine beach, five miles east of Laboratory.

In the past few summers the geological work has been set up as a 3 week (3 semester hour) period of Marine Geology followed by a 3 week (3 semester hour) period of Problems in Marine Sedimentation. Actually, class work and field work are interchangeable, to meet the requirements of weather and tide. By the end of residence each student has authored several papers and helped in writing 3 or 4 more; on subjects ranging from currents, waves, rippling, tidepools, dunes, sandspits, cusps, salt pans, bayous, and tidal marshes, to the hourly changes in the physics and chemistry of sea water.

Students range in preparation from advanced geology undergraduates to engineers and petroleum geologists with advanced degrees. Arrangements can be made for 3 weeks of participation for credit. Visitors are welcome to join the students for shorter periods. Families cannot be lodged at the Laboratory but meals can be obtained at the dining room.

### MARINE GEOLOGY COURSE — SUMMER 1960

The Gulf Coast Research Laboratory is offering its Marine Geology course beginning July 18th and again on August 27th. This course includes a general introduction to the principles of marine geology with a study of bottom contours of the shelves and ocean basins, coast formation and erosion, with special attention to deltas and bottom deposits of low lying coasts, and there will be some treatment of the effects of temperature and salinity on sedimentation. Prerequisites are twelve hours of geology. The course is taught by Dr. R. R. Priddy and Dr. D. A. De Vries, and it offers 6 semester hours, graduate or under-graduate credit. For further information contact Dr. R. R. Priddy, Gulf Coast Research Laboratory, P. O. Box 218, Ocean Springs, Mississippi.

**NEELY BLUE PRINT & SUPPLY CO.**  
 FL 4-3523 JACKSON, MISS.

---

**KING EDWARD HOTEL**  
 FL 2-7741 JACKSON, MISS.

---

**A. W. WILLIAMS DRILLING CO.**  
 HEmlock 8-5603 MOBILE, ALA. FL 3-0541 JACKSON, MISS.

---

**BAROID WELL LOGGING SERVICE**  
 EM 6-9470 DAN GOSSAGE JACKSON, MISS.

---

**HOTEL HEIDELBERG**  
 FL 2-6571 JACKSON, MISS.

---

**SUPPORT THE SOCIETY**  
 ATTEND THE MEETINGS

**SCHLUMBERGER WELL SURVEYING CORP.**  
 FL 2-8589 JACKSON, MISS.

---

**EDGAR TOBIN AERIAL SURVEYS**  
 CApitol 3-6203 SAN ANTONIO, TEXAS

---

**CORE LABORATORIES, INC.**  
 FL 3-0924 JACKSON, MISS.

---

**L. L. RIDGWAY CO., INC.**  
 FL 5-4751 JACKSON, MISS.

---

**P. G. A. C.**  
 FL 2-4337 JACKSON, MISS.

---

Insist on the bag with the Golden Tag  
**HUBCO SAND SAMPLE BAGS**  
 Write for free sample  
 HUTCHINSON BAG CORP., HUTCHINSON, KANSAS

**Committee Reports**

(Continued from Page 2)

**NOMENCLATURE**

The Nomenclature Committee has recommended the following field names for new producing areas:

Field Name	Discovery Well, Gauge, Date
(Formation) Carmichael (Eutaw)	Broadhead & Stack No. 1, Robert Land, Sec. 9-T 1N- R 17E, Clarke Co., Miss. IPP: 45 BOPD + 20% SW, Gr. 19°. Comp. 2-2-60.
Cypress Creek (LK, Rodessa)	Cashion & Larco No. 1 Jarrett, Sec. 27-T 10N- R 6W, Wayne Co., Miss. IPF: 144 BOPD, CG 33.6°, 12/64" chk, TP 0#, CP 0#. Comp. 3-6-60.
Glasscock (Wilcox)	Serio-Punches No. D-1 Breaux, Sec. 2-T 4N- R 4W, Adams Co., Miss. IPF: 107 BOPD, CG 48.3°, 12/64" chk., TP 170#. Comp. 3-26-60.
Kokomo (LK, Paluxy)	Sun No. 1 McDonald, Sec. 26-T 3N- R 11E, Walthall Co., Miss. IPF: 5130 MCFGPD + 13.2 BW, 17/64" chk., TP 3967#. Comp. 4-10-60.
Smithdale (Lower Tuscaloosa)	Larco et al No. 1 Dykes, Sec. 21-T 4N- R 6E, Amite Co., Miss. IPF: 336 BOPD, CG 40°, 10/64" chk. TP 2100 #, GOR 1000:1. Comp. 4-15-60.

**TREASURER'S REPORT  
 APRIL, 1960**

	Income	Expense
Publications		
Receipts from sales	\$ 392.27	
Dinner Meetings		
Meals paid	405.00	
Refreshment expense		\$ 278.50
News Letter		
Mailing Expense		21.45
Dance		
Orchestra Expense		250.00
Ticket sales	910.00	
Contributions	205.00	
Refund from Auxiliary (Decorations)		14.00
Field Trip		
Advertising sales (Guide Book)	420.00	
Administration		
Miscellaneous expense		21.05
Dues paid	12.00	
	\$2,358.27	\$ 571.00
Excess of Income over Expense:		1,787.27
March Balance Carried Forward:		4,110.04
		<u>April Balance: \$5,897.31</u>

Of this nearly \$6,000, about \$2,000 is on deposit with First Federal; about \$1,000 are current accounts payable; and about \$2,000 are committed to Field Trip expenses, leaving about \$1,000 "liquid" balance.

W. D. LYNCH

**NEWS BULLETIN**

P. O. Box 422  
 Jackson, Miss.



**Mississippi  
 Geological Society NEWS BULLETIN**