

Mississippi Geological Society

QUARTERLY NEWS BULLETIN

VOLUME IV

SEPTEMBER, 1956

NUMBER 1

Report From The President

The 1956-1957 year promises to be a productive and rewarding one for the society. During this year, the society plans to publish a new Oil Field Reference Report on the oil and gas fields in Mississippi and Alabama. The news bulletin staff hopes to compile a bibliography of geological publications in the southeastern states and to publish a condensed version of papers given at our meetings. With the co-operation of all the membership, the society can accomplish these aims.

Our Treasurer, Leroy Foll, has been transferred to Shreveport. The society will elect his successor at its first meeting, October 2. Please try to attend. We especially invite the newly arrived geologists to join at this time and take an active part in our Society.

Ben W. Ploch

Attention! Geologists

The Jackson Geophysical Society began its 1956-57 season September 19, 1956, with a dinner and business meeting followed by Mr. W. H. Knight's presentation of "Areas of Promise for Future Exploration in Mississippi and Alabama." A rather varied schedule of programs is anticipated for the remaining seven or eight monthly meetings. Several papers dealing with seismic problems of the Southeastern Area will be presented. In addition, some geological papers of interest and selected topics concerning other geophysical means of exploration including gravity and magnetics are anticipated.

The society normally meets during the third week of each month from September through May at the Robert E. Lee Hotel. Dinner is served at 6:30 P. M., followed by a business meeting and technical session.

GCAGS CONVENTION SLATED FOR SAN ANTONIO, TEXAS, OCTOBER 31 THROUGH NOVEMBER 2

The South Texas Geological Society, host society for the Sixth Annual Meeting of the G.C.A.G.S., has recently mailed invitations through the Local to the member societies. The tentative program promises to be one of the best ever assembled by the organization with thirty-four technical papers scheduled for presentation. Three separate field trips; a four-day trip to cover the Lower Cretaceous and Jurassic Rocks of Northeastern Mexico and two one-day trips into Central Texas; are planned for the termination of the meet, offering a wide diversification of area and stratigraphic section to be viewed.

Interesting sight seeing and social events are planned to keep the ladies busy throughout the convention.

Dick Morris (Schlumberger) can provide additional copies of the Program and reservation memorandums.

THANKS

We wish to express a vote of thanks and appreciation to Mr. Dick Morris of Schlumberger for the excellent presentation of his series of talks on Electric Log interpretation. They proved to be informative and worthwhile to all who attended.

First Society Meeting October 2

The Mississippi Geological Society will initiate its 1956-57 series of meetings at 7:30 p. m. October 2, 1956 at the American Legion Post #10 on Bullard Street, in West Jackson. Mr. Graham Moody, Chairman of the AAPG CSED Committee will give a short talk. Membership dues will be accepted and refreshments served.

Society Officers for the Coming Year



BEN PLOCH
President



EMIL MONSOUR
Vice President



Bland Bounds
Secretary



LEROY FOLL
Treasurer

NEWS BULLETIN STAFF

E. J. Henderson Editor
Amerada Petroleum Corp.

Jim Offenhiser Asst. Editor
Shell Oil Co.

Ed Minnah Reporter
Amerada Petroleum Corp.

Richard R. McLeod Reporter
Gulf Refining Co.

Committee Reports

Nomenclature

Discoveries have been named as follows:

Fort Adams

J. M. Harper, Jr., #1 L. S. Berry, et al, Sec. 23, T.1N., R.4W, Wilkinson County, IP 116 BOPD, 0/2% BS&W, 6/64" ck. TP 550#, 35.7° API, GOR 250:1 Completed 6-13-56.

Dixie

Calto-Gulmon #1 H. W. Carter, Sec. 44, T.5N., R.1E., Franklin County, IP Ppd BOPD, 39.5° API, GOR 250:1. Completed 7-23-56.

Butler Lake

J. S. Callon #P-1 Armstrong, Sec. 16, T.5N., R.3W., Adams County, IP 105 BOPD, 1/8" ck, 0.1% BS&W, TP 400#, 40° API, GOR 250:1. Completed 7-30-56.

Beaver Branch

Rimrock-Tidelands #1-A USA, Sec. 31, T.5N., R.1W., Adams County, IP 112 BOPD, 8/64" ck, TP 375#, 40° est, GOR 250:1. Completed 7-29-56.

Deerfield

Calto-Gulmon-Callon #1, Drane, Sec. 20, T.5N., R.1W., Adams County, IP Ppd 121 BOPD, Gr. 39.5°. Completed 8-31-56.

Oil Field Guidebook

The "committee" for this project is organizing assignments and setting up standards for the maps. It is hoped the guidebook will be available in mid-1957.

Program

It is hoped that Donald A. Myers (USGS, Denver, Colo.) will be able to attend an MGS meeting in the latter part of October to deliver his paper, "The Paleozoic Horseshoe Atoll of West Texas".

Jules Braunstein (Shell, New Orleans, La.) is to be guest speaker on November 23, to present his "Habitat of Oil in the Southeastern United States". An abstract of this paper was printed in Transactions of the Gulf Coast Association of Geological Societies, Vol V, p. 215, 1955.

Members will be notified of time and place of these and other meetings by postcard.

Pay your dues or you don't get a card!

Publications

The Society's publications recently have been given into the care of the gracious Mrs. Jessie Lee. They are advertised herein. Sales have been good; amounting to \$45.50 cash and \$69.65 in I O U's for the month of August.

Bowling

The Petroleum League began its fifth season on September 27. It is expected to function through May 9. Interested parties should note that the meetings are to be held this year on Thursday evenings rather than Friday. The games begin at 6:30 p. m.

This year's officers include: Howard Cotten (Stanolind) as President, Billy LeBay (Stanolind), Vice President and Don Bergman (California) as Secretary-treasurer.

Ten five-man teams have been fielded. They are: California, Cities Service, Continental, Ohio, Sinclair, Stanolind, Stanolind Strikers, Sun, United Gas and Union Producing.

Continental is the defending Team Champion, and Don Bergman having edged past Bill LeBay last year now holds the Individual Crown.

All team rosters are filled at present, but vacancies usually develop. Anyone interested in filling a vacated berth should contact one of the officers of the league.

Officers and Committees for 1956-57

Executive Council

Ben W. Ploch, President
Emil W. Monsour, Vice President
Bland D. Bounds, Secretary
Leroy Foll, Treasurer
Gilbert A. Talley, Past President
D. H. Bingham, Jr., Program Chairman

Entertainment Committee Nomenclature Committee

M. F. Kirby, Chairman
X. M. Frascogna
R. D. Sims
C. M. McDaniel, Jr.

G. K. Anderson, Chairman
D. M. Miller
Rudy Ewing
Emil Monsour
H. M. Morse
T. R. Russell

Projection Committee

Charles J. Mark, Chairman
L. D. Robbins
Jerry Sherman
R. E. Irving

Publications Committee

Emmett Adams, Chairman
W. H. Hollingsworth
Robert P. Middendorf
Charles G. Bilberry

Publicity Committee

R. L. Morris

News Bulletin

E. J. Henderson, Editor

Bowling

D. R. Bergman, Chairman

Boy Scout Merit Badge

George Thomas, Chairman

Preservation of Samples and Cores

Claude D. Smith, Chairman
A. F. Whatley
Hollis Collins
Frederick F. Mellen
Henry N. Toler
Elmer M. Rice
Emil Monsour
J. S. Attaya

Oil Field Reference Report

Verne L. Culbertson, Chairman
(To be announced)

Society Publications

A price list of MGS publications is presented for the benefit of those who wish to know what is in print.

Second Field Trip Guidebook

Jackson to Recent of Central Mississippi, February 1940, 9 pp., 3 illustrations, 9" x 11½". Out of print.

Third Field Trip Guidebook

Cretaceous of West-Central Alabama and Northeastern Mississippi, May 1940, 30 pp., 4 illustrations, 9" x 11½". Out of print.

Fourth Field Trip Guidebook

Northwest Alabama Paleozoics, December 1940, 26 pp., 4 illustration, 9" x 11½". Out of print.

Fifth Field Trip Guidebook

Eutaw-Tuscaloosa of Western Alabama, December 1945, 31 pp., 11 illustrations, 9" x 11". Price: \$3.50 plus \$0.25 postage; to students \$2.00 plus \$0.25 postage.

Sixth Field Trip Guidebook

Upper Eocene, Oligocene, and Lower Miocene of Central Mississippi, June 1948, 74 pp., 27 illustrations, 8½" x 11". Price: \$5.00 plus \$0.25 postage; to students plus \$0.25 postage.

Seventh Field Trip Guidebook

Pre-Cambrian and Paleozoic Rocks of Northern Alabama and South-Central Tennessee, August 1949, 89 pp., 30 illustrations, 8½" x 11". Price: \$4.00 plus \$0.25 postage, to students \$2.00 plus \$0.25 postage.

Eighth Field Trip Guidebook

Cretaceous of Mississippi and South Tennessee, October 1950, 55 pp., 6 illustrations, 8½" x 11". Price: \$3.50 plus \$0.25 postage; to students \$2.00 plus \$0.25 postage.

Ninth Field Trip Guidebook

Claiborne of Western Alabama and Eastern Mississippi, September 1952, 94 pp., illustrations, 8½" x 11". Price: \$4.50 plus \$0.25 postage; to students \$2.00 plus \$0.25 postage.

Tenth Field Trip Guidebook

Wilcox and Midway Groups, West-Central Alabama, September 1953, 60 pp., 22 illustrations, 8½" x 11". Price: \$4.00 plus \$0.25 postage; to students \$2.00 plus \$0.25 postage.

Eleventh Field Trip Guidebook

Paleozoic Rocks, Central Tennessee and Northwest Alabama, May 1954, 67 pp., 28 illustrations, 8½" x 11". Price: \$4.00 plus \$0.25 postage; to students \$2.00 plus \$0.25 postage.

Wilcox Oil Fields, Southern Mississippi and Adjacent Areas, July 1952, 164 pp., 61 illustrations, composite electric log (scale 1" = 100') showing Wilcox section presently productive, 9" x 11". Price: \$5.00 plus \$0.25 postage; to students \$2.00 plus \$0.25 postage.

General Geology of Mississippi by Tom McGlothlin, May 1943, reprinted March 1955, 62 pp., 16 illustrations, 7" x 9½". Price \$0.25 postage paid.

1955 Mississippi Geological Society Photodirectory, 17 pp., 9" x 11½". Price: \$0.50 postpaid.

Wilcox Composite Electric Log, July 1952, scale 2" = 100'. Price: 0.50 postpaid.

Geological Map of Mississippi, 1945, scale 1:500,000, 36" x 47". Price: \$3.25 postpaid.

Cretaceous Correlation Chart of Mississippi, February 1946, 26" x 18". Price: \$0.90 postpaid.

Tertiary Correlation Chart of Mississippi, March 1945, 23" x 21½". Price: \$0.90 postpaid.

Paleozoic Cross Section from South-Central Tennessee to Central Mississippi, March 1949, scale 1" = 300' (vertical), 60½" x 42". Price: \$3.00 postpaid.

Mesozoic Cross Section from Concordia Parish, Louisiana to Walton County, Florida, October 1949, scale 1" = 200' (vertical), 83½" x 42". Price: \$2.25 postpaid.

Black Warrior Basin Pre-Chester Correlation Sections, 1954, (1) west-east section from Independence County, Arkansas to Walker County, Alabama; (2) One north-south section from Giles County, Tennessee to Monroe County, Mississippi, scale 1" = 400' (vertical) 32" x 20", Price: \$4.25 per set, postpaid (no broken sets sold)

Black Warrior Basin Chester Correlation Sections, April 1953, (1) strike section — Lafayette County, Mississippi to Walker County, Alabama, (2) dip section — Clay County, Mississippi to Lauderdale County, Alabama, (3) Muldon Field and Vicinity, scale 1" = 400' (vertical) 31" x 20". Price: \$3.00 per set, postpaid (no broken sets sold).

Road Log, covering outcrops of the Vicksburg, Jackson, Claiborne and Wilcox Groups of Central Mississippi, April 1956, Price \$1.00

NOTE: A discount of 20% is allowed when the entire set of publications as listed above are purchased in a group. This discount does not apply to the student rate. Orders can be addressed to:

Mississippi Geological Society
P. O. Box 2253
Jackson, Mississippi

or

Mrs. Jessie Lee
1040 North Congress
Jackson, Mississippi

**FINANCIAL STATEMENT
JUNE 1 THROUGH AUGUST 31, 1956**

Distinguished Lecture Committee	\$ 38.00	\$	
Interest on Savings	(Posted June 29)		78.67
Membership Dues			2.00
Post Office Box (1 year)	12.00		
Reproductions & Mailing Tubes	17.13		
Publications Collections			
June			183.80
July			43.50
August			45.50
Stationery	36.51		
Stenographic Service	7.77		
Miscellaneous			
Bank Service Charge	1.14		
Flowers			
Ewing	10.35		
McCaulay	7.76		
Moving Secretary Files	5.00		
Net Profit:	\$217.81		
Cash Assets May 31, 1956			\$5,993.03
Cash Assets August 31, 1956			
Petty Cash	\$ 76.54		
Checking Account	810.64		
Savings Account	5,323.66		
	\$6,210.84		
Net Profit:	\$217.81		

Leroy Foll, Treasurer
Mississippi Geological Society

Personals

ARKANSAS FUEL

Jack Oyler, recent graduate of the University of Wichita, is now associated with the Jackson Office Geological staff.

CALIFORNIA

The following additions have recently been made to the Company's Geological Department here: **J. B. Carl**, **R L Duncan**, **J M Hornsby**, **F D Kelert** and **Helmer Magnuson**.

CARTER

Leroy Foll has been transferred to Shreveport, Louisiana, effective October 1st. **Donald Elrod** who will replace **Leroy** in Jackson comes from the General Office Geological staff, Tulsa, Oklahoma.

Lionell Brenneman, a June graduate of Florida State University is a new Geologist with the company here.

CITIES SERVICE

Perry Barnhardt has been transferred to Midland, Texas, in the capacity of District Exploration Geologist. **Jack Phillips**, from Lafayette, Louisiana, replaces him as District Geologist here.

GULF

Richard R McLeod received his release from the Army in July and has returned to work in the Jackson Office. Prior to entering the service **Dick** was located in Tallahassee, Florida.

Lowel B Plock has been transferred from Tallahassee, Florida, to the Jackson Office Geological staff.

L V Martin has been assigned to the newly formed Offshore Zone, and was promoted to Regional Geologist in the Morgan City, Louisiana Office.

J L Pruden, **R E Martin**, and **C H Johnston** recently completed their training program and have received assignments to the Laurel Production Zone Geological staff.

SHELL

Rhys J Davies, a Miami University of Ohio graduate is a new Paleontologist on Shell's staff.

William H Moore rejoined the Shell stratigraphic section after a year's military leave.

W. W. Ogden of Shell is scheduled for a six month assignment to the Hague early next year.

SINCLAIR

J L White, previously with Larco, is now associated with Sinclair in their local office.

STANOLIND

A T Teague, Jr. of Pan-Am Production Company has been appointed District Geologist here as a result of the recent merger of the two companies. **Gene Craft** recently joined the Geological staff from Pan-Am's Shreveport, Louisiana, office.

Charles D. Champlin also has joined the Geological staff here in July after receiving a degree from Oklahoma A & M. Although new here, he is an old Stanolind Employee, having been employed since 1951.

SUNRAY-MIDCONTINENT

Ralph Lauderback, previously located in Corpus Christi, Texas, is the new District Geologist here. He replaces **L. S. Finrock** who has been transferred to Tulsa, Oklahoma.

Coleman Fite has been transferred to San Antonio, Texas.

UNIVERSITY OF MISSISSIPPI

R. H. Shaver resigned from the Geological Department at Ole Miss to take a position with the Indiana Geological Survey. **John Q. Douglas** now is head of the University's department.

New Arrivals

Mr. and Mrs. Richard Woodams, a daughter, Mary Alice, born September 13, 1956

Mr. and Mrs. Don Bergmann, a son, Blaine, Born September 27, 1956
Mr. and Mrs. Jerry Sherman, a daughter, Sandra Joy, born August 9, 1956

Mr. and Mrs. Charles Mark, a son, James Charles, born July 12, 1956
Mr. and Mrs. Talmage Main, a daughter, Deborah Sue, born August 31, 1956

Mr. and Mrs. Robert Middendorf, a daughter, Marianne, born June 24, 1956

Mr. and Mrs. Arnold Leonard, a son, Steven Carl, born August 22, 1956

Mr. and Mrs. Gene Taylor, a daughter, Lynn Marie, born August 9, 1956

Mr. and Mrs. William J. Thornton, a son, William, born September 19, 1956

Mr. and Mrs. Howard Cotton, a son, Brian Mitchel, born August 30, 1956

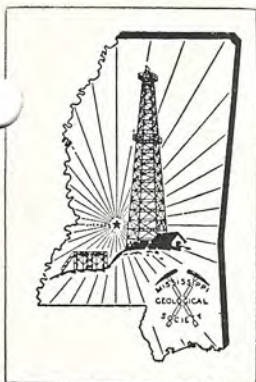
EDITORIAL

One of the first realizations of this writer after reading the announcement of the up coming GCAGS convention was that the MISSISSIPPI GEOLOGICAL SOCIETY was conspicuously absent. Not a single paper to be presented comes from this area. We realize that in some instances uncontrollable circumstances have prevented the presentation of a paper which the author desired to submit to the convention; however the cumulative effort of the society as a whole falls pitifully short of the minimum expected achievement. Is there no one of us qualified to originate and present a paper? Is there no one of us with sufficient background and understanding of the Geology of our area to stand up before the convention and tell those present of our problems and current achievements toward their solution? Surely this is not the case.

P. O. Box 2253
W. Jackson, Miss.



Mississippi
Geological Society QUARTERLY NEWS BULLETIN



Mississippi Geological Society

QUARTERLY NEWS BULLETIN

VOLUME IV

DECEMBER, 1956

NUMBER 2

Report From The President

The Society plans to publish a reference book of Mississippi and Alabama Cretaceous, Jurassic and Paleozoic oil and gas fields in the late Spring of 1957. A committee with Verne Culbertson as Chairman has been formed to steer the preparation of this volume. The committee in several meetings has selected a sample layout for the information to be presented on each field and the structure map of one field has been completed.

This project will require the enthusiastic cooperation of all our members and we urge all members to contribute their ideas and energies toward the successful conclusion of this important project.

Ben W. Ploch

Survey Announces Publication of Bulletin 81

The Mississippi Geological Survey has just issued Bulletin 81, Panola County Geology, by Franklin Earl Vestal, Senior Geologist. The survey of the county was originally started by the late Fred Cullen Smith, and the Geological Survey pays tribute to his work in the introduction to the volume. The stratigraphic geology of the outcropping formations, Tallahatta through Recent, is described as well as the historical and economic geology of the county.

At present, Bulletin 80, Geology of Benton County, by Tracy W. Lusk, is passing through the press. Still another bulletin, Bulletin 84 on Kemper County, by Richard J. Hughes, is being readied for the press.

Bulletin 81 can be obtained free by writing the Mississippi Geological Survey, University, Mississippi.

HAROLD WHITE ELECTED



Harold R. White, Independent, was elected Treasurer at the October 2nd meeting to fill the vacancy left when Leroy Foll was transferred to Shreveport.

THE OFFICERS
AND THE NEWS BULLETIN STAFF
OF THE MISSISSIPPI GEOLOGICAL SOCIETY
WISH YOU



A Merry Christmas

and

A Happy New Year

GCAGS Convention Well Attended

The fifth annual meeting of the Gulf Coast Association of Geological Societies was convened before a registered assemblage of 1148 Geologist, including 40 students, in San Antonio November 1st. Mr. Robert L. Kidd, president, Cities Service Oil Company brought the keynote address. In his speech entitled "A Management Look at the Geologist", he cautioned the Geologist not to become a victim of his own specialization in a field that is rapidly becoming more complex year by year. He stated that "the Geologist who expects to rise in the industry must learn to build his individual prospect recommendations on the broad business considerations of the whole enterprise in which he and his associates are engaged." Mr. Kidd called upon the Geologist to develop a greater awareness of economic factors and to make a more accurate prediction of probable pay thickness, productive area and acre foot yield on all drilling prospects, for in the final analysis cash expenditures for exploration must have economic justification.

There were 25 technical papers presented by the GCAGS and 8 under the auspices of the SEPM during the joint meeting.

On November 2nd all candidates for office in the AAPG were introduced to the convention. A short period of "free time for political addresses" was allowed each aspirant immediately following his introduction.

A well planned social program met with the same enthusiastic attendance as did the rest of the convention. The largest crowd of all, 1278, attended the cocktail party Naturally! Tortillas and Enchiladas became the order of the day for 650 conventioners at La Villita, the restored old spanish village in downtown San Antonio where a gigantic Mexican dinner was served Thursday night. Four hundred and twenty four men brought their wives with them and as a result over 800 people were at the dance to close the convention in grand style.

Official figures on the Field trip attendance are not yet available, however, the forty or more cars seen roaring along the Mexican highways evidenced that we Geologist are ever eager to expand our knowledge, and especially so when the route leads through beautiful scenic mountains in a foreign country.

NEWS BULLETIN STAFF

Richard R. McLeod	-----	Editor
		Gulf Refining Co.
Jim Offenhiser	-----	Asst. Editor
		Shell Oil Co.
Ed Minnahon	-----	Reporter
		Amerada Petroleum Corp.
William H. Moore	-----	Reported
		Shell Oil Co.

Committee Reports

Bowling Committee

The 1956-57 Petroleum League has thus far presented one of the most evenly balanced slates in the 5-year history of the league. After eight weeks' play, standings are still tightly bunched with only 12 points separating the first nine teams. Cities Service and Stanolind Strikers, both highly improved over last season, looked for several weeks as if they were determined to make a strictly two-team race of things. But, in the past three weeks some changes have been made and, on the night before this was written, Continental snuck past and now holds a slender two-points bulge over the erstwhile leaders. The 1955-56 champions, however, look like anything but a shoo-in, as they lead fifth-place United Gas by a mere six points.

Apart from the even balance between the teams, the outstanding feature about the league this season is the general improvement in individual performance. This has led to five teams currently averaging 690 or better. California, with a 745 average, tops three or four of the teams in the Commercial League, generally conceded to be the best league in town. There are 25 men averaging 140 or better at this point, and another 20 are over 130.

The individual average race has not yet settled down to a real grind, even though the lead has not changed hands in the last six weeks. California's Don Bergmann is currently on top with 171 and Bill LeBay of Stanolind Strikers is second with 166. Close behind are Malon Randall (California) 164, Ed Blanton (Sun) 163 and Andy Sestak (California) 161. Last year's Achievement Award winner, Bob Arrington of Continental, has so far exhibited another remarkable improvement and, at 152, is currently 14 pins ahead of his 1955-56 pace.

With six weeks of action remaining in the first half of the schedule, standings are:

TEAM	WON	LOST
Continental	40	24
Stanolind Strikers	38	26
Cities Service	38	26
Stanolind	36	28
United Gas	34	30
California	30	34
Sun	30	34
Sinclair	28	36
Union	28	36
Ohio	18	46

Society members interested in joining the league are urged to contact Don Bergmann, Secretary. All others are cordially invited to come out and watch the league perform and to see in action the brand-new, completely automatic AMF Pin Spotters, one of the very few installations of its kind in the entire South.

Entertainment:

CHARLES FRY, Seaboard, is announced as a member of this Committee by M. F. KIRBY, Chairman.

Nomenclature

Discoveries as announced by the Nomenclature Committee as follows:

North Lake Lucille

Disc. Well: Humble #H-1 Breaux, Sec. 10-T4N-R3W, Adams, Co. IP: Flwd 131 BOPD, 1/8" ck, TP 542#, GOR 218:1, Gr. 45.9°. Comp. 6-29-56.

Doloroso

Disc. Well: H. L. Rowley, Inc. #1 McCarstle, et al, Sec. 25-T4N-R2W, Wilkinson Co. IP: Flwd 111 BOPD, 1/8" ck, TP 475#, GOR 300:1, Gr. 36.5°. Comp. 10-25-56.

Reeves

Disc. Well: Jett Drlg. Co. & Robert Oil Co., Lisbony Unit #1, Sec. 26-T9N-R2W, Jefferson Co. IP: Flwd 72 BOPD, 1/8" ck, TP 300#, GOR 250:1, Gr. 41.9°. Comp. 10-15-56.

Laurel Hill

Disc. Well: Germany-Gulmon #B-1 Pierce Butler, Sec. 9-T5N-R3W, Adams, Co. IP: Flwd 124 BOPD, 3% BS&W, 1/8" ck, TP 285#, GOR 250:1, Gr. 44°. Comp. 11-6-56.

Boy Scout Merit Badge Committee:

GEORGE THOMAS, Chairman, announces the following additions to the Committee:

DALE MYERS	Stanolind
JAMES MICHAELS	Independent
JIM FURRH	Ohio

The Committee is at present making a study of material which would be of use in the program. Some tentative planning has been done on the subject of a field trip, but the dates and route to be followed have not been decided upon.

Publications:

The arrival of 50 copies of the Transactions of the Sixth Annual Convention of the GCAGS is announced. The price is quoted at \$3.00 for members and \$5.00 for non-members.

Sales for the month of September were \$34.26. Total collections were much better, being \$110.01, with the additional revenue coming from the collection of outstanding debts from previous months. An outstanding debit of only \$0.25 remained on September 30th.

Oil Field Reference Report

Membership of this newly formed committee is as follows:

Chairman	
VERN L. CULBERTSON	Lyle Cashion
MEMBERS	
CHARLES E. BROWN	Magnolia
CHARLES C. BARBER	Sinclair
ROY BENKE	Midstates
GENE DAVIS	Sinclair
A. E. BLANTON	Sun
GILBERT A. TALLEY	Lion
BEN W. PLOCH	Skelly
CLAUDE SMITH	Union Producing
RAY SCURLOCK	Gulf

The committee has been engaged in setting up the format for field data and contour maps and is presently preparing to make assignments of work. It is anticipated that work on the preparation of maps and data sheets will have already started by the publication date of this issue.

Coming Events

February	
24-28	AIME, Metallurgical and Petroleum Engineers Branch Annual Meeting, Hotels Jung and Roosevelt, New Orleans, Louisiana.
March	
20-22	API, Southern District Production Division Meeting, Washington-Youree and Captain Shreve Hotels, Shreveport, Louisiana.
12-13	Subsurface Geology Symposium, 5th Annual Conference, sponsored by University of Oklahoma, Norman, Oklahoma.
April	
1-4	AAPG, National Convention, Kiel Auditorium, St. Louis, Missouri.
26-27	Mississippi Academy of Sciences Meeting, Mississippi State College for Women, Columbus, Mississippi. Field trip Columbus to Jackson, Saturday A.M.
28-30	Independent Petroleum Association of America Mid-Term Meeting, Buena Vista Hotel, Biloxi, Mississippi.

Abstracts

In the future all available abstracts to papers presented before the Society will be printed in the News Bulletin as a "future reference" feature.

GEOLOGY OF URANIUM

DR. HOBART E. STOCKING

The nature of the uranium atom and its radioactivity is reviewed. Distribution of uranium in cosmic fragments and its relative abundance in the earth crust is summarized.

The course of uranium in magmatic differentiation is outlined and the metal is traced to specific pyrogenic minerals in various fractions of a parent magma and to a single intrusion.

Types of uranium deposits are summarized and examples of syngenetic (in veins, in marine sediments) and epigenetic deposits (in continental clastics, in coals, etc.) are described.

Vein deposits of uranium are cataloged as to temperature environment, alteration and geography of distribution.

Marine rocks bearing disseminated uranium are distinguished as to type, character and the significance of carbonaceous matter and phosphate in localizing uranium are discussed.

Deposits in clastics of continental origin are discussed according to geographic distribution and the changes in mineralogy resulting from weathering are tabulated.

Geologic phenomena which serve as criteria to mineralization are discussed on the basis of their applicability to the search for uranium.

THE HABITAT OF OIL IN THE EASTERN GULF COAST

JULES BRAUNSTEIN

The eastern Gulf Coast, comprising the states of Mississippi and Florida and those portions of Alabama and Georgia not included in the Appalachian Mountains and the Piedmont Plateau, covers about 166,000 square miles.

About 95,000 cubic miles of Paleozoic sediments are included in this area, occupying two widely separated basins. The better known of these is the Black Warrior Basin, of northeastern Mississippi and northwestern Alabama, in which the first hydrocarbon production of both of these states was found. The other, herein named the "Suwannee River Basin," lies in southern Georgia, northern Florida, and southeastern Alabama. It is nonproductive.

The most important basin within the eastern Gulf Coast from the standpoint of oil production is the Mississippi Salt Basin, which is continuous with a similar basin in Louisiana on the west, and extends into Alabama on the east. Minor production has been obtained from four of the 49 shallow salt domes proven by drilling in this basin. The major production from Mesozoic reservoirs in the province is derived from salt uplifted structures which flank the salt basin on the north and south.

Important Tertiary (Eocene Wilcox) production is largely confined to four counties in southwestern Mississippi. It is obtained principally from structurally modified stratigraphic traps.

Southern Florida, since early Cretaceous time at least, has been a shallow platform area characterized by carbonate and evaporite deposition with no important non carbonate clastics. Two fields have been discovered to date, producing from a highly organic limestone of Lower Cretaceous, Glen Rose age.

The present northeastern boundary of rich Miocene production in South Louisiana and the Louisiana tidelands is approximately coincident with the 10,000 foot isopach of Miocene sediments. Present information, which indicates rapid thinning of the Miocene and its gradation to a carbonate facies east and northeast of this line, suggests objectives for exploration in the Mississippi — Alabama — Florida coastal and offshore areas will be in sediments other than Miocene, on structures other than salt domes.

Auxiliary Party

The Women's Geological Auxiliary held a Christmas party at the Cedars of Lebanon Club on December 8th. Approximately 150 people attended the buffet supper and dance. Hycalog presented the ladies favours. Members in charge of the arrangements were: Dukey Humphras, Ann Devening, Nettie Clark, Charlotte Mark, Phyllis Jacobs, Genevieve Fitzgerald and Marguerite Bland.

From The Schools

As a new feature of the News Bulletin, a section has been devoted to news from the various Geological Departments of schools within the state.

Millsaps College

Millsaps College has a total of 143 students enrolled in Freshman Geology courses. As evidenced by the above relative high percentage of the school's total enrollment (891) it appears that Geology is one of the most popular "elective" subjects on the curriculum.

In addition to this large number of "Baby Geology students" as "Doc" Priddy refers to them, he has 25 Geology majors. Of those, two will graduate at the close of the present semester. They are, JOHN LOWERY and JOHN C. PHILLEY.

The Department will conduct its spring field trip March 29th through April 2nd, according to present plans. The trip will cover the Lower Cretaceous of the Dallas, Texas area, and will return via the Ouachata Mountains and Magnet Cove area of southern Arkansas.

University of Mississippi

The present enrollment of Geology Majors at the University is 84. They are broken down in the following manner:

	Freshmen	Sophomores	Juniors	Seniors	Total
B.S. in Geological Eng.	24	14	2	3	43
B.S. in Geology	4	12	9	8	33
B.A. in Geology	1	3	1	3	8
					84

One hundred and twenty-one students are taking Elementary Physical Geology.

The faculty now consists of one Professor, one Acting Associate Professor and one Assistant Professor.

University-Millsaps Center Offers Two Courses

The University-Millsaps Center will offer two Geology classes for the Spring Semester. A course in Historical Geology will meet on Monday night and a course on the Stratigraphy of North America will meet on Tuesday night. Registration will be January 28th, with classes beginning the second week in February.

Mississippi Academy of Science Calls For Papers

Professor W. B. JOHNSON, Chairman Earth Sciences Section, has extended an invitation to the members of the MSGS to contribute papers on individual oil fields or on the regional aspects of the Geology of Mississippi.

The Academy of Sciences meeting will be held April 26 and 27, 1957, at MSCW, located at Columbus, Mississippi.

On Saturday, April 27, a field trip will be conducted from Columbus to Jackson.

Professor Johnson can be contacted at the Millsaps College Geology Department.

Geophysical Society

On November 19, the monthly meeting of the Jackson Geophysical Society was held in the roof garden of the Robert E. Lee Hotel. Over 40 members and guests attended the dinner meeting and talk. The speaker on this occasion was Dr. Hal Jones of the "Houston Technical Laboratories" who spoke on the recent advancements in seismic instrumentation. The subject matter was ably covered by Dr. Jones. Principally, the magnetic playback features and amplifier filter designs were discussed, with the approach to possible future innovations in geophysical interpretation, that is, the automatic and mechanical "brain" replacing the preliminary computational drudgery.

No December meeting of the Geophysical Society will be held. The next meeting will be held in January. The Society meets the third Monday evening of each month. Those interested in attending any of the meetings are cordially invited to attend. Further information and advanced notices of the talks may be secured by calling or writing the Secretary of the Society, Mr. Leonard Ferrell of the Delta Exploration Company in Jackson, Mississippi.

Personals

SHELL

W. W. OGDEN will leave January 4th for a six month tour of Shell operations at the Hague.

SEABOARD

JACK GOODWIN of Lake City, Florida, has joined the Geological staff of Seaboard.

OHIO

MARK ZAPPI has been transferred from the California Division to the local office. He has had previous experience in Louisiana and South America.

STANOLIND

R. C. EDDINGTON is a recent addition to Stanolind's staff here. He is a graduate of the University of California.

TIDEWATER

H. L. EHRHARDT has been transferred from Houston. He will serve in the capacity of Geophysicist here.

GULF

MORTON M. PHILLIPS returned to work November 1st after completing his military service. He is assigned to the Jackson Zone Exploration Office here. He had been located in Shreveport, Louisiana, prior to entering the Army.

HUMBLE

ALBERT C. RAASCH, JR. has been transferred to Houston, Texas as Division Exploration Geologist of the Gulf Coast Division. He assumed his new duties Monday, November 26, 1956.

MISS ELEANOR T. CALDWELL, paleontologist, has been transferred from the Tallahassee, Florida district to the Hattiesburg, Mississippi district. She will arrive in Hattiesburg the first of December.

CHARLES R. (CHUCK) MOONEY will replace Mr. Raasch as Assistant District Geologist of the Hattiesburg district. He is being transferred from Houston and will arrive around December 15.

SUN

D. C. HARRELL, District Geologist, has been transferred to Caracas, Venezuela. MRS. HARRELL, who has served in the capacity of Paleontologist in this office, will accompany him; however, she will terminate her employment with the company.

EMIL MONSOUR has been promoted to District Geologist here to replace Mr. Harrell.

E. J. MATULICH has been transferred to San Antonio.

HAROLD PARKER has joined the staff here as a Geologist. Harold comes from McAllen, Texas.

A. E. BLANTON has returned to the Jackson office from San Antonio, and will be the Assistant District Geologist.

P. O. Box 2253
W. Jackson, Miss.



**Mississippi
Geological Society** QUARTERLY NEWS BULLETIN

AMERADA

ED MINIHAN, an Oklahoma A. & M. graduate, finished his training program and has joined the Geological staff here. W. P. TURNER has replaced him as scout.

CITIES SERVICE

JOHN LUKERT, a Kansas University graduate, has finished his training program and has joined the Geological staff. LOREN HART has replaced him as scout.

JOHN THOMAS, a Pennsylvania University graduate, has transferred to the Jackson office from Olney, Illinois. John will replace CLIFF SARTIN who has transferred to Odessa, Texas.

CALCO

RUSS J. ALEXANDER has transferred to the Jackson office from the Pensacola office.

CONOCO

DON G. LEITNER, an Oklahoma University graduate and trainee has been transferred to Jackson from the Los Angeles office.

TIDEWATER

M. C. LEITZ has joined the Geological staff. M. C. received his degree from SLI in Shreveport. He and his wife have two children.

ARKANSAS FUEL

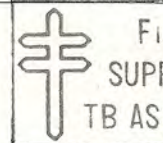
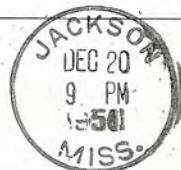
Congratulations to LUTHER B. SMITH and BETTY LUCAS. They were married November 16, 1956.

New Arrivals

Mr. and Mrs. Jimmy Dixon, a son, Jimmy, Jr., Nov. 9, 1956
Mr. and Mrs. R. H. Prescott, a daughter, Hope, Nov. 14, 1956
Mr. and Mrs. B. A. Corvin, a son, Thomas Joseph, Oct. 31, 1956
Mr. and Mrs. G. L. Watts, a daughter, Betty, Nov. 9, 1956
Mr. and Mrs. Armando Ricci, a daughter, Ellen, Nov. 15, 1956



One day as I sat musing,
sad and lonely and without a
friend, a voice came to me
from out of the gloom saying,
"Cheer up, things could be
worse." So I cheered up and
sure enough, things got worse.



Mr. John H. Marshall, Jr.
Magnolia Petroleum Company
P. O. Box 3671
West Jackson, Mississippi



Mississippi Geological Society

QUARTERLY NEWS BULLETIN

VOLUME IV

MARCH, 1957

NUMBER 3

President's Report

The Executive Committee met on March 5. At this meeting the Committee voted to contribute \$50.00 to the A. A. P. G. Research Fund.

The Committee also voted to sponsor a \$250.00 scholarship to be given to the senior high school winner of the Physiography section at the State Science Fair this spring. Our thought in making this contribution is that through it, we may interest the youth of Mississippi in our profession.

The G. C. A. G. S. is again asking for papers to be presented at the 1957 fall meeting of the Association. Any member with an urge to present a paper at this meeting may submit his idea to any member of the Executive Committee.

Emil Monsour was elected A. A. P. G. District Representative for the 1957-59 term.

Ben W. Ploch

G. C. A. G. S. Conference

X. M. FRASCOGNA, Representative from the M. G. S., attended the February Conference in New Orleans and reports some items of general interest about the 1957 Convention were covered. Primary interest is to be centered upon the offshore province of the Gulf Coast. Present plans for entertainment include a cocktail party, smoker, and dance. The suggestion was made that Service Companies not be allowed to throw suite parties, but would instead coordinate and contribute to a centrally located bar. Registration for the convention will be Wednesday, November 6. No field trips have been planned.

Special Train Planned For A. A. P. G. Convention

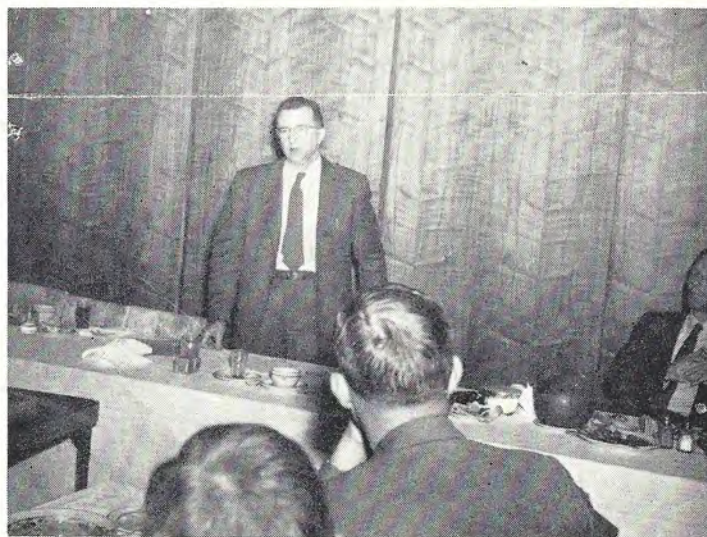
The New Orleans Geological Society is planning to have one or more special coaches on the "City of New Orleans" on March 31 for the A. A. P. G. Convention in St. Louis. Anyone interested in boarding the "Special" at Jackson should contact Emil Monsour, Sun Oil Company, Jackson, Mississippi. The round trip fare from Jackson is \$28.62, including tax.

Mississippi Academy of Science To Meet April 26, 27

The annual meeting of the Mississippi Academy of Science will be held on the campus of Mississippi College for Women, Columbus, Mississippi, April 26 and 27. Papers will be presented before the Earth Science Section, beginning at 1:45 P.M., the 26th. The program for the 27th will consist of a field trip in the vicinity of Columbus where outcrops of the Tuscaloosa, Eutaw, and Selma group will be seen. Eocene rock units will be seen on the return trip to Jackson. This trip offers an excellent opportunity for newcomers to our area to acquaint themselves with outcrop sections of principal producing horizons of Mississippi.

Those interested should contact:

Professor Wendell B. Johnson
Department of Geology
Millsaps College
Jackson 10, Mississippi



Mr. Robert H. Dott, Executive Director of the A. A. P. G., is pictured above as he presented his paper entitled, "The A. A. P. G. and How it Functions", to the Society February 28. In addition to outlining the history and organizational set-up of the A. A. P. G., Mr. Dott announced three current projects; a symposium, The Habitat of Oil, 1200 to 1400 pages, the ten year index to publications of the A. A. P. G. 1945 to 1956, which will be out this fall, and the revision and reprinting of the Association's Tectonic Map of the United States.

Society Spring Dance - May 10

The annual Spring Dance will be held in the Crown-Cornet Room at the Hotel Edwards May 10. Music for the occasion will be furnished by Jerry Lane and his orchestra. The schedule of events for the evening are as follows: refreshments from seven o'clock until eight, dinner from eight o'clock until nine, and dancing from nine o'clock until "till". Tickets will be four dollars per person.

NEWS BULLETIN STAFF

Richard R. McLeod ----- Editor
Gulf Refining Co.

Jim Offenhiser ----- Asst. Editor
Shell Oil Co.

Ed Minahan ----- Reporter
Amerada Petroleum Corp.

William H. Moore ----- Reporter
Shell Oil Co.

Committee Reports

Nomenclature Committee

Discoveries as announced by the Nomenclature Committee are as follows:

VALLEY PARK — Amerada-Reese-Vaughey No. 1 Delta Wildlife, Section 5, Township 9 North, Range 6 West, Issaquena County. Pumped at rate of 114 barrels oil per day. 0.3% BS&W. Gravity 22 degrees API. Completed November 23, 1956.

SPRING POND — Gauthier & Heard (Originally Sunray-Midcontinent) No. 1 Frank Jenkins, Section 12, Township 8 North, Range 3 West, Adams County. Pumped 65 barrels oil per day. 85% BS&W. Gravity 42.7 degrees API. Completed December 19, 1956.

RALEIGH FIELD — The California Company No. 1 Central Oil Company "5", Section 33, Township 2 North, Range 7 East, Smith County. Flowed 266 barrels of oil per day plus 0.4% BS&W, 10/64 inch choke. TP 1124#. GOR 564:1. Gravity 41.8 degrees API. Completed January 4, 1957.

ROSE HILL FIELD — Rimrock-Tidelands No. 1-A Baggs, Section 47, Township 4 North, Range 3 West, Wilkinson County. Flowed 100 barrels oil per day plus 0.1% BS&W, 12/64 inch choke. TP 95#. GOR 100:1. Gravity 36 degrees API. Completed January 11, 1957.

MARTINVILLE FIELD — Central Oil Company No. 1 Charles Jennings, Section 23, Township 2 North, Range 5 East, Simpson County. Flowed 246 barrels oil per day, 9/64 inch choke. TP 1800#. GOR 1200:1. Gravity 45.3 degrees API. Completed February 5, 1957.

GITANO FIELD — Gulf Oil Corporation No. 1 Lee Welch et al Unit, Section 9, Township 9 North, Range 13 West, Jones County. Flowed 217 barrels oil per day plus 0.2% BS&W, 13/64 inch choke. TP 600#. GOR 200:1. Gravity 43 degrees API. Completed February 26, 1957.

Publications Committee

The Publications Committee reports total sales of \$363.53 for the months of October, November, December, and January. Of this total, \$173.01 remains outstanding.

Boy Scout Committee

The Boy Scout Committee of the Mississippi Geological Society plans to present the Merit Badge Series on Geology, beginning March 20, 1957, in the Capers Room of the Parish House, St. Andrews Episcopal Church.

Five Wednesday night meetings will be held from March 20 to April 17, and a field trip will be conducted on one Saturday in April.

Twenty-five to thirty explorer scouts are expected to participate in the program. The Committee is comprised of George T. Thomas, Chairman, Ed Blanton, Dale Myers, and Jim Furrh.

Bowling Committee

With the second half of 1956-57 competition well under way no clear-cut leader has as yet emerged from the pack, although at this point it looks like Stanolind is the team to beat. Off to a bad start in this half, the first-half champions are now slowly edging toward the top. With nine weeks to go, there is still plenty of time for their effort to pay off. If it does, it will be the first time in the five-year history of the league that one team has won all the way. The nearest anyone has ever come to a sweep was in 1953-54 when California won two of the three rounds played that season and then went on to take the play-off honors.

Individual averages have more or less held steady since the last report. Don Bergmann of California still leads although his average has slumped considerably in recent weeks to 166. With Bill LeBay having been transferred to Venezuela, Ed Blanton of Sun has taken over the runner-up spot and, with 165, presently stands a good chance of becoming the first to Break Bergmann's four-year hold on the top rung. Others in the upper echelon include Stanolind's "Big Three," Dale Myers, Joe Hildebrand and Howard Cotton, Bob Arrington of Continental and Eric Talmage of Sinclair. Arrington, currently 16 pins ahead of his 1955-56 average, well may be the first individual ever to cop the league's Achievement Award two years in a row. His main competition in his effort is John Lukert of Cities Service, up 18 pins and J. A. Hall (Sinclair) and Charley Byrd (Sun), up 13 pins apiece. B. Johnson (United Gas) and Ed Blanton are not to be counted out either, as they both show a 12-pin improvement at this time.

TEAM	WON	LOST
Continental	32	16
Sinclair	32	16
Stanolind	29	19
Ohio	27	21
Sun	26	22
Union	24	24
Stanolind Strikers	20	28
United Gas	20	28
California	18	30
Cities Service	12	36

Preservation of Cores And Samples

Core Laboratories, Inc. has printed the list of repositories of samples and cores, as compiled by the A. A. P. G. Committee on Preservation of Cores and Samples. The list contains private, commercial and public collections. Initial distribution of the list will be made at the National A. A. P. G. Convention in St. Louis.

Geophysical Society Activities

Recent meetings of the Jackson Geophysical Society, held monthly in the Roof Garden of the Robert E. Lee Hotel, have included talks on Seismic Operations and Procedures. On January 21, 1957, Dr. A. W. Musgrave, of the Magnolia Company, presented a paper on "the Directivity of Elongated Charges." Slides of records in problem areas, one of which happened to be near Terry, Mississippi, were shown. Elongated charges in some areas provide helpful in minimizing ghosts which are unwanted multiples generated by surface re-echoes.

On February 18, Mr. Glen M. Conklin of the Sun Oil Company, presented a paper on the "Magnetic Record Section Presentation of Seismic Data." A playback feature of correcting and reducing seismic data to desk-top size was explained, and samples of seismic cross-sections demonstrated. The particular advantage in this method of seismic plot presentation is that the wave form of the seismic events is completely retained, yet correctly placed on the cross-section profile strips. The seismic events were beautifully colored on the cross-sections of the many and varied regional examples. A very effective demonstration resulted.

Mr. Paul Lyons of the Sinclair Oil and Gas Company delivered a talk on the "Geology and Geophysics of the Gulf of Mexico."

Abstracts

Relationships of Paleozoic Structures To Large Anomalies of Coastal Element of Eastern North America

GROVER E. MURRAY

Studies of the coastal element of eastern North America indicate that large structural anomalies have been influenced, or even controlled, by Paleozoic and older structures. Initially, in late Permian to Jurassic times, downfaulting or downflexing of the continental margins, back of and generally parallel to the Paleozoic orogenic belts, effected unstable areas where sediments of geosynclinal proportions accumulated in the Mesozoic and Cenozoic. In the United States, certain negative areas, for example, Rio Grande Syncline, oppose salients in the Appalachian and Ouachita orogenic belts. Some positive areas, as Cape Fear arch, border recesses in the belts. Others appear to be related to roughly parallel orogenic belts or to cut across Paleozoic trends. Similar, but opposite relationships, exist between Sierra Madre Oriental folds and larger structures of the coastal element in Mexico. It is suggested that they were positioned by salients and recesses in the now mostly covered Paleozoic orogenic belt and that larger, modern, structural anomalies may be used to interpret, in a very general way, the patterns of the Paleozoic structures. Offsets in Paleozoic belts and alignments of geologic features, as at south end of Coahuila Peninsula, and along Champlain-Hudson valleys, suggest basement fracturing which controlled subsequent structures.

The A. A. P. G. And How It Functions

ROBERT H. DOTT

The American Association of Petroleum Geologists was founded forty years ago, in February, 1917.

The use of geology in the search for oil in the Southwestern United States began about 1911, resulting in several discoveries, of which the Cushing, Oklahoma field (March 1912) was most important. The great influx of geologists came in 1915-16, as a result of changes in regulations concerning lands in the Osage Indian Nation, northeastern Oklahoma, which opened for general leasing some highly desirable tracts. Some of the geologists were located in cities and towns in, and bordering "the Osage", and many were scattered in camps.

Being rather isolated and with little contact, many felt the need for meetings to provide exchanges of ideas. On October 2, 1915, 27 geologists gathered for dinner in Tulsa, as guests of J. Elmer Thomas, and agreed that an association should be formed. Earlier the same year, Charles H. Taylor, head of the Department of Geology at the University of Oklahoma, and E. DeGlover, chief Geologist of the Mexican Eagle Oil Company, who was visiting in Norman, decided that steps should be taken to form a geological society in the Southwest. At the Tulsa dinner, Taylor proposed to issue invitations for a meeting early in 1916. About 50 geologists from Oklahoma, Kansas, and Texas convened in Norman January 7-8, 1916, and voted to meet the following year in Tulsa, and, at that time, to form an organization.

The Southwestern Association of Petroleum Geologists came into being on February 10, 1917, at Kendall College (now University of Tulsa), but a Constitution was not adopted until the next meeting, in Oklahoma City, February 16, 1918, at which time the name was changed to American Association of Petroleum Geologists.

Although the Constitution and By-Laws of the A.A.P.G. have been amended many times, the objectives and basic organization have changed very little. Principal objectives and functions are: 1. To publish a **Bulletin** and special publications containing scientific articles on geology, especially as it relates to petroleum and natural gas; 2. To hold conventions for exchange of ideas through presentation of scientific papers; 3. To foster the spirit of scientific research throughout the membership, by work of committees.

Article IV of the original Constitution provided for: President, Vice-President, Secretary-Treasurer, and Editor; these four to constitute the Executive Committee. The Retiring President was added to the Executive Committee in 1921. The Executive Committee is the manager of the Association's affairs and funds, under authority delegated by the Members through the Constitution and By-Laws. In 1926, the Executive Committee was empowered and instructed to establish a business headquarters, and to employ a full-time business manager and staff, to conduct the routine business of the Association.

There are three distinct, though not all-embracing, groupings of the membership:

1. **Districts.** — These are more or less geographic groupings of **Active** members, formed for the purpose of electing District Representatives.

2. **Regional Sections.** — Pacific, Eastern, and Rocky Mountain. Section membership is restricted to A.A.P.G. members, and includes members of all categories residing in the respective regions. Sections function as local and regional societies.

In addition, 42 local, independent societies are affiliated with A.A.P.G., and the Association is affiliated with, or belongs to, three national societies (A.A.A.S., N.R.C., and A.G.I.).

The Association's program is carried out by representatives to other societies, and Commissioners on inter-society commissions; trustees; and regular and special committees. The Business Committee is the largest, and is composed of a Chairman and Vice-Chairman, District Representatives, Division Representatives, officers, officers-elect, and five members at large. This committee acts as an advisory body to the Executive Committee and to the Association, and must approve all amendments to the Constitution and By-Laws, and other business, before they are presented to the membership.

In addition to the Business Committee, Article VI of the By-Laws lists ten standing committees and one board of trustees. Appointments to standing committees are for a period of three years, one-third retiring at the end of each annual meeting. The By-laws also provide for a nominating committee, a ballot committee, and a resolutions committee, members of which are appointed annually.

Special committees are created by the Executive Committee for special projects, and are discharged when the assignments are completed, or, if a project has proved to be of continuing importance, a special committee may become standing by amendment to the By-Laws.

The Editor is assisted by a board of Associate Editors, most of whom function on a regional basis in screening papers submitted for publication in the **Bulletin**. The Committee for Publication is responsible for the group of papers on regional development that are published annually in the June and July issues of the **Bulletin**. Special editors handle special publications.

The present size (more than 13,000), stature, and prestige of the A.A.P.G. is due in very large measure to the unselfish devotion of the members who contribute papers for our publications, who work on committees, including convention committees, and who serve as associate and special editors.

From The Schools:

MISSISSIPPI SOUTHERN COLLEGE

The Department of Geology had added two new staff members from the current year, Dr. J. F. L. Connel, Associate Professor of Geology (B.S., L.S.U.; M.S. and Ph.D., University of Oklahoma) and Mr. H. J. Nyholm, Instructor in Geology (B.S., University of Alabama, Graduate study, University of Pennsylvania). The Department is still looking for another Ph. D staff member for 1957-58.

Presently there are 111 student majors in Geology at Southern.

The summer field camp will meet at a new and expected permanent location near Spring City, Tennessee, for six weeks, June 4 through July 15, inclusive. The quota of thirty students has already been filled.

UNIVERSITY OF MISSISSIPPI

The Department of Geology at Ole Miss is offering eight Geology courses this semester. They are: Historical Geology (Elementary), Mineralogy and Petrography, Sedimentation, Micropaleontology-Foraminifera, Petroleum Geology, Petroleum Production Methods and Equipment, History of Geology, and Seminar.

MILLSAPS COLLEGE

The following courses at the Gulf Coast Research Laboratory, Ocean Springs (Biloxi) Mississippi, are announced by Dr. R. R. Priddy:

Geology 341 — Marine Geology

A lecture and laboratory introduction to the general principles of the subject, with special reference to the Gulf of Mexico. Text — Marine Geology by Kuenen — July through August 3.

Geology 441 or 461 — Problems in Marine Sedimentation

Supervised research for advanced students. Individual and group problems. — August 5 through August 24.

Both courses will be taught by Dr. Priddy.

Personnels

LION

GILBERT TALLEY has been transferred to Shreveport, where he will serve in the capacity of District Geologist for that area.
 W. B. STINSON has been promoted to District Geologist here to fill the vacancy left by Gilbert Talley.

SUNRAY-MIDCONTINENT

DEAN MILLER has resigned to take a position with SOUTHERN STATES PETROLEUM. Dean will continue to live in Jackson.

SUN

D. C. HARREL has resigned following his transfer to Venezuela and has returned to Jackson where he has opened offices as a consultant.

HUMBLE

C. VICTOR WINTER, Associate Geologist, was transferred as of March 1st to the Potash District as District Production Geologist.
 ARTHUR L. CLARDY, JR. was transferred from New Orleans Production Section to subsurface to replace Mr. Winter.
 ROBERT E. BEARNTH, Geophysics and Seismograph Computer, was transferred from East Texas to Hattiesburg.
 THOMAS G. BRUNER, Seismograph Computer, was transferred into the Hattiesburg office from Lucedale, Mississippi.

GULF

As a result of a new rotation program designed to give geological employees a broader background of experience, three geologists have been transferred within the Jackson Zone recently. ARTHUR WHATLEY has moved into subsurface geology and now works out of the Laurel office, while J. L. PRUDEN and OTTO SYKES have transferred from Laurel into regional work at Jackson.
 CLAUDE PHILLIPS, after completing his orientation phase has been assigned to the Laurel office.
 CHARLES BILBERRY is on three months temporary duty with the geophysical section in Jackson.

SINCLAIR

FELIX H. WEBSTER has transferred to the Jackson office from New Orleans.

CONTINENTAL

DON BROWN, an O. U. graduate, has finished his training and has been assigned here.

ARKANSAS FUEL

Arkansas Fuel now calls the 14th floor of the Standard Life Building home. They moved from the 16th.

CALIFORNIA

JACK PORTER has transferred to the Jackson office from Pensacola.
 BOB BRONSON has transferred from Natchez to Jackson.
 DENNY LUCAS has transferred here from New Orleans.

WATERWAYS EXPERIMENT STATION

Congratulations to WILBUR LUKE AND CAROLYN CLAYSTON on their recent marriage.

P. O. Box 2253
 W. Jackson, Miss.



Mr. John Marshall, Jr.
 P. O. Box 3671
 Jackson, Miss.

Mississippi Geological Society

New Arrivals

MR. AND MRS. DAVE ROBBINS, a daughter, Laura, born January, 1957. (Dave is on military leave from Ohio).
 MR. AND MRS. HAROLD D. BAKER, a son, Adolphus Bowers, born January 28, 1957.
 MR. AND MRS. C. VICTOR WINTER, a son, Frederick Burton, born February 16, 1957.
 MR. AND MRS. JIM WOMACK, a son, Jim Frank, born January 23, 1957.
 MR. AND MRS. DUDLEY SMITH, a daughter, Cynthia, born January 18, 1957.
 MR. AND MRS. F. X. BLAND, a son, Lawrence Cartier, born February 14, 1957.
 MR. AND MRS. CURT HUMPHRIES, a daughter, Margaret Ann, born January 17, 1957.
 MR. AND MRS. DUNCAN GOLDTHWAITE, a daughter, Madelyn Jack, born January 25, 1957.

CATCHING SAMPLES

We hear that some people in Cities Service are having chicken-pox Arkansas Fuel being justly proud of their new glass door Amerada having the brightest company cars in town and Union Producing is jealous Union Producing is thinking about adding a Medical Doctor to their staff Frank Bland being accused of being a spaceologist California Company's basket ball team being wiped out Sunray's has an employee called Limp-A-Long Hannigan John Lukert and Larry Boland calling each other "the Barrel" and "The Blimp" John Player wondering if anyone wants to buy some salt Carter Oil Company having no smiles for anyone Gulf's Geologists all thinking about house trailers Charles Bilberry is very proficient at hustling jugs with the "Doodle-buggers."

Coming Events

- March**
 20 - 22 American Petroleum Institute, Southern District Production Division meeting. Washington-Youree and Captain Shreve Hotels, Shreveport, Louisiana.
- APRIL**
 1 - 4 American Association of Petroleum Geologists, Society of Economic Paleontologists and Mineralogists, National Convention, Kiel Auditorium, St. Louis.
 16 - 18 National Petroleum Association, Fifty-fourth Semi-Annual Meeting, Cleveland.
 26 - 27 Mississippi Academy of Sciences Meeting, Mississippi College for Women, Columbus, Mississippi. Field trip Columbus to Jackson Saturday.
 28 - 30 Independent Petroleum Association of America, Mid-year meeting, Buena Vista Hotel, Biloxi, Mississippi.
- May**
 6 - 8 American Geophysical Union, Thirty-eight Annual Meeting, National Academy of Sciences, Washington, D. C.

