

Mississippi Geological Society

QUARTERLY NEWS BULLETIN

VOLUME III

SEPTEMBER, 1955

NUMBER 1

G.C.A.G.S. Convention Highlight of October

Biloxi, Mississippi, will be the scene of the fifth annual convention of the Gulf Coast Association of Geological Societies. The Mississippi Geological Society is the host Society for this convention. The Baton Rouge and Southeastern Societies are assisting with plans for the meeting. Members of the Gulf Coast Section of the Society of Economic Paleontologists and Mineralogists have been invited to take part in the meeting.

Technical programs are planned for Thursday and Friday, October 13th and 14th. A. E. Blanton, president of the G.C.A.G.S. will open the sessions with the president's report. The welcoming address will be given by Gilbert A. Talley, president of the host society. Technical sessions will be held in the Hurricane Room of the Buena Vista Hotel in Biloxi.

Entertainment planned for the meeting includes a party to begin activities on Wednesday, October 12th. A Seafood Jamboree heads Thursday social activities and a semi-formal dance on Friday night brings to a climax the entertainment program. For the ladies attending the meeting a brunch, a boat trip along the coast, and a buffet luncheon have been planned.

Robert D. Sprague, Sinclair, is general chairman for the meeting. Other committee chairmen are: A. E. Blanton, Sun, program; Claude Smith, Union Producing, entertainment; Gerald K. Anderson, Ohio, projection equipment; W. J. Nugent, Honolulu, housing; X. M. Frascogna, Stanolind, advertising; Less Reynolds, Schlumberger of Opelousas, publicity; R. L. Morris, Schlumberger of Jackson, registration; E. L. Russell, California, of Pensacola, geological exhibits; and Robert H. Shaver of University, Mississippi, S.E.P.M. program.

Twenhofel Slated For November Meeting

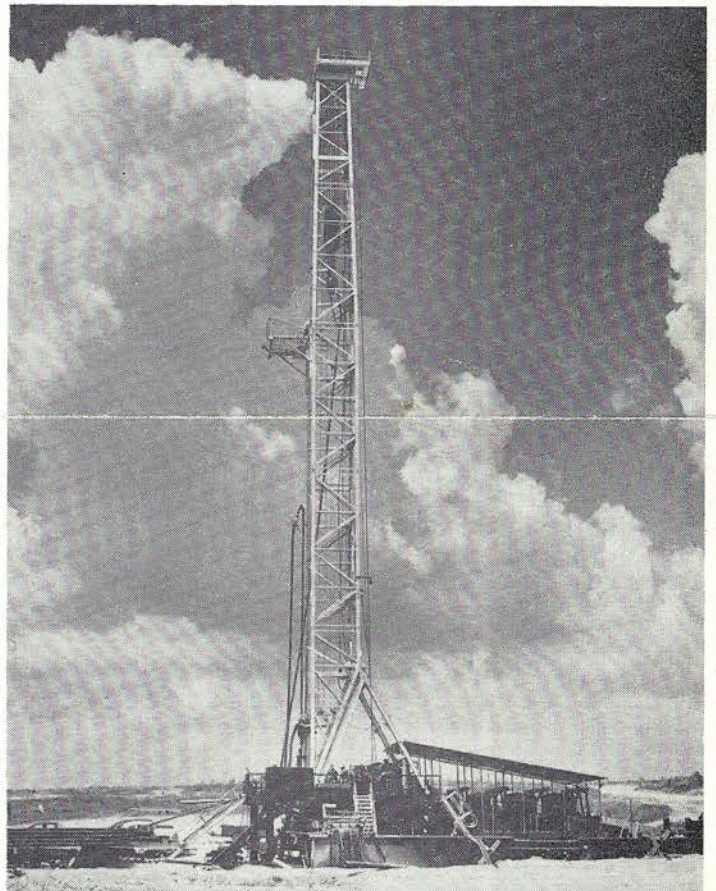
Leroy Foll, program chairman, has announced that Dr. W. H. Twenhofel, author of "Principles of Sedimentation" and co-author of "Invertebrate Paleontology", will appear before the Society in November.

G.C.A.G.S. Exhibit Committee

The G.C.A.G.S. Exhibit Committee plans to maintain a booth for the purpose of selling M.G.S. publications. In order to keep this booth open during convention hours, the committee needs 20 members who are willing to spend 2 hours in the booth. The selling of publications is an important part of the overall society program and those wishing to volunteer should contact Ben Ploch, Skelly Oil Company, Committee Chairman.

First Meeting September 27

On Tuesday the 27th of September at 7:00 P. M., the Mississippi Geological Society will hold its opening meeting of the 1955-1956 year. This meeting will be held at the Mississippi Valley Gas Company lodge. A primarily social evening with refreshments is planned following a short business session. The location of the Mississippi Valley Gas Company lodge is 7½ miles east of the cloverleaf on Highway 80.



On its first location is Trans-Tex Drilling Company's new 110 National Rig. The test is Union Producing Company No. 1 Simmons near Learned in Hinds County, Mississippi. (Picture courtesy of Dixie Advertisers)

Mississippi Geological Society Executive Committee

| | | |
|-------------------|--------------------|------------------|
| Gilbert A. Talley | Lion Oil Company | President |
| E. H. Rainwater | Shell Oil Company | Vice President |
| Emil Monsour | Sun Oil Company | Treasurer |
| G. K. Anderson | Ohio Oil Company | Secretary |
| Leroy Foll | Carter Oil Company | Program Chairman |
| A. E. Blanton | Sun Oil Company | Past President |

President Announces Committee Assignments

Gilbert A. Talley, president has announced the following committee chairmen and their members for the coming year.

REGULAR COMMITTEES

| | |
|---|--|
| A.A.P.G. J. D. Nunnally, Chairman (SE District Representative) D. C. Harrell Wilbur H. Knight Henry N. Toler | PROGRAM COMMITTEE Leroy Foll, Chairman Perry E. Barnhart W. J. Nugent Verne L. Culbertson |
| ENTERTAINMENT COMMITTEE H. L. Francis, Chairman B. D. Bounds Wynne Adams Glenn Clark | PROJECTION COMMITTEE Paul E. Fitzgerald, Chairman J. B. Furrh Donald C. Gifford Charles J. Mark |
| NOMENCLATURE COMMITTEE L. J. Finrock, Chairman E. H. Rainwater R. V. Ewing Ray E. Stevens H. M. Morse Carl R. Coleman | PUBLICATIONS COMMITTEE R. T. Violette, Chairman W. E. Taylor Robert P. Fietz LeRoy B. Scott, Jr. |
| | PUBLICITY COMMITTEE R. L. Morris, Chairman George R. White |

SPECIAL COMMITTEES

| | |
|---|---|
| G.C.A.G.S. A. E. Blanton, District Representative G. A. Talley, Alternate Paul L. Applin, Editor Xavier M. Frascogna, Advertising Mgr. | PRESERVATION OF CORES AND SAMPLES Claude, D. Smith, Chairman Dr. R. R. Priddy Elmer M. Rice E. H. Rainwater Emil Monsour Mrs. Oleta Harrell Miss Winnie McGlamery |
| CENOZOIC COMMITTEE E. H. Rainwater, Chairman Charles C. Barber, Vice Chairman Allan K. Dray, Jr. Robert R. McConnell Dr. R. R. Priddy | BOY SCOUT MERIT BADGE Earl S. Newcomer, Chairman M. D. Myers Harold E. Karges A. E. Blanton George R. McCauley W. E. Taylor |
| QUARTERLY NEWS BULLETIN W. E. Taylor, Editor Dean M. Miller, Asst. Editor W. Fleming Browning Donald C. Devening John H. Marshall J. B. Furrh | G.C.A.G.S. EXHIBIT COMMITTEE Ben W. Ploch, Chairman To Be Announced |
| BOWLING Donald R. Bergmann, Chairman | |

October Meeting To Feature Bolton Field

Scheduled for October 6th is a dinner meeting at the Heidelberg Hotel. A paper on Bolton Field will be presented by Rudy Ewing and Emil Monsour. The dinner will begin at 7:00 P. M. in the Victory Foyer.

Millsaps Announces Geology Courses For Fall Semester

Dr. Richard R. Priddy of Millsaps college will offer a three hour course in Physiography of Eastern United States each Monday and Wednesday nights during the autumn semester from September 12 to about January 15. Classes will be held for two hours each night, from 7-9. Laboratory and lectures will not be separated. There will be two Saturday field trips, each taking the places of two class meetings.

Although the course is designed for second year work in geology, Geophysicists, Landmen, and Geological Secretaries can take it on the strength of their experience. The fee for all will be \$45.00 (\$39.00 tuition and \$6.00 laboratory fee). Those interested in credit must take all tests and the final examination. Those who wish to audit the course need not take tests and examination.

Registration and the first class meeting will be Monday September 12. The text will be Fenneman's "Physiography of Eastern United States," a reference found in all Geological libraries. New copies will be on sale during the registration for about \$9.00. All maps and supplementary material will be furnished.

For those who are interested in elementary Geology (Physical Geology) contact the University—Millsaps Center. The course will probably be scheduled Tuesday and Thursday nights, from 7-9.

A.A.P.G. Announces 1956 Officer Nominations

CAREY CRONEIS, Rice Institute, Houston, Texas, and THEODORE A. LINK, Link, Downing, and Cooke, Ltd., Toronto, Ontario, are announced today by A.A.P.G. president G. M. KNEBEL as candidates for Association presidency during 1956-57. Other officer nominees revealed in the report of the A.A.P.G. nominating committee are: for vice-president, BEN H. PARKER, Frontier Refining Company, Denver, Colorado, and WALTER H. SPEARS, Union Producing Company, Shreveport, Louisiana; for secretary-treasurer, WILLIAM A. WALDSCHMIDT, consultant, Midland, Texas; for editor, WILLIAM C. KRUMBEIN, Northwestern University, Evanston, Illinois.

Additional nominations for any office may be made by submitting to A.A.P.G. headquarters in Tulsa, Oklahoma, not later than November 15, 1955, a written petition bearing the signatures of 50 or more Association members, as pointed out by president Knebel. Election is by secret ballot mailed to members throughout the world. The ballots will be counted and the winners announced early next February. Successful candidates will take office on April 26, 1956, at the close of the 41st annual meeting of the Association, to be held at The Conrad Hilton Hotel, Chicago, Illinois.

Chairman of the 1955 A.A.P.G. nominating committee is ROBERT E. RETTGER, Sun Oil Company, Dallas, Texas. Other members include N. WOOD BASS, U. S. Geological Survey, Denver, Colorado, LON D. CARTWRIGHT, JR., Cyprus Oil Company, Los Angeles, California, HAROLD T. MORLEY, Stanolind Oil and Gas Company, Tulsa, Oklahoma, and WARREN B. WEEKS, Phillips Petroleum Company, Bartlesville, Oklahoma.

Present officers of the Association include president G. M. Knebel, Standard Oil Company (New Jersey), New York, New York; vice-president Horace D. Thomas, University of Wyoming, Laramie, Wyoming; secretary-treasurer W. A. Waldschmidt, Midland, Texas; and editor W. C. Krumbein, Evanston, Illinois. Both Waldschmidt and Krumbein have been nominated for a second term.

COMMITTEE REPORTS

Nomenclature

Discoveries as announced by the Nomenclature Committee are as follows:

| FIELD NAME | DISCOVERY DATE | DISCOVERY WELL |
|-------------------------------------|----------------|---|
| Mud Creek Field (Wilkinson) | June 5, 1955 | Calto Oil Company No. D-1 Crosby Lumber & Manufacturing Company, Sec. 13-3N-1W. |
| North Church Hill Field (Jefferson) | June 16, 1955 | Calto-Gulmon No. B-1 Guidon, Sec. 23-9N-2W. |
| North Sunnyside Field (Jefferson) | June 9, 1955 | John S. Callon et al No. 1 Valentine, Sec. 65-8N-1W. |
| Soapstone Field (Wilkinson) | July 1, 1955 | Serio-Punches-Glennon No. 1 Whetstone, Sec. 31-3N-1W. |

Publicity

The Publicity Committee will appreciate receiving newsworthy information concerning civic activities of the Society committees or members.

News items may be given to Dick Morris, or to George White.

Bowling

The Petroleum League commenced activities in its fourth season of operation on Friday, September 9. The league will follow a 27-week schedule, continuing until April 13 with the championship play-off to follow by one week.

Stanolind, last season's champion, has returned with the same line-up which captured league honors last spring, and ranks as a strong favorite to repeat. Runner-up California will enjoy virtually their same line-up again this season and should be a strong contender. Stiff competition is expected from Sun, always among the leaders, and Sinclair, which has strengthened its line-up over last season. Unknown quantities include Union and United Gas, both with many new facies, and new teams: Continental, Gulf, Stanolind Strikers and an as yet un-named team which will probably be sponsored by Hycalog.

The slate of ten five-man teams makes this the biggest season yet for the league.

Having shown continued improvement throughout its history, the league is expected to rank well with the better leagues in the City Bowling Association. Always conspicuous among the leaders in past City and State Tournaments, it is hoped that the Petroleum League will fare even better in those events this season.

The league's individual champion, Don Bergmann, has lost the competition of his perennial rival, E. W. Thompson of United Gas, who has been transferred, but will receive real trouble from Stanolind's Bill LeBay in his drive to repeat as leader in the high average department. Bill, a geophysicist, has switched to the Petroleum League from the Major League where he averaged 172 last year, second best in the city.

Anyone interested in bowling in the league should contact either Dale Myers (Stanolind), league president, or Don Bergmann (California Co.), secretary. There are still several openings available. Interested spectators are invited to watch the league at the Southern Bowl on Meadowbrook Road, where they perform every Friday night beginning at 7:00 p. m.

Women's Geological Auxiliary

The Womens Geological Auxiliary opened the 1954-1955 year with a coffee on September 8 at the Riverside Park Community Building. Sixty members and guests attended the affair. President, Mrs. William Nugent headed the receiving line with the officers for the coming year.

Financial Statement of Mississippi Geological Society

June 1 - August 10, 1955

| | Expense | Income |
|---|----------|------------|
| Accounts Receivable (old) | \$ | \$ 33.30 |
| Dues | | 8.00 |
| Entertainment | 51.53 | |
| Guest Speakers | 32.00 | |
| Miscellaneous | 24.08 | |
| Office Supplies | 90.15 | |
| Stenographic Account | 58.53 | |
| Publications: | | |
| June & July | \$ 80.20 | |
| Amount collected for Past Due Accounts | 37.90 | |
| Amount collected for sales prior to fiscal year | 205.60 | |
| | 323.70 | 323.70 |
| Total Expenses and Income | \$256.29 | \$ 365.00 |
| Net Profit | | \$108.71 |
| Cash Assesets, July 31, 1955 | | |
| Petty Cash | \$ 67.08 | |
| Checking Account | 1,841.81 | |
| Savings Account | 4,052.38 | |
| Total Cash Assets | 5,961.27 | \$5,961.27 |

Emil Monsour
Treasurer
Mississippi Geological Society

New Arrivals:

- Mr. and Mrs. A. J. Lopez—a son, Frank Robert, born July 30.
- Mr. and Mrs. Gene Taylor—a son, Stephen Clarke, born July 5.
- Mr. and Mrs. Paul Fitzgerald—a daughter, Mona, born June 16.

Personals

ATLANTIC

Dick Woodhams was recently transferred to the Jackson office from Dallas. Dick is a graduate of the University of Michigan. On July 16, prior to reporting to Jackson, Dick was married to Miss Alice Serafica in Leyte, Philippine Islands. The Woodhams are living at 1327 North State Street.

CARTER

Robert P. Fietz has been transferred to the Shreveport, Louisiana district office.

CALIFORNIA

S. W. Totten, former Southeastern Division Exploration Superintendent has replaced C. H. Ramsdem, former Western Division Exploration Superintendent in the Denver, Colorado office. Mr. Ramsden has been transferred to Jackson as the new Southeastern Division Exploration Superintendent.

Norman R. Tober and Al J. Holck, geologists, have recently moved from the New Orleans office to Jackson. Norman is a graduate of the University of Michigan, while Al was graduated from the University of Nebraska.

J. E. McElroy who was graduated in geology from the University of Colorado, has transferred from the Production Department in Denver, Colorado to Jackson.

Bruce Susong recentl graduate of the University of Illinois and of Miami University is a new geologist in the Jackson office.

CITIES SERVICE

C. B. Wilder who has been transferred from Tyler, Texas, is an addition to the geological staff in Jackson.

(Continued on next Page)

Personals (Cont'd)**CONTINENTAL**

Bob Arrington has completed Continentals Geological Training Program and is now assigned to the Jackson geological department. Bob is a graduate of the University of Texas.

GULF

M. F. Kirby and wife enjoyed a vacation in New York City during the month of July.

Frank Wilson and family recently visited the state of Iowa on their vacation.

MAGNOLIA

Armando T. Ricci, Jr. is a new geologist assigned to the Jackson office. Armando received his degree from Kansas State College.

Ralph L. Gutke has been transferred to the San Antonio office.

Harry K. Veal, a geology student at the University of Oklahoma has been working in the Jackson office during the summer.

MIDSTATES

E. Paul Kneedler has resigned as District Geologist and now is with Jett Drilling Co. Roy Benke, former District Geologist with Seaboard, has assumed the duties as the new District Geologist.

OHIO

David Robbins, a recent graduate of L. S. U., is now assigned to the Jackson office. Dave and his wife Betty have a twenty-two months old son, Sandy. The Robbins are residing in the Raymond Garden Apartments.

Mr. George T. Thomas was transferred to Jackson as District Geologist. George is a graduate of Texas Tech and has been living in Grand Rapids, Michigan for the last several years. Mr. and Mrs. Thomas have two sons, Kent - aged ten, and Mark - aged eight.

SEABOARD

E. R. Hines was recently transferred from the Dallas office as District Geologist. He is a native of Carlisle, Texas, and a graduate of Texas Tech. Ralph and his wife Shirley have two children, Scott - aged five and Claire, who is four years old. The Hines are living at 641 Choctaw.

Don and Lois Gifford recently returned from a two-weeks vacation in Akron, Ohio.

SHELL

Wes Ogden was transferred to Jackson as Division Exploration Manager. Mr. Ogden was formerly Division Geophysicist in Baton Rouge, Louisiana.

Charlie Porter, geologist, was transferred to Jackson. Charlie was formerly in charge of a surface mapping party in North Mississippi and Alabama.

Tom Beard, geologist, was transferred to Jackson. Tom is in the Shell Geology Training Program.

H. E. Karges and J. S. Attaya recently resigned as geologists from the exploration department of Shell Oil Company. They have announced their association as geological consultants with headquarters in Jackson.

E. H. Rainwater and family recently returned from a months vacation in northwest U. S. and Canada.

Did You Know That:

A Large book, "Guides to Southeastern Geology" (592 plus several folded maps) is now available from the Geological Society of America, 419 West 117 Street, New York 27, N. Y., at \$3.00 per copy? The book consists mainly of notes on the geology along the main highways in the southeastern states, and guides for field trips, all prepared for the 1955 Annual Meeting of the G.S.A., to be held in New Orleans, Nov. 7, 8, 9.

The Mississippi Highway Department's soils testing laboratory is having a petrographic analysis made of Mississippi aggregate materials for use in concrete and bituminous surfaces? Mr. W. B. Johnson, who teaches part time at Millsaps College, is making the study.

Loess was first identified in this country by Lyell, in 1845, in the river bluffs near Natchez?

Jackson rests on one of the largest structures in the Gulf Coast, the Jackson uplift? An igneous intrusion in early Upper Cretaceous time pushed up several thousand feet of Lower Cretaceous and Jurassic beds, which were eroded during middle Upper Cretaceous, and now sub crop beneath the late Upper Cretaceous "gas rock". Hilgard first noted this structural anomaly in 1860.

The Tallahatta formation is well exposed in several road cuts near Meridian, along U. S. Highways 80, 11, and 45? The hard buhrstons, sandstone, and quartzite of this formation hold up one of the highest northward-facing escarpments in the Gulf Coast, especially in Lauderdale County, Miss., and Choctaw County, Ala. This escarpment has been a formidable barrier to travel, and at least two railroad tunnels have been cut through the escarpment.

SKELLY

Charles Barton and wife have returned from a trip to Texas and Monterey, Mexico. Charles will be instructor in the Physical Geology course at Millsaps College for the fall semester. This course is offered by the University of Mississippi Extension Service.

STANOLIND

Robert A. Neil, a recent graduate of Ohio State University, has been assigned to the Jackson Geological Department.

John Bredehoeft, a student at Princeton University, has been working in the Jackson office during the summer vacation.

SUN

Mr. and Mrs. D. C. Harrel spent their vacation on a cruise to Nassau.

Talmage Main and Ed Blanton, army reservists, recently spent 15 days at Ft. Jackson, S. C. and Camp Gordon, Ga., respectively.

Audley Morden has resigned from Sun and returned to Michigan to engage in consulting work.

SUNRAY - MID-CONTINENT

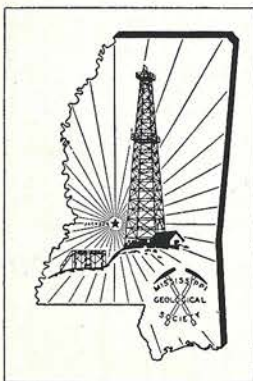
Coleman Fite, recently discharged from the Army, is now assigned to the Jackson office. Coleman, who was with Anchor Petroleum Company in Tulsa prior to entering the Service, is a 1952 geology graduate from Oklahoma University.

Larry Finrock and family recently returned from a vacation trip to Lake Nakomis, Wisconsin and Champaign—Urbana, Illinois.

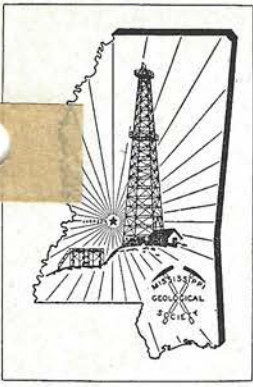
UNION PRODUCING

A. H. Nixon, after 3½ years in Jackson, has been transferred to the Houston, Texas office.

P. O. Box 2253
W. Jackson, Miss.



**Mississippi
Geological Society** QUARTERLY NEWS BULLETIN



Mississippi Geological Society



QUARTERLY NEWS BULLETIN

VOLUME III

DECEMBER, 1955

NUMBER 2



Left to Right—G. Moses Knebel (Standard Oil Co. of N. J.) President, A.A.P.G.; A. E. Blanton (Sun Oil Co.) President, G.C.A.G.S.; Gilbert A Talley (Lion Oil Co.) President, Mississippi Geological Society

Report From The President

The Executive Council wishes to thank all members who participated in the recent G.C.A.G.S. Convention at Biloxi. We, as host society, had the major part of the preparations, and many of our members served faithfully on the committees of the Gulf Coast Organization. We have received the following letter from Ed Blanton, President of the Gulf Coast Association:

P. O. Box 850
Jackson, Mississippi
November 2, 1955

Mr. Gilbert A. Talley, President
Mississippi Geological Society
Jackson, Mississippi
Dear Gil:

I wish to thank you, on behalf of the Gulf Coast Association of Geological Societies, for being our most cooperative host at the successful meeting in Biloxi on October 12-14, 1955.

It was indeed a pleasure and a great satisfaction to me to be a representative to the G.C.A.G.S. from the Mississippi Geological Society, and to be a part of such a fine meeting where everyone did so much and yet enjoyed and profited so much.

Please accept my thanks for the tremendous job done by the members of the Mississippi Geological Society and for making the fifth annual meeting of the G.C.A.G.S. one to be long and favorably remembered.

Sincerely yours,
A. E. Blanton,
President

Thanks are also due to Ben Ploch, Chairman of our Exhibit Committee, and Bob Violette, Chairman of our Publications Committee, and the members of their respective groups for the splendid job done in exhibiting and selling our Society publications at the Convention.

G.C.A.G.S Convention Termed Successful

The Fifth Annual Meeting of the Gulf Coast Association of Geological Societies was held October 12-14, 1955, at the Buena Vista Hotel, Biloxi, Mississippi, with the Mississippi Geological Society acting as host. The Baton Rouge & Southeastern Societies assisted with the plans and arrangements for the meeting.

ED BLANTON, President of the G.C.A.G.S., opened the meeting with the President's report. GILBERT TALLEY, President of Mississippi Geological Society, welcomed the delegates on behalf of the host Society. Keynote address, opening the technical session, was delivered by G. MOSES KNEBEL, President of the A.A.P.G.

One of the highlights of the technical program was MAURICE EWING'S paper on "Sedimentation in the Gulf of Mexico". Dr. Ewing is director of the Lamont Geological Observatory, Palisades, N. Y.

Several members of the Mississippi Society participated in the technical session. RUDY EWING and EMIL MONSOUR were co-authors of a paper, "Bolton Field, Hinds County, Mississippi." An interesting paper entitled "Lower Cretaceous Stratigraphy of Mississippi", was presented by JEFF D. NUNNALLY and HENRY FOWLER.

The meeting, termed a most successful one, was attended by a total of 1320. This number included 945 regular registrations, 38 students, and 337 ladies. During the Convention, entertainment included a cocktail party, seafood jamboree and a dance held on the final evening. The ladies enjoyed tours along the Mississippi Coast, both by bus and by boat. Also, a Buffet Luncheon at the Gulf Hill's Dude Ranch. Sponsored by the Mississippi Society was deep sea-fishing and a golf tournament which was conducted on Saturday.

The 1956 meeting of the G.C.A.G.S. will be held in San Antonio, Texas, on October 31st thru November 2nd.



Dr. Maurice Ewing of the Lamont Geological Observatory, Palisades, N. Y., presenting his paper "Sedimentation In The Gulf of Mexico"

News Bulletin Staff

| | | |
|---------------------|---------------------|------------------|
| W. E. Taylor | Union Producing Co. | Editor |
| Dean Miller | Sunray Oil Co. | Assistant Editor |
| W. Fleming Browning | Shell Oil Co. | Reporter |
| Donald C. Devening | California Co. | Reporter |
| John H. Marshall | Magnolia Pet. Co. | Reporter |
| J. B. Furrh | Ohio Oil Co. | Reporter |

Executive Council

| | | |
|-----------------|----------------|------------------|
| Gilbert Talley | Lion Oil Co. | President |
| E. H. Rainwater | Shell Oil Co. | Vice-President |
| Emil Monsour | Sun Oil Co. | Treasurer |
| G. K. Anderson | Ohio Oil Co. | Secretary |
| Leroy Foll | Carter Oil Co. | Program Chairman |
| A. E. Blanton | Sun Oil Co. | Past President |

G.S.A. Holds Convention In New Orleans

The Geological Society of America recently held its 1955 Annual Convention in New Orleans as guests of the Southeastern Section of the G.S.A. and Louisiana State University. This is the first time the Society has held its National Convention in the Deep South.

E. H. RAINWATER, fellow G.S.A., and Co-Chairman of the Stratigraphic Paleontological Session, attended the convention and, following the technical session, led a field trip to Tertiary type and classic localities in Mississippi and Alabama. The trip began on Thursday, November 10th, at Mint Springs Bayou, in Vicksburg. Stops during the first day were made at Forest Hill, Byram, Riverside Park in Jackson, (an alternate type locality of Moodys Branch), and at exposures of Tallahatta, Meridian sand, and upper Wilcox, near Meridian. The second day, from Meridian to Jackson, Ala., included stops at classic Wilcox, Midway and Claiborne localities, in Alabama. Saturday morning, November 12th, was spent studying the famous Little Stave Creek section, near Jackson, Clarke County, Alabama.

Among the participants in the field trip were a geologist from Italy, one from Trinidad, professors of geology at Yale, M.I.T., University of Oregon, and other universities.

The Society's 1956 Annual Meeting will be held in Minneapolis, Minn.

M.G.S. Contributes To A.A.P.G. Research Fund

A contribution of \$50.00 has recently been made by the Society to the A.A.P.G. Research Fund. The following letter was received from Mr. G. M. Knebel, President of the A.A.P.G. in connection with the contribution.

Mr. Emil Monsour
P. O. Box 850
Jackson, Mississippi

Dear Emil:

By copy of letter to you I have just learned from Robert H. Dott that the Mississippi Geological Society has contributed \$50 to the Association Research Fund. This endorsement and support is very encouraging and please convey to your society our great appreciation.

It will be about the first of January before we know the results of our solicitation for research funds. The amount is now approaching \$5500 and I have reason to look for a total of \$8000. Mr. Wallace Pratt has just sent in a check for \$500. With this new money, plus the \$6100 from the New York Convention, and our old balance, the Research Fund now stands at it's highest point in history. If this problem is worked on over a period of years, we should have a Penrose Fund of our own.

Again, I am most grateful for the action taken by the Mississippi Geological Society — Thanks.

Sincerely yours,
G. M. Knebel,
President

Resolution Of A.A.P.G. Candidate Endorsed By Council

At a recent meeting of the Executive Council, a resolution endorsing Mr. Walter H. Spears' candidacy as Vice-President of the A.A.P.G. was passed. Mr. Spears is Vice-President of Union Producing Company with headquarters at Shreveport, La. It is the opinion of the Council that he is eminently qualified for the office and that his election will materially help the representation of the Southeastern Gulf Area in Association affairs.

Geophysical Society Announces Officers and Coming Programs

The Jackson Geophysical Society will hold its next regular monthly meeting the latter part of January, 1956. PHILLIP P. GABY, Delta Exploration Company, will speak on the subject of 'Magnetic Tape Recordings'.

At a recent meeting, the Society elected the following officers for its 1955-56 Year:

| | | |
|-----------------|---------------------|------------------------|
| Phillip P. Gaby | President | Delta Exploration Co. |
| Fred Forward | Vice-President | Phillips Petroleum Co. |
| Bill Robinson | Secretary-Treasurer | Sinclair Oil & Gas Co. |

The "doodle-buggers" of Jackson have a very active organization and have many excellent papers presented at their regular meetings which would be of interest to the geologic profession. Meetings are open to anyone desiring to attend. Regular monthly meetings are held in the Roof Garden Room in the Robert E. Lee Hotel.

ROBERT BAUM, S.S.C., will present a paper on "Continuous Velocity Logging" at the Society's February meeting. Exact dates for the meetings can be obtained by contacting Phil Gaby.

Financial Statement of Mississippi Geological Society

October 10 to November 15, 1955

| | Expense | Income |
|--|------------|----------|
| Accounts Receivable (old) ----- | --- | \$ --- |
| Dues ----- | --- | 56.00 |
| Entertainment ----- | --- | --- |
| Guest Speakers ----- | 54.62 | --- |
| Meetings ----- | 13.46 | --- |
| Miscellaneous ----- | 118.10 | 29.70 |
| Office Supplies ----- | 59.68 | --- |
| Publications | | |
| October ----- | | 219.00 |
| Am't collected for past due accts. ----- | | 29.25 |
| Am't collected for sales prior to | | |
| fiscal year ----- | | --- |
| Quarterly Bulletin ----- | --- | --- |
| Stenographic Service ----- | --- | --- |
| Student Loan ----- | --- | --- |
| | | |
| Total ----- | \$ 245.86 | \$333.95 |
| Net Profit ----- | | \$ 88.09 |
| Cash Assets November 15, 1955 | | |
| Petty Cash ----- | 458.14 | |
| Accounts Receivable ----- | 97.70 | |
| Checking Account ----- | 583.87 | |
| Savings Account ----- | 5,174.87 | |
| Total ----- | \$6,314.58 | |

TWENHOFEL SPEAKS TO SOCIETY

On Thursday, November 10th, Dr. D. W. Twenhofel spoke to a large gathering of the M. G. S. on aspects of Calcareous Sediments and Carbonate Rocks. Dr. Twenhofel emphasized the great effect that environmental conditions have in the deposition of calcareous sediments. The society should feel honored and privileged to have such a renowned speaker and author to appear before them.

Gerry Anderson, of The Ohio Oil Company, Secretary of the Society, has been temporarily assigned to a Company seismograph crew. During his absence, his duties are being capably performed by Jim Furrh, also with Ohio.



Scouts examining quarry at Marquette Cement Plant, Brandon, Miss.

Society Youth Movement

The local Boy Scout Merit Badge Committee was organized for the first time during the 1954-55 Society year. The need for such a committee became evident following a number of requests concerning geology from local Scouts and scouting organizations. In addition, the Society receives letters from boys in various parts of the country, and occasionally from foreign countries, requesting some information concerning the geology of Mississippi. This general interest in the science of geology has been stimulated greatly due to the widespread search for uranium, the publicity given to the Petroleum Industry through Oil Progress Week and numerous news stories concerning our Natural Resources.

The purpose of the Merit Badge Committee is two-fold: First, to help interested Scouts earn their Geology Merit Badge and secondly, to stimulate general interest in the science of geology. The A.A.P.G. has taken an active part in encouraging members to help encourage the youth of this country in this respect.

The committee program consists of a series of informal discussions concerning the general principles of geology with appropriate movies and color slides, along with simple geological problems. In addition, the boys are taken on a number of field trips to areas of geological interest in order that they may see some "geological phenomena" and collect sufficient fossils and/or rock samples to assemble a required collection. This past year, the boys visited the Marquette Cement Plant and Quarry at Brandon, the Petrified Forest at Flora, drilling wells in Bolton field, and fossil localities and loess deposits at Vicksburg.

The committee was surprised by the large number of boys who participated in the program and was gratified by their keen interest. It should also be noted that the committee members were exceptionally faithful in attending the meetings and preparing the programs.

Plans for the coming year are similar with the hope that the year of experience will help provide a bigger and better program.



Scouts viewing Petrified Forest at Flora, Miss.

Millsaps Announces New Equipment

A new rock trimmer has been added to the Millsaps geological Laboratory. This trimmer will cut the hardest quartzites or dike rocks. Other recent additions are a 16 inch diamond saw and a set of buffing wheels. All members of the oil fraternity are invited to cut or trim cores, polish slabs or make thin sections.

Chalk Formation Used As Underground Storage For LP Gas

Operations are currently underway by the Tuloma Gas Products Company and Sinclair Oil and Gas Company, Tulsa, Oklahoma, in excavating a storage cavity in the Selma Chalk formation around Demopolis, Alabama, for the purpose of storing LP Gas. A 300-foot vertical shaft, 52 inches in diameter, will be drilled and cased with 42-inch pipe. Miners will then tunnel out horizontally to make the storage area. The gas (propane) will be maintained at a pressure of approximately 130 psi. It is estimated that some 8½ million gallons of propane will be stored in this particular storage cavity.

This is the first underground storage facility for LP gas in Alabama, and it's believed to be the first storage cavity ever made in chalk.

Petroleum League News

After reaching the one-third point in the season's schedule, the Petroleum League has resolved itself into a battle for second-, fourth- and seventh-place honors in the first-half race. With but four weeks remaining in the first half, Stanolind has, as predicted, virtually walked away from the league, leaving United Gas and Continental fighting for the runner-up position and Sun, Cities Service, California, Stanolind Strikers, and Union battling for the fourth spot, while Gulf and Sinclair are struggling with each other to keep out of the cellar.

The situation at this point is somewhat reminiscent of last year when defending champion California romped through the first half only to have Stanolind come on during the second half to get into the final play-off and emerge victorious. The second half of this season's play promises to be exciting, with California in particular much improved over early season strength, and several other teams, among them Stanolind's "second team," the "Strikers," bidding fair to upset the champs' wagon. California, the most improved team in the league of late, has won 24 of their last 32 points, after dropping 32 of their first 40. In both of the past two weeks' play, the Californians have posted a new season's high team game for the league.

In the individual honors department, pre-season ratings are holding true as regards individual averages. Stanolind Strikers' Bill LeBay is making a "no-contest" affair of the race with his nine pin bulge over second-place Don Bergmann of California. Bill's average is now 171 and is climbing steadily after a rather dismal start. Fast on the heels of Bergmann is Malon Randall, also of California, with his 159 tally. "Randy" is one of the big reasons for California's recent surge, having joined the company and the team only about a month ago. Following in order are Joe Hildebrand (Stanolind) 157, Howard Cotten (Stanolind) 154, Ed Blanton (Sun) 153, John Butler (Cities Service) 153, Dale Myers (Stanolind) 149, Charlie Brakefield (Continental) 147 and, rounding out the first ten, Johnny Gayle (California) 147.

Season's records for the league this year are: high team series (with handicap), California, 2835; high team game (with handicap), California, 1024; high individual series (with handicap), Josh Hollifield (Gulf), 663; high individual game (with handicap), Hollifield, 312 (249 actual score); high individual series (actual score), Bill LeBay, 584.

Standings after nine week's play are:

| TEAM | WON | LOST |
|--------------------|-----|------|
| Stanolind | 56 | 16 |
| United Gas | 46 | 26 |
| Continental | 43 | 29 |
| Sun | 37 | 35 |
| Cities Service | 36 | 36 |
| California | 32 | 40 |
| Stanolind Strikers | 32 | 40 |
| Union | 32 | 40 |
| Sinclair | 24 | 48 |
| Gulf | 22 | 50 |

Landmen's Dance Highlight of Christmas Festivities

Jackson Landmen's Club will have its annual Christmas Dinner Dance on December 16, 1955, in the Victory Room of the Heidelberg Hotel. Festivities will begin with a fellowship hour from 7:00 to 8:00 P.M., followed by dinner. Jerry Lane and his Orchestra will furnish the music for your dancing pleasure from 9:00 to 1:00 P.M.

Admission price is \$5.00 per person. Contact your landman for tickets.

Personals

AMERADA —

ED MINIHAN came from Oklahoma to become scout for the Jackson office.

CALIFORNIA —

A. L. LYTH, former division geophysicist, has been transferred to the Exploration Department and is now district superintendent in the Casper, Wyoming office. **JOEL MACGREGOR** replaced Lyth in the Jackson office.

JEFF GREER was recently transferred to Jackson from Grand Junction, Colorado. Jeff is a geophysicist and has been with the Company about five years.

CITIES SERVICE —

AL BEASLEY transferred to Roswell, New Mexico. Al was scout for Cities Service but is now doing geology. **JOHN LUKERT** has transferred from Lafayette, La. to become Cities Service's new geological scout.

BRUCE WILDER transferred to Jackson to the Geological Department after serving as a scout in Tyler, Texas.

LION —

GEORGE WHITE has resigned from Lion and accepted a position as geologist with Sinclair. **BILL STINSON**, new with Lion, came from New Orleans to replace George in the Jackson office.

FRANK SHAFFER, a native of New York, comes to Jackson as a trainee from New Mexico.

MAGNOLIA —

Recently transferred from the Dallas office is **CLEMENT H. BRUCE**. Clement came to Jackson November 1, 1955.

SEABOARD —

Seaboard welcomes **CHARLES H. FRY** to their Jackson office. Charles, recently discharged from the U. S. Marine Corps, received a B. S. Degree in geology from Oklahoma University.

SHELL —

S. S. DAY was recently transferred to Jackson from Jasper, Alabama where he was in charge of a surface mapping program. Before joining the Jackson Division, Stan worked in Shell's Pacific Coast Area.

WILLARD ALLRED is convalescing from a recent operation. Willard would appreciate some visitors. He is recuperating at 1112 Elcrest Street.

TOM BEARD has been transferred to Houston, Texas.

E. H. RAINWATER has been recently elected as the president of the Gulf Coast Section of the Society of Economic Paleontologists and Mineralogists.

SINCLAIR —

A new geologist to its staff is **BOB IRVING**, formerly with S.S.C. Bob graduated from Lehigh University and calls his home at Madison, N. J.

A new potential geologist arrived on November 8, 1955, at the home of Mr. & Mrs. Charlie Barber. His name is William Walter.

SUN —

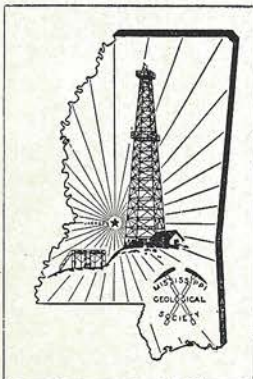
On October 26, 1955, **EMIL MONSOUR** presented the "Bolton Field, Hinds County, Mississippi" paper to the Dallas Geological Society. This paper, co-authored by Emil and Rudy Ewing, was also presented at the G.C.A.G.S. Convention in Biloxi.

TIDE WATER —

DICK WOMACK has been transferred to Houston, Texas to become the assistant to the chief geologist of the Southern Division.

LOU KIRBY, formerly in Tallahassee, came to Jackson from Houston, Texas.

P. O. Box 2253
W. Jackson, Miss.



Mississippi
Geological Society QUARTERLY NEWS BULLETIN

New Night Course At Millsaps

Dr. Richard R. Priddy of Millsaps College will offer a one-hour course in Invertebrate Paleontology starting on January 1, 1956. Classes will be held from 7 - 9:00 P.M. each Monday and Wednesday. There are no pre-requisites for the course which will include classification of fossils followed by a study of the index fossils of Mississippi. Dr. Priddy has several fossil collecting trips planned for the coming year. The fee for the course will be \$45.00.

Publications Committee

R. T. Violette reports that his committee has a supply of Transactions of the C.G.A.G.S. Vol. V, 1955 for sale for \$2.00 each.

Did You Know That:

The world's deepest well is one now drilling in Plaquemines Parish, Louisiana, about 40 miles southeast of New Orleans. On Wednesday, November 9, the well was below 21,500 feet.

The Bureau of Mines, in conjunction with the Alabama Power Co., is experimenting with the gasification of coal "in situ". The present state of this experiment is to drill a pattern of bore holes into the coal bed and to ignite the coal by electrodes. The rate of burning is controlled by forcing air down selected "in put" holes and withdrawing the combustion products from adjacent holes.

Earthquake shock waves from Mexican sources have been noted on water well level records in North Alabama. The U.S.G.S. Ground Water Branch at Tuscaloosa, Alabama, in its study of water table fluctuations, has been able to correlate hitherto unexplained short sharp rises on all recorders with seismic records of noted earthquakes.

Small reverse faults in the outcrop belt of Selma-Ripley in west-central Alabama are shown on a map recently published by the U. S. Geological Survey. The map is by Watson H. Monroe, and is entitled "Preliminary Geologic of the Northwestern Part of the Epes Quadrangle, Sumpter and Green Counties, Alabama".

The Twentieth Session of the International Geological Congress will be held in Mexico City September 4-11, 1956.

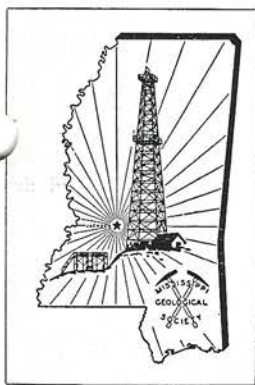
One of the greatest needs of the southeastern states in their rapid progress toward a healthy economy is an active and well supported geological survey in each state, to aid in the discovery of mineral deposits, to augment the usefulness and value of mineral deposits, and to provide information service not otherwise available to the industries and people of the state. The petroleum geologists should have an active interest in the welfare of the State Geological Surveys.

Need A Part Time Employee?

There are students at Millsaps College who are available for part time work several afternoons during the week. These students can be used in various jobs connected with sample work and as helpers in the drafting departments. Any employer interested may contact Dr. Priddy at Millsaps.

Merry Christmas





Mississippi Geological Society

QUARTERLY NEWS BULLETIN

VOLUME III

MARCH, 1956

NUMBER 3

Report From The President

At our meeting on February 2, Mr. L. H. Finfrock, of Sunray Mid-Continent, was elected Vice President of our Society. He replaces Mr. E. H. Rainwater, of Shell, who has been transferred to Houston for work in their Research Department.

The Society owes a vote of thanks to "Rainey" for his work in compiling a list of U.S.G.S. publications, periodicals, and publications of the member societies of the G.C.A.G.S. At a recent meeting, the Executive Council agreed to begin purchasing these publications. As time and money will permit, these publications will be purchased and placed in the Jackson Municipal Library, where our Society Library is now located.

Gilbert A. Talley, President

Spring Field Trip Announced

The Mississippi Geological Society will conduct a field trip April 6-7, in the area of Tertiary outcrops in central Mississippi. Outcrops of the Vicksburg, Jackson, Claiborne and Wilcox groups will be covered. A road log for the trip will be available but no guidebook will be prepared inasmuch as this trip has been covered in part in past guidebooks of the society.

Travel will be by chartered buses. The first day buses will depart at 7:30 a.m. from the Robert E. Lee Hotel, Jackson, Mississippi, will go north to Yazoo City, south to Vicksburg and back to Jackson for the night. The second day buses will also depart from the Robert E. Lee Hotel at 7:30 a.m. and will go east to Meridian, south to Heidelberg, then west to Brandon and back to Jackson, completing the field trip.

Registration should be made prior to April 1st with W. H. Hollingsworth, Sinclair Oil and Gas Company, Box 99, Jackson, Mississippi. The fee is \$10.00 per person which will include bus fare and road log.

Out of town people wishing hotel accommodations for this trip should make their own reservations.

Union Moves Into New Building

During the latter part of December, 1955, Union Producing Company moved into the new United Gas Building located on Griffith Street, west of the Robert E. Lee Hotel.

This modern, four storied building will house in addition to Union, the United Gas Corporation, and the United Gas Pipe Line Company. Presently, the building is in its final stages of completion and should be finished in several weeks.

Spring Dance - Social Highlight of April

The Mississippi Geological Society's annual spring Dinner-Dance to be held on Friday, April 20, in the Victory Room of the Heidelberg Hotel. Entertainment chairman, Bland Bounds, has announced that the "Happy Half-Hour" will start at 7:30 with dinner to be served from 8:00 to 9:00. Jerry Lane's band will play for dancing from 9:00 to 1:00 a.m. The tickets will be \$3.50 a person with several door prizes to be awarded the lucky ticket holders.

A.A.P.G. Announces New Officers

THEODORE A. LINK, President, Link, Downing & Cooke, Limited, Petroleum Consultants, Calgary, Alberta, and Toronto, Ontario, will become the 40th president of the American Association of Petroleum Geologists on April 26, G. M. KNEBEL, president of the Association announced today. Also on the 1956-57 Executive Committee of this geological organization will be G. M. KNEBEL, Manager, Exploration Division, Standard Oil Company (N.J.), New York City, past-president; BEN H. PARKER, President and Director, Frontier Refining Company, Denver, Colorado, vice president; W. A. WALDSCHMIDT, Consulting Geologist, Midland, Texas, secretary-treasurer; and, editor of the A.A.P.G. monthly Bulletin will be W. C. KRUMBEIN, Professor of Geology, Northwestern University, Evanston, Illinois.

The new A.A.P.G. officers will assume the executive responsibilities of this 12,500 member organization at the close of the 41st annual meeting of the Association, being held in the Conrad Hilton Hotel, Chicago, April 23-26.

Retiring members of the A.A.P.G. Executive Committee are past-president EDWARD A. KOESTER, Consulting Geologist, Wichita, Kansas; and vice-president HORACE D. THOMAS, Director and State Geologist, Wyoming Geological Survey, and Professor of Geology, University of Wyoming, Laramie. W. A. WALDSCHMIDT and W. C. KRUMBEIN have been elected to a second term of office.

AAPG Features Employment Service At National Convention

Prospective geology students will be given a helping hand in seeking employment at the forth-coming National AAPG Convention in Chicago, April 23-26, through the facilities of the Employment Interview Service. This Service which was started at last year's New York convention handled 1400 interviews for 209 persons from 62 schools in 23 states. Among those registering were 43 persons with master's degrees, 5 with doctor's degrees and 26 with one year or more experience.

Due to the success it enjoyed the first year in operation, the interview service is being extended and will be available to all interested persons. Employers who anticipate using this service should provide interviews for the four days at the convention. The North Exhibit Hall in the lower lobby of the Conrad Hilton, headquarters for the convention, will be partitioned into individual interview compartments.

Finfrock Elected V-Pres. OF MGS.

Larry Finfrock, Sunray-Mid Continent Oil Company was elected vice-president of the MGS at the February 9th luncheon meeting. Larry succeeds E. H. Rainwater who was recently transferred to Shell's Houston, Texas, office.

Larry, a member of MGS since 1947, received his BS and MS Degrees from University of Illinois in 1940 and 1941, respectively. Upon completion of his academic work, Larry spent approximately 1½ years with Tennessee Valley Authority and 1/2 year with Anaconda Copper Mining Company as a Geological Engineer. Following this tenure, he spent seven years, 1943 to 1950, with Carter Oil Company and became affiliated with Sunray Oil Corporation in 1950. Presently Larry is District Geologist for Sunray-Midcontinent Oil Company.

News Bulletin Staff

| | | |
|---------------------|---------------------|------------------|
| W. E. Taylor | Union Producing Co. | Editor |
| Dean Miller | Sunray-Midcontinent | Assistant Editor |
| W. Fleming Browning | Shell Oil Co. | Reporter |
| Donald C. Devening | California Co. | Reporter |
| John H. Marshall | Magnolia Pet. Co. | Reporter |
| Charles Bilberry | Gulf Refg. Co. | Reporter |

Executive Council

| | | |
|----------------|---------------------|------------------|
| Gilbert Talley | Lion Oil Co. | President |
| Larry Finrock | Sunray-Midcontinent | Vice-President |
| Emil Monsour | Sun Oil Co. | Treasurer |
| G. K. Anderson | Ohio Oil Co. | Secretary |
| Leroy Foll | Carter Oil Co. | Program Chairman |
| A. E. Blanton | Sun Oil Co. | Past President |

Jackson Geophysical Society

Jackson, Mississippi
February 21, 1956

Jackson Geophysical Society began its 1955-56 season September 23, 1955, with a dinner meeting after which Mr. R. L. Palmer, McCollum Exploration Company, presented "A New Approach to Seismic Exploration". Subsequent dinner meetings offered the following topics to the eighty-three society members and guests:

- October 24, "Seisex" A Method of Seismic Sectioning
Mr. S. M. Pena, Marine Exploration Company,
- November 21, Dr. J. P. Woods, Atlantic Refining Company,
"The Composition of Reflections"
- January 23, Jointly with the Mississippi Geological Society
Mr. R. B. Baum, Seismograph Service Corp.,
"Velocity Logging & Its Geological and Geophysical Applications"
- February 23, Mr. Phil P. Gaby, Delta Exploration Company,
"Some Present Uses of Magnetic Tape"

Under the leadership of Mr. P. P. Gaby, President, the Society entered its second year of existence and all doubts have been removed as to whether the area would support a local section as attendance at the above technical sessions has yet to be less than forty persons and has at times been as high as ninety. In the interest of promoting the science of geophysics the society is presently considering the sponsorship of a yearly scholarship at a leading university. Much additional thought and work on the idea will be needed before such a project becomes a reality.

The March meeting of the Jackson Geophysical Society is tentatively scheduled for the Third Monday of the month.

Knebel Speaks Before M.G.S. Members

Members of the M.G.S. were honored at their February 13th meeting with the appearance of Mr. G. Moses Knebel, President of the A.A.P.G., who presented his paper "Some Habitats of Oil". In business life, Mr. Knebel is Manager of the Exploration Department for Standard Oil Co., N. J.

Devoting the first part of his speech to detailed statistics, Mr. Knebel pointed out that the bulk of the present free world's oil production occurs: (1) in anticlinal structures along the hinge line on the stable side of the basins, (2) in sandstones and carbonates, (3) from formations of Mesozoic age or younger, and (4) from depths ranging from 2,000 to 8,000 feet with gravity of oil 30° API or above. These statistics are from a study of approximately 236 major oil fields which represent some 217 billion barrels of oil or 82.5% of the free world's reserves.

In addition to these statistics, Mr. Knebel dwelled briefly on the Tar Mats and on some of the "oil systems" of the world. The Athabaska Tar Mat located in Alberta, Canada, was cited as a classical example of the occurrence of these mats along the shelf area of the basins with the higher gravity oils found downdip basinward. In reference to the "oil systems", Mr. Knebel pointed out that the systems need not be confined only to geographical extent but also may exhibit great vertical ranges comprising different age sediments.

In conclusion, Mr. Knebel expressed the need of more research in the field of Petroleum Geology, a subject which he has strongly advocated during his administration.

MGS Votes To Support Resolution Introduced In Mississippi State Legislature

At its February 13, 1956, meeting, the MGS unanimously passed a resolution presented to the Society by Fred Mellen to the effect of supporting and recommending the passage of the Concurrent Resolution No. 18 which has been introduced in the Mississippi House of Representatives.

For the information of the members of MGS, the House Concurrent Resolution No. 18 is given below:
MISSISSIPPI LEGISLATURE
BY: MR. SARTOR

REGULAR SESSION 1956
TO: CONSERVATION

House Concurrent Resolution No. 18

A CONCURRENT RESOLUTION TO ESTABLISH A LEGISLATIVE RECESS COMMITTEE TO STUDY THE MISSISSIPPI GEOLOGICAL SURVEY AND THE ADMINISTRATION OF SAID SURVEY IN THIS STATE FOR THE PURPOSE OF MAKING RECOMMENDATIONS TO THE NEXT REGULAR SESSION OF THE MISSISSIPPI LEGISLATURE.

Whereas, it is well known that the State of Mississippi has extensive and largely undeveloped and inadequately located and controlled mineral resources which are potentially of great value to the citizens of the State of Mississippi, such resources consisting of water, oil, gas, clays, sands, lignite, iron ores, and other minerals, and

Whereas, many citizens feel that knowledge of these resources is not being secured and made available to the general public and interested parties as rapidly as similar knowledge is collected and made available in other states; that topographic mapping of the state has virtually ceased in recent years and such cessation has impeded the proper coordination of geological information and engineering facilities, and

Whereas, informed sources sincerely feel that the dual position of state geologist and professor of geology at the University of Mississippi is a task too great for one administrator and, further, that the geological survey of Mississippi and the offices and facilities thereof should be more centrally located in order to be of greater value to more citizens of this state,

Now, therefore, be it resolved by the House of Representatives of the State of Mississippi, the Senate concurring therein, that a legislative recess study committee should be appointed for the purpose of studying the present geological survey of the State of Mississippi and that such committee be and the same is hereby created.

Be it further resolved that the legislative recess committee for this purpose shall be composed of five members, three of such members to be appointed from the membership of the House of Representatives by the speaker thereof and two of such members to be appointed from the membership of the Senate by the Lieutenant Governor for the purpose of making a thorough and complete investigation of the organization and function of the Mississippi geological survey and to report their findings to the regular 1958 legislative session. The investigations to be made by such recess study committee shall include but shall not be limited to the following to-wit:

(1) The composition, duties, and qualifications of the members of the Mississippi Geological Survey Commission.

(2) The advisability of the director of the geological survey dividing his time between the work of such survey and teaching in an institution of higher learning.

(3) The desirability of the Mississippi geological survey being more centrally located in the state.

(4) The desirability of making geophysical surveys in the state under the direction of the geological survey.

(5) To study the desirability for, and extent of cooperation with other agencies in topographical mapping, ground water investigations, surface water investigations, and in other stratigraphic structural and general geological studies.

(6) To investigate the salary and personnel problems of the Mississippi geological survey and to report to the Mississippi Legislature as hereinabove stated.

(7) The desirability of establishing and maintaining a centrally located repository for representative samples of cuttings and cores from exploratory (wildcat) wells drilled in the state.

(8) The desirability of cooperating with the State Building Commission and the State Board of Education as well as the engineering and architectural professions of the state in the study of foundation problems arising from the presence of bentonitic and other unstable clays in the outcrop formations.

(9) To make recommendations to the 1958 regular session of the Legislature based upon their findings.

Petroleum Leaguers Finish High In City Tournament

Perhaps as kind of a reward for entering six of its ten teams in this year's City Tournament, the Petroleum League can now boast of two city championships for the 1955-56 season.

In a record-shattering performance Ed Blanton of Sun spilled 1919 pins in nine games to win the All Events title going away. Ed's actual tallies included a 614 in the team event, 500 in the doubles and 517 in the singles. His victory this year can be classed as some form of poetic justice, for three years ago he had well over 1300 pins for two events and had failed to enter the third.

Although records are incomplete, it is likely that another all-time high was the 1320 doubles mark rung up by Bill Prince (United Gas) and Jim Hughes (Union). This was better than 100 pins more than the second-place 1208 and 78 pins over the state championship total of last spring. Prince rolled an actual count of 512 and Hughes came up with a big 538 to bury all opposition.

Of the Petroleum League teams entered in the tourney, California's current league leaders finished highest, coming in 8th (out of 29 teams) with a tally of 2823. California's team consisted of John Gayle, Charles Hagans, Jim Williams, Malon Randall and Don Bergmann. Hagans was the big gun with his 673 (including handicap).

FINANCIAL STATEMENT OF MISSISSIPPI GEOLOGICAL SOCIETY January 15 through February 14, 1956

| | Expense | Income |
|--|-----------|-----------|
| Accounts Receivable (old) | \$ | \$ 75.00 |
| Dues | | 56.00 |
| Prepaid Dues (through 1959-60) | | 8.00 |
| Guest Speakers | 58.35 | |
| Meetings | 34.78 | |
| Miscellaneous (Bank Service Charge) | .89 | |
| Office Supplies | 40.17 | |
| Publications | | 145.30 |
| January | | 5.25 |
| Am't collected for past due accts. | | |
| Am't collected for sales prior to fiscal year beginning 6-1-55 | | |
| Stenographic Account | 9.91 | |
| | \$ 144.10 | \$ 289.55 |
| Net Profit \$145.45 | | |

| | | |
|-------------------------------|------------|------------|
| Cash Assets January 14, 1956 | \$ | \$6,511.06 |
| Cash Assets February 14, 1956 | | |
| Petty Cash | 199.97 | |
| Checking Account | 1,281.67 | |
| Savings Account | 5,174.87 | |
| | \$6,656.51 | |
| Net Profit \$145.45 | | |

Emil Monsour, Treasurer
Mississippi Geological Society

Nomenclature Committee

Discoveries as announced by Nomenclature Committee are as follows:

| FIELD NAME | DISCOVERY DATE | DISCOVERY WELL |
|-----------------|----------------|---|
| Ansley | Dec. 21, 1955 | Marshall R. Young et al #1 Cuevas Heirs, Sec. 30 9S-15W, Hancock County, Mississippi. |
| Kelly Hill | Dec. 23, 1955 | Calto-Gulmon #2 Johnson, Sec. 16, 4N-1W, Wilkinson County, Mississippi. |
| South Kingston | Dec. 27, 1955 | John S. Callon #1 George-Foules Unit, Sec. 24, 5N-2W, Adams County, Miss. |
| esson Salt Dome | Feb. 4, 1956 | Sun Oil Company #1 H.W. McIntosh, Sec. 35, 9N-8E, Copiah County, Mississippi. |

Dale Myers of Stanolind has been named as chairman of the Nomenclature Committee. Dale replaces L. J. Finrock, who was recently elected Vice-President of the Society.

Some Vital Statistics

The February issue of the American Geological Institute's Geological Newsletter carried a very interesting article giving statistics on the earth science profession. The results, although incomplete and preliminary, were compiled from questionnaires of 11,500 respondents between November of 1953, and the Spring of 1955.

Analysis shows 40% of the profession to have advanced degrees. In the distribution of special fields, petroleum geology leads the way with 37% with the Exploration Geophysicists holding a slight edge over the Economic Geologists for second place.

The percentage distribution of the earth scientists according to employment function is, as would be expected, predominantly that of research, development and field exploration. In this connection, one might be surprised at the low percentage, 9.1%, engaged in teaching and technical writing.

The Newsletter states further that the median annual salary of the earth scientists is \$7100.00, which is about \$1,000.00 more than the median for all scientist. It is indicated also that the geologist-geophysicists have more men in the \$25,000.00 and over group than any other scientific group.

Petroleum League News

With but four weeks gone in the second half of the season, standings are still tightly scrambled and it is impossible to foresee any trends as yet. California leads at present by a slim two point (one game) margin over both United Gas and Sinclair. Sun and Cities Service are very close behind, trailing by only three and four points, respectively. It will probably be at least four or five more weeks before any clear-cut favorite will emerge from the pack.

In the individual average race, Don Bergmann (California) has managed to overthrow the nine pin deficit reported in the last Bulletin and now leads Bill LeBay (Stanolind Strikers) 169 to 164. Both bowlers appear to be having their troubles, as they were tied at 170 a scant four weeks ago. The battle for third spot is a toss-up at this point with Joe Hildebrand (Stanolind) and his 155 tied with Malon Randall (California) and just one pin ahead of Ed Blanton (Sun). Others in the first ten include John Butler (Cities Service), Dale Myers (Stanolind), Howard Cotton (Stanolind), Charley Brakefield (Continental) and J. B. Littleton (Cities Service).

California's 1024 is still tops among the team games including handicap. They also still lead in the handicap series department although they had to put together a 2903 to maintain the lead over Continental's 2882. Josh Holifield's (Gulf) big 312 still paces the individual games with handicap but he had to surrender the lead in the series category to Don Bergmann's 673. Bergmann's series included 619 actual pins which is highest in the individual scratch series.

Present standings are:

| TEAM | WON | LOST |
|--------------------|-----|------|
| California | 24 | 8 |
| United Gas | 22 | 10 |
| Sinclair | 22 | 10 |
| Sun | 21 | 11 |
| Cities Service | 20 | 12 |
| Stanolind | 16 | 16 |
| Continental | 14 | 18 |
| Stanolind Strikers | 11 | 21 |
| Gulf | 6 | 26 |
| Union | 4 | 28 |

FIRST HALF WIND-UP

In the most complete collapse in Petroleum League history, Stanolind's defending champions blew their 13 point lead which they held three weeks before the end of the first half and Continental emerged as the winner, giving them a clear shot at the championship play-off in May. Stanolind led Conoco 62 to 49 going into December 2nd and then proceeded to drop 22 of the remaining 24 points while Conoco swept all 24. Final standings for the first half were:

| TEAM | WON | LOST |
|--------------------|-----|------|
| Continental | 73 | 31 |
| Stanolind | 64 | 40 |
| United Gas | 60 | 44 |
| California | 56 | 48 |
| Cities Service | 50 | 54 |
| Sun | 47 | 57 |
| Union | 46 | 58 |
| Sinclair | 42 | 62 |
| Gulf | 42 | 62 |
| Stanolind Strikers | 40 | 64 |

Personals

CALIFORNIA:

Friends of STAN TOTTEN will be interested to learn that he has been promoted to Vice-President & General Manager of Exploration for California's Western Region with offices in Denver, Colorado.

CARTER:

In the geophysical department, J. C. JOHNSON has joined the staff here in Jackson. J. C. was transferred from Iowa City, Montana, to this office.

GULF:

M. F. KIRBY has been transferred to the Gulf South Louisiana Exploration office in New Orleans.

L. V. MARTIN has been transferred to the Jackson office from Tallahassee, Florida.

MAGNOLIA:

Recently transferred from this office to Wichita Falls, Texas, was CARL R. COLEMAN.

OHIO:

RAYMOND FRISBY, a recent geology graduate of the Oklahoma University is a new addition to the Ohio staff. Raymond hails from Wesson, Arkansas.

PHILLIPS:

JERRY SHERMAN who received his B.S. Degree from the University of Alabama the first of this year has come to this office as a new geologist. Jerry, his wife and 8-month old daughter, Karen Jean, reside at Raymond Apts.

SHELL:

E. H. RAINWATER has been transferred to the Houston Technical Service Division to do stratigraphic research in the Gulf Coast. Rainy's new location is 3737 Belaire Blvd., Houston, Texas.

SUN:

HAROLD D. BAKER was transferred from Tyler, Texas. Harold is a native of Homer, Louisiana and a graduate of L.S.U.

SUNRAY MID-CONTINENT:

BILL HANNIGAN, a native of Fort Worth, Texas and a graduate of Oklahoma University, is a new geologist in the Jackson office

UNION:

In January, 1956, MURPHY F. SHELTON joined Union as a geological scout. Murphy received his B.S. Degree from Northeast Louisiana State College in August, 1955; however, he has been associated with United Gas Pipe Line Company for the past 15 years. Murph has a daughter, Ruth Ann, and a son, Harrell.

NEW ARRIVALS:

Mr. and Mrs. Whatley, a daughter, Sara Robbin, born December 9, 1955.

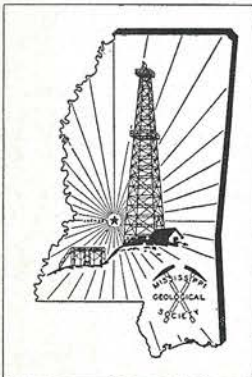
Mr. and Mrs. Charles Bilberry, a daughter, Cynthia Jane, born December 15, 1955.

Mr. and Mrs. Ray Scurlock, a son, Dan Gaines, born December 16, 1955.

Mr. and Mrs. Dean Miller, a son, Stephen Jacobs, born January 29, 1956.

The worlds deepest well was bottomed at 22,570 feet and was scheduled for testing 3 prospective Miocene sand pay zories below 21,500 feet. This well, Richardson & Bass, John W. Mecom & Freeport Sulphur No. 1-L LL & E is located in Plaquemines Parish, Louisiana on the northeast flank of Lake Washington salt dome.

P. O. Box 2253
W. Jackson, Miss.

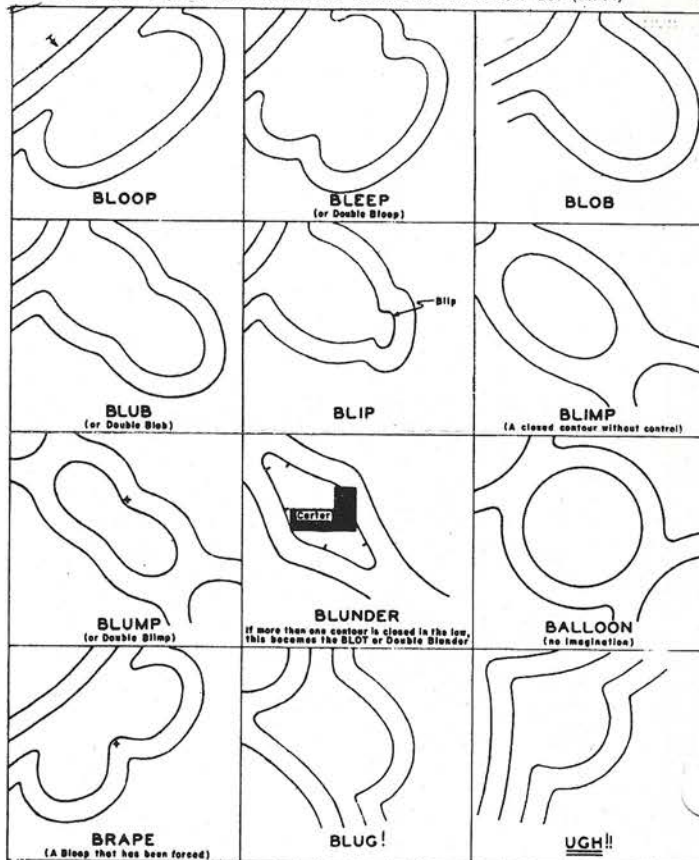


Mississippi Geological Society QUARTERLY NEWS BULLETIN

A MANUAL OF STRUCTURAL INTERPRETATIONS

OR THE PHYLOGENY AND MORPHOLOGY OF THE "BLOOP"

Taken from Corpus Christi Newsletter whose editor was granted permission reprint by the Exploration Newsletter of the Standard Oil Co. (N. J.)



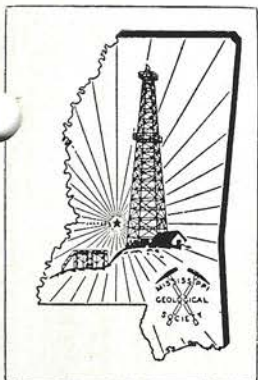
by L. B. Pope and G. O. Winston

Currie To Present Salt Dome Paper

John B. Currie of Gulf Research and Development Company, Pittsburgh, Pennsylvania, will present his paper "The Origin and Development of Graben Structures Associated with Salt Domes". Mr. Currie is appearing under the auspices of the AAPG Distinguished Lecture Committee. This will be a dinner meeting beginning at 7:00 P. M., April 10, 1956, on the roof of the Robert E. Lee Hotel.

According to latest statistics concerning oil reserves, the Near East, Iraq, Kuwait, and Saudi Arabia has 75% of the free world reserves.

Gilbertown field in Choctaw County, Alabama produces oil from fractured Selma chalk in addition to Eutaw sands.



Mississippi Geological Society

QUARTERLY NEWS BULLETIN

VOLUME III

MAY, 1956

NUMBER 4

Report From The President

For the successful year which we have had, I would like to express my sincere thanks to the members of the Society's Committees:

To Bland Bounds, LeRoy Francis, Wynne Adams and Glenn Clark of the Entertainment Committee for their work in providing a meeting place for the Society, and in taking care of the many details. This Committee is now completing final plans for our Spring Dance.

To Larry Finrock, and later to Dale Myers, and the members of the Nomenclature Committee for the efficient functioning of this important part of the work of the Society.

To Paul Fitzgerald and the members of the Projection Committee whose work added much to the successful presentation of the papers at our meetings.

To Dick Morris and George White of the Publicity Committee for the punctual mailing of all Society meeting announcements, and the handling of newspaper publicity.

To Bob Violette and the members of the newly formed Publications Committee for the tremendous task of the sale and mailing of Society publications. Thanks are also due Ben Ploch, who was Chairman of the Exhibit Committee of our publications at the Biloxi Convention, which caused a considerable increase in sales.

To Ed Blanton, President of the Gulf Coast Association of Geological Societies for the year 1955, who, with his many committees, made the Biloxi Convention so successful.

To Gene Taylor, Editor, and the members of the Quarterly News Bulletin Staff for their splendid work on this important Society publication.

To Claude Smith and the members of the Committee on Preservation of Cores and Samples for their work with the Legislature, which culminated in the passage of Senate Concurrent Resolution No. 137.

To Emmett Adams, Fred Mellen, Dr. Priddy, Bill Hollingsworth and Bob Middendorf for their work which made the recent Field Trip a success.

To LeRoy Foll and the members of the Program Committee for the excellent technical programs which we have had this year.

To Rainy Rainwater for the compilation of an extensive geological bibliography which we are at present purchasing for deposit in the Geological Library at the Jackson Municipal Library.

To Earl Newcomer and the members of the Boy Scout Merit Badge Committee for their time-consuming and very important work with the Jackson Boy Scouts.

To the members of the Executive Council for their fine spirit of cooperation, and their almost perfect attendance at meetings.

It has been for me a pleasure and an honor to serve as your president this year.

Gilbert A. Tailey

Spring Field Trip Well Attended

Some 60 people attended the recent field trip sponsored by the M.G.S. covering the Vicksburg, Jackson, Claiborne and Wilcox groups of central Mississippi. Of the number, approximately 14 were students from Millsaps College. Chairmen Emmett Adams and Fred Mellen wish to express their appreciation and thanks to Doctor Priddy of Millsaps for his enlightening and informative talks at the various sections examined by the group.

Election of Officers To Be Held At May 24 Meeting

Election of officers for the MGS for the year 1956-57, will be held on May 24. The meeting will be held at the American Legion Hut on Woodrow Wilson Drive at 7:00 P. M. Refreshments will be served following the business meeting.

Everyone is urged to make note of this date on their social calendars and attend the meeting. A biographical sketch of the candidates for election can be found on the inside of this bulletin.

Geological-Geophysical Joint Meeting Scheduled For May 14

At 7:00 P.M. on May 14, there will be a joint meeting of the Mississippi Geological Society and the Mississippi Geophysical Society. Mr. James Affleck of the Gulf Research and Development Company, Pittsburgh, Pennsylvania, will give his paper "Geologic Interpretation of Aeromagnetic Surveys". This paper is designed to be of special interest to both geologists and geophysicists. It is an attempt to give a complete picture of geological interpretation of aeromagnetic data. This will be the last dinner meeting of the year and it is to be held in the Coronet Room of the Edwards Hotel.

Scholarship Award Sponsored By MGS

A \$250.00 Scholarship Award was to be presented by the MGS to the Winner of the Physiography Section of the State Junior Science Fair which was held on April 27 and 28, 1956, at Millsaps College. This Fair was under the joint auspices of the Mississippi Academy of Science and Millsaps College. The actual recipient of the award was unknown at the time the Bulletin was printed.

The recipient of the award is encouraged to apply the scholarship toward a geological degree at one of the state institutions.

Field Trips of Near-By Societies Announced

Announcements have been received of field trips sponsored by the Corpus Christi, Texas, and the Illinois Geological Societies.

The Corpus Christi Society will hold its Spring Trip on May 11 and 12, 1956, covering the geological section from Pleistocene to the Jurassic in parts of South Texas and Northeastern Mexico.

The Illinois Society's Trip will cover the Paleozoics from the Pennsylvanian to the Devonian with primary attention directed toward the Lower Chester Series of the Mississippian Age. Dates on this trip are May 11-13, 1956, with the trip being centered in the Anna-Jonesboro area of Union County, Illinois.

Anyone interested in either of these trips can contact the editor of the Bulletin for further details and registration information. In regard to the Corpus trip special forms must be submitted for entry into Mexico and re-entry into the United States for automobiles.

News Bulletin Staff

| | | |
|---------------------|---------------------|------------------|
| W. E. Taylor | Union Producing Co. | Editor |
| Dean Miller | Sunray-Midcontinent | Assistant Editor |
| W. Fleming Browning | Shell Oil Co. | Reporter |
| Jack Henderson | Amerada | Reporter |
| John H. Marshall | Magnolia Pet. Co. | Reporter |
| Charles Bilberry | Gulf Refg. Co. | Reporter |

Executive Council

| | | |
|----------------|---------------------|------------------|
| Gilbert Talley | Lion Oil Co. | President |
| Larry Finrock | Sunray-Midcontinent | Vice-President |
| Emil Monsour | Sun Oil Co. | Treasurer |
| G. K. Anderson | Ohio Oil Co. | Secretary |
| Leroy Foll | Carter Oil Co. | Program Chairman |
| A. E. Blanton | Sun Oil Co. | Past President |

- MGS Spring Dance Well Attended -

A large group of geologists, geophysicists, guests, et al, enjoyed the spirits of spring at the Annual Dance on April 20, 1956, at the Victory Room of the Heidelberg Hotel. The Entertainment Committee is to be complimented on their fine work toward making the dance a success.

Members of the Committee and the Society as a whole extend thanks to the various companies and firms for their generous contributions toward one of the finest dances of the Society. Following is a list of the contributors: Bariod, Lyle Cashion Co., Clinch-Miller Drlg. Co., Delta Exploration, Drilling & Service, Halliburton, Jett Drlg. Co., Lane-Wells, Larco Drlg. Co., Neely's Blue Print, Petersen Drlg. Co., Ridgway's, Inc., Serio-Punches, United Geophysical.

CANDIDATES FOR PRESIDENT**NAME:**

Dwight H. Bingham, Jr.
POSITION:
 Division Geologist
COMPANY:
 Continental Oil Company
ACADEMIC TRAINING:
 1944-49 Colorado School of Mines, Geol.
 Eng.
EXPERIENCE:
 1949 - Continental Oil Company
PUBLICATIONS:
 None
PROFESSIONAL AFFILIATIONS:
 A.A.P.G.
MISSISSIPPI GEOLOGICAL SOCIETY
ACTIVITY:
 Member, 1951
 1954-55, Treasurer
A. A. P. G. ACTIVITY
 Member, 1950.

**NAME:**

Ben Ploch
POSITION:
 District Geologist
COMPANY:
 Skelly Oil Co.
ACADEMIC TRAINING:
 University of Kentucky, B.S., 1942
 University of Kentucky, Graduate Work,
 1945, 1946
EXPERIENCE:
 Skelly Oil Co., Illinois, 1946 to 1950
 Skelly Oil Co., Mississippi-Alabama, 1950-56
PROFESSIONAL AFFILIATIONS:
 A.A.P.G. Joined 1955
MISSISSIPPI GEOLOGICAL SOCIETY
ACTIVITY:
 Chairman Entertainment Committee 1953
 Secretary 1954
 G.C.A.G.S. Exhibit Committee Chairman
 1956

**CANDIDATES FOR VICE-PRESIDENT****NAME:**

Gerald K. Anderson
POSITION:
 Geologist
COMPANY:
 The Ohio Oil Co.
ACADEMIC TRAINING:
 1942-43, University of Illinois
 1946-49, University of Illinois, B.S.
 1949-50, Texas Tech, M.S.
EXPERIENCE:
 1950-52, Instructor, Miami University, Oxford, Ohio
 1952- Ohio Oil Co.
PUBLICATIONS:
 None
PROFESSIONAL AFFILIATIONS:
 A.A.P.G.
MISSISSIPPI GEOLOGICAL SOCIETY
ACTIVITY:
 Member, 1952
 1953-54, Entertainment Committee
 1954-55, Chairman, Entertainment Committee
 1955 Chairman, Projection & Sound Committee, G.C.A.G.S. convention in Biloxi.
 1955-56, Secretary
A. A. P. G. ACTIVITY:
 Member, 1953

**NAME:**

Emil Monsour
POSITION:
 Asst. District Geologist
COMPANY:
 Sun Oil Co.
ACADEMIC TRAINING:
 1931-1935, Louisiana State University, B.S.
 1935-1936, Louisiana State University, M.S.
EXPERIENCE:
 1936- present, Sun Oil Company
PUBLICATIONS:
 "Micropleistocene Analysis of Jackson Eocene of Eastern Mississippi."
 A.A.P.G., Jan., 1937, Vol. 21, No. 1
 Co-Author, "Bolton Field, Hinds County, Mississippi," Preliminary Report
PROFESSIONAL AFFILIATIONS:
 American Assn. of Petroleum Geologists
 Geological & Mining Societies of American Universities
MISSISSIPPI GEOLOGICAL SOCIETY
ACTIVITY:
 Member, 1952
 1952-53, Wilcox Field Trip Guide Book, Asst. Editor
 1953-54, Program Committee
 1954-55, Program Committee, Chairman, March-June, 1955
 1953-55, Chairman, Committee on Preservation of Samples & Cores
 1955-56, Treasurer
A. A. P. G. ACTIVITY:
 Associate Member, 1934
 Member, 1936
 1953-55, Committee on Preservation of Samples and Cores.



Call For Papers For G.C.A.G.S. Convention

Again the M.G.S. is being called upon to furnish its quota of papers for the technical program of the annual G.C.A.G.S. meeting in San Antonio, Texas, this fall. If any member of the society has a paper of general interest or knows of an unpublished paper by some author in this area, it would be appreciated if he would advise Wilbur H. Knight, Assistant Editor, G.C.A.G.S.

This society has always contributed its share of the technical papers and there is no reason why we shouldn't continue to do so. Your serious consideration of this request is sincerely solicited.

Nomenclature Committee

Latest field discovery as announced by Nomenclature Committee

| Field Name | Discovery Date | Discovery Well |
|----------------------------------|-------------------|---|
| Okolona Field (Monroe County) | February 27, 1956 | Pure Oil Company #1 E. L. Murphree, Sec. 28-12S-6E. |

CANDIDATES FOR SECRETARY

NAME:

Emmett R. Adams

POSITION:

Division Stratigrapher

COMPANY:

Shell Oil Co.

ACADEMIC TRAINING:

1946-50, Louisiana State University, B.S.

EXPERIENCE:

Shell Oil Co., 1951-

PUBLICATIONS:

None

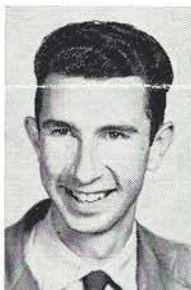
PROFESSIONAL AFFILIATIONS:

Member S.E.P.M., Representative for Gulf Coast Section of S.E.P.M., 1955 and 1956

MISSISSIPPI GEOLOGICAL SOCIETY

ACTIVITY:

Member 1951
Co-Chairman Field Trip Committee, 1955-56



NAME:

Bland D. Bounds

POSITION:

Division Geologist

COMPANY:

Phillips Petroleum Co.

ACADEMIC TRAINING:

1936-40 Texas Technological College, Lubbock, Texas Geological Engineering, B.S.

EXPERIENCE:

1940-41 Engineering Dept., Shell Oil Co., Midland, Texas
1941-42 Surface Geologist, Phillips Petroleum Co., West Texas & New Mexico
1945-49 Subsurface Geologist, Phillips Petroleum Co., Evansville, Indiana
1949-53 District Geologist, Phillips Petroleum Co., Evansville, Indiana
1953-56 Phillips Petroleum Co., Jackson, Mississippi

PUBLICATIONS:

None

PROFESSIONAL AFFILIATIONS:

A.A.P.G., 1947

M.G.S., 1953

MISSISSIPPI GEOLOGICAL SOCIETY

ACTIVITIES:

1954-55 Member Nominating Committee & Program Committee
1955-56 Chairman Entertainment Committee



CANDIDATES FOR TREASURER

NAME:

Claude D. Smith

POSITION:

Geologist

COMPANY:

Union Producing Co.

ACADEMIC TRAINING:

Louisiana State University, B.S. 1938
Louisiana State University, Graduate Work 1945-46

EXPERIENCE:

1946-47 Pan American Production Co.
1947- Union Producing Co.

PUBLICATIONS:

AAPG—West Central Texas Development, 1946

PROFESSIONAL AFFILIATIONS:

A.A.P.G.

M.G.S.

MISSISSIPPI GEOLOGICAL SOCIETY

ACTIVITY:

1952-53 Co-Chairman Field Trip Committee
1953-54 Field Trip Committee, Chairman Arrangements Sub-Committee
1954-55 Chairman G.C.A.G.S. Entertainment Committee
1955-56 Chairman Committee on Preservation of Samples & Cores

A.A.P.G. ACTIVITY:

Associate 1946

Member 1949

Member Committee on Preservation of Samples & Cores 1955-56



NAME:

Leroy Foll

POSITION:

Production Geologist

COMPANY:

The Carter Oil Co.

ACADEMIC TRAINING:

Bachelor of Geology Degree from University of Tu'sa, 1951

EXPERIENCE:

1951 - Carter Oil Company

PUBLICATIONS:

None

PROFESSIONAL AFFILIATIONS:

A.A.P.G.

MISSISSIPPI GEOLOGICAL SOCIETY

ACTIVITY:

Member, 1951

1953-54, Field Trip Committee

1954-55, Publicity Committee

1955-56 Program Chairman

A. A. P. G. ACTIVITY:

Member, 1951



Personals

CALIFORNIA - - -

In March, DON DEVENING resigned as geologist to accept a job with Justiss-Mears, Jena, Louisiana. Don had been with California approximately 3½ years. His family will join him in Jena after the school term is over.

After spending the last five months as a geological observer on its seismograph crew in Louisiana, Mississippi, and Alabama, ANDY SESTAK has returned to Jackson. Incidentally, Andy will have been married about one week when the bulletin is sent out.

GARLAND WATTS is a new geologist who has just recently received his B.S. degree in Geological Engineering from Oklahoma University. Garland joined this office in February.

CARTER - - -

Recently transferred from Shreveport office to the Geophysical Staff here is W. L. DINSTELL.

CHESTER GILBERT is a new addition to the Geological Staff. Chester has just completed his academic work on a Master's degree in geology from University of Tennessee.

GULE - - -

JAKE NUNNALLY has been transferred to New Orleans in the capacity of Zone Geologist for the South Louisiana Area. RAY SCURLOCK, formerly Regional Geologist, has been promoted to succeed Jake as Zone Geologist, Jackson Exploration Zone.

M. F. KIRBY has been returned to the Jackson Zone from New Orleans to be Regional Geologist.

SHELL - - -

S. S. DAY was recently transferred from Jackson to Baton Rouge, La.

UNION - - -

WILL KNIGHT has resigned as District Geologist to accept a position with Larco Drilling Company, Jackson, Mississippi. Will had been associated with Union since November, 1941, when he started as a geological scout. In 1948, he became District Geologist.

Succeeding Will is JOHN F. McWILLIAMS, who has been District Geologist at Monroe, Louisiana, for the past four years. Coming to Jackson will be like returning home to John as he spent seven years (1945-52) as a geologist in Jackson. John has a daughter, Mary Elise, and a son, John, Jr.

OTHERS - - -

Friends of HENRY McCLURG, formerly with Sohio here in Jackson, will be interested in learning that he is now in the consulting business in Jackson.

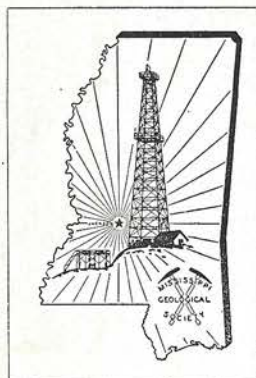
NEW ARRIVALS - - -

To Mr. and Mrs. David Brasfield, Carter, a son, David William, born April 12.

To Mr. and Mrs. Ed Matulich, Sun, a son, Michael Young, born March 19.

The State Tax Commission collected \$590,195.93 on 3,472,774 barrels of oil and condensate sold during January, 1956. The average price paid was \$2.52 per barrel.

P. O. Box 2253
W. Jackson, Miss.



Mississippi
Geological Society QUARTERLY NEWS BULLETIN

FINANCIAL STATEMENT OF MISSISSIPPI GEOLOGICAL SOCIETY

February 15 through March 14, 1956

| | Expense | Income |
|-------------------------------------|------------|------------|
| Dues | \$ | \$ 40.00 |
| Entertainment | 75.00 | |
| Guest Speakers | 4.00 | |
| Miscellaneous (Bank Service Charge) | .10 | |
| Office Supplies | 82.40 | |
| Publications | | |
| February | | 105.34 |
| Am't collected for past due accts. | | 126.85 |
| Quarterly News Bulletin | 55.99 | |
| Reproduction of Publications | 27.98 | |
| Stenographic Account | 93.74 | |
| | \$ 339.21 | \$ 272.19 |
| Cash Assets February 14, 1956 | \$ | \$6,656.51 |
| Cash Assets March 14, 1956 | | |
| Petty Cash | 421.84 | |
| Checking Account | 992.78 | |
| Savings Account | 5,174.87 | |
| | \$6,589.49 | |

Net Loss \$67.02

Emil Monsour, Treasurer
Mississippi Geological Society

Did You Know That -

The Midway salt dome in Lamar County, Mississippi was the first drilled salt dome in Mississippi. This dome was discovered almost 20 years ago — January, 1937 — by Sun Oil Co., encountering cap rock at 1655 feet and salt at 2524 feet.

Gilbertown field in Choctaw County, Alabama produces oil from fractured Seima chert in addition to Eutaw sands.

The most drilled salt dome in Mississippi is Richton salt dome located in Perry County. Thirty-four wells have been drilled on its top; cap rock was encountered at 532 feet.

The first oil production in Mississippi was established September 21, 1939 by Union Producing Co., No. 1 Woodruff, for Tinsley Field, Yazoo County. Surface work by F. G. Mellen and later seismic checking led to this discovery.

The first oil production in Louisiana was established during August, 1901 by Hegwood Brothers No. 1 Jennings, on the Jennings Salt Dome of Arcadia Parish.

The first oil production in Alabama was established February 15, 1944 by Hunt No. 1 Jackson for Gilbertown Field in Choctaw County.