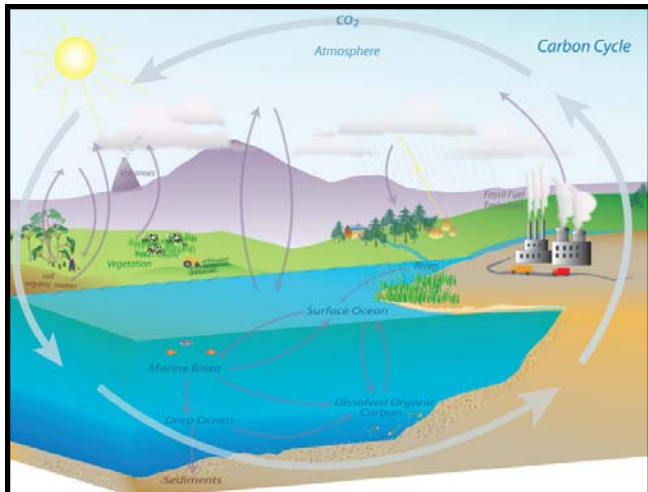
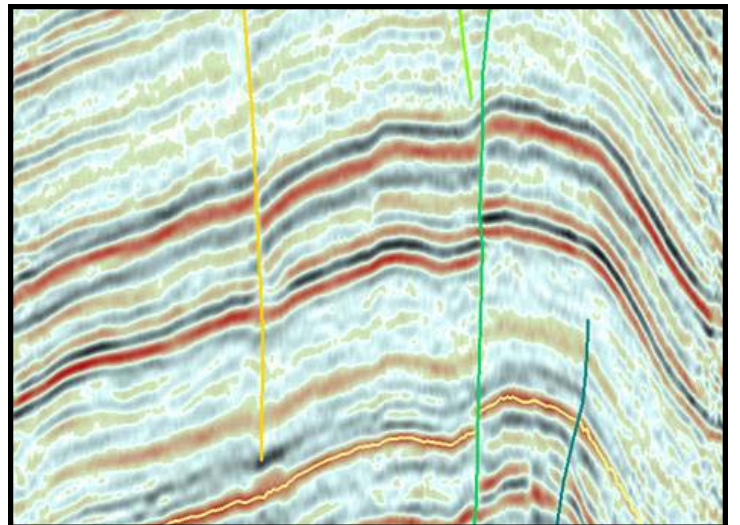
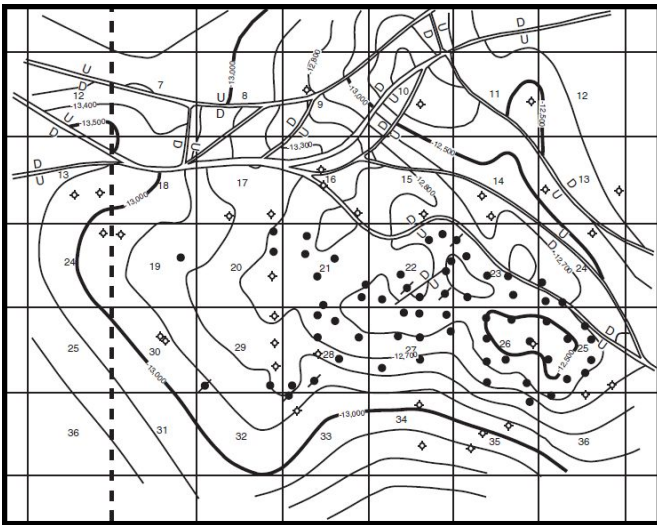




MISSISSIPPI GEOLOGICAL SOCIETY

eBULLETIN





MGS 2012-2013 BOARD OF DIRECTORS

Officers

President	Jim Files	Independent	jfgd@comcast.net	(601) 853-0701
1st Vice President	Neil Barnes	Tellus Operating	nbarnes@tellusoperating.com	(601) 898-7444
2nd Vice President	Joe Johnson	Tellus Operating	jjohnson@tellusoperating.com	(601) 898-7444
Secretary	Todd Hines	Moon-Hines	thines1360@aol.com	(601) 572-8300
Treasurer	Bill Bagnall	BLM	wbagnall@blm.gov	(601)-977-5417
Webmaster	Steve Walkinshaw	Vision Exploration	steve@visionexploration.com	(601) 607-3227
Advertising	Matt Caton	Tellus Operating	mcaton@tellusoperating.com	(601) 898-7444
Editor	Matt Caton	Tellus Operating	mgs@treetop.us.com	(601) 898-7444

Boland Scholarship

President	Neil Barnes	Tellus Operating	(601) 898-7444
Secretary	Dave Cate	Pruet Oil	(601) 948-5279
Members	Joe Johnson	Tellus Operating	(601) 898-7444
	Tony Stuart	Venture Oil & Gas	(601) 428-7725
	James Starnes	DEQ	
	Bob Schneeflock	Geodigital Consulting	(601) 853-0701

Honorary Membership

Chairman	Charles H. Williams, Jr. Vaughey & Vaughey		(601) 982-1212
Members	Dudley J. Hughes	Hughes South Corp.	(601) 420-9892
	E. Ralph Hines	Moon-Hines	(601) 572-8300
	Jerry Zoble	Independent	

MGS Representatives

AAPG	Maurice Birdwell	Independent	(601) 936-6939
GCAGS	Danny Harrelson	U.S. Army R&D	(601) 634-2685

Other

Environmental	Ken Ruckstuhl	Environmental Mgt.	(601) 992-8233
Historian	Stanley King	Independent	(601) 842-3539



PRESIDENT'S LETTER

Jim Files

MGS Members,

I would like to thank Dave Cate and his able committee for interviewing our Boland Scholarship candidates again this year. I know you will want to personally thank Dave for his tireless effort this year, as well as the many others that he has served. I also hope everyone will come to the meeting to congratulate the best and brightest of our geology students in the state and meet some of their professors.

Contributions, via MGS, for the J. Ishee fund will draw to a close by the May meeting. You still have time to contribute if you like by sending to:

MGS
PO Box 422
Jackson, MS 39205-0422

Look forward to seeing you on Thursday!

Cheers,

Jim

MGS MEETING SCHEDULE

When	What/Who	Where
September 13, 2012	Fall BBQ	Jackson Yacht Club-5:30pm
October 4, 2012	Steve Walkinshaw The Lower Brown Dense Lime Trend	River Hills – 11:30am
November 8, 2012	Morgan Brown Prestack Depth Migration for “Easy” Onshore Plays	River Hills – 11:30am
December 1, 2012	Christmas Party and Dance	Colonial Country Club
January 10, 2013	Dr. Lesli Wood Tuscaloosa Depositional Systems	River Hills – 11:30am
February 14, 2013	Kirk Barrell Tuscaloosa Marine Shale	River Hills – 11:30am
March 14, 2013	David Dockery Mississippi fossils as illustrated in “ <i>The Geology of Mississippi</i> ”	River Hills – 11:30am
April 11, 2013	Boland Scholarship Awards	River Hills – 11:30am
May 9, 2013	Spring Fling	Jackson Yacht Club– 5:30pm



THE UNIVERSITY OF
SOUTHERN
MISSISSIPPI

MILLSAPS
COLLEGE

OFFICERS MEETINGS

August 4, 2012
September 6, 2012
September 27, 2012
November 1, 2012
December 6, 2012
January 3, 2013
February 7, 2013
March 7, 2013
April 4, 2013
May 2, 2013



BOLAND SCHOLARSHIP



This year the Boland Scholarship committee interview several candidates from around the state and selected four deserving geoscience students who excelled both in the classroom and in their community.

MGS is proud to announce the 2012-2013 Boland Scholarship Award winners:

Cody Strack – Millsaps College

Courtney Ash – University of Mississippi

Danielle Merritt – Mississippi State University

Russell Anderson – University of Southern Mississippi

CONGRADULATIONS!





BOLAND SCHOLARSHIP DONATIONS

MGS would like to thank the following individuals for their generous donations to the 2013 Boland Scholarship Fund.

Maurice Birdwell

Ken McCarley

George Smith

Maurice Meylan

Terry Bryant

Jim Michael

Chris Franks

Meade Hufford

Dave Cate

Jak Douglas

Paul Gribas

If you would like to make a donation please see Bill Bagnall at this months meeting, or you can send your contribution to the following address:

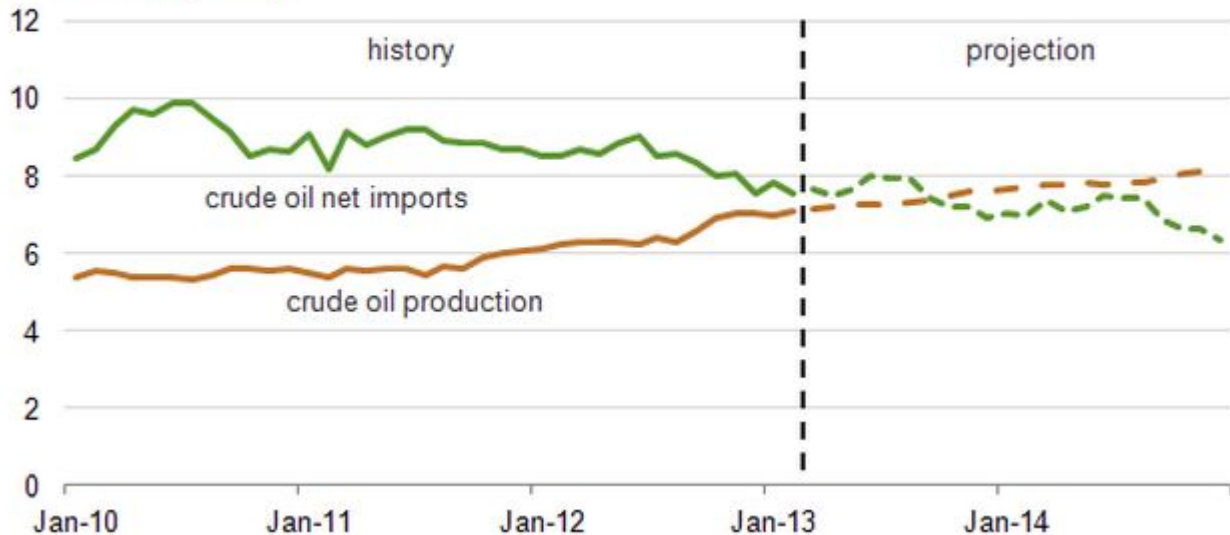
**Mississippi Geological Society
PO BOX 422
Jackson, MS 39205-0422**



INFORMATION

Oil Production

U.S. monthly crude oil production and crude oil net imports, 2010 through 2014
million barrels per day



US monthly crude oil production is expected to exceed the amount of crude oil imports later in 2013 for the first time since February 1995, the Energy Information Administration projected. The projected change is primarily attributed to rising US crude oil production, particularly from shale and other tight rock formations in North Dakota and Texas.

In fourth-quarter 2014, monthly crude oil production is forecast to top 8 million b/d and net crude oil imports are expected to fall below 7 million b/d. The gap between monthly US crude oil production and imports is expected to reach 2 million b/d by the end of next year, according to EIA's March 2013 Short-Term Energy Outlook.

Changes could happen to the timing forecast of the crossover between oil production and imports, based largely on uncertainties in supply conditions.



NEWS

MDEQ



The Mississippi Department of Environmental Quality (MDEQ) would like everyone to know they have started putting old Survey Bulletins online. These Bulletins are available through:

<http://www.deq.state.ms.us>

Below is a list of sample links you can copy/paste into your browser.

http://www.deq.state.ms.us/MDEQ.nsf/page/Geology_Bulletin131ATLASOFSHALLOWMISSISSIPPISALTDOMES?OpenDocument

http://www.deq.state.ms.us/MDEQ.nsf/page/Geology_Bulletin129StreptoneuranGastropodsTheCoffee_SandCampanianNEMS?OpenDocument

[http://www.deq.state.ms.us/MDEQ.nsf/pdf/Geology_Bulletin125/\\$File/Bulletin%20125.pdf?OpenElement](http://www.deq.state.ms.us/MDEQ.nsf/pdf/Geology_Bulletin125/$File/Bulletin%20125.pdf?OpenElement)

http://www.deq.state.ms.us/MDEQ.nsf/page/Geology_Bulletin123?OpenDocument

http://www.deq.state.ms.us/MDEQ.nsf/page/Geology_Bulletin100?OpenDocument

http://www.deq.state.ms.us/MDEQ.nsf/page/Geology_Bulletin23PaleozoicRocks?OpenDocument

http://www.deq.state.ms.us/MDEQ.nsf/page/Geology_Circular-RocksAndFossilsFoundInMississippisGravelDeposits?OpenDocument

http://www.deq.state.ms.us/MDEQ.nsf/page/Geology_Circular-WindowsIntoMississippi%E2%80%99sGeologicalPast?OpenDocument



MGS - J. Ishe Fund

Many thanks to the following people who have made generous contributions to the MGS - J Ishe Fund:

H. Vaughn Watkins

David K. Hancock

Lars Johnson

Paul J. Gribas

Armando Ricci

Maurice Birdwell

Pruet Oil Company LLC

If you would like to make a donation please see Bill Bagnall at this months meeting, or you can mail your contribution to the following address:

**Mississippi Geological Society
J. Ishe Fund
PO Box 422
Jackson, MS 39205-0422**



ARTICLE OF THE MONTH

Oil prices continue falling; gas prices climb



Oil prices continued falling Apr. 5 with oil dropping a hefty 5% through last week on the New York market. Natural gas continued to benefit from cold weather forecasts, up 2.5% for the week.

Investors “are starting to fear that perhaps the US economy is not growing as strongly as previously thought,” said Marc Ground at Standard New York Securities Inc., the Standard Bank Group. “We are not surprised to see an easing of the growth momentum that we saw in the first 2 months of the year. Our base case remains that, although an improvement on last year, the US will experience fairly tepid growth in 2013.”

In Houston, analysts with Raymond James & Associates became more bullish on gas, raising their 2013 and 2014 average price forecasts because of “colder winter-ending weather.” They now expect US gas futures to average \$3.85/Mcf this year, up from their earlier prediction of \$3.25/Mcf. “This is still slightly below the strip as we believe higher winter prices will encourage a reversal in the coal-to-gas switching through spring 2013,” they said. “We expect summer 2013 natural gas prices to strengthen as the market struggles to refill gas storage.”

They expect gas fundamentals to remain relatively tight “as cheap US natural gas prices encourage solid demand growth, but low-cost shale gas allows the 2014 gas price to balance the supply and demand at \$4/Mcf.” That’s up from their previous prediction of \$3.75/Mcf. They said, “We remain convinced that both US gas demand and US gas supply can grow profitably at a \$4.25/Mcf gas price.”

Energy prices

The May contract for benchmark US light, sweet crudes dropped 56¢ to \$92.70/bbl Apr. 5 on the New York Mercantile Exchange. The June contract declined 55¢ to \$93.01/bbl. On the US spot market, West Texas Intermediate at Cushing, Okla., was down 56¢ to \$92.70/bbl.

Heating oil for May delivery lost 5.38¢ to \$2.91/gal on NYMEX. Reformulated stock for oxygenate blending for the same month decreased 3.51¢ to \$2.86/gal.

The May natural gas contract, however, jumped 17.8¢ to \$4.13/MMbtu on NYMEX. On the US spot market, gas at Henry Hub, La., regained 6.8¢ to \$4.02/MMbtu.

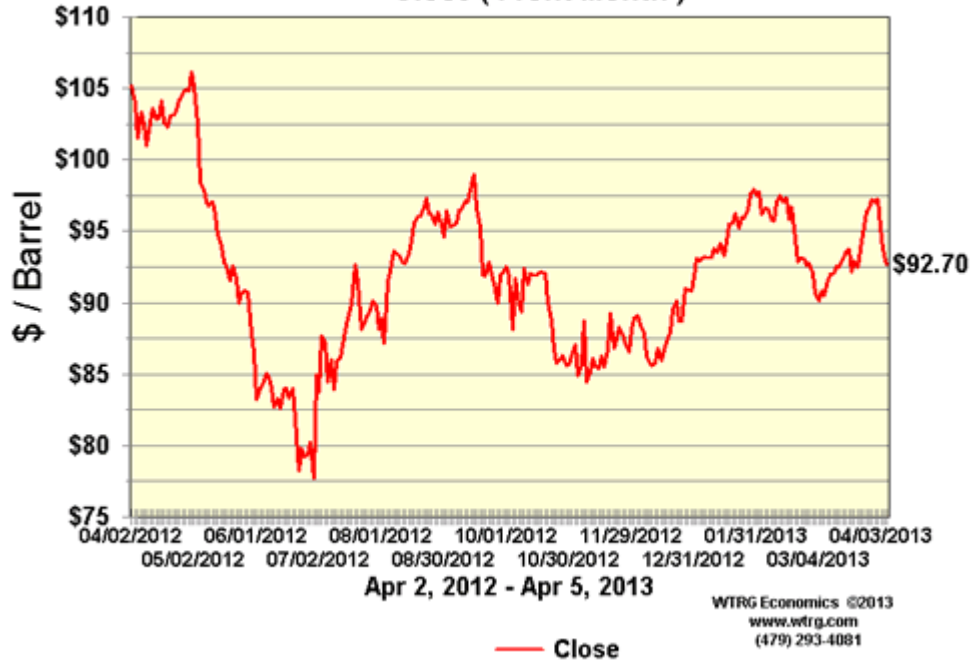
In London, the May IPE contract for North Sea Brent was down \$2.22 to \$104.12/bbl. Gas oil for April continued its retreat, down \$8 to \$880/tonne.

The average price for the Organization of Petroleum Exporting Countries’ basket of 12 benchmark crudes fell \$1.11 to \$103.10/bbl. So far this year, OPEC’s basket price has averaged \$109.21/bbl, down from \$109.45/bbl for all of 2012.

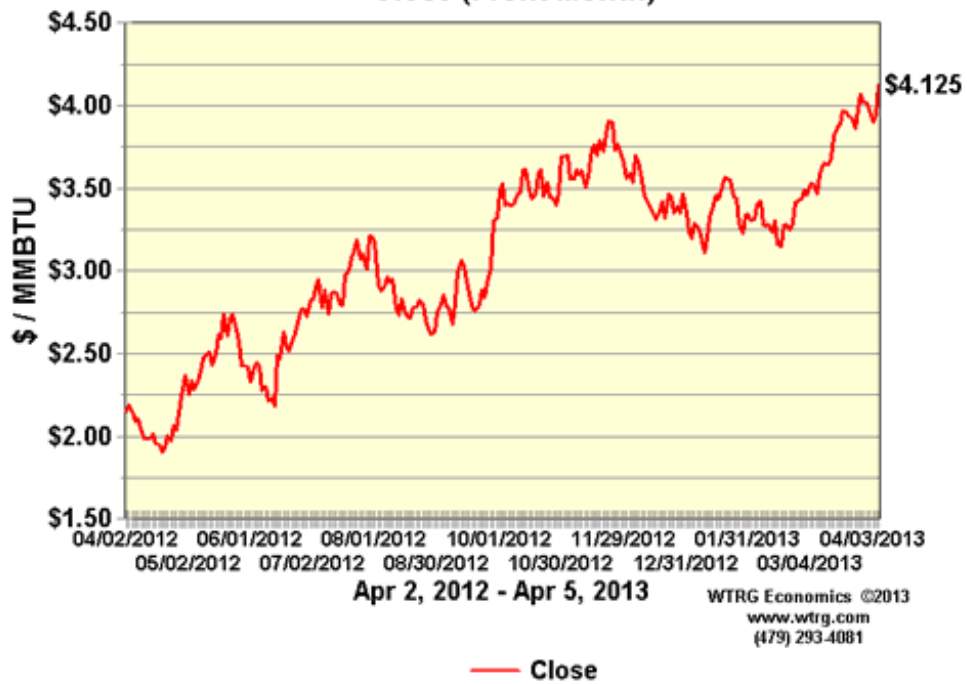


CURRENT PRICES

**NYMEX Crude Oil Futures
Close (Front Month)**



**NYMEX Natural Gas Futures
Close (Front Month)**



Future Meetings of Selected Earth Science Organizations

EVENT	2011	2012	2013	2014	2015
AAPG Annual Convention & Exhibition (ACE)	10–13 April Houston, TX	22–25 April Long Beach, CA	19–22 May Pittsburgh, PA	6–9 April Houston, TX	31 May–3 June Denver, CO
AAPG International Conference & Exhibition (ICE)	23–26 October Milan, Italy	September Singapore	8–11 September Cartagena, Colombia		
AAPG Prospect & Property Expo-London (APPEX)	1–3 March London, UK	6–8 March London, UK			
AAPG Annual Leadership Conference	12–14 August Boulder, CO				
AAPG Foundation Trustee Associates	7–11 September Lake Tahoe, CA	28 Oct–1 Nov Scottsdale, AZ			
AAPG European Region Conference					
AAPG Eastern Section	25–27 September Washington, D.C.	22–26 September Cleveland, OH			
AAPG Gulf Coast Section (GCAGS)	16–19 October Veracruz, Mexico	21–23 October Austin, TX	Sept–Oct TBD New Orleans, LA	Sept–Oct TBD Lafayette, LA	Sept–Oct TBD Houston, TX
AAPG Mid-Continent Section	1–4 October Oklahoma City, OK				
AAPG Pacific Section	9–11 May Anchorage, AK	22–25 April Long Beach, CA			
AAPG Rocky Mountain Section (RMS)	26–29 June Cheyenne, WY	9–12 September Grand Junction, CO	TBD Salt Lake City, UT	TBD Denver, CO	
AAPG Southwest Section	5–7 June Ruidoso, NM	19–22 May Ft. Worth, TX			
AAPG Polar Petroleum Potential (3P)	30 Aug–2 Sept Halifax, Nova Scotia				
American Association of Petroleum Landmen (AAPL) Annual Meeting	8–11 June Boston, MA				
Arctic Technology Conference (OTC) <i>New!</i>	7–9 February Houston, TX	3–5 December Houston, TX			
Asia Pacific Oil & Gas Conference (SPE)	20–22 September Jakarta, Indonesia	22–24 October Perth, Australia			
Association of Environmental & Engineering Geologists (AEG)	19–24 September Anchorage, AK	TBD Salt Lake City, UT	TBD Seattle, WA		
Canadian Society of Petroleum Geologists (CSPG), Canadian Society of Exploration Geoscientists (CSEG), & Canadian Well Logging Society (CWLS)	9–13 May Calgary, AB, Canada				
European Assoc. of Geoscientists and Engineers (EAGE)	23–26 May Vienna, Austria	4–7 June Copenhagen, Denmark	9–14 June London, UK		
GEO India — South Asian Geosciences Conference & Exhibition	12–14 January New Delhi, India	Not Held			
GEO Middle East Geosciences Conference and Exhibition	Not Held	4–7 March Bahrain	Not Held		
Geological Assoc. of Canada/ Mineralogical Assoc. of Canada Annual Meeting	25–27 May Ottawa, ON, Canada	27–29 May St. John's, NL, Canada	22–24 May Winnipeg, MB, Canada		
Geological Society of America (GSA)	9–12 October Minneapolis, MN	4–7 November Charlotte, NC	27–30 October Denver, CO		
IPTC – International Petroleum Technology Conference (AAPG/EAGE/SEG/SPE)	15–17 November Bangkok, Thailand	5–7 December Beijing, China	2–4 December Doha, Qatar	TBD Kuala Lumpur, Malaysia	
National Association of Black Geologists & Geophysicist (NABGG)	7–10 September San Francisco, CA				
NAPE – North American Prospect Expo (AAPL) – Winter	16–18 February Houston, TX	22–24 February Houston, TX			
NAPE – North American Prospect Expo (AAPL) – Summer	17–19 August Houston, TX				
OTC – Offshore Technology Conference (SPE)	2–5 May Houston, TX	30 April–3 May Houston, TX	6–9 May Houston, TX	5–8 May Houston, TX	
PETEX (PESGB)	Not Held				
Society of Exploration Geophysicists (SEG)	18–23 September San Antonio, TX	4–9 November Las Vegas, NV	22–27 September Houston, TX	26–31 October Denver, CO	
Society of Independent Earth Scientists (SIPES)	20–23 June Jackson Hole, WY				
Society of Petroleum Engineers (SPE)	30 Oct–2 Nov Denver, CO	8–10 October San Antonio, TX	30 Sept–2 Oct New Orleans, LA		
Society of Professional Well Log Analysts (SPWLA)	14–18 May Colorado Springs, CO				

Shaded boxes indicate that all aspects of meeting are managed by the American Association of Petroleum Geologists
Global Development and Conventions Department
P.O. Box 979, Tulsa, Oklahoma 74101-0979 USA +1 918 560 2679
Updated 14 July 2011 / Dates are subject to change

GEO LINK POST

USGS TAPESTRY OF TIME AND TERRAIN <http://tapestry.usgs.gov> The CCGS is donating to all of the 5th and 6th grade schools in the Coastal Bend. Check it out—it is a spectacular map. You might want a framed one for your own office. The one in my office has glass and a metal frame, and it cost \$400 and it does not look as good as the ones we are giving to the schools. Call Owen 510-6224 if you want one for your office for \$150. Duncan, Mike, Chris, Dave, Bob Randy, Seb., Kevin, Ken, Craig, Patrick, Robert.

FREE TEXAS TOPO'S <http://www.tnris.state.tx.us/digital.htm> these are TIFF files from your state government that can be downloaded and printed. You can add them to SMT by converting them first in Globalmapper. Other digital data as well.

FREE NATIONAL TOPO'S [http://store.usgs.gov/b2c_usgs/b2c/start/\(xcm=r3standardpitrex_prd\)/.do](http://store.usgs.gov/b2c_usgs/b2c/start/(xcm=r3standardpitrex_prd)/.do) go to this webpage and look on the extreme right side to the box titled TOPO MAPS DOWNLOAD TOPO MAPS FREE.

<http://www.geographynetwork.com/> Go here and try their top 5 map services. My favorite is 'USGS Elevation Date.' Zoom in on your favorite places and see great shaded relief images. One of my favorites is the Great Sand Dunes National Park in south central Colorado. Nice Dunes.

<http://antwrp.gsfc.nasa.gov/apod/astropix.html> Astronomy picture of the day — awesome. I click this page everyday.

<http://www.spacimaging.com/gallery/ioweek/iow.htm> Amazing satellite images. Check out the gallery.

<http://www.ngdc.noaa.gov/seg/topo/globegal.shtml> More great maps to share with kids and students.

www.geo.org Don't forget we have our own web page.

<http://micro.magneet.fsu.edu/primer/java/scienceoptiscu/owersof10/>

<http://asterweb.jpl.nasa.gov/gallery/default.htm> Great satellite images of volcanoes

<http://terra.nasa.gov/gallery/> More here

www.ermapper.com They have a great free downloadable viewer for TIFF and other graphic files called ER Viewer.

www.drillinginfo.com This is an incredible (subscription) well and completion data service for independents. Can be demo'ed for free.

<http://terraserver.com/> Go here to download free aerial photo images that can be plotted under your digital land and well data. Images down to 1 meter resolution, searchable by Lat Long coordinate. Useful for resolving well location questions.

<http://www.fs.fed.us/gpnl/volcanocams/msh/> This is a live cam of Mt. St. Helens refreshed every 5 minutes. At the bottom are old videos of past eruptions in this cycle. It is worth a watch especially now.



GEOLOGY POST

ARTICLES, PAPERS or NEWS?

ATTENTION!!!!!! Industry, Professors and Students:

We would like to include more content from the industry and our schools.

Submissions can include anything from professional papers, thesis abstracts, job opportunities to pictures. Anything!!!!

If you have any information or news you would like to share with the Society **PLEASE** email them to the MGS Editor at:

mcaton@tellusoperating.com

Thanks & Regards,

Matt Caton
Editor



MGS HONORARY MEMBERS

Esther Applin*

Verne Culbertson *

David C. Harrell*

Dudley J. Hughes

Walter P. Jones*

Winnie McGlammery*

Maurice E. Miesse*

Marvin E. Norman*

Thurston Connell Rader*

Henry Toler*

Charles H. Williams

David Cate

Paul Applin*

H. Leroy Francis*

Oleta R. Harrell*

Urban B. Hughes*

Harold Karges*

Thomas McGlothin*

Emil Monsour*

Marvin L. Oxley*

Baxter Smith*

H. Vaughn Watkins

Jerry Zoble

Lawrence F. Boland*

Jim Furrh*

Ralph Hines

Wendell B. Johnson *

Wilbur H. Knight*

Frederic F. Mellen*

William H. Moore*

Richard R. Priddy*

Harry V. Spooner

Stewart W. Welch*

Julius Ridgeway

*** deceased**

MEMBERSHIP APPLICATION / RENEWAL FORM

MISSISSIPPI GEOLOGICAL SOCIETY

P.O. BOX 422, JACKSON, MISSISSIPPI 39205-0422

2012-2013

Membership year is June through May

New Membership (\$20/yr)_____ Renewal (\$20/yr)_____ Student (FREE)_____ Associate (\$20/yr)_____

Boland Scholarship Fund Donation \$_____ Total Amount Enclosed \$_____

Last Name:_____ First:_____ MI:_____

Mailing Address:_____

Office Phone:_____ Home Phone:_____ FAX:_____

E-mail Address: _____

College/University Attended: _____

Degree(s) Obtained and Year(s) Awarded: _____

Professional Associations, Certifications, & Licenses: _____



2012-2013 MGS MEMBERS

John Ables	Ken Adams	Chris Bowen	Ken McCarley
O Bill Bagnall	Larry Baria	Roger Chapman	James Landrem
O Neil Barnes	Randy Bissell	Tom Giosa	Thang Pham
Maurice Birdwell	Terry Bryant	Mitchell McMillan	William Potthoff
Robert Branson	Alvin Byrd	Tom McMillan Jr.	Gary Slade
O Matt Caton	Dave Cate	Armando Ricci	Michael Spooner
Sara Davis	Phil Cook	Larry Baria	Ed Stricker
Dave Easom	Chris Franks	Michael Bograd	Don Smith
O Jim Files	Bob Gaston	Lynn Boone	Andrew Sylte
O Todd Hines	David Handcock	Alvin Byrd	Erik Tangumonkem
O Joe Johnson	Bernard Holman	J C Carlisle	Mike Taylor
James Landrem	Joe McDuff	Charles Doubek	Janet Verret
Ken McCarley	Phillip Meadows	Jak Douglas	Steve Walker
Shawn Pool	Bob McElroy	Dave Easom	Fred Walsh
Philip Reeves	Maurice Meylan	Rick Ericksen	Rob Weyman
Bob Schneeflock	James Michael	Mary Giesler	Bradley Winton
Howard Samsel	Jack Moody	Frank Heitmuller	Karl Kaufman
Don Smith	Charlie Morrison	I. Meade Hufford	Michelle Chezem
George Smith	Jim Nix	Kevin Jefferys	Charles Coney
Jim Stephens	James Norris	Arthur Johnson	Jamie Crawford
John Sullivan	Billy Powell	Jim Johnson	Paul Gribas
Tom Sylte	Thomas Seitz	Lars Johnson	Charles Smith
Mike Taylor	George Self	Barbara Kearney	Lindsey Stewart
Sid Thompson	Jimmy Sparks	Cody Lenert	Karl Kaufman
Steve Walkinshaw	Tony Stuart	Michael Lieser	Kyle Carlton
Johnny Holifield	Stan Thieling	Ken Magee	Jo Everett
Joe White			David Thompson

*This list is updated on a monthly basis.

MGS ADVERTISING ORDER FORM

September 2012 – May 2013

I. Bulletin Advertisements:

<u>Size</u>	<u>Rate/Year</u>	<u>Amt. Remitted</u>
Full Page Ad (6" x 8")	\$500	\$ _____
1/2 Page Ad (6" x 4")	\$300	\$ _____
1/4 Page Ad (3" x 4")	\$200	\$ _____
Business Card Ad (1 1/2" x 3")	\$100	\$ _____
Professional Listing (1/2" x 3")	\$ 50	\$ _____

II. Web Page Advertisements (www.missgeo.com):

<u>Type of Web Page Ad</u>	<u>Rate/Year</u>	<u>Amt. Remitted</u>
Front Page Sponsor (Banner Ad – limit of 5)	\$500	\$ _____
Second Page Banner Ad	\$250	\$ _____
Professional Listing/Link	\$100	\$ _____

(Note: Please contact Steve Walkinshaw at (601) 607-3227 or mail@visionexploration.com for details concerning placing your ad on the MGS web site.)

Total Remitted \$ _____

Please make checks payable to the Mississippi Geological Society. If you have any questions, contact Matt Caton at (601) 898-7444 or mcaton@tellusoperating.com

SEI®

SEISMIC EXCHANGE, INC.

201 St. Charles Ave., Suite 4300
New Orleans, LA 70170-4300
(504) 581-7153 • Fax (504) 581-9591

HOWARD PATTON

PRUET OIL COMPANY, LLC

OIL & GAS EXPLORATION

217 WEST CAPITOL STREET
JACKSON, MS 39201

OFFICE: (601) 948-5279 Fax: (601) 944-1281

W. LESTER AULTMAN

125 South Congress St., Suite 1212, Jackson, MS 39201
Office (601) 353-2738 Res. (601) 924-4830

VANTAGE OIL COMPANY

1710 Tank Road (601) 878-0593
Terry, MS 39170



BEAN RESOURCES, INC.

THOMAS A. GIOSA
Geologist

P. O. Box 52768 (70505)
1000 E. St. Mary Blvd.
Lafayette, La. 70503

Off. (337) 234-2326
Fax (337) 234-2330
Cell (337) 288-4089

BRUNINI

WATTS C. UELTSCHY

OFFICE (601) 960-6871 | FAX (601) 960-6902

E-MAIL WATTS@BRUNINI.COM | WWW.BRUNINI.COM

BRUNINI, GRANTHAM, GROWER & HEWES, PLLC
ATTORNEYS AT LAW

190 EAST CAPITOL STREET SUITE 100 JACKSON, MS 39201
MAILING ADDRESS: P.O. DRAWER 119 JACKSON, MS 39205



Day Dreams Resources, LLC

Jerry P. Ogden

OIL AND GAS EXPLORATION AND PRODUCTION
CONSULTING PETROLEUM ENGINEER

Jerry P. Ogden, Pet. Eng.
P. O. Box 101
Natchez, MS 39121
email: ogdenjerry@bellsouth.net

Office (601) 446-8105
Fax (601) 446-8844
Cell (601) 807-1000



EXPLORATION, L.L.C.

401 Edwards Street, Suite 1200
Shreveport, LA 71101

P.O. Box 1367
Shreveport, LA 71164

office: (318) 222-8406
fax: (318) 222-6061
email: mei@marlinexploration.com

Jon Q=Petersen
President

S. Cody Lenert
Geologist

Autie T. Orjias
V.P./Land Manager

Ryan Q=Petersen
Land

Dean Giles
Secretary/Treasurer

Rhonda White
Admin. Assistant

Joe R. White, Jr.
Chief Geologist



Jason Stockstill
Marketing Representative

DAWSON GEOPHYSICAL COMPANY

508 West Wall, Suite 800
Midland, Texas 79701-5010
Telephone 432/684-3000
Fax 432/684-3030
Cell 432/967-4099

e-mail: stockstill@dawson3d.com



ENERGY DRILLING COMPANY [®]

CONTRACT DRILLING 3000 – 15,000 FEET
MS-AL-FL-ARK-LA-TEX

Pat Burns, Jr.

Jody Helbling

Nestor Navarro

601-446-5259

(Fax)601-446-8607

P. O. Box 905

413 Liberty Rd.

Natchez, MS 39121



OPERATING GROUP, LLC

OPERATING GROUP, LLC

602 Crescent Place, Suite 100

Ridgeland, MS 39157

601-898-7444 Voice

601-898-7446 Fax

BRIAN SIMS

EXPLOITATION GEOLOGIC MANAGER

Email: bsims@tellusoperating.com

OWLCO

Oil Well Logging Company
P. O. Box 1692
Madison, MS 39130
(601) 477-8315



MOCO INC.
The Mississippi Oil Company

MICHAEL L. BLACKWELL
H. DON NOBLITT

603 Northpark Drive • Ridgeland, MS 39157
(601) 957-3550



Karl J. Kaufmann
President

Suite B
546 Keyway Drive
Jackson, MS 39232

601-936-3601
Fax 601-936-3646
coukauf@aol.com

BLAIR & BONDURANT, P.A.
ATTORNEYS AT LAW

WILLIAM F. BLAIR

P.O. Box 321423 1368 Old Fannin Road
Jackson, MS 39232 Suite 300
Telephone: (601) 992-4477 Brandon, MS 39047
Telecopier: (601) 992-9189 Email:



**TROPHY
PETROLEUM
CORPORATION**

100 N. Van Buren Street
Post Office Box 415
Carthage, MS 39051
(601) 298-0200 (601) 298-0201 Fax

E. Wayne Upchurch
President



John G. Cox
Petroleum Geologist

John G. Cox
Geologist

603 Northpark Drive, Suite 300 601.978.1763
Ridgeland, Mississippi 39157 fax 601.952.0425
john_cox@bellsouth.net

BRUXOIL, INC.

DAVID K. BROOKS - PRESIDENT
RAYMOND A. HELFRICH - VICE PRESIDENT
DOROTHY M. JAUBERT

P. O. Box 16929
Jackson, MS 39236
(601) 981-5722
FAX: (601) 366-9490



ROUNDTREE & ASSOCIATES, INC.
OIL AND GAS PRODUCTION
210 Trace Colony Park Drive,
Ridgeland, MS 39157
Phone (601) 355-4530

MOON & HINES
OIL & GAS EXPLORATION

MOON-HINES-TIGRETT OPERATING CO., INC.
PROPERTY MANAGEMENT

P O BOX 3216
RIDGELAND, MS 39158

OFFICE (601) 572-8300 FAX (601) 572-8310



KELTON OPERATING COMPANY, INC.
since 1953

605 SUN TRUST TOWER
220 W. GARDEN STREET
PENSACOLA, FL 32501
P. O. BOX 230
PENSACOLA, FL 32591

TELEPHONE
(850) 434-6830
FACSIMILE
(850) 434-6842

Boone  **Exploration, Inc.**

Lynn D. Boone
President

J.C. Carlisle
Vice President

21 Wire Road
P.O. Box 8660
Huntsville, TX 77340

Phone: 936-295-4066
Fax: 936-295-4042
Email: jcc9551@aol.com

Energy Land Services

Oil & Gas Leases

I. Meade Hufford, CPL

Owner

P. O. Box 302
144 Wharton Grove Ln
Weems, VA 22576

Phone: 804-438-5852
Fax: 804-438-9043
Cell: 713-705-7235
hufford1913@aol.com

JULIUS M. RIDGWAY

COASTAL EXPLORATION, INC.

1437 OLD SQUARE ROAD, #104
JACKSON, MISSISSIPPI 39211

601-362-0502
FAX: 601-362-5397

SPOONER PETROLEUM COMPANY

210 East Capitol St., Suite 956
Jackson, Mississippi 39201

**Oil & Gas Production & Exploration
Contract Operations**

601-969-1831

JAMES B. FURRH, Jr., Inc.

Oil & Gas Exploration

4450 Old Canton Road, Suite 205,
Jackson, MS 39211
Phone (601) 982-9393 Fax (601) 982-9785

E. GEOFFREY JEFFREYS

Petroleum Consultant

OIL, GAS AND MINERAL APPRAISALS

115 Fairway Drive
Daphne, AL 36526
egjeffreys@aol.com

Off (251) 621-1850
Fx (251) 621-1630
Cell (251) 709-7919

Bryant Miller

1837 Peachtree Street
Jackson, MS 39202
bryantgmiller@bryantgmiller.com

ENERGEN
RESOURCES

President & COO

John Richardson

Senior Vice President

Operations

Paul Sparks

General Manager

Acquisitions & Engineering

Gene Cash

General Manager

Geology

Ron Tisdale

General Manager

Land

Paul Rote

(205)326-2721

Joseph H. McDuff
Geologist

351 Chapel Loop
Mandeville, LA 70471
985.845.9430

jhmcduff@charter.net



**Diversified Land
Management, Inc.**

**PERMIT ACQUISITION
SPECIALISTS**

Jack Tate

President

Office: 337.886.0060

Fax: 337.886.0064

Cell: 601.259.1366

email: geoagent46@aol.com

dminconline.com

"A company committed to excellence and achieving success while providing professional permitting acq. & project mngt. with the client's interests & concerns top priority"

Get More



Weatherford[®]

LABORATORIES

weatherfordlabs.com

© 2012 Weatherford. All rights reserved. Incorporates proprietary and patented Weatherford technology.

With reservoirs becoming increasingly complex, you need the most accurate information you can get to better understand your reservoir.

Weatherford Labs helps you get more from your core by combining an unsurpassed global team of geoscientists, engineers, technicians and researchers with the industry's most comprehensive, integrated laboratory services worldwide. From core analysis, sorption, geochemistry and isotopic composition to detailed basin modeling and comprehensive data packages, we provide you with real reservoir rock and fluid information that hasn't been distilled by a simulator or iterated by software.

We call it "The Ground Truth"[™] – giving you the accurate answers you need for better reservoir understanding. You'll call it a better return on your reservoir investment. To learn more, contact

TheGroundTruth@weatherfordlabs.com.

Denbury

5320 Legacy Drive
Plano, TX 75024

Denbury Resources, Inc.

Denbury Resources, Inc. is a growing independent oil and gas company. The Company is the largest oil and natural gas operator in Mississippi and Montana, owns the largest reserves of CO₂ used for tertiary oil recovery east of the Mississippi River, and holds significant operating acreage in the Rockies, Permian Basin, Mid-Continent and Gulf Coast. The Company's goal is to increase the value of acquired properties through a combination of exploitation, drilling and proven engineering extraction practices, with its most significant emphasis relating to tertiary recovery operations.

NYSE: DNR
www.denbury.com

Denbury Resources Inc.

**BRANCHING
OUT**



MGS PAST PRESIDENTS

1939-1940	Henry N. Toler	1973-1974	Larry Walter
1940-1941	Urban B. Hughes	1974-1975	W. E. "Gene" Taylor
1941-1942	J. Tom McGlothlin	1975-1976	Jerry E. Zoble
1942-1943	Dave C. Harrell	1976-1977	P. David Cate
1943-1944	K. K. "Bob" Spooner	1977-1978	Sarah Childress
1944-1945	L. R. McFarland	1978-1979	Les Aultman
1945-1946	J. B. Story	1979-1980	Philip R. Reeves
1946-1947	Frederic F. Mellen	1980-1981	Marshall Kern
1947-1948	H. Lee Spyles	1981-1982	Stephen Oivanki
	Robert D. Sprague	1982- 1983	James W. "Buddy" Twiner
1948-1949	Robert D. Sprague	1983- 1984	Charles H. Williams
1949-1950	E. T. "Mike" Monsour	1984- 1985	C. Kip Ferns
1950-1951	J. Tate Clark	1985-1986	Steven S. Walkinshaw
	Charles E. Buck	1986-1987	J. R. "Bob" White
1951-1952	George W. Field	1987-1988	Harry Spooner
1952-1953	James L. Md11in, Jr.	1988-1989	Stanley King
1953-1954	Wilbur H. Knight	1989-1990	Stan Galicki
1954-1955	A. Ed Blanton	1990-1991	E. James Files, Jr.
1955-1956	Gilbert A. Talley	1991-1992	Stephen L. Ingram, Sr.
1956-1957	Ben Ploch	1992-1993	Michael Noone/Stanley King
1957-1958	Emil Monsour	1993-1994	Brian Sims
1958-1959	Charles Brown	1994-1995	C. W. "Neil" Barnes
1959-1960	M. F. Kirby	1995-1996	Lester Aultman
1960-1961	Rudy Ewing	1996-1997	Jack S. Moody
1961-1962	Xavier M. Franscogna	1997-1998	George B. Vockroth
1962-1963	Robert B. Ross	1998-1999	Rick L. Ericksen
1963-1964	William A. Skees	1999-2000	Stanley King
	Marvin Oxley	2000-2001	John C. Marble
1964-1965	James F. Bollman	2001-2002	Andrew T. Sylte
1965-1966	Sankey L. Blanton	2002-2003	Aaron Lasker
1966-1967	Alan Jackson	2003-2004	John G. Cox
1967-1968	Julius M. Ridgway	2004-2005	James E. Starnes
1968-1969	Edward D. Minihan	2005-2006	Todd Hines
1969-1970	Kevin E. Cahill	2006-2007	Bob Schneeflock
1970-1971	John Lancaster	2007-2008	Tony Stuart
1971-1972	Larry Boland	2008-2009	Lisa Ivshin
		2009-2010	Joe Johnson
		2010-2011	Brian Sims
		2011-2012	Stanley King