



Volume 61

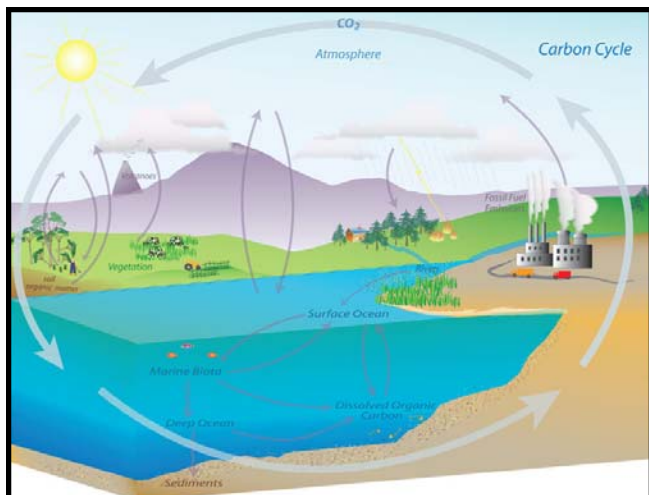
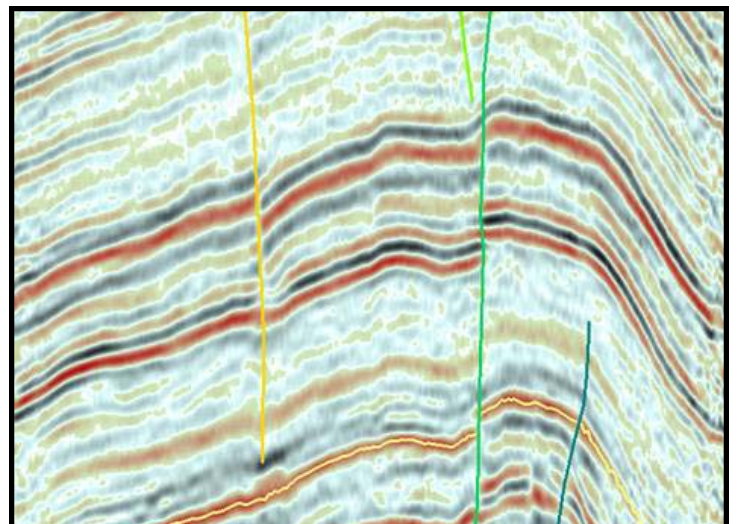
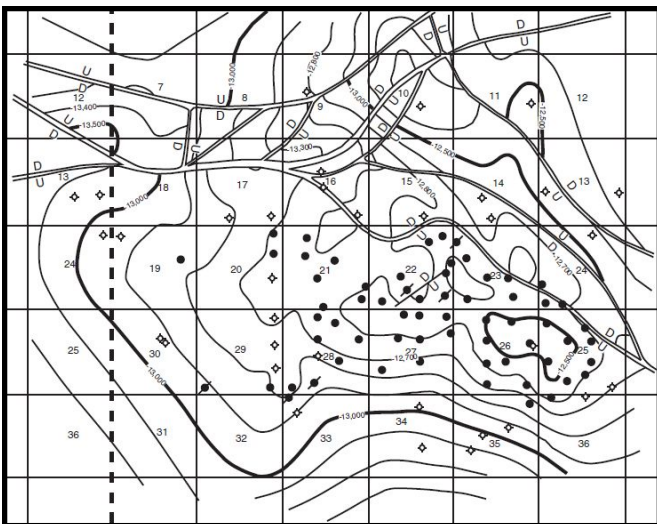
No. 7

March 2013



MISSISSIPPI GEOLOGICAL SOCIETY

eBULLETIN





MGS 2012-2013 BOARD OF DIRECTORS

Officers

President	Jim Files	Independent	jfgd@comcast.net	(601) 853-0701
1st Vice President	Neil Barnes	Tellus Operating	nbarnes@tellusoperating.com	(601) 898-7444
2nd Vice President	Joe Johnson	Tellus Operating	jjohnson@tellusoperating.com	(601) 898-7444
Secretary	Todd Hines	Moon-Hines	thines1360@aol.com	(601) 572-8300
Treasurer	Bill Bagnall	BLM	wbagnall@blm.gov	(601)-977-5417
Webmaster	Steve Walkinshaw	Vision Exploration	steve@visionexploration.com	(601) 607-3227
Advertising	Matt Caton	Tellus Operating	mcaton@tellusoperating.com	(601) 898-7444
Editor	Matt Caton	Tellus Operating	mgs@treetop.us.com	(601) 898-7444

Boland Scholarship

President	Neil Barnes	Tellus Operating	(601) 898-7444
Secretary	Dave Cate	Pruet Oil	(601) 948-5279
Members	Ray Lewand		
	Tony Stuart	Venture Oil & Gas	(601) 428-7725
	James Starnes	DEQ	
	Bob Schneeflock	Geodigital Consulting	(601) 853-0701

Honorary Membership

Chairman	Charles H. Williams, Jr. Vaughey & Vaughey		(601) 982-1212
Members	Dudley J. Hughes	Hughes South Corp.	(601) 420-9892
	E. Ralph Hines	Moon-Hines	(601) 572-8300
	Jerry Zoble	Independent	

MGS Representatives

AAPG	Maurice Birdwell	Independent	(601) 936-6939
GCAGS	Danny Harrelson	U.S. Army R&D	(601) 634-2685

Other

Environmental	Ken Ruckstuhl	Environmental Mgt.	(601) 992-8233
Historian	Stanley King	Independent	(601) 842-3539



PRESIDENT'S LETTER

Jim Files

MGS Members,

Sorry I was unable to attend the last meeting as I was out of town. I the know the Lower Tuscaloosa shale talk was a good one.

If someone desires to serve on the MGS board next year, or would like to nominate someone, this would be a good time to let a present board member know.

I look forward to seeing you all at the meeting next week.

Cheers,

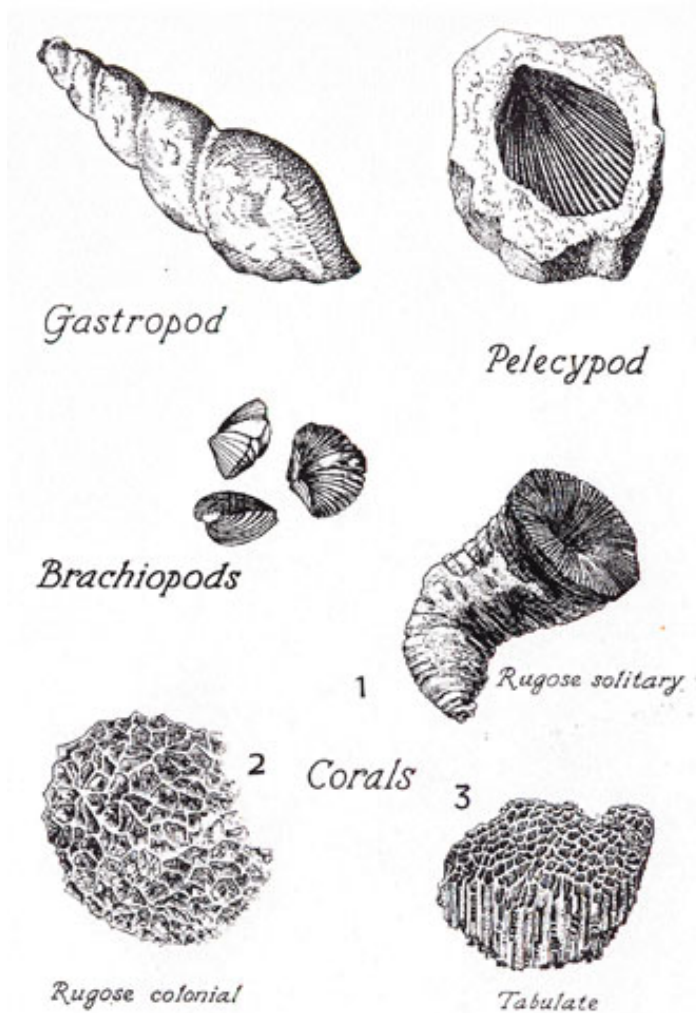
Jim



Happy St.Patrick's Day !

MGS MEETING SCHEDULE

When	What/Who	Where
September 13, 2012	Fall BBQ	Jackson Yacht Club-5:30pm
October 4, 2012	Steve Walkinshaw The Lower Brown Dense Lime Trend	River Hills – 11:30am
November 8, 2012	Morgan Brown Prestack Depth Migration for “Easy” Onshore Plays	River Hills – 11:30am
December 1, 2012	Christmas Party and Dance	Colonial Country Club
January 10, 2013	Dr. Lesli Wood Tuscaloosa Depositional Systems	River Hills – 11:30am
February 14, 2013	Kirk Barrell Tuscaloosa Marine Shale	River Hills – 11:30am
March 14, 2013	David Dockery Mississippi fossils as illustrated in “ <i>The Geology of Mississippi</i> ”	River Hills – 11:30am
April 11, 2013	Boland Scholarship Awards	River Hills – 11:30am
May 9, 2013	Spring Fling	Jackson Yacht Club– 5:30pm



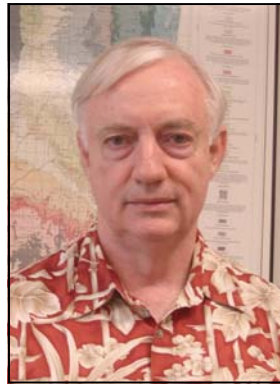
OFFICERS MEETINGS

August 4, 2012
September 6, 2012
September 27, 2012
November 1, 2012
December 6, 2012
January 3, 2013
February 7, 2013
March 7, 2013
April 4, 2013
May 2, 2013



MARCH SPEAKER

David Dockery



David Dockery

Ph.D. Tulane University - Paleontology
Chief - Surface Geology - MS Office of Geology
Adjunct Professor - Millsaps College, Hinds CC
Recipient - Gilbert Harris Award - Paleontology
SEPM Distinguished Service Award
12 Patronyms (named fossils)
269 Publications

Mississippi fossils as illustrated in “*The Geology of Mississippi*”

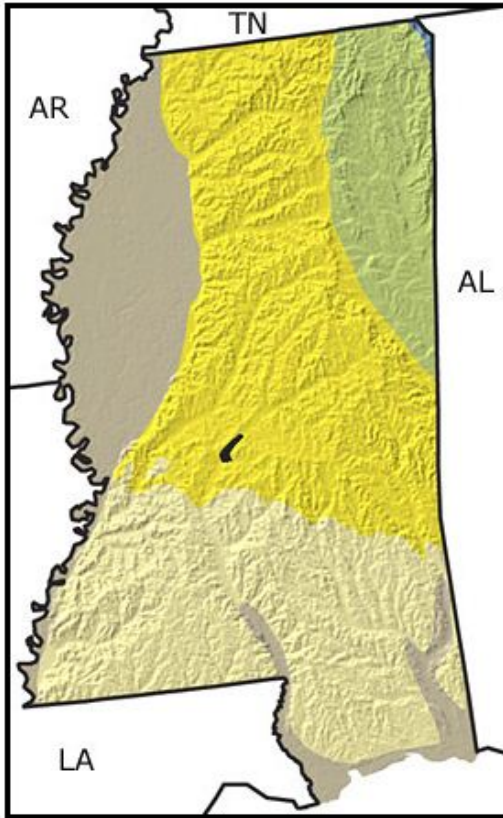
The Geology of Mississippi volume is a half-million-word book that is laid out in a compact form, containing about 700-full-color pages with about 1,100 figures. It was written to be an encyclopedic source of information on the state’s geology. The publication is tentatively planned to be done through the University Press of Mississippi in hard cover and with stitched signatures. The many illustrations include diagrams, cross sections, geologic maps, outcrop pictures, cores, and, of course, fossils. A selection of the state’s fossils from Devonian to Pleistocene age, will be presented along with pictures of the outcrops where they were found. These finds include a number of dinosaur remains, fossil whales including one with four legs, large early Tertiary land mammals, ice-age mammals, and lots of marine invertebrate fossils. Though most might not consider the state to be destination for fossil collecting, paleontologists from around the world have conducted research in Mississippi. The state is outstanding among worldwide localities in its Late Cretaceous, Middle and Late Eocene, and Early Oligocene marine invertebrates.





INFORMATION

The Paleontology Portal



[SHOW](#) interstates

Choose a time period:

- [Quaternary](#)
- [Tertiary](#)
- [Cretaceous](#)
- [Jurassic](#)
- [Triassic](#)
- [Permian](#)
- [Carboniferous](#)
- [Devonian](#)
- [Silurian](#)
- [Ordovician](#)
- [Cambrian](#)
- [Precambrian](#)

[SHOW](#) Dates (mya)

[Time Scale Legend](#)

State Fossil:



Basilosaurus and Zygorhiza

Both of these early whales were hunting in the warm seas that extended over the Gulf Coast states during the Eocene (~ 50-40 million years ago). *Basilosaurus* (top) had a narrow, streamlined body, ~ 24 m long. *Zygorhiza* (bottom) was much smaller with a wider, more whale-like body.

[search fossil gallery](#)

Paleontology and geology

The Precambrian: There are no Precambrian rocks in Mississippi. The state, as such, did not exist during this time.

The Paleozoic: The youngest rocks found in Mississippi are marine in origin, formed during the Late Devonian. A sea with pockets of deep, oxygen-poor water covered the northeastern part of the state at this time. The fossils in these dark-colored rocks are primarily plant fragments and the remains of animals that could swim above the oxygen-starved depths. The sea continued to cover portions of the state into the later part of the Paleozoic and provided a home to molluscs, crinoids, brachiopods, and trilobites. During the Late Carboniferous, the water retreated as vast amounts of sediments were poured into the sea from the erosion of newly formed mountains. Forests of primitive trees and fern-like plants grew on the resulting broad coastal plains. By the end of the Paleozoic, the entire state was above sea level and exposed to erosion.

The Mesozoic: Mississippi remained above sea level for much of the Mesozoic. During the later part of this era, however, a shallow sea flooded the region as North and South America moved farther apart during the breakup of the supercontinent of Pangea. The rocks originally deposited as sediment on the floor of this sea contain abundant fossils of both invertebrates and vertebrates. Pieces of petrified wood are also common.

The Cenozoic: Warm, tropical seas periodically flooded southern Mississippi during the early part of the Cenozoic, while the northern part of the state remained above sea level. Marine fossils include whales, sharks, and bony fish, as well as numerous molluscs and other invertebrates. Fossilized wood found in northern Mississippi provides evidence of the forests and swamps that existed there at this time. In the Late Cenozoic, most of the state was covered by coastal plain and shallow sea. Glaciers far to the north of the state affected the climate and caused fluctuations in sea level. Blankets of wind-blown silt (loess) eroded from the Mississippi River floodplain cover large areas in the northwestern part of the state. Fossil shells of various terrestrial and freshwater molluscs, as well as the fossil bones of a number of terrestrial mammals, have been recovered from the loess deposits.



INFORMATION

Fracking Myths


ConocoPhillips
There's Power in Cooperation™

Monthly Natural Gas Update

February 2013

Join our conversation:



Dear joe,

Have you ever been surprised at how difficult it can be to get the simple truth about issues you care about? This is especially true in the digital age, when myths often seem to travel a whole lot faster than facts.

We want to help, so we've compiled this list of [myths and facts about hydraulic fracturing](#). We hope you'll bring these up the next time you find yourself in a conversation about "fracking."

For example:

- **Myth:** Hydraulic fracturing is a new technology.
- **Fact:** Hydraulic fracturing was first used commercially for well stimulation in 1949.

- **Myth:** Hydraulic fracturing is unregulated.
- **Fact:** It is highly regulated under local, state and federal laws for everything from well design to water disposal.

- **Myth:** Hydraulic fracturing contaminates drinking water.
- **Fact:** Hydraulic fracturing has been performed in more than 2 million applications since the late 1940s and there has not been one single confirmed case of water contamination related to hydraulic fracturing, according to the U.S. Environmental Protection Agency (EPA).

This is only a sampling of the myths and facts we've compiled at [PowerInCooperation.com](#). We hope you'll keep them handy.

Sincerely,

The ConocoPhillips Team



NEWS

MDEQ



The Mississippi Department of Environmental Quality (MDEQ) would like everyone to know they have started putting old Survey Bulletins online. These Bulletins are available through:

<http://www.deq.state.ms.us>

Below is a list of sample links you can copy/paste into your browser.

http://www.deq.state.ms.us/MDEQ.nsf/page/Geology_Bulletin131ATLASOFSHALLOWMISSISSIPPISALTDOMES?OpenDocument

http://www.deq.state.ms.us/MDEQ.nsf/page/Geology_Bulletin129StreptoneuranGastropodsTheCoffee_SandCampanianNEMS?OpenDocument

[http://www.deq.state.ms.us/MDEQ.nsf/pdf/Geology_Bulletin125/\\$File/Bulletin%20125.pdf?OpenElement](http://www.deq.state.ms.us/MDEQ.nsf/pdf/Geology_Bulletin125/$File/Bulletin%20125.pdf?OpenElement)

http://www.deq.state.ms.us/MDEQ.nsf/page/Geology_Bulletin123?OpenDocument

http://www.deq.state.ms.us/MDEQ.nsf/page/Geology_Bulletin100?OpenDocument

http://www.deq.state.ms.us/MDEQ.nsf/page/Geology_Bulletin23PaleozoicRocks?OpenDocument

http://www.deq.state.ms.us/MDEQ.nsf/page/Geology_Circular-RocksAndFossilsFoundInMississippiGravelDeposits?OpenDocument

http://www.deq.state.ms.us/MDEQ.nsf/page/Geology_Circular-WindowsIntoMississippi%E2%80%99sGeologicalPast?OpenDocument



BOLAND SCHOLARSHIP

Faculty & Students,

Next month the Mississippi Geological Society along with the Boland Scholarship Fund will honor the most outstanding overall students for the 2012-2013 year.

The Boland Scholarship Fund will award 1 student from each institution a check that rewards students for their hard work and dedication to the Geosciences and their community.

We're having a great year and look forward to seeing you at our next meeting.

Best Regards,

Matt Caton
Editor



THE UNIVERSITY OF
SOUTHERN
MISSISSIPPI

MILLSAPS
COLLEGE



BOLAND SCHOLARSHIP DONATIONS

MGS would like to thank the following individuals for their generous donations to the Boland Scholarship Fund.

Maurice Birdwell

Ken McCarley

George Smith

Maurice Meylan

Terry Bryant

Jim Michael

Chris Franks

Meade Hufford

Dave Cate

Jak Douglas

Paul Gribas

If you would like to make a donation please see Bill Bagnall at the monthly meetings, or you can send your contribution to the following address:

**Mississippi Geological Society
PO BOX 422
Jackson, MS 39205-0422**



MGS - J. Ishe Fund

Many thanks to the following people who have made generous contributions to the MGS - J Ishe Fund:

H. Vaughn Watkins

David K. Hancock

Lars Johnson

Paul J. Gribas

Armando Ricci

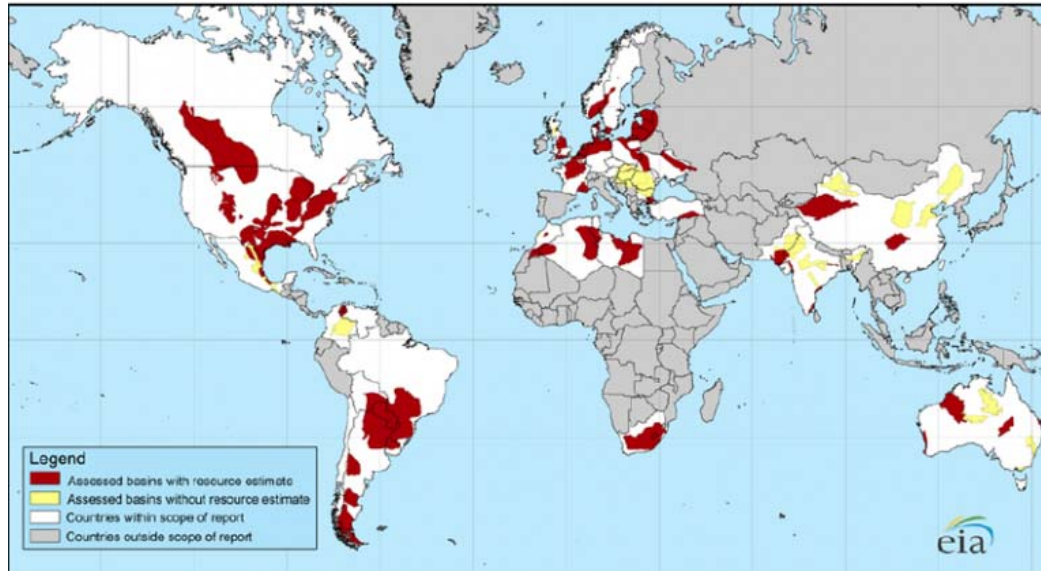
If you would like to make a donation please see Bill Bagnall at the next meeting, or you can mail your contribution to the following address:

**Mississippi Geological Society
J. Ishe Fund
PO Box 422
Jackson, MS 39205-0422**



ARTICLE OF THE MONTH

Will the Unconventional Revolution be a Global One?



Global demand for energy will increase an estimated 40 percent by 2030, according to some research agencies, but ExxonMobil forecasts that natural gas demand will grow by 55 percent between 2005 and 2030. With this increasing demand for energy, the global tight oil race has kicked-off with many industry leaders feeling that the unconventional revolution will be a global one, stated Bob Fryklund, vice president of energy research at IHS CERAWeek 2013 Tuesday. The countries leading the race, besides North America, are China, Australia, Europe, specifically Poland, Argentina, and parts of the Middle East, specifically Saudi Arabia.

While the United States has set the precedence of this revolution that has turned into an evolution, countries are actively exploring their own lands searching for a transformation that has revitalized the U.S. economy.

The global shale exploration, between 2008 to 2011, has the United States holding a record number of conventional exploration wells at 35,000; then Canada at 1,500; China and Europe tying at 60; South America at 40; and Australia at 30.

With the United States currently the largest player in unconventional, accounting for 45 percent of total gas production today, prices have bottomed out, causing consumers to get the cheapest natural gas price to date.

"Gas going forward will be the resource needed," stated Adil Toubia, CEO of Oil & Gas Division at Siemens Energy.



ARTICLE Continued.....

Natural gas is the fastest growing fossil fuel with unconventional gas such as shale and coal bed methane comprising 57 percent of all natural gas production by 2030. Globally, recoverable shale gas resources are estimated at 188 trillion cubic meters. The United States and Canada have proven that if the shale gas bubble can change the makeup of an economy, then it can revitalize Europe's crippling economy as well.

Recent analyses by Ernst & Young reveal that the largest reserves of shale gas in Europe lie in Poland.

Toubia commented that Poland is on the brink of a boom in fracking for shale gas. The country's reserves are estimated at about 22.45 trillion cubic meters (Tcm) of shale gas, with an estimated 5.3 Tcm of technically recoverable shale gas reserves. He stated that the country can be a key player in the revolution if officials can guarantee there will be no impact on water quality.

"Water treatment and waste water management are key in developing these resources," he said.

Another continent discussed in the global shale revolution was the Middle East, specifically Saudi Arabia. The country recently began its exploration quest for unconventional gas resources within the last year but it does not expect commercial production to start until at least 2020.

"As Saudi Arabia has proven time and time again, the country will persevere and prove that it can and will be a player in the unconventional gas wave," stated Toubia.

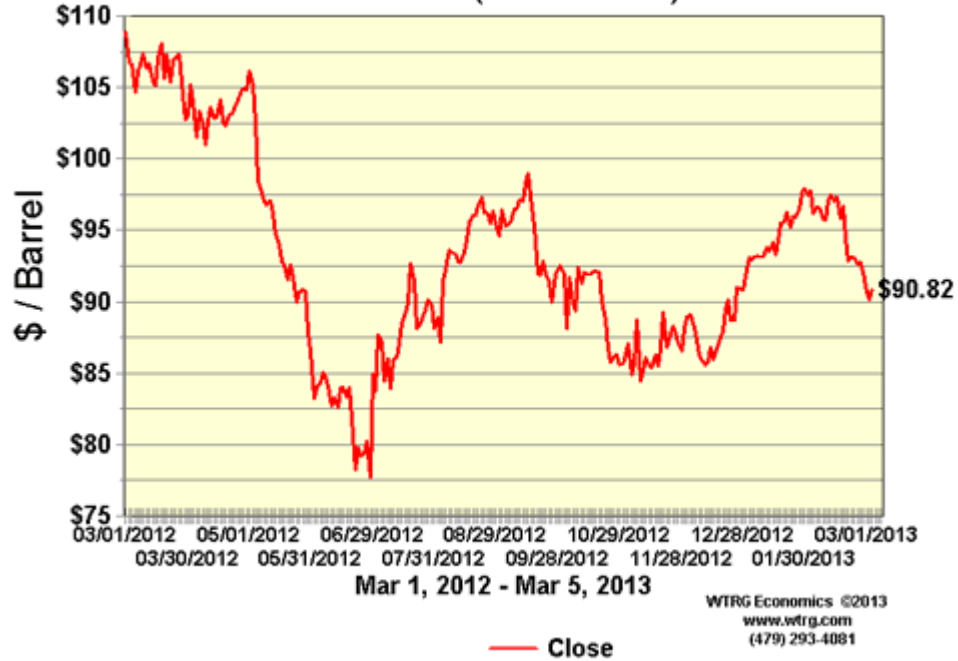
With the need for feedstock for petrochemical plants, Saudi Arabia is looking for ways to develop all of its resources. The country estimates that its unconventional gas resources could be five to 10 times as much as its conventional resources.

"The global demand for resources will increase and conventional resources will not be able to fill the gap," he noted. "Unconventionals have proven to be a huge global resource."

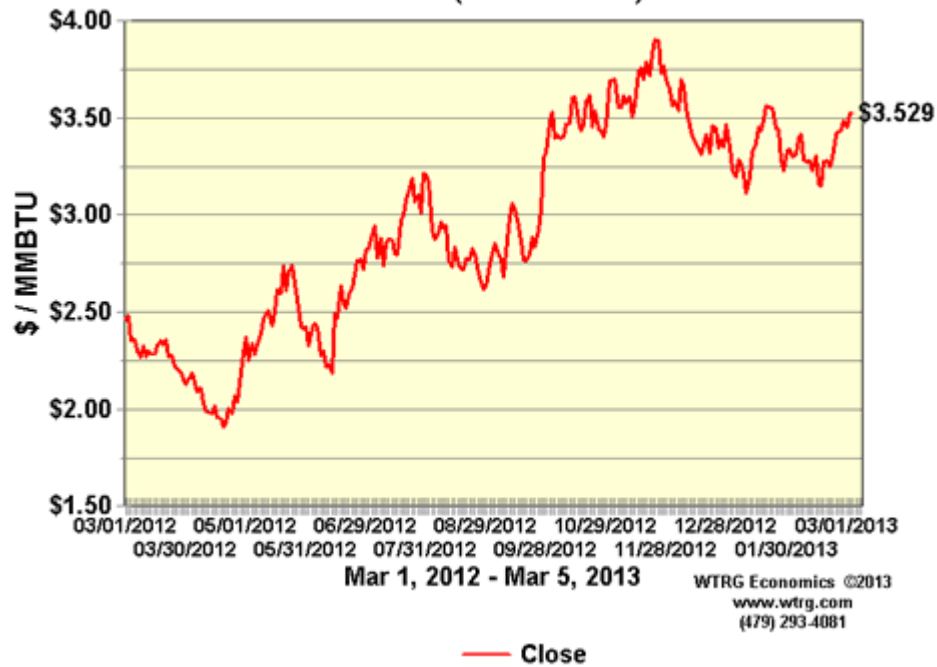


CURRENT PRICES

**NYMEX Crude Oil Futures
Close (Front Month)**



**NYMEX Natural Gas Futures
Close (Front Month)**



Future Meetings of Selected Earth Science Organizations

EVENT	2011	2012	2013	2014	2015
AAPG Annual Convention & Exhibition (ACE)	10–13 April Houston, TX	22–25 April Long Beach, CA	19–22 May Pittsburgh, PA	6–9 April Houston, TX	31 May–3 June Denver, CO
AAPG International Conference & Exhibition (ICE)	23–26 October Milan, Italy	September Singapore	8–11 September Cartagena, Colombia		
AAPG Prospect & Property Expo-London (APPEX)	1–3 March London, UK	6–8 March London, UK			
AAPG Annual Leadership Conference	12–14 August Boulder, CO				
AAPG Foundation Trustee Associates	7–11 September Lake Tahoe, CA	28 Oct–1 Nov Scottsdale, AZ			
AAPG European Region Conference					
AAPG Eastern Section	25–27 September Washington, D.C.	22–26 September Cleveland, OH			
AAPG Gulf Coast Section (GCAGS)	16–19 October Veracruz, Mexico	21–23 October Austin, TX	Sept–Oct TBD New Orleans, LA	Sept–Oct TBD Lafayette, LA	Sept–Oct TBD Houston, TX
AAPG Mid-Continent Section	1–4 October Oklahoma City, OK				
AAPG Pacific Section	9–11 May Anchorage, AK	22–25 April Long Beach, CA			
AAPG Rocky Mountain Section (RMS)	26–29 June Cheyenne, WY	9–12 September Grand Junction, CO	TBD Salt Lake City, UT	TBD Denver, CO	
AAPG Southwest Section	5–7 June Ruidoso, NM	19–22 May Ft. Worth, TX			
AAPG Polar Petroleum Potential (3P)	30 Aug–2 Sept Halifax, Nova Scotia				
American Association of Petroleum Landmen (AAPL) Annual Meeting	8–11 June Boston, MA				
Arctic Technology Conference (OTC) <i>New!</i>	7–9 February Houston, TX	3–5 December Houston, TX			
Asia Pacific Oil & Gas Conference (SPE)	20–22 September Jakarta, Indonesia	22–24 October Perth, Australia			
Association of Environmental & Engineering Geologists (AEG)	19–24 September Anchorage, AK	TBD Salt Lake City, UT	TBD Seattle, WA		
Canadian Society of Petroleum Geologists (CSPG), Canadian Society of Exploration Geoscientists (CSEG), & Canadian Well Logging Society (CWLS)	9–13 May Calgary, AB, Canada				
European Assoc. of Geoscientists and Engineers (EAGE)	23–26 May Vienna, Austria	4–7 June Copenhagen, Denmark	9–14 June London, UK		
GEO India — South Asian Geosciences Conference & Exhibition	12–14 January New Delhi, India	Not Held			
GEO Middle East Geosciences Conference and Exhibition	Not Held	4–7 March Bahrain	Not Held		
Geological Assoc. of Canada/ Mineralogical Assoc. of Canada Annual Meeting	25–27 May Ottawa, ON, Canada	27–29 May St. John's, NL, Canada	22–24 May Winnipeg, MB, Canada		
Geological Society of America (GSA)	9–12 October Minneapolis, MN	4–7 November Charlotte, NC	27–30 October Denver, CO		
IPTC – International Petroleum Technology Conference (AAPG/EAGE/SEG/SPE)	15–17 November Bangkok, Thailand	5–7 December Beijing, China	2–4 December Doha, Qatar	TBD Kuala Lumpur, Malaysia	
National Association of Black Geologists & Geophysicist (NABGG)	7–10 September San Francisco, CA				
NAPE – North American Prospect Expo (AAPL) – Winter	16–18 February Houston, TX	22–24 February Houston, TX			
NAPE – North American Prospect Expo (AAPL) – Summer	17–19 August Houston, TX				
OTC – Offshore Technology Conference (SPE)	2–5 May Houston, TX	30 April–3 May Houston, TX	6–9 May Houston, TX	5–8 May Houston, TX	
PETEX (PESGB)	Not Held				
Society of Exploration Geophysicists (SEG)	18–23 September San Antonio, TX	4–9 November Las Vegas, NV	22–27 September Houston, TX	26–31 October Denver, CO	
Society of Independent Earth Scientists (SIPES)	20–23 June Jackson Hole, WY				
Society of Petroleum Engineers (SPE)	30 Oct–2 Nov Denver, CO	8–10 October San Antonio, TX	30 Sept–2 Oct New Orleans, LA		
Society of Professional Well Log Analysts (SPWLA)	14–18 May Colorado Springs, CO				

Shaded boxes indicate that all aspects of meeting are managed by the American Association of Petroleum Geologists
Global Development and Conventions Department
P.O. Box 979, Tulsa, Oklahoma 74101-0979 USA +1 918 560 2679
Updated 14 July 2011 / Dates are subject to change

GEO LINK POST

USGS TAPESTRY OF TIME AND TERRAIN <http://tapestry.usgs.gov> The CCGS is donating to all of the 5th and 6th grade schools in the Coastal Bend. Check it out—it is a spectacular map. You might want a framed one for your own office. The one in my office has glass and a metal frame, and it cost \$400 and it does not look as good as the ones we are giving to the schools. Call Owen 510-6224 if you want one for your office for \$150. Duncan, Mike, Chris, Dave, Bob Randy, Seb., Kevin, Ken, Craig, Patrick, Robert.

FREE TEXAS TOPO'S <http://www.tnris.state.tx.us/digital.htm> these are TIFF files from your state government that can be downloaded and printed. You can add them to SMT by converting them first in Globalmapper. Other digital data as well.

FREE NATIONAL TOPO'S [http://store.usgs.gov/b2c_usgs/b2c/start/\(xcm=r3standardpitrex_prd\)/.do](http://store.usgs.gov/b2c_usgs/b2c/start/(xcm=r3standardpitrex_prd)/.do) go to this webpage and look on the extreme right side to the box titled TOPO MAPS DOWNLOAD TOPO MAPS FREE.

<http://www.geographynetwork.com/> Go here and try their top 5 map services. My favorite is 'USGS Elevation Date.' Zoom in on your favorite places and see great shaded relief images. One of my favorites is the Great Sand Dunes National Park in south central Colorado. Nice Dunes.

<http://antwrp.gsfc.nasa.gov/apod/astropix.html> Astronomy picture of the day — awesome. I click this page everyday.

<http://www.spacimaging.com/gallery/ioweek/iow.htm> Amazing satellite images. Check out the gallery.

<http://www.ngdc.noaa.gov/seg/topo/globegal.shtml> More great maps to share with kids and students.

www.geo.org Don't forget we have our own web page.

<http://micro.magneet.fsu.edu/primer/java/scienceoptiscu/owersof10/>

<http://asterweb.jpl.nasa.gov/gallery/default.htm> Great satellite images of volcanoes

<http://terra.nasa.gov/gallery/> More here

www.ermapper.com They have a great free downloadable viewer for TIFF and other graphic files called ER Viewer.

www.drillinginfo.com This is an incredible (subscription) well and completion data service for independents. Can be demo'ed for free.

<http://terrasrver.com/> Go here to download free aerial photo images that can be plotted under your digital land and well data. Images down to 1 meter resolution, searchable by Lat Long coordinate. Useful for resolving well location questions.

<http://www.fs.fed.us/gpnl/volcanocams/msh/> This is a live cam of Mt. St. Helens refreshed every 5 minutes. At the bottom are old videos of past eruptions in this cycle. It is worth a watch especially now.



GEOLOGY POST

ARTICLES, PAPERS or NEWS?

ATTENTION!!!!!! Industry, Professors and Students:

We would like to add a dedicated section that includes more content from the industry and our schools.

Submissions can include anything from professional papers, thesis abstracts, job opportunities to pictures. Anything!!!!

If you have any information or news you would like to share with the Society **PLEASE** email them to the MGS Editor at:

mcaton@tellusoperating.com

Thanks & Regards,

Matt Caton
Editor



MGS HONORARY MEMBERS

Esther Applin*

Verne Culbertson *

David C. Harrell*

Dudley J. Hughes

Walter P. Jones*

Winnie McGlammery*

Maurice E. Miesse*

Marvin E. Norman*

Thurston Connell Rader*

Henry Toler*

Charles H. Williams

David Cate

Paul Applin*

H. Leroy Francis*

Oleta R. Harrell*

Urban B. Hughes*

Harold Karges*

Thomas McGlothin*

Emil Monsour*

Marvin L. Oxley*

Baxter Smith*

H. Vaughn Watkins

Jerry Zoble

Lawrence F. Boland*

Jim Furrh*

Ralph Hines

Wendell B. Johnson *

Wilbur H. Knight*

Frederic F. Mellen*

William H. Moore*

Richard R. Priddy*

Harry V. Spooner

Stewart W. Welch*

Julius Ridgeway

*** deceased**

MEMBERSHIP APPLICATION / RENEWAL FORM

MISSISSIPPI GEOLOGICAL SOCIETY

P.O. BOX 422, JACKSON, MISSISSIPPI 39205-0422

2012-2013

Membership year is June through May

New Membership (\$20/yr)_____ Renewal (\$20/yr)_____ Student (FREE)_____ Associate (\$20/yr)_____

Boland Scholarship Fund Donation \$_____ Total Amount Enclosed \$_____

Last Name:_____ First:_____ MI:_____

Mailing Address:_____

Office Phone:_____ Home Phone:_____ FAX:_____

E-mail Address: _____

College/University Attended: _____

Degree(s) Obtained and Year(s) Awarded: _____

Professional Associations, Certifications, & Licenses: _____



2012-2013 MGS MEMBERS

John Ables	Ken Adams	Chris Bowen	Ken McCarley
O Bill Bagnall	Larry Baria	Roger Chapman	James Landrem
O Neil Barnes	Randy Bissell	Tom Giosa	Thang Pham
Maurice Birdwell	Terry Bryant	Mitchell McMillan	William Potthoff
Robert Branson	Alvin Byrd	Tom McMillan Jr.	Gary Slade
O Matt Caton	Dave Cate	Armando Ricci	Michael Spooner
Sara Davis	Phil Cook	Larry Baria	Ed Stricker
Dave Easom	Chris Franks	Michael Bograd	Don Smith
O Jim Files	Bob Gaston	Lynn Boone	Andrew Sylte
O Todd Hines	David Handcock	Alvin Byrd	Erik Tangumonkem
O Joe Johnson	Bernard Holman	J C Carlisle	Mike Taylor
James Landrem	Joe McDuff	Charles Doubek	Janet Verret
Ken McCarley	Phillip Meadows	Jak Douglas	Steve Walker
Shawn Pool	Bob McElroy	Dave Easom	Fred Walsh
Philip Reeves	Maurice Meylan	Rick Ericksen	Rob Weyman
Bob Schneeflock	James Michael	Mary Giesler	Bradley Winton
Howard Samsel	Jack Moody	Frank Heitmuller	Karl Kaufman
Don Smith	Charlie Morrison	I. Meade Hufford	Michelle Chezem
George Smith	Jim Nix	Kevin Jefferys	Charles Coney
Jim Stephens	James Norris	Arthur Johnson	Jamie Crawford
John Sullivan	Billy Powell	Jim Johnson	Paul Gribas
Tom Sylte	Thomas Seitz	Lars Johnson	Charles Smith
Mike Taylor	George Self	Barbara Kearney	Lindsey Stewart
Sid Thompson	Jimmy Sparks	Cody Lenert	Karl Kaufman
Steve Walkinshaw	Tony Stuart	Michael Lieser	
Johnny Holifield	Stan Thieling	Ken Magee	
Joe White			

*This list is updated on a monthly basis.

MGS ADVERTISING ORDER FORM

September 2012 – May 2013

I. Bulletin Advertisements:

<u>Size</u>	<u>Rate/Year</u>	<u>Amt. Remitted</u>
Full Page Ad (6" x 8")	\$500	\$ _____
1/2 Page Ad (6" x 4")	\$300	\$ _____
1/4 Page Ad (3" x 4")	\$200	\$ _____
Business Card Ad (1 1/2" x 3")	\$100	\$ _____
Professional Listing (1/2" x 3")	\$ 50	\$ _____

II. Web Page Advertisements (www.missgeo.com):

<u>Type of Web Page Ad</u>	<u>Rate/Year</u>	<u>Amt. Remitted</u>
Front Page Sponsor (Banner Ad – limit of 5)	\$500	\$ _____
Second Page Banner Ad	\$250	\$ _____
Professional Listing/Link	\$100	\$ _____

(Note: Please contact Steve Walkinshaw at (601) 607-3227 or mail@visionexploration.com for details concerning placing your ad on the MGS web site.)

Total Remitted \$ _____

Please make checks payable to the Mississippi Geological Society. If you have any questions, contact Matt Caton at (601) 898-7444 or mcaton@tellusoperating.com

SEI®

SEISMIC EXCHANGE, INC.

201 St. Charles Ave., Suite 4300
New Orleans, LA 70170-4300
(504) 581-7153 • Fax (504) 581-9591

HOWARD PATTON

PRUET OIL COMPANY, LLC

OIL & GAS EXPLORATION

217 WEST CAPITOL STREET
JACKSON, MS 39201

OFFICE: (601) 948-5279 Fax: (601) 944-1281

W. LESTER AULTMAN

125 South Congress St., Suite 1212, Jackson, MS 39201
Office (601) 353-2738 Res. (601) 924-4830

VANTAGE OIL COMPANY

1710 Tank Road (601) 878-0593
Terry, MS 39170



BEAN RESOURCES, INC.

THOMAS A. GIOSA
Geologist

P. O. Box 52768 (70505)
1000 E. St. Mary Blvd.
Lafayette, La. 70503

Off. (337) 234-2326
Fax (337) 234-2330
Cell (337) 288-4089

BRUNINI

WATTS C. UELTSCHY

OFFICE (601) 960-6871 | FAX (601) 960-6902

E-MAIL WATTS@BRUNINI.COM | WWW.BRUNINI.COM

BRUNINI, GRANTHAM, GROWER & HEWES, PLLC
ATTORNEYS AT LAW

190 EAST CAPITOL STREET SUITE 100 JACKSON, MS 39201
MAILING ADDRESS: P.O. DRAWER 119 JACKSON, MS 39205



Day Dreams Resources, LLC

Jerry P. Ogden

OIL AND GAS EXPLORATION AND PRODUCTION
CONSULTING PETROLEUM ENGINEER

Jerry P. Ogden, Pet. Eng.

P. O. Box 101
Natchez, MS 39121
email: ogdenjerry@bellsouth.net

Office (601) 446-8105
Fax (601) 446-8844
Cell (601) 807-1000



EXPLORATION, L.L.C.

401 Edwards Street, Suite 1200
Shreveport, LA 71101

P.O. Box 1367
Shreveport, LA 71164

office: (318) 222-8406
fax: (318) 222-6061
email: mei@marlinexploration.com

Jon Q=Petersen
President

S. Cody Lenert
Geologist

Autie T. Orjias
V.P./Land Manager

Ryan Q=Petersen
Land

Dean Giles
Secretary/Treasurer

Rhonda White
Admin. Assistant

Joe R. White, Jr.
Chief Geologist



Jason Stockstill
Marketing Representative

DAWSON GEOPHYSICAL COMPANY

508 West Wall, Suite 800
Midland, Texas 79701-5010
Telephone 432/684-3000
Fax 432/684-3030
Cell 432/967-4099

e-mail: stockstill@dawson3d.com



ENERGY DRILLING COMPANY [®]

CONTRACT DRILLING 3000 – 15,000 FEET
MS-AL-FL-ARK-LA-TEX

Pat Burns, Jr.

Jody Helbling

Nestor Navarro

601-446-5259

(Fax)601-446-8607

P. O. Box 905

413 Liberty Rd.

Natchez, MS 39121



OPERATING GROUP, LLC

OPERATING GROUP, LLC

602 Crescent Place, Suite 100

Ridgeland, MS 39157

601-898-7444 Voice

601-898-7446 Fax

BRIAN SIMS

EXPLOITATION GEOLOGIC MANAGER

Email: bsims@tellusoperating.com

OWLCO

Oil Well Logging Company

P. O. Box 1692
Madison, MS 39130

(601) 477-8315



MOCO INC.
The Mississippi Oil Company

MICHAEL L. BLACKWELL
H. DON NOBLITT

603 Northpark Drive • Ridgeland, MS 39157
(601) 957-3550



Karl J. Kaufmann
President

Suite B
546 Keyway Drive
Jackson, MS 39232

601-936-3601
Fax 601-936-3646
coukauf@aol.com

BLAIR & BONDURANT, P.A.
ATTORNEYS AT LAW

WILLIAM F. BLAIR

P.O. Box 321423 1368 Old Fannin Road
Jackson, MS 39232 Suite 300
Telephone: (601) 992-4477 Brandon, MS 39047
Telecopier: (601) 992-9189 Email:



**TROPHY
PETROLEUM
CORPORATION**

100 N. Van Buren Street
Post Office Box 415
Carthage, MS 39051
(601) 298-0200 (601) 298-0201 Fax

E. Wayne Upchurch
President



John G. Cox
Geologist

603 Northpark Drive, Suite 300 601.978.1763
Ridgeland, Mississippi 39157 fax 601.952.0425
john_cox@bellsouth.net

BRUXOIL, INC.

DAVID K. BROOKS - PRESIDENT
RAYMOND A. HELFRICH - VICE PRESIDENT
DOROTHY M. JAUBERT

P. O. Box 16929
Jackson, MS 39236
(601) 981-5722
FAX: (601) 366-9490



ROUNDTREE & ASSOCIATES, INC.
OIL AND GAS PRODUCTION
210 Trace Colony Park Drive,
Ridgeland, MS 39157
Phone (601) 355-4530

MOON & HINES
OIL & GAS EXPLORATION

MOON-HINES-TIGRETT OPERATING CO., INC.
PROPERTY MANAGEMENT

P O BOX 3216
RIDGELAND, MS 39158

OFFICE (601) 572-8300 FAX (601) 572-8310



KELTON OPERATING COMPANY, INC.
since 1953

605 SUN TRUST TOWER
220 W. GARDEN STREET
PENSACOLA, FL 32501
P.O. BOX 230
PENSACOLA, FL 32591

TELEPHONE
(850) 434-6830
FACSIMILE
(850) 434-6842

Boone  **Exploration, Inc.**

Lynn D. Boone
President

J.C. Carlisle
Vice President

21 Wire Road
P.O. Box 8660
Huntsville, TX 77340

Phone: 936-295-4066
Fax: 936-295-4042
Email: jcc9551@aol.com

Energy Land Services

Oil & Gas Leases

I. Meade Hufford, CPL

Owner

P. O. Box 302
144 Wharton Grove Ln
Weems, VA 22576

Phone: 804-438-5852
Fax: 804-438-9043
Cell: 713-705-7235
hufford1913@aol.com

JULIUS M. RIDGWAY

COASTAL EXPLORATION, INC.

1437 OLD SQUARE ROAD, #104
JACKSON, MISSISSIPPI 39211

601-362-0502
FAX: 601-362-5397

SPOONER PETROLEUM COMPANY

210 East Capitol St., Suite 956
Jackson, Mississippi 39201

**Oil & Gas Production & Exploration
Contract Operations**

601-969-1831

JAMES B. FURRH, Jr., Inc.

Oil & Gas Exploration

4450 Old Canton Road, Suite 205,
Jackson, MS 39211
Phone (601) 982-9393 Fax (601) 982-9785

E. GEOFFREY JEFFREYS

Petroleum Consultant

OIL, GAS AND MINERAL APPRAISALS

115 Fairway Drive
Daphne, AL 36526
egjeffreys@aol.com

Off (251) 621-1850
Fx (251) 621-1630
Cell (251) 709-7919

Bryant Miller

1837 Peachtree Street
Jackson, MS 39202

bryantgmiller@bryantgmiller.com

ENERGEN
RESOURCES

President & COO

John Richardson

Senior Vice President

Operations

Paul Sparks

General Manager

Acquisitions & Engineering

Gene Cash

General Manager

Geology

Ron Tisdale

General Manager

Land

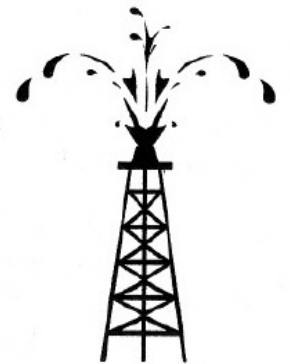
Paul Rote

(205)326-2721

Joseph H. McDuff
Geologist

351 Chapel Loop
Mandeville, LA 70471
985.845.9430

jhmcduff@charter.net



**Diversified Land
Management, Inc.**

**PERMIT ACQUISITION
SPECIALISTS**

Jack Tate

President

Office: 337.886.0060

Fax: 337.886.0064

Cell: 601.259.1366

email: geoagent46@aol.com

dminconline.com

"A company committed to excellence and achieving success while providing professional permitting acq. & project mngt. with the client's interests & concerns top priority"

Get More



from your Core



Weatherford®

LABORATORIES

weatherfordlabs.com

© 2012 Weatherford. All rights reserved. Incorporates proprietary and patented Weatherford technology.

With reservoirs becoming increasingly complex, you need the most accurate information you can get to better understand your reservoir.

Weatherford Labs helps you get more from your core by combining an unsurpassed global team of geoscientists, engineers, technicians and researchers with the industry's most comprehensive, integrated laboratory services worldwide. From core analysis, sorption, geochemistry and isotopic composition to detailed basin modeling and comprehensive data packages, we provide you with real reservoir rock and fluid information that hasn't been distilled by a simulator or iterated by software.

We call it "The Ground Truth™" – giving you the accurate answers you need for better reservoir understanding. You'll call it a better return on your reservoir investment. To learn more, contact

TheGroundTruth@weatherfordlabs.com.

Denbury 

5320 Legacy Drive
Plano, TX 75024

Denbury Resources, Inc.

Denbury Resources, Inc. is a growing independent oil and gas company. The Company is the largest oil and natural gas operator in Mississippi and Montana, owns the largest reserves of CO₂ used for tertiary oil recovery east of the Mississippi River, and holds significant operating acreage in the Rockies, Permian Basin, Mid-Continent and Gulf Coast. The Company's goal is to increase the value of acquired properties through a combination of exploitation, drilling and proven engineering extraction practices, with its most significant emphasis relating to tertiary recovery operations.

NYSE: DNR
www.denbury.com

Denbury Resources Inc.

BRANCHING OUT



MGS PAST PRESIDENTS

1939-1940	Henry N. Toler	1973-1974	Larry Walter
1940-1941	Urban B. Hughes	1974-1975	W. E. "Gene" Taylor
1941-1942	J. Tom McGlothlin	1975-1976	Jerry E. Zoble
1942-1943	Dave C. Harrell	1976-1977	P. David Cate
1943-1944	K. K. "Bob" Spooner	1977-1978	Sarah Childress
1944-1945	L. R. McFarland	1978-1979	Les Aultman
1945-1946	J. B. Story	1979-1980	Philip R. Reeves
1946-1947	Frederic F. Mellen	1980-1981	Marshall Kern
1947-1948	H. Lee Spyles	1981-1982	Stephen Oivanki
	Robert D. Sprague	1982- 1983	James W. "Buddy" Twiner
1948-1949	Robert D. Sprague	1983- 1984	Charles H. Williams
1949-1950	E. T. "Mike" Monsour	1984- 1985	C. Kip Ferns
1950-1951	J. Tate Clark	1985-1986	Steven S. Walkinshaw
	Charles E. Buck	1986-1987	J. R. "Bob" White
1951-1952	George W. Field	1987-1988	Harry Spooner
1952-1953	James L. Md11in, Jr.	1988-1989	Stanley King
1953-1954	Wilbur H. Knight	1989-1990	Stan Galicki
1954-1955	A. Ed Blanton	1990-1991	E. James Files, Jr.
1955-1956	Gilbert A. Talley	1991-1992	Stephen L. Ingram, Sr.
1956-1957	Ben Ploch	1992-1993	Michael Noone/Stanley King
1957-1958	Emil Monsour	1993-1994	Brian Sims
1958-1959	Charles Brown	1994-1995	C. W. "Neil" Barnes
1959-1960	M. F. Kirby	1995-1996	Lester Aultman
1960-1961	Rudy Ewing	1996-1997	Jack S. Moody
1961-1962	Xavier M. Franscogna	1997-1998	George B. Vockroth
1962-1963	Robert B. Ross	1998-1999	Rick L. Ericksen
1963-1964	William A. Skees	1999-2000	Stanley King
	Marvin Oxley	2000-2001	John C. Marble
1964-1965	James F. Bollman	2001-2002	Andrew T. Sylte
1965-1966	Sankey L. Blanton	2002-2003	Aaron Lasker
1966-1967	Alan Jackson	2003-2004	John G. Cox
1967-1968	Julius M. Ridgway	2004-2005	James E. Starnes
1968-1969	Edward D. Minihan	2005-2006	Todd Hines
1969-1970	Kevin E. Cahill	2006-2007	Bob Schneeflock
1970-1971	John Lancaster	2007-2008	Tony Stuart
1971-1972	Larry Boland	2008-2009	Lisa Ivshin
		2009-2010	Joe Johnson
		2010-2011	Brian Sims
		2011-2012	Stanley King