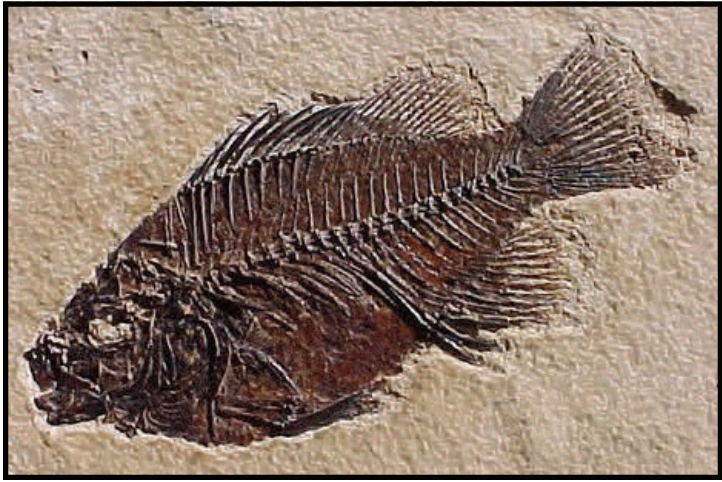
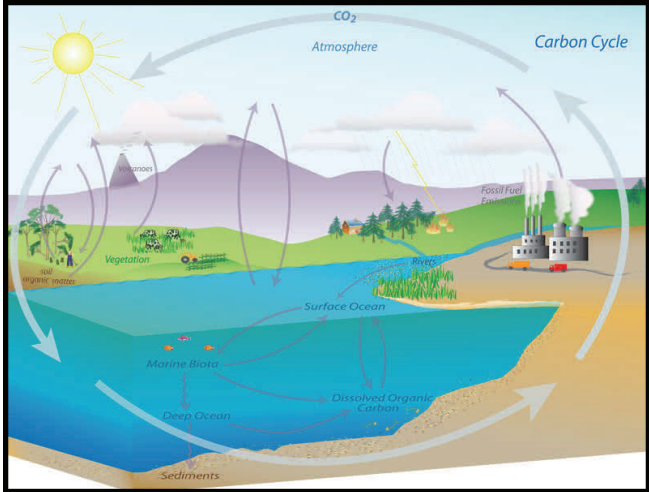
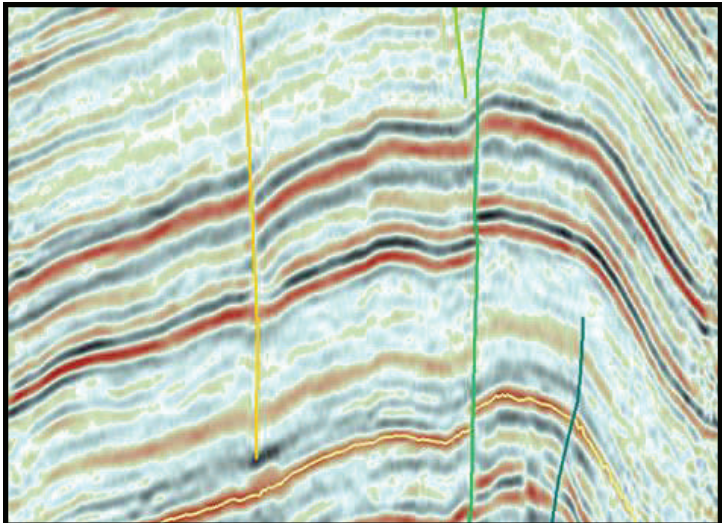
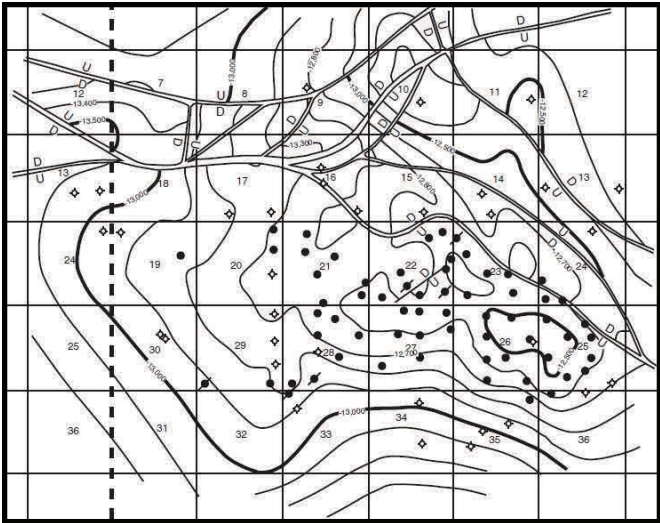




# MISSISSIPPI GEOLOGICAL SOCIETY

## eBULLETIN





# MGS 2012-2013 BOARD OF DIRECTORS

## *Officers*

<b>President</b>	Jim Files	Independent	<a href="mailto:jfgd@comcast.net">jfgd@comcast.net</a>	(601) 853-0701
<b>1st Vice President</b>	Neil Barnes	Tellus Operating	<a href="mailto:nbarnes@tellusoperating.com">nbarnes@tellusoperating.com</a>	(601) 898-7444
<b>2nd Vice President</b>	Joe Johnson	Tellus Operating	<a href="mailto:jjohnson@tellusoperating.com">jjohnson@tellusoperating.com</a>	(601) 898-7444
<b>Secretary</b>	Todd Hines	Moon-Hines	<a href="mailto:thines1360@aol.com">thines1360@aol.com</a>	(601) 572-8300
<b>Treasurer</b>	Bill Bagnall	BLM	<a href="mailto:wbagnall@blm.gov">wbagnall@blm.gov</a>	(601)-977-5417
<b>Webmaster</b>	Steve Walkinshaw	Vision Exploration	<a href="mailto:steve@visionexploration.com">steve@visionexploration.com</a>	(601) 607-3227
<b>Advertising</b>	Matt Caton	Tellus Operating	<a href="mailto:mcaton@tellusoperating.com">mcaton@tellusoperating.com</a>	(601) 898-7444
<b>Editor</b>	Matt Caton	Tellus Operating	<a href="mailto:mgs@treetop.us.com">mgs@treetop.us.com</a>	(601) 898-7444

## *Boland Scholarship*

<b>President</b>	Neil Barnes	Tellus Operating	(601) 898-7444
<b>Secretary</b>	Dave Cate	Pruet Oil	(601) 948-5279
<b>Members</b>	Ray Lewand		
	Tony Stuart	Venture Oil & Gas	(601) 428-7725
	James Starnes	DEQ	
	Bob Schneeflock	Geodigital Consulting	(601) 853-0701

## *Honorary Membership*

<b>Chairman</b>	Charles H. Williams, Jr. Vaughey & Vaughey		(601) 982-1212
<b>Members</b>	Dudley J. Hughes	Hughes South Corp.	(601) 420-9892
	E. Ralph Hines	Moon-Hines	(601) 572-8300
	Jerry Zoble	Independent	

## *MGS Representatives*

<b>AAPG</b>	Maurice Birdwell	Independent	(601) 936-6939
<b>GCAGS</b>	Danny Harrelson	U.S. Army R&D	(601) 634-2685

## *Other*

<b>Environmental</b>	Ken Ruckstuhl	Environmental Mgt.	(601) 992-8233
<b>Historian</b>	Stanley King	Independent	(601) 842-3539



# PRESIDENT'S LETTER

*Jim Files*

MGS Members,

Ok. Vaughn Watkins has started the ball rolling with a generous donation to a fund to say "thank you" to J. Ishee. J. Ishee has tirelessly kept us informed on oil and gas activity in the southeastern US for many years and has now retired with health issues. If you are interested in joining Vaughn in contributing, please send your checks to:

J. Ishee Fund  
MGS PO BOX 422  
Jackson, MS 39205-0422.

I hope to see you next week at our meeting. If you are traveling to Houston for NAPE, have a safe journey.

Here are some NAPE tips:

- 1) wear comfortable shoes (tennis shoes if possible).
- 2) wash your hands often as you will shake an incredible number of hands.
- 3) don't miss the first day.
- 4) remember to take your business cards.
- 5) use their catalog the night before to locate the prime booths you are there to see.

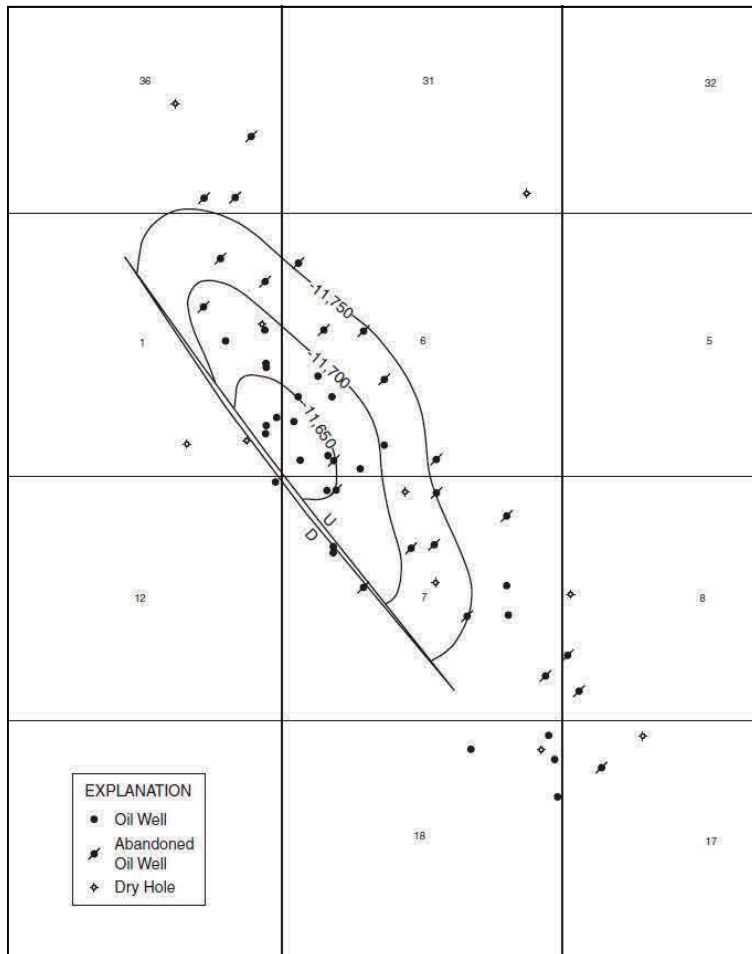
If you are going, have a great time. It is a great way to see new ideas, sell your ideas, meet new folks, and get reacquainted with old friends.

Sincerely,

Jim Files

# MGS MEETING SCHEDULE

When	What/Who	Where
September 13, 2012	Fall BBQ	Jackson Yacht Club-5:30pm
October 4, 2012	Steve Walkinshaw The Lower Brown Dense Lime Trend	River Hills – 11:30am
November 8, 2012	<b>Morgan Brown</b> Prestack Depth Migration for “Easy” Onshore Plays	River Hills – 11:30am
December 1, 2012	Christmas Party and Dance	Colonial Country Club
January 10, 2013	Dr. Lesli Wood Tuscaloosa Depositional Systems	River Hills – 11:30am
<b>February 14, 2013</b>	<b>Kirk Barrell</b> <b>Tuscaloosa Marine Shale</b>	<b>River Hills – 11:30am</b>
March 14, 2013	TBD	River Hills – 11:30am
April 11, 2013	Boland Scholarship Awards	River Hills – 11:30am
May 9, 2013	Spring Fling	Jackson Yacht Club– 5:30pm



## OFFICERS MEETINGS

August 4, 2012
September 6, 2012
September 27, 2012
November 1, 2012
December 6, 2012
January 3, 2013
February 7, 2013
March 7, 2013
April 4, 2013
May 2, 2013



# FEBRUARY SPEAKER

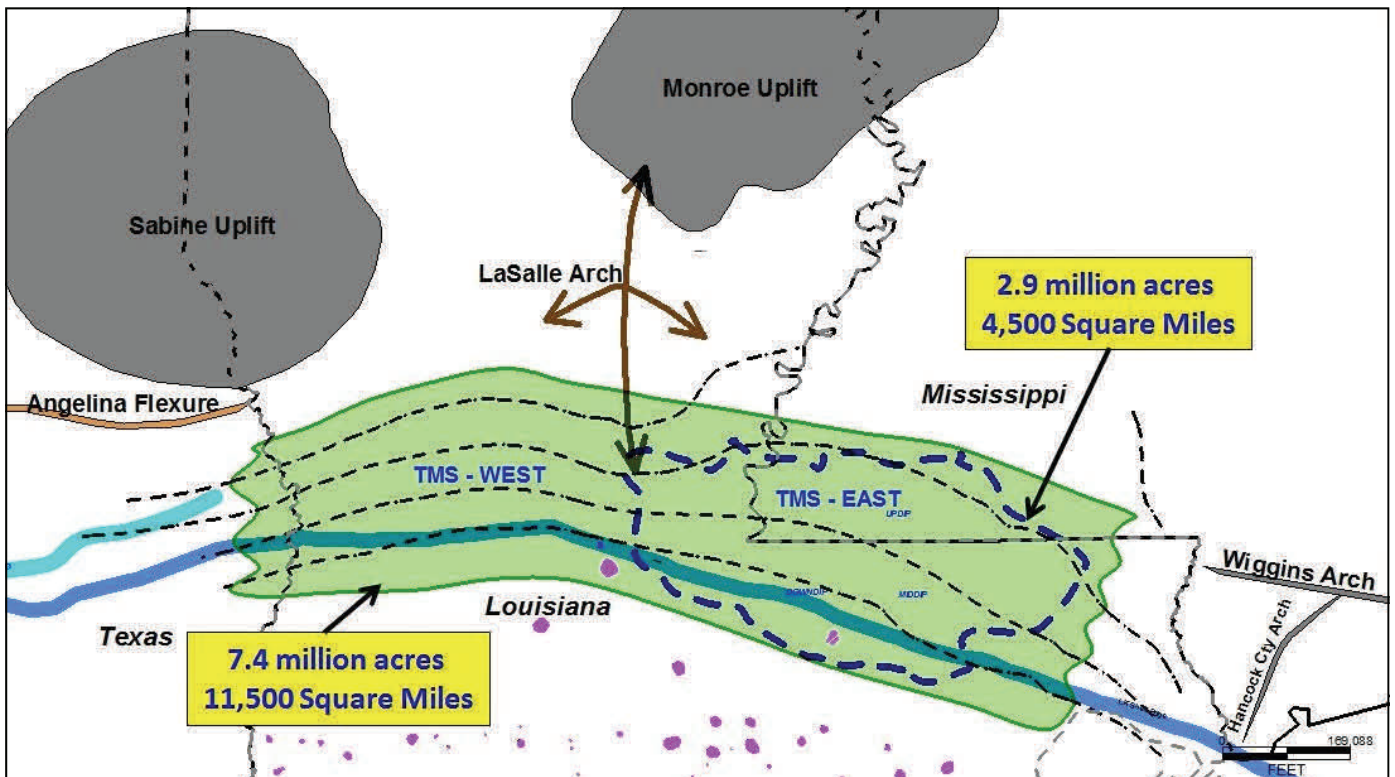
*Kirk Barrell*



**Kirk A. Barrell—President  
Amelia Resources LLC**

Mr. Barrell serves as Managing Partner of Amelia Resources LLC and Wave Exploration LLC. Mr. Barrell began his employment with Amoco Production Company and has worked for several small independents as a prospect generating geologist. He has 23 years of extensive experience in all phases of oil and gas exploration relating to geology and geophysics. Mr. Barrell's several years of energy experience, combined with his multi-disciplinary background, business know-how and extensive energy contacts, have allowed him to develop a proven track record in the building of successful energy-related companies.

## TUSCALOOSA MARINE SHALE Current Activity





# NEWS

## *MDEQ*



The Mississippi Department of Environmental Quality (MDEQ) would like everyone to know they have started putting old Survey Bulletins online. These Bulletins are available through:

<http://www.deq.state.ms.us>

Below is a list of sample links you can copy/paste into your browser.

[http://www.deq.state.ms.us/MDEQ.nsf/page/Geology\\_Bulletin131ATLASOFSHALLOWMISSISSIPPIALSALTDOMES?OpenDocument](http://www.deq.state.ms.us/MDEQ.nsf/page/Geology_Bulletin131ATLASOFSHALLOWMISSISSIPPIALSALTDOMES?OpenDocument)

[http://www.deq.state.ms.us/MDEQ.nsf/page/Geology\\_Bulletin129StreptoneuranGastropodsTheCoffee\\_SandCampanianNEMS?OpenDocument](http://www.deq.state.ms.us/MDEQ.nsf/page/Geology_Bulletin129StreptoneuranGastropodsTheCoffee_SandCampanianNEMS?OpenDocument)

[http://www.deq.state.ms.us/MDEQ.nsf/pdf/Geology\\_Bulletin125/\\$File/Bulletin%20125.pdf?OpenElement](http://www.deq.state.ms.us/MDEQ.nsf/pdf/Geology_Bulletin125/$File/Bulletin%20125.pdf?OpenElement)

[http://www.deq.state.ms.us/MDEQ.nsf/page/Geology\\_Bulletin123?OpenDocument](http://www.deq.state.ms.us/MDEQ.nsf/page/Geology_Bulletin123?OpenDocument)

[http://www.deq.state.ms.us/MDEQ.nsf/page/Geology\\_Bulletin100?OpenDocument](http://www.deq.state.ms.us/MDEQ.nsf/page/Geology_Bulletin100?OpenDocument)

[http://www.deq.state.ms.us/MDEQ.nsf/page/Geology\\_Bulletin23PaleozoicRocks?OpenDocument](http://www.deq.state.ms.us/MDEQ.nsf/page/Geology_Bulletin23PaleozoicRocks?OpenDocument)

[http://www.deq.state.ms.us/MDEQ.nsf/page/Geology\\_Circular-RocksAndFossilsFoundInMississippiGravelDeposits?OpenDocument](http://www.deq.state.ms.us/MDEQ.nsf/page/Geology_Circular-RocksAndFossilsFoundInMississippiGravelDeposits?OpenDocument)

[http://www.deq.state.ms.us/MDEQ.nsf/page/Geology\\_Circular-WindowsIntoMississippi%E2%80%99sGeologicalPast?OpenDocument](http://www.deq.state.ms.us/MDEQ.nsf/page/Geology_Circular-WindowsIntoMississippi%E2%80%99sGeologicalPast?OpenDocument)



# BOLAND SCHOLARSHIP WATCH

Faculty & Students,

April is almost here and the Mississippi Geological Society along with the Boland Scholarship Fund would like to remind you that we want to honor the most outstanding overall students for the 2012-2013 year.

Each April, the Boland Scholarship awards 1 student from each institution a check that rewards students for their hard work and dedication to the Geosciences and their community.

We look forward to a great year and hope to see you at our monthly meetings.

Best Regards,

Matt Caton  
Editor



THE UNIVERSITY OF  
SOUTHERN  
MISSISSIPPI

MILLSAPS  
COLLEGE



# **BOLAND SCHOLARSHIP DONATIONS**

**MGS would like to thank the following individuals for their generous donations to the Boland Scholarship Fund.**

**Maurice Birdwell**

**Ken McCarley**

**George Smith**

**Maurice Meylan**

**Terry Bryant**

**Jim Michael**

**Chris Franks**

**Meade Hufford**

**Dave Cate**

**Jak Douglas**

**Paul Gribas**

**If you would like to make a donation please see Bill Bagnall at the monthly meetings, or you can send your contribution to the following address:**

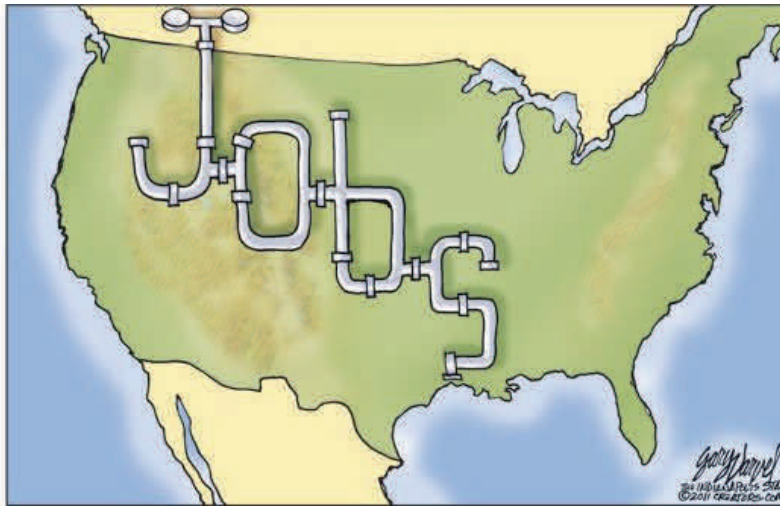
**Mississippi Geological Society  
PO BOX 422  
Jackson, MS 39205-0422**





# ARTICLE OF THE MONTH

## *Two Nominees, Two Opportunities for Growth*



In the coming months, President Obama will have to make two huge decisions about the future of American energy policy: whether to permit the Keystone XL pipeline and whether to allow Shell to move forward with its Arctic offshore drilling program. Coincidentally, both decisions may be influenced by the President's new appointments at the State Department and the Interior Department.

With Nebraska Governor Heineman's approval this week of the new route through Nebraska, the stage is set to bring more than 4 years of wrangling, delay, and political posturing on the Keystone XL pipeline to a close. Once the State Department conducts an environmental review that is already underway, there will be nothing preventing President Obama from making a final decision on the project - finally.

The President's decision to reject Keystone XL's application for a permit last January, despite the fact that the Department of State has affirmed that Keystone XL would be the safest pipeline ever constructed, was a political move meant to allay environmentalists until after the election. After suffering significant blowback from labor groups and the majority of Americans who support the project, the President enthusiastically supported construction of the southern leg of the pipeline and invited TransCanada to reapply for the permit that they need to cross the border from Alberta into Montana.

The delays and route changes that TransCanada has been forced to endure have added more than a billion dollars to the cost of the project, suspended tens of thousands of high paying jobs, delayed relief at the pump for millions of American drivers and prevented the project from pumping more than \$20 billion into the U.S. economy.

As the State Department makes its final Environmental Impact Statement and National Interest Determination, supporters of the pipeline should make clear to both the White House and to the President's nominee for Secretary of State, Massachusetts Senator John Kerry, the importance of the project to the U.S. economy. Members of the Senate should ensure that Mr. Kerry pledges not to inject politics into the Department's review of the project in his confirmation hearings.



## ARTICLE Continued.....



At the other end of the country, another energy company is wading through arbitrary delays and red tape in its efforts to develop resources off the Alaskan coast. In 2005 and 2008, the federal government sold Shell leases in the Beaufort and Chukchi Seas with a good faith agreement that the company would be able to explore the leases for oil and natural gas. In 2007, a federal court prevented Shell from drilling wells in the area due to a lawsuit by environmental groups. It happened again in 2009 and 2011 when baseless lawsuits aimed at the federal approvals process stopped the project from moving forward. Despite years of insisting that Alaskan offshore energy is part of the President's "all of the above" energy strategy, Secretary Salazar and the Department of the Interior has failed to permit the project in a timely manner.

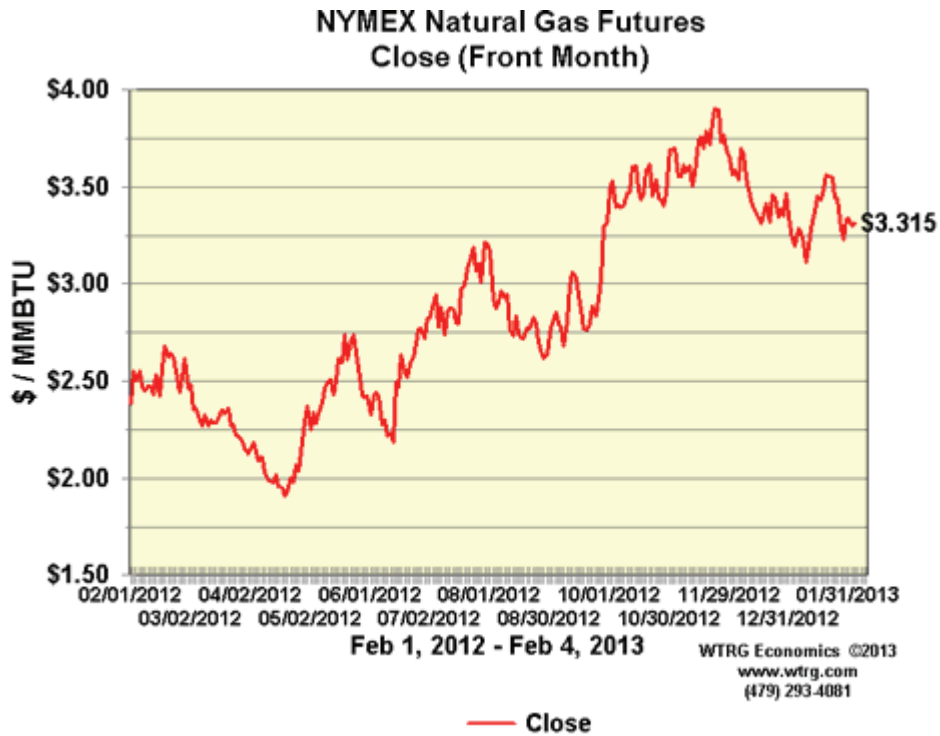
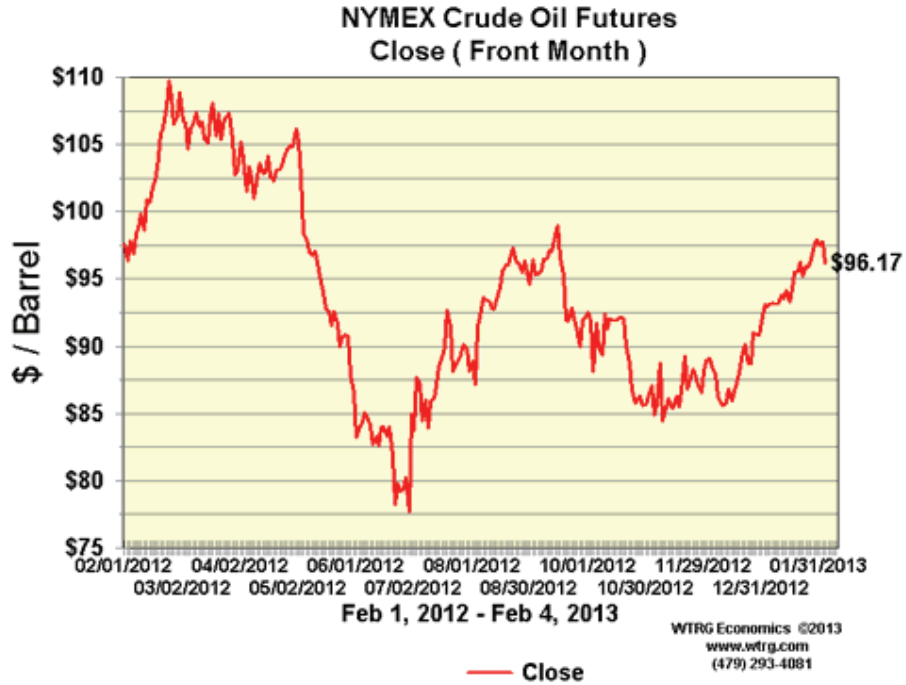
Now, Mr. Salazar is departing Washington for the family ranch in Colorado, leaving the future prospects of the Alaska project in limbo. President Obama and his new nominee for Secretary of the Interior must understand the consequences of imposing further delays on the Alaskan offshore project. Beyond simply setting a standard of bad business on the part of the federal government, delay by the Interior Department would also jeopardize efforts by other energy companies invested in the region and would diminish the United States' ability to lead in Arctic energy development.

The potential energy and economic benefits of the Keystone XL project and Shell's Arctic development are staggeringly large. The pipeline project would create 20,000 jobs and pour \$20 billion into the U.S. economy. Offshore Alaskan energy development will create more than 54,000 jobs annually for 50 years and generate \$300 billion in revenue for the U.S. Treasury. We cannot afford further delay.

President Obama and Sen. Kerry should move quickly to give final approval to the Keystone XL pipeline. Meanwhile, Congress should ensure that his nominee to lead the Interior Department understands the importance and benefits of energy development off Alaskan shores. It would be a boon for the U.S. economy, and the U.S. energy consumer.



# CURRENT PRICES



## Future Meetings of Selected Earth Science Organizations

EVENT	2011	2012	2013	2014	2015
AAPG Annual Convention & Exhibition (ACE)	10–13 April Houston, TX	22–25 April Long Beach, CA	19–22 May Pittsburgh, PA	6–9 April Houston, TX	31 May–3 June Denver, CO
AAPG International Conference & Exhibition (ICE)	23–26 October Milan, Italy	September Singapore	8–11 September Cartagena, Colombia		
AAPG Prospect & Property Expo-London (APPEX)	1–3 March London, UK	6–8 March London, UK			
AAPG Annual Leadership Conference	12–14 August Boulder, CO				
AAPG Foundation Trustee Associates	7–11 September Lake Tahoe, CA	28 Oct–1 Nov Scottsdale, AZ			
AAPG European Region Conference					
AAPG Eastern Section	25–27 September Washington, D.C.	22–26 September Cleveland, OH			
AAPG Gulf Coast Section (GCAGS)	16–19 October Veracruz, Mexico	21–23 October Austin, TX	Sept–Oct TBD New Orleans, LA	Sept–Oct TBD Lafayette, LA	Sept–Oct TBD Houston, TX
AAPG Mid-Continent Section	1–4 October Oklahoma City, OK				
AAPG Pacific Section	9–11 May Anchorage, AK	22–25 April Long Beach, CA			
AAPG Rocky Mountain Section (RMS)	26–29 June Cheyenne, WY	9–12 September Grand Junction, CO	TBD Salt Lake City, UT	TBD Denver, CO	
AAPG Southwest Section	5–7 June Ruidoso, NM	19–22 May Ft. Worth, TX			
AAPG Polar Petroleum Potential (3P)	30 Aug–2 Sept Halifax, Nova Scotia				
American Association of Petroleum Landmen (AAPL) Annual Meeting	8–11 June Boston, MA				
Arctic Technology Conference (OTC) <i>New!</i>	7–9 February Houston, TX	3–5 December Houston, TX			
Asia Pacific Oil & Gas Conference (SPE)	20–22 September Jakarta, Indonesia	22–24 October Perth, Australia			
Association of Environmental & Engineering Geologists (AEG)	19–24 September Anchorage, AK	TBD Salt Lake City, UT	TBD Seattle, WA		
Canadian Society of Petroleum Geologists (CSPG), Canadian Society of Exploration Geoscientists (CSEG), & Canadian Well Logging Society (CWLS)	9–13 May Calgary, AB, Canada				
European Assoc. of Geoscientists and Engineers (EAGE)	23–26 May Vienna, Austria	4–7 June Copenhagen, Denmark	9–14 June London, UK		
GEO India — South Asian Geosciences Conference & Exhibition	12–14 January New Delhi, India	Not Held			
GEO Middle East Geosciences Conference and Exhibition	Not Held	4–7 March Bahrain	Not Held		
Geological Assoc. of Canada/ Mineralogical Assoc. of Canada Annual Meeting	25–27 May Ottawa, ON, Canada	27–29 May St. John's, NL, Canada	22–24 May Winnipeg, MB, Canada		
Geological Society of America (GSA)	9–12 October Minneapolis, MN	4–7 November Charlotte, NC	27–30 October Denver, CO		
IPTC – International Petroleum Technology Conference (AAPG/EAGE/SEG/SPE)	15–17 November Bangkok, Thailand	5–7 December Beijing, China	2–4 December Doha, Qatar	TBD Kuala Lumpur, Malaysia	
National Association of Black Geologists & Geophysicist (NABGG)	7–10 September San Francisco, CA				
NAPE – North American Prospect Expo (AAPL) – Winter	16–18 February Houston, TX	22–24 February Houston, TX			
NAPE – North American Prospect Expo (AAPL) – Summer	17–19 August Houston, TX				
OTC – Offshore Technology Conference (SPE)	2–5 May Houston, TX	30 April–3 May Houston, TX	6–9 May Houston, TX	5–8 May Houston, TX	
PETEX (PESGB)	Not Held				
Society of Exploration Geophysicists (SEG)	18–23 September San Antonio, TX	4–9 November Las Vegas, NV	22–27 September Houston, TX	26–31 October Denver, CO	
Society of Independent Earth Scientists (SIPES)	20–23 June Jackson Hole, WY				
Society of Petroleum Engineers (SPE)	30 Oct–2 Nov Denver, CO	8–10 October San Antonio, TX	30 Sept–2 Oct New Orleans, LA		
Society of Professional Well Log Analysts (SPWLA)	14–18 May Colorado Springs, CO				

Shaded boxes indicate that all aspects of meeting are managed by the American Association of Petroleum Geologists  
Global Development and Conventions Department  
P.O. Box 979, Tulsa, Oklahoma 74101-0979 USA +1 918 560 2679  
Updated 14 July 2011 / Dates are subject to change

# GEO LINK POST

**USGS TAPESTRY OF TIME AND TERRAIN** <http://tapestry.usgs.gov> The CCGS is donating to all of the 5th and 6th grade schools in the Coastal Bend. Check it out—it is a spectacular map. You might want a framed one for your own office. The one in my office has glass and a metal frame, and it cost \$400 and it does not look as good as the ones we are giving to the schools. Call Owen 510-6224 if you want one for your office for \$150. Duncan, Mike, Chris, Dave, Bob Randy, Seb., Kevin, Ken, Craig, Patrick, Robert.

**FREE TEXAS TOPO'S** <http://www.tnris.state.tx.us/digital.htm> these are TIFF files from your state government that can be downloaded and printed. You can add them to SMT by converting them first in Globalmapper. Other digital data as well.

**FREE NATIONAL TOPO'S** [http://store.usgs.gov/b2c\\_usgs/b2c/start/\(xcm=r3standardpitrex\\_prd\)/.do](http://store.usgs.gov/b2c_usgs/b2c/start/(xcm=r3standardpitrex_prd)/.do) go to this webpage and look on the extreme right side to the box titled TOPO MAPS DOWNLOAD TOPO MAPS FREE.

<http://www.geographynetwork.com/> Go here and try their top 5 map services. My favorite is 'USGS Elevation Date.' Zoom in on your favorite places and see great shaded relief images. One of my favorites is the Great Sand Dunes National Park in south central Colorado. Nice Dunes.

<http://antwrp.gsfc.nasa.gov/apod/astropix.html> Astronomy picture of the day — awesome. I click this page everyday.

<http://www.spacimaging.com/gallery/ioweek/iow.htm> Amazing satellite images. Check out the gallery.

<http://www.ngdc.noaa.gov/seg/topo/globegal.shtml> More great maps to share with kids and students.

[www.geo.org](http://www.geo.org) Don't forget we have our own web page.

<http://micro.magneet.fsu.edu/primer/java/scienceoptiscu/owersof10/>

<http://asterweb.jpl.nasa.gov/gallery/default.htm> Great satellite images of volcanoes

<http://terra.nasa.gov/gallery/> More here

[www.ermapper.com](http://www.ermapper.com) They have a great free downloadable viewer for TIFF and other graphic files called ER Viewer.

[www.drillinginfo.com](http://www.drillinginfo.com) This is an incredible (subscription) well and completion data service for independents. Can be demo'ed for free.

<http://terrasrver.com/> Go here to download free aerial photo images that can be plotted under your digital land and well data. Images down to 1 meter resolution, searchable by Lat Long coordinate. Useful for resolving well location questions.

<http://www.fs.fed.us/gpnf/volcanocams/msh/> This is a live cam of Mt. St. Helens refreshed every 5 minutes. At the bottom are old videos of past eruptions in this cycle. It is worth a watch especially now.



# GEOLOGY POST

## ARTICLES, PAPERS or NEWS?

**ATTENTION!!!!!!** Industry, Professors and Students:

We would like to add a dedicated section that includes more content from the industry and our schools.

Submissions can include anything from professional papers, thesis abstracts, job opportunities to pictures. Anything!!!!

If you have any information or news you would like to share with the Society **PLEASE** email them to the MGS Editor at:

[mcaton@tellusoperating.com](mailto:mcaton@tellusoperating.com)

Thanks & Regards,

Matt Caton  
Editor



# MGS HONORARY MEMBERS

**Esther Applin\***

**Verne Culbertson \***

**David C. Harrell\***

**Dudley J. Hughes**

**Walter P. Jones\***

**Winnie McGlammery\***

**Maurice E. Miesse\***

**Marvin E. Norman\***

**Thurston Connell Rader\***

**Henry Toler\***

**Charles H. Williams**

**David Cate**

**Paul Applin\***

**H. Leroy Francis\***

**Oleta R. Harrell\***

**Urban B. Hughes\***

**Harold Karges\***

**Thomas McGlothin\***

**Emil Monsour\***

**Marvin L. Oxley\***

**Baxter Smith\***

**H. Vaughn Watkins**

**Jerry Zoble**

**Lawrence F. Boland\***

**Jim Furrh\***

**Ralph Hines**

**Wendell B. Johnson \***

**Wilbur H. Knight\***

**Frederic F. Mellen\***

**William H. Moore\***

**Richard R. Priddy\***

**Harry V. Spooner**

**Stewart W. Welch\***

**Julius Ridgeway**

**\* deceased**

**MEMBERSHIP APPLICATION / RENEWAL FORM**

**MISSISSIPPI GEOLOGICAL SOCIETY**

**P.O. BOX 422, JACKSON, MISSISSIPPI 39205-0422**

**2012-2013**

Membership year is June through May

New Membership (\$20/yr)\_\_\_\_\_ Renewal (\$20/yr)\_\_\_\_\_ Student (FREE)\_\_\_\_\_ Associate (\$20/yr)\_\_\_\_\_

Boland Scholarship Fund Donation \$ \_\_\_\_\_ Total Amount Enclosed \$ \_\_\_\_\_

Last Name: \_\_\_\_\_ First: \_\_\_\_\_ MI: \_\_\_\_\_

Mailing Address: \_\_\_\_\_

Office Phone: \_\_\_\_\_ Home Phone: \_\_\_\_\_ FAX: \_\_\_\_\_

E-mail Address: \_\_\_\_\_

College/University Attended: \_\_\_\_\_

Degree(s) Obtained and Year(s) Awarded: \_\_\_\_\_

Professional Associations, Certifications, & Licenses: \_\_\_\_\_





# 2012-2013 MGS MEMBERS

John Ables	Ken Adams	Chris Bowen	Ken McCarley
O Bill Bagnall	Larry Baria	Roger Chapman	James Landrem
O Neil Barnes	Randy Bissell	Tom Giosa	Thang Pham
Maurice Birdwell	Terry Bryant	Mitchell McMillan	William Potthoff
Robert Branson	Alvin Byrd	Tom McMillan Jr.	Gary Slade
O Matt Caton	Dave Cate	Armando Ricci	Michael Spooner
Sara Davis	Phil Cook	Larry Baria	Ed Stricker
Dave Easom	Chris Franks	Michael Bograd	Don Smith
O Jim Files	Bob Gaston	Lynn Boone	Andrew Sylte
O Todd Hines	David Handcock	Alvin Byrd	Erik Tangumonkem
O Joe Johnson	Bernard Holman	J C Carlisle	Mike Taylor
James Landrem	Joe McDuff	Charles Doubek	Janet Verret
Ken McCarley	Phillip Meadows	Jak Douglas	Steve Walker
Shawn Pool	Bob McElroy	Dave Easom	Fred Walsh
Philip Reeves	Maurice Meylan	Rick Ericksen	Rob Weyman
Bob Schneeflock	James Michael	Mary Giesler	Bradley Winton
Howard Samsel	Jack Moody	Frank Heitmuller	Karl Kaufman
Don Smith	Charlie Morrison	I. Meade Hufford	Michelle Chezem
George Smith	Jim Nix	Kevin Jefferys	Charles Coney
Jim Stephens	James Norris	Arthur Johnson	Jamie Crawford
John Sullivan	Billy Powell	Jim Johnson	Paul Gribas
Tom Sylte	Thomas Seitz	Lars Johnson	Charles Smith
Mike Taylor	George Self	Barbara Kearney	Lindsey Stewart
Sid Thompson	Jimmy Sparks	Cody Lenert	
Steve Walkinshaw	Tony Stuart	Michael Lieser	
Johnny Holifield	Stan Thieling	Ken Magee	
Joe White			

\*This list is updated on a monthly basis.

(O) - Officer

(H) - Honorary

## MGS ADVERTISING ORDER FORM

September 2012 – May 2013

### I. Bulletin Advertisements:

<u>Size</u>	<u>Rate/Year</u>	<u>Amt. Remitted</u>
Full Page Ad (6" x 8")	\$500	\$ _____
1/2 Page Ad (6" x 4")	\$300	\$ _____
1/4 Page Ad (3" x 4")	\$200	\$ _____
Business Card Ad (1 1/2" x 3")	\$100	\$ _____
Professional Listing (1/2" x 3")	\$ 50	\$ _____

### II. Web Page Advertisements (www.missgeo.com):

<u>Type of Web Page Ad</u>	<u>Rate/Year</u>	<u>Amt. Remitted</u>
Front Page Sponsor (Banner Ad – limit of 5)	\$500	\$ _____
Second Page Banner Ad	\$250	\$ _____
Professional Listing/Link	\$100	\$ _____

(Note: Please contact Steve Walkinshaw at (601) 607-3227 or mail@visionexploration.com for details concerning placing your ad on the MGS web site.)

**Total Remitted** \$ \_\_\_\_\_

Please make checks payable to the Mississippi Geological Society. If you have any questions, contact Matt Caton at (601) 898-7444 or mcaton@tellusoperating.com

**SEI**®

**SEISMIC EXCHANGE, INC.**

201 St. Charles Ave., Suite 4300  
New Orleans, LA 70170-4300  
(504) 581-7153 • Fax (504) 581-9591

**HOWARD PATTON**

**PRUET OIL COMPANY, LLC**  
**OIL & GAS EXPLORATION**

**217 WEST CAPITOL STREET**  
**JACKSON, MS 39201**

**OFFICE: (601) 948-5279    Fax: (601) 944-1281**

**W. LESTER AULTMAN**

125 South Congress St., Suite 1212, Jackson, MS 39201  
Office (601) 353-2738    Res. (601) 924-4830

**VANTAGE OIL COMPANY**

1710 Tank Road    (601) 878-0593  
Terry, MS 39170



**BEAN RESOURCES, INC.**

**THOMAS A. GIOSA**  
Geologist

P. O. Box 52768 (70505)  
1000 E. St. Mary Blvd.  
Lafayette, La. 70503

Off. (337) 234-2326  
Fax (337) 234-2330  
Cell (337) 288-4089

**BRUNINI**

**WATTS C. UELTSCHY**

OFFICE (601) 960-6871 | FAX (601) 960-6902

E-MAIL WATTS@BRUNINI.COM | WWW.BRUNINI.COM

BRUNINI, GRANTHAM, GROWER & HEWES, PLLC  
ATTORNEYS AT LAW

100 EAST CAPITOL STREET SUITE 100 JACKSON, MS 39201  
MAILING ADDRESS: P.O. DRAWER 119 JACKSON, MS 39205



**Day Dreams Resources, LLC**

**Jerry P. Ogden**

**OIL AND GAS EXPLORATION AND PRODUCTION**  
**CONSULTING PETROLEUM ENGINEER**

Jerry P. Ogden, Pet. Eng.  
P. O. Box 101  
Natchez, MS 39121  
email: ogdenjerry@bellsouth.net

Office (601) 446-8105  
Fax (601) 446-8844  
Cell (601) 807-1000



**Marlin**

**EXPLORATION, L.L.C.**

401 Edwards Street, Suite 1200  
Shreveport, LA 71101

P.O. Box 1367  
Shreveport, LA 71164

office: (318) 222-8406  
fax: (318) 222-6061

email: mei@marlinexploration.com

**Jon Q=Petersen**  
President

**S. Cody Lenert**  
Geologist

**Autie T. Orjias**  
V.P./Land Manager

**Ryan Q=Petersen**  
Land

**Dean Giles**  
Secretary/Treasurer

**Rhonda White**  
Admin. Assistant

**Joe R. White, Jr.**  
Chief Geologist



**Jason Stockstill**  
Marketing Representative

**DAWSON GEOPHYSICAL COMPANY**

508 West Wall, Suite 800  
Midland, Texas 79701-5010  
Telephone 432/684-3000

Fax 432/684-3030

Cell 432/967-4099

e-mail: stockstill@dawson3d.com



# ENERGY DRILLING COMPANY<sup>®</sup>

CONTRACT DRILLING 3000 – 15,000 FEET  
MS-AL-FL-ARK-LA-TEX

Pat Burns, Jr.

Jody Helbling

Nestor Navarro

601-446-5259

(Fax)601-446-8607

P. O. Box 905

413 Liberty Rd.

Natchez, MS 39121



OPERATING GROUP, LLC

## **OPERATING GROUP, LLC**

**602 Crescent Place, Suite 100**

**Ridgeland, MS 39157**

**601-898-7444 Voice**

**601-898-7446 Fax**

**BRIAN SIMS**

**EXPLOITATION GEOLOGIC MANAGER**

Email: [bsims@tellusoperating.com](mailto:bsims@tellusoperating.com)

# OWLCO

Oil Well Logging Company  
P. O. Box 1692  
Madison, MS 39130  
(601) 477-8315



**MOCO INC.**  
The Mississippi Oil Company

MICHAEL L. BLACKWELL  
H. DON NOBLITT

603 Northpark Drive • Ridgeland, MS 39157  
(601) 957-3550



**Karl J. Kaufmann**  
*President*

Suite B  
546 Keyway Drive  
Jackson, MS 39232

601-936-3601  
Fax 601-936-3646  
coukauf@aol.com

**BLAIR & BONDURANT, P.A.**  
ATTORNEYS AT LAW

WILLIAM F. BLAIR

P.O. Box 321423      1368 Old Fannin Road  
Jackson, MS 39232      Suite 300  
Telephone: (601) 992-4477      Brandon, MS 39047  
Telecopier: (601) 992-9189      Email:



**TROPHY  
PETROLEUM  
CORPORATION**

100 N. Van Buren Street  
Post Office Box 415  
Carthage, MS 39051  
(601) 298-0200 (601) 298-0201 Fax

E. Wayne Upchurch  
President



**John G. Cox**  
Geologist

603 Northpark Drive, Suite 300      601.978.1763  
Ridgeland, Mississippi 39157      fax 601.952.0425  
john\_cox@bellsouth.net

# BRUXOIL, INC.

DAVID K. BROOKS - PRESIDENT  
RAYMOND A. HELFRICH - VICE PRESIDENT  
DOROTHY M. JAUBERT

P. O. Box 16929  
Jackson, MS 39236  
(601) 981-5722  
FAX: (601) 366-9490



**ROUNDTREE & ASSOCIATES, INC.**  
OIL AND GAS PRODUCTION  
210 Trace Colony Park Drive,  
Ridgeland, MS 39157  
Phone (601) 355-4530

**MOON & HINES**  
OIL & GAS EXPLORATION

**MOON-HINES-TIGRETT OPERATING CO., INC.**  
PROPERTY MANAGEMENT

P O BOX 3216  
RIDGELAND, MS 39158

OFFICE (601) 572-8300      FAX (601) 572-8310



**KELTON OPERATING COMPANY, INC.**  
since 1953

605 SUN TRUST TOWER  
220 W. GARDEN STREET  
PENSACOLA, FL 32501  
P.O. BOX 230  
PENSACOLA, FL 32591

TELEPHONE  
(850) 434-6830  
FACSIMILE  
(850) 434-6842

**Boone**  **Exploration, Inc.**

Lynn D. Boone  
*President*

J.C. Carlisle  
*Vice President*

21 Wire Road  
P.O. Box 8660  
Huntsville, TX 77340

Phone: 936-295-4066  
Fax: 936-295-4042  
Email: jcc9551@aol.com

**Energy Land Services**

Oil & Gas Leases

**I. Meade Hufford, CPL**

Owner

P. O. Box 302  
144 Wharton Grove Ln  
Weems, VA 22576

Phone: 804-438-5852  
Fax: 804-438-9043  
Cell: 713-705-7235  
hufford1913@aol.com

**JULIUS M. RIDGWAY**

COASTAL EXPLORATION, INC.

1437 OLD SQUARE ROAD, #104  
JACKSON, MISSISSIPPI 39211

601-362-0502  
FAX: 601-362-5397

**SPOONER PETROLEUM COMPANY**

210 East Capitol St., Suite 956  
Jackson, Mississippi 39201

**Oil & Gas Production & Exploration  
Contract Operations**

601-969-1831

**JAMES B. FURRH, Jr., Inc.**

*Oil & Gas Exploration*

4450 Old Canton Road, Suite 205,  
Jackson, MS 39211  
Phone (601) 982-9393 Fax (601) 982-9785

**E. GEOFFREY JEFFREYS**

*Petroleum Consultant*

**OIL, GAS AND MINERAL APPRAISALS**

115 Fairway Drive  
Daphne, AL 36526  
egjeffreys@aol.com

Off (251) 621-1850  
Fx (251) 621-1630  
Cell (251) 709-7919

**Bryant Miller**

1837 Peachtree Street  
Jackson, MS 39202

bryantgmiller@bryantgmiller.com

**ENERGEN**  
RESOURCES

**President & COO**

**John Richardson**

**Senior Vice President**

**Operations**

**Paul Sparks**

**General Manager**

**Acquisitions & Engineering**

**Gene Cash**

**General Manager**

**Geology**

**Ron Tisdale**

**General Manager**

**Land**

**Paul Rote**

**(205)326-2721**

**Joseph H. McDuff**  
Geologist

351 Chapel Loop  
Mandeville, LA 70471  
985.845.9430

jhmcduff@charter.net



**Diversified Land  
Management, Inc.**

**PERMIT ACQUISITION  
SPECIALISTS**

**Jack Tate**

President

Office: 337.886.0060

Fax: 337.886.0064

Cell: 601.259.1366

email: geoagent46@aol.com

dlimonline.com

"A company committed to excellence and achieving success while providing professional permitting acq. & project mngt. with the client's interests & concerns top priority"

# Get More



## Weatherford®

LABORATORIES

[weatherfordlabs.com](http://weatherfordlabs.com)

© 2012 Weatherford. All rights reserved. Incorporates proprietary and patented Weatherford technology.

With reservoirs becoming increasingly complex, you need the most accurate information you can get to better understand your reservoir.

Weatherford Labs helps you get more from your core by combining an unsurpassed global team of geoscientists, engineers, technicians and researchers with the industry's most comprehensive, integrated laboratory services worldwide. From core analysis, sorption, geochemistry and isotopic composition to detailed basin modeling and comprehensive data packages, we provide you with real reservoir rock and fluid information that hasn't been distilled by a simulator or iterated by software.

We call it "The Ground Truth™" – giving you the accurate answers you need for better reservoir understanding. You'll call it a better return on your reservoir investment. To learn more, contact

[TheGroundTruth@weatherfordlabs.com](mailto:TheGroundTruth@weatherfordlabs.com).

Denbury

5320 Legacy Drive  
Plano, TX 75024

## Denbury Resources, Inc.

*Denbury Resources, Inc. is a growing independent oil and gas company. The Company is the largest oil and natural gas operator in Mississippi and Montana, owns the largest reserves of CO<sub>2</sub> used for tertiary oil recovery east of the Mississippi River, and holds significant operating acreage in the Rockies, Permian Basin, Mid-Continent and Gulf Coast. The Company's goal is to increase the value of acquired properties through a combination of exploration, drilling and proven engineering extraction practices, with its most significant emphasis relating to tertiary recovery operations.*

NYSE: DNR  
[www.denbury.com](http://www.denbury.com)

Denbury Resources Inc.

# BRANCHING OUT



# MGS PAST PRESIDENTS

1939-1940	Henry N. Toler	1973-1974	Larry Walter
1940-1941	Urban B. Hughes	1974-1975	W. E. "Gene" Taylor
1941-1942	J. Tom McGlothlin	1975-1976	Jerry E. Zoble
1942-1943	Dave C. Harrell	1976-1977	P. David Cate
1943-1944	K. K. "Bob" Spooner	1977-1978	Sarah Childress
1944-1945	L. R. McFarland	1978-1979	Les Aultman
1945-1946	J. B. Story	1979-1980	Philip R. Reeves
1946-1947	Frederic F. Mellen	1980-1981	Marshall Kern
1947-1948	H. Lee Spyles	1981-1982	Stephen Oivanki
	Robert D. Sprague	1982- 1983	James W. "Buddy" Twiner
1948-1949	Robert D. Sprague	1983- 1984	Charles H. Williams
1949-1950	E. T. "Mike" Monsour	1984- 1985	C. Kip Ferns
1950-1951	J. Tate Clark	1985-1986	Steven S. Walkinshaw
	Charles E. Buck	1986-1987	J. R. "Bob" White
1951-1952	George W. Field	1987-1988	Harry Spooner
1952-1953	James L. Md11in, Jr.	1988-1989	Stanley King
1953-1954	Wilbur H. Knight	1989-1990	Stan Galicki
1954-1955	A. Ed Blanton	1990-1991	E. James Files, Jr.
1955-1956	Gilbert A. Talley	1991-1992	Stephen L. Ingram, Sr.
1956-1957	Ben Ploch	1992-1993	Michael Noone/Stanley King
1957-1958	Emil Monsour	1993-1994	Brian Sims
1958-1959	Charles Brown	1994-1995	C. W. "Neil" Barnes
1959-1960	M. F. Kirby	1995-1996	Lester Aultman
1960-1961	Rudy Ewing	1996-1997	Jack S. Moody
1961-1962	Xavier M. Franscogna	1997-1998	George B. Vockroth
1962-1963	Robert B. Ross	1998-1999	Rick L. Ericksen
1963-1964	William A. Skees	1999-2000	Stanley King
	Marvin Oxley	2000-2001	John C. Marble
1964-1965	James F. Bollman	2001-2002	Andrew T. Sylte
1965-1966	Sankey L. Blanton	2002-2003	Aaron Lasker
1966-1967	Alan Jackson	2003-2004	John G. Cox
1967-1968	Julius M. Ridgway	2004-2005	James E. Starnes
1968-1969	Edward D. Minihan	2005-2006	Todd Hines
1969-1970	Kevin E. Cahill	2006-2007	Bob Schneeflock
1970-1971	John Lancaster	2007-2008	Tony Stuart
1971-1972	Larry Boland	2008-2009	Lisa Ivshin
		2009-2010	Joe Johnson
		2010-2011	Brian Sims
		2011-2012	Stanley King