



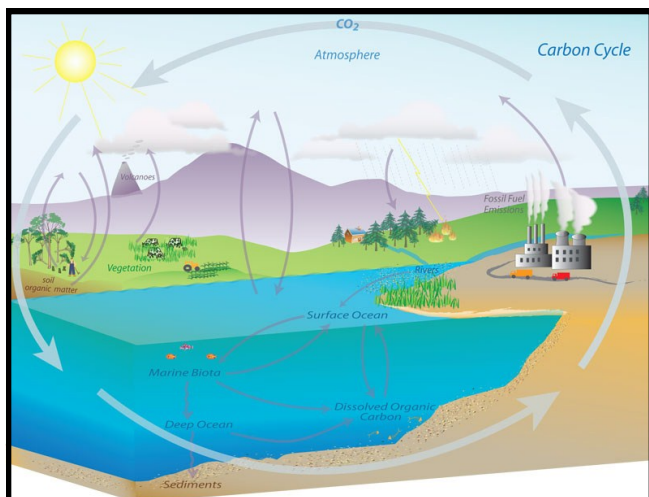
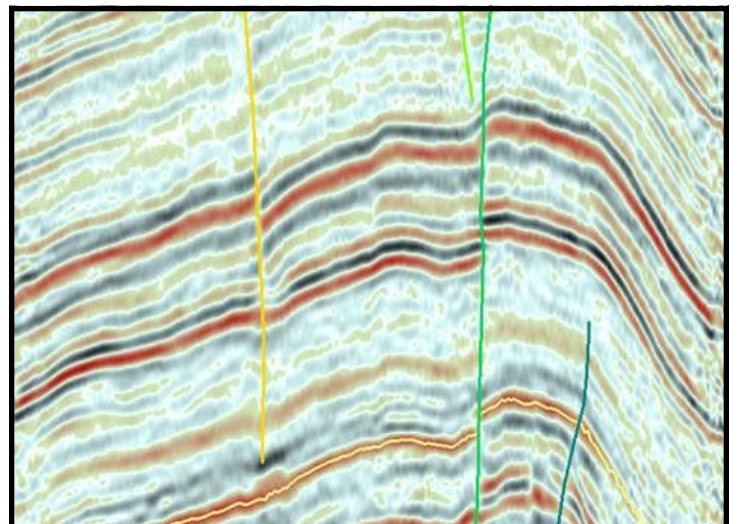
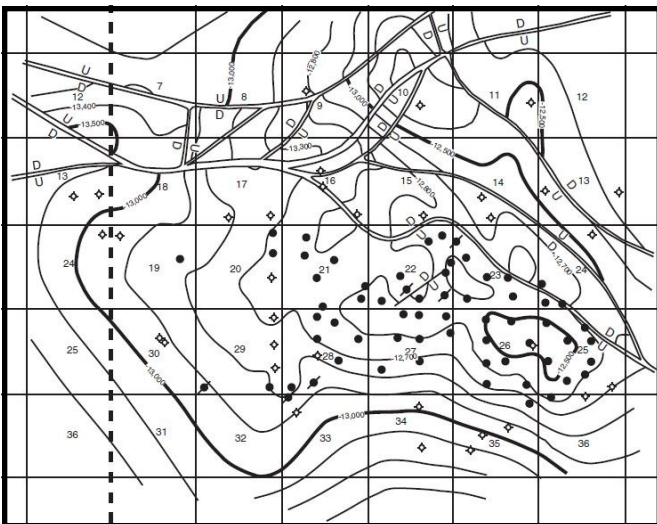
Volume 61

No. 5

January 2013

# MISSISSIPPI GEOLOGICAL SOCIETY

## eBULLETIN





# MGS 2012-2013 BOARD OF DIRECTORS

## *Officers*

<b>President</b>	Jim Files	Independent	<a href="mailto:jfgd@comcast.net">jfgd@comcast.net</a>	(601) 842-3539
<b>1st Vice President</b>	Neil Barnes	Tellus Operating	<a href="mailto:nbarnes@tellusoperating.com">nbarnes@tellusoperating.com</a>	(601) 898-7444
<b>2nd Vice President</b>	Joe Johnson	Tellus Operating	<a href="mailto:jjohnson@tellusoperating.com">jjohnson@tellusoperating.com</a>	(601) 898-7444
<b>Secretary</b>	Todd Hines	Moon-Hines	<a href="mailto:thines1360@aol.com">thines1360@aol.com</a>	(601) 572-8300
<b>Treasurer</b>	Bill Bagnall	BLM	<a href="mailto:wbagnall@blm.gov">wbagnall@blm.gov</a>	(601)-977-5417
<b>Webmaster</b>	Steve Walkinshaw	Vision Exploration	<a href="mailto:steve@visionexploration.com">steve@visionexploration.com</a>	(601) 607-3227
<b>Advertising</b>	Matt Caton	Tellus Operating	<a href="mailto:mcaton@tellusoperating.com">mcaton@tellusoperating.com</a>	(601) 898-7444
<b>Editor</b>	Matt Caton	Tellus Operating	<a href="mailto:mgs@treetop.us.com">mgs@treetop.us.com</a>	(601) 898-7444

## *Boland Scholarship*

<b>President</b>	Neil Barnes	Tellus Operating	(601) 898-7444
<b>Secretary</b>	Dave Cate	Pruet Oil	(601) 948-5279
<b>Members</b>	Ray Lewand		
	Tony Stuart	Venture Oil & Gas	(601) 428-7725
	James Starnes	DEQ	
	Bob Schneeflock	Geodigital Consulting	(601) 853-0701

## *Honorary Membership*

<b>Chairman</b>	Charles H. Williams, Jr. Vaughey & Vaughey		(601) 982-1212
<b>Members</b>	Dudley J. Hughes	Hughes South Corp.	(601) 420-9892
	E. Ralph Hines	Moon-Hines	(601) 572-8300
	Jerry Zoble	Independent	

## *MGS Representatives*

<b>AAPG</b>	Maurice Birdwell	Independent	(601) 936-6939
<b>GCAGS</b>	Danny Harrelson	U.S. Army R&D	(601) 634-2685

## *Other*

<b>Environmental</b>	Ken Ruckstuhl	Environmental Mgt.	(601) 992-8233
<b>Historian</b>	Stanley King	Independent	(601) 842-3539



# PRESIDENT'S LETTER

*Jim Files*

Hello fellow members!

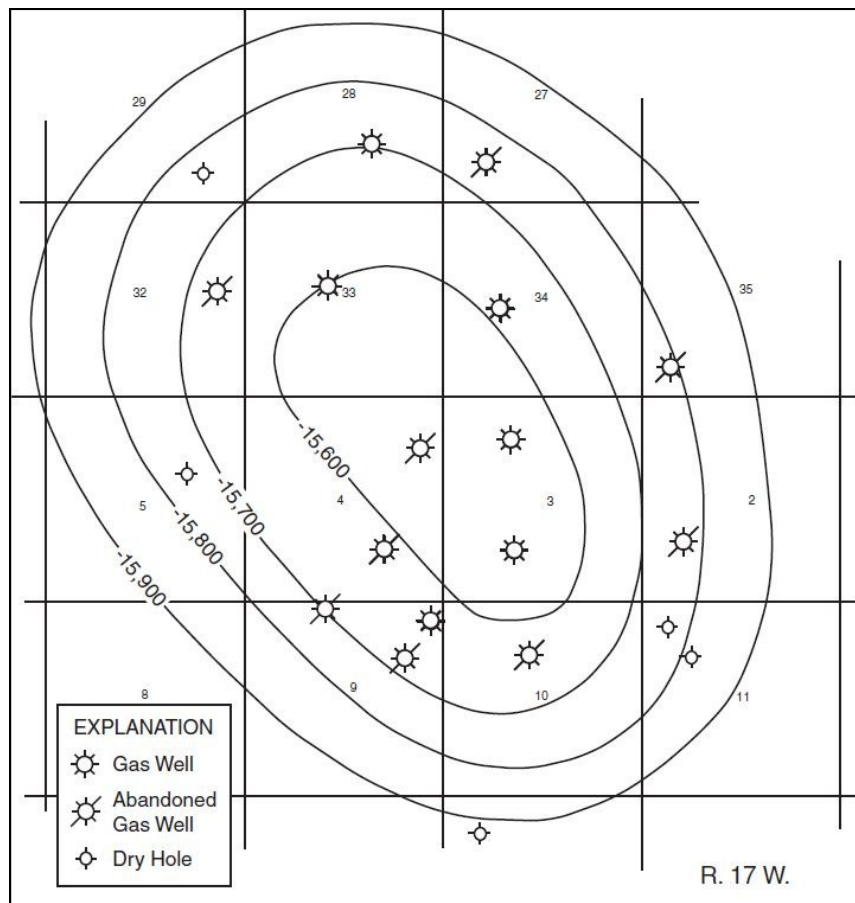
As we've moved into the new year, I think about this roller coaster business of ours. I started in 1975, and I remember my wife Patti meeting new folks in Lafayette, LA. As she told people her husband's career, they would respond "How wonderful!". Then in the mid 80's in Jackson, on hearing her husband's career the response was something like "Oh you poor dear". She would ask me, "What does this mean?" In May 1980, I attended a crawfish boil in Daphne, AL and remember two young "pup" landmen discussing how well they were doing income wise from their day rate. One said to the other "I'm making so much money now, that I plan on knocking off the second half of the year". Reminds me of the fable about the grasshopper. I also distinctly remember a geologist in 1980, who will go unnamed, complaining to me as we walked down Capitol Street, that his new company car had no cruise control. I was thinking, "What's wrong with this picture". Looking back, all I can say is, When this business gets really good, keep looking over your shoulder!

May you have a HAPPY and HEALTHY NEW YEAR



# MGS MEETING SCHEDULE

When	What/Who	Where
September 13, 2012	Fall BBQ	Jackson Yacht Club-5:30pm
October 4, 2012	Steve Walkinshaw The Lower Brown Dense Lime Trend	River Hills – 11:30am
November 8, 2012	<b>Morgan Brown</b> Prestack Depth Migration for “Easy” Onshore Plays	River Hills – 11:30am
December 1, 2012	Christmas Party and Dance	Colonial Country Club
<b>January 10, 2013</b>	<b>Dr. Lesli Wood</b> <b>Tuscaloosa Depositional Systems</b>	<b>River Hills – 11:30am</b>
February 14, 2013	Kirk Barrell Tuscaloosa Marine Shale	River Hills – 11:30am
March 14, 2013	TBD	River Hills – 11:30am
April 11, 2013	Boland Scholarship Awards	River Hills – 11:30am
May 9, 2013	Spring Fling	Jackson Yacht Club– 5:30pm



## OFFICERS MEETINGS

August 4, 2012
September 6, 2012
September 27, 2012
November 1, 2012
December 6, 2012
January 3, 2013
February 7, 2013
March 7, 2013
April 4, 2013
May 2, 2013



# JANUARY SPEAKER

*Dr. Lesli J. Wood*



Dr. Lesli J. Wood  
Senior Research Scientist  
Bureau of Economic Geology  
The University of Texas at Austin

---

## Late Cretaceous Paleo-Mississippi Valley Feeder Systems to the North-Central and Northeastern Gulf of Mexico: A Tuscaloosa-Time Sediment Machine

L. J. Wood and K. Woolf

Bureau of Economic Geology, University of Texas at Austin, Austin, Texas 78713

---

### ABSTRACT

Analysis of 640 wireline logs and 13 whole core across the region of eastern Louisiana, Mississippi, Alabama, and parts of Florida, onshore as well as offshore, indicate that a significant paleo-Mississippi River system drained the central and eastern Gulf Coastal Plain feeding coarse-grained fluvial braided and meandering river sediments to shelf-edge deltas, developing in a wave- and current-dominated environment in and around several bathymetric highs. The largest valley (>80 km) roughly parallels the New Madrid fault system, cutting its way across the U.S. as early as 60 mya with several secondary valleys originating off the Ouachita and Appalachian highlands. Isopach maps of Tuscaloosa parasequences; P0, P1, P2, P3 and Stringer, oldest to youngest respectively, show bypass along large valleys (P0 and P1) with pathways to the shelf in SE Louisiana, and the Mississippi and Florida Panhandles. P2 and P3 maps document transgression and flooding of the large estuaries with deposits dissected into channels, bars and interfluves. The Stringer, a transgressive backstepping shelf delta deposit, is incredibly productive with excellent overlying marine sealing shales. Rapidly deposited distal-delta front, hyperpycnal turbidites, are found in core as sharp-based, very fine-grained sandstone beds, (~ 1–2 ft) surrounded by muddy, burrowed siltstone. More proximal to the delta front, channel-mouth-bar facies are composed of fine-grained sandstone, show low-angle, planar stratification and ripple-laminated, fine-grained sandstone. Proximal fluvial facies, found north of the Louisiana-Mississippi state line are very coarse-grained, poorly sorted and abandon upward into mottled thick soil horizons.



# NEWS

## *MDEQ*



The Mississippi Department of Environmental Quality (MDEQ) would like everyone to know they have started putting old Survey Bulletins online. These Bulletins are available through:

<http://www.deq.state.ms.us>

Below is a list of sample links you can copy/paste into your browser.

[http://www.deq.state.ms.us/MDEQ.nsf/page/Geology\\_Bulletin131ATLASOFSHALLOWMISSISSIPPISALTDOMES?OpenDocument](http://www.deq.state.ms.us/MDEQ.nsf/page/Geology_Bulletin131ATLASOFSHALLOWMISSISSIPPISALTDOMES?OpenDocument)

[http://www.deq.state.ms.us/MDEQ.nsf/page/Geology\\_Bulletin129StreptoneuranGastropodsTheCoffee\\_SandCampanianNEMS?OpenDocument](http://www.deq.state.ms.us/MDEQ.nsf/page/Geology_Bulletin129StreptoneuranGastropodsTheCoffee_SandCampanianNEMS?OpenDocument)

[http://www.deq.state.ms.us/MDEQ.nsf/pdf/Geology\\_Bulletin125/\\$File/Bulletin%20125.pdf?OpenElement](http://www.deq.state.ms.us/MDEQ.nsf/pdf/Geology_Bulletin125/$File/Bulletin%20125.pdf?OpenElement)

[http://www.deq.state.ms.us/MDEQ.nsf/page/Geology\\_Bulletin123?OpenDocument](http://www.deq.state.ms.us/MDEQ.nsf/page/Geology_Bulletin123?OpenDocument)

[http://www.deq.state.ms.us/MDEQ.nsf/page/Geology\\_Bulletin100?OpenDocument](http://www.deq.state.ms.us/MDEQ.nsf/page/Geology_Bulletin100?OpenDocument)

[http://www.deq.state.ms.us/MDEQ.nsf/page/Geology\\_Bulletin23PaleozoicRocks?OpenDocument](http://www.deq.state.ms.us/MDEQ.nsf/page/Geology_Bulletin23PaleozoicRocks?OpenDocument)

[http://www.deq.state.ms.us/MDEQ.nsf/page/Geology\\_Circular-RocksAndFossilsFoundInMississippiGravelDeposits?OpenDocument](http://www.deq.state.ms.us/MDEQ.nsf/page/Geology_Circular-RocksAndFossilsFoundInMississippiGravelDeposits?OpenDocument)

[http://www.deq.state.ms.us/MDEQ.nsf/page/Geology\\_Circular-WindowsIntoMississippi%E2%80%99sGeologicalPast?OpenDocument](http://www.deq.state.ms.us/MDEQ.nsf/page/Geology_Circular-WindowsIntoMississippi%E2%80%99sGeologicalPast?OpenDocument)



# BOLAND SCHOLARSHIP WATCH

Faculty & Students,

2013 is here and the Mississippi Geological Society along with the Boland Scholarship Fund would like to remind you that we want to honor the most outstanding overall students for the 2012-2013 year.

Each year, the Boland Scholarship awards 1 student from each institution a check that rewards students for their hard work and dedication to the Geosciences and their community.

We look forward to a great year and hope to see you at our monthly meetings.

Best Regards,

Matt Caton  
Editor



THE UNIVERSITY OF  
SOUTHERN  
MISSISSIPPI

MILLSAPS  
COLLEGE



# **BOLAND SCHOLARSHIP DONATIONS**

**MGS would like to thank the following individuals for their generous donations to the Boland Scholarship Fund.**

**Maurice Birdwell**

**Ken McCarley**

**George Smith**

**Maurice Meylan**

**Terry Bryant**

**Jim Michael**

**Chris Franks**

**Meade Hufford**

**Dave Cate**

**Jak Douglas**

**If you would like to make a donation please see Bill Bagnall at the monthly meetings, or you can send your contribution to the following address:**

**Mississippi Geological Society  
PO BOX 422  
Jackson, MS 39205-0422**





# ARTICLE OF THE MONTH

## *Let's Avoid Smothering the Shale-Gas Gas Boom*

Let's not smother the shale-gas boom. It is the crown jewel of the disappointing economic recovery.

Why tamper with success? Yet, there are those who argue that shale gas' benefits could be maximized if we restricted gas exports, mainly as liquefied natural gas (LNG). This would, it's argued, keep prices low for U.S. consumers and manufacturers, contributing powerfully to the revival of American industry. Sounds convincing. It isn't.

Limiting LNG exports might initially cut prices, but the long-run consequences would be perverse. By depressing prices, we might kill the boom. Production would become less profitable or unprofitable, and new drilling would slow or stop.

This is not just supply and demand. It's also history. From 1954 to the early-1990s, the federal government regulated prices for interstate natural gas. Prices were held artificially low. "Shortages" developed in the 1970s; drilling suffered.

The shale-gas boom - the most important energy event in decades - is mostly a market phenomenon. The drilling techniques to extract gas from tight formations long considered uneconomic were first demonstrated by a small Texas company, Mitchell Energy. Other firms then perfected these techniques: "fracking" - injecting formations with highly-pressurized liquids - and "horizontal drilling."

Government agencies are studying whether added environmental regulation of fracking and wastewater disposal is needed. So far, hazards seem manageable. Mainly, the boom should be left alone to build on its considerable gains. Since 2000, U.S. natural gas production has risen by a quarter, with the increase coming mostly from shale gas. From 2000 to 2012, its share of production zoomed from less than 2 percent to 34 percent.

By 2040, the Energy Information Administration, the source of these figures, expects overall gas production to increase by nearly 40 percent. Shale gas' share would rise to about half.

By one study, the gas boom has created nearly 500,000 jobs for producers and their suppliers. Surging output has reduced wellhead prices more than half from stratospheric 2008 levels. In 2012, residential gas bills (which also cover transportation and distribution costs) are down 21 percent from 2008. Manufacturers consume about a third of U.S. natural gas as both a heating fuel and a petrochemical feedstock. Low prices are promoting investment by energy-intensive firms. Companies have announced at least 100 new projects or expansions worth an estimated \$90 billion, estimates Dow Chemical.



## ARTICLE Cont

Greenhouse gas emissions have also been curbed because natural gas, when used as an alternative to coal to generate electricity, produces about half as much carbon dioxide.

Finally, fracking and horizontal drilling have been applied to oil, spawning a parallel boom. In 2012, U.S. oil production is up 25 percent from 2008. That's about another 400,000 production and supplier jobs, estimates the consulting firm IHS.

The complaint that LNG exports might unwisely drive up natural gas prices comes from politicians and gas consumers. Sen. Ron Wyden, D-Ore., argues the Obama administration should ensure that "unfettered natural gas exports don't harm U.S. consumers and manufacturers." Dow Chemical says a "rush to export liquefied natural gas" could jeopardize the "tremendous competitive advantage for American industry" from low-price shale gas.

In theory, LNG might divert large volumes of natural gas because the wellhead price of U.S. gas is, on an energy-equivalent basis, much cheaper than oil. But in practice, this isn't likely: LNG isn't easily substituted for oil and is costly.

The expense of liquefying it to minus-260 degrees Fahrenheit and transporting it long distances in refrigerator tankers raises the price sharply. LNG projects are fabulously expensive. Sabine Pass in Louisiana, a project approved by the Department of Energy, will cost \$11 billion and could provide customers in Britain, South Korea, India and Spain with gas equal to about 3 percent of present U.S. supply.

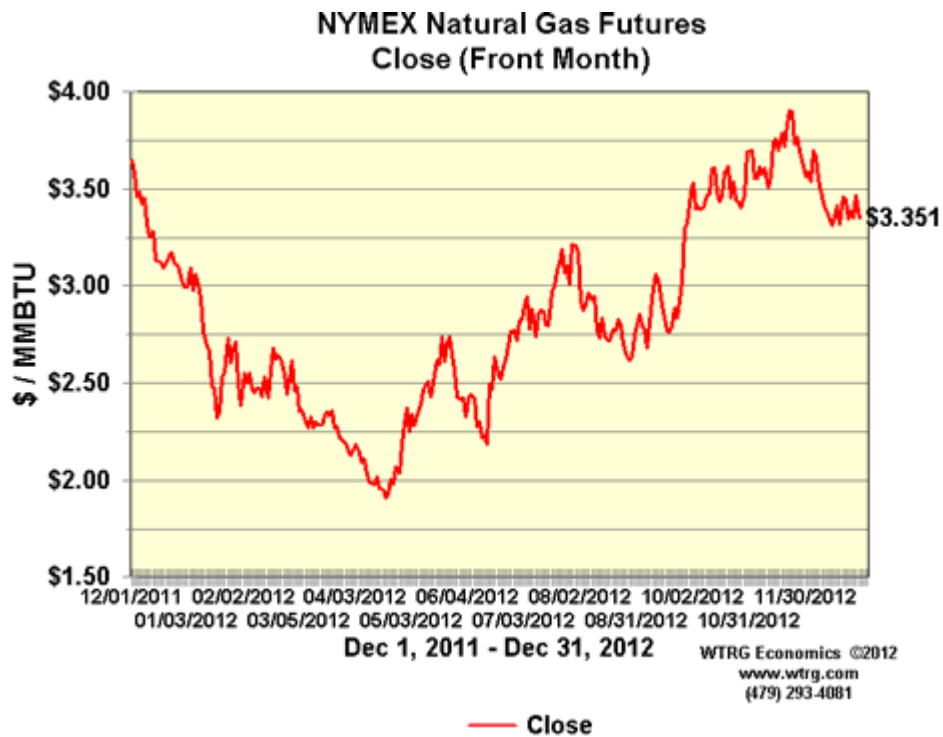
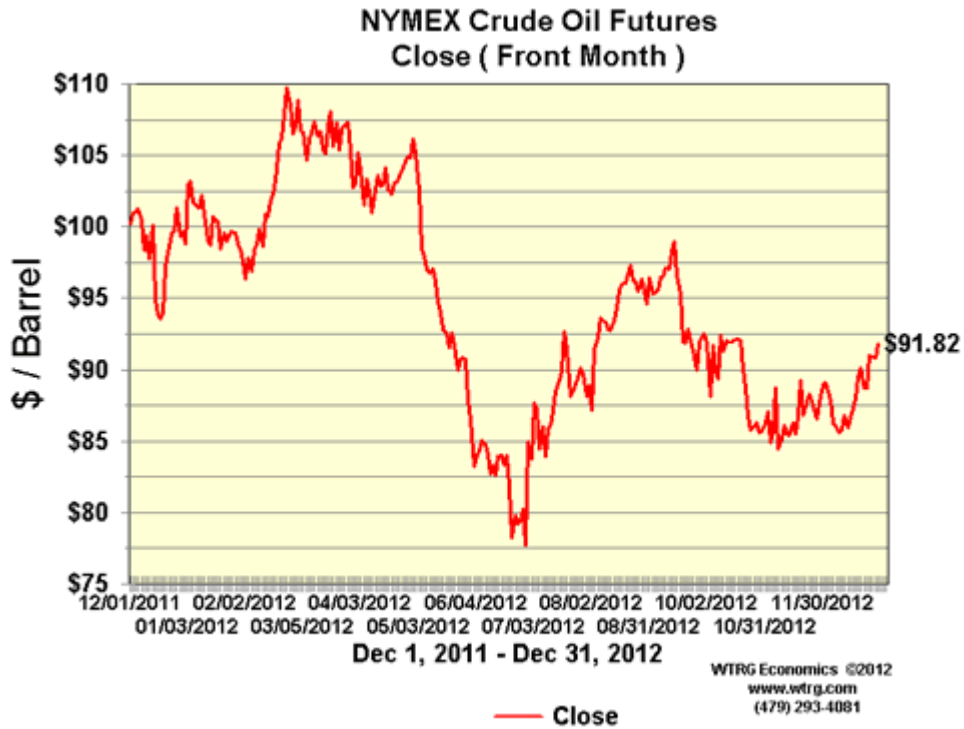
Exporting natural gas simply isn't as easy as exporting wheat. Unsurprisingly, LNG satisfied less than 10 percent of global gas demand in 2010. Nor are American producers guaranteed contracts. Other large suppliers (Qatar, Australia) might undercut U.S. prices. But the global LNG market could absorb some American shale-gas production. Why discourage this? A study commissioned by the Department of Energy suggests that the price impact would be modest.

The truth is that the United States needs domestic and foreign buyers for its natural gas. Supply is outpacing demand, leading to a collapse in prices and drilling activity. Gas rigs are down half from a year ago, reports the energy firm Baker Hughes. Prices can't be held at artificially low levels. Companies won't drill unless they can profitably sell what they find.

A policy that discriminates against producers in favor of consumers by restricting foreign sales will hurt both. The gas boom will recede as an engine of growth. For years, Americans have complained about trade deficits. Now that we have something more to sell, we shouldn't turn away customers.



# CURRENT PRICES



## Future Meetings of Selected Earth Science Organizations

EVENT	2011	2012	2013	2014	2015
AAPG Annual Convention & Exhibition (ACE)	10–13 April Houston, TX	22–25 April Long Beach, CA	19–22 May Pittsburgh, PA	6–9 April Houston, TX	31 May–3 June Denver, CO
AAPG International Conference & Exhibition (ICE)	23–26 October Milan, Italy	September Singapore	8–11 September Cartagena, Colombia		
AAPG Prospect & Property Expo-London (APPEX)	1–3 March London, UK	6–8 March London, UK			
AAPG Annual Leadership Conference	12–14 August Boulder, CO				
AAPG Foundation Trustee Associates	7–11 September Lake Tahoe, CA	28 Oct–1 Nov Scottsdale, AZ			
AAPG European Region Conference					
AAPG Eastern Section	25–27 September Washington, D.C.	22–26 September Cleveland, OH			
AAPG Gulf Coast Section (GCAGS)	16–19 October Veracruz, Mexico	21–23 October Austin, TX	Sept–Oct TBD New Orleans, LA	Sept–Oct TBD Lafayette, LA	Sept–Oct TBD Houston, TX
AAPG Mid-Continent Section	1–4 October Oklahoma City, OK				
AAPG Pacific Section	9–11 May Anchorage, AK	22–25 April Long Beach, CA			
AAPG Rocky Mountain Section (RMS)	26–29 June Cheyenne, WY	9–12 September Grand Junction, CO	TBD Salt Lake City, UT	TBD Denver, CO	
AAPG Southwest Section	5–7 June Ruidoso, NM	19–22 May Ft. Worth, TX			
AAPG Polar Petroleum Potential (3P)	30 Aug–2 Sept Halifax, Nova Scotia				
American Association of Petroleum Landmen (AAPL) Annual Meeting	8–11 June Boston, MA				
Arctic Technology Conference (OTC) <i>New!</i>	7–9 February Houston, TX	3–5 December Houston, TX			
Asia Pacific Oil & Gas Conference (SPE)	20–22 September Jakarta, Indonesia	22–24 October Perth, Australia			
Association of Environmental & Engineering Geologists (AEG)	19–24 September Anchorage, AK	TBD Salt Lake City, UT	TBD Seattle, WA		
Canadian Society of Petroleum Geologists (CSPG), Canadian Society of Exploration Geoscientists (CSEG), & Canadian Well Logging Society (CWLS)	9–13 May Calgary, AB, Canada				
European Assoc. of Geoscientists and Engineers (EAGE)	23–26 May Vienna, Austria	4–7 June Copenhagen, Denmark	9–14 June London, UK		
GEO India — South Asian Geosciences Conference & Exhibition	12–14 January New Delhi, India	Not Held			
GEO Middle East Geosciences Conference and Exhibition	Not Held	4–7 March Bahrain	Not Held		
Geological Assoc. of Canada/ Mineralogical Assoc. of Canada Annual Meeting	25–27 May Ottawa, ON, Canada	27–29 May St. John's, NL, Canada	22–24 May Winnipeg, MB, Canada		
Geological Society of America (GSA)	9–12 October Minneapolis, MN	4–7 November Charlotte, NC	27–30 October Denver, CO		
IPTC – International Petroleum Technology Conference (AAPG/EAGE/SEG/SPE)	15–17 November Bangkok, Thailand	5–7 December Beijing, China	2–4 December Doha, Qatar	TBD Kuala Lumpur, Malaysia	
National Association of Black Geologists & Geophysicist (NABGG)	7–10 September San Francisco, CA				
NAPE – North American Prospect Expo (AAPL) – Winter	16–18 February Houston, TX	22–24 February Houston, TX			
NAPE – North American Prospect Expo (AAPL) – Summer	17–19 August Houston, TX				
OTC – Offshore Technology Conference (SPE)	2–5 May Houston, TX	30 April–3 May Houston, TX	6–9 May Houston, TX	5–8 May Houston, TX	
PETEX (PESGB)	Not Held				
Society of Exploration Geophysicists (SEG)	18–23 September San Antonio, TX	4–9 November Las Vegas, NV	22–27 September Houston, TX	26–31 October Denver, CO	
Society of Independent Earth Scientists (SIPES)	20–23 June Jackson Hole, WY				
Society of Petroleum Engineers (SPE)	30 Oct–2 Nov Denver, CO	8–10 October San Antonio, TX	30 Sept–2 Oct New Orleans, LA		
Society of Professional Well Log Analysts (SPWLA)	14–18 May Colorado Springs, CO				

Shaded boxes indicate that all aspects of meeting are managed by the American Association of Petroleum Geologists  
Global Development and Conventions Department  
P.O. Box 979, Tulsa, Oklahoma 74101-0979 USA +1 918 560 2679  
Updated 14 July 2011 / Dates are subject to change

# GEO LINK POST

**USGS TAPESTRY OF TIME AND TERRAIN** <http://tapestry.usgs.gov> The CCGS is donating to all of the 5th and 6th grade schools in the Coastal Bend. Check it out—it is a spectacular map. You might want a framed one for your own office. The one in my office has glass and a metal frame, and it cost \$400 and it does not look as good as the ones we are giving to the schools. Call Owen 510-6224 if you want one for your office for \$150. Duncan, Mike, Chris, Dave, Bob Randy, Seb., Kevin, Ken, Craig, Patrick, Robert.

**FREE TEXAS TOPO'S** <http://www.tnris.state.tx.us/digital.htm> these are TIFF files from your state government that can be downloaded and printed. You can add them to SMT by converting them first in Globalmapper. Other digital data as well.

**FREE NATIONAL TOPO'S** [http://store.usgs.gov/b2c\\_usgs/b2c/start/\(xcm=r3standardpitrex\\_prd\)/.do](http://store.usgs.gov/b2c_usgs/b2c/start/(xcm=r3standardpitrex_prd)/.do) go to this webpage and look on the extreme right side to the box titled TOPO MAPS DOWNLOAD TOPO MAPS FREE.

<http://www.geographynetwork.com/> Go here and try their top 5 map services. My favorite is 'USGS Elevation Date.' Zoom in on your favorite places and see great shaded relief images. One of my favorites is the Great Sand Dunes National Park in south central Colorado. Nice Dunes.

<http://antwrp.gsfc.nasa.gov/apod/astropix.html> Astronomy picture of the day — awesome. I click this page everyday.

<http://www.spacimaging.com/gallery/ioweek/iow.htm> Amazing satellite images. Check out the gallery.

<http://www.ngdc.noaa.gov/seg/topo/globegal.shtml> More great maps to share with kids and students.

[www.geo.org](http://www.geo.org) Don't forget we have our own web page.

<http://micro.magneet.fsu.edu/primer/java/scienceoptiscu/owersof10/>

<http://asterweb.jpl.nasa.gov/galery/default.htm> Great satellite images of volcanoes

<http://terra.nasa.gov/gallery/> More here

[www.ermapper.com](http://www.ermapper.com) They have a great free downloadable viewer for TIFF and other graphic files called ER Viewer.

[www.drillinginfo.com](http://www.drillinginfo.com) This is an incredible (subscription) well and completion data service for independents. Can be demo'ed for free.

<http://terrasrver.com/> Go here to download free aerial photo images that can be plotted under your digital land and well data. Images down to 1 meter resolution, searchable by Lat Long coordinate. Useful for resolving well location questions.

<http://www.fs.fed.us/gpnf/volcanocams/msh/> This is a live cam of Mt. St. Helens refreshed every 5 minutes. At the bottom are old videos of past eruptions in this cycle. It is worth a watch especially now.



# GEOLOGY POST

## ARTICLES, PAPERS or NEWS?

**ATTENTION!!!!!!** Industry, Professors and Students:

We would like to add a dedicated section that includes more content from the industry and our schools.

Submissions can include anything from professional papers, thesis abstracts, job opportunities to pictures. Anything!!!!

If you have any information or news you would like to share with the Society **PLEASE** email them to the MGS Editor at:

[mcaton@tellusoperating.com](mailto:mcaton@tellusoperating.com)

Thanks & Regards,

Matt Caton  
Editor



# MGS HONORARY MEMBERS

**Esther Applin\***

**Verne Culbertson \***

**David C. Harrell\***

**Dudley J. Hughes**

**Walter P. Jones\***

**Winnie McGlammery\***

**Maurice E. Miesse\***

**Marvin E. Norman\***

**Thurston Connell Rader\***

**Henry Toler\***

**Charles H. Williams**

**David Cate**

**Paul Applin\***

**H. Leroy Francis\***

**Oleta R. Harrell\***

**Urban B. Hughes\***

**Harold Karges\***

**Thomas McGlothin\***

**Emil Monsour\***

**Marvin L. Oxley\***

**Baxter Smith\***

**H. Vaughn Watkins**

**Jerry Zoble**

**Lawrence F. Boland\***

**Jim Furrh\***

**Ralph Hines**

**Wendell B. Johnson \***

**Wilbur H. Knight\***

**Frederic F. Mellen\***

**William H. Moore\***

**Richard R. Priddy\***

**Harry V. Spooner**

**Stewart W. Welch\***

**Julius Ridgeway**

**\* deceased**

**MEMBERSHIP APPLICATION / RENEWAL FORM**

**MISSISSIPPI GEOLOGICAL SOCIETY**

**P.O. BOX 422, JACKSON, MISSISSIPPI 39205-0422**

**2012-2013**

Membership year is June through May

New Membership (\$20/yr)\_\_\_\_\_ Renewal (\$20/yr)\_\_\_\_\_ Student (FREE)\_\_\_\_\_ Associate (\$20/yr)\_\_\_\_\_

Boland Scholarship Fund Donation \$ \_\_\_\_\_ Total Amount Enclosed \$ \_\_\_\_\_

Last Name: \_\_\_\_\_ First: \_\_\_\_\_ MI: \_\_\_\_\_

Mailing Address: \_\_\_\_\_

Office Phone: \_\_\_\_\_ Home Phone: \_\_\_\_\_ FAX: \_\_\_\_\_

E-mail Address: \_\_\_\_\_

College/University Attended: \_\_\_\_\_

Degree(s) Obtained and Year(s) Awarded: \_\_\_\_\_

Professional Associations, Certifications, & Licenses: \_\_\_\_\_





# 2012-2013 MGS MEMBERS

John Ables	Ken Adams	Chris Bowen	Ken McCarley
O Bill Bagnall	Larry Baria	Roger Chapman	James Landrem
O Neil Barnes	Randy Bissell	Tom Giosa	Thang Pham
Maurice Birdwell	Terry Bryant	Mitchell McMillan	William Potthoff
Robert Branson	Alvin Byrd	Tom McMillan Jr.	Gary Slade
O Matt Caton	Dave Cate	Armando Ricci	Michael Spooner
Sara Davis	Phil Cook	Larry Baria	Ed Stricker
Dave Easom	Chris Franks	Michael Bograd	Don Smith
O Jim Files	Bob Gaston	Lynn Boone	Andrew Sylte
O Todd Hines	David Handcock	Alvin Byrd	Erik Tangumonkem
O Joe Johnson	Bernard Holman	J C Carlisle	Mike Taylor
James Landrem	Joe McDuff	Charles Doubek	Janet Verret
Ken McCarley	Phillip Meadows	Jak Douglas	Steve Walker
Shawn Pool	Bob McElroy	Dave Easom	Fred Walsh
Philip Reeves	Maurice Meylan	Rick Ericksen	Rob Weyman
Bob Schneeflock	James Michael	Mary Giesler	Bradley Winton
Howard Samsel	Jack Moody	Frank Heitmuller	
Don Smith	Charlie Morrison	I. Meade Hufford	
George Smith	Jim Nix	Kevin Jefferys	
Jim Stephens	James Norris	Arthur Johnson	
John Sullivan	Billy Powell	Jim Johnson	
Tom Sylte	Thomas Seitz	Lars Johnson	
Mike Taylor	George Self	Barbara Kearney	
Sid Thompson	Jimmy Sparks	Cody Lenert	
Steve Walkinshaw	Tony Stuart	Michael Lieser	
Johnny Holifield	Stan Thieling	Ken Magee	
Joe White			

\*This list is updated on a monthly basis.

(O) - Officer

(H) - Honorary

## MGS ADVERTISING ORDER FORM

September 2012 – May 2013

### I. Bulletin Advertisements:

<u>Size</u>	<u>Rate/Year</u>	<u>Amt. Remitted</u>
Full Page Ad (6" x 8")	\$500	\$ _____
1/2 Page Ad (6" x 4")	\$300	\$ _____
1/4 Page Ad (3" x 4")	\$200	\$ _____
Business Card Ad (1 1/2" x 3")	\$100	\$ _____
Professional Listing (1/2" x 3")	\$ 50	\$ _____

### II. Web Page Advertisements (www.missgeo.com):

<u>Type of Web Page Ad</u>	<u>Rate/Year</u>	<u>Amt. Remitted</u>
Front Page Sponsor (Banner Ad – limit of 5)	\$500	\$ _____
Second Page Banner Ad	\$250	\$ _____
Professional Listing/Link	\$100	\$ _____

(Note: Please contact Steve Walkinshaw at (601) 607-3227 or mail@visionexploration.com for details concerning placing your ad on the MGS web site.)

**Total Remitted** \$ \_\_\_\_\_

Please make checks payable to the Mississippi Geological Society. If you have any questions, contact Matt Caton at (601) 898-7444 or mcaton@tellusoperating.com

**SEI**®

**SEISMIC EXCHANGE, INC.**

201 St. Charles Ave., Suite 4300  
New Orleans, LA 70170-4300  
(504) 581-7153 • Fax (504) 581-9591

**HOWARD PATTON**

**PRUET OIL COMPANY, LLC**

**OIL & GAS EXPLORATION**

**217 WEST CAPITOL STREET  
JACKSON, MS 39201**

**OFFICE: (601) 948-5279 Fax: (601) 944-1281**

**W. LESTER AULTMAN**

125 South Congress St., Suite 1212, Jackson, MS 39201  
Office (601) 353-2738 Res. (601) 924-4830

**VANTAGE OIL COMPANY**

7170 Tank Road (601) 878-0593  
Terry, MS 39170



**BEAN RESOURCES, INC.**

**THOMAS A. GIOSA**  
Geologist

P. O. Box 52768 (70505)  
1000 E. St. Mary Blvd.  
Lafayette, La. 70503

Off. (337) 234-2326  
Fax (337) 234-2330  
Cell (337) 288-4089

**BRUNINI**

**WATTS C. UELTSCHY**

OFFICE (601) 960-6871 | FAX (601) 960-6902

E-MAIL [WATTS@BRUNINI.COM](mailto:WATTS@BRUNINI.COM) | [WWW.BRUNINI.COM](http://WWW.BRUNINI.COM)

BRUNINI, GRANTHAM, GROWER & HEWES, PLLC  
ATTORNEYS AT LAW

190 EAST CAPITOL STREET SUITE 100 JACKSON, MS 39201  
MAILING ADDRESS: P.O. DRAWER 119 JACKSON, MS 39205



**Day Dreams Resources, LLC**

**Jerry P. Ogden**

**OIL AND GAS EXPLORATION AND PRODUCTION  
CONSULTING PETROLEUM ENGINEER**

Jerry P. Ogden, Pet. Eng.

P. O. Box 101  
Natchez, MS 39121  
email: [ogdenjerry@bellsouth.net](mailto:ogdenjerry@bellsouth.net)

Office (601) 446-8105  
Fax (601) 446-8844  
Cell (601) 807-1000



401 Edwards Street, Suite 1200  
Shreveport, LA 71101

P.O. Box 1367  
Shreveport, LA 71164

office: (318) 222-8406  
fax: (318) 222-6061  
email: [mei@marlinexploration.com](mailto:mei@marlinexploration.com)



**Jason Stockstill**  
Marketing Representative

**DAWSON GEOPHYSICAL COMPANY**

508 West Wall, Suite 800  
Midland, Texas 79701-5010  
Telephone 432/684-3000  
Fax 432/684-3030  
Cell 432/967-4099  
e-mail: [stockstill@dawson3d.com](mailto:stockstill@dawson3d.com)

**Jon Q=Petersen**  
President

**S. Cody Lenert**  
Geologist

**Autie T. Orjias**  
V.P./Land Manager

**Ryan Q=Petersen**  
Land

**Dean Giles**  
Secretary/Treasurer

**Rhonda White**  
Admin. Assistant

**Joe R. White, Jr.**  
Chief Geologist



# ENERGY DRILLING COMPANY <sup>®</sup>

CONTRACT DRILLING 3000 – 15,000 FEET  
MS-AL-FL-ARK-LA-TEX

Pat Burns, Jr.

Jody Helbling

Nestor Navarro

601-446-5259

(Fax)601-446-8607

P. O. Box 905

413 Liberty Rd.

Natchez, MS 39121



OPERATING GROUP, LLC

## **OPERATING GROUP, LLC**

**602 Crescent Place, Suite 100**

**Ridgeland, MS 39157**

**601-898-7444 Voice**

**601-898-7446 Fax**

**BRIAN SIMS**

**EXPLOITATION GEOLOGIC MANAGER**

Email: [bsims@tellusoperating.com](mailto:bsims@tellusoperating.com)

# OWLCO

Oil Well Logging Company  
P. O. Box 1692  
Madison, MS 39130  
(601) 477-8315



**MOCO INC.**  
The Mississippi Oil Company

MICHAEL L. BLACKWELL  
H. DON NOBLITT

603 Northpark Drive • Ridgeland, MS 39157  
(601) 957-3550



**Karl J. Kaufmann**  
*President*

Suite B  
546 Keyway Drive  
Jackson, MS 39232

601-936-3601  
Fax 601-936-3646  
coukauf@aol.com

**BLAIR & BONDURANT, P.A.**  
ATTORNEYS AT LAW

WILLIAM F. BLAIR

P.O. Box 321423      1368 Old Fannin Road  
Jackson, MS 39232      Suite 300  
Telephone: (601) 992-4477      Brandon, MS 39047  
Telecopier: (601) 992-9189      Email:



**TROPHY  
PETROLEUM  
CORPORATION**

100 N. Van Buren Street  
Post Office Box 415  
Carthage, MS 39051  
(601) 298-0200 (601) 298-0201 Fax

E. Wayne Upchurch  
President



**John G. Cox**  
Geologist

603 Northpark Drive, Suite 300      601.978.1763  
Ridgeland, Mississippi 39157      fax 601.952.0425  
john\_cox@bellsouth.net

# BRUXOIL, INC.

DAVID K. BROOKS - PRESIDENT  
RAYMOND A. HELFRICH - VICE PRESIDENT  
DOROTHY M. JAUBERT

P. O. Box 16929  
Jackson, MS 39236  
(601) 981-5722  
FAX: (601) 366-9490



**ROUNDTREE & ASSOCIATES, INC.**  
OIL AND GAS PRODUCTION  
210 Trace Colony Park Drive,  
Ridgeland, MS 39157  
Phone (601) 355-4530

**MOON & HINES**  
OIL & GAS EXPLORATION

**MOON-HINES-TIGRETT OPERATING CO., INC.**  
PROPERTY MANAGEMENT

P O BOX 3216  
RIDGELAND, MS 39158

OFFICE (601) 572-8300      FAX (601) 572-8310



**KELTON OPERATING COMPANY, INC.**  
since 1953

605 SUN TRUST TOWER  
220 W. GARDEN STREET  
PENSACOLA, FL 32501  
P.O. BOX 230  
PENSACOLA, FL 32591

TELEPHONE  
(850) 434-6830  
FACSIMILE  
(850) 434-6842

**Boone**  **Exploration, Inc.**

Lynn D. Boone  
*President*

J.C. Carlisle  
*Vice President*

21 Wire Road  
P.O. Box 8660  
Huntsville, TX 77340

Phone: 936-295-4066  
Fax: 936-295-4042  
Email: jcc9551@aol.com

**Energy Land Services**

Oil & Gas Leases

**I. Meade Hufford, CPL**

Owner

P. O. Box 302  
144 Wharton Grove Ln  
Weems, VA 22576

Phone: 804-438-5852  
Fax: 804-438-9043  
Cell: 713-705-7235  
hufford1913@aol.com

**JULIUS M. RIDGWAY**

**COASTAL EXPLORATION, INC.**

1437 OLD SQUARE ROAD, #104  
JACKSON, MISSISSIPPI 39211

601-362-0502  
FAX: 601-362-5397

**SPOONER PETROLEUM COMPANY**

210 East Capitol St., Suite 956  
Jackson, Mississippi 39201

**Oil & Gas Production & Exploration  
Contract Operations**

601-969-1831

**JAMES B. FURRH, Jr., Inc.**

*Oil & Gas Exploration*

4450 Old Canton Road, Suite 205,  
Jackson, MS 39211  
Phone (601) 982-9393 Fax (601) 982-9785

**E. GEOFFREY JEFFREYS**

*Petroleum Consultant*

**OIL, GAS AND MINERAL APPRAISALS**

115 Fairway Drive  
Daphne, AL 36526  
[egjeffreys@aol.com](mailto:egjeffreys@aol.com)

Off (251) 621-1850  
Fx (251) 621-1630  
Cell (251) 709-7919

**Bryant Miller**

1837 Peachtree Street  
Jackson, MS 39202

[bryantgmiller@bryantgmiller.com](mailto:bryantgmiller@bryantgmiller.com)

**ENERGEN**  
RESOURCES

**President & COO**

**John Richardson**

**Senior Vice President**

**Operations**

**Paul Sparks**

**General Manager**

**Acquisitions & Engineering**

**Gene Cash**

**General Manager**

**Geology**

**Ron Tisdale**

**General Manager**

**Land**

**Paul Rote**

**(205)326-2721**

**Joseph H. McDuff**  
Geologist

351 Chapel Loop  
Mandeville, LA 70471  
985.845.9430

[jhmcduff@charter.net](mailto:jhmcduff@charter.net)



**Diversified Land  
Management, Inc.**

**PERMIT ACQUISITION  
SPECIALISTS**

**Jack Tate**

President

Office: 337.886.0060

Fax: 337.886.0064

Cell: 601.259.1366

email: [geoagent46@aol.com](mailto:geoagent46@aol.com)

[dminconline.com](http://dminconline.com)

"A company committed to excellence and achieving success while providing professional permitting acq. & project mngt. with the client's interests & concerns top priority"

# Get More



**Weatherford**<sup>®</sup>

LABORATORIES

[weatherfordlabs.com](http://weatherfordlabs.com)

© 2012 Weatherford. All rights reserved. Incorporates proprietary and patented Weatherford technology.

With reservoirs becoming increasingly complex, you need the most accurate information you can get to better understand your reservoir.

Weatherford Labs helps you get more from your core by combining an unsurpassed global team of geoscientists, engineers, technicians and researchers with the industry's most comprehensive, integrated laboratory services worldwide. From core analysis, sorption, geochemistry and isotopic composition to detailed basin modeling and comprehensive data packages, we provide you with real reservoir rock and fluid information that hasn't been distilled by a simulator or iterated by software.

We call it "The Ground Truth"<sup>™</sup> – giving you the accurate answers you need for better reservoir understanding. You'll call it a better return on your reservoir investment. To learn more, contact

[TheGroundTruth@weatherfordlabs.com](mailto:TheGroundTruth@weatherfordlabs.com).

**Denbury**

5320 Legacy Drive  
Plano, TX 75024

**Denbury Resources, Inc.**

*Denbury Resources, Inc. is a growing independent oil and gas company. The Company is the largest oil and natural gas operator in Mississippi and Montana, owns the largest reserves of CO<sub>2</sub> used for tertiary oil recovery east of the Mississippi River, and holds significant operating acreage in the Rockies, Permian Basin, Mid-Continent and Gulf Coast. The Company's goal is to increase the value of acquired properties through a combination of exploitation, drilling and proven engineering extraction practices, with its most significant emphasis relating to tertiary recovery operations.*

NYSE: DNR  
[www.denbury.com](http://www.denbury.com)

Denbury Resources Inc.

**BRANCHING  
OUT**



# MGS PAST PRESIDENTS

1939-1940	Henry N. Toler	1973-1974	Larry Walter
1940-1941	Urban B. Hughes	1974-1975	W. E. "Gene" Taylor
1941-1942	J. Tom McGlothlin	1975-1976	Jerry E. Zoble
1942-1943	Dave C. Harrell	1976-1977	P. David Cate
1943-1944	K. K. "Bob" Spooner	1977-1978	Sarah Childress
1944-1945	L. R. McFarland	1978-1979	Les Aultman
1945-1946	J. B. Story	1979-1980	Philip R. Reeves
1946-1947	Frederic F. Mellen	1980-1981	Marshall Kern
1947-1948	H. Lee Spyles	1981-1982	Stephen Oivanki
	Robert D. Sprague	1982- 1983	James W. "Buddy" Twiner
1948-1949	Robert D. Sprague	1983- 1984	Charles H. Williams
1949-1950	E. T. "Mike" Monsour	1984- 1985	C. Kip Ferns
1950-1951	J. Tate Clark	1985-1986	Steven S. Walkinshaw
	Charles E. Buck	1986-1987	J. R. "Bob" White
1951-1952	George W. Field	1987-1988	Harry Spooner
1952-1953	James L. Md11in, Jr.	1988-1989	Stanley King
1953-1954	Wilbur H. Knight	1989-1990	Stan Galicki
1954-1955	A. Ed Blanton	1990-1991	E. James Files, Jr.
1955-1956	Gilbert A. Talley	1991-1992	Stephen L. Ingram, Sr.
1956-1957	Ben Ploch	1992-1993	Michael Noone/Stanley King
1957-1958	Emil Monsour	1993-1994	Brian Sims
1958-1959	Charles Brown	1994-1995	C. W. "Neil" Barnes
1959-1960	M. F. Kirby	1995-1996	Lester Aultman
1960-1961	Rudy Ewing	1996-1997	Jack S. Moody
1961-1962	Xavier M. Franscogna	1997-1998	George B. Vockroth
1962-1963	Robert B. Ross	1998-1999	Rick L. Ericksen
1963-1964	William A. Skees	1999-2000	Stanley King
	Marvin Oxley	2000-2001	John C. Marble
1964-1965	James F. Bollman	2001-2002	Andrew T. Sylte
1965-1966	Sankey L. Blanton	2002-2003	Aaron Lasker
1966-1967	Alan Jackson	2003-2004	John G. Cox
1967-1968	Julius M. Ridgway	2004-2005	James E. Starnes
1968-1969	Edward D. Minihan	2005-2006	Todd Hines
1969-1970	Kevin E. Cahill	2006-2007	Bob Schneeflock
1970-1971	John Lancaster	2007-2008	Tony Stuart
1971-1972	Larry Boland	2008-2009	Lisa Ivshin
		2009-2010	Joe Johnson
		2010-2011	Brian Sims
		2011-2012	Stanley King