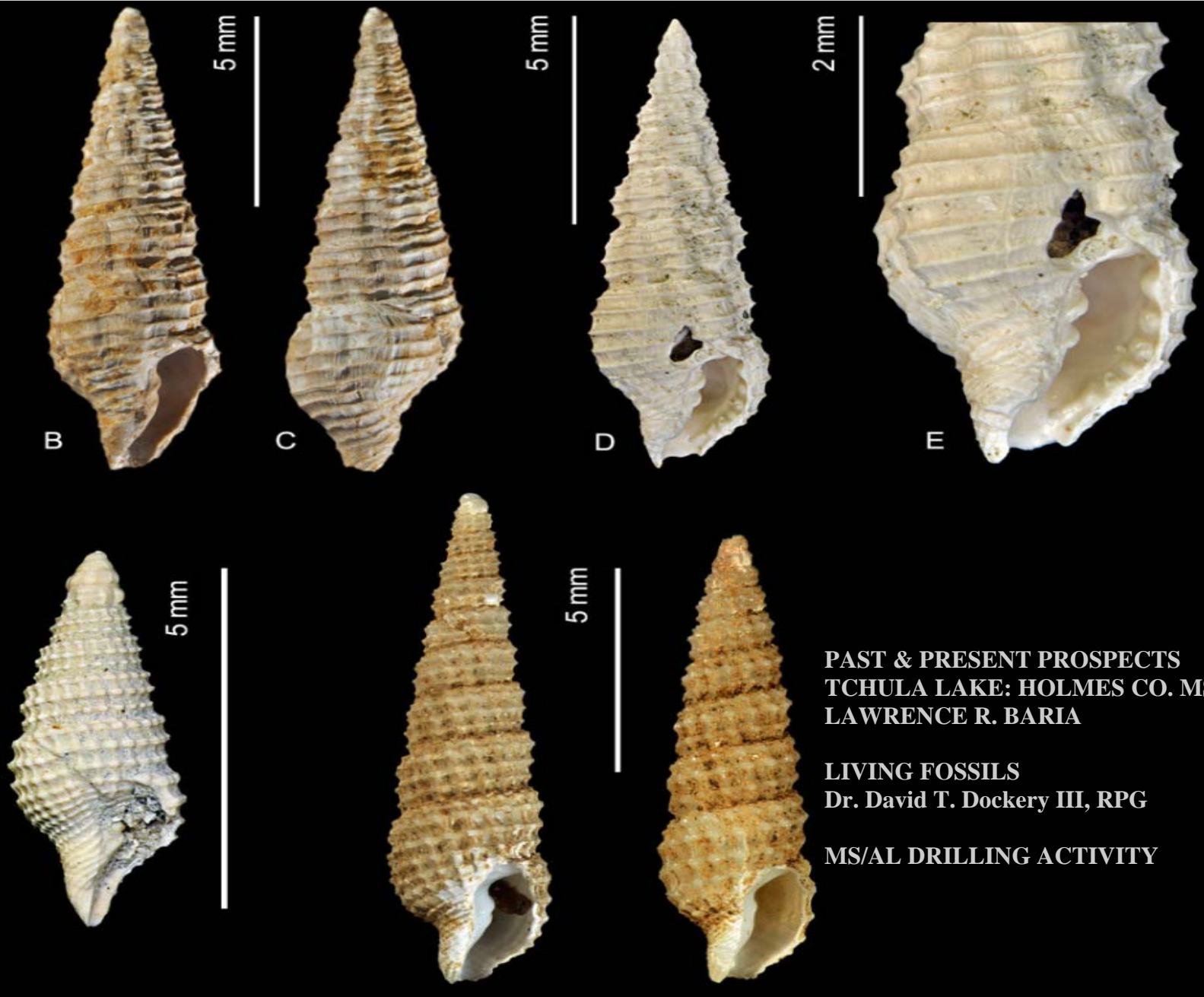


MISSISSIPPI GEOLOGICAL SOCIETY
eBULLETIN

Volume 64

No. 4

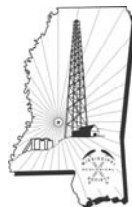
December 2015



**PAST & PRESENT PROSPECTS
TCHULA LAKE: HOLMES CO. MS
LAWRENCE R. BARIA**

**LIVING FOSSILS
Dr. David T. Dockery III, RPG**

MS/AL DRILLING ACTIVITY



www.missgeo.com



MGS 2015-2016 BOARD OF DIRECTORS

Officers

| | | | | |
|---------------------------|------------------|--------------------|--|----------------|
| President | Jack Moody | Independent | jsmpoststate@gmail.com | (601) 942-5025 |
| 1st Vice President | Craigin Knox | Waggoner | Cragin.knox@waggonereng.com | (601) 355-9526 |
| 2nd Vice President | Joe Johnson | Spooner Petroleum | jjohnson@spoonercompanies.com | (601) 898-7444 |
| Treasurer | Bill Bagnall | BLM | wbagnall@blm.gov | (601)-977-5417 |
| Webmaster | Steve Walkinshaw | Vision Exploration | steve@visionexploration.com | (601) 607-3227 |
| Advertising | Matt Caton | Tellus Operating | mcaton@tellusoperating.com | (601) 898-7444 |
| Editor | Matt Caton | Tellus Operating | mcaton@tellusoperating.com | (601) 898-7444 |

Boland Scholarship

| | | | | |
|------------------|-----------------|-----------------------|--|----------------|
| President | Jack Moody | Independent | | |
| Secretary | Dave Cate | Pruet Oil | | (601) 948-5279 |
| Members | Neil Barnes | Independent | | |
| | Tony Stuart | Venture Oil & Gas | | (601) 428-7725 |
| | James Starnes | DEQ | | |
| | Bob Schneeflock | Geodigital Consulting | | (601) 853-0701 |

Honorary Membership

| | | | | |
|-----------------|--|-------------|--|----------------|
| Chairman | Charles H. Williams, Jr. Vaughey & Vaughey | | | (601) 982-1212 |
| Members | E. Ralph Hines | Moon-Hines | | (601) 572-8300 |
| | Jerry Zoble | Independent | | |

MGS Representatives

| | | | |
|--------------|------------------|-------------------|----------------|
| AAPG | Maurice Birdwell | Milbird Resources | (601) 936-6939 |
| GCAGS | Danny Harrelson | U.S. Army R&D | (601) 634-2685 |

Other

| | | | |
|----------------------|--------------|-------------|----------------|
| Environmental | John Ryan | Allen | (601) 936-4440 |
| Historian | Stanley King | Independent | (601) 842-3539 |

2015-2016 MGS MEETING SCHEDULE

| When | What/Who | Where |
|--------------------|--|----------------------------|
| September 10, 2015 | Fall BBQ | Jackson Yacht Club-5:30pm |
| October 8, 2015 | Todd Keifer Energy & Power in MS | River Hills – 11:30am |
| November 12, 2015 | Danny Harrelson Canals & River Cutoffs as a tactic during Vicksburg Campaign of American Civil War | River Hills – 11:30am |
| December 2015 | MAPL Christmas Party—CANCELLED | |
| January 7, 2016 | Lawrence R. Baria Relatively Large Mid-Ramp, Highstand, Microbialite Patch and Fringing Reefs, A New Exploration Play for South Alabama | River Hills – 11:30am |
| February 11, 2016 | TBD | River Hills – 11:30am |
| March 10, 2016 | TBD | River Hills – 11:30am |
| April 7, 2016 | Boland Scholarship Awards | River Hills – 11:30am |
| May 12, 2016 | Spring Fling | Jackson Yacht Club– 5:30pm |



OFFICERS MEETINGS

| |
|-------------------|
| September 8, 2015 |
| October 6, 2015 |
| November 10, 2015 |
| January 5, 2016 |
| February 9, 2016 |
| March 8, 2016 |
| April 5, 2016 |
| May 10, 2016 |



PRESIDENT'S LETTER

Jack Moody



Another Thanksgiving season has come and gone. The majority of us have a great deal to be thankful for as we look at the passing year, even if you take into account the falling prices of oil and gas. This downturn is yet another in an industry with a long history of enjoyable expansions and difficult contractions. Through thick and thin, ups and downs, there is and will be an American independent oil and gas industry in the USA. The players do change somewhat but there are an awful lot of these folks who know how to weather the vicissitudes of the upstream oil and gas industry. Places like Jackson, Shreveport, Tyler, Bakersfield, Midland and many others have populations of experienced oil and gas professionals who will adjust to the new order and continue plying their trade. I've recently heard of a promoted drilling deal which sold rather quickly. The geology looked good and the economics were attractive at current prices. We've all heard the saying "good deals always sell" and so it seems. The challenge for us is to come up with those "good deals" that fit the market. I also heard a friend relating the most recent drilling cost bid he received and it was significantly lower than in the past few years. The cost will eventually line up with product prices and the beat will go on. Another good friend was telling me about a well that he recently logged and it looked good, real good. Even in these currently tougher times the dream is still alive and working. Perhaps only in America, where private mineral ownership can collaborate with small oil and gas independents, can all of us connected to the business chase the dream of that nice discovery and what it could mean to all involved. I hope all of you enjoy the hunt and have your share of success. We have a great deal to be thankful for and remember the old saying, when things get tough the tough get going. For the rest of our geologist members not in oil and gas, enjoy your rather steady environment. It may lack some of the oil and gas excitement of the good times, but oh these ups and downs can be trying. My best wishes to all of you and your families.

Jack Moody



IMPERIAL BARREL AWARD

Open Registration

ATTENTION!

Dear GCAGS Society Presidents,

Please pass the below information on to your society's members via your website, bulletin, newsletter, e-mail blast or whatever method is best for your society.

Registration for the **2016 Imperial Barrel Award** is now open. Encourage the graduate schools in your area to participate. Please visit the **new website** at <http://iba.aapg.org/program> to find out more about this prestigious competition for geoscience graduate departments.

If you would like to **sponsor the competition** please visit <http://iba.aapg.org/sponsorship> (be sure to **designate your contribution to the Gulf Coast Section**) or contact Tom Bulling or Janice Gregory-Sloan for more information (bullintp@bp.com or jgregorysloan@gmail.com)

Regards,

Kate Kipper
[512-925-1200](tel:512-925-1200)



PAST & PRESENT PROSPECTS

Tchula Lake Prospect

TCHULA LAKE FIELD 1st R-DEVELOPMENT (1987)

Holmes County, Mississippi

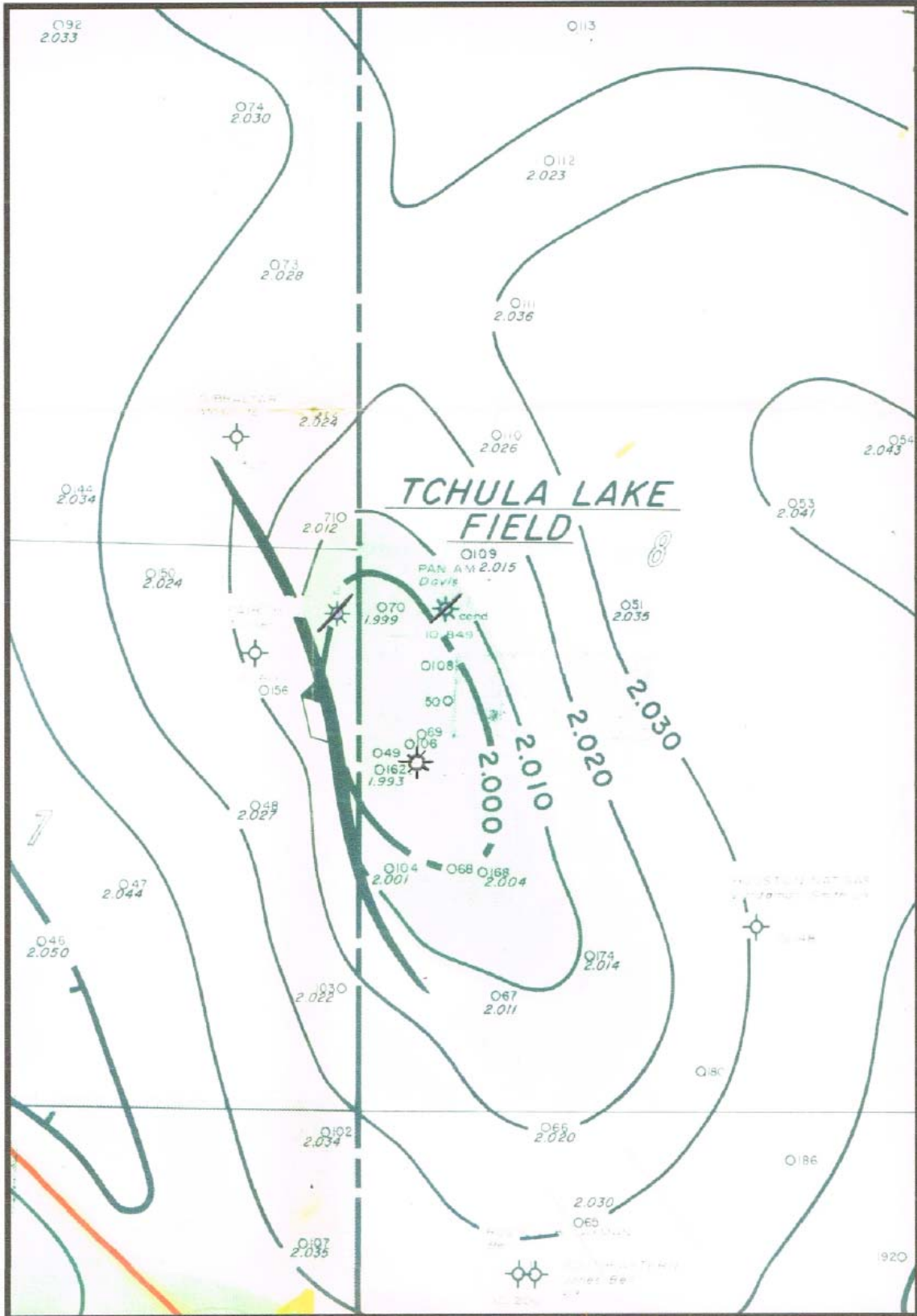
After the acquisition and reprocessing of modern (1987) seismic data, Triad Oil and Gas felt like we could drill an attic well at Tchula Lake Field and get roughly 60-80' high to the 1965 discovery well (Amoco #1 Davis). Upon drilling the Triad #1 Davis we encountered a couple hundred feet of Buckner Anhydrite and then drilled into several hundred feet of the Smackover Formation with excellent shows of oil and gas in the upper 160'. At the time of logging (1987) downhole logging tools had just come into use in Mississippi. You can imagine my disappointment when the logging tool exhibited the same resistivity and Gamma Ray characteristics seen in the impermeable Buckner Anhydrite extending down over the 160' interval which had previously provided the shows. Until the second log run (porosity tool) it appeared that our excellent shows of hydrocarbons might be attributable to fractured, tight and brittle Buckner limes and anhydrites. However, after obtaining our complete log suite and core analysis we realized that we did have a 160' oil column with 100 ohms resistivity, 18% porosity, and best of all, original bottom hole pressures. On initial test the well produced at rates of 5 MMCFGPD and 250 BCPD. It was exciting to note that during testing the flare stack went out and upon re-ignition the entire surface of the mud pit briefly caught on fire. It was only by throwing rocks, boards and scrap iron into the pits and splashing up fresh mud did we keep the boarded location from catching fire.

Lawrence R. Baria



PAST & PRESENT PROSPECTS

Tchula Lake Prospect

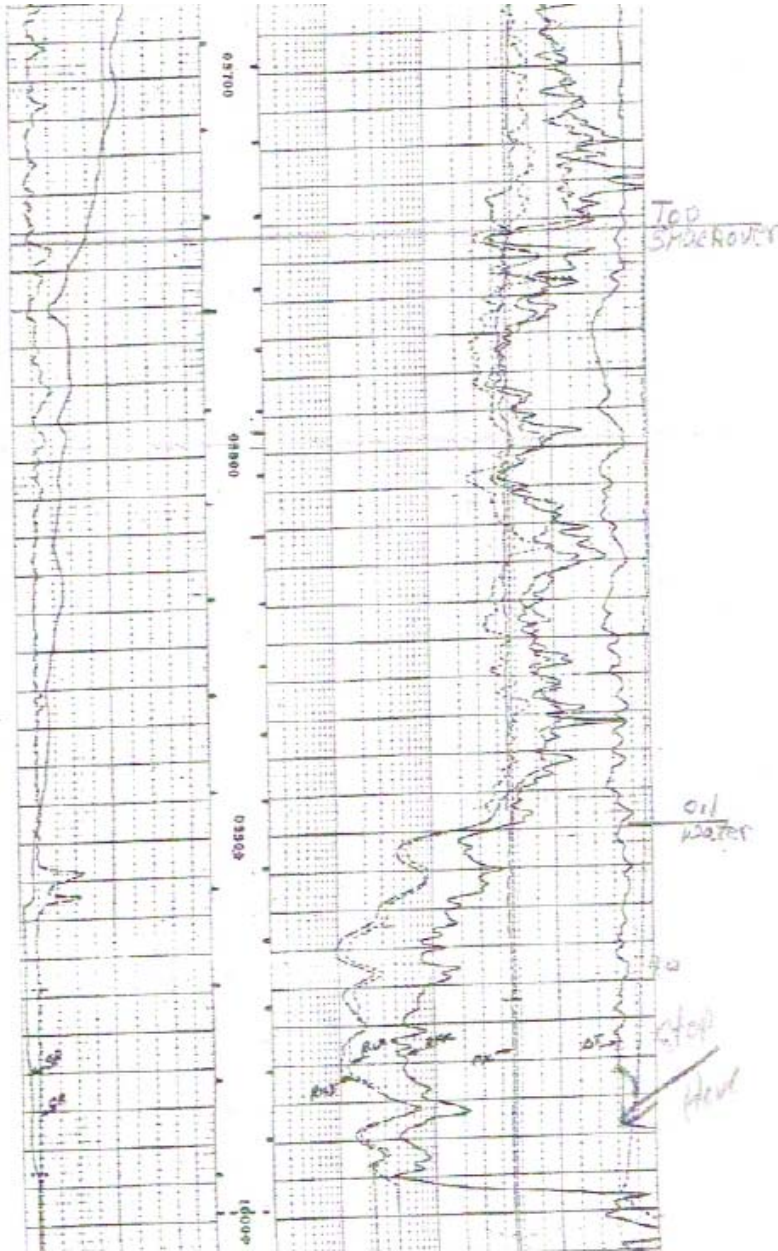




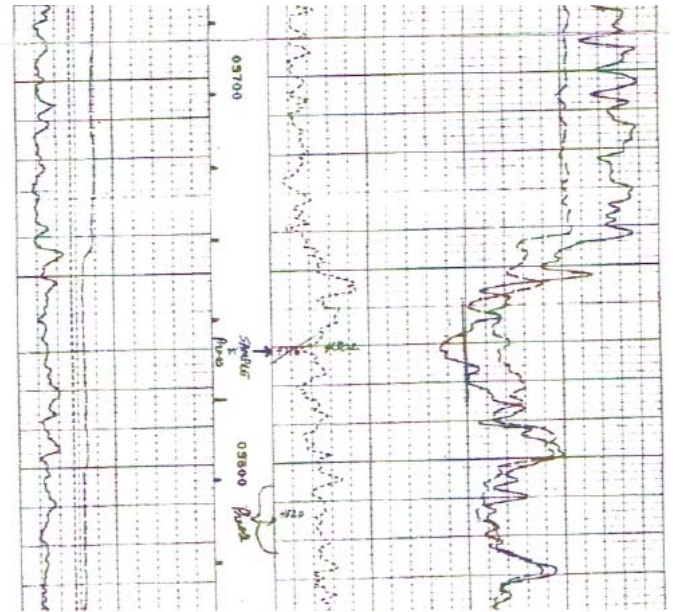
PAST & PRESENT PROSPECTS

Tchula Lake Prospect

Resistivity



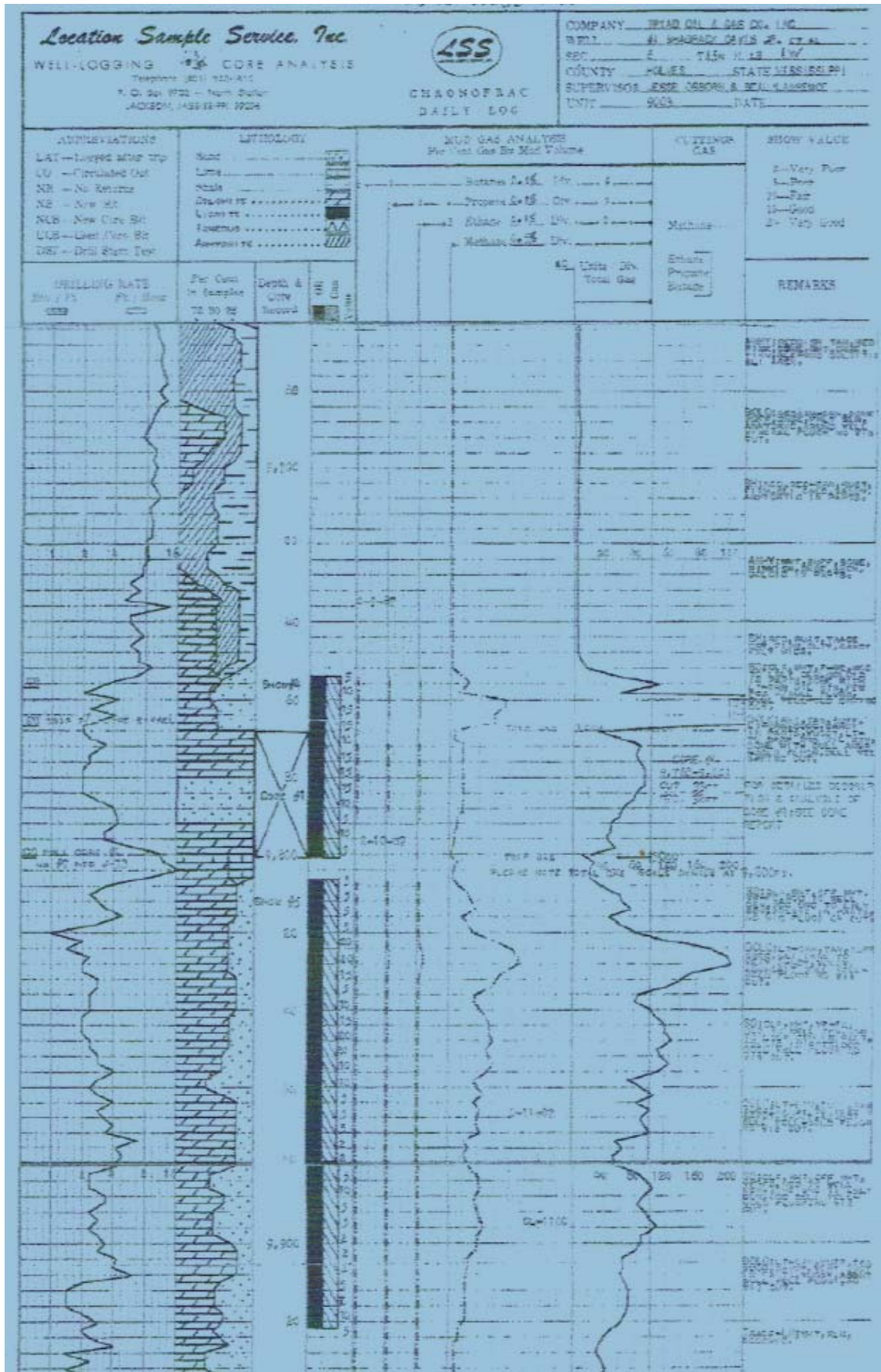
Density/Neutron





PAST & PRESENT PROSPECTS

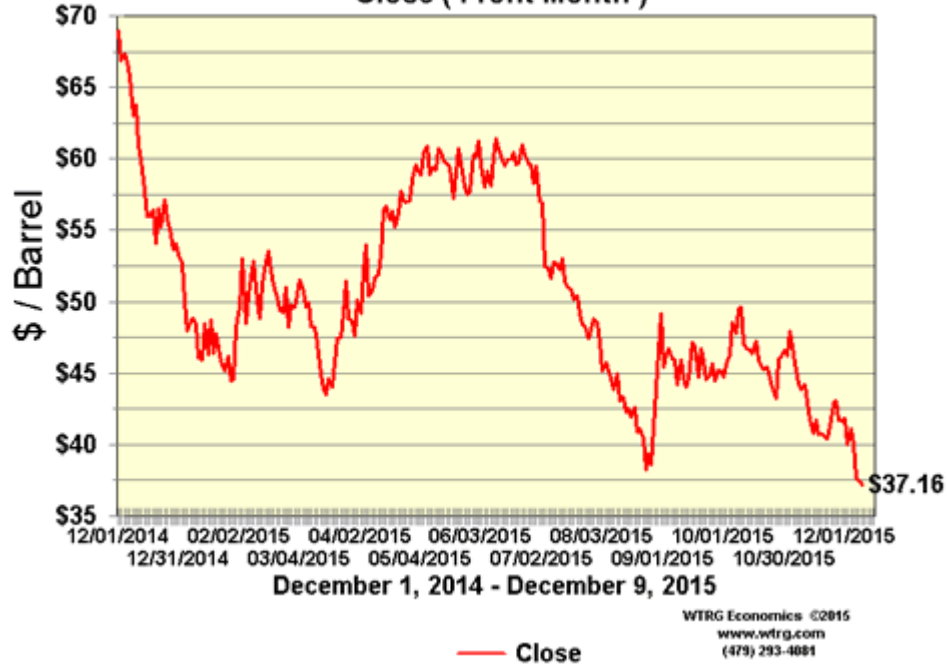
Tchula Lake Prospect



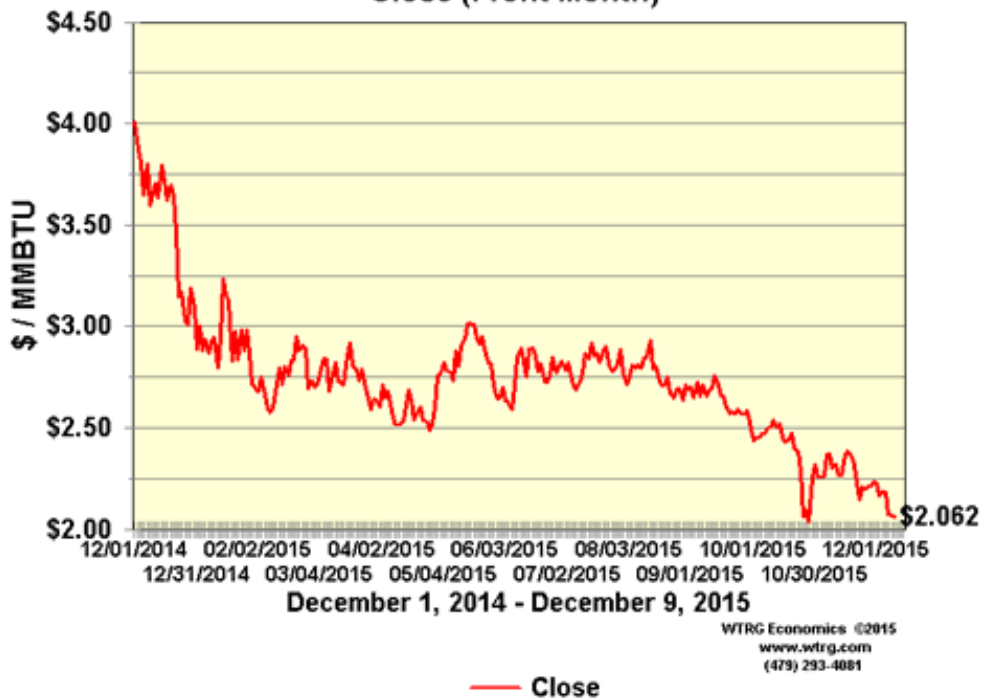


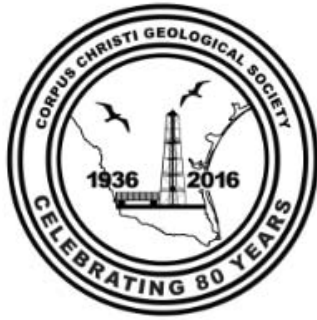
CURRENT PRICES

NYMEX Crude Oil Futures
Close (Front Month)



NYMEX Natural Gas Futures
Close (Front Month)





CALL FOR PAPERS

66th GCAGS Convention
September 17-20, 2016
American Bank Center
Bayfront Convention Hall
Corpus Christi, Texas



We're Building Sessions in these Themes

- The Gulf of Mexico Systems
- Conventional Carbonates & Clastics
- Tight Gas Plays
- Understanding the Resource Plays
- The Changing Coastal Landscape
- Mexico and Latin America
- Advances in Geophysical Technologies
- Enhanced and Secondary Recovery
- Reservoir Prediction and Quality
- Climate from Multiple Perspectives
- Protecting and Stewarding Water Resources
- Other Sessions Developed from Submissions

And We're Planning Field Trips & Short Courses, Too.

Want to Help? Have Ideas? Need Information? Contact Dawn Bissell, Convention Chairman, chair@gcags2016.com

Join the 2016 GCAGS Convention with an Oral or Poster presentation!

Please submit a 250-word abstract or summary of your planned paper or poster before **December 15, 2015** to our Technical Program Chairs, **Bob Critchlow** or **Rick Paige** at techprogramchair@gcags2016.com. Authors of accepted papers and posters will be notified **late January 2016**. Final extended abstracts, with or without figures, and full papers for publication in the *GCAGS Transactions* will be due by **March 21, 2016** to the *GCAGS Transactions* Editor, **Jennifer Smith-Engle**. Full information, instructions, size limitations, and helpful hints for abstracts, summaries, extended abstracts, and full papers can be found on

www.gcags2016.com

Thank you for your participation!

If you'd like to publish in the *GCAGS Journal* -

The Peer-Reviewed Journal of Gulf Coast Geoscience

Submit an extended abstract of at least 600 words, including 1-2 representative figures, to the *GCAGS Journal* Editor, **Barry Katz** at barrykatz@chevron.com by **December 15, 2015**. Once accepted for publication, a full manuscript should be submitted before **March 21, 2016**. Full instructions for manuscript submissions will be posted online at **www.gcags2016.com**

Convention presentations of Journal submissions are encouraged, but not required.



MONTHLY POST

Dr. David T. Dockery III RPG

LIVING FOSSILS

David T. Dockery III, Office of Geology

When most people think of a living fossil, they image a dinosaur being discovered in the jungles of Africa, such as was portrayed in Sir Alfred Conan Doyle's 1912 novel *The Lost World*, or such as the real discovery of the primitive hollow-spine fish called the coelacanth, a fish though extinct at the end of the Cretaceous Period some 70 million years ago (Figure 1) but found alive by fishermen in 1938 off the coast of South Africa (Figure 2).



Figure 1. Partial pterygoquadrate (back side of skull) of the giant coelacanth *Megalocoelacanthus dobiei* from the Tombigbee Sand at the Aimcor Bentonite Mine at Aberdeen, Mississippi (MMNS specimen VP-390); exterior side at left and interior side, with tiny tubercle-like teeth (a distinctive coelacanth feature), at right. Picture (digital; Image 1520) taken on August 10, 2010. Specimen referenced in Manning, 2006 (dissertation), p. 266.

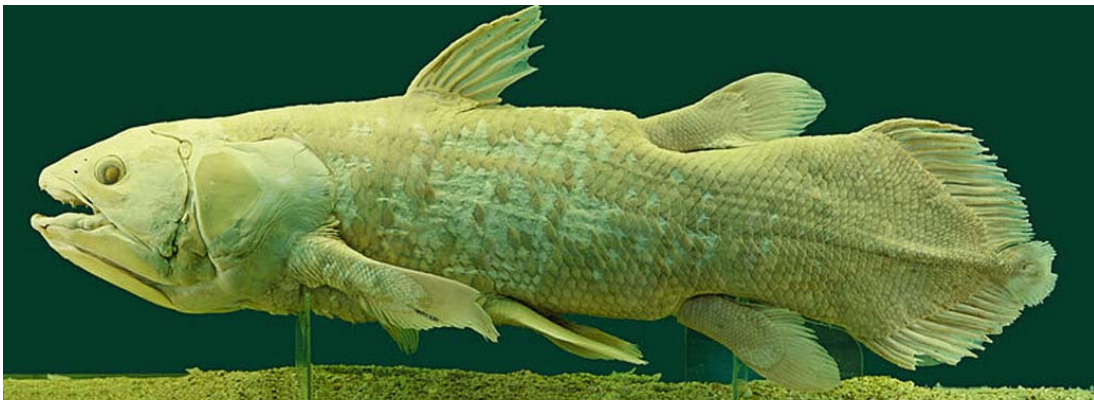


Figure 2. A preserved coelacanth, *Latimeria chalumnae*, from the West Indian Ocean, caught on October 18, 1974, next to Salimani/Selimani (Grand Comoro, Comoro Islands), in the Natural History Museum, Vienna, Austria.



MONTHLY POST

Dr. David T. Dockery III RPG

A recent living-fossil discovery was published in the April 2011 issue of *Environmental News* under the title “The Shell from Mars.” The new shell find was a living species of the marine snail *Sphaerocypraea* and was named *Sphaerocypraea incomparabilis*. *Sphaerocypraea* was thought to have been extinct since the end of the Miocene Epoch some 10 million years ago until the new species was dredged up by a Russian trawler at a depth of 100 meters in the Red Sea and obtained from a Somalia fisherman. The shell was sold to a shell dealer, bought by a collector, donated to the American Museum of Natural History in New York, stolen from the museum, sold to an Indonesian shell collector for \$20,000, investigated by federal agents, and eventually recovered and returned to the American Museum of Natural History. Both the coelacanth and *Sphaerocypraea* have something in common; they once had a worldwide distribution in shallow tropical ocean waters, but are now rare and isolated in deep-water tropical environments. Thus, the living-fossil species have avoided detection until recent times.

Now newly discovered living fossils have emerged from deep tropical water (at bathyal depths) of the Indo-Pacific realm from Taiwan to Madagascar and New Zealand that have a Mississippi connection. These new species belong to the Family Pyramitridae, a family named by Cossmann in 1901 to include the fossil marine snail genus *Pyramimitra* Conrad, 1965, of the U.S. Gulf Coast Eocene. This genus has weak columellar plications and superficially resembles members of the families Mitridae and Buccinoidea. It contains only two species of certain placement, *Pyramimitra terebraeformis* (Conrad, 1848) from the Gosport Sand of Alabama (Figure 3, B & C) and *Pyramimitra quadralirata* Dockery, 1977, from the Moodys Branch Formation of Jackson, Mississippi (Figure 3, D & E; Figure 4). Because of fossil collecting trips to Mississippi by Luc Dolin of (at the time) St. Dennis, France, specimens of *Pyramimitra quadralirata* were available for study in Paris (Figure 4).

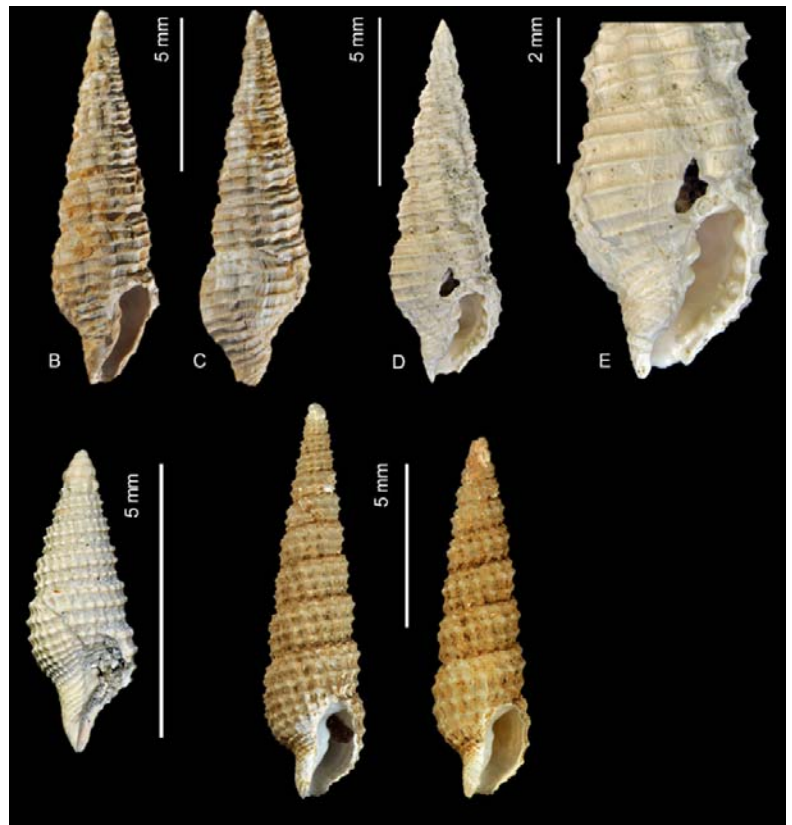


Figure 3. Top: B-C *Pyramimitra terebraeformis* (Conrad, 1848), D-E *Pyramimitra quadralirata* Dockery, 1977. Bottom: Left, *Teremitra? hortensis* (Vinassa de Regny, 1898), Upper Eocene, France, Center, *Teremitra fallax* n. sp., Solomon islands, *Teremitra efatensis* (Aubry, 1999), Vanuatu. Pictures from Figure 2 of Kantor, Lozouet, Puillandre, and Bouchet, 2014, *Zootaxa* 3754 (3): pages 239-276.



MONTHLY POST

Dr. David T. Dockery III RPG

Other fossil genera in the Family Pyramimitridae include *Endiatoma* Cossmann, 1896, from the Eocene of the Paris Basin in France, *Vaughanites* Woodring, 1928, from the Miocene of Jamaica, and *Hortia* Lozouet, 1999, from the Eocene and Oligocene of France. *Teremitra* is a new genus named by Kantor, Lozouet, Puillandre, and Bouchet (2014) for living members of the Pyramimitridae found in the Indo-Pacific realm and one possible fossil example from the Upper Eocene of France (Figure 3, bottom left). In all, Kantor et al. (2014) placed living members of this family from the Indo-Pacific realm in three genera and nine species.

Pyramimitridae is a member of the gastropods order Neogastropoda, the most prolific order of gastropods since Cretaceous times, containing some 12,000 species. Bouchet and Rocroi (2005) placed some 102 nominal families of fossil neogastropods in the synonymy of 39 accepted Recent families. One of those families was the Pyramimitidae, which was placed in the synonymy of the Buccinidae (Ponder and Warén, 1988, and Bouchet and Rocroi, 2005). The Pyramimitridae would probably have remained lost in synonymy if not for several new species in the deep water off New Caledonia that resembled the genus *Hortia* Lozouet, 1999, a genus that was originally attributed to the Conoidea. The radulae (teeth) of the new species, along with their molecular biology, as published by Kantor, Lozouet, Puillandre, and Bouchet (2014), revealed that they were neither Conoidea nor any other recognized Recent neogastropod family. Based on the soft body anatomy of the Recent species, Pyramimitridae is now the 40th Neogastropod family.

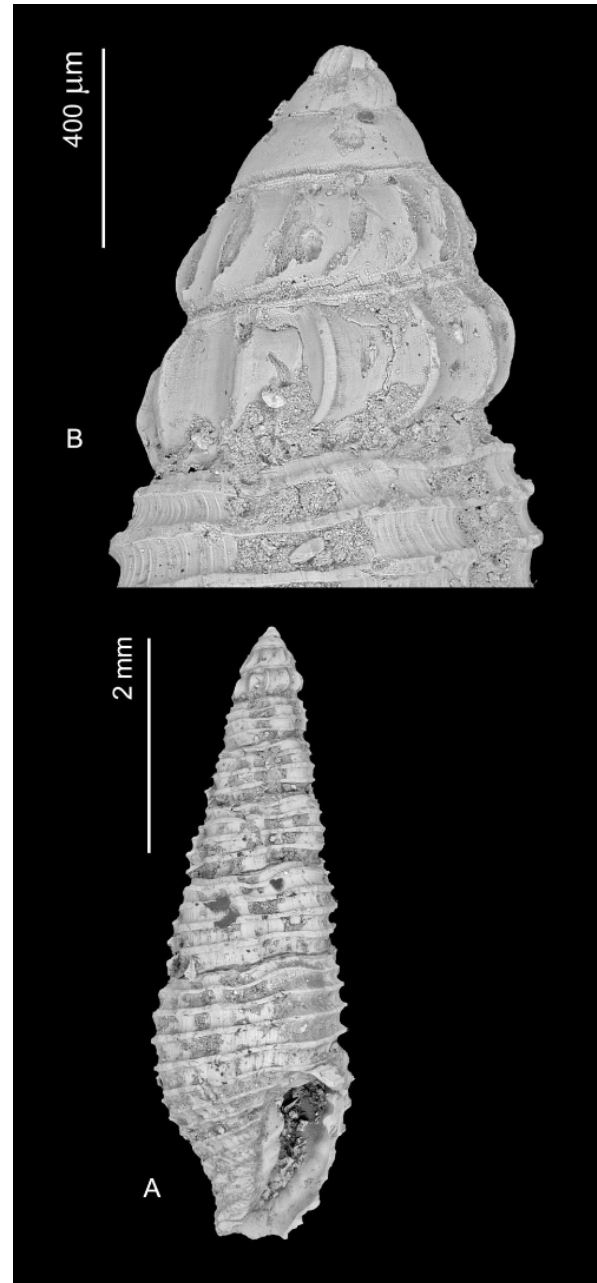


Figure 4. *Pyramimitra quadralirata* Dockery, 1977, Moodys Branch Formation, Jackson, Mississippi. From Figure 3 of Kantor et al., 2014.



MONTHLY POST

Dr. David T. Dockery III RPG

Figure 5 is a cladogram (a Bayesian phylogenetic tree) obtained from molecular genetics, which places Pyramimitridae between the Superfamilies Cancellaroidea (containing the Cancellariidae at top) and Conoidea without a sister group.

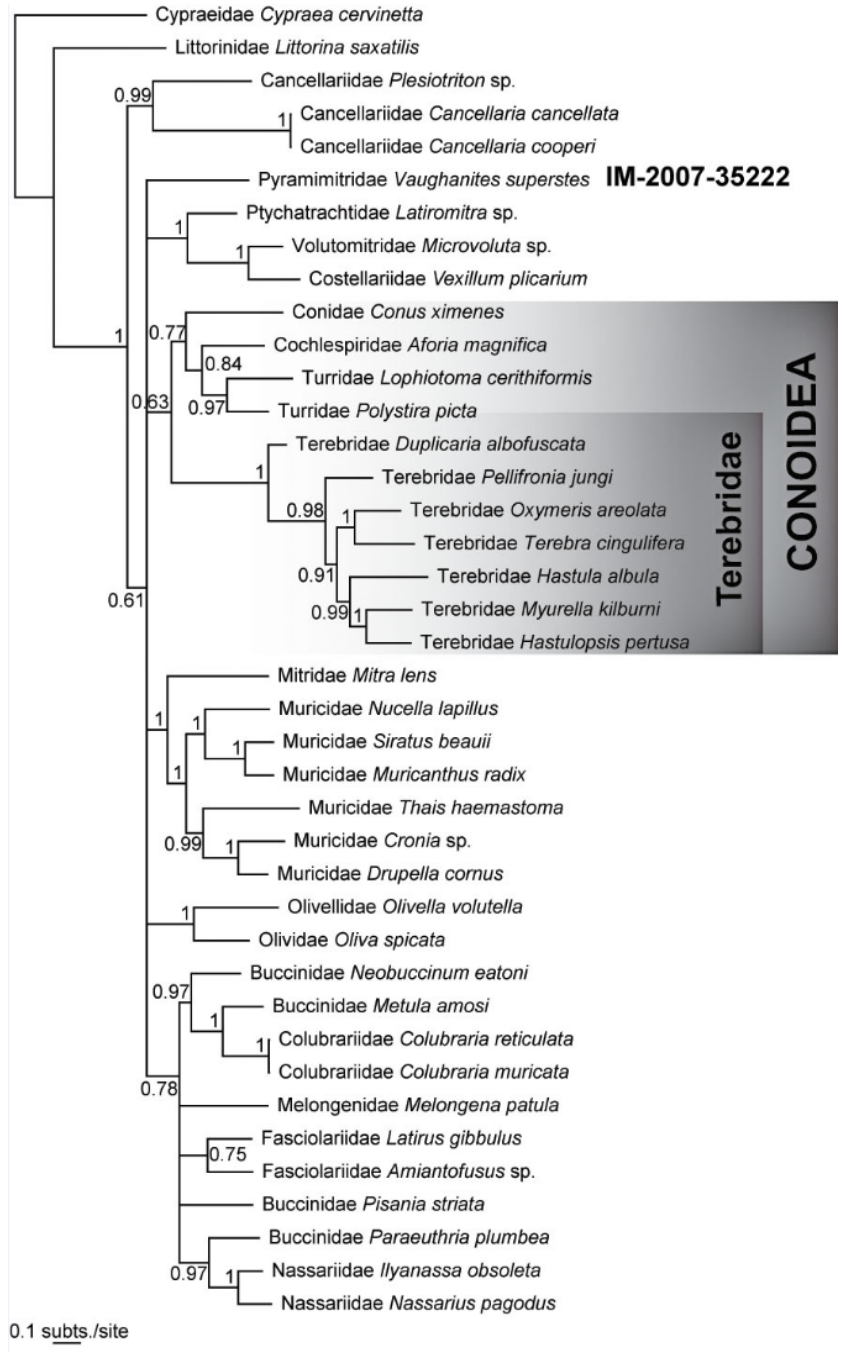


Figure 5. Cladogram, Bayesian phylogenetic tree obtained with the COI, 12S, 16S, and 28S genes. Posterior probabilities are shown at nodes. From Kantor, Lozouet, Puillandre, and Bouchet, 2014, Lost and found: The Eocene family Pyramimitridae (Neogastropoda) discovered in the Recent fauna of the Indo-Pacific: *Zootaxa*, 3754 (3), p. 242.



MONTHLY DRILLING REPORT

Mississippi & Alabama

DRILLING WELLS & LOCATIONS

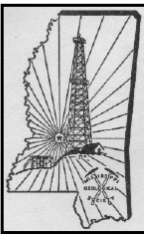
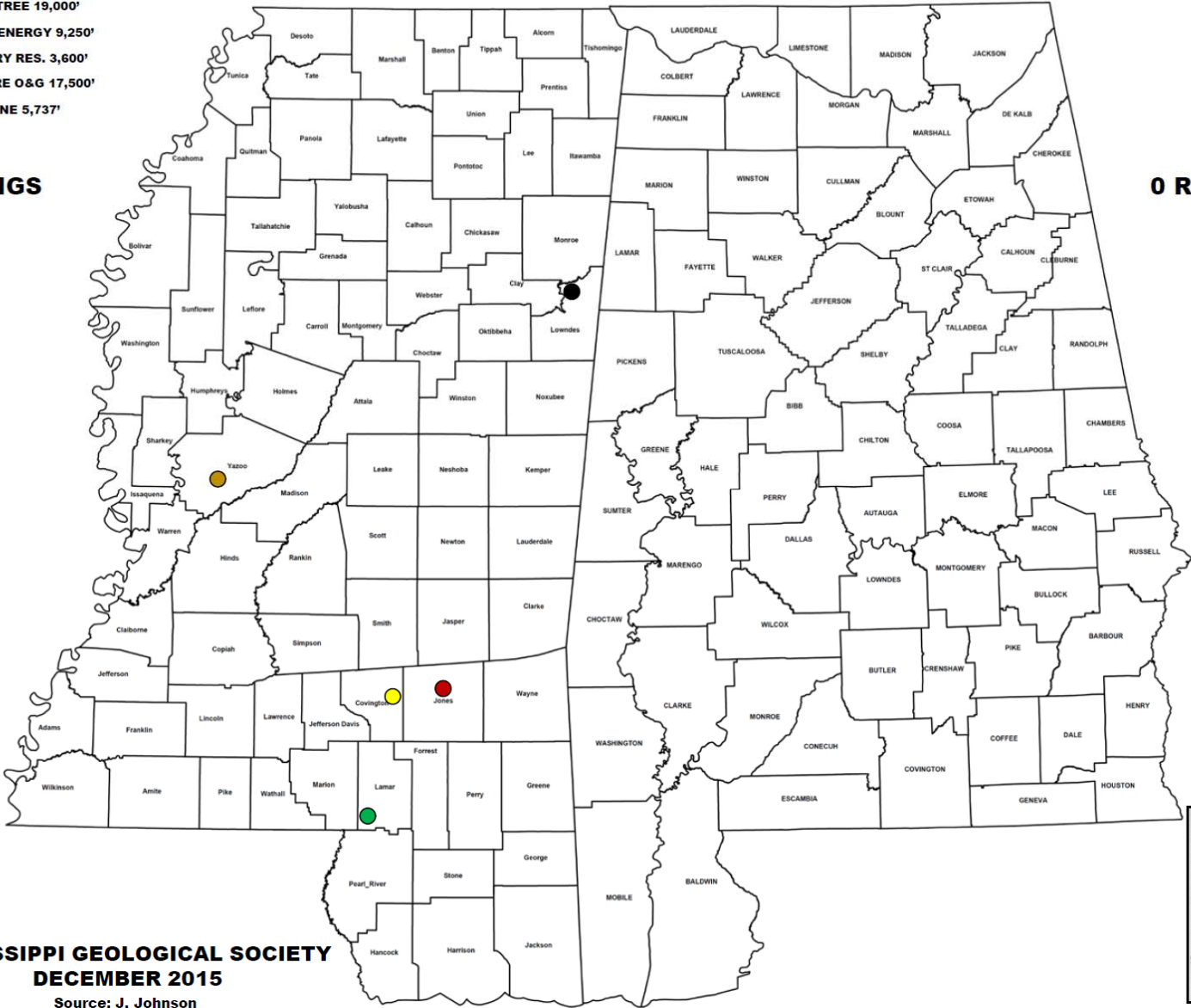
MISSISSIPPI

- **ROUNDTREE 19,000'**
- **LAMAR ENERGY 9,250'**
- **DENBURY RES. 3,600'**
- **VENTURE O&G 17,500'**
- **GULF PINE 5,737'**

5 RIGS

ALABAMA

0 RIGS



**MISSISSIPPI GEOLOGICAL SOCIETY
DECEMBER 2015**
Source: J. Johnson

Rotary Rig Count
12/4/2015



| Location | Week | +/- | Week Ago | +/- | Year Ago |
|------------------------------------|------------------|------------|------------------|--------------|-----------------|
| Land | 710 | -3 | 713 | -1138 | 1848 |
| Inland Waters | 2 | 1 | 1 | -12 | 14 |
| Offshore | 25 | -5 | 30 | -33 | 58 |
| United States Total | 737 | -7 | 744 | -1183 | 1920 |
| Gulf Of Mexico | 25 | -5 | 30 | -31 | 56 |
| Canada | 177 | -7 | 184 | -245 | 422 |
| North America | 914 | -14 | 928 | -1428 | 2342 |
| U.S. Breakout Information | This Week | +/- | Last Week | +/- | Year Ago |
| Oil | 545 | -10 | 555 | -1030 | 1575 |
| Gas | 192 | 3 | 189 | -152 | 344 |
| Miscellaneous | 0 | 0 | 0 | -1 | 1 |
| Directional | 64 | -2 | 66 | -134 | 198 |
| Horizontal | 569 | 0 | 569 | -799 | 1368 |
| Vertical | 104 | -5 | 109 | -250 | 354 |
| Canada Breakout Information | This Week | +/- | Last Week | +/- | Year Ago |
| Oil | 77 | -4 | 81 | -135 | 212 |
| Gas | 100 | -3 | 103 | -110 | 210 |
| Miscellaneous | 0 | 0 | 0 | 0 | 0 |
| Major State Variances | This Week | +/- | Last Week | +/- | Year Ago |
| Alaska | 12 | 0 | 12 | 1 | 11 |
| Arkansas | 4 | 0 | 4 | -8 | 12 |
| California | 9 | 0 | 9 | -34 | 43 |
| Colorado | 27 | -1 | 28 | -43 | 70 |
| Kansas | 10 | 0 | 10 | -16 | 26 |
| Louisiana | 60 | -4 | 64 | -54 | 114 |
| New Mexico | 40 | 0 | 40 | -60 | 100 |
| North Dakota | 60 | -2 | 62 | -120 | 180 |
| Ohio | 19 | 0 | 19 | -26 | 45 |
| Oklahoma | 84 | 2 | 82 | -127 | 211 |
| Pennsylvania | 29 | 0 | 29 | -26 | 55 |
| Texas | 333 | -3 | 336 | -563 | 896 |
| Utah | 4 | -1 | 5 | -19 | 23 |
| West Virginia | 14 | 0 | 14 | -17 | 31 |
| Wyoming | 22 | 2 | 20 | -37 | 59 |
| Major Basin Variances | This Week | +/- | Last Week | +/- | Year Ago |
| Ardmore Woodford | 2 | 0 | 2 | -5 | 7 |
| Arkoma Woodford | 9 | 0 | 9 | 4 | 5 |
| Barnett | 7 | 0 | 7 | -17 | 24 |
| Cana Woodford | 35 | 1 | 34 | -8 | 43 |
| DJ-Niobrara | 25 | -1 | 26 | -36 | 61 |
| Eagle Ford | 73 | 0 | 73 | -133 | 206 |
| Fayetteville | 4 | 0 | 4 | -5 | 9 |
| Granite Wash | 13 | 1 | 12 | -50 | 63 |
| Haynesville | 28 | 0 | 28 | -12 | 40 |
| Marcellus | 42 | 0 | 42 | -40 | 82 |
| Mississippian | 12 | 0 | 12 | -62 | 74 |
| Permian | 217 | -4 | 221 | -351 | 568 |
| Utica | 20 | 0 | 20 | -28 | 48 |
| Williston | 60 | -2 | 62 | -129 | 189 |



BOLAND SCHOLARSHIP WATCH

Faculty & Students,

This is a new year and the Mississippi Geological Society along with the Boland Scholarship Fund would like to remind you that we want to honor the most outstanding overall students for the 2015-2016 year.

Each year, the Boland Scholarship awards 1 student from each institution a check that rewards students for their hard work and dedication to the Geosciences and their community.

We look forward to a great year and hope to see you at our monthly meetings.

Best Regards,

Matt Caton
Editor



THE UNIVERSITY OF
SOUTHERN
MISSISSIPPI

MILLSAPS
COLLEGE



BOLAND SCHOLARSHIP CONTRIBUTIONS

Thank you for your generous
contributions to the Boland Scholarship
Fund

I. Meade Hufford

Alvin Byrd

Maurice Birdwell

Joe White

Tom McMillan

Chris Franks

Geodigital Consulting, LLC

Rick Ericksen

Joseph & Melinda Boland

William & Liz Boland

Dave Cate



GEOLOGY POST

ARTICLES, PAPERS or NEWS?

ATTENTION!!!!!! Industry, Professors and Students:

I am adding a dedicated section that includes more content from the industry and our schools.

Submissions can include anything from professional papers, thesis abstracts, job opportunities to pictures. Anything!!!!

If you have any information or news you would like to share with the Society **PLEASE** email them to the MGS Editor at:

mcaton@tellusoperating.com

Thanks & Regards,

Matt Caton
Editor

GEO LINK POST

USGS TAPESTRY OF TIME AND TERRAIN <http://tapestry.usgs.gov> The CCGS is donating to all of the 5th and 6th grade schools in the Coastal Bend. Check it out—it is a spectacular map. You might want a framed one for your own office. The one in my office has glass and a metal frame, and it cost \$400 and it does not look as good as the ones we are giving to the schools. Call Owen 510-6224 if you want one for your office for \$150. Duncan, Mike, Chris, Dave, Bob Randy, Seb., Kevin, Ken, Craig, Patrick, Robert.

FREE TEXAS TOPO'S <http://www.tnris.state.tx.us/digital.htm> these are TIFF files from your state government that can be downloaded and printed. You can add them to SMT by converting them first in Globalmapper. Other digital data as well.

FREE NATIONAL TOPO'S [http://store.usgs.gov/b2c_usgs/b2c/start/\(xcm=r3standardpitrex_prd\)/.do](http://store.usgs.gov/b2c_usgs/b2c/start/(xcm=r3standardpitrex_prd)/.do) go to this webpage and look on the extreme right side to the box titled TOPO MAPS DOWNLOAD TOPO MAPS FREE.

<http://www.geographynetwork.com/> Go here and try their top 5 map services. My favorite is 'USGS Elevation Date.' Zoom in on your favorite places and see great shaded relief images. One of my favorites is the Great Sand Dunes National Park in south central Colorado. Nice Dunes.

<http://antwrp.gsfc.nasa.gov/apod/astropix.html> Astronomy picture of the day — awesome. I click this page everyday.

<http://www.spacimaging.com/gallery/ioweek/iow.htm> Amazing satellite images. Check out the gallery.

<http://www.ngdc.noaa.gov/seg/topo/globegal.shtml> More great maps to share with kids and students.

www.geo.org Don't forget we have our own web page.

<http://micro.magneet.fsu.edu/primer/java/scienceoptiscu/owersof10/>

<http://asterweb.jpl.nasa.gov/galery/default.htm> Great satellite images of volcanoes

<http://terra.nasa.gov/gallery/> More here

www.ermapper.com They have a great free downloadable viewer for TIFF and other graphic files called ER Viewer.

www.drillinginfo.com This is an incredible (subscription) well and completion data service for independents. Can be demo'ed for free.

<http://terrasrver.com/> Go here to download free aerial photo images that can be plotted under your digital land and well data. Images down to 1 meter resolution, searchable by Lat Long coordinate. Useful for resolving well location questions.

<http://www.fs.fed.us/gpnf/volcanocams/msh/> This is a live cam of Mt. St. Helens refreshed every 5 minutes. At the bottom are old videos of past eruptions in this cycle. It is worth a watch especially now.



MGS HONORARY MEMBERS

Esther Applin*

Verne Culbertson *

David C. Harrell*

Dudley J. Hughes*

Walter P. Jones*

Winnie McGlammery*

Maurice E. Miesse*

Marvin E. Norman*

Thurston Connell Rader*

Henry Toler*

Charles H. Williams

David Cate

Paul Applin*

H. Leroy Francis*

Oleta R. Harrell*

Urban B. Hughes*

Harold Karges*

Thomas McGlothin*

Emil Monsour*

Marvin L. Oxley*

Baxter Smith*

H. Vaughn Watkins

Jerry Zoble

Stanley King

Lawrence F. Boland*

Jim Furrh*

Ralph Hines

Wendell B. Johnson *

Wilbur H. Knight*

Frederic F. Mellen*

William H. Moore*

Richard R. Priddy*

Harry V. Spooner

Stewart W. Welch*

Julius Ridgeway

*** deceased**

MEMBERSHIP APPLICATION / RENEWAL FORM

MISSISSIPPI GEOLOGICAL SOCIETY

P.O. BOX 422, JACKSON, MISSISSIPPI 39205-0422

2015-2016

Membership year is June through May

New Membership (\$20/yr)_____ Renewal (\$20/yr)_____ Student (FREE)_____ Associate (\$20/yr)_____

Boland Scholarship Fund Donation \$_____ Total Amount Enclosed \$_____

Last Name:_____ First:_____ MI:_____

Mailing Address:_____

Office Phone:_____ Home Phone:_____ FAX:_____

E-mail Address: _____

College/University Attended: _____

Degree(s) Obtained and Year(s) Awarded: _____

Professional Associations, Certifications, & Licenses: _____



2015-2016 MGS MEMBERS

Ken Adams
Bill Bagnall
Larry Baria
Neil Barnes
Tiffany Berry
Maurice Birdwell
Alvin Bird
Dawn Bissell
Randy Bissell
Michael Bograd
Chris Bowen
Keith Bowman
Robert Branson
Terry Bryant
J. C. Carlisle
Dave Cate
Matt Caton
Kayla Calhoun
Charles Coney
Phil Cook
Robert Craft
Jamie Crawford
Andrew Cummings
David Dockery
Rick Ericksen
Jo Everett
Jim Files
Edward Flynt
Chris Franks
Stan Galicki
Bob Gaston
Tom Giosa
Danny Harrelson
Jamie Harris
Frank Heitmuller

Dan Herlihy
Robert Herr
David Higgenbotham
Paige Hilburn
David Hilton
Ralph Hines
Todd Hines
Johnny Holifield
Ed Hollingsworth
I. Meade Hufford
Kevin Jeffreys
Lars Johnson
Joe Johnson
Fred Katzenmeyer
Karl Kaufmann
Emilie Kelly
Stanley King
Brenda Kirkland
Cragin Knox
James Landrem
Jonathan Leard
Cody Lenert
Howard Lowery
Joe Lott
Joe McDuff
Tom McMillan
Drew Mills
Jim Michael
Jonney Mitchell
Jack Moody
Charlie Morrison
Asa Mullenaxx
Jess New
James Nix
James Norris

Aleksandra Novak
Charles Peel
Jim Rawls
Philip Reeves
Armando Ricci
Julius Ridgeway
Darrel Schmitz
Bob Schneeflock
Thomas Seitz
George Self
Jacob Sharp
Jeremi Simmons
Chales Smith
Harry Spooner
Lindsay Stewart
John Sullivan
Andy Sylte
Tom Sylte
Mike Taylor
Sid Thompson
Stan Theiling
Janet Verret
Watts Ueltschey
Wayne Upchurch
Steve Walkinshaw
Vaughn Watkins
Jeremy Weremelchik
Robert Weyman
Joe White
Charlie Williams
Mark Wyatt
Jerry Zoble

This list is updated monthly. Please contact Bill Bagnall if you have questions.

MGS ADVERTISING ORDER FORM

September 2015 – May 2016

I. Bulletin Advertisements:

| <u>Size</u> | <u>Rate/Year</u> | <u>Amt. Remitted</u> |
|----------------------------------|------------------|----------------------|
| Full Page Ad (6" x 8") | \$500 | \$ _____ |
| 1/2 Page Ad (6" x 4") | \$300 | \$ _____ |
| 1/4 Page Ad (3" x 4") | \$200 | \$ _____ |
| Business Card Ad (1 1/2" x 3") | \$100 | \$ _____ |
| Professional Listing (1/2" x 3") | \$ 50 | \$ _____ |

II. Web Page Advertisements (www.missgeo.com):

| <u>Type of Web Page Ad</u> | <u>Rate/Year</u> | <u>Amt. Remitted</u> |
|--|------------------|----------------------|
| Front Page Sponsor (Banner Ad – limit of 5) | \$500 | \$ _____ |
| Second Page Banner Ad | \$250 | \$ _____ |
| Professional Listing/Link | \$100 | \$ _____ |

(Note: Please contact Steve Walkinshaw at (601) 607-3227 or mail@visionexploration.com for details concerning placing your ad on the MGS web site.)

Total Remitted \$ _____

Please make checks payable to the Mississippi Geological Society. If you have any questions, contact Matt Caton at (601) 898-7444 or mcaton@tellusoperating.com

Howard Lowery
Account Representative



Accurate Data, Reliable Solutions

800.256.1147

601.441.9857

www.stratagraph.com

hlowery@stratagraph.com

P.O. Box 53848
Lafayette, LA 70505

Joseph H. McDuff
Geologist



351 Chapel Loop
Mandeville, LA 70471
985.845.9430

jhmcduff@charter.net

VALIOSO
PETROLEUM CO., INC.



KARL J KAUFMANN

504 KEYWOOD CIRCLE PHONE: 601-936-3601
SUITE A CELL: 601-209-0948
FLOWOOD, MS 39232 VALIOSO@BELLSOUTH.NET

Joe R. White, Jr.
Petroleum Geologist

400 Travis St., Ste. 909
Shreveport, LA 71101
Ofc. 318-703-2311
Cell. 318-423-9828
Hm. 318-949-3539

AAPG CPG #5580
MS RPG #0097
LA RPG (SUBMITTED)
Jwhite1362@aol.com
Joerjrw@gmail.com

Baldwin Madden Energy, LLC
Oil and Gas Acquisitions and Development

Christopher D. Franks
Senior Geologist

333 Texas Street, Suite 1919
Shreveport, Louisiana 71101-3666
318-429-2204 / 318-429-2229 (fax)
chris.franks@BaldwinMadden.com

Energy Land Services
Oil & Gas Leases

I. Meade Hufford, CPL
Owner

P. O. Box 302
144 Wharton Grove Ln
Weems, VA 22576

Phone: 804-438-5852
Fax: 804-438-9043
Cell: 713-705-7235
hufford1913@aol.com



MGS PAST PRESIDENTS

| | | | |
|-----------|-----------------------|------------|----------------------------|
| 1939-1940 | Henry N. Toler | 1973-1974 | Larry Walter |
| 1940-1941 | Urban B. Hughes | 1974-1975 | W. E. "Gene" Taylor |
| 1941-1942 | J. Tom McGlothlin | 1975-1976 | Jerry E. Zoble |
| 1942-1943 | Dave C. Harrell | 1976-1977 | P. David Cate |
| 1943-1944 | K. K. "Bob" Spooner | 1977-1978 | Sarah Childress |
| 1944-1945 | L. R. McFarland | 1978-1979 | Les Aultman |
| 1945-1946 | J. B. Story | 1979-1980 | Philip R. Reeves |
| 1946-1947 | Frederic F. Mellen | 1980-1981 | Marshall Kern |
| 1947-1948 | H. Lee Spyres | 1981-1982 | Stephen Oivanki |
| | Robert D. Sprague | 1982- 1983 | James W. "Buddy" Twiner |
| 1948-1949 | Robert D. Sprague | 1983- 1984 | Charles H. Williams |
| 1949-1950 | E. T. "'Mike" Monsour | 1984- 1985 | C. Kip Ferns |
| 1950-1951 | J. Tate Clark | 1985-1986 | Steven S. Walkinshaw |
| | Charles E. Buck | 1986-1987 | J. R. "'Bob" White |
| 1951-1952 | George W. Field | 1987-1988 | Harry Spooner |
| 1952-1953 | James L. Md11in, Jr. | 1988-1989 | Stanley King |
| 1953-1954 | Wilbur H. Knight | 1989-1990 | Stan Galicki |
| 1954-1955 | A. Ed Blanton | 1990-1991 | E. James Files, Jr. |
| 1955-1956 | Gilbert A. Talley | 1991-1992 | Stephen L. Ingram, Sr. |
| 1956-1957 | Ben Ploch | 1992-1993 | Michael Noone/Stanley King |
| 1957-1958 | Emil Monsour | 1993-1994 | Brian Sims |
| 1958-1959 | Charles Brown | 1994-1995 | C. W. "Neil" Barnes |
| 1959-1960 | M. F. Kirby | 1995-1996 | Lester Aultman |
| 1960-1961 | Rudy Ewing | 1996-1997 | Jack S. Moody |
| 1961-1962 | Xavier M. Franscogna | 1997-1998 | George B. Vockroth |
| 1962-1963 | Robert B. Ross | 1998-1999 | Rick L. Ericksen |
| 1963-1964 | William A. Skees | 1999-2000 | Stanley King |
| | Marvin Oxley | 2000-2001 | John C. Marble |
| 1964-1965 | James F. Bollman | 2001-2002 | Andrew T. Sylte |
| 1965-1966 | Sankey L. Blanton | 2002-2003 | Aaron Lasker |
| 1966-1967 | Alan Jackson | 2003-2004 | John G. Cox |
| 1967-1968 | Julius M. Ridgway | 2004-2005 | James E. Starnes |
| 1968-1969 | Edward D. Minihan | 2005-2006 | Todd Hines |
| 1969-1970 | Kevin E. Cahill | 2006-2007 | Bob Schneeflock |
| 1970-1971 | John Lancaster | 2007-2008 | Tony Stuart |
| 1971-1972 | Larry Boland | 2008-2009 | Lisa Ivshin |
| 1972-1973 | Charles Barton | 2009-2010 | Joe Johnson |
| | | 2010-2011 | Brian Sims |
| | | 2011-2012 | Stanley King |
| | | 2012-2013 | Jim Files |
| | | 2013-2014 | Neil Barnes |
| | | 2014-2015 | Ezat Heydari |