

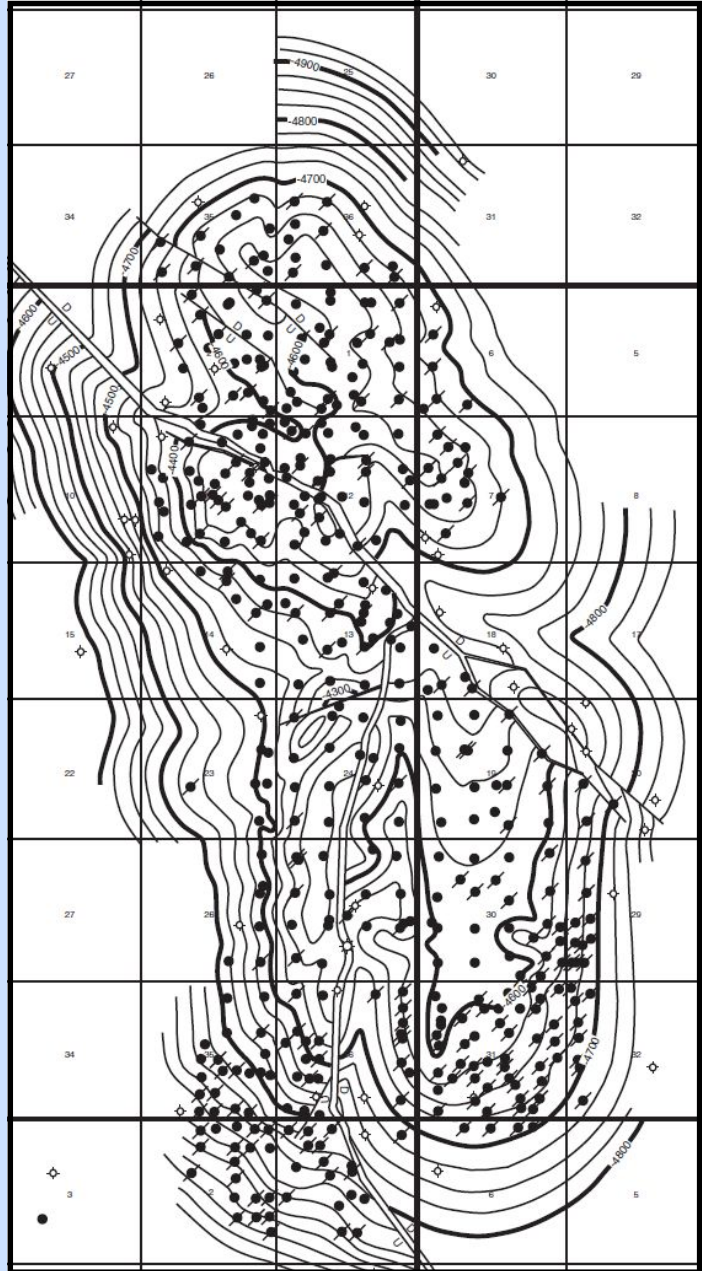
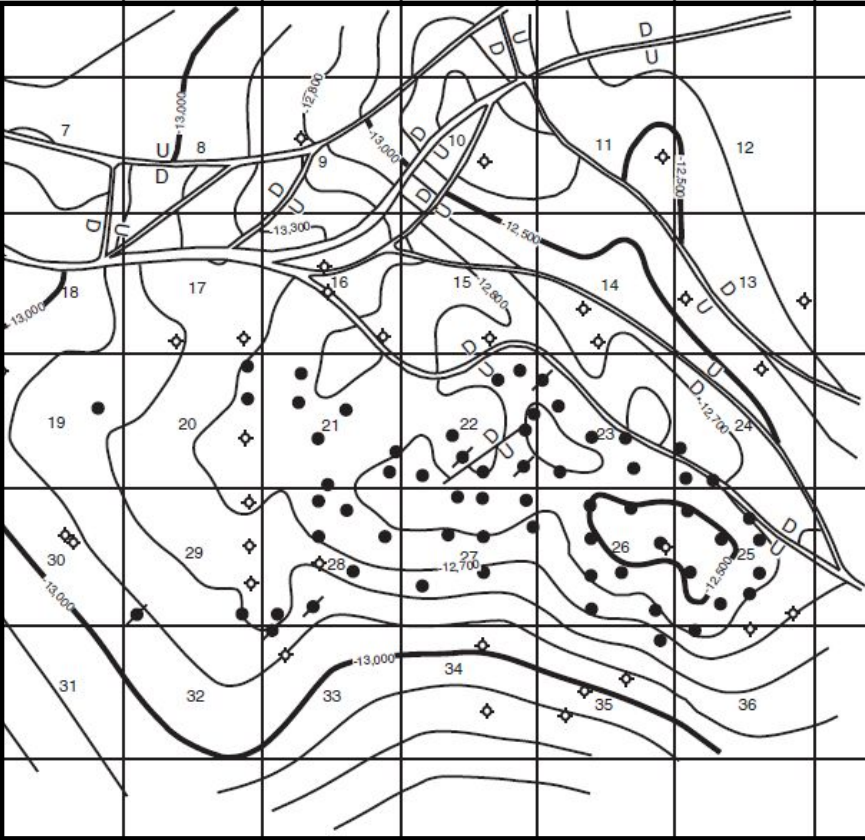


eBULLETIN

Volume 63

No. 4

December 2014



MAPL CHRISTMAS PARTY

GEOLOGIC MAPPING AND ENERGY RESOURCES

JOB OPPORTUNITIES

FALLING OIL PRICES





MGS 2014-2015 BOARD OF DIRECTORS

Officers

President	Ezat Heydari	Jackson State	j00103248@jsums.edu	(601) 979-4230
1st Vice President	Jack Moody	Independent		
2nd Vice President	Joe Johnson	Spooner	jjohnson@spoonercompanies.com	(601) 898-7444
Treasurer	Bill Bagnall	BLM	wbagnall@blm.gov	(601)-977-5417
Webmaster	Steve Walkinshaw	Vision Exploration	steve@visionexploration.com	(601) 607-3227
Advertising	Matt Caton	Tellus Operating	mcaton@tellusoperating.com	(601) 898-7444
Editor	Matt Caton	Tellus Operating	mcaton@tellusoperating.com	(601) 898-7444

Boland Scholarship

President	Jack Moody	Independent		
Secretary	Dave Cate	Pruet Oil		(601) 948-5279
Members	Joe Johnson	Spooner		
	Tony Stuart	Venture Oil & Gas		(601) 428-7725
	James Starnes	MDEQ		
	Bob Schneeflock	Geodigital Consulting		(601) 853-0701

Honorary Membership

Chairman	Charles H. Williams, Jr. Vaughey & Vaughey		(601) 982-1212
Members	Dudley J. Hughes	Hughes South Corp.	(601) 420-9892
	E. Ralph Hines	Moon-Hines	(601) 572-8300
	Jerry Zoble	Independent	

MGS Representatives

AAPG	Maurice Birdwell	Independent	(601) 936-6939
GCAGS	Danny Harrelson	U.S. Army R&D	(601) 634-2685

Other

Environmental	John Ryan	Allen	(601) 936-4440
Historian	Stanley King	Independent	(601) 842-3539



PRESIDENT'S LETTER

Ezat Heydari



Greetings and Merry Christmas:

A wonderful year is coming to an end and even a better one is just about to start. Christmas is a time for many things, a time for joy, visits with families, to end old hostilities, and form new friendships. It is also a time of re-evaluation of our deeds and decisions.

Let us begin 2015 by working toward improving our common goals including enhancing Geoscience education in the State (formal and informal) and working toward safe guarding of State's geological assets. Any improvements in these two will have an impact on oil and gas exploration and its economical implications.

Something remarking occurred in our November Luncheon. Dr. David Dockery presented our members with two students from Hinds Community College where he teaches Earth Science as an adjunct faculty. Through David's teaching these two students become interested in Geology and plan to pursue their education in this discipline. David is a huge asset to the State of Mississippi. His contribution to the geology of the State is unparalleled. His dedication to improving Geoscience is remarkable. With this act, David made a very clear point: there is a large segment of student population in State's community colleges to connect with.

The State of Mississippi has 17 community colleges. The Hinds Community College alone enrolls about 32,000 students which makes it the largest educational institution in the State. There are fourteen other community colleges including Holmes, Meridian, Copiah-Lincoln, Itawamba, and Pearl River, just name a few.

In addition to David, Dr. Danny Harrellson also teaches Earth Science at the Vicksburg branch of Hinds Community College. Like David, Danny contributes tremendously to Geoscience education in our community colleges. In fact, Laura Matthews, currently a senior student in Earth System Science at Jackson State University, became interested in Earth Science through Dr. Harrellson's teaching. Laura is among the best students I have come across in all of the academic institutions I have been in. I am certain a highly successful career awaits her in Geosciences. I am wondering how many other Laura Matthews are attending our community colleges but unlike Laura do not get exposed to Earth Science?

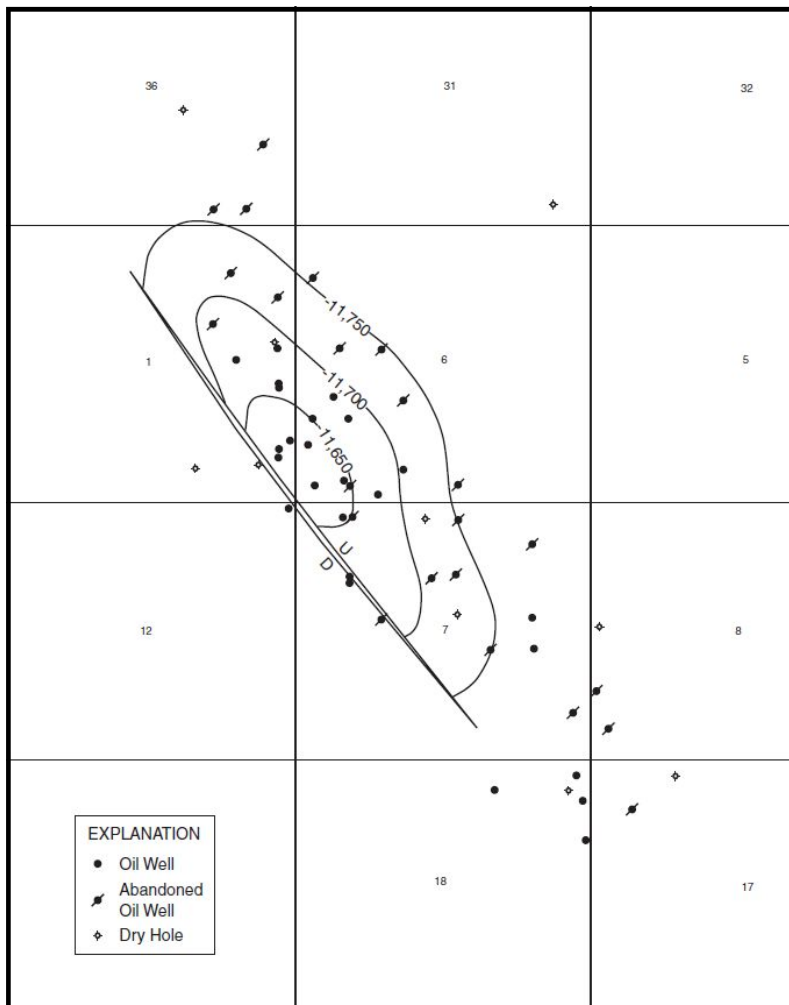
I believe we are at the beginning of the path that Neil Barnes initiated for our Society last year. Let us start the New Year by exploring this path in any ways we can.

Merry Christmas and Happy New Year,

Ezat

2013-2014 MGS MEETING SCHEDULE

When	What/Who	Where
September 11, 2014	Fall BBQ	Jackson Yacht Club-5:30pm
October 9, 2014	John Allen Tuscaloosa Marine Shale	River Hills – 11:30am
November 13, 2014	Carl Fiduk Tectonics and Depositional Episodes of the GOM	River Hills – 11:30am
December 5, 2014	MAPL Christmas Party and Dance	Duling Hall - 7pm
January 8, 2015	TBD	River Hills – 11:30am
February 12, 2015	TBD	River Hills – 11:30am
March 12, 2015	TBD	River Hills – 11:30am
April 9, 2015	Boland Scholarship Awards	River Hills – 11:30am
May 14, 2015	Spring Fling	Jackson Yacht Club– 5:30pm



OFFICERS MEETINGS

September 4, 2014
October 7, 2014
November 11, 2014
January 6, 2015
February 10, 2015
March 10, 2015
April 7, 2015
May 12, 2015



MAPL CHRISTMAS PARTY

Hello MGS Members,

Please come join us at Duling Hall for this year's annual MAPL Christmas Party and Dance. There will be food, drink, door prizes and entertainment provided by The Patrick Harkins Band and Magician, Robert Day.

Your official invitation is below and ticket order forms are on the next page.

Cheers!

Please join us for the

Mississippi Association of Petroleum Landmen Annual Christmas Party and Dance

Saturday, December 6, 2014
7 p.m. until Midnight

Duling Hall in the Historic Fondren Building

Enjoy Food, Libations
and Fabulous Door Prizes!

Hosted By:

Entertainment provided by:
The Patrick Harkins Band
& Magician, Robert Day

Mississippi Association of Petroleum Landmen
Mississippi Geological Society
Mississippi Oil & Gas Lawyers Association
Mississippi Independent Producers & Royalty Owners



MAPL CHRISTMAS PARTY

TICKET ORDER FORM
Corporate Sponsors

Platinum Sponsor - \$1000 _____
 Gold Sponsor - \$750 _____
 Silver Sponsor - \$500 _____
 All Corporate Sponsors will receive 8 tickets and sponsor recognition.

Individual Sponsor Tickets - \$125 _____
 Includes 2 tickets and sponsor recognition.

Individual Tickets - \$35 per person _____

TICKETS WILL NOT BE MAILED, BUT WILL BE AVAILABLE AT THE DOOR THE NIGHT OF THE PARTY.
 Please complete this form and return with your check made payable to:
 MAPL
 P.O. Box 907
 Jackson, MS 39205

TICKET ORDER FORM
Corporate Sponsors

Platinum Sponsor - \$1000 _____
 Gold Sponsor - \$750 _____
 Silver Sponsor - \$500 _____
 All Corporate Sponsors will receive 8 tickets and sponsor recognition.

Individual Sponsor Tickets - \$125 _____
 Includes 2 tickets and sponsor recognition.

Individual Tickets - \$35 per person _____

TICKETS WILL NOT BE MAILED, BUT WILL BE AVAILABLE AT THE DOOR THE NIGHT OF THE PARTY.
 Please complete this form and return with your check made payable to:
 MAPL
 P.O. Box 907
 Jackson, MS 39205

TICKET ORDER FORM
Corporate Sponsors

Platinum Sponsor - \$1000 _____
 Gold Sponsor - \$750 _____
 Silver Sponsor - \$500 _____
 All Corporate Sponsors will receive 8 tickets and sponsor recognition.

Individual Sponsor Tickets - \$125 _____
 Includes 2 tickets and sponsor recognition.

Individual Tickets - \$35 per person _____

TICKETS WILL NOT BE MAILED, BUT WILL BE AVAILABLE AT THE DOOR THE NIGHT OF THE PARTY.
 Please complete this form and return with your check made payable to:
 MAPL
 P.O. Box 907
 Jackson, MS 39205

TICKET ORDER FORM
Corporate Sponsors

Platinum Sponsor - \$1000 _____
 Gold Sponsor - \$750 _____
 Silver Sponsor - \$500 _____
 All Corporate Sponsors will receive 8 tickets and sponsor recognition.

Individual Sponsor Tickets - \$125 _____
 Includes 2 tickets and sponsor recognition.

Individual Tickets - \$35 per person _____

TICKETS WILL NOT BE MAILED, BUT WILL BE AVAILABLE AT THE DOOR THE NIGHT OF THE PARTY.
 Please complete this form and return with your check made payable to:
 MAPL
 P.O. Box 907
 Jackson, MS 39205

TICKET ORDER FORM
Corporate Sponsors

Platinum Sponsor - \$1000 _____
 Gold Sponsor - \$750 _____
 Silver Sponsor - \$500 _____
 All Corporate Sponsors will receive 8 tickets and sponsor recognition.

Individual Sponsor Tickets - \$125 _____
 Includes 2 tickets and sponsor recognition.

Individual Tickets - \$35 per person _____

TICKETS WILL NOT BE MAILED, BUT WILL BE AVAILABLE AT THE DOOR THE NIGHT OF THE PARTY.
 Please complete this form and return with your check made payable to:
 MAPL
 P.O. Box 907
 Jackson, MS 39205

TICKET ORDER FORM
Corporate Sponsors

Platinum Sponsor - \$1000 _____
 Gold Sponsor - \$750 _____
 Silver Sponsor - \$500 _____
 All Corporate Sponsors will receive 8 tickets and sponsor recognition.

Individual Sponsor Tickets - \$125 _____
 Includes 2 tickets and sponsor recognition.

Individual Tickets - \$35 per person _____

TICKETS WILL NOT BE MAILED, BUT WILL BE AVAILABLE AT THE DOOR THE NIGHT OF THE PARTY.
 Please complete this form and return with your check made payable to:
 MAPL
 P.O. Box 907
 Jackson, MS 39205



GULF COAST ASSOCIATION OF GEOLOGICAL SOCIETIES

www.gcags.org



1. 65th Annual Convention and Exhibition hosted by the Houston Geological Society, Sept 20-22, 2015, George R. Brown Conv. Center, Houston, Texas

Paper themes:

- New Oil and Gas Discoveries
- Un-Conventional Plays
- Development Field Studies
- GOM Shelf and Onshore Plays
- Salt Tectonics and Traps
- Mexico and Caribbean Plays
- Gulf of Mexico Deepwater
- Environmental Geology
- Coastal Geology and Surface Impact
- Geology-Geophysics-Engineering
- Portfolio Management
- Geophysical Technology

Call for Papers deadline December 13, 2014 webpage: www.gcagshouston.com or contact Linda Sternbach, Technical Program Chair, at linda.sternbach@gmail.com.

2. Society Representative on the GCAGS Board of Directors: The Gulf Coast Association of Geological Societies (GCAGS) has 13 affiliated societies. The affiliated societies are the core of the GCAGS. The President of each affiliated society (or his or her representative) is a voting member of the GCAGS Board of Directors. As such, the societies have a strong voice in the decisions made by the GCAGS Board of Directors.

3. AAPG Advisory Council Representation: The Gulf Coast Section is the largest AAPG Section with close to 9000 members. Because of its size, the GCAGS has two Advisory Council Section Representatives while the other Sections have only one. "The AAPG Advisory Council serves in an advisory capacity to the AAPG Executive Committee. They report on matters involving ethics and discipline, long-range planning, constitutional review, nominations for officers and honors and awards and other special projects as requested by the Executive Committee."

4. GCAGS Student and Faculty Grants: Each year the GCAGS awards \$20,000 in scholarship grant money to approximately 20 deserving graduate or PhD students in the Gulf Coast area. In addition, the GCAGS awards \$10,000 to two faculty members to support their research on Gulf Coast geology.

GCAGS PRESIDENT Charles Sternbach ☐ 281-679-7333 carbodude@gmail.com	GCAGS VICE PRESIDENT Brent Hopkins 361-884-8824 brenth@suemaur.com	GCAGS PAST PRESIDENT Mary Broussard 337-354-5041 Mary_Broussard@fmi.com
2015 GCAGS CONVENTION GENERAL CHAIRMAN Larry Bartell 713-781-6974 lbartell@legendsexpl.com	GCAGS TREASURER Steve Hill ☐ 713-880-4343 ☐ steve.hill@LSDecker.com	GCAGS EXECUTIVE DIRECTOR Kate Kipper 512-925-1200 gcags.mail@gmail.com

5. GCAGS Scholarship Fund Matching Program: The GCAGS periodically initiates a Scholarship Fund-Matching Program for the societies. This is a great opportunity for the societies to double the value of donations going to their scholarship foundations, and in turn, help deserving geoscience students in their local areas. The total value of the donations from the GCAGS is \$195,500.

6. Travel to Student Chapter Leadership Summit: Each year the GCAGS provides \$1000 in support for student travel to the AAPG Student Chapter Leadership Summit. Summit attendees participate in training, interact with AAPG leadership, and establish mentoring relationships.

7. Advertising: Every year each GCAGS Affiliated Society receives a free ¼ page of advertising space (black & white) in the AAPG Explorer.

8. Sponsorship of Section Level Imperial Barrel Award Competition: If sufficient corporate funding is not raised, the GCAGS will donate \$5000 (on an annual basis) to sponsor the Gulf Coast Section IBA competition. The GCAGS also volunteers to host the Gulf Coast Section university IBA teams and administer the entire event including one-day training for all participants. The IBA program is hugely popular with the students and industry support has grown immensely over the last few years. Two Gulf Coast Universities have won the Global IBA competition: The University of Texas, Austin (1 victory), and the University of Louisiana, Lafayette (2 victories).

9. Honors and Awards: Every year members of GCAGS' affiliated societies are nominated by their peers for awards for their service and accomplishments at the Society, Section and the National AAPG levels. Winners are recognized with an award plaque at the GCAGS Convention.

10. Teacher of the Year Award: In addition to an award plaque, the GCAGS gives the winner of the Owen R. Hopkins Outstanding Earth Science Teacher Award \$2000 (\$1500 for personal use and \$500 for use by their school) and an expense paid trip to the Annual GCAGS Convention.

11. GCAGS Transactions: Professional registrants for the GCAGS Convention receive an electronic version (CD, flash drive) of the GCAGS *Transactions* with their registration fee.

12. GCAGS Journal: The *GCAGS Journal* is a peer-reviewed premier publication dedicated to Gulf Coast geoscience research and concepts, Contact Barry J. Katz BarryKatz@chevron.com

13. WWW.GCAGS.ORG: The GCAGS website is linked to local society websites. New material, comments, updates, etc. are welcome.

14. Social Media, ability to send out updates on GCAGS events, contact Dianna Phu dianna.phu@intecsea.com



MGS MONTHLY COLUMN

David T. Dockery III, RPG

GEOLOGIC MAPPING AND ENERGY RESOURCES

David E. Thompson, RPG and David T. Dockery III, RPG, Office of Geology

The following article was first published in the November 2014 issue of MDEQ's *Environmental News*, which also contained an article on the 2014 Governor's Energy Summit.

Ken Burns' recent series on PBS, *The Roosevelts*, showed the accomplishments of the Works Progress Administration (WPA) in building roads, bridges, and airports across the country and even creating art projects for out-of-work artists. What is less well known is that in the late 1930s the WPA provided a federal fund of \$106,193.00 to the Mississippi Geological Survey to do geological surveys of 10 counties. To obtain this fund, the State Geological Survey, as sponsor, pledged to contribute \$12,768 of that amount. The State Legislature appropriated less than \$4,000 to cover the state's share; consequently, it was necessary for the counties to act as cosponsor and provide the balance of \$9,000. The counties responded, and the State Geological Survey's pledge was paid in full. Yazoo County was the second county in the survey. Financial support for this work was provided by Yazoo County, Yazoo City, and the Chamber of Commerce under the leadership of Secretary K. S. Foster. In February of 1939, State Geological Survey geologist Fred Mellen discovered an outcrop of the Moodys Branch Formation on Perry Creek in Yazoo County at an elevation 250 feet above its normal position. Recognizing that this structure might have oil and gas potential, it was reported in a press release dated April 12, 1939. Union Producing Company leased the area over the structure and completed the G. C. Woodruff No. 1 well, the first commercial oil well in Mississippi, just four and a half months after the press release. Tinsley Field in Yazoo County would prove to be the largest oil field in Mississippi with a cumulative production of over 200 million barrels of oil and the potential for another 46 million barrels with tertiary recovery (carbon dioxide injection).

Tinsley Field was a huge return on Yazoo County's financial investment in geology and set off an oil exploration boom that benefited the State as well. Tinsley proved the value of geologic mapping in the discovery of new oil-bearing structures, something already known by major oil companies who had their own field-mapping geologists working in Mississippi. Cooperation between the State Geological Survey, the oil and gas exploration industry, the U.S. Geological Survey, and the Mississippi Geological Society resulted in the production of Mississippi's first statewide geologic map at a scale of 1:500,000 in 1945. Currently, the U.S. Geological Survey contributes around \$5.5 million per year in matching funds through the STATE-MAP program to state geological surveys for geologic mapping. Mississippi has received \$1,752,468 in matching federal funds (from 1994-2014) for geologic mapping through STATEMAP grants.

Dudley Hughes in *Oil in the Deep South* (University Press of Mississippi, 1993) gave an account of Gulf Refining Company's geologic mapping work in Mississippi in 1929 and 1930, some nine years before Mellen discovered Tinsley Field. Bud Norman was on one of Gulf's two-man teams mapping the Yazoo Clay outcrop belt through southeastern Mississippi. According to Hughes, "Bud's team discovered a wide arc in the Yazoo Clay outcrop circling the town of Heidelberg. This later proved to be the result of a large buried structure that formed the trap for the Heidelberg Field, to be discovered 14 years later." Gulf checked with geophysical work to confirm the structure, but it was Bud's surface mapping work that brought it to the company's attention originally. The "wide arc" in the Yazoo Clay outcrop discovered by Bud Norman's mapping team can be seen in a new color version of DeVries' 1963 *Geologic Map of Jasper County Mississippi* in Mississippi Geological Survey Bulletin 95 entitled *Jasper County Mineral Resources*. The map in Figure 1 adds to Hughes' account; while Bud's surface mapping may have focused on the Yazoo Clay outcrop belt, the actual arc that defined the Heidelberg structure was the outcrop belt of the overlying Forest Hill Formation depicted in yellow. Figure 2 is a close up view of the map with an overlay of the Heidelberg East and West fields. Interstate 59 crosses the midsection of both fields and splits the middle of the Yazoo Clay outcrop belt's "wide arc." Figure 3 is an overlay of the Heidelberg fields, associated faults, and contours on the top of the uplifted Cretaceous section (Selma Chalk) underlying the "wide arc" (contour and fault overlay from Puckett, Bearden, Mancini and Panetta, 2000, Topical Report 3—Petroleum Plays and Underdeveloped Reservoirs in the Mississippi Interior Salt Basin).

Geologic mapping and the discovery of the Heidelberg East and West fields have resulted in the production of over 140 million barrels of oil. Denbury Resources has contracted with the Kemper County (Mississippi) Power Plant under construction to purchase the plant's "anthropogenic" carbon dioxide for use in tertiary oil recovery from Heidelberg and expects to produce another 44 million barrels of oil.



MGS MONTHLY COLUMN

David T. Dockery III, RPG

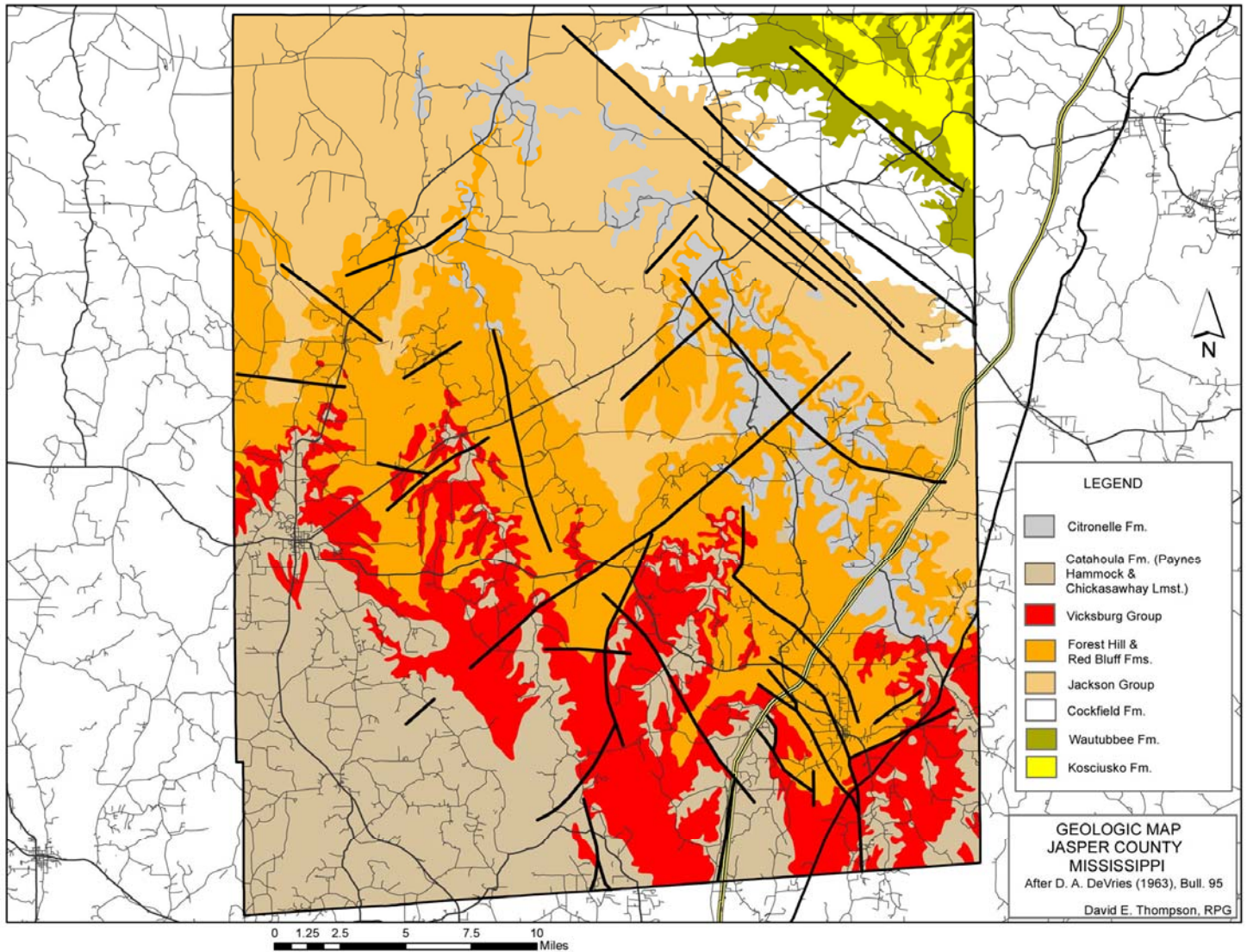


Figure 1. Color version of DeVries 1963 black and white *Geologic Map of Jasper County Mississippi*, showing the “wide arc” in the Yazoo Clay outcrop belt around Heidelberg, Mississippi.



MGS MONTHLY COLUMN

David T. Dockery III, RPG

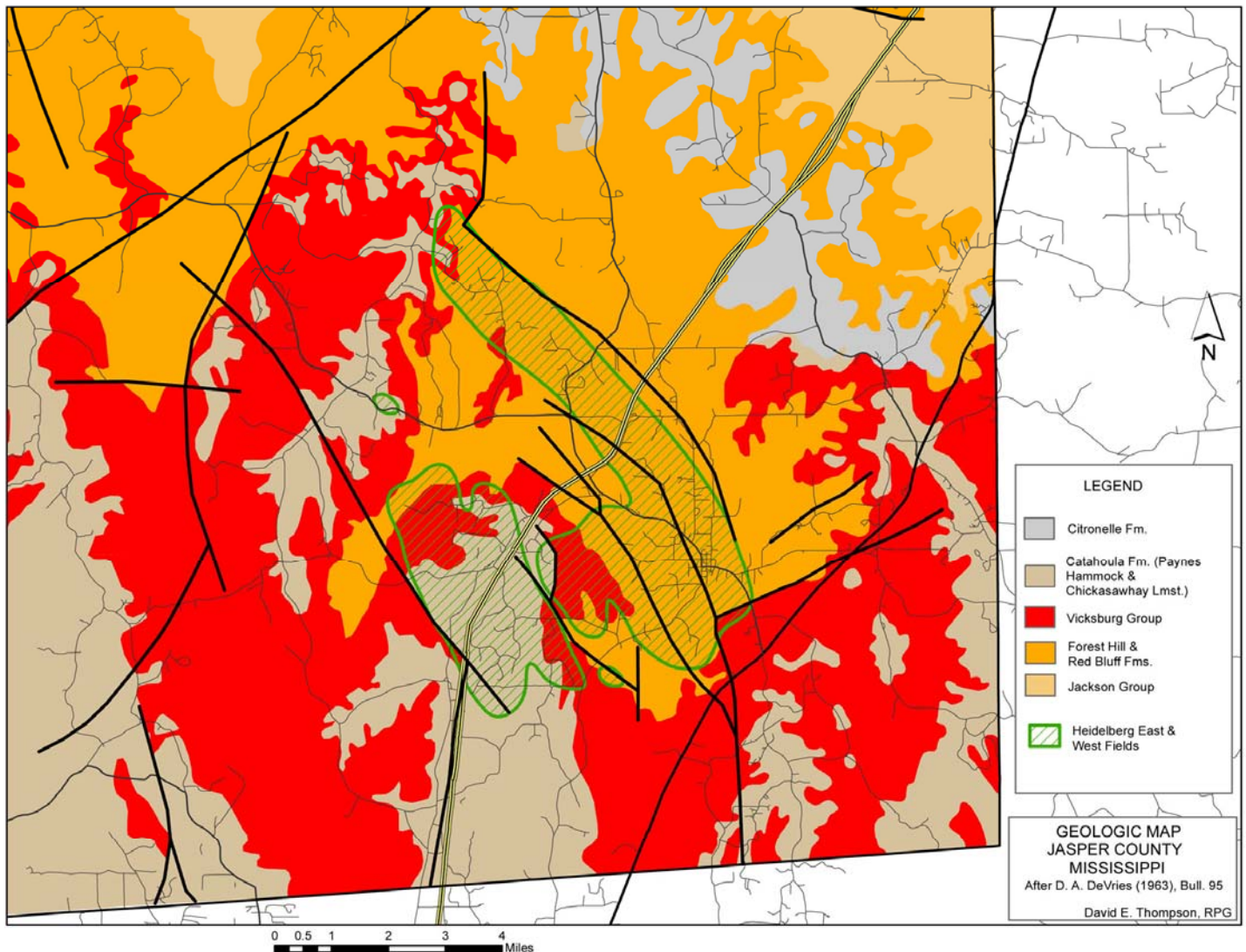


Figure 2. Enlargement of the southeast corner of the *Geologic Map of Jasper County Mississippi*, with Heidelberg East and West fields overlain on the “wide arc” in the Yazoo Clay outcrop belt. Interstate 59 splits the middle of the fields and the arc.



MGS MONTHLY COLUMN

David T. Dockery III, RPG

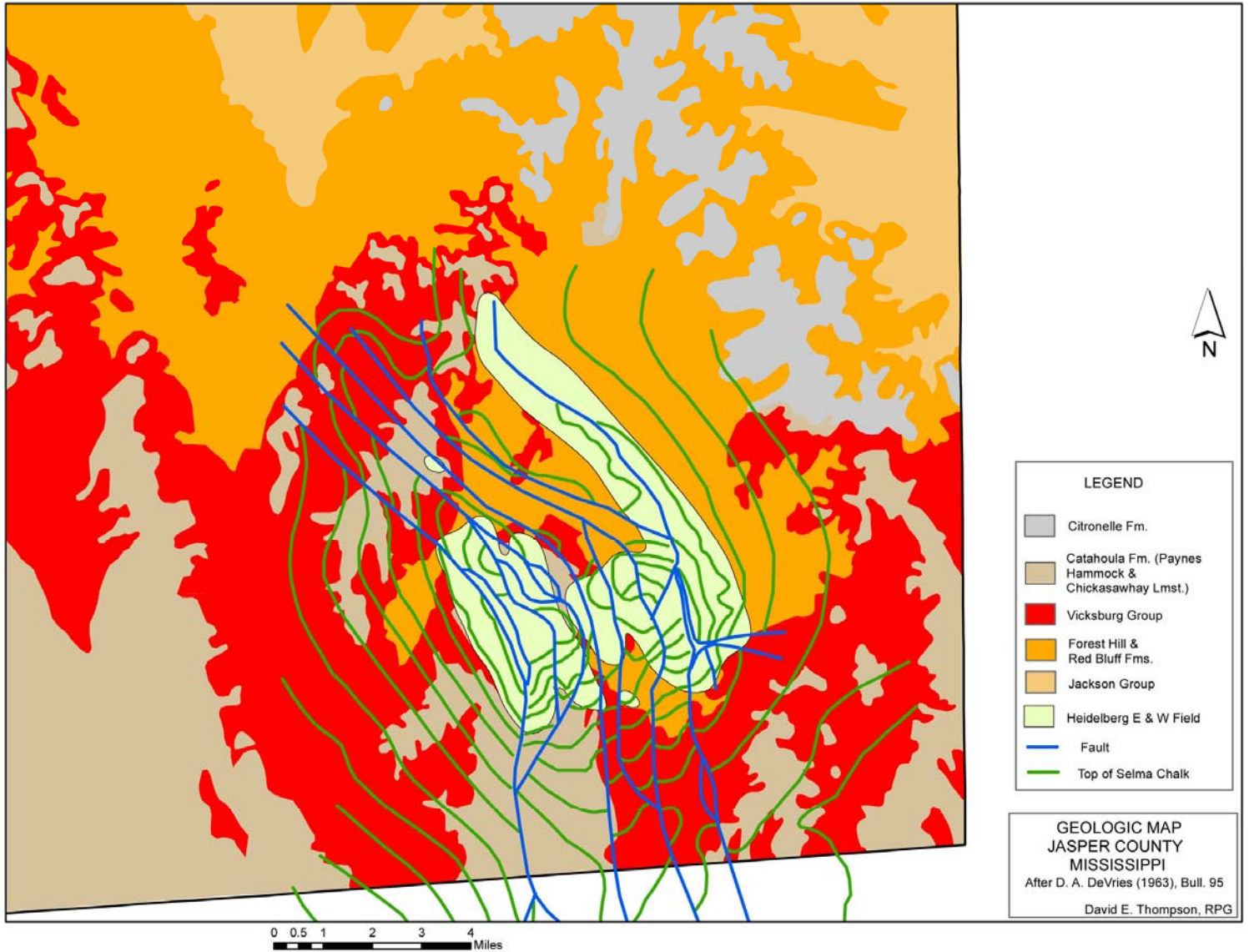


Figure 3. Heidelberg East and West fields, associated faults, and contours of the uplifted Cretaceous section overlain on the “wide arc” in the Yazoo Clay outcrop belt.



JOB OPPORTUNITIES

Environmental Scientist/Geologist

We are EnSafe Inc., an employee-owned, global professional services firm. We strive to provide cutting-edge, creative solutions for our clients. We are currently accepting applications for a staff level geologist, with an environmental focus to support several clients out of our Jackson, MS.

Responsibilities include but are not limited to: performing site investigation activities, remedial system design and operation, subcontractor oversight; preparation of work plans; management of field health and safety, drilling, and scheduling; writing technical reports; and making technical recommendations for site assessment and remediation activities. Experience managing project schedules, staffing, and budgets is a plus, as is experience conducting Phase I Environmental Site Assessments (ESAs). We require a minimum of a BS in Geology with two to five years of experience. HAZWOPER training and certification is required.

Our employees are outgoing, self-motivated, and thrive in a fast-paced consulting environment. Communication, written and verbal, is also critical to success. Overnight and air travel will be required.

We offer a competitive salary and benefits, an outstanding work environment, and the opportunity to work on some really cool projects. For consideration, submit your cover letter, salary expectations, and resume to: resume@ensafe.com

Check us out on the web at: www.ensafe.com
EEO/AA





GEOLOGY POST

ARTICLES, PAPERS or NEWS?

ATTENTION!!!!!! Industry, Professors and Students:

I am adding a dedicated section that includes more content from the industry and our schools.

Submissions can include anything from professional papers, thesis abstracts, job opportunities to pictures. Anything!!!!

If you have any information or news you would like to share with the Society **PLEASE** email them to the MGS Editor at:

mcaton@tellusoperating.com

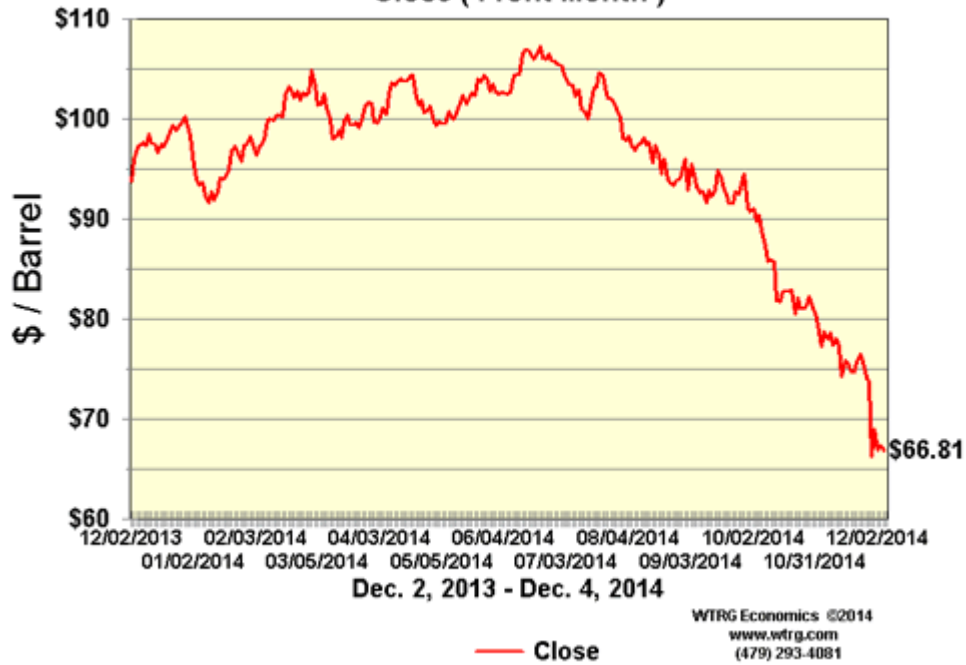
Thanks & Regards,

Matt Caton
Editor

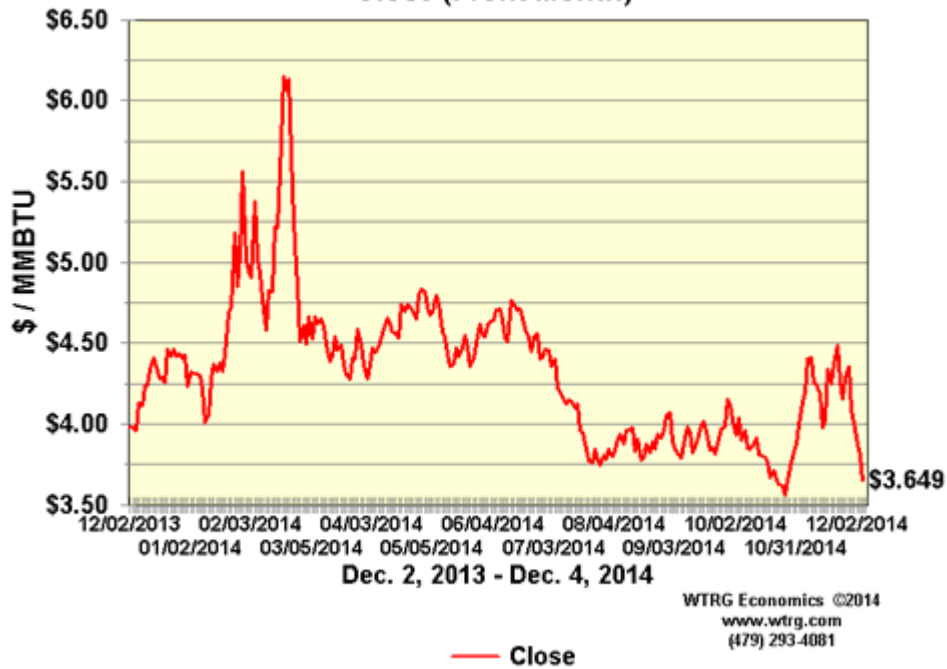


CURRENT PRICES

**NYMEX Crude Oil Futures
Close (Front Month)**



**NYMEX Natural Gas Futures
Close (Front Month)**





CALL FOR PAPERS
65th GCAGS Convention
September 19-22, 2015 •
George R. Brown center
Houston, Texas



New Oil and Gas Discoveries
Un-Conventional Plays
Development Field Studies
GOM Shelf and Onshore Plays
Salt Tectonics and Traps
Mexico and Caribbean Plays
Geophysical Technology
Gulf of Mexico Deepwater
Environmental Geology
Coastal Geology and Surface Impact
Geology-Geophysics-Engineering
Portfolio Management
Climate/ Public Awareness Issues

To participate in the 2015 GCAGS Convention
Oral and Poster presentations

An abstract of up to 250 words should be submitted no later than **December 13, 2014** to Technical Program Chair, Linda Sternbach (linda.sternbach@gmail.com).

After notification of acceptance on **January 20, 2015**, authors submit extended abstracts (1-2 pages) or full papers up to 12 pages to the GCAGS Transactions by **February 20, 2015** to GCAGS Transactions Editor, Steve Levine.

Full instructions for manuscript submissions will be posted online at www.gcags2015.com.

Publish your work in the upcoming GCAGS Journal !!
(a new peer-reviewed journal of Gulf Coast Geoscience).

Instructions: An extended abstract of at least 600 words, including 1–2 representative figures, Should be submitted by **December 2, 2014** to Journal Editor, Barry Katz (BarryKatz@chevron.com).

After acceptance, a full manuscript must be submitted by **March 24, 2015**.

Full instructions for manuscript submissions will be posted online at www.gcags2015.com.



BOLAND SCHOLARSHIP WATCH

Faculty & Students,

This is a new year and the Mississippi Geological Society along with the Boland Scholarship Fund would like to remind you that we want to honor the most outstanding overall students for the 2014-2015 year.

Each year, the Boland Scholarship awards 1 student from each institution a check that rewards students for their hard work and dedication to the Geosciences and their community.

We look forward to a great year and hope to see you at our monthly meetings.

Best Regards,

Matt Caton
Editor



THE UNIVERSITY OF
SOUTHERN
MISSISSIPPI

MILLSAPS
COLLEGE



BOLAND SCHOLARSHIP FUND

Thank you to the following sponsors for their generous donations to the Boland Scholarship Fund!

Dave Cate

George T. Smith

Jack Douglas

Chris Franks

I. Meade Hufford

Maurice Birdwell



2014-2015 MGS MEMBERS

Ken Adams	Stanley King
Bill Bagnall	Cody Lenert
Larry Baria	Ken Magee
Neil Barnes	Joe McDuff
Tiffany Berry	David Miller
Maurice Birdwell	Jack Moody
Randy Bissell	Charlie Morrison
Michael Bograd	Lew Murray
Keith Bowman	James Nix
Robert Branson	James Norris
Matt Caton	Jana Payne
Mark Chapman	Philip Reeves
Phil Cook	Armando Ricci
Jamie Crawford	Mike W Taylor
Charles Doubek	Bob Schneeflock
Jak Douglas	Thomas Seitz
David Dunton	George Self
Dave Easom	George Smith
Jim Files	Charles Sternbach
Chris Franks	Jim Stevens
Stan Galicki	Ed Sticker
Bob Gaston	Tony Stuart
Tom Giosa	John Sullivan
David Hancock	Andrew Sylte
Rovbert Herr IV	Stan Thieling
Ezat Heydari	Sid Thompson
David Hilton	Watts Ueltschey
Todd Hines	Wayne Upchurch
Johnny Holifield	Janet Verret
Bernard Holman	Steve Walkinshaw
I. Meade Hufford	Joe White
Lisa Ivshin	Mark Wyatt
Ron Jinkins	
James Landrem	
Chris Johnson	
Lars Johnson	
Joe Johnson	
Karl Kaufmann	

* This list is updated on a monthly basis.
Please contact Bill Bagnall if you have any questions.

GEO LINK POST

USGS TAPESTRY OF TIME AND TERRAIN <http://tapestry.usgs.gov> The CCGS is donating to all of the 5th and 6th grade schools in the Coastal Bend. Check it out—it is a spectacular map. You might want a framed one for your own office. The one in my office has glass and a metal frame, and it cost \$400 and it does not look as good as the ones we are giving to the schools. Call Owen 510-6224 if you want one for your office for \$150. Duncan, Mike, Chris, Dave, Bob Randy, Seb., Kevin, Ken, Craig, Patrick, Robert.

FREE TEXAS TOPO'S <http://www.tnris.state.tx.us/digital.htm> these are TIFF files from your state government that can be downloaded and printed. You can add them to SMT by converting them first in Globalmapper. Other digital data as well.

FREE NATIONAL TOPO'S [http://store.usgs.gov/b2c_usgs/b2c/start/\(xcm=r3standardpitrex_prd\)/.do](http://store.usgs.gov/b2c_usgs/b2c/start/(xcm=r3standardpitrex_prd)/.do) go to this webpage and look on the extreme right side to the box titled TOPO MAPS DOWNLOAD TOPO MAPS FREE.

<http://www.geographynetwork.com/> Go here and try their top 5 map services. My favorite is 'USGS Elevation Date.' Zoom in on your favorite places and see great shaded relief images. One of my favorites is the Great Sand Dunes National Park in south central Colorado. Nice Dunes.

<http://antwrp.gsfc.nasa.gov/apod/astropix.html> Astronomy picture of the day — awesome. I click this page everyday.

<http://www.spacimaging.com/gallery/ioweek/iow.htm> Amazing satellite images. Check out the gallery.

<http://www.ngdc.noaa.gov/seg/topo/globegal.shtml> More great maps to share with kids and students.

www.geo.org Don't forget we have our own web page.

<http://micro.magneet.fsu.edu/primer/java/scienceoptiscu/owersof10/>

<http://asterweb.jpl.nasa.gov/galery/default.htm> Great satellite images of volcanoes

<http://terra.nasa.gov/gallery/> More here

www.ermapper.com They have a great free downloadable viewer for TIFF and other graphic files called ER Viewer.

www.drillinginfo.com This is an incredible (subscription) well and completion data service for independents. Can be demo'ed for free.

<http://terrasrver.com/> Go here to download free aerial photo images that can be plotted under your digital land and well data. Images down to 1 meter resolution, searchable by Lat Long coordinate. Useful for resolving well location questions.

<http://www.fs.fed.us/gpnf/volcanocams/msh/> This is a live cam of Mt. St. Helens refreshed every 5 minutes. At the bottom are old videos of past eruptions in this cycle. It is worth a watch especially now.



MGS HONORARY MEMBERS

Esther Applin*

Verne Culbertson *

David C. Harrell*

Dudley J. Hughes

Walter P. Jones*

Winnie McGlammery*

Maurice E. Miesse*

Marvin E. Norman*

Thurston Connell Rader*

Henry Toler*

Charles H. Williams

David Cate

Paul Applin*

H. Leroy Francis*

Oleta R. Harrell*

Urban B. Hughes*

Harold Karges*

Thomas McGlothin*

Emil Monsour*

Marvin L. Oxley*

Baxter Smith*

H. Vaughn Watkins

Jerry Zoble

Lawrence F. Boland*

Jim Furrh*

Ralph Hines

Wendell B. Johnson *

Wilbur H. Knight*

Frederic F. Mellen*

William H. Moore*

Richard R. Priddy*

Harry V. Spooner

Stewart W. Welch*

Julius Ridgeway

*** deceased**

MEMBERSHIP APPLICATION / RENEWAL FORM

MISSISSIPPI GEOLOGICAL SOCIETY

P.O. BOX 422, JACKSON, MISSISSIPPI 39205-0422

2014-2015

Membership year is June through May

New Membership (\$20/yr)_____ Renewal (\$20/yr)_____ Student (FREE)_____ Associate (\$20/yr)_____

Boland Scholarship Fund Donation \$_____ Total Amount Enclosed \$_____

Last Name:_____ First:_____ MI:_____

Mailing Address:_____

Office Phone:_____ Home Phone:_____ FAX:_____

E-mail Address: _____

College/University Attended: _____

Degree(s) Obtained and Year(s) Awarded: _____

Professional Associations, Certifications, & Licenses: _____

MGS ADVERTISING ORDER FORM

September 2013 – May 2014

I. Bulletin Advertisements:

<u>Size</u>	<u>Rate/Year</u>	<u>Amt. Remitted</u>
Full Page Ad (6" x 8")	\$500	\$ _____
1/2 Page Ad (6" x 4")	\$300	\$ _____
1/4 Page Ad (3" x 4")	\$200	\$ _____
Business Card Ad (1 1/2" x 3")	\$100	\$ _____
Professional Listing (1/2" x 3")	\$ 50	\$ _____

II. Web Page Advertisements (www.missgeo.com):

<u>Type of Web Page Ad</u>	<u>Rate/Year</u>	<u>Amt. Remitted</u>
Front Page Sponsor (Banner Ad – limit of 5)	\$500	\$ _____
Second Page Banner Ad	\$250	\$ _____
Professional Listing/Link	\$100	\$ _____

(Note: Please contact Steve Walkinshaw at (601) 607-3227 or mail@visionexploration.com for details concerning placing your ad on the MGS web site.)

Total Remitted \$ _____

Please make checks payable to the Mississippi Geological Society. If you have any questions, contact Matt Caton at (601) 898-7444 or mcaton@tellusoperating.com



**When time is money,
Wellsite Geoscience is
money well spent.**

Whether you're exploring a basin, producing a well or completing a shale play, time is money. That's why Weatherford Laboratories brings a suite of formation evaluation technologies right to the wellsite. Utilizing mud gas and cuttings, these technologies provide detailed data on gas composition, organic richness, mineralogy and chemostratigraphy in near real time. As a result, operators now have an invaluable tool to assist with sweet spot identification, wellbore positioning, completion design and hydraulic fracturing. We call it Science At the Wellsite. You'll call it money well spent.

SCIENCE AT THE WELLSITE™
www.weatherfordlabs.com

Formation Evaluation | Well Construction | Completion | Production
©2010 Weatherford. All rights reserved.



EXPLORATION LLC

Jon Q=Petersen, President
Autie T. Orjias, V. P. / Land Manager
Dean Giles, Secretary / Treasurer
S. Cody Lenert, Geologist
Ryan Q=Petersen Land

(318) 222-8406
Fax (318) 222-6061

401 Edwards Street, Suite 1200
Shreveport, LA 71101

P. O. Box 1367
Shreveport, LA 71164

Email:
mei@marlinexploration.com

Joe R. White, Jr.
Petroleum Geologist

400 Travis St., Ste. 909
Shreveport, LA 71101
Ofc. 318-703-2311
Cell. 318-423-9828
Hm. 318-949-3539

AAPG CPG #5580
MS RPG #0097
LA RPG (SUBMITTED)
Jwhite1362@aol.com
Joerjr@gmail.com

Energy Land Services
Oil & Gas Leases

I. Meade Hufford, CPL
Owner

P. O. Box 302
144 Wharton Grove Ln
Weems, VA 22576
Phone: 804-438-5852
Fax: 804-438-9043
Cell: 713-705-7235
hufford1913@aol.com



KARL J KAUFMANN

504 KEYWOOD CIRCLE SUITE A
FLOWOOD, MS 39232
PHONE: 601-936-3601
CELL: 601-209-0948
VALIOSO@BELLSOUTH.NET

BRUNINI

WATTS C. UELTSCHY

OFFICE (601) 960-6871 | FAX (601) 960-6902
E-MAIL WATTS@BRUNINI.COM | WWW.BRUNINI.COM

BRUNINI, GRANTHAM, GROWER & HEWES, PLLC
ATTORNEYS AT LAW

190 EAST CAPITOL STREET SUITE 100 JACKSON, MS 39201
MAILING ADDRESS: P.O. DRAWER 119 JACKSON, MS 39205

Baldwin Madden Energy, LLC
Oil and Gas Acquisitions and Development

Christopher D. Franks
Senior Geologist

333 Texas Street, Suite 1919
Shreveport, Louisiana 71101-3666
318-429-2204 / 318-429-2229 (fax)
chris.franks@BaldwinMadden.com

Oil & Gas solutions that work...

WWW.NEEL-SCHAFFER.COM



Environmental
Permitting/Planning

Water

Wastewater

Site Engineering

Pipeline Surveying

Geotechnical
Engineering

Construction/
Operations

Materials Testing



NEEL-SCHAFFER

Solutions you can build upon



BEAN RESOURCES, INC.

THOMAS A. GIOSA
Geologist

P. O. Box 52768 (70505)
1000 E. St. Mary Blvd.
Lafayette, La. 70503

Off. (337) 234-2326
Fax (337) 234-2330
Cell (337) 288-4089

PRUET OIL COMPANY, LLC

OIL & GAS EXPLORATION

217 WEST CAPITOL STREET

JACKSON, MS 39201

OFFICE: (601) 948-5279 FAX: (601) 944-1281

Joseph H. McDuff
Geologist



351 Chapel Loop
Mandeville, LA 70471
985.845.9430
jhmcduff@charter.net

Philip L. Cook

Petroleum Geologist

105 Livingston Drive
Madison, MS 39110

Cell: 601-954-7689
Email: pcook952@gmail.com



MGS PAST PRESIDENTS

1939-1940	Henry N. Toler	1973-1974	Larry Walter
1940-1941	Urban B. Hughes	1974-1975	W. E. "Gene" Taylor
1941-1942	J. Tom McGlothlin	1975-1976	Jerry E. Zoble
1942-1943	Dave C. Harrell	1976-1977	P. David Cate
1943-1944	K. K. "Bob" Spooner	1977-1978	Sarah Childress
1944-1945	L. R. McFarland	1978-1979	Les Aultman
1945-1946	J. B. Story	1979-1980	Philip R. Reeves
1946-1947	Frederic F. Mellen	1980-1981	Marshall Kern
1947-1948	H. Lee Spyres	1981-1982	Stephen Oivanki
	Robert D. Sprague	1982- 1983	James W. "Buddy" Twiner
1948-1949	Robert D. Sprague	1983- 1984	Charles H. Williams
1949-1950	E. T. "'Mike" Monsour	1984- 1985	C. Kip Ferns
1950-1951	J. Tate Clark	1985-1986	Steven S. Walkinshaw
	Charles E. Buck	1986-1987	J. R. "'Bob" White
1951-1952	George W. Field	1987-1988	Harry Spooner
1952-1953	James L. Md11in, Jr.	1988-1989	Stanley King
1953-1954	Wilbur H. Knight	1989-1990	Stan Galicki
1954-1955	A. Ed Blanton	1990-1991	E. James Files, Jr.
1955-1956	Gilbert A. Talley	1991-1992	Stephen L. Ingram, Sr.
1956-1957	Ben Ploch	1992-1993	Michael Noone/Stanley King
1957-1958	Emil Monsour	1993-1994	Brian Sims
1958-1959	Charles Brown	1994-1995	C. W. "Neil" Barnes
1959-1960	M. F. Kirby	1995-1996	Lester Aultman
1960-1961	Rudy Ewing	1996-1997	Jack S. Moody
1961-1962	Xavier M. Franscogna	1997-1998	George B. Vockroth
1962-1963	Robert B. Ross	1998-1999	Rick L. Ericksen
1963-1964	William A. Skees	1999-2000	Stanley King
	Marvin Oxley	2000-2001	John C. Marble
1964-1965	James F. Bollman	2001-2002	Andrew T. Sylte
1965-1966	Sankey L. Blanton	2002-2003	Aaron Lasker
1966-1967	Alan Jackson	2003-2004	John G. Cox
1967-1968	Julius M. Ridgway	2004-2005	James E. Starnes
1968-1969	Edward D. Minihan	2005-2006	Todd Hines
1969-1970	Kevin E. Cahill	2006-2007	Bob Schneeflock
1970-1971	John Lancaster	2007-2008	Tony Stuart
1971-1972	Larry Boland	2008-2009	Lisa Ivshin
1972-1973	Charles Barton	2009-2010	Joe Johnson
		2010-2011	Brian Sims
		2011-2012	Stanley King
		2012-2013	Jim Files
		2013-2014	Neil Barnes