

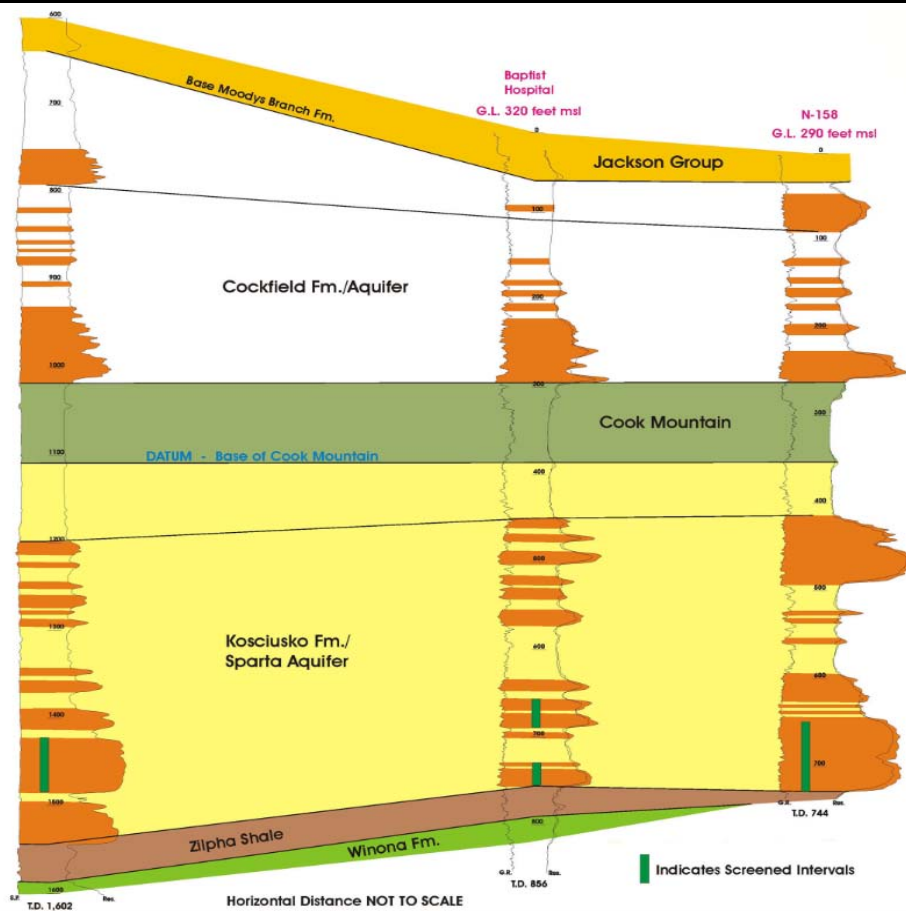
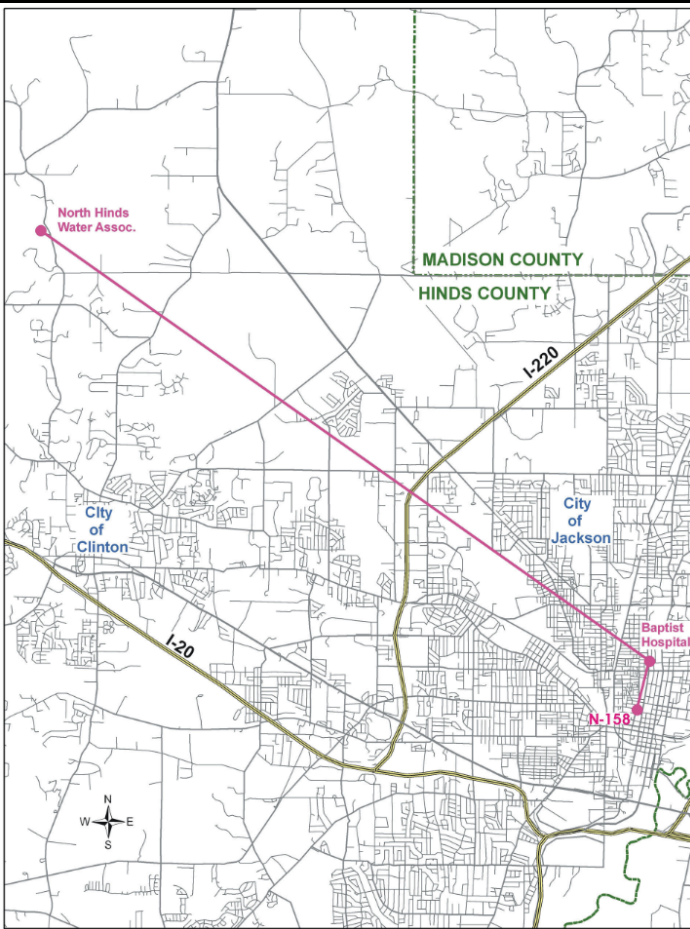
# MISSISSIPPI GEOLOGICAL SOCIETY

# eBULLETIN

Volume 65

No. 3

November 2016



## TUSCALOOSA MARINE SHALE

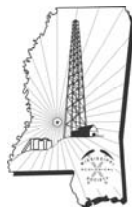
Paul Hackley et al. USGS

## ABSTRACT

Patrick Jordan, Mississippi State University

## THE FUTURE OF MISSISSIPPI'S MAPPING PROGRAM

Dr. David T. Dockery, RPG, Office of Geology



[www.missgeo.com](http://www.missgeo.com)



# MGS 2015-2016 BOARD OF DIRECTORS

## *Officers*

<b>President</b>	Cragin Knox	Independent	<a href="mailto:craginknox@outlook.com">craginknox@outlook.com</a>	(601) 506-0908
<b>1st Vice President</b>	David Hancock	Roundtree & Assoc.		(601) 355-4530
<b>2nd Vice President</b>	Joe Johnson	Spooner Petroleum	<a href="mailto:jjohnson@spoonercompanies.com">jjohnson@spoonercompanies.com</a>	(601) 969-1831
<b>Treasurer</b>	Bill Bagnall	BLM	<a href="mailto:wbagnall@blm.gov">wbagnall@blm.gov</a>	(601) 919-4651
<b>Webmaster</b>	Steve Walkinshaw	Vision Exploration	<a href="mailto:steve@visionexploration.com">steve@visionexploration.com</a>	(601) 607-3227
<b>Advertising</b>	Matt Caton	Tellus Operating	<a href="mailto:mcaton@tellusoperating.com">mcaton@tellusoperating.com</a>	(601) 898-7444
<b>Editor</b>	Matt Caton	Tellus Operating	<a href="mailto:mcaton@tellusoperating.com">mcaton@tellusoperating.com</a>	(601) 898-7444

## *Boland Scholarship*

<b>President</b>	David Hancock	Roundtree & Assoc.		(601) 355-4530
<b>Secretary</b>	Neil Barnes	Independent		(601) 948-5279
<b>Members</b>	Dave Cate	Pruet		
	Tony Stuart	Venture Oil & Gas		(601) 428-7725
	James Starnes	DEQ		
	Joe Johnson	Spooner Petroleum		(601) 969-1831

## *Honorary Membership*

<b>Chairman</b>	Charles H. Williams, Jr. Vaughey & Vaughey			(601) 982-1212
<b>Members</b>	E. Ralph Hines	Moon-Hines		(601) 572-8300
	Jerry Zoble	Independent		

## *MGS Representatives*

<b>AAPG</b>	Maurice Birdwell	Independent		(601) 936-6939
<b>GCAGS</b>	Danny Harrelson	U.S. Army R&D		(601) 634-2685

## *Other*

<b>Environmental</b>	John Ryan	Allen		(601) 936-4440
<b>Historian</b>	Stanley King	Independent		(601) 842-3539



# PRESIDENT'S LETTER

*Cragin Knox*



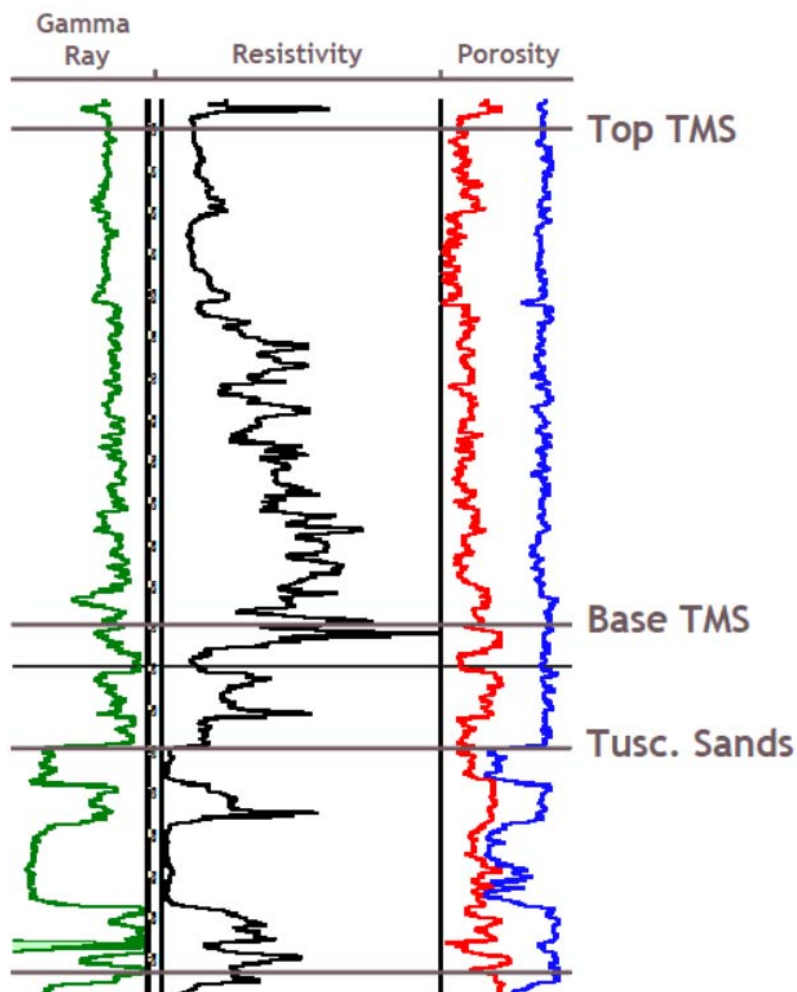
At our last meeting on October 13<sup>th</sup>, our 2014 – 2015 MGS President, Dr. Ezat Heydari presented an update on his work with the international team manning the Mars rover. He is always a riveting presenter, however I felt quite old listening to the various high-tech facets of the program. I remember with amazement watching the first moon landing by Apollo 11 on June 20, 1969 (I am dating myself). I remember the first X-ray diffraction unit that I got to work with in school. It occupied a couple of rooms, as I remember. Ezat described an XRD on the Mars rover the size of a shoe box. We have all seen the various changes in technology in our work, but having a presentation on the “bleeding edge” of technology is a real treat. Thanks again to Ezat for his efforts and his presentation.

Thanks to Neil Barnes for lining up a trio of speakers from the U. S. Geological Survey for our November 10<sup>th</sup> meeting. Paul Hackley, Celest Lohr, and Javin Hatcherian will be visiting the Mississippi Office of Geology core library on the 8<sup>th</sup> and 9<sup>th</sup>, and have graciously agreed to present their research on the Tuscaloosa Marine Shale.

Thanks for the opportunity to serve a President of the Mississippi Geological Society, and I am looking forward to seeing everyone on Thursday.

# 2016-2017 MGS MEETING SCHEDULE

When	What/Who	Where
September 8, 2016	Fall BBQ	Jackson Yacht Club-5:30pm
October 13, 2016	Deep Lakes in Early Mars—Ezat Heydari	River Hills – 11:30am
<b>November 10, 2016</b>	<b>Tuscaloosa Marine Shale Paul Hackley et al. USGS</b>	<b>River Hills – 11:30am</b>
TBD	MAPL Christmas Party and Dance	TBD
January 12, 2017	TBD	River Hills – 11:30am
February 9, 2017	TBD	River Hills – 11:30am
March 9, 2017	TBD	River Hills – 11:30am
April 13, 2017	Boland Scholarship Awards	River Hills – 11:30am
May 11, 2017	Spring Fling	Jackson Yacht Club– 5:30pm



## OFFICERS MEETINGS

September 6, 2015
October 11, 2015
<b>November 8, 2015</b>
January 10, 2016
February 7, 2016
March 7, 2016
April 11, 2016
May 9, 2016



# MGS NOVEMBER SPEAKER

*Paul Hackley et al. USGS*



## U.S. Geological Survey Assessment of the Tuscaloosa Marine Shale

Paul C. Hackley, Frank Dulong, Catherine B. Enomoto, Javin Hatcherian, Celeste Lohr, William Rouse, Brett J. Valentine

The U.S. Geological Survey (USGS) is assessing undiscovered hydrocarbon resources in the Tuscaloosa marine shale (TMS) of south Mississippi and adjacent areas of Louisiana. This three-year project will estimate undiscovered resources via established USGS methodology using new data from analyses of organic petrology, geochemistry, and mineralogy of rock samples, oil chemistry, sediment provenance (detrital zircon U-Pb geochronology), biostratigraphy, fluid inclusion analyses, and subsurface mapping. Results to date suggest low organic carbon (avg. TOC ~0.75%) and dominance of gas-prone Type III kerogen, potentially inconsistent with a self-sourced model for TMS-produced oils. However, although the TMS displays poor present-day source rock properties, oil-source correlation data suggest it is the best candidate for a local source rock and has apparently expelled oils to conventional reservoirs and retained oils for production by horizontal drilling and artificial stimulation. The presentation will discuss this and other aspects of the USGS study, which is scheduled for completion in mid-2017.



# **TUSCALOOSA MARINE SHALE**

## *USGS Questions?*

### **PLEASE BRING YOUR RESPONSES TO THE LUNCHEON**

**For operators of productive TMS wells specifically what zone they are producing from?**

**How close to top of Lower Tuscaloosa are they placing the horizontals?**

**Are they actually targeting a zone with resistivity greater than 5 ohms?**

**What other parameters are important to successful completions, such as porosity, permeability, etc.?**

**Is a relationship between fluids produced from TMS versus fluids produced from Lower Tuscaloosa? Do any operators have wells where oil is produced from TMS AND L. Tusc.?**

**Where gas is produced from both TMS and L. Tusc.?**

**Or is L. Tusc usually wet when TMS is productive?**

**Are there any instances where TMS was completed and wet, and operator was able to recomplete in Upper Tuscaloosa successfully? Was oil or gas produced in this case?**

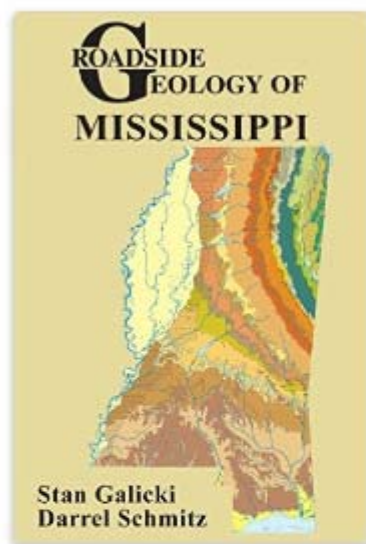
**If the TMS is a poor oil-prone source rock (low TOC, Type III kerogen) then where is the oil coming from?**

**Long distance lateral/updip migration? Another local source in the play area?**

**How does the TMS correlate westward to the Eagle Ford and Austin Chalk?**

# AVAILABLE NOW

Books › Travel › United States



[See this image](#)

## Roadside Geology of Mississippi (Roadside Geology Series) Paperback –

October 15, 2016

by Stan Galicki (Author), Darrel Schmitz (Author)

[Be the first to review this item](#)

**#1 New Release** in East South Central US Travel Books

[▶ See all formats and editions](#)

**Paperback**  
**\$24.00**

3 Used from \$16.94

5 New from \$17.02

It's a little-known fact, but Mississippi has a volcano. True, it's buried under 2,600 feet of sediment, but it was red hot and active roughly 79 to 69 million years ago, and evidence of its bulging remains are visible in the Jacksonville area.

Mississippi emerged along the edge of a massive tear that

[▶ Read more](#)



# CURRENT PRICES

## Crude Oil - Electronic Dec 2016

NMN: CLZ6

[OVERVIEW](#) [CHARTS](#) [HISTORICAL QUOTES](#)

Market open

**\$44.60** ↓

Change **-0.29 -0.65%**  
Volume **174,773**  
Nov 8, 2016 9:34 a.m.  
Quotes are delayed by 10 min

Previous close **\$ 44.89**

Day low **\$44.45** Day high **\$45.26**

Open: 44.97

52 week low **\$34.06** 52 week high **\$53.62**

Compare: Indexes  [Add](#)

1d · 5d · 3m · 6m · 1y · 3y · 5y   [Set](#)

## Natural Gas - Electronic Jan 2017

NMN: NGF17

[OVERVIEW](#) [CHARTS](#) [HISTORICAL QUOTES](#)

Market open

**\$2.87** ↓

Change **-0.10 -3.49%**  
Volume **38,079**  
Nov 8, 2016, 9:35 a.m.  
Quotes are delayed by 10 min

Previous close **\$ 2.98**

Day low **\$2.85** Day high **\$3.01**

Open: 2.99

52 week low **\$2.50** 52 week high **\$3.68**

Compare: Indexes  [Add](#)

1d · 5d · 3m · 6m · 1y · 3y · 5y   [Set](#)







# GEOLOGY POST

## *Mississippi State University*

Submitted by Patrick Jordan  
Mississippi State University

**Title: STRATIGRAPHIC VARIABILITY OF THE DEMOINESIAN MARMATON GROUP ACROSS THE LIPS FAULT SYSTEM IN THE TEXAS PANHANDLE GRANITE WASH, SOUTHERN ANADARKO BASIN**

Authors: Jordan, Patrick D. Department Of Geosciences, Mississippi State University  
patrick.jordan@me.com. Melick, Jesse J., BP Americas.

The Demoinesian Marmaton Group contains over 2,000 feet of stacked Granite Wash reservoirs, bounded by regionally correlative flooding surfaces along the faulted southern portion of the Anadarko Basin. Syndepositional faulting further complicates discontinuous, tight-sandstone and conglomeratic reservoirs sourced from the Amarillo-Wichita Uplift, just several miles to the south. Syndepositional faults were interpreted from cross sections, and integrated with fault-contoured structure and isopach maps. Episodic events of fault movement are recorded by thickness and facies changes in reservoirs across fault blocks of the Lips Fault System. 17 high-resolution, regionally correlative, ice-house flooding surfaces were mapped in 604 wells over 810 square miles to constrain reservoir thickness changes across fault blocks, and isolated deposition of clastic detritus influenced by faulting events. 13 lithofacies were grouped into five reservoir class facies from 87 feet of described core to interpret depositional environments, and were compared with wireline log responses. Well log signatures were calibrated to lithofacies from cored wells to well log signatures in non-cored wells to serve as an analog for depositional processes in non-cored wells. This will support well log interpretation for non-cored intervals with similar wireline log responses. Preliminary conclusions suggest that fault movement was intermittent throughout this 1.5-million-year interval. The outcomes of this study will provide a connection between stratigraphic variability and reservoir quality for the Marmaton Group across the Lips Fault System. The results will be used to pin-point the timing of faulting events associated with specific stratigraphic intervals.





# GEOLOGY POST

## ARTICLES, PAPERS or NEWS?

**ATTENTION!!!!!!** Industry, Professors and Students:

I am adding a dedicated section that includes more content from the industry and our schools.

Submissions can include anything from professional papers, thesis abstracts, job opportunities to pictures. Anything!!!!

If you have any information or news you would like to share with the Society **PLEASE** email them to the MGS Editor at:

[mcaton@tellusoperating.com](mailto:mcaton@tellusoperating.com)

Thanks & Regards,

Matt Caton  
Editor

**Call for Abstracts: Deadline 11/15/2016**



**81<sup>st</sup> Annual Mississippi Academy of Sciences  
Meeting**

**February 23-24, 2017**

**Thad Cochran Center • University of Southern Mississippi •  
Hattiesburg, MS**

**Submission Deadline: November 15, 2016  
250-Word Limit**

All Sciences and Engineering-related disciplines, including Basic, Applied,  
Clinical, Translational, and  
Population sciences welcome.

Submitted abstracts are peer-reviewed. Accepted abstracts are published in a  
supplement to the annual ***Journal of the Mississippi Academy of Sciences***.  
The annual meeting provides an excellent forum for members to exchange ideas  
and information. Students will be eligible for awards (see website for more  
information)

To submit, go to <http://msacad.org/submit-an-abstract/submit-on-line>



# MONTHLY POST

## *Dr. David T. Dockery III RPG*

### THE FUTURE OF MISSISSIPPI'S GEOLOGIC MAPPING PROGRAM

David T. Dockery III, RPG, MDEQ Office of Geology

This is the third and final article on the Mississippi Department of Environmental Quality, Office of Geology's, surface geology mapping program. A few high points in a look over this program's long history:

- (1) Eugene Hilgard discovered and published the Jackson Dome in 1860, later to become the State's first significant gas field.
- (2) Fredrick Mellen discovered the first and largest oil field at Tinsley Dome while mapping the geology of Yazoo County in 1937, a discovery that brought the oil industry to Mississippi and then jumped started it with federal assistance due to the need for oil during World War II, leading to the discover of other major oil fields.
- (3) The Winton and Yazoo County geology bulletins were published in 1939 and 1940 and became the first in a string of 41 county geology bulletins with maps, spanning the years from 1939 to 1998 with the publication of the Tishomingo County Bulletin.
- (4) Surface geology mapping shifted to 7.5-minute geologic quadrangle maps, beginning with David Thompson's differentiation of the Midway, Wilcox, and Claiborne Groups and associated lignite seams in northern Mississippi with assistance from USGS STATEMAP grants. This work was done just in time for the licensing of the state's two lignite mines, which utilized the maps.
- (5) STATEMAP work continued with James Starnes mapping the Vicksburg Group and the Oligocene to Pliocene Grand Gulf Group, plus coastal terraces in southern Mississippi. One of James' maps in Claiborne County is now a 5- million-dollar map in an arbitration settlement between a pipe line and a pipe line drilling contractor who encountered hard rock (quartzite and sandstone), while drilling a large-diameter hole under a river. The pipeline company's geotechnical report did not include the presence of rock, but James' quadrangle map reported it present.
- (6) Geologic maps are now available as digital online publications, including 160 geologic quadrangle maps, thanks to the work of Dan Morse. Our publication series, including county bulletins, are available online thanks to the work of James Starnes.

So, how do we insure that the state's geologic mapping program will be vibrant in the years to come? One of our strategies is to hire great staff with a passion for geology. In choosing such passionate people, we look for students and recent graduates who work for free. And that's what we got when we hired Tyler Berry, a graduate of Millsaps College. Figure 1 shows Tyler as a volunteer worker in the excavation of a fossil whale skull in Yazoo County.



## MONTHLY POST

*Dr. David T. Dockery III RPG*



Figure 1. Krista Clark, Dakota Guillory, Tyler Berry, and John Banks. Tyler is pointing to a fossil whale skull in the Yazoo Clay exposed in a tributary of Techeva Creek in Yazoo County, Mississippi. Picture taken by James Starnes in April of 2010.



# MONTHLY POST

## *Dr. David T. Dockery III RPG*

Tyler's task now, as a field geologist with MDEQ's Office of Geology, is to continuing our mapping program where David Thompson left off in the Midway, Wilcox, and Claiborne Groups. He is also working on a master's degree in geology at Mississippi State University; his thesis topic is on depositional systems in the Kosciusko Formation. In the subsurface, this formation is known as the Sparta aquifer, the fourth most important aquifer in the state. So, while Tyler is mapping the outcrop belt of the Kosciusko Formation for MDEQ, he will also be mapping the same formation in the subsurface for his master's degree. Channel sands in the Kosciusko/Sparta Formation and the overlying Cockfield Formation are important groundwater resources for central and northwestern Mississippi (Figure 2).

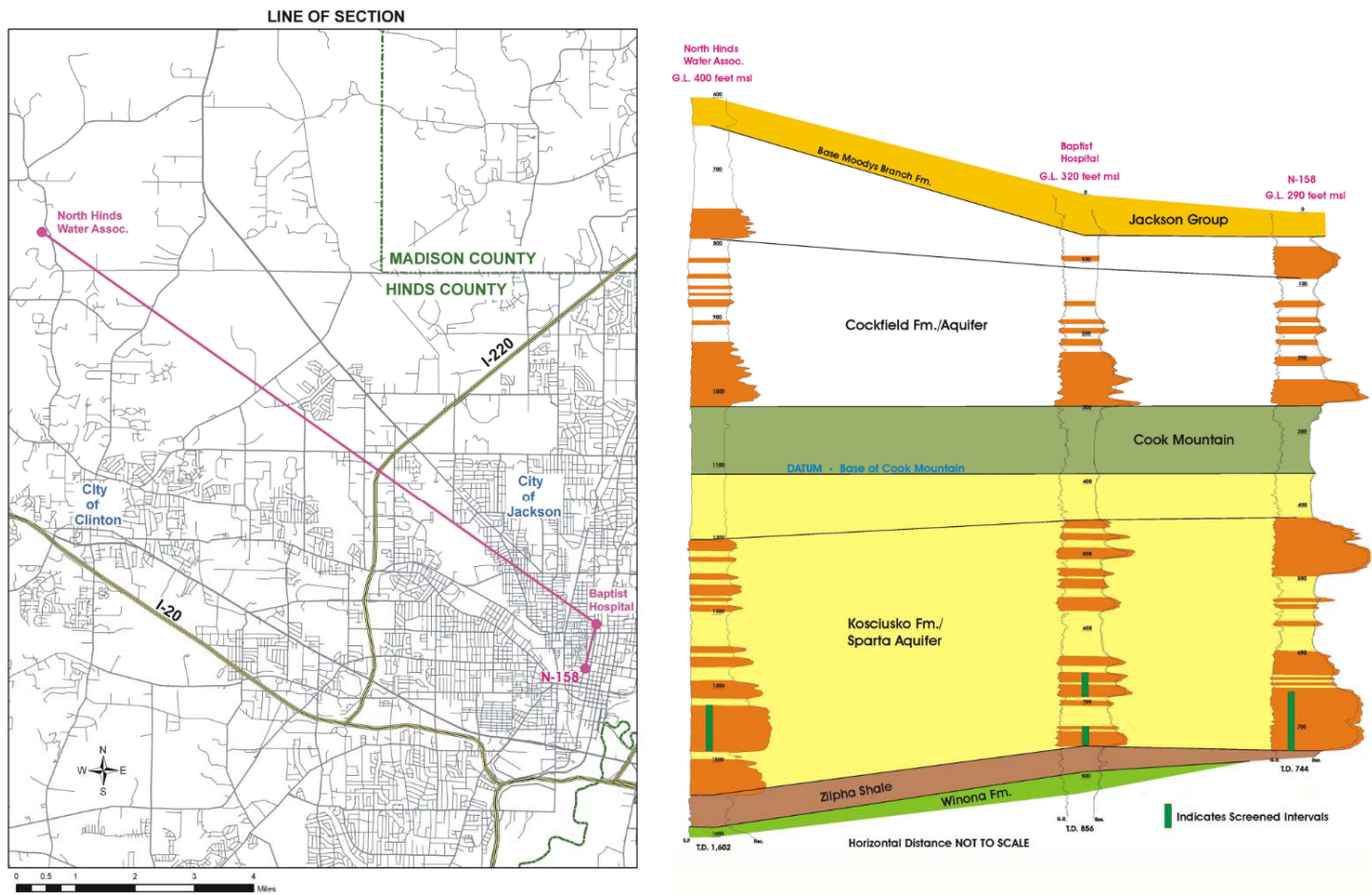


Figure 2. Aquifer sand distribution in the Sparta and Cockfield aquifers in Hinds County, Mississippi.



# BOLAND SCHOLARSHIP WATCH

Faculty & Students,

This is a new year and the Mississippi Geological Society along with the Boland Scholarship Fund would like to remind you that we want to honor the most outstanding overall students for the 2016-2017 year.

Each year, the Boland Scholarship awards 1 student from each institution a check that rewards students for their hard work and dedication to the Geosciences and their community.

We look forward to a great year and hope to see you at our monthly meetings.

Best Regards,

Matt Caton



THE UNIVERSITY OF  
SOUTHERN  
MISSISSIPPI

MILLSAPS  
COLLEGE





# **2016-2017 BOLAND FUND DONATIONS**

**Maurice Birdwell  
Joe White  
Kaci Myers & Family  
Bob Schneeflock  
Ruth Johnson  
Melissa Perry  
Katie Perry  
Katelin Thompson  
Jessica Wagner & Family  
Jena Giardina & Family  
Ty Wade  
Reagan Byrd  
J. D. Mallory  
Mai Truong  
Dave Cate  
Jacob Pngetti**

Thanks for your generous donations to the 2016-2017 Boland Fund

# GEO LINK POST

**USGS TAPESTRY OF TIME AND TERRAIN** <http://tapestry.usgs.gov> The CCGS is donating to all of the 5th and 6th grade schools in the Coastal Bend. Check it out—it is a spectacular map. You might want a framed one for your own office. The one in my office has glass and a metal frame, and it cost \$400 and it does not look as good as the ones we are giving to the schools. Call Owen 510-6224 if you want one for your office for \$150. Duncan, Mike, Chris, Dave, Bob Randy, Seb., Kevin, Ken, Craig, Patrick, Robert.

**FREE TEXAS TOPO'S** <http://www.tnris.state.tx.us/digital.htm> these are TIFF files from your state government that can be downloaded and printed. You can add them to SMT by converting them first in Globalmapper. Other digital data as well.

**FREE NATIONAL TOPO'S** [http://store.usgs.gov/b2c\\_usgs/b2c/start/\(xcm=r3standardpitrex\\_prd\)/.do](http://store.usgs.gov/b2c_usgs/b2c/start/(xcm=r3standardpitrex_prd)/.do) go to this webpage and look on the extreme right side to the box titled TOPO MAPS DOWNLOAD TOPO MAPS FREE.

<http://www.geographynetwork.com/> Go here and try their top 5 map services. My favorite is 'USGS Elevation Date.' Zoom in on your favorite places and see great shaded relief images. One of my favorites is the Great Sand Dunes National Park in south central Colorado. Nice Dunes.

<http://antwrp.gsfc.nasa.gov/apod/astropix.html> Astronomy picture of the day — awesome. I click this page everyday.

<http://www.spacimaging.com/gallery/ioweek/iow.htm> Amazing satellite images. Check out the gallery.

<http://www.ngdc.noaa.gov/seg/topo/globegal.shtml> More great maps to share with kids and students.

[www.geo.org](http://www.geo.org) Don't forget we have our own web page.

<http://micro.magneet.fsu.edu/primer/java/scienceoptiscu/owersof10/>

<http://asterweb.jpl.nasa.gov/galery/default.htm> Great satellite images of volcanoes

<http://terra.nasa.gov/gallery/> More here

[www.ermapper.com](http://www.ermapper.com) They have a great free downloadable viewer for TIFF and other graphic files called ER Viewer.

[www.drillinginfo.com](http://www.drillinginfo.com) This is an incredible (subscription) well and completion data service for independents. Can be demo'ed for free.

<http://terrasrver.com/> Go here to download free aerial photo images that can be plotted under your digital land and well data. Images down to 1 meter resolution, searchable by Lat Long coordinate. Useful for resolving well location questions.

<http://www.fs.fed.us/gpnf/volcanocams/msh/> This is a live cam of Mt. St. Helens refreshed every 5 minutes. At the bottom are old videos of past eruptions in this cycle. It is worth a watch especially now.



# MGS HONORARY MEMBERS

**Esther Applin\***

**Verne Culbertson \***

**David C. Harrell\***

**Dudley J. Hughes\***

**Walter P. Jones\***

**Winnie McGlammery\***

**Maurice E. Miesse\***

**Marvin E. Norman\***

**Thurston Connell Rader\***

**Henry Toler\***

**Charles H. Williams**

**David Cate**

**Paul Applin\***

**H. Leroy Francis\***

**Oleta R. Harrell\***

**Urban B. Hughes\***

**Harold Karges\***

**Thomas McGlothin\***

**Emil Monsour\***

**Marvin L. Oxley\***

**Baxter Smith\***

**H. Vaughn Watkins**

**Jerry Zoble**

**Stanley King**

**Lawrence F. Boland\***

**Jim Furrh\***

**Ralph Hines**

**Wendell B. Johnson \***

**Wilbur H. Knight\***

**Frederic F. Mellen\***

**William H. Moore\***

**Richard R. Priddy\***

**Harry V. Spooner**

**Stewart W. Welch\***

**Julius Ridgeway**

**\* deceased**

**MEMBERSHIP APPLICATION / RENEWAL FORM**

**MISSISSIPPI GEOLOGICAL SOCIETY**

**P.O. BOX 422, JACKSON, MISSISSIPPI 39205-0422**

**2016-2017**

Membership year is June through May

New Membership (\$20/yr)\_\_\_\_\_ Renewal (\$20/yr)\_\_\_\_\_ Student (FREE)\_\_\_\_\_ Associate (\$20/yr)\_\_\_\_\_

Boland Scholarship Fund Donation \$\_\_\_\_\_ Total Amount Enclosed \$\_\_\_\_\_

Last Name:\_\_\_\_\_ First:\_\_\_\_\_ MI:\_\_\_\_\_

Mailing Address:\_\_\_\_\_

Office Phone:\_\_\_\_\_ Home Phone:\_\_\_\_\_ FAX:\_\_\_\_\_

E-mail Address: \_\_\_\_\_

College/University Attended: \_\_\_\_\_

Degree(s) Obtained and Year(s) Awarded: \_\_\_\_\_

Professional Associations, Certifications, & Licenses: \_\_\_\_\_

## MGS ADVERTISING ORDER FORM

September 2016 – May 2017

### I. Bulletin Advertisements:

<u>Size</u>	<u>Rate/Year</u>	<u>Amt. Remitted</u>
Full Page Ad (6" x 8")	\$500	\$ _____
1/2 Page Ad (6" x 4")	\$300	\$ _____
1/4 Page Ad (3" x 4")	\$200	\$ _____
Business Card Ad (1 1/2" x 3")	\$100	\$ _____
Professional Listing (1/2" x 3")	\$ 50	\$ _____

### II. Web Page Advertisements ([www.missgeo.com](http://www.missgeo.com)):

<u>Type of Web Page Ad</u>	<u>Rate/Year</u>	<u>Amt. Remitted</u>
Front Page Sponsor (Banner Ad – limit of 5)	\$500	\$ _____
Second Page Banner Ad	\$250	\$ _____
Professional Listing/Link	\$100	\$ _____

(Note: Please contact Steve Walkinshaw at (601) 607-3227 or [mail@visionexploration.com](mailto:mail@visionexploration.com) for details concerning placing your ad on the MGS web site.)

**Total Remitted** \$ \_\_\_\_\_

Please make checks payable to the Mississippi Geological Society. If you have any questions, contact Matt Caton at (601) 898-7444 or [mcaton@tellusoperating.com](mailto:mcaton@tellusoperating.com)



# 2015-2016 MGS MEMBERS

Bill Bagnall	Howard Lowery
Robert Berry	Ken Magee
Maurice Birdwell	Conner McCluer
Michael Bograd	Joe McDuff
Keith Bowman	Jack Moody
Chris Bowen	Charlie Morrison
Jared Bullock	Jess New
Alvin Byrd	James Nix
Regar Byrd	James Norris
Dawn Bissell	Jacob Pongetti
Mat Caton	Jessica Reynolds
Krista Clark	Michael Rohrer
David Dockery	Brooks Rosandich
Dave Easom	Bob Schneeflock
Rick Ericksen	Thomas Seitz
Jo Everett	George Self
Jim Files	Jeremi Simmons
David Handcock	Joe Stearns
Austin Harris	James Stephens
James Harris	Lindsey Stewart
Robert Herr	Ed Stricker
David Hilton	Andy Sylte
Todd Hines	John Sullivan
I. Meade Hufford	Watts Ueltschey
Kevin Jeffreys	Steve Walkinshaw
Joe Johnson	Ricky Warren
Courtney Killian	Joe White
Cragin Knox	Maya Willis
Christopher Kyler	William Young
Cody Lenert	

This list is updated monthly. Please contact Bill Bagnall if you have questions.

# MILBIRD RESOURCES, LLC

*Oil & Gas Exploration*

## Maurice N. Birdwell

Managing Partner  
AAPG Certified Petroleum Geologist  
Reg. Prof. Geol. Ark. La. Miss. Tex

2043 Oak Ridge Drive  
Pearl, MS 39208

601.936.6939  
mnbirdwell@comcast.net

## Joe R. White, Jr.

Petroleum Geologist

8505 Dogwood Trail  
Haughton, LA 71037  
Cell. 318-423-9828  
Hm. 318-949-3539  
Available for Consulting

AAPG CPG #5580  
MS RPG #0097  
LA CPG #345  
Jwhite1362@aol.com  
Joerjrw@gmail.com

# PRUET OIL COMPANY LLC

*Oil & Gas Exploration*

217 W. Capitol St.  
Jackson, MS 39201

601-948-5279  
dcate@pruet.com

## Joseph H. McDuff

Geologist

351 Chapel Loop  
Mandeville, LA 70471  
985.845.9430

jhmcduff@charter.net



EXPLORATION LLC

Jon Q=Petersen, *President*  
Autie T. Orjias, *V. P. / Land Manager*  
Dean Giles, *Secretary / Treasurer*  
S. Cody Lenert, *Geologist*  
Ryan Q=Petersen *Land*

**(318) 222-8406**  
**Fax (318) 222-6061**

401 Edwards Street, Suite 1200  
Shreveport, LA 71101

P. O. Box 1367  
Shreveport, LA 71164

Email:  
mei@marlinexploration.com



# MGS PAST PRESIDENTS

1939-1940	Henry N. Toler	1973-1974	Larry Walter
1940-1941	Urban B. Hughes	1974-1975	W. E. "Gene" Taylor
1941-1942	J. Tom McGlothlin	1975-1976	Jerry E. Zoble
1942-1943	Dave C. Harrell	1976-1977	P. David Cate
1943-1944	K. K. "Bob" Spooner	1977-1978	Sarah Childress
1944-1945	L. R. McFarland	1978-1979	Les Aultman
1945-1946	J. B. Story	1979-1980	Philip R. Reeves
1946-1947	Frederic F. Mellen	1980-1981	Marshall Kern
1947-1948	H. Lee Spyres	1981-1982	Stephen Oivanki
	Robert D. Sprague	1982- 1983	James W. "Buddy" Twiner
1948-1949	Robert D. Sprague	1983- 1984	Charles H. Williams
1949-1950	E. T. "'Mike" Monsour	1984- 1985	C. Kip Ferns
1950-1951	J. Tate Clark	1985-1986	Steven S. Walkinshaw
	Charles E. Buck	1986-1987	J. R. "'Bob" White
1951-1952	George W. Field	1987-1988	Harry Spooner
1952-1953	James L. Md11in, Jr.	1988-1989	Stanley King
1953-1954	Wilbur H. Knight	1989-1990	Stan Galicki
1954-1955	A. Ed Blanton	1990-1991	E. James Files, Jr.
1955-1956	Gilbert A. Talley	1991-1992	Stephen L. Ingram, Sr.
1956-1957	Ben Ploch	1992-1993	Michael Noone/Stanley King
1957-1958	Emil Monsour	1993-1994	Brian Sims
1958-1959	Charles Brown	1994-1995	C. W. "Neil" Barnes
1959-1960	M. F. Kirby	1995-1996	Lester Aultman
1960-1961	Rudy Ewing	1996-1997	Jack S. Moody
1961-1962	Xavier M. Franscogna	1997-1998	George B. Vockroth
1962-1963	Robert B. Ross	1998-1999	Rick L. Ericksen
1963-1964	William A. Skees	1999-2000	Stanley King
	Marvin Oxley	2000-2001	John C. Marble
1964-1965	James F. Bollman	2001-2002	Andrew T. Sylte
1965-1966	Sankey L. Blanton	2002-2003	Aaron Lasker
1966-1967	Alan Jackson	2003-2004	John G. Cox
1967-1968	Julius M. Ridgway	2004-2005	James E. Starnes
1968-1969	Edward D. Minihan	2005-2006	Todd Hines
1969-1970	Kevin E. Cahill	2006-2007	Bob Schneeflock
1970-1971	John Lancaster	2007-2008	Tony Stuart
1971-1972	Larry Boland	2008-2009	Lisa Ivshin
1972-1973	Charles Barton	2009-2010	Joe Johnson
		2010-2011	Brian Sims
		2011-2012	Stanley King
		2012-2013	Jim Files
		2013-2014	Neil Barnes
		2014-2015	Ezat Heydari
		2015-2016	Jack Moody