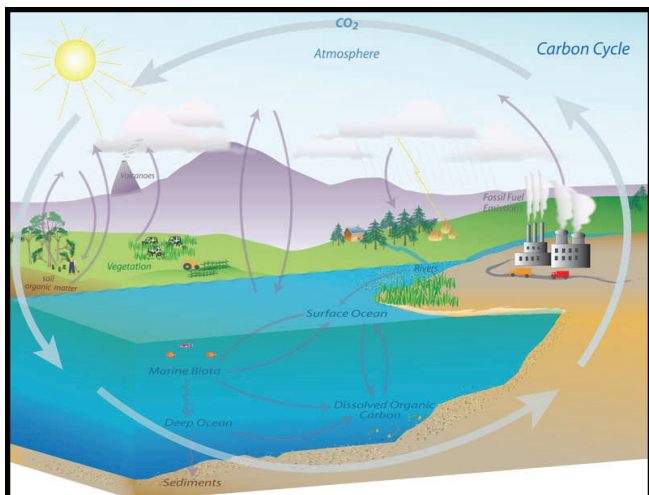
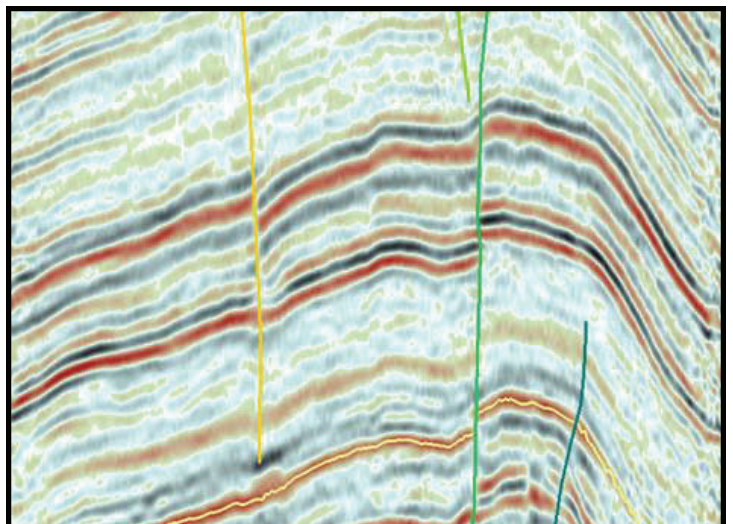
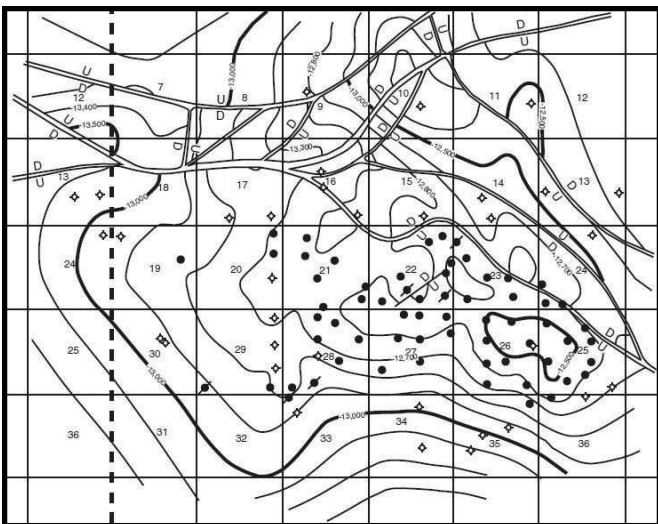




# MISSISSIPPI GEOLOGICAL SOCIETY

## eBULLETIN





# MGS 2012-2013 BOARD OF DIRECTORS

## *Officers*

<b>President</b>	Jim Files	Independent	<a href="mailto:jfgd@comcast.net">jfgd@comcast.net</a>	(601) 842-3539
<b>1st Vice President</b>	Neil Barnes	Tellus Operating	<a href="mailto:nbarnes@tellusoperating.com">nbarnes@tellusoperating.com</a>	(601) 898-7444
<b>2nd Vice President</b>	Joe Johnson	Tellus Operating	<a href="mailto:jjohnson@tellusoperating.com">jjohnson@tellusoperating.com</a>	(601) 898-7444
<b>Secretary</b>	Todd Hines	Moon-Hines	<a href="mailto:thines1360@aol.com">thines1360@aol.com</a>	(601) 572-8300
<b>Treasurer</b>	Bill Bagnall	BLM	<a href="mailto:wbagnall@blm.gov">wbagnall@blm.gov</a>	(601)-977-5417
<b>Webmaster</b>	Steve Walkinshaw	Vision Exploration	<a href="mailto:steve@visionexploration.com">steve@visionexploration.com</a>	(601) 607-3227
<b>Advertising</b>	Matt Caton	Tellus Operating	<a href="mailto:mcaton@tellusoperating.com">mcaton@tellusoperating.com</a>	(601) 898-7444
<b>Editor</b>	Matt Caton	Tellus Operating	<a href="mailto:mgs@treetop.us.com">mgs@treetop.us.com</a>	(601) 898-7444

## *Boland Scholarship*

<b>President</b>	Neil Barnes	Tellus Operating	(601) 898-7444
<b>Secretary</b>	Dave Cate	Pruet Oil	(601) 948-5279
<b>Members</b>	Ray Lewand		
	Tony Stuart	Venture Oil & Gas	(601) 428-7725
	James Starnes	DEQ	
	Bob Schneeflock	Geodigital Consulting	(601) 853-0701

## *Honorary Membership*

<b>Chairman</b>	Charles H. Williams, Jr. Vaughey & Vaughey		(601) 982-1212
<b>Members</b>	Dudley J. Hughes	Hughes South Corp.	(601) 420-9892
	E. Ralph Hines	Moon-Hines	(601) 572-8300
	Jerry Zoble	Independent	

## *MGS Representatives*

<b>AAPG</b>	Maurice Birdwell	Independent	(601) 936-6939
<b>GCAGS</b>	Danny Harrelson	U.S. Army R&D	(601) 634-2685

## *Other*

<b>Environmental</b>	Ken Ruckstuhl	Environmental Mgt.	(601) 992-8233
<b>Historian</b>	Stanley King	Independent	(601) 842-3539



# PRESIDENT'S LETTER

*Jim Files*

Hello fellow members!

For me, the routine is always the same every morning. I let Blue, my border collie out. What I have in mind and he has in mind differ greatly. He goes "hunting". His favorite prey are birds. Lucky for them, they fly. He starts with, if available, the Great Herons. Next he attacks the smaller, ducks and mocking birds, while neither cooperate. If desperate, he goes for a sparrow. Each morning, I get to the office and also begin the "hunt", but this time for oil and gas. We all in this business prefer the "Great Herons", but in the end are only too happy to capture the lone "sparrow".



I hope you are present for the meeting this week. I look forward to being "re-schooled" in seismic reprocessing. A lot of data comes to mind that I have seen that needs a redo.

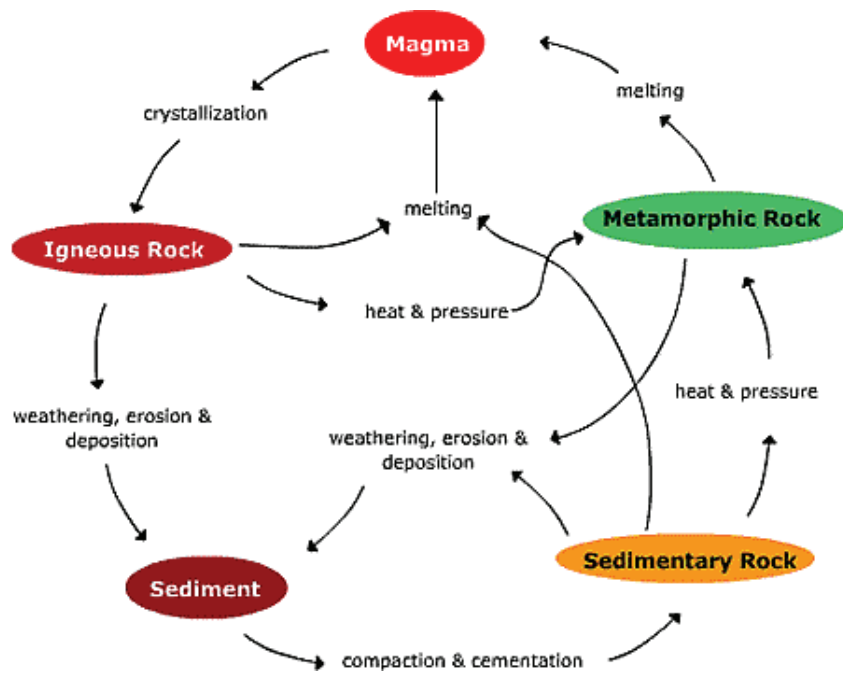
I look forward to seeing you on Thursday!

Best Regards,

Jim Files

# MGS MEETING SCHEDULE

When	What/Who	Where
September 13, 2012	Fall BBQ	Jackson Yacht Club-5:30pm
October 4, 2012	Steve Walkinshaw The Lower Brown Dense Lime Trend	River Hills – 11:30am
November 8, 2012	<b>Morgan Brown</b> Prestack Depth Migration for “Easy” Onshore Plays	River Hills – 11:30am
TBD	Christmas Party and Dance	Colonial Country Club
January 10, 2013	TBD	River Hills – 11:30am
February 14, 2013	Kirk Barrell Tuscaloosa Marine Shale	River Hills – 11:30am
March 14, 2013	TBD	River Hills – 11:30am
April 11, 2013	Boland Scholarship Awards	River Hills – 11:30am
May 9, 2013	Spring Fling	Jackson Yacht Club– 5:30pm



## OFFICERS MEETINGS

August 4, 2012

September 6, 2012

September 27, 2012

November 1, 2012

December 6, 2012

January 3, 2013

February 7, 2013

March 7, 2013

April 4, 2013

May 2, 2013



# NOVEMBER SPEAKER

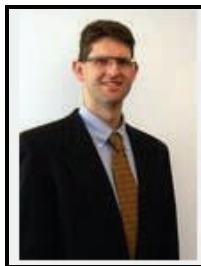
*Morgan Brown*

## **Prestack Depth Migration for "Easy" Onshore Plays?**

Abstract:

Traditionally, prestack depth migration (PSDM) was considered an exotic technology, applicable only for imaging "complex" geology. Offshore subsalt imaging drives the use of the most advanced PSDM technologies, like Reverse-Time depth Migration (RTM). However, given the recent resurgence of onshore exploration, we ask: can PSDM make an impact on "easy" onshore plays? We present an unconventional oil shale (Niobrara) case study which convincingly illustrates three key reasons for (re)considering PSDM:

- 1) Remove false time structures caused by lateral variations in velocity.
- 2) Improve focusing of dipping beds and faults.
- 3) Improve the accuracy of seismic attributes



Morgan Brown is CEO of Wave Imaging Technology Inc., a specialty seismic processing company leading the onshore depth imaging trend. Brown worked in Geophysical R&D positions for Hess and 3DGeo before joining WIT. He holds a B.A. in applied math from Rice University and a Ph.D. in geophysics from Stanford University. He has 15 years of experience in depth imaging.





# BOLAND SCHOLARSHIP WATCH

Faculty & Students,

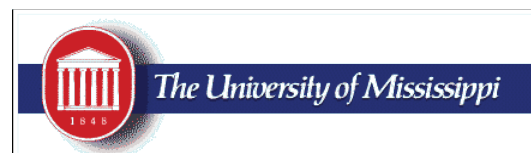
This is a new year and the Mississippi Geological Society along with the Boland Scholarship Fund would like to remind you that we want to honor the most outstanding overall students for the 2012-2013 year.

Each year, the Boland Scholarship awards 1 student from each institution a check that rewards students for their hard work and dedication to the Geosciences and their community.

We look forward to a great year and hope to see you at our monthly meetings.

Best Regards,

Matt Caton  
Editor



THE UNIVERSITY OF  
SOUTHERN  
MISSISSIPPI

MILLSAPS  
COLLEGE



# **BOLAND SCHOLARSHIP DONATIONS**

**MGS would like to thank the following individuals for their generous donations to the Boland Scholarship Fund.**

**Maurice Birdwell**

**Ken McCarley**

**George Smith**

**Maurice Meylan**

**Terry Bryant**

**Jim Michael**

**Chris Franks**

**Meade Hufford**

**If you would like to make a donation please see Bill Bagnall at the monthly meetings, or you can send your contribution to the following address:**

**Mississippi Geological Society  
PO BOX 422  
Jackson, MS 39205-0422**



## ARTICLE OF THE MONTH

### *Why Not a “Lewis & Clark Project” for Energy?*

Many people would be surprised to know that regarding our "frontier" regions, those outside of the traditional oil and gas production areas of the Gulf of Mexico, southern offshore California, and onshore continental US, we have precious little actual geological and seismic data to precisely estimate the extent of our resource base.

Although, the U.S. Geological Survey, a scientific bureau within the United States Department of Interior, does a remarkable job assessing domestic energy resources, much of its analysis and assessment is based upon scant, decades old data that possesses a high degree of uncertainty.

The complicated scheme of describing our estimated resource base combines statistical assessment, technological capability, and the economics of production only to baffle the public and confuse government officials tasked to divine an energy strategy.

If we are going to make sound decisions about our energy future, we sorely need credible, scientifically reliable data about the country's resource base. The data gathering should not only include oil & gas, but also coal, uranium, water, wind, and geothermal resources.

That's why Governor Romney's proposal to conduct a comprehensive survey of America's energy reserves makes so much sense. It should be promoted as a "Lewis and Clark Project" to gather much needed technical information about what lies beneath our onshore and offshore property.

In the closing days of the 18th century, Napoleon Bonaparte began maneuvering to restore France's territories in North America. By late 1802, Spain transferred its territory west of the Mississippi along with the shipping rights through New Orleans back to France. American access to the port's warehouses became a critical commercial issue for the United States.

In 1803, President Thomas Jefferson dispatched Secretary of State, James Madison, to join U.S. Minister to France, Robert Livingston, in negotiations to purchase New Orleans along with all or part of Florida. Their ultimate objective was to secure U.S. rights to access the Mississippi River and the port. They were authorized \$10 million for the purchase.

As conditions changed and war with the British appeared likely, Napoleon reconsidered France's place on the continent. When Madison arrived in France in April, 1803, the deal the French presented was for the sale of all of Louisiana – 827,000 squares miles, twice the area of the U.S. Although taken aback, by April 30th, Madison and Livingston reached an agreement to purchase the Louisiana territory, including New Orleans, for \$15 million — well in excess of the initial authorization.





## ARTICLE Cont

The official announcement of the Louisiana Purchase was made in Washington on July 4, 1803. The Senate ratified the treaty sale on October 20th and the U.S. took formal possession of the territory in December, 1803.

What is most fascinating, however, is the fact that in January, 1803, before he even knew how the French would react to Madison's mission, Jefferson was preparing for the future. In a confidential letter to Congress, dated January 18, 1803, Jefferson requested an appropriation of funds for the exploration of the continent "for the purpose of extending the external commerce of the United States" and to "incidentally advance the geographical knowledge of our own continent." That letter secured \$2,500 from Congress to cover the costs of the venture we now know as the, "Lewis & Clark Expedition."

Modern parallels can be drawn between the Lewis & Clark Expedition and our current need to survey our energy resources today. As in the early 1800's, we have a notional understanding of our frontier regions. We are in the early stages of assessing those resources, especially regarding federal offshore properties. Development and production in most of these regions is many years, if not decades, away. However, paraphrasing Mr. Jefferson's letter to Congress, today we must "advance the geologic knowledge of our own continent."

A "Lewis and Clark Project" managed by the USGS to evaluate our nation's energy resources is long overdue. If we are going to address our energy situation and craft a rational energy policy, we need to have reliable information about our options. This includes credible data about our energy resource base: oil, gas, coal, uranium, geothermal, water, and wind. Putting off this important survey program will not only delay our ability to access these resources when we need them, but also drive up the cost because the risks associated with investments made on highly uncertain assessments is greater than those made on high quality assessments. Likewise, revenues to the government generated from bids on federal production leases would likely be higher if bidders had better knowledge about what the lease may contain.

The "Lewis and Clark Project" may also assist in determining where we should not proceed with energy development. For example, a National Marine Sanctuary System with 14 established sanctuaries exists today. Geologic and seismic data collection from "Lewis and Clark" could be coordinated in partnership with ongoing NOAA activities surveying met ocean and benthic environments to identify highly sensitive areas or support protective zones to avoid or mitigate impacts from possible future development activities. Understanding where and how to develop resources is as important as knowing what lies below the surface.

An initiative such as the "Lewis and Clark Project" should be something everyone can agree to support. This country faces tremendous challenges in deciding how to pursue energy development. A rational, well-conceived energy policy is long overdue. Adding to our knowledge in order to guide sound policy decisions should be a bipartisan priority.

*John Hritcko, Jr., is a Houston-based engineer and natural gas industry executive. This column originally appeared on his blog, ["Bridge to the Energy Future."](#)*



# CURRENT PRICES

NYMEX Crude Oil Futures  
Close ( Front Month )



NYMEX Natural Gas Futures  
Close (Front Month)



## Future Meetings of Selected Earth Science Organizations

EVENT	2011	2012	2013	2014	2015
AAPG Annual Convention & Exhibition (ACE)	10–13 April Houston, TX	22–25 April Long Beach, CA	19–22 May Pittsburgh, PA	6–9 April Houston, TX	31 May–3 June Denver, CO
AAPG International Conference & Exhibition (ICE)	23–26 October Milan, Italy	September Singapore	8–11 September Cartagena, Colombia		
AAPG Prospect & Property Expo-London (APPEX)	1–3 March London, UK	6–8 March London, UK			
AAPG Annual Leadership Conference	12–14 August Boulder, CO				
AAPG Foundation Trustee Associates	7–11 September Lake Tahoe, CA	28 Oct–1 Nov Scottsdale, AZ			
AAPG European Region Conference					
AAPG Eastern Section	25–27 September Washington, D.C.	22–26 September Cleveland, OH			
AAPG Gulf Coast Section (GCAGS)	16–19 October Veracruz, Mexico	21–23 October Austin, TX	Sept–Oct TBD New Orleans, LA	Sept–Oct TBD Lafayette, LA	Sept–Oct TBD Houston, TX
AAPG Mid-Continent Section	1–4 October Oklahoma City, OK				
AAPG Pacific Section	9–11 May Anchorage, AK	22–25 April Long Beach, CA			
AAPG Rocky Mountain Section (RMS)	26–29 June Cheyenne, WY	9–12 September Grand Junction, CO	TBD Salt Lake City, UT	TBD Denver, CO	
AAPG Southwest Section	5–7 June Ruidoso, NM	19–22 May Ft. Worth, TX			
AAPG Polar Petroleum Potential (3P)	30 Aug–2 Sept Halifax, Nova Scotia				
American Association of Petroleum Landmen (AAPL) Annual Meeting	8–11 June Boston, MA				
Arctic Technology Conference (OTC) <i>New!</i>	7–9 February Houston, TX	3–5 December Houston, TX			
Asia Pacific Oil & Gas Conference (SPE)	20–22 September Jakarta, Indonesia	22–24 October Perth, Australia			
Association of Environmental & Engineering Geologists (AEG)	19–24 September Anchorage, AK	TBD Salt Lake City, UT	TBD Seattle, WA		
Canadian Society of Petroleum Geologists (CSPG), Canadian Society of Exploration Geoscientists (CSEG), & Canadian Well Logging Society (CWLS)	9–13 May Calgary, AB, Canada				
European Assoc. of Geoscientists and Engineers (EAGE)	23–26 May Vienna, Austria	4–7 June Copenhagen, Denmark	9–14 June London, UK		
GEO India — South Asian Geosciences Conference & Exhibition	12–14 January New Delhi, India	Not Held			
GEO Middle East Geosciences Conference and Exhibition	Not Held	4–7 March Bahrain	Not Held		
Geological Assoc. of Canada/ Mineralogical Assoc. of Canada Annual Meeting	25–27 May Ottawa, ON, Canada	27–29 May St. John's, NL, Canada	22–24 May Winnipeg, MB, Canada		
Geological Society of America (GSA)	9–12 October Minneapolis, MN	4–7 November Charlotte, NC	27–30 October Denver, CO		
IPTC – International Petroleum Technology Conference (AAPG/EAGE/SEG/SPE)	15–17 November Bangkok, Thailand	5–7 December Beijing, China	2–4 December Doha, Qatar	TBD Kuala Lumpur, Malaysia	
National Association of Black Geologists & Geophysicist (NABGG)	7–10 September San Francisco, CA				
NAPE – North American Prospect Expo (AAPL) – Winter	16–18 February Houston, TX	22–24 February Houston, TX			
NAPE – North American Prospect Expo (AAPL) – Summer	17–19 August Houston, TX				
OTC – Offshore Technology Conference (SPE)	2–5 May Houston, TX	30 April–3 May Houston, TX	6–9 May Houston, TX	5–8 May Houston, TX	
PETEX (PESGB)	Not Held				
Society of Exploration Geophysicists (SEG)	18–23 September San Antonio, TX	4–9 November Las Vegas, NV	22–27 September Houston, TX	26–31 October Denver, CO	
Society of Independent Earth Scientists (SIPES)	20–23 June Jackson Hole, WY				
Society of Petroleum Engineers (SPE)	30 Oct–2 Nov Denver, CO	8–10 October San Antonio, TX	30 Sept–2 Oct New Orleans, LA		
Society of Professional Well Log Analysts (SPWLA)	14–18 May Colorado Springs, CO				

Shaded boxes indicate that all aspects of meeting are managed by the American Association of Petroleum Geologists  
Global Development and Conventions Department  
P.O. Box 979, Tulsa, Oklahoma 74101-0979 USA +1 918 560 2679  
Updated 14 July 2011 / Dates are subject to change

# GEO LINK POST

**USGS TAPESTRY OF TIME AND TERRAIN** <http://tapestry.usgs.gov> The CCGS is donating to all of the 5th and 6th grade schools in the Coastal Bend. Check it out—it is a spectacular map. You might want a framed one for your own office. The one in my office has glass and a metal frame, and it cost \$400 and it does not look as good as the ones we are giving to the schools. Call Owen 510-6224 if you want one for your office for \$150. Duncan, Mike, Chris, Dave, Bob Randy, Seb., Kevin, Ken, Craig, Patrick, Robert.

**FREE TEXAS TOPO'S** <http://www.tnris.state.tx.us/digital.htm> these are TIFF files from your state government that can be downloaded and printed. You can add them to SMT by converting them first in Globalmapper. Other digital data as well.

**FREE NATIONAL TOPO'S** [http://store.usgs.gov/b2c\\_usgs/b2c/start/\(xcm=r3standardpitrex\\_prd\)/.do](http://store.usgs.gov/b2c_usgs/b2c/start/(xcm=r3standardpitrex_prd)/.do) go to this webpage and look on the extreme right side to the box titled TOPO MAPS DOWNLOAD TOPO MAPS FREE.

<http://www.geographynetwork.com/> Go here and try their top 5 map services. My favorite is 'USGS Elevation Date.' Zoom in on your favorite places and see great shaded relief images. One of my favorites is the Great Sand Dunes National Park in south central Colorado. Nice Dunes.

<http://antwrp.gsfc.nasa.gov/apod/astropix.html> Astronomy picture of the day — awesome. I click this page everyday.

<http://www.spacimaging.com/gallery/ioweek/iow.htm> Amazing satellite images. Check out the gallery.

<http://www.ngdc.noaa.gov/seg/topo/globegal.shtml> More great maps to share with kids and students.

[www.geo.org](http://www.geo.org) Don't forget we have our own web page.

<http://micro.magneet.fsu.edu/primer/java/scienceoptiscu/owersof10/>

<http://asterweb.jpl.nasa.gov/galery/default.htm> Great satellite images of volcanoes

<http://terra.nasa.gov/gallery/> More here

[www.ermapper.com](http://www.ermapper.com) They have a great free downloadable viewer for TIFF and other graphic files called ER Viewer.

[www.drillinginfo.com](http://www.drillinginfo.com) This is an incredible (subscription) well and completion data service for independents. Can be demo'ed for free.

<http://terrasrver.com/> Go here to download free aerial photo images that can be plotted under your digital land and well data. Images down to 1 meter resolution, searchable by Lat Long coordinate. Useful for resolving well location questions.

<http://www.fs.fed.us/gpnf/volcanocams/msh/> This is a live cam of Mt. St. Helens refreshed every 5 minutes. At the bottom are old videos of past eruptions in this cycle. It is worth a watch especially now.



# GEOLOGY POST

## ARTICLES, PAPERS or NEWS?

**ATTENTION!!!!!!** Industry, Professors and Students:

We would like to add a dedicated section that includes more content from the industry and our schools.

Submissions can include anything from professional papers, thesis abstracts, job opportunities to pictures. Anything!!!!

If you have any information or news you would like to share with the Society **PLEASE** email them to the MGS Editor at:

[mcaton@tellusoperating.com](mailto:mcaton@tellusoperating.com)

Thanks & Regards,

Matt Caton  
Editor



# MGS HONORARY MEMBERS

**Esther Applin\***

**Verne Culbertson \***

**David C. Harrell\***

**Dudley J. Hughes**

**Walter P. Jones\***

**Winnie McGlammery\***

**Maurice E. Miesse\***

**Marvin E. Norman\***

**Thurston Connell Rader\***

**Henry Toler\***

**Charles H. Williams**

**David Cate**

**Paul Applin\***

**H. Leroy Francis\***

**Oleta R. Harrell\***

**Urban B. Hughes\***

**Harold Karges\***

**Thomas McGlothin\***

**Emil Monsour\***

**Marvin L. Oxley\***

**Baxter Smith\***

**H. Vaughn Watkins**

**Jerry Zoble**

**Lawrence F. Boland\***

**Jim Furrh\***

**Ralph Hines**

**Wendell B. Johnson \***

**Wilbur H. Knight\***

**Frederic F. Mellen\***

**William H. Moore\***

**Richard R. Priddy\***

**Harry V. Spooner**

**Stewart W. Welch\***

**Julius Ridgeway**

**\* deceased**

**MEMBERSHIP APPLICATION / RENEWAL FORM**

**MISSISSIPPI GEOLOGICAL SOCIETY**

**P.O. BOX 422, JACKSON, MISSISSIPPI 39205-0422**

**2012-2013**

Membership year is June through May

New Membership (\$20/yr)\_\_\_\_\_ Renewal (\$20/yr)\_\_\_\_\_ Student (FREE)\_\_\_\_\_ Associate (\$20/yr)\_\_\_\_\_

Boland Scholarship Fund Donation \$ \_\_\_\_\_ Total Amount Enclosed \$ \_\_\_\_\_

Last Name: \_\_\_\_\_ First: \_\_\_\_\_ MI: \_\_\_\_\_

Mailing Address: \_\_\_\_\_

Office Phone: \_\_\_\_\_ Home Phone: \_\_\_\_\_ FAX: \_\_\_\_\_

E-mail Address: \_\_\_\_\_

College/University Attended: \_\_\_\_\_

Degree(s) Obtained and Year(s) Awarded: \_\_\_\_\_

Professional Associations, Certifications, & Licenses: \_\_\_\_\_



# 2012-2013 MGS MEMBERS

John Ables	Ken Adams
O Bill Bagnall	Larry Baria
O Neil Barnes	Randy Bissell
Maurice Birdwell	Terry Bryant
Robert Branson	Alvin Byrd
O Matt Caton	Dave Cate
Sara Davis	Phil Cook
Dave Easom	Chris Franks
O Jim Files	Bob Gaston
O Todd Hines	David Handcock
O Joe Johnson	Bernard Holman
James Landrem	Joe McDuff
Ken McCarley	Phillip Meadows
Shawn Pool	Bob McElroy
Philip Reeves	Maurice Meylan
Bob Schneeflock	James Michael
Howard Samsel	Jack Moody
Don Smith	Charlie Morrison
George Smith	Jim Nix
Jim Stephens	James Norris
John Sullivan	Billy Powell
Tom Sylte	Thomas Seitz
Mike Taylor	George Self
Sid Thompson	Jimmy Sparks
Steve Walkinshaw	Tony Stuart
Johnny Holifield	Stan Thieling
Joe White	

\*This list is updated on a monthly basis.



## MGS ADVERTISING ORDER FORM

September 2012 – May 2013

### I. Bulletin Advertisements:

<u>Size</u>	<u>Rate/Year</u>	<u>Amt. Remitted</u>
Full Page Ad (6" x 8")	\$500	\$ _____
1/2 Page Ad (6" x 4")	\$300	\$ _____
1/4 Page Ad (3" x 4")	\$200	\$ _____
Business Card Ad (1 1/2" x 3")	\$100	\$ _____
Professional Listing (1/2" x 3")	\$ 50	\$ _____

### II. Web Page Advertisements (www.missgeo.com):

<u>Type of Web Page Ad</u>	<u>Rate/Year</u>	<u>Amt. Remitted</u>
Front Page Sponsor (Banner Ad – limit of 5)	\$500	\$ _____
Second Page Banner Ad	\$250	\$ _____
Professional Listing/Link	\$100	\$ _____

(Note: Please contact Steve Walkinshaw at (601) 607-3227 or mail@visionexploration.com for details concerning placing your ad on the MGS web site.)

**Total Remitted** \$ \_\_\_\_\_

Please make checks payable to the Mississippi Geological Society. If you have any questions, contact Matt Caton at (601) 898-7444 or mcaton@tellusoperating.com





# ENERGY DRILLING COMPANY <sup>®</sup>

CONTRACT DRILLING 3000 – 15,000 FEET  
MS-AL-FL-ARK-LA-TEX

Pat Burns, Jr.

Jody Helbling

Nestor Navarro

601-446-5259

(Fax)601-446-8607

P. O. Box 905

413 Liberty Rd.

Natchez, MS 39121



OPERATING GROUP, LLC

## **OPERATING GROUP, LLC**

**602 Crescent Place, Suite 100**

**Ridgeland, MS 39157**

**601-898-7444 Voice**

**601-898-7446 Fax**

**BRIAN SIMS**

**EXPLOITATION GEOLOGIC MANAGER**

Email: [bsims@tellusoperating.com](mailto:bsims@tellusoperating.com)

# OWLCO

Oil Well Logging Company  
P. O. Box 1692  
Madison, MS 39130  
(601) 477-8315



**MOCO INC.**  
The Mississippi Oil Company

MICHAEL L. BLACKWELL  
H. DON NOBLITT

603 Northpark Drive • Ridgeland, MS 39157  
(601) 957-3550



**Karl J. Kaufmann**  
*President*

Suite B  
546 Keyway Drive  
Jackson, MS 39232

601-936-3601  
Fax 601-936-3646  
coukauf@aol.com

**BLAIR & BONDURANT, P.A.**  
ATTORNEYS AT LAW

WILLIAM F. BLAIR

P.O. Box 321423      1368 Old Fannin Road  
Jackson, MS 39232      Suite 300  
Telephone: (601) 992-4477      Brandon, MS 39047  
Telecopier: (601) 992-9189      Email:



**TROPHY  
PETROLEUM  
CORPORATION**

100 N. Van Buren Street  
Post Office Box 415  
Carthage, MS 39051  
(601) 298-0200 (601) 298-0201 Fax

E. Wayne Upchurch  
President



**John G. Cox**  
Geologist

603 Northpark Drive, Suite 300      601.978.1763  
Ridgeland, Mississippi 39157      fax 601.952.0425  
john\_cox@bellsouth.net

# BRUXOIL, INC.

DAVID K. BROOKS - PRESIDENT  
RAYMOND A. HELFRICH - VICE PRESIDENT  
DOROTHY M. JAUBERT

P. O. Box 16929  
Jackson, MS 39236  
(601) 981-5722  
FAX: (601) 366-9490



**ROUNDTREE & ASSOCIATES, INC.**  
OIL AND GAS PRODUCTION  
210 Trace Colony Park Drive,  
Ridgeland, MS 39157  
Phone (601) 355-4530

**MOON & HINES**  
OIL & GAS EXPLORATION

**MOON-HINES-TIGRETT OPERATING CO., INC.**  
PROPERTY MANAGEMENT

P O BOX 3216  
RIDGELAND, MS 39158

OFFICE (601) 572-8300      FAX (601) 572-8310



**KELTON OPERATING COMPANY, INC.**  
since 1953

605 SUN TRUST TOWER  
220 W. GARDEN STREET  
PENSACOLA, FL 32501  
P.O. BOX 230  
PENSACOLA, FL 32591

TELEPHONE  
(850) 434-6830  
FACSIMILE  
(850) 434-6842

**Boone**  **Exploration, Inc.**

Lynn D. Boone  
*President*

J.C. Carlisle  
*Vice President*

21 Wire Road  
P.O. Box 8660  
Huntsville, TX 77340

Phone: 936-295-4066  
Fax: 936-295-4042  
Email: jcc9551@aol.com

**Energy Land Services**

Oil & Gas Leases

**I. Meade Hufford, CPL**

Owner

P. O. Box 302  
144 Wharton Grove Ln  
Weems, VA 22576

Phone: 804-438-5852  
Fax: 804-438-9043  
Cell: 713-705-7235  
hufford1913@aol.com

**JULIUS M. RIDGWAY**

**COASTAL EXPLORATION, INC.**

1437 OLD SQUARE ROAD, #104  
JACKSON, MISSISSIPPI 39211

601-362-0502  
FAX: 601-362-5397

**SPOONER PETROLEUM COMPANY**

210 East Capitol St., Suite 956  
Jackson, Mississippi 39201

**Oil & Gas Production & Exploration  
Contract Operations**

601-969-1831

**JAMES B. FURRH, Jr., Inc.**

*Oil & Gas Exploration*

4450 Old Canton Road, Suite 205,  
Jackson, MS 39211  
Phone (601) 982-9393 Fax (601) 982-9785

**E. GEOFFREY JEFFREYS**

*Petroleum Consultant*

**OIL, GAS AND MINERAL APPRAISALS**

115 Fairway Drive  
Daphne, AL 36526  
egjeffreys@aol.com

Off (251) 621-1850  
Fx (251) 621-1630  
Cell (251) 709-7919

**Bryant Miller**

1837 Peachtree Street  
Jackson, MS 39202

bryantgmiller@bryantgmiller.com

**ENERGEN**  
RESOURCES

**President & COO**

**John Richardson**

**Senior Vice President**

**Operations**

**Paul Sparks**

**General Manager**

**Acquisitions & Engineering**

**Gene Cash**

**General Manager**

**Geology**

**Ron Tisdale**

**General Manager**

**Land**

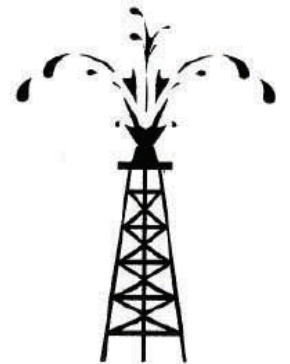
**Paul Rote**

**(205)326-2721**

**Joseph H. McDuff**  
Geologist

351 Chapel Loop  
Mandeville, LA 70471  
985.845.9430

jhmcduff@charter.net



**Diversified Land  
Management, Inc.**

**PERMIT ACQUISITION  
SPECIALISTS**

**Jack Tate**

President

Office: 337.886.0060

Fax: 337.886.0064

Cell: 601.259.1366

email: geoagent46@aol.com

dlimonline.com

"A company committed to excellence and achieving success while providing professional permitting acq. & project mngt. with the client's interests & concerns top priority"

# Get More



# from your Core

With reservoirs becoming increasingly complex, you need the most accurate information you can get to better understand your reservoir.

Weatherford Labs helps you get more from your core by combining an unsurpassed global team of geoscientists, engineers, technicians and researchers with the industry's most comprehensive, integrated laboratory services worldwide. From core analysis, sorption, geochemistry and isotopic composition to detailed basin modeling and comprehensive data packages, we provide you with real reservoir rock and fluid information that hasn't been distilled by a simulator or iterated by software.

We call it "The Ground Truth™" – giving you the accurate answers you need for better reservoir understanding. You'll call it a better return on your reservoir investment. To learn more, contact [TheGroundTruth@weatherfordlabs.com](mailto:TheGroundTruth@weatherfordlabs.com).



**Weatherford**  
LABORATORIES  
[weatherfordlabs.com](http://weatherfordlabs.com)

© 2011 Weatherford. All rights reserved. Trade names proprietary and patented Weatherford technology.

**Denbury**

5320 Legacy Drive  
Plano, TX 75024

**Denbury Resources, Inc.**

*Denbury Resources, Inc. is a growing independent oil and gas company. The Company is the largest oil and natural gas operator in Mississippi and Montana, owns the largest reserves of CO<sub>2</sub> used for tertiary oil recovery east of the Mississippi River, and holds significant operating acreage in the Rockies, Permian Basin, Mid-Continent and Gulf Coast. The Company's goal is to increase the value of acquired properties through a combination of exploration, drilling and proven engineering extraction practices, with its most significant emphasis relating to tertiary recovery operations.*

NYSE: DNR  
[www.denbury.com](http://www.denbury.com)

Denbury Resources Inc.

**BRANCHING  
OUT**



# MGS PAST PRESIDENTS

1939-1940	Henry N. Toler	1973-1974	Larry Walter
1940-1941	Urban B. Hughes	1974-1975	W. E. "Gene" Taylor
1941-1942	J. Tom McGlothlin	1975-1976	Jerry E. Zoble
1942-1943	Dave C. Harrell	1976-1977	P. David Cate
1943-1944	K. K. "Bob" Spooner	1977-1978	Sarah Childress
1944-1945	L. R. McFarland	1978-1979	Les Aultman
1945-1946	J. B. Story	1979-1980	Philip R. Reeves
1946-1947	Frederic F. Mellen	1980-1981	Marshall Kern
1947-1948	H. Lee Spyles	1981-1982	Stephen Oivanki
	Robert D. Sprague	1982- 1983	James W. "Buddy" Twiner
1948-1949	Robert D. Sprague	1983- 1984	Charles H. Williams
1949-1950	E. T. "Mike" Monsour	1984- 1985	C. Kip Ferns
1950-1951	J. Tate Clark	1985-1986	Steven S. Walkinshaw
	Charles E. Buck	1986-1987	J. R. "Bob" White
1951-1952	George W. Field	1987-1988	Harry Spooner
1952-1953	James L. Md11in, Jr.	1988-1989	Stanley King
1953-1954	Wilbur H. Knight	1989-1990	Stan Galicki
1954-1955	A. Ed Blanton	1990-1991	E. James Files, Jr.
1955-1956	Gilbert A. Talley	1991-1992	Stephen L. Ingram, Sr.
1956-1957	Ben Ploch	1992-1993	Michael Noone/Stanley King
1957-1958	Emil Monsour	1993-1994	Brian Sims
1958-1959	Charles Brown	1994-1995	C. W. "Neil" Barnes
1959-1960	M. F. Kirby	1995-1996	Lester Aultman
1960-1961	Rudy Ewing	1996-1997	Jack S. Moody
1961-1962	Xavier M. Franscogna	1997-1998	George B. Vockroth
1962-1963	Robert B. Ross	1998-1999	Rick L. Ericksen
1963-1964	William A. Skees	1999-2000	Stanley King
	Marvin Oxley	2000-2001	John C. Marble
1964-1965	James F. Bollman	2001-2002	Andrew T. Sylte
1965-1966	Sankey L. Blanton	2002-2003	Aaron Lasker
1966-1967	Alan Jackson	2003-2004	John G. Cox
1967-1968	Julius M. Ridgway	2004-2005	James E. Starnes
1968-1969	Edward D. Minihan	2005-2006	Todd Hines
1969-1970	Kevin E. Cahill	2006-2007	Bob Schneeflock
1970-1971	John Lancaster	2007-2008	Tony Stuart
1971-1972	Larry Boland	2008-2009	Lisa Ivshin
		2009-2010	Joe Johnson
		2010-2011	Brian Sims
		2011-2012	Stanley King