

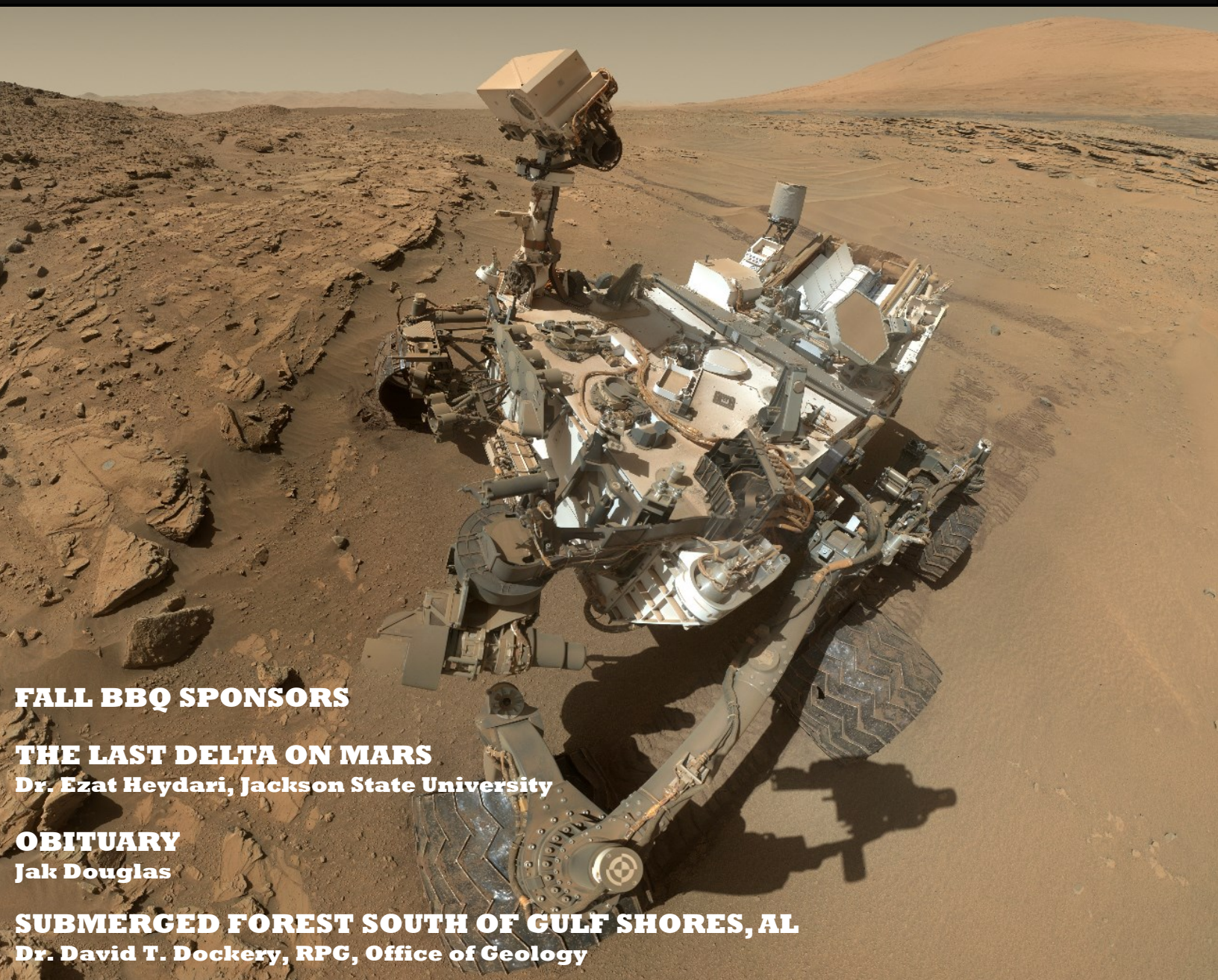
MISSISSIPPI GEOLOGICAL SOCIETY

# eBULLETIN

Volume 66

No. 2

October 2017



**FALL BBQ SPONSORS**

**THE LAST DELTA ON MARS**

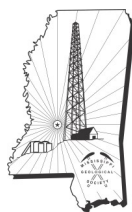
Dr. Ezat Heydari, Jackson State University

**OBITUARY**

Jak Douglas

**SUBMERGED FOREST SOUTH OF GULF SHORES, AL**

Dr. David T. Dockery, RPG, Office of Geology



[www.missgeo.com](http://www.missgeo.com)



# MGS 2017-2018 BOARD OF DIRECTORS

## *Officers*

<b>President</b>	David Hancock	Roundtree & Assoc.	<a href="mailto:david@roundtreeinc.com">david@roundtreeinc.com</a>	(601) 355-4530
<b>1st Vice President</b>	David Dockery	MDEQ	<a href="mailto:ddockery@mdeq.ms.gov">ddockery@mdeq.ms.gov</a>	(601) 961-5171
<b>2nd Vice President</b>	Joe Johnson	Spooner Petroleum	<a href="mailto:jjohnson@spoonercompanies.com">jjohnson@spoonercompanies.com</a>	(601) 969-1831
<b>Treasurer</b>	Bill Bagnall	BLM	<a href="mailto:wbagnall@blm.gov">wbagnall@blm.gov</a>	(601)-919-4651
<b>Webmaster</b>	Steve Walkinshaw	Vision Exploration	<a href="mailto:steve@visionexploration.com">steve@visionexploration.com</a>	(601) 607-3227
<b>Advertising</b>	Matt Caton	Tellus Operating	<a href="mailto:mcaton@tellusoperating.com">mcaton@tellusoperating.com</a>	(601) 898-7444
<b>Editor</b>	Matt Caton	Tellus Operating	<a href="mailto:mcaton@tellusoperating.com">mcaton@tellusoperating.com</a>	(601) 898-7444

## *Boland Scholarship*

<b>President</b>	David Dockery	MDEQ	(601) 355-4530
<b>Secretary</b>	Neil Barnes	Independant	
<b>Members</b>	Joe Johnson	Spooner Petroleum	(601) 969-1831
	Tony Stuart	Venture Oil & Gas	(601) 428-7725
	James Starnes	DEQ	
	Bob Schneeflock	Geodigital Consulting	(601) 853-0701
	Dave Cate	Pruet Oil	

## *Honorary Membership*

<b>Chairman</b>	Charles H. Williams, Jr.	Vaughey & Vaughey	(601) 982-1212
<b>Members</b>	E. Ralph Hines	Moon-Hines	(601) 572-8300
	Jerry Zoble	Independent	

## *MGS Representatives*

<b>AAPG</b>	Maurice Birdwell	Independent	(601) 936-6939
<b>GCAGS</b>	Danny Harrelson	U.S. Army R&D	(601) 634-2685

## *Other*

<b>Environmental</b>	John Ryan	Allen	(601) 936-4440
<b>Historian</b>	Stanley King	Independent	(601) 842-3539





# PRESIDENT'S LETTER

*David Hancock*



From all reports the fall Bar-B-Q was a success with the best attendance we've had in a while. Thanks to all who attended. Good participation in MGS sponsored events and meetings is essential to maintain the health of our Society.

This month we have the marvelous Ezat Heydari speaking to us. He will update us on his Mars research and the latest developments on the rover Curiosity. The title of his talk/paper is "The Last Delta on Mars. It should be interesting.

Looking forward, we are in the process of firming up a speaking date with Ike Keifer. If you'll recall, he spoke to us a couple years ago on his take of the oil and gas industry. Ike is an expert on global energy matters and gives a view of our industry from 25,000'. He was fascinating and though some of his forward predictions were tough to hear, in hindsight he was spot on. It will be interesting to hear him again and get his updated view of what may be in our futures.

Your Society is attempting to become more involved in the community and your Board has recommended support of two local projects. As you recall last year, a presentation was made by Elena Turner concerning a historical marker in the Belhaven area commemorating the Jackson Dome. We will sponsor and have input into the wording of the marker. We also sponsored two \$100 awards for the Mississippi Academy of Science (Best Graduate and Best Undergraduate Papers). Showing support to worthwhile projects gives MGS a little visibility in the local and scientific communities and promotes our discipline.

I look forward to seeing each of you at the October meeting.

David

# 2017-2018 MGS MEETING SCHEDULE

When	What/Who	Where
September 14, 2017	Fall BBQ	Jackson Yacht Club-5:30pm
<b>October 12, 2017</b>	<b>EZAT HEYDARI The Last Delta on Mars</b>	<b>River Hills – 11:30am</b>
November 9, 2017	TBD	River Hills – 11:30am
TBD	TBD	TBD
January 11, 2018	TBD	River Hills – 11:30am
February 8, 2018	TBD	River Hills – 11:30am
March 8, 2018	TBD	River Hills – 11:30am
April 12, 2018	Boland Scholarship Awards	River Hills – 11:30am
May 10, 2017	Spring Fling	Jackson Yacht Club– 5:30pm



## OFFICERS MEETINGS

September 12, 2017
<b>October 10, 2017</b>
November 7, 2017
January 9, 2018
February 6, 2018
March 6, 2018
April 10, 2018
May 8, 2018

# **Mississippi Geological Society**

## **2017 Fall Barbecue**

### **Sponsors**



#### **Gold Sponsors**


*Pruet Companies*  
*Spooner Companies*  
*Venture Oil & Gas*  
*Seismic Exchange*  
*Copeland, Cook, Taylor & Bush*  
*Blair & Bondurant*



#### **Silver Sponsors**

*Biggs, Ingram & Solop*  
*Roundtree & Associates*  
*Geokinetics*

#### **Bronze Sponsors**



*Boone Exploration*  
*Coastal Exploration*  
*Plains Marketing*  
*Brunini*  
*Marlin Exploration*  
*Weatherford Labs*





## **MGS OCTOBER SPEAKER**

*Dr. Ezat Heydari*



Dr. Ezat Heydari is a Full Professor at Jackson State University (JSU). He received his Ph.D. degree from Louisiana State University (LSU) in 1990, his Master's Science degree from Penn State University in 1982, and Bachelor of Science from the University of Tehran, Iran, in 1976. He specializes in sedimentology, stratigraphy, petrography, and low temperature geochemistry. Prior to joining JSU, he worked as a Research Associate and Research Professor at LSU (1990 - 1999), and as an Administrator with the Mississippi Office of Geology (1999-2001). He entered JSU in 2001 at the rank of Assistant Professor, promoted to Associate Professor in 2006, and to Full Professor in 2012. He established a comprehensive, quality, Geoscience degree program at JSU. It is the second such program among Historically Black Colleges and Universities.

Heydari is an active researcher. He has a wide range of interests some of which include the study of Gulf Coast strata, the global characteristics of Upper Permian and Lower Triassic layers, and aspects of oil and gas reservoirs. His most recent endeavor is the Geology of the planet Mars. He is the author of over 50 published research papers and over 80 conference presentations. He was Associated Editor of the Journal of Sedimentary Research (1997 – 2004), Guest Co-Editor of Special volume of Tectonophysics in 2008, and Guest Co-Editor of a Special Issue in Global and Planetary Change in 2010. He was a reviewer of several texts books including the first edition of the Environmental Geology Today, the third edition of Blue Planet, and the eighth edition of Physical Science. He has the honor of being is a member of science team with NASA's Curiosity Rover currently exploring Gale Crater, Mars.





# **MGS OCTOBER SPEAKER**

*Dr. Ezat Heydari*

**The Last Delta On Mars**

**Dr. Ezat Heydari**

Jackson State University

Jackson, MS

E-mail: [ezat.heydari@jsums.edu](mailto:ezat.heydari@jsums.edu)

Co-authors: F. J. Calef (JPL), J. Schroeder (JPL), J. Van Beek (MSSS), S. K. Rowland (Uni. Of Hawaii), A. G. Fairén (Cornel Univ.), and T. J. Parker (JPL), and B. Hallet (Univ. of Washington)

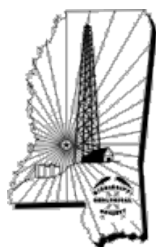
## **Abstract to be Presented at the GSA Annual Meeting 2017**

The Rugged Terrain Unit (RTU) is one of the four rocks units in the landing ellipse of the Curiosity rover in Gale crater, Mars. It is about 5 meters thick and extends from the foothills of Mt. Sharp to the northern edge of the crater. The RTU overlies all previously deposited strata suggesting that it consists of the youngest sedimentary rocks in the Curiosity rover's landing ellipse.

From north to south, the RTU was investigated at the following locations along the rover's traverse: the Cooperstown, Dingo Gap, Junda, Kylie, and Kimberley. The RTU forms cliffs up to 5 m thick in many of these localities limiting detailed contact science by the rover except for the Kimberley and Cooperstown exposures. However, all outcrops were imaged by the Curiosity rover's Mast Cameras.

The RTU consists of three members. Upward they are: the Dillinger, the Mt. Remarkable, and the Beagle (Treiman et al., 2016; Rice et al., 2017). Only the bottom two members are fully preserved. They are 1.5 m to 2.5 m thick each and display distinct variations in lithologies from south to north. Near the Kimberly locality both members consist of sandstone. Northward, each member displays a coarsening upward change pattern, starting with thin-bedded sandstone to siltstone at the base that grade upward into massive pebbly sandstone or conglomerate at the top. Occasional cross-bedding indicates flow direction from south to north (i.e., from Mt. Sharp toward the northern crater rim).

The coarsening upward stacking patterns are interpreted as prograding river deltas. Sandstone and siltstone layers at the base of coarsening upward successions were deposited in a subaqueous settings corresponding to delta front, prodelta, or basinal environments. The overlying massive, pebbly sandstone or conglomerate lithologies were most likely deposited as distributary mouth bars (DMBs) of streams that entered the lake. Coarsening upward patterns were not observed at the Kimberly because it was located in the upper delta regions dominated by fluvial sedimentation. This interpretation suggests a lake (100-200 m deep) existed in Gale crater during deposition of RTU. This lake was younger than the one previously reported by Grotzinger et al. (2015). No sedimentary rocks overly the RTU, possibly suggesting that Mars went cold and dry afterward and geological processes were halted.



# OBITUARY

## *Jak Douglas*



Marvin Luther "Jak" Douglas, age 74, of Pearl, MS, was drawn up into the arms of our glorious Lord and Savior on Sept. 16, 2017 after a courageous

battle with cancer. He made the admirable decision to donate his body to the University of Mississippi Medical Center to support the advancement of medical research and science. In lieu of a funeral service, his immediate family will host "A Celebration of Life" honoring him on Sat., Sept. 30, 2017 at the Spring Lake Venue in Country Place, 4 Country Place, Pearl, MS 39208. Please join us for lunch beginning at 11:30 A.M. until the time of service at 1:30 P.M.

He was born on July 8, 1943 in Memphis, TN to the late Marvin E. Douglas and Nettie June (Kimbrough) Douglas. He is survived by his wife of 53 years, Patsy Ella Porter Douglas, his daughter, Kimber Lane McDowell (Jonathan) and Michael Shane Douglas (Kim). His five beautiful grandchildren who dearly love and respect their Granddaddy are: Brennon Nicole and Robert Wayne McDowell, Michael Wesley, Jackson Brenden, and Levi Anding Douglas.

Jak was one of seven siblings: Helen Brownlee (Gene, deceased) of Whitehouse, TX, Vivian Mullins (Sam, deceased) of Milton, FL, Susan Pollock (Bill) of Canton, TX, Gary Kim Douglas (Elizabeth) of Ellisville, MS, Jerry Marlon Douglas (Cindy) of Milton, FL, and Barry Douglas of Canton, TX as well as numerous nieces, nephews, aunts, uncles and in-laws.

Jak's education and career as a geophysicist began at the early age of 15 while working for his father at Douglas Radiation Services; however, he received his formal education at Co-Lin Jr. College, Univ. of Southern Mississippi, and Southern Methodist University, all of which he remained dedicated to until his death. Around 1985, Jak formed Petrographic EXP which he solely owned and operated. He was privileged to be associated with and work for many individuals and companies throughout the oil and gas industry, all of which he had the utmost respect and gratitude.

Because of his passion for science, art, literature, theology, history, medicine, family and sports etc., Dad had an unquenchable thirst for knowledge...a thirst that continued until his last breath...he never stopped learning and sharing what he thought might be "useless facts."

He was a devoted husband, father, grandfather, brother, son, uncle, nephew and friend. Jak cherished spending time with his family and friends. We will miss his physical presence, his loving heart and his keen sense of humor that touched so many of our lives. God gives us the assurance that his body is restored in heaven and he will no longer feel the agony and fatigue of cancer and a worn out heart. He is pain free, standing tall and full of joy! What a sad but glorious day we celebrate!

Memorials may be made in honor of "Jak Douglas" to the Central Mississippi Down Syndrome Society (CMDSS), P.O. Box 935, Jackson, MS 39205 or Hope House of Hospitality, 786 E. Northside Drive, Jackson, MS 39206.





# MGS QUIZ

## Who is this prominent MGS member?

Hint\* Photo is from a Master's Thesis, taken in Independence Co., Arkansas in 1968.

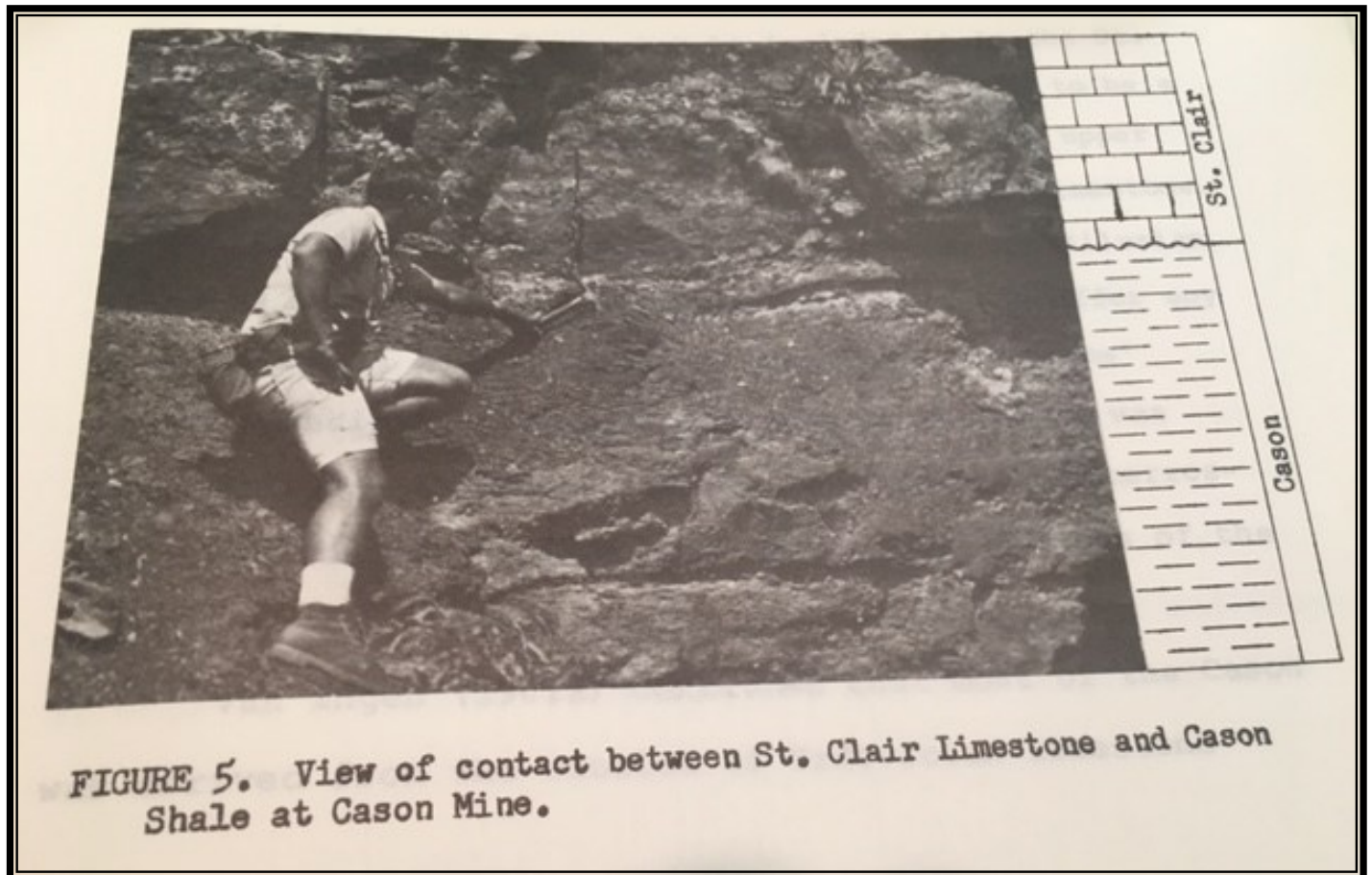


FIGURE 5. View of contact between St. Clair Limestone and Cason Shale at Cason Mine.



## MISSISSIPPI ACADEMY OF SCIENCES

### Geology & Geography Division

82<sup>nd</sup> Annual Meeting, 22–23 February 2018

### ***Call for Abstracts: Deadline 11/15/2017***

We are soliciting presentations on any earth science topic, including | geology, geography/GIS, paleontology, hydrology, meteorology, geological/geotechnical/environmental/water-resources engineering, and environmental science.

To submit, go to <http://msacad.org/submit-an-abstract/submit-on-line>

Come interact with your Mississippi geoscience colleagues!

*Cash awards (\$100 each) for best undergraduate and graduate student presentations,  
thanks to the generous support of the Mississippi Geological Society*



Questions? Contact Tyler Berry [tberry@mdeq.ms.gov](mailto:tberry@mdeq.ms.gov) or Andy O'Reilly [aoreilly@olemiss.edu](mailto:aoreilly@olemiss.edu)



## **MONTHLY POST**

***Dr. David T. Dockery III RPG***

### **SUBMERGED FOREST SOUTH OF GULF SHORES, ALABAMA**

David T. Dockery III, RPG, MDEQ Office of Geology

The stumps and logs of an ancient cypress forest lie ten miles off the Alabama coast south of the Fort Morgan peninsula. The tree trunks and stumps line the margin of an ancient Mobile-Tensaw Delta river channel. When first made known by fishermen shortly after Hurricane Katrina, the forest was thought to be 12,000 old when sea level was about 60 feet lower than today following the last (Wisconsinan) ice age (Raines, 2012).



Figure 1. Raising a tree log from the submerged forest off the Alabama coast. From Raines, 2017.





## **MONTHLY POST**

*Dr. David T. Dockery III RPG*



Figure 2. Collecting wood samples from Alabama's submerged forest. From Raines, 2017.

Later, when the wood was tested using the Accelerator Mass Spectrometer Radiocarbon Dating at the Lawrence Livermore National Laboratory, it was "radiocarbon dead," meaning the wood contained no detectable carbon 14 and for this reason was older than 50,000 years. Vibracores through sediments covering the buried forest taken by Louisiana State University were able to obtain wood samples with a radiocarbon age of 42,000 to 45,000 years, placing the ancient forest in the ballpark of 50,000 to 60,000 years. At this time, sea level was about 400 feet lower than today, and the shoreline was 30 to 60 miles further offshore. The cypress forest was on this now inundated zone some miles back of the shoreline, as cypress trees cannot tolerate saltwater. LSU paleoclimatologist Kristine DeLong placed the forest in a period called Marine Isotopic Stage 3, a time going into full glacial conditions but not quite there yet. The climate on the Gulf Coast at that time was colder and windier (Raines, 2017).





## MONTHLY POST

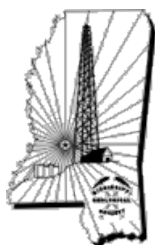
### *Dr. David T. Dockery III RPG*

Pollen analysis of the LSU cores indicated that the submerged forest was like that found today in the colder climate of North Carolina. The cores penetrated three feet of recent sand, then three feet of sand and marine clay, and then surprisingly into a perfectly preserved peat for about two feet. Pollen indicated the forest was a mix of cypress, alder, and oak, an assemblage like that of the Atlantic Coastal Plain Blackwater Levee/Bar Forest on the coasts of North and South Carolina.

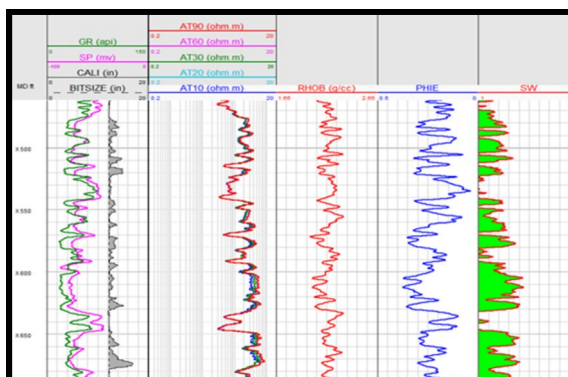
A study of the tree-ring chronology at the Dendron Lab of the University of Southern Mississippi by Grant Harley matched the chronologies of ten usable wood samples to create a floating composite chronology of 500 years. Some of the trees at the site were ten-feet in diameter and thirty feet in circumference. Pollen in the peat core showed the lower part dominated by tree pollen and the upper part to be dominated by grass pollen such as sedge. This sequence indicates that rising sea level, at a rate of some 75 feet per thousand years, killed the forest and buried it beneath marine muds. There it stayed for 50,000 years until excavated by the waves and currents created by Category 5 Hurricane Ivan when it crossed the Gulf of Mexico with up to 98-foot-tall waves (the largest ever measured) before making landfall in Gulf Shores, Alabama, as a Category 3 storm. At the time, Ivan set the world record of 33 six-hour periods of intensity at or above Category 4 strength. While in the Gulf, it had calculated eyewall wave heights of 131 feet.



Figure 3. Vibracore containing the peat deposit overlying the submerged forest. Ancient pollen in the peat shows a transition from forest at bottom of the core to marsh grasslands at the top. From Raines, 2017.



# LOG SEARCH



MGS Members,

Below is a list of well logs that our members are searching for. If you have this log, or know someone who might, please let me know.

Thanks & Regards,

Matt Caton

Editor

[mcaton@tellusoperating.com](mailto:mcaton@tellusoperating.com)

---

**DIPMETER**

**Texaco. Inc**

**Central Oil & Mineral Fee Unit 18-1**

**Smith County, MS**

**Sect. 18 T1N R9E**





# CURRENT PRICES

## Crude Oil - Electronic Nov 2017

[+ WATCHLIST](#)[CREATE ALERT](#)

☀ OPEN

Last Updated: Oct 10, 2017 at 9:56 a.m. EDT  
Delayed quote

\$ **50.63**

▲ 1.05 2.12%

SETTLEMENT PRICE 10/09/17

\$49.58



## Natural Gas - Electronic Nov 2017

[+ WATCHLIST](#)[CREATE ALERT](#)

☀ OPEN

Last Updated: Oct 10, 2017 9:54 a.m. EDT  
Delayed quote

\$ **2.876**

▲ 0.043 1.52%

SETTLEMENT PRICE 10/09/17

\$2.833





# BOLAND SCHOLARSHIP WATCH

Faculty & Students,

This is a new year and the Mississippi Geological Society along with the Boland Scholarship Fund would like to remind you that we want to honor the most outstanding overall students for the 2017-2018 year.

Each year, the Boland Scholarship awards 1 student from each institution a check that rewards students for their hard work and dedication to the Geosciences and their community.

We look forward to a great year and hope to see you at our monthly meetings.

Best Regards,

Matt Caton  
Editor



THE UNIVERSITY OF  
SOUTHERN  
MISSISSIPPI

MILLSAPS  
COLLEGE



# GEOLOGY POST

## ARTICLES, PAPERS or NEWS?

**ATTENTION!!!!!!** Industry, Professors and Students:

I am adding a dedicated section that includes more content from the industry and our schools.

Submissions can include anything from professional papers, thesis abstracts, job opportunities to pictures. Anything!!!!

If you have any information or news you would like to share with the Society **PLEASE** email them to the MGS Editor at:

[mcaton@tellusoperating.com](mailto:mcaton@tellusoperating.com)

Thanks & Regards,

Matt Caton  
Editor





# **2017-2018 BOLAND FUND DONATIONS**

**Maurice Birdwell  
Joe White  
Louis J Lyell  
Larry Baria  
Charlie Morrison  
Tony Stuart**

Thanks for your generous donations to the 2017-2018 Boland Fund

# GEO LINK POST

**USGS TAPESTRY OF TIME AND TERRAIN** <http://tapestry.usgs.gov> The CCGS is donating to all of the 5th and 6th grade schools in the Coastal Bend. Check it out—it is a spectacular map. You might want a framed one for your own office. The one in my office has glass and a metal frame, and it cost \$400 and it does not look as good as the ones we are giving to the schools. Call Owen 510-6224 if you want one for your office for \$150. Duncan, Mike, Chris, Dave, Bob Randy, Seb., Kevin, Ken, Craig, Patrick, Robert.

**FREE TEXAS TOPO'S** <http://www.tnris.state.tx.us/digital.htm> these are TIFF files from your state government that can be downloaded and printed. You can add them to SMT by converting them first in Globalmapper. Other digital data as well.

**FREE NATIONAL TOPO'S** [http://store.usgs.gov/b2c\\_usgs/b2c/start/\(xcm=r3standardpitrex\\_prd\)/.do](http://store.usgs.gov/b2c_usgs/b2c/start/(xcm=r3standardpitrex_prd)/.do) go to this webpage and look on the extreme right side to the box titled TOPO MAPS DOWNLOAD TOPO MAPS FREE.

<http://www.geographynetwork.com/> Go here and try their top 5 map services. My favorite is 'USGS Elevation Date.' Zoom in on your favorite places and see great shaded relief images. One of my favorites is the Great Sand Dunes National Park in south central Colorado. Nice Dunes.

<http://antwrp.gsfc.nasa.gov/apod/astropix.html> Astronomy picture of the day — awesome. I click this page everyday.

<http://www.spacimaging.com/gallery/ioweek/iow.htm> Amazing satellite images. Check out the gallery.

<http://www.ngdc.noaa.gov/seg/topo/globegal.shtml> More great maps to share with kids and students.

[www.geo.org](http://www.geo.org) Don't forget we have our own web page.

<http://micro.magneet.fsu.edu/primer/java/scienceoptiscu/owersofl0/>

<http://asterweb.jpl.nasa.gov/galery/default.htm> Great satellite images of volcanoes

<http://terra.nasa.gov/gallery/> More here

[www.ermapper.com](http://www.ermapper.com) They have a great free downloadable viewer for TIFF and other graphic files called ER Viewer.

[www.drillinginfo.com](http://www.drillinginfo.com) This is an incredible (subscription) well and completion data service for independents. Can be demo'ed for free.

<http://terraserver.com/> Go here to download free aerial photo images that can be plotted under your digital land and well data. Images down to 1 meter resolution, searchable by Lat Long coordinate. Useful for resolving well location questions.

<http://www.fs.fed.us/gpnf/volcanocams/msh/> This is a live cam of Mt. St. Helens refreshed every 5 minutes. At the bottom are old videos of past eruptions in this cycle. It is worth a watch especially now.



# MGS HONORARY MEMBERS

**Esther Applin\***

**Verne Culbertson \***

**David C. Harrell\***

**Dudley J. Hughes\***

**Walter P. Jones\***

**Winnie McGlammary\***

**Maurice E. Miesse\***

**Marvin E. Norman\***

**Thurston Connell Rader\***

**Henry Toler\***

**Charles H. Williams**

**David Cate**

**Paul Applin\***

**H. Leroy Francis\***

**Oleta R. Harrell\***

**Urban B. Hughes\***

**Harold Karges\***

**Thomas McGlothin\***

**Emil Monsour\***

**Marvin L. Oxley\***

**Baxter Smith\***

**H. Vaughn Watkins**

**Jerry Zoble**

**Stanley King**

**Lawrence F. Boland\***

**Jim Furrh\***

**Ralph Hines**

**Wendell B. Johnson \***

**Wilbur H. Knight\***

**Frederic F. Mellen\***

**William H. Moore\***

**Richard R. Priddy\***

**Harry V. Spooner**

**Stewart W. Welch\***

**Julius Ridgeway**

**\* deceased**



**MEMBERSHIP APPLICATION / RENEWAL FORM**

**MISSISSIPPI GEOLOGICAL SOCIETY**

**P.O. BOX 422, JACKSON, MISSISSIPPI 39205-0422**

**2017-2018**

Membership year is June through May

New Membership (\$20/yr)\_\_\_\_ Renewal (\$20/yr)\_\_\_\_ Student (FREE)\_\_\_\_ Associate (\$20/yr)\_\_\_\_

Boland Scholarship Fund Donation \$ \_\_\_\_\_ Total Amount Enclosed \$ \_\_\_\_\_

Last Name: \_\_\_\_\_ First: \_\_\_\_\_ MI: \_\_\_\_\_

Mailing Address: \_\_\_\_\_

Office Phone: \_\_\_\_\_ Home Phone: \_\_\_\_\_ FAX: \_\_\_\_\_

E-mail Address: \_\_\_\_\_

College/University Attended: \_\_\_\_\_

Degree(s) Obtained and Year(s) Awarded: \_\_\_\_\_

Professional Associations, Certifications, & Licenses: \_\_\_\_\_

## MGS ADVERTISING ORDER FORM

September 2017 – May 2018

### I. Bulletin Advertisements:

<u>Size</u>	<u>Rate/Year</u>	<u>Amt. Remitted</u>
Full Page Ad (6" x 8")	\$500	\$ _____
1/2 Page Ad (6" x 4")	\$300	\$ _____
1/4 Page Ad (3" x 4")	\$200	\$ _____
Business Card Ad (1 1/2" x 3")	\$100	\$ _____
Professional Listing (1/2" x 3")	\$ 50	\$ _____

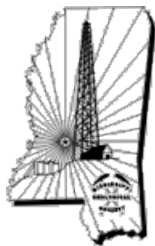
### II. Web Page Advertisements (www.missgeo.com):

<u>Type of Web Page Ad</u>	<u>Rate/Year</u>	<u>Amt. Remitted</u>
Front Page Sponsor (Banner Ad – limit of 5)	\$500	\$ _____
Second Page Banner Ad	\$250	\$ _____
Professional Listing/Link	\$100	\$ _____

(Note: Please contact Steve Walkinshaw at (601) 607-3227 or mail@visionexploration.com for details concerning placing your ad on the MGS web site.)

**Total Remitted** \$ \_\_\_\_\_

Please make checks payable to the Mississippi Geological Society. If you have any questions, contact Matt Caton at (601) 898-7444 or mcaton@tellusoperating.com



## 2017-2018 MGS MEMBERS

Bill Bagnall	Joe McDuff
Larry Baria	Tom McMillan
Neil Barnes	Malcom McMillan
Maurice Birdwell	David Miller
Randy Bissell	Jack Moody
Chris Bowen	Charlie Morrison
Keith Bowman	Pickering
Matt Caton	Mark Puckett
David Dockery	Philip Reeves
Dave Easom	Bob Schneeflock
Jim Files	Thomas Bing Seitz
Bob Gaston	George Smith
Tom Giosa	Charles Smith
David Hancock	Jimmy Sparks
Johnny Holifield	James Stephens
Ed Hollingsworth	Tony Stuart
Fred Katzenmeyer	Andrew Sylte
Karl Kaufmann	Tom Sylte
Lars Johnson	Michael Taylor
Joe Johnson	Stan Thieling
Cody Lenert	Sid Thompson
Howard Lowery	Janet Verret
Louis J. Lyell	Steve Walkinshaw
Tim Lyons	Ricky Warren
Ken Magee	Joe White
	Mark Wyatt

This list is updated monthly. Please contact Bill Bagnall if you have questions.



## MILBIRD RESOURCES, LLC

*Oil & Gas Exploration*

### Maurice N. Birdwell

Managing Partner  
AAPG Certified Petroleum Geologist  
Reg. Prof. Geol. Ark. La. Miss. Tex

2043 Oak Ridge Drive  
Pearl, MS 39208

601.936.6939  
mnbirdwell@comcast.net

### Joe R. White, Jr.

Petroleum Geologist

8505 Dogwood Trail  
Haughton, LA 71037  
Cell. 318-423-9828  
Hm. 318-949-3539  
Available for Consulting

AAPG CPG #5580  
MS RPG #0097  
LA CPG #345  
Jwhite1362@aol.com  
Joerjrw@gmail.com

## PRUET OIL COMPANY LLC

*Oil & Gas Exploration*

217 W. Capitol St.  
Jackson, MS 39201

601-948-5279  
dcate@pruet.com

Joseph H. McDuff  
Geologist

351 Chapel Loop  
Mandeville, LA 70471  
985.845.9430  
jhmcduff@charter.net



EXPLORATION LLC

Jon Q=Petersen, President  
Autie T. Orjias, V. P. / Land Manager  
Dean Giles, Secretary / Treasurer  
S. Cody Lenert, Geologist  
Ryan Q=Petersen Land

**(318) 222-8406**  
**Fax (318) 222-6061**

401 Edwards Street, Suite 1200  
Shreveport, LA 71101

P. O. Box 1367  
Shreveport, LA 71164

Email:  
mei@marlinexploration.com

**VALIOSO**  
PETROLEUM CO., INC.



KARL J KAUFMANN

504 KEYWOOD CIRCLE SUITE A  
FLOWOOD, MS 39232  
PHONE: 601-936-3601  
CELL: 601-209-0948  
VALIOSO@BELLSOUTH.NET



# MGS PAST PRESIDENTS

1939-1940	Henry N. Toler	1973-1974	Larry Walter
1940-1941	Urban B. Hughes	1974-1975	W. E. "Gene" Taylor
1941-1942	J. Tom McGlothlin	1975-1976	Jerry E. Zoble
1942-1943	Dave C. Harrell	1976-1977	P. David Cate
1943-1944	K. K. "Bob" Spooner	1977-1978	Sarah Childress
1944-1945	L. R. McFarland	1978-1979	Les Aultman
1945-1946	J. B. Story	1979-1980	Philip R. Reeves
1946-1947	Frederic F. Mellen	1980-1981	Marshall Kern
1947-1948	H. Lee Spyres	1981-1982	Stephen Oivanki
	Robert D. Sprague	1982- 1983	James W. "Buddy" Twiner
1948-1949	Robert D. Sprague	1983- 1984	Charles H. Williams
1949-1950	E. T. "'Mike" Monsour	1984- 1985	C. Kip Ferns
1950-1951	J. Tate Clark	1985-1986	Steven S. Walkinshaw
	Charles E. Buck	1986-1987	J. R. "'Bob" White
1951-1952	George W. Field	1987-1988	Harry Spooner
1952-1953	James L. Md11in, Jr.	1988-1989	Stanley King
1953-1954	Wilbur H. Knight	1989-1990	Stan Galicki
1954-1955	A. Ed Blanton	1990-1991	E. James Files, Jr.
1955-1956	Gilbert A. Talley	1991-1992	Stephen L. Ingram, Sr.
1956-1957	Ben Ploch	1992-1993	Michael Noone/Stanley King
1957-1958	Emil Monsour	1993-1994	Brian Sims
1958-1959	Charles Brown	1994-1995	C. W. "Neil" Barnes
1959-1960	M. F. Kirby	1995-1996	Lester Aultman
1960-1961	Rudy Ewing	1996-1997	Jack S. Moody
1961-1962	Xavier M. Franscogna	1997-1998	George B. Vockroth
1962-1963	Robert B. Ross	1998-1999	Rick L. Ericksen
1963-1964	William A. Skees	1999-2000	Stanley King
	Marvin Oxley	2000-2001	John C. Marble
1964-1965	James F. Bollman	2001-2002	Andrew T. Sylte
1965-1966	Sankey L. Blanton	2002-2003	Aaron Lasker
1966-1967	Alan Jackson	2003-2004	John G. Cox
1967-1968	Julius M. Ridgway	2004-2005	James E. Starnes
1968-1969	Edward D. Minihan	2005-2006	Todd Hines
1969-1970	Kevin E. Cahill	2006-2007	Bob Schneeflock
1970-1971	John Lancaster	2007-2008	Tony Stuart
1971-1972	Larry Boland	2008-2009	Lisa Ivshin
1972-1973	Charles Barton	2009-2010	Joe Johnson
		2010-2011	Brian Sims
		2011-2012	Stanley King
		2012-2013	Jim Files
		2013-2014	Neil Barnes
		2014-2015	Ezat Heydari
		2015-2016	Jack Moody
		2016-2017	Cragin Knox