

MISSISSIPPI GEOLOGICAL SOCIETY

eBULLETIN

Volume 64

No. 2

October 2015

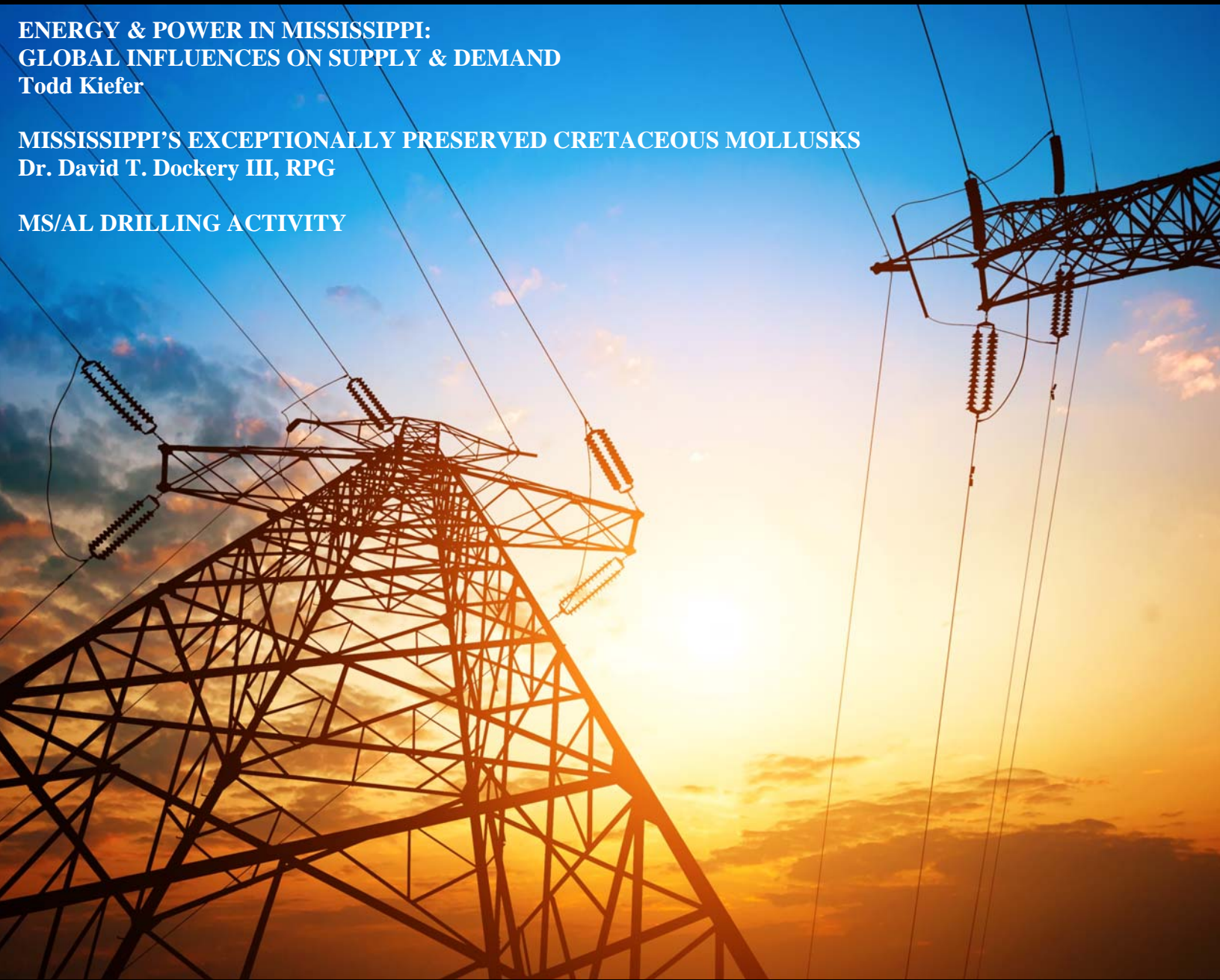
ENERGY & POWER IN MISSISSIPPI:
GLOBAL INFLUENCES ON SUPPLY & DEMAND

Todd Kiefer

MISSISSIPPI'S EXCEPTIONALLY PRESERVED CRETACEOUS MOLLUSKS

Dr. David T. Dockery III, RPG

MS/AL DRILLING ACTIVITY



www.missgeo.com



MGS 2015-2016 BOARD OF DIRECTORS

Officers

| | | | | |
|---------------------------|------------------|--------------------|--|----------------|
| President | Jack Moody | Independent | jsmpoststate@gmail.com | |
| 1st Vice President | Craig Knox | Waggoner | Cragin.knox@waggonereng.com | (601) 355-9526 |
| 2nd Vice President | Joe Johnson | Spooner Petroleum | jjohnson@spoonercompanies.com | (601) 898-7444 |
| Treasurer | Bill Bagnall | BLM | wbagnall@blm.gov | (601)-977-5417 |
| Webmaster | Steve Walkinshaw | Vision Exploration | steve@visionexploration.com | (601) 607-3227 |
| Advertising | Matt Caton | Tellus Operating | mcaton@tellusoperating.com | (601) 898-7444 |
| Editor | Matt Caton | Tellus Operating | mcaton@tellusoperating.com | (601) 898-7444 |

Boland Scholarship

| | | | | |
|------------------|-----------------|-----------------------|--|----------------|
| President | Jack Moody | Independent | | |
| Secretary | Dave Cate | Pruet Oil | | (601) 948-5279 |
| Members | Ray Lewand | | | |
| | Tony Stuart | Venture Oil & Gas | | (601) 428-7725 |
| | James Starnes | DEQ | | |
| | Bob Schneeflock | Geodigital Consulting | | (601) 853-0701 |

Honorary Membership

| | | | |
|-----------------|--|-------------|----------------|
| Chairman | Charles H. Williams, Jr. Vaughey & Vaughey | | (601) 982-1212 |
| Members | E. Ralph Hines | Moon-Hines | (601) 572-8300 |
| | Jerry Zoble | Independent | |

MGS Representatives

| | | | |
|--------------|------------------|---------------|----------------|
| AAPG | Maurice Birdwell | Independent | (601) 936-6939 |
| GCAGS | Danny Harrelson | U.S. Army R&D | (601) 634-2685 |

Other

| | | | |
|----------------------|--------------|-------------|----------------|
| Environmental | John Ryan | Allen | (601) 936-4440 |
| Historian | Stanley King | Independent | (601) 842-3539 |

2015-2016 MGS MEETING SCHEDULE

| When | What/Who | Where |
|------------------------|---|------------------------------|
| September 10, 2015 | Fall BBQ | Jackson Yacht Club-5:30pm |
| October 8, 2015 | Todd Keifer Energy & Power in MS | River Hills – 11:30am |
| November 12, 2015 | Danny Harrelson Canals & River Cutoffs as a tactic during Vicksburg Campaign of American Civil War | River Hills – 11:30am |
| TBD | MAPL Christmas Party and Dance | TBD |
| January 7, 2016 | TBD | River Hills – 11:30am |
| February 11, 2016 | TBD | River Hills – 11:30am |
| March 10, 2016 | TBD | River Hills – 11:30am |
| April 7, 2016 | Boland Scholarship Awards | River Hills – 11:30am |
| May 12, 2016 | Spring Fling | Jackson Yacht Club– 5:30pm |



OFFICERS MEETINGS

| |
|------------------------|
| September 8, 2015 |
| October 6, 2015 |
| November 10, 2015 |
| January 5, 2016 |
| February 9, 2016 |
| March 8, 2016 |
| April 5, 2016 |
| May 10, 2016 |



PRESIDENT'S LETTER

Jack Moody



I must begin by thanking our sponsors, members, wives, students, and vendors who made the Fall BBQ such an enjoyable event. When an organization our size can muster the turnout we had it does let all know that MGS is alive and well. Many thanks to all.

What a time to be alive. The changes that are upon us are so fundamental to who and what the USA is and where it is going. Our organization of geologists is not left out of the whirl wind. Energy and resource development, the fate of species, and the history of climate are all hot topics in which we have considerable education, training, and experience compared to the general population. In our times the blending of politics, media-fame, and science has produced polarized views with little tolerance for opposing current scientific conclusions. I read the following news article the other night. "The science on global warming is settled, so settled that 20 climate scientists are asking President Barack Obama to prosecute people who disagree with them on the science behind man-made global warming.

Scientists from several universities and research centers even [asked Obama to use the Racketeer Influenced and Corrupt Organizations Act \(RICO\) to prosecute groups that "have knowingly deceived the American people about the risks of climate change,](#) as a means to forestall America's response to climate change." I saw this first on Fox News website then googled it. Several years ago I read a top peer reviewed science news magazine and noted that the editor was so incensed by some scientists bucking the band wagon of popular beliefs. He no longer needed more proof. Climate change should be treated as a law, not merely a theory to be disputed. I was appalled. Science does not move at the speed of politics. When the pot gets poisoned by biased science, grant funding, and intolerance, the fix is in. So here we are today with - join the majority views or go to jail. The "majority views" will meet this December in Paris for the next UN meeting on climate change. This is a very strong tide that will be rolling through the body of world politics. Don't be surprised if you begin to feel its chilly anti fossil fuel waters coming to a town near you. Do we as geologist believe that climate changes? Absolutely. Is there a substantial geologic scientific record of these changes? You bet. My point is not to debate climate change but rather to realize that the upheaval that is affecting so much of the country touches our little corner of the world. With respect to climate change people my age were taught the results of the excellent field work done by the early Pleistocene geologists of Europe and North America. For some of the older geologists it is hard to accept the current "law" that climate change is caused by humans. For many younger geologist the older view is antiquated. AAPG found out how divided its membership was when it first attempted to produce an official policy statement on the issue. Let's hope that science is allowed to move without external interference and eventually gets close to understanding the cause and effect relationships that drive the natural systems.

Many of our members are in the energy business. Others are in the business of building infrastructure and/or complying with existing laws and regulations. With that in mind, I hope to raise the membership's awareness of what is going on from the non-fossil fuel side of the energy industry. If I can do this successfully I think you'll benefit by being informed and you may like some of what you hear, I do.

Again thanks to our officers, members, and sponsors for supporting MGS and I hope to see many of you at our regular monthly meetings.

Jack Moody



OCTOBER SPEAKER

Todd Kiefer



Todd Kiefer is a 25-year military officer, Naval aviator, EA-6B Prowler pilot. 8 times deployed to Middle East and Southwest Asia. 22 months on the ground in Iraq. 3 years as pentagon strategic planner on Joint Staff. 3 years as faculty instructor of warfighting and strategy and CJCS Chair at the Air War College. Degrees in physics, strategy, and history. Operational experience in military command, electronic and information warfare, military strategy and war planning, operational testing of software and avionics, aviation training, crash investigation, contract management. Published papers on energy security and biofuels. Literature research focused on primary energy, alternative energy, photosynthesis, electrification and economic development, international relations theory and geopolitics, demographic trends, climate and environment, water and resource scarcity, biophysical economics, EROI. Currently managing a local power company and a rural water association.



MISSISSIPPI GEOLOGICAL SOCIETY

USGS-Tuscaloosa Marine Shale

ATTENTION!

**The United States Geological Survey needs
YOUR help.**

**Paul Hackley of the USGS is doing a study of the
Tuscaloosa Marine Shale and is looking for oil samples.**

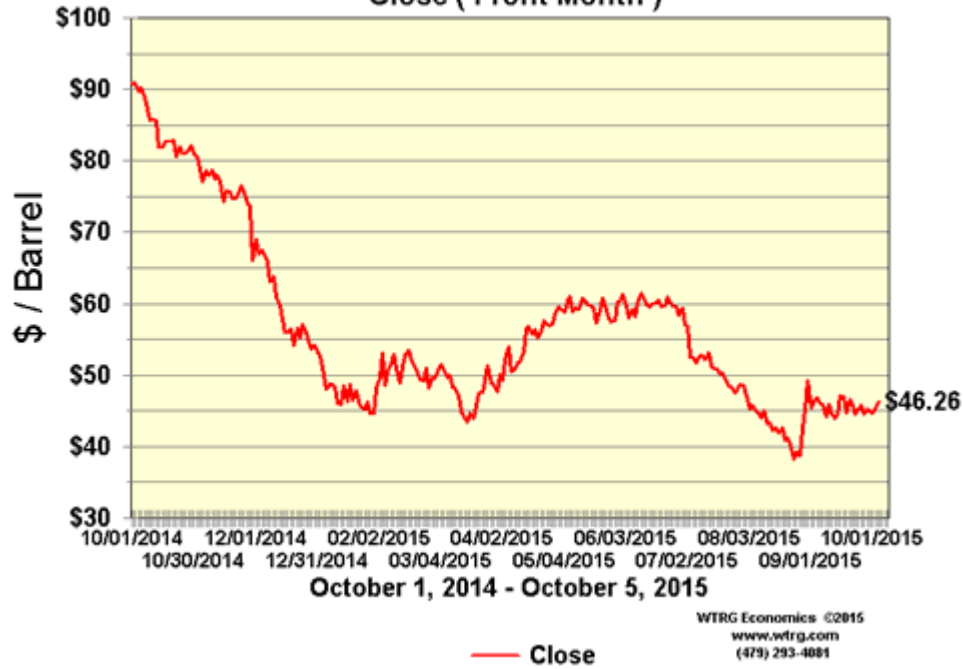
If you can help please contact the editor.

Thank You

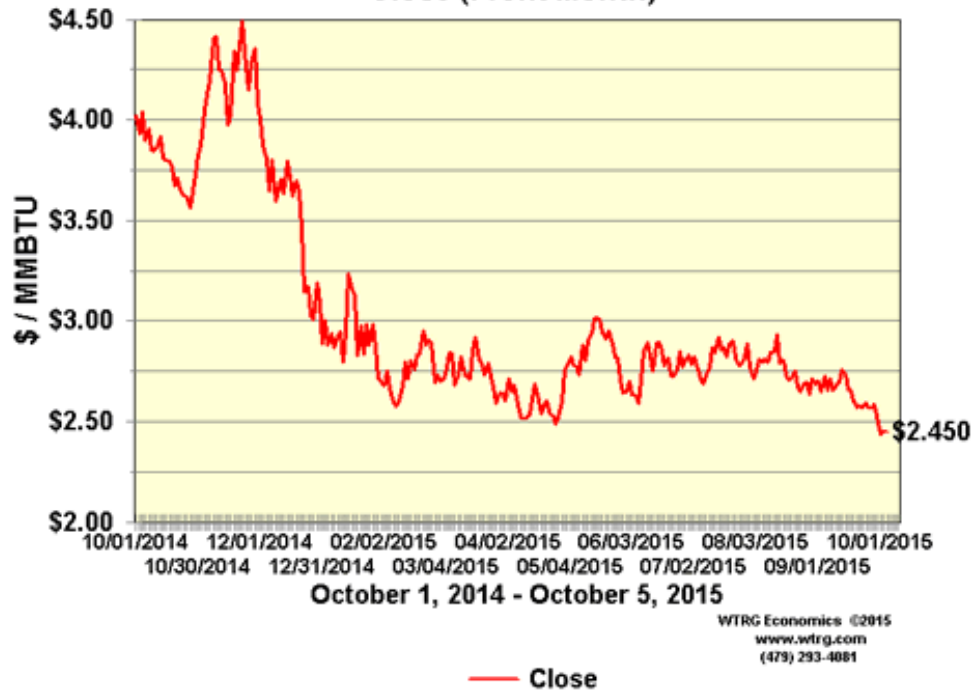


CURRENT PRICES

**NYMEX Crude Oil Futures
Close (Front Month)**



**NYMEX Natural Gas Futures
Close (Front Month)**





MONTHLY POST

Dr. David T. Dockery III RPG

MISSISSIPPI'S EXCEPTIONALLY PRESERVED CRETACEOUS MOLLUSKS

David T. Dockery III, RPG, MDEQ Office of Geology

In June 2002, among other things, I was working on an early draft of *The Geology of Mississippi* (with co-author David Thompson) and a paper on Cretaceous Gastropods of the Coon Creek Tongue of the Ripley Formation (with Klaus Bandel, University of Hamburg). I knew the completion of the first of these would take some time, but the publication of the second was to be only half a year away in a volume on the Coon Creek Type locality in Tennessee. Both publications had starts and stops, but oddly enough, *The Geology of Mississippi* by University Press of Mississippi in partnership with MDEQ and the Coon Creek volume by the Alabama Museum of Natural History will probably be available early next year. Mississippi and Tennessee have exceptionally well preserved Cretaceous mollusks, while the rest of the world has largely replaced shells, molds and casts.

Figure 1 shows the mother-of-pearl shell of the Coffee Sand ammonite *Placenticerus intercalare* from Lee County, Mississippi



Figure 1. *Placenticerus intercalare* from the Coffee Sand in Lee County, Mississippi. Image from George Phillips, Mississippi Museum of Natural Science.



MONTHLY POST

Dr. David T. Dockery III RPG

Figure 2 gives three views of the gastropod *Anchura abrupta*



Figure 2. *Anchura abrupta* from the Coon Creek Tongue of the Ripley Formation in Union County, Mississippi.

Figure 3 gives three views of the gastropod *Volutamorpha valida*, both species from the Coon Creek Tongue of the Ripley Formation in Union County, Mississippi



Figure 3. *Volutamorpha valida* from the Coon Creek Tongue of the Ripley Formation in Union County, Mississippi.



MONTHLY POST

Dr. David T. Dockery III RPG

. Figure 4 shows two specimens of the gastropod *Neritina* with its original color pattern from the Coon Creek Tongue of the Ripley Formation in Union County; two recent *Neritina* specimens are included with almost the same color pattern as the 70-million-year-old fossils.



Figure 4. Fossil *Neritina*, with original color pattern, from the Coon Creek Tongue of the Ripley Formation in Union County, Mississippi (at top) and recent *Neritina* with label.



MONTHLY DRILLING REPORT

Mississippi & Alabama

DRILLING WELLS & LOCATIONS

MISSISSIPPI

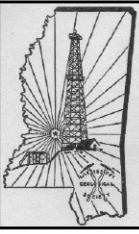
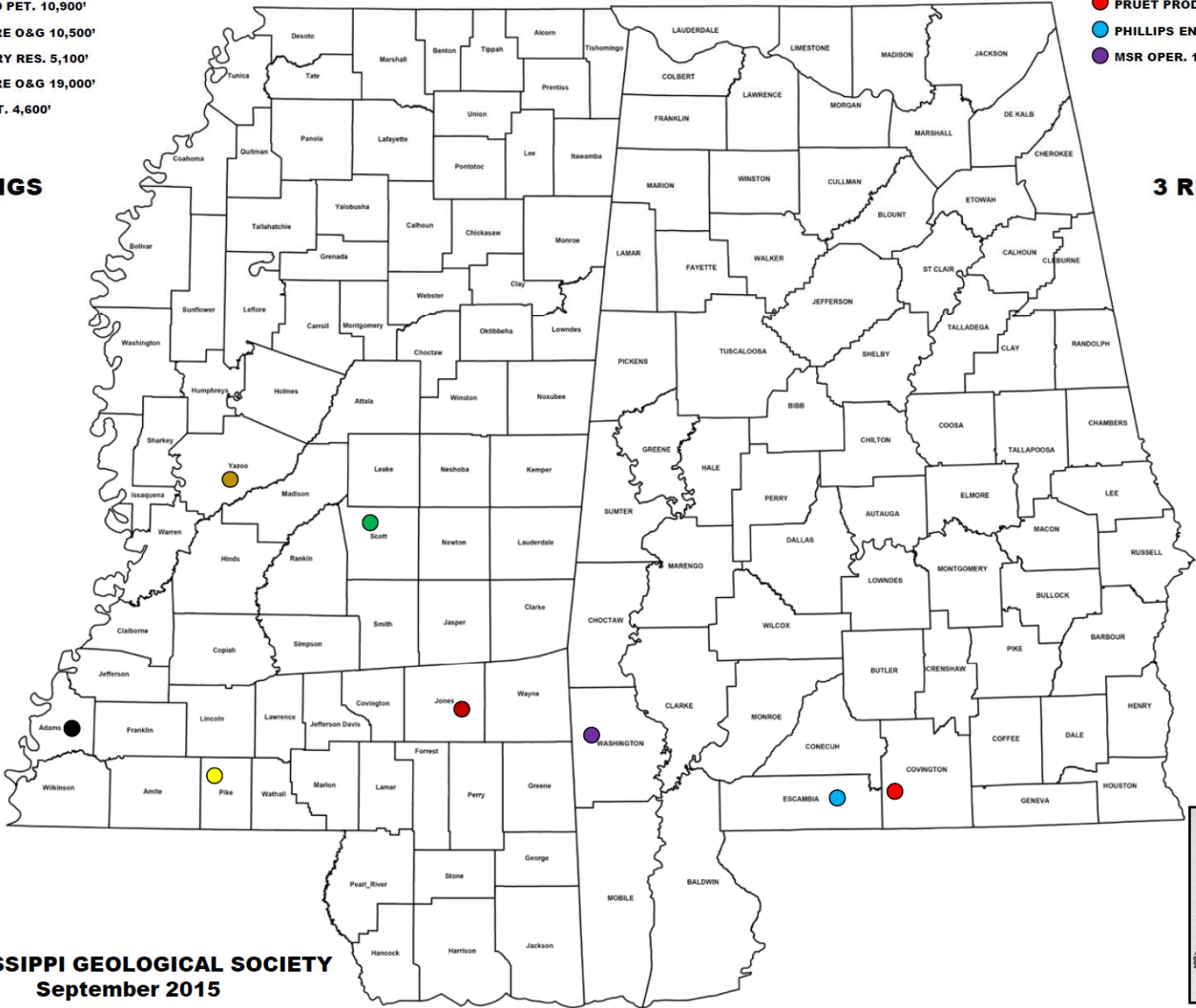
- STROUD PET. 10,900'
- VENTURE O&G 10,500'
- DENBURY RES. 5,100'
- VENTURE O&G 19,000'
- KFG PET. 4,600'

5 RIGS

ALABAMA

- PRUET PROD. 13,500'
- PHILLIPS ENERGY 13,000'
- MSR OPER. 16,150'

3 RIGS



Rotary Rig Count
10/2/2015



| Location | Week | +/- | Week Ago | +/- | Year Ago |
|-----------------------------|------------|------------|------------|--------------|-------------|
| Land | 776 | -24 | 800 | -1074 | 1850 |
| Inland Waters | 3 | -2 | 5 | -8 | 11 |
| Offshore | 30 | -3 | 33 | -31 | 61 |
| United States Total | 809 | -29 | 838 | -1113 | 1922 |
| Gulf Of Mexico | 29 | -2 | 31 | -30 | 59 |
| Canada | 179 | 3 | 176 | -251 | 430 |
| North America | 988 | -26 | 1014 | -1364 | 2352 |
| U.S. Breakout Information | This Week | +/- | Last Week | +/- | Year Ago |
| Oil | 614 | -26 | 640 | -977 | 1591 |
| Gas | 195 | -2 | 197 | -135 | 330 |
| Miscellaneous | 0 | -1 | 1 | -1 | 1 |
| Directional | 83 | -3 | 86 | -126 | 209 |
| Horizontal | 609 | -20 | 629 | -732 | 1341 |
| Vertical | 117 | -6 | 123 | -255 | 372 |
| Canada Breakout Information | This Week | +/- | Last Week | +/- | Year Ago |
| Oil | 70 | 4 | 66 | -179 | 249 |
| Gas | 109 | -1 | 110 | -72 | 181 |
| Miscellaneous | 0 | 0 | 0 | 0 | 0 |
| Major State Variances | This Week | +/- | Last Week | +/- | Year Ago |
| Alaska | 11 | -2 | 13 | 2 | 9 |
| Arkansas | 4 | 1 | 3 | -8 | 12 |
| California | 13 | -1 | 14 | -33 | 46 |
| Colorado | 30 | -3 | 33 | -46 | 76 |
| Kansas | 10 | 1 | 9 | -14 | 24 |
| Louisiana | 66 | -4 | 70 | -47 | 113 |
| New Mexico | 46 | -4 | 50 | -53 | 99 |
| North Dakota | 65 | -1 | 66 | -124 | 189 |
| Ohio | 20 | 1 | 19 | -20 | 40 |
| Oklahoma | 97 | -8 | 105 | -115 | 212 |
| Pennsylvania | 30 | -3 | 33 | -27 | 57 |
| Texas | 357 | -6 | 363 | -538 | 895 |
| Utah | 5 | 0 | 5 | -18 | 23 |
| West Virginia | 18 | 1 | 17 | -12 | 30 |
| Wyoming | 24 | 0 | 24 | -36 | 60 |
| Major Basin Variances | This Week | +/- | Last Week | +/- | Year Ago |
| Ardmore Woodford | 2 | -2 | 4 | -2 | 4 |
| Arkoma Woodford | 8 | 0 | 8 | 1 | 7 |
| Barnett | 6 | 0 | 6 | -15 | 21 |
| Cana Woodford | 37 | -3 | 40 | -5 | 42 |
| DJ-Niobrara | 26 | -3 | 29 | -38 | 64 |
| Eagle Ford | 82 | -3 | 85 | -128 | 210 |
| Fayetteville | 4 | 1 | 3 | -5 | 9 |
| Granite Wash | 12 | 0 | 12 | -52 | 64 |
| Haynesville | 26 | 0 | 26 | -18 | 44 |
| Marcellus | 47 | -2 | 49 | -35 | 82 |
| Mississippian | 14 | 0 | 14 | -64 | 78 |
| Permian | 245 | -5 | 250 | -311 | 556 |
| Utica | 21 | 1 | 20 | -22 | 43 |
| Williston | 66 | -1 | 67 | -132 | 198 |



BOLAND SCHOLARSHIP WATCH

Faculty & Students,

This is a new year and the Mississippi Geological Society along with the Boland Scholarship Fund would like to remind you that we want to honor the most outstanding overall students for the 2015-2016 year.

Each year, the Boland Scholarship awards 1 student from each institution a check that rewards students for their hard work and dedication to the Geosciences and their community.

We look forward to a great year and hope to see you at our monthly meetings.

Best Regards,

Matt Caton
Editor



THE UNIVERSITY OF
SOUTHERN
MISSISSIPPI

MILLSAPS
COLLEGE



BOLAND SCHOLARSHIP CONTRIBUTIONS

Thank you for your generous
contributions to the Boland Scholarship
Fund

I. Meade Hufford
Alvin Byrd
Maurice Birdwell
Joe White
Tom McMillan
Chris Franks
Geodigital Consulting, LLC



GEOLOGY POST

ARTICLES, PAPERS or NEWS?

ATTENTION!!!!!! Industry, Professors and Students:

I am adding a dedicated section that includes more content from the industry and our schools.

Submissions can include anything from professional papers, thesis abstracts, job opportunities to pictures. Anything!!!!

If you have any information or news you would like to share with the Society **PLEASE** email them to the MGS Editor at:

mcaton@tellusoperating.com

Thanks & Regards,

Matt Caton
Editor

GEO LINK POST

USGS TAPESTRY OF TIME AND TERRAIN <http://tapestry.usgs.gov> The CCGS is donating to all of the 5th and 6th grade schools in the Coastal Bend. Check it out—it is a spectacular map. You might want a framed one for your own office. The one in my office has glass and a metal frame, and it cost \$400 and it does not look as good as the ones we are giving to the schools. Call Owen 510-6224 if you want one for your office for \$150. Duncan, Mike, Chris, Dave, Bob Randy, Seb., Kevin, Ken, Craig, Patrick, Robert.

FREE TEXAS TOPO'S <http://www.tnris.state.tx.us/digital.htm> these are TIFF files from your state government that can be downloaded and printed. You can add them to SMT by converting them first in Globalmapper. Other digital data as well.

FREE NATIONAL TOPO'S [http://store.usgs.gov/b2c_usgs/b2c/start/\(xcm=r3standardpitrex_prd\)/.do](http://store.usgs.gov/b2c_usgs/b2c/start/(xcm=r3standardpitrex_prd)/.do) go to this webpage and look on the extreme right side to the box titled TOPO MAPS DOWNLOAD TOPO MAPS FREE.

<http://www.geographynetwork.com/> Go here and try their top 5 map services. My favorite is 'USGS Elevation Date.' Zoom in on your favorite places and see great shaded relief images. One of my favorites is the Great Sand Dunes National Park in south central Colorado. Nice Dunes.

<http://antwrp.gsfc.nasa.gov/apod/astropix.html> Astronomy picture of the day — awesome. I click this page everyday.

<http://www.spacimaging.com/gallery/ioweek/iow.htm> Amazing satellite images. Check out the gallery.

<http://www.ngdc.noaa.gov/seg/topo/globegal.shtml> More great maps to share with kids and students.

www.geo.org Don't forget we have our own web page.

<http://micro.magneet.fsu.edu/primer/java/scienceoptiscu/owersof10/>

<http://asterweb.jpl.nasa.gov/galery/default.htm> Great satellite images of volcanoes

<http://terra.nasa.gov/gallery/> More here

www.ermapper.com They have a great free downloadable viewer for TIFF and other graphic files called ER Viewer.

www.drillinginfo.com This is an incredible (subscription) well and completion data service for independents. Can be demo'ed for free.

<http://terrasrver.com/> Go here to download free aerial photo images that can be plotted under your digital land and well data. Images down to 1 meter resolution, searchable by Lat Long coordinate. Useful for resolving well location questions.

<http://www.fs.fed.us/gpnf/volcanocams/msh/> This is a live cam of Mt. St. Helens refreshed every 5 minutes. At the bottom are old videos of past eruptions in this cycle. It is worth a watch especially now.



MGS HONORARY MEMBERS

Esther Applin*

Verne Culbertson *

David C. Harrell*

Dudley J. Hughes*

Walter P. Jones*

Winnie McGlammery*

Maurice E. Miesse*

Marvin E. Norman*

Thurston Connell Rader*

Henry Toler*

Charles H. Williams

David Cate

Paul Applin*

H. Leroy Francis*

Oleta R. Harrell*

Urban B. Hughes*

Harold Karges*

Thomas McGlothin*

Emil Monsour*

Marvin L. Oxley*

Baxter Smith*

H. Vaughn Watkins

Jerry Zoble

Stanley King

Lawrence F. Boland*

Jim Furrh*

Ralph Hines

Wendell B. Johnson *

Wilbur H. Knight*

Frederic F. Mellen*

William H. Moore*

Richard R. Priddy*

Harry V. Spooner

Stewart W. Welch*

Julius Ridgeway

*** deceased**

MEMBERSHIP APPLICATION / RENEWAL FORM

MISSISSIPPI GEOLOGICAL SOCIETY

P.O. BOX 422, JACKSON, MISSISSIPPI 39205-0422

2015-2016

Membership year is June through May

New Membership (\$20/yr)_____ Renewal (\$20/yr)_____ Student (FREE)_____ Associate (\$20/yr)_____

Boland Scholarship Fund Donation \$_____ Total Amount Enclosed \$_____

Last Name:_____ First:_____ MI:_____

Mailing Address:_____

Office Phone:_____ Home Phone:_____ FAX:_____

E-mail Address: _____

College/University Attended: _____

Degree(s) Obtained and Year(s) Awarded: _____

Professional Associations, Certifications, & Licenses: _____



2015-2016 MGS MEMBERS

| | |
|--------------------|--------------------|
| Bill Bagnall | Howard Lowery |
| Tiffany Berry | Joe Lott |
| Maurice Birdwell | Tom McMillan |
| Alvin Bird | Drew Mills |
| Randy Bissell | Jonney Mitchell |
| Chris Bowen | Jack Moody |
| J. C. Carlisle | Charlie Morrison |
| Dave Cate | Asa Mullenaxx |
| Matt Caton | Jess New |
| Kayla Calhoun | James Nix |
| Phil Cook | James Norris |
| Andrew Cummings | Alexandra Novak |
| Jim Files | Charles Peel |
| Chris Franks | Armando Ricci |
| Stan Galicki | Julius Ridgeway |
| Bob Gaston | Bob Schneeflock |
| Danny Harrelson | Thomas Seitz |
| Jamie Harris | George Self |
| Dan Herlihy | Joseph Sharp |
| Robert Herr | Jeremi Simmons |
| David Higgenbotham | Harry Spooner |
| Paige Hilburn | John Sullivan |
| David Hilton | Andy Sylte |
| Ralph Hines | Tom Sylte |
| Todd Hines | Mike Taylor |
| I. Meade Hufford | Sid Thompson |
| Kevin Jeffreys | Watts Ueltschey |
| Lars Johnson | Wayne Upchurch |
| Joe Johnson | Steve Walkinshaw |
| Karl Kaufmann | Vaughn Watkins |
| Emilie Kelly | Jeremy Weremelchik |
| Stanley King | Robert Weyman |
| Brenda Kirkland | Joe White |
| Cragin Knox | Charlie Williams |
| James Landrem | Mark Wyatt |
| Jonathan Leard | Jerry Zoble |
| Cody Lenert | |

This list is updated monthly. Please contact Bill Bagnall if you have questions.

MGS ADVERTISING ORDER FORM

September 2015 – May 2016

I. Bulletin Advertisements:

| <u>Size</u> | <u>Rate/Year</u> | <u>Amt. Remitted</u> |
|----------------------------------|------------------|----------------------|
| Full Page Ad (6" x 8") | \$500 | \$ _____ |
| 1/2 Page Ad (6" x 4") | \$300 | \$ _____ |
| 1/4 Page Ad (3" x 4") | \$200 | \$ _____ |
| Business Card Ad (1 1/2" x 3") | \$100 | \$ _____ |
| Professional Listing (1/2" x 3") | \$ 50 | \$ _____ |

II. Web Page Advertisements (www.missgeo.com):

| <u>Type of Web Page Ad</u> | <u>Rate/Year</u> | <u>Amt. Remitted</u> |
|--|------------------|----------------------|
| Front Page Sponsor (Banner Ad – limit of 5) | \$500 | \$ _____ |
| Second Page Banner Ad | \$250 | \$ _____ |
| Professional Listing/Link | \$100 | \$ _____ |

(Note: Please contact Steve Walkinshaw at (601) 607-3227 or mail@visionexploration.com for details concerning placing your ad on the MGS web site.)

Total Remitted \$ _____

Please make checks payable to the Mississippi Geological Society. If you have any questions, contact Matt Caton at (601) 898-7444 or mcaton@tellusoperating.com

Howard Lowery
Account Representative



Accurate Data, Reliable Solutions

800.256.1147

601.441.9857

www.stratagraph.com

hlowery@stratagraph.com

P.O. Box 53848
Lafayette, LA 70505

Joseph H. McDuff
Geologist



351 Chapel Loop
Mandeville, LA 70471
985.845.9430

jhmcduff@charter.net

VALIOSO
PETROLEUM CO., INC.



KARL J KAUFMANN

504 KEYWOOD CIRCLE PHONE: 601-936-3601
SUITE A CELL: 601-209-0948
FLOWOOD, MS 39232 VALIOSO@BELLSOUTH.NET

Joe R. White, Jr.
Petroleum Geologist

400 Travis St., Ste. 909
Shreveport, LA 71101
Ofc. 318-703-2311
Cell. 318-423-9828
Hm. 318-949-3539

AAPG CPG #5580
MS RPG #0097
LA RPG (SUBMITTED)
Jwhite1362@aol.com
Joerjrw@gmail.com

Baldwin Madden Energy, LLC
Oil and Gas Acquisitions and Development

Christopher D. Franks
Senior Geologist

333 Texas Street, Suite 1919
Shreveport, Louisiana 71101-3666
318-429-2204 / 318-429-2229 (fax)
chris.franks@BaldwinMadden.com



MGS PAST PRESIDENTS

| | | | |
|-----------|-----------------------|------------|----------------------------|
| 1939-1940 | Henry N. Toler | 1973-1974 | Larry Walter |
| 1940-1941 | Urban B. Hughes | 1974-1975 | W. E. "Gene" Taylor |
| 1941-1942 | J. Tom McGlothlin | 1975-1976 | Jerry E. Zoble |
| 1942-1943 | Dave C. Harrell | 1976-1977 | P. David Cate |
| 1943-1944 | K. K. "Bob" Spooner | 1977-1978 | Sarah Childress |
| 1944-1945 | L. R. McFarland | 1978-1979 | Les Aultman |
| 1945-1946 | J. B. Story | 1979-1980 | Philip R. Reeves |
| 1946-1947 | Frederic F. Mellen | 1980-1981 | Marshall Kern |
| 1947-1948 | H. Lee Spyres | 1981-1982 | Stephen Oivanki |
| | Robert D. Sprague | 1982- 1983 | James W. "Buddy" Twiner |
| 1948-1949 | Robert D. Sprague | 1983- 1984 | Charles H. Williams |
| 1949-1950 | E. T. "'Mike" Monsour | 1984- 1985 | C. Kip Ferns |
| 1950-1951 | J. Tate Clark | 1985-1986 | Steven S. Walkinshaw |
| | Charles E. Buck | 1986-1987 | J. R. "'Bob" White |
| 1951-1952 | George W. Field | 1987-1988 | Harry Spooner |
| 1952-1953 | James L. Md11in, Jr. | 1988-1989 | Stanley King |
| 1953-1954 | Wilbur H. Knight | 1989-1990 | Stan Galicki |
| 1954-1955 | A. Ed Blanton | 1990-1991 | E. James Files, Jr. |
| 1955-1956 | Gilbert A. Talley | 1991-1992 | Stephen L. Ingram, Sr. |
| 1956-1957 | Ben Ploch | 1992-1993 | Michael Noone/Stanley King |
| 1957-1958 | Emil Monsour | 1993-1994 | Brian Sims |
| 1958-1959 | Charles Brown | 1994-1995 | C. W. "Neil" Barnes |
| 1959-1960 | M. F. Kirby | 1995-1996 | Lester Aultman |
| 1960-1961 | Rudy Ewing | 1996-1997 | Jack S. Moody |
| 1961-1962 | Xavier M. Franscogna | 1997-1998 | George B. Vockroth |
| 1962-1963 | Robert B. Ross | 1998-1999 | Rick L. Ericksen |
| 1963-1964 | William A. Skees | 1999-2000 | Stanley King |
| | Marvin Oxley | 2000-2001 | John C. Marble |
| 1964-1965 | James F. Bollman | 2001-2002 | Andrew T. Sylte |
| 1965-1966 | Sankey L. Blanton | 2002-2003 | Aaron Lasker |
| 1966-1967 | Alan Jackson | 2003-2004 | John G. Cox |
| 1967-1968 | Julius M. Ridgway | 2004-2005 | James E. Starnes |
| 1968-1969 | Edward D. Minihan | 2005-2006 | Todd Hines |
| 1969-1970 | Kevin E. Cahill | 2006-2007 | Bob Schneeflock |
| 1970-1971 | John Lancaster | 2007-2008 | Tony Stuart |
| 1971-1972 | Larry Boland | 2008-2009 | Lisa Ivshin |
| 1972-1973 | Charles Barton | 2009-2010 | Joe Johnson |
| | | 2010-2011 | Brian Sims |
| | | 2011-2012 | Stanley King |
| | | 2012-2013 | Jim Files |
| | | 2013-2014 | Neil Barnes |
| | | 2014-2015 | Ezat Heydari |