

MISSISSIPPI GEOLOGICAL SOCIETY

eBULLETIN

Volume 67

No. 9

May 2019



BOLAND SCHOLARSHIP AWARDS

DUSTIN JOHNSON MEMORIAL AWARDS

THE MISSISSIPPI DIGITAL EARTH MODEL (MDEM)

Dr. David T. Dockery, RPG, Office of Geology



www.missgeo.com

2018-2019 MGS MEETING SCHEDULE

When	What/Who	Where
September 13, 2018	Fall BBQ	Jackson Yacht Club-5:30pm
October 11, 2018	Ezat Heydari and Kiana McFadden	River Hills – 11:30am
November 8, 2018	ENERGY & POWER: SUPPLY & DEMAND Todd “Ike” Kiefer	River Hills – 11:30am
	Merry Christmas	
January 10, 2019	Dr. James B. Harris—Millsaps College	River Hills – 11:30am
February 7, 2019	Jeannie Barlow, Ph.D. USGS—Hydrologist	River Hills – 11:30am
March 7, 2019	Patrick Sullivan Mississippi Energy Institute	River Hills – 11:30am
April 11, 2019	Boland Scholarship Awards Dustin Johnson Memorial Awards	River Hills – 11:30am
May 9, 2019	Spring Fling	Jackson Yacht Club– 5:30pm



OFFICERS MEETINGS

September 11, 2018
October 9, 2018
November 6, 2018
January 8, 2019
February 5, 2019
March 5, 2019
April 9, 2019
May 7, 2019



MGS 2018-2019 BOARD OF DIRECTORS

Officers

President	Dr David Dockery III	MDEQ	ddockery@mdeq.ms.gov	(601) 961-5171
1st Vice President	Jimmie Sparks	MDEQ	jsparks@mdeq.ms.gov	(601) 961-5171
2nd Vice President	Joe Johnson	Spooner Petroleum	jjohnson@spoonercompanies.com	(601) 969-1831
Treasurer	Paul Parrish	MDEQ	pparrish@mdeq.ms.gov	(601) 961-5171
Webmaster	Steve Walkinshaw	Vision Exploration	steve@visionexploration.com	(601) 607-3227
Advertising	Matt Caton	Tellus Operating	mcaton@tellusoperating.com	(601) 898-7444
Editor	Matt Caton	Tellus Operating	mcaton@tellusoperating.com	(601) 898-7444

Boland Scholarship

President	Jimmie Sparks	MDEQ	(601) 355-4530
Secretary	Neil Barnes	Strong Rock	
Members	Joe Johnson	Spooner Petroleum	(601) 969-1831
	Tony Stuart	Venture Oil & Gas	(601) 428-7725
	James Starnes	MDEQ	
	Bob Schneeflock	Geodigital Consulting	(601) 853-0701
	Dave Cate	Pruet Oil	
	David Hancock	Roundtree	

Honorary Membership

Chairman	Charles H. Williams, Jr. Vaughey & Vaughey	(601) 982-1212
Members	Dave Cate	(601) 718-9397
	Vaughn Watkins	(601) 898-9347

MGS Representatives

AAPG	Maurice Birdwell	Independent	(601) 936-6939
GCAGS	Danny Harrelson	U.S. Army R&D	(601) 634-2685

Other

Environmental	John Ryan	Allen	(601) 936-4440
Historian	Stanley King	Independent	(601) 842-3539



PRESIDENT'S LETTER

Dr. David T. Dockery III, RPG



In this last President's Letter of the 2018-2019 year for the Mississippi Geological Society, I thank MGS Officers, Vice President Jimmy Sparks, 2nd Vice President Joe Johnson, Treasurer Paul Parrish, Bulletin Editor/Advertising Matt Caton, and Webmaster Steve Walkinshaw, for their service. Joe Johnson will not be returning as an officer next year after a long tenure of service, including Treasurer in 2007, 1st Vice President in 2008, President in 2009, Editor in 2010-2011, and 2nd Vice President in 2012-2019, for a total of 13 straight years. We will be honoring Joe and Bill Bagnall with plaques of appreciation for their service at the Spring Fling this Thursday at the Jackson Yacht Club. Bill served as Treasurer from 2011 through September of 2018, a total of eight years. So, come out to the Spring Fling and help us show our appreciation to Joe and Bill.





2019 SPRING FLING SPONSORS

We also thank the sponsors of the Spring Fling as listed below.

Gold Level Sponsors

Pruett Oil Company, LLC.
Venture Oil and Gas, Inc.

Silver Level Sponsors

Roundtree and Associates, Inc.
Blair and Bondurant, P.A.

Bronze Level Sponsors

Coastal Exploration, Inc.
Marlin Exploration, LLC.
Spooner Petroleum Company
Plains Marketing, L.P.



SCHOLARSHIP AWARDS

CONGRATULATIONS TO THIS YEAR'S WINNERS!

Kelly Truax - Mississippi State University
Jordan Johnson - University of Mississippi
Sydney Kennedy - University of Southern Mississippi
Cooper Scott Cearley - Millsaps College
Emily Welch - Mississippi State University
Amber Morgan - University of Southern Mississippi

The winners were selected from an outstanding group of nominees. All nominees were selected by the faculty of each College or University.

The award for each scholarship is \$1,000.00 and was presented at the Thursday, April 11th meeting at River Hills Club at 11:30.





BOLAND SCHOLARSHIP AWARD

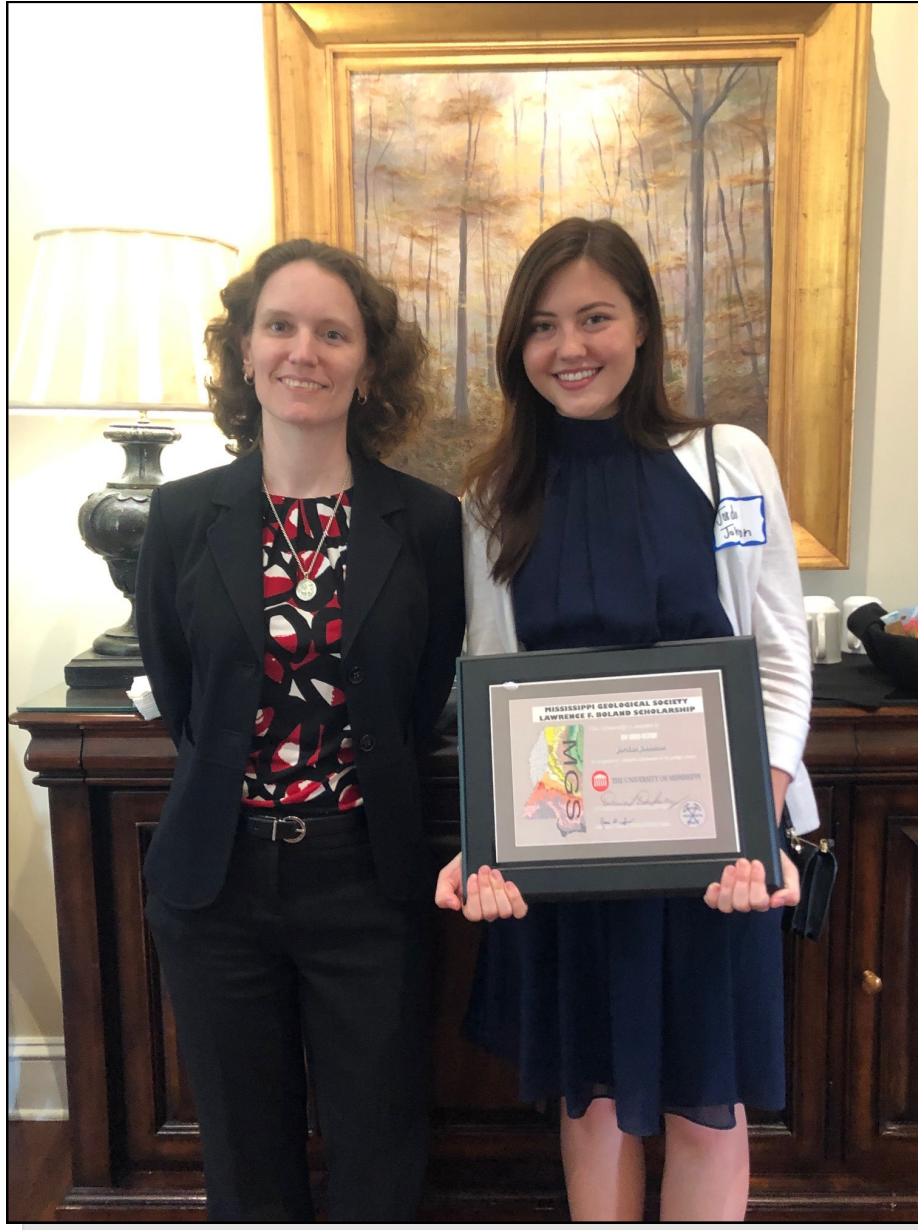


Kelly Truax, Mississippi State University

Kelly is a senior from Starkville with a cumulative 3.97 GPA and a 4.0 GPA in Geology. While at State, she has been on the President's List every semester. She also received a B.F.A. in Acting from Missouri State University.



BOLAND SCHOLARSHIP AWARD



Jordan Johnson, University of Mississippi

Jordan is a Senior from Hanceville, Alabama, with a cumulative 3.7 GPA and a 4.0 GPA in Geological Engineering. She will graduate in May of 2019.



BOLAND SCHOLARSHIP AWARD



THE UNIVERSITY OF
SOUTHERN
MISSISSIPPI



Sydney Kennedy, University of Southern Mississippi

Sydney is a Senior from Decatur, MS with a cumulative 4.0 GPA and 4.0 GPA in Geology. While at USM, she has been on the President's List every semester.



BOLAND SCHOLARSHIP AWARD

MILLSAPS COLLEGE



Cooper Scott Cearley, Millsaps College

Cooper is a Senior from Dallas, TX with a cumulative 3.3 GPA and a 3.9 GPA in Geology. His emphasis is in the field of Geophysics. He will receive his BS in May of 2019. He also has a minor in Math.



DUSTIN JOHNSON MEMORIAL AWARD



Emily Welch, Mississippi State University

Emily is a Senior from Columbia, MS and will receive her BS in Geology in 2019.



DUSTIN JOHNSON MEMORIAL AWARD



THE UNIVERSITY OF
SOUTHERN
MISSISSIPPI



Amber Morgan, University of Southern Mississippi

Amber is a Junior from Poplarville, MS and will receive her BS in Geology in 2019.



NEWS

MS Gem and Mineral Society

← → ↻ ⓘ Not secure | missgems.org 🔍 ☆

Mississippi Gem & Mineral Society

176 Tazan Avenue, Florence, Mississippi 39073-8720

- Home
- 2019 Gem, Mineral, Fossil & Jewelry Show in February
- Meetings
- Directions
- Lapidary School
- Membership
- Field Trips
- Classes and Newsletter
- Affiliations – AFMS & SFMS
- MGMS History – Some Highlights
- Contact Us




Home

The Mississippi Gem and Mineral Society (MGMS) was established to promote knowledge and the enjoyment of activities related to the earth sciences. MGMS activities focus on rocks, minerals, fossils, lapidary arts, and jewelry making.

It's amazing how diverse this rock hobby is. There's something for every interest and its a hobby that the entire family can enjoy together.

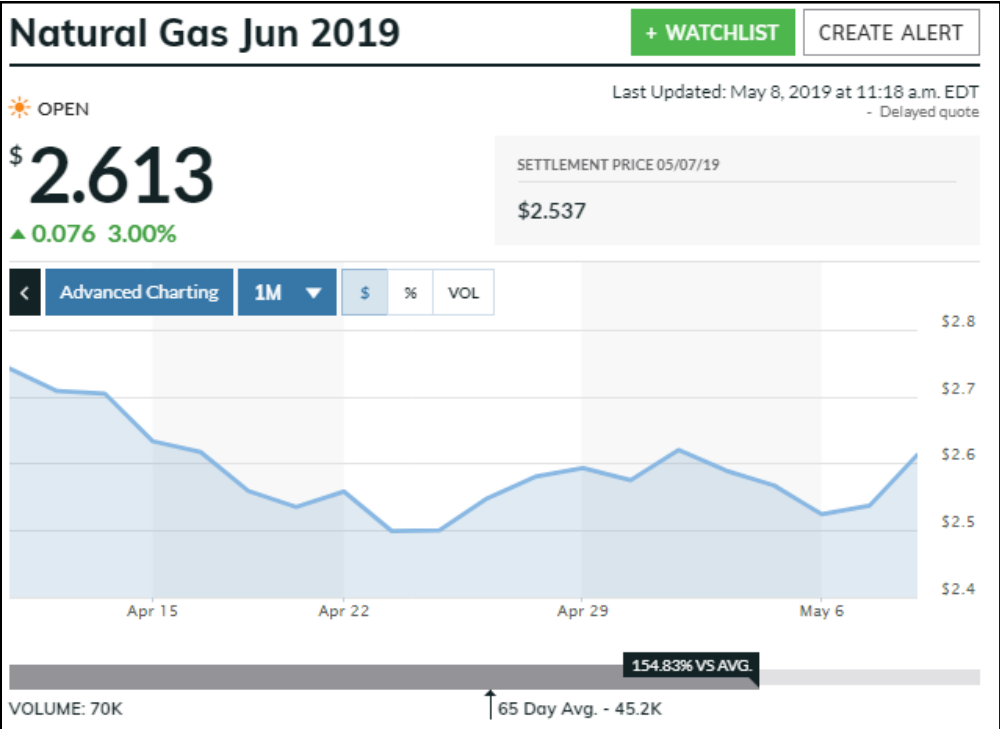
Visitors are always welcome to join us at one of our regular meetings held at our MGMS Lapidary School. We're located just a few miles south of the capitol city of Jackson at 176 Tazan Avenue, Florence, Mississippi.

Mississippi Gem & Mineral Society
.... Florence, Mississippi





CURRENT PRICES



Marketwatch





MONTHLY POST

Dr. David T. Dockery III RPG

THE MISSISSIPPI DIGITAL EARTH MODEL (MDEM)

David T. Dockery III, RPG, Barbara Yassin, GIS Analyst

The Mississippi Department of Environmental Quality, Office of Geology, Geospatial Resource Division (Steve Champlin, Division Director) is responsible for the Mississippi Digital Earth Model (MDEM) and work plans associated with it. MDEM is defined as a three-dimensional representation of natural and man-made features of Mississippi including the seven framework data elements defined by the Federal Geographic Data Committee (FGDC) – geodetic control, digital orthophotography, digital elevation model and contours, property ownership, hydrography, transportation, and governmental boundaries. MDEQ completed the original MDEM Conceptual Development Plan in 2002. MDEQ Office of Geology hosted recent meetings concerning the development of a scalable MDEM prototype website to optimize the use of MDEM data which has been developed to date and to utilize the best available technologies to expand public accessibility of MDEM data.

Maps are of great importance to geologists, engineers, and the public at large. Figure 1 is a map of a tract of land in Hinds County near Edwards, Mississippi.

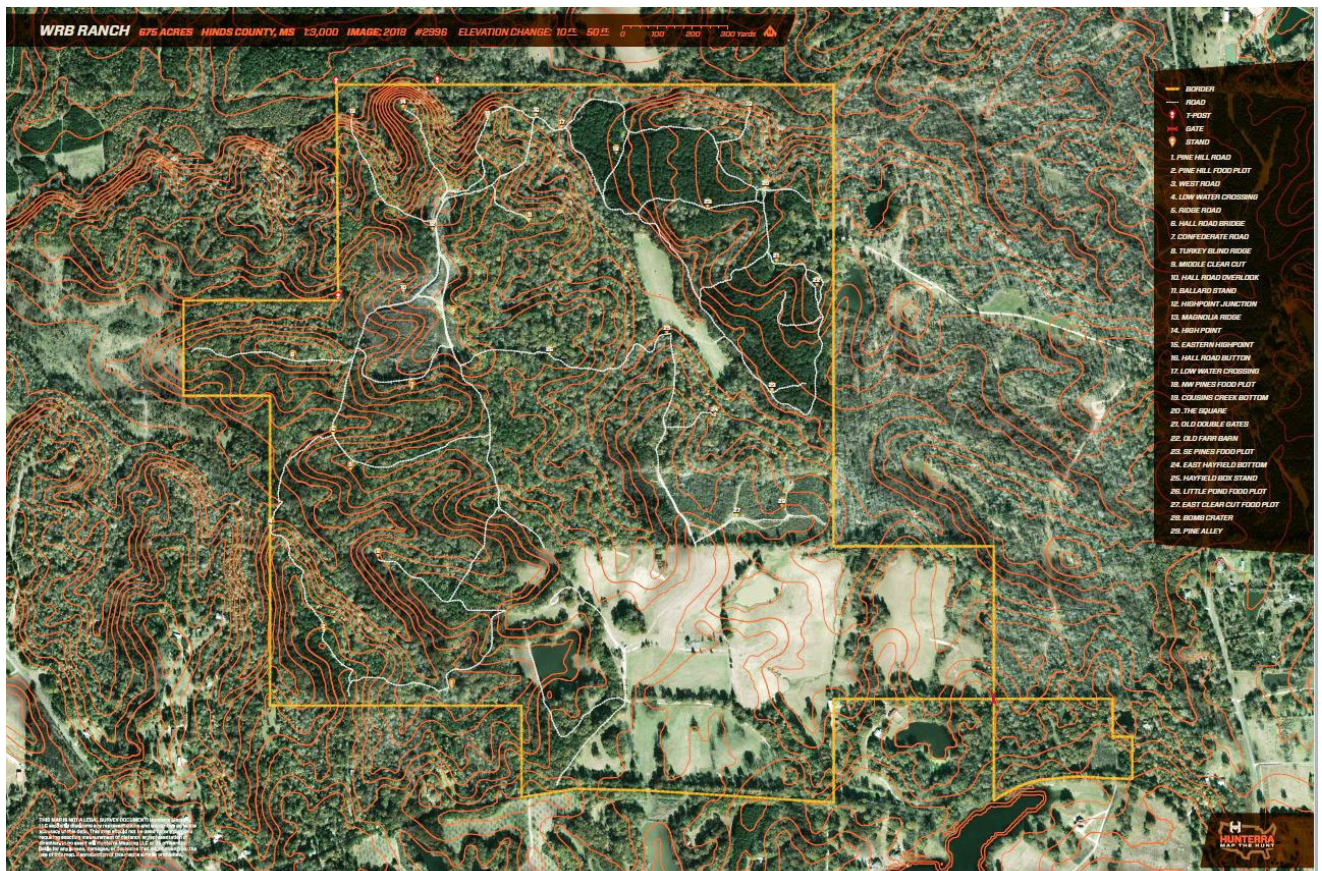


Figure 1. Hinds County property near Edwards, Mississippi, outlined in yellow.



MONTHLY POST

Dr. David T. Dockery III RPG

The property owner asked if we had more recent imagery than presented on this map (property lines in yellow), which he purchased from a map company. To answer that question, Barbara Yassin with our Geospatial Resources Division had to reverse engineer the map to find where the layers came from. The orthoimagery was left on and assumed to be from the National Agricultural Imagery Program (NAIP). The latest NAIP orthoimagery in Hinds County was from 2016. At middle right, Barb was able to match the 2016 NAIP orthoimagery with that of the map by matching cows (appear as small dots), standing in the same places, in both the left and right frames (Figure 2).

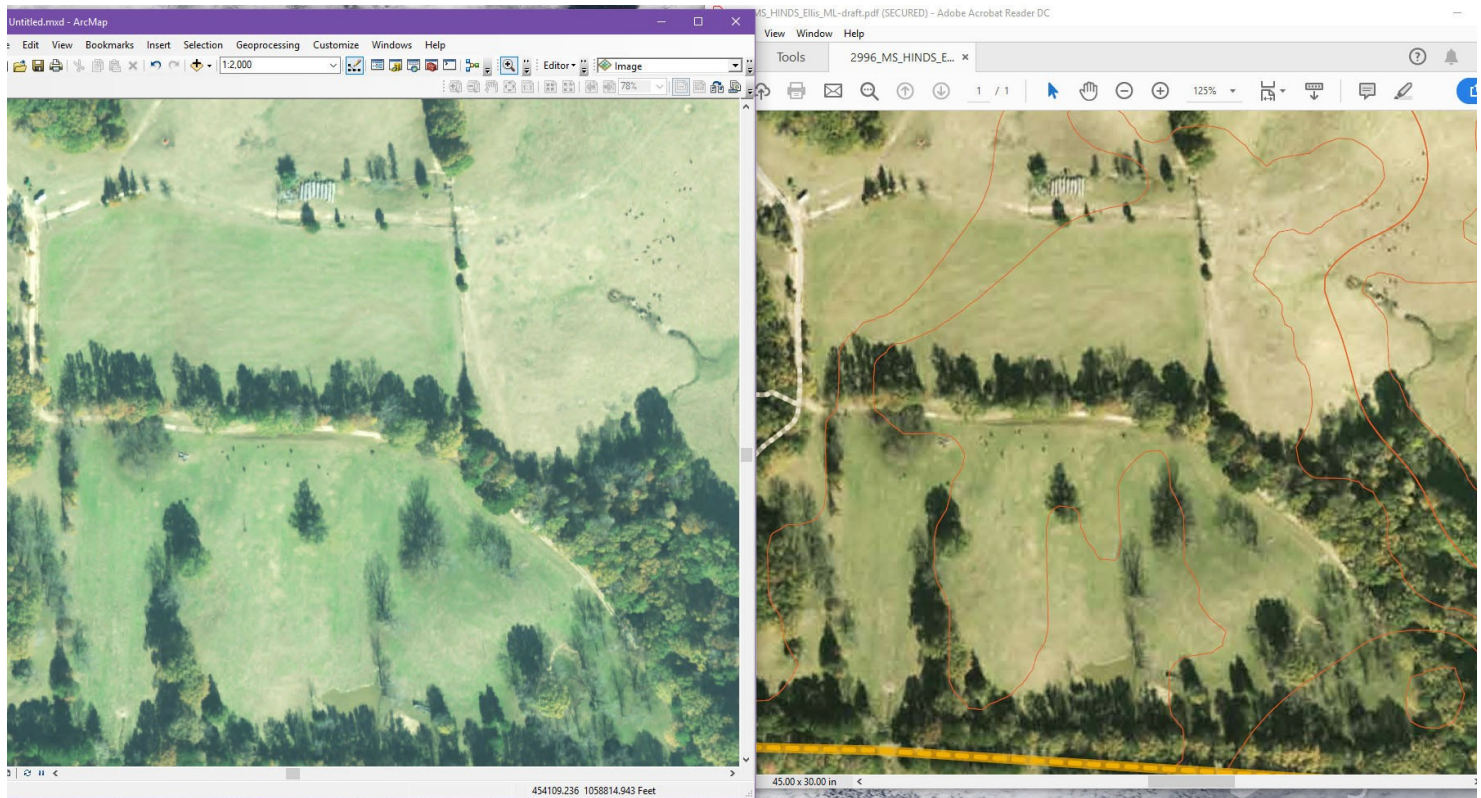


Figure 2. 2016 NAIP orthoimagery matched with that on purchased map at right, even to the placement of standing cattle.



MONTHLY POST

Dr. David T. Dockery III RPG

In Figure 3, Barb showed the difference between available MDEM 1-foot LiDAR contours (left frame) and those of the map (right frame). All our data and the data of the purchased map layers are available for free at the MARIS website <https://www.maris.state.ms.us/>.

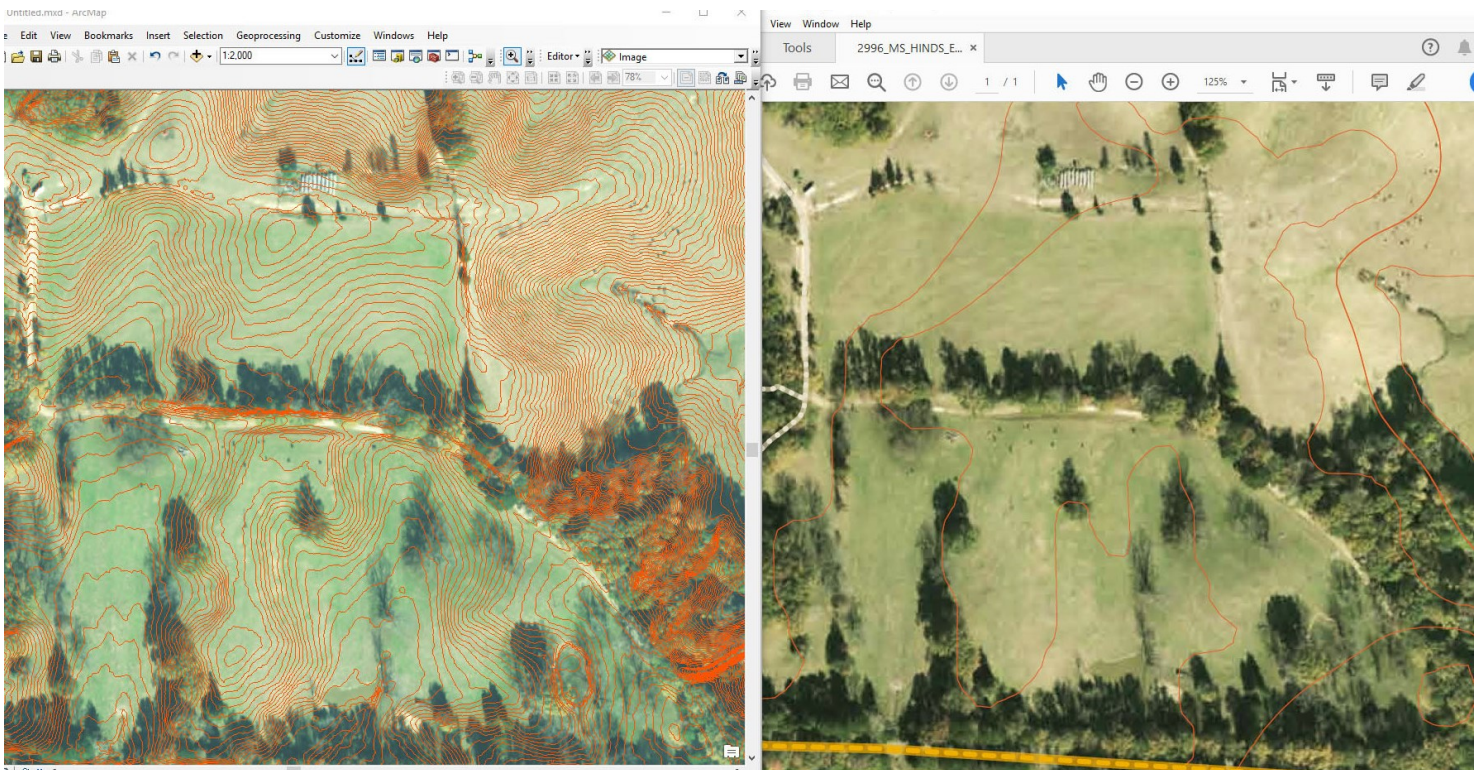


Figure 3. One-foot LiDAR contours at left compared to ten-foot contours of purchased map on right.



GEOLOGY POST

ARTICLES, PAPERS or NEWS?

ATTENTION!!!!!! Industry, Professors and Students:

I am looking for more content from the industry and our schools.

Submissions can include anything from professional papers, thesis abstracts, job opportunities, pictures, Anything!!!!

If you have any information or news you would like to share with the Society **PLEASE** email them to the MGS Editor at:

mcaton@tellusoperating.com

Thanks & Regards,

Matt Caton
Editor

GEO LINK POST

USGS TAPESTRY OF TIME AND TERRAIN <http://tapestry.usgs.gov> The CCGS is donating to all of the 5th and 6th grade schools in the Coastal Bend. Check it out—it is a spectacular map. You might want a framed one for your own office. The one in my office has glass and a metal frame, and it cost \$400 and it does not look as good as the ones we are giving to the schools. Call Owen 510-6224 if you want one for your office for \$150. Duncan, Mike, Chris, Dave, Bob Randy, Seb., Kevin, Ken, Craig, Patrick, Robert.

FREE TEXAS TOPO'S <http://www.tnris.state.tx.us/digital.htm> these are TIFF files from your state government that can be downloaded and printed. You can add them to SMT by converting them first in Globalmapper. Other digital data as well.

FREE NATIONAL TOPO'S [http://store.usgs.gov/b2c_usgs/b2c/start/\(xcm=r3standardpitrex_prd\)/.do](http://store.usgs.gov/b2c_usgs/b2c/start/(xcm=r3standardpitrex_prd)/.do) go to this webpage and look on the extreme right side to the box titled TOPO MAPS DOWNLOAD TOPO MAPS FREE.

<http://www.geographynetwork.com/> Go here and try their top 5 map services. My favorite is 'USGS Elevation Date.' Zoom in on your favorite places and see great shaded relief images. One of my favorites is the Great Sand Dunes National Park in south central Colorado. Nice Dunes.

<http://antwrp.gsfc.nasa.gov/apod/astropix.html> Astronomy picture of the day — awesome. I click this page everyday.

<http://www.spacimaging.com/gallery/ioweek/iow.htm> Amazing satellite images. Check out the gallery.

<http://www.ngdc.noaa.gov/seg/topo/globegal.shtml> More great maps to share with kids and students.

www.geo.org Don't forget we have our own web page.

<http://micro.magneet.fsu.edu/primer/java/scienceoptiscu/owersof10/>

<http://asterweb.jpl.nasa.gov/galery/default.htm> Great satellite images of volcanoes

<http://terra.nasa.gov/gallery/> More here

www.ermapper.com They have a great free downloadable viewer for TIFF and other graphic files called ER Viewer.

www.drillinginfo.com This is an incredible (subscription) well and completion data service for independents. Can be demo'ed for free.

<http://terraserver.com/> Go here to download free aerial photo images that can be plotted under your digital land and well data. Images down to 1 meter resolution, searchable by Lat Long coordinate. Useful for resolving well location questions.

<http://www.fs.fed.us/gpnl/volcanocams/msh/> This is a live cam of Mt. St. Helens refreshed every 5 minutes. At the bottom are old videos of past eruptions in this cycle. It is worth a watch especially now.



MGS HONORARY MEMBERS

Esther Applin*

Verne Culbertson *

David C. Harrell*

Dudley J. Hughes*

Walter P. Jones*

Winnie McGlammery*

Maurice E. Miesse*

Marvin E. Norman*

Thurston Connell Rader*

Henry Toler*

Charles H. Williams

David Cate

Bob Schneeflock

Paul Applin*

H. Leroy Francis*

Oleta R. Harrell*

Urban B. Hughes*

Harold Karges*

Thomas McGlothin*

Emil Monsour*

Marvin L. Oxley*

Baxter Smith*

H. Vaughn Watkins

Jerry Zoble

Stanley King

Lawrence F. Boland*

Jim Furrh*

Ralph Hines*

Wendell B. Johnson *

Wilbur H. Knight*

Frederic F. Mellen*

William H. Moore*

Richard R. Priddy*

Harry V. Spooner

Stewart W. Welch*

Julius Ridgeway

Dr. David T. Dockery III

*** deceased**

MEMBERSHIP APPLICATION / RENEWAL FORM

MISSISSIPPI GEOLOGICAL SOCIETY

P.O. BOX 422, JACKSON, MISSISSIPPI 39205-0422

2018-2019

Membership year is June through May

New Membership (\$20/yr)_____ Renewal (\$20/yr)_____ Student (FREE)_____ Associate (\$20/yr)_____

Boland Scholarship Fund Donation \$ _____ Total Amount Enclosed \$ _____

Last Name: _____ First: _____ MI: _____

Mailing Address: _____

Office Phone: _____ Home Phone: _____ FAX: _____

E-mail Address: _____

College/University Attended: _____

Degree(s) Obtained and Year(s) Awarded: _____

Professional Associations, Certifications, & Licenses: _____

MGS ADVERTISING ORDER FORM

September 2018 – May 2019

I. Bulletin Advertisements:

<u>Size</u>	<u>Rate/Year</u>	<u>Amt. Remitted</u>
Full Page Ad (6" x 8")	\$500	\$ _____
1/2 Page Ad (6" x 4")	\$300	\$ _____
1/4 Page Ad (3" x 4")	\$200	\$ _____
Business Card Ad (1 1/2" x 3")	\$100	\$ _____
Professional Listing (1/2" x 3")	\$ 50	\$ _____

II. Web Page Advertisements (www.missgeo.com):

<u>Type of Web Page Ad</u>	<u>Rate/Year</u>	<u>Amt. Remitted</u>
Front Page Sponsor (Banner Ad – limit of 5)	\$500	\$ _____
Second Page Banner Ad	\$250	\$ _____
Professional Listing/Link	\$100	\$ _____

(Note: Please contact Steve Walkinshaw at (601) 607-3227 or mail@visionexploration.com for details concerning placing your ad on the MGS web site.)

Total Remitted \$ _____

Please make checks payable to the Mississippi Geological Society. If you have any questions, contact Matt Caton at (601) 898-7444 or mcaton@tellusoperating.com

MILBIRD RESOURCES, LLC

Oil & Gas Exploration

Maurice N. Birdwell

Managing Partner

AAPG Certified Petroleum Geologist

Reg. Prof. Geol. Ark. La. Miss. Tex

2043 Oak Ridge Drive
Pearl, MS 39208

601.936.6939
mnbirdwell@comcast.net

BRUNINI

WATT'S C. UELTSCHHEY
ATTORNEY

OFFICE (601) 960.6871 FAX (601) 960.6902

E-MAIL WATTS@BRUNINI.COM | WWW.BRUNINI.COM

BRUNINI, GRANTHAM, GROWER, & HEWES, PLLC
ATTORNEYS AT LAW

190 EAST CAPITOL STREET SUITE 100 JACKSON, MS 39201
P.O. DRAWER 119 JACKSON, MS 39205

Joseph H. McDuff
Geologist



351 Chapel Loop
Mandeville, LA 70471
985.845.9430

jhmcduff@charter.net

VALIOSO

PETROLEUM CO., INC.

KARL J KAUFMANN

504 KEYWOOD CIRCLE
SUITE C
FLOWOOD, MS 39232

PHONE: 601-936-3601
CELL: 601-209-0948
valioso@bellsouth.net



MGS PAST PRESIDENTS

1939-1940	Henry N. Toler	1973-1974	Larry Walter
1940-1941	Urban B. Hughes	1974-1975	W. E. "Gene" Taylor
1941-1942	J. Tom McGlothlin	1975-1976	Jerry E. Zoble
1942-1943	Dave C. Harrell	1976-1977	P. David Cate
1943-1944	K. K. "Bob" Spooner	1977-1978	Sarah Childress
1944-1945	L. R. McFarland	1978-1979	Les Aultman
1945-1946	J. B. Story	1979-1980	Philip R. Reeves
1946-1947	Frederic F. Mellen	1980-1981	Marshall Kern
1947-1948	H. Lee Spyres	1981-1982	Stephen Oivanki
	Robert D. Sprague	1982- 1983	James W. "Buddy" Twiner
1948-1949	Robert D. Sprague	1983- 1984	Charles H. Williams
1949-1950	E. T. "'Mike" Monsour	1984- 1985	C. Kip Ferns
1950-1951	J. Tate Clark	1985-1986	Steven S. Walkinshaw
	Charles E. Buck	1986-1987	J. R. "'Bob" White
1951-1952	George W. Field	1987-1988	Harry Spooner
1952-1953	James L. Md11in, Jr.	1988-1989	Stanley King
1953-1954	Wilbur H. Knight	1989-1990	Stan Galicki
1954-1955	A. Ed Blanton	1990-1991	E. James Files, Jr.
1955-1956	Gilbert A. Talley	1991-1992	Stephen L. Ingram, Sr.
1956-1957	Ben Ploch	1992-1993	Michael Noone/Stanley King
1957-1958	Emil Monsour	1993-1994	Brian Sims
1958-1959	Charles Brown	1994-1995	C. W. "Neil" Barnes
1959-1960	M. F. Kirby	1995-1996	Lester Aultman
1960-1961	Rudy Ewing	1996-1997	Jack S. Moody
1961-1962	Xavier M. Franscogna	1997-1998	George B. Vockroth
1962-1963	Robert B. Ross	1998-1999	Rick L. Ericksen
1963-1964	William A. Skees	1999-2000	Stanley King
	Marvin Oxley	2000-2001	John C. Marble
1964-1965	James F. Bollman	2001-2002	Andrew T. Sylte
1965-1966	Sankey L. Blanton	2002-2003	Aaron Lasker
1966-1967	Alan Jackson	2003-2004	John G. Cox
1967-1968	Julius M. Ridgway	2004-2005	James E. Starnes
1968-1969	Edward D. Minihan	2005-2006	Todd Hines
1969-1970	Kevin E. Cahill	2006-2007	Bob Schneeflock
1970-1971	John Lancaster	2007-2008	Tony Stuart
1971-1972	Larry Boland	2008-2009	Lisa Ivshin
1972-1973	Charles Barton	2009-2010	Joe Johnson
		2010-2011	Brian Sims
		2011-2012	Stanley King
		2012-2013	Jim Files
		2013-2014	Neil Barnes
		2014-2015	Ezat Heydari
		2015-2016	Jack Moody
		2016-2017	Cragin Knox
		2017-2018	David Hancock