



Volume 61

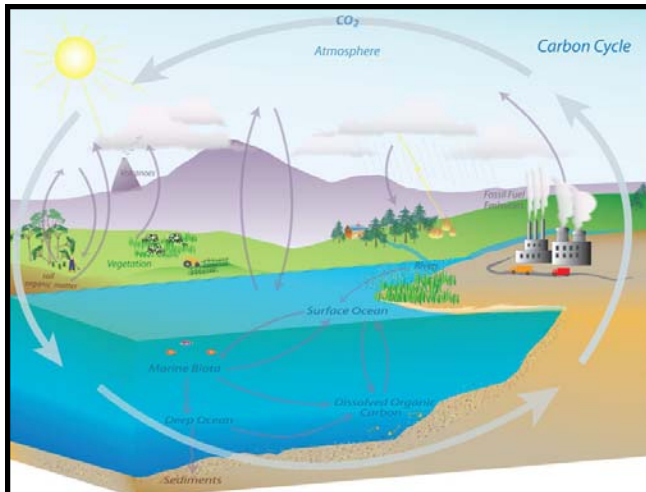
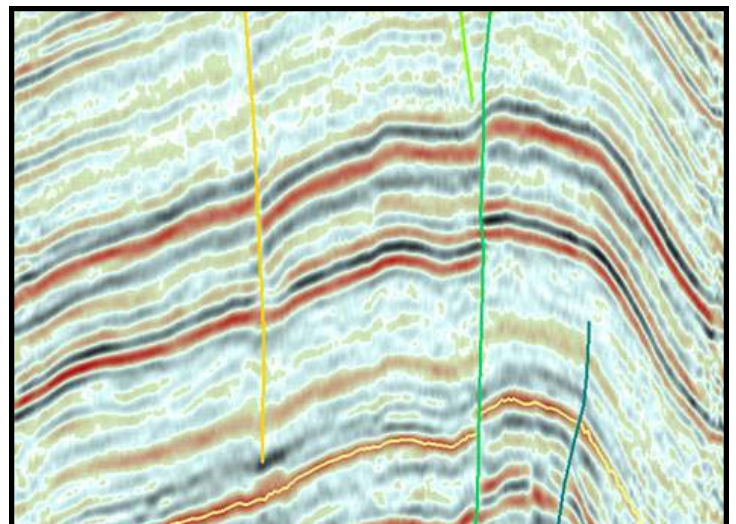
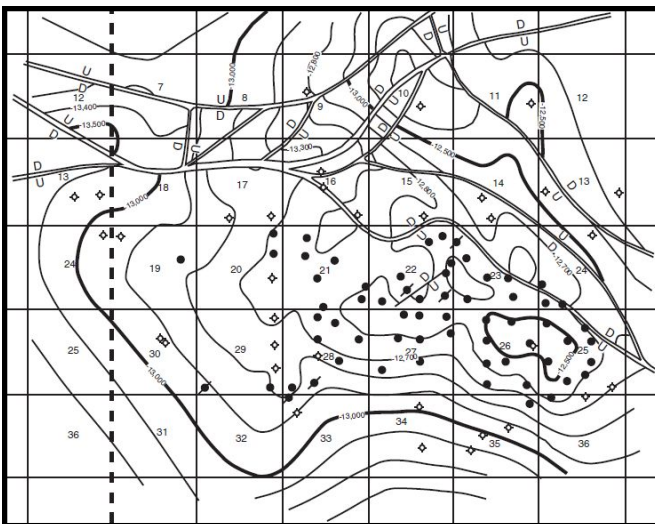
No. 9

May 2013

# MISSISSIPPI GEOLOGICAL SOCIETY

## eBULLETIN





# MGS 2012-2013 BOARD OF DIRECTORS

## *Officers*

<b>President</b>	Jim Files	Independent	<a href="mailto:jfgd@comcast.net">jfgd@comcast.net</a>	(601) 853-0701
<b>1st Vice President</b>	Neil Barnes	Tellus Operating	<a href="mailto:nbarnes@tellusoperating.com">nbarnes@tellusoperating.com</a>	(601) 898-7444
<b>2nd Vice President</b>	Joe Johnson	Tellus Operating	<a href="mailto:jjohnson@tellusoperating.com">jjohnson@tellusoperating.com</a>	(601) 898-7444
<b>Secretary</b>	Todd Hines	Moon-Hines	<a href="mailto:thines1360@aol.com">thines1360@aol.com</a>	(601) 572-8300
<b>Treasurer</b>	Bill Bagnall	BLM	<a href="mailto:wbagnall@blm.gov">wbagnall@blm.gov</a>	(601)-977-5417
<b>Webmaster</b>	Steve Walkinshaw	Vision Exploration	<a href="mailto:steve@visionexploration.com">steve@visionexploration.com</a>	(601) 607-3227
<b>Advertising</b>	Matt Caton	Tellus Operating	<a href="mailto:mcaton@tellusoperating.com">mcaton@tellusoperating.com</a>	(601) 898-7444
<b>Editor</b>	Matt Caton	Tellus Operating	<a href="mailto:mgs@treetop.us.com">mgs@treetop.us.com</a>	(601) 898-7444

## *Boland Scholarship*

<b>President</b>	Neil Barnes	Tellus Operating	(601) 898-7444
<b>Secretary</b>	Dave Cate	Pruet Oil	(601) 948-5279
<b>Members</b>	Joe Johnson	Tellus Operating	(601) 898-7444
	Tony Stuart	Venture Oil & Gas	(601) 428-7725
	James Starnes	DEQ	
	Bob Schneeflock	Geodigital Consulting	(601) 853-0701

## *Honorary Membership*

<b>Chairman</b>	Charles H. Williams, Jr. Vaughey & Vaughey		(601) 982-1212
<b>Members</b>	Dudley J. Hughes	Hughes South Corp.	(601) 420-9892
	E. Ralph Hines	Moon-Hines	(601) 572-8300
	Jerry Zoble	Independent	

## *MGS Representatives*

<b>AAPG</b>	Maurice Birdwell	Independent	(601) 936-6939
<b>GCAGS</b>	Danny Harrelson	U.S. Army R&D	(601) 634-2685

## *Other*

<b>Environmental</b>	Ken Ruckstuhl	Environmental Mgt.	(601) 992-8233
<b>Historian</b>	Stanley King	Independent	(601) 842-3539



# PRESIDENT'S LETTER

*Jim Files*

MGS Members,

Ok, we all have those kinds of days. Like last Saturday when we are keeping two of our Grandchildren, ages four and seven. The seven year old, meaning only to help, hurriedly closes an interior door on my hand. Now, let me explain, he did not do this on purpose. Also, there is a big difference whether your hand in is near the latch side or the hinge side of the door. I would choose latch side, but it was near the hinge, which reminds me of physics and the idea of a fulcrum. Very painful. So I move outside for a project, where my Son is helping me build a barn. I was not paying any attention to his Border collie or mine who were “sparring” should we say. Big mistake. When I had last seen them, out of the corner of my eye, they were twenty feet away, but spinning like a tornado. The end result, they crashed into my left ankle and I felt a sharp pain there. Lucky I had jeans on, but had a nice puncher wound just the same. Bitten probably by my own dog! I’m starting to think being a “couch potato” might not be so bad. I was also thinking I am safer at the office in front of my computer. Wonderful weekend!

I would like to thank the officers of the MGS for a fun year and have enjoyed their company. I look forward to seeing you this coming Thursday at the Jackson Yacht Club for the annual Spring Fling. Thanks to good donations for this year’s spring event, the officers agreed to reward us with door prizes this year. There are two catches:

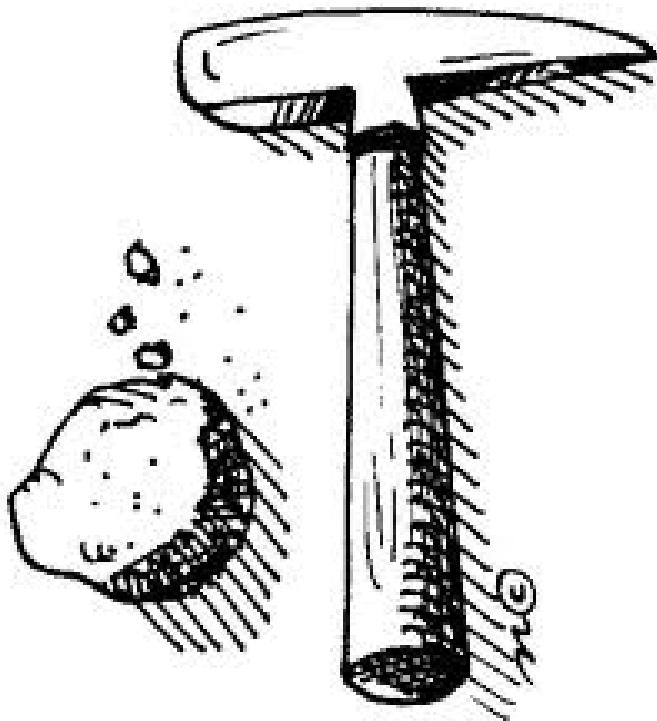
- 1) you must be present to win and
- 2) you must be a lady. So ladies get there to win!

See you there,

Jim

# MGS MEETING SCHEDULE

When	What/Who	Where
September 13, 2012	Fall BBQ	Jackson Yacht Club-5:30pm
October 4, 2012	Steve Walkinshaw The Lower Brown Dense Lime Trend	River Hills – 11:30am
November 8, 2012	<b>Morgan Brown</b> Prestack Depth Migration for “Easy” Onshore Plays	River Hills – 11:30am
December 1, 2012	Christmas Party and Dance	Colonial Country Club
January 10, 2013	Dr. Lesli Wood Tuscaloosa Depositional Systems	River Hills – 11:30am
February 14, 2013	Kirk Barrell Tuscaloosa Marine Shale	River Hills – 11:30am
March 14, 2013	David Dockery Mississippi fossils as illustrated in “ <i>The Geology of Mississippi</i> ”	River Hills – 11:30am
April 11, 2013	Boland Scholarship Awards	River Hills – 11:30am
<b>May 9, 2013</b>	<b>Spring Fling</b>	<b>Jackson Yacht Club 5:30pm</b>



## OFFICERS MEETINGS

August 4, 2012
September 6, 2012
September 27, 2012
November 1, 2012
December 6, 2012
January 3, 2013
February 7, 2013
March 7, 2013
April 4, 2013
<b>May 2, 2013</b>



# BOLAND SCHOLARSHIP



## 2012 – 2013 MGS BOLAND SCHOLARSHIP RECIPIENTS

The Mississippi Geological Society awarded its annual L. F. Boland Scholarship to four students at the April 11 meeting. This foursome makes a total of 121 students to be honored by the Society for outstanding achievements in the geoscience field since the awards began in 1982-1983. The students were each awarded \$1,000 and a framed certificate denoting their achievement.



**Russell Anderson – University of Southern Mississippi.** Russell is from Sandy Hook, Mississippi and a Senior to graduate this year with a GPA of 3.62 in his Geology major. He plans to pursue a M. S. degree at USM with a career interest in environmental geology. He is on the Dean's List and is the current recipient of the McCarty Geology Honors Scholarship at USM. Russell is the current President of the Southern Geological Society and a student member of AEG. He is currently a part time student worker for the USM Academic Council.



**Courtney Ash – University of Mississippi.** Courtney is from Athens, Alabama and a Senior to graduate this year with a GPA of 3.79 in her Geological Engineering major. She is considering either graduate school or immediate entry into the petroleum business. She is currently a Teaching Assistant for historical and physical geology labs in the Department. She was awarded the Outstanding Geology and Geological Engineering Student awards in her freshman and sophomore years. Courtney is active in the Ole Miss Geological Society and various volunteer groups including Gallant Heart Guide Dogs.



**Danielle Merritt – Mississippi State University.** Danielle is from Columbus, Mississippi and a Junior to graduate in May, 2014 with dual degrees in Geosciences and Biological Sciences with a minor in Chemistry. She has a 3.5 GPA in her majors and has a future interest in research and teaching. She plans to attend graduate school with a main interest in Geomicrobiology at this time. Danielle is a President's Scholar at MSU and an undergrad worker in the Biochemistry and Geoscience Research Group at MSU. She is a current member of the GSA and American Society for Microbiology.



**Cody Strack – Millsaps College.** Cody is from Ridgeland, Mississippi and is a Senior to graduate this summer with a B. S. in Geology. He currently has a 3.93 GPA in his geology major and plans to attend graduate school at the University of Ohio to study igneous and metamorphic petrology for a possible career in mining geology. Prior to Millsaps, Cody was a Phi Theta Kappa Honor student at Holmes CC. Cody is working his way through school and is currently a Sales Assoc. at Buffalo Peak in addition to being a full time student.



# **BOLAND SCHOLARSHIP DONATIONS**

MGS would like to thank the following individuals for their generous donations to the 2013 Boland Scholarship Fund.

**Maurice Birdwell**

**Ken McCarley**

**George Smith**

**Maurice Meylan**

**Terry Bryant**

**Jim Michael**

**Chris Franks**

**Meade Hufford**

**Dave Cate**

**Jak Douglas**

**Paul Gribas**

**Joseph Boland**

**Liz Patterson**



# 2013 SPRING FLING

MGS would like to thank the following companies for their generous donations to the 2013 Spring Fling!

## GOLD

**W.T. Drilling Company, Inc.**

**Mosbacher Energy Company**

**Spooner Energy, Inc.**

**Blair & Bondurant, P.A.**

**Tellus Operating Company, LLC**

**Pruet Oil Company, LLC**

## SILVER

**Moon-Hines-Tigrett Operating, Inc.**

**Energy Drilling Company**

**Roundtree & Associates**

**Palmer Petroleum, Inc.**

**Seitel Management, Inc.**

## BRONZE

**Boone Exploration, Inc.**

**McDavid, Noblin & West PLLC**

**Coastal Exploration, Inc.**

**Brunini, Grantham, Grower & Hewes PLLC**



# INFORMATION

## *Oil Industry on Alert*



Earlier this month, the tropical storm forecasting team of Philip J. Klotzbach and William M. Gray, professors in the Department of Atmospheric Science at Colorado State University (CSU), released their first forecast for the upcoming hurricane season. They are calling for the season to experience "enhanced activity compared with the 1981-2010 climatology," meaning it will be an active storm season. Furthermore, the forecasters "anticipate an above-average probability for major hurricanes making landfall along the United States coastline and in the Caribbean." In other words, be prepared.

Based on the work the tropical storm forecasting team has done in conjunction with the GeoGraphics Laboratory at Bridgewater State University in Massachusetts, the model predicts that there is a 72% probability of a major hurricane making landfall along the entire U.S. coastline compared to a 52% average for the past century. For the U.S. East Coast including the Florida Peninsula, the probability of landfall is 48% versus a 31% historic record. For the Gulf Coast from the Florida Peninsula to Brownsville, Texas, the probability is 47% compared to a 30% record. The model also estimates that the Caribbean has a 61% probability versus 42% historically of experiencing a major hurricane landfall. These higher than historic probabilities will have the U.S. petroleum industry on alert during the upcoming season although even with a very low probability it only takes one storm to create serious disruption and economic hardship.

The CSU forecasters are using a relatively new April forecasting model that employs four predictors they have found to have an above-average predictive value. This is the third year the forecasters have used this model, which is built on data from 1982-2010. The model incorporates the most recent and reliable data available, which the forecasters believe helps improve the model's predictive ability. They said these four predictors helped the model to correlate with the Net Tropical Cyclone Activity (NTC) at 0.79 when all years studied are included. A drop-one cross-validation analysis yields a correlation with the NTC of 0.68. This is a more realistic view of the skill the model will have in future years. The forecasters say that this model correctly predicted above- or below-average seasons in 22 out of 31 hindcast years, a 71% average. The model's predictions have had a smaller error than climatology in 19 of 31 years for a 61% average. The predictors used in the model include the average sea surface temperature (SST) in the Atlantic basin in the January to March period, the sea level pressure (SLP) for March in the central Atlantic Basin and the February to March SLP in the Pacific Ocean region off South America, and the European Centre for Medium-Range Weather Forecast (ECMWF) of the SLP in the Pacific Ocean along the Equator.





# **MGS - J. Ishe Fund**

Many thanks to the following people who have made generous contributions to the MGS - J Ishe Fund:

**H. Vaughn Watkins**

**David K. Hancock**

**Lars Johnson**

**Paul J. Gribas**

**Armando Ricci**

**Maurice Birdwell**

**Pruet Oil Company LLC**

**Moon & Hines, LLC**

If you would like to make a donation you can mail your contribution to the following address:

**Mississippi Geological Society  
J. Ishe Fund  
PO Box 422  
Jackson, MS 39205-0422**



# ARTICLE OF THE MONTH

## *Study: Oil, Gas Industry Needs to Step Up Water Management*



The oil and gas industry needs to step up efforts to expand its use of recycled water and non-freshwater resources and implement better water management planning if shale energy production is to expand according to projections.

Research conducted by San Francisco-based CERES indicates that nearly 47 percent of wells were developed in water basins with high or extremely high water stress. Most of the hydraulic fracturing activity in the United States is occurring in Texas and Colorado, which are experiencing prolonged drought conditions.

The report is based on well drilling and water use data from FracFocus.org and water stress indicator maps developed by the World Resources Institute. The research was based on FracFocus' data on 25,450 wells in operation from January 2011 through September 2012.

Ninety-two percent of Colorado wells analyzed in the report are in extremely high water stress regions. In Texas, which accounts for nearly half of the total wells analyzed, 51 percent of the wells were in high or extremely high water stress regions. Water use in hydraulic fracturing in some Texas counties accounted for over 20 percent of the region's total water use. Concerns over water usage for hydraulic fracturing in Texas prompted [legislators to mandate water recycling](#) in the oil and gas industry.

Seventy percent of the wells analyzed in Pennsylvania were in medium to high water stress water basins and only 2 percent were in high water stress basins.

"Given projected sharp increases in shale oil and gas production in the coming years, competition over water should be a growing concern to energy companies," CERES concluded in the report, noting that hydraulically fractured oil and gas production is expected to double in the coming years. "Shale energy development cannot grow without water, but in order to do so the industry's water needs and impacts need to be better understood, measured and managed."

The industry has made progress in increasing its use of recycled water and other alternative water sources for fracturing wells, including non-freshwater alternatives such as wastewater, saline water, seawater and acid-mine drainage. But overall water recycling and use of non-freshwater sources must rise considerably to have a significant impact.



## ARTICLE CONTINUED.....

### *Study: Oil, Gas Industry Needs to Step Up Water Management*

Key recommendations by CERES for companies and regulators include:

- Comprehensive mandatory disclosure by companies of how much freshwater, non-freshwater and recycled water they are using region by region as well as how much water is returning to the surface and where it is ending up
- Requirements for companies to set quantifiable water use targets, such as recycling and non-freshwater use targets
- Ensure that companies and local regulators are conducting sufficient water management planning
- Ensure companies have a local stakeholder engagement process in place on water issues

The U.S. oil and gas industry's increased exploration and production of U.S. unconventional resources has increased the amount of water being used by the oil and gas industry in its operations.

Best [practices for water management in unconventional exploration and production activity are still evolving](#) as companies address water use management issues such as the cost of transporting water to drilling sites, whether to treat or dispose of water, and concerns by environmental groups, state officials and the U.S. public over the amount of water used and the impact of hydraulic fracturing on water supply in shale regions.

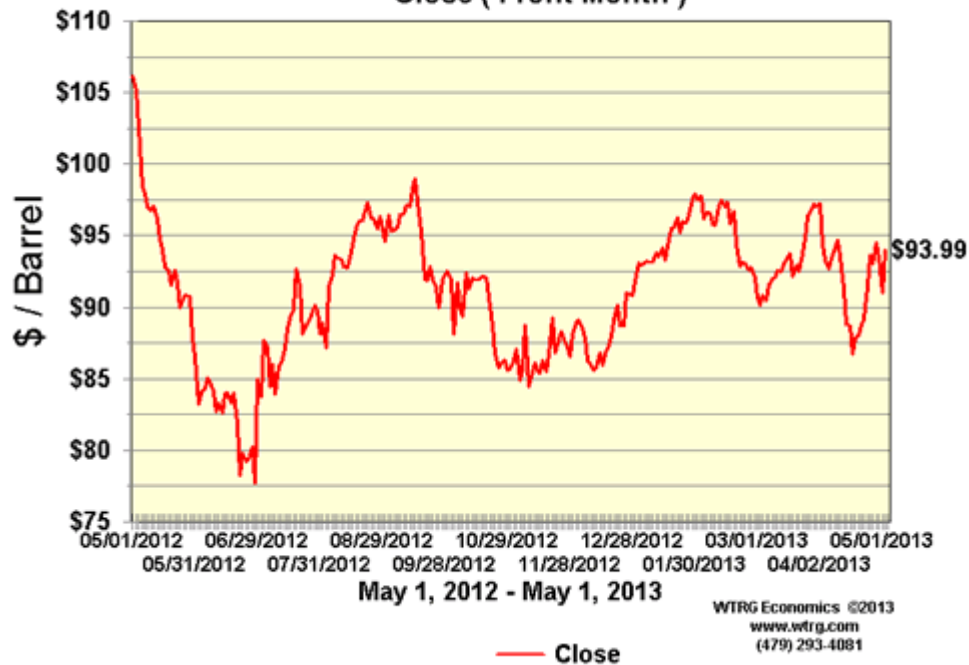
A number of water treatment processes are also becoming available to the oil and gas industry, including [EcoLogix](#) and [EcoSphere](#), which Rigzone reported on last year.



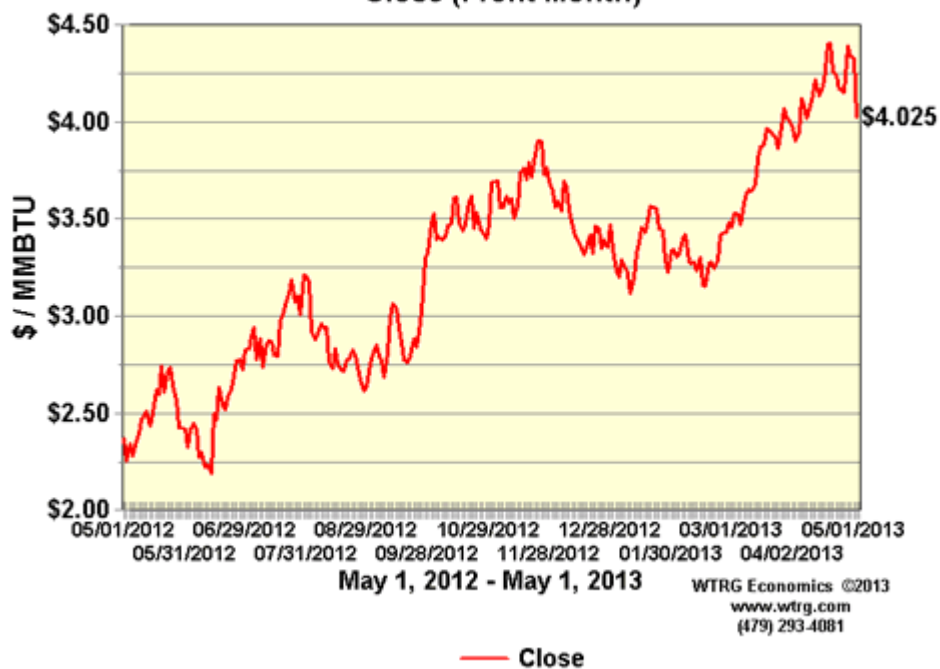


# FUTURES

**NYMEX Crude Oil Futures  
Close ( Front Month )**



**NYMEX Natural Gas Futures  
Close (Front Month)**





# NEWS

## MDEQ



The Mississippi Department of Environmental Quality (MDEQ) would like everyone to know they have started putting old Survey Bulletins online. These Bulletins are available through:

<http://www.deq.state.ms.us>

Below is a list of sample links you can copy/paste into your browser.

[http://www.deq.state.ms.us/MDEQ.nsf/page/Geology\\_Bulletin131ATLASOFSHALLOWMISSISSIPPISALTDOMES?OpenDocument](http://www.deq.state.ms.us/MDEQ.nsf/page/Geology_Bulletin131ATLASOFSHALLOWMISSISSIPPISALTDOMES?OpenDocument)

[http://www.deq.state.ms.us/MDEQ.nsf/page/Geology\\_Bulletin129StreptoneuranGastropodsTheCoffee\\_SandCampanianNEMS?OpenDocument](http://www.deq.state.ms.us/MDEQ.nsf/page/Geology_Bulletin129StreptoneuranGastropodsTheCoffee_SandCampanianNEMS?OpenDocument)

[http://www.deq.state.ms.us/MDEQ.nsf/pdf/Geology\\_Bulletin125/\\$File/Bulletin%20125.pdf?OpenElement](http://www.deq.state.ms.us/MDEQ.nsf/pdf/Geology_Bulletin125/$File/Bulletin%20125.pdf?OpenElement)

[http://www.deq.state.ms.us/MDEQ.nsf/page/Geology\\_Bulletin123?OpenDocument](http://www.deq.state.ms.us/MDEQ.nsf/page/Geology_Bulletin123?OpenDocument)

[http://www.deq.state.ms.us/MDEQ.nsf/page/Geology\\_Bulletin100?OpenDocument](http://www.deq.state.ms.us/MDEQ.nsf/page/Geology_Bulletin100?OpenDocument)

[http://www.deq.state.ms.us/MDEQ.nsf/page/Geology\\_Bulletin23PaleozoicRocks?OpenDocument](http://www.deq.state.ms.us/MDEQ.nsf/page/Geology_Bulletin23PaleozoicRocks?OpenDocument)

[http://www.deq.state.ms.us/MDEQ.nsf/page/Geology\\_Circular-RocksAndFossilsFoundInMississippiGravelDeposits?OpenDocument](http://www.deq.state.ms.us/MDEQ.nsf/page/Geology_Circular-RocksAndFossilsFoundInMississippiGravelDeposits?OpenDocument)

[http://www.deq.state.ms.us/MDEQ.nsf/page/Geology\\_Circular-WindowsIntoMississippi%E2%80%99sGeologicalPast?OpenDocument](http://www.deq.state.ms.us/MDEQ.nsf/page/Geology_Circular-WindowsIntoMississippi%E2%80%99sGeologicalPast?OpenDocument)

## Future Meetings of Selected Earth Science Organizations

EVENT	2011	2012	2013	2014	2015
AAPG Annual Convention & Exhibition (ACE)	10–13 April Houston, TX	22–25 April Long Beach, CA	19–22 May Pittsburgh, PA	6–9 April Houston, TX	31 May–3 June Denver, CO
AAPG International Conference & Exhibition (ICE)	23–26 October Milan, Italy	September Singapore	8–11 September Cartagena, Colombia		
AAPG Prospect & Property Expo-London (APPEX)	1–3 March London, UK	6–8 March London, UK			
AAPG Annual Leadership Conference	12–14 August Boulder, CO				
AAPG Foundation Trustee Associates	7–11 September Lake Tahoe, CA	28 Oct–1 Nov Scottsdale, AZ			
AAPG European Region Conference					
AAPG Eastern Section	25–27 September Washington, D.C.	22–26 September Cleveland, OH			
AAPG Gulf Coast Section (GCAGS)	16–19 October Veracruz, Mexico	21–23 October Austin, TX	Sept–Oct TBD New Orleans, LA	Sept–Oct TBD Lafayette, LA	Sept–Oct TBD Houston, TX
AAPG Mid-Continent Section	1–4 October Oklahoma City, OK				
AAPG Pacific Section	9–11 May Anchorage, AK	22–25 April Long Beach, CA			
AAPG Rocky Mountain Section (RMS)	26–29 June Cheyenne, WY	9–12 September Grand Junction, CO	TBD Salt Lake City, UT	TBD Denver, CO	
AAPG Southwest Section	5–7 June Ruidoso, NM	19–22 May Ft. Worth, TX			
AAPG Polar Petroleum Potential (3P)	30 Aug–2 Sept Halifax, Nova Scotia				
American Association of Petroleum Landmen (AAPL) Annual Meeting	8–11 June Boston, MA				
Arctic Technology Conference (OTC) <i>New!</i>	7–9 February Houston, TX	3–5 December Houston, TX			
Asia Pacific Oil & Gas Conference (SPE)	20–22 September Jakarta, Indonesia	22–24 October Perth, Australia			
Association of Environmental & Engineering Geologists (AEG)	19–24 September Anchorage, AK	TBD Salt Lake City, UT	TBD Seattle, WA		
Canadian Society of Petroleum Geologists (CSPG), Canadian Society of Exploration Geoscientists (CSEG), & Canadian Well Logging Society (CWLS)	9–13 May Calgary, AB, Canada				
European Assoc. of Geoscientists and Engineers (EAGE)	23–26 May Vienna, Austria	4–7 June Copenhagen, Denmark	9–14 June London, UK		
GEO India — South Asian Geosciences Conference & Exhibition	12–14 January New Delhi, India	Not Held			
GEO Middle East Geosciences Conference and Exhibition	Not Held	4–7 March Bahrain	Not Held		
Geological Assoc. of Canada/ Mineralogical Assoc. of Canada Annual Meeting	25–27 May Ottawa, ON, Canada	27–29 May St. John's, NL, Canada	22–24 May Winnipeg, MB, Canada		
Geological Society of America (GSA)	9–12 October Minneapolis, MN	4–7 November Charlotte, NC	27–30 October Denver, CO		
IPTC – International Petroleum Technology Conference (AAPG/EAGE/SEG/SPE)	15–17 November Bangkok, Thailand	5–7 December Beijing, China	2–4 December Doha, Qatar	TBD Kuala Lumpur, Malaysia	
National Association of Black Geologists & Geophysicist (NABGG)	7–10 September San Francisco, CA				
NAPE – North American Prospect Expo (AAPL) – Winter	16–18 February Houston, TX	22–24 February Houston, TX			
NAPE – North American Prospect Expo (AAPL) – Summer	17–19 August Houston, TX				
OTC – Offshore Technology Conference (SPE)	2–5 May Houston, TX	30 April–3 May Houston, TX	6–9 May Houston, TX	5–8 May Houston, TX	
PETEX (PESGB)	Not Held				
Society of Exploration Geophysicists (SEG)	18–23 September San Antonio, TX	4–9 November Las Vegas, NV	22–27 September Houston, TX	26–31 October Denver, CO	
Society of Independent Earth Scientists (SIPES)	20–23 June Jackson Hole, WY				
Society of Petroleum Engineers (SPE)	30 Oct–2 Nov Denver, CO	8–10 October San Antonio, TX	30 Sept–2 Oct New Orleans, LA		
Society of Professional Well Log Analysts (SPWLA)	14–18 May Colorado Springs, CO				

Shaded boxes indicate that all aspects of meeting are managed by the American Association of Petroleum Geologists  
Global Development and Conventions Department  
P.O. Box 979, Tulsa, Oklahoma 74101-0979 USA +1 918 560 2679  
Updated 14 July 2011 / Dates are subject to change

# GEO LINK POST

**USGS TAPESTRY OF TIME AND TERRAIN** <http://tapestry.usgs.gov> The CCGS is donating to all of the 5th and 6th grade schools in the Coastal Bend. Check it out—it is a spectacular map. You might want a framed one for your own office. The one in my office has glass and a metal frame, and it cost \$400 and it does not look as good as the ones we are giving to the schools. Call Owen 510-6224 if you want one for your office for \$150. Duncan, Mike, Chris, Dave, Bob Randy, Seb., Kevin, Ken, Craig, Patrick, Robert.

**FREE TEXAS TOPO'S** <http://www.tnris.state.tx.us/digital.htm> these are TIFF files from your state government that can be downloaded and printed. You can add them to SMT by converting them first in Globalmapper. Other digital data as well.

**FREE NATIONAL TOPO'S** [http://store.usgs.gov/b2c\\_usgs/b2c/start/\(xcm=r3standardpitrex\\_prd\)/.do](http://store.usgs.gov/b2c_usgs/b2c/start/(xcm=r3standardpitrex_prd)/.do) go to this webpage and look on the extreme right side to the box titled TOPO MAPS DOWNLOAD TOPO MAPS FREE.

<http://www.geographynetwork.com/> Go here and try their top 5 map services. My favorite is 'USGS Elevation Date.' Zoom in on your favorite places and see great shaded relief images. One of my favorites is the Great Sand Dunes National Park in south central Colorado. Nice Dunes.

<http://antwrp.gsfc.nasa.gov/apod/astropix.html> Astronomy picture of the day — awesome. I click this page everyday.

<http://www.spacimaging.com/gallery/ioweek/iow.htm> Amazing satellite images. Check out the gallery.

<http://www.ngdc.noaa.gov/seg/topo/globegal.shtml> More great maps to share with kids and students.

[www.geo.org](http://www.geo.org) Don't forget we have our own web page.

<http://micro.magneet.fsu.edu/primer/java/scienceoptiscu/owersof10/>

<http://asterweb.jpl.nasa.gov/gallery/default.htm> Great satellite images of volcanoes

<http://terra.nasa.gov/gallery/> More here

[www.ermapper.com](http://www.ermapper.com) They have a great free downloadable viewer for TIFF and other graphic files called ER Viewer.

[www.drillinginfo.com](http://www.drillinginfo.com) This is an incredible (subscription) well and completion data service for independents. Can be demo'ed for free.

<http://terrasrver.com/> Go here to download free aerial photo images that can be plotted under your digital land and well data. Images down to 1 meter resolution, searchable by Lat Long coordinate. Useful for resolving well location questions.

<http://www.fs.fed.us/gpnl/volcanocams/msh/> This is a live cam of Mt. St. Helens refreshed every 5 minutes. At the bottom are old videos of past eruptions in this cycle. It is worth a watch especially now.



# GEOLOGY POST

## ARTICLES, PAPERS or NEWS?

**ATTENTION!!!!!!** Industry, Professors and Students:

We would like to include more content from the industry and our schools.

Submissions can include anything from professional papers, thesis abstracts, job opportunities to pictures. Anything!!!!

If you have any information or news you would like to share with the Society **PLEASE** email them to the MGS Editor at:

[mcaton@tellusoperating.com](mailto:mcaton@tellusoperating.com)

Thanks & Regards,

Matt Caton  
Editor





# MGS HONORARY MEMBERS

**Esther Applin\***

**Verne Culbertson \***

**David C. Harrell\***

**Dudley J. Hughes**

**Walter P. Jones\***

**Winnie McGlammery\***

**Maurice E. Miesse\***

**Marvin E. Norman\***

**Thurston Connell Rader\***

**Henry Toler\***

**Charles H. Williams**

**David Cate**

**Paul Applin\***

**H. Leroy Francis\***

**Oleta R. Harrell\***

**Urban B. Hughes\***

**Harold Karges\***

**Thomas McGlothin\***

**Emil Monsour\***

**Marvin L. Oxley\***

**Baxter Smith\***

**H. Vaughn Watkins**

**Jerry Zoble**

**Lawrence F. Boland\***

**Jim Furrh\***

**Ralph Hines**

**Wendell B. Johnson \***

**Wilbur H. Knight\***

**Frederic F. Mellen\***

**William H. Moore\***

**Richard R. Priddy\***

**Harry V. Spooner**

**Stewart W. Welch\***

**Julius Ridgeway**

**\* deceased**

**MEMBERSHIP APPLICATION / RENEWAL FORM**

**MISSISSIPPI GEOLOGICAL SOCIETY**

**P.O. BOX 422, JACKSON, MISSISSIPPI 39205-0422**

**2012-2013**

Membership year is June through May

New Membership (\$20/yr)\_\_\_\_\_ Renewal (\$20/yr)\_\_\_\_\_ Student (FREE)\_\_\_\_\_ Associate (\$20/yr)\_\_\_\_\_

Boland Scholarship Fund Donation \$\_\_\_\_\_ Total Amount Enclosed \$\_\_\_\_\_

Last Name:\_\_\_\_\_ First:\_\_\_\_\_ MI:\_\_\_\_\_

Mailing Address:\_\_\_\_\_

Office Phone:\_\_\_\_\_ Home Phone:\_\_\_\_\_ FAX:\_\_\_\_\_

E-mail Address: \_\_\_\_\_

College/University Attended: \_\_\_\_\_

Degree(s) Obtained and Year(s) Awarded: \_\_\_\_\_

Professional Associations, Certifications, & Licenses: \_\_\_\_\_



# 2012-2013 MGS MEMBERS

John Ables	Ken Adams	Chris Bowen	Ken McCarley
O Bill Bagnall	Larry Baria	Roger Chapman	James Landrem
O Neil Barnes	Randy Bissell	Tom Giosa	Thang Pham
Maurice Birdwell	Terry Bryant	Mitchell McMillan	William Potthoff
Robert Branson	Alvin Byrd	Tom McMillan Jr.	Gary Slade
O Matt Caton	Dave Cate	Armando Ricci	Michael Spooner
Sara Davis	Phil Cook	Larry Baria	Ed Stricker
Dave Easom	Chris Franks	Michael Bograd	Don Smith
O Jim Files	Bob Gaston	Lynn Boone	Andrew Sylte
O Todd Hines	David Handcock	Alvin Byrd	Erik Tangumonkem
O Joe Johnson	Bernard Holman	J C Carlisle	Mike Taylor
James Landrem	Joe McDuff	Charles Doubek	Janet Verret
Ken McCarley	Phillip Meadows	Jak Douglas	Steve Walker
Shawn Pool	Bob McElroy	Dave Easom	Fred Walsh
Philip Reeves	Maurice Meylan	Rick Ericksen	Rob Weyman
Bob Schneeflock	James Michael	Mary Giesler	Bradley Winton
Howard Samsel	Jack Moody	Frank Heitmuller	Karl Kaufman
Don Smith	Charlie Morrison	I. Meade Hufford	Michelle Chezem
George Smith	Jim Nix	Kevin Jefferys	Charles Coney
Jim Stephens	James Norris	Arthur Johnson	Jamie Crawford
John Sullivan	Billy Powell	Jim Johnson	Paul Gribas
Tom Sylte	Thomas Seitz	Lars Johnson	Charles Smith
Mike Taylor	George Self	Barbara Kearney	Lindsey Stewart
Sid Thompson	Jimmy Sparks	Cody Lenert	Karl Kaufman
Steve Walkinshaw	Tony Stuart	Michael Lieser	Kyle Carlton
Johnny Holifield	Stan Thieling	Ken Magee	Jo Everett
Joe White			David Thompson
			Frank Heitmuller

\*This list is updated on a monthly basis.

## MGS ADVERTISING ORDER FORM

September 2012 – May 2013

### I. Bulletin Advertisements:

<u>Size</u>	<u>Rate/Year</u>	<u>Amt. Remitted</u>
Full Page Ad (6" x 8")	\$500	\$ _____
1/2 Page Ad (6" x 4")	\$300	\$ _____
1/4 Page Ad (3" x 4")	\$200	\$ _____
Business Card Ad (1 1/2" x 3")	\$100	\$ _____
Professional Listing (1/2" x 3")	\$ 50	\$ _____

### II. Web Page Advertisements ([www.missgeo.com](http://www.missgeo.com)):

<u>Type of Web Page Ad</u>	<u>Rate/Year</u>	<u>Amt. Remitted</u>
Front Page Sponsor (Banner Ad – limit of 5)	\$500	\$ _____
Second Page Banner Ad	\$250	\$ _____
Professional Listing/Link	\$100	\$ _____

(Note: Please contact Steve Walkinshaw at (601) 607-3227 or [mail@visionexploration.com](mailto:mail@visionexploration.com) for details concerning placing your ad on the MGS web site.)

**Total Remitted** \$ \_\_\_\_\_

Please make checks payable to the Mississippi Geological Society. If you have any questions, contact Matt Caton at (601) 898-7444 or [mcaton@tellusoperating.com](mailto:mcaton@tellusoperating.com)

**SEI**®

**SEISMIC EXCHANGE, INC.**

201 St. Charles Ave., Suite 4300  
New Orleans, LA 70170-4300  
(504) 581-7153 • Fax (504) 581-9591

**HOWARD PATTON**

**PRUET OIL COMPANY, LLC**

OIL & GAS EXPLORATION

217 WEST CAPITOL STREET  
JACKSON, MS 39201

OFFICE: (601) 948-5279 Fax: (601) 944-1281

**W. LESTER AULTMAN**

125 South Congress St., Suite 1212, Jackson, MS 39201  
Office (601) 353-2738 Res. (601) 924-4830

**VANTAGE OIL COMPANY**

1710 Tank Road (601) 878-0593  
Terry, MS 39170



**BEAN RESOURCES, INC.**

THOMAS A. GIOSA  
Geologist

P. O. Box 52768 (70505)  
1000 E. St. Mary Blvd.  
Lafayette, La. 70503

Off. (337) 234-2326  
Fax (337) 234-2330  
Cell (337) 288-4089

**BRUNINI**

**WATTS C. UELTSCHY**

OFFICE (601) 960-6871 | FAX (601) 960-6902

E-MAIL WATTS@BRUNINI.COM | WWW.BRUNINI.COM

BRUNINI, GRANTHAM, GROWER & HEWES, PLLC  
ATTORNEYS AT LAW

190 EAST CAPITOL STREET SUITE 100 JACKSON, MS 39201  
MAILING ADDRESS: P.O. DRAWER 119 JACKSON, MS 39205



**Day Dreams Resources, LLC**

**Jerry P. Ogden**

OIL AND GAS EXPLORATION AND PRODUCTION  
CONSULTING PETROLEUM ENGINEER

Jerry P. Ogden, Pet. Eng.

P. O. Box 101  
Natchez, MS 39121  
email: ogdenjerry@bellsouth.net

Office (601) 446-8105  
Fax (601) 446-8844  
Cell (601) 807-1000



EXPLORATION, L.L.C.

401 Edwards Street, Suite 1200  
Shreveport, LA 71101

P.O. Box 1367  
Shreveport, LA 71164

office: (318) 222-8406  
fax: (318) 222-6061  
email: mei@marlinexploration.com

**Jon Q=Petersen**  
President

**S. Cody Lenert**  
Geologist

**Autie T. Orjias**  
V.P./Land Manager

**Ryan Q=Petersen**  
Land

**Dean Giles**  
Secretary/Treasurer

**Rhonda White**  
Admin. Assistant

**Joe R. White, Jr.**  
Chief Geologist



Jason Stockstill  
Marketing Representative

**DAWSON GEOPHYSICAL COMPANY**

508 West Wall, Suite 800  
Midland, Texas 79701-5010  
Telephone 432/684-3000  
Fax 432/684-3030  
Cell 432/967-4099

e-mail: stockstill@dawson3d.com



# ENERGY DRILLING COMPANY <sup>®</sup>

CONTRACT DRILLING 3000 – 15,000 FEET  
MS-AL-FL-ARK-LA-TEX

Pat Burns, Jr.

Jody Helbling

Nestor Navarro

601-446-5259

(Fax)601-446-8607

P. O. Box 905

413 Liberty Rd.

Natchez, MS 39121



OPERATING GROUP, LLC

OPERATING GROUP, LLC

602 Crescent Place, Suite 100

Ridgeland, MS 39157

601-898-7444 Voice

601-898-7446 Fax

BRIAN SIMS

EXPLOITATION GEOLOGIC MANAGER

Email: [bsims@tellusoperating.com](mailto:bsims@tellusoperating.com)

# OWLCO

Oil Well Logging Company

P. O. Box 1692  
Madison, MS 39130

(601) 477-8315



**MOCO INC.**  
The Mississippi Oil Company

MICHAEL L. BLACKWELL  
H. DON NOBLITT

603 Northpark Drive • Ridgeland, MS 39157  
(601) 957-3550



**Karl J. Kaufmann**  
President

Suite B  
546 Keyway Drive  
Jackson, MS 39232

601-936-3601  
Fax 601-936-3646  
coukauf@aol.com

**BLAIR & BONDURANT, P.A.**  
ATTORNEYS AT LAW

WILLIAM F. BLAIR

P.O. Box 321423      1368 Old Fannin Road  
Jackson, MS 39232      Suite 300  
Telephone: (601) 992-4477      Brandon, MS 39047  
Telecopier: (601) 992-9189      Email:



**TROPHY  
PETROLEUM  
CORPORATION**

100 N. Van Buren Street  
Post Office Box 415  
Carthage, MS 39051  
(601) 298-0200 (601) 298-0201 Fax

E. Wayne Upchurch  
President



**John G. Cox**  
Petroleum Geologist

**John G. Cox**  
Geologist

603 Northpark Drive, Suite 300      601.978.1763  
Ridgeland, Mississippi 39157      fax 601.952.0425  
john\_cox@bellsouth.net

# BRUXOIL, INC.

DAVID K. BROOKS - PRESIDENT  
RAYMOND A. HELFRICH - VICE PRESIDENT  
DOROTHY M. JAUBERT

P. O. Box 16929  
Jackson, MS 39236  
(601) 981-5722  
FAX: (601) 366-9490



**ROUNDTREE & ASSOCIATES, INC.**  
OIL AND GAS PRODUCTION  
210 Trace Colony Park Drive,  
Ridgeland, MS 39157  
Phone (601) 355-4530

**MOON & HINES**  
OIL & GAS EXPLORATION

**MOON-HINES-TIGRETT OPERATING CO., INC.**  
PROPERTY MANAGEMENT

P O BOX 3216  
RIDGELAND, MS 39158

OFFICE (601) 572-8300      FAX (601) 572-8310



**KELTON OPERATING COMPANY, INC.**  
since 1953

605 SUN TRUST TOWER  
220 W. GARDEN STREET  
PENSACOLA, FL 32501  
P. O. BOX 230  
PENSACOLA, FL 32591

TELEPHONE  
(850) 434-6830  
FACSIMILE  
(850) 434-6842

**Boone**  **Exploration, Inc.**

Lynn D. Boone  
President

J.C. Carlisle  
Vice President

21 Wire Road  
P.O. Box 8660  
Huntsville, TX 77340

Phone: 936-295-4066  
Fax: 936-295-4042  
Email: jcc9551@aol.com

**Energy Land Services**

Oil & Gas Leases

**I. Meade Hufford, CPL**

Owner

P. O. Box 302  
144 Wharton Grove Ln  
Weems, VA 22576

Phone: 804-438-5852  
Fax: 804-438-9043  
Cell: 713-705-7235  
hufford1913@aol.com

**JULIUS M. RIDGWAY**

**COASTAL EXPLORATION, INC.**

1437 OLD SQUARE ROAD, #104  
JACKSON, MISSISSIPPI 39211

601-362-0502  
FAX: 601-362-5397

**SPOONER PETROLEUM COMPANY**

210 East Capitol St., Suite 956  
Jackson, Mississippi 39201

**Oil & Gas Production & Exploration  
Contract Operations**

601-969-1831

**JAMES B. FURRH, Jr., Inc.**

*Oil & Gas Exploration*

4450 Old Canton Road, Suite 205,  
Jackson, MS 39211  
Phone (601) 982-9393 Fax (601) 982-9785

**E. GEOFFREY JEFFREYS**

*Petroleum Consultant*

**OIL, GAS AND MINERAL APPRAISALS**

115 Fairway Drive  
Daphne, AL 36526  
egjeffreys@aol.com

Off (251) 621-1850  
Fx (251) 621-1630  
Cell (251) 709-7919

**Bryant Miller**

1837 Peachtree Street  
Jackson, MS 39202  
bryantgmiller@bryantgmiller.com

**ENERGEN**  
RESOURCES

**President & COO**

**John Richardson**

**Senior Vice President**

**Operations**

**Paul Sparks**

**General Manager**

**Acquisitions & Engineering**

**Gene Cash**

**General Manager**

**Geology**

**Ron Tisdale**

**General Manager**

**Land**

**Paul Rote**

**(205)326-2721**

**Joseph H. McDuff**  
Geologist

351 Chapel Loop  
Mandeville, LA 70471  
985.845.9430

jhmcduff@charter.net



**Diversified Land  
Management, Inc.**

**PERMIT ACQUISITION  
SPECIALISTS**

**Jack Tate**

President

Office: 337.886.0060

Fax: 337.886.0064

Cell: 601.259.1366

email: geoagent46@aol.com

dminconline.com

"A company committed to excellence and achieving success while providing professional permitting acq. & project mngt. with the client's interests & concerns top priority"



# Get More



**Weatherford**<sup>®</sup>

LABORATORIES

[weatherfordlabs.com](http://weatherfordlabs.com)

© 2012 Weatherford. All rights reserved. Incorporates proprietary and patented Weatherford technology.

With reservoirs becoming increasingly complex, you need the most accurate information you can get to better understand your reservoir.

Weatherford Labs helps you get more from your core by combining an unsurpassed global team of geoscientists, engineers, technicians and researchers with the industry's most comprehensive, integrated laboratory services worldwide. From core analysis, sorption, geochemistry and isotopic composition to detailed basin modeling and comprehensive data packages, we provide you with real reservoir rock and fluid information that hasn't been distilled by a simulator or iterated by software.

We call it "The Ground Truth"<sup>™</sup> – giving you the accurate answers you need for better reservoir understanding. You'll call it a better return on your reservoir investment. To learn more, contact

[TheGroundTruth@weatherfordlabs.com](mailto:TheGroundTruth@weatherfordlabs.com).

**Denbury**

5320 Legacy Drive  
Plano, TX 75024

**Denbury Resources, Inc.**

*Denbury Resources, Inc. is a growing independent oil and gas company. The Company is the largest oil and natural gas operator in Mississippi and Montana, owns the largest reserves of CO<sub>2</sub> used for tertiary oil recovery east of the Mississippi River, and holds significant operating acreage in the Rockies, Permian Basin, Mid-Continent and Gulf Coast. The Company's goal is to increase the value of acquired properties through a combination of exploitation, drilling and proven engineering extraction practices, with its most significant emphasis relating to tertiary recovery operations.*

NYSE: DNR  
[www.denbury.com](http://www.denbury.com)

Denbury Resources Inc.

**BRANCHING  
OUT**



# MGS PAST PRESIDENTS

1939-1940	Henry N. Toler	1973-1974	Larry Walter
1940-1941	Urban B. Hughes	1974-1975	W. E. "Gene" Taylor
1941-1942	J. Tom McGlothlin	1975-1976	Jerry E. Zoble
1942-1943	Dave C. Harrell	1976-1977	P. David Cate
1943-1944	K. K. "Bob" Spooner	1977-1978	Sarah Childress
1944-1945	L. R. McFarland	1978-1979	Les Aultman
1945-1946	J. B. Story	1979-1980	Philip R. Reeves
1946-1947	Frederic F. Mellen	1980-1981	Marshall Kern
1947-1948	H. Lee Spyles	1981-1982	Stephen Oivanki
	Robert D. Sprague	1982- 1983	James W. "Buddy" Twiner
1948-1949	Robert D. Sprague	1983- 1984	Charles H. Williams
1949-1950	E. T. "Mike" Monsour	1984- 1985	C. Kip Ferns
1950-1951	J. Tate Clark	1985-1986	Steven S. Walkinshaw
	Charles E. Buck	1986-1987	J. R. "Bob" White
1951-1952	George W. Field	1987-1988	Harry Spooner
1952-1953	James L. Md11in, Jr.	1988-1989	Stanley King
1953-1954	Wilbur H. Knight	1989-1990	Stan Galicki
1954-1955	A. Ed Blanton	1990-1991	E. James Files, Jr.
1955-1956	Gilbert A. Talley	1991-1992	Stephen L. Ingram, Sr.
1956-1957	Ben Ploch	1992-1993	Michael Noone/Stanley King
1957-1958	Emil Monsour	1993-1994	Brian Sims
1958-1959	Charles Brown	1994-1995	C. W. "Neil" Barnes
1959-1960	M. F. Kirby	1995-1996	Lester Aultman
1960-1961	Rudy Ewing	1996-1997	Jack S. Moody
1961-1962	Xavier M. Franscogna	1997-1998	George B. Vockroth
1962-1963	Robert B. Ross	1998-1999	Rick L. Ericksen
1963-1964	William A. Skees	1999-2000	Stanley King
	Marvin Oxley	2000-2001	John C. Marble
1964-1965	James F. Bollman	2001-2002	Andrew T. Sylte
1965-1966	Sankey L. Blanton	2002-2003	Aaron Lasker
1966-1967	Alan Jackson	2003-2004	John G. Cox
1967-1968	Julius M. Ridgway	2004-2005	James E. Starnes
1968-1969	Edward D. Minihan	2005-2006	Todd Hines
1969-1970	Kevin E. Cahill	2006-2007	Bob Schneeflock
1970-1971	John Lancaster	2007-2008	Tony Stuart
1971-1972	Larry Boland	2008-2009	Lisa Ivshin
		2009-2010	Joe Johnson
		2010-2011	Brian Sims
		2011-2012	Stanley King