

MISSISSIPPI GEOLOGICAL SOCIETY

eBULLETIN

Volume 63

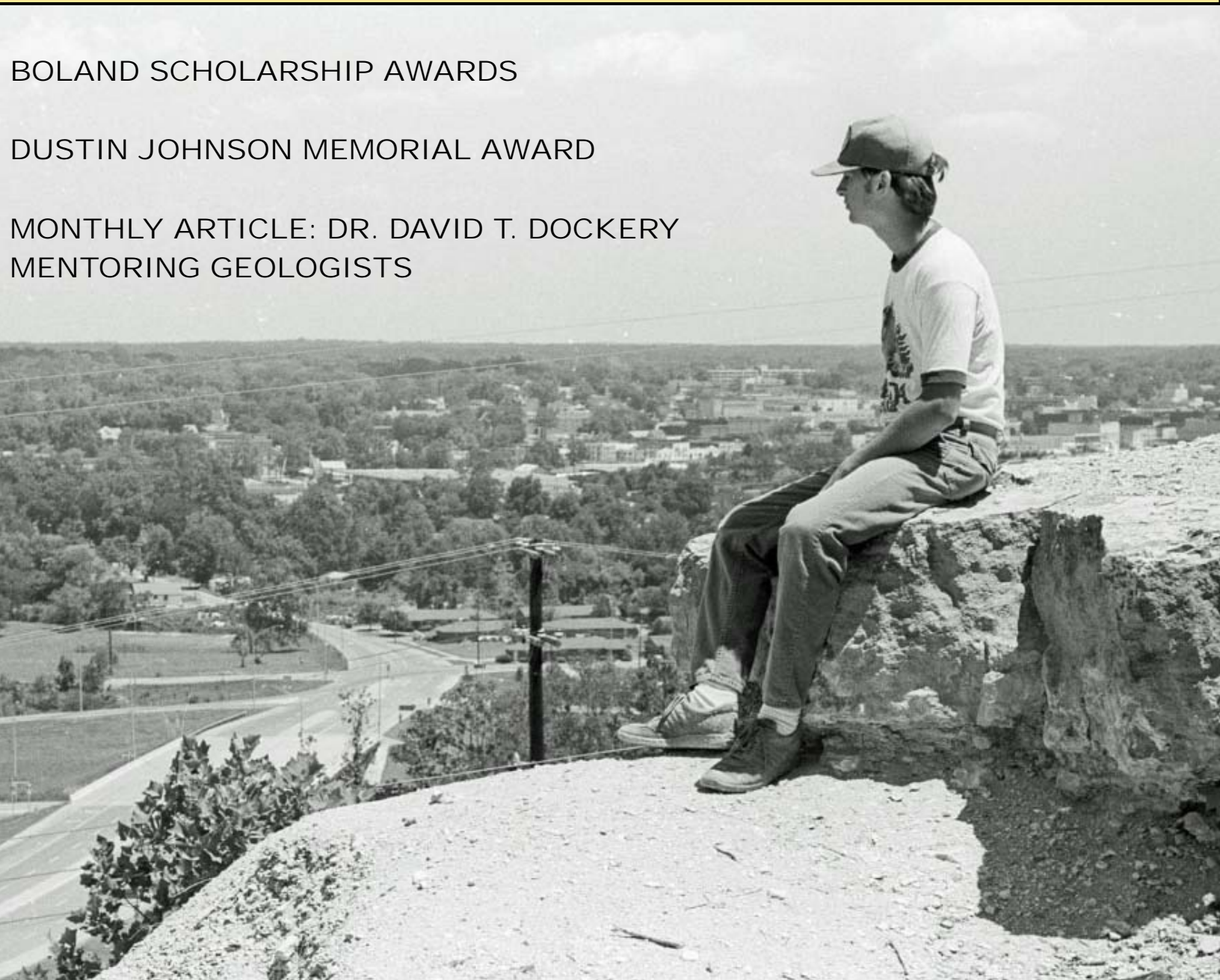
No. 8

April 2015

BOLAND SCHOLARSHIP AWARDS

DUSTIN JOHNSON MEMORIAL AWARD

MONTHLY ARTICLE: DR. DAVID T. DOCKERY
MENTORING GEOLOGISTS



www.missgeo.com



MGS 2014-2015 BOARD OF DIRECTORS

Officers

President	Ezat Heydari	Jackson State	j00103248@jsums.edu	(601) 979-4230
1st Vice President	Jack Moody	Independent		
2nd Vice President	Joe Johnson	Spooner	jjohnson@spoonercompanies.com	(601) 898-7444
Treasurer	Bill Bagnall	BLM	wbagnall@blm.gov	(601)-977-5417
Webmaster	Steve Walkinshaw	Vision Exploration	steve@visionexploration.com	(601) 607-3227
Advertising	Matt Caton	Tellus Operating	mcaton@tellusoperating.com	(601) 898-7444
Editor	Matt Caton	Tellus Operating	mcaton@tellusoperating.com	(601) 898-7444

Boland Scholarship

President	Jack Moody	Independent		
Secretary	Dave Cate	Pruet Oil		(601) 948-5279
Members	Joe Johnson	Spooner		
	Tony Stuart	Venture Oil & Gas		(601) 428-7725
	James Starnes	MDEQ		
	Bob Schneeflock	Geodigital Consulting		(601) 853-0701

Honorary Membership

Chairman	Charles H. Williams, Jr. Vaughey & Vaughey		(601) 982-1212
Members	Dudley J. Hughes	Hughes South Corp.	(601) 420-9892
	E. Ralph Hines	Moon-Hines	(601) 572-8300
	Jerry Zoble	Independent	

MGS Representatives

AAPG	Maurice Birdwell	Independent	(601) 936-6939
GCAGS	Danny Harrelson	U.S. Army R&D	(601) 634-2685

Other

Environmental	John Ryan	Allen	(601) 936-4440
Historian	Stanley King	Independent	(601) 842-3539



PRESIDENT'S LETTER

Ezat Heydari



Greetings:

Two of the most wonderful functions of the Mississippi Geological Society are Boland Scholarship Award and Dustin Johnson Memorial Award. Activities associated with both awards are headed by Dave Cate of Pruet Oil and Gas. The dedication and time spent by Dave to select candidates are truly admirable. The Boland Award is given to four outstanding undergraduate students majoring in Geology, one from each of the four geology-granting universities in the State. The Dustin Johnson Memorial Award is give to one student who has overcome major obstacles and has succeeded in Geology.

The process of selecting award winning students is lengthy. It involves trips by the committee members to each school for interviews. This is followed by reviews of all applicants and the final selection.

These awards are avenues for MGS to rejuvenate its ties with the State's academic institutions. It is also a process by which MGS becomes familiar with the ever changing Geoscience education in Mississippi.

Most importantly, the Boland and Johnson awards provide the only opportunity when all stake holders in the Geology of Mississippi (academia, state agencies, oil and gas operators, and MGS) come together. We need to celebrate this occasion. It is a time for exchange of ideas for advancement of Geoscience in the State.

MGS welcomes the honorable faculty representatives, student recipients of the Boland and Johnson awards and their families, and other guests attending the event. We look forward to a wonderful day. Enjoy and get the most out of it. The opportunity of this type comes only once a year.

Lastly, MGS invites all graduate students majoring in Geology to present a poster about their research at our Spring Fling next month. This would be a good opportunity for students to interact with Mississippi's Geological Community, exchange ideas, and get some feed back.

I look forward to see you Thursday.

Regards,

Ezat

2014-2015 MGS MEETING SCHEDULE

When	What/Who	Where
September 11, 2014	Fall BBQ	Jackson Yacht Club-5:30pm
October 9, 2014	John Allen Tuscaloosa Marine Shale	River Hills – 11:30am
November 13, 2014	Carl Fiduk Tectonics and Depositional Episodes of the GOM	River Hills – 11:30am
December 5, 2014	MAPL Christmas Party and Dance	Duling Hall - 7pm
January 8, 2015	Frank Vincent Shallow Oil “Re-Discovery” at Washington Field	River Hills – 11:30am
February 12, 2015	David T. Dockery III, RPG Structural Geology of MS and Oil and Gas Fields	River Hills – 11:30am
March 12, 2015	Dr. Ezat Heydari Sedimentary Rocks of Gale Crater, Mars	River Hills – 11:30am
April 9, 2015	Boland Scholarship Awards	River Hills – 11:30am
May 14, 2015	Spring Fling	Jackson Yacht Club– 5:30pm



OFFICERS MEETINGS

September 4, 2014
October 7, 2014
November 11, 2014
January 6, 2015
February 10, 2015
March 6, 2015
April 7, 2015
May 12, 2015



BOLAND SCHOLARSHIP

Faculty & Students,

It is time for the Mississippi Geological Society along with the Boland Scholarship Fund to honor the most outstanding overall students for the 2014-2015 year.

This month, the Boland Scholarship is awarding 1 student from each institution a check that rewards their hard work and dedication to the Geosciences and their community.

Congratulations to this years winners:

Theresa Woehner—Millsaps College
Patrick B. Lazzarino— University of Southern Mississippi
Regan Byrd—Mississippi State University
Pshani Herath—University of Mississippi

DUSTIN JOHNSON MEMORIAL AWARD

The Dustin Johnson Memorial Award

In addition to the Boland Scholarship Awards, the MGS has established another award to be given each year to recognize a student for extraordinary achievements and determined efforts in the pursuit of a Geoscience career outside the strict Boland Scholarship scholastic requirements . This award is to be known as **The Dustin Johnson Memorial Award** in honor of Dustin Johnson, a Geoscience major at Mississippi State University, who lost his life in 2013 just short of receiving his degree.

Congratulations to this years winner:

Ashley M. Ritter—University of Mississippi



THE UNIVERSITY OF
SOUTHERN
MISSISSIPPI



MILLSAPS
COLLEGE



MGS SPRING FLING

POSTER SESSION

Next month MGS would like to invite you to our annual SPRING FLING and POSTER SESSION. Professors and students please submit a copy of your abstract to the MGS editor:

mcaton@tellusoperating.com



Poster Session @ 2014 Fall BBQ



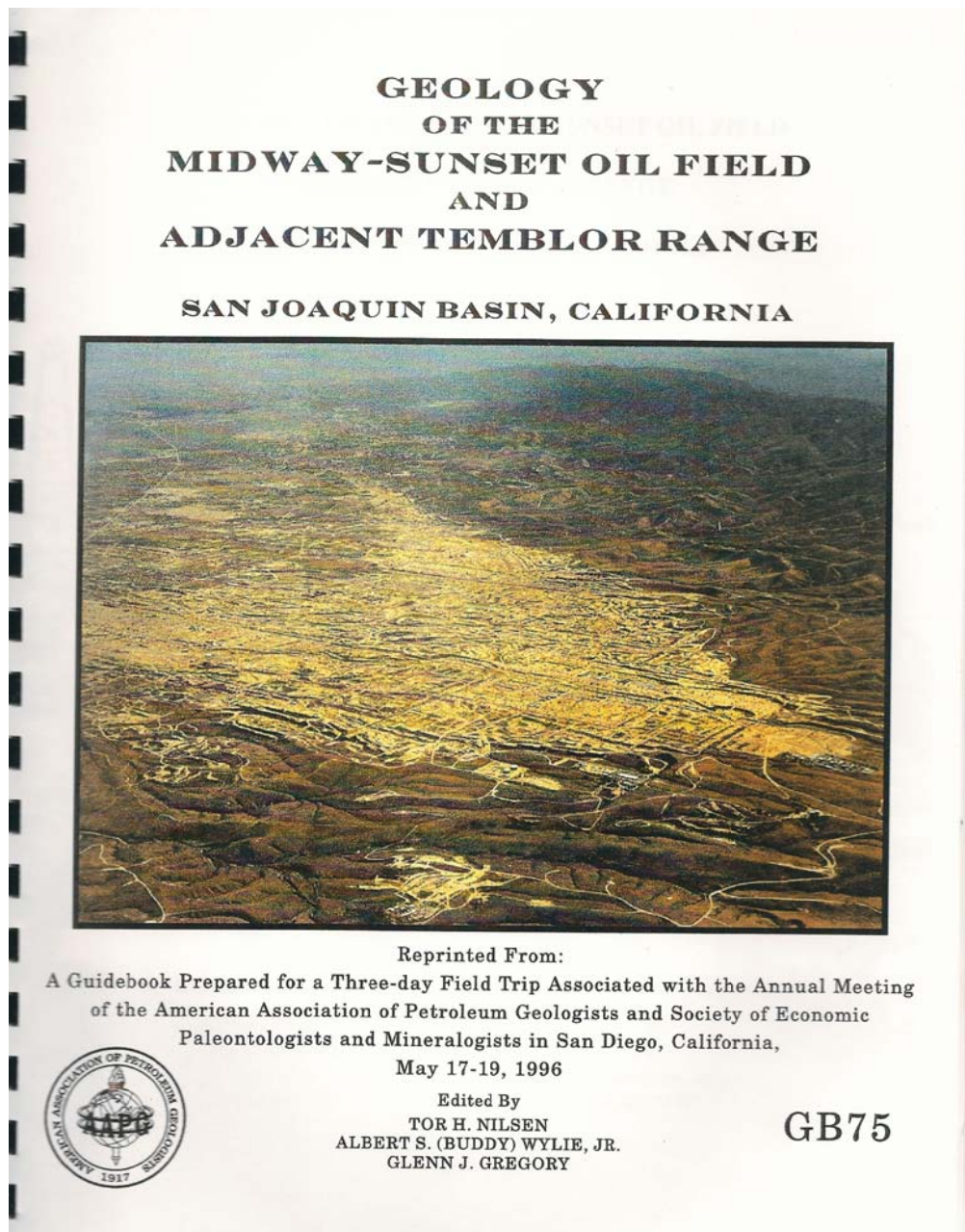
GEOLOGY POST

Robert Gaston

MGS Members,

I am in the process of going through things from the past. There was a time when I worked a good bit of California Geology. This is an excellent guidebook for someone who is interested in California geology or someone who wants to make a trip out there and do a field trip on their own. If you know of anyone in our MGS group who might be interested, please let me know and I will give this to them. It is full of geologic maps, cross sections, thin sections and reports along with the field trip information. Thanks.

Contact the MGS Editor if interested





CALL FOR PAPERS
65th GCAGS Convention
September 19-22, 2015 •
George R. Brown center
Houston, Texas



New Oil and Gas Discoveries
Un-Conventional Plays
Development Field Studies
GOM Shelf and Onshore Plays
Salt Tectonics and Traps
Mexico and Caribbean Plays
Geophysical Technology
Gulf of Mexico Deepwater
Environmental Geology
Coastal Geology and Surface Impact
Geology-Geophysics-Engineering
Portfolio Management
Climate/ Public Awareness Issues

To participate in the 2015 GCAGS Convention
Oral and Poster presentations

An abstract of up to 250 words should be submitted no later than **December 13, 2014** to Technical Program Chair, Linda Sternbach (linda.sternbach@gmail.com).

After notification of acceptance on **January 20, 2015**, authors submit extended abstracts (1-2 pages) or full papers up to 12 pages to the GCAGS Transactions by **February 20, 2015** to GCAGS Transactions Editor, Steve Levine.

Full instructions for manuscript submissions will be posted online at www.gcags2015.com.

Publish your work in the upcoming GCAGS Journal !!
(a new peer-reviewed journal of Gulf Coast Geoscience).

Instructions: An extended abstract of at least 600 words, including 1–2 representative figures, Should be submitted by **December 2, 2014** to Journal Editor, Barry Katz (BarryKatz@chevron.com).

After acceptance, a full manuscript must be submitted by **March 24, 2015**.

Full instructions for manuscript submissions will be posted online at www.gcags2015.com.



MGS MONTHLY COLUMN

David T. Dockery III, RPG

MENTORING GEOLOGISTS

David T. Dockery III, RPG

This mentoring story began in the summer of 1978. I had worked as summer help for the Mississippi Geological Survey as a “sunbeam” for nine years while attending undergraduate and graduate school. On July 1, 1978, State Geologist and Mississippi Geological Survey Director Bill Moore hired me as a full-time employee. That same summer Bill hired his neighbor’s son, Randy Bissell, as a summer-time employee. Randy’s assigned work was largely in the front offices and in the library, but in slow moments he would check on what was going on in the rest of the building. I was 28 years old, working on a paleontology bulletin for the Clarke County area, and needed a scientific illustrator. Randy was 18 and shared that he had just graduated high school with vocational drafting training. His work assignment soon changed to that of an illustrator of fossil clams. Randy’s published illustrations included one Eocene bivalve (published in 1980 as MGS Bulletin 122, Figure 35) and 92 of Oligocene bivalves of the Vicksburg Group (published in 1982 as MGS Bulletin 123). Randy also helped with the field work for these bulletins, posing as scale in outcrop pictures (Figure 1). He also drafted several maps and well log sections.

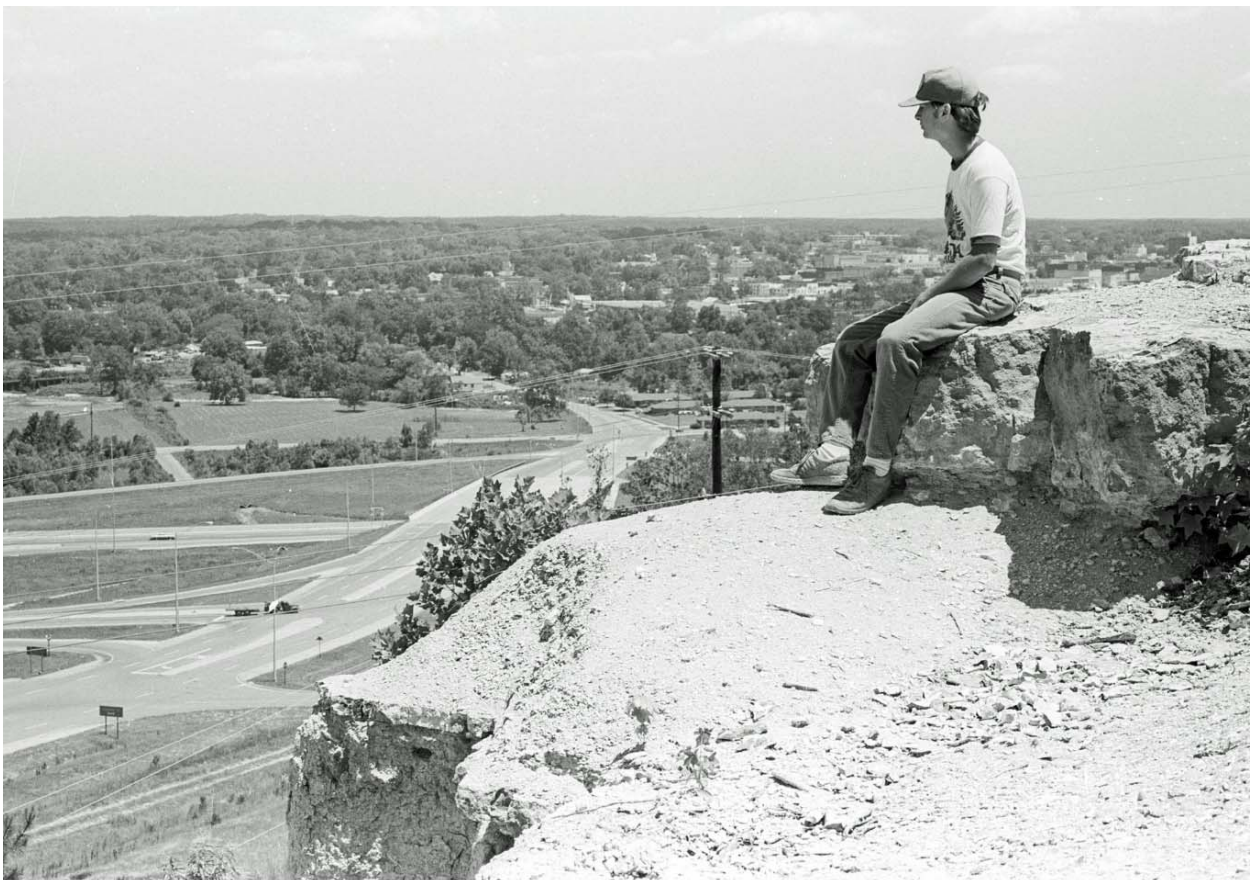


Figure 1. Randy Bissell sitting on the basal sandstone ledge of the Tallahatta Formation on Mt. Barton overlooking Meridian, Mississippi, as illustrated in Mississippi Bureau of Geology Bulletin 122, Figure 6. Picture was taken on May 25, 1979.



MGS MONTHLY COLUMN

David T. Dockery III, RPG

In 1983, when Mary and I visited French paleontologists to collect fossils in France, our friend and host, picked up my first two books on Mississippi fossils and said, “We knew you could do this.” Then he picked up the bulletin on the bivalves of the Vicksburg Group, filled with Randy’s illustrations, and said, “But, we didn’t know you could do this! We were blown away” (or something like that). Randy’s art work raised my profession stock among my French colleagues (Figure 2).

LOWER OLIGOCENE BIVALVIA OF THE VICKSBURG GROUP 89

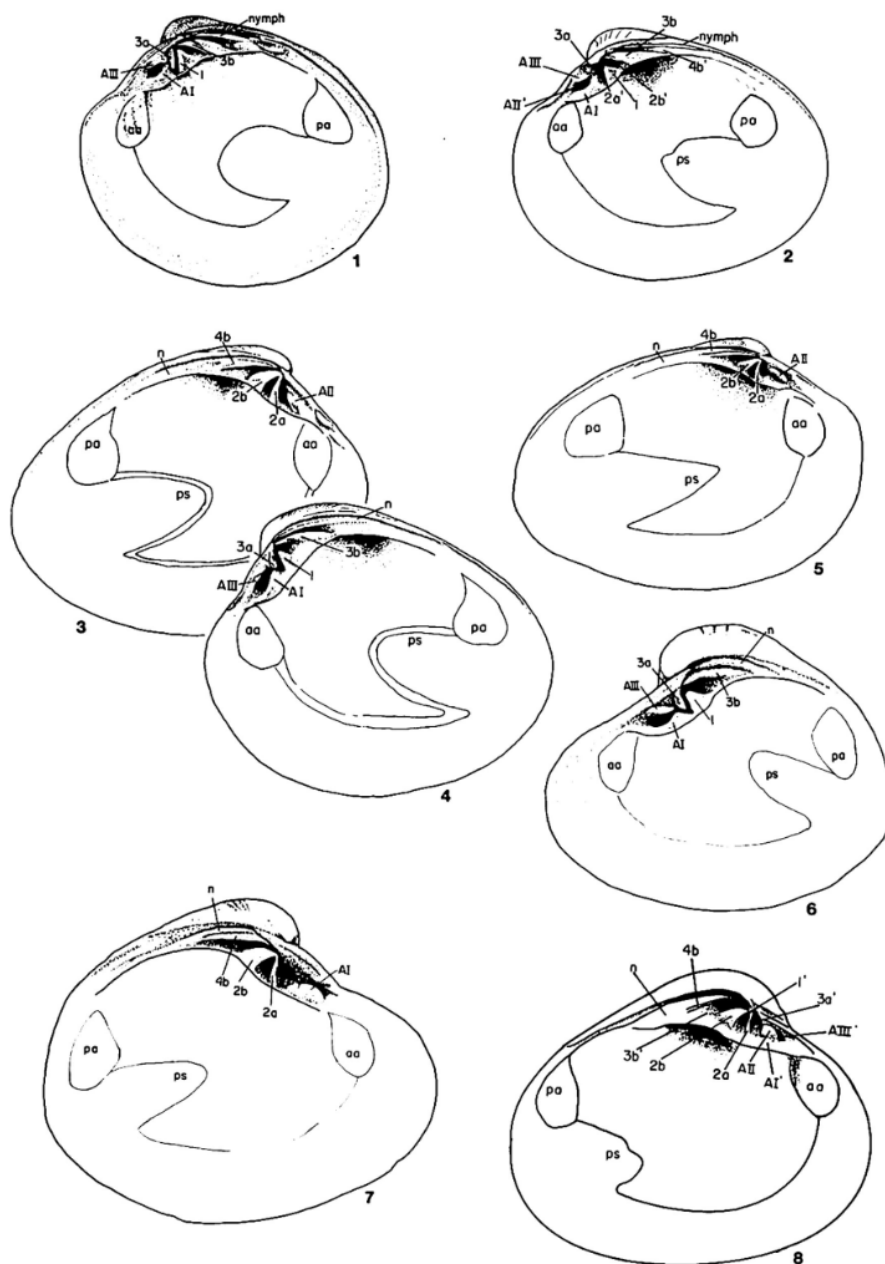


Figure 2. Randy Bissell’s scientific illustrations of the morphology of fossil venerid bivalves of the Vicksburg Group as printed on page 89 of Mississippi Bureau of Geology Bulletin 123.



MGS MONTHLY COLUMN

David T. Dockery III, RPG

After the first summer with the Mississippi Geological Survey, Randy started as a pre-architecture major, intent on minoring in geology at the University of Southern Mississippi in the fall semester of 1978. In the spring he met Dawn Stewart, his wife-to-be, in Geology 101 laboratory. He changed his major to geology. Soon after meeting Dawn, Randy and I took a field trip to collect Cretaceous mollusks in northern Mississippi. The locality we were collecting was world class for fossil mollusks with original shell material. We dug a pit while collecting the shells—Randy said it was like digging his own grave. Then a snake egg rolled out from one wall. While we contemplated that, the mama snake slithered out into the pit with us. The snake was banded red, yellow, and black. It was either a deadly coral snake or a scarlet king snake, but we couldn't remember the code: "red on yellow can kill a fellow, but red on black is a friend of Jack." Thinking that we were too far north for coral snakes, I grabbed the snake and put it in one of our cloth fossil-collecting bags and tied it tight. We left for Jackson in Randy's car with fossils and a bagged snake. After a long drive and a rush to make it on time for a date with Dawn, Randy and I forgot about the snake when we parted company. Shortly after, Randy called me in a panic, the snake bag was empty, and he was to pick up Dawn for a date within the hour. Fortunately, the snake didn't show up on the date and was never found.

Randy attended graduate school at Oklahoma State University and received his Master's Degree geology in 1984. He worked for Exxon from 1984 to 1999 in a variety of assignments from South Texas production, Gulf of Mexico deep-water research, and Nigeria deep-water exploration, among others. In 1999, Randy accepted a job with Headington Oil Company in Corpus Christi, and purchased working interest in the areas he prospected. Early on in his new job, Randy recognized a Vicksburg opportunity that proved to be a very successful field. Seventeen years on, Randy is now the geoscience advisor to Headington Energy Partners assigned to acquire, explore, support, and develop prospects in deep South Texas and the Permian Basin.

Randy tells a story of sitting on one Texas Vicksburg wildcat picking bugs with a paleontologist. The paleontologist announced that *Textularia warreni* was present in the sample and that the well had officially penetrated the top of the Vicksburg. Then, he told Randy, "I guess you don't know *everything* about the Vicksburg." Randy answered, "Well, I've drilled several great Vicksburg wells." That gave the paleontologist pause. Then, Randy said, "I've been to the type locality of the Vicksburg Group. Have you been to the type locality of the Vicksburg Group?" The paleontologist said, "No," and was duly silenced. Randy could have gone further and said, "I illustrated a book on fossils from the Vicksburg Group - The Vicksburg is a friend of mine."

Randy and Dawn have two children in college, a son majoring in Industrial Technology and daughter majoring in Art Education (Figure 3).



Figure 3. Dawn and Randy Bissell in front and Stewart and Emily Bissell in back. Picture was taken in 2011 by Brenda Miles.



MGS MONTHLY COLUMN

David T. Dockery III, RPG

They reside in Corpus Christi where Randy teaches Sunday school and is certified as a High-Performance Driver's Education instructor for the Porsche Club of America. Randy sent me an email in 2013 that said he was sending something by mail that I would like. When the package arrived, it contained a large commemorative coin honoring the Vicksburg National Military Park. The accompanying letter dated April 9, 2013, read:

"Some several weeks ago, I became aware that the U.S. Mint had been issuing 5 ounce commemorative silver coins for U.S. National Parks. I also discovered that Vicksburg Military Park was one of the 2011 series.

My associate was able to obtain several of these for me, and I would like to utilize two of them to "commemorate" aspects of my relationship with the Vicksburg. At the earliest point in my geology career, you introduced me to the Vicksburg. Very few South Texas prospectors can stand up in a meeting and say that they've seen the Vicksburg type locality at Vicksburg and the Jackson type locality at Jackson! I had seen those before I was even a geology student.

Today, my house was paid for with the Vicksburg and my kids are in college because of the Vicksburg. I cannot help but express my gratitude to you for your kindness and instruction in my formative years. You introduced me to the Vicksburg, and I want you to have one of these to remember that point where our lives came together.

Headington Oil ended up with 450 acres upon which I drilled about 20 Vicksburg wells in 2003-2005. Peak gas production exceeded 50 million cubic feet/day and the field has cumulated about 50 billion cubic feet of gas and 1 million barrels of oil to date.

The Vicksburg changed my life. You did too.

Thank you...Randy Bissell"

I responded, "The commemorative coin is nice (Figure 4). The letter is priceless."



Figure 4. Five ounce silver coin commemorating Vicksburg National Military Park given to David Dockery by Randy Bissell in April of 2013 in a personal commemoration of their work together on the Vicksburg Group of Mississippi.



Power Plays: Geothermal Energy in Oil and Gas Fields

Conference Workshop
May 18-20, 2015
SMU Campus in Dallas, Texas

The SMU Geothermal Lab is hosting our 7th international energy conference and workshop, *Power Plays: Geothermal Energy in Oil and Gas Fields*, on May 18-20, 2015 on the SMU Campus.

Over 200 individuals in field operations, project development, technology, finance, engineering and resource assessment from the geothermal, oil, gas and renewable energy sectors are expected to attend.

The conference goal is to connect attendees with the knowledge, technical expertise and equipment options they need to successfully transition existing oil or gas fields into an electricity-generating system. This year our focus broadens to include geophysical exploration topics.

Topics of discussion include power generation from flare gas, waste-heat, and geothermal fluids, along with research updates on induced seismicity, onshore and offshore thermal maturation, Play Fairway Analysis and basin modeling. SMU researchers will present results from their Fall 2014 Eastern North American Margin Community Seismic Experiment (ENAM CSE) research. In addition, equipment such as one-well systems, desalination and other new technologies will be explored.

A pre-conference workshop on May 18th, **A Primer on Geothermal Energy Resources**, provides a focused introduction for those new to the geothermal and energy communities. Four Continuing Education Credits are provided. The workshop is limited to the first 50 registrants to provide a classroom atmosphere with ample time for questions and answers.

The conference details are:

Name: *Power Plays: Geothermal Energy in Oil and Gas Fields*
Date: Workshop May 18; Conference May 19-20, 2015
Location: SMU Campus, Dallas, Texas
Website: <http://www.smu.edu/Dedman/Academics/Programs/GeothermalLab/Conference>
Contact: Maria Richards, mrichard@smu.edu, 214-768-1975





GEOLOGY POST

ARTICLES, PAPERS or NEWS?

ATTENTION!!!!!! Industry, Professors and Students:

I am adding a dedicated section that includes more content from the industry and our schools.

Submissions can include anything from professional papers, thesis abstracts, job opportunities to pictures. Anything!!!!

If you have any information or news you would like to share with the Society **PLEASE** email them to the MGS Editor at:

mcaton@tellusoperating.com

Thanks & Regards,

Matt Caton
Editor



AAPG

Advancing the World of Petroleum Geosciences™

AAPG Wiki Announces June 2015 Wiki Write Off Competition!

AAPG's inaugural Wiki Write Off competition ended in December 2014 with the Universitas Gadjah Mada AAPG student chapter winning \$500 for its entry, "[Well log analysis for reservoir characterization](#)."

Your chapter could be next!

The rules are simple. Your group submits five original wiki articles to AAPG's Wiki by 30 June. [Tell us about it](#). The AAPG Wiki Advisory Board and Senior Associate Editor Board will select the best article, and the winner will be announced in July 2015.



[Wiki Write Off Competition](#)

[AAPG's Wiki](#)

[Previous Entries](#)



You have received this email because you were subscribed to AAPG updates using the email address mcaton@tellusoperating.com.

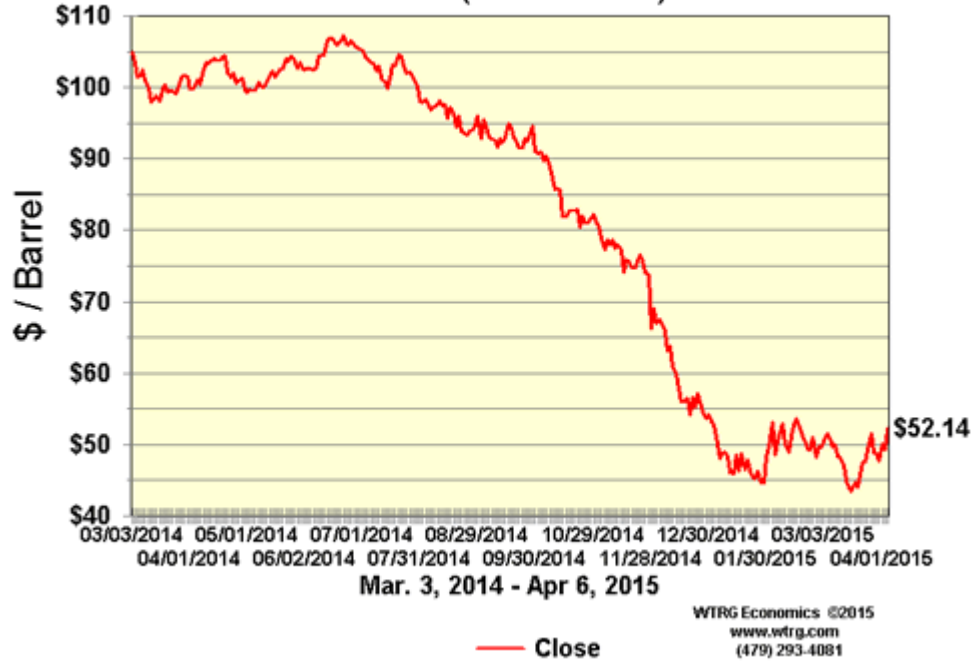
If you don't want to receive emails about about AAPG [go here to edit your email preferences](#).

If you no longer wish to receive any emails from AAPG please [unsubscribe](#).

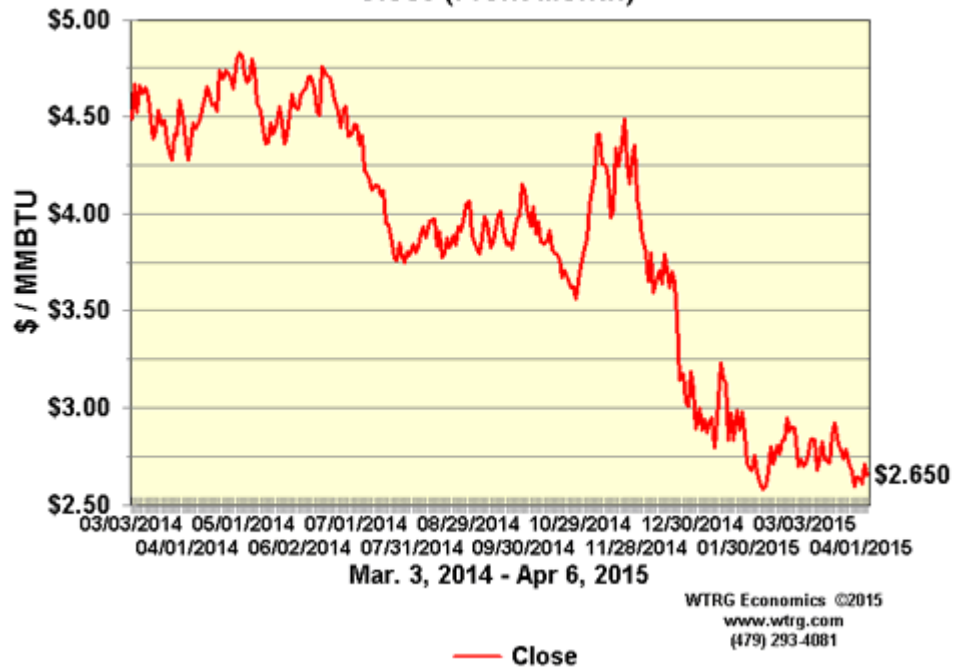


CURRENT PRICES

NYMEX Crude Oil Futures
Close (Front Month)



NYMEX Natural Gas Futures
Close (Front Month)





BOLAND SCHOLARSHIP FUND

Thank you to the following sponsors for their generous donations to the Boland Scholarship Fund!

Dave Cate

George T. Smith

Jack Douglas

Chris Franks

I. Meade Hufford

Maurice Birdwell

Charlie Williams

Jim Michael



2014-2015 MGS MEMBERS

Ken Adams
Bill Bagnall
Larry Baria
Neil Barnes
Tiffany Berry
Maurice Birdwell
Randy Bissell
Michael Bograd
Lynn Boone
Chris Bowen
Keith Bowman
Robert Branson
Terry Bryant
Alvin Byrd
Matt Caton
J. C. Carlisle
Mark Chapman
Phil Cook
Jamie Crawford
Wesley Day
David Dockery
Charles Doubek
Jak Douglas
David Dunton
Dave Easom
Jo Everett
Jim Files
Chris Franks
Stan Galicki
Bob Gaston

Tom Giosa
Paul Gribas
David Hancock
Danny Harrelson
Frank Heitmuller
Robert Herr IV
Ezat Heydari
David Hilton
Todd Hines
Johnny Holifield
Bernard Holman
I. Meade Hufford
Lisa Ivshin
Ron Jinkins
James Landrem
Chris Johnson
Lars Johnson
Joe Johnson
Karl Kaufmann
Stanley King
Cody Lenert
Joe Lott
Ken Magee
Joe McDuff
Tom McMillan
Jim Michael
David Miller
Jack Moody
Charlie Morrison
Lew Murray

James Nix
James Norris
Jana Payne
Philip Reeves
Armando Ricci
John Ryan
Mike W Taylor
Bob Schneeflock
Thomas Seitz
George Self
Charles Smith
George Smith
Jimmy Sparks
James Starnes
Charles Sternbach
Jim Stevens
Lindsey Stewart
Ed Sticker
Tony Stuart
John Sullivan
Andrew Sylte
Stan Thieling
Sid Thompson
Watts Ueltschey
Wayne Upchurch
Janet Verret
Steve Walkinshaw
Joe White
Mark Wyatt

* This list is updated on a monthly basis.
Please contact Bill Bagnall if you have any questions.

GEO LINK POST

USGS TAPESTRY OF TIME AND TERRAIN <http://tapestry.usgs.gov> The CCGS is donating to all of the 5th and 6th grade schools in the Coastal Bend. Check it out—it is a spectacular map. You might want a framed one for your own office. The one in my office has glass and a metal frame, and it cost \$400 and it does not look as good as the ones we are giving to the schools. Call Owen 510-6224 if you want one for your office for \$150. Duncan, Mike, Chris, Dave, Bob Randy, Seb., Kevin, Ken, Craig, Patrick, Robert.

FREE TEXAS TOPO'S <http://www.tnris.state.tx.us/digital.htm> these are TIFF files from your state government that can be downloaded and printed. You can add them to SMT by converting them first in Globalmapper. Other digital data as well.

FREE NATIONAL TOPO'S [http://store.usgs.gov/b2c_usgs/b2c/start/\(xcm=r3standardpitrex_prd\)/.do](http://store.usgs.gov/b2c_usgs/b2c/start/(xcm=r3standardpitrex_prd)/.do) go to this webpage and look on the extreme right side to the box titled TOPO MAPS DOWNLOAD TOPO MAPS FREE.

<http://www.geographynetwork.com/> Go here and try their top 5 map services. My favorite is 'USGS Elevation Date.' Zoom in on your favorite places and see great shaded relief images. One of my favorites is the Great Sand Dunes National Park in south central Colorado. Nice Dunes.

<http://antwrp.gsfc.nasa.gov/apod/astropix.html> Astronomy picture of the day — awesome. I click this page everyday.

<http://www.spacimaging.com/gallery/ioweek/iow.htm> Amazing satellite images. Check out the gallery.

<http://www.ngdc.noaa.gov/seg/topo/globegal.shtml> More great maps to share with kids and students.

www.geo.org Don't forget we have our own web page.

<http://micro.magneet.fsu.edu/primer/java/scienceoptiscu/owersof10/>

<http://asterweb.jpl.nasa.gov/galery/default.htm> Great satellite images of volcanoes

<http://terra.nasa.gov/gallery/> More here

www.ermapper.com They have a great free downloadable viewer for TIFF and other graphic files called ER Viewer.

www.drillinginfo.com This is an incredible (subscription) well and completion data service for independents. Can be demo'ed for free.

<http://terrasrver.com/> Go here to download free aerial photo images that can be plotted under your digital land and well data. Images down to 1 meter resolution, searchable by Lat Long coordinate. Useful for resolving well location questions.

<http://www.fs.fed.us/gpnf/volcanocams/msh/> This is a live cam of Mt. St. Helens refreshed every 5 minutes. At the bottom are old videos of past eruptions in this cycle. It is worth a watch especially now.



MGS HONORARY MEMBERS

Esther Applin*

Verne Culbertson *

David C. Harrell*

Dudley J. Hughes

Walter P. Jones*

Winnie McGlammery*

Maurice E. Miesse*

Marvin E. Norman*

Thurston Connell Rader*

Henry Toler*

Charles H. Williams

David Cate

Paul Applin*

H. Leroy Francis*

Oleta R. Harrell*

Urban B. Hughes*

Harold Karges*

Thomas McGlothin*

Emil Monsour*

Marvin L. Oxley*

Baxter Smith*

H. Vaughn Watkins

Jerry Zoble

Lawrence F. Boland*

Jim Furrh*

Ralph Hines

Wendell B. Johnson *

Wilbur H. Knight*

Frederic F. Mellen*

William H. Moore*

Richard R. Priddy*

Harry V. Spooner

Stewart W. Welch*

Julius Ridgeway

*** deceased**

MEMBERSHIP APPLICATION / RENEWAL FORM

MISSISSIPPI GEOLOGICAL SOCIETY

P.O. BOX 422, JACKSON, MISSISSIPPI 39205-0422

2014-2015

Membership year is June through May

New Membership (\$20/yr)_____ Renewal (\$20/yr)_____ Student (FREE)_____ Associate (\$20/yr)_____

Boland Scholarship Fund Donation \$_____ Total Amount Enclosed \$_____

Last Name:_____ First:_____ MI:_____

Mailing Address:_____

Office Phone:_____ Home Phone:_____ FAX:_____

E-mail Address: _____

College/University Attended: _____

Degree(s) Obtained and Year(s) Awarded: _____

Professional Associations, Certifications, & Licenses: _____

MGS ADVERTISING ORDER FORM

September 2013 – May 2014

I. Bulletin Advertisements:

<u>Size</u>	<u>Rate/Year</u>	<u>Amt. Remitted</u>
Full Page Ad (6" x 8")	\$500	\$ _____
1/2 Page Ad (6" x 4")	\$300	\$ _____
1/4 Page Ad (3" x 4")	\$200	\$ _____
Business Card Ad (1 1/2" x 3")	\$100	\$ _____
Professional Listing (1/2" x 3")	\$ 50	\$ _____

II. Web Page Advertisements (www.missgeo.com):

<u>Type of Web Page Ad</u>	<u>Rate/Year</u>	<u>Amt. Remitted</u>
Front Page Sponsor (Banner Ad – limit of 5)	\$500	\$ _____
Second Page Banner Ad	\$250	\$ _____
Professional Listing/Link	\$100	\$ _____

(Note: Please contact Steve Walkinshaw at (601) 607-3227 or mail@visionexploration.com for details concerning placing your ad on the MGS web site.)

Total Remitted \$ _____

Please make checks payable to the Mississippi Geological Society. If you have any questions, contact Matt Caton at (601) 898-7444 or mcaton@tellusoperating.com



**When time is money,
Wellsite Geoscience is
money well spent.**

Whether you're exploring a basin, producing a well or completing a shale play, time is money. That's why Weatherford Laboratories brings a suite of formation evaluation technologies right to the wellsite. Utilizing mud gas and cuttings, these technologies provide detailed data on gas composition, organic richness, mineralogy and chemostratigraphy in near real time. As a result, operators now have an invaluable tool to assist with sweet spot identification, wellbore positioning, completion design and hydraulic fracturing. We call it Science At the Wellsite. You'll call it money well spent.

SCIENCE AT THE WELLSITE™
www.weatherfordlabs.com

Formation Evaluation | Well Construction | Completion | Production
©2010 Weatherford. All rights reserved.



Marlin
EXPLORATION LLC

Jon Q=Petersen, President
Autie T. Orjias, V. P. / Land Manager
Dean Giles, Secretary / Treasurer
S. Cody Lenert, Geologist
Ryan Q=Petersen Land

(318) 222-8406
Fax (318) 222-6061

401 Edwards Street, Suite 1200
Shreveport, LA 71101

P. O. Box 1367
Shreveport, LA 71164

Email:
mei@marlinexploration.com

Joe R. White, Jr.
Petroleum Geologist

400 Travis St., Ste. 909
Shreveport, LA 71101
Ofc. 318-703-2311
Cell. 318-423-9828
Hm. 318-949-3539

AAPG CPG #5580
MS RPG #0097
LA RPG (SUBMITTED)
Jwhite1362@aol.com
Joerjr@gmail.com

Energy Land Services
Oil & Gas Leases

I. Meade Hufford, CPL
Owner

P. O. Box 302
144 Wharton Grove Ln
Weems, VA 22576
Phone: 804-438-5852
Fax: 804-438-9043
Cell: 713-705-7235
hufford1913@aol.com



KARL J KAUFMANN

504 KEYWOOD CIRCLE SUITE A
FLOWOOD, MS 39232
PHONE: 601-936-3601
CELL: 601-209-0948
VALIOSO@BELLSOUTH.NET

BRUNINI

WATTS C. UELTSCHY

OFFICE (601) 960-6871 | FAX (601) 960-6902

E-MAIL WATTS@BRUNINI.COM | WWW.BRUNINI.COM

BRUNINI, GRANTHAM, GROWER & HEWES, PLLC
ATTORNEYS AT LAW

190 EAST CAPITOL STREET SUITE 100 JACKSON, MS 39201
MAILING ADDRESS: P.O. DRAWER 119 JACKSON, MS 39205

Baldwin Madden Energy, LLC
Oil and Gas Acquisitions and Development

Christopher D. Franks
Senior Geologist

333 Texas Street, Suite 1919
Shreveport, Louisiana 71101-3666
318-429-2204 / 318-429-2229 (fax)
chris.franks@BaldwinMadden.com

Oil & Gas solutions that work...

WWW.NEEL-SCHAFFER.COM



Environmental
Permitting/Planning

Water

Wastewater

Site Engineering

Pipeline Surveying

Geotechnical
Engineering

Construction/
Operations

Materials Testing



NEEL-SCHAFFER

Solutions you can build upon



BEAN RESOURCES, INC.

THOMAS A. GIOSA
Geologist

P. O. Box 52768 (70505)
1000 E. St. Mary Blvd.
Lafayette, La. 70503

Off. (337) 234-2326
Fax (337) 234-2330
Cell (337) 288-4089

PRUET OIL COMPANY, LLC

OIL & GAS EXPLORATION

217 WEST CAPITOL STREET

JACKSON, MS 39201

OFFICE: (601) 948-5279 FAX: (601) 944-1281

Joseph H. McDuff
Geologist



351 Chapel Loop
Mandeville, LA 70471
985.845.9430
jhmcduff@charter.net

Philip L. Cook

Petroleum Geologist

105 Livingston Drive
Madison, MS 39110

Cell: 601-954-7689
Email: pcook952@gmail.com



MGS PAST PRESIDENTS

1939-1940	Henry N. Toler	1973-1974	Larry Walter
1940-1941	Urban B. Hughes	1974-1975	W. E. "Gene" Taylor
1941-1942	J. Tom McGlothlin	1975-1976	Jerry E. Zoble
1942-1943	Dave C. Harrell	1976-1977	P. David Cate
1943-1944	K. K. "Bob" Spooner	1977-1978	Sarah Childress
1944-1945	L. R. McFarland	1978-1979	Les Aultman
1945-1946	J. B. Story	1979-1980	Philip R. Reeves
1946-1947	Frederic F. Mellen	1980-1981	Marshall Kern
1947-1948	H. Lee Spyres	1981-1982	Stephen Oivanki
	Robert D. Sprague	1982- 1983	James W. "Buddy" Twiner
1948-1949	Robert D. Sprague	1983- 1984	Charles H. Williams
1949-1950	E. T. "'Mike" Monsour	1984- 1985	C. Kip Ferns
1950-1951	J. Tate Clark	1985-1986	Steven S. Walkinshaw
	Charles E. Buck	1986-1987	J. R. "'Bob" White
1951-1952	George W. Field	1987-1988	Harry Spooner
1952-1953	James L. Md11in, Jr.	1988-1989	Stanley King
1953-1954	Wilbur H. Knight	1989-1990	Stan Galicki
1954-1955	A. Ed Blanton	1990-1991	E. James Files, Jr.
1955-1956	Gilbert A. Talley	1991-1992	Stephen L. Ingram, Sr.
1956-1957	Ben Ploch	1992-1993	Michael Noone/Stanley King
1957-1958	Emil Monsour	1993-1994	Brian Sims
1958-1959	Charles Brown	1994-1995	C. W. "Neil" Barnes
1959-1960	M. F. Kirby	1995-1996	Lester Aultman
1960-1961	Rudy Ewing	1996-1997	Jack S. Moody
1961-1962	Xavier M. Franscogna	1997-1998	George B. Vockroth
1962-1963	Robert B. Ross	1998-1999	Rick L. Ericksen
1963-1964	William A. Skees	1999-2000	Stanley King
	Marvin Oxley	2000-2001	John C. Marble
1964-1965	James F. Bollman	2001-2002	Andrew T. Sylte
1965-1966	Sankey L. Blanton	2002-2003	Aaron Lasker
1966-1967	Alan Jackson	2003-2004	John G. Cox
1967-1968	Julius M. Ridgway	2004-2005	James E. Starnes
1968-1969	Edward D. Minihan	2005-2006	Todd Hines
1969-1970	Kevin E. Cahill	2006-2007	Bob Schneeflock
1970-1971	John Lancaster	2007-2008	Tony Stuart
1971-1972	Larry Boland	2008-2009	Lisa Ivshin
1972-1973	Charles Barton	2009-2010	Joe Johnson
		2010-2011	Brian Sims
		2011-2012	Stanley King
		2012-2013	Jim Files
		2013-2014	Neil Barnes