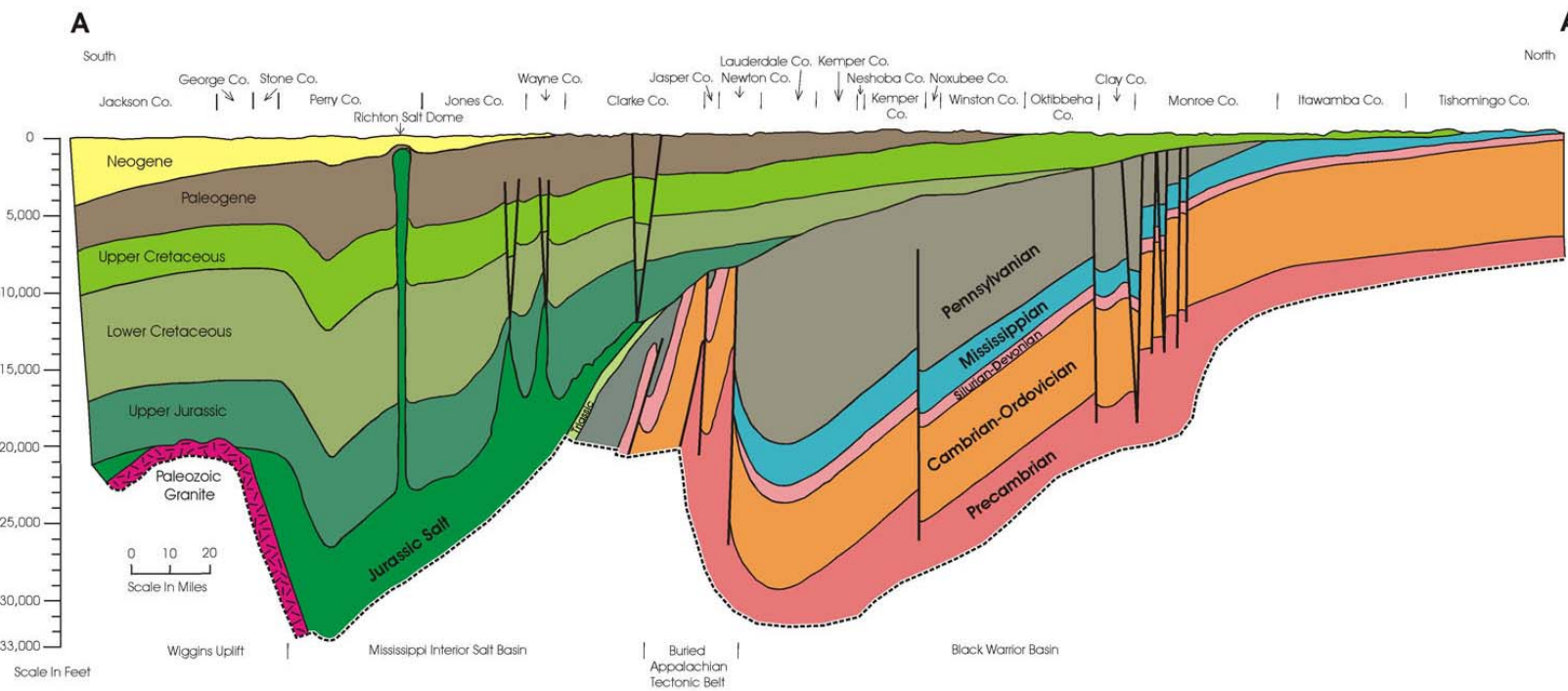


MISSISSIPPI GEOLOGICAL SOCIETY eBULLETIN

Volume 63

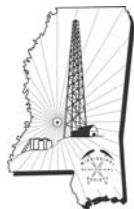
No. 6

February 2015



**FEBRUARY SPEAKER: DAVID T. DOCKERY III, RPG
STRUCTURAL GEOLOGY OF MS AND OCCURRENCE OF OIL FIELDS**

**MONTHLY ARTICLE:
REPAIRING THE MANSHIP HOUSE FOUNDATION**



www.missgeo.com



MGS 2014-2015 BOARD OF DIRECTORS

Officers

President	Ezat Heydari	Jackson State	j00103248@jsums.edu	(601) 979-4230
1st Vice President	Jack Moody	Independent		
2nd Vice President	Joe Johnson	Spooner	jjohnson@spoonercompanies.com	(601) 898-7444
Treasurer	Bill Bagnall	BLM	wbagnall@blm.gov	(601)-977-5417
Webmaster	Steve Walkinshaw	Vision Exploration	steve@visionexploration.com	(601) 607-3227
Advertising	Matt Caton	Tellus Operating	mcaton@tellusoperating.com	(601) 898-7444
Editor	Matt Caton	Tellus Operating	mcaton@tellusoperating.com	(601) 898-7444

Boland Scholarship

President	Jack Moody	Independent		
Secretary	Dave Cate	Pruet Oil		(601) 948-5279
Members	Joe Johnson	Spooner		
	Tony Stuart	Venture Oil & Gas		(601) 428-7725
	James Starnes	MDEQ		
	Bob Schneeflock	Geodigital Consulting		(601) 853-0701

Honorary Membership

Chairman	Charles H. Williams, Jr. Vaughey & Vaughey		(601) 982-1212
Members	Dudley J. Hughes	Hughes South Corp.	(601) 420-9892
	E. Ralph Hines	Moon-Hines	(601) 572-8300
	Jerry Zoble	Independent	

MGS Representatives

AAPG	Maurice Birdwell	Independent	(601) 936-6939
GCAGS	Danny Harrelson	U.S. Army R&D	(601) 634-2685

Other

Environmental	John Ryan	Allen	(601) 936-4440
Historian	Stanley King	Independent	(601) 842-3539



PRESIDENT'S LETTER

Ezat Heydari



Greetings:

When I was a graduate student, I had a desperate need for information and I still do. My needs were primarily limited to scientific journal articles. To go through volumes of reference books about published geology articles was truly cumbersome.

It was a heaven when GeoRef search engine came along in early to mid 1980's. Type "dolomite" in the "keyword" tab and there it was 1000s of references about dolomite. Of course, it was impossible to track or to locate these articles about dolomites. Later, I learned to limit my searches to exactly what I wanted to know about dolomite to limit the results to several hundreds which could be tracked, copied, and read. So, GeoRef became my new toy.

However, the work began after the Georef search was completed. In afternoons I took trips to the library filling my backpack with as many journals that I could carry. Next day, articles were copied, read, and filed. You can imagine how time consuming that was. Fortunately, my department gave us free access to copiers.

When I moved to Mississippi, I realize what I had done. Relocating 20 cabinets full of articles was not easy. Electronic publishing in late 1990's became a solution. Trips to the library, coping, and cataloging were no longer needed. Just download the articles in a PDF form and save them on your desk top. It was automatically cataloged and searchable. The problem now was having access to these electronic journals.

The hurdle of "access to journals" is also being removed. Slowly but surely we are moving in the direction of free access to data. Open access journals are leading the way. Access for fee journals are changing their ways and are becoming open access one by one. The best is this: you can now upload that one U-haul load of articles onto your Ipad and practically have your library with you where ever you go. This is truly a blessing.

Let us look forward to the day when we have most or all of information related to the Geology of Mississippi electronically and in free access for everyone. A few days ago I ran into a site (http://ngmdb.usgs.gov/ngmdb/ngmdb_home.html) where geologic maps of all States in the Union and even their quadrangle maps are now electronic and available to all.

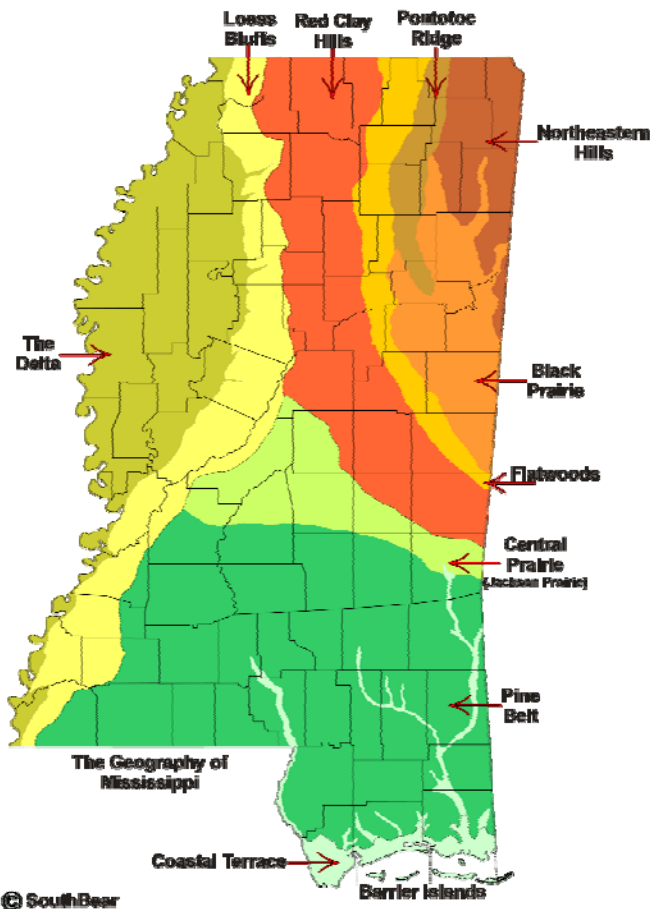
I look forward to see you on Thursday.

Regards,

Ezat

2013-2014 MGS MEETING SCHEDULE

When	What/Who	Where
September 11, 2014	Fall BBQ	Jackson Yacht Club-5:30pm
October 9, 2014	John Allen Tuscaloosa Marine Shale	River Hills – 11:30am
November 13, 2014	Carl Fiduk Tectonics and Depositional Episodes of the GOM	River Hills – 11:30am
December 5, 2014	MAPL Christmas Party and Dance	Duling Hall - 7pm
January 8, 2015	Frank Vincent Shallow Oil “Re-Discovery” at Washington Field	River Hills – 11:30am
February 12, 2015	David T. Dockery III, RPG Structural Geology of MS and Oil and Gas Fields	River Hills – 11:30am
March 12, 2015	TBD	River Hills – 11:30am
April 9, 2015	Boland Scholarship Awards	River Hills – 11:30am
May 14, 2015	Spring Fling	Jackson Yacht Club– 5:30pm



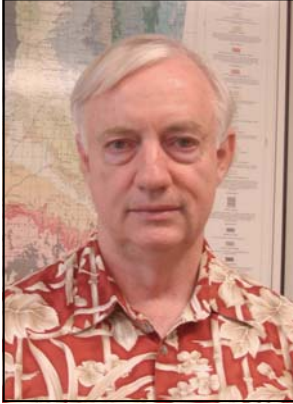
OFFICERS MEETINGS

September 4, 2014
October 7, 2014
November 11, 2014
January 6, 2015
February 10, 2015
March 10, 2015
April 7, 2015
May 12, 2015



JANUARY SPEAKER

David T. Dockery III, RPG



Dr. David T. Dockery III, RPG

Native of Jackson, Mississippi.

B.S. in Petroleum Geology from Mississippi State University.

M.S. in Geology from the University of Mississippi.

Ph.D. from Tulane University -- first student in the Tulane-Duke-Emery

Ph.D. Geology consortium (studied at Duke for one year).

Worked as Chief of the Surface Geology Division for the Mississippi Geological Survey (now Office of Geology) from 1978 to present.

Author of the Mississippi stratigraphic columns for AAPG's COSUNA Gulf Coast chart.

Taught Invertebrate Paleontology at Millsaps College for several years (had Brian Sims, James Sparks, and Steve Walkinshaw as students in the same class in the Spring of 1981).

Was the first recipient of the Gilbert Harris Award in recognition of excellence in systematic paleontology in 1993 awarded by the Paleontological Research Institution of Ithaca, New York.

Recipient of the Gulf Coast Section of SEPM Distinguished Service Award 1993.

Published 9 books concerning Mississippi paleontology and geology and contributed chapters to volumes on the Paleocene-Eocene boundary and Eocene-Oligocene boundary published by Columbia University Press.

Patronymic species: I've had 13 fossil species named after me, including one crinoid, two fish, one mammal, and 9 mollusks.

One gastropod species I named in 1977 was recently discovered to have "living fossil" extant species in the Indo-Pacific realm.

The Structural Geology of Mississippi and the Occurrence of Oil and Gas Fields

Abstract: Mississippi's geology is largely the story of three sedimentary basins and the uplifts that bound them. The Black Warrior Basin is bound by the ancient continent Laurentia to the north, the Ouachita Tectonic Belt to the southwest, and the Appalachian Tectonic Belt to the southeast. The northern part of the basin contains basinward (down to the south) normal faults, while the basin is bound to the south by northward projecting thrust faults in the Ouachita and Appalachian belts. The Black Warrior Basin records the assembly of the Supercontinent Pangea, from a period of basin extension to basin closure, with the collision of Laurentia and the Gondwana African-South American components in Permian time. Triassic rifting along the southern margin of the Ouachita Tectonic Belt, created the Mississippi Interior Salt Basin and the incipient Gulf of Mexico. Jurassic rifting expanded the Gulf of Mexico and created a failed rift system and associated igneous activity along the axis of the present-day Mississippi Embayment. In Cretaceous time, igneous activity migrated southward to the Sharkey Platform and the Jackson Dome, and even as far south as the Door Point Volcano at the mouth of the Mississippi River. Bounding the the Mississippi Interior Salt Basin to the south are a series of structural highs, some of Permian age (i.e. the Wiggins Uplift) and some created in early Tertiary time. South of these highs, is the present Gulf of Mexico Basin and its thick sequence of Neogene sediments. Paleozoic oil and gas fields are restricted to the Black Warrior Basin; Jurassic, Cretaceous, and Paleogene fields occur in the Mississippi Interior Salt Basin, and Neogene fields are present in coastal Mississippi on the northern margin of the Gulf of Mexico Basin.



SEMINAR

CARBONATES APPLIED TO HYDROCARBON EXPLORATION AND EXPLOITATION

March 23-27, 2015

WHERE: Hilton University of Houston Hotel, Houston, Texas.

COST: \$2795 (Unchanged from 2014)

INSTRUCTOR: JEFFREY J. DRAVIS (Consultant - Dravis Interests, Inc., Houston)

FOR: Geologists, Geophysicists, Reservoir Engineers, Log Analysts and Managers.

GOAL: After this seminar, each delegate will be able to describe and classify typical carbonate rocks, interpret facies relationships, delineate stratigraphic sequences and correlate facies within them, evaluate reservoir quality in limestones and dolomites, and better understand subsurface carbonate plays and reservoirs. This is an excellent refresher course.

This five-day, in-house seminar introduces participants to established principles of carbonate sedimentology applied to hydrocarbon exploration and development geology. Using a highly acclaimed, hands-on and rock-based approach, each participant learns to describe typical carbonate rocks, delineate facies and sequences, evaluate reservoir quality, relate carbonates to log and seismic expression, better predict play relationships in the subsurface, and construct a time-stratigraphic facies framework essential for both accurate regional correlation of carbonate sequences and zonation of carbonate reservoirs. Lectures are reinforced with exercises and problems keyed to 10 identical sample rock sets, each containing 56 representative samples from around the world. A core problem with logs, based on a real exploration target, further reinforces principles presented in this seminar. A 750+ page notebook, with color copies of all power point slides shown in lectures, accompanies the course, as well as a reference book with pictures of samples used in various exercises. This seminar has been presented to industry over 100 times!

INSTRUCTOR'S QUALIFICATIONS

Jeffrey J. Dravis (Ph D) is a technical consultant and instructor in carbonate geology with more than 35 years of worldwide industry and field experience in all aspects of applied modern and ancient carbonate geology. This experience includes 8 years with Exxon Production Research Company where he headed up Exxon's worldwide training efforts in carbonates. Since 1987, he has taught over 200 basic and advanced carbonate seminars.

Past consulting projects (>130 in number) include reservoir studies in Texas (Paleozoic & Mesozoic), Devonian of W. Canada and Russia, Jurassic and Cretaceous of Gulf of Mexico, and Cretaceous of Tunisia; and exploration studies in the Jurassic and Cretaceous of the U.S. Gulf Coast, including Jurassic Smackover/Haynesville and Cretaceous James Lime, Edwards, Glen Rose, Austin Chalk/Buda/Eagleford Limestones, Devonian/Mississippian of W. Canada, Permian of west Texas and Thailand, Pennsylvanian of Four Corners region, and Mesozoic of western and northern Africa. See web site for details.



GEOLOGY POST

ARTICLES, PAPERS or NEWS?

ATTENTION!!!!!! Industry, Professors and Students:

I am adding a dedicated section that includes more content from the industry and our schools.

Submissions can include anything from professional papers, thesis abstracts, job opportunities to pictures. Anything!!!!

If you have any information or news you would like to share with the Society **PLEASE** email them to the MGS Editor at:

mcaton@tellusoperating.com

Thanks & Regards,

Matt Caton
Editor



Upcoming IHS Kingdom and Petra Training

March Training Courses

Kingdom

- Basic Geological Data Loading
- Basic Geophysical Data Loading
- Seismic Interpretation
- Microseismic
- Rock Solid Attribute Generation and Interpretation
- Geological Interpretation
- AVO Analysis for Hydrocarbon Detection - AVOPAK
- Geosteering
- Basic GeoSyn
- Exploring in the 3D Workspace (VuPAK)

Register Here

Contact Us

Cheryl Adams
Sr. Training Coordinator
geoscience.training@ihs.com

Tel: 918.499.5718

Visit our website at
ihs.com



Kingdom classes will be offered in **Houston** and **Oklahoma City** during the month of March. To view details about course offerings, dates and these (and other) locations please [click here](#).

Petra

- Basic Overview
- Basic Data Loading
- Advanced Mapping Techniques
- Advanced Cross Sections and Correlation Techniques

Petra classes will be offered in **Dallas**, **Englewood/Denver**, **Houston**, **Midland**, **Oklahoma City** and **Tulsa** during the month of March. To view details about course offerings, dates and these (and other) locations please [click here](#).

Further training questions?

918.499.5718

geoscience.training@ihs.com



AAPG

Advancing the World of Petroleum Geosciences™

Dear Student Chapters:

AAPG is proud to announce the winner of the December 2014 Wiki Write-off Competition.

Congratulations to the Universitas Gadjah Mada Student Chapter for the article titled [Well log analysis for reservoir characterization](#). This winning chapter will receive a check for \$500.

The second place article was [Geodynamics of terrestrial exoplanets](#), by Louisiana State University.

Tied for third place were the articles [Ti in zircon geothermometer](#), by Louisiana State University and [Sandstone sedimentology and stratigraphy](#), by Makerere University Kampala.



We would like to sincerely thank the four Student Chapters who participated in the inaugural Wiki Write-off Competition:

- Universitas Gadjah Mada
- University of Ilorin
- Louisiana State University
- Makerere University Kampala

The next Student Chapter AAPG Wiki Write-off Competition will begin March 1. The details will be announced via email to all Student Chapters.

[Email AAPG Wiki](#) with questions regarding the AAPG Wiki Write-off Competition.





MGS MONTHLY COLUMN

David T. Dockery III, RPG

REPAIRING THE MANSHIP HOUSE FOUNDATION

The first page of *Clarion-Ledger's* January 25, 2013, Metro-State section contained an article by Sherry Lucas entitled “Manship house repairs unearth little treasures.” The Manship House Museum, once home to Civil War Jackson Mayor Charles Henry Manship, was closed for repairs in July 2010 after shifting in the Yazoo Clay moved the foundation more than 13.5 inches out of level. This was not the first foundation repair of the structure. In 1980, the foundation was repaired after the building moved 8 inches out of level. The Manship House Museum is part of the museum division of the Mississippi Department of Archives and History. The current foundation repair is Phase One of the building’s restoration. Museum division director Lucy Allen described the repair as “major surgery,” noting that three chimneys had to be demolished and rebuilt from the bottom up (not to mention lifting the whole house off its foundation on steel I beams). Allen added, “With Phase One, we’re on solid footing—no pun intended.”

The *Clarion-Ledger* article reported that, in addition to historical artifacts found during the excavation, there were “blue-tinged hunks of fossil-dotted clay” in the “stable layer 40 feet down.” In August 2012, I answered a request from Manship House Museum director Marilyn Jones to examine the fossils excavated from the construction of the building’s new pilings (Figure 1).



Figure 1. Left, Manship House with new foundation and reconstructed chimneys. Right, construction of new piling at front of house. Pictures were taken on January 29, 2013, on left and August 2, 2012, on right.



MGS MONTHLY COLUMN

David T. Dockery III, RPG

As it happened, I arrived to examine the excavated spoil when no workers were present. The spoil contained cuttings of bedrock strata in reverse order, with the brown weathered Yazoo on the bottom and the unweathered blue-gray clay from the “stable layer” forty feet down on top. The blue-gray Yazoo Clay contained chalky fossil seashells (Figure 2).



Figure 2. Left, Yazoo Clay excavated from a hole for a new piling at the Manship House Museum. Left, reverse stratigraphy--weathered brown Yazoo Clay on bottom, unweathered blue-gray clay on top. Right, close up of unweathered Yazoo Clay with chalky fossil seashells. Pictures were taken on August 2, 2012.



MGS MONTHLY COLUMN

David T. Dockery III, RPG

In October of 2013, work on a new perimeter foundation skirt was underway in spectacular fashion with a trailer-mounted boom concrete pump, pumping concrete over a building to the foundation site. Usually when I go with a camera to a construction site, I'm greeted by a big burly foreman who wants an account of what I'm doing—but, not this time. The big burly man was the site engineer, Britt Maxwell, a classmate from MSU (Figure 3).



Figure 3. Left, site engineer Britt Maxwell and Manship House Museum director Marilyn Jones. Right, the Manship House rests on steel I beams as a new perimeter skirt foundation is poured by a trailer-mounted boom cement pump. Pictures were taken on October 5, 2012.

Maxwell has fixed many foundations in the Jackson area and, from years of experience, has developed a formula of what to do when a foundation moves on the Yazoo Clay. The clay does not move and stop; it keeps shifting over the years. Figure 4 shows what repairs are required based on a founda-

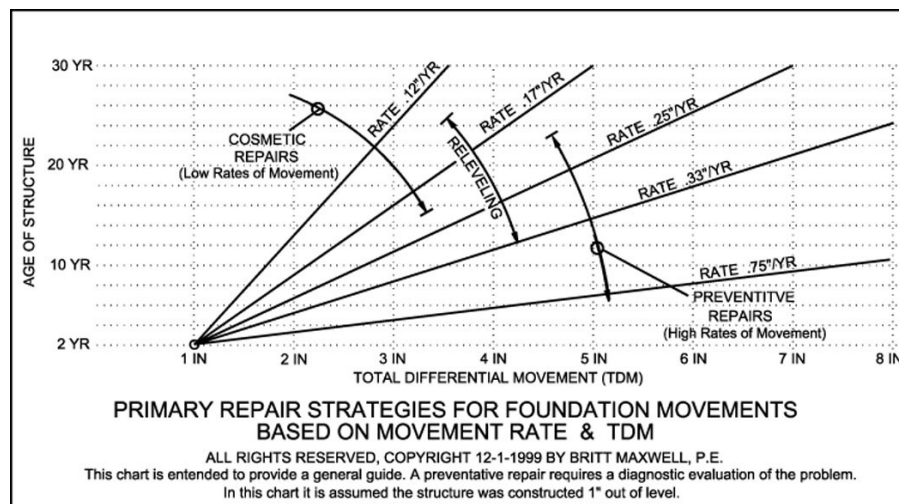


Figure 4. Repair recommendations based on the annual rate of movement from Britt Maxwell.



Power Plays: Geothermal Energy in Oil and Gas Fields

Conference Workshop
May 18-20, 2015
SMU Campus in Dallas, Texas

The SMU Geothermal Lab is hosting our 7th international energy conference and workshop, *Power Plays: Geothermal Energy in Oil and Gas Fields*, on May 18-20, 2015 on the SMU Campus.

Over 200 individuals in field operations, project development, technology, finance, engineering and resource assessment from the geothermal, oil, gas and renewable energy sectors are expected to attend.

The conference goal is to connect attendees with the knowledge, technical expertise and equipment options they need to successfully transition existing oil or gas fields into an electricity-generating system. This year our focus broadens to include geophysical exploration topics.

Topics of discussion include power generation from flare gas, waste-heat, and geothermal fluids, along with research updates on induced seismicity, onshore and offshore thermal maturation, Play Fairway Analysis and basin modeling. SMU researchers will present results from their Fall 2014 Eastern North American Margin Community Seismic Experiment (ENAM CSE) research. In addition, equipment such as one-well systems, desalination and other new technologies will be explored.

A pre-conference workshop on May 18th, **A Primer on Geothermal Energy Resources**, provides a focused introduction for those new to the geothermal and energy communities. Four Continuing Education Credits are provided. The workshop is limited to the first 50 registrants to provide a classroom atmosphere with ample time for questions and answers.

The conference details are:

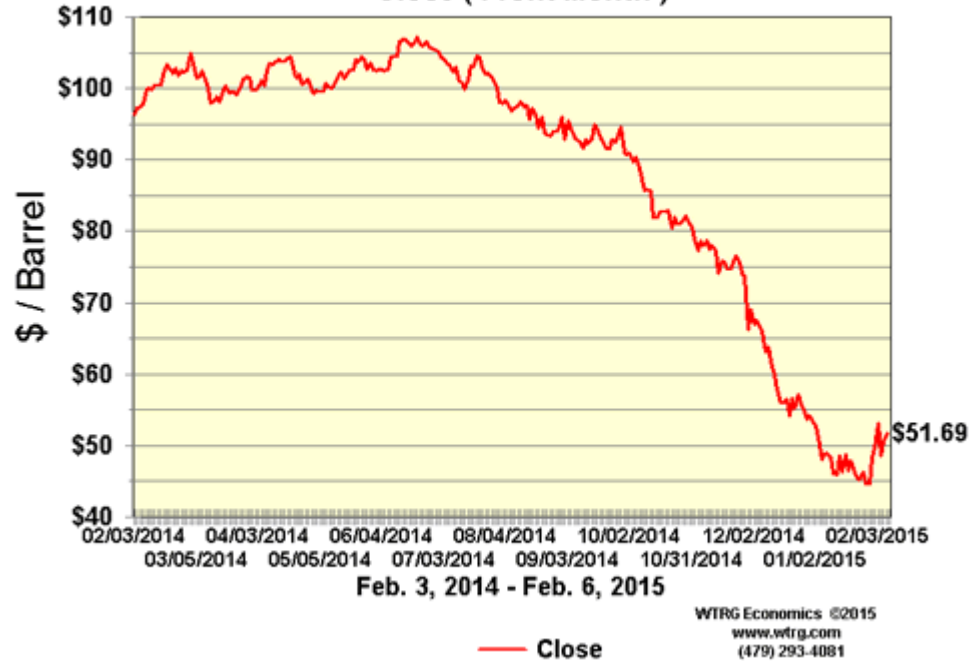
Name: *Power Plays: Geothermal Energy in Oil and Gas Fields*
Date: Workshop May 18; Conference May 19-20, 2015
Location: SMU Campus, Dallas, Texas
Website: <http://www.smu.edu/Dedman/Academics/Programs/GeothermalLab/Conference>
Contact: Maria Richards, mrichard@smu.edu, 214-768-1975



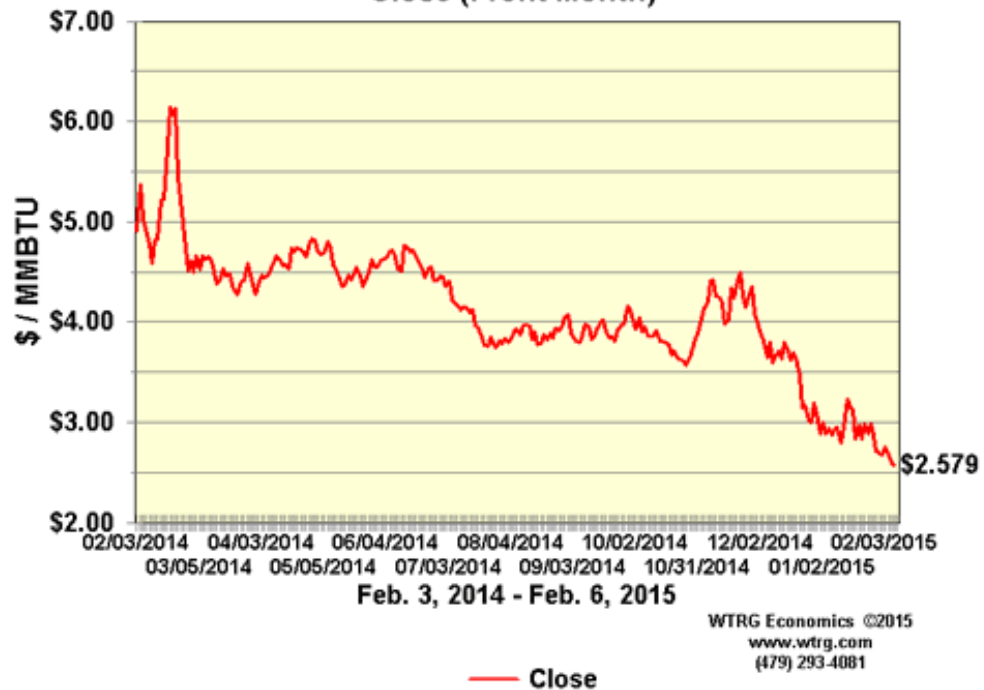


CURRENT PRICES

NYMEX Crude Oil Futures
Close (Front Month)



NYMEX Natural Gas Futures
Close (Front Month)





JOB OPPORTUNITIES

Environmental Scientist/Geologist

We are EnSafe Inc., an employee-owned, global professional services firm. We strive to provide cutting-edge, creative solutions for our clients. We are currently accepting applications for a staff level geologist, with an environmental focus to support several clients out of our Jackson, MS.

Responsibilities include but are not limited to: performing site investigation activities, remedial system design and operation, subcontractor oversight; preparation of work plans; management of field health and safety, drilling, and scheduling; writing technical reports; and making technical recommendations for site assessment and remediation activities. Experience managing project schedules, staffing, and budgets is a plus, as is experience conducting Phase I Environmental Site Assessments (ESAs). We require a minimum of a BS in Geology with two to five years of experience. HAZWOPER training and certification is required.

Our employees are outgoing, self-motivated, and thrive in a fast-paced consulting environment. Communication, written and verbal, is also critical to success. Overnight and air travel will be required.

We offer a competitive salary and benefits, an outstanding work environment, and the opportunity to work on some really cool projects. For consideration, submit your cover letter, salary expectations, and resume to: resume@ensafe.com

Check us out on the web at: www.ensafe.com
EEO/AA





CALL FOR PAPERS
65th GCAGS Convention
September 19-22, 2015 •
George R. Brown center
Houston, Texas



New Oil and Gas Discoveries
Un-Conventional Plays
Development Field Studies
GOM Shelf and Onshore Plays
Salt Tectonics and Traps
Mexico and Caribbean Plays
Geophysical Technology
Gulf of Mexico Deepwater
Environmental Geology
Coastal Geology and Surface Impact
Geology-Geophysics-Engineering
Portfolio Management
Climate/ Public Awareness Issues

To participate in the 2015 GCAGS Convention
Oral and Poster presentations

An abstract of up to 250 words should be submitted no later than **December 13, 2014** to Technical Program Chair, Linda Sternbach (linda.sternbach@gmail.com).

After notification of acceptance on **January 20, 2015**, authors submit extended abstracts (1-2 pages) or full papers up to 12 pages to the GCAGS Transactions by **February 20, 2015** to GCAGS Transactions Editor, Steve Levine.

Full instructions for manuscript submissions will be posted online at www.gcags2015.com.

Publish your work in the upcoming GCAGS Journal !!
(a new peer-reviewed journal of Gulf Coast Geoscience).

Instructions: An extended abstract of at least 600 words, including 1–2 representative figures, Should be submitted by **December 2, 2014** to Journal Editor, Barry Katz (BarryKatz@chevron.com).

After acceptance, a full manuscript must be submitted by **March 24, 2015**.

Full instructions for manuscript submissions will be posted online at www.gcags2015.com.



BOLAND SCHOLARSHIP WATCH

Faculty & Students,

This is a new year and the Mississippi Geological Society along with the Boland Scholarship Fund would like to remind you that we want to honor the most outstanding overall students for the 2014-2015 year.

Each year, the Boland Scholarship awards 1 student from each institution a check that rewards students for their hard work and dedication to the Geosciences and their community.

We look forward to a great year and hope to see you at our monthly meetings.

Best Regards,

Matt Caton
Editor



THE UNIVERSITY OF
SOUTHERN
MISSISSIPPI

MILLSAPS
COLLEGE



BOLAND SCHOLARSHIP FUND

Thank you to the following sponsors for their generous donations to the Boland Scholarship Fund!

Dave Cate

George T. Smith

Jack Douglas

Chris Franks

I. Meade Hufford

Maurice Birdwell

Charlie Williams

Jim Michael



2014-2015 MGS MEMBERS

Ken Adams	Chris Johnson
Bill Bagnall	Lars Johnson
Larry Baria	Joe Johnson
Neil Barnes	Karl Kaufmann
Tiffany Berry	Stanley King
Maurice Birdwell	Cody Lenert
Randy Bissell	Joe Lott
Michael Bograd	Ken Magee
Chris Bowen	Joe McDuff
Keith Bowman	Tom McMillan
Robert Branson	Jim Michael
Alvin Byrd	David Miller
Matt Caton	Jack Moody
Mark Chapman	Charlie Morrison
Phil Cook	Lew Murray
Jamie Crawford	James Nix
Wesley Day	James Norris
David Dockery	Jana Payne
Charles Doubek	Philip Reeves
Jak Douglas	Armando Ricci
David Dunton	Mike W Taylor
Dave Easom	Bob Schneeflock
Jim Files	Thomas Seitz
Chris Franks	George Self
Stan Galicki	Charles Smith
Bob Gaston	George Smith
Tom Giosa	Jimmy Sparks
Paul Gribas	Charles Sternbach
David Hancock	Jim Stevens
Danny Harrelson	Ed Sticker
Frank Heitmuller	Tony Stuart
Robert Herr IV	John Sullivan
Ezat Heydari	Andrew Sylte
David Hilton	Stan Thieling
Todd Hines	Sid Thompson
Johnny Holifield	Watts Ueltschey
Bernard Holman	Wayne Upchurch
I. Meade Hufford	Janet Verret
Lisa Ivshin	Steve Walkinshaw
Ron Jinkins	Joe White
James Landrem	Mark Wyatt

* This list is updated on a monthly basis.
Please contact Bill Bagnall if you have any questions.

GEO LINK POST

USGS TAPESTRY OF TIME AND TERRAIN <http://tapestry.usgs.gov> The CCGS is donating to all of the 5th and 6th grade schools in the Coastal Bend. Check it out—it is a spectacular map. You might want a framed one for your own office. The one in my office has glass and a metal frame, and it cost \$400 and it does not look as good as the ones we are giving to the schools. Call Owen 510-6224 if you want one for your office for \$150. Duncan, Mike, Chris, Dave, Bob Randy, Seb., Kevin, Ken, Craig, Patrick, Robert.

FREE TEXAS TOPO'S <http://www.tnris.state.tx.us/digital.htm> these are TIFF files from your state government that can be downloaded and printed. You can add them to SMT by converting them first in Globalmapper. Other digital data as well.

FREE NATIONAL TOPO'S [http://store.usgs.gov/b2c_usgs/b2c/start/\(xcm=r3standardpitrex_prd\)/.do](http://store.usgs.gov/b2c_usgs/b2c/start/(xcm=r3standardpitrex_prd)/.do) go to this webpage and look on the extreme right side to the box titled TOPO MAPS DOWNLOAD TOPO MAPS FREE.

<http://www.geographynetwork.com/> Go here and try their top 5 map services. My favorite is 'USGS Elevation Date.' Zoom in on your favorite places and see great shaded relief images. One of my favorites is the Great Sand Dunes National Park in south central Colorado. Nice Dunes.

<http://antwrp.gsfc.nasa.gov/apod/astropix.html> Astronomy picture of the day — awesome. I click this page everyday.

<http://www.spacimaging.com/gallery/ioweek/iow.htm> Amazing satellite images. Check out the gallery.

<http://www.ngdc.noaa.gov/seg/topo/globegal.shtml> More great maps to share with kids and students.

www.geo.org Don't forget we have our own web page.

<http://micro.magneet.fsu.edu/primer/java/scienceoptiscu/owersof10/>

<http://asterweb.jpl.nasa.gov/gallery/default.htm> Great satellite images of volcanoes

<http://terra.nasa.gov/gallery/> More here

www.ermapper.com They have a great free downloadable viewer for TIFF and other graphic files called ER Viewer.

www.drillinginfo.com This is an incredible (subscription) well and completion data service for independents. Can be demo'ed for free.

<http://terrasrver.com/> Go here to download free aerial photo images that can be plotted under your digital land and well data. Images down to 1 meter resolution, searchable by Lat Long coordinate. Useful for resolving well location questions.

<http://www.fs.fed.us/gpnl/volcanocams/msh/> This is a live cam of Mt. St. Helens refreshed every 5 minutes. At the bottom are old videos of past eruptions in this cycle. It is worth a watch especially now.



MGS HONORARY MEMBERS

Esther Applin*

Verne Culbertson *

David C. Harrell*

Dudley J. Hughes

Walter P. Jones*

Winnie McGlammery*

Maurice E. Miesse*

Marvin E. Norman*

Thurston Connell Rader*

Henry Toler*

Charles H. Williams

David Cate

Paul Applin*

H. Leroy Francis*

Oleta R. Harrell*

Urban B. Hughes*

Harold Karges*

Thomas McGlothin*

Emil Monsour*

Marvin L. Oxley*

Baxter Smith*

H. Vaughn Watkins

Jerry Zoble

Lawrence F. Boland*

Jim Furrh*

Ralph Hines

Wendell B. Johnson *

Wilbur H. Knight*

Frederic F. Mellen*

William H. Moore*

Richard R. Priddy*

Harry V. Spooner

Stewart W. Welch*

Julius Ridgeway

*** deceased**

MEMBERSHIP APPLICATION / RENEWAL FORM

MISSISSIPPI GEOLOGICAL SOCIETY

P.O. BOX 422, JACKSON, MISSISSIPPI 39205-0422

2014-2015

Membership year is June through May

New Membership (\$20/yr)_____ Renewal (\$20/yr)_____ Student (FREE)_____ Associate (\$20/yr)_____

Boland Scholarship Fund Donation \$_____ Total Amount Enclosed \$_____

Last Name:_____ First:_____ MI:_____

Mailing Address:_____

Office Phone:_____ Home Phone:_____ FAX:_____

E-mail Address: _____

College/University Attended: _____

Degree(s) Obtained and Year(s) Awarded: _____

Professional Associations, Certifications, & Licenses: _____

MGS ADVERTISING ORDER FORM

September 2013 – May 2014

I. Bulletin Advertisements:

<u>Size</u>	<u>Rate/Year</u>	<u>Amt. Remitted</u>
Full Page Ad (6" x 8")	\$500	\$ _____
1/2 Page Ad (6" x 4")	\$300	\$ _____
1/4 Page Ad (3" x 4")	\$200	\$ _____
Business Card Ad (1 1/2" x 3")	\$100	\$ _____
Professional Listing (1/2" x 3")	\$ 50	\$ _____

II. Web Page Advertisements (www.missgeo.com):

<u>Type of Web Page Ad</u>	<u>Rate/Year</u>	<u>Amt. Remitted</u>
Front Page Sponsor (Banner Ad – limit of 5)	\$500	\$ _____
Second Page Banner Ad	\$250	\$ _____
Professional Listing/Link	\$100	\$ _____

(Note: Please contact Steve Walkinshaw at (601) 607-3227 or mail@visionexploration.com for details concerning placing your ad on the MGS web site.)

Total Remitted \$ _____

Please make checks payable to the Mississippi Geological Society. If you have any questions, contact Matt Caton at (601) 898-7444 or mcaton@tellusoperating.com



**When time is money,
Wellsite Geoscience is
money well spent.**

Whether you're exploring a basin, producing a well or completing a shale play, time is money. That's why Weatherford Laboratories brings a suite of formation evaluation technologies right to the wellsite. Utilizing mud gas and cuttings, these technologies provide detailed data on gas composition, organic richness, mineralogy and chemostratigraphy in near real time. As a result, operators now have an invaluable tool to assist with sweet spot identification, wellbore positioning, completion design and hydraulic fracturing. We call it Science At the Wellsite. You'll call it money well spent.

SCIENCE AT THE WELLSITE™
www.weatherfordlabs.com

Formation Evaluation | Well Construction | Completion | Production
©2010 Weatherford. All rights reserved.



Jon Q=Petersen, President
Autie T. Orjias, V. P. / Land Manager
Dean Giles, Secretary / Treasurer
S. Cody Lenert, Geologist
Ryan Q=Petersen Land

(318) 222-8406
Fax (318) 222-6061

401 Edwards Street, Suite 1200
Shreveport, LA 71101
P. O. Box 1367
Shreveport, LA 71164

Email:
mei@marlinexploration.com

Joe R. White, Jr.
Petroleum Geologist

400 Travis St., Ste. 909
Shreveport, LA 71101
Ofc. 318-703-2311
Cell. 318-423-9828
Hm. 318-949-3539

AAPG CPG #5580
MS RPG #0097
LA RPG (SUBMITTED)
Jwhite1362@aol.com
Joerjr@gmail.com

Energy Land Services
Oil & Gas Leases
I. Meade Hufford, CPL
Owner



P. O. Box 302
144 Wharton Grove Ln
Weems, VA 22576
Phone: 804-438-5852
Fax: 804-438-9043
Cell: 713-705-7235
hufford1913@aol.com

KARL J KAUFMANN

504 KEYWOOD CIRCLE SUITE A FLOWOOD, MS 39232
PHONE: 601-936-3601
CELL: 601-209-0948
VALIOSO@BELLSOUTH.NET

BRUNINI

WATTS C. UELTSCHY

OFFICE (601) 960-6871 | FAX (601) 960-6902

E-MAIL WATTS@BRUNINI.COM | WWW.BRUNINI.COM

BRUNINI, GRANTHAM, GROWER & HEWES, PLLC
ATTORNEYS AT LAW

190 EAST CAPITOL STREET SUITE 100 JACKSON, MS 39201
MAILING ADDRESS: P.O. DRAWER 119 JACKSON, MS 39205

Baldwin Madden Energy, LLC
Oil and Gas Acquisitions and Development

Christopher D. Franks
Senior Geologist

333 Texas Street, Suite 1919
Shreveport, Louisiana 71101-3666
318-429-2204 / 318-429-2229 (fax)
chris.franks@BaldwinMadden.com

Oil & Gas solutions that work...

WWW.NEEL-SCHAFFER.COM



Environmental
Permitting/Planning

Water

Wastewater

Site Engineering

Pipeline Surveying

Geotechnical
Engineering

Construction/
Operations

Materials Testing



NEEL-SCHAFFER

Solutions you can build upon



BEAN RESOURCES, INC.

THOMAS A. GIOSA
Geologist

P. O. Box 52768 (70505)
1000 E. St. Mary Blvd.
Lafayette, La. 70503

Off. (337) 234-2326
Fax (337) 234-2330
Cell (337) 288-4089

PRUET OIL COMPANY, LLC

OIL & GAS EXPLORATION

217 WEST CAPITOL STREET

JACKSON, MS 39201

OFFICE: (601) 948-5279 FAX: (601) 944-1281

Joseph H. McDuff
Geologist



351 Chapel Loop
Mandeville, LA 70471
985.845.9430
jhmcduff@charter.net

Philip L. Cook

Petroleum Geologist

105 Livingston Drive
Madison, MS 39110

Cell: 601-954-7689
Email: pcook952@gmail.com



MGS PAST PRESIDENTS

1939-1940	Henry N. Toler	1973-1974	Larry Walter
1940-1941	Urban B. Hughes	1974-1975	W. E. "Gene" Taylor
1941-1942	J. Tom McGlothlin	1975-1976	Jerry E. Zoble
1942-1943	Dave C. Harrell	1976-1977	P. David Cate
1943-1944	K. K. "Bob" Spooner	1977-1978	Sarah Childress
1944-1945	L. R. McFarland	1978-1979	Les Aultman
1945-1946	J. B. Story	1979-1980	Philip R. Reeves
1946-1947	Frederic F. Mellen	1980-1981	Marshall Kern
1947-1948	H. Lee Spyres	1981-1982	Stephen Oivanki
	Robert D. Sprague	1982- 1983	James W. "Buddy" Twiner
1948-1949	Robert D. Sprague	1983- 1984	Charles H. Williams
1949-1950	E. T. "'Mike" Monsour	1984- 1985	C. Kip Ferns
1950-1951	J. Tate Clark	1985-1986	Steven S. Walkinshaw
	Charles E. Buck	1986-1987	J. R. "'Bob" White
1951-1952	George W. Field	1987-1988	Harry Spooner
1952-1953	James L. Md11in, Jr.	1988-1989	Stanley King
1953-1954	Wilbur H. Knight	1989-1990	Stan Galicki
1954-1955	A. Ed Blanton	1990-1991	E. James Files, Jr.
1955-1956	Gilbert A. Talley	1991-1992	Stephen L. Ingram, Sr.
1956-1957	Ben Ploch	1992-1993	Michael Noone/Stanley King
1957-1958	Emil Monsour	1993-1994	Brian Sims
1958-1959	Charles Brown	1994-1995	C. W. "Neil" Barnes
1959-1960	M. F. Kirby	1995-1996	Lester Aultman
1960-1961	Rudy Ewing	1996-1997	Jack S. Moody
1961-1962	Xavier M. Franscogna	1997-1998	George B. Vockroth
1962-1963	Robert B. Ross	1998-1999	Rick L. Ericksen
1963-1964	William A. Skees	1999-2000	Stanley King
	Marvin Oxley	2000-2001	John C. Marble
1964-1965	James F. Bollman	2001-2002	Andrew T. Sylte
1965-1966	Sankey L. Blanton	2002-2003	Aaron Lasker
1966-1967	Alan Jackson	2003-2004	John G. Cox
1967-1968	Julius M. Ridgway	2004-2005	James E. Starnes
1968-1969	Edward D. Minihan	2005-2006	Todd Hines
1969-1970	Kevin E. Cahill	2006-2007	Bob Schneeflock
1970-1971	John Lancaster	2007-2008	Tony Stuart
1971-1972	Larry Boland	2008-2009	Lisa Ivshin
1972-1973	Charles Barton	2009-2010	Joe Johnson
		2010-2011	Brian Sims
		2011-2012	Stanley King
		2012-2013	Jim Files
		2013-2014	Neil Barnes