

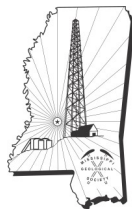
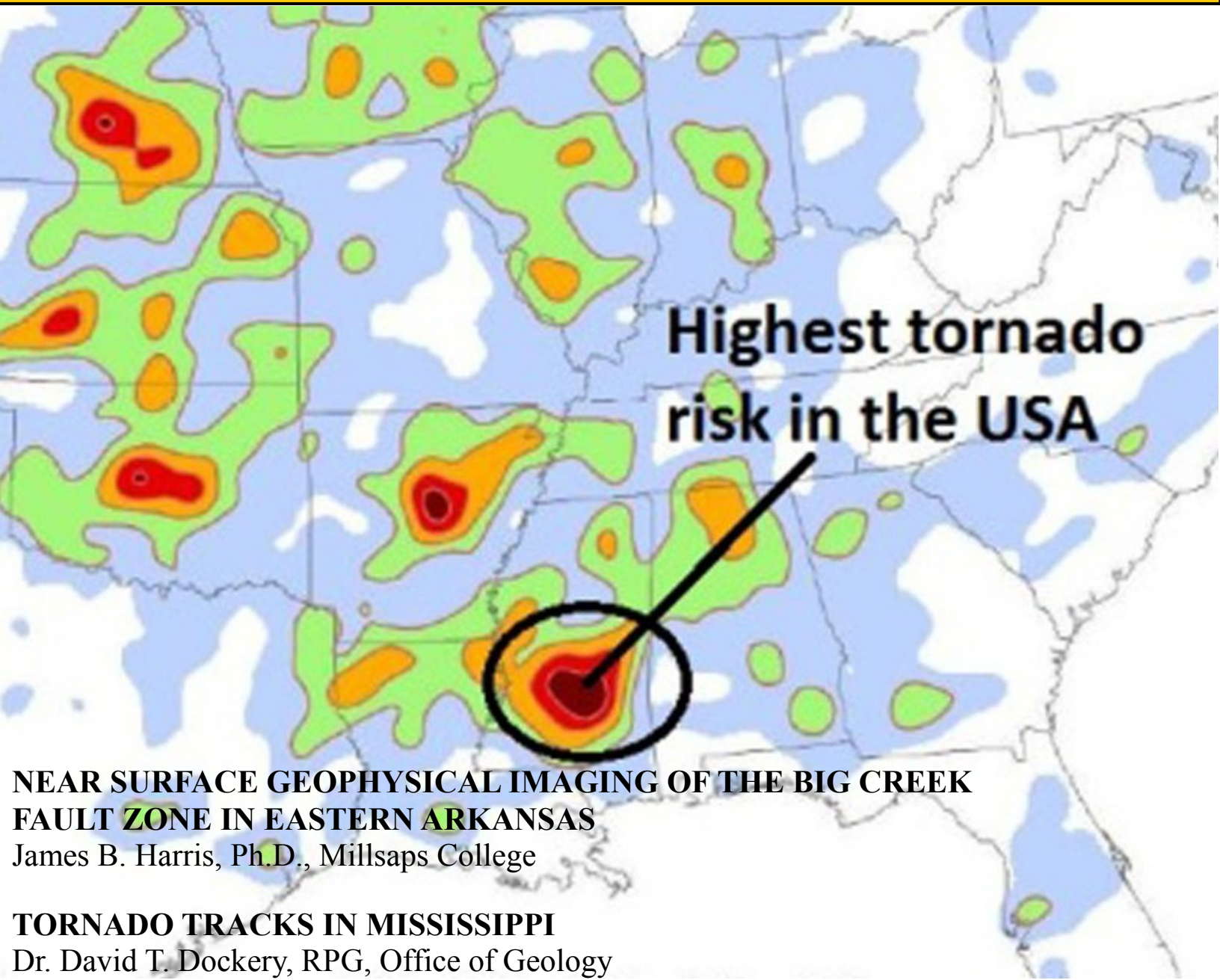
MISSISSIPPI GEOLOGICAL SOCIETY

eBULLETIN

Volume 67

No. 5

January 2019



www.missgeo.com

2018-2019 MGS MEETING SCHEDULE

When	What/Who	Where
September 13, 2018	Fall BBQ	Jackson Yacht Club-5:30pm
October 11, 2018	Ezat Heydari and Kiana McFadden	River Hills – 11:30am
November 8, 2018	ENERGY & POWER: SUPPLY & DEMAND Todd “Ike” Kiefer	River Hills – 11:30am
	Merry Christmas	
January 10, 2019	Dr. James B. Harris—Millsaps College	River Hills – 11:30am
February 7, 2019	TBD	River Hills – 11:30am
March 7, 2019	TBD	River Hills – 11:30am
April 11, 2019	Boland Scholarship Awards	River Hills – 11:30am
May 9, 2019	Spring Fling	Jackson Yacht Club– 5:30pm

**YOU MIGHT BE A
GEOLOGIST IF.....**

**YOU’VE EVER PLANNED A VACATION
BASED ON ROAD CUT QUALITY**

OFFICERS MEETINGS

September 11, 2018
October 9, 2018
November 6, 2018
January 8, 2019
February 5, 2019
March 5, 2019
April 9, 2019
May 7, 2019



MGS 2018-2019 BOARD OF DIRECTORS

Officers

President	Dr David Dockery III	MDEQ	ddockery@mdeq.ms.gov	(601) 961-5171
1st Vice President	Jimmie Sparks	MDEQ	jsparks@mdeq.ms.gov	(601) 961-5171
2nd Vice President	Joe Johnson	Spooner Petroleum	jjohnson@spoonercompanies.com	(601) 969-1831
Treasurer	Paul Parrish	MDEQ	pparrish@mdeq.ms.gov	(601) 961-5171
Webmaster	Steve Walkinshaw	Vision Exploration	steve@visionexploration.com	(601) 607-3227
Advertising	Matt Caton	Tellus Operating	mcaton@tellusoperating.com	(601) 898-7444
Editor	Matt Caton	Tellus Operating	mcaton@tellusoperating.com	(601) 898-7444

Boland Scholarship

President	David Dockery	MDEQ	(601) 355-4530
Secretary	Neil Barnes	Independent	
Members	Joe Johnson	Spooner Petroleum	(601) 969-1831
	Tony Stuart	Venture Oil & Gas	(601) 428-7725
	James Starnes	DEQ	
	Bob Schneeflock	Geodigital Consulting	(601) 853-0701
	Dave Cate	Pruet Oil	

Honorary Membership

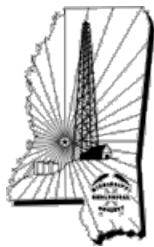
Chairman	Charles H. Williams, Jr. Vaughey & Vaughey	(601) 982-1212
Members	Dave Cate	(601) 718-9397
	Vaughn Watkins	(601) 898-9347

MGS Representatives

AAPG	Maurice Birdwell	Independent	(601) 936-6939
GCAGS	Danny Harrelson	U.S. Army R&D	(601) 634-2685

Other

Environmental	John Ryan	Allen	(601) 936-4440
Historian	Stanley King	Independent	(601) 842-3539



PRESIDENT'S LETTER

Dr. David T. Dockery III, RPG



David T. Dockery III, RPG

Happy and Blessed New Year everyone. Looking back over the years, Millsaps alumnus Bill Moore gave me a summer job with the Mississippi Geological Survey in 1969 and each summer until 1977 (They called summer workers sunbeams). He hired me fulltime in 1978 and was my first boss in my profession. When I went to Graduate School at Duke University, Millsaps alumnus Dunkin Herrin was the geology Department Chairman and editor of *Southeastern Geology*. Some of you are Millsaps alumni. So please show up for this week's MGS meeting to hear Millsaps Geology Professor Jamie Harris talk about seismicity, shallow geologic structures, and the Big Creek Fault Zone.

2019 began with part of the Federal Government shut down, stock markets going up and down in large swings, and perhaps a global recession. The good news is that the odds are against a U.S. recession in 2019. So this is a good time for me to hype a book, and for you to use that extra spending money to buy it. Actually, I am sharing recent feedback on *The Geology of Mississippi* from the U.S. Army Corps of Engineers.

From: Kevin Philley <kevin.d.philley@usace.army.mil>
Subject: Surface Geo of Choctaw County, MS for flora publication

Hi David,

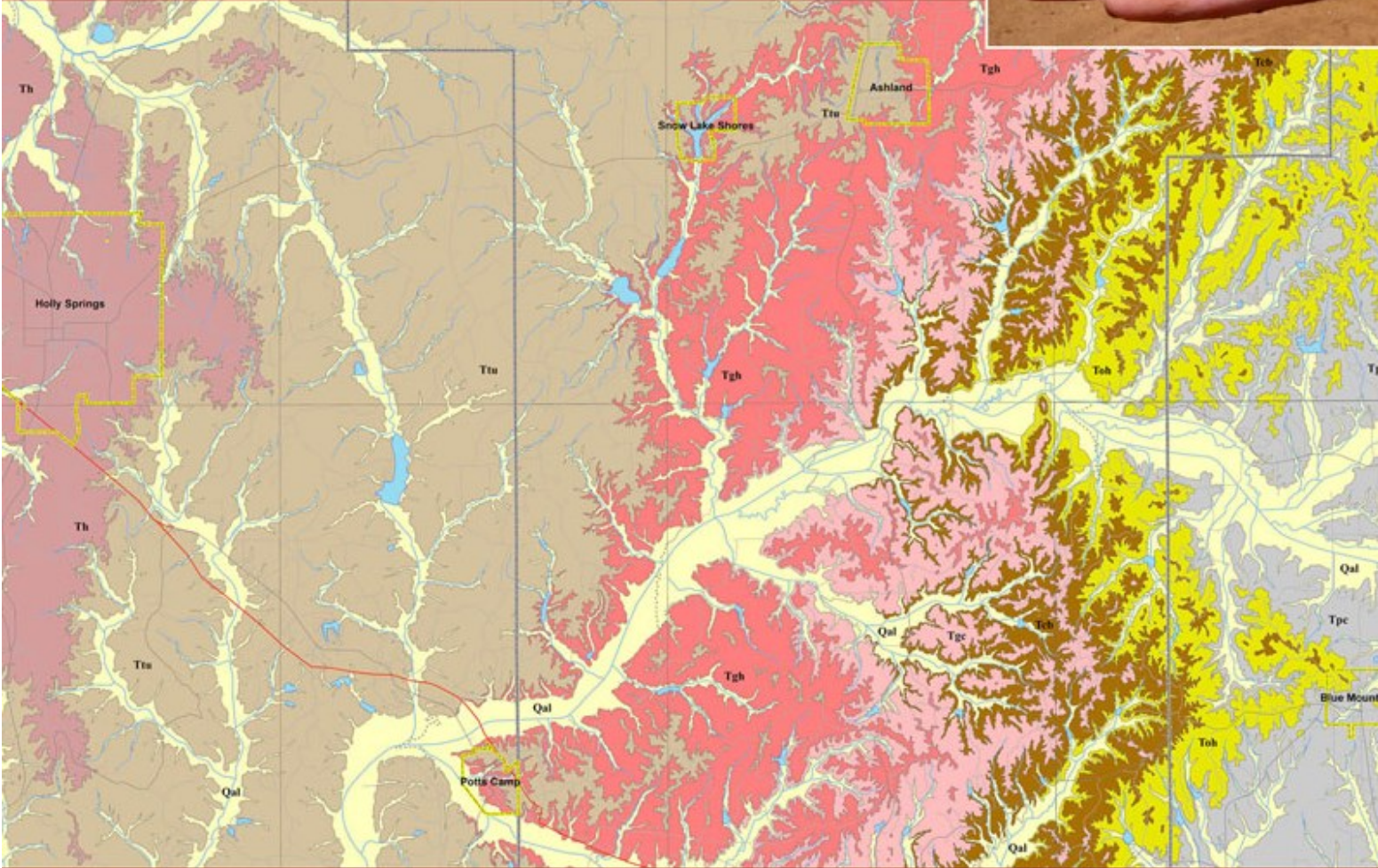
I just purchased the Geology of MS book to help with writing a flora survey paper (Survey of Choctaw Co.). I did not expect such a large and detailed work and was blown away. My wife yelled at me for attempting to read it in two days over the weekend. I was hoping to see something about the peculiar ironstone pipes that dot the landscape there but don't recall much on that. The reference to landslides by Pettry et al 1988 was helpful. The SE portion of the county (Tombigbee watershed) continues to experience landslides and significant downcutting of streams. I fear that some areas with rare plants have been lost. ...

The rest of the email contained questions that I was able to answer in slick publication style by sending the April issue of *Environmental News* with an article on "Mapping the Geology of the Natchez Trace Parkway" and the November 2017 issue with an article on "Mississippi River Basin Geology." Each geology article in *Environmental News* and the *Mississippi Geological Society Bulletin* is like an arrow in our quiver when it comes to answering information requests. It was also nice to answer questions by referring to pages and figures in *The Geology of Mississippi*, the book he had at hand (while yelled at over the weekend).

See you this Thursday and the MGS meeting.



THE GEOLOGY OF MISSISSIPPI



DAVID T. DOCKERY III AND DAVID E. THOMPSON
Foreword by Governor Phil Bryant





JANUARY SPEAKER

James B. Harris, Ph.D.



Near Surface Geophysical Imaging of the Big Creek Fault Zone in Eastern Arkansas

James B. Harris

Department of Geosciences

Millsaps College

The relationship between seismicity (contemporary and prehistoric) and shallow geologic structure is one of the most important topics of research related to seismic hazard evaluation in the Lower Mississippi Valley (LMV). Earthquakes that occur in the New Madrid Seismic Zone (NMSZ), the most active seismic zone in the central and eastern United States, dominate the seismic activity of the LMV. However, recent studies in eastern Arkansas and along the Chickasaw Bluffs in west Tennessee have reported Quaternary surface/near-surface deformation away from the most active zone of contemporary NMSZ microseismicity centered on the Missouri Bootheel and suggest previously unrecognized seismic hazards for areas in the LMV. The Big Creek Fault Zone (BCFZ) has been recognized and studied for nearly 75 years, although little detailed work regarding its geologic framework and potential earthquake hazard has been done. This presentation outlines an investigation of the near-surface structure of the BCFZ using shallow geophysical methods, including shear-wave (S-wave) seismic reflection and ground penetrating radar methods.



NEWS

MS Gem and Mineral Society

← → ↻ ⓘ Not secure | missgems.org 🔍 ☆

Mississippi Gem & Mineral Society

176 Tazan Avenue, Florence, Mississippi 39073-8720

- Home
- 2019 Gem, Mineral, Fossil & Jewelry Show in February
- Meetings
- Directions
- Lapidary School
- Membership
- Field Trips
- Classes and Newsletter
- Affiliations – AFMS & SFMS
- MGMS History – Some Highlights
- Contact Us




Home

The Mississippi Gem and Mineral Society (MGMS) was established to promote knowledge and the enjoyment of activities related to the earth sciences. MGMS activities focus on rocks, minerals, fossils, lapidary arts, and jewelry making.

It's amazing how diverse this rock hobby is. There's something for every interest and its a hobby that the entire family can enjoy together.

Visitors are always welcome to join us at one of our regular meetings held at our MGMS Lapidary School. We're located just a few miles south of the capitol city of Jackson at 176 Tazan Avenue, Florence, Mississippi.

Mississippi Gem & Mineral Society
.... Florence, Mississippi





CURRENT PRICES

Crude Oil Feb 2019

+ WATCHLIST

CREATE ALERT

☀ OPEN

Last Updated: Jan 8, 2019 at 9:33 a.m. EST
- Delayed quote

\$ **49.37**

▲ 0.85 1.75%

SETTLEMENT PRICE 01/07/19

\$48.52

< Advanced Charting 1M S % VOL



Natural Gas Mar 2019

+ WATCHLIST

CREATE ALERT

☀ OPEN

Last Updated: Jan 8, 2019 at 9:34 a.m. EST
- Delayed quote

\$ **2.922**

▲ 0.075 2.63%

SETTLEMENT PRICE 01/07/19

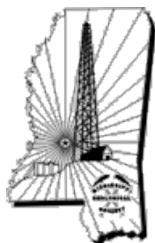
\$2.847

< Advanced Charting 1M S % VOL



Marketwatch





JOB POSTING



Sr. Geologist/Reservoir Engineer-01012791

Description

Do you have a passion for oil and gas exploration & development, in a variety of geographies, and a desire to live in the Pacific Northwest? As a Senior Geologist – Reservoir Engineer located at Weyerhaeuser's Seattle Headquarters, your primary responsibility will be oil and gas prospect generation and marketing, along management of our royalty production streams, on Weyerhaeuser's 13 million mineral acres, underlying our timberlands in continental United States.

In this role, you will have access to an extensive geologic and seismic data sets and you will work with our Senior Geophysicist and Land Manager to generate prospects and promote drilling activity, primarily in the North Louisiana Salt Basin and Gulf Coast regions. In this position, you will also be responsible for the petrophysics and economic modeling associated with prospect generation. This role will require a high degree of proficiency with the preparation of prospect marketing packages, and with presentations to a wide variety of oil and gas companies and conventions. Additionally, you will also manage our royalty production stream, including annual reserve reporting and revenue forecasting. You will also have the responsibility to assess oil and gas potential in a wide variety of geologic terrains, and to support real estate and timberlands divestitures and acquisitions. We expect you to use your strong interpersonal, communication, and conflict resolution skills as you work to create strategic plans and meet financial objectives for your areas of responsibility.

At Weyerhaeuser we believe trees are a remarkable resource that can, and should, be managed responsibly to make a range of products that meet human needs, while also providing recreation, wildlife habitat, and other important ecosystem benefits. For more than a century, we've been building our reputation as a leader in sustainable forest products.

Roles & Responsibilities

- Responsible for prospect petrophysics, decline curve analysis and economic modeling.
- Manages royalty production streams, including reserve reporting and revenue projections.
- Generates oil and gas prospects on Weyerhaeuser lands, along with marketing displays and presentations, in close collaboration with the Senior Geophysicist; utilizing our extensive geophysical and geologic data bases.
- Collaborates with the Oil and Gas Team to identify potential industry partners, and to promote exploration activity.
- Responsible, along with the Oil and Gas Team, for expert prospect presentation and promotion to a wide variety of oil and gas companies, investors, and management.
- Responsible for geologic and economic evaluations of oil and gas lease offers, in partnership with the Senior Geophysicist and Land Manager.
- Responsible for geologic and economic assessment of oil and gas potential on all Weyerhaeuser lands, including recommendations regarding acquisitions and divestitures.
- Collaborates with Operations Team in evaluating performance and compliance with lease contracts
- Partners with the Oil and Gas Team for the creation of annual budgets and strategic plans.
- Responsible for the attainment of annual leasing goals and financial objectives within area of responsibility.
- Displays strong excellent interpersonal, communication and conflict resolution skills.
- Reports to Director, Oil and Gas, Energy and Natural Resources.

Qualifications

Experience: We place an emphasis on our candidate's skills and drive to get the job done. We require demonstrated experience in the upstream oil and gas industry, with an emphasis on prospect generation and marketing, in the North Louisiana Salt and Gulf Coast Basins. A background in petrophysics and petroleum economics are also essential skills for this position.

Education: Bachelor's degree or higher, Master's preferred, in geology or closely related field;

Technical Skills: eight or more years' experience in prospect generation and marketing. Full working knowledge of Petra geologic software, or equivalent, is required. Candidates with expertise in salt tectonics will receive preferential consideration. Experience with petroleum economic software, e.g., PHDWin, for decline curve analysis, economic evaluations, and volume/revenue projections is also required.



AAPG HEDBERG
Hydrocarbon
Microseepage: Recent
Advances, New
Applications, and
Remaining Challenges

18-20 June 2019 • Houston, TX

Abstract Submission Deadline 20 January, 2019

In June 2019 in Houston, we plan to bring together 70-90 international experts to review the state of knowledge of hydrocarbon microseepage.

For more information regarding abstract guidelines and topics visit AAPG website, www.aapg.org and look under Hedberg Research Conferences.



MONTHLY POST

Dr. David T. Dockery III RPG

TORNADO TRACKS IN MISSISSIPPI

David T. Dockery III, RPG, and Barbara Yassin

It might come as a surprise that the center of tornado activity is not Tornado Alley in Kansas but Dixie Alley in Smith County, Mississippi, according to Dixon and others (2011). Figure 1 shows the risk map.

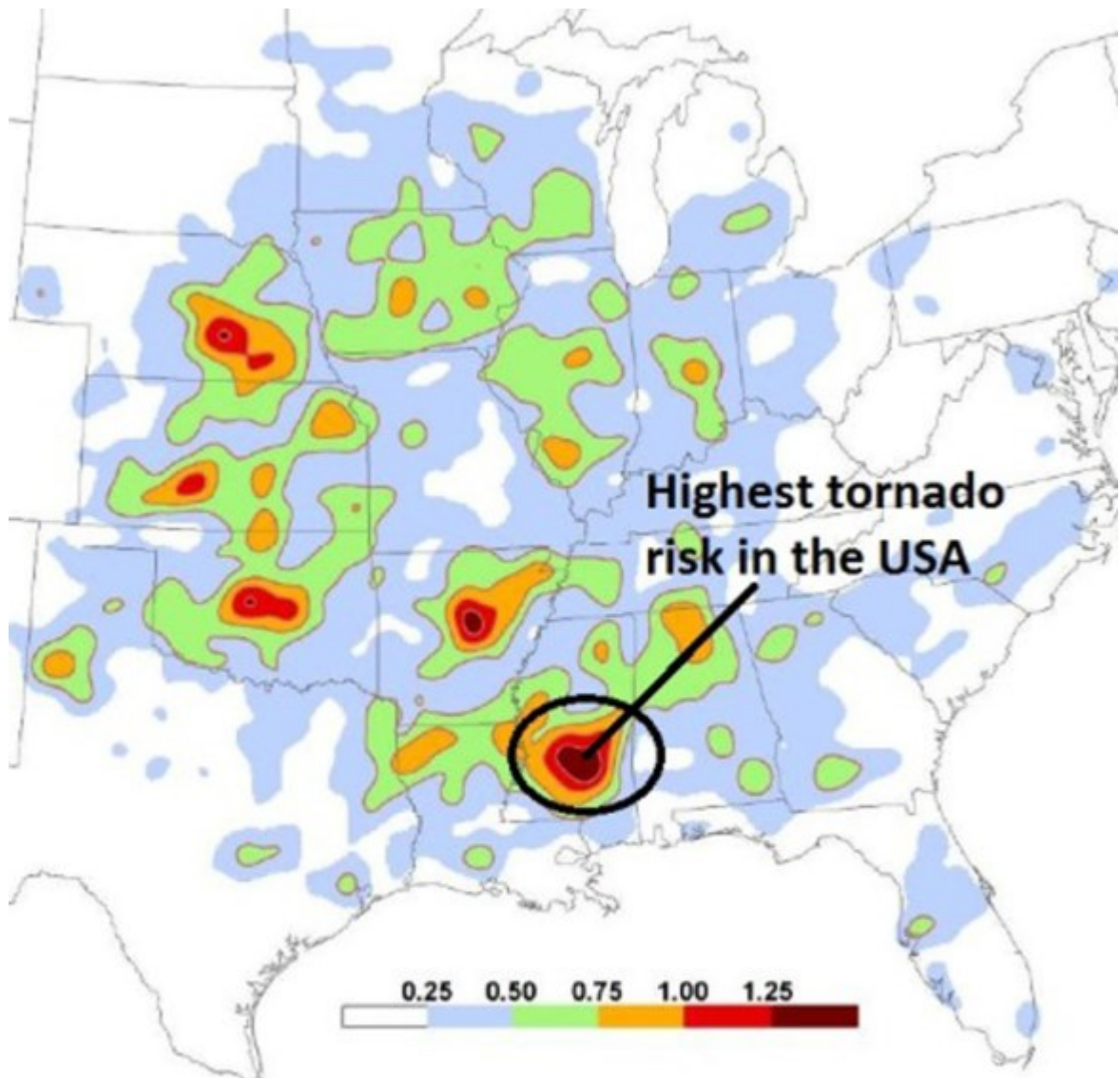


Figure 1. Map is from P. Grandy Dixon and others (2011, American Meteorological Society) research on the probability of tornadoes in the USA. Their shocking findings indicate that Smith County, Mississippi has the highest tornado risk in the nation with an average of 1.4 tornadoes or more per year within in a 25 mile radius.



MONTHLY POST

Dr. David T. Dockery III RPG

Figure 2 shows F2-F5 tornado tracks across central Mississippi from 1880 to the present.

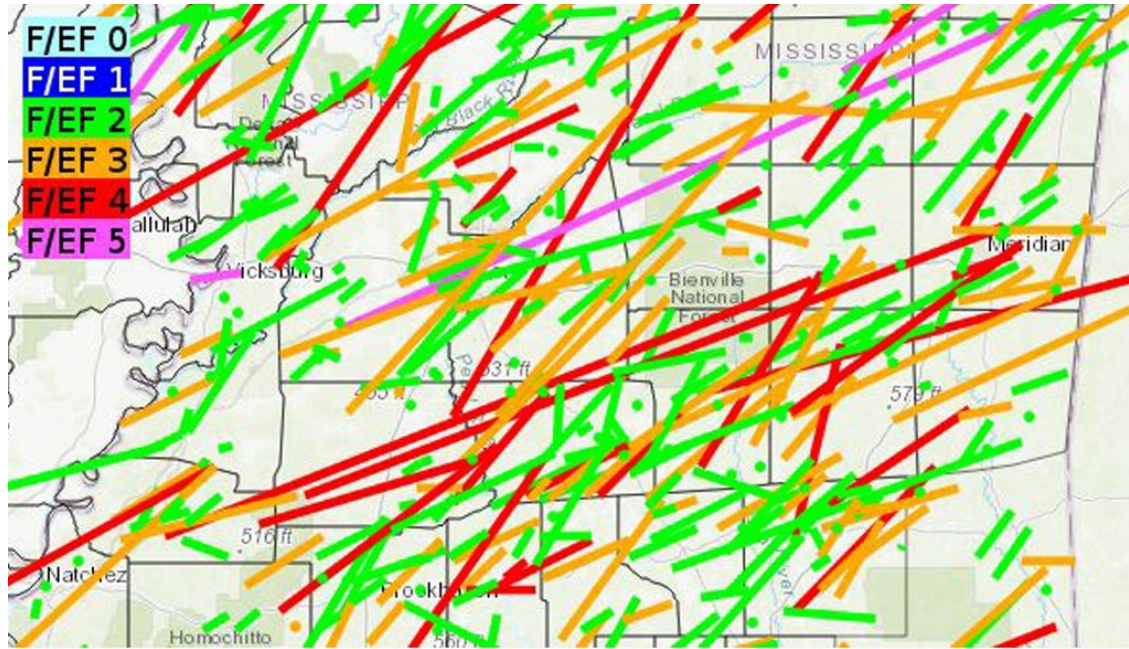


Figure 2. Tracks of F2-F5 tornadoes in central Mississippi from 1880 to present, according to the National Weather Service, Jackson, Mississippi.

Figure 3 locates Tornado Alley and Dixie Alley. A survey of tornado fatalities from 1950 to 1994 by the Storm Prediction Center ranked Mississippi second (386 deaths) behind the much larger state of Texas (475 deaths). Number three in the ranking (Arkansas) had 279 fatalities.

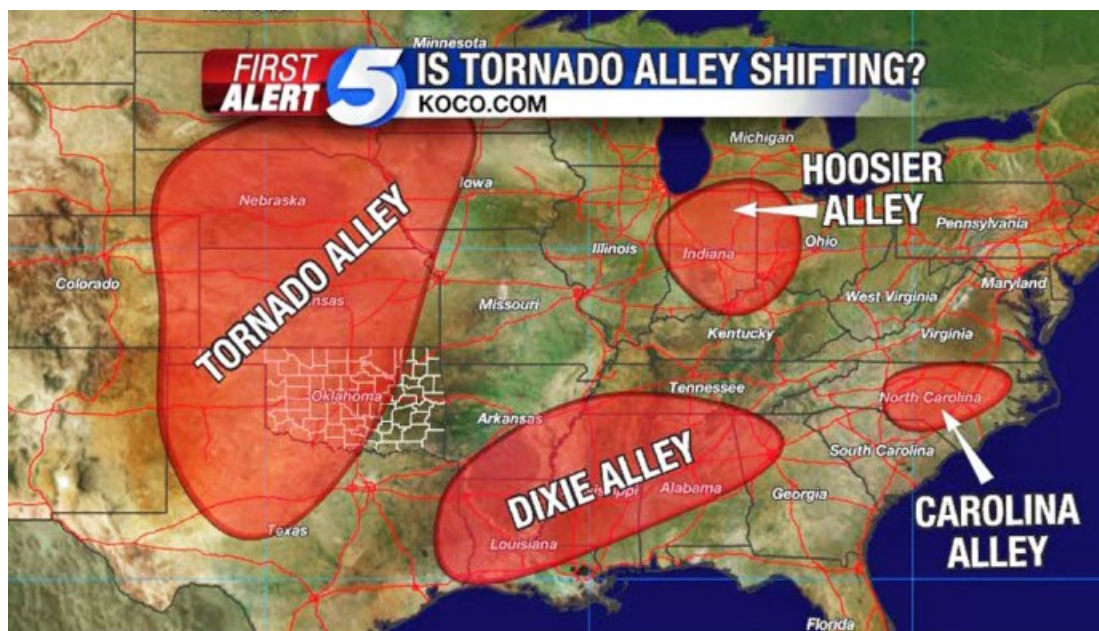


Figure 3. Tornado Alley and Dixie Alley and others.



MONTHLY POST

Dr. David T. Dockery III RPG

One recent deadly storm in Mississippi's Dixie Alley happened on the Saturday morning of April 24, 2010. With a tornado bearing down on Yazoo City, a panicked announcer on Jackson's Weather Radio frantically called for residents to find shelter in a safe place immediately. A wedge tornado was on the ground headed their way! With winds up to 170 miles per hour, the storm killed 10 people and injured 146, making it the state's worst natural disaster since Hurricane Katrina. The tornado was on the ground for nearly 3 hours and left a path 140.25 miles long with a maximum width of 1.75 miles, a record for the state (Figure 4).

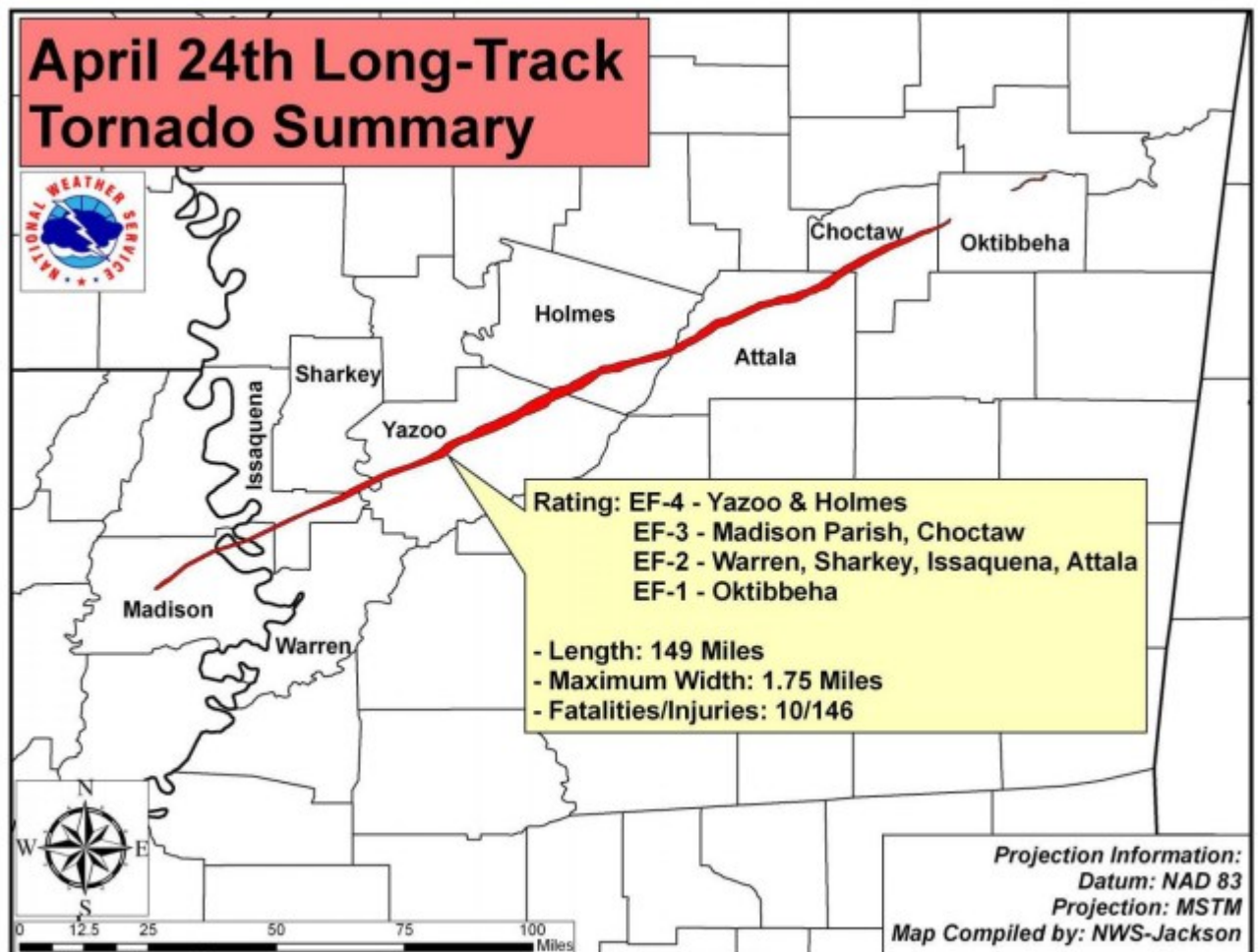


Figure 4. Storm track of the April 24, 2010, Yazoo City tornado.



MONTHLY POST

Dr. David T. Dockery III RPG

Figure 5 shows a flipped and dismantled Yazoo City trailer west of Highway 49 with a splintered tree sticking through the floor.



Figure 5. The floor of a mobile home with a very clean toilet west of Highway 49 in Yazoo City impaled on the splintered trunk of a tree. Pictures were taken on April 25, 2010.

The Canton Tornado of 1821 had a southwest to northeast track as did the 2010 Yazoo City Tornado. If you have not heard of that storm, nether had anyone else. Barbara Yassin clicked on a random 1821 Madison County plat from the Bureau of Land Management Government Land Office Record's historic survey plats and found the plat recorded "A Trace of a Hurricane" with X-like symbols (Figure 6).

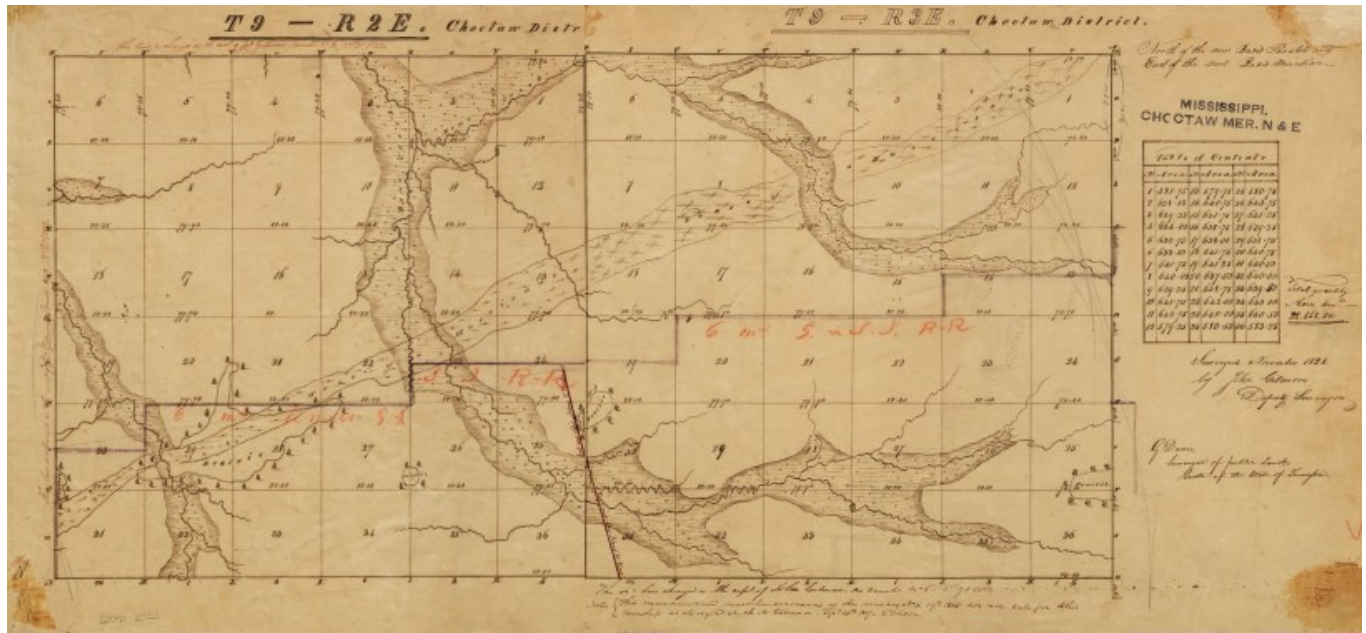


Figure 6. 1821 Madison County two plat composite from the Bureau of Land Management Government Land Office Record's Historic Survey Plats with storm track.



MONTHLY POST

Dr. David T. Dockery III RPG

The track runs through present-day Canton (Figure 7). Barb sent her findings to the Jackson National Weather Service and received the following response.

Daniel Lamb, NWS Jackson, responded:

This is a fascinating discovery! Our best guess it was a tornado path but the surveyor referred to it as 'hurricane' because he didn't know any better. We are very curious to find more information about this damage path. It will be challenging to find more details, as this survey map seems to predate the earliest newspapers in the state of Mississippi.

Thanks so much for sharing with us, and if you ever encounter anything like this again in the future, please pass it along.

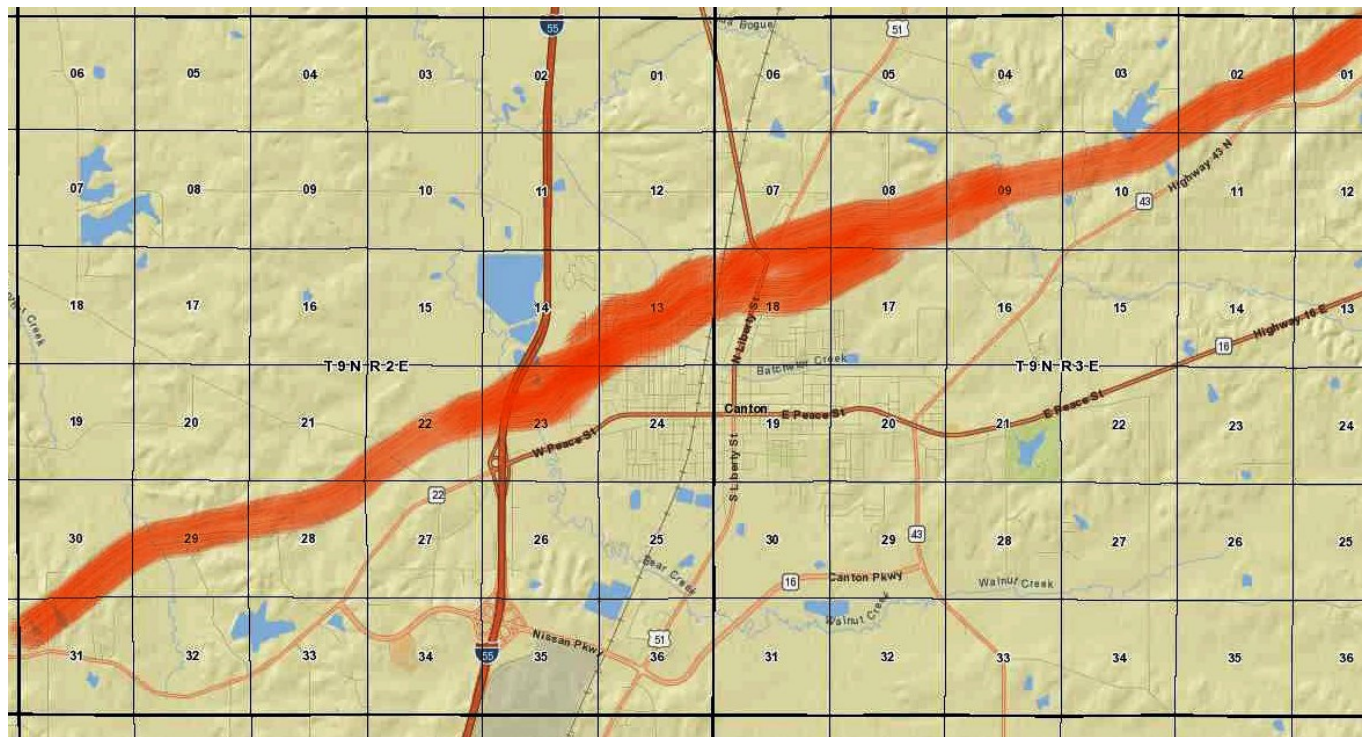


Figure 7. 1821 tornado track overlay on Canton, Mississippi, city streets.



69th Annual Gulf Coast Association of Geological Societies 2019 GCAGS Convention

October 23-25, Marriott Westchase, Houston

Hosted by the Houston Geological Society and the GCSSEPM

General Chair: Mike Erpenbeck, Vice Chair: Larry Bartell, GCAGS President: Deborah Sacrey

Submit an Oral or Poster Abstract by March 4, 2019

Convention Themes

- 1. Unconventional GOM Mudrocks and Shale Plays**
Austin Chalk, Eagle Ford, Haynesville, Eaglebine and other plays
- 2. Onshore GOM Conventional Plays, Discoveries, and Case Studies**
Louisiana and Texas Wilcox, Miocene, Yegua, and other trends
- 3. Offshore GOM Exploration and Production Studies**
Cretaceous, Miocene, Deepwater Wilcox Plays, Risking, and Dry Hole Evaluation
- 4. Over the Border: Mexico Geology and Exploration, and Caribbean Exploration**
Mexico, Cuba, Belize, Trinidad, Offshore Central America, Regional Studies
- 5. Structural Geology, Gravity, and Magnetic Case Studies**
Ground Penetrating Radar Imaging, Use of Drones, and Lidar Imaging
- 6. Gulf Coast Environmental Geology**
Subsidence & Flooding Impact, Groundwater Quality, Public Education Outreach, Environmental Studies, and Professional Licensing
- 7. Petroleum Engineers and Geologists Working Together for a Better Answer**
Estimating Reserves, GeoModeling, Economics, Waterflooding, and Permeability Enhancement
- 8. Seismic Technology and Salt Tectonics**
Depth Migration, Subsalt Processing, AVO, Seismic Attributes, and Shallow Hazards
- 9. Understanding Big Data and Computer Aided Interpretation**
Machine Learning, Visualization, Augmented Intelligence, and Pattern Recognition
- 10. The Road to Business Success**
Deals, Financing, Starting Own Company, Young Professional Careers, and Consulting

2019 Convention Oral and Poster abstracts of up to 300 words must be submitted to the Technical Chair, Linda Sternbach, by March 4, 2019.

Send abstract and contact info in a Word document to linda.sternbach@gcagshouston.com.

Authors will receive notification of acceptance by March 25, 2019

If you'd like to publish in the *GCAGS Journal*, the peer-reviewed journal of Gulf Coast geoscience, submit an extended abstract of at least 600 words, including 1-2 representative figures, to the *GCAGS Journal* Editor, Robert Merrill (rmerrill@catheart.com) by December 15, 2018.

www.gcagshouston.com



BOLAND SCHOLARSHIP WATCH

Faculty & Students,

This is a new year and the Mississippi Geological Society along with the Boland Scholarship Fund would like to remind you that we want to honor the most outstanding overall students for the 2018-2019 year.

Each year, the Boland Scholarship awards 1 student from each institution a check that rewards students for their hard work and dedication to the Geosciences and their community.

We look forward to a great year and hope to see you at our monthly meetings.

Best Regards,

Matt Caton
Editor



THE UNIVERSITY OF
SOUTHERN
MISSISSIPPI

MILLSAPS
COLLEGE



GEOLOGY POST

ARTICLES, PAPERS or NEWS?

ATTENTION!!!!!! Industry, Professors and Students:

I am adding a dedicated section that includes more content from the industry and our schools.

Submissions can include anything from professional papers, thesis abstracts, job opportunities to pictures. Anything!!!!

If you have any information or news you would like to share with the Society **PLEASE** email them to the MGS Editor at:

mcaton@tellusoperating.com

Thanks & Regards,

Matt Caton
Editor

GEO LINK POST

USGS TAPESTRY OF TIME AND TERRAIN <http://tapestry.usgs.gov> The CCGS is donating to all of the 5th and 6th grade schools in the Coastal Bend. Check it out—it is a spectacular map. You might want a framed one for your own office. The one in my office has glass and a metal frame, and it cost \$400 and it does not look as good as the ones we are giving to the schools. Call Owen 510-6224 if you want one for your office for \$150. Duncan, Mike, Chris, Dave, Bob Randy, Seb., Kevin, Ken, Craig, Patrick, Robert.

FREE TEXAS TOPO'S <http://www.tnris.state.tx.us/digital.htm> these are TIFF files from your state government that can be downloaded and printed. You can add them to SMT by converting them first in Globalmapper. Other digital data as well.

FREE NATIONAL TOPO'S [http://store.usgs.gov/b2c_usgs/b2c/start/\(xcm=r3standardpitrex_prd\)/.do](http://store.usgs.gov/b2c_usgs/b2c/start/(xcm=r3standardpitrex_prd)/.do) go to this webpage and look on the extreme right side to the box titled TOPO MAPS DOWNLOAD TOPO MAPS FREE.

<http://www.geographynetwork.com/> Go here and try their top 5 map services. My favorite is 'USGS Elevation Date.' Zoom in on your favorite places and see great shaded relief images. One of my favorites is the Great Sand Dunes National Park in south central Colorado. Nice Dunes.

<http://antwrp.gsfc.nasa.gov/apod/astropix.html> Astronomy picture of the day — awesome. I click this page everyday.

<http://www.spacimaging.com/gallery/ioweek/iow.htm> Amazing satellite images. Check out the gallery.

<http://www.ngdc.noaa.gov/seg/topo/globegal.shtml> More great maps to share with kids and students.

www.geo.org Don't forget we have our own web page.

<http://micro.magneet.fsu.edu/primer/java/scienceoptiscu/owersof10/>

<http://asterweb.jpl.nasa.gov/galery/default.htm> Great satellite images of volcanoes

<http://terra.nasa.gov/gallery/> More here

www.ermapper.com They have a great free downloadable viewer for TIFF and other graphic files called ER Viewer.

www.drillinginfo.com This is an incredible (subscription) well and completion data service for independents. Can be demo'ed for free.

<http://terraserver.com/> Go here to download free aerial photo images that can be plotted under your digital land and well data. Images down to 1 meter resolution, searchable by Lat Long coordinate. Useful for resolving well location questions.

<http://www.fs.fed.us/gpnl/volcanocams/msh/> This is a live cam of Mt. St. Helens refreshed every 5 minutes. At the bottom are old videos of past eruptions in this cycle. It is worth a watch especially now.



MGS HONORARY MEMBERS

Esther Applin*

Verne Culbertson *

David C. Harrell*

Dudley J. Hughes*

Walter P. Jones*

Winnie McGlammery*

Maurice E. Miesse*

Marvin E. Norman*

Thurston Connell Rader*

Henry Toler*

Charles H. Williams

David Cate

Bob Schneeflock

Paul Applin*

H. Leroy Francis*

Oleta R. Harrell*

Urban B. Hughes*

Harold Karges*

Thomas McGlothin*

Emil Monsour*

Marvin L. Oxley*

Baxter Smith*

H. Vaughn Watkins

Jerry Zoble

Stanley King

Lawrence F. Boland*

Jim Furrh*

Ralph Hines*

Wendell B. Johnson *

Wilbur H. Knight*

Frederic F. Mellen*

William H. Moore*

Richard R. Priddy*

Harry V. Spooner

Stewart W. Welch*

Julius Ridgeway

Dr. David T. Dockery III

*** deceased**

MEMBERSHIP APPLICATION / RENEWAL FORM

MISSISSIPPI GEOLOGICAL SOCIETY

P.O. BOX 422, JACKSON, MISSISSIPPI 39205-0422

2018-2019

Membership year is June through May

New Membership (\$20/yr)_____ Renewal (\$20/yr)_____ Student (FREE)_____ Associate (\$20/yr)_____

Boland Scholarship Fund Donation \$ _____ Total Amount Enclosed \$ _____

Last Name: _____ First: _____ MI: _____

Mailing Address: _____

Office Phone: _____ Home Phone: _____ FAX: _____

E-mail Address: _____

College/University Attended: _____

Degree(s) Obtained and Year(s) Awarded: _____

Professional Associations, Certifications, & Licenses: _____

MGS ADVERTISING ORDER FORM

September 2018 – May 2019

I. Bulletin Advertisements:

<u>Size</u>	<u>Rate/Year</u>	<u>Amt. Remitted</u>
Full Page Ad (6" x 8")	\$500	\$ _____
1/2 Page Ad (6" x 4")	\$300	\$ _____
1/4 Page Ad (3" x 4")	\$200	\$ _____
Business Card Ad (1 1/2" x 3")	\$100	\$ _____
Professional Listing (1/2" x 3")	\$ 50	\$ _____

II. Web Page Advertisements (www.missgeo.com):

<u>Type of Web Page Ad</u>	<u>Rate/Year</u>	<u>Amt. Remitted</u>
Front Page Sponsor (Banner Ad – limit of 5)	\$500	\$ _____
Second Page Banner Ad	\$250	\$ _____
Professional Listing/Link	\$100	\$ _____

(Note: Please contact Steve Walkinshaw at (601) 607-3227 or mail@visionexploration.com for details concerning placing your ad on the MGS web site.)

Total Remitted \$ _____

Please make checks payable to the Mississippi Geological Society. If you have any questions, contact Matt Caton at (601) 898-7444 or mcaton@tellusoperating.com

MILBIRD RESOURCES, LLC

Oil & Gas Exploration

Maurice N. Birdwell

Managing Partner

AAPG Certified Petroleum Geologist

Reg. Prof. Geol. Ark. La. Miss. Tex

2043 Oak Ridge Drive
Pearl, MS 39208

601.936.6939
mnbirdwell@comcast.net

BRUNINI

WATT'S C. UELTSCHHEY
ATTORNEY

OFFICE (601) 960.6871 FAX (601) 960.6902

E-MAIL WATTS@BRUNINI.COM | WWW.BRUNINI.COM

BRUNINI, GRANTHAM, GROWER, & HEWES, PLLC
ATTORNEYS AT LAW

190 EAST CAPITOL STREET SUITE 100 JACKSON, MS 39201
P.O. DRAWER 119 JACKSON, MS 39205

Joseph H. McDuff
Geologist



351 Chapel Loop
Mandeville, LA 70471
985.845.9430

jhmcduff@charter.net

VALIOSO
PETROLEUM CO., INC.

KARL J KAUFMANN

504 KEYWOOD CIRCLE
SUITE C
FLOWOOD, MS 39232

PHONE: 601-936-3601
CELL: 601-209-0948
valioso@bellsouth.net



MGS PAST PRESIDENTS

1939-1940	Henry N. Toler	1973-1974	Larry Walter
1940-1941	Urban B. Hughes	1974-1975	W. E. "Gene" Taylor
1941-1942	J. Tom McGlothlin	1975-1976	Jerry E. Zoble
1942-1943	Dave C. Harrell	1976-1977	P. David Cate
1943-1944	K. K. "Bob" Spooner	1977-1978	Sarah Childress
1944-1945	L. R. McFarland	1978-1979	Les Aultman
1945-1946	J. B. Story	1979-1980	Philip R. Reeves
1946-1947	Frederic F. Mellen	1980-1981	Marshall Kern
1947-1948	H. Lee Spyres	1981-1982	Stephen Oivanki
	Robert D. Sprague	1982- 1983	James W. "Buddy" Twiner
1948-1949	Robert D. Sprague	1983- 1984	Charles H. Williams
1949-1950	E. T. "'Mike" Monsour	1984- 1985	C. Kip Ferns
1950-1951	J. Tate Clark	1985-1986	Steven S. Walkinshaw
	Charles E. Buck	1986-1987	J. R. "'Bob" White
1951-1952	George W. Field	1987-1988	Harry Spooner
1952-1953	James L. Md11in, Jr.	1988-1989	Stanley King
1953-1954	Wilbur H. Knight	1989-1990	Stan Galicki
1954-1955	A. Ed Blanton	1990-1991	E. James Files, Jr.
1955-1956	Gilbert A. Talley	1991-1992	Stephen L. Ingram, Sr.
1956-1957	Ben Ploch	1992-1993	Michael Noone/Stanley King
1957-1958	Emil Monsour	1993-1994	Brian Sims
1958-1959	Charles Brown	1994-1995	C. W. "Neil" Barnes
1959-1960	M. F. Kirby	1995-1996	Lester Aultman
1960-1961	Rudy Ewing	1996-1997	Jack S. Moody
1961-1962	Xavier M. Franscogna	1997-1998	George B. Vockroth
1962-1963	Robert B. Ross	1998-1999	Rick L. Ericksen
1963-1964	William A. Skees	1999-2000	Stanley King
	Marvin Oxley	2000-2001	John C. Marble
1964-1965	James F. Bollman	2001-2002	Andrew T. Sylte
1965-1966	Sankey L. Blanton	2002-2003	Aaron Lasker
1966-1967	Alan Jackson	2003-2004	John G. Cox
1967-1968	Julius M. Ridgway	2004-2005	James E. Starnes
1968-1969	Edward D. Minihan	2005-2006	Todd Hines
1969-1970	Kevin E. Cahill	2006-2007	Bob Schneeflock
1970-1971	John Lancaster	2007-2008	Tony Stuart
1971-1972	Larry Boland	2008-2009	Lisa Ivshin
1972-1973	Charles Barton	2009-2010	Joe Johnson
		2010-2011	Brian Sims
		2011-2012	Stanley King
		2012-2013	Jim Files
		2013-2014	Neil Barnes
		2014-2015	Ezat Heydari
		2015-2016	Jack Moody
		2016-2017	Cragin Knox
		2017-2018	David Hancock