

MISSISSIPPI GEOLOGICAL SOCIETY
eBULLETIN

Volume 64

No. 5

January 2016



JANUARY SPEAKER

Lawrence R. Baria
Relatively Large Mid-Ramp,
Highstand, Microbialite Patch and
Fringing Reefs, A New Exploration Play
for South Alabama

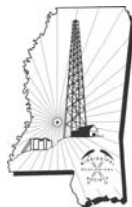
PAST & PRESENT PROSPECTS

DARBUN PROSPECT: WALTHALL CO. MS
Dave Cate

MISSISSIPPI MADE

Dr. David T. Dockery III, RPG

MS/AL DRILLING ACTIVITY



www.missgeo.com



MGS 2015-2016 BOARD OF DIRECTORS

Officers

| | | | | |
|---------------------------|------------------|--------------------|--|----------------|
| President | Jack Moody | Independent | jsmpoststate@gmail.com | (601) 942-5025 |
| 1st Vice President | Craigin Knox | Waggoner | Cragin.knox@waggonereng.com | (601) 355-9526 |
| 2nd Vice President | Joe Johnson | Spooner Petroleum | jjohnson@spoonercompanies.com | (601) 898-7444 |
| Treasurer | Bill Bagnall | BLM | wbagnall@blm.gov | (601)-977-5417 |
| Webmaster | Steve Walkinshaw | Vision Exploration | steve@visionexploration.com | (601) 607-3227 |
| Advertising | Matt Caton | Tellus Operating | mcaton@tellusoperating.com | (601) 898-7444 |
| Editor | Matt Caton | Tellus Operating | mcaton@tellusoperating.com | (601) 898-7444 |

Boland Scholarship

| | | | | |
|------------------|-----------------|-----------------------|--|----------------|
| President | Jack Moody | Independent | | |
| Secretary | Dave Cate | Pruet Oil | | (601) 948-5279 |
| Members | Neil Barnes | Independent | | |
| | Tony Stuart | Venture Oil & Gas | | (601) 428-7725 |
| | James Starnes | DEQ | | |
| | Bob Schneeflock | Geodigital Consulting | | (601) 853-0701 |

Honorary Membership

| | | | | |
|-----------------|--|-------------|--|----------------|
| Chairman | Charles H. Williams, Jr. Vaughey & Vaughey | | | (601) 982-1212 |
| Members | E. Ralph Hines | Moon-Hines | | (601) 572-8300 |
| | Jerry Zoble | Independent | | |

MGS Representatives

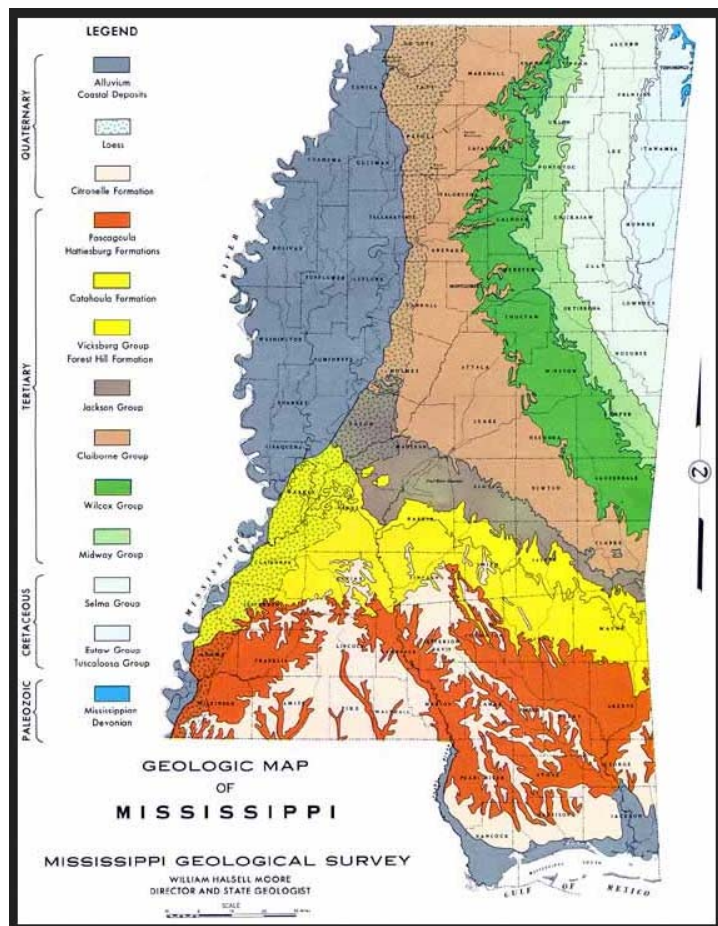
| | | | |
|--------------|------------------|-------------------|----------------|
| AAPG | Maurice Birdwell | Milbird Resources | (601) 936-6939 |
| GCAGS | Danny Harrelson | U.S. Army R&D | (601) 634-2685 |

Other

| | | | |
|----------------------|--------------|-------------|----------------|
| Environmental | John Ryan | Allen | (601) 936-4440 |
| Historian | Stanley King | Independent | (601) 842-3539 |

2015-2016 MGS MEETING SCHEDULE

| When | What/Who | Where |
|-------------------------|--|------------------------------|
| September 10, 2015 | Fall BBQ | Jackson Yacht Club-5:30pm |
| October 8, 2015 | Todd Keifer Energy & Power in MS | River Hills – 11:30am |
| November 12, 2015 | Danny Harrelson Canals & River Cutoffs as a tactic during Vicksburg Campaign of American Civil War | River Hills – 11:30am |
| December 2015 | MAPL Christmas Party—CANCELLED | |
| January 14, 2016 | Lawrence R. Baria Relatively Large Mid-Ramp, Highstand, Microbialite Patch and Fringing Reefs, A New Exploration Play for South Alabama | River Hills – 11:30am |
| February 11, 2016 | TBD | River Hills – 11:30am |
| March 10, 2016 | TBD | River Hills – 11:30am |
| April 7, 2016 | Boland Scholarship Awards | River Hills – 11:30am |
| May 12, 2016 | Spring Fling | Jackson Yacht Club– 5:30pm |



OFFICERS MEETINGS

| |
|------------------------|
| September 8, 2015 |
| October 6, 2015 |
| November 10, 2015 |
| January 5, 2016 |
| February 9, 2016 |
| March 8, 2016 |
| April 5, 2016 |
| May 10, 2016 |



PRESIDENT'S LETTER

Jack Moody



A new year has arrived, yesterday is in the rear view mirror. All of us in the oil business are learning or re-learning the art of slimming down, getting lean for the long haul. There are good reasons to take a little hope that the market has already taken the big up-front hit. Now perhaps the early adopters in the industry will go to work in the world of \$35-\$40 oil. Investors know how to evaluate the economics of deals at any product price. The service industries are getting their costs down in line with the product prices. Now we can hope to tailor our exploration efforts in areas and plays where the new numbers work. Investors have some reason to believe the worst is behind us so now is the time to come out of their shells. I have it on good authority that drilling deals are being sold. In addition, just today I was talking with a local geologist that has four wells about to be drilled. These positive bits of news make me want to look at the New Year as one of opportunity. I am grateful that I'm able to be in an industry I enjoy so much.

MGS is not all oil and gas geologists so some of our members are avoiding the current meltdown. A recent conversation with people in the engineering/environmental side of geology sounded like business was pretty good for those folks. I was glad to hear that report. All those in the educational business are back from the big holiday/semester break and it is off to the races stimulating all those young minds. A good teaching situation is hard to beat for job satisfaction.

Larry Baria will help MGS start the year off as the luncheon speaker at the January 7 meeting. His presentations are always entertaining and informative so give yourself a treat and come join us.

Wishing everyone a happy, healthy, and prosperous 2016.

Jack Moody



IMPERIAL BARREL AWARD

Open Registration

ATTENTION!

Dear GCAGS Society Presidents,

Please pass the below information on to your society's members via your website, bulletin, newsletter, e-mail blast or whatever method is best for your society.

Registration for the **2016 Imperial Barrel Award** is now open. Encourage the graduate schools in your area to participate. Please visit the **new website** at <http://iba.aapg.org/program> to find out more about this prestigious competition for geoscience graduate departments.

If you would like to **sponsor the competition** please visit <http://iba.aapg.org/sponsorship> (be sure to **designate your contribution to the Gulf Coast Section**) or contact Tom Bulling or Janice Gregory-Sloan for more information (bullintp@bp.com or jgregorysloan@gmail.com)

Regards,

Kate Kipper
[512-925-1200](tel:512-925-1200)



JANUARY SPEAKER

Lawrence R. Baria

Relatively Large Mid-Ramp, Highstand, Microbialite Patch and Fringing Reefs, A New Exploration Play for South Alabama

Lawrence R. Baria¹, Ezat Hedari²

¹Jura-Search, Inc., 546 Keyway Drive, Suite C, Flowood, MS 39232, bearlear@bellsouth.net

²Department of Physics, Atmospheric Science and Geoscience, Jackson State University
P. O. Box 17660, Jackson, MS 39217, ezat.heydari@jsums.edu

ABSTRACT

Lower and middle Smackover microbialite build-ups are providing 100' to 200' thick porous oil reservoirs along localized flexures and paleo-bathymetric highs in a mid-ramp, upper Jurassic setting. Recent drilling and 3-D seismic acquisition in Covington, Conecuh and Escambia Counties, Alabama, has delineated a trend of excellent producing wells (400 to 1300 BOPD) developed across the mouth of the Conecuh Embayment. In this setting greater Smackover thicknesses probably attest to increased water depths and greater accommodation space which allowed significant vertical reef build-ups in a less restrictive and possibly better environment of marine circulation than those inboard and within the embayment. Cumulative primary production from these reefs could lie on the order of one to three million barrels per well. This trend occurs basin-ward of the prolific Little Cedar Creek and Brooklyn Fields which were established over the last several years. The latest discoveries appear to represent stacked, multi-cycle bioherms developed throughout the lower and middle (Smackover C & B) highstand sequences.

These recently discovered massive microbialite colonies consist of a variety of cyanobacterial growth patterns including: laminated crusts, digitate columns, crenulate clusters, and a pelleted, clotted fabric. Occasional epifaunal foraminifera, gastropods, thin shelled pelecypods, sponges, echinoid spines, red algae and serpulid worms are observed encrusting and providing internal sediment to the reefal build-ups. Core descriptions attest to two stages of reef development with a significant lowstand exposure between and above both transgressions. Petrophysical properties of 2-5 darcies and 20% porosity are not uncommon in the mid-ramp reservoirs. Early cementation of the reef framework allowed the development of syndepositional and early burial fracturing to occur which further enhanced reservoir continuity and fluid flow characteristics.

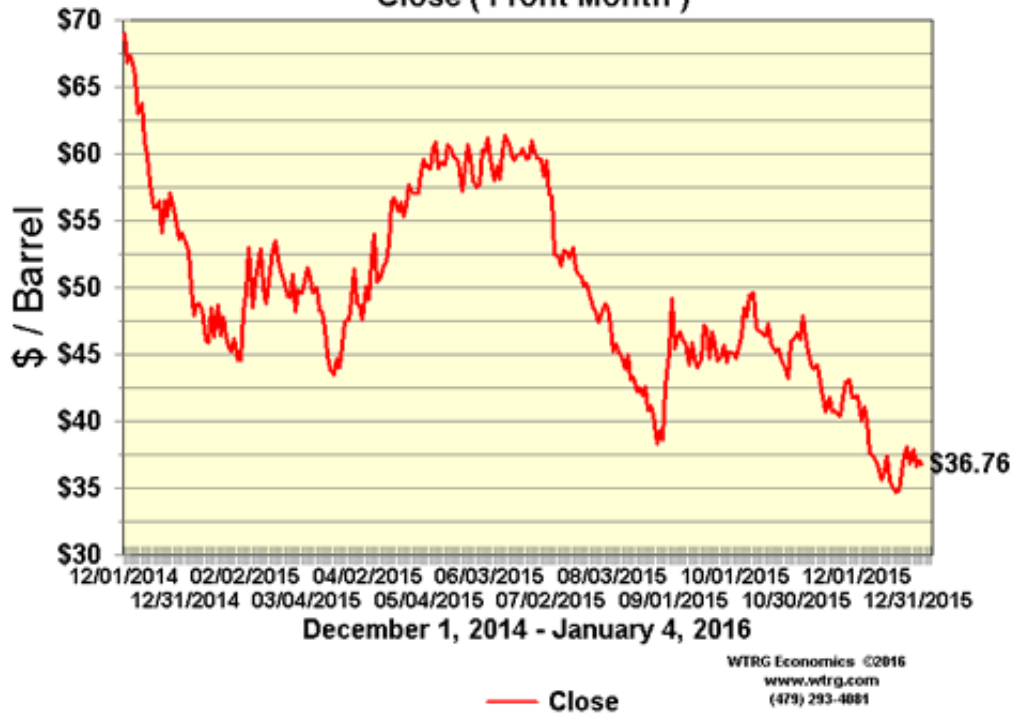
Lawrence R. Baria

After receiving a BS and MS degree from Northeast Louisiana University, where he studied stratigraphy and sandstone petrology, Baria attended LSU to work on PhD studies stratigraphy, carbonate and sulfate diagenesis. Early in his career he worked with Getty Oil Company's E&P Research Lab, specializing in Cretaceous and Jurassic stratigraphy, worldwide. Since 1980 he has been a consulting and exploration geologist active in the Central and Eastern Gulf Coast and the Middle East working primarily in the Smackover and other Mesozoic carbonates. His interests revolve around the relation between sedimentary petrology, the recognition of depositional environments and the interpretation of seismic stratigraphy as applied to oil and gas exploration.

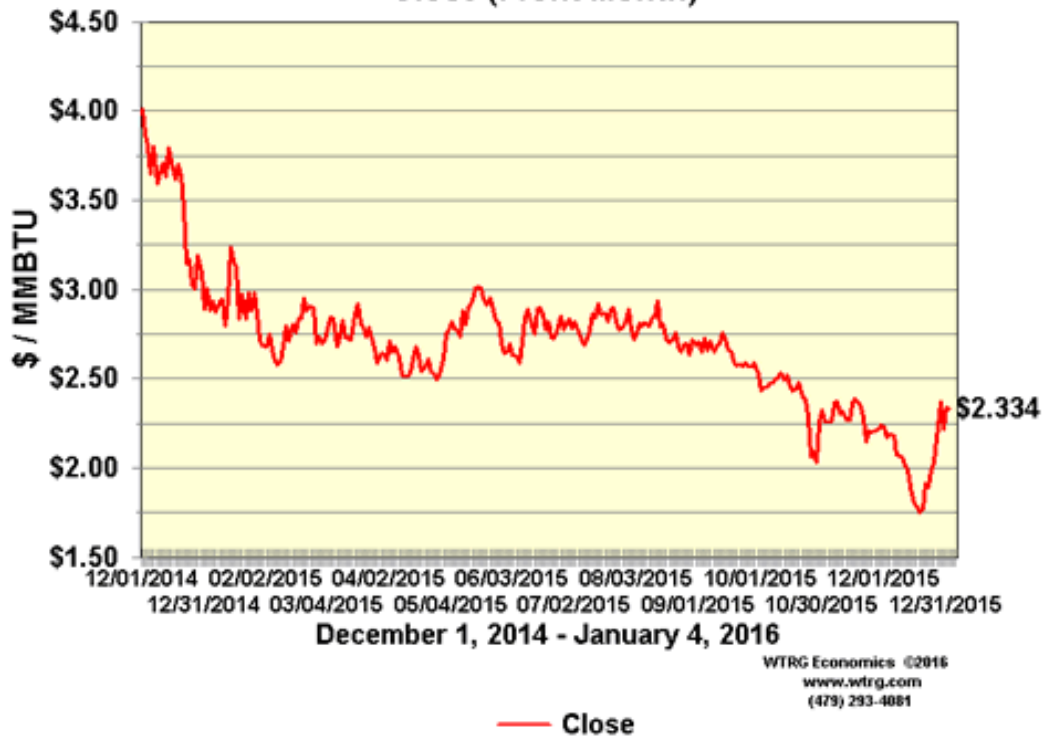


CURRENT PRICES

**NYMEX Crude Oil Futures
Close (Front Month)**



**NYMEX Natural Gas Futures
Close (Front Month)**





PAST & PRESENT PROSPECTS

The Darbun Prospect

THE DARBUN PROSPECT WALTHALL COUNTY, MISSISSIPPI

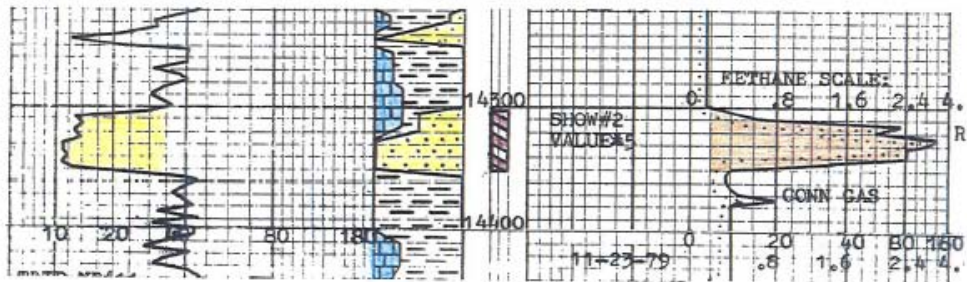
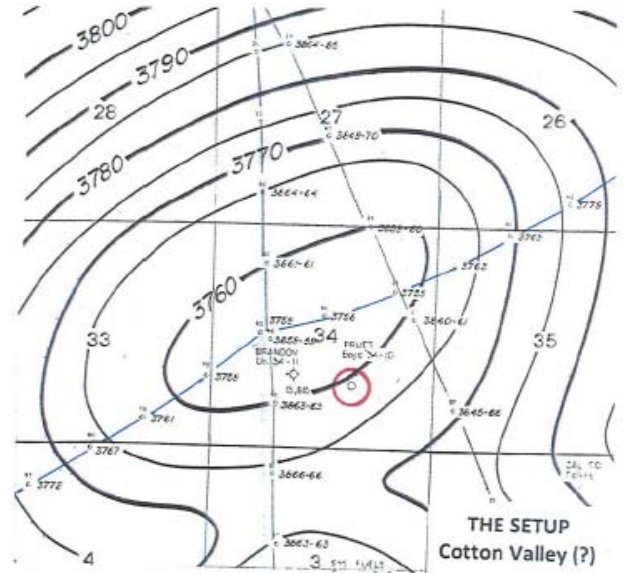
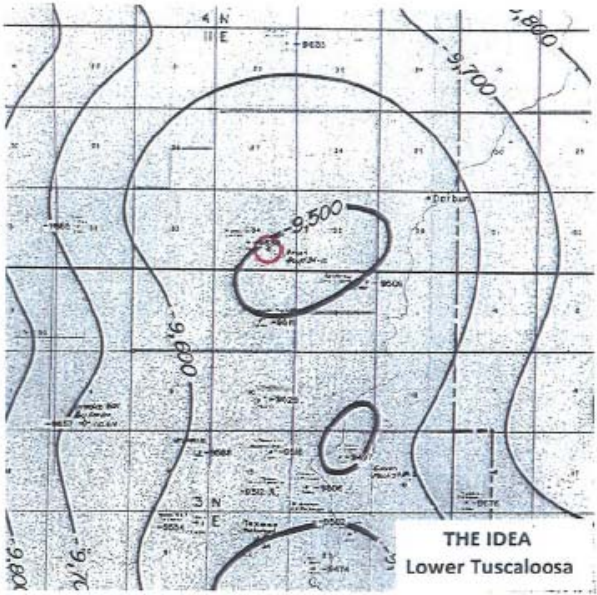
In early 1979, Pruet Oil Company acquired two NNW-SSE 2D seismic lines of fair quality to help evaluate the Darbun Prospect, a subtle four-way closure mapped on the Lower Tuscaloosa Formation by Jim Smith. This was during the height of the Hosston gas play in South Mississippi and the Hosston was the ultimate goal along with possible deep Cotton Valley gas reserves. Dick Lee was contracted to interpret the initial data and did so by mapping rollover at Ferry Lake and Cotton Valley levels with thinning between the two events, a key element in defining viable Hosston prospects. Pruet then shot a five mile NE-SW 2D seismic line and firmed up the interpretation as simple anticlinal four-way closure on the Cotton Valley event and strong nosing with slight closure on the Ferry Lake event. Pruet and its partners considered that to be enough to justify the drilling of a deep Hosston-Cotton Valley wildcat test and thus assembled a prospect block of leased and sub-leased acreage for the drilling of the No. 1 Boyd 34-10 well, which was subsequently drilled to a total depth of 17,924' in the Cotton Valley Formation on October 17, 1980. No intervals proved to be of interest in either the Hosston or Cotton Valley by final e-log and sidewall core evaluations. On the way down, however, a methane gas show rated as low value and probably non-productive by mud log nomenclature was penetrated in a thick Mooringsport sandstone that was not a pre-drill objective. This sand, now named the Boyd Sand, proved to have 36 feet of gas pay full to base and was completed FARO of 3,000 MCFGD from perforations at 14,330'-14,364' on a 15/64" choke with a FTP of 4,700 psi. Cumulative production to date is 22.7 BCFG and still going. Pruet followed this discovery with the drilling of four offset Mooringsport tests to the east, south and west but all were dry holes and none found any trace of the elusive Boyd Sand. Subsequent interpretations indicated the Mooringsport trap was formed by sand pinch out across the north plunging nosing from the Knoxo-Kokomo-Darbun structural complex. Now, some will say "better lucky than good" but others will say being in the right play at the right time with a viable idea and the intestinal fortitude to take the high risk and drill a deep structure with minimal seismic coverage often leads to unexpected but lucrative results. What say you?

Dave Cate - Pruet Oil Company LLC

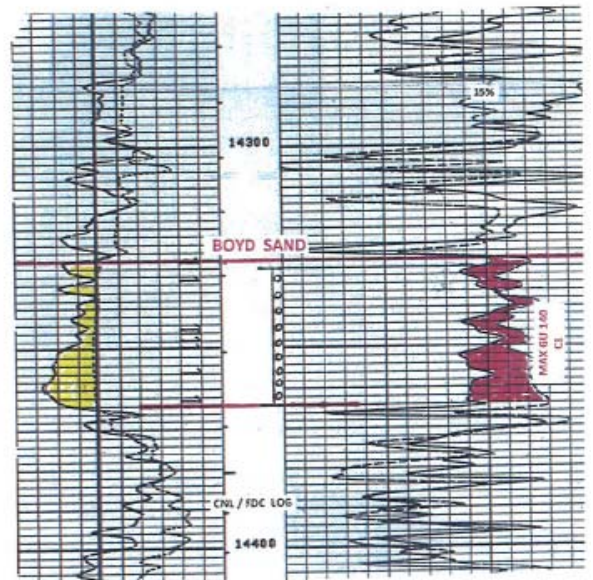
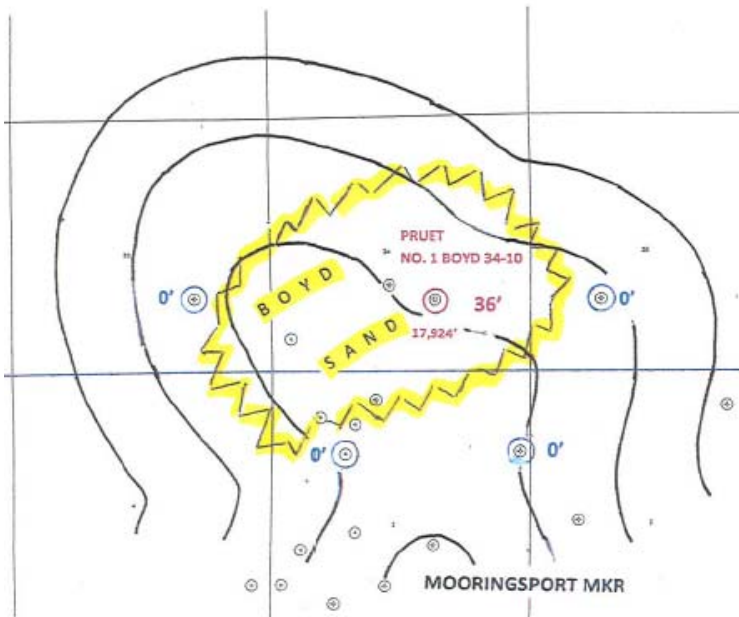


PAST & PRESENT PROSPECTS

The Darbun Prospect



THE RESULT - NORTH DARBUN FIELD



The Geology of Mississippi

David T. Dockery III and David E. Thompson
Foreword by Governor Phil Bryant

The Geology of Mississippi is an encyclopedic work by authors with extensive experience in Mississippi's surface geology mapping program. It brings together published work, unpublished work from agency files, and the authors' experience, both in personal field work and in collaboration with experts from around the world.

With over a thousand images, the voluminous text relates ways in which Mississippi's geology has contributed to the understanding of global events, such as the extinction of the dinosaurs and the first occurrence of tiny primates. Fossil illustrations include Devonian trilobites, Mississippian scale trees, Pennsylvanian brachiopods, Cretaceous dinosaur bones, Paleocene lignite and petrified wood, Eocene seashells and the excavation of fossil whales, Oligocene marine fossils and rare land mammal finds, Miocene plants and animals, Paleozoic marine fossils, and the bones of giant ice-age mammals. The text is arranged by geologic age.

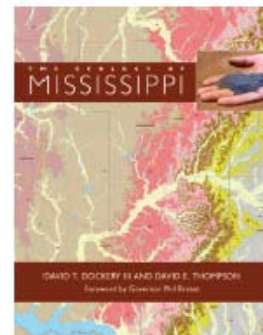
Economic minerals cited in the book include oil and gas (both methane and carbon dioxide), lignite, dimension stone, crushed stone, sand and gravel, various clay deposits, limestone, and potential economic deposits of bauxite, heavy minerals, and iron ore. Groundwater is Mississippi's most valuable natural resource and supplies over 90 percent of the state's public and industrial water supply and most of the state's irrigation supply for agriculture and catfish ponds. Mississippi's surface geology causes the state's fertile and not-so-fertile soil types responsible for foundation and infrastructure substrates that range from stable to failure-prone due to expansive clays. Finally, *The Geology of Mississippi*, coupled with site-specific surface geologic maps, provides information for the wise use of land and the environmental protection of the state's resources.

David T. Dockery III, Clinton, Mississippi, is a registered professional geologist and the Surface Geology Division Director for the Mississippi Department of Environmental Quality. His work has appeared in *Mississippi Geology*, *Palaios: Nature, Paläontologie*, and *Compass*, among others. **David E. Thompson**, Jackson, Mississippi, is a registered professional geologist and supervising geologist in the Surface Geology Division at the Mississippi Department of Environmental Quality. His work has appeared in *Geological Society of America*, *Journal of the Mississippi Academy of Sciences*, and *Mississippi Geology*, among others.

FEBRUARY, 692 pages (approx.), 8½ x 11 inches, 1099 b&w/color illustrations, introduction, foreword, bibliography, index
Printed casebinding **\$80.005** 978-1-4968-0313-9

Ebook available

Copublished with the Mississippi Department of Environmental Quality



The first comprehensive treatment of the state's fascinating geological history

Ebooks: Electronic versions of UPM books are available from Amazon Kindle, Barnes & Noble's Nook, Baker & Taylor's Blio, Copia, EBSCO/NetLibrary, EBL/Ebooks Corporation/ProQuest, Ebrary, Follett Digital Editions, Google Editions, Ingram Digital and MyiLibrary, JSTOR, KNO Inc., Kobo, Overdrive, Project Muse, SONY Reader, and Oxford UPSO. SharedBook and University Readers also carry UPM's content.

Order Information:

Sales tax:
Add 7% state sales tax for orders in Mississippi.

Shipping & handling:
Add \$5.00 for first book, \$2.00 for each additional book.
Outside USA: \$10.00 for first book, \$10.00 each additional book.

To receive a catalog of other University Press of Mississippi books
Call: 1-800-737-7788,
fax: (601) 432-6217,
or e-mail:
press@hl.state.ms.us

The Geology of Mississippi

Qty. printed casebinding _____ Price Each _____

Shipping & Handling _____

Subtotal _____

Mississippi Sales Tax _____

Total _____

- Check or money order payable to University Press of MS
 American Express MC VISA DISCOVER

Exp. Date _____

Card # _____

Signature _____

Ship to:

Name _____

Street Address _____

City/State/Zip _____

Phone _____

Email _____

Mail order to: University Press of Mississippi
3825 Ridgewood Road, Jackson, MS 39211

FAX order to: 601-432-6217

Call order to: 1-800-737-7788

Online order to: www.upress.state.ms.us



UNIVERSITY PRESS OF MISSISSIPPI



MONTHLY POST

Dr. David T. Dockery III RPG

MISSISSIPPI MADE

David T. Dockery, RPG, Office of Geology, and Vin Steponaitis, Director of the Research Laboratories of Archaeology, University of North Carolina at Chapel Hill

“Mississippi Made” applies not just to products and produce on store shelves today but to Native American artifacts found in states across the Lower Mississippi River Valley. The November 2013 issue of MDEQ’s *Environmental News* contains an article entitled “Effigy Pipes Made of Glendon Limestone from Mississippi,” which documents effigy pipes found in Mississippi, Alabama, Louisiana, and Arkansas, all of which are believed to have been crafted from the Glendon Limestone in the Vicksburg, Mississippi, area. These artifacts were examined in the Harvard Museum, The Cultural Resources Center of the Smithsonian Museum in Washington, D.C., the Grand Village of the Natchez Museum in Natchez, Mississippi, the Mississippi Department of Archives and History, and private collections. Another Glendon Limestone pipe was studied by the authors at the Gilcrease Museum in Tulsa, Oklahoma (*Gilcrease Journal*, 2014, volume 11, number 1, p. 36-45).

Effigy pipes were also carved from sandstone, several of which are believed to have been carved from the Catahoula Sandstone of southwestern Mississippi. A whirlwind, foundation-funded, tour by planes, trains, subways, and cars from December 7-9, 2015, examined sandstone effigy pipes in five museums in three states in three days, including: (1) the American Museum of Natural History in New York, (2) the Brooklyn Museum in Brooklyn, (3) the University of Pennsylvania Museum in Philadelphia, Pennsylvania, (4) the Smithsonian’s (National Museum of the American Indian) Cultural Resources Center and, across the street, (5) the Museum Support Center in Suitland, Maryland, just outside of Washington, D.C. Figure 1 shows staff (left) and effigy pipes studied at the American Museum of Natural History. Figure 2 shows staff and an effigy pipe studied at the Brooklyn Museum. Figure 3 shows staff and effigy pipes studied at the University of Pennsylvania Museum. Figures 4 and 5 show staff and effigy pipes studied at the Cultural Resources Center. Figure 6 shows the Museum Support Center and some of the effigy pipes studied at the Center.



MONTHLY POST

Dr. David T. Dockery III RPG



Figure 1. Left, American Museum of Natural History staff (front to back) Anibal Rodriguez, Nell Murphy, and Adam Watson. Right, sandstone effigy pipes studied at the museum. Pictures taken on December 7, 2015.



Figure 2. Left, Nancy Rosoff, Brooklyn Museum curator of The Arts of the Americas (far left) and Anibal Rodriguez (far right). Right, pipe studied with hand-held digital microscope and laptop computer. Pictures taken on December 7, 2015.



MONTHLY POST

Dr. David T. Dockery III RPG



Figure 3. Left, Meg Kassabaum, Assistant Professor of Anthropology at the University of Pennsylvania and Assistant Curator, American Section, University Museum, photographs a sandstone effigy pipe to be studied. Right, closeup of effigy pipe at the Penn Museum. Picture taken on December 8, 2015.



Figure 4. Left, entrance to the Smithsonian's Cultural Resources Center in Suitland, Maryland, just outside of Washington, D. C. Right, cart with stone effigy pipes to be studied. Pictures taken on December 8, 2015.



MONTHLY POST

Dr. David T. Dockery III RPG



Figure 5. Left, Meg Kassabaum (left) and Kelly McHugh (right) at an examination table in the Cultural Resources Center. Right, Vin Steponaitis, Director of the Research Laboratories of Archaeology, University of North Carolina at Chapel Hill (left), Meg Kassabaum (center), and Kelly McHugh, Objects Conservator, National Museum of the American Indian (right). Pictures taken on December 8, 2015.



Figure 6. Left, Smithsonian's Museum Support Center in Suitland, Maryland. Right, some of the stone effigy pipes examined at the Museum Support Center. The two at the lower left are carved from the mineral flourite. Pictures were taken on December 9, 2015.



MONTHLY DRILLING REPORT

Mississippi & Alabama

MISSISSIPPI

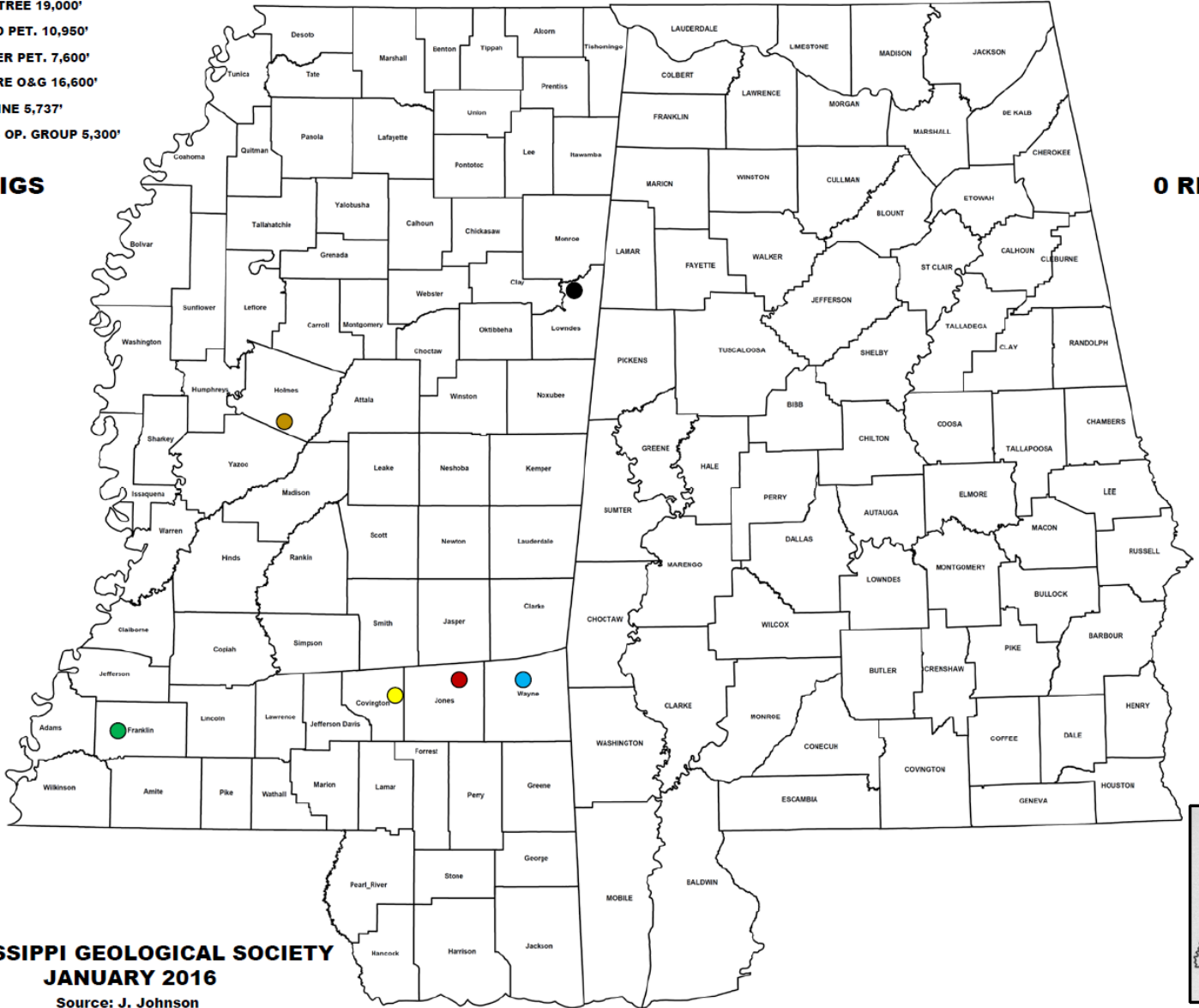
DRILLING WELLS & LOCATIONS

ALABAMA

- **ROUNDTREE 19,000'**
- **STROUD PET. 10,950'**
- **SPOONER PET. 7,600'**
- **VENTURE O&G 16,600'**
- **GULF PINE 5,737'**
- **TELLUS OP. GROUP 5,300'**

6 RIGS

0 RIGS



**MISSISSIPPI GEOLOGICAL SOCIETY
JANUARY 2016**

Source: J. Johnson

Rotary Rig Count
12/31/2015



| Location | Week | +/- | Week Ago | +/- | Year Ago |
|------------------------------------|------------------|------------|------------------|--------------|-----------------|
| Land | 672 | -3 | 675 | -1072 | 1744 |
| Inland Waters | 1 | 0 | 1 | -11 | 12 |
| Offshore | 25 | 1 | 24 | -30 | 55 |
| United States Total | 698 | -2 | 700 | -1113 | 1811 |
| Gulf Of Mexico | 25 | 1 | 24 | -29 | 54 |
| Canada | 83 | -43 | 126 | -125 | 208 |
| North America | 781 | -45 | 826 | -1238 | 2019 |
| U.S. Breakout Information | This Week | +/- | Last Week | +/- | Year Ago |
| Oil | 536 | -2 | 538 | -946 | 1482 |
| Gas | 162 | 0 | 162 | -166 | 328 |
| Miscellaneous | 0 | 0 | 0 | -1 | 1 |
| Directional | 60 | 0 | 60 | -115 | 175 |
| Horizontal | 549 | -5 | 554 | -787 | 1336 |
| Vertical | 89 | 3 | 86 | -211 | 300 |
| Canada Breakout Information | This Week | +/- | Last Week | +/- | Year Ago |
| Oil | 12 | -32 | 44 | -40 | 52 |
| Gas | 71 | -11 | 82 | -85 | 156 |
| Miscellaneous | 0 | 0 | 0 | 0 | 0 |
| Major State Variances | This Week | +/- | Last Week | +/- | Year Ago |
| Alaska | 11 | 0 | 11 | 2 | 9 |
| Arkansas | 1 | 0 | 1 | -10 | 11 |
| California | 7 | -2 | 9 | -15 | 22 |
| Colorado | 24 | 0 | 24 | -42 | 66 |
| Kansas | 12 | 0 | 12 | -17 | 29 |
| Louisiana | 58 | 2 | 56 | -51 | 109 |
| New Mexico | 38 | 0 | 38 | -63 | 101 |
| North Dakota | 53 | -2 | 55 | -116 | 169 |
| Ohio | 14 | -1 | 15 | -32 | 46 |
| Oklahoma | 87 | -1 | 88 | -122 | 209 |
| Pennsylvania | 27 | 1 | 26 | -26 | 53 |
| Texas | 321 | 2 | 319 | -519 | 840 |
| Utah | 3 | 0 | 3 | -20 | 23 |
| West Virginia | 15 | -1 | 16 | -13 | 28 |
| Wyoming | 17 | 0 | 17 | -39 | 56 |
| Major Basin Variances | This Week | +/- | Last Week | +/- | Year Ago |
| Ardmore Woodford | 2 | 0 | 2 | -4 | 6 |
| Arkoma Woodford | 8 | 0 | 8 | 3 | 5 |
| Barnett | 7 | -1 | 8 | -17 | 24 |
| Cana Woodford | 38 | -1 | 39 | -7 | 45 |
| DJ-Niobrara | 23 | 0 | 23 | -35 | 58 |
| Eagle Ford | 76 | -1 | 77 | -124 | 200 |
| Fayetteville | 1 | 0 | 1 | -7 | 8 |
| Granite Wash | 15 | 0 | 15 | -37 | 52 |
| Haynesville | 25 | 1 | 24 | -15 | 40 |
| Marcellus | 41 | 0 | 41 | -36 | 77 |
| Mississippian | 12 | 0 | 12 | -60 | 72 |
| Permian | 217 | 5 | 212 | -313 | 530 |
| Utica | 15 | -1 | 16 | -34 | 49 |
| Williston | 53 | -2 | 55 | -126 | 179 |



BOLAND SCHOLARSHIP WATCH

Faculty & Students,

It's 2016 and the Mississippi Geological Society along with the Boland Scholarship Fund would like to remind you that we want to honor the most outstanding overall students for the 2015-2016 year.

Each year, the Boland Scholarship awards 1 student from each institution a check that rewards students for their hard work and dedication to the Geosciences and their community.

We look forward to a great year and hope to see you at our monthly meetings.

Best Regards,

Matt Caton
Editor



THE UNIVERSITY OF
SOUTHERN
MISSISSIPPI

MILLSAPS
COLLEGE



BOLAND SCHOLARSHIP CONTRIBUTIONS

Thank you for your generous
contributions to the Boland Scholarship
Fund

I. Meade Hufford

Alvin Byrd

Maurice Birdwell

Joe White

Tom McMillan

Chris Franks

Geodigital Consulting, LLC

Rick Ericksen

Joseph & Melinda Boland

William & Liz Boland

Dave Cate



GEOLOGY POST

ARTICLES, PAPERS or NEWS?

ATTENTION!!!!!! Industry, Professors and Students:

I am adding a dedicated section that includes more content from the industry and our schools.

Submissions can include anything from professional papers, thesis abstracts, job opportunities to pictures. Anything!!!!

If you have any information or news you would like to share with the Society **PLEASE** email them to the MGS Editor at:

mcaton@tellusoperating.com

Thanks & Regards,

Matt Caton
Editor

GEO LINK POST

USGS TAPESTRY OF TIME AND TERRAIN <http://tapestry.usgs.gov> The CCGS is donating to all of the 5th and 6th grade schools in the Coastal Bend. Check it out—it is a spectacular map. You might want a framed one for your own office. The one in my office has glass and a metal frame, and it cost \$400 and it does not look as good as the ones we are giving to the schools. Call Owen 510-6224 if you want one for your office for \$150. Duncan, Mike, Chris, Dave, Bob Randy, Seb., Kevin, Ken, Craig, Patrick, Robert.

FREE TEXAS TOPO'S <http://www.tnris.state.tx.us/digital.htm> these are TIFF files from your state government that can be downloaded and printed. You can add them to SMT by converting them first in Globalmapper. Other digital data as well.

FREE NATIONAL TOPO'S [http://store.usgs.gov/b2c_usgs/b2c/start/\(xcm=r3standardpitrex_prd\)/.do](http://store.usgs.gov/b2c_usgs/b2c/start/(xcm=r3standardpitrex_prd)/.do) go to this webpage and look on the extreme right side to the box titled TOPO MAPS DOWNLOAD TOPO MAPS FREE.

<http://www.geographynetwork.com/> Go here and try their top 5 map services. My favorite is 'USGS Elevation Date.' Zoom in on your favorite places and see great shaded relief images. One of my favorites is the Great Sand Dunes National Park in south central Colorado. Nice Dunes.

<http://antwrp.gsfc.nasa.gov/apod/astropix.html> Astronomy picture of the day — awesome. I click this page everyday.

<http://www.spacimaging.com/gallery/ioweek/iow.htm> Amazing satellite images. Check out the gallery.

<http://www.ngdc.noaa.gov/seg/topo/globegal.shtml> More great maps to share with kids and students.

www.geo.org Don't forget we have our own web page.

<http://micro.magneet.fsu.edu/primer/java/scienceoptiscu/owersof10/>

<http://asterweb.jpl.nasa.gov/galery/default.htm> Great satellite images of volcanoes

<http://terra.nasa.gov/gallery/> More here

www.ermapper.com They have a great free downloadable viewer for TIFF and other graphic files called ER Viewer.

www.drillinginfo.com This is an incredible (subscription) well and completion data service for independents. Can be demo'ed for free.

<http://terrasrver.com/> Go here to download free aerial photo images that can be plotted under your digital land and well data. Images down to 1 meter resolution, searchable by Lat Long coordinate. Useful for resolving well location questions.

<http://www.fs.fed.us/gpnf/volcanocams/msh/> This is a live cam of Mt. St. Helens refreshed every 5 minutes. At the bottom are old videos of past eruptions in this cycle. It is worth a watch especially now.



MGS HONORARY MEMBERS

Esther Applin*

Verne Culbertson *

David C. Harrell*

Dudley J. Hughes*

Walter P. Jones*

Winnie McGlammery*

Maurice E. Miesse*

Marvin E. Norman*

Thurston Connell Rader*

Henry Toler*

Charles H. Williams

David Cate

Paul Applin*

H. Leroy Francis*

Oleta R. Harrell*

Urban B. Hughes*

Harold Karges*

Thomas McGlothin*

Emil Monsour*

Marvin L. Oxley*

Baxter Smith*

H. Vaughn Watkins

Jerry Zoble

Stanley King

Lawrence F. Boland*

Jim Furrh*

Ralph Hines

Wendell B. Johnson *

Wilbur H. Knight*

Frederic F. Mellen*

William H. Moore*

Richard R. Priddy*

Harry V. Spooner

Stewart W. Welch*

Julius Ridgeway

*** deceased**

MEMBERSHIP APPLICATION / RENEWAL FORM

MISSISSIPPI GEOLOGICAL SOCIETY

P.O. BOX 422, JACKSON, MISSISSIPPI 39205-0422

2015-2016

Membership year is June through May

New Membership (\$20/yr)_____ Renewal (\$20/yr)_____ Student (FREE)_____ Associate (\$20/yr)_____

Boland Scholarship Fund Donation \$_____ Total Amount Enclosed \$_____

Last Name:_____ First:_____ MI:_____

Mailing Address:_____

Office Phone:_____ Home Phone:_____ FAX:_____

E-mail Address: _____

College/University Attended: _____

Degree(s) Obtained and Year(s) Awarded: _____

Professional Associations, Certifications, & Licenses: _____



2015-2016 MGS MEMBERS

| | | |
|------------------|--------------------|--------------------|
| Ken Adams | Frank Heitmuller | James Nix |
| Bill Bagnall | Dan Herlihy | James Norris |
| Larry Baria | Robert Herr | Aleksandra Novak |
| Neil Barnes | David Higgenbotham | Charles Peel |
| Tiffany Berry | Paige Hilburn | Jim Rawls |
| Maurice Birdwell | David Hilton | Philip Reeves |
| Alvin Bird | Ralph Hines | Armando Ricci |
| Dawn Bissell | Todd Hines | Julius Ridgeway |
| Randy Bissell | Johnny Holifield | Darrel Schmitz |
| Michael Bograd | Ed Hollingsworth | Bob Schneeflock |
| Chris Bowen | I. Meade Hufford | Thomas Seitz |
| Keith Bowman | Kevin Jeffreys | George Self |
| Robert Branson | Lars Johnson | Jacob Sharp |
| Terry Bryant | Joe Johnson | Jeremi Simmons |
| J. C. Carlisle | Fred Katzenmeyer | Chales Smith |
| Dave Cate | Karl Kaufmann | Harry Spooner |
| Matt Caton | Emilie Kelly | Lindsay Stewart |
| Kayla Calhoun | Stanley King | John Sullivan |
| Charles Coney | Brenda Kirkland | Andy Sylte |
| Phil Cook | Cragin Knox | Tom Sylte |
| Robert Craft | James Landrem | Mike Taylor |
| Jamie Crawford | Jonathan Leard | Sid Thompson |
| Andrew Cummings | Cody Lenert | Stan Theiling |
| David Dockery | Howard Lowery | Janet Verret |
| Rick Ericksen | Joe Lott | Watts Ueltschey |
| Jo Everett | Joe McDuff | Wayne Upchurch |
| Jim Files | Tom McMillan | Steve Walkinshaw |
| Edward Flynt | Drew Mills | Vaughn Watkins |
| Chris Franks | Jim Michael | Jeremy Weremelchik |
| Stan Galicki | Jonney Mitchell | Robert Weyman |
| Bob Gaston | Jack Moody | Joe White |
| Tom Giosa | Charlie Morrison | Charlie Williams |
| Danny Harrelson | Asa Mullenaxx | Mark Wyatt |
| Jamie Harris | Jess New | Jerry Zoble |
| Lynn Boone | Mark Getscher | Roy Geoghegan |

*This list is updated monthly. Please contact Bill Bagnall if you have questions.

MGS ADVERTISING ORDER FORM

September 2015 – May 2016

I. Bulletin Advertisements:

| <u>Size</u> | <u>Rate/Year</u> | <u>Amt. Remitted</u> |
|----------------------------------|------------------|----------------------|
| Full Page Ad (6" x 8") | \$500 | \$ _____ |
| 1/2 Page Ad (6" x 4") | \$300 | \$ _____ |
| 1/4 Page Ad (3" x 4") | \$200 | \$ _____ |
| Business Card Ad (1 1/2" x 3") | \$100 | \$ _____ |
| Professional Listing (1/2" x 3") | \$ 50 | \$ _____ |

II. Web Page Advertisements (www.missgeo.com):

| <u>Type of Web Page Ad</u> | <u>Rate/Year</u> | <u>Amt. Remitted</u> |
|--|------------------|----------------------|
| Front Page Sponsor (Banner Ad – limit of 5) | \$500 | \$ _____ |
| Second Page Banner Ad | \$250 | \$ _____ |
| Professional Listing/Link | \$100 | \$ _____ |

(Note: Please contact Steve Walkinshaw at (601) 607-3227 or mail@visionexploration.com for details concerning placing your ad on the MGS web site.)

Total Remitted \$ _____

Please make checks payable to the Mississippi Geological Society. If you have any questions, contact Matt Caton at (601) 898-7444 or mcaton@tellusoperating.com

Howard Lowery
Account Representative



Accurate Data, Reliable Solutions

800.256.1147

601.441.9857

www.stratagraph.com

hlowery@stratagraph.com

P.O. Box 53848
Lafayette, LA 70505

Joseph H. McDuff
Geologist



351 Chapel Loop
Mandeville, LA 70471
985.845.9430

jhmcduff@charter.net

VALIOSO
PETROLEUM CO., INC.



KARL J KAUFMANN

504 KEYWOOD CIRCLE SUITE A
FLOWOOD, MS 39232

PHONE: 601-936-3601
CELL: 601-209-0948
VALIOSO@BELLSOUTH.NET

Joe R. White, Jr.
Petroleum Geologist

400 Travis St., Ste. 909
Shreveport, LA 71101
Ofc. 318-703-2311
Cell. 318-423-9828
Hm. 318-949-3539

AAPG CPG #5580
MS RPG #0097
LA RPG (SUBMITTED)
Jwhite1362@aol.com
Joerjrw@gmail.com

Baldwin Madden Energy, LLC
Oil and Gas Acquisitions and Development

Christopher D. Franks
Senior Geologist

333 Texas Street, Suite 1919
Shreveport, Louisiana 71101-3666
318-429-2204 / 318-429-2229 (fax)
chris.franks@BaldwinMadden.com

Energy Land Services
Oil & Gas Leases

I. Meade Hufford, CPL
Owner

P. O. Box 302
144 Wharton Grove Ln
Weems, VA 22576
Phone: 804-438-5852
Fax: 804-438-9043
Cell: 713-705-7235
hufford1913@aol.com

Boone  **Exploration, Inc.**

Lynn D. Boone
President

J.C. Carlisle
Vice President

21 Wire Road
P.O. Box 8660
Huntsville, TX 77340

Phone: 936-295-4066
Fax: 936-295-4042
Email: jcc9551@aol.com

BRUNINI

WATTS C. UELTSCHY

OFFICE (601) 960-6871 | FAX (601) 960-6902

E-MAIL WATTS@BRUNINI.COM | WWW.BRUNINI.COM

BRUNINI, GRANTHAIR, GROWER & HEWES, PLLC
ATTORNEYS AT LAW

190 EAST CAPITOL STREET, SUITE 100 JACKSON, MS 39201
MAILING ADDRESS: P.O. DRAWER 119 JACKSON, MS 39205



MGS PAST PRESIDENTS

| | | | |
|-----------|-----------------------|------------|----------------------------|
| 1939-1940 | Henry N. Toler | 1973-1974 | Larry Walter |
| 1940-1941 | Urban B. Hughes | 1974-1975 | W. E. "Gene" Taylor |
| 1941-1942 | J. Tom McGlothlin | 1975-1976 | Jerry E. Zoble |
| 1942-1943 | Dave C. Harrell | 1976-1977 | P. David Cate |
| 1943-1944 | K. K. "Bob" Spooner | 1977-1978 | Sarah Childress |
| 1944-1945 | L. R. McFarland | 1978-1979 | Les Aultman |
| 1945-1946 | J. B. Story | 1979-1980 | Philip R. Reeves |
| 1946-1947 | Frederic F. Mellen | 1980-1981 | Marshall Kern |
| 1947-1948 | H. Lee Spyres | 1981-1982 | Stephen Oivanki |
| | Robert D. Sprague | 1982- 1983 | James W. "Buddy" Twiner |
| 1948-1949 | Robert D. Sprague | 1983- 1984 | Charles H. Williams |
| 1949-1950 | E. T. "'Mike" Monsour | 1984- 1985 | C. Kip Ferns |
| 1950-1951 | J. Tate Clark | 1985-1986 | Steven S. Walkinshaw |
| | Charles E. Buck | 1986-1987 | J. R. "'Bob" White |
| 1951-1952 | George W. Field | 1987-1988 | Harry Spooner |
| 1952-1953 | James L. Md11in, Jr. | 1988-1989 | Stanley King |
| 1953-1954 | Wilbur H. Knight | 1989-1990 | Stan Galicki |
| 1954-1955 | A. Ed Blanton | 1990-1991 | E. James Files, Jr. |
| 1955-1956 | Gilbert A. Talley | 1991-1992 | Stephen L. Ingram, Sr. |
| 1956-1957 | Ben Ploch | 1992-1993 | Michael Noone/Stanley King |
| 1957-1958 | Emil Monsour | 1993-1994 | Brian Sims |
| 1958-1959 | Charles Brown | 1994-1995 | C. W. "Neil" Barnes |
| 1959-1960 | M. F. Kirby | 1995-1996 | Lester Aultman |
| 1960-1961 | Rudy Ewing | 1996-1997 | Jack S. Moody |
| 1961-1962 | Xavier M. Franscogna | 1997-1998 | George B. Vockroth |
| 1962-1963 | Robert B. Ross | 1998-1999 | Rick L. Ericksen |
| 1963-1964 | William A. Skees | 1999-2000 | Stanley King |
| | Marvin Oxley | 2000-2001 | John C. Marble |
| 1964-1965 | James F. Bollman | 2001-2002 | Andrew T. Sylte |
| 1965-1966 | Sankey L. Blanton | 2002-2003 | Aaron Lasker |
| 1966-1967 | Alan Jackson | 2003-2004 | John G. Cox |
| 1967-1968 | Julius M. Ridgway | 2004-2005 | James E. Starnes |
| 1968-1969 | Edward D. Minihan | 2005-2006 | Todd Hines |
| 1969-1970 | Kevin E. Cahill | 2006-2007 | Bob Schneeflock |
| 1970-1971 | John Lancaster | 2007-2008 | Tony Stuart |
| 1971-1972 | Larry Boland | 2008-2009 | Lisa Ivshin |
| 1972-1973 | Charles Barton | 2009-2010 | Joe Johnson |
| | | 2010-2011 | Brian Sims |
| | | 2011-2012 | Stanley King |
| | | 2012-2013 | Jim Files |
| | | 2013-2014 | Neil Barnes |
| | | 2014-2015 | Ezat Heydari |