

MISSISSIPPI GEOLOGICAL SOCIETY

eBULLETIN

Volume 68

No. 1

September 2019



FALL BBQ

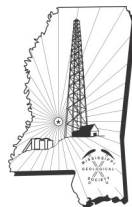
MISSISSIPPI GEOLOGICAL SOCIETY: A BRIEF HISTORY

MADISON QUADRANGLE

Dr. David T. Dockery, RPG, Office of Geology

BOB SCHNEEFLOCK

A Daughter's Account



www.missgeo.com



MGS 2019-2020 BOARD OF DIRECTORS

Officers

President	James Sparks	MDEQ	jsparks@mdeq.ms.gov	(601) 961-5171
1st Vice President	TBD			
2nd Vice President	Steve Walkinshaw	Vision Exploration	steve@visionexploration.com	(601) 607-3227
Treasurer	Paul Parrish	MDEQ	pparrish@mdeq.ms.gov	(601) 961-5171
Webmaster	Steve Walkinshaw	Vision Exploration	steve@visionexploration.com	(601) 607-3227
Advertising	Matt Caton	Tellus Operating	mcaton@tellusoperating.com	(601) 898-7444
Editor	Matt Caton	Tellus Operating	mcaton@tellusoperating.com	(601) 898-7444

Boland Scholarship

President	James Sparks	MDEQ	jsparks@mdeq.ms.gov	(601) 961-5171
Secretary	Neil Barnes	Independent		
Members	Steve Walkinshaw	Vision Exploration	steve@visionexploration.com	(601) 607-3227
	Tony Stuart	Venture Oil & Gas		(601) 428-7725
	James Starnes	DEQ		
	Bob Schneeflock	Geodigital Consulting		(601) 853-0701
	Dave Cate	Pruet Oil		

Honorary Membership

Chairman	Charles H. Williams, Jr.			(601) 982-1212
Members	Dave Cate			(601) 718-9397
	Vaughn Watkins			(601) 898-9347

MGS Representatives

AAPG	Maurice Birdwell	Independent		(601) 936-6939
GCAGS	Danny Harrelson	U.S. Army R&D		(601) 634-2685

Other

Environmental	John Ryan	Allen		(601) 936-4440
Historian	Stanley King	Independent		(601) 842-3539



PRESIDENT'S LETTER

James O. Sparks, RPG



James O. Sparks, RPG

It will be an honor to serve as MGS President for this year, and I would like to thank Matt Caton, and Steve Walkinshaw for their continued service as 2nd Vice President, Bulletin Editor, and Webmaster. I would also like to thank Paul Parish for his continued service as Treasurer.

According to the U.S. Department of Energy, the U.S. has overtaken Russia and Saudi Arabia as the world No. 1 producer of crude oil. The average daily production has been 12.2 million barrels. The price as of September 11 was \$57.00 a barrel and Natural Gas at \$2.65 per MCF.

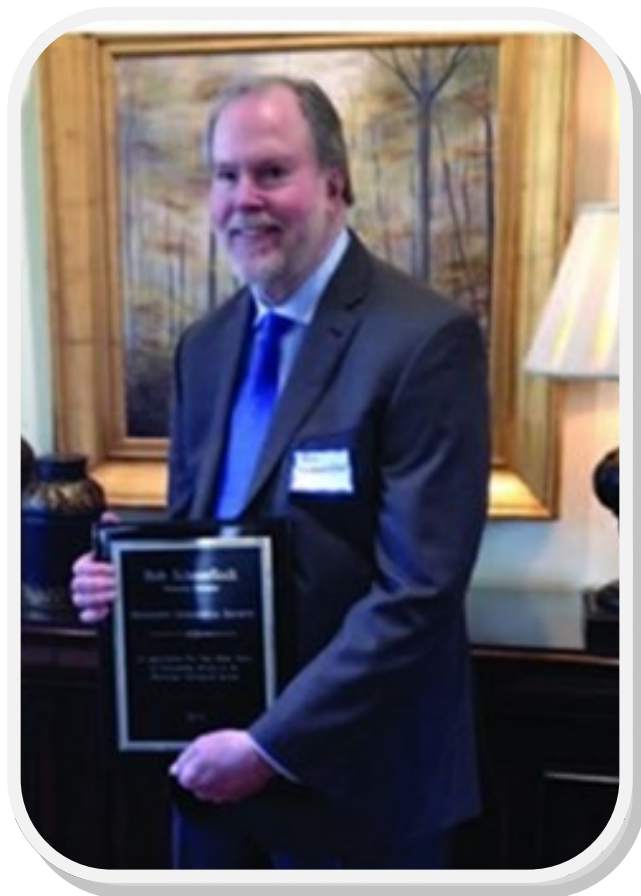
Mississippi has seen a renewed interest in the Tuscaloosa Marine Shale play, with 40 permits issued in 2019, and 6 drilled.

The Fall BBQ will be at the Jackson Yacht Club, beginning at 5:30 September 12.

Hope to see everyone at the BBQ.

2019-2020 MGS MEETING SCHEDULE

When	What/Who	Where
September 12, 2019	Fall BBQ	Jackson Yacht Club-5:30pm
October 9, 2019	TBD	River Hills – 11:30am
November 12, 2019	TBD	River Hills – 11:30am
TBD	TBD	TBD
January 9, 2020	TBD	River Hills – 11:30am
February 13, 2020	TBD	River Hills – 11:30am
March 12, 2020	TBD	River Hills – 11:30am
April 9, 2020	Boland Scholarship Awards	River Hills – 11:30am
May 14, 2020	Spring Fling	Jackson Yacht Club– 5:30pm



Bob Schneeflock

OFFICERS MEETINGS

September 10, 2019
October 7, 2019
November 10, 2019
January 7, 2020
February 11, 2020
March 10, 2020
April 7, 2020
May 12, 2020

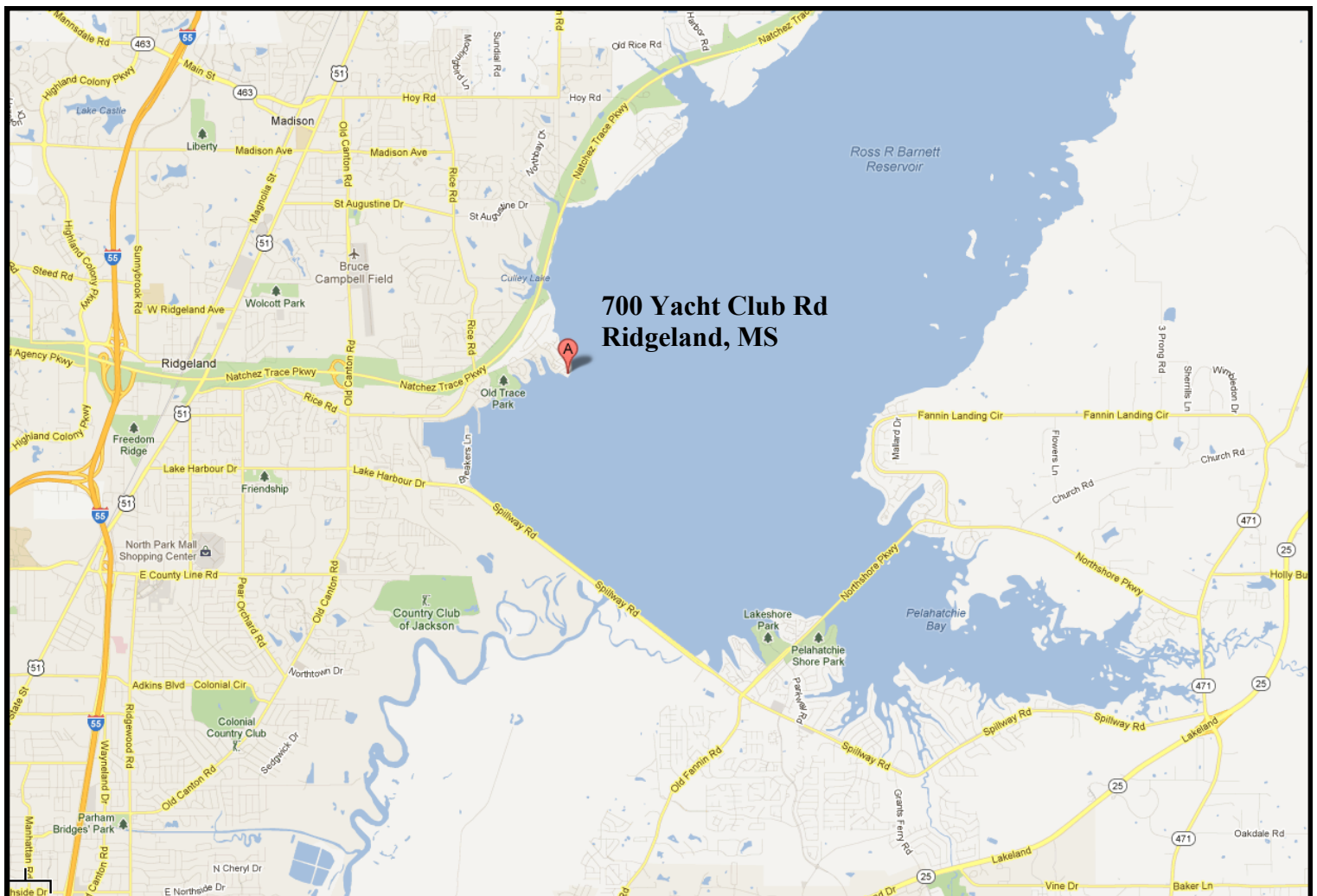


FALL BBQ

Jackson Yacht Club

Come join the Mississippi Geological Society to kick off 2019-2020 at our annual Fall BBQ!!!!!!

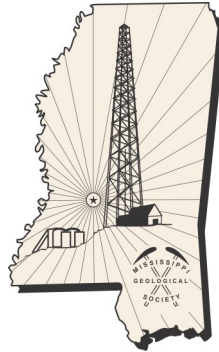
**Thursday September 12th
Jackson Yacht Club
5:30pm Start**





MISSISSIPPI GEOLOGICAL SOCIETY

A Brief History



The Mississippi Geological Society was founded on November 28, 1939 by 38 of the 57 petroleum geologists then employed in Jackson, Mississippi. The state had just emerged as a significant oil and gas province following the discovery of large (200+ MMBO) oil reserves in Tinsley Field earlier in the year. The Society was organized with the stated purpose of "the stimulation of interest in geology and related sciences..., the encouragement of scientific research among members..., and the discussion and dissemination of geological information".

From its inception, the Society has pursued the attainment of its goals and stated purpose through the continued sponsorship of field trips, technical presentations, publications, and involvement in community affairs.

Throughout the years, the Society has sponsored twenty field trips, each with an accompanying guidebook. Copies of several of the more popular field trip guidebooks are available via the Society's Publications department. Some of the more recent field trips have been undertaken in conjunction with a seminar covering the subject of the trip.

In April 1941, the Society became affiliated with the American Association Of Petroleum Geologists (AAPG). Ten years later (1951), the Society joined the Gulf Coast Association Of Geological Societies (GCAGS). MGS hosted the AAPG sectional conventions in 1946 and 1949, and GCAGS/GCS-SEPM conventions in 1955, 1960, 1968, 1975, 1983, and 1992.

Involvement in research and technical projects has always been a hallmark of the Society. In 1945, MGS was instrumental in the oversight and assembly of data for the new and revised Geological Map of Mississippi. Similarly, the Society also established the MGS Library in 1945 in order to assist geologists and students in the pursuit of their research. The Student Award Program was instituted by the Society in 1947 to recognize outstanding geologic papers originated by students majoring in geologic disciplines at the state's colleges and universities.

In 1954, the Society embarked upon the first of many financial assistance programs with the establishment of its Student Loan Program, which was designed to provide support to selected college students majoring in geology throughout the state. This was followed in 1955 with the Society's awarding of scholarships to deserving high school winners in the Science Fair that was sponsored by the Mississippi Academy Of Science. More recently, the Lawrence Boland Memorial Scholarship Fund, established by the Society in 1980, has celebrated over twenty years of annual scholarship awards to one student from each of the four colleges and universities in the state that support a significant geology curriculum. Finally, the MGS Student Award Program and the MGS Student Assistance Program continue to recognize and provide assistance to outstanding students in the field of geology throughout the state's educational system.



MISSISSIPPI GEOLOGICAL SOCIETY

A Brief History

From the early days of the Society to the present, publications have played a major role in the attainment of the purpose of the Society as set forth in its Constitution. Besides the field trip guidebooks already mentioned, other MGS publications include a number of composite and basin type logs, correlation sections, and structural / stratigraphic cross-sections. More importantly, the Society has published a series of field studies since 1952, when it first released a compendium of Wilcox oil fields, including field maps, reservoir information, and production data. The Society followed its Wilcox volume with the release of its original "Redbook" - focusing on producing fields throughout the rest of the state - in 1957. Since that time, the Society has updated its Wilcox volume and released eight successive updates to the popular Redbook, with the last having been released in 1995. In addition, MGS publishes a monthly Bulletin that is distributed to all members during the Society's active months. Finally, this website has been created in order to enable the Society to utilize the internet in distributing relevant news, geologic articles, and other materials of interest to its members and the public at large.

Technical programs and seminars have been sponsored by the Society since its inception. Seminars have focused on the Cambro-Ordovician Knox Gas Play in the Black Warrior Basin of Northeast Mississippi, salt tectonics, local sequence stratigraphy and relationship to outcrops, and the Cotton Valley Gas Play within the Mississippi Interior Salt Basin. MGS also hosts monthly luncheon meetings, held from September through May of each year, where a variety of speakers give technical presentations on topics and issues of interest to the Society's members.

During the late 1970's and early 1980's, when oil and gas exploration and production peaked in the state, membership rose to its highest level with approximately 500 members. The Society has made a special effort in recent years to encourage membership and participation by non-petroleum geologists, and currently counts a significant number of environmental, hydrological, and governmental professionals among its members. Emphasis on water quality and sensitive environmental issues, as well as the preservation of subsurface data throughout the state, have been and will continue to be important focus issues for the Society.

In the summer of 1985, the Society sponsored a field trip of historical significance when Fred Mellen led a group of MGS members on foot to traverse the very hillsides of Yazoo County that he had mapped 47 years previously in his discovery of the large surface anticline that later became the giant Tinsley Field. Four years later, the Society and other petroleum-related organizations in Mississippi sponsored a celebration of the 50-year anniversary of the discovery of Tinsley - the state's first commercial oil field - and the subsequent founding of the Society. Sadly, Fred Mellen is no longer with us, but his legacy - like that of so many other prominent MGS members - will endure.

Today, despite the cyclical nature of the oil and gas business and the continuing evolution of the other equally important geologic professions within the state of Mississippi, the same purpose and vision that originated the Society continues to propel it into the future, due to the strong foundation of a committed membership and adaptation to changing conditions in a remarkably diverse geological field.



BOLAND SCHOLARSHIP WATCH

Faculty & Students,

This is a new year and the Mississippi Geological Society along with the Boland Scholarship Fund would like to remind you that we want to honor the most outstanding overall students for the 2019-2020 year.

Each year, the Boland Scholarship awards 1 student from each institution a check that rewards students for their hard work and dedication to the Geosciences and their community.

We look forward to a great year and hope to see you at our monthly meetings.

Best Regards,

Matt Caton
Editor



THE UNIVERSITY OF
SOUTHERN
MISSISSIPPI

MILLSAPS
COLLEGE



CURRENT PRICES



Marketwatch





MONTHLY POST

Dr. David T. Dockery III RPG

MDEQ OFFICE OF GEOLOGY ANNOUNCES THE PUBLICATION OF THE *GEOLOGIC MAP OF THE MADISON QUADRANGLE.*

David T. Dockery III, RPG

I call our newly released *Geologic Map of the Madison Quadrangle* by Jonathan Leard and David Thompson (Open File Report OF-148) our million-dollar map. Much of the map has either Yazoo Clay (Ty, yellow coded) or alluvium (Qal, buff) at the surface; the clay poses foundation problems, and the alluvium could be in a flood risk zone. However, along the west shore of the Ross Barnett Reservoir are terrace deposits (Qt, pink coded) of perched Pearl River sands which provide cover between a foundation and the Yazoo Clay (Figure 1).

Some terrace deposits are developed, while other are not and are a great opportunity anyone wanting to locate in the area and without being on the Yazoo Clay. Oh, did I mention that this map has building and house footprints so that structures can be seen above the underlying geology? What a help to anyone buying real estate in the area.

Figures 2-5 are clipped areas of the map, showing terrace deposits along the Pearl River and Reservoir's western valley wall (check out the Jackson Yacht Club). Figures 2 and 3 show terraces that are developed, while figures 4 and 5 show largely undeveloped terrace deposits.

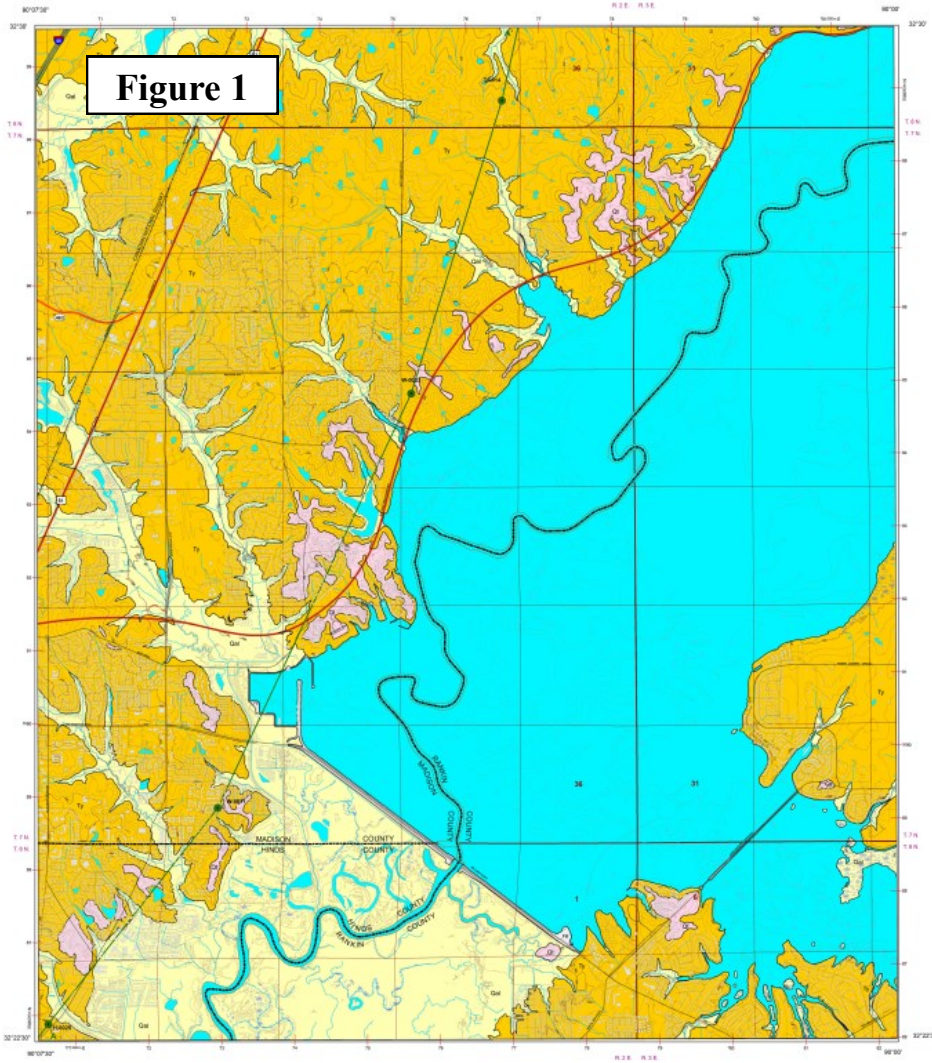
In Figure 6, Jonathan Leard is pointing on his map to a Yazoo Clay outcrop on the eastern shore of the Reservoir where he is standing. Here a slump in the Yazoo Clay has taken out portions of the back yards of three newly build homes. To get a digital copy of the map, use the link below.

<https://www.mdeq.ms.gov/geology/work-areas/publications-and-map-sales/categories/open-file-reports/of-148-geologic-map-of-the-madison-quadrangle-madison-rankin-and-hinds-counties-mississippi-53517/>



MONTHLY POST

Dr. David T. Dockery III RPG



MISSISSIPPI DEPARTMENT OF ENVIRONMENTAL QUALITY
 OFFICE OF GEOLOGY
 OPEN-FILE REPORT 148
GEOLOGIC MAP
 of the
MADISON QUADRANGLE
 Madison, Rankin, and Hinds Counties, Mississippi
 2019

Geology by
 Jonathan R. Leard, GIT and
 David E. Thompson, RPG

Dedicated to
 William H. Moore, State Geologist

- DESCRIPTION OF MAP UNITS**
- Artificial Fill**
 A significant amount of recent fill, not all represented on this map, is found in and around the Pecos Barred Reservoir area.
 - ALLUVIUM**
 Flood plain sands, silts, clays, and siltstone gravels. Thickness is variable and is dependent upon the size of the associated stream. Thickness up to 45 feet along the Pearl River in Rankin County. Yellow siltstone gravels in association with the active channel of the Pearl River in Rankin, Hinds, and Yazoo Counties.
 - LOESS**
 Silts, silt loams, silty loams, and silty clays. Loess is represented in this quadrangle by highly weathered, loamy, sandstone and clayey siltstone, also referred to as brown loess. Loess deposits are commonly 10 to 20 feet thick and are a significant component of the geology.
 - TERRACE DEPOSITS**
 Sand, siltstone, and clayey siltstone. Due to weathering, terrace deposits are commonly silty and clayey. Terrace deposits are commonly 10 to 20 feet thick and are a significant component of the geology.
 - YAZOO CLAY**
 Clay, sandstone, and siltstone. Yazoo clay is commonly 10 to 20 feet thick and is a significant component of the geology.
- SYMBOLS**
- Well locality and identification number
 - ✕ Abandoned surface water pipe



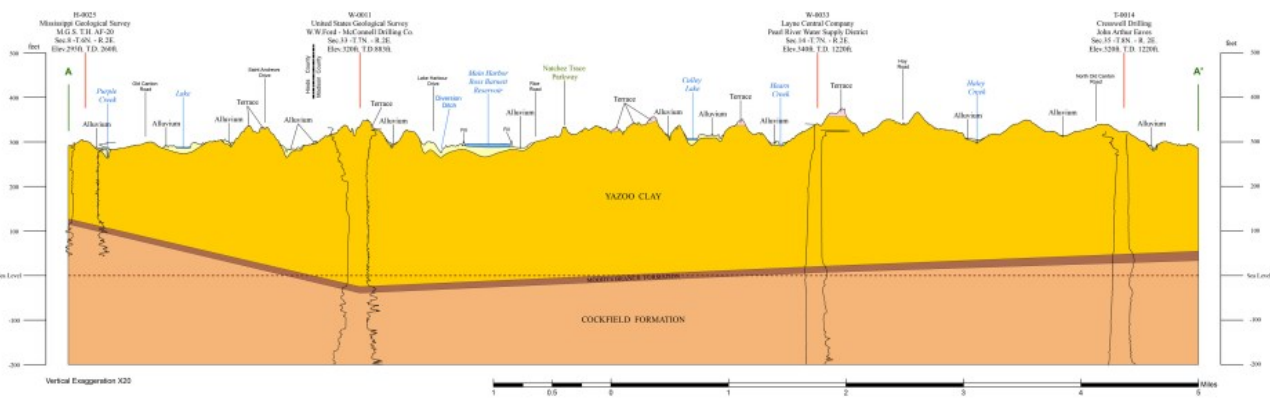
GEOLOGIC MAP
 MADISON QUADRANGLE
 Madison, Rankin, and Hinds Counties, Mississippi

SCALE 1:24,000

Copyright © 2019 Mississippi Department of Environmental Quality, Office of Geology

DRAFT 08/21/2019

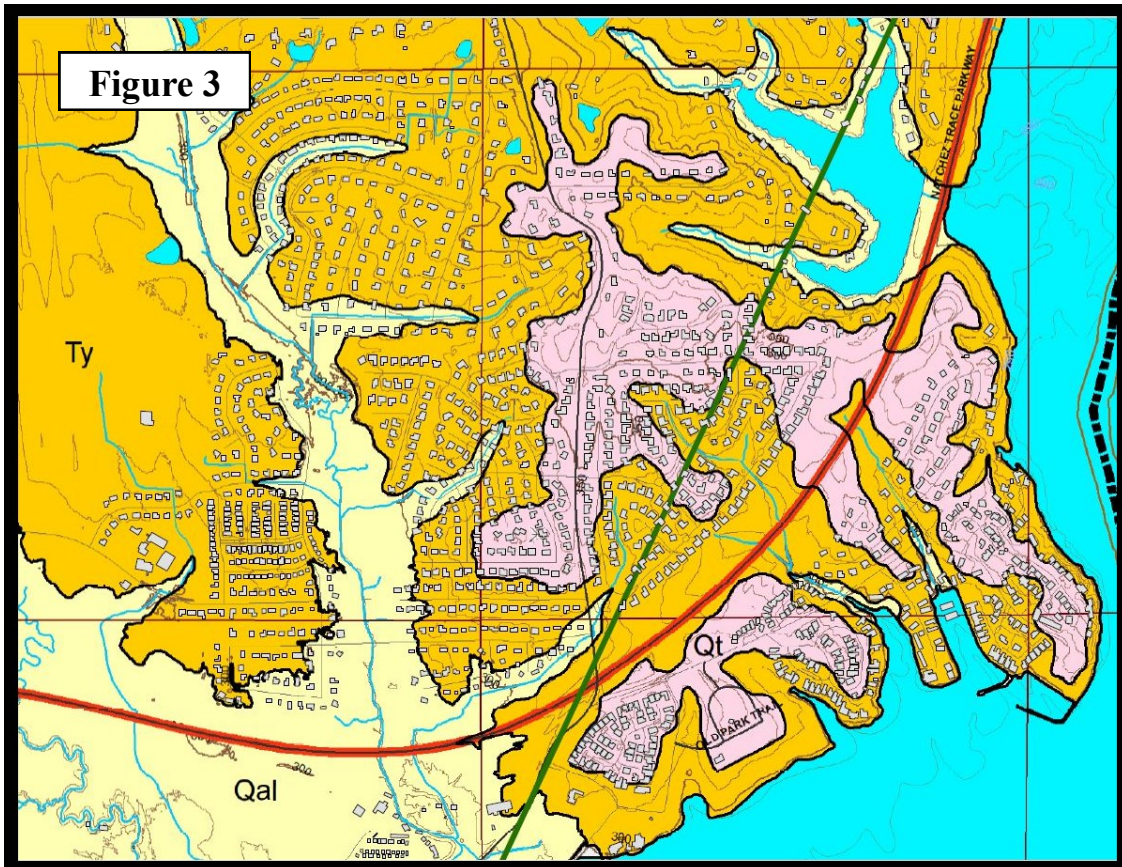
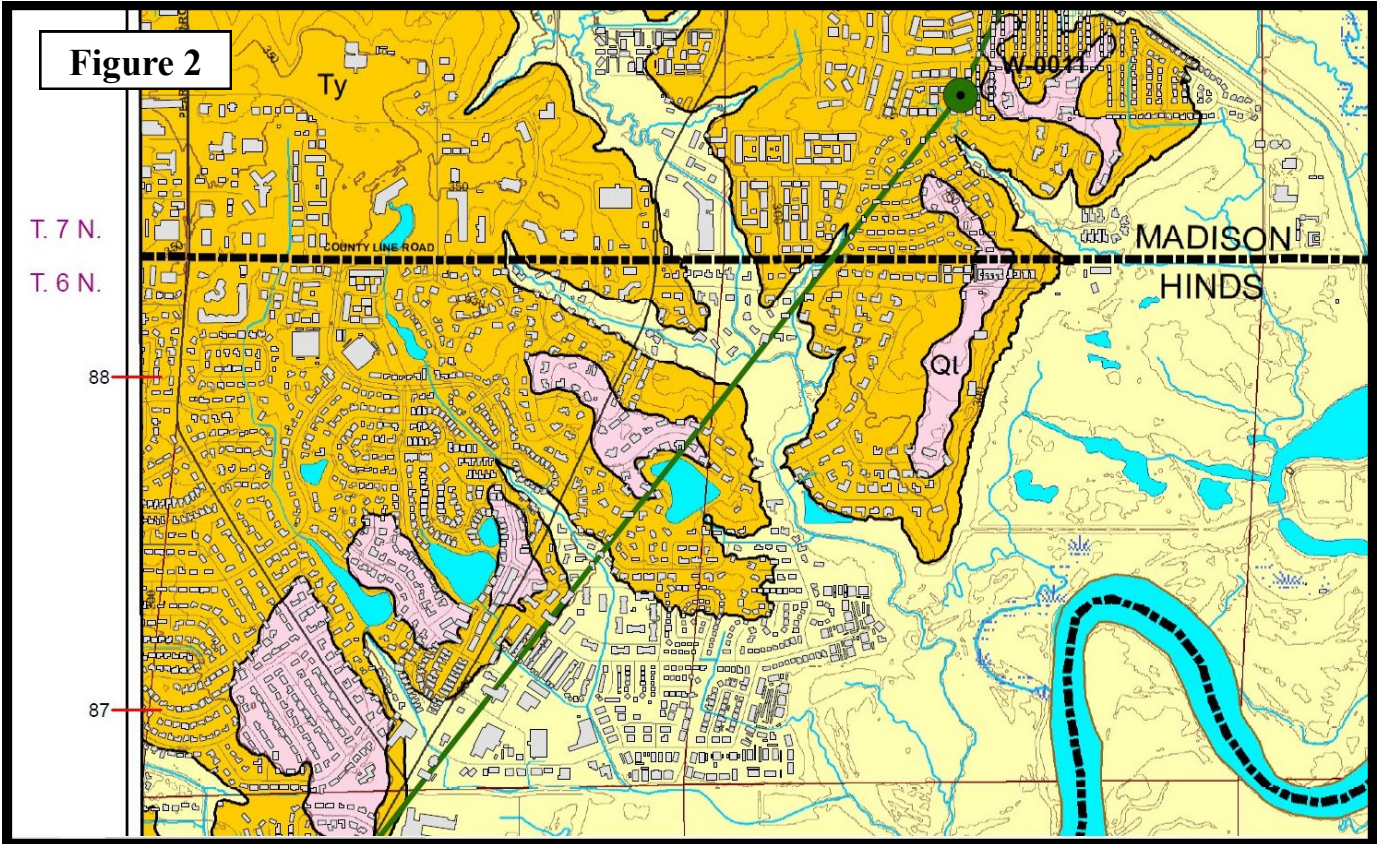
Structural Cross-Section of the Madison 7.5-Minute Geologic Quadrangle





MONTHLY POST

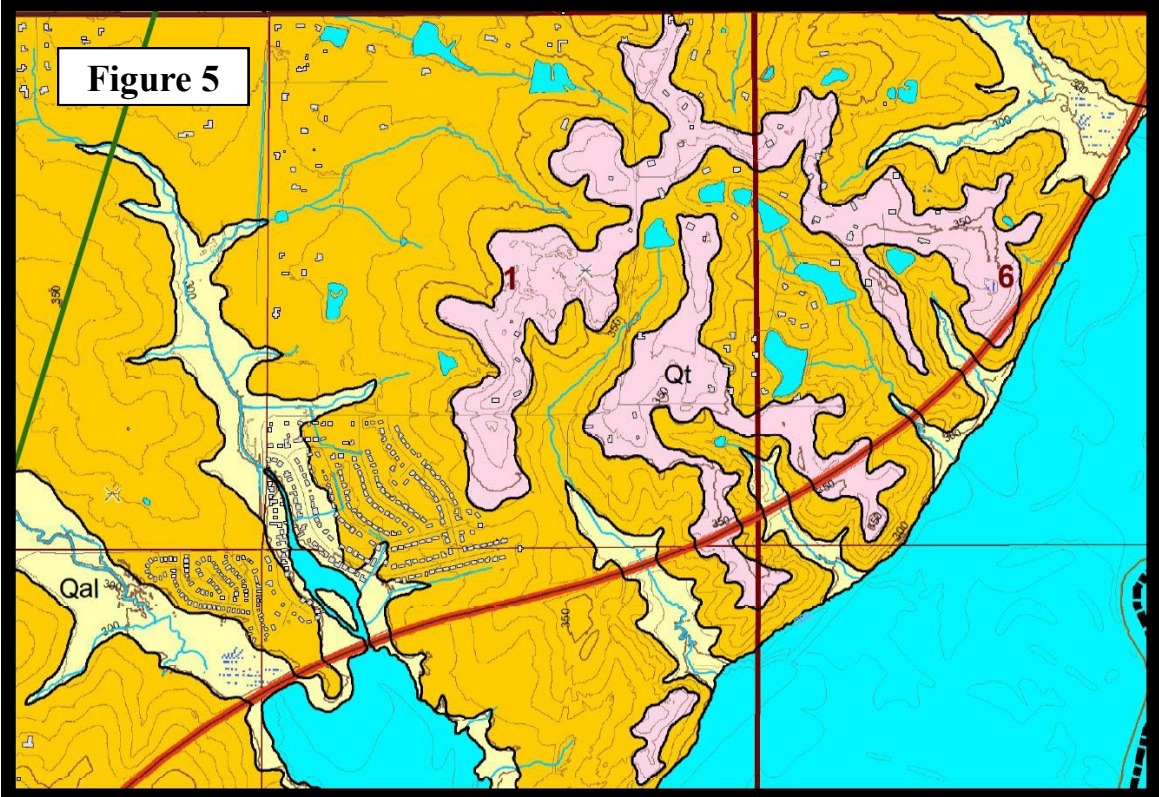
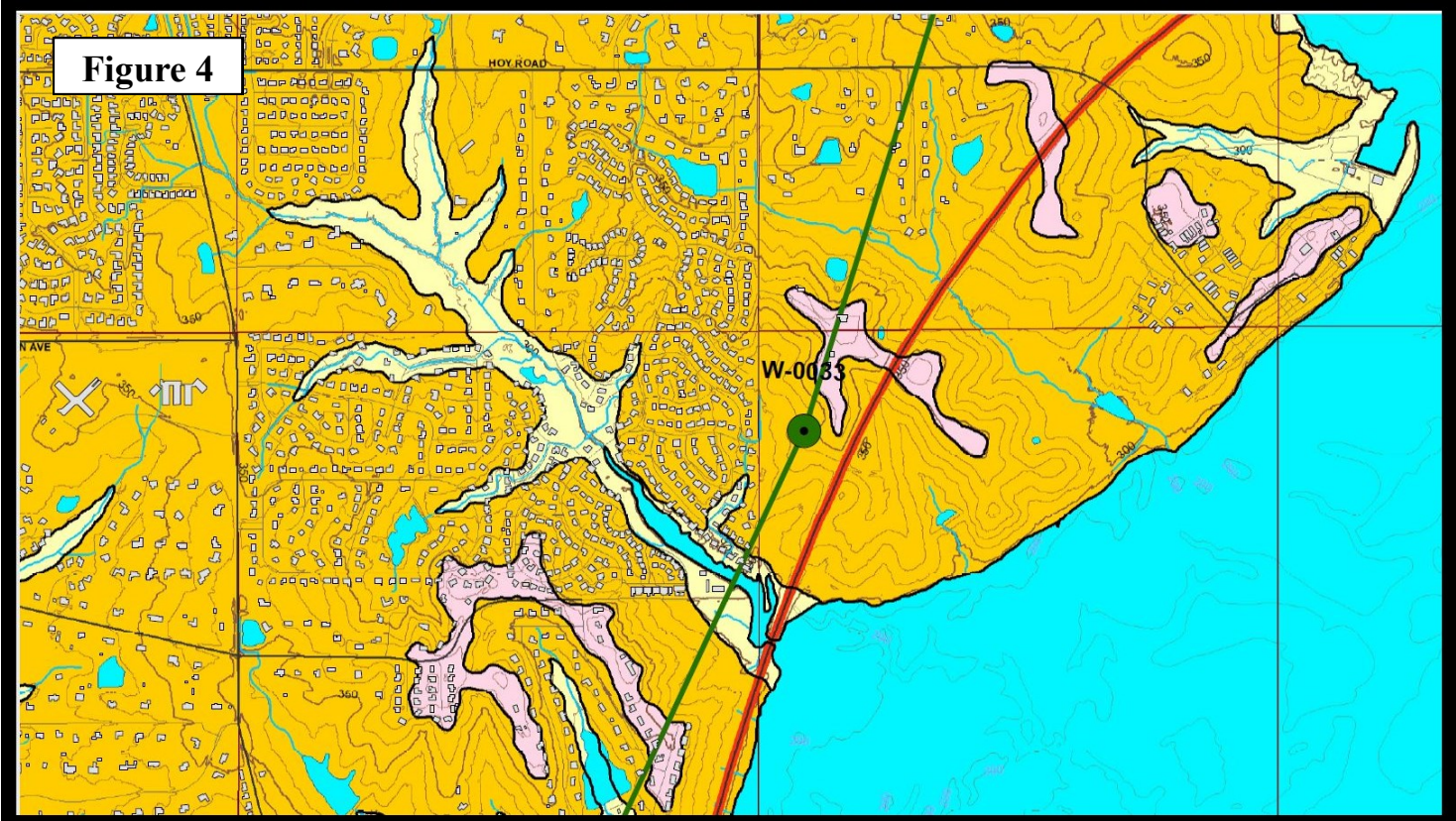
Dr. David T. Dockery III RPG





MONTHLY POST

Dr. David T. Dockery III RPG





MONTHLY POST

Dr. David T. Dockery III RPG

Figure 6





GEOLOGY POST

ARTICLES, PAPERS or NEWS?

ATTENTION!!!!!! Industry, Professors and Students:

I am adding a dedicated section that includes more content from the industry and our schools.

Submissions can include anything from professional papers, thesis abstracts, job opportunities to pictures. Anything!!!!

If you have any information or news you would like to share with the Society **PLEASE** email them to the MGS Editor at:

mcaton@tellusoperating.com

Thanks & Regards,

Matt Caton
Editor



MONTHLY POST

Bob Schneeflock

Dad

A daughter's account of the one-of-a kind,
second-to-none Robert "Bob" Schneeflock





MONTHLY POST

Bob Schneeflock

Beatrice, Nebraska. It doesn't sound like an exciting town, but that's where Dad, Robert "Bob" Schneeflock, was born in 1945. He was the first son of an honest, hardworking dairy farming family of German descent. His family relocated to Illinois before finally settling in Foley, Alabama to escape the harsh winters of the north. Dad worked at Foley Dairy with his parents, but he decided at a young age that farm life was not for him.

Dad graduated earned a geology degree from Southern Miss. He had fun—perhaps too much fun—as a member of Kappa Alpha fraternity. For example, during a KA Old South party, Dad rode a horse into the USM library. Dad is a life-long prankster, and his years at Southern Miss gave him plenty of opportunities for his jokes.

While attending USM, Dad met and married my mother, Janice Jefcoat. After that, the couple moved to New Orleans where Dad went to work as a petroleum geologist. Next, they moved to Tuscaloosa, AL so Dad could earn a master's degree in geology from the University of Alabama. He studied there at the height of Bear Bryant's reign and certainly didn't mind all the wins for Alabama. His next job, also as a petroleum geologist, was for Tenneco Oil Company in Lafayette, LA.

While living in Lafayette, Dad tamed a wild squirrel to eat pecans off of the top of his head. He named his little buddy Leroy. Dad also served as a Big Brother to an underprivileged boy before having a child of his own. I was born in Lafayette in 1974.

One month after my birth, Tenneco transferred Dad to Bakersfield, CA. During his time in California, Dad climbed to the summit of Mt. Whitney. The air at that altitude was thin and made breathing somewhat of a challenge, but he did it!

Dad's other pursuits outside of the office included teaching Sunday school to seniors in high school and earning an additional bachelor's degree in economics from Cal State.

California was the perfect place for Dad's adventurous spirit, but four years after moving there he accepted an offer to move to Jackson, MS. He worked for a couple of oil companies before becoming an independent wildcatter in 1982.

My parents divorced in 1980. A few years later, Dad married his current wife, Susan. He proposed by disguising her engagement ring as the prize in a box of Cracker Jacks. Susan has been a sweet stepmother to me and a good companion for Dad. Dad gained an eleven-year-old son, my stepbrother from his marriage, and he has been fully supportive of Brian.

And of course, for my entire life, Dad has been 100 percent devoted to me — way above and beyond an average father. Even though he's always kept an incredibly busy schedule — with late nights, sometimes overnights, and weekends spent at his office in downtown Jackson, MS — he has taken the time to attend every clumsy ballet recital and awkward school play of mine. I have sweet memories of beach trips, Disney trips, and skiing trips with Dad.

Some special moments I have with Dad include getting up in the middle of the night to view Haley's Comet through a telescope he gave me. I even got to help create one of

Dad's many inventions. Together, we designed a three-story feline fortress for our cat who was being bullied by the pet dog (appropriately named Brutus). The cat hideaway featured a plexiglass front and back and a spiral staircase.

Needless to say, when it was science fair time at school, I had the very best projects, thanks to my favorite scientist. Dad and I have been close for my entire life. To this day, he still treats me to lunch every weekend. We reflect on our all of our good times. I remember drawing at Dad's office as a child with his large collection of colored pencils. These were the days that geologists' maps were colored by hand; Petra and other industry software had not been developed.





MONTHLY POST

Bob Schneeflock

I remember being fascinated by watching the draftspeople with airbrushes detailing Dad's maps.

Dad's career skyrocketed in the late '80s and early '90s. He made some major oil and gas discoveries. The oil fever in one town caused by one of Dad's discoveries was even featured on Peter Jennings' World News Tonight. In 1990, Dad won the prestigious Wildcatter of the Year Award from the Mid Continent Oil and Gas Association. In 1991, his company, Paramount Petroleum, was the leading wildcatter in the United States. They drilled 50 wells that year. Chapter 21 in the book, *Drilling Ahead: The Quest for Oil in the Deep South 1945-2005*, by Alan Cockrell, is about Dad.

The oil business is known for its huge swings in successes and failures. Dad describes it by saying, "It will take you from the penthouse to the outhouse and back again." For all of his discoveries, he has drilled his fair share of dry holes. But Dad has loved every moment of the excitement and risk involved.

Exhilaration is not only limited to his career. Dad got his pilot's licence in 1987. He has owned and piloted a series of several airplanes. Dad used to work frequently in Houston, TX. He flew himself back and forth. His most recently owned planes had aerobatic capabilities. With these, Dad petrified some of his friends and had others using his on-board supply of sick sacks with his flips and loops through the air.



I cannot listen to the Kenny Loggins song *Danger Zone* without thinking of Dad. When not zooming through the air, Dad was ripping through the ocean at high speeds in a Miami Vice style boat. He rode his Harley Davidson motorcycle across the country. (Over his lifetime, Dad has visited all 50 states).

Susan presented Dad with his first Harley one year for his birthday at his office. Dad deafened the whole office building, including all of his own employees, by driving it in circles in the office atrium.

At its largest, Dad's company had around 100 employees. Dad always got a chuckle from leaving odd foods in the office breakroom to see what all his employees would eat. They actually cut into a raw turnip for a strange snack but refused to open a jar of pickled baby octopi that he left for them.

Office eats aren't Dad's only pranks with food. During a routine physical exam at a doctor's office, Dad fooled the nurse by secretly pouring apple juice into the urine sample cup and then drinking it in front of her. She was horrified as he casually stated, "It tastes alright to me." He slyly smiled. And then confessed.



In the brief moments that Dad wasn't working, he relished being silly as well as being serious. Dad developed impressive skills as a downhill skier. He has visited most of America's ski resorts and has decided that Aspen is his favorite.

One time, Dad shopped at a ski clothing outlet in Houston, Texas. They packaged their off-price skiwear in black garbage bags. Dad loaded these purchases onto his plane, and flew to Magee, MS in the middle of the night to check on a well he was drilling in that town. After Dad landed his plane, the police chief of Magee met him on the tiny runway and thought that he was making the best drug bust of his career. What a letdown! He was so disappointed to find that those black garbage bags in the back of the small plane only contained ski clothes.

In the mid to late '90s, Dad moved his office to a more casual setting in Ridgeland, wore T-shirts and shorts to work, and took his beloved Rottweiler, Babe, to work with him every



MONTHLY POST

Bob Schneeflock

day. His schedule has progressively become less hectic. Now Dad is consulting part time. He was recently honored with by the Mississippi Geological Society with their equivalent of a lifetime achievement award.

But even at 74 years old with diagnoses of Parkinson's disease and psoriatic arthritis, Dad rides a bicycle 6.5 miles per day, six days per week. There is no stopping him. And anyone near him should be aware. His next practical joke could happen at any moment to anyone.

I, as well as many extended family members and friends, truly love and admire this man. He has the ability to deliver an eloquent public speech or to carry on an entire conversation by talking and answering in puns. Dad has flown to high altitudes and scuba dived to great depths, but when he stands on level ground, it is with integrity. Dad has loved more with actions than with words. I have tried to find the end of his patience to no avail. He has earned the respect of oil industry legends from his unwavering honesty. Dad may give a rubber chicken, but then he'll add the shirt off his back. Dad is a character who *has* character. And I love him for it.



GEO LINK POST

USGS TAPESTRY OF TIME AND TERRAIN <http://tapestry.usgs.gov> The CCGS is donating to all of the 5th and 6th grade schools in the Coastal Bend. Check it out—it is a spectacular map. You might want a framed one for your own office. The one in my office has glass and a metal frame, and it cost \$400 and it does not look as good as the ones we are giving to the schools. Call Owen 510-6224 if you want one for your office for \$150. Duncan, Mike, Chris, Dave, Bob Randy, Seb., Kevin, Ken, Craig, Patrick, Robert.

FREE TEXAS TOPO'S <http://www.tnris.state.tx.us/digital.htm> these are TIFF files from your state government that can be downloaded and printed. You can add them to SMT by converting them first in Globalmapper. Other digital data as well.

FREE NATIONAL TOPO'S [http://store.usgs.gov/b2c_usgs/b2c/start/\(xcm=r3standardpitrex_prd\)/.do](http://store.usgs.gov/b2c_usgs/b2c/start/(xcm=r3standardpitrex_prd)/.do) go to this webpage and look on the extreme right side to the box titled TOPO MAPS DOWNLOAD TOPO MAPS FREE.

<http://www.geographynetwork.com/> Go here and try their top 5 map services. My favorite is 'USGS Elevation Date.' Zoom in on your favorite places and see great shaded relief images. One of my favorites is the Great Sand Dunes National Park in south central Colorado. Nice Dunes.

<http://antwrp.gsfc.nasa.gov/apod/astropix.html> Astronomy picture of the day — awesome. I click this page everyday.

<http://www.spacimaging.com/gallery/ioweek/iow.htm> Amazing satellite images. Check out the gallery.

<http://www.ngdc.noaa.gov/seg/topo/globegal.shtml> More great maps to share with kids and students.

www.geo.org Don't forget we have our own web page.

<http://micro.magneet.fsu.edu/primer/java/scienceoptiscu/owersof10/>

<http://asterweb.jpl.nasa.gov/galery/default.htm> Great satellite images of volcanoes

<http://terra.nasa.gov/gallery/> More here

www.ermapper.com They have a great free downloadable viewer for TIFF and other graphic files called ER Viewer.

www.drillinginfo.com This is an incredible (subscription) well and completion data service for independents. Can be demo'ed for free.

<http://terrasrver.com/> Go here to download free aerial photo images that can be plotted under your digital land and well data. Images down to 1 meter resolution, searchable by Lat Long coordinate. Useful for resolving well location questions.

<http://www.fs.fed.us/gpnf/volcanocams/msh/> This is a live cam of Mt. St. Helens refreshed every 5 minutes. At the bottom are old videos of past eruptions in this cycle. It is worth a watch especially now.



MGS HONORARY MEMBERS

Esther Applin*

Verne Culbertson *

David C. Harrell*

Dudley J. Hughes*

Walter P. Jones*

Winnie McGlammery*

Maurice E. Miesse*

Marvin E. Norman*

Thurston Connell Rader*

Henry Toler*

Charles H. Williams

David Cate

Bob Schneeflock

Paul Applin*

H. Leroy Francis*

Oleta R. Harrell*

Urban B. Hughes*

Harold Karges*

Thomas McGlothin*

Emil Monsour*

Marvin L. Oxley*

Baxter Smith*

H. Vaughn Watkins

Jerry Zoble

Stanley King

Lawrence F. Boland*

Jim Furrh*

Ralph Hines*

Wendell B. Johnson *

Wilbur H. Knight*

Frederic F. Mellen*

William H. Moore*

Richard R. Priddy*

Harry V. Spooner

Stewart W. Welch*

Julius Ridgeway

Dr. David T. Dockery III

*** deceased**

MEMBERSHIP APPLICATION / RENEWAL FORM

MISSISSIPPI GEOLOGICAL SOCIETY

P.O. BOX 422, JACKSON, MISSISSIPPI 39205-0422

2019-2020

Membership year is June through May

New Membership (\$20/yr)_____ Renewal (\$20/yr)_____ Student (FREE)_____ Associate (\$20/yr)_____

Boland Scholarship Fund Donation \$ _____ Total Amount Enclosed \$ _____

Last Name: _____ First: _____ MI: _____

Mailing Address: _____

Office Phone: _____ Home Phone: _____ FAX: _____

E-mail Address: _____

College/University Attended: _____

Degree(s) Obtained and Year(s) Awarded: _____

Professional Associations, Certifications, & Licenses: _____

MGS ADVERTISING ORDER FORM

September 2019 – May 2020

I. Bulletin Advertisements:

<u>Size</u>	<u>Rate/Year</u>	<u>Amt. Remitted</u>
Full Page Ad (6" x 8")	\$500	\$ _____
1/2 Page Ad (6" x 4")	\$300	\$ _____
1/4 Page Ad (3" x 4")	\$200	\$ _____
Business Card Ad (1 1/2" x 3")	\$100	\$ _____
Professional Listing (1/2" x 3")	\$ 50	\$ _____

II. Web Page Advertisements (www.missgeo.com):

<u>Type of Web Page Ad</u>	<u>Rate/Year</u>	<u>Amt. Remitted</u>
Front Page Sponsor (Banner Ad – limit of 5)	\$500	\$ _____
Second Page Banner Ad	\$250	\$ _____
Professional Listing/Link	\$100	\$ _____

(Note: Please contact Steve Walkinshaw at (601) 607-3227 or mail@visionexploration.com for details concerning placing your ad on the MGS web site.)

Total Remitted \$ _____

Please make checks payable to the Mississippi Geological Society. If you have any questions, contact Matt Caton at (601) 898-7444 or mcaton@tellusoperating.com



MGS PAST PRESIDENTS

1939-1940	Henry N. Toler	1973-1974	Larry Walter
1940-1941	Urban B. Hughes	1974-1975	W. E. "Gene" Taylor
1941-1942	J. Tom McGlothlin	1975-1976	Jerry E. Zoble
1942-1943	Dave C. Harrell	1976-1977	P. David Cate
1943-1944	K. K. "Bob" Spooner	1977-1978	Sarah Childress
1944-1945	L. R. McFarland	1978-1979	Les Aultman
1945-1946	J. B. Story	1979-1980	Philip R. Reeves
1946-1947	Frederic F. Mellen	1980-1981	Marshall Kern
1947-1948	H. Lee Spyres	1981-1982	Stephen Oivanki
	Robert D. Sprague	1982- 1983	James W. "Buddy" Twiner
1948-1949	Robert D. Sprague	1983- 1984	Charles H. Williams
1949-1950	E. T. "'Mike" Monsour	1984- 1985	C. Kip Ferns
1950-1951	J. Tate Clark	1985-1986	Steven S. Walkinshaw
	Charles E. Buck	1986-1987	J. R. "'Bob" White
1951-1952	George W. Field	1987-1988	Harry Spooner
1952-1953	James L. Md11in, Jr.	1988-1989	Stanley King
1953-1954	Wilbur H. Knight	1989-1990	Stan Galicki
1954-1955	A. Ed Blanton	1990-1991	E. James Files, Jr.
1955-1956	Gilbert A. Talley	1991-1992	Stephen L. Ingram, Sr.
1956-1957	Ben Ploch	1992-1993	Michael Noone/Stanley King
1957-1958	Emil Monsour	1993-1994	Brian Sims
1958-1959	Charles Brown	1994-1995	C. W. "Neil" Barnes
1959-1960	M. F. Kirby	1995-1996	Lester Aultman
1960-1961	Rudy Ewing	1996-1997	Jack S. Moody
1961-1962	Xavier M. Franscogna	1997-1998	George B. Vockroth
1962-1963	Robert B. Ross	1998-1999	Rick L. Ericksen
1963-1964	William A. Skees	1999-2000	Stanley King
	Marvin Oxley	2000-2001	John C. Marble
1964-1965	James F. Bollman	2001-2002	Andrew T. Sylte
1965-1966	Sankey L. Blanton	2002-2003	Aaron Lasker
1966-1967	Alan Jackson	2003-2004	John G. Cox
1967-1968	Julius M. Ridgway	2004-2005	James E. Starnes
1968-1969	Edward D. Minihan	2005-2006	Todd Hines
1969-1970	Kevin E. Cahill	2006-2007	Bob Schneeflock
1970-1971	John Lancaster	2007-2008	Tony Stuart
1971-1972	Larry Boland	2008-2009	Lisa Ivshin
1972-1973	Charles Barton	2009-2010	Joe Johnson
		2010-2011	Brian Sims
		2011-2012	Stanley King
		2012-2013	Jim Files
		2013-2014	Neil Barnes
		2014-2015	Ezat Heydari
		2015-2016	Jack Moody
		2016-2017	Cragin Knox
		2017-2018	David Hancock
		2018-2019	Dr. David Dockery