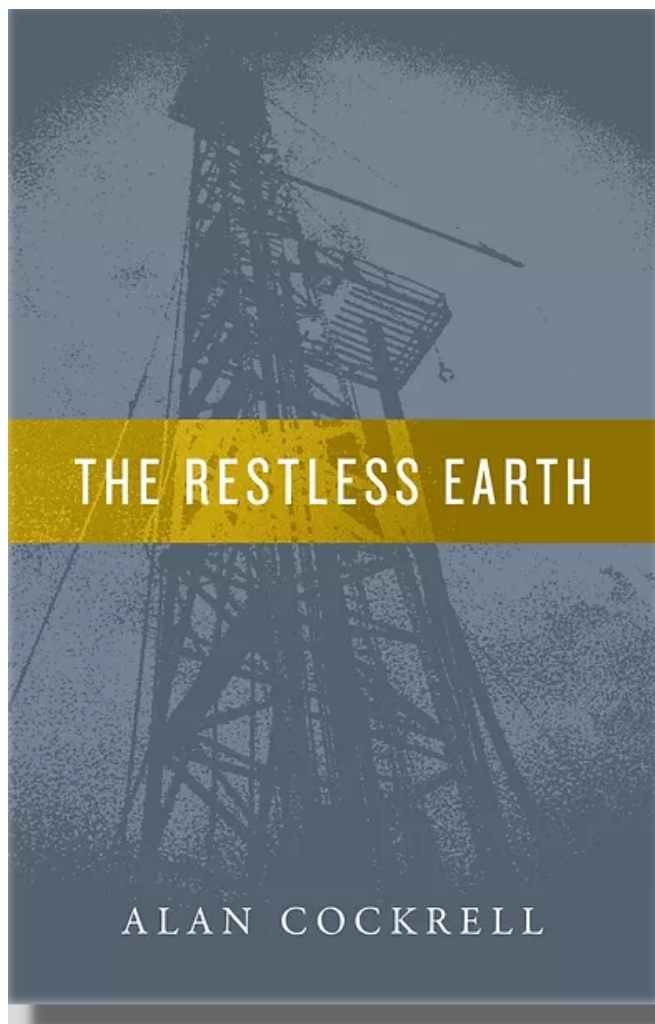


MISSISSIPPI GEOLOGICAL SOCIETY eBULLETIN

Volume 70

No. 9

May 2022



THE RESTLESS EARTH
A novel by Alan Cockrell

MONTHLY QUIZ
Steve Walkinshaw



www.missgeo.com



MGS 2021-2022 BOARD OF DIRECTORS

Officers

President	David Snodgrass	MDEQ	dsnodgrass@ogb.state.ms.us	(601) 576-4930
1st Vice President				
2nd Vice President				
Treasurer	Paul Parrish	MDEQ	pparrish@mdeq.ms.gov	(601) 961-5171
Webmaster	Steve Walkinshaw	Vision Exploration	steve@visionexploration.com	(601) 607-3227
Advertising	Matt Caton	Southern Energy	mcaton13@yahoo.com	(601) 416-8994
Editor	Matt Caton	Southern Energy	mcaton13@yahoo.com	(601) 416-8994

Boland Scholarship

President	David Snodgrass	MDEQ	dsnodgrass@ogb.state.ms.us	(601) 576-4930
Secretary	Neil Barnes	Strong Rock	Neil.barnes@strongrockenergy.com	
Members	Steve Walkinshaw	Vision Exploration	steve@visionexploration.com	(601) 607-3227
	Tony Stuart	Venture Oil & Gas		(601) 428-7725
	James Starnes	MDEQ		
	Bob Schneeflock	Geodigital Consulting		(601) 853-0701
	Dave Cate	Pruet Oil		

Honorary Membership

Members	Dave Cate		(601) 718-9397
	Vaughn Watkins		(601) 898-9347

MGS Representatives

AAPG	Maurice Birdwell	Independent	(601) 936-6939
GCAGS	Danny Harrelson	U.S. Army R&D	(601) 634-2685

Other

Environmental	John Ryan	Allen	(601) 936-4440
Historian	Stanley King	Independent	(601) 842-3539



PRESIDENT'S LETTER

David Snodgrass, MSOGB



Dear MGS Membership,

Unfortunately, we had to cancel our May luncheon. We will break for summer and pick back up in September with a luncheon and our annual BBQ.

Also, the AAPG House of Delegates will be meeting on June 12, 2022. The meeting will be dedicated to House business; voting on five proposed amendments to the AAPG By-laws, voting on approval of a new affiliated society and the election of House officers. Administrative and governmental reports will be presented later in the meeting, after conclusion of House business. As Mississippi's Delegate, I will be in attendance and will report back to you in July. I have served in this capacity for 2.5 years and am proud to have done so. However, if anyone would like the opportunity to act as Mississippi's Delegate to the AAPG, please reach out to me when you can (601-576-4930).

So please stay tuned and stay well. Many thanks for your continued support.

Sincerely,

David H. Snodgrass, RPG

MGS President

2021-2022 MGS MEETING SCHEDULE

When	What/Who	Where
September	Fall BBQ	Cancelled
October	Cancelled	Cancelled
November	TBD	Cancelled
December 8	SPE Distinguished Lecturer	Online - 11:30am
January	TBD	River Hills - 11:30am
February	David F. Allen Challenges and Solutions of Low Resistivity Pay	River Hills – 11:30am
March	TBD	River Hills – 11:30am
April 13	Geoff Salter The Role of Engineer and Why its Different from the Day Job - Scholarship Awards	River Hills - 11:30am
May 11	Cancelled	River Hills - 11:30

MILBIRD RESOURCES, LLC
Oil & Gas Exploration

Maurice N. Birdwell
Managing Partner
AAPG Certified Petroleum Geologist
Reg. Prof. Geol. Ark. La. Miss. Tex

2043 Oak Ridge Drive
Pearl, MS 39208

601.936.6939
mnbirdwell@comcast.net

JHM, LLC
OIL AND GAS EXPLORATION

Joe McDuff
Geologist

351 Chapel Loop
Mandeville, LA 70471

504.756.2000
jmcduff@att.net

[illegible]



THE RESTLESS EARTH

A novel by Alan Cockrell



WordCrafts
we tell stories

Novelist Alan Cockrell Unveils *The Restless Earth*, a Sweeping Historical Novel About the Discovery of Alabama's Only Super-Producing Oil Field.

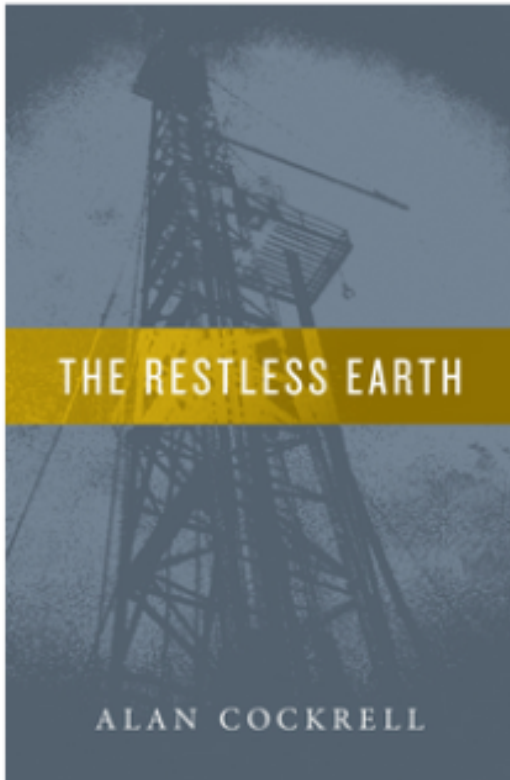
NASHVILLE, TN (April 14, 2022) - Author Alan Cockrell has unveiled his debut novel, *The Restless Earth*, a sweeping saga of the quest for black gold in Mid-20th Century southern Alabama. The novel released to retail on April 14, 2022, in hardback, trade paperback, and all major ebook formats from WordCrafts Press.

Set in the fictional town of Fossil Rim, Alabama, in the aftermath of World War II, *The Restless Earth* is a compelling literary novel about the drive, determination, unbridled enthusiasm, resilience, and downright stubbornness of a bygone species—the wildcatter. Love and loss, friendship and animosity, corrupt politicians and desperate citizens all jumble together as the possibility of an impending oil strike creates an explosive atmosphere that could ignite into a conflagration of biblical proportions.



THE RESTLESS EARTH

A novel by Alan Cockrell



Grady broke silence in a low, menacing tone. "You bought the Lampasas rig?"

Ethan nodded.

Grady leaned forward and looked squarely at Ethan.

"They didn't tell you?"

"Tell me what?"

Grady took a pack of cigarettes out of his shirt pocket and lit up. "Well," he muttered thoughtfully, smoke streaming from his gaping nostrils, "of course they wouldn't tell you. They wanted to get rid of that thing."

Ethan waited for the explanation that seemed slow coming.

"That rig's snake bit," he said out of the side of his mouth, the cigarette jumping in his lips as he spoke. "It's got bad luck. That damn thing's never drilled a single producer."

"Every company that owned that rig has gone out of business. Every hole it drilled was a duster."

He tapped the ashes off the end of his cigarette. "It had problems. Lots of 'em." He paused for a pull from the Pabst. The other men watched him and waited. "That damn thing stayed stuck more'n it drilled. I think it might have left more junked holes behind it than dry ones. Mechanical problems, too—mud pumps always breaking down. I know they went through three or four engines and put in a new draw-works."

He sniffed. "One time the cable snapped while they were raising the derrick. The whole shebang slammed down so hard it rattled windows for ten miles. And that's not all." He paused while they all stared at him. "A man got kilt on it. Derrick man. Fell. He hit right there on the drill floor in front of the driller and roughnecks. Splat!"

He paused. Ethan sensed he was allowing them all to form a picture in their minds of the ghastly scene.

"Like I said, that thing is snake bit."



THE RESTLESS EARTH

A novel by Alan Cockrell

"The opportunity to fashion a novel around actual events is one that comes around rarely, I think," muses author Alan Cockrell. "The culture of success vs. failure in the petroleum industry by individuals pursuing compelling dreams is fading. Modern workers and followers of the industry have little idea of the struggles of those who laid the groundwork for today's technological successes. As a petroleum geologist myself, I think they should know—and enjoy the knowing."

Cockrell embeds in the novel the not-so-subtle message that success is at the fingertips of those who are willing to work for it. But he also intimates that success rarely results from individual effort and determination alone. "Success almost always requires others to come into our lives with ideas, encouragement, and support," he notes. "The deep message is those helpers and enablers who pass through the success-seeker's life were sent his/her way by a Power higher than mere fate. The take-away is not the achievement of the success-seeker, but what he discovers inside of himself as a result of the success and the difference his success makes in the lives around him."

"Alan Cockrell is a skilled researcher and a compelling storyteller," said WordCrafts Press publisher, Mike Parker. "*The Restless Earth* was truly one of those novels I simply could not put down. Set in the turbulent mid-century era of unbound American optimism, the story will resonate with those who love tales of risk-takers, rugged individualists, and gamblers; but it will equally appeal to fans of historical drama, dastardly doings by unsavory characters, and even romantic suspense."

The Restless Earth is published in the US by [WordCrafts Press](#) and distributed globally by Ingram Content Group, the world's largest distributor of physical content.

Product Details

Hardback: 294 pages
Publisher: WordCrafts Press (March 22, 2022)
Language: English
ISBN-13: 978-1952474972
MSRP: \$32.99

Paperback: 308 pages
Publisher: WordCrafts Press (April 1, 2022)
Language: English
ISBN-13: 978-1952474989
MSRP: \$17.99

Ebook:
Publisher: WordCrafts Press (March 31, 2022)
Language: English
ASIN: B09X21TS22
ISBN-13: 979-8201016135
MSRP: \$5.99



CURRENT PRICES

Crude Oil WTI (NYM \$/bbl) Front Month

[+ WATCHLIST](#)

☀ OPEN

Last Updated: May 27, 2022 4:38 p.m. EDT - Delayed quote

\$ **115.18**

SETTLEMENT PRICE 05/26/2022

\$114.09

▲ 1.09 0.96%



Natural Gas Continuous Contract

[+ WATCHLIST](#)

☀ OPEN

Last Updated: May 27, 2022 4:38 p.m. EDT - Delayed quote

\$ **8.714**

SETTLEMENT PRICE 05/26/2022

\$8.895

▼ -0.181 -2.03%





GEOLOGY POST

THE RICHARD R. PRIDDY ENDOWMENT

HELP A STUDENT ATTEND SUMMER FIELD CAMP! The Richard R. Priddy Endowment has been created specifically to provide funding for students to attend Summer Field Camp. Field camp is required for all Millsaps Geoscience majors, and most scholarships typically do not cover these costs. The Endowment honors the late Dr. Richard Priddy who was Chair of the Millsaps Department of Geology from 1946 to 1972.

Gifts are tax-deductible. Checks can be made out to Millsaps College with Richard R. Priddy Endowed Scholarship Fund in the memo and mailed to:

Millsaps College
Office of Institutional Advancement
1701 N. State Street
Jackson, MS 39201

You can also donate online to
www.mbench.org/annualfund. Under *Area of Support*
please check *Other* and in the *Note* field enter Richard R.
Priddy Endowed Scholarship Fund.



Dr. Richard R. Priddy

This solicitation is submitted by Millsaps Geoscience alumni, Rev. Torrey Curtis ('67), Steve Franks ('68), Wayne Upchurch ('68), Clayton Breland ('70), and David Williamson ('72). We are not official representatives of Millsaps College.



GEOLOGY POST

ARTICLES, PAPERS or NEWS?

ATTENTION!!!!!! Industry, Professors and Students:

I am looking for more content from the industry and our schools.

Submissions can include anything from professional papers, thesis abstracts, job opportunities to pictures. Anything!!!!

If you have any information or news you would like to share with the Society **PLEASE** email them to the MGS Editor at:

mcaton13@yahoo.com

Thanks & Regards,

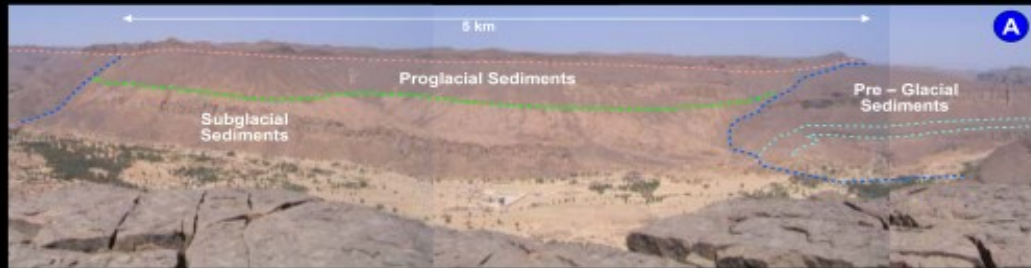
Matt Caton
Editor



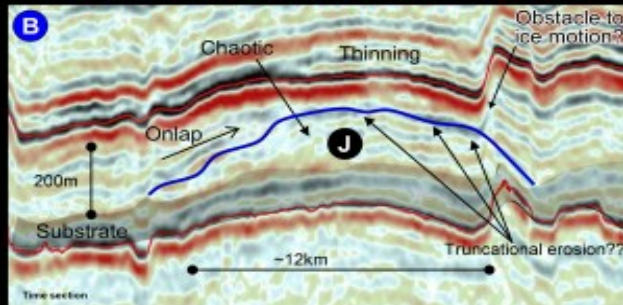
MONTHLY QUIZ

Steve Walkinshaw

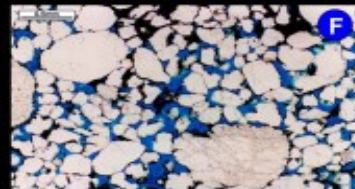
OUTCROP SHOWING PRE-GLACIAL, SUB-GLACIAL, AND PROGLACIAL SEDIMENTS



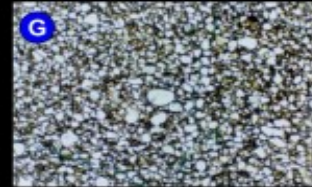
3D LINE ILLUSTRATING SEDIMENT "PILE-UP"



THIN SECTION - SUBGLACIAL SEDIMENTS (GOOD P&P)



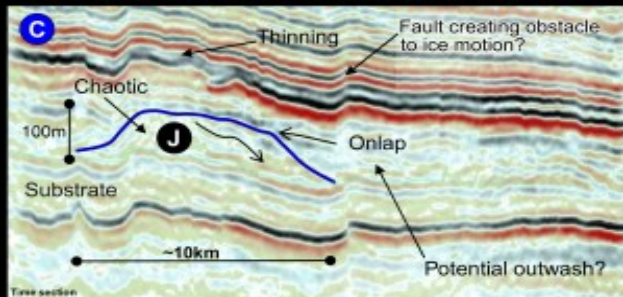
SUBGLACIAL SEDIMENTS (FAIR P&P)



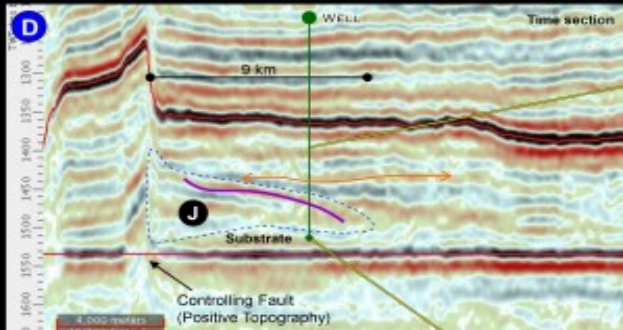
SUBGLACIAL SEDIMENTS (POOR P&P)



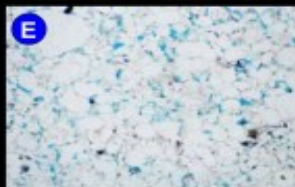
3D LINE ILLUSTRATING SEDIMENT "PILE-UP"



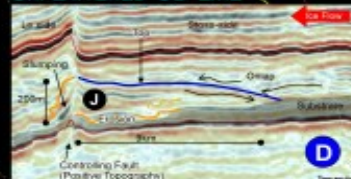
FLATTENED 3D LINE ILLUSTRATING SEDIMENT "PILE-UP"



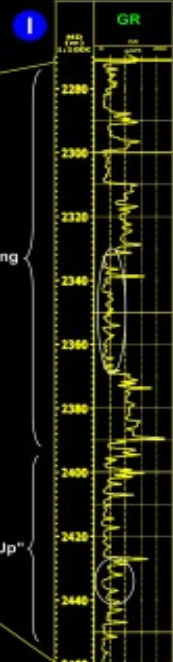
THIN SECTION - PROGLACIAL SEDIMENTS (GOOD P&P)



UNFLATTENED 3D LINE



GR Log - Well



FULL CREDIT FOR THE SOURCE OF THESE IMAGES TO BE PROVIDED ONCE THE QUIZ HAS BEEN SOLVED



MONTHLY QUIZ

Steve Walkinshaw

Oil patch quiz time. Studies of seismic data and outcrops of glacial sediments have indicated a "pile-up" of sediments often forms where still-stands during ice sheet retreat across polar shelves allow sediments to build up at the grounding zone. These buildups (labeled "J"), often associated with low areas or proximity to basement faults, can form prolific oil and gas reservoirs.

Such reservoirs are prime subsurface targets in a certain area. The data shown is from a Paleozoic basin in a country that, during Paleozoic time, straddled the South Pole. This time coincided with the greatest mass extinction of marine life.

The internal architecture of such large buildups typically exhibits basal downlap and chaotic facies.

Questions...

Part 1: What are these buildups called (3 words)?

Part 2: What period of time in the Paleozoic era am I referring to? (x-y)

Part 3: In what 2 countries do such deposits produce?

Part 4: What was the direction (current-day orientation) of the ice retreat in those 2 countries?

Part 5: What's the principal difference between these deposits and most Holocene analogs?

Part 6: What does the orientation of such deposits indicate?

ANSWERS AT BACK OF BULLETIN

GEO LINK POST

USGS TAPESTRY OF TIME AND TERRAIN <http://tapestry.usgs.gov> The CCGS is donating to all of the 5th and 6th grade schools in the Coastal Bend. Check it out—it is a spectacular map. You might want a framed one for your own office. The one in my office has glass and a metal frame, and it cost \$400 and it does not look as good as the ones we are giving to the schools. Call Owen 510-6224 if you want one for your office for \$150. Duncan, Mike, Chris, Dave, Bob Randy, Seb., Kevin, Ken, Craig, Patrick, Robert.

FREE TEXAS TOPO'S <http://www.tnris.state.tx.us/digital.htm> these are TIFF files from your state government that can be downloaded and printed. You can add them to SMT by converting them first in Globalmapper. Other digital data as well.

FREE NATIONAL TOPO'S [http://store.usgs.gov/b2c_usgs/b2c/start/\(xcm=r3standardpitrex_prd\)/.do](http://store.usgs.gov/b2c_usgs/b2c/start/(xcm=r3standardpitrex_prd)/.do) go to this webpage and look on the extreme right side to the box titled TOPO MAPS DOWNLOAD TOPO MAPS FREE.

<http://www.geographynetwork.com/> Go here and try their top 5 map services. My favorite is 'USGS Elevation Date.' Zoom in on your favorite places and see great shaded relief images. One of my favorites is the Great Sand Dunes National Park in south central Colorado. Nice Dunes.

<http://antwrp.gsfc.nasa.gov/apod/astropix.html> Astronomy picture of the day — awesome. I click this page everyday.

<http://www.spacimaging.com/gallery/ioweek/iow.htm> Amazing satellite images. Check out the gallery.

<http://www.ngdc.noaa.gov/seg/topo/globegal.shtml> More great maps to share with kids and students.

www.geo.org Don't forget we have our own web page.

<http://micro.magneet.fsu.edu/primer/java/scienceoptiscu/owersofl0/>

<http://asterweb.jpl.nasa.gov/galery/default.htm> Great satellite images of volcanoes

<http://terra.nasa.gov/gallery/> More here

www.ermapper.com They have a great free downloadable viewer for TIFF and other graphic files called ER Viewer.

www.drillinginfo.com This is an incredible (subscription) well and completion data service for independents. Can be demo'ed for free.

<http://terraserver.com/> Go here to download free aerial photo images that can be plotted under your digital land and well data. Images down to 1 meter resolution, searchable by Lat Long coordinate. Useful for resolving well location questions.

<http://www.fs.fed.us/gpnmf/volcanocams/msh/> This is a live cam of Mt. St. Helens refreshed every 5 minutes. At the bottom are old videos of past eruptions in this cycle. It is worth a watch especially now.



MGS HONORARY MEMBERS

Esther Applin*

Verne Culbertson *

David C. Harrell*

Dudley J. Hughes*

Walter P. Jones*

Winnie McGlammery*

Maurice E. Miesse*

Marvin E. Norman*

Thurston Connell Rader*

Henry Toler*

Charles H. Williams *

David Cate

Bob Schneeflock

Paul Applin*

H. Leroy Francis*

Oleta R. Harrell*

Urban B. Hughes*

Harold Karges*

Thomas McGlothin*

Emil Monsour*

Marvin L. Oxley*

Baxter Smith*

H. Vaughn Watkins

Jerry Zoble

Stanley King

Paul Day*

Lawrence F. Boland*

Jim Furrh*

Ralph Hines*

Wendell B. Johnson *

Wilbur H. Knight*

Frederic F. Mellen*

William H. Moore*

Richard R. Priddy*

Harry V. Spooner

Stewart W. Welch*

Julius Ridgeway *

Dr. David T. Dockery III

*** deceased**

MEMBERSHIP APPLICATION / RENEWAL FORM

MISSISSIPPI GEOLOGICAL SOCIETY

P.O. BOX 422, JACKSON, MISSISSIPPI 39205-0422

2021-2022

Membership year is June through May

New Membership (\$20/yr)____ Renewal (\$20/yr)____ Student (FREE)____ Associate (\$20/yr)____

Boland Scholarship Fund Donation \$ _____ Total Amount Enclosed \$ _____

Last Name: _____ First: _____ MI: _____

Mailing Address: _____

Office Phone: _____ Home Phone: _____ FAX: _____

E-mail Address: _____

College/University Attended: _____

Degree(s) Obtained and Year(s) Awarded: _____

Professional Associations, Certifications, & Licenses: _____

MGS ADVERTISING ORDER FORM

September 2021 – May 2022

I. Bulletin Advertisements:

<u>Size</u>	<u>Rate/Year</u>	<u>Amt. Remitted</u>
Full Page Ad (6" x 8")	\$500	\$ _____
1/2 Page Ad (6" x 4")	\$300	\$ _____
1/4 Page Ad (3" x 4")	\$200	\$ _____
Business Card Ad (1 1/2" x 3")	\$100	\$ _____
Professional Listing (1/2" x 3")	\$ 50	\$ _____

II. Web Page Advertisements (www.missgeo.com):

<u>Type of Web Page Ad</u>	<u>Rate/Year</u>	<u>Amt. Remitted</u>
Front Page Sponsor (Banner Ad – limit of 5)	\$500	\$ _____
Second Page Banner Ad	\$250	\$ _____
Professional Listing/Link	\$100	\$ _____

(Note: Please contact Steve Walkinshaw at (601) 607-3227 or mail@visionexploration.com for details concerning placing your ad on the MGS web site.)

Total Remitted \$ _____

Please make checks payable to the Mississippi Geological Society. If you have any questions, contact Matt Caton at (601) 898-7444 or mcaton@tellusoperating.com



MGS PAST PRESIDENTS

1939-1940	Henry N. Toler	1980-1981	Marshall Kern
1940-1941	Urban B. Hughes	1981-1982	Stephen Oivanki
1941-1942	J. Tom McGlothlin	1982- 1983	James W. "Buddy" Twiner
1942-1943	Dave C. Harrell	1983- 1984	Charles H. Williams
1943-1944	K. K. "Bob" Spooner	1984- 1985	C. Kip Ferns
1944-1945	L. R. McFarland	1985-1986	Steven S. Walkinshaw
1945-1946	J. B. Story	1986-1987	J. R. ""Bob" White
1946-1947	Frederic F. Mellen	1987-1988	Harry Spooner
1947-1948	H. Lee Spyres/Robert D. Sprague	1988-1989	Stanley King
1948-1949	Robert D. Sprague	1989-1990	Stan Galicki
1949-1950	E. T. ""Mike" Monsour	1990-1991	E. James Files, Jr.
1950-1951	J. Tate Clark/ Charles E. Buck	1991-1992	Stephen L. Ingram, Sr.
1951-1952	George W. Field	1992-1993	Michael Noone/Stanley King
1952-1953	James L. Md11in, Jr.	1993-1994	Brian Sims
1953-1954	Wilbur H. Knight	1994-1995	C. W. "Neil" Barnes
1954-1955	A. Ed Blanton	1995-1996	Lester Aultman
1955-1956	Gilbert A. Talley	1996-1997	Jack S. Moody
1956-1957	Ben Ploch	1997-1998	George B. Vockroth 1957-
1958	Emil Monsour	1998-1999	Rick L. Ericksen
1958-1959	Charles Brown	1999-2000	Stanley King
1959-1960	M. F. Kirby	2000-2001	John C. Marble
1960-1961	Rudy Ewing	2001-2002	Andrew T. Sylte
1961-1962	Xavier M. Franscogna	2002-2003	Aaron Lasker
1962-1963	Robert B. Ross	2003-2004	John G. Cox
1963-1964	William A. Skees /Marvin Oxley	2004-2005	James E. Starnes
1964-1965	James F. Bollman	2005-2006	Todd Hines
1965-1966	Sankey L. Blanton	2006-2007	Bob Schneeflock
1966-1967	Alan Jackson	2007-2008	Tony Stuart
1967-1968	Julius M. Ridgway	2008-2009	Lisa Ivshin
1968-1969	Edward D. Minihan	2009-2010	Joe Johnson
1969-1970	Kevin E. Cahill	2010-2011	Brian Sims
1970-1971	John Lancaster	2011-2012	Stanley King
1971-1972	Larry Boland	2012-2013	Jim Files
1972-1973	Charles Barton	2013-2014	Neil Barnes
1973-1974	Larry Walter	2014-2015	Ezat Heydari
1974-1975	W. E. "Gene" Taylor	2015-2016	Jack Moody
1975-1976	Jerry E. Zoble	2016-2017	Cragin Knox
1976-1977	P. David Cate	2017-2018	David Hancock
1977-1978	Sarah Childress	2018-2019	Dr. David Dockery
1978-1979	Les Aultman	2019-2020	James O. Sparks
1979-1980	Philip R. Reeves	2020-2021	David Snodgrass



MONTHLY QUIZ

Steve Walkinshaw

ANSWERS

Part 1: What are these buildups called (3 words)? grounding-zone wedges

Part 2: What period of time in the Paleozoic era am I referring to? (x-y) Late Cambrian - Ordovician

Part 3: In what 2 countries do such deposits produce? Algeria and Libya

Part 4: What was the direction (current-day orientation) of the ice retreat in those 2 countries? north to south

Part 5: What's the principal difference between these deposits and most Holocene analogs? the Paleozoic ice sheets of North Africa were intracratonic; most modern analogs are not

Part 6: What does the orientation of such deposits indicate? the direction of ice retreat

Part 7: What sets the cited mass extinction event apart from the other 4 greatest mass extinction events? in the 2nd paragraph, I refer to the greatest mass extinction of marine life, which occurred during the Ordovician–Silurian extinction event; the Ordovician–Silurian extinction event is the only one of the 5 greatest mass extinction events that coincides with a well-known, significant period of glaciation.