

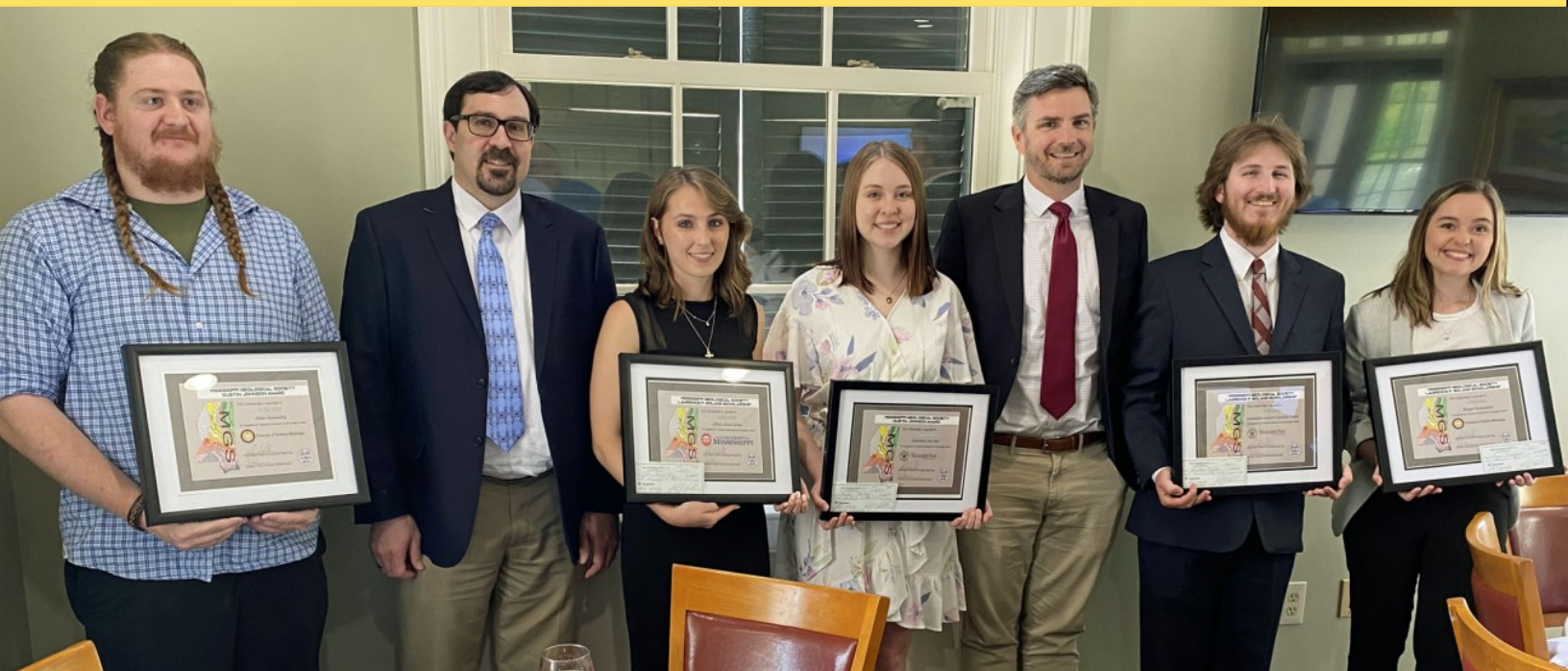
MISSISSIPPI GEOLOGICAL SOCIETY

eBULLETIN

Volume 70

No. 8

April 2022



MILLSAPS
COLLEGE



MISSISSIPPI
STATE



SCHOLARSHIP AWARD WINNERS

MAPPING GEOLOGY ACROSS STATE LINES

David T. Dockery III, RPG

JOHATHAN R. LEARD, RPG

Divisional Chairman of the Mississippi Academy of Sciences

MONTHLY QUIZ

Steve Walkinshaw



www.missgeo.com



MGS 2021-2022 BOARD OF DIRECTORS

Officers

President	David Snodgrass	MDEQ	dsnodgrass@ogb.state.ms.us	(601) 576-4930
1st Vice President				
2nd Vice President				
Treasurer	Paul Parrish	MDEQ	pparrish@mdeq.ms.gov	(601) 961-5171
Webmaster	Steve Walkinshaw	Vision Exploration	steve@visionexploration.com	(601) 607-3227
Advertising	Matt Caton	Southern Energy	mcaton13@yahoo.com	(601) 416-8994
Editor	Matt Caton	Southern Energy	mcaton13@yahoo.com	(601) 416-8994

Boland Scholarship

President	David Snodgrass	MDEQ	dsnodgrass@ogb.state.ms.us	(601) 576-4930
Secretary	Neil Barnes	Strong Rock	Neil.barnes@strongrockenergy.com	
Members	Steve Walkinshaw	Vision Exploration	steve@visionexploration.com	(601) 607-3227
	Tony Stuart	Venture Oil & Gas		(601) 428-7725
	James Starnes	MDEQ		
	Bob Schneeflock	Geodigital Consulting		(601) 853-0701
	Dave Cate	Pruet Oil		

Honorary Membership

Members	Dave Cate			(601)718-9397
	Vaughn Watkins			(601) 898-9347

MGS Representatives

AAPG	Maurice Birdwell	Independent		(601) 936-6939
GCAGS	Danny Harrelson	U.S. Army R&D		(601) 634-2685

Other

Environmental	John Ryan	Allen		(601) 936-4440
Historian	Stanley King	Independent		(601) 842-3539



PRESIDENT'S LETTER

David Snodgrass, MSOGB



Dear MGS Membership,

I would like to congratulate all of Boland Scholarship and Dustin Johnson Award selectees. The winners were by selected from among outstanding students nominated by their departments at Millsaps College, Mississippi State University, University of Southern Mississippi, and the University of Mississippi. We are very proud of your accomplishments and wish for you a wonderful and fulfilling future.

We are still on track to have our 11:30 am luncheon meetings at the River Hills Club in May, with Jamie Harris, PhD. We will provide more details about his talk prior to the luncheon. Afterwards, we will break for summer and pick back up in September with a luncheon and our annual BBQ. So please stay tuned and stay well. Many thanks for your continued support.

Sincerely,

David H. Snodgrass, RPG

MGS President



BOLAND SCHOLARSHIP AWARDS

Congratulations to this years Boland winners!



Johnathan Tindle, Mississippi State University



BOLAND SCHOLARSHIP AWARDS

Congratulations to this years Boland winners!



Jillian Dees, University of Mississippi



BOLAND SCHOLARSHIP AWARDS

Congratulations to this years Boland winners!



THE UNIVERSITY OF
SOUTHERN
MISSISSIPPI



Ginger Trochesset, University of Southern Mississippi



BOLAND SCHOLARSHIP AWARDS

Congratulations to this years Boland winners!

**MILLSAPS
COLLEGE**



Grant Burke, Millsaps College



DUSTIN JOHNSON AWARD

Congratulations to this years Dustin Johnson winners!



Kourtney McNatt, Mississippi State University



DUSTIN JOHNSON AWARD

Congratulations to this years Dustin Johnson winners!



Seth Andrew Kumming, University of Southern Mississippi



CURRENT PRICES

Marketwatch

Crude Oil WTI (NYM \$/bbl) Front Month

[+ WATCHLIST](#)

☀ OPEN

Last Updated: Apr 19, 2022 at 2:31 p.m. EDT - Delayed quote

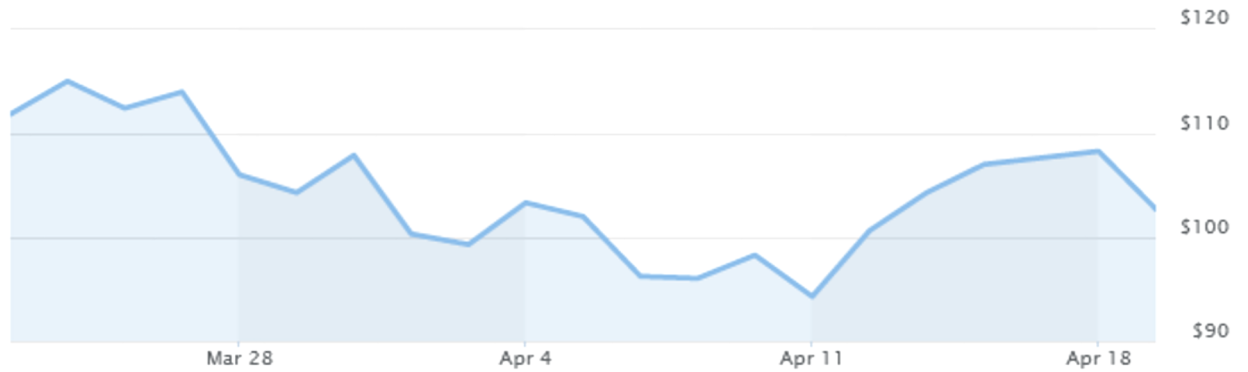
\$ **102.66**

SETTLEMENT PRICE 04/18/2022

\$108.21

▼ -5.55 -5.13%

< Advanced Charting 1M ▼ \$ % VOL



Natural Gas Continuous Contract

[+ WATCHLIST](#)

☀ OPEN

Last Updated: Apr 19, 2022 at 2:32 p.m. EDT - Delayed quote

\$ **7.19**

SETTLEMENT PRICE 04/18/2022

\$7.820

▼ -0.63 -8.06%

< Advanced Charting 1M ▼ \$ % VOL





MONTHLY POST

David T. Dockery III, RPG

MAPPING GEOLOGY ACROSS STATE LINES

The U.S. Geological Survey FY2020 National Geologic Map Database (NGMDB) provides an opportunity to integrate a geologic map for the nation by addressing stratigraphic correlation and nomenclature issues across state geologic map boundaries. Task 6 under the US GeoFramework (previously, the NGMDB Phase Three Initiative) addresses the establishment of working groups of regional experts from state geological surveys, the USGS, and academic institutions to facilitate stratigraphic correlation and reconciliation of nomenclature between states. The Geological Survey of Alabama was awarded grant funding to coordinate an East Gulf Coastal Plain Stratigraphic Working Group to develop a consistent regional nomenclatural framework for the state of Mississippi, Alabama, and Florida. MDEQ Office of Geology is funded through this grant to help make a common geologic map for the three-state region.

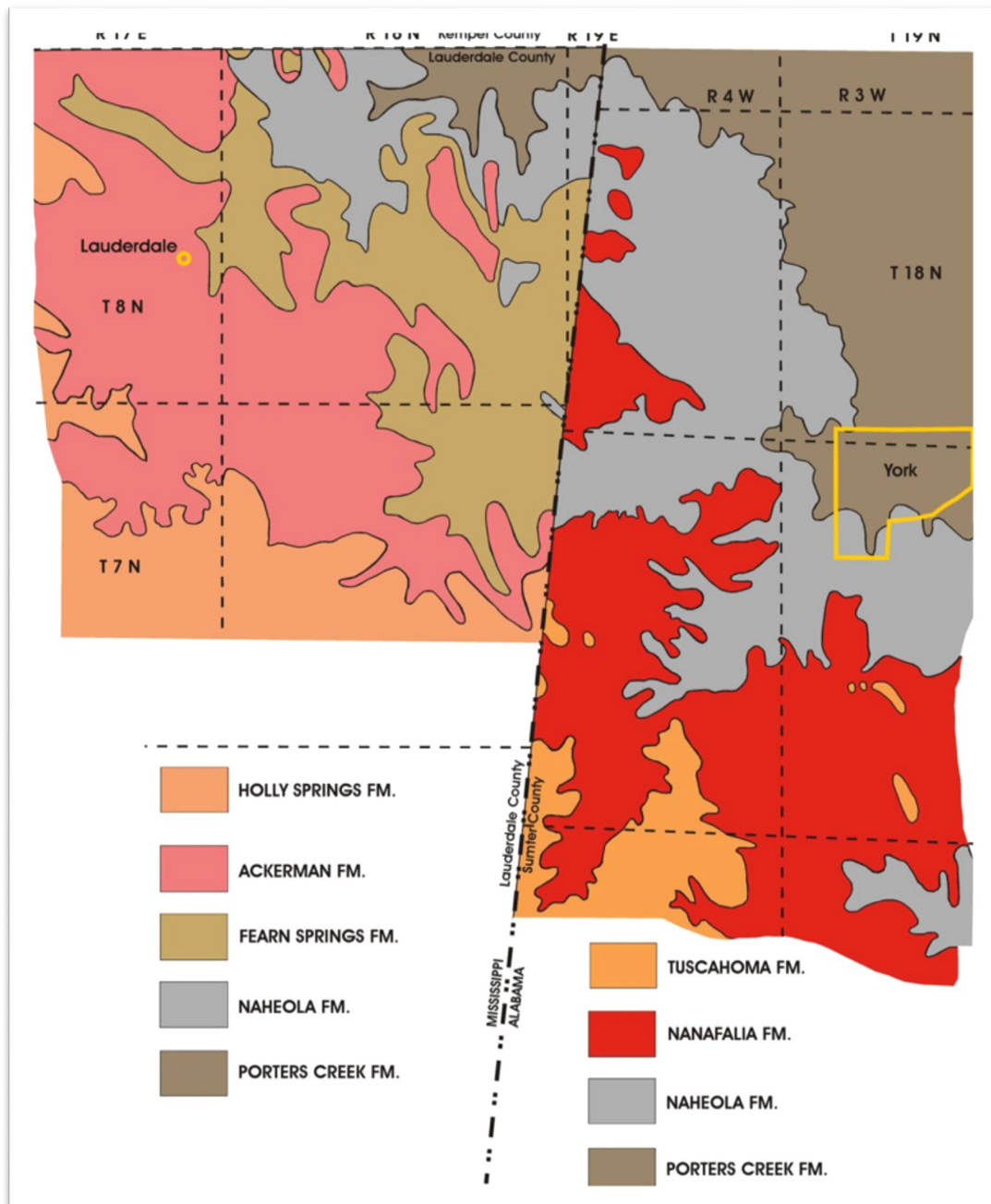
Mississippi got a jump start on this process in 1989 with funding from the USGS COGEOMAP grant to map the geology of the Wilcox Group from Alabama into Mississippi. On February 21, 1989, a MISGEOMAP conference was held in Jackson to discuss geologic mapping needs among the map makers and users. The 42 in attendance represented the Mississippi Bureau of Geology, Mississippi Bureau of Land and Water Resources, Mississippi Bureau of Pollution Control, Geological Survey of Alabama, Arkansas Geological Commission, Louisiana Geological Survey, Tennessee Division of Geology, U.S. Geological Survey (Reston, Virginia, headquarters), U.S. Environmental Protection Agency, University of Mississippi, Mississippi State University, University of Southern Mississippi, Millsaps College, U.S. Army Corps of Engineers, Waterways Experiment Station (Vicksburg), U.S.D.A. Soil Service Conservation, Mississippi Mineral Resources Institute, Mississippi Forestry Commission, U.S. Forest Service, U.S. Bureau of Land Management, and Gulf Coast Research Laboratory. COGEOMAP was replaced in 1994 with U.S. STATEMAP grants for 7.5-minute geologic quadrangle mapping.



MONTHLY POST

David T. Dockery III, RPG

The Proceedings of the 1989 MISGEOMAP Conference were published in 1990 in MDEQ Bureau of Geology Circular 3. An article of the publication on *A Revision of the Fearn Springs Formation and Relocation of the Midway-Wilcox Group Boundary in Mississippi* recognized the “state-line fault” at the Mississippi-Alabama line in the Midway and Wilcox groups. Figure 1 shows the Lauderdale County, Mississippi, geological map joined with the Sumter County, Alabama, geologic map.



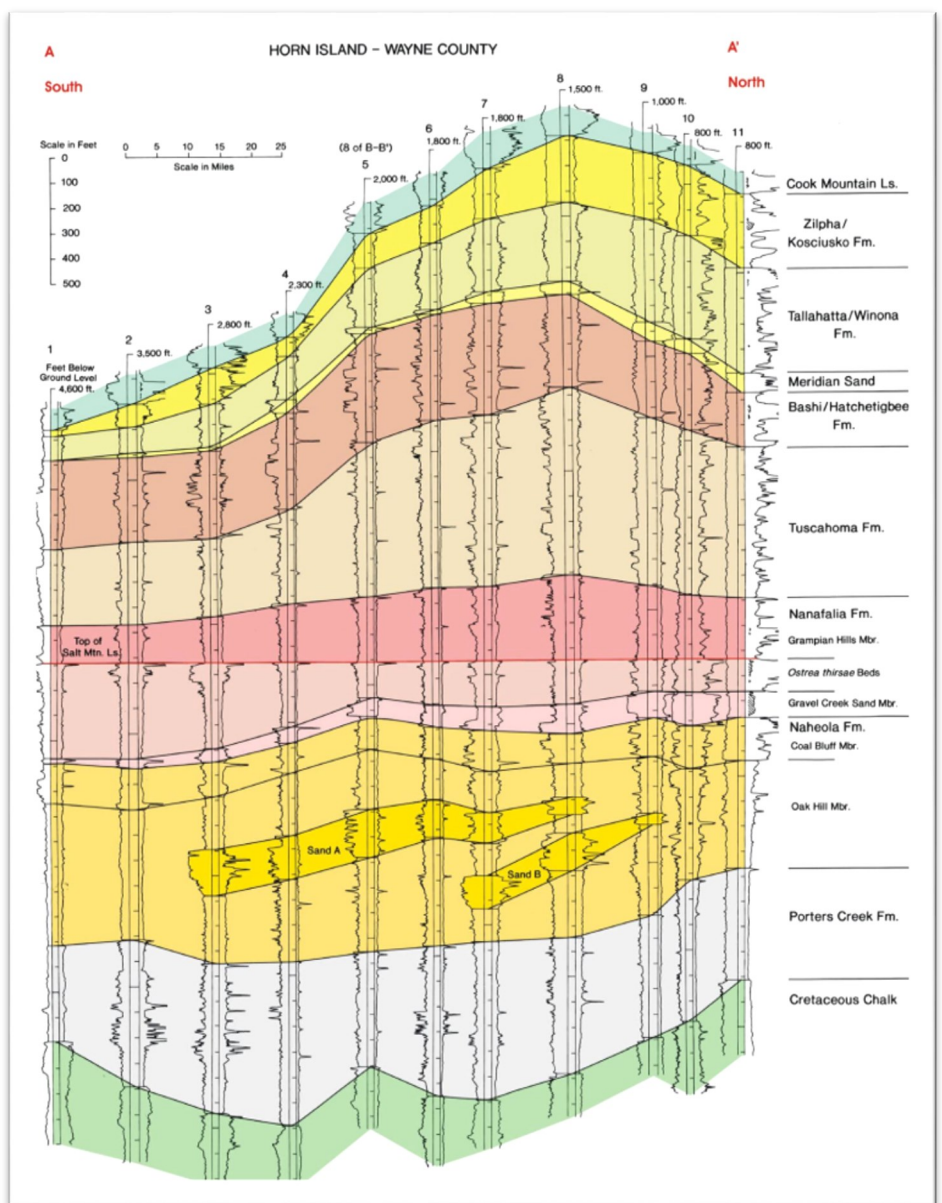
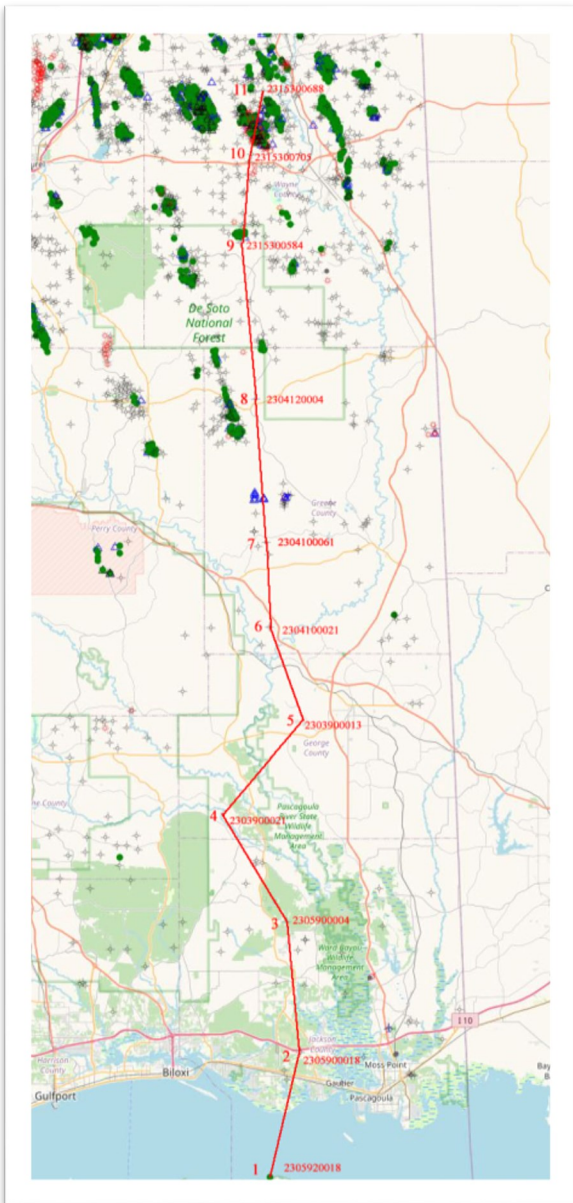


MONTHLY POST

David T. Dockery III, RPG

Such Mississippi provincial formation names such as the Fearn Springs, Akerman, and Holly Springs formations were dropped in favor of carrying the Classic Midway and Wilcox units (Tusahoma, Nanafalia, and Naheola formations), of Alabama into Mississippi. The Alabama formations had geologic-age-diagnostic fossils, while the Mississippi formations did not. This latter stratigraphy was mapped by David Thompson, quadrangle by quadrangle, to the Tennessee line and mapped into the subsurface of Mississippi by Dockery (2001).

Figure 2 locates one of the subsurface correlations, and Figure 3 shows the cross section.

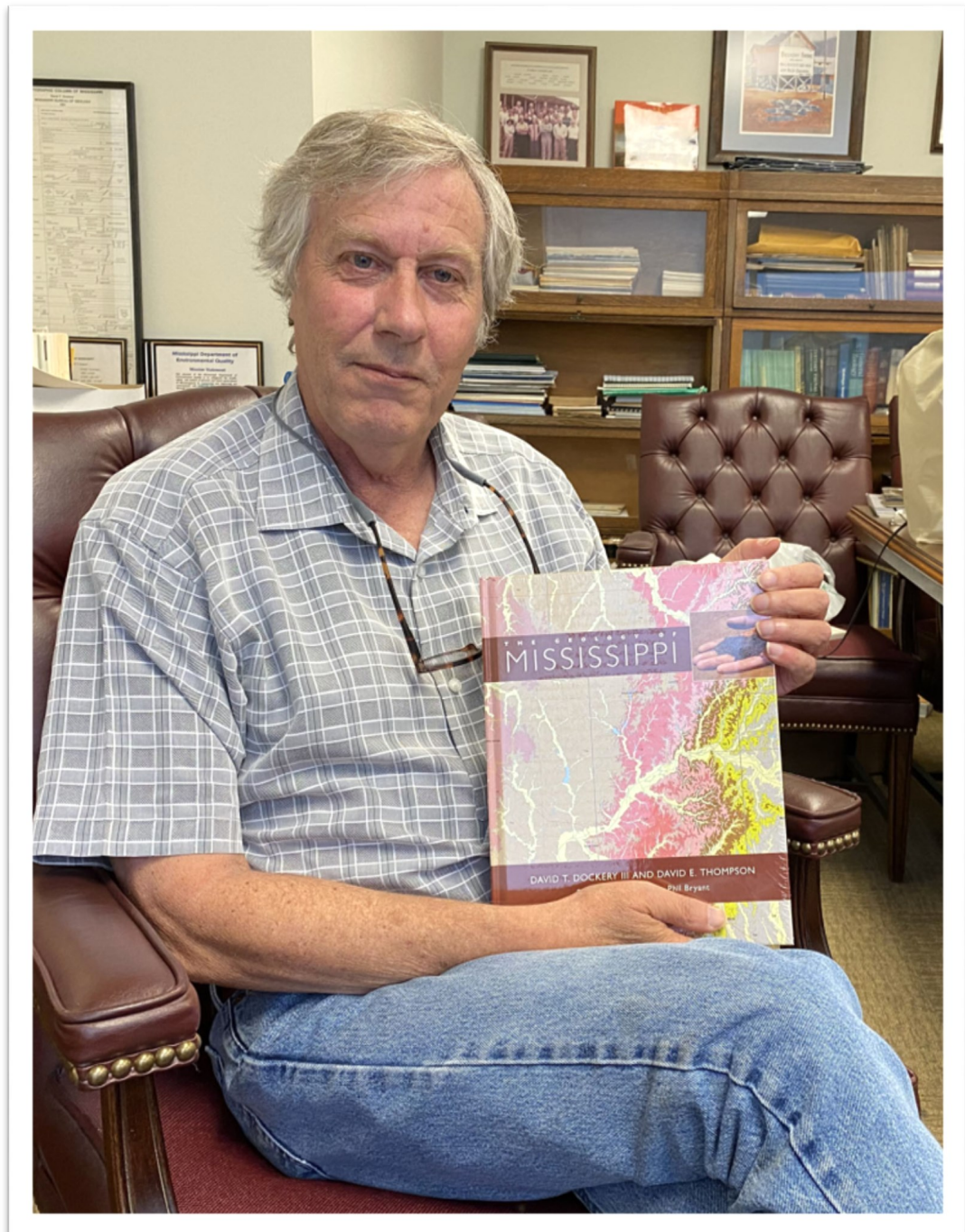




MONTHLY POST

David T. Dockery III, RPG

Working with me on state line geologic reconciliations is Greg Guthrie of the Geologic Survey of Alabama. Our first meeting was at my office on April 12, 2022. Figure 4 shows Greg at that meeting, holding our book on *The Geology of Mississippi*.





GEOLOGY POST

THE RICHARD R. PRIDDY ENDOWMENT

HELP A STUDENT ATTEND SUMMER FIELD CAMP! The Richard R. Priddy Endowment has been created specifically to provide funding for students to attend Summer Field Camp. Field camp is required for all Millsaps Geoscience majors, and most scholarships typically do not cover these costs. The Endowment honors the late Dr. Richard Priddy who was Chair of the Millsaps Department of Geology from 1946 to 1972.

Gifts are tax-deductible. Checks can be made out to Millsaps College with Richard R. Priddy Endowed Scholarship Fund in the memo and mailed to:

Millsaps College
Office of Institutional Advancement
1701 N. State Street
Jackson, MS 39201

You can also donate online to www.mbench.org/annualfund. Under *Area of Support* please check *Other* and in the *Note* field enter Richard R. Priddy Endowed Scholarship Fund.



Dr. Richard R. Priddy

This solicitation is submitted by Millsaps Geoscience alumni, Rev. Torrey Curtis ('67), Steve Franks ('68), Wayne Upchurch ('68), Clayton Breland ('70), and David Williamson ('72). We are not official representatives of Millsaps College.



MISSISSIPPI ACADEMY OF SCIENCES

Jonathan R. Leard, RPG



Mississippi Academy of Sciences

Geology and Geography Division

86th Annual Meeting, March 31 – April 1, 2022

Mississippi Gulf Coast Convention Center

2350 Beach Blvd, Biloxi, MS 39531

Abstract Deadline Extended to December 15th, 2021

We are soliciting presentations on any earth science topic including geology, geography, GIS, paleontology, hydrology, meteorology, geological/geotechnical/environmental/water resources engineering, and environmental science.

To submit, go to <https://msacad.org/submit-an-abstract>

Dr. Ezat Heydari will Keynote on his research with the Mars Rover!

Cash awards for 1st (\$100), 2nd (\$75), and 3rd (\$50) place undergraduate and graduate student presentations, thanks to the generous support of the Mississippi Geological Society.



Contact Jonathan Leard (jleard@mdeq.ms.gov; Division Chair) or Claire Babineaux (claireb@ngi.msstate.edu; Vice Chair)



MISSISSIPPI ACADEMY OF SCIENCES

The Mississippi Academy of Sciences has been a venue for the exchange of geologic knowledge in Mississippi since the inaugural meeting at Ole Miss, the home of the Mississippi Geological Survey at the time, in 1939. This first MAS meeting was on March 10-11, 1939, in the Science and Chemistry-Pharmacy buildings of the University of Mississippi. The Academy consisted of three divisions: (Division I) Biological Sciences, (II) Earth Sciences, and (III) Physical Sciences. The Earth Sciences Division included five papers given by Mississippi Geological Survey staff: (1) Observations on the Midway Group by Dr. Louis C. Conant, (2) Minerals Survey and (3) the Geology of Florida by Dr. W. C. Morse (Survey Director), (4) The contact of the Jackson and Vicksburg Formations by Frederic F. Mellen, and (5) Observations on the Tertiary of Mindanao, Philippine Islands by Glen F. Brown. Also presenting was Dr. Thomas E. McCutcheon, who wrote "County Mineral Resources Tests" sections from for the Survey's early county geology bulletins, beginning with the first county geology bulletin, MGS Bulletin 38 on Winston County in 1939 to MGS Bulletin 57 on Monroe County in 1943. His paper was on "Alterations in Clay During Burning." It should also be noted that Glen Francis Brown was known for his groundwater publications with the Survey, including Bulletin 60 on the *Geology and Groundwater Resources of the Coastal Area in Mississippi* published in 1944 and Bulletin 65 on the *Geology and Artesian Water of the Alluvial Plain in Northwestern Mississippi* published in 1947.

The Mississippi Geological Society has been a loyal sponsor of the Academy since its inception during the same year having been founded November 29, 1939. This year's 86th Academy in Biloxi was no exception. The Geological Society sponsored our Keynote speaker, Dr. Ezat Heydari from Jackson State University, so that he could share cutting edge research on *Sedimentary History of Gale Crater and Its Implication for the Geological Evolution of the Planet Mars*. His work with the Curiosity Rover led to one of the most downloaded publications ever from Nature: <https://www.nature.com/articles/s41598-020-75665-7>. Many in the society will know Dr. Heydari for his sedimentology work with the Smackover Formation.

The Geology and Geography Division was again a premier group with Amena Ruma from the University of South Dakota representing the division in the MAS Scholars Symposium, the University of Southern Mississippi's Dr. Jeremy Deans' student, Esther Goita, winning second place in the Millsaps Undergraduate Scholar Symposium with her abstract: *Fluid pathways in magmatic fluid dominated hydrothermal system: resurgent cone, Brothers Volcano, New Zealand* and the University of Southern Mississippi's Dr. Alyson Brink's student, Ginger Trochesset, winning an honorable mention for her abstract: *Fossil Faunal Composition of the Late Cretaceous Blue Springs Site in Northeastern Mississippi and Comparison with Fauna from the Coon Creek Type Locality in Southeastern Tennessee*.

The Society also sponsored our awards for 1st, 2nd, and 3rd, best oral presentations for both Undergraduate and Graduate students.



MISSISSIPPI ACADEMY OF SCIENCES

	Undergraduate	Graduate
First	Esther Goita: <i>Fluid pathways in magmatic fluid dominated hydrothermal system: resurgent cone, Brothers Volcano, New Zealand.</i> The University of Southern Mississippi	S M Asger Ali: <i>Spatial Exploration of Social Vulnerability and COVID-19 Related Health Outcomes in Mississippi.</i> Mississippi State University
Second	Ginger Trocheset: <i>A Fossil Faunal Composition of the Late Cretaceous Blue Springs Site in Northeastern Mississippi and Comparison with Fauna from the Coon Creek Type Locality in Southeastern Tennessee.</i> The University of Southern Mississippi	Sydney Kennedy: <i>Biodiversity Changes in Batoids from the Cretaceous Onward in the Mississippi Embayment.</i> The University of Southern Mississippi
Third	Seth Fradella: <i>Biostratigraphic Comparison and Analysis of the Blufftown Formation-Cusseta Sand Contact at Hannahatchee Creek, GA.</i> The University of Southern Mississippi	Amena Begum Ruma: <i>Patterns and Processes of Sandbar Revegetation on the Missouri National Recreational River.</i> The University of South Dakota

The ability to offer divisional awards sponsored by the Geologic Society is cited as the number one reason for undergraduate and graduate attendance at the meeting year after year. Without the active contributions of the society, these awards would not be possible. On behalf of the divisional attendees at the meeting, I would like to extend our immense gratitude to the generosity of the Society to sponsor these awards. They maintain the quality that is expected from Geologic Research in Mississippi. If you have not had the opportunity to peruse the journal for this year's Academy, it is available here: <https://msacad.org/current-abstract>. If you have research you would like to present at the next meeting, please contact our new chair, Dr. Claire Babineaux from Mississippi State University at claireb@ngi.msstate.edu.

Jonathan Leard, RPG
85th and 86th Mississippi Academy of Sciences
Geology and Geography Divisional Chair



GEOLOGY POST

ARTICLES, PAPERS or NEWS?

ATTENTION!!!!!! Industry, Professors and Students:

I am looking for more content from the industry and our schools.

Submissions can include anything from professional papers, thesis abstracts, job opportunities to pictures. Anything!!!!

If you have any information or news you would like to share with the Society **PLEASE** email them to the MGS Editor at:

mcaton13@yahoo.com

Thanks & Regards,

Matt Caton
Editor



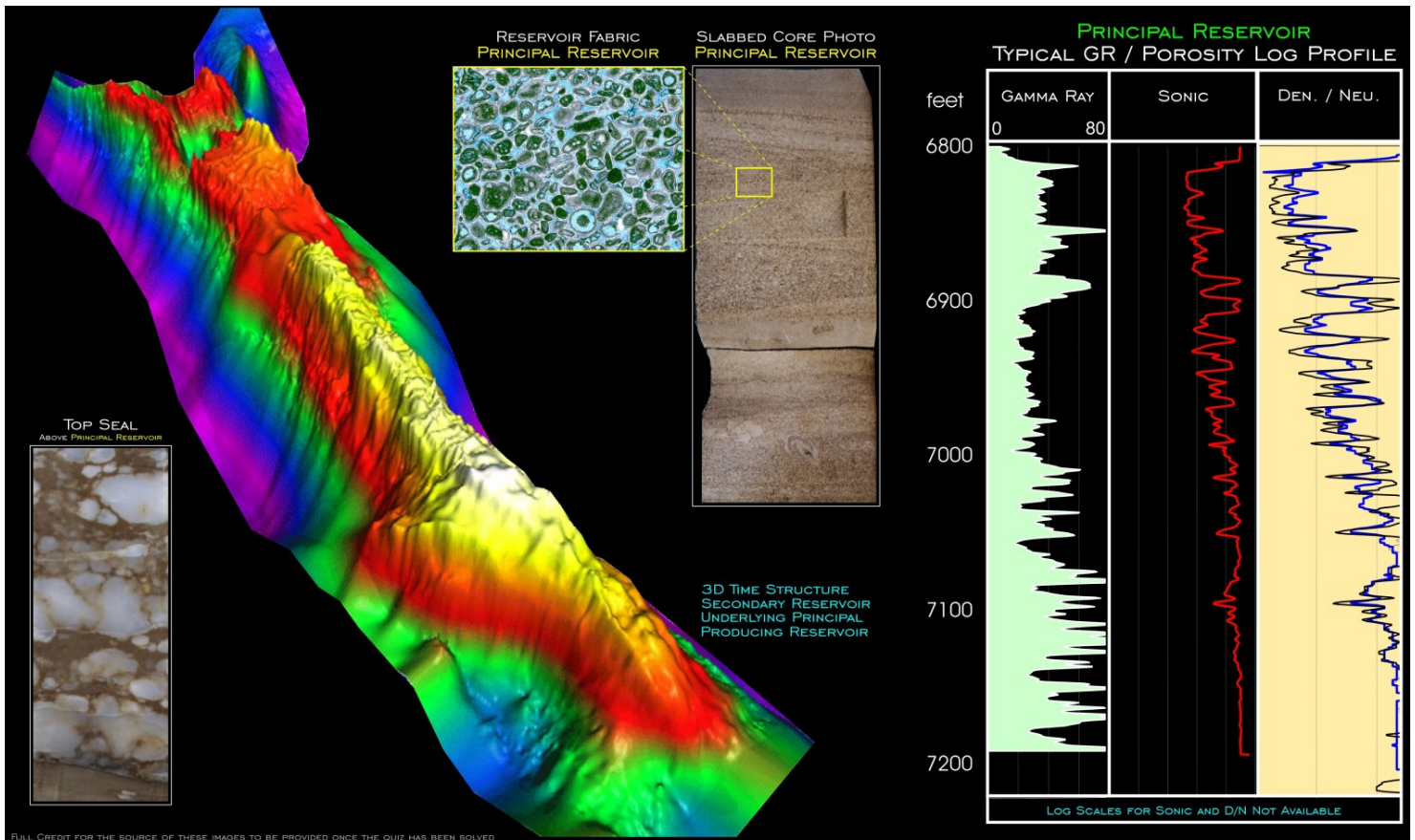
MONTHLY QUIZ

Steve Walkinshaw

Oil patch quiz time. Shown below are images of the 3D time structure, typical porosity log profile, reservoir fabric and top seal for a certain field in this country.

Discovered ~70 years ago, this trap is the most significant field in this country. While its principal oil reservoir is Mesozoic in age, this structure - underlain by an elongated basement horst block - also produces gas from several deeper Paleozoic reservoirs. The 3D structure shown is that of a large gas reservoir that underlies the principal Mesozoic oil reservoir.

This country's economy is heavily dependent upon the production from this field.





MONTHLY QUIZ

Steve Walkinshaw

Questions...

Part 1: What field am I referring to?

Part 2: What country?

Part 3: What is the principal Mesozoic oil reservoir?

Part 4: What is the Paleozoic carbonate gas reservoir that underlies the principal oil reservoir?

Part 5: What sandstone gas reservoir is found immediately beneath that Paleozoic carbonate gas reservoir?

Part 6: What's the name of the oldest gas reservoir?

Part 7: What's the age of the source rocks for the Paleozoic gas reservoirs?

Bonus:

Part 8: When dolomitized, what formed zones of "super-permeability" in the principal oil reservoir?

Part 9: On a BOPD basis, what foreign field produced more than this field in the mid-1980's?

ANSWERS AT BACK OF BULLETIN

GEO LINK POST

USGS TAPESTRY OF TIME AND TERRAIN <http://tapestry.usgs.gov> The CCGS is donating to all of the 5th and 6th grade schools in the Coastal Bend. Check it out—it is a spectacular map. You might want a framed one for your own office. The one in my office has glass and a metal frame, and it cost \$400 and it does not look as good as the ones we are giving to the schools. Call Owen 510-6224 if you want one for your office for \$150. Duncan, Mike, Chris, Dave, Bob Randy, Seb., Kevin, Ken, Craig, Patrick, Robert.

FREE TEXAS TOPO'S <http://www.tnris.state.tx.us/digital.htm> these are TIFF files from your state government that can be downloaded and printed. You can add them to SMT by converting them first in Globalmapper. Other digital data as well.

FREE NATIONAL TOPO'S [http://store.usgs.gov/b2c_usgs/b2c/start/\(xcm=r3standardpitrex_prd\)/.do](http://store.usgs.gov/b2c_usgs/b2c/start/(xcm=r3standardpitrex_prd)/.do) go to this webpage and look on the extreme right side to the box titled TOPO MAPS DOWNLOAD TOPO MAPS FREE.

<http://www.geographynetwork.com/> Go here and try their top 5 map services. My favorite is 'USGS Elevation Date.' Zoom in on your favorite places and see great shaded relief images. One of my favorites is the Great Sand Dunes National Park in south central Colorado. Nice Dunes.

<http://antwrp.gsfc.nasa.gov/apod/astropix.html> Astronomy picture of the day — awesome. I click this page everyday.

<http://www.spacimaging.com/gallery/ioweek/iow.htm> Amazing satellite images. Check out the gallery.

<http://www.ngdc.noaa.gov/seg/topo/globegal.shtml> More great maps to share with kids and students.

www.geo.org Don't forget we have our own web page.

<http://micro.magneet.fsu.edu/primer/java/scienceoptiscu/owersof10/>

<http://asterweb.jpl.nasa.gov/gallery/default.htm> Great satellite images of volcanoes

<http://terra.nasa.gov/gallery/> More here

www.ermapper.com They have a great free downloadable viewer for TIFF and other graphic files called ER Viewer.

www.drillinginfo.com This is an incredible (subscription) well and completion data service for independents. Can be demo'ed for free.

<http://terraserver.com/> Go here to download free aerial photo images that can be plotted under your digital land and well data. Images down to 1 meter resolution, searchable by Lat Long coordinate. Useful for resolving well location questions.

<http://www.fs.fed.us/gpnf/volcanocams/msh/> This is a live cam of Mt. St. Helens refreshed every 5 minutes. At the bottom are old videos of past eruptions in this cycle. It is worth a watch especially now.



MGS HONORARY MEMBERS

Esther Applin*

Verne Culbertson *

David C. Harrell*

Dudley J. Hughes*

Walter P. Jones*

Winnie McGlammery*

Maurice E. Miesse*

Marvin E. Norman*

Thurston Connell Rader*

Henry Toler*

Charles H. Williams *

David Cate

Bob Schneeflock

Paul Applin*

H. Leroy Francis*

Oleta R. Harrell*

Urban B. Hughes*

Harold Karges*

Thomas McGlothin*

Emil Monsour*

Marvin L. Oxley*

Baxter Smith*

H. Vaughn Watkins

Jerry Zoble

Stanley King

Paul Day*

Lawrence F. Boland*

Jim Furrh*

Ralph Hines*

Wendell B. Johnson *

Wilbur H. Knight*

Frederic F. Mellen*

William H. Moore*

Richard R. Priddy*

Harry V. Spooner

Stewart W. Welch*

Julius Ridgeway *

Dr. David T. Dockery III

*** deceased**

MEMBERSHIP APPLICATION / RENEWAL FORM

MISSISSIPPI GEOLOGICAL SOCIETY

P.O. BOX 422, JACKSON, MISSISSIPPI 39205-0422

2021-2022

Membership year is June through May

New Membership (\$20/yr)_____ Renewal (\$20/yr)_____ Student (FREE)_____ Associate (\$20/yr)_____

Boland Scholarship Fund Donation \$ _____ Total Amount Enclosed \$ _____

Last Name: _____ First: _____ MI: _____

Mailing Address: _____

Office Phone: _____ Home Phone: _____ FAX: _____

E-mail Address: _____

College/University Attended: _____

Degree(s) Obtained and Year(s) Awarded: _____

Professional Associations, Certifications, & Licenses: _____

MGS ADVERTISING ORDER FORM

September 2021 – May 2022

I. Bulletin Advertisements:

<u>Size</u>	<u>Rate/Year</u>	<u>Amt. Remitted</u>
Full Page Ad (6" x 8")	\$500	\$ _____
1/2 Page Ad (6" x 4")	\$300	\$ _____
1/4 Page Ad (3" x 4")	\$200	\$ _____
Business Card Ad (1 1/2" x 3")	\$100	\$ _____
Professional Listing (1/2" x 3")	\$ 50	\$ _____

II. Web Page Advertisements (www.missgeo.com):

<u>Type of Web Page Ad</u>	<u>Rate/Year</u>	<u>Amt. Remitted</u>
Front Page Sponsor (Banner Ad – limit of 5)	\$500	\$ _____
Second Page Banner Ad	\$250	\$ _____
Professional Listing/Link	\$100	\$ _____

(Note: Please contact Steve Walkinshaw at (601) 607-3227 or mail@visionexploration.com for details concerning placing your ad on the MGS web site.)

Total Remitted \$ _____

Please make checks payable to the Mississippi Geological Society. If you have any questions, contact Matt Caton at (601) 898-7444 or mcaton@tellusoperating.com



MGS PAST PRESIDENTS

1939-1940	Henry N. Toler	1980-1981	Marshall Kern
1940-1941	Urban B. Hughes	1981-1982	Stephen Oivanki
1941-1942	J. Tom McGlothlin	1982- 1983	James W. "Buddy" Twiner
1942-1943	Dave C. Harrell	1983- 1984	Charles H. Williams
1943-1944	K. K. "Bob" Spooner	1984- 1985	C. Kip Ferns
1944-1945	L. R. McFarland	1985-1986	Steven S. Walkinshaw
1945-1946	J. B. Story	1986-1987	J. R. ""Bob" White
1946-1947	Frederic F. Mellen	1987-1988	Harry Spooner
1947-1948	H. Lee Spyres/Robert D. Sprague	1988-1989	Stanley King
1948-1949	Robert D. Sprague	1989-1990	Stan Galicki
1949-1950	E. T. ""Mike" Monsour	1990-1991	E. James Files, Jr.
1950-1951	J. Tate Clark/ Charles E. Buck	1991-1992	Stephen L. Ingram, Sr.
1951-1952	George W. Field	1992-1993	Michael Noone/Stanley King
1952-1953	James L. Md11in, Jr.	1993-1994	Brian Sims
1953-1954	Wilbur H. Knight	1994-1995	C. W. "Neil" Barnes
1954-1955	A. Ed Blanton	1995-1996	Lester Aultman
1955-1956	Gilbert A. Talley	1996-1997	Jack S. Moody
1956-1957	Ben Ploch	1997-1998	George B. Vockroth 1957-
1958	Emil Monsour	1998-1999	Rick L. Ericksen
1958-1959	Charles Brown	1999-2000	Stanley King
1959-1960	M. F. Kirby	2000-2001	John C. Marble
1960-1961	Rudy Ewing	2001-2002	Andrew T. Sylte
1961-1962	Xavier M. Franscogna	2002-2003	Aaron Lasker
1962-1963	Robert B. Ross	2003-2004	John G. Cox
1963-1964	William A. Skees /Marvin Oxley	2004-2005	James E. Starnes
1964-1965	James F. Bollman	2005-2006	Todd Hines
1965-1966	Sankey L. Blanton	2006-2007	Bob Schneeflock
1966-1967	Alan Jackson	2007-2008	Tony Stuart
1967-1968	Julius M. Ridgway	2008-2009	Lisa Ivshin
1968-1969	Edward D. Minihan	2009-2010	Joe Johnson
1969-1970	Kevin E. Cahill	2010-2011	Brian Sims
1970-1971	John Lancaster	2011-2012	Stanley King
1971-1972	Larry Boland	2012-2013	Jim Files
1972-1973	Charles Barton	2013-2014	Neil Barnes
1973-1974	Larry Walter	2014-2015	Ezat Heydari
1974-1975	W. E. "Gene" Taylor	2015-2016	Jack Moody
1975-1976	Jerry E. Zoble	2016-2017	Cragin Knox
1976-1977	P. David Cate	2017-2018	David Hancock
1977-1978	Sarah Childress	2018-2019	Dr. David Dockery
1978-1979	Les Aultman	2019-2020	James O. Sparks
1979-1980	Philip R. Reeves	2020-2021	David Snodgrass



MONTHLY QUIZ

Steve Walkinshaw

Answers:

Part 1: What field am I referring to? Ghawar

Part 2: What country? Saudi Arabia

Part 3: What is the principal Mesozoic oil reservoir? Arab-D

Part 4: What is the Paleozoic carbonate gas reservoir that underlies the principal oil reservoir? Khuff

Part 5: What sandstone gas reservoir is found immediately beneath that Paleozoic carbonate gas reservoir? Unayzah

Part 6: What's the name of the oldest gas reservoir? Jauf

Part 7: What's the age of the source rocks for the Paleozoic gas reservoirs? Silurian

Part 8: When dolomitized, what formed zones of "super-permeability" in the principal oil reservoir? The stromatoporoid sponge known as cladocropsis, in the upper Arab-D limestone

Part 9: On a BOPD basis, what foreign field produced more than this field in the mid-1980's? Samotlor Field (West Siberia)