



Volume 60

No. 3

October 2011

MISSISSIPPI GEOLOGICAL SOCIETY *eBulletin*



missgeo.com

MGS 2010-2011 BOARD OF DIRECTORS



Officers

President	Stanley King	Independent	rox52doc@aol.com	(601) 842-3539
1st Vice President	Jim Files	Geodigital Consulting	jfgd@comcast	(601) 853-0701
2nd Vice President	Neil Barnes	Tellus Operating	nbarnes@tellusoperating.com	(601) 898-7444
Secretary	Matt Caton	Tellus Operating	mcaton@tellusoperating.com	(601) 898-7444
Treasurer	Bill Bagnall	Bureau of Land Management	william_bagnall@blm.gov	(601)-977-5417
Webmaster	Steve Walkinshaw	Vision Exploration	steve@visionexploration.com	(601) 607-3227
Advertising	Matt Caton	Tellus Operating	mcaton@tellusoperating.com	(601) 898-7444
Editor	Joe Johnson	Tellus Operating	mgs@treetop.us.com	(601) 898-7444

Boland Scholarship

President	Jim Files	Geodigital Consulting		(601) 853-0701
Secretary	Dave Cate	Pruet Oil		(601) 948-5279
Members	Ray Lewand Tony Stuart James Starnes Bob Schneeflock	Venture Oil & Gas DEQ Geodigital Consulting		(601) 428-7725 (601) 853-0701

Honorary Membership

Chairman	Charles H. Williams, Jr.	Vaughey & Vaughey		(601) 982-1212
Members	Dudley J. Hughes E. Ralph Hines Jerry Zoble	Hughes South Corp. Moon-Hines Independent		(601) 420-9892 (601) 572-8300

MGS Representatives

AAPG	Maurice Birdwell	Independent		(601) 936-6939
GCAGS	Danny Harrelson	U.S. Army Engineers R&D Center		(601) 634-2685

Other

Environmental Section	Ken Ruckstuhl	Environmental Mgt. Serv.		(601) 992-8233
Historian	Stanley King	Independent		(601) 842-3539

PRESIDENT'S LETTER

Stanley King

Greetings to all!

Cool temperatures are finally here and the leaves are beginning their (sometimes) annual showing-off. It is hard to believe that this year is waning fast, when I am just getting used to the whole idea that it's 2011. Oh well, it's good to be on this side of the grass. I'm not really sure what is going on in the oil patch—if somebody knows, would you please 'splain it to me?

I do know, however, that on WEDNESDAY, November 9th, we will have as our monthly luncheon speaker John B. Wagner, who will talk on the Norphlet as seen in the deepwater eastern Gulf of Mexico and comparisons to both modern and ancient analogs. We will meet again at River Hills Club so make you plans to be there! Note that this meeting is on WEDNESDAY, not the usual Thursday.

In mid-October I represented our Society at the GCAGS Annual Board Meeting which took place in Houston. Although the Veracruz convention had to be cancelled due to security concerns, planning is in full swing for the 2012 Annual Convention to be held in Austin, TX. You probably have already received a call for papers from Austin and/or GCAGS. It looks like Austin is gearing up to put on a first-class convention.

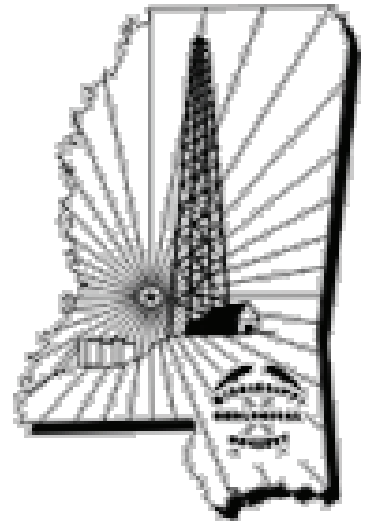
AAPG is asking societies for nominations for AAPG officers. These are due in February, 2012, but if you have someone in mind you would like to nominate, please contact one of your MGS officers as soon as possible and let them know.

At our last luncheon meeting Jack Moody gave a brief synopsis of a program which has money available to help spur economic development in the state. His letter appears in this bulletin. As he asked at that time for input, I am likewise now asking that you consider this opportunity and let him or me or any of the officers know your thoughts. Thank you.

According to my calendar, this will be the last chance I have before Thanksgiving to admonish you not to eat too much turkey and such. But I won't—I will simply ask you to reflect upon the reasons we all have for thanksgiving and to be truly grateful. The calendar also says that we have an election day coming up next week. Get out and exercise your right and privilege that so many have fought and died to preserve and protect.

I look forward to seeing you on WEDNESDAY, November 9, at the luncheon meeting!

Stanley King



MGS

In This Issue:

Meetings Schedule

Monthly Speaker Info

JYC Information

A Good Read

Various Information

MGS Membership

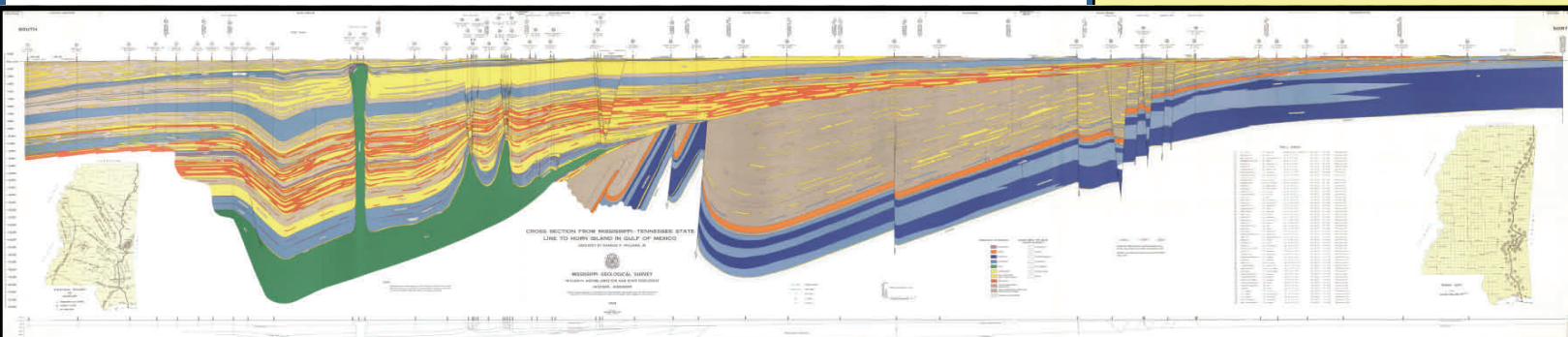
Application

Members in good standing.

MGS Advertising Notice

**MGS Boland Scholarship
Fund**

MGS Honorary Members



MGS MEETING SCHEDULE

When	What/Who	Where
September 8, 2011	Fall BBQ	Jackson Yacht Club-5:30pm
October 13, 2011	Gas Hydrate: A Huge Emerging Energy Resource Art Johnson: Hydrate Energy International	River Hills – 11:30am
November 9, 2011	The Jurassic Norphlet Formation of the Deep Water Eastern Gulf of Mexico: A Revisit of the Sedimentology of Aeolian Systems & Comparisons to both the Modern Namib Desert and Ancient Cedar Mesa Analogues: John B. Wagner*	River Hills – 11:30am
December ?, 2011	Christmas Party and Dance	Colonial Country Club
January 12, 2012	TBD	River Hills – 11:30am
February 9, 2012	TBD	River Hills – 11:30am
March 8, 2012	TBD	River Hills – 11:30am
April 12, 2012	Boland Scholarship Awards	River Hills – 11:30am
May 10, 2012	Spring Fling	Jackson Yacht Club– 5:30pm



OFFICERS MEETINGS

August 4, 2011

September 1, 2011

October 6, 2011

November 3, 2011

December 1, 2011

January 5, 2012

February 2, 2012

March 1, 2012

April 5, 2012

May 3, 2012

MGS LUNCHEON SPEAKER:

The Jurassic Norphlet Formation of the Deep Water Eastern Gulf of Mexico: A Revisit of the Sedimentology of Aeolian Systems & Comparisons to both the Modern Namib Desert and Ancient Cedar Mesa Analogues

John B. Wagner*

Nexen Petroleum, Inc. Dallas, Texas

ABSTRACT

Aeolian systems consist of dune and interdune deposits that are intimately associated with a variety of extradunal facies (e.g., wadi, sabkha, sand sheet, alluvial fan, etc.). The Jurassic Norphlet Formation is extensive buried Aeolian sandstone first discovered in 1922 in Norphlet, Arkansas. Recent drilling in the deepwater eastern Gulf of Mexico, utilizing high-resolution 3D seismic has led to further seaward extension of this vast aeolian system.

Aeolian strata interpreted includes dune deposits characterized by grainflow, grainfall, and wind ripple, as well as interdune deposits with dry, wet, and evaporitic interdune elements. Reservoir properties of these aeolian systems are shown to be related to primary depositional processes and post-depositional diagenetic modifications. Within these Aeolian reservoirs, sublayers of variable reservoir quality are shown to be directly related to the differential distribution of stratification types and are key to understanding the permeability anisotropy observed both vertically and horizontally. Analogs to this study include the modern Namib Desert in Namibia, Africa and the ancient Cedar Mesa (Permian) in Utah.

Co-authors: S. W. Douglas, N. Ball and R. J. Moiola

Bio- Dr. J. B. Wagner

John received both his B.S. and M.S. degrees in geology from Louisiana State University in Baton Rouge and his Ph.D. in geology at The University of Texas at Dallas. He joined Nexen Petroleum in December of 2000 as Sedimentologist for Deep-water Exploration and Development and is currently Chief Geologist for Nexen Petroleum U.S.A. Prior to joining the petroleum industry with Mobil Research & Development in 1987, his work ranged from field geologist in Alaska, to manager of a seismic crew, to coastal geologist for the Louisiana Geological Survey Coastal Geology Program. John was a scientist on board the 1985 USGS/IOS GLORIA survey of the deep-water Mississippi Fan, Gulf of Mexico which was a significant expedition in regards to our understanding of deep-water submarine fan systems. He is a member of both the AAPG and SEPM and has served on Program Committees for the Gulf Coast Section Society of Economic Paleontologists and Mineralogists (GCSSEPM) Foundation Annual Research Conferences and was the 2009 President of GCSSEPM. Most recently, he was awarded the prestigious A.I. Levorsen Memorial Award for the best paper presented at the American Association of Petroleum Geologists (AAPG) Gulf Coast Section meeting (GCAGS). In addition to his role as Chief Geologist for Nexen Petroleum U.S.A., John is currently a Research Associate Professor at Southern Methodist University in Dallas, Texas, where he serves as graduate advisor and teaches graduate courses in the field of sedimentology and has published over 30 papers and abstracts. His work travels have taken him from the rivers and streams of Sakhalin Island Russia, to the coast of Vietnam, to the jungles and mountains of Bolivia and Argentina. His primary research interests are focused on siliciclastic depositional systems both modern and ancient, sandstone sedimentology, reservoir architecture, depositional systems analysis, and understanding the various allocyclic and autocyclic controls that influence deposition.



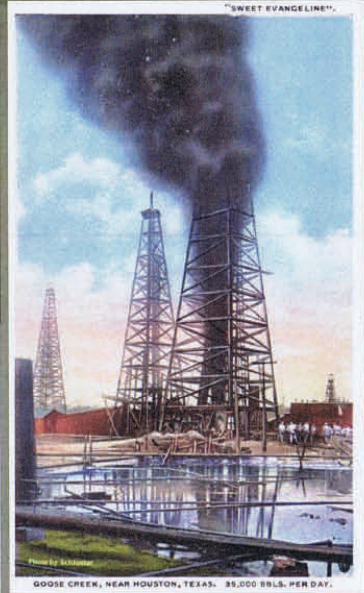
Standing left to right, Larry Baria, Dr. Charles Neill, Hindman Doxey, Mike Harmount and George Vockroth (winner of the wet t-shirt contest).
Exuma, Bahamas geology field trip, 1997.



2012 Oil History Symposium

March 8-10
Houston, TX

CALL FOR ABSTRACTS
Oral presentations and posters
Deadline: January 15, 2012
www.petroleumhistory.org
Submit abstracts to:
wbrice@pitt.edu
more information: spencerj320@gmail.com



Future Meetings of Selected Earth Science Organizations

EVENT	2011	2012	2013	2014	2015
AAPG Annual Convention & Exhibition (ACE)	10–13 April Houston, TX	22–25 April Long Beach, CA	19–22 May Pittsburgh, PA	6–9 April Houston, TX	31 May–3 June Denver, CO
AAPG International Conference & Exhibition (ICE)	23–26 October Milan, Italy	September Singapore	8–11 September Cartagena, Colombia		
AAPG Prospect & Property Expo-London (APPEX)	1–3 March London, UK	6–8 March London, UK			
AAPG Annual Leadership Conference	12–14 August Boulder, CO				
AAPG Foundation Trustee Associates	7–11 September Lake Tahoe, CA	28 Oct–1 Nov Scottsdale, AZ			
AAPG European Region Conference					
AAPG Eastern Section	25–27 September Washington, D.C.	22–26 September Cleveland, OH			
AAPG Gulf Coast Section (GCAGS)	16–19 October Veracruz, Mexico	21–23 October Austin, TX	Sept–Oct TBD New Orleans, LA	Sept–Oct TBD Lafayette, LA	Sept–Oct TBD Houston, TX
AAPG Mid-Continent Section	1–4 October Oklahoma City, OK				
AAPG Pacific Section	9–11 May Anchorage, AK	22–25 April Long Beach, CA			
AAPG Rocky Mountain Section (RMS)	26–29 June Cheyenne, WY	9–12 September Grand Junction, CO	TBD Salt Lake City, UT	TBD Denver, CO	
AAPG Southwest Section	5–7 June Ruidoso, NM	19–22 May Ft. Worth, TX			
AAPG Polar Petroleum Potential (3P)	30 Aug–2 Sept Halifax, Nova Scotia				
American Association of Petroleum Landmen (AAPL) Annual Meeting	8–11 June Boston, MA				
Arctic Technology Conference (OTC) <i>New!</i>	7–9 February Houston, TX	3–5 December Houston, TX			
Asia Pacific Oil & Gas Conference (SPE)	20–22 September Jakarta, Indonesia	22–24 October Perth, Australia			
Association of Environmental & Engineering Geologists (AEG)	19–24 September Anchorage, AK	TBD Salt Lake City, UT	TBD Seattle, WA		
Canadian Society of Petroleum Geologists (CSPG), Canadian Society of Exploration Geoscientists (CSEG), & Canadian Well Logging Society (CWLS)	9–13 May Calgary, AB, Canada				
European Assoc. of Geoscientists and Engineers (EAGE)	23–26 May Vienna, Austria	4–7 June Copenhagen, Denmark	9–14 June London, UK		
GEO India — South Asian Geosciences Conference & Exhibition	12–14 January New Delhi, India	Not Held			
GEO Middle East Geosciences Conference and Exhibition	Not Held	4–7 March Bahrain	Not Held		
Geological Assoc. of Canada/ Mineralogical Assoc. of Canada Annual Meeting	25–27 May Ottawa, ON, Canada	27–29 May St. John's, NL, Canada	22–24 May Winnipeg, MB, Canada		
Geological Society of America (GSA)	9–12 October Minneapolis, MN	4–7 November Charlotte, NC	27–30 October Denver, CO		
IPTC – International Petroleum Technology Conference (AAPG/EAGE/SEG/SPE)	15–17 November Bangkok, Thailand	5–7 December Beijing, China	2–4 December Doha, Qatar	TBD Kuala Lumpur, Malaysia	
National Association of Black Geologists & Geophysicist (NABGG)	7–10 September San Francisco, CA				
NAPE – North American Prospect Expo (AAPL) – Winter	16–18 February Houston, TX	22–24 February Houston, TX			
NAPE – North American Prospect Expo (AAPL) – Summer	17–19 August Houston, TX				
OTC – Offshore Technology Conference (SPE)	2–5 May Houston, TX	30 April–3 May Houston, TX	6–9 May Houston, TX	5–8 May Houston, TX	
PETEX (PESGB)	Not Held				
Society of Exploration Geophysicists (SEG)	18–23 September San Antonio, TX	4–9 November Las Vegas, NV	22–27 September Houston, TX	26–31 October Denver, CO	
Society of Independent Earth Scientists (SIPES)	20–23 June Jackson Hole, WY				
Society of Petroleum Engineers (SPE)	30 Oct–2 Nov Denver, CO	8–10 October San Antonio, TX	30 Sept–2 Oct New Orleans, LA		
Society of Professional Well Log Analysts (SPWLA)	14–18 May Colorado Springs, CO				

Shaded boxes indicate that all aspects of meeting are managed by the American Association of Petroleum Geologists
Global Development and Conventions Department
P.O. Box 979, Tulsa, Oklahoma 74101-0979 USA +1 918 560 2679
Updated 14 July 2011 / Dates are subject to change

GEO LINK POST

USGS TAPESTRY OF TIME AND TERRAIN <http://tapestry.usgs.gov> The CCGS is donating to all of the 5th and 6th grade schools in the Coastal Bend. Check it out—it is a spectacular map. You might want a framed one for your own office. The one in my office has glass and a metal frame, and it cost \$400 and it does not look as good as the ones we are giving to the schools. Call Owen 510-6224 if you want one for your office for \$150. Duncan, Mike, Chris, Dave, Bob Randy, Seb., Kevin, Ken, Craig, Patrick, Robert.

FREE TEXAS TOPO'S <http://www.tnris.state.tx.us/digital.htm> these are TIFF files from your state government that can be downloaded and printed. You can add them to SMT by converting them first in Globalmapper. Other digital data as well.

FREE NATIONAL TOPO'S [http://store.usgs.gov/b2c_usgs/b2c/start/\(xcm=r3standardpitrex_prd\)/.do](http://store.usgs.gov/b2c_usgs/b2c/start/(xcm=r3standardpitrex_prd)/.do) go to this webpage and look on the extreme right side to the box titled TOPO MAPS DOWNLOAD TOPO MAPS FREE.

<http://www.geographynetwork.com/> Go here and try their top 5 map services. My favorite is 'USGS Elevation Date.' Zoom in on your favorite places and see great shaded relief images. One of my favorites is the Great Sand Dunes National Park in south central Colorado. Nice Dunes.

<http://antwrp.gsfc.nasa.gov/apod/astropix.html> Astronomy picture of the day — awesome. I click this page everyday.

<http://www.spacimaging.com/gallery/ioweek/iow.htm> Amazing satellite images. Check out the gallery.

<http://www.ngdc.noaa.gov/seg/topo/globegal.shtml> More great maps to share with kids and students.

www.geo.org Don't forget we have our own web page.

<http://micro.magneet.fsu.edu/primer/java/scienceoptiscu/owersof10/>

<http://asterweb.jpl.nasa.gov/galery/default.htm> Great satellite images of volcanoes

<http://terra.nasa.gov/gallery/> More here

www.ermapper.com They have a great free downloadable viewer for TIFF and other graphic files called ER Viewer.

www.drillinginfo.com This is an incredible (subscription) well and completion data service for independents. Can be demo'ed for free.

<http://terrasrver.com/> Go here to download free aerial photo images that can be plotted under your digital land and well data. Images down to 1 meter resolution, searchable by Lat Long coordinate. Useful for resolving well location questions.

<http://www.fs.fed.us/gpnf/volcanocams/msh/> This is a live cam of Mt. St. Helens refreshed every 5 minutes. At the bottom are old videos of past eruptions in this cycle. It is worth a watch especially now.

FALL BBQ 2011 PICTURES









THANKS TO ALL OF OUR SPONSORS & THOSE THAT ATTENDED

CANCELLED

Gulf Coast Association of Geological Societies



61st GCAGS Annual Convention

October 16 - 19, 2011

Veracruz, Mexico

GULF COAST ASSOCIATION OF GEOLOGICAL SOCIETIES GOM GEOLOGY GOES BEYOND BORDERS!

An ancient Aztec icon, **OLLIN**, inspired the 61st GCAGS Annual Convention. Ollin represents transformation and creative evolution and also symbolizes the idea AMGP's geologists have about this Convention expressed by its theme: **"Sharing knowledge to add value"**. The convention features a first-class technical program in the relaxed ambiance of the port city of Veracruz.

For the very first time you will have a chance to attend a meeting offering an integrated technical program with an unabridged regional vision of the geology of the Gulf of Mexico.

- 155 technical presentations featuring Deepwater Setting, Geology, and Economics: 95 from southern and western GOM, 53 from northern GOM, and 7 from Cuba.
- Symposium: "Jurassic Regional Framework and Reservoirs in the Gulf of Mexico".
- A luncheon conference.
- 6 short courses including *Fractured reservoirs with examples from southern Mexico and Petroleum provinces of Mexico*.
- 3 field trips to classic localities of eastern and southeastern Mexico: *Chicontepec, Sierra Madre Oriental, and Sierra de Chiapas*.
- Exhibition including networking events.

Student activities and spouse/guest programs are an integral part of the Convention.

DON'T MISS THIS LANDMARK CONVENTION!

For more information visit:

www.gcags2011.com

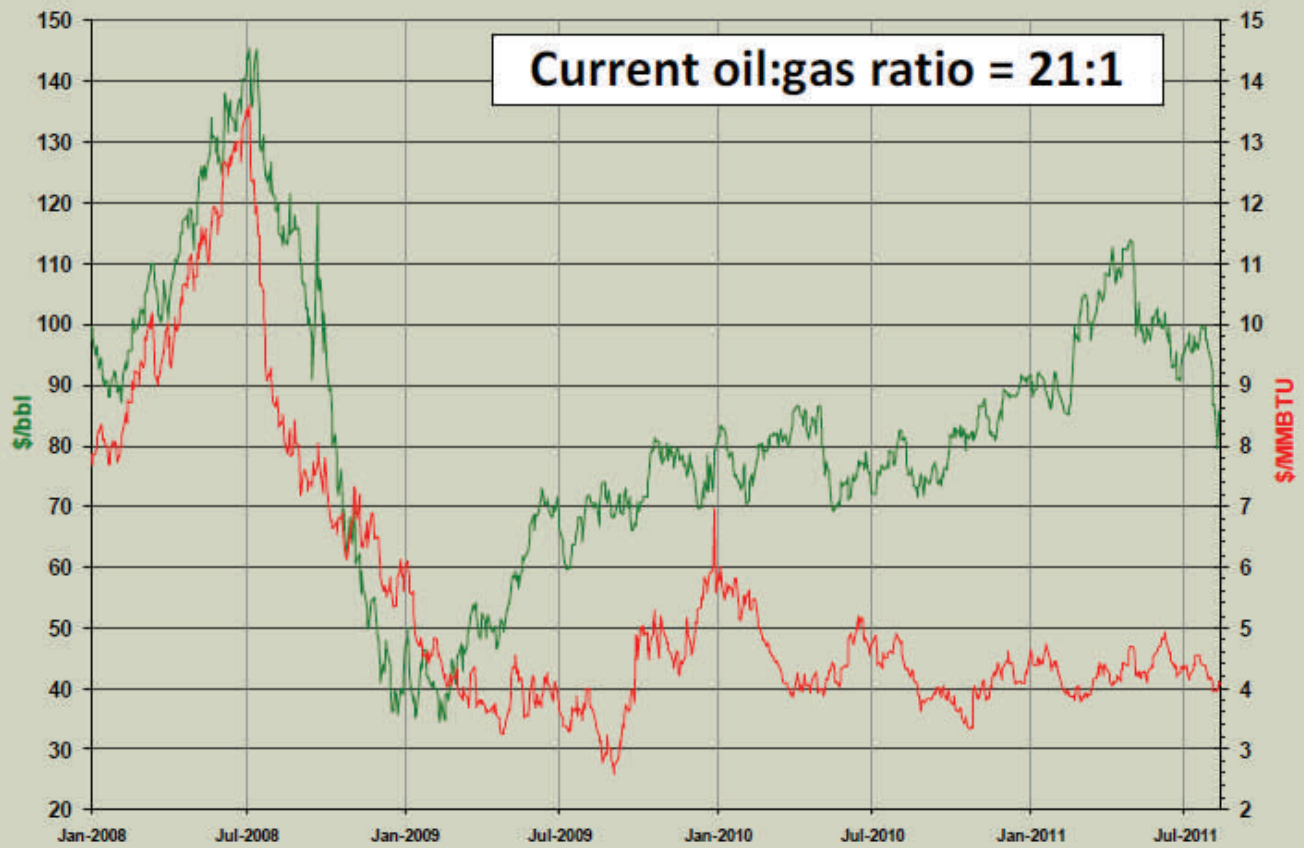
We look forward to seeing you all in Veracruz!



Hosted by the
Asociación Mexicana
de Geólogos Petroleros



NYMEX DAILY SPOT



Current Oil & Gas Prices	OIL	GAS	OIL-12-Mo Strip	GAS-12-Mo Strip
NYMEX Close Friday 8/12/11	\$ 85.38	\$ 4.06	\$ 85.89	\$ 4.20
ICE* current(8/15 @ 9:05 AM)	\$ 86.86	\$ 3.97	*Intercontinental Commodities Exchange	

SOURCE: Oil & Gas Asset Clearinghouse

TURN IT TO THE RIGHT!



Do you have any articles that you want to share with the MGS membership?

Something you read online or something you wrote.

Please email them to the MGS Editor at mgs@treetop.us.com.

We would like to add more content from the membership.

MGS BOLAND SCHOLARSHIP FUND

The Society's L. F. Boland Scholarship Fund is open to donations (tax deductible) year round. Your contribution will help the Society recognize and reward outstanding earth science students at its annual Honors Day meeting on April 7th, 2011.

Since inception in 1980, the Society has honored 104 students with the Boland Award. If you would like to contribute, please contact Dave Cate at 601-718-9397 or mail your check (L. F. Boland Scholarship Fund) to him at 217 W. Capitol St., Jackson, MS 39201.

The MGS gratefully acknowledges the following contributors to the L. F. Boland Scholarship Fund for the 2011-2012 year.

Maurice Birdwell Kieth Gourges
Maurice Meylan Philip Reeves
Julius Ridgway
Chris Franks
Donnie Lambert
Ken McCarley
Vaughan Watkins

MGS Honorary Members

Esther Applin*	Paul Applin*	Lawrence F. Boland*
Verne Culbertson *	H. Leroy Francis*	Jim Furrh*
David C. Harrell*	Oleta R. Harrell*	Ralph Hines
Dudley J. Hughes	Urban B. Hughes*	Wendell B. Johnson *
Walter P. Jones*	Harold Karges*	Wilbur H. Knight*
Winnie McGlammery*	Thomas McGlothin*	Frederic F. Mellen*
Maurice E. Miesse*	Emil Monsour*	William H. Moore*
Marvin E. Norman*	Marvin L. Oxley*	Richard R. Priddy*
Thurston Connell Rader*	Baxter Smith*	Harry V. Spooner
Henry Toler*	H. Vaughn Watkins	Stewart W. Welch
Charles H. Williams	Jerry Zoble	Julius Ridgeway

* deceased

MEMBERSHIP APPLICATION / RENEWAL FORM

MISSISSIPPI GEOLOGICAL SOCIETY

P.O. BOX 422, JACKSON, MISSISSIPPI 39205-0422

2011-2012

Membership year is June through May

New Membership (\$20/yr)_____ Renewal (\$20/yr)_____ Student (FREE)_____ Associate (\$20/yr)_____

Boland Scholarship Fund Donation \$_____ Total Amount Enclosed \$_____

Last Name:_____ First:_____ MI:_____

Mailing Address:_____

Office Phone:_____ Home Phone:_____ FAX:_____

E-mail Address: _____

College/University Attended: _____

Degree(s) Obtained and Year(s) Awarded: _____

Professional Associations, Certifications, & Licenses: _____

The following are MGS members in good standing

Ken Adams	Ken Magee	Stephen Richard Yancey
Bill Bagnall (O)	Ken McCarley	
Larry Baria	Joe McDuff	
Neil Barnes (O)	Maurice Meylan	
Maurice Birdwell	James Michael	
Randy Bissell	David Miller	
Michael Bograd	Lew Murray	
Chris Bowen	Pat Moore	
Alvin Byrd	Charlie Morrison	
Dave Cate	James Nix	
Matt Caton (O)	James Norris	
Paul Day	Thang Pham	
Charles Doubek	Jeanne Phelps	
Dave Easom	Robert Phillips	
Jim Files (O)	William Potthoff	
J. Michael Fincher	Billy Powell	
Chris Franks	Mike Rasmussen	
Stan Galicki	Philip Reeves	
Bob Gaston	Gail Russell	
Erin Gilmore	Winston Russell	
Max Gilpin	Robert Schneeflock	
Keith Gourgues	Mark Scott	
Carl Grey	Thomas Bing Seitz	
Paul Gribas	George Self, Jr.	
Tom Giosa	C. David Senior	
Danny Harrelson	Brendan Sidereas	
Andrew Head	Drew Sills	
James Harris	John Silvernail	
Franklin Heitmuller	Kevin Skees	
Dan Herlihy	Jim Sparks	
Robert Herr	James Starnes	
David Hilton	Jim Stevens	
Todd Hines	Edwin Stricker	
I Meade Hufford	John Sullivan	
Lisa Ivshin	Andy Sylte	
Kevin Jefferys	Tom Sylte	
Dustin Johnson	Michael Taylor	
Lars Johnson	Stan Thieling	
Joe Johnson (O)	David Thompson	
Fred Katzenmeyer	Sid Thompson	
Karl Kaufmann	Wayne Upchurch	
Barbara Kearney	Watts Ueltschey	
Stanley King (O)	Steve Walker	
Donnie Lambert	Steve Walkinshaw	
James Landrem	Fred Walsh	
S. Cody Lenert	Johnnie Wanger	
James Libiez	Rob Weyman	
Michael Lieser	Joe White	
	Bradley Winton	

(O) - officer

(H) - Honorary

MGS ADVERTISING ORDER FORM

September 2010 – May 2011

I. Bulletin Advertisements:

<u>Size</u>	<u>Rate/Year</u>	<u>Amt. Remitted</u>
Full Page Ad (6" x 8")	\$500	\$ _____
1/2 Page Ad (6" x 4")	\$300	\$ _____
1/4 Page Ad (3" x 4")	\$200	\$ _____
Business Card Ad (1 1/2" x 3")	\$100	\$ _____
Professional Listing (1/2" x 3")	\$ 50	\$ _____

II. Web Page Advertisements (www.missgeo.com):

<u>Type of Web Page Ad</u>	<u>Rate/Year</u>	<u>Amt. Remitted</u>
Front Page Sponsor (Banner Ad – limit of 5)	\$500	\$ _____
Second Page Banner Ad	\$250	\$ _____
Professional Listing/Link	\$100	\$ _____

(Note: Please contact Steve Walkinshaw at (601) 607-3227 or mail@visionexploration.com for details concerning placing your ad on the MGS web site.)

Total Remitted \$ _____

Please make checks payable to the Mississippi Geological Society. If you have any questions, contact Matt Caton at (601) 898-7444 or mcaton@tellusoperating.com

SEI®

SEISMIC EXCHANGE, INC.

201 St. Charles Ave., Suite 4300
New Orleans, LA 70170-4300
(504) 581-7153 • Fax (504) 581-9591

HOWARD PATTON

PRUET OIL COMPANY, LLC

OIL & GAS EXPLORATION

217 WEST CAPITOL STREET
JACKSON, MS 39201

OFFICE: (601) 948-5279 Fax: (601) 944-1281

W. LESTER AULTMAN

125 South Congress St., Suite 1212, Jackson, MS 39201
Office (601) 353-2738 Res. (601) 924-4830

VANTAGE OIL COMPANY

7170 Tank Road (601) 878-0593
Terry, MS 39170



Day Dreams Resources, LLC

Jerry P. Ogden

OIL AND GAS EXPLORATION AND PRODUCTION
CONSULTING PETROLEUM ENGINEER

Jerry P. Ogden, Pet. Eng.
P. O. Box 101
Natchez, MS 39121
email: ogdenjerry@bellsouth.net

Office (601) 446-8105
Fax (601) 446-8844
Cell (601) 807-1000



EXPLORATION, L.L.C.

401 Edwards Street, Suite 1200
Shreveport, LA 71101

P.O. Box 1367
Shreveport, LA 71164

office: (318) 222-8406
fax: (318) 222-6061
email: mei@marlinexploration.com

Jon Q=Petersen
President

S. Cody Lenert
Geologist

Autie T. Orjias
V.P./Land Manager

Ryan Q=Petersen
Land

Dean Giles
Secretary/Treasurer

Rhonda White
Admin. Assistant

Joe R. White, J r.
Chief Geologist



ENERGY DRILLING COMPANY [®]

CONTRACT DRILLING 3000 – 15,000 FEET
MS-AL-FL-ARK-LA-TEX

Pat Burns, Jr.

Jody Helbling

Nestor Navarro

601-446-5259

(Fax)601-446-8607

P. O. Box 905

413 Liberty Rd.

Natchez, MS 39121



OPERATING GROUP, LLC

OPERATING GROUP, LLC

602 Crescent Place, Suite 100

Ridgeland, MS 39157

601-898-7444 Voice

601-898-7446 Fax

BRIAN SIMS

EXPLOITATION GEOLOGIC MANAGER

Email: bsims@tellusoperating.com

OWLCO

Oil Well Logging Company
P. O. Box 1692
Madison, MS 39130
(601) 477-8315



MOCO INC.
The Mississippi Oil Company

MICHAEL L. BLACKWELL
H. DON NOBLITT

603 Northpark Drive • Ridgeland, MS 39157
(601) 957-3550



Karl J. Kaufmann
President

Suite B
546 Keyway Drive
Jackson, MS 39232

601-936-3601
Fax 601-936-3646
coukauf@aol.com

BLAIR & BONDURANT, P.A.
ATTORNEYS AT LAW

WILLIAM F. BLAIR

P.O. Box 321423 1368 Old Fannin Road
Jackson, MS 39232 Suite 300
Telephone: (601) 992-4477 Brandon, MS 39047
Telecopier: (601) 992-9189 Email:



**TROPHY
PETROLEUM
CORPORATION**

100 N. Van Buren Street
Post Office Box 415
Carthage, MS 39051
(601) 298-0200 (601) 298-0201 Fax

E. Wayne Upchurch
President

**ARK-LA-TEX
LOG LIBRARY, INC.**

400 TRAVIS - SUITE 500
SHREVEPORT, LOUISIANA 71101-3113

Marie Pace
MANAGER

PHONE (318) 227-1641
FAX (318) 227-1642

BRUXOIL, INC.

DAVID K. BROOKS - PRESIDENT
RAYMOND A. HELFRICH - VICE PRESIDENT
DOROTHY M. JAUBERT

P. O. Box 16929
Jackson, MS 39236
(601) 981-5722
FAX: (601) 366-9490



COX John G. Cox
Petroleum Geologist

John G. Cox
Geologist

601.978.1763
603 Northpark Drive, Suite 300 fax 601.952.0425
Ridgeland, Mississippi 39157 john_cox@bellsouth.net

MOON & HINES
OIL & GAS EXPLORATION

MOON-HINES-TIGRETT OPERATING CO., INC.
PROPERTY MANAGEMENT

P O BOX 3216
RIDGELAND, MS 39158

OFFICE (601) 572-8300 FAX (601) 572-8310



ROUNDTREE & ASSOCIATES, INC.
OIL AND GAS PRODUCTION
210 Trace Colony Park Drive,
Ridgeland, MS 39157
Phone (601) 355-4530

Boone Exploration, Inc.

Lynn D. Boone
President

J.C. Carlisle
Vice President

21 Wire Road
P.O. Box 8660
Huntsville, TX 77340

Phone: 936-295-4066
Fax: 936-295-4042
Email: jcc9551@aol.com



KELTON OPERATING COMPANY, INC.
since 1953

605 SUN TRUST TOWER
220 W. GARDEN STREET
PENSACOLA, FL 32501
P.O. BOX 230
PENSACOLA, FL 32591

TELEPHONE
(850) 434-6830
FACSIMILE
(850) 434-6842

I. Meade Hufford, CPL
Owner-President

Energy Land Services

Oil & Gas Exploration

99 N. Post Oak Lane
Suite 6101
Houston, TX 77024
Phone: 713-888-0012
Cell: 713-705-7235
E-mail: hufford1913@aol.com
VA Phone: 804-438-5852

JULIUS M. RIDGWAY

COASTAL EXPLORATION, INC.

1437 OLD SQUARE ROAD, #104
JACKSON, MISSISSIPPI 39211

601-362-0502
FAX: 601-362-5397

SPOONER PETROLEUM COMPANY

210 East Capitol St., Suite 956
Jackson, Mississippi 39201

**Oil & Gas Production & Exploration
Contract Operations**

601-969-1831

JAMES B. FURRH, Jr., Inc.

Oil & Gas Exploration

4450 Old Canton Road, Suite 205,
Jackson, MS 39211
Phone (601) 982-9393 Fax (601) 982-9785

E. GEOFFREY JEFFREYS

Petroleum Consultant

OIL, GAS AND MINERAL APPRAISALS

115 Fairway Drive
Daphne, AL 36526
egjeffreys@aol.com

Off (251) 621-1850
Fx (251) 621-1630
Cell (251) 709-7919

Bryant Miller

1837 Peachtree Street
Jackson, MS 39202

bryantgmiller@bryantgmiller.com

ENERGEN
RESOURCES

President & COO

John Richardson

Senior Vice President

Operations

Paul Sparks

General Manager

Acquisitions & Engineering

Gene Cash

General Manager

Geology

Ron Tisdale

General Manager

Land

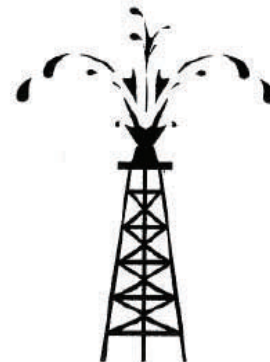
Paul Rote

(205)326-2721

Joseph H. McDuff
Geologist

351 Chapel Loop
Mandeville, LA 70471
985.845.9430

jhmcduff@charter.net



**Diversified Land
Management, Inc.**

**PERMIT ACQUISITION
SPECIALISTS**

Jack Tate

President

Office: 337.886.0060

Fax: 337.886.0064

Cell: 601.259.1366

email: geoagent46@aol.com

dminconline.com

"A company committed to excellence and achieving success while providing professional permitting acq. & project mngt. with the client's interests & concerns top priority"

Get More



from your Core

With reservoirs becoming increasingly complex, you need the most accurate information you can get to better understand your reservoir.

Weatherford Labs helps you get more from your core by combining an unsurpassed global team of geoscientists, engineers, technicians and researchers with the industry's most comprehensive, integrated laboratory services worldwide. From core analysis, sorption, geochemistry and isotopic composition to detailed basin modeling and comprehensive data packages, we provide you with real reservoir rock and fluid information that hasn't been distilled by a simulator or iterated by software.

We call it "The Ground Truth™" – giving you the accurate answers you need for better reservoir understanding. You'll call it a better return on your reservoir investment. To learn more, contact TheGroundTruth@weatherfordlabs.com.



Weatherford
LABORATORIES
weatherfordlabs.com

© 2011 Weatherford. All rights reserved. Trade dress proprietary and patented Weatherford technology.

Denbury

5320 Legacy Drive
Plano, TX 75024

Denbury Resources, Inc.

Denbury Resources, Inc. is a growing independent oil and gas company. The Company is the largest oil and natural gas operator in Mississippi and Montana, owns the largest reserves of CO₂ used for tertiary oil recovery east of the Mississippi River, and holds significant operating acreage in the Rockies, Permian Basin, Mid-Continent and Gulf Coast. The Company's goal is to increase the value of acquired properties through a combination of exploration, drilling and proven engineering extraction practices, with its most significant emphasis relating to tertiary recovery operations.

NYSE: DNR
www.denbury.com

Denbury Resources Inc.

**BRANCHING
OUT**

MISSISSIPPI GEOLOGICAL SOCIETY

PAST PRESIDENTS

1939-1940	Henry N. Toler	1973-1974	Larry Walter
1940-1941	Urban B. Hughes	1974-1975	W. E. "Gene" Taylor
1941-1942	J. Tom McGlothlin	1975-1976	Jerry E. Zoble
1942-1943	Dave C. Harrell	1976-1977	P. David Cate
1943-1944	K. K. "Bob" Spooner	1977-1978	Sarah Childress
1944-1945	L. R. McFarland	1978-1979	Les Aultman
1945-1946	J. B. Story	1979-1980	Philip R. Reeves
1946-1947	Frederic F. Mellen	1980-1981	Marshall Kern
1947-1948	H. Lee Spyrès	1981-1982	Stephen Oivanki
	Robert D. Sprague	1982- 1983	James W. "Buddy" Twiner
1948-1949	Robert D. Sprague	1983- 1984	Charles H. Williams
1949-1950	E. T. ""Mike" Monsour	1984- 1985	C. Kip Ferns
1950-1951	J. Tate Clark	1985-1986	Steven S. Walkinshaw
	Charles E. Buck	1986-1987	J. R. ""Bob" White
1951-1952	George W. Field	1987-1988	Harry Spooner
1952-1953	James L. Md11in, Jr.	1988-1989	Stanley King
1953-1954	Wilbur H. Knight	1989-1990	Stan Galicki
1954-1955	A. Ed Blanton	1990-1991	E. James Files, Jr.
1955-1956	Gilbert A. Talley	1991-1992	Stephen L. Ingram, Sr.
1956-1957	Ben Ploch	1992-1993	Michael Noone/Stanley King
1957-1958	Emil Monsour	1993-1994	Brian Sims
1958-1959	Charles Brown	1994-1995	C. W. "Neil" Barnes
1959-1960	M. F. Kirby	1995-1996	Lester Aultman
1960-1961	Rudy Ewing	1996-1997	Jack S. Moody
1961-1962	Xavier M. Franscogna	1997-1998	George B. Vockroth
1962-1963	Robert B. Ross	1998-1999	Rick L. Ericksen
1963-1964	William A. Skees	1999-2000	Stanley King
	Marvin Oxley	2000-2001	John C. Marble
1964-1965	James F. Bollman	2001-2002	Andrew T. Sylte
1965-1966	Sankey L. Blanton	2002-2003	Aaron Lasker
1966-1967	Alan Jackson	2003-2004	John G. Cox
1967-1968	Julius M. Ridgway	2004-2005	James E. Starnes
1968-1969	Edward D. Minihan	2005-2006	Todd Hines
1969-1970	Kevin E. Cahill	2006-2007	Bob Schneeflock
1970-1971	John Lancaster	2007-2008	Tony Stuart
1971-1972	Larry Boland	2008-2009	Lisa Ivshin
1972-1973	Charles Barton	2009-2010	Joe Johnson
		2010-2011	Brian Sims