



Volume 60

No. 2

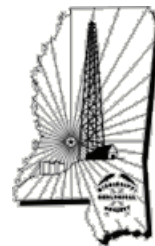
September 2011

MISSISSIPPI GEOLOGICAL SOCIETY *eBulletin*



missgeo.com

MGS 2010-2011 BOARD OF DIRECTORS



Officers

President	Stanley King	Independent	rox52doc@aol.com	(601) 842-3539
1st Vice President	Jim Files	Geodigital Consulting	jfgd@comcast	(601) 853-0701
2nd Vice President	Neil Barnes	Tellus Operating	nbarnes@tellusoperating.com	(601) 898-7444
Secretary	Matt Caton	Tellus Operating	mcaton@tellusoperating.com	(601) 898-7444
Treasurer	Bill Bagnall	Bureau of Land Management	william_bagnall@blm.gov	(601)-977-5417
Webmaster	Steve Walkinshaw	Vision Exploration	steve@visionexploration.com	(601) 607-3227
Advertising	Matt Caton	Tellus Operating	mcaton@tellusoperating.com	(601) 898-7444
Editor	Joe Johnson	Tellus Operating	mgs@treetop.us.com	(601) 898-7444

Boland Scholarship

President	Stanley King	Independent		(601) 842-3539
Secretary	Dave Cate	Pruet Oil		(601) 948-5279
Members	Ray Lewand Tony Stuart James Starnes Bob Schneeflock	Venture Oil & Gas DEQ Geodigital Consulting		(601) 428-7725 (601) 853-0701

Honorary Membership

Chairman	Charles H. Williams, Jr.	Vaughey & Vaughey		(601) 982-1212
Members	Dudley J. Hughes E. Ralph Hines Jerry Zoble	Hughes South Corp. Moon-Hines Independent		(601) 420-9892 (601) 572-8300

MGS Representatives

AAPG	Maurice Birdwell	Independent		(601) 936-6939
GCAGS	Danny Harrelson	U.S. Army Engineers R&D Center		(601) 634-2685

Other

Environmental Section	Ken Ruckstuhl	Environmental Mgt. Serv.		(601) 992-8233
Historian	Stanley King	Independent		(601) 842-3539

PRESIDENT'S LETTER

Stanley King

Greetings to all!

From the looks of things at the Fall Barbeque (or BBQ, if you prefer) a good time was had by all, as they say. I would like to again thank our sponsors for the barbeque and ask that you, too, let them know your appreciation for supporting your Society.

It looks like Neil is lining up some good speakers this year and our first one will be Art Johnson, President and Chief of Exploration for Hydrate Energy International as well as energy consultant in the US and around the world. His talk is entitled 'Gas Hydrate: A Huge Emerging Energy Resource' and should prove to be quite interesting, especially in light of the role that some believe gas hydrates played in the Deepwater Horizon explosion and tragedy. Details are found elsewhere in this bulletin, so mark your calendar and plan to attend.

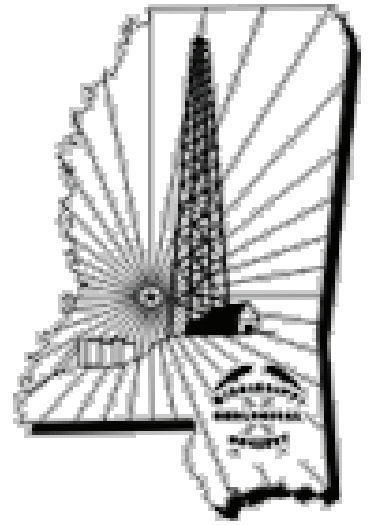
As you probably have heard by now, the 61st annual GCAGS convention that was slated for Veracruz, Mexico, has been cancelled. I'm not sure of the exact cause or causes, but I would imagine it had to do with lagging registration. The annual board meeting of GCAGS will be held in mid-October and I'm sure more details will come to light as well as planning for the 2012 convention which will take place in Austin, Texas.

Your officers will, in the very near future, begin an assessment of our publications and the need for updates/new formats, etc. I'm not sure at this point that we are actually contemplating a new "Red Book" (or is it one word?) but we are going to look at formats in which our publications are offered, as well as revisions. Your input is welcome—contact me or any of the other officers and let us know your thoughts. Thank you.

Finding myself in the midst of a 'senior moment' I am at a complete loss as to what else I had to share with you. So, rather than waste any more of your time, I'll close and wait for it to come to me tonight about 2 AM. See you at the luncheon!

Satis verborem

Stanley King



MGS

In This Issue:

Meetings Schedule

Monthly Speaker Info

JYC Information

A Good Read

Various Information

MGS Membership

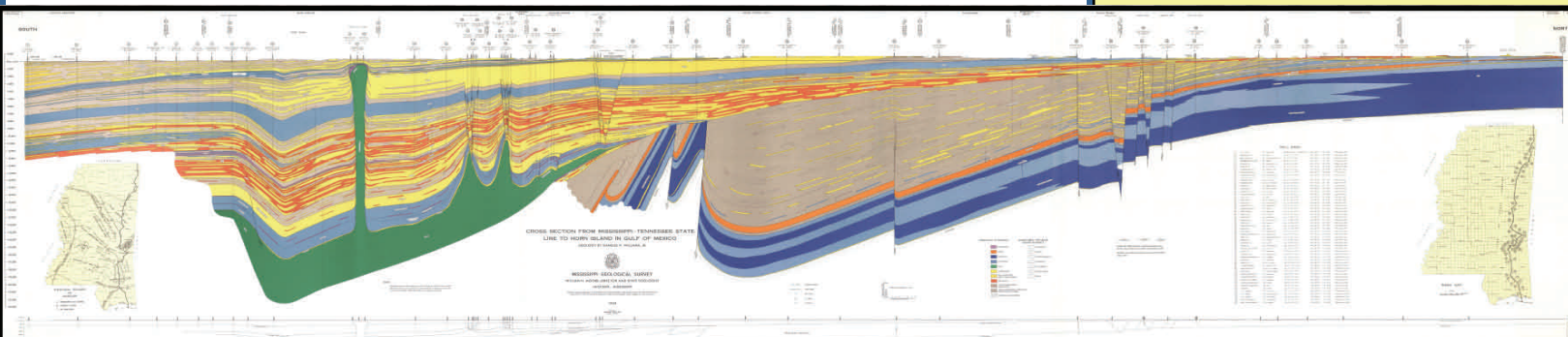
Application

Members in good standing.

MGS Advertising Notice

**MGS Boland Scholarship
Fund**

MGS Honorary Members



MGS MEETING SCHEDULE

When	What/Who	Where
September 8, 2011	Fall BBQ	Jackson Yacht Club-5:30pm
October 13, 2011	Gas Hydrate: A Huge Emerging Energy Resource Art Johnson: Hydrate Energy International	River Hills – 11:30am
November 9, 2011	The Jurassic Norphlet Formation of the Deep Water Eastern Gulf of Mexico: A Revisit of the Sedimentology of Aeolian Systems & Comparisons to both the Modern Namib Desert and Ancient Cedar Mesa Analogues: John B. Wagner*	River Hills – 11:30am
December ?, 2011	Christmas Party and Dance	Colonial Country Club
January 12, 2012	TBD	River Hills – 11:30am
February 9, 2012	TBD	River Hills – 11:30am
March 8, 2012	TBD	River Hills – 11:30am
April 12, 2012	Boland Scholarship Awards	River Hills – 11:30am
May 10, 2012	Spring Fling	Jackson Yacht Club– 5:30pm



OFFICERS MEETINGS

August 4, 2011

September 1, 2011

October 6, 2011

November 3, 2011

December 1, 2011

January 5, 2012

February 2, 2012

March 1, 2012

April 5, 2012

May 3, 2012

MGS LUNCHEON SPEAKER:

Gas Hydrate: A Huge Emerging Energy Resource

Art Johnson
Hydrate Energy International
Kenner, Louisiana

Gas hydrates are naturally occurring “ice-like” combinations of water and natural gas (mainly methane) that form under conditions of high pressure and low temperature. Gas hydrates are known to be widespread in permafrost regions and beneath the sea in sediments of outer continental margins. It is generally accepted that the amount of natural gas contained in the world's gas hydrate accumulations greatly exceeds the volume of known conventional gas reserves, and there is growing evidence that gas hydrates can be commercially produced with existing conventional oil and gas production technology. The global resource potential of gas hydrate is in the range of thousands of trillion cubic feet (Tcf). By comparison, the current annual global demand for natural gas is approximately 117 Tcf. Producing natural gas from hydrate will involve “dissociating” it, converting back to gas and water by heating it and/or depressurizing it.

The Deepwater Horizon explosion has brought gas hydrate into the news in the past year. Some of the reports are accurate, while others convey serious misinformation. It is unlikely that gas hydrate dissociation played a role in the explosion and fire; however gas hydrate formation complicated efforts to control the oil spill.

Art Johnson Bio

Art Johnson is President and Chief of Exploration for Hydrate Energy International and is engaged in energy consulting in the U.S. and throughout the world. Prior to forming HEI in 2002, Art was a geologist with Chevron for 25 years.

Art is a Past-President of New Orleans Geological Society. He has advised Congress and the White House on energy issues since 1997, and served on a federal committee advising the Secretary of Energy from 2001 to 2010, chairing the committee from 2001 to 2006. He has an on-going role coordinating the research efforts of industry, universities, and government agencies. Art has been appointed as a Lead Analyst for the “Global Energy Assessment”, an international project supported by the World Bank, UN organizations, and national governments.

Art has published over 60 papers and articles, along with several books. His recent publications include “Economic Geology of Natural Gas Hydrate”, “Alternative Energy and Fuels Technology”, and “AAPG Memoir 89. Articles in press include topics on energy conversion, global resource estimation, and the geology of Mars.

Art is the general chairman for the 2013 New Orleans GCAGS convention.

Let's talk Unconventional in and around Mississippi:

Tuscaloosa Marine Shale:

Tuscaloosa Marine Shale Strategies

Early in the TMS play, some diverse strategies can already be determined:

Location:

- Devon: Updip, Middip; mostly in LA
- Encana: Updip, some Middip; LA and MS
- Indigo Minerals: aggregate large block around existing minerals in LA
- Goodrich: scattered "islands" across LA and MS
- EOG: stealth mode; mostly Updip, some Middip

Drilling:

- Devon: laterals oriented parallel to dip; lengths: 4840'-6540'
- Encana: laterals oriented oblique to dip (~15 degrees); lengths: 6738'-6941'
- Indigo Minerals: laterals oriented oblique to dip (~5 degrees); length: 4250'
- Goodrich: "2nd mouse gets the cheese"?
- EOG: "2nd mouse gets the cheese"?

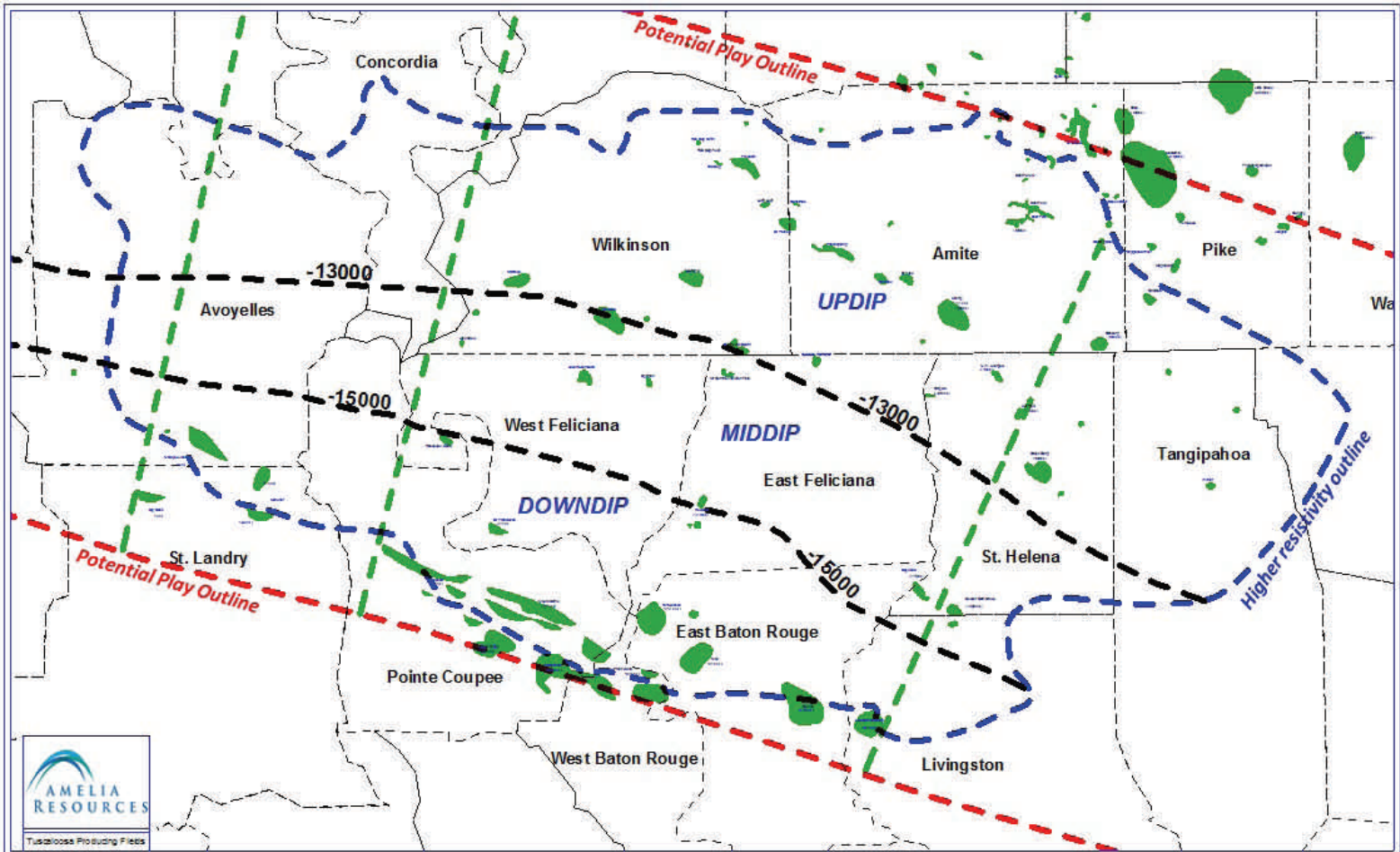
Evaluation:

- Devon: drill vertical "science" well 1st and obtain conventional core
- Encana: re-enter existing horizontal wellbore and complete; obtain conventional core in the first new horizontal drill
- Indigo Minerals: drill vertical "science" well 1st and obtain conventional core

Unit Size:

- Devon: 720-880 acres (square, rectangular)
- Encana: 1030-1074 acres (rectangular)

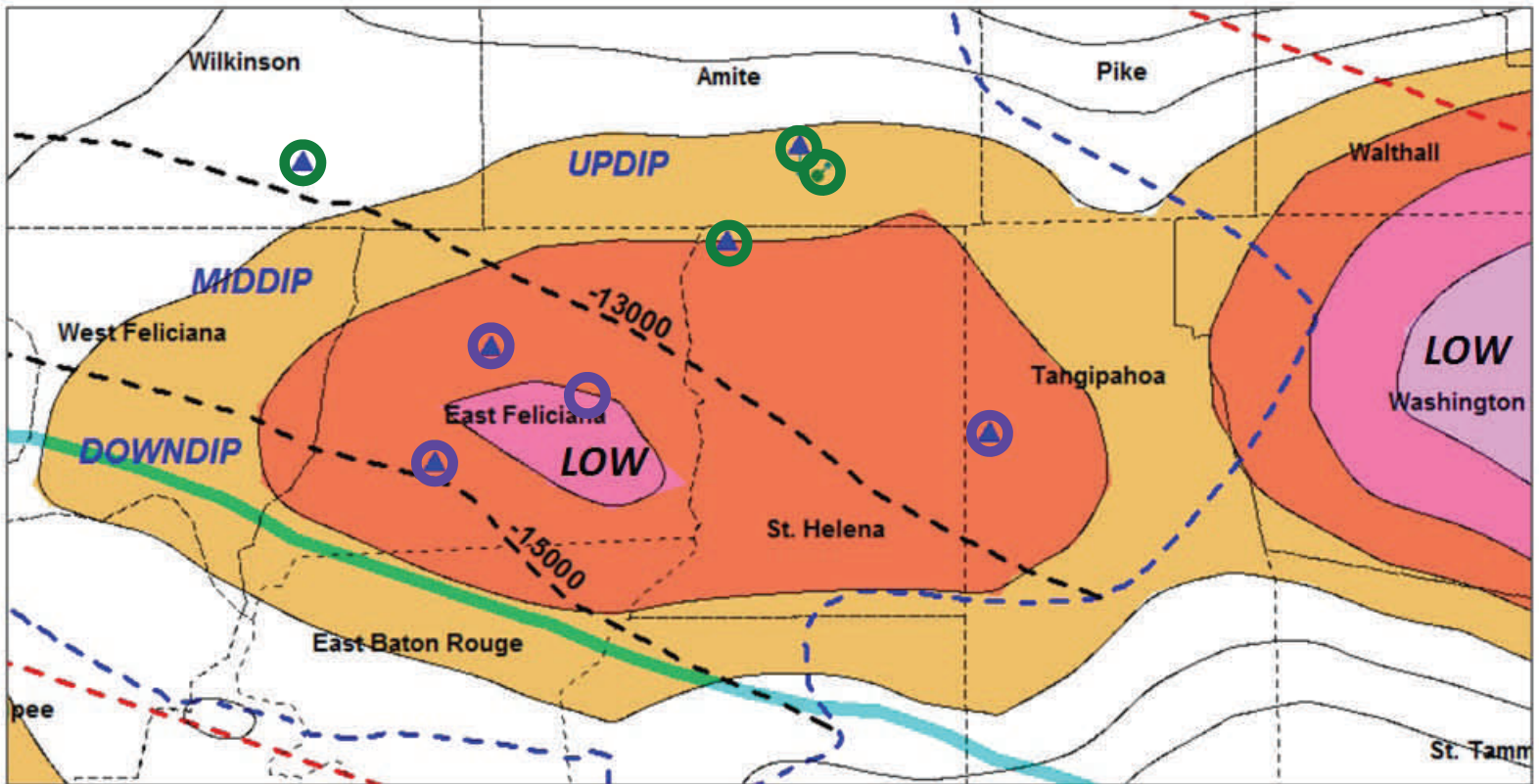
SOURCE: <http://www.tuscaloosatrend.blogspot.com/>



MAP SHOWING POSITION OF UPDIP, MIDDIP AND DOWNDIP
 SOURCE: <http://tuscaloosatrend.blogspot.com>

Bouguer Gravity

Current Tuscaloosa Marine Shale Locations



www.ameliarresources.com

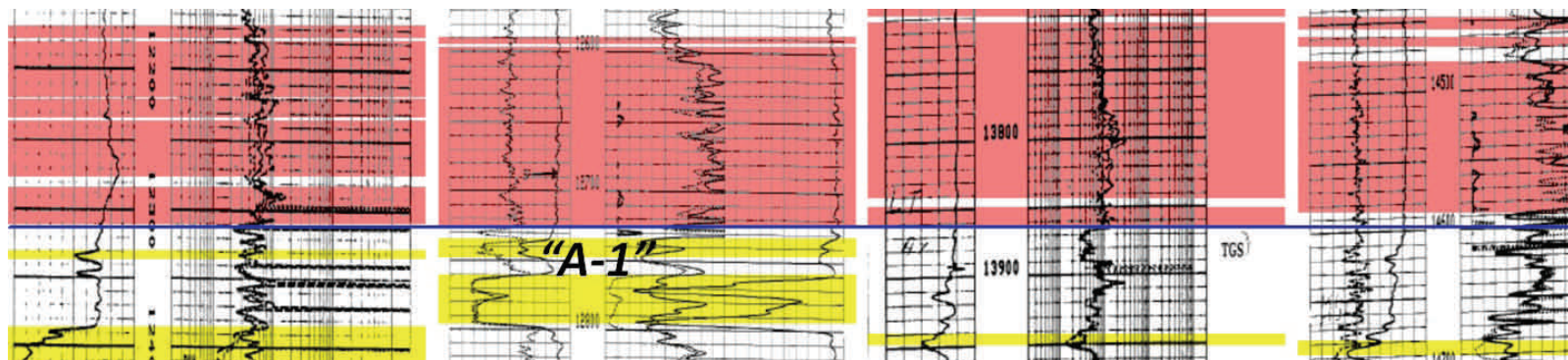
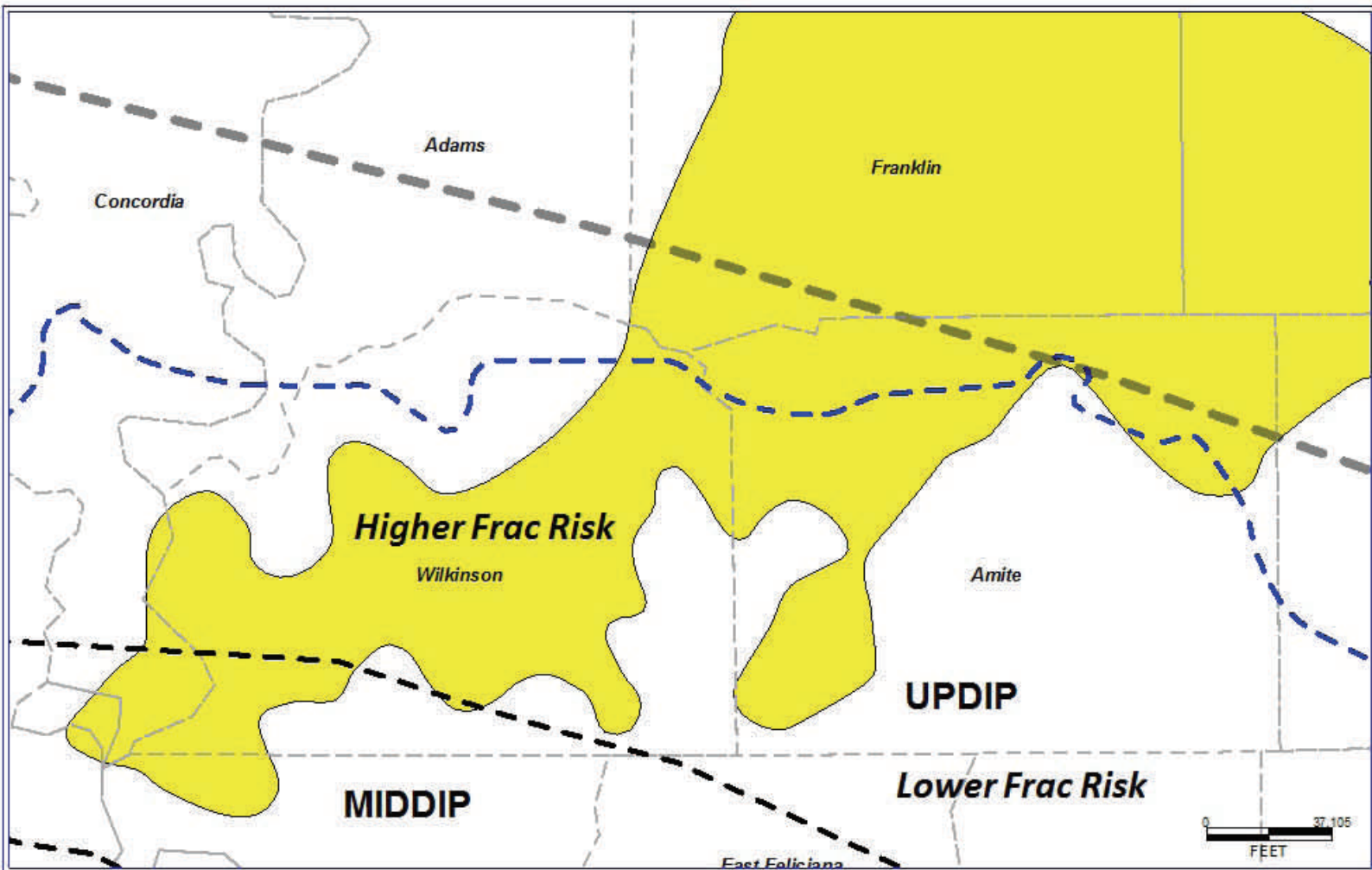


www.tuscaloosatrend.blogspot.com

-  DEVON ENERGY
-  ENCANA OIL & GAS

Hydraulic Fracturing Risks

Tuscaloosa A-1 Delta



STRIKE TRENDING STRATIGRAPHIC CROSS-SECTION (DATUM: BASE OF TMS)

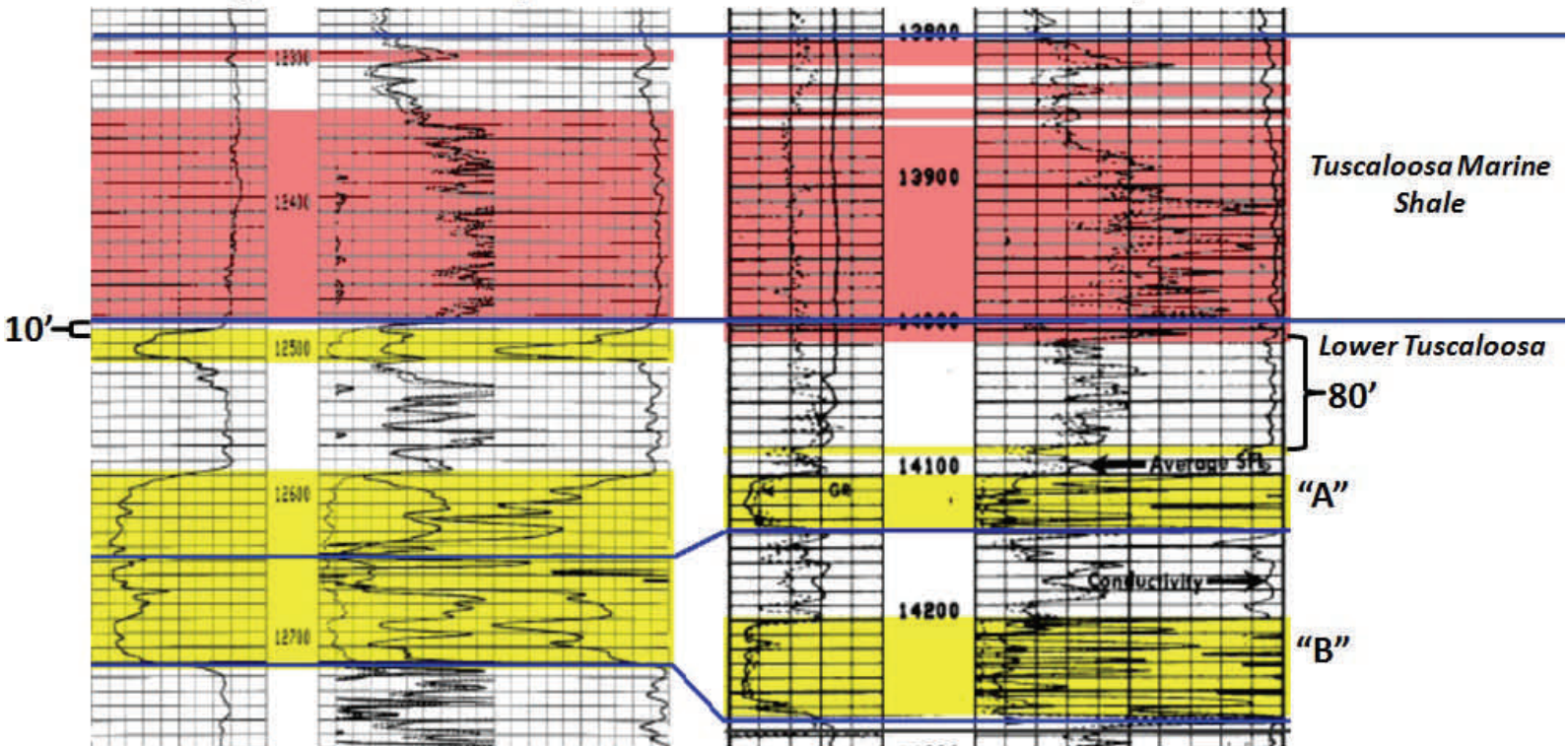
SOURCE: <http://www.tuscaloosatrend.blogspot.com/>

Hydraulic Fracturing Risks

Lower Tuscaloosa Sands – Water Wet

High Risk Example

Low Risk Example



Let's talk Unconventional in and around Mississippi:

Lower Smackover Brown Dense (LSBD):

LEASING ACTIVITY:

- Not much to talk about east of the Mississippi River besides leasing activity.
- Currently all drilling and permitting activity is occurring in southern AR and northern LA.
- Southwestern Energy has amassed a very large acreage position (~750,000 acres) trending NW-SE from southern Arkansas through northern Louisiana to western Mississippi (Rumored to be SWN in MS). They have several wells ongoing.
- SWN has taken leases under several company names. **Rumored** to be Triad Land Services (AR), T.S. Dudley (LA), Lunar Resources (MS) and Solar Resources (MS). (I am sure there are others)
- **Rumored** that speculators have taken acreage positions in MS.
- Counties in MS that have seen increased courthouse activity are Sharkey, Issaquena, Humphreys and Yazoo.
- Devon Energy has amassed ~ 40,000 acres in northern LA and are currently drilling a well in Morehouse PH.
- Dan Hughes et.al. is rumored to have amassed a very large position throughout southern AR. and in central MS., north of the Mississippi Salt Basin margin.

DRILLING ACTIVITY:

Southwestern Energy:

Robertson 1-15H– Claiborne PH., LA

- ~3700' Lateral
- MD= 13020

Dick James 1-1H– Union CO., AR

- 4600' Lateral
- MD= 13800'
- TVD= 9000'

Garrett 7-23-5H-Claiborne PH., LA

- L SMK RA SUA
- 8300' Lateral
- MD= 20200'
- TVD= 11000'

Ora Field Proposed 1280 Acre Unit– Union PH., LA

(Cont.)

Devon Energy:

Crossett 31 #1– Morehouse PH., LA

- Vertical Test
- MD= 8350

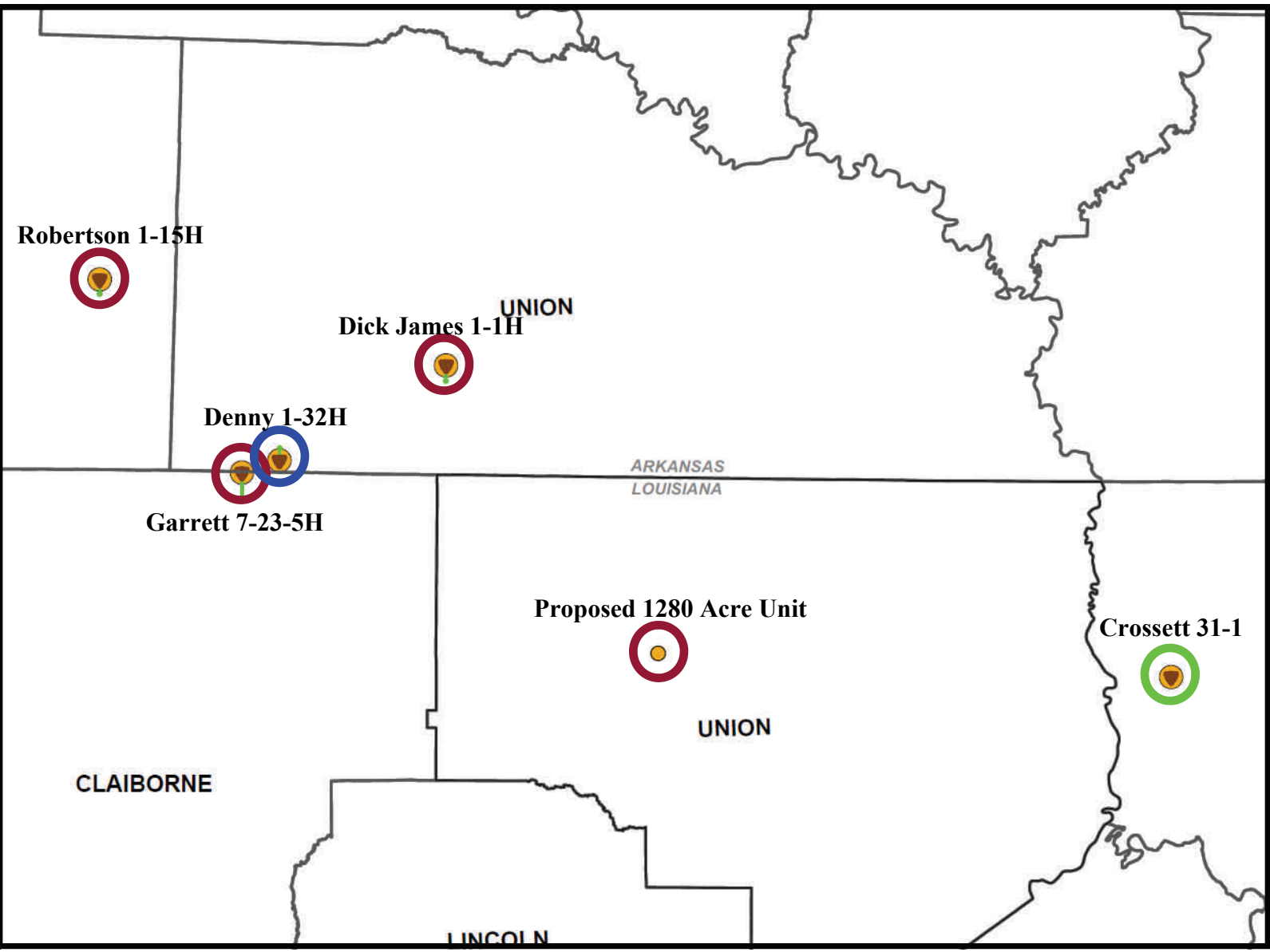
JW Operating:

Denny 1-32H– Union CO., AR

- 3500' Lateral
- MD= 13400'
- Drilled in 2/2011
- 641 Acre Drilling Unit

It is still too early in the play to draw any real conclusions. However one thing is for sure, the LSBDD will present operators with a list of issues including: H₂S (not typically seen in most resource plays), low to no matrix porosity, large existing HBP acreage positions.

If you have info that you would like to add to this discussion please email me at mgs@treetop.us.com.



-  Southwestern Energy
-  Devon Energy
-  JW Operating

*LSBD Base Map Showing Drilling/Drilled Wells & Locations
SOURCE: MGS Editor*



Standing left to right, Larry Baria, Dr. Charles Neill, Hindman Doxey, Mike Harmount and George Vockroth (winner of the wet t-shirt contest).
Exuma, Bahamas geology field trip, 1997.



AEG Field Trip Notice

The Association of Environmental and Engineering Geologists (AEG) invites you to mark your calendar for Saturday, October 29, 2011 for a field trip to explore how geology and geologic engineering played a role in the siege of Vicksburg, Mississippi. We will ride as a group in an air conditioned bus to each stop along the way

WHAT: AEG Lower Mississippi Valley Section Field Trip, Vicksburg, MS

SUBJECT: Engineering Geology of the Siege of Vicksburg

WHERE: Vicksburg National Military Park and Surrounding areas

DATES: 1) Optional Social Gathering and early sign-in - 7:00 pm Fri. Oct. 28th
2) AEG Lower MS Valley Section Meeting - 7:30 pm Fri. Oct. 28th
3) Field Trip - Saturday, 9:00 a.m. October 29, 2011

WHO IS INVITED: Members, Students, and all interested parties

The tour will start at 9:00 a.m. and continue until 3:00 pm (a box lunch will be provided.) The total trip, including a working lunch lecture, will provide 6 hours of CEU/PDU credits.

Trip Fee includes bus, tour guide, box lunch, and guide book: Members and Spouses \$50, Non-Members and Guests \$60, Students \$20.

Please Register Online at: <http://anyvite.com/rfobhkhajs>

*** More Details will be provided as they become available*** *Any questions? contact Ken Ruckstuhl*

2011 AEG LMVS Officers:

Ken Ruckstuhl - Chair (kruckstuhl@env-mgt.com)

Mark Teague - Vice-Chair (New Email: mteague@teacogeo.com) or phone (601) 260-3237

Donna Schmitz - Secretary (donnas@ext.msstate.edu)

Rebecca Buell - Treasurer (nrbuell@yahoo.com)

Evelyn Villanueva - Membership Chair (Evelyn.Villanueva@erdc.usace.army.mil)

CANCELLED

Gulf Coast Association of Geological Societies



61st GCAGS Annual Convention
October 16 - 19, 2011
Veracruz, Mexico

GULF COAST ASSOCIATION OF GEOLOGICAL SOCIETIES GOM GEOLOGY GOES BEYOND BORDERS!

An ancient Aztec icon, **OLLIN**, inspired the 61st GCAGS Annual Convention. Ollin represents transformation and creative evolution and also symbolizes the idea AMGP's geologists have about this Convention expressed by its theme: **"Sharing knowledge to add value"**. The convention features a first-class technical program in the relaxed ambiance of the port city of Veracruz.

For the very first time you will have a chance to attend a meeting offering an integrated technical program with an unabridged regional vision of the geology of the Gulf of Mexico.

- 155 technical presentations featuring Deepwater Setting, Geology, and Economics: 95 from southern and western GOM, 53 from northern GOM, and 7 from Cuba.
- Symposium: "Jurassic Regional Framework and Reservoirs in the Gulf of Mexico".
- A luncheon conference.
- 6 short courses including *Fractured reservoirs with examples from southern Mexico and Petroleum provinces of Mexico*.
- 3 field trips to classic localities of eastern and southeastern Mexico: *Chicontepec, Sierra Madre Oriental, and Sierra de Chiapas*.
- Exhibition including networking events.

Student activities and spouse/guest programs are an integral part of the Convention.

DON'T MISS THIS LANDMARK CONVENTION!

For more information visit:

www.gcags2011.com

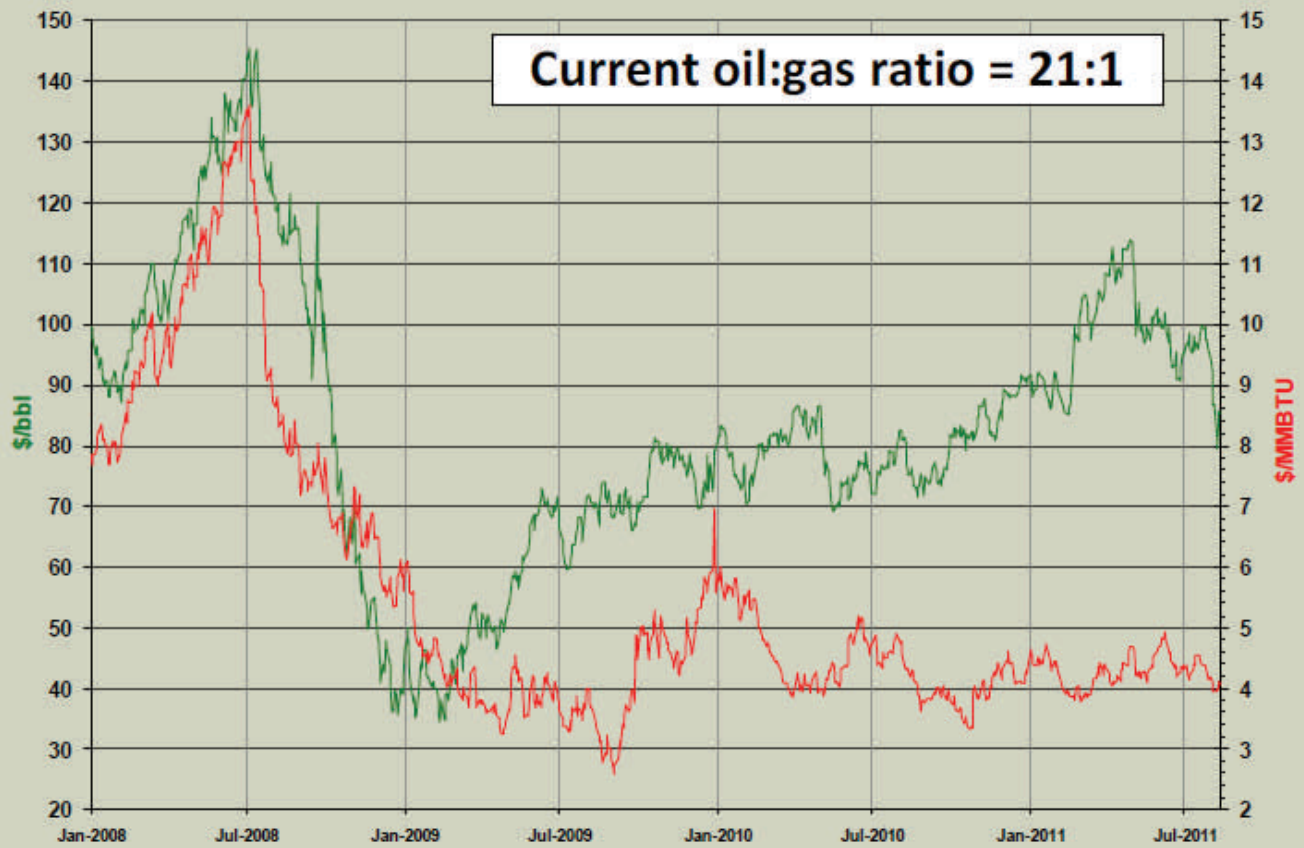
We look forward to seeing you all in Veracruz!



Hosted by the
Asociación Mexicana
de Geólogos Petroleros



NYMEX DAILY SPOT



Current Oil & Gas Prices	OIL	GAS	OIL-12-Mo Strip	GAS-12-Mo Strip
NYMEX Close Friday 8/12/11	\$ 85.38	\$ 4.06	\$ 85.89	\$ 4.20
ICE* current(8/15 @ 9:05 AM)	\$ 86.86	\$ 3.97	*Intercontinental Commodities Exchange	

SOURCE: Oil & Gas Asset Clearinghouse

TURN IT TO THE RIGHT!



Do you have any articles that you want to share with the MGS membership?

Something you read online or something you wrote.

Please email them to the MGS Editor at mgs@treetop.us.com.

We would like to add more content from the membership.

MGS BOLAND SCHOLARSHIP FUND

The Society's L. F. Boland Scholarship Fund is open to donations (tax deductible) year round. Your contribution will help the Society recognize and reward outstanding earth science students at its annual Honors Day meeting on April 7th, 2011.

Since inception in 1980, the Society has honored 104 students with the Boland Award. If you would like to contribute, please contact Dave Cate at 601-718-9397 or mail your check (L. F. Boland Scholarship Fund) to him at 217 W. Capitol St., Jackson, MS 39201.

The MGS gratefully acknowledges the following contributors to the L. F. Boland Scholarship Fund for the 2011-2012 year.

Maurice Birdwell Kieth Gourges
Maurice Meylan Philip Reeves
Julius Ridgway
Chris Franks
Donnie Lambert
Ken McCarley
Vaughan Watkins

MGS Honorary Members

Esther Applin*	Paul Applin*	Lawrence F. Boland*
Verne Culbertson *	H. Leroy Francis*	Jim Furrh*
David C. Harrell*	Oleta R. Harrell*	Ralph Hines
Dudley J. Hughes	Urban B. Hughes*	Wendell B. Johnson *
Walter P. Jones*	Harold Karges*	Wilbur H. Knight*
Winnie McGlammery*	Thomas McGlothin*	Frederic F. Mellen*
Maurice E. Miesse*	Emil Monsour*	William H. Moore*
Marvin E. Norman*	Marvin L. Oxley*	Richard R. Priddy*
Thurston Connell Rader*	Baxter Smith*	Harry V. Spooner
Henry Toler*	H. Vaughn Watkins	Stewart W. Welch
Charles H. Williams	Jerry Zoble	Julius Ridgeway

* deceased

MEMBERSHIP APPLICATION / RENEWAL FORM

MISSISSIPPI GEOLOGICAL SOCIETY

P.O. BOX 422, JACKSON, MISSISSIPPI 39205-0422

2011-2012

Membership year is June through May

New Membership (\$20/yr)_____ Renewal (\$20/yr)_____ Student (FREE)_____ Associate (\$20/yr)_____

Boland Scholarship Fund Donation \$ _____ Total Amount Enclosed \$ _____

Last Name: _____ First: _____ MI: _____

Mailing Address: _____

Office Phone: _____ Home Phone: _____ FAX: _____

E-mail Address: _____

College/University Attended: _____

Degree(s) Obtained and Year(s) Awarded: _____

Professional Associations, Certifications, & Licenses: _____

The following are MGS members in good standing

Ken Adams
Bill Bagnall (O)
Neil Barnes (O)
Maurice Birdwell
Randy Bissell
Matt Caton (O)
Dave Easom
Jim Files (O)
Max Gilpin
Andrew Head
I Meade Hufford
Lisa Ivshin
Dustin Johnson
Lars Johnson
Joe Johnson (O)
Stanley King (O)
Maurice Meylan
Charlie Morrison
Mike Rasmussen
Philip Reeves
Gail Russell
Winston Russell
Drew Sills
James Starnes
John Sullivan
Andy Sylte
Tom Sylte
David Thompson
Steve Walkinshaw (O)
Joe White

(O) - officer

(H) - Honorary

MGS ADVERTISING ORDER FORM

September 2010 – May 2011

I. Bulletin Advertisements:

<u>Size</u>	<u>Rate/Year</u>	<u>Amt. Remitted</u>
Full Page Ad (6" x 8")	\$500	\$ _____
1/2 Page Ad (6" x 4")	\$300	\$ _____
1/4 Page Ad (3" x 4")	\$200	\$ _____
Business Card Ad (1 1/2" x 3")	\$100	\$ _____
Professional Listing (1/2" x 3")	\$ 50	\$ _____

II. Web Page Advertisements (www.missgeo.com):

<u>Type of Web Page Ad</u>	<u>Rate/Year</u>	<u>Amt. Remitted</u>
Front Page Sponsor (Banner Ad – limit of 5)	\$500	\$ _____
Second Page Banner Ad	\$250	\$ _____
Professional Listing/Link	\$100	\$ _____

(Note: Please contact Steve Walkinshaw at (601) 607-3227 or mail@visionexploration.com for details concerning placing your ad on the MGS web site.)

Total Remitted \$ _____

Please make checks payable to the Mississippi Geological Society. If you have any questions, contact Matt Caton at (601) 898-7444 or mcaton@tellusoperating.com

SEI®

SEISMIC EXCHANGE, INC.

201 St. Charles Ave., Suite 4300
New Orleans, LA 70170-4300
(504) 581-7153 • Fax (504) 581-9591

HOWARD PATTON

PRUET OIL COMPANY, LLC

OIL & GAS EXPLORATION

**217 WEST CAPITOL STREET
JACKSON, MS 39201**

OFFICE: (601) 948-5279 FAX: (601) 944-1281

W. LESTER AULTMAN

125 South Congress St., Suite 1212, Jackson, MS 39201
Office (601) 353-2738 Res. (601) 924-4830

VANTAGE OIL COMPANY

7170 Tank Road (601) 878-0593
Terry, MS 39170



Day Dreams Resources, LLC

Jerry P. Ogden

**OIL AND GAS EXPLORATION AND PRODUCTION
CONSULTING PETROLEUM ENGINEER**

Jerry P. Ogden, Pet. Eng.
P. O. Box 101
Natchez, MS 39121
email: ogdenjerry@bellsouth.net

Office (601) 446-8105
Fax (601) 446-8844
Cell (601) 807-1000



Marlin

EXPLORATION, L.L.C.

401 Edwards Street, Suite 1200
Shreveport, LA 71101

P.O. Box 1367
Shreveport, LA 71164

office: (318) 222-8406
fax: (318) 222-6061
email: mei@marlinexploration.com

Jon Q=Petersen
President

S. Cody Lenert
Geologist

Autie T. Orjias
V.P./Land Manager

Ryan Q=Petersen
Land

Dean Giles
Secretary/Treasurer

Rhonda White
Admin. Assistant

Joe R. White, J r.
Chief Geologist



ENERGY DRILLING COMPANY [®]

CONTRACT DRILLING 3000 – 15,000 FEET
MS-AL-FL-ARK-LA-TEX

Pat Burns, Jr.

Jody Helbling

Nestor Navarro

601-446-5259

(Fax)601-446-8607

P. O. Box 905

413 Liberty Rd.

Natchez, MS 39121



OPERATING GROUP, LLC

OPERATING GROUP, LLC

602 Crescent Place, Suite 100

Ridgeland, MS 39157

601-898-7444 Voice

601-898-7446 Fax

BRIAN SIMS

EXPLOITATION GEOLOGIC MANAGER

Email: bsims@tellusoperating.com

OWLCO

Oil Well Logging Company
P. O. Box 1692
Madison, MS 39130
(601) 477-8315



MOCO INC.
The Mississippi Oil Company

MICHAEL L. BLACKWELL
H. DON NOBLITT

603 Northpark Drive • Ridgeland, MS 39157
(601) 957-3550



Karl J. Kaufmann
President

Suite B
546 Keyway Drive
Jackson, MS 39232

601-936-3601
Fax 601-936-3646
coukauf@aol.com

BLAIR & BONDURANT, P.A.
ATTORNEYS AT LAW

WILLIAM F. BLAIR

P.O. Box 321423 1368 Old Fannin Road
Jackson, MS 39232 Suite 300
Telephone: (601) 992-4477 Brandon, MS 39047
Telecopier: (601) 992-9189 Email:



**TROPHY
PETROLEUM
CORPORATION**

100 N. Van Buren Street
Post Office Box 415
Carthage, MS 39051
(601) 298-0200 (601) 298-0201 Fax

E. Wayne Upchurch
President

**ARK-LA-TEX
LOG LIBRARY, INC.**

400 TRAVIS - SUITE 500
SHREVEPORT, LOUISIANA 71101-3113

Marie Pace
MANAGER

PHONE (318) 227-1641
FAX (318) 227-1642

BRUXOIL, INC.

DAVID K. BROOKS - PRESIDENT
RAYMOND A. HELFRICH - VICE PRESIDENT
DOROTHY M. JAUBERT

P. O. Box 16929
Jackson, MS 39236
(601) 981-5722
FAX: (601) 366-9490



GOX John G. Cox
Petroleum Geologist

John G. Cox
Geologist

601.978.1763
603 Northpark Drive, Suite 300 fax 601.952.0425
Ridgeland, Mississippi 39157 john_cox@bellsouth.net

MOON & HINES
OIL & GAS EXPLORATION

MOON-HINES-TIGRETT OPERATING CO., INC.
PROPERTY MANAGEMENT

P O BOX 3216
RIDGELAND, MS 39158

OFFICE (601) 572-8300 FAX (601) 572-8310



ROUNDTREE & ASSOCIATES, INC.
OIL AND GAS PRODUCTION
210 Trace Colony Park Drive,
Ridgeland, MS 39157
Phone (601) 355-4530

Boone  **Exploration, Inc.**

Lynn D. Boone
President

J.C. Carlisle
Vice President

21 Wire Road
P.O. Box 8660
Huntsville, TX 77340

Phone: 936-295-4066
Fax: 936-295-4042
Email: jcc9551@aol.com



KELTON OPERATING COMPANY, INC.
since 1953

605 SUN TRUST TOWER
220 W. GARDEN STREET
PENSACOLA, FL 32501
P.O. BOX 230
PENSACOLA, FL 32591

TELEPHONE
(850) 434-6830
FACSIMILE
(850) 434-6842

I. Meade Hufford, CPL
Owner-President

Energy Land Services

Oil & Gas Exploration

99 N. Post Oak Lane
Suite 6101
Houston, TX 77024
Phone: 713-888-0012
Cell: 713-705-7235
E-mail: hufford1913@aol.com
VA Phone: 804-438-5852

JULIUS M. RIDGWAY

COASTAL EXPLORATION, INC.

1437 OLD SQUARE ROAD, #104
JACKSON, MISSISSIPPI 39211

601-362-0502
FAX: 601-362-5397

SPOONER PETROLEUM COMPANY

210 East Capitol St., Suite 956
Jackson, Mississippi 39201

**Oil & Gas Production & Exploration
Contract Operations**

601-969-1831

JAMES B. FURRH, Jr., Inc.

Oil & Gas Exploration

4450 Old Canton Road, Suite 205,
Jackson, MS 39211
Phone (601) 982-9393 Fax (601) 982-9785

E. GEOFFREY JEFFREYS

Petroleum Consultant

OIL, GAS AND MINERAL APPRAISALS

115 Fairway Drive
Daphne, AL 36526
egjeffreys@aol.com

Off (251) 621-1850
Fx (251) 621-1630
Cell (251) 709-7919

Bryant Miller

1837 Peachtree Street
Jackson, MS 39202

bryantgmiller@bryantgmiller.com

ENERGEN
RESOURCES

President & COO

John Richardson

Senior Vice President

Operations

Paul Sparks

General Manager

Acquisitions & Engineering

Gene Cash

General Manager

Geology

Ron Tisdale

General Manager

Land

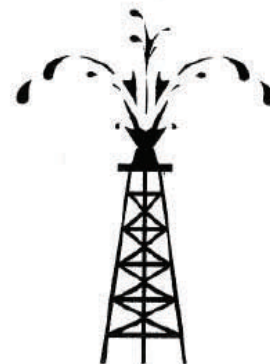
Paul Rote

(205)326-2721

Joseph H. McDuff
Geologist

351 Chapel Loop
Mandeville, LA 70471
985.845.9430

jhmcduff@charter.net



**Diversified Land
Management, Inc.**

**PERMIT ACQUISITION
SPECIALISTS**

Jack Tate

President

Office: 337.886.0060

Fax: 337.886.0064

Cell: 601.259.1366

email: geoagent46@aol.com

dmlnconline.com

"A company committed to excellence and achieving success while providing professional permitting acq. & project mngt. with the client's interests & concerns top priority"

Get More



from your Core

With reservoirs becoming increasingly complex, you need the most accurate information you can get to better understand your reservoir.

Weatherford Labs helps you get more from your core by combining an unsurpassed global team of geoscientists, engineers, technicians and researchers with the industry's most comprehensive, integrated laboratory services worldwide. From core analysis, sorption, geochemistry and isotopic composition to detailed basin modeling and comprehensive data packages, we provide you with real reservoir rock and fluid information that hasn't been distilled by a simulator or iterated by software.

We call it "The Ground Truth™" – giving you the accurate answers you need for better reservoir understanding. You'll call it a better return on your reservoir investment. To learn more, contact TheGroundTruth@weatherfordlabs.com.



Weatherford
LABORATORIES
weatherfordlabs.com

© 2011 Weatherford. All rights reserved. Trade dress proprietary and patented Weatherford technology.

Denbury

5320 Legacy Drive
Plano, TX 75024

Denbury Resources, Inc.

Denbury Resources, Inc. is a growing independent oil and gas company. The Company is the largest oil and natural gas operator in Mississippi and Montana, owns the largest reserves of CO₂ used for tertiary oil recovery east of the Mississippi River, and holds significant operating acreage in the Rockies, Permian Basin, Mid-Continent and Gulf Coast. The Company's goal is to increase the value of acquired properties through a combination of exploration, drilling and proven engineering extraction practices, with its most significant emphasis relating to tertiary recovery operations.

NYSE: DNR
www.denbury.com

Denbury Resources Inc.

**BRANCHING
OUT**

MISSISSIPPI GEOLOGICAL SOCIETY

PAST PRESIDENTS

1939-1940	Henry N. Toler	1973-1974	Larry Walter
1940-1941	Urban B. Hughes	1974-1975	W. E. "Gene" Taylor
1941-1942	J. Tom McGlothlin	1975-1976	Jerry E. Zoble
1942-1943	Dave C. Harrell	1976-1977	P. David Cate
1943-1944	K. K. "Bob" Spooner	1977-1978	Sarah Childress
1944-1945	L. R. McFarland	1978-1979	Les Aultman
1945-1946	J. B. Story	1979-1980	Philip R. Reeves
1946-1947	Frederic F. Mellen	1980-1981	Marshall Kern
1947-1948	H. Lee Spyrès	1981-1982	Stephen Oivanki
	Robert D. Sprague	1982- 1983	James W. "Buddy" Twiner
1948-1949	Robert D. Sprague	1983- 1984	Charles H. Williams
1949-1950	E. T. "'Mike" Monsour	1984- 1985	C. Kip Ferns
1950-1951	J. Tate Clark	1985-1986	Steven S. Walkinshaw
	Charles E. Buck	1986-1987	J. R. "'Bob" White
1951-1952	George W. Field	1987-1988	Harry Spooner
1952-1953	James L. Md11in, Jr.	1988-1989	Stanley King
1953-1954	Wilbur H. Knight	1989-1990	Stan Galicki
1954-1955	A. Ed Blanton	1990-1991	E. James Files, Jr.
1955-1956	Gilbert A. Talley	1991-1992	Stephen L. Ingram, Sr.
1956-1957	Ben Ploch	1992-1993	Michael Noone/Stanley King
1957-1958	Emil Monsour	1993-1994	Brian Sims
1958-1959	Charles Brown	1994-1995	C. W. "Neil" Barnes
1959-1960	M. F. Kirby	1995-1996	Lester Aultman
1960-1961	Rudy Ewing	1996-1997	Jack S. Moody
1961-1962	Xavier M. Franscogna	1997-1998	George B. Vockroth
1962-1963	Robert B. Ross	1998-1999	Rick L. Ericksen
1963-1964	William A. Skees	1999-2000	Stanley King
	Marvin Oxley	2000-2001	John C. Marble
1964-1965	James F. Bollman	2001-2002	Andrew T. Sylte
1965-1966	Sankey L. Blanton	2002-2003	Aaron Lasker
1966-1967	Alan Jackson	2003-2004	John G. Cox
1967-1968	Julius M. Ridgway	2004-2005	James E. Starnes
1968-1969	Edward D. Minihan	2005-2006	Todd Hines
1969-1970	Kevin E. Cahill	2006-2007	Bob Schneeflock
1970-1971	John Lancaster	2007-2008	Tony Stuart
1971-1972	Larry Boland	2008-2009	Lisa Ivshin
1972-1973	Charles Barton	2009-2010	Joe Johnson
		2010-2011	Brian Sims