

# MISSISSIPPI GEOLOGICAL SOCIETY

*eBulletin*  
[missgeo.com](http://missgeo.com)



# MGS 2011-2012 BOARD OF DIRECTORS



## *Officers*

President	Stanley King	Independent	rox52doc@aol.com	(601) 842-3539
1st Vice President	Jim Files	Geodigital Consulting	jfgd@comcast	(601) 853-0701
2nd Vice President	Neil Barnes	Tellus Operating	nbarnes@tellusoperating.com	(601) 898-7444
Secretary	Matt Caton	Tellus Operating	mcaton@tellusoperating.com	(601) 898-7444
Treasurer	Bill Bagnall	Bureau of Land Management	william_bagnall@blm.gov	(601)-977-5417
Webmaster	Steve Walkinshaw	Vision Exploration	steve@visionexploration.com	(601) 607-3227
Advertising	Matt Caton	Tellus Operating	mcaton@tellusoperating.com	(601) 898-7444
Editor	Joe Johnson	Tellus Operating	mgs@treetop.us.com	(601) 898-7444

## *Boland Scholarship*

President	Jim Files	Geodigital Consulting		(601) 853-0701
Secretary	Dave Cate	Pruet Oil		(601) 948-5279
Members	Ray Lewand Tony Stuart James Starnes Bob Schneeflock	Venture Oil & Gas DEQ Geodigital Consulting		(601) 428-7725 (601) 853-0701

## *Honorary Membership*

Chairman	Charles H. Williams, Jr.	Vaughey & Vaughey		(601) 982-1212
Members	Dudley J. Hughes E. Ralph Hines Jerry Zoble	Hughes South Corp. Moon-Hines Independent		(601) 420-9892 (601) 572-8300

## *MGS Representatives*

AAPG	Maurice Birdwell	Independent		(601) 936-6939
GCAGS	Danny Harrelson	U.S. Army Engineers R&D Center		(601) 634-2685

## *Other*

Environmental Section	Ken Ruckstuhl	Environmental Mgt. Serv.		(601) 992-8233
Historian	Stanley King	Independent		(601) 842-3539

# PRESIDENT'S LETTER

*Stanley King*



I can say most assuredly that Spring is here—the ‘greening up’ of everything and the thunderstorms that dump three inches of rain in 30 minutes are vivid evidence of that fact. Spring also means that it won't be long until the MGS year will close with the Spring Fling and this ‘administration’ will be history. Before that, however, we will still have a few things to take care of.

This month's luncheon meeting will be held in our familiar haunt, River Hills Club, at 11:30 on Thursday, April 12<sup>th</sup>. During this regular meeting we will have the privilege of recognizing four outstanding geoscience students by the awarding of Boland Scholarships. Though many excellent students were considered for this honor, these four finalists best represent hard work and the future of our profession. Please mark your calendar (be it hard copy or iphone) and plan to attend.

As you have no doubt seen the notification in previous bulletins this year, as of June, 2012, MGS will no longer mail out hard copy bulletins. We are not trying to exclude anyone but the cost of printing and mailing the bulletin dictates that we conclude this practice. I am aware that some will feel left out, that some may have to join the 21<sup>st</sup> century and get email, and that some will call us \*?!\*^&%@\$ for no longer publishing. That comes with the territory. I am fairly sure that we would continue publishing hard copies if someone would like to underwrite the over four dollars per copy cost of the bulletin for every month. Lacking that, I urge you now, if you are still getting the print edition, to make plans for an alternative. Your Society's officers are open to suggestions as to what that is and how to make it happen.

GCAGS will hold its mid-year board meeting in Austin in the middle of this month. I will report to you here next month what business was transacted in that gathering.

Donning my MGS Historian hat for a second, I invite you to check your answers to last month's oil patch history quiz with the answers to same, which appear herein. You DID read it last month, didn't you??

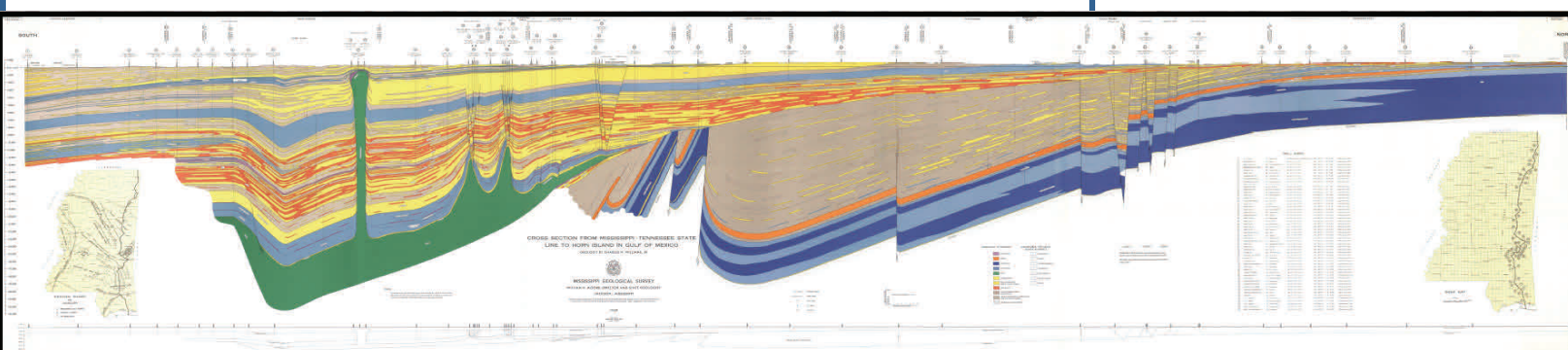
See you at the meeting,

Stanley King

SIGNIFICANT OIL AND GAS POOLS AND FORMATIONS OF MISSISSIPPI								
MISSISSIPPI OFFICE OF GEOLOGY								
1992								
By Rick L. Erickson and Sandra Doney								
(Data current to 01/01/92)								
FORMATION	SERIES	GROUP	SIGNIFICANT PRODUCING AND NONPRODUCING FORMATIONS (Number of Fields)	PRODUCING ZONES OR POOLS	RESERVOIR LITHOLOGY	TYPE FIELD		
CENOZOIC	Quaternary	Holocene						
		Pleistocene			nonproductive to date			
	Pliocene							
		Miocene						
	CRETACEOUS	Upper	Oligocene	Vicksburg	Frio (15)	Frio Gas Frio "C"	White Castle Independence	
			Jackson			nonproductive to date		
		Middle	Esene	Cockfield (2)	Cockfield			Brushburg
			Osborne	Sparta (28)	Sparta			Shanton
		Lower	Wilcox	Zepha (1)	Zepha			Kings
			Midway	Wilcox (262)	Wilcox	numerous localized reservoirs		Cranfield
MESOZOIC		Upper	Paleocene	Midway	Clayton			Camp Shelby
			Selma	Selma (18)	Selma	Selma Chalk		Jackson
		Middle	Eufaula	Eufaula (41)	Eufaula	Edgemoor Edgemoor Hawes Hawes Madison Madison Morrison Morrison Pawnee Pawnee Stevens		Cory Trinity Trinity Sharon Sharon Chaparral Arita Hedberg Sharon Trinity Trinity Fickens
			Duflon	Eagle Ford (2)	Edgemoor			Buxtonville
	Lower	Tuscaloosa	Upper Tuscaloosa (15)	Upper Tuscaloosa	nonproductive to date		Cranfield	
		Lower Tuscaloosa	Marine Shale	Lower Tuscaloosa			Liberty Liberty Brookhaven Brookhaven Little Creek Seneca Molokini Molokini Little Creek Brookhaven Brookhaven	
	PALEOZOIC	Upper	Washita - Fredericksburg	Dantzler (5)	Dantzler		W. Flat Ridge	
			Washita - Fredericksburg (42)	Washita - Fredericksburg	Washita Cuvias Merrill-Kennedy		Thompson's Crk. Anahy Puckett Baton	
		Middle	Comanchean	Polary (56)	Polary	Carroll McAlpin		Polary Ridge Woveland
			Trinity	Mooringsport (14)	Mooringsport			Valley Park
Lower		Trinity	Ferry Lake (1)	Ferry Lake	Anyhyle		Merit	
		Rodessa (78)	Rodessa "A" Rodessa "B" Wore	Rodessa	Col Harrison Rodessa "A" Rodessa "B" Wore		Marthville Marthville Merit West Raymond West Raymond Oak Grove	
Lower		Coshulian	James (4)	James La			W. Oakvale	
		Sligo (50)	Sligo	Sligo	Belley Belley Jennings Jennings Hosston		Pool Creek SoLo SoLo Marthville Marthville Diamond	
Lower		Coshulian	Hosston (81)	Hosston	Boon Difrent Farbes Farbes Hosston Hosston Hosston Hosston Josephine Jolly Lawn Shelby Steele		Boonville Hosston Creek Custer Custer Hosston Hook Hosston Creek Newson Newson Black Creek Magne Coney George Bossfield	
		Upper	Cotton Valley	Cotton Valley (43)	Cotton Valley		SoLo	
Lower	Hayneville (4)	Hayneville	Hayneville	Boy Springs Sand		Boy Springs		
	Buckner (11)	Buckner	Buckner	"X" Lime (Hordin Lime)		Boyer Church Morton W. Paulding		
Lower	Smackover (78)	Smackover	Smackover	Smackover A,B,C Upper Smackover Lower Smackover Smackover Lime Smackover Sand		Trinity E. Tolsonia Crk. Lake Utopia Lower Utopia Loring Johne		
	Norphet (14)	Norphet	Norphet	(Denkman)		Palmettoville		
Lower	Louisa Salt	Louisa Salt	Louisa Salt	nonproductive to date				
	Eagle Mills	Eagle Mills	Eagle Mills	nonproductive to date				
PERMIAN (Aspen)								
	Pennsylvanian	Pottsville (5)	Pottsville	Nason Nevins Busker		Corinne McKinley Creek Corinne		
PALEOZOIC	Mississippian	Chesterian	Portwood - Pennington (69)	Portwood Sellers Carter Sellers Abernathy		Corinne Walker Magle Branch Greewood Greewood Thorn Thorn Reis McIntosh Creek Catawba		
		Pride Mountain (45)	Pride Mountain	Evans Lewis		McKinley Creek		
Lower	Devonian	Devonian (1)	Devonian	Flowers		McKinley Creek		
	Silurian	Wagoner	Wagoner	nonproductive to date				
Lower	Ordovician	Stones River	Stones River	Stones River		Madden		
	Onondaga (2)	Onondaga	Onondaga	"Snow-Craydon" (Snow Zone)		New Hope		
Lower	Cambrian	Knob	Knob	nonproductive to date				
PRECAMBRIAN BASEMENT								

KEY - The first production for a particular producing pool is listed first along with the field in which this production was first established. Additional producing zones are listed in alphabetical order.

Note - The above names of producing units have been used in order to complement production reports published by the Mississippi State Oil & Gas Board. In some cases these published names may not agree with the correlations of the Mississippi Office of Geology.



# MGS MEETING SCHEDULE

When	What/Who	Where
September 8, 2011	Fall BBQ	Jackson Yacht Club-5:30pm
October 13, 2011	<b>Gas Hydrate: A Huge Emerging Energy Resource</b> Art Johnson: Hydrate Energy International	River Hills – 11:30am
November 9, 2011	<b>The Jurassic Norphlet Formation of the Deep Water Eastern Gulf of Mexico: A Revisit of the Sedimentology of Aeolian Systems &amp; Comparisons to both the Modern Namib Desert and Ancient Cedar Mesa Analogues: John B. Wagner*</b>	River Hills – 11:30am
December , 2011	Christmas Party and Dance	Colonial Country Club
January 12, 2012	<b>Oil and Gas Finders Unite!</b> New exploitation techniques in resource plays benefit geologists, engineers, and geophysicists alike	River Hills – 11:30am
February 9, 2012	<b>Geology and the Vicksburg Campaign of the American Civil War</b>	River Hills – 11:30am
March 8, 2012	<b>Sub-aerial Basins Below Sea Level Provide Unexpected Reservoirs</b>	River Hills – 11:30am
April 12, 2012	Boland Scholarship Awards	River Hills – 11:30am
May 10, 2012	Spring Fling	Jackson Yacht Club– 5:30pm

## OFFICERS MEETINGS

August 4, 2011

September 1, 2011

October 6, 2011

November 3, 2011

December 1, 2011

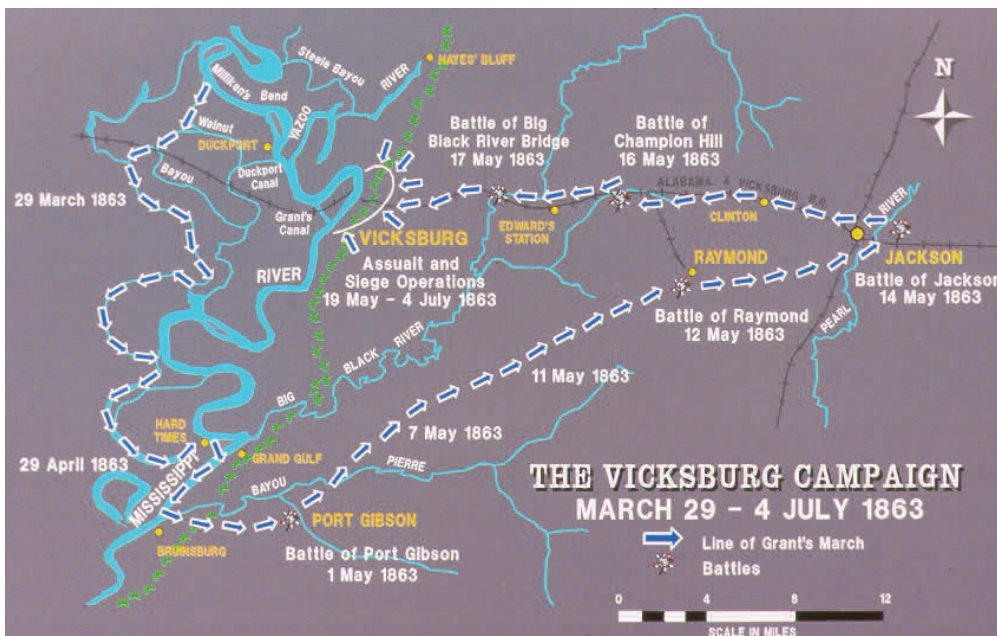
January 5, 2012

February 2, 2012

March 1, 2012

April 5, 2012

May 3, 2012



# **MGS LUNCHEON SPEAKER:**

## **Boland Scholarship Awards**

**Please come and join us to honor 4 Mississippi Students**

# New Cadillac City

## Oil boom on region's horizon

I know. When you hear the words "South Arkansas," it brings a shake of the head and a thought—those poor South Arkansas folks, losing population, jobs flying off to China—a sad part of the state.

In my opinion, and yes, it is an optimistic one, I believe that perception is about to change. I am a professional geologist with over 40 years of experience, and yes, I am convinced that in the next 10 years South Arkansas will be part of a new oil boom that will make the oil boom of the 1920s seem insignificant, and could even dwarf the Northwest Arkansas real estate boom of the past 20 years.

Now, let's look at the rationale behind that exuberant statement.

Unless you have been living under a rock, you know I am speaking of the oil reserves in the Lower Smackover Brown Dense Limestone, a geologic formation below the Upper Smackover. This zone is packed full of hydrocarbons.

Geologists have known for at least 75 years that the formation contains oil, but only in the last 10 years have we figured out a way to produce all that oil. The technology of lateral-horizontal well-drilling and multi-fracs has given us the tools to unlock and produce this oil.

Industry professionals (i.e. Southwest Energy) have estimated that 3 billion barrels of oil reserves are present in the Brown Dense. Just to understand the potential of unlocking these massive oil reserves, multiply \$100—the price of oil—by 3 billion, and you will find there is not enough space on your calculator to get the answer.

The recent completion of Southwest Energy's first well establishes the Brown Dense as having producible oil. In subsequent wells, the 3,900-foot lateral drilled in the first well will almost certainly be lengthened, and the multiple fracs will be analyzed to determine the optimal number and the amount of injected sand required to achieve the highest productivity from the formation. I assume future wells will produce much higher volumes of oil.

### Guest writer

I estimate a minimum of 20 drilling rigs will be operating in the southernmost counties of the state. That alone will add over 500 jobs to the economy, and when you consider the service companies that are critical to drilling and completing these wells, new jobs will likely jump to over 1,000.

As these new wells begin producing, I believe the stream of royalty money and tax receipts will dwarf anything ever seen in our state. I estimate a minimum of 1,200 wells will initially be drilled to partially develop the Smackover Brown Dense. These wells can reasonably be expected to average 300 barrels of oil a day and create gross cash flow of over \$1 billion a month. The amount of money that will flow back to landowners and royalty owners is estimated to be almost \$270 million a month. Of course, revenue from property, severance, payroll and sales taxes will also soar.

But that's *still* just the tip of the money pot for South Arkansas. The real benefits will come from the years of producing and processing this stream of hydrocarbons. It is very likely that when this much oil comes on the market, local refineries will take



Contributed by:  
Dave Cate

Source: Arkansas Democrat-Gazette 4/9/2012

advantage of the supply to expand and create even more jobs.

So let's fast-forward the outlook for South Arkansas. Population losses will be reversed as thousands of new jobs are created, and as the huge cash flows begin to affect the local economies, the resulting new businesses will create additional thousands of new jobs. Tax receipts pouring into the area will enhance the quality of life by supporting many of the items that bring a skilled labor force into communities, creating additional new businesses.

To sum up the expectations for the coming boom is difficult, but one overriding ingredient is there to make it happen. That is the underlying value of the resource. The enormous value of the oil in Smackover Brown Dense Limestone is the key to creating all of the jobs, population growth and quality-of-life issues that are critical. I believe South Arkansas is about to embark on a Brown Dense-derived boom that will be something to behold.

Recently, I had a conversation with an older gentleman from Little Rock, and when I told him I was from El Dorado, he said, "When I was a boy, we called El Dorado 'Cadillac City'." Of course, that name was a carryover from the 1920s oil boom that made El Dorado the wealthiest per-capita town in the state.

Well, they say history repeats itself. I hope it does.



*Richard Mason is president of Gibraltar Energy Co., and a former president of the Arkansas Wildlife Federation. He lives in El Dorado.*

To put the Brown Dense in perspective, we must compare it with other "resource plays." Actually, there are only two other similar-producing areas in North America of equal or greater value: the Eagle Ford Shale in South Texas, and the Bakken Shale in North Dakota. Both areas produce primarily oil from the resource zones. They are two areas in the country that are experiencing an unprecedented economic boom.

It all boils down to what the oil in the Smackover Brown Dense Limestone will mean to South Arkansas. The leasing of nearly a million acres of land across the southern counties of the state has already enriched thousands of land and royalty owners to the tune of an estimated \$300 million, and that is just the tip of the money pot.

Within the next 24 months, I es-

# Shreveport Geological Society



P.O. BOX 750  
SHREVEPORT,  
LOUISIANA 71162

BOARD OF DIRECTORS  
2011-2012

Dan G. Seurlock  
President  
(318) 222-4550

Larry G. Frizzell  
First Vice President  
(318) 746-3616

Morris P. Nichols  
Second Vice President  
(318) 425-0101

Gregory J. Zerrahn  
Secretary  
(318) 222-0517

Joseph A. Lott  
Treasurer  
(318) 212-0470

Jared L. Dysart  
(318) 222-0026

Trac Milam  
(318) 212-0470

R. Alan Schlichtemier  
(318) 222-2400

Maimie E. Witt  
(318) 221-3329

## FLUVIAL STRATIGRAPHY

Monday, May 7, 2012  
8:00 a.m. - 4:30 p.m.

Petroleum Club of Shreveport  
15<sup>th</sup> Floor

**This one day program will offer techniques for improved subsurface mapping and more accurate prediction of lithology and porosity distribution within fluvial reservoirs as depicted in seismic, wellbores, and outcrop data sets.**

**Instructor  
Dr. John M. Holbrook,  
Texas Christian University**

**Dr. Holbrook conducts fundamental research and provides private consulting within the fields of sedimentary geology and stratigraphy. His specialization is sequence stratigraphy and fluvial stratigraphy.**

**Registration fee of \$90.00 includes continental breakfast, lunch, and handouts.**

**Attendance will be limited to the first 75 paid registrations.**

### Registration

Name: \_\_\_\_\_

Address: \_\_\_\_\_

Email/Phone \_\_\_\_\_

Please your completed registration and check made out to the Shreveport Geological Society to Shreveport Geological Society, P.O. Box 750, Shreveport, LA 71162.



# Fluvial Stratigraphy

*Instructor*

**John Holbrook**

*Texas Christian University*

John.[holbrook@TCU.edu](mailto:holbrook@TCU.edu)

(1 or 2 day)

## **Who Should Attend**

Geologists, geophysicists, and engineers seeking techniques for improved subsurface mapping and more accurate prediction of lithology/porosity distribution within fluvial/reservoir intervals that are depicted in seismic, borehole, and outcrop data sets. Concepts are taught from base principles so no prerequisites are required. An entry-level understanding of Geology is helpful.

## **Objectives**

Upon completion of the course, participants will gain an overview of the river processes that generate strata as well as acquire a range of techniques for mapping and interpretation of fluvial rock. Participants will attain the following skills.

Relate surficial fluvial processes to specific rock units.

Evaluate fluvial preservation in a “river-to-rock” context

Quickly recognize fluvial lithofacies in core and outcrop

Identify and constrain dimensions of reservoir (e.g., bars, channel belts, etc) and non-reservoir (e.g. lake, floodbasin, etc.) architectural elements in well-logs, core, seismic, and outcrop

Place reservoir elements into their correct position within the fluvial architectural hierarchy (e.g. channel-fill vs. channel belt vs. valley fill)

Improve reservoir evaluations through a gained understanding of the relationships between locally preserved net to gross and broader basin processes

Estimate heterogeneity and connectivity between and within reservoirs

Correlate fluvial strata at the basin scale

## **Content**

The course will cover the full range of topics needed to identify, correlate, and interpret fluvial reservoirs and encasing non-reservoir units. Participants will gain the foundations for understanding and predicting the geometry, connectivity, and permeability trends of fluvial reservoir systems at the scale of boreholes, fields, and basins. To accomplish this, the course is subdivided into six components that each convey a specific aspect of fluvial stratigraphy and each build sequentially upon knowledge gained from the preceding components. These components are, in order, fluvial geomorphology, fluvial facies, fluvial architecture, seismic geomorphology, heterogeneity and connectivity, and correlation. Fluvial geomorphology provides a background for understanding the flow dynamics, basin processes, and accommodation conditions that dictate formation and preservation of reservoir units. In fluvial facies participants will learn the skills needed to recognize and distinguish the sediments unique to each of the common fluvial depositional environments. Fluvial architecture will provide insights into the origin, geometry, and lithofacies typical for each of the common reservoir (e.g. bars, etc.) and non-reservoir (e.g. abandoned channel fill, etc.) elements within fluvial sections at all levels of the fluvial hierarchy (i.e. channel-scale, vs. belt scale, vs. valley scale). In this section we will also explore controls on spatial arrangement of these elements as well as techniques for their correlation in borehole logs. Seismic geomorphology will address common techniques for identification and mapping of reservoir elements in 3-D seismic data. In the heterogeneity and connectivity section, we will explore the depositional processes that generate heterogeneity within fluvial reservoirs as well as the processes that connect discrete reservoir elements to each other. We will also identify some useful techniques and statistics for predicting heterogeneity and connectivity within fluvial reservoir systems. Lastly, we will review the various techniques that may be used to correlate fluvial strata at the basin scale.

## **Instructor Bio**

Holbrook, John M., Fundamental research and private consulting (petroleum and environmental industries) within the fields of sedimentary geology and stratigraphy. His specialization is sequence stratigraphy and fluvial stratigraphy and he is a Professor at Texas Christian University (2011-Present). Degrees: B.S. University of Kentucky; M.S. University of New Mexico; Ph.D. Indiana University. He worked from 2004-2011 at University of Texas at Arlington, 1992-2004 at Southeast Missouri State University, and has been a guest professor at Enugu State, Nigeria; St Petersburg State, Russia; and University of Texas at Dallas. Professional Affiliations: GSA, SEPM, AAPG, AGU. Service: President GCSSEPM, GSA Council, 2010; Vice-chair Missouri Board of Geologist Registration '02-'04, Chair GSA Sedimentary Geology Division, SEPM Council (Research Counselor), SEPM Annual Meeting Organizing Committee (Funding Coordinator '98 & '99; Oral Technical Chair, '08; Poster Chair, '10). He has worked on numerous funded industry and research stratigraphic projects globally and sat proposal review panels for PRF, NSF, and USGS.

## ***Test your Historical Knowledge of the Mississippi Oil Patch!***

Match the old or original field name with the current/approved name:

- | Original name     | Current name   |
|-------------------|----------------|
| 1. Grubb Springs  | A. Pickens     |
| 2. Pickwick       | B. Carson      |
| 3. Lucas          | C. Hamilton    |
| 4. McLaurin       | D. Orange      |
| 5. Sharpsburg     | E. East Dexter |
| 6. Rose Hill      | F. Ralston     |
| 7. Antioch Church | G. Whitesand   |
8. What field was named for a community that once was known as ‘Grubtoe’?
9. The old design and format of the Mississippi Oil and Gas Board monthly production bulletins was originally found on publications of what volunteer entity?

BONUS QUESTION: After this date, a red stripe and red lettering appeared on Miss. Oil & Gas Board monthly publications; prior to this date the stripe was gray.

### **AND THE ANSWERS ARE.....**

Answers:

- 1 C. Hamilton  
2 E. East Dexter  
3 G. Whitesand  
4 F. Ralston  
5 A. Pickens  
6 D. Orange  
7 B. Carson  
8 Splunge  
9 Miss. Oil & Gas Eng. Committee  
Bonus: June, 1965

## Future Meetings of Selected Earth Science Organizations

EVENT	2011	2012	2013	2014	2015
AAPG Annual Convention & Exhibition (ACE)	10–13 April Houston, TX	22–25 April Long Beach, CA	19–22 May Pittsburgh, PA	6–9 April Houston, TX	31 May–3 June Denver, CO
AAPG International Conference & Exhibition (ICE)	23–26 October Milan, Italy	September Singapore	8–11 September Cartagena, Colombia		
AAPG Prospect & Property Expo-London (APPEX)	1–3 March London, UK	6–8 March London, UK			
AAPG Annual Leadership Conference	12–14 August Boulder, CO				
AAPG Foundation Trustee Associates	7–11 September Lake Tahoe, CA	28 Oct–1 Nov Scottsdale, AZ			
AAPG European Region Conference					
AAPG Eastern Section	25–27 September Washington, D.C.	22–26 September Cleveland, OH			
AAPG Gulf Coast Section (GCAGS)	16–19 October Veracruz, Mexico	21–23 October Austin, TX	Sept–Oct TBD New Orleans, LA	Sept–Oct TBD Lafayette, LA	Sept–Oct TBD Houston, TX
AAPG Mid-Continent Section	1–4 October Oklahoma City, OK				
AAPG Pacific Section	9–11 May Anchorage, AK	22–25 April Long Beach, CA			
AAPG Rocky Mountain Section (RMS)	26–29 June Cheyenne, WY	9–12 September Grand Junction, CO	TBD Salt Lake City, UT	TBD Denver, CO	
AAPG Southwest Section	5–7 June Ruidoso, NM	19–22 May Ft. Worth, TX			
AAPG Polar Petroleum Potential (3P)	30 Aug–2 Sept Halifax, Nova Scotia				
American Association of Petroleum Landmen (AAPL) Annual Meeting	8–11 June Boston, MA				
Arctic Technology Conference (OTC) <i>New!</i>	7–9 February Houston, TX	3–5 December Houston, TX			
Asia Pacific Oil & Gas Conference (SPE)	20–22 September Jakarta, Indonesia	22–24 October Perth, Australia			
Association of Environmental & Engineering Geologists (AEG)	19–24 September Anchorage, AK	TBD Salt Lake City, UT	TBD Seattle, WA		
Canadian Society of Petroleum Geologists (CSPG), Canadian Society of Exploration Geoscientists (CSEG), & Canadian Well Logging Society (CWLS)	9–13 May Calgary, AB, Canada				
European Assoc. of Geoscientists and Engineers (EAGE)	23–26 May Vienna, Austria	4–7 June Copenhagen, Denmark	9–14 June London, UK		
GEO India — South Asian Geosciences Conference & Exhibition	12–14 January New Delhi, India	Not Held			
GEO Middle East Geosciences Conference and Exhibition	Not Held	4–7 March Bahrain	Not Held		
Geological Assoc. of Canada/ Mineralogical Assoc. of Canada Annual Meeting	25–27 May Ottawa, ON, Canada	27–29 May St. John's, NL, Canada	22–24 May Winnipeg, MB, Canada		
Geological Society of America (GSA)	9–12 October Minneapolis, MN	4–7 November Charlotte, NC	27–30 October Denver, CO		
IPTC – International Petroleum Technology Conference (AAPG/EAGE/SEG/SPE)	15–17 November Bangkok, Thailand	5–7 December Beijing, China	2–4 December Doha, Qatar	TBD Kuala Lumpur, Malaysia	
National Association of Black Geologists & Geophysicist (NABGG)	7–10 September San Francisco, CA				
NAPE – North American Prospect Expo (AAPL) – Winter	16–18 February Houston, TX	22–24 February Houston, TX			
NAPE – North American Prospect Expo (AAPL) – Summer	17–19 August Houston, TX				
OTC – Offshore Technology Conference (SPE)	2–5 May Houston, TX	30 April–3 May Houston, TX	6–9 May Houston, TX	5–8 May Houston, TX	
PETEX (PESGB)	Not Held				
Society of Exploration Geophysicists (SEG)	18–23 September San Antonio, TX	4–9 November Las Vegas, NV	22–27 September Houston, TX	26–31 October Denver, CO	
Society of Independent Earth Scientists (SIPES)	20–23 June Jackson Hole, WY				
Society of Petroleum Engineers (SPE)	30 Oct–2 Nov Denver, CO	8–10 October San Antonio, TX	30 Sept–2 Oct New Orleans, LA		
Society of Professional Well Log Analysts (SPWLA)	14–18 May Colorado Springs, CO				

Shaded boxes indicate that all aspects of meeting are managed by the American Association of Petroleum Geologists  
Global Development and Conventions Department  
P.O. Box 979, Tulsa, Oklahoma 74101-0979 USA +1 918 560 2679  
Updated 14 July 2011 / Dates are subject to change

# GEO LINK POST

**USGS TAPESTRY OF TIME AND TERRAIN** <http://tapestry.usgs.gov> The CCGS is donating to all of the 5th and 6th grade schools in the Coastal Bend. Check it out—it is a spectacular map. You might want a framed one for your own office. The one in my office has glass and a metal frame, and it cost \$400 and it does not look as good as the ones we are giving to the schools. Call Owen 510-6224 if you want one for your office for \$150. Duncan, Mike, Chris, Dave, Bob Randy, Seb., Kevin, Ken, Craig, Patrick, Robert.

**FREE TEXAS TOPO'S** <http://www.tnris.state.tx.us/digital.htm> these are TIFF files from your state government that can be downloaded and printed. You can add them to SMT by converting them first in Globalmapper. Other digital data as well.

**FREE NATIONAL TOPO'S** [http://store.usgs.gov/b2c\\_usgs/b2c/start/\(xcm=r3standardpitrex\\_prd\)/.do](http://store.usgs.gov/b2c_usgs/b2c/start/(xcm=r3standardpitrex_prd)/.do) go to this webpage and look on the extreme right side to the box titled TOPO MAPS DOWNLOAD TOPO MAPS FREE.

<http://www.geographynetwork.com/> Go here and try their top 5 map services. My favorite is 'USGS Elevation Date.' Zoom in on your favorite places and see great shaded relief images. One of my favorites is the Great Sand Dunes National Park in south central Colorado. Nice Dunes.

<http://antwrp.gsfc.nasa.gov/apod/astropix.html> Astronomy picture of the day — awesome. I click this page everyday.

<http://www.spacimaging.com/gallery/ioweek/iow.htm> Amazing satellite images. Check out the gallery.

<http://www.ngdc.noaa.gov/seg/topo/globegal.shtml> More great maps to share with kids and students.

[www.geo.org](http://www.geo.org) Don't forget we have our own web page.

<http://micro.magneet.fsu.edu/primer/java/scienceoptiscu/owersof10/>

<http://asterweb.jpl.nasa.gov/galery/default.htm> Great satellite images of volcanoes

<http://terra.nasa.gov/gallery/> More here

[www.ermapper.com](http://www.ermapper.com) They have a great free downloadable viewer for TIFF and other graphic files called ER Viewer.

[www.drillinginfo.com](http://www.drillinginfo.com) This is an incredible (subscription) well and completion data service for independents. Can be demo'ed for free.

<http://terrasrver.com/> Go here to download free aerial photo images that can be plotted under your digital land and well data. Images down to 1 meter resolution, searchable by Lat Long coordinate. Useful for resolving well location questions.

<http://www.fs.fed.us/gpnf/volcanocams/msh/> This is a live cam of Mt. St. Helens refreshed every 5 minutes. At the bottom are old videos of past eruptions in this cycle. It is worth a watch especially now.

## **COLUMN-Coming soon: a Louisiana crude oil glut-Campbell**

By Robert Campbell

NEW YORK, April 4 (Reuters) - Oil refineries in Louisiana are likely to get a taste of the fat profits enjoyed by plants in the North American interior perhaps as soon as this summer when a major Gulf of Mexico pipeline currently used to deliver crude to Texas will stop moving oil westward.

Royal Dutch Shell wants start a \$100 million reversal of its Ho-Ho pipeline system as soon as August, according to an application filed with U.S. regulators.

The project will remove from service a 360,000 barrels per day pipeline that currently transports crude oil from the pipeline hub of Houma, Louisiana to Port Arthur, Texas and onward to Houston.

The result is likely to be a bottleneck that constrains the movement of some offshore oil streams, likely driving down the price of some grades of crude in Louisiana.

Houma is a major landfall point for crude oil produced in the Gulf of Mexico, including the Eugene Island and Poseidon pipeline systems.

It is also a key junction for moving oil west out of the Louisiana Offshore Oil Port, including domestically produced crudes from the Thunder Horse and Mars platforms in the Gulf.

To be sure, there are alternate routes out of Louisiana for crude oil, but as Ho-Ho, according to Shell, "(operates) at or near capacity in its current service," it is almost inevitable that its removal from service will lead to disruptions in the market.

Shell does plan to build a new, larger westbound pipeline system (called Westward Ho) that will start up in 2015 and resume carrying Gulf of Mexico crude to Texas but for the next two years or so Louisiana refiners should enjoy cheaper crude.

### **CUSHING SPREADS SOUTH**

It is not immediately clear what the overall market impact will be of the reversal. Initially, the reversal will cut purchases of imported crude oil by Louisiana refiners. Yet some, if not most, of these barrels will likely be taken up by Texan refiners losing access to Louisiana crude.

But the situation gets more complicated from early 2013. By then the Seaway pipeline from Cushing, Oklahoma to the Houston area will be shipping 400,000 bpd of domestic and Canadian crude.

Other pipelines, including Magellan Midstream Partners' Crane-to-Houston project and a flurry of ventures aimed at moving Eagle Ford crude to Houston should also be in service.

The result will likely be a sharp reduction in foreign crude imports into Houston but also may lead to a localized glut of light sweet crude as most Texas refineries are set up to optimally process heavier grades of oil.

But the Ho-Ho reversal will also feed into the pressure on Gulf Coast crude prices in Louisiana by further upsetting the balance there.

The deepwater barrels that cannot get onto a pipeline heading into Texas will face price pressures on their way to market from the new light barrels on Ho-Ho as well as the expected increase in Gulf of Mexico output.

Of course, nothing here means that the Gulf Coast will experience anything like the massive discounts seen at Cushing in recent years.

The overall impact will be muted by the ongoing need for imported crude oil to fill these refineries and the fact that they are likely to avoid the brunt of the impact of the expected fall in U.S. oil demand by stepping up exports.

Nevertheless the trend should be welcomed by oil markets. Much of the buildup of U.S. and Canadian oil production in recent years has had only the slightest impact on global trade flows due to its confinement to inland markets.

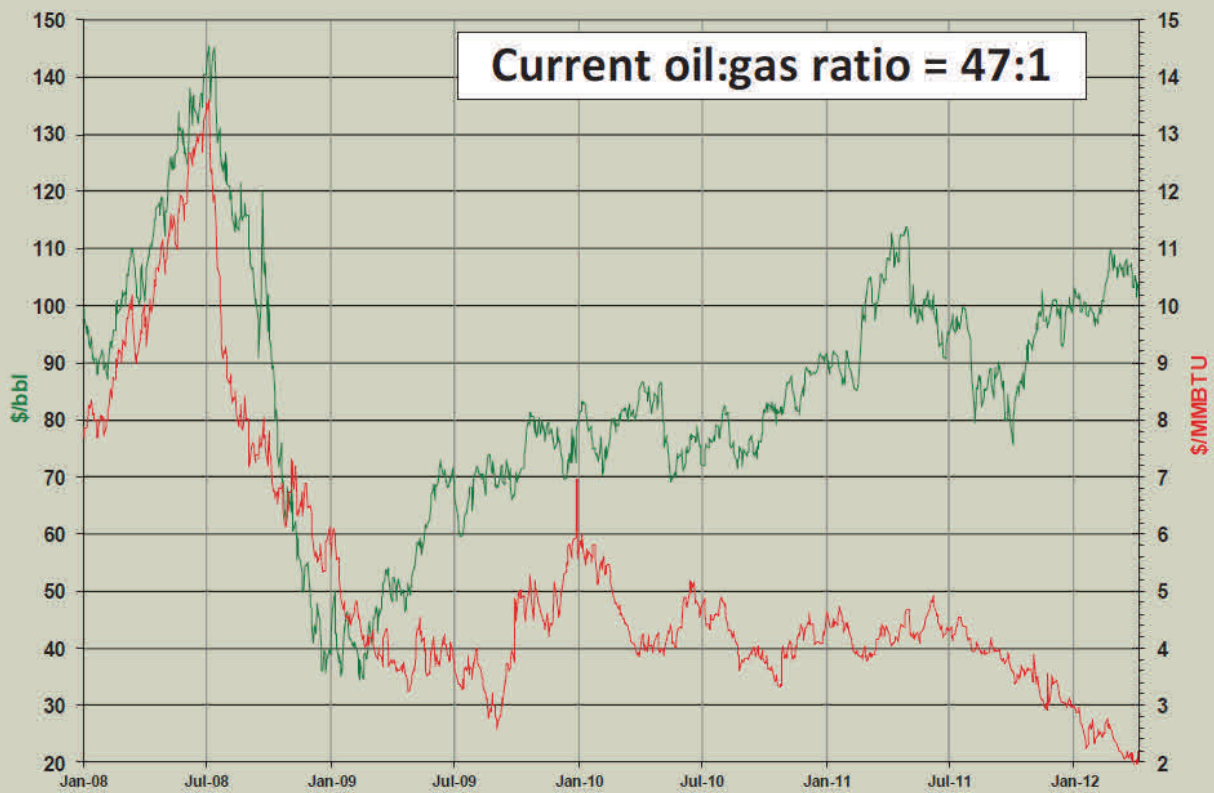
The irruption of the "Cushing problem" on the Gulf Coast will have a more pronounced effect.

#### **Contributed by:**

MGS EDITOR

SOURCE: <http://mobile.reuters.com/article/idUSL2E8F422O20120404?irpc=932>

# NYMEX DAILY SPOT



Current Oil & Gas Prices	OIL	GAS	OIL-12-Mo Strip	GAS-12-Mo Strip
NYMEX Close Friday 4/6/12	\$ 103.83	\$ 2.20	\$ 105.00	\$ 3.47
ICE* current(4/9 @ 8:26 AM)	\$ 101.40	\$ 2.10	<i>*Intercontinental Commodities Exchange</i>	

SOURCE: Oil & Gas Asset Clearinghouse

TURN IT TO THE RIGHT!



**Do you have any articles that you want to share with the MGS membership?**

Something you read online or something you wrote.

Please email them to the MGS Editor at [mgs@treetop.us.com](mailto:mgs@treetop.us.com).

We would like to add more content from the membership.

Attention MGS Members:

**June 2012** will be the last month the MGS Bulletin will be printed and mailed out. From that point on the only version will be in digital .PDF file format.





## MGS BOLAND SCHOLARSHIP FUND

The Society's L. F. Boland Scholarship Fund is open to donations (tax deductible) year round. Your contribution will help the Society recognize and reward outstanding earth science students at its annual Honors Day meeting on April 12th, 2012.

Since inception in 1982, the Society has honored 112 students with the Boland Award. If you would like to contribute, please contact Dave Cate at 601-718-9397 or mail your check (L. F. Boland Scholarship Fund) to him at 217 W. Capitol St., Jackson, MS 39201.

The MGS gratefully acknowledges the following contributors to the L. F. Boland Scholarship Fund for the 2011-2012 year.

Maurice Birdwell  
Maurice Meylan  
Julius Ridgway  
Chris Franks  
Donnie Lambert  
Ken McCarley  
Vaughan Watkins

Kieth Gourges  
Philip Reeves  
Dave Cate  
Joe McDuff  
Jim Michael  
I. Meade Hufford  
Jak Douglas

Tony Stuart  
Terry Bryant  
Stewart & Jane Welch- "In Memory of Fleming Browning, Dee Layman and Jim Furrh"  
Glen Clark

**In Memory of Stewart W. Welch:**  
Ralph Hines , Paul Day  
James Stewart, Pruet Oil Company LLC  
M/M Lindsay Stewart  
Lawrence Favreau Family  
Glenn Clark Family  
John Purry – Greenfield Farms  
Paul Lussier Co.  
Elizabeth Upshaw  
Jeff Katz  
David Garrett – Sadara Project

### MGS Honorary Members

**Esther Applin\***

**Verne Culbertson \***

**David C. Harrell\***

**Dudley J. Hughes**

**Walter P. Jones\***

**Winnie McGlammery\***

**Maurice E. Miesse\***

**Marvin E. Norman\***

**Thurston Connell Rader\***

**Henry Toler\***

**Charles H. Williams**

**Paul Applin\***

**H. Leroy Francis\***

**Oleta R. Harrell\***

**Urban B. Hughes\***

**Harold Karges\***

**Thomas McGlothin\***

**Emil Monsour\***

**Marvin L. Oxley\***

**Baxter Smith\***

**H. Vaughn Watkins**

**Jerry Zoble**

**Lawrence F. Boland\***

**Jim Furrh\***

**Ralph Hines**

**Wendell B. Johnson \***

**Wilbur H. Knight\***

**Frederic F. Mellen\***

**William H. Moore\***

**Richard R. Priddy\***

**Harry V. Spooner**

**Stewart W. Welch**

**Julius Ridgeway**

\* deceased

**MEMBERSHIP APPLICATION / RENEWAL FORM**

**MISSISSIPPI GEOLOGICAL SOCIETY**

**P.O. BOX 422, JACKSON, MISSISSIPPI 39205-0422**

**2011-2012**

Membership year is June through May

New Membership (\$20/yr)\_\_\_\_\_ Renewal (\$20/yr)\_\_\_\_\_ Student (FREE)\_\_\_\_\_ Associate (\$20/yr)\_\_\_\_\_

Boland Scholarship Fund Donation \$ \_\_\_\_\_ Total Amount Enclosed \$ \_\_\_\_\_

Last Name: \_\_\_\_\_ First: \_\_\_\_\_ MI: \_\_\_\_\_

Mailing Address: \_\_\_\_\_

Office Phone: \_\_\_\_\_ Home Phone: \_\_\_\_\_ FAX: \_\_\_\_\_

E-mail Address: \_\_\_\_\_

College/University Attended: \_\_\_\_\_

Degree(s) Obtained and Year(s) Awarded: \_\_\_\_\_

Professional Associations, Certifications, & Licenses: \_\_\_\_\_

# The following are MGS members in good standing

Ken Adams	Lisa Ivshin	Mark Scott
Les Altman	Kevin Jefferys	Thomas Bing Seitz
Bill Bagnall (O)	Ron Jinkins	George Self, Jr.
Larry Baria	Dustin Johnson	C. David Senior
Neil Barnes (O)	Lars Johnson	Brendan Sidereas
Maurice Birdwell	James (Jim) Johnson	Drew Sills
Randy Bissell	Joe Johnson (O)	John Silvernail
Bruce Blake	Fred Katzenmeyer	Kevin Skees
Michael Bograd	Karl Kaufmann	Gary Slade
Chris Bowen	Barbara Kearney	Charles Smith
Terry Bryant	Stanley King (O)	George T. Smith
Alvin Byrd	Donnie Lambert	Jim Sparks
Kyle Carlton	James Landrem	Michal Spooner
Dave Cate	S. Cody Lenert	James Starnes
Matt Caton (O)	James Libiez	Jim Stevens
Glenn Clark	Michael Lieser	Lindsey Stewart
Charles Coney	Joe Lott	Edwin Stricker
Steve Craft	Ken Magee	Tony Stuart
Paul Day	R. P. Major	John Sullivan
Charles Doubek	Ken McCarley	Andy Sylte
Jak Douglas	Joe McDuff	Tom Sylte
Dave Easom	Phillip Meadows	Michael Taylor
Jo Everett	Maurice Meylan	Stan Thieling
Jim Files (O)	James Michael	David Thompson
J. Michael Fincher	David Miller	Sid Thompson
Chris Franks	Dean Miller	Colby Thrash
Stan Galicki	Lew Murray	Wayne Upchurch
Bob Gaston	William (Billy) Mounger, II	Watts Ueltschey
Erin Gilmore	Jack Moody	George Vockroth
Max Gilpin	Pat Moore	Steve Walker
Keith Gourgues	Charlie Morrison	Steve Walkinshaw
Carl Grey	James Nix	Fred Walsh
Paul Gribas	James Norris	Johnnie Wanger
Tom Giosa	Frank Perkins	Mark Wyatt
Jeffrey Hall	Thang Pham	Rob Weyman
David Hancock	Jeanne Phelps	Joe White
Danny Harrelson	Robert Phillips	Bradley Winton
Andrew Head	William Potthoff	Robert Womack, Jr
James Harris	Billy Powell	Stephen Richard Yancey
Franklin Heitmuller	Mike Rasmussen	
Dan Herlihy	Philip Reeves	
Robert Herr	Armondo Ricci	
David Hilton	Bill Ridgway	
Todd Hines	Gail Russell	
Johnny Holifield	Winston Russell	
Bernard Holman	Howard Samsel	
I Meade Hufford	Robert Schneeflock	

(O) - officer

(H) - Honorary

## MGS ADVERTISING ORDER FORM

September 2010 – May 2011

### I. Bulletin Advertisements:

<u>Size</u>	<u>Rate/Year</u>	<u>Amt. Remitted</u>
Full Page Ad (6" x 8")	\$500	\$ _____
1/2 Page Ad (6" x 4")	\$300	\$ _____
1/4 Page Ad (3" x 4")	\$200	\$ _____
Business Card Ad (1 1/2" x 3")	\$100	\$ _____
Professional Listing (1/2" x 3")	\$ 50	\$ _____

### II. Web Page Advertisements (www.missgeo.com):

<u>Type of Web Page Ad</u>	<u>Rate/Year</u>	<u>Amt. Remitted</u>
Front Page Sponsor (Banner Ad – limit of 5)	\$500	\$ _____
Second Page Banner Ad	\$250	\$ _____
Professional Listing/Link	\$100	\$ _____

(Note: Please contact Steve Walkinshaw at (601) 607-3227 or mail@visionexploration.com for details concerning placing your ad on the MGS web site.)

**Total Remitted** \$ \_\_\_\_\_

Please make checks payable to the Mississippi Geological Society. If you have any questions, contact Matt Caton at (601) 898-7444 or mcaton@tellusoperating.com

**SEI**®

**SEISMIC EXCHANGE, INC.**

201 St. Charles Ave., Suite 4300  
New Orleans, LA 70170-4300  
(504) 581-7153 • Fax (504) 581-9591

**HOWARD PATTON**

**PRUET OIL COMPANY, LLC**

**OIL & GAS EXPLORATION**

**217 WEST CAPITOL STREET  
JACKSON, MS 39201**

**OFFICE: (601) 948-5279    Fax: (601) 944-1281**

**W. LESTER AULTMAN**

125 South Congress St., Suite 1212, Jackson, MS 39201  
Office (601) 353-2738    Res. (601) 924-4830

**VANTAGE OIL COMPANY**

1710 Tank Road    (601) 878-0593  
Terry, MS 39170



**BEAN RESOURCES, INC.**

**THOMAS A. GIOSA**  
Geologist

P. O. Box 52768 (70505)  
1000 E. St. Mary Blvd.  
Lafayette, La. 70503

Off. (337) 234-2326  
Fax (337) 234-2330  
Cell (337) 288-4089

**BRUNINI**

**WATTS C. UELTSCHY**

OFFICE (601) 960-6871 | FAX (601) 960-6902

E-MAIL [WATTS@BRUNINI.COM](mailto:WATTS@BRUNINI.COM) | [WWW.BRUNINI.COM](http://WWW.BRUNINI.COM)

BRUNINI, GRANTHAM, GROWER & HEWES, PLLC  
ATTORNEYS AT LAW

190 EAST CAPITOL STREET SUITE 100 JACKSON, MS 39201  
MAILING ADDRESS: P.O. DRAWER 119 JACKSON, MS 39205



**Day Dreams Resources, LLC**

**Jerry P. Ogden**

OIL AND GAS EXPLORATION AND PRODUCTION  
CONSULTING PETROLEUM ENGINEER

Jerry P. Ogden, Pet. Eng.  
P. O. Box 101  
Natchez, MS 39121  
email: [ogdenjerry@bellsouth.net](mailto:ogdenjerry@bellsouth.net)

Office (601) 446-8105  
Fax (601) 446-8844  
Cell (601) 807-1000



EXPLORATION, L.L.C.

401 Edwards Street, Suite 1200  
Shreveport, LA 71101

P.O. Box 1367  
Shreveport, LA 71164

office: (318) 222-8406  
fax: (318) 222-6061  
email: [mei@marlinexploration.com](mailto:mei@marlinexploration.com)

**Jon Q=Petersen**  
President

**S. Cody Lenert**  
Geologist

**Autie T. Orjias**  
V.P./Land Manager

**Ryan Q=Petersen**  
Land

**Dean Giles**  
Secretary/Treasurer

**Rhonda White**  
Admin. Assistant

**Joe R. White, Jr.**  
Chief Geologist



**Jason Stockstill**  
Marketing Representative

**DAWSON GEOPHYSICAL COMPANY**

508 West Wall, Suite 800  
Midland, Texas 79701-5010  
Telephone 432/684-3000  
Fax 432/684-3030  
Cell 432/967-4099

e-mail: [stockstill@dawson3d.com](mailto:stockstill@dawson3d.com)



# ENERGY DRILLING COMPANY<sup>®</sup>

CONTRACT DRILLING 3000 – 15,000 FEET  
MS-AL-FL-ARK-LA-TEX

Pat Burns, Jr.

Jody Helbling

Nestor Navarro

601-446-5259

(Fax)601-446-8607

P. O. Box 905

413 Liberty Rd.

Natchez, MS 39121



OPERATING GROUP, LLC

## **OPERATING GROUP, LLC**

**602 Crescent Place, Suite 100**

**Ridgeland, MS 39157**

**601-898-7444 Voice**

**601-898-7446 Fax**

**BRIAN SIMS**

**EXPLOITATION GEOLOGIC MANAGER**

Email: [bsims@tellusoperating.com](mailto:bsims@tellusoperating.com)

# OWLCO

Oil Well Logging Company  
P. O. Box 1692  
Madison, MS 39130  
(601) 477-8315



**MOCO Inc.**  
The Mississippi Oil Company

MICHAEL L. BLACKWELL  
H. DON NOBLITT

603 Northpark Drive • Ridgeland, MS 39157  
(601) 957-3550



**Karl J. Kaufmann**  
President

Suite B  
546 Keyway Drive  
Jackson, MS 39232

601-936-3601  
Fax 601-936-3646  
coukauf@aol.com

**BLAIR & BONDURANT, P.A.**  
ATTORNEYS AT LAW

WILLIAM F. BLAIR

P.O. Box 321423      1368 Old Fannin Road  
Jackson, MS 39232      Suite 300  
Telephone: (601) 992-4477      Brandon, MS 39047  
Telecopier: (601) 992-9189      Email:



**TROPHY  
PETROLEUM  
CORPORATION**

100 N. Van Buren Street  
Post Office Box 415  
Carthage, MS 39051  
(601) 298-0200 (601) 298-0201 Fax

E. Wayne Upchurch  
President

**ARK-LA-TEX  
LOG LIBRARY, INC.**

400 TRAVIS - SUITE 500  
SHREVEPORT, LOUISIANA 71101-3113

Marie Pace  
MANAGER

PHONE (318) 227-1641  
FAX (318) 227-1642

## BRUXOIL, INC.

DAVID K. BROOKS - PRESIDENT  
RAYMOND A. HELFRICH - VICE PRESIDENT  
DOROTHY M. JAUBERT

P. O. Box 16929  
Jackson, MS 39236  
(601) 981-5722  
FAX: (601) 366-9490



**GOX** John G. Cox  
Petroleum Geologist

**John G. Cox**  
Geologist

601.978.1763  
603 Northpark Drive, Suite 300      fax 601.952.0425  
Ridgeland, Mississippi 39157      john\_cox@bellsouth.net

**MOON & HINES**  
OIL & GAS EXPLORATION

**MOON-HINES-TIGRETT OPERATING CO., INC.**  
PROPERTY MANAGEMENT

P O BOX 3216  
RIDGELAND, MS 39158

OFFICE (601) 572-8300      FAX (601) 572-8310



**ROUNDTREE & ASSOCIATES, INC.**  
OIL AND GAS PRODUCTION  
210 Trace Colony Park Drive,  
Ridgeland, MS 39157  
Phone (601) 355-4530

**Boone**  **Exploration, Inc.**

Lynn D. Boone  
President

J.C. Carlisle  
Vice President

21 Wire Road  
P.O. Box 8660  
Huntsville, TX 77340

Phone: 936-295-4066  
Fax: 936-295-4042  
Email: jcc9551@aol.com



**KELTON OPERATING COMPANY, INC.**  
since 1953

605 SUN TRUST TOWER  
220 W. GARDEN STREET  
PENSACOLA, FL 32501  
P.O. BOX 230  
PENSACOLA, FL 32591

TELEPHONE  
(850) 434-6830  
FACSIMILE  
(850) 434-6842

**I. Meade Hufford, CPL**  
Owner-President

**Energy Land Services**  
Oil & Gas Exploration

99 N. Post Oak Lane  
Suite 6101  
Houston, TX 77024  
Phone: 713-888-0012  
Cell: 713-705-7235  
E-mail: [hufford1913@aol.com](mailto:hufford1913@aol.com)  
VA Phone: 804-438-5852

**JULIUS M. RIDGWAY**

COASTAL EXPLORATION, INC.

1437 OLD SQUARE ROAD, #104  
JACKSON, MISSISSIPPI 39211

601-362-0502  
FAX: 601-362-5397

**SPOONER PETROLEUM COMPANY**

210 East Capitol St., Suite 956  
Jackson, Mississippi 39201

**Oil & Gas Production & Exploration  
Contract Operations**

601-969-1831

**JAMES B. FURRH, Jr., Inc.**

*Oil & Gas Exploration*

4450 Old Canton Road, Suite 205,  
Jackson, MS 39211  
Phone (601) 982-9393 Fax (601) 982-9785

**E. GEOFFREY JEFFREYS**

*Petroleum Consultant*

**OIL, GAS AND MINERAL APPRAISALS**

115 Fairway Drive  
Daphne, AL 36526  
[egjeffreys@aol.com](mailto:egjeffreys@aol.com)

Off (251) 621-1850  
Fx (251) 621-1630  
Cell (251) 709-7919

**Bryant Miller**

1837 Peachtree Street  
Jackson, MS 39202

[bryantgmiller@bryantgmiller.com](mailto:bryantgmiller@bryantgmiller.com)

**ENERGEN**  
RESOURCES

**President & COO**  
**John Richardson**

**Senior Vice President**  
**Operations**  
**Paul Sparks**

**General Manager**  
**Acquisitions & Engineering**  
**Gene Cash**

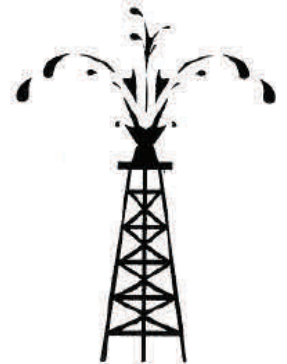
**General Manager**  
**Geology**  
**Ron Tisdale**

**General Manager**  
**Land**  
**Paul Rote**  
**(205)326-2721**

**Joseph H. McDuff**  
Geologist

351 Chapel Loop  
Mandeville, LA 70471  
985.845.9430

[jhmcduff@charter.net](mailto:jhmcduff@charter.net)



**Diversified Land  
Management, Inc.**

**PERMIT ACQUISITION  
SPECIALISTS**

**Jack Tate**

President

P.O. Box 363  
Ridgeland, MS 39158

505 Loire  
Suite H  
Lafayette, LA 70507

Office: 337.886.0060

Fax: 337.886.0064

Cell: 601.259.1366

email: [geoagent46@aol.com](mailto:geoagent46@aol.com)

[dminconline.com](http://dminconline.com)

"A company committed to excellence and achieving success while providing professional permitting acq. & project mgmt. with the client's interests & concerns top priority"



# Get More



# from your Core

With reservoirs becoming increasingly complex, you need the most accurate information you can get to better understand your reservoir.

Weatherford Labs helps you get more from your core by combining an unsurpassed global team of geoscientists, engineers, technicians and researchers with the industry's most comprehensive, integrated laboratory services worldwide. From core analysis, sorption, geochemistry and isotopic composition to detailed basin modeling and comprehensive data packages, we provide you with real reservoir rock and fluid information that hasn't been distilled by a simulator or iterated by software.

We call it "The Ground Truth"™ – giving you the accurate answers you need for better reservoir understanding. You'll call it a better return on your reservoir investment. To learn more, contact [TheGroundTruth@weatherfordlabs.com](mailto:TheGroundTruth@weatherfordlabs.com).



**Weatherford**  
LABORATORIES

[weatherfordlabs.com](http://weatherfordlabs.com)

© 2011 Weatherford. All rights reserved. Trade names proprietary and patents Weatherford's technology.

**Denbury**

5320 Legacy Drive  
Plano, TX 75024

**Denbury Resources, Inc.**

*Denbury Resources, Inc. is a growing independent oil and gas company. The Company is the largest oil and natural gas operator in Mississippi and Montana, owns the largest reserves of CO<sub>2</sub> used for tertiary oil recovery east of the Mississippi River, and holds significant operating acreage in the Rockies, Permian Basin, Mid-Continent and Gulf Coast. The Company's goal is to increase the value of acquired properties through a combination of exploration, drilling and proven engineering extraction practices, with its most significant emphasis relating to tertiary recovery operations.*

NYSE: DNR  
[www.denbury.com](http://www.denbury.com)

Denbury Resources Inc.

**BRANCHING  
OUT**

# MISSISSIPPI GEOLOGICAL SOCIETY

## PAST PRESIDENTS

1939-1940	Henry N. Toler	1973-1974	Larry Walter
1940-1941	Urban B. Hughes	1974-1975	W. E. "Gene" Taylor
1941-1942	J. Tom McGlothlin	1975-1976	Jerry E. Zoble
1942-1943	Dave C. Harrell	1976-1977	P. David Cate
1943-1944	K. K. "Bob" Spooner	1977-1978	Sarah Childress
1944-1945	L. R. McFarland	1978-1979	Les Aultman
1945-1946	J. B. Story	1979-1980	Philip R. Reeves
1946-1947	Frederic F. Mellen	1980-1981	Marshall Kern
1947-1948	H. Lee Spyrès	1981-1982	Stephen Oivanki
	Robert D. Sprague	1982- 1983	James W. "Buddy" Twiner
1948-1949	Robert D. Sprague	1983- 1984	Charles H. Williams
1949-1950	E. T. "'Mike" Monsour	1984- 1985	C. Kip Ferns
1950-1951	J. Tate Clark	1985-1986	Steven S. Walkinshaw
	Charles E. Buck	1986-1987	J. R. "'Bob" White
1951-1952	George W. Field	1987-1988	Harry Spooner
1952-1953	James L. Md11in, Jr.	1988-1989	Stanley King
1953-1954	Wilbur H. Knight	1989-1990	Stan Galicki
1954-1955	A. Ed Blanton	1990-1991	E. James Files, Jr.
1955-1956	Gilbert A. Talley	1991-1992	Stephen L. Ingram, Sr.
1956-1957	Ben Ploch	1992-1993	Michael Noone/Stanley King
1957-1958	Emil Monsour	1993-1994	Brian Sims
1958-1959	Charles Brown	1994-1995	C. W. "Neil" Barnes
1959-1960	M. F. Kirby	1995-1996	Lester Aultman
1960-1961	Rudy Ewing	1996-1997	Jack S. Moody
1961-1962	Xavier M. Franscogna	1997-1998	George B. Vockroth
1962-1963	Robert B. Ross	1998-1999	Rick L. Ericksen
1963-1964	William A. Skees	1999-2000	Stanley King
	Marvin Oxley	2000-2001	John C. Marble
1964-1965	James F. Bollman	2001-2002	Andrew T. Sylte
1965-1966	Sankey L. Blanton	2002-2003	Aaron Lasker
1966-1967	Alan Jackson	2003-2004	John G. Cox
1967-1968	Julius M. Ridgway	2004-2005	James E. Starnes
1968-1969	Edward D. Minihan	2005-2006	Todd Hines
1969-1970	Kevin E. Cahill	2006-2007	Bob Schneeflock
1970-1971	John Lancaster	2007-2008	Tony Stuart
1971-1972	Larry Boland	2008-2009	Lisa Ivshin
1972-1973	Charles Barton	2009-2010	Joe Johnson
		2010-2011	Brian Sims