



Volume 60

No. 6

February 2012

MISSISSIPPI GEOLOGICAL SOCIETY *eBulletin*



missgeo.com

MGS 2010-2011 BOARD OF DIRECTORS



Officers

President	Stanley King	Independent	rox52doc@aol.com	(601) 842-3539
1st Vice President	Jim Files	Geodigital Consulting	jfgd@comcast	(601) 853-0701
2nd Vice President	Neil Barnes	Tellus Operating	nbarnes@tellusoperating.com	(601) 898-7444
Secretary	Matt Caton	Tellus Operating	mcaton@tellusoperating.com	(601) 898-7444
Treasurer	Bill Bagnall	Bureau of Land Management	william_bagnall@blm.gov	(601)-977-5417
Webmaster	Steve Walkinshaw	Vision Exploration	steve@visionexploration.com	(601) 607-3227
Advertising	Matt Caton	Tellus Operating	mcaton@tellusoperating.com	(601) 898-7444
Editor	Joe Johnson	Tellus Operating	mgs@treetop.us.com	(601) 898-7444

Boland Scholarship

President	Jim Files	Geodigital Consulting		(601) 853-0701
Secretary	Dave Cate	Pruet Oil		(601) 948-5279
Members	Ray Lewand Tony Stuart James Starnes Bob Schneeflock	Venture Oil & Gas DEQ Geodigital Consulting		(601) 428-7725 (601) 853-0701

Honorary Membership

Chairman	Charles H. Williams, Jr.	Vaughey & Vaughey		(601) 982-1212
Members	Dudley J. Hughes E. Ralph Hines Jerry Zoble	Hughes South Corp. Moon-Hines Independent		(601) 420-9892 (601) 572-8300

MGS Representatives

AAPG	Maurice Birdwell	Independent		(601) 936-6939
GCAGS	Danny Harrelson	U.S. Army Engineers R&D Center		(601) 634-2685

Other

Environmental Section	Ken Ruckstuhl	Environmental Mgt. Serv.		(601) 992-8233
Historian	Stanley King	Independent		(601) 842-3539

PRESIDENT'S LETTER

Stanley King

January, usually the longest, dreariest month, is behind us now. I always feel like if I make it through January I'm in good shape since February is a short month and then comes March and Spring....but that's just me. Something about Spring and hope springing eternal...but then again, that's just me.

This month for our luncheon speaker we will be treated to what should be an interesting talk by one of our own, Danny Harrelson. He will be speaking on the geology of the Vicksburg area and its effect on the battles and siege of Vicksburg. With the sesquicentennial of the Civil War now under way, this certainly is a timely talk, and one of interest to students of the War of Northern Aggression. And of interest, as well, if you've ever led/chased a group of Cub Scouts as they ran the entire length of the loop in the Vicksburg Park, up and down the 'hills and hollers'. Please make your plans to attend Thursday, February 9th, at 11:30 at River Hills.

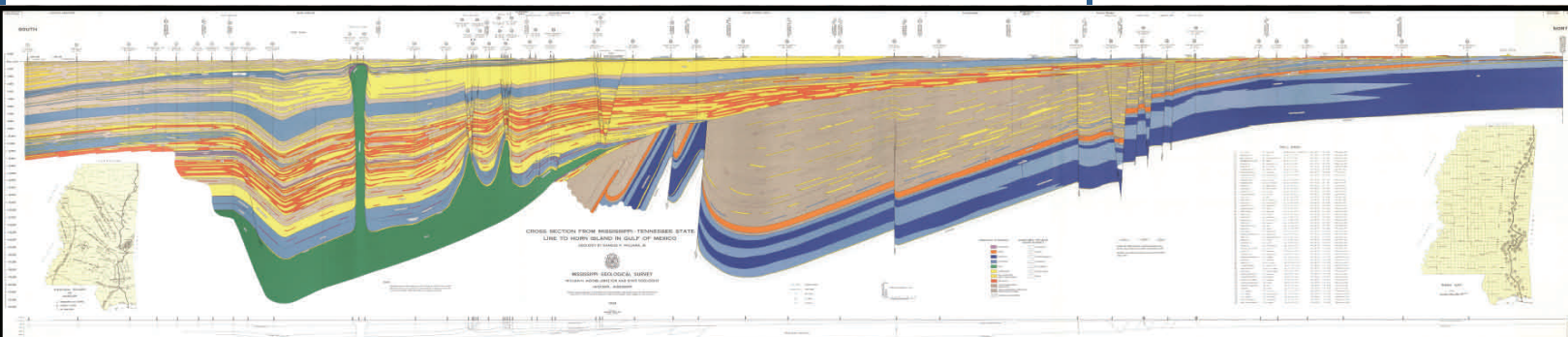
We are still in the process of updating our publications via scanning and review of older publications. The 1969 Wilcox book has been scanned and others are under way. Your assistance will be welcomed if you wish to volunteer to help accomplish this first review and re-formatting.

Elsewhere in this bulletin you will find, as usual, the calendar for your Society's activities. Please review it and mark your own calendar and plan to attend these events.

Stanley King



MGS



MGS MEETING SCHEDULE

When	What/Who	Where
September 8, 2011	Fall BBQ	Jackson Yacht Club-5:30pm
October 13, 2011	Gas Hydrate: A Huge Emerging Energy Resource Art Johnson: Hydrate Energy International	River Hills – 11:30am
November 9, 2011	The Jurassic Norphlet Formation of the Deep Water Eastern Gulf of Mexico: A Revisit of the Sedimentology of Aeolian Systems & Comparisons to both the Modern Namib Desert and Ancient Cedar Mesa Analogues: John B. Wagner*	River Hills – 11:30am
December , 2011	Christmas Party and Dance	Colonial Country Club
January 12, 2012	Oil and Gas Finders Unite! New exploitation techniques in resource plays benefit geologists, engineers, and geophysicists alike	River Hills – 11:30am
February 9, 2012	Geology and the Vicksburg Campaign of the American Civil War	River Hills – 11:30am
March 8, 2012	TBD	River Hills – 11:30am
April 12, 2012	Boland Scholarship Awards	River Hills – 11:30am
May 10, 2012	Spring Fling	Jackson Yacht Club– 5:30pm

OFFICERS MEETINGS

August 4, 2011

September 1, 2011

October 6, 2011

November 3, 2011

December 1, 2011

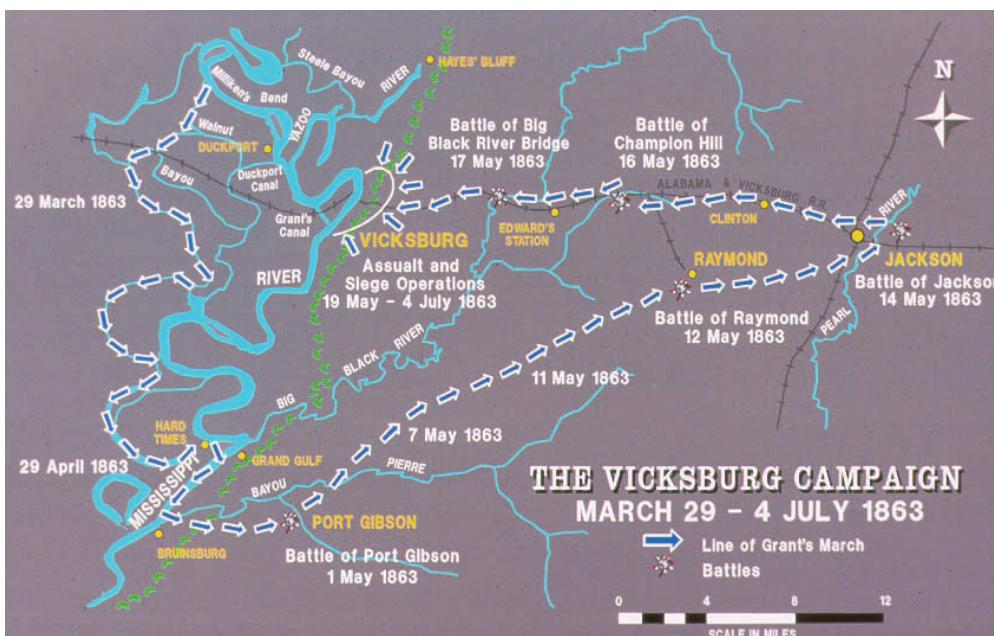
January 5, 2012

February 2, 2012

March 1, 2012

April 5, 2012

May 3, 2012



MGS LUNCHEON SPEAKER:

Geology and the Vicksburg Campaign of the American Civil War

Danny W. Harrelson and Maureen K. Corcoran, Research Geologists, U.S. Army Engineer Research and Development Center, 3909 Halls Ferry Road, Vicksburg, Ms. 39180, email, Danny.W.Harrelson@erc.usace.army.mil, Phone: 601-634-2685, fax: 601-634-3153.

The Vicksburg Campaign of 29 March - 4 July 1863 was decided by geology. Geologic factors influencing the campaign included the unique properties of Loess deposits (i.e. its ability to be worked into stable vertical cuts), a Yazoo-type stream (i.e. the Yazoo River) and the meandering stream morphology of the Mississippi River. The Loess deposits influenced the battles at the tactical level by allowing the construction of formidable defensive positions. The naturally high relief created by the Loess bluffs was the single most important factor in the establishment of the Gibraltar of the Confederacy. The Yazoo-type stream, north of the city was a natural defensive barrier that dramatically hindered troop and ship movement. The sinking of the USS Cairo, 12 December of 1862 proved a significant example. Grant and Butler's canals (Figure 1) were efforts to use the meandering nature of the Mississippi River to circumvent Vicksburg's defenses.

These ingenious attempts would have succeeded had basic geologic principles been applied. In summary the fortifications and defensive positions constructed within the Loess deposits precluded any success of frontal assaults while the morphology of a

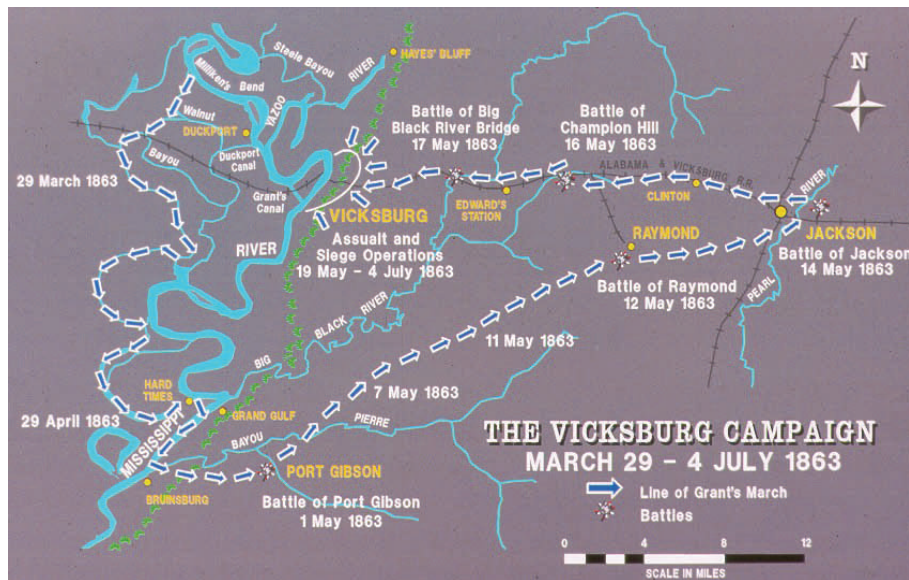
Yazoo-type stream and the meanders of the Mississippi River provided defense of both

flanks. Correct analysis of these unique geologic conditions by the Union field commanders lead them to utilize tactics (i.e. a flanking maneuver and the 46 day siege of Vicksburg) that neutralized these inherent strengths and thereby lead to a successful campaign ending with the surrender of Vicksburg on 4 July, 1863.

G. Zeman, 2001, The Campaign for Vicksburg - 1863, <http://www.nps.gov/vick/vcmpgn/vcmpgn.htm>

BIO:

Danny W. Harrelson received his B.S. 1976 and M.S. 1981 degrees in geology from the University of Southern Mississippi, Hattiesburg, Ms. He has a total of 35 years experience working for state and federal government, private industry (oil and mineral exploration) and consulting firms (oil service, geotechnical and environmental). Mr. Harrelson has authored or co-authored more than 100 papers and abstracts on a variety of geologic subjects, published in numerous professional journals. Currently, he is employed as a research geologist for the U. S. Army Engineer Research Development Center, Geotechnical and Structures Laboratory, Vicksburg, Mississippi.



Tuscaloosa shale promising

St. Helena well's initial production spurs interest

BY TED GRIGGS

Advocate business writer

February 07, 2012

It's still early in the Tuscaloosa Marine Shale's development, but energy industry members say a St. Helena Parish well's initial production, nearly 800 barrels a day, is encouraging.

The Encana Weyerhauser well, completed in November, averaged 784 barrels of oil per day and 309,000 cubic feet of natural gas, according to Encana's filing with the state Department of Natural Resources.

"This is certainly a key well. There's no doubt," said Dan Collins, a Baton Rouge landman who spent much of last year negotiating lease agreements with landowners in the shale.

"You know, 800 of anything coming out of the ground daily is a lot," Collins said.

That's especially true when the anything in question fetches nearly \$100 a barrel.

Around two dozen wells have been drilled or are being drilled in the Tuscaloosa Marine Shale, an oil-rich formation that covers Louisiana's midsection. Energy companies have leased more than 1 million acres in the formation, but so far the firms aren't sharing much of their early production figures.

Kirk A. Barrell, president of Amelia Resources, of Texas, said before the formation can be considered economically viable, 10 to 20 wells will have to be completed.

"You need the initial (production) rates for 10 to 20 wells, but you also need to get 12 to 15 months out and see what the decline of that rate is," Barrell said.

Still, Collins said it appears the energy companies believe they have something.

Oil companies have proposed a number of wells and discussed putting multiple drilling pads on landowners' property, Collins said. The shale's future remains to be seen, but there probably wouldn't be so much activity if the energy companies didn't believe their investment is worthwhile.

Encana has leased around 270,000 acres in the play, has completed one horizontal well, and has two new wells under way, according to its investor presentations.

Encana spokesman Alan Boras said he could not discuss any details of the company's Tuscaloosa wells.

But the company will release more information during its fourth-quarter earnings report, scheduled for Feb. 17, Boras said.

A lot of people think every well in the Tuscaloosa should produce 1,000 barrels a day, but it takes time for drilling companies to figure out the best approach, Barrell said.

Barrell, the author of a blog on the Tuscaloosa Trend, said people forget or don't realize that the early results varied from wells drilled in the Eagle Ford Shale in Texas.

While there were a few good wells whose maximum production was around 1,000 barrels per day, there were a number of wells whose daily production never reached double figures, Barrell said.

Collins said in order to recover the millions in drilling costs, a well's initial production has to be pretty strong because the production curve declines pretty rapidly.

Shale wells' production rates generally fall about 75 percent after 12 months.

"I liken it to a ski slope. We certainly don't want the black ski slope. We want one of those greens or blues that's going to ... gently drop over time," Collins said.

Gifford Briggs, vice president of the Louisiana Oil and Gas Association, said the Encana well's results will encourage additional testing.

But it's difficult to say how significant the well is without knowing the costs and how long the well will continue producing at the same rate, Briggs said.

In this early phase, Encana and other companies operating in the Tuscaloosa are still trying to answer a number of questions, such as what is the right depth to drill and how to get the most effective fracture, he said.

Wells in the Tuscaloosa are drilled vertically for around 11,000 feet and then horizontally. Drillers then fracture the formation in multiple stages, forcing millions of gallons of water, mixed with sand and/or ceramic and chemicals into the formation to crack the shale. The sand and ceramic materials prop the cracks open, releasing the oil.

Fracking has drawn criticism from environmentalists and some landowners, who say the practice pollutes the air, contaminates water and consumes too much water. The oil and gas industry's position is that fracking has been used for more than 50 years on thousands of wells with no evidence of groundwater pollution.

Collins said leasing activity in the area has slowed this year as companies have turned to drilling, but Barrell said his firm and its partners are still actively leasing.

Lease prices in the Tuscaloosa Marine Shale, compared to other shale plays, remains a "great, great value," Barrell said.

Last year, leases were going for around \$150 an acre.

Briggs said he has heard that leases are fetching \$250 to \$500 per acre.

Contributed by:

MGS Editor

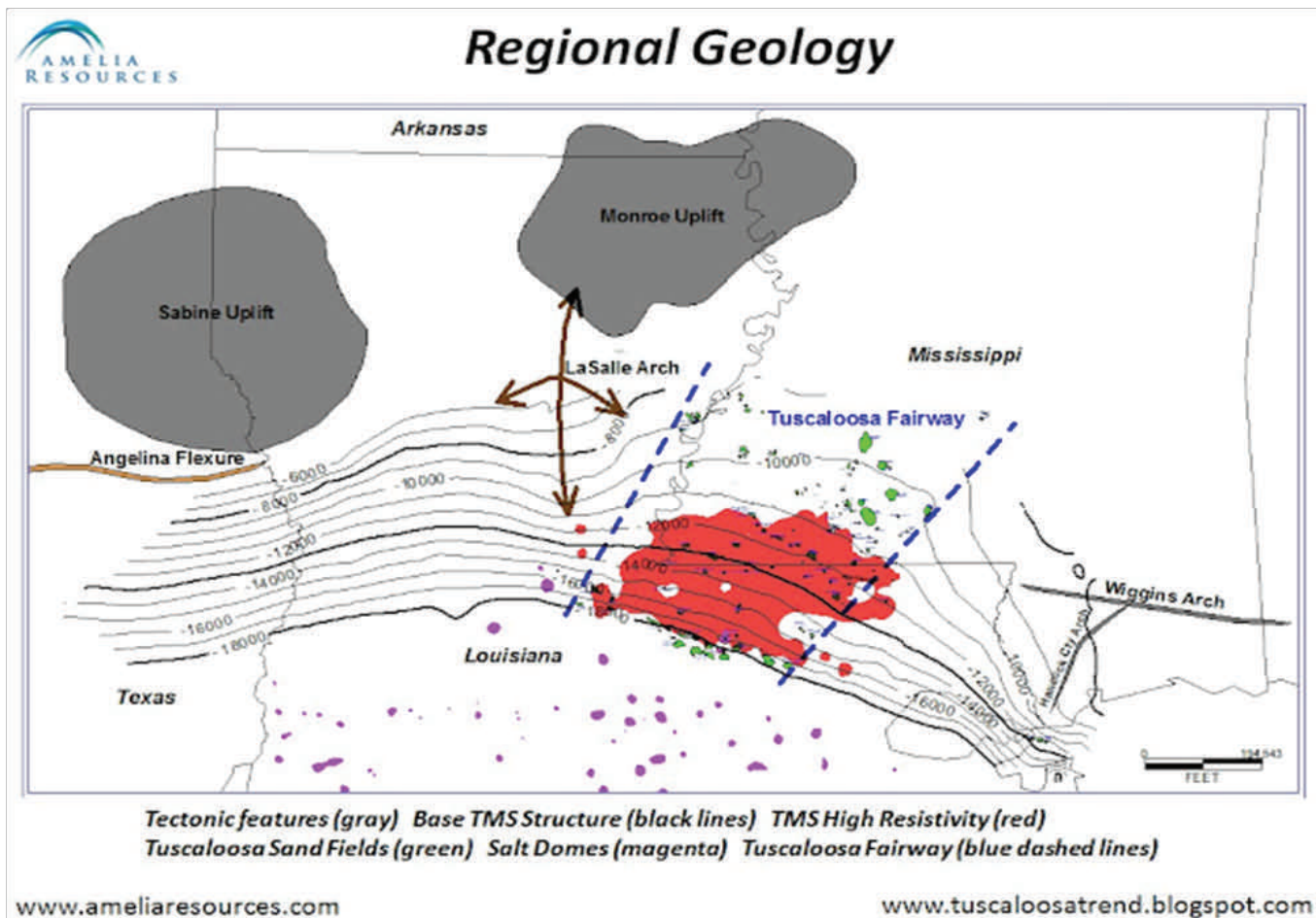
Source: <http://theadvocate.com/home/1966597-125/tuscaloosa-shale-promising.html>

Tuscaloosa Regional Geology:

Regional tectonic features played a significant role during the deposition of the Tuscaloosa Formation. The LaSalle Arch and the Wiggins/Hancock County Arches serve as “tectonic bookends” for the Tuscaloosa Fairway. These large tectonic features exerted control over the orientation and subsequent deposition of the ancestral Mississippi River. A regional 2D seismic grid and well logs indicate that the ancestral Mississippi River was very prominent along this fairway as far back as Upper Jurassic (Cotton Valley) time.

The base of the Tuscaloosa Marine Shale (TMS) structure illustrates the structural nosing caused by these features and exhibits a variance in dip across Louisiana. The large volume of Tuscaloosa sand deposition and subsequent loading resulted in a gently dipping structure within the Tuscaloosa Fairway. Prolific Tuscaloosa sand production (green) occurs along this fairway (blue dashed lines). To the west where Tuscaloosa sand deposition did not occur, much steeper structural dips resulted. The impact of the Sabine Uplift is evidenced by the south-western trend of the structure contours. The cluster of diapiric salt domes down dip of the Tuscaloosa Fairway indicates massive sedimentary loading and a consistent axis of deposition during later geologic time. The modern day Mississippi River still flows through this fairway today. McMoRan currently explores for the Tuscaloosa sands down dip of this fairway in the Gulf of Mexico.

Repetitive, extensive depositional loading events occurred through time and resulted in basinal subsidence, which ultimately led to a unique burial history along the Tuscaloosa Fairway. Thick accumulations of higher resistivities in the TMS align with the Tuscaloosa Fairway. The Tuscaloosa sands and the TMS appear to be part of the same hydrocarbon system. The hydrocarbon source for the Tuscaloosa sands has been determined to be from a combination of Lower Cretaceous, Tuscaloosa shales, and the TMS. The regional structure might provide some insight into the burial history of the TMS. The higher resistivities along the Tuscaloosa Fairway provide evidence for a substantial “hydrocarbon kitchen.” The Tuscaloosa Fairway being positioned in between two significant tectonic features will have likely experienced a different burial history and subsequent thermal maturity than the regions to the east and west. The region of higher resistivities would provide support for this hypothesis.

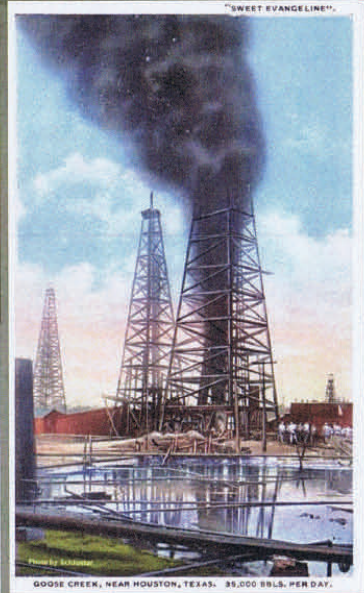




2012 Oil History Symposium

March 8-10
Houston, TX

CALL FOR ABSTRACTS
Oral presentations and posters
Deadline: January 15, 2012
www.petroleumhistory.org
Submit abstracts to:
wbrice@pitt.edu
more information: spencerj320@gmail.com





**AMERICAN ASSOCIATION OF
PROFESSIONAL LANDMEN**

www.landman.org

**FIELD LANDMAN SEMINAR
JACKSON, MS**

Monday February 20, 2012

6:00 p.m. to 9:00 p.m.

FORESTRY BLDG. AUDITORIUM

Miss. Agricultural & Forestry Museum

Program

Happy Hour & Supper
AAPL Update
MAPL Update
2 RL/RPL/CPL CE Credits

Presentations

I.

Kirk Barrell, President - Amelia Resources, Inc.
"Tuscaloosa Marine Shale"

II.

Toby Bean, President - Bean Resources, Inc.
"Salt Dome Gas Storage in Miss.
- Land and Other Issues"

REGISTRATION DEADLINE: Feb. 16, 2012

Sponsored by AAPL & the AAPL Educational Foundation

!! FREE !!
TO ALL ACTIVE AAPL MEMBERS

FIELD LANDMAN SEMINAR

Monday, Feb. 20, 2012 • 6 p.m. to 9:00 p.m.

Mississippi Agriculture and Forestry Museum, 1150 Lakeland Drive, Jackson, MS 39216
FORESTRY BUILDING AUDITORIUM - Parking in Smith-Wills Stadium Lot

The American Association of Professional Landmen and the AAPL Educational Foundation along with MAPL invites you to attend a Field Landman Seminar to be held at the Mississippi Agriculture and Forestry Museum, 1150 Lakeland Drive, Jackson, MS 39216, starting at 6:00 p.m.

The Trustees of the AAPL Educational Foundation initiated these events to provide a forum for field landmen to gather for education, networking, and good food, all at no cost to all AAPL Active Members and \$50.00 to non-members attending. This program is designed for the Field Landman to have the opportunity to register to become a member of the AAPL.

For AAPL non-members, the registration fee of \$50.00 covers the educational classes, happy hour, supper, plus your 2012/2013 membership dues. Please note: You can fill out your application prior to attending this seminar and bring it with you for processing.

The program begins with and includes happy hour & supper, followed by an AAPL Update and two dynamic and informative presentations. Kirk Barrell, President of Amelia Resources, Inc. will give his highly acclaimed "Tuscaloosa Marine Shale" presentation and Toby Bean of Bean Resources, Inc. will give a presentation on "Salt Dome Gas Storage in Mississippi - Land and Other Issues".

MAPL members please note that the monthly membership meeting will be held in conjunction with this seminar.

REGISTRATION

For all AAPL active members there is no charge for this event but you **MUST** pre-register.

Please register online at www.landman.org through the education calendar page or by submitting the completed registration form on the following page.

Space is limited to the first 200 registrants and seats will fill up quickly.

Registration will close on Thursday, Feb. 16, 2012.

CANCELLATIONS

There is no penalty for cancellation. Please contact AAPL should you need to cancel your registration in order to maintain an accurate count.

ACCREDITATION

This seminar has been accredited for two RL/RPL/CPL continuing education credits.

! NON-MEMBERS - FABULOUS DEAL !

NON MEMBERS - YOUR \$50 FEE INCLUDES: HAPPY HOUR w/ DRINKS; SUPPER; SEMINAR;
PLUS FREE MEMBERSHIP IN AAPL (which normally costs \$100!)

ATTEND, JOIN AND LET AAPL BENEFIT YOU

REGISTRATION FORM

(Please type or print legibly)



Field Landman Seminar
420FLS

Jackson, MS
Feb. 20, 2012

AAPL Contact:
Lahoma Long
(817) 847-7700
llong@landman.org

Name: _____ AAPL Member # _____

Company: _____

Address: _____

City, ST ZIP: _____

Phone: _____ Fax: _____

E-mail: _____

Registrations & Payment Received:
Deadline Feb. 16, 2012

REMIT CHECK TO:
AAPL
P.O. Box 225395
Dallas, TX 75222-5395

Field Landman Seminar

AAPL Member \$0
Non AAPL Member \$50

**REMIT CREDIT CARD OR
AAPL MEMBER
REGISTRATION FORM
TO:**
AAPL
4100 Fossil Creek Blvd.
Fort Worth, TX 76137
Fax: (817) 546-6441

Payment Information

Check # _____ MasterCard Visa American Express

OFFICE USE ONLY

RECEIVED:

POSTED:

Credit Card #: _____

Exp. Date: _____ Card Security Code (CSC): _____

Name on Card: _____

Signature: _____

Please list any food allergies below:



FIELD LANDMAN SEMINAR

**FREE to AAPL MEMBERS
\$50 for NON-MEMBERS***

MONDAY, February 20th
6:00 p.m. – 9:00 p.m.
Agriculture and Forestry Museum
1150 Lakeland Drive
Jackson, MS 39216

PROGRAM INCLUDES:
Happy Hour
Buffet Dinner
AAPL Update
2 RL/RPL/CPL CE Credits

This program is designed for field landmen to gain continuing education as well as have the opportunity to register to become members of the AAPL at a significantly reduced rate.

*The \$50.00 registration fee covers happy hour, dinner and the seminar plus your first year of AAPL membership dues.

**REGISTER ONLINE AT WWW.LANDMAN.ORG
DEADLINE TO REGISTER: February 16, 2012**

Future Meetings of Selected Earth Science Organizations

EVENT	2011	2012	2013	2014	2015
AAPG Annual Convention & Exhibition (ACE)	10–13 April Houston, TX	22–25 April Long Beach, CA	19–22 May Pittsburgh, PA	6–9 April Houston, TX	31 May–3 June Denver, CO
AAPG International Conference & Exhibition (ICE)	23–26 October Milan, Italy	September Singapore	8–11 September Cartagena, Colombia		
AAPG Prospect & Property Expo-London (APPEX)	1–3 March London, UK	6–8 March London, UK			
AAPG Annual Leadership Conference	12–14 August Boulder, CO				
AAPG Foundation Trustee Associates	7–11 September Lake Tahoe, CA	28 Oct–1 Nov Scottsdale, AZ			
AAPG European Region Conference					
AAPG Eastern Section	25–27 September Washington, D.C.	22–26 September Cleveland, OH			
AAPG Gulf Coast Section (GCAGS)	16–19 October Veracruz, Mexico	21–23 October Austin, TX	Sept–Oct TBD New Orleans, LA	Sept–Oct TBD Lafayette, LA	Sept–Oct TBD Houston, TX
AAPG Mid-Continent Section	1–4 October Oklahoma City, OK				
AAPG Pacific Section	9–11 May Anchorage, AK	22–25 April Long Beach, CA			
AAPG Rocky Mountain Section (RMS)	26–29 June Cheyenne, WY	9–12 September Grand Junction, CO	TBD Salt Lake City, UT	TBD Denver, CO	
AAPG Southwest Section	5–7 June Ruidoso, NM	19–22 May Ft. Worth, TX			
AAPG Polar Petroleum Potential (3P)	30 Aug–2 Sept Halifax, Nova Scotia				
American Association of Petroleum Landmen (AAPL) Annual Meeting	8–11 June Boston, MA				
Arctic Technology Conference (OTC) <i>New!</i>	7–9 February Houston, TX	3–5 December Houston, TX			
Asia Pacific Oil & Gas Conference (SPE)	20–22 September Jakarta, Indonesia	22–24 October Perth, Australia			
Association of Environmental & Engineering Geologists (AEG)	19–24 September Anchorage, AK	TBD Salt Lake City, UT	TBD Seattle, WA		
Canadian Society of Petroleum Geologists (CSPG), Canadian Society of Exploration Geoscientists (CSEG), & Canadian Well Logging Society (CWLS)	9–13 May Calgary, AB, Canada				
European Assoc. of Geoscientists and Engineers (EAGE)	23–26 May Vienna, Austria	4–7 June Copenhagen, Denmark	9–14 June London, UK		
GEO India — South Asian Geosciences Conference & Exhibition	12–14 January New Delhi, India	Not Held			
GEO Middle East Geosciences Conference and Exhibition	Not Held	4–7 March Bahrain	Not Held		
Geological Assoc. of Canada/ Mineralogical Assoc. of Canada Annual Meeting	25–27 May Ottawa, ON, Canada	27–29 May St. John's, NL, Canada	22–24 May Winnipeg, MB, Canada		
Geological Society of America (GSA)	9–12 October Minneapolis, MN	4–7 November Charlotte, NC	27–30 October Denver, CO		
IPTC – International Petroleum Technology Conference (AAPG/EAGE/SEG/SPE)	15–17 November Bangkok, Thailand	5–7 December Beijing, China	2–4 December Doha, Qatar	TBD Kuala Lumpur, Malaysia	
National Association of Black Geologists & Geophysicist (NABGG)	7–10 September San Francisco, CA				
NAPE – North American Prospect Expo (AAPL) – Winter	16–18 February Houston, TX	22–24 February Houston, TX			
NAPE – North American Prospect Expo (AAPL) – Summer	17–19 August Houston, TX				
OTC – Offshore Technology Conference (SPE)	2–5 May Houston, TX	30 April–3 May Houston, TX	6–9 May Houston, TX	5–8 May Houston, TX	
PETEX (PESGB)	Not Held				
Society of Exploration Geophysicists (SEG)	18–23 September San Antonio, TX	4–9 November Las Vegas, NV	22–27 September Houston, TX	26–31 October Denver, CO	
Society of Independent Earth Scientists (SIPES)	20–23 June Jackson Hole, WY				
Society of Petroleum Engineers (SPE)	30 Oct–2 Nov Denver, CO	8–10 October San Antonio, TX	30 Sept–2 Oct New Orleans, LA		
Society of Professional Well Log Analysts (SPWLA)	14–18 May Colorado Springs, CO				

Shaded boxes indicate that all aspects of meeting are managed by the American Association of Petroleum Geologists
Global Development and Conventions Department
P.O. Box 979, Tulsa, Oklahoma 74101-0979 USA +1 918 560 2679
Updated 14 July 2011 / Dates are subject to change

GEO LINK POST

USGS TAPESTRY OF TIME AND TERRAIN <http://tapestry.usgs.gov> The CCGS is donating to all of the 5th and 6th grade schools in the Coastal Bend. Check it out—it is a spectacular map. You might want a framed one for your own office. The one in my office has glass and a metal frame, and it cost \$400 and it does not look as good as the ones we are giving to the schools. Call Owen 510-6224 if you want one for your office for \$150. Duncan, Mike, Chris, Dave, Bob Randy, Seb., Kevin, Ken, Craig, Patrick, Robert.

FREE TEXAS TOPO'S <http://www.tnris.state.tx.us/digital.htm> these are TIFF files from your state government that can be downloaded and printed. You can add them to SMT by converting them first in Globalmapper. Other digital data as well.

FREE NATIONAL TOPO'S [http://store.usgs.gov/b2c_usgs/b2c/start/\(xcm=r3standardpitrex_prd\)/.do](http://store.usgs.gov/b2c_usgs/b2c/start/(xcm=r3standardpitrex_prd)/.do) go to this webpage and look on the extreme right side to the box titled TOPO MAPS DOWNLOAD TOPO MAPS FREE.

<http://www.geographynetwork.com/> Go here and try their top 5 map services. My favorite is 'USGS Elevation Date.' Zoom in on your favorite places and see great shaded relief images. One of my favorites is the Great Sand Dunes National Park in south central Colorado. Nice Dunes.

<http://antwrp.gsfc.nasa.gov/apod/astropix.html> Astronomy picture of the day — awesome. I click this page everyday.

<http://www.spacimaging.com/gallery/ioweek/iow.htm> Amazing satellite images. Check out the gallery.

<http://www.ngdc.noaa.gov/seg/topo/globegal.shtml> More great maps to share with kids and students.

www.geo.org Don't forget we have our own web page.

<http://micro.magneet.fsu.edu/primer/java/scienceoptiscu/owersof10/>

<http://asterweb.jpl.nasa.gov/galery/default.htm> Great satellite images of volcanoes

<http://terra.nasa.gov/gallery/> More here

www.ermapper.com They have a great free downloadable viewer for TIFF and other graphic files called ER Viewer.

www.drillinginfo.com This is an incredible (subscription) well and completion data service for independents. Can be demo'ed for free.

<http://terrasrver.com/> Go here to download free aerial photo images that can be plotted under your digital land and well data. Images down to 1 meter resolution, searchable by Lat Long coordinate. Useful for resolving well location questions.

<http://www.fs.fed.us/gpnf/volcanocams/msh/> This is a live cam of Mt. St. Helens refreshed every 5 minutes. At the bottom are old videos of past eruptions in this cycle. It is worth a watch especially now.

CANCELLED

Gulf Coast Association of Geological Societies



61st GCAGS Annual Convention

October 16 - 19, 2011

Veracruz, Mexico

GULF COAST ASSOCIATION OF GEOLOGICAL SOCIETIES GOM GEOLOGY GOES BEYOND BORDERS!

An ancient Aztec icon, **OLLIN**, inspired the 61st GCAGS Annual Convention. Ollin represents transformation and creative evolution and also symbolizes the idea AMGP's geologists have about this Convention expressed by its theme: **"Sharing knowledge to add value"**. The convention features a first-class technical program in the relaxed ambiance of the port city of Veracruz.

For the very first time you will have a chance to attend a meeting offering an integrated technical program with an unabridged regional vision of the geology of the Gulf of Mexico.

- 155 technical presentations featuring Deepwater Setting, Geology, and Economics: 95 from southern and western GOM, 53 from northern GOM, and 7 from Cuba.
- Symposium: "Jurassic Regional Framework and Reservoirs in the Gulf of Mexico".
- A luncheon conference.
- 6 short courses including *Fractured reservoirs with examples from southern Mexico and Petroleum provinces of Mexico*.
- 3 field trips to classic localities of eastern and southeastern Mexico: *Chicontepec, Sierra Madre Oriental, and Sierra de Chiapas*.
- Exhibition including networking events.

Student activities and spouse/guest programs are an integral part of the Convention.

DON'T MISS THIS LANDMARK CONVENTION!

For more information visit:

www.gcags2011.com

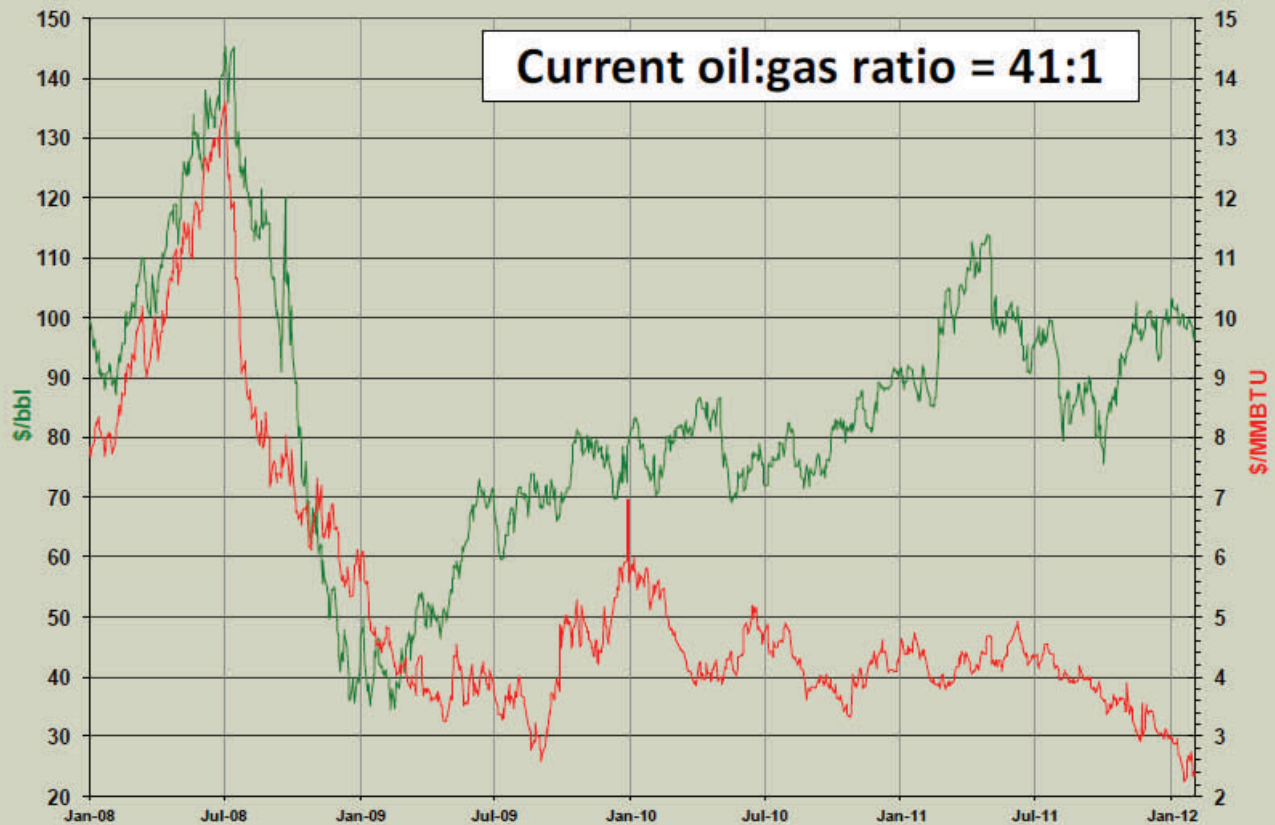
We look forward to seeing you all in Veracruz!



Hosted by the
Asociación Mexicana
de Geólogos Petroleros



NYMEX DAILY SPOT



Current Oil & Gas Prices	OIL	GAS	OIL-12-Mo Strip	GAS-12-Mo Strip
NYMEX Close Friday 2/3/12	\$ 97.84	\$ 2.41	\$ 99.62	\$ 3.31
ICE* current(2/6 @ 7:29 AM)	\$ 96.86	\$ 2.47	<i>*Intercontinental Commodities Exchange</i>	

SOURCE: Oil & Gas Asset Clearinghouse

TURN IT TO THE RIGHT!



Do you have any articles that you want to share with the MGS membership?

Something you read online or something you wrote.

Please email them to the MGS Editor at mgs@treetop.us.com.

We would like to add more content from the membership.

Attention MGS Members:

June 2012 will be the last month the MGS Bulletin will be printed and mailed out. From that point on the only version will be in digital .PDF file format.



MGS BOLAND SCHOLARSHIP FUND

The Society's L. F. Boland Scholarship Fund is open to donations (tax deductible) year round. Your contribution will help the Society recognize and reward outstanding earth science students at its annual Honors Day meeting on April 7th, 2011.

Since inception in 1980, the Society has honored 104 students with the Boland Award. If you would like to contribute, please contact Dave Cate at 601-718-9397 or mail your check (L. F. Boland Scholarship Fund) to him at 217 W. Capitol St., Jackson, MS 39201.

The MGS gratefully acknowledges the following contributors to the L. F. Boland Scholarship Fund for the 2011-2012 year.

Maurice Birdwell	Kieth Gourges	Jack Douglas
Maurice Meylan	Philip Reeves	Tony Stuart
Julius Ridgway	Dave Cate	I. Meade Hufford
Chris Franks	Joe Mcduff	
Donnie Lambert	Stewart & Jane	Terry Bryant
Ken McCarley	Welch	
Vaughan Watkins	Jim Michael	

MGS Honorary Members

Esther Applin*	Paul Applin*	Lawrence F. Boland*
Verne Culbertson *	H. Leroy Francis*	Jim Furrh*
David C. Harrell*	Oleta R. Harrell*	Ralph Hines
Dudley J. Hughes	Urban B. Hughes*	Wendell B. Johnson *
Walter P. Jones*	Harold Karges*	Wilbur H. Knight*
Winnie McGlammery*	Thomas McGlothin*	Frederic F. Mellen*
Maurice E. Miesse*	Emil Monsour*	William H. Moore*
Marvin E. Norman*	Marvin L. Oxley*	Richard R. Priddy*
Thurston Connell Rader*	Baxter Smith*	Harry V. Spooner
Henry Toler*	H. Vaughn Watkins	Stewart W. Welch
Charles H. Williams	Jerry Zoble	Julius Ridgeway

* deceased

MEMBERSHIP APPLICATION / RENEWAL FORM

MISSISSIPPI GEOLOGICAL SOCIETY

P.O. BOX 422, JACKSON, MISSISSIPPI 39205-0422

2011-2012

Membership year is June through May

New Membership (\$20/yr)_____ Renewal (\$20/yr)_____ Student (FREE)_____ Associate (\$20/yr)_____

Boland Scholarship Fund Donation \$_____ Total Amount Enclosed \$_____

Last Name:_____ First:_____ MI:_____

Mailing Address:_____

Office Phone:_____ Home Phone:_____ FAX:_____

E-mail Address: _____

College/University Attended: _____

Degree(s) Obtained and Year(s) Awarded: _____

Professional Associations, Certifications, & Licenses: _____

The following are MGS members in good standing

Ken Adams	Karl Kaufmann	James Starnes
Les Altman	Barbara Kearney	Jim Stevens
Bill Bagnall (O)	Stanley King (O)	Edwin Stricker
Larry Baria	Donnie Lambert	Tony Stuart
Neil Barnes (O)	James Landrem	John Sullivan
Maurice Birdwell	S. Cody Lenert	Andy Sylte
Randy Bissell	James Libiez	Tom Sylte
Michael Bograd	Michael Lieser	Michael Taylor
Chris Bowen	Joe Lott	Stan Thieling
Terry Bryant	Ken Magee	David Thompson
Alvin Byrd	Ken McCarley	Sid Thompson
Kyle Carlton	Joe McDuff	Colby Thrash
Dave Cate	Phillip Meadows	Wayne Upchurch
Matt Caton (O)	Maurice Meylan	Watts Ueltschey
Charles Coney	James Michael	Steve Walker
Steve Craft	David Miller	Steve Walkinshaw
Paul Day	Dean Miller	Fred Walsh
Charles Doubek	Lew Murray	Johnnie Wanger
Jak Douglas	Jack Moody	Mark Wyatt
Dave Easom	Pat Moore	Rob Weyman
Jim Files (O)	Charlie Morrison	Joe White
J. Michael Fincher	James Nix	Bradley Winton
Chris Franks	James Norris	Stephen Richard Yancey
Stan Galicki	Frank Perkins	
Bob Gaston	Thang Pham	
Erin Gilmore	Jeanne Phelps	
Max Gilpin	Robert Phillips	
Keith Gourgues	William Potthoff	
Carl Grey	Billy Powell	
Paul Gribas	Mike Rasmussen	
Tom Giosa	Philip Reeves	
Jeffrey Hall	Armondo Ricci	
David Hancock	Bill Ridgway	
Danny Harrelson	Gail Russell	
Andrew Head	Winston Russell	
James Harris	Robert Schneeflock	
Franklin Heitmuller	Mark Scott	
Dan Herlihy	Thomas Bing Seitz	
Robert Herr	George Self, Jr.	
David Hilton	C. David Senior	
Todd Hines	Brendan Sidereas	
Johnny Holifield	Drew Sills	
I Meade Hufford	John Silvernail	
Lisa Ivshin	Kevin Skees	
Kevin Jefferys	Gary Slade	
Dustin Johnson	Charles Smith	
Lars Johnson	George T. Smith	
James (Jim) Johnson	Jim Sparks	
Joe Johnson (O)	Michal Spooner	
Fred Katzenmeyer		

(O) - officer

(H) - Honorary

MGS ADVERTISING ORDER FORM

September 2010 – May 2011

I. Bulletin Advertisements:

<u>Size</u>	<u>Rate/Year</u>	<u>Amt. Remitted</u>
Full Page Ad (6" x 8")	\$500	\$ _____
1/2 Page Ad (6" x 4")	\$300	\$ _____
1/4 Page Ad (3" x 4")	\$200	\$ _____
Business Card Ad (1 1/2" x 3")	\$100	\$ _____
Professional Listing (1/2" x 3")	\$ 50	\$ _____

II. Web Page Advertisements (www.missgeo.com):

<u>Type of Web Page Ad</u>	<u>Rate/Year</u>	<u>Amt. Remitted</u>
Front Page Sponsor (Banner Ad – limit of 5)	\$500	\$ _____
Second Page Banner Ad	\$250	\$ _____
Professional Listing/Link	\$100	\$ _____

(Note: Please contact Steve Walkinshaw at (601) 607-3227 or mail@visionexploration.com for details concerning placing your ad on the MGS web site.)

Total Remitted \$ _____

Please make checks payable to the Mississippi Geological Society. If you have any questions, contact Matt Caton at (601) 898-7444 or mcaton@tellusoperating.com

SEI®

SEISMIC EXCHANGE, INC.

201 St. Charles Ave., Suite 4300
New Orleans, LA 70170-4300
(504) 581-7153 • Fax (504) 581-9591

HOWARD PATTON

PRUET OIL COMPANY, LLC

OIL & GAS EXPLORATION

217 WEST CAPITOL STREET
JACKSON, MS 39201

OFFICE: (601) 948-5279 Fax: (601) 944-1281

W. LESTER AULTMAN

125 South Congress St., Suite 1212, Jackson, MS 39201
Office (601) 353-2738 Res. (601) 924-4830

VANTAGE OIL COMPANY

1710 Tank Road (601) 878-0593
Terry, MS 39170



BEAN RESOURCES, INC.

THOMAS A. GIOSA
Geologist

P. O. Box 52768 (70505)
1000 E. St. Mary Blvd.
Lafayette, La. 70503

Off. (337) 234-2326
Fax (337) 234-2330
Cell (337) 288-4089

BRUNINI

WATTS C. UELTSCHY

OFFICE (601) 960-6871 | FAX (601) 960-6902

E-MAIL: WATTS@BRUNINI.COM | WWW.BRUNINI.COM

BRUNINI, GRANTHAM, GROWER & HEWES, PLLC
ATTORNEYS AT LAW

190 EAST CAPITOL STREET SUITE 100 JACKSON, MS 39201
MAILING ADDRESS: P.O. DRAWER 119 JACKSON, MS 39205



Day Dreams Resources, LLC

Jerry P. Ogden

OIL AND GAS EXPLORATION AND PRODUCTION
CONSULTING PETROLEUM ENGINEER

Jerry P. Ogden, Pet. Eng.
P. O. Box 101
Natchez, MS 39121
email: ogdenjerry@bellsouth.net

Office (601) 446-8105
Fax (601) 446-8844
Cell (601) 807-1000



EXPLORATION, L.L.C.

401 Edwards Street, Suite 1200
Shreveport, LA 71101

P.O. Box 1367
Shreveport, LA 71164

office: (318) 222-8406
fax: (318) 222-6061
email: mei@marlinexploration.com

Jon Q=Petersen
President

S. Cody Lenert
Geologist

Autie T. Orjias
V.P./Land Manager

Ryan Q=Petersen
Land

Dean Giles
Secretary/Treasurer

Rhonda White
Admin. Assistant

Joe R. White, Jr.
Chief Geologist



Jason Stockstill
Marketing Representative

DAWSON GEOPHYSICAL COMPANY

508 West Wall, Suite 800
Midland, Texas 79701-5010
Telephone 432/684-3000
Fax 432/684-3030
Cell 432/967-4099

e-mail: stockstill@dawson3d.com



ENERGY DRILLING COMPANY [®]

CONTRACT DRILLING 3000 – 15,000 FEET
MS-AL-FL-ARK-LA-TEX

Pat Burns, Jr.

Jody Helbling

Nestor Navarro

601-446-5259

(Fax)601-446-8607

P. O. Box 905

413 Liberty Rd.

Natchez, MS 39121



OPERATING GROUP, LLC

OPERATING GROUP, LLC

602 Crescent Place, Suite 100

Ridgeland, MS 39157

601-898-7444 Voice

601-898-7446 Fax

BRIAN SIMS

EXPLOITATION GEOLOGIC MANAGER

Email: bsims@tellusoperating.com

OWLCO

Oil Well Logging Company
P. O. Box 1692
Madison, MS 39130
(601) 477-8315



MOCO INC.
The Mississippi Oil Company

MICHAEL L. BLACKWELL
H. DON NOBLITT

603 Northpark Drive • Ridgeland, MS 39157
(601) 957-3550



Karl J. Kaufmann
President

Suite B
546 Keyway Drive
Jackson, MS 39232

601-936-3601
Fax 601-936-3646
coukauf@aol.com

BLAIR & BONDURANT, P.A.
ATTORNEYS AT LAW

WILLIAM F. BLAIR

P.O. Box 321423 1368 Old Fannin Road
Jackson, MS 39232 Suite 300
Telephone: (601) 992-4477 Brandon, MS 39047
Telecopier: (601) 992-9189 Email:



**TROPHY
PETROLEUM
CORPORATION**

100 N. Van Buren Street
Post Office Box 415
Carthage, MS 39051
(601) 298-0200 (601) 298-0201 Fax

E. Wayne Upchurch
President

**ARK-LA-TEX
LOG LIBRARY, INC.**

400 TRAVIS - SUITE 500
SHREVEPORT, LOUISIANA 71101-3113

Marie Pace
MANAGER

PHONE (318) 227-1641
FAX (318) 227-1642

BRUXOIL, INC.

DAVID K. BROOKS - PRESIDENT
RAYMOND A. HELFRICH - VICE PRESIDENT
DOROTHY M. JAUBERT

P. O. Box 16929
Jackson, MS 39236
(601) 981-5722
FAX: (601) 366-9490



COX John G. Cox
Petroleum Geologist

John G. Cox
Geologist

603 Northpark Drive, Suite 300
Ridgeland, Mississippi 39157

601.978.1763
fax 601.952.0425
john_cox@bellsouth.net

MOON & HINES
OIL & GAS EXPLORATION

MOON-HINES-TIGRETT OPERATING CO., INC.
PROPERTY MANAGEMENT

P O BOX 3216
RIDGELAND, MS 39158

OFFICE (601) 572-8300 FAX (601) 572-8310



ROUNDTREE & ASSOCIATES, INC.
OIL AND GAS PRODUCTION
210 Trace Colony Park Drive,
Ridgeland, MS 39157
Phone (601) 355-4530

Boone Exploration, Inc.

Lynn D. Boone
President

J.C. Carlisle
Vice President

21 Wire Road
P.O. Box 8660
Huntsville, TX 77340

Phone: 936-295-4066
Fax: 936-295-4042
Email: jcc9551@aol.com



KELTON OPERATING COMPANY, INC.
since 1953

605 SUN TRUST TOWER
220 W. GARDEN STREET
PENSACOLA, FL 32501
P.O. BOX 230
PENSACOLA, FL 32591

TELEPHONE
(850) 434-6830
FACSIMILE
(850) 434-6842

I. Meade Hufford, CPL
Owner-President

Energy Land Services

Oil & Gas Exploration

99 N. Post Oak Lane
Suite 6101
Houston, TX 77024
Phone: 713-888-0012
Cell: 713-705-7235
E-mail: hufford1913@aol.com
VA Phone: 804-438-5852

JULIUS M. RIDGWAY

COASTAL EXPLORATION, INC.

1437 OLD SQUARE ROAD, #104
JACKSON, MISSISSIPPI 39211

601-362-0502
FAX: 601-362-5397

SPOONER PETROLEUM COMPANY

210 East Capitol St., Suite 956
Jackson, Mississippi 39201

**Oil & Gas Production & Exploration
Contract Operations**

601-969-1831

JAMES B. FURRH, Jr., Inc.

Oil & Gas Exploration

4450 Old Canton Road, Suite 205,
Jackson, MS 39211
Phone (601) 982-9393 Fax (601) 982-9785

E. GEOFFREY JEFFREYS

Petroleum Consultant

OIL, GAS AND MINERAL APPRAISALS

115 Fairway Drive
Daphne, AL 36526
egjeffreys@aol.com

Off (251) 621-1850
Fx (251) 621-1630
Cell (251) 709-7919

Bryant Miller

1837 Peachtree Street
Jackson, MS 39202

bryantgmiller@bryantgmiller.com

ENERGEN
RESOURCES

President & COO

John Richardson

Senior Vice President

Operations

Paul Sparks

General Manager

Acquisitions & Engineering

Gene Cash

General Manager

Geology

Ron Tisdale

General Manager

Land

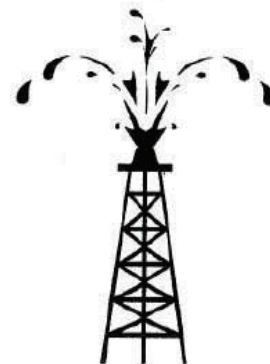
Paul Rote

(205)326-2721

Joseph H. McDuff
Geologist

351 Chapel Loop
Mandeville, LA 70471
985.845.9430

jhmcduff@charter.net



**Diversified Land
Management, Inc.**

**PERMIT ACQUISITION
SPECIALISTS**

Jack Tate

President

Office: 337.886.0060

Fax: 337.886.0064

Cell: 601.259.1366

email: geoagent46@aol.com

dminconline.com

"A company committed to excellence and achieving success while providing professional permitting acq. & project mngt. with the client's interests & concerns top priority"

Get More



from your Core

With reservoirs becoming increasingly complex, you need the most accurate information you can get to better understand your reservoir.

Weatherford Labs helps you get more from your core by combining an unsurpassed global team of geoscientists, engineers, technicians and researchers with the industry's most comprehensive, integrated laboratory services worldwide. From core analysis, sorption, geochemistry and isotopic composition to detailed basin modeling and comprehensive data packages, we provide you with real reservoir rock and fluid information that hasn't been distilled by a simulator or iterated by software.

We call it "The Ground Truth™" – giving you the accurate answers you need for better reservoir understanding. You'll call it a better return on your reservoir investment. To learn more, contact TheGroundTruth@weatherfordlabs.com.



Weatherford
LABORATORIES
weatherfordlabs.com

© 2011 Weatherford. All rights reserved. Trade names proprietary and patented Weatherford technology.

Denbury

5320 Legacy Drive
Plano, TX 75024

Denbury Resources, Inc.

Denbury Resources, Inc. is a growing independent oil and gas company. The Company is the largest oil and natural gas operator in Mississippi and Montana, owns the largest reserves of CO₂ used for tertiary oil recovery east of the Mississippi River, and holds significant operating acreage in the Rockies, Permian Basin, Mid-Continent and Gulf Coast. The Company's goal is to increase the value of acquired properties through a combination of exploration, drilling and proven engineering extraction practices, with its most significant emphasis relating to tertiary recovery operations.

NYSE: DNR
www.denbury.com

Denbury Resources Inc.

**BRANCHING
OUT**

MISSISSIPPI GEOLOGICAL SOCIETY

PAST PRESIDENTS

1939-1940	Henry N. Toler	1973-1974	Larry Walter
1940-1941	Urban B. Hughes	1974-1975	W. E. "Gene" Taylor
1941-1942	J. Tom McGlothlin	1975-1976	Jerry E. Zoble
1942-1943	Dave C. Harrell	1976-1977	P. David Cate
1943-1944	K. K. "Bob" Spooner	1977-1978	Sarah Childress
1944-1945	L. R. McFarland	1978-1979	Les Aultman
1945-1946	J. B. Story	1979-1980	Philip R. Reeves
1946-1947	Frederic F. Mellen	1980-1981	Marshall Kern
1947-1948	H. Lee Spyrès	1981-1982	Stephen Oivanki
	Robert D. Sprague	1982- 1983	James W. "Buddy" Twiner
1948-1949	Robert D. Sprague	1983- 1984	Charles H. Williams
1949-1950	E. T. ""Mike" Monsour	1984- 1985	C. Kip Ferns
1950-1951	J. Tate Clark	1985-1986	Steven S. Walkinshaw
	Charles E. Buck	1986-1987	J. R. ""Bob" White
1951-1952	George W. Field	1987-1988	Harry Spooner
1952-1953	James L. Md11in, Jr.	1988-1989	Stanley King
1953-1954	Wilbur H. Knight	1989-1990	Stan Galicki
1954-1955	A. Ed Blanton	1990-1991	E. James Files, Jr.
1955-1956	Gilbert A. Talley	1991-1992	Stephen L. Ingram, Sr.
1956-1957	Ben Ploch	1992-1993	Michael Noone/Stanley King
1957-1958	Emil Monsour	1993-1994	Brian Sims
1958-1959	Charles Brown	1994-1995	C. W. "Neil" Barnes
1959-1960	M. F. Kirby	1995-1996	Lester Aultman
1960-1961	Rudy Ewing	1996-1997	Jack S. Moody
1961-1962	Xavier M. Franscogna	1997-1998	George B. Vockroth
1962-1963	Robert B. Ross	1998-1999	Rick L. Ericksen
1963-1964	William A. Skees	1999-2000	Stanley King
	Marvin Oxley	2000-2001	John C. Marble
1964-1965	James F. Bollman	2001-2002	Andrew T. Sylte
1965-1966	Sankey L. Blanton	2002-2003	Aaron Lasker
1966-1967	Alan Jackson	2003-2004	John G. Cox
1967-1968	Julius M. Ridgway	2004-2005	James E. Starnes
1968-1969	Edward D. Minihan	2005-2006	Todd Hines
1969-1970	Kevin E. Cahill	2006-2007	Bob Schneeflock
1970-1971	John Lancaster	2007-2008	Tony Stuart
1971-1972	Larry Boland	2008-2009	Lisa Ivshin
1972-1973	Charles Barton	2009-2010	Joe Johnson
		2010-2011	Brian Sims